

Anson Commences Re-entry Program at Mt Fuel-Skyline Geyser Well to Increase JORC Resource

ASX: [ASN](#) Announcement

Highlights:

- Large drilling rig mobilised to commence re-entry program at Mt Fuel-Skyline Geyser Well,
- Designed to increase the JORC resource by converting the large Exploration Target into Indicated and Inferred Resources,
- Brine sampling planned for both the Paradox Formation & Leadville, Mississippian Units,
- Expected depth for sampling expected to reach 9,800 feet,
- Historical assay results confirms it has a similar geochemistry to that of the Bosydaba #1 well.

Anson Resources Limited (ASX: [ASN](#)) (“Anson Resources” or the “Company”) through its 100% owned subsidiary Blackstone Minerals NV LLC is pleased announce that it has commenced its re-entry drilling program of the Mt Fuel-Skyline Geyser 1-25 well, see Figure 1, at its Green River Lithium Project (Project) in south-eastern Utah, USA. The aim of the program is to confirm lithium rich brines are located in the target horizons, which will be used to increase the overall Project JORC Mineral Resources in addition to the Resources announced at the Bosydaba #1 well 12km to the north (ASX announcement 123 June 2025), see Figure 2.



Figure 1: The drill rig set up on the Mt Fuel-Skyline Geyser 1-25 well pad.

It is expected that due to the well being only partially cased, sampling of Clastic 31 within the Paradox Formation, where supersaturated brine has previously been located at the Paradox Lithium Project, see ASX Announcement February 27 2019 and March 26 2019, it will be possible to sample the horizon on the way down to the Mississippian Units in the Leadville Formation. The re-entry program is aiming to deepen the well to 9,800 feet to enable samples to be taken from the multiple aquifers that have been identified by the Petrel model, see ASX Announcement June 19 2025. The objective of sampling the Clastic 31 and deepening the well is to further contribute to the estimation of the Indicated and Inferred JORC resource estimates.

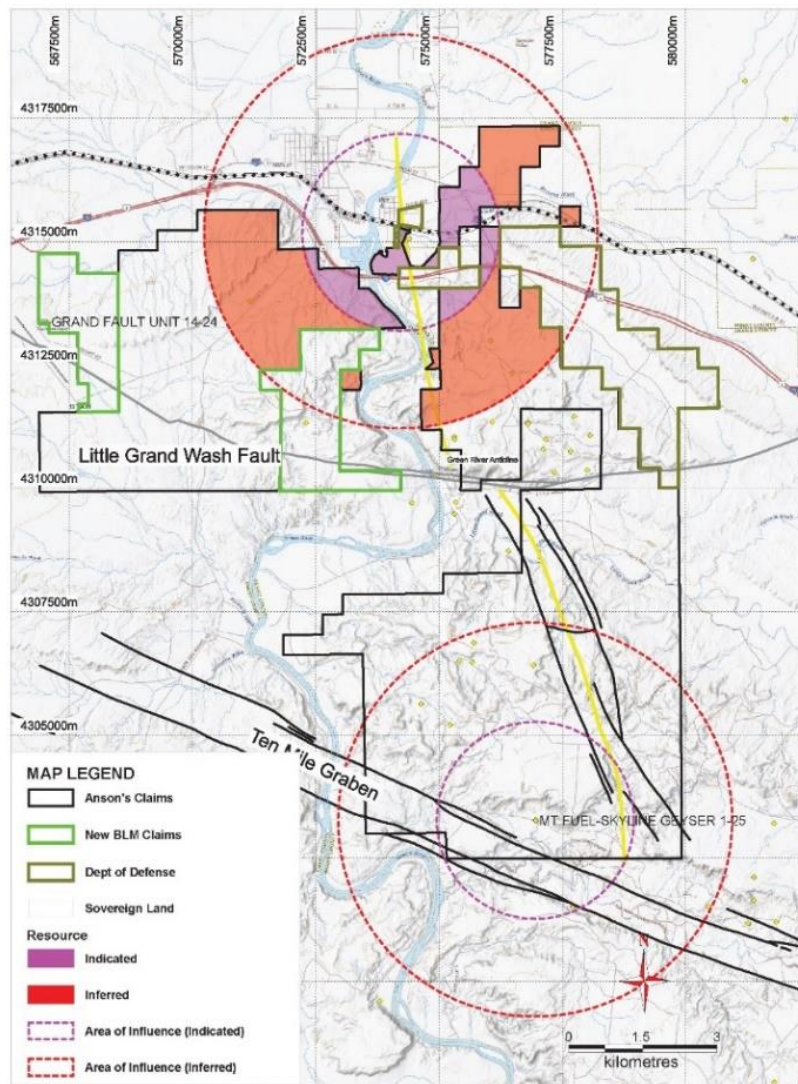


Figure 2: Plan showing the location of the Mt Fuel-Skyline Geyser in relation to the Bosphada well.

While the Green River area had no recorded historical lithium assays until Anson's recent drilling program, supersaturated brine had been intercepted during oil and gas drilling, see ASX Announcement 15 May 2025. The results from the Bosphada #1 well (Boysdaba) confirmed there was lithium rich brines at the north end of the Paradox Basin, see ASX Announcements 22 February 2024 and 22 April 2024.

Brine was identified and logged in the drilling program at the Mt Fuel well but the only brine sample collected from the Mississippian Unit was only assayed for salts and not lithium. The well's proximity is less than 12 km from the Boysdaba #1 well and is known to have similar geological formations, being within the northern Paradox Basin.

The targeted zones at Mt Fuel have recorded supersaturated brines had been intercepted during historical oil and gas drilling, see Table 1*. The one assayed sample showed salt concentrations from the Mississippian units** like that of the recently drilled Bosydaba #1 well completed by Anson. Based upon the similarity of the other mineral assay results it is expected that the Mt Fuel lithium content will also be similar.

Mineral	Bosydaba#1 SGS (North America)	Mt Fuel-Skyline Geyser 1-25 (Chemical Geological Laboratories)
Lithium	138	Not Assayed
Magnesium	1,359	1,196
Potassium	2,574	2,700
Calcium	10,040	9,555
Sodium	56,650	64,376
Chloride	120,081	121,000

Table 1: Assay comparison between the new Bosydaba #1 well and the historical Mt Fuel-Skyline 1-25 well

The exploration program plans to deepen the well and target the highly porous horizons which have resulted due to the geological structures in the region. These structures include the Ten Mile Graben (a dropped-down block of rock bordered by two parallel fault lines) that passes east-west through the Green River Lithium Project, see Figure 2. The Graben may act as a “trap” for the brine that is understood to flow from the northeast to the southwest, concentrating the lithium and other mineral salts, *see ASX Announcement 7 August 2023 and 21 September 2023*.

The historical Mt Fuel-Skyline Geyser well file noted **“The Mississippian rocks consisted of crystalline dolomite with excellent porosity and permeability. Unfortunately, they were void of any shows (oil) and yielded a large volume of salt water on a test” ****, *see ASX Announcement 29 April 2025*. This test work also recorded the pressures in the Mississippian horizon of between 4,800 and 5,100psi. The geological logging of the well described the dolomite and limestone as being vuggy, sucrosic and chalky through the Mississippian horizon which results in the increased porosity and possibly brine volume.

Drill Stem Tests (DST) data from historic wells within the Project region, indicate that the Mississippian strata has a high permeability across a large area. This permeability indicates that flow rates required to support a planned lithium plant may be achieved, as well as indicating that the pressure may remain constant over the life of the lithium project. Seven drill stem tests were conducted at the Mt Fuel well which will assist in the determining the specific porosity of the host rock in the area of interest and determine flow rates that are needed for production calculations**.

*Drilling finished in the Leadville Limestone unit.

**Wing, G., 1973, Geology Report Mountain Fuel Supply Company Skyline Geyser # 1-25. Tooke Engineering Company.

The fractured rock of these units forms an excellent reservoir for supersaturated brines. Due to the presence of the above attributes, when brine is removed at an extraction point it may flow into the voids from where it was removed. This would assist in maintaining high reservoir pressure and help deliver a high ultimate recovery of brine.

Geological Time & Connectivity

It should also be noted that these layers in the Mississippian Units have been recorded by geological studies to be “ductile” (plastic and can flow) sealing cracks or fissures that may occur over “Geological Time”. The USGS and UGS research concludes that these crack and fissures are immediately filled due to the ductile characteristic of the salts separating the zones*.

The brine in these layers is perpetually separated and will not interact with each other. The impermeable salts of the Pennsylvanian and Mississippian units were deposited over 300 million years ago and to date there is no connectivity between the surface water layers, demonstrating these ductile characteristics. It is expected in future Geological Time the ductile salts will continue to seal the aquifers from interconnectivity.

Further it has been determined that the shallower formations contain some evaporite layers which are impermeable to the flow of water and brine creating numerous seals which extend over Geological Time.

This announcement has been authorized for release by the Executive Chairman and CEO.

ENDS

For further information please contact:

Bruce Richardson
Executive Chairman and CEO
E: Info@AnsonResources.com
Ph: +61 7 3132 7990
www.AnonResources.com

Will Maze
Head of Investor Relations
E: Investors@AnsonResources.com
Ph: +61 7 3132 7990

Follow us on Twitter @Anson_ir

Subscribe to Anson Resources News: [Click Here](#)

About Anson Resources Ltd

Anson Resources (ASX: ASN) is an ASX-listed mineral resources company with a portfolio of minerals projects in key demand-driven commodities. Its core assets are the Green River and Paradox Lithium Project in Utah, in the USA. Anson is focused on developing these assets into a significant lithium producing operations. The Company’s goal is to create long-term shareholder value through the discovery, acquisition and development of natural resources that meet the demand of tomorrow’s new energy and technology markets.

Forward Looking Statements: Statements regarding plans with respect to Anson's mineral projects are forward-looking statements. There can be no assurance that Anson's plans for development of its projects will proceed as expected and there can be no assurance that Anson will be able to confirm the presence of mineral deposits, that mineralization may prove to be economic or that a project will be developed.

Competent Person's Statement 1: The information in this announcement that relates to exploration results and geology is based on information compiled and/or reviewed by Mr Greg Knox, a member in good standing of the Australasian Institute of Mining and Metallurgy. Mr Knox is a geologist who has sufficient experience which is relevant to the style of mineralization under consideration and to the activity being undertaken to qualify as a "Competent Person", as defined in the 2012 Edition of the Australasian Code for Reporting of Exploration Results, Mineral Resources and Ore Reserves and consents to the inclusion in this report of the matters based on information in the form and context in which they appear. Mr Knox is a director of Anson.

JORC Compliance Statement: Where statement in this announcement refer to exploration results which previously been reported, the Company confirms that it is not aware of any new information or data that materially affects the information included in the original announcements, and in the case of estimates of Mineral Resources, that all material assumptions and technical parameters underpinning the estimates in the relevant market announcements continue to apply and have not materially changed. The Company confirms that the form and context in which the Competent Person's findings are presented have not materially modified from the original market announcements.

JORC Code 2012 “Table 1” Report

Section 1 Sampling Techniques and Data

(Criteria in this section apply to all succeeding sections.)

Criteria	JORC Code Explanation	Commentary
Sampling techniques	<ul style="list-style-type: none"> Nature and quality of sampling (e.g. cut channels, random chips, or specific specialized industry standard measurement tools appropriate to the minerals under investigation, such as down hole gamma sondes, or handheld XRF instruments, etc.). These examples should not be taken as limiting the broad meaning of sampling. Include reference to measures taken to ensure sample representivity and the appropriate calibration of any measurement tools or systems used. Aspects of the determination of mineralization that are Material to the Public Report. In cases where 'industry standard' work has been done this would be relatively simple (e.g. 'reverse circulation drilling was used to obtain 1 m samples from which 3 kg was pulverized to produce a 30 g charge for fire assay'). In other cases, more explanation may be required, such as where there is coarse gold that has inherent sampling problems. Unusual commodities or mineralization types (e.g. submarine nodules) may warrant disclosure of detailed information. 	<ul style="list-style-type: none"> Sampling will follow the protocols produced by SRK for lithium brine sampling Samples will be collected in IBC containers and samples taken from them. Samples will be collected and will be sent for assay, and duplicate samples kept. Storage samples will also be collected and securely stored. Bulk samples will also be collected for future use. Sample sizes will be appropriate for the program being completed. The Mt Fuel-Skyline Geysir 1-25 historical well intersected muds and brines while drilling an oil exploration well but not sampled for lithium, see link https://oilgas.ogm.utah.gov/oilgasweb/live-data-search/lids-files/files-lu.xhtml Wing, G., 1973, Geology Report Mountain Fuel Supply Company Skyline Geysir # 1-25. Tooke Engineering Company.
Drilling Techniques	<ul style="list-style-type: none"> Drill type (e.g. core, reverse circulation, open-hole hammer, rotary air blast, auger, Bangka, sonic, etc.) and details (e.g. core diameter, triple or standard tube, depth of diamond tails, face sampling bit or other type, whether core is oriented and if so, by what method, etc.). 	<ul style="list-style-type: none"> The Mt Fuel-Skyline Geysir 1-25 well was drilled in 1973, drilled using mud rotary.
Drill Sample Recovery	<ul style="list-style-type: none"> Method of recording and assessing core and chip sample recoveries and results assessed. Measures taken to maximise sample recovery and ensure representative nature of the samples. Whether a relationship exists between sample recovery and grade and whether sample bias may have occurred due to preferential loss/gain of fine/coarse material. 	<ul style="list-style-type: none"> Brine will be collected over the target horizons for geochemical analysis when the re-entry is carried out. Samples will be collected in IBC containers and smaller 250ml samples taken from them. Samples will be collected and will be sent for assay, and duplicate samples kept. Bulk storage samples will also be collected and securely stored No brine samples were collected to assay for lithium when the oil wells were initially drilled
Logging	<ul style="list-style-type: none"> Whether core and chip samples have been geologically and geotechnically logged to a level of detail to support appropriate Mineral Resource estimation, mining studies and metallurgical studies. Whether logging is qualitative or quantitative in nature. Core (or costean, channel, etc.) photography. The total length and percentage of the relevant intersections logged. 	<ul style="list-style-type: none"> No logging will be carried out as it is not a new well, except when deepening at the bottom of the well. The well has been plugged & abandoned, so only cement cuttings will be recovered. The Mt Fuel-Skyline historical well intersected muds and brines but were not assayed as it was an oil exploration well.

Criteria	JORC Code Explanation	Commentary
Sub-sampling Techniques and Preparation	<ul style="list-style-type: none"> • If core, whether cut or sawn and whether quarter, half or all core taken • If non-core, whether riffled, tube sampled, rotary split, etc. and whether sampled wet or dry. • For all sample types, the nature, quality and appropriateness of the sample preparation technique. • Quality control procedures adopted for all sub-sampling stages to maximize representivity of samples. • Measures taken to ensure that the sampling is representative of the in-situ material collected, including for instance results for field duplicate/second-half sampling. • Whether sample sizes are appropriate to the grain size of the material being sampled. 	<ul style="list-style-type: none"> • Samples will be submitted to Laboratories in Texas, USA that are certified and experienced with oilfield brines • Each sample bottle will be taped and marked with the sample number. • The sample sizes (250ml) are considered to be appropriate for the brine being sampled. • Sample preparation techniques represent industry good practice.
Quality of Assay Data and Laboratory Tests	<ul style="list-style-type: none"> • The nature, quality and appropriateness of the assaying and laboratory procedures used and whether the technique is considered partial or total. • For geophysical tools, spectrometers, handheld XRF instruments, etc., the parameters used in determining the analysis including instrument make and model, reading times, calibrations factors applied and their derivation, etc. • Nature of quality control procedures adopted (e.g. standards, blanks, duplicates, external laboratory checks) and whether acceptable levels of accuracy (i.e. lack of bias) and precision have been established. 	<ul style="list-style-type: none"> • Laboratory testing will be carried out using ICP-OES. • SGS is ISO9001 certified and specializes in oil field brines. • Multiple samples will be collected to confirm assay results (duplicates).
Verification of Sampling and Assaying	<ul style="list-style-type: none"> • The verification of significant intersections by either independent or alternative company personnel. • The use of twinned holes. • Documentation of primary data, data entry procedures, data verification, data storage (physical and electronic) protocols. • Discuss any adjustment to assay data. 	<ul style="list-style-type: none"> • Sampling and assaying will be carried out on site before sending to SGS. • Assaying technique to be used is ICP-OES which is suitable for this sample type. • Stable blank samples (RO water) will be regularly tested to evaluate potential sample contamination. • Regular calibration using standard buffers will be continuously carried out.
Location of Data Points	<ul style="list-style-type: none"> • Accuracy and quality of surveys used to locate drill holes (collar and down-hole surveys), trenches, mine workings and other locations used in Mineral Resource estimation. • Specification of the grid system used. • Quality and adequacy of topographic control. 	<ul style="list-style-type: none"> • The grid system used is UTM Zone 12 (NAD83). • Location of Bosydaba drillhole was positioned by a qualified land surveyor. • Drillhole collars, (Dip -90°, Azim 0°) • Bosydaba#1: 4,303,268.5N, 576,941.4E, EL:4125.7' • Mt Fuel-Skyline Geysers 1-25: 4,303,066.8, 577,018.7E
Data Spacing and Distribution	<ul style="list-style-type: none"> • Data spacing for reporting of Exploration Results. • Whether the data spacing and distribution is sufficient to establish the degree of geological and grade continuity appropriate for the Mineral Resource and Ore Reserve estimation procedure(s) and classifications applied. • Whether sample compositing has been applied. 	<ul style="list-style-type: none"> • There has been no compositing of brine samples. • The Mt Fuel-Skyline Geysers historical well intersected muds and brines but were not assayed while drilling the oil exploration well • Geological data from the drilling of wells in the area has not been used for mineral resource estimation to date.

Criteria	JORC Code Explanation	Commentary
Orientation of Data in Relation to Geological Structure	<ul style="list-style-type: none"> Whether the orientation of sampling achieves unbiased sampling of possible structures and the extent to which this is known, considering the deposit type. If the relationship between the drilling orientation and the orientation of key mineralized structures is considered to have introduced a sampling bias, this should be assessed and reported if material. 	<ul style="list-style-type: none"> The Paradox Basin hosts bromine and lithium bearing brines within a sub-horizontal sequence of salts, anhydrite, shale and dolomite. The Mt Fuel-Skyline Geyser well has a vertical dip (-90), perpendicular to the target brine hosting sedimentary rocks.
Sample Security	<ul style="list-style-type: none"> The measures taken to ensure sample security. 	<ul style="list-style-type: none"> Samples will be transported to laboratories on collection at the well.
Audits or Reviews	<ul style="list-style-type: none"> The results of any audits or reviews of sampling techniques and data 	<ul style="list-style-type: none"> No audits or reviews have been conducted at this point in time.

Section 2 Reporting of Exploration Results

(Criteria in this section apply to all succeeding sections.)

Criteria	JORC Code Explanation	Commentary
Mineral Tenement and Land Tenure Status	<ul style="list-style-type: none"> Type, reference name/number, location and ownership including agreements or material issues with third parties such as joint ventures, partnerships, overriding royalties, native title interests, historical sites, wilderness or national park and environmental settings. The security of the tenure held at the time of reporting along with any known impediments to obtaining a license to operate in the area. 	<ul style="list-style-type: none"> The Green River Lithium Project is located in southeastern Utah, USA, consisting of 628 placer claims that encompasses a land position of 5,960.1 hectares (14,724.3 acres). Purchased private property consists of a 59.6-hectare (147.5 acre) land parcel 1 OBA lease 2,750hectares (6,795.4 acres). All claims are held 100% by Anson's U.S. based subsidiary, Blackstone Minerals NV LLC. The claims/leases are in good standing, with payment current to the relevant governmental agencies.
Exploration Done by Other Parties	<ul style="list-style-type: none"> Acknowledgment and appraisal of exploration by other parties. 	<ul style="list-style-type: none"> Historical exploration for brines within the Paradox Basin includes only limited work in the 1960s. No brine resource estimates had been completed in the area, nor has there been any historical economic production of bromine or lithium from these fluids. The historical data generated through oil and gas development in the Paradox Formation and the Leadville Limestone unit has supplied some information on brine chemistry. The Mt Fuel historical well intersected muds and brines but were not assayed while drilling the oil exploration well.
Geology	<ul style="list-style-type: none"> Deposit type, geological setting and style of mineralization. 	<ul style="list-style-type: none"> The geology of the Paradox Formation indicates a restricted marine basin, marked by 29 evaporite sequences. Brines that host bromine and lithium mineralization occur within the saline facies of the Paradox Formation and are generally hosted in the more permeable dolomite sediments. The Leadville Limestone consists of dolomite and limestone which hosts the supersaturated brines.

	Criteria	JORC Code Explanation	Commentary
	Drill Hole Information	<ul style="list-style-type: none"> A summary of all information material to the understanding of the exploration results including a tabulation of the following information for all Material drill holes: <ul style="list-style-type: none"> easting and northing of the drill hole collar elevation or RL (Reduced Level - elevation above sea level in meters) of the drill hole collar dip and azimuth of the hole down hole length and interception depth hole length. If the exclusion of this information is justified on the basis that the information is not Material and this exclusion does not detract from the understanding of the report, the Competent Person should clearly explain why this is the case. 	<ul style="list-style-type: none"> The grid system used is UTM Zone 12 (NAD83). Drillhole collars, (Dip -90°, Azim 0°) Bosydaba#1: 4,303,268.5N, 576,941.4E, EL: 4,125.7' Mt Fuel-Skyline Geysir 1-25: 4,303,066.8, 577,018.7E, EL: 4,120'
	Data Aggregation Methods	<ul style="list-style-type: none"> In reporting Exploration Results, weighting averaging techniques, maximum and/or minimum grade Brine samples taken in holes were averaged (arithmetic average) without 14 Criteria JORC Code explanation Commentary truncations (e.g. cutting of high grades) and cut-off grades are usually Material and should be stated. Where aggregate intercepts incorporate short lengths of high-grade results and longer lengths of low-grade results, the procedure used for such aggregation should be stated and some typical examples of such aggregations should be shown in detail. The assumptions used for any reporting of metal equivalent values should be clearly stated. 	<ul style="list-style-type: none"> No weighting has been carried out. No brine samples have been collected to assay for lithium in the past exploration programs at the Mt Fuel well.
	Relationship Between Mineralization Widths and Intercept Lengths	<ul style="list-style-type: none"> These relationships are particularly important in the reporting of Exploration Results. If the geometry of the mineralization with respect to the drill hole angle is known, its nature should be reported. If it is not known and only the down hole lengths are reported, there should be a clear statement to this effect (e.g. 'down hole length, true width not known'). 	<ul style="list-style-type: none"> The sediments hosting the brine aquifer are interpreted to be essentially perpendicular to the vertical oil wells. Therefore, all reported thicknesses are believed to be accurate. Brines are collected and sampled over the entire perforated width of the zone The Mississippian Units are assumed to be porous and permeable over its entire vertical width based on drilling records.
	Diagrams	<ul style="list-style-type: none"> Appropriate maps and sections (with scales) and tabulations of intercepts should be included for any significant discovery being reported. These should include, but not be limited to a plan view of drill hole collar locations and appropriate sectional views. 	<ul style="list-style-type: none"> The appropriate diagrams are shown in the text showing the location of the wells.
	Balanced Reporting	<ul style="list-style-type: none"> Where comprehensive reporting of all Exploration Results is not practicable, representative reporting of both low and high grades and/or widths should be practiced to avoid misleading reporting of Exploration Results. 	<ul style="list-style-type: none"> No new exploration results have been reported. The historical wells intersected muds and brines but only one sample was assayed while drilling the oil exploration well The wells have been Plugged and Abandoned and tested for oil shows and was not assayed for lithium brines

Criteria	JORC Code Explanation	Commentary
Other Substantive Exploration Data	<ul style="list-style-type: none"> Other exploration data, if meaningful and material, should be reported including (but not limited to): geological observations; geophysical survey results; geochemical survey results; bulk samples - size and method of treatment; metallurgical test results; bulk density, groundwater, geotechnical and rock characteristics; potential deleterious or contaminating substances. 	<ul style="list-style-type: none"> One geochemical sample had been assayed for salts from the Mt Fuel-Skyline Geyser well.
Further Work	<ul style="list-style-type: none"> The nature and scale of planned further work (e.g. tests for lateral extensions or depth extensions or large-scale step-out drilling). Diagrams clearly highlighting the areas of possible extensions, including the main geological interpretations and future drilling areas, provided this information is not commercially sensitive. 	<ul style="list-style-type: none"> The future wells and sampling planned will cover the Leadville Limestone. Future wells will focus on the current wells surrounding the proposed locations to increase the JORC resource.