

ASX RELEASE (21 OCTOBER 2025)

## High grade copper and gold mineralised zones at Muscleville

### Acquisition of Molloy Regional EPM 27804

Tartana Minerals Limited (ASX: TAT) ("Tartana" or "the Company") is pleased to advise that recent sampling at the Muscleville prospect, located within the Company's Mining Leases and close to the Tartana Copper Mine, has returned strong copper and gold results that enhance future drill targets. In addition, the Company has entered into an agreement to acquire 100% of the Molloy Regional Project (EPM 27804), covering highly prospective ground along strike from the historic Mount Molloy copper-zinc mine in Far North Queensland.

#### Key Results:

- Costean 1: 4m @ 2.07 g/t gold and 20.5 g/t silver, with grab sampling returning up to 6.48 g/t gold and 38.4 g/t silver.
- Costean 2: 9m @ 1.04% copper, including 3m @ 2.68% copper with 13.6 g/t silver.
- Historic workings: Rock chips west of the Tartana pit assayed up to 11.9% copper
- Agreement has been reached to acquire Molloy Regional EPM 27804 covering prospective stratigraphic extensions of the Mount Molloy copper mine. Acquisition price is 10 million TAT shares payable on successful tenement transfer.

#### Muscleville Exploration (Tartana Mining Leases)

The Muscleville results confirm both copper and gold-silver mineralisation in new zones near the existing Tartana Copper Mine open pit (Fig.1 and Table 1). Costean 1 (Fig. 2) highlights structurally controlled gold-silver mineralisation with pathfinder elements that support broader exploration potential. Costean 2 confirms copper-silver mineralisation (Fig. 3) adjacent to historic workings, interpreted to connect with known mineralised structures drilled in earlier campaigns.

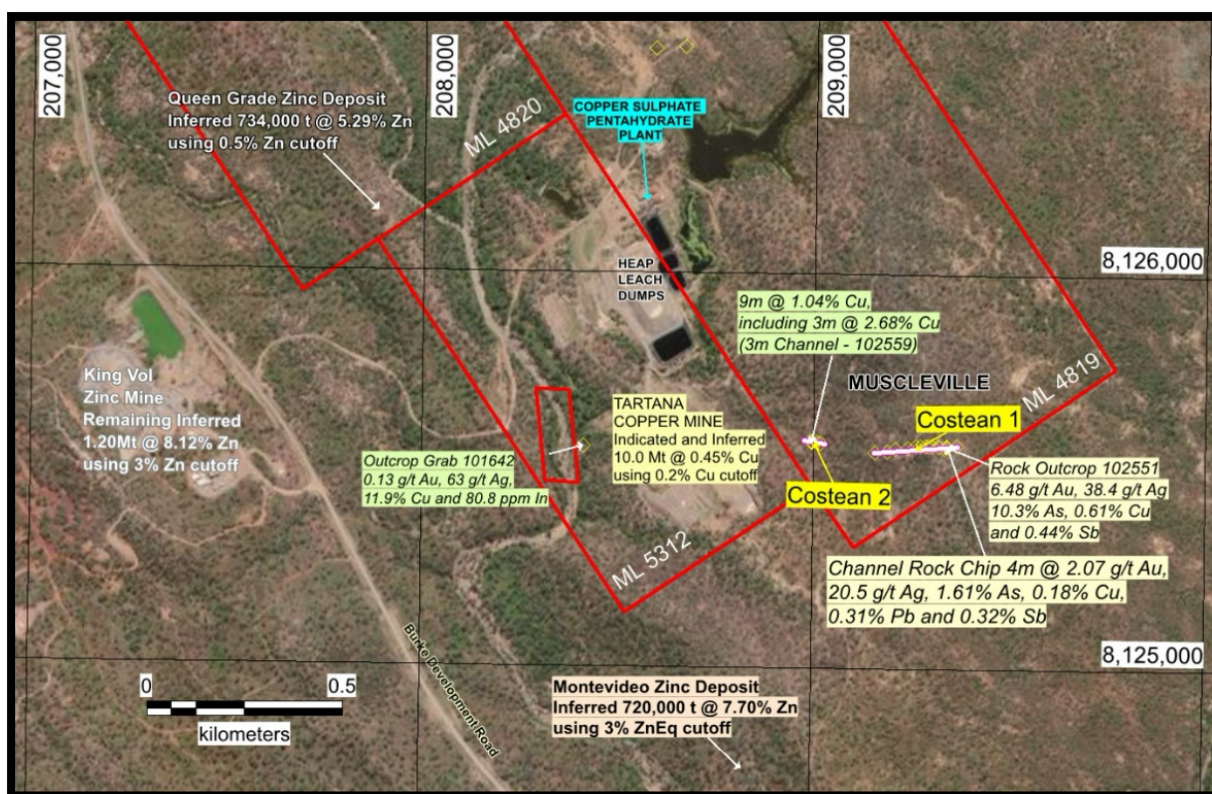


Figure 1. Highlight assay results from rock chip sampling on ML 5312 and ML 4819 at Tartana Copper minesite. Plan view showing the Tartana Open Pit Copper Mine in ML 5312 and the location of recently excavated Costean 1 (215m in length) and Costean 2 (53m in length) to the east of the Tartana pit at Muscleville in ML 4819. Surface rock samples with assay results of note are indicated. Refer to Table 1 for sample location and selected assay details of all samples, including those highlighted. Mineral resource estimates for copper below the Tartana open pit to 130m depth and for zinc at Queen Grade to 160m depth can be found in the Company ASX announcements of 9 February 2023 and 14 February 2023 respectively, along with a review and discussion of historical exploration activities in ASX announcement dated 26 May 2021.

Importantly, these zones at Muscleville lie within the Valentino Exploration Target, previously estimated at 3.9–27.0 Mt grading 0.5–0.8% copper (containing 20–215 kt copper, as disclosed in ASX announcement dated 26 May 2021). The potential quantity and grade of this Exploration Target at Valentino is conceptual in nature and there has been insufficient exploration to estimate a Mineral Resource according to the guidelines of the JORC Code (2012) and it is uncertain if further exploration will result in the estimation of a Mineral Resource.

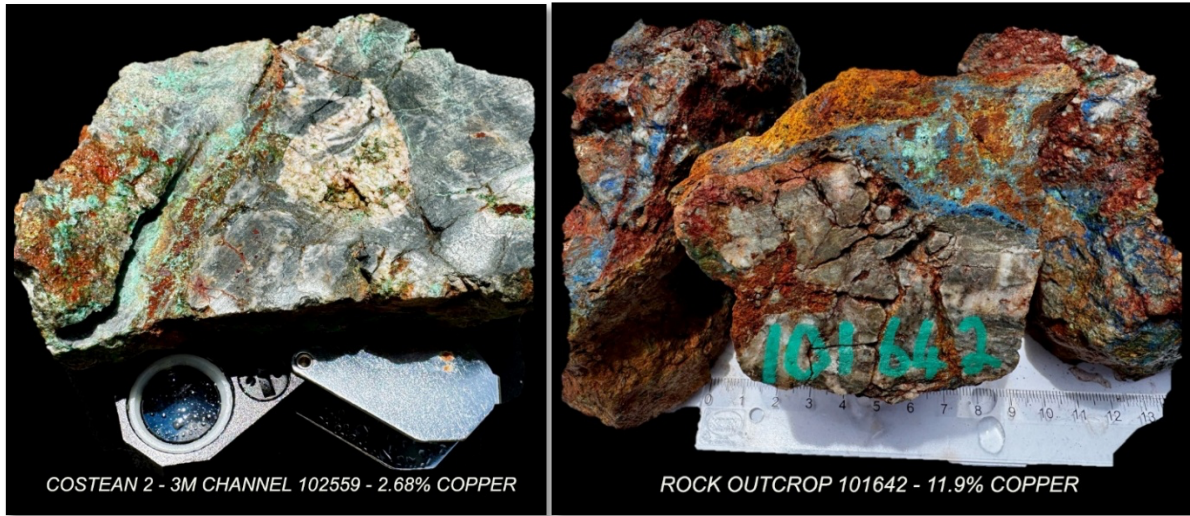
Table 1. Assays results from rock chip sampling, mostly from Muscleville within the mining leases at Tartana.

SampNo	Location	Type	Northing 55S	Easting 55S	Au	Ag	As	Bi	Cu	In	Pb	Sb	Te	W	Zn
101642	Bowler Creek	RO	8125558	208411	0.13	63	1.04%	502	11.9%	80.8	35.5	70	1.03	1480	253
101643	Bowler Creek	Mullock	8125558	208411	0.218	14.7	4270	346	3.83%	23.2	92.9	44.6	0.9	59.2	80
101644	Rubbish Dump	RO	8126568	208587	0.07	1.32	1895	11.75	276	0.765	148.5	69.1	0.72	269	11
101645	Rubbish Dump	RO	8126573	208662	0.005	0.27	132.5	3.95	401	0.538	23.6	34.4	<0.05	12.6	7
101647	Muscleville - Costean 1	Channel 1m	8125566	209318	0.013	1.83	350	17.75	1030	0.886	85.7	67.6	0.12	11.8	32
101648	Muscleville - Costean 1	Channel 1m	8125566	209302	0.009	2.01	344	14.6	198	0.686	67.9	77.7	0.15	8.3	9
101649	Muscleville - Costean 1	Channel 1m	8125567	209292	0.008	1.38	131	39.5	206	1.28	200	75.3	0.2	14.4	32
101650	Muscleville - Costean 1	Channel 1m	8125567	209286	<0.005	0.62	100.5	0.62	148	0.277	47.9	11.7	<0.05	8.7	45
102545	Muscleville - Costean 1	Channel 1m	8125566	209273	0.058	1.02	679	5.09	204	0.54	79.4	9.19	0.19	7.5	38
102546	Muscleville - Costean 1	Channel 1m	8125566	209261	0.015	1.19	272	7.45	1195	0.564	41.9	7.38	0.09	4.9	98
102547	Muscleville - Costean 1	Channel 1m	8125560	209241	0.064	0.99	534	1.84	267	0.406	34.3	13.25	0.05	9.6	14
102548	Muscleville - Costean 1	Channel 1m	8125558	209210	0.005	1.18	61.4	1.62	674	0.569	170	7.7	<0.05	10.6	34
102549	Muscleville - Costean 1	Channel 1m	8125552	209188	<0.005	0.38	47.5	1.34	1630	0.448	16.8	5.23	<0.05	5.4	100
102550	Muscleville - Costean 1	Channel 1m	8125549	209156	0.013	0.24	131.5	1.67	298	0.28	24.7	16.85	<0.05	7.6	65
102551	Muscleville	RO	8125565	209338	6.48	38.4	10.3%	295	6130	22.5	8930	4350	8.47	4.2	194
102552	Muscleville - Costean 1	1m channel	8125566	209366	0.025	0.34	459	2.14	150	0.245	77.3	24.7	<0.05	1.3	30
102553	Muscleville - Costean 1	1m channel	8125561	209335	1.16	36.2	3.22%	1120	4730	14.25	7990	3950	2.5	3.3	54
102554	Muscleville - Costean 1	3m channel	8125565	209340	2.37	15.2	1.07%	170	847	8.23	1425	2910	0.31	10.1	29
102555	Muscleville - Costean 1	1 m channel	8125564	209321	0.007	1.68	127.5	1.45	1555	0.422	61.5	11.55	<0.05	5.4	84
102556	Muscleville - Costean 2	1 m channel	8125571	209018	0.008	0.65	270	8.34	441	0.396	57.5	32.6	<0.05	6.9	38
102557	Muscleville - Costean 2	1m channel	8125573	209009	0.013	0.86	184	4.14	980	0.46	21.3	15.95	<0.05	8.8	104
102558	Muscleville - Costean 2	3m Channel	8125574	208996	0.005	3.38	180.5	3.43	1940	1.89	60.2	8.65	<0.05	9.9	64
102559	Muscleville - Costean 2	3m Channel	8125574	208994	0.007	13.55	482	7.13	2.68%	6.57	88.7	14.85	0.08	21.2	204
102560	Muscleville - Costean 2	3m Channel	8125575	208992	0.009	2.8	505	6.2	2400	2.59	24.6	10.45	<0.05	8.5	90

All assay results in parts per million unless indicated by percentage



Figure 2. Channel rock chip sample 102554 (3m length in foreground) was collected along the bottom of Costean 1 at Muscleville and returned 3m @ 2.37 g/t Au within a 4m wide breccia zone that assayed 2.07 g/t Au. This structurally controlled zone of gold-silver mineralisation trends northerly along the sheared contact separating the Chillagoe Formation from the Hodgkinson Formation in the east. Outcrop grab (SampNo 102551) of silicified breccia adjacent to the costean at this location assayed 6.48 g/t Au, 38.4 g/t Ag, 10.3% As and 0.44% Sb.



*Figure 3. (a) A rock specimen collected from a three metre channel rock chip sample 102559 from Costean 2 at Muscleville, within ML4819 at Tartana, that assayed 3m @ 2.68% copper and 13.6 g/t silver and (b) Rock chip outcrop (SampNo 101642) from historic workings near Bowler Creek 250m to the west of the Tartana pit assayed 11.9% copper, 0.13 g/t gold, 63.0 g/t silver and 80.8 ppm indium.*

The results will be used to refine upcoming drill programs at Muscleville and across the Valentino target area. Follow-up drilling will aim to extend identified zones along strike and at depth, building on historic intersections such as 82.3m @ 0.60% Cu in hole TRDH18 and 9m @ 0.71% Cu in hole RD003.

### **Acquisition of Molloy Regional Project (EPM 27804)**

Exploration Permit for Minerals (EPM) 27804, known as the Molloy Regional Project, comprises 52 sub-blocks located approximately 35 kilometres west of Palm Cove, Queensland (Fig. 4). The tenement includes strike extensions both north and south of the historic Mount Molloy Copper/Zinc Mine and lies east of the Freedom Gold Mine.

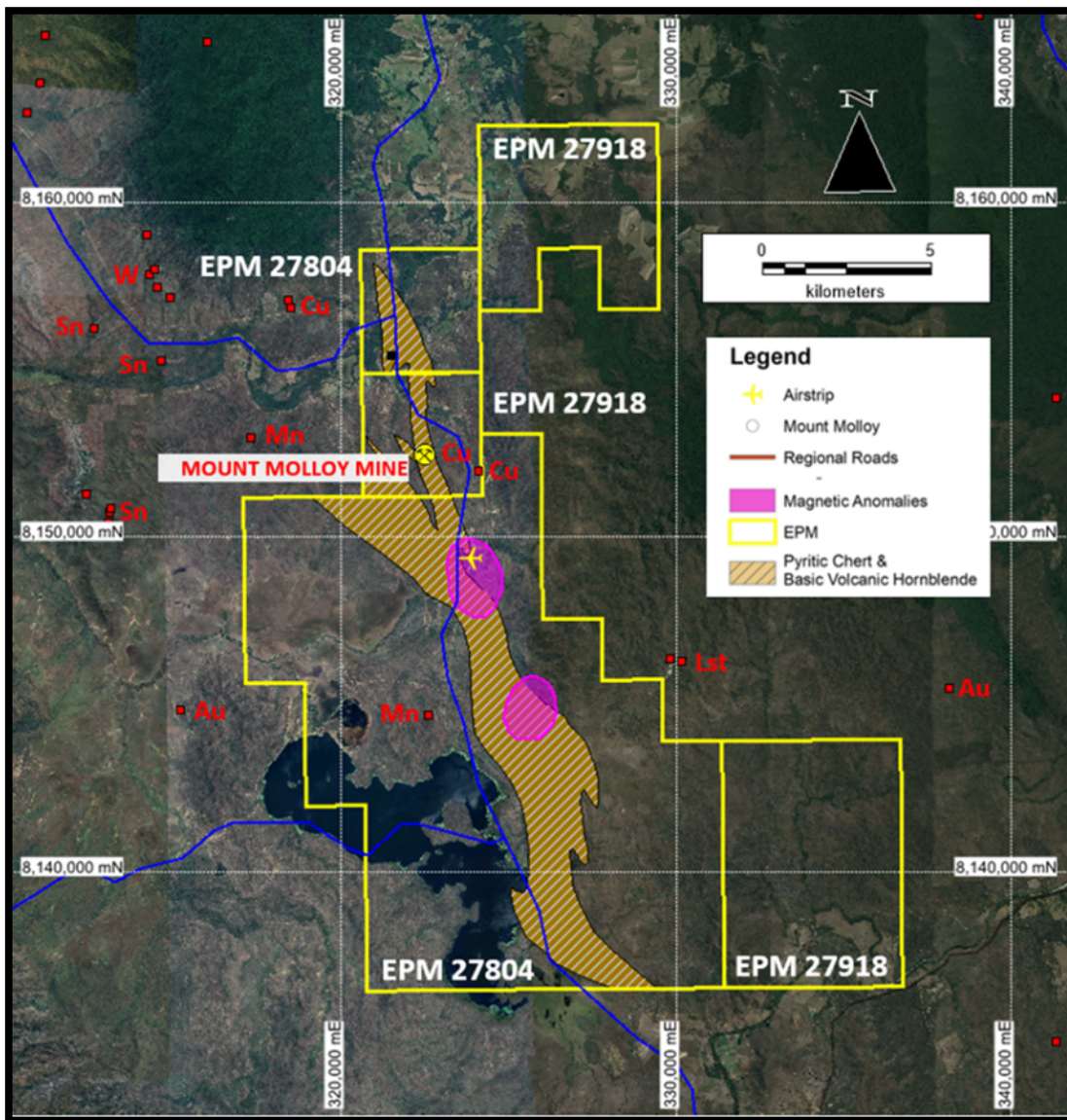


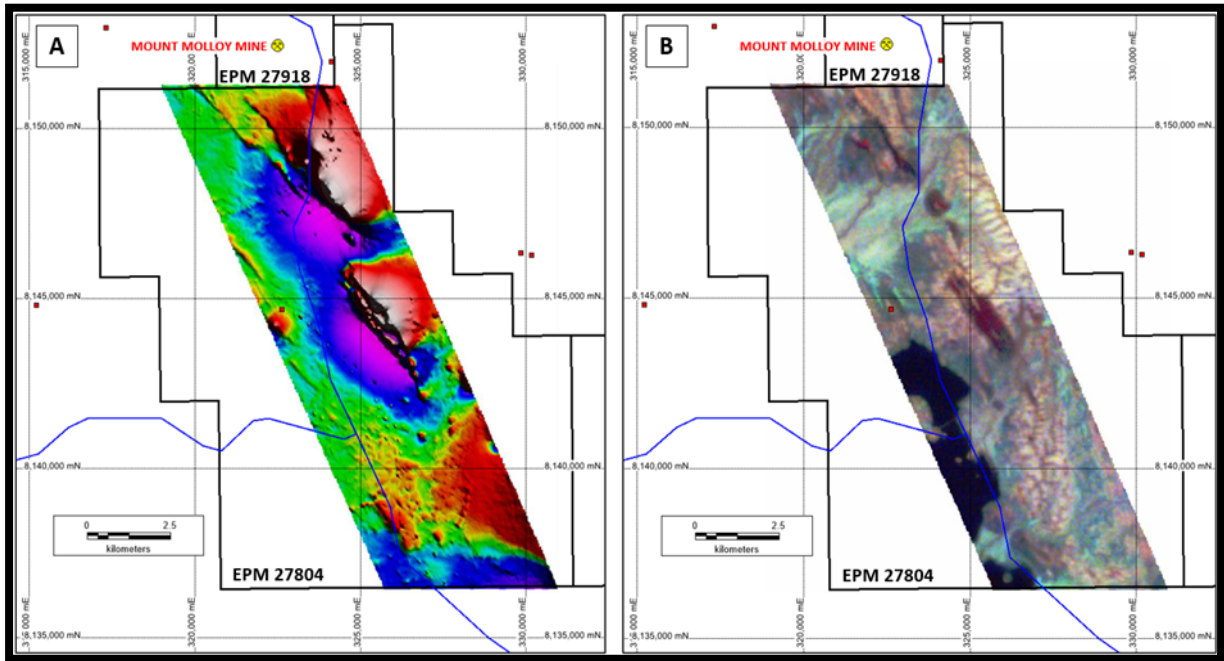
Figure 4: Molloy Regional Project area showing location of historic Mount Molloy high-grade copper mine and prospective corridor to the south within EPM 27804

The Project area covers Hodgkinson Province rocks, including the Hodgkinson Formation and Molloy Beds, which are known to host significant gold and copper mineralisation. Tartana’s exploration focus will be to identify bulk-tonnage, open-pittable gold and copper targets within these prospective host lithologies.

The historic Mount Molloy Copper Mine is hosted within a north–northwest trending lode emplaced along a shear zone within cleaved siltstone and fine-grained quartz greywacke. Lodes range up to six metres wide and average around two metres, with underground workings extending over 243 metres of strike. Recorded production to 1905 totalled 7,109 tonnes at 15.9% copper.

The graben structure that hosts the Molloy Beds is interpreted to extend throughout the Molloy Regional Project area. However, recessive lithologies and Tertiary–Quaternary alluvial cover may obscure potential extensions of mineralisation.

Previous exploration by Curwon included prospecting and reconnaissance mapping, as well as a high-resolution airborne magnetic and radiometric survey conducted in October 2022. The survey was flown using a modified AS350B Squirrel helicopter equipped with geophysical instrumentation, along east–west flight lines spaced 50 metres apart at a nominal flight height of 50 metres, for a total of 1,690 line kilometres (Fig. 5).



*Figure 5: EPM 27804 airborne magnetic and radiometric survey (A) TMI Magnetics image; (B) Ternary Radiometric image.*

Interpretation of the survey data highlighted a major north–northwest trending structure with two prominent magnetic anomalies along a fault contact, representing priority targets for follow-up exploration. Further modelling and interpretation of this data are planned to refine drill targets.

The Company has negotiated the acquisition of the Molloy Regional EPM 27804 from Curwon Pty Ltd, which will form part of the Company’s Herberton and Dimbulah tenement package which includes prospective tin-tungsten-antimony-REE-copper projects. Curwon Pty Ltd is controlled by Mr Duncan Hardie, a significant shareholder and supporter of the Company over many years. The consideration for the acquisition is 10 million fully paid ordinary TAT shares, payable upon successful transfer of the tenement.

The acquisition of the Molloy Regional Project complements Tartana’s existing Dimbulah and Herberton projects, expanding the Company’s footprint across the Hodgkinson Province. The addition of this project provides further flexibility and optionality for any future corporate initiatives, including the potential spin-off of non-core assets into a separate venture.

## Managing Director's Comment

Tartana Managing Director, Dr Stephen Bartrop, said:

"These results demonstrate the potential to uncover further copper and gold mineralisation across our mining leases at Tartana. We are excited to follow up with drilling that can unlock value from Muscleville and the broader Valentino target. Since listing in 2021, we have successfully converted exploration targets into resources at Queen Grade (zinc) and below the Tartana Mine (copper). Muscleville adds further upside to our exploration portfolio with the benefit of being on a granted mining lease.

The Company is investigating opportunities to realise market value for its Herberton and Dimbulah tenement package commencing with drilling in the 1H 2026. The Molloy Regional project now forms an integral part of this package."

### COMPETENT PERSON'S STATEMENT

*The information in this announcement is based on the results and interpretation of historical and current exploration within the Tartana Mining Leases. A compilation and assessment of the historical exploration work was completed by SRK Consulting (Australasia) Pty Ltd and discussed in the report entitled 'Independent Geologist's Report on the mineral assets of Tartana Resources Limited', 19 May 2021. Additional interpretation was provided by Tartana geologists and used for exploration planning purposes. Michael Thirnbeck, who is a Member of the AusIMM, Australia prepared this announcement and has sufficient experience which is relevant to the style of mineralisation and type of deposit under consideration and to the activity which he is undertaking to qualify as a Competent Person as defined in the 2012 Edition of the 'Australasian Code for Reporting of Exploration Results, Mineral Resources and Ore Reserves'. Michael Thirnbeck has consented to the inclusion in this report of the matters based on his information in the form and context in which they appear.*

ENDS

This announcement has been approved by the Board of Tartana Minerals Limited (ASX:TAT).

Further Information:

**Dr Stephen Bartrop**

Managing Director

**Tartana Minerals Limited**

P: + 61 2 9392 8032

For Investor and Media Enquiries:

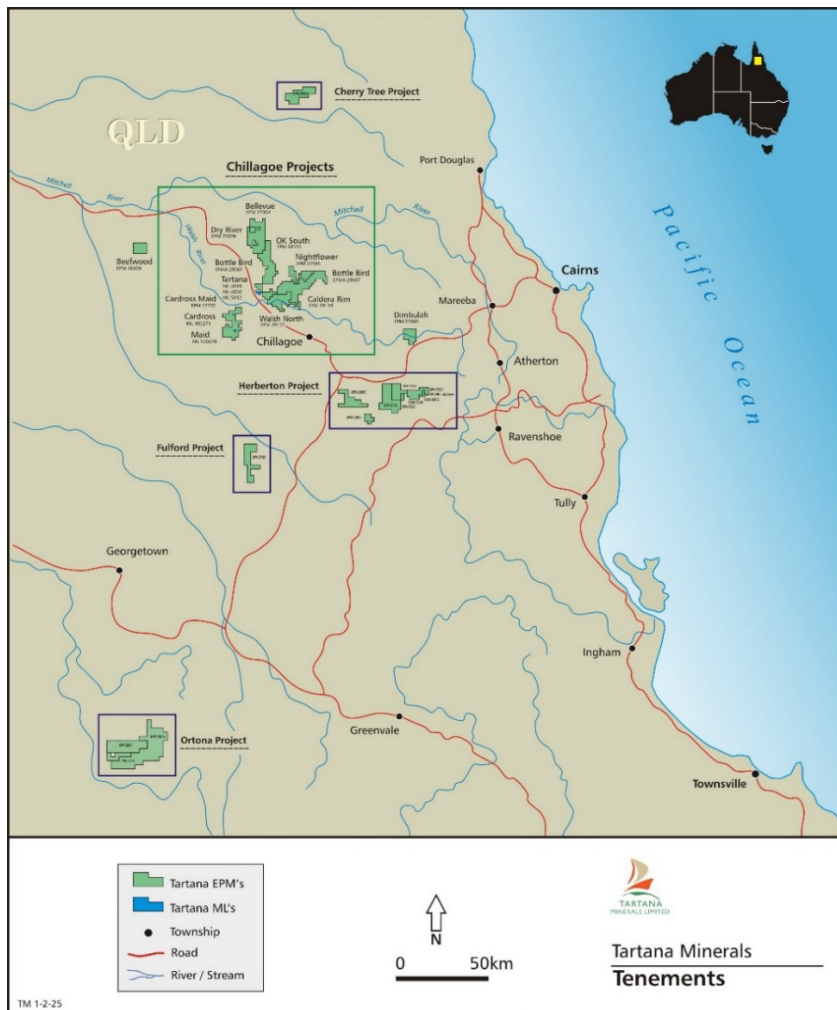
**Reign Advisory**

E: [tat@reignadvisory.com](mailto:tat@reignadvisory.com)

P: + 61 2 9174 5388

## About Tartana Minerals Limited (ASX:TAT)

Tartana Minerals Limited is an ASX-listed copper producer with mining and exploration projects in Far North Queensland, focused on copper, zinc and gold. The Company is advancing its Tartana Mining Leases and broader portfolio to grow resources and build shareholder value through systematic exploration and development.



## Disclaimer Regarding Forward-Looking Statements

This ASX announcement contains various forward-looking statements. All statements, other than statements of historical fact, are forward-looking statements. Forward-looking statements are inherently subject to uncertainties in that they may be affected by a variety of known and unknown risks, variables and factors that could cause actual values or results, and performance or achievements to differ materially from the expectations described in such forward-looking statements. Tartana Minerals Limited does not give any assurance that the anticipated results, performance or achievements expressed or implied in those forward-looking statements will be achieved.

## JORC Code, 2012 Edition – Table 1

### Section 1 Sampling Techniques and Data

<b>Sampling techniques</b>	<ul style="list-style-type: none"> <li>• Muscleville rock chip channel samples, generally 1 or 3m in length collected from selected mineralised and/or altered zones exposed within excavator-dug costeans within Mining Leases at Tartana.</li> <li>• Outcrop grab from rocky exposures or mullock rock samples from workings were collected based on geological determination.</li> <li>• Mullock samples were collected to represent the style of mineralisation seen in and around old workings.</li> <li>• Hand specimens of selected noteworthy samples were bagged separately for future reference</li> <li>• A portable handheld XRF unit was selectively used as re-assurance that certain outcrop zones contained indications of target gold and copper mineralisation.</li> </ul> <p>The high-resolution airborne magnetic and radiometric survey was undertaken over Molloy Regional project (EPM 27804) in October 2022. The survey was flown using a modified AS350B Squirrel helicopter equipped with geophysical instrumentation, along east–west flight lines spaced 50 metres apart at a nominal flight height of 50 metres, for a total of 1,690 line kilometres.</p> <p><b>Magnetometers</b> Geometrics G-823A tail sensor, mounted in a boom housing.</p> <ul style="list-style-type: none"> <li>• Sensor Type - Cesium vapour</li> <li>• Resolution - 0.001 nT</li> <li>• Sensitivity - 0.01 nT</li> <li>• Sample Rate - 20 Hz (≈2.5 metre sample interval)</li> <li>• Compensation - 3-axis fluxgate magnetometer</li> </ul> <p><b>Gamma-Ray Spectrometer</b> RSI RS-500 gamma-ray spectrometer, incorporating 2x RSX-4 detector packs.</p> <ul style="list-style-type: none"> <li>• Total Crystal Volume - 32 L</li> <li>• Channels - 1024</li> <li>• Sample Rate - 2 Hz (≈25 metre sample interval)</li> <li>• Multi-peak automatic gain stabilisation</li> </ul>
<b>Drilling techniques</b>	<ul style="list-style-type: none"> <li>• N/A</li> </ul>
<b>Drill sample recovery</b>	<ul style="list-style-type: none"> <li>• N/A</li> </ul>
<b>Logging</b>	<ul style="list-style-type: none"> <li>• Sample sites were described and often photographed. Lithologies were identified in the field.</li> </ul>
<b>Sub-sampling techniques and sample preparation</b>	<ul style="list-style-type: none"> <li>• Standard laboratory sample preparation, drying, crushing and pulverising entire sample to homogenise sample to allow subsampling for the various assay techniques.</li> <li>• Laboratory internal QA/QC monitored sampling preparation and assaying accuracy</li> <li>• Sample sizes are industry standard and considered appropriate.</li> </ul>
<b>Quality of assay data and laboratory tests</b>	<ul style="list-style-type: none"> <li>• Rock chip sample preparation was undertaken at ALS Laboratory in Townsville, Queensland, Australia. Samples were sorted, weighed, dried, entirely crushed and pulverised to 85% passing -75µm (Code Prep-22)</li> </ul>

	<ul style="list-style-type: none"> <li>• Au was analysed at the ALS lab in Townsville by 30g Fire Assay and AAS for trace level &gt;0.001 to &lt;10.0 g/t Au (Code Au-AA23) and ore grade &gt;10 g/t Au (Code Au-AA25).</li> <li>• Analytical method four acid digestion with ICP-MS finish (Code ME-MS61) for 61 elements was undertaken at ALS laboratory in Brisbane. The following elements were analysed: Ag, Al, As, Ba, Be, Bi, Ca, Cd, Ce, Co, Cr, Cs, Cu, Fe, Ga, Ge, Hf, In, K, La, Li, Mg, Mn, Mo, Na, Nb, Ni, P, Pb, Rb, Re, S, Sb, Sc, Se, Sn, Sr, Ta, Te, Th, Ti, Tl, U, V, W, Y Zn, &amp; Zr</li> <li>• Over limit ore grade samples for Ag, As, Cu and Pb were analysed in ALS Brisbane</li> <li>• Laboratory QA/QC was undertaken</li> <li>• Tie lines were flown to analyse the cross overs and assist with levelling the survey.</li> </ul>
<b>Verification of sampling and assaying</b>	<ul style="list-style-type: none"> <li>• Rock chip data was collected and documented by Tartana geologists in the field and reported. All data is captured in a digital database</li> <li>• Data entry involves constructing Excel spreadsheets directly from final laboratory assay reports delivered electronically in .pdf and .csv format.</li> <li>• Database verified by Tartana exploration management and consultant.</li> <li>• No assay data was adjusted</li> </ul>
<b>Location of data points</b>	<ul style="list-style-type: none"> <li>• Rock chip locations were surveyed using handheld Garmin GPS to an accuracy of approximately <math>\pm 3\text{m}</math></li> <li>• Grid system used was Map Grid of Australia 2020 (MGA2020) Zone 55</li> </ul> <p><b>Altimeters</b> Bendix/King KRA 405 radar altimeter.</p> <ul style="list-style-type: none"> <li>• Resolution - 0.3 m</li> <li>• Sample Rate - 20 Hz</li> <li>• Range - 0-760 m</li> </ul> <p><b>Base Station Magnetometers</b> GEM Overhauser / Scintrex ENVIMAG proton precession.</p> <ul style="list-style-type: none"> <li>• Sample Rate - 1.0 Hz / 0.5 Hz</li> </ul> <p><b>Global Positioning System</b></p> <ul style="list-style-type: none"> <li>• NovAtel OEM 719 DGPS Receiver.</li> </ul> <p>Survey line navigation and data positioning provided by a Novatel L1/L2 DGPS Receiver. GPS X, Y and Z recorded in WGS84 UTM coordinates. GPS data recorded at a sample rate of 2 readings per second.</p>
<b>Data spacing and distribution</b>	<ul style="list-style-type: none"> <li>• Samples were not collected on an installed grid, but as presented by mineralised outcrop</li> <li>• Samples are not composited for analysis.</li> </ul>
<b>Orientation of data in relation to geological structure</b>	<ul style="list-style-type: none"> <li>• Costeans at Muscleville were dug perpendicular to regional structural and lithological trends, with selected channel sampling along the costeans also perpendicular to mapped local structures and bedding.</li> <li>• The orientation of the costeaning is considered adequate for an unbiased assessment with respect to interpreted structural controls of mineralisation.</li> </ul>
<b>Sample security</b>	<ul style="list-style-type: none"> <li>• All rock chip samples were bagged and tied at the sample location into numbered calico sample bags. Generally 5-7 calico bags were grouped and packed into larger plastic bags that were zip tied at Tartana Minesite by the supervising geologist. The entire sample batch of zip tied large plastic bags was transported and hand delivered by Tartana plant personnel directly to ALS laboratory in Townsville.</li> <li>• All sample submissions were documented by ALS tracking system and all assays reported in .csv and .pdf format via email</li> <li>• Pulps and coarse rejects are stored at the ALS facility at Townsville, currently to be discarded after a free 45 day storage period.</li> </ul>

	<ul style="list-style-type: none"> <li>• All magnetic and radiometric data is digitally stored by the contractor and geophysical consultant</li> </ul>
<b>Audits or reviews</b>	<ul style="list-style-type: none"> <li>• Sampling procedures and data collection are frequently reviewed by Tartana exploration personnel. No independent audit of sampling methodologies was deemed necessary for this standard exploration rock chip sampling program. Additional sampling and mapping in and around identified prospective areas could be undertaken as part of any follow-up.</li> <li>• Daily repeats and quality control by Contractor.</li> </ul>

For personal use only

## Section 2 Reporting of Exploration Results

<b>Mineral tenement and land tenure status</b>	<ul style="list-style-type: none"> <li>• Four granted Mining Leases at Tartana – ML4819, 4820, 5312 and 20489</li> <li>• The four contiguous Mining Leases at Tartana cover 324.1 hectares</li> <li>• All Mining Leases held 100% by Tartana Resources Limited, a 100% subsidiary of Tartana Minerals Limited (ASX: TAT)</li> <li>• Rock chip samples reported were collected in MLs 5312 and 4819</li> <li>• EPM 27804 currently held by Curwon Pty. Ltd. pending transfer to Tartana Minerals Ltd. subsidiary Queensland Strategic Metals Pty. Ltd.</li> </ul>
<b>Exploration done by other parties</b>	<ul style="list-style-type: none"> <li>• The QLD Government first proudly announced Tartana Hill as a huge impregnation, a hill veined with copper ore consisting of green carbonates and tile ore in the Herberton District Wardens Report of the 1899 Annual report. Furthermore, the Assistant Govt. geologist described Tartana Hill as an immense copper deposit on Bowler Creek.</li> <li>• Modern drilling programs conducted in Tartana mining leases since 1960s through to 2024</li> <li>• Acknowledgment and appraisal of exploration by other parties include Carpentaria Exploration Company, Outokumpu Exploration Australia, Dominion Mining, Majestic Resources and Solomon Mines.</li> <li>• SRK Consultants compiled an Independent Geologist's Report (2021) on the key prospective targets within the Tartana Mining Leases.</li> <li>• In 2023, Bluespoint Mining Services Pty. Ltd., completed an upgraded JORC Mineral Resource Estimate (MRE) for copper at Tartana and a maiden MRE for zinc at Queen Grade, also within the Tartana Mining Leases.</li> <li>• Historic assessment of Mount Molloy Copper Mine completed by C. Knight (CR_2196)</li> </ul>
<b>Geology</b>	<ul style="list-style-type: none"> <li>• Porphyry copper intruded into structurally deformed sediment</li> <li>• Within the Tartana Hill Resource area – structural complexity was low</li> <li>• Mineralising intrusive currently exposed in the southern pit area</li> <li>• Weathered oxide copper – red ochre, limited malachite and azurite</li> </ul>
<b>Drill hole Information</b>	N/A
<b>Data aggregation methods</b>	<p>Weighting was applied at one location in the eastern end of the Muscleville costean 1 where adjacent channel samples had different sample lengths of 1m and 3m respectively</p> <p>All other samples individual results have been reported.</p>
<b>Relationship between mineralisation widths and intercept lengths</b>	<ul style="list-style-type: none"> <li>• N/A</li> </ul>
<b>Diagrams</b>	<ul style="list-style-type: none"> <li>• Figures attached – see main body of report</li> </ul>
<b>Balanced reporting</b>	<ul style="list-style-type: none"> <li>• Yes. Multiple reports by multiple companies and independent geologists.</li> <li>• Assay results are reported in total with no cut off grades applied.</li> <li>• Reporting of magnetic and radiometric data results is considered balanced</li> </ul>
<b>Other substantive exploration data</b>	<ul style="list-style-type: none"> <li>• All meaningful and material exploration data has been reported</li> <li>• All above companies completed additional exploration and development including geological mapping, geochemistry, surveying, geophysics.</li> <li>• Compilation of all recent and historic geochemical, geological and geophysical data into a GIS database.</li> </ul>

For personal use only

<b>Further work</b>	<ul style="list-style-type: none"><li>• Follow up mapping and sampling in areas of mineralised channel samples seen in Muscleville costeans.</li><li>• Processing and modelling of geophysical datasets</li></ul>

For personal use only