



22 October 2025

COMMENCEMENT OF EXTENSIONAL RC DRILLING AT LORD BYRON TARGETING MINE LIFE EXTENSIONS

Drilling underway at Lord Byron to follow up on recent intercept of 32m @ 7.16g/t Au from 69m

Targeting Mineral Resource Growth and open pit mine life extensions

HIGHLIGHTS

- Extensional RC drilling has commenced at the Lord Byron deposit, part of the **0.9Moz @ 1.7g/t Laverton Gold Project**
- The drilling program has been designed as a follow up to the recently announced¹ results returned proximal to and beneath the Lord Byron South optimised pit shell. These included:
 - LBRC25001
 - **32m @ 7.16g/t Au from 69m**, including **11m @ 15.1 g/t Au from 87m**, and
 - **11m @ 3.13g/t Au from 53m**
 - LBRC25005:
 - **30m @ 3.02g/t Au from 44m**, including **1m @ 15.2 g/t Au from 70m**
 - **2m @ 5.04g/t Au from 78m**
- The drilling identified a **wide zone of high-grade mineralisation beneath the existing Inferred Mineral Resource and presents as a compelling follow-up opportunity**
- A ~1,000m, six-hole program has commenced in order to assess material extensions to the Lord Byron deposit, which remains open to the south along strike and down plunge
- Once the program has been completed, the RC rig will mobilise to the Sandstone Gold Project whilst assays are awaited

Brightstar Resources Limited (ASX: BTR) (**Brightstar** or the **Company**) is pleased to announce the commencement of an RC drilling program at the Lord Byron deposit, located within the Laverton Gold Project.

Lord Byron is located ~10km west of Brightstar's active Fish mine at the Jasper Hills project, and forms part of the company's Laverton Hub, which hosts a current Mineral Resource Estimate (**MRE**) of **0.9Moz @ 1.7g/t Au**.

Lord Byron is approximately ~50km from the site of Brightstar's proposed new 1Mtpa CIL processing plant, outlined in the Menzies-Laverton Definitive Feasibility Study (**DFS**).²

The **Lord Byron deposit** hosts a current Mineral Resource of **251koz @ 1.5g/t Au**, with a potential open pit mine development detailed in the DFS.

This drilling program has been designed to target extensions to the Mineral Resource to the south of the DFS-optimised pit shell to follow up the exception result returned in LBRC25001 (**32m @ 7.16g/t Au from 69m**), which exceeded expectations with **wide zones of high-grade material** intersected just **below the optimised pit shell and defined Inferred Mineral Resource boundary**.

Brightstar's Managing Director, Alex Rovira, commented:

"The next phase of drilling at Lord Byron is an exciting test of the potential for Mineral Resource growth immediately along strike to the existing ~250koz Au Lord Byron deposit. This relatively small drilling campaign is designed to test the geological interpretation of the newly identified zone and assess down-dip and down-plunge continuity of the wide, high-grade mineralisation intersected in Brightstar's recent drilling. The program aims to increase the known extents of the ore body to enable potential addition to future Ore Reserves and mine planning.

Lord Byron, now fully approved and 'mine ready', sits in close proximity to the established and operating Fish underground mine, resulting in significant operational synergies and low start-up costs to get into production.

Workstreams continue to finalise the final permitting and debt financing required to commence construction of the processing plant in Laverton, which is located approximately 50km from Lord Byron."



Figure 1: Drone image looking North-west showing the RC drill rig set up at the Lord Byron deposit. Existing Lord Byron pits can be seen in the background.

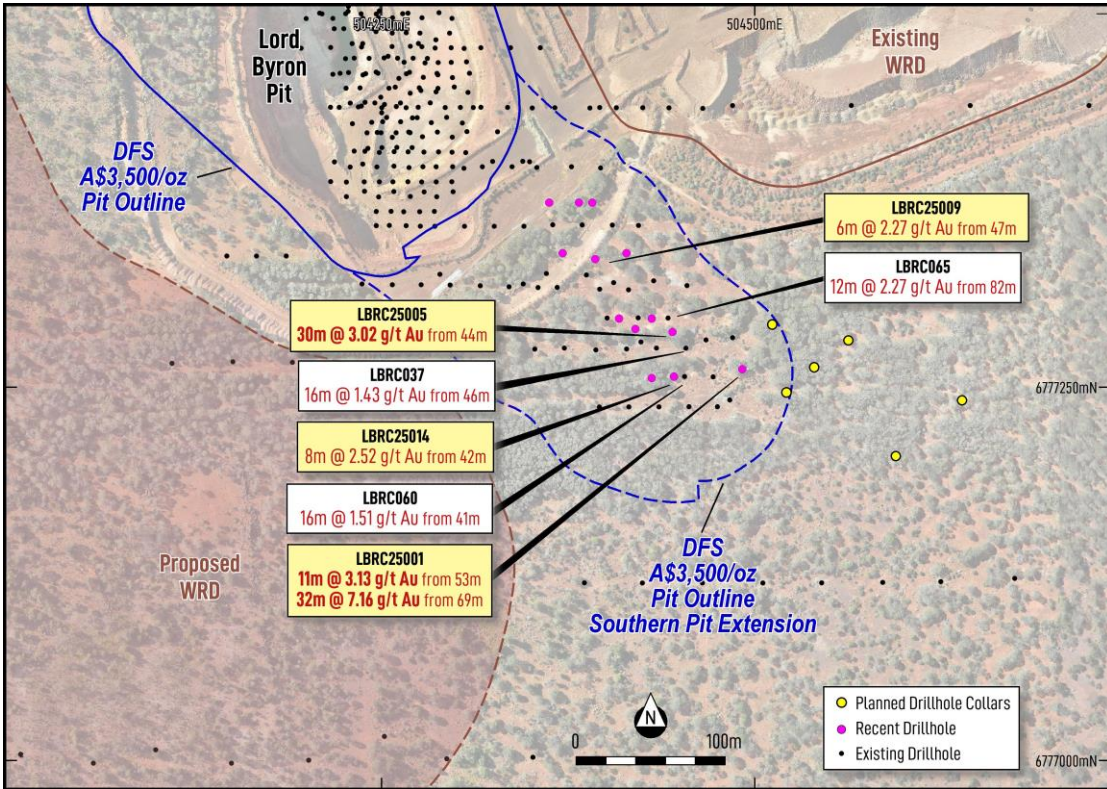


Figure 2: Plan view of the extensional Lord Byron South RC Drill collars (yellow circles), in relation to existing drilling and planned mine infrastructure.

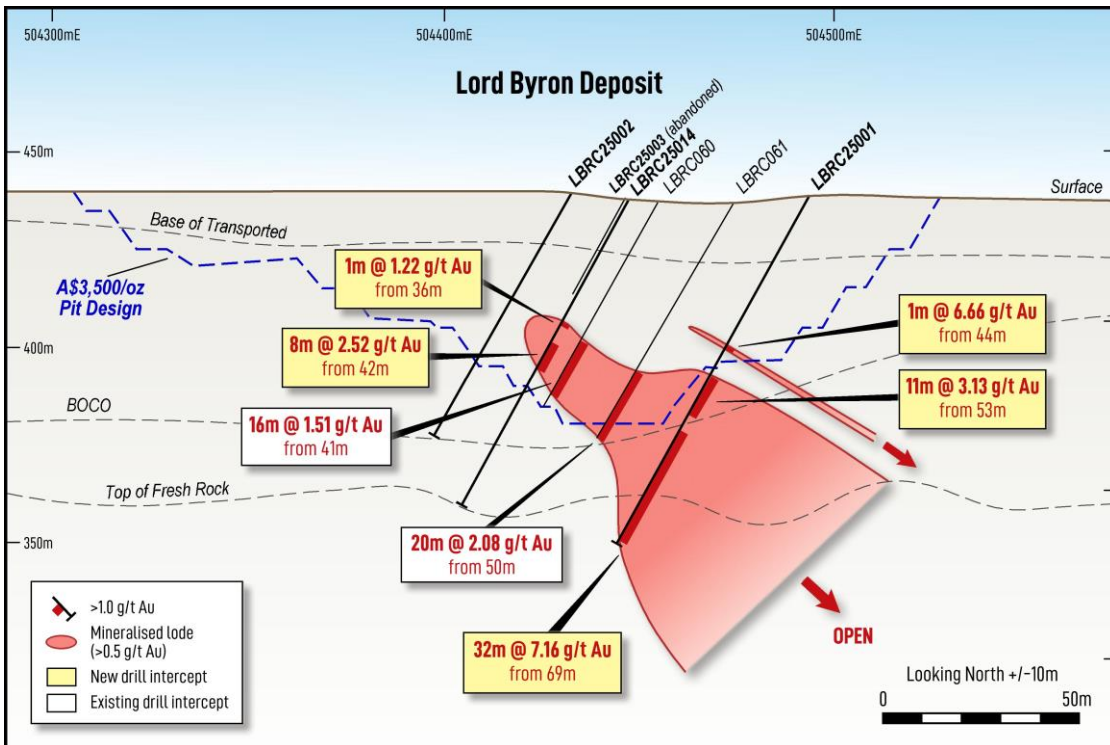


Figure 3: Cross Section at the Lord Byron Deposit, highlighting the high-grade mineralisation intersected in drillhole LBRC25001 that sits beneath the current pit design.

For personal use only

EXPLORATION PROGRAMS ONGOING

Assay results from this program will be provided to the market in the coming weeks once received and analysed.

Elsewhere, underground diamond core drilling continues for the larger drill out at the Fish mine, with the program designed to support a Mineral Resource upgrade which is intended to provide the platform for additional Ore Reserves and mine life extensions for 'Stage 2' at Fish.

In Sandstone, three surface exploration rigs (1x air core, 1x RC, 1x diamond) continue the infill and extensional drilling programs to test new exploration targets and support both Mineral Resource growth and improvements in the classification to underpin the pre-feasibility study underway.

This ASX announcement has been approved by the Managing Director on behalf of the Board of Brightstar.

FOR FURTHER INFORMATION, PLEASE CONTACT:

Alex Rovira

Managing Director

Email: alex@brightstarresources.com.au

Investor Relations

Lucas Robinson

Phone: +61 408 228 889

Email: lucas@corporatetorytime.com

REFERENCES:

1. Refer Brightstar Resources announcement dated 10 September 2025 "Exceptional result of 32m @ 7g/t Au in Lord Byron drilling"
2. Refer Brightstar ASX announcement dated 30 June 2025 "Menzies and Laverton Gold Projects Feasibility Study"

ABOUT BRIGHTSTAR RESOURCES

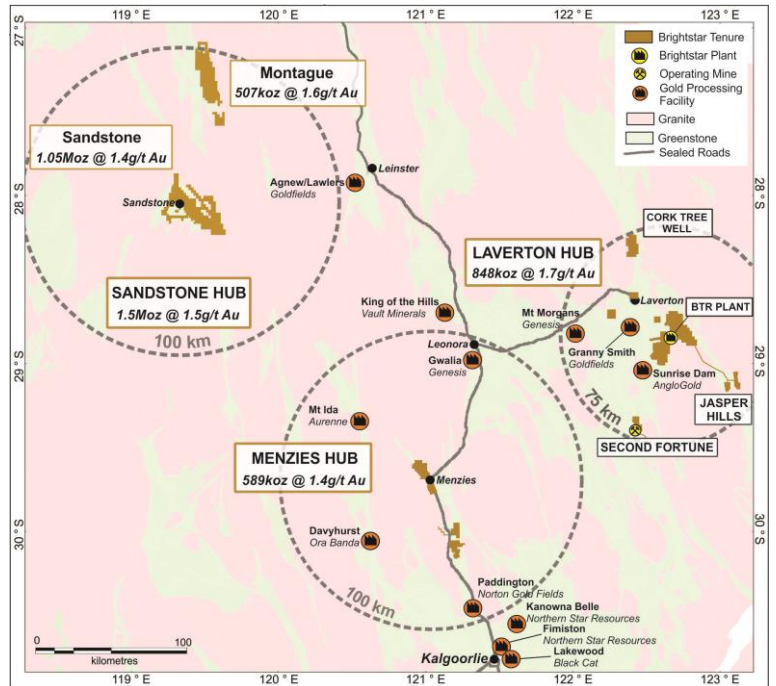
Brightstar Resources Limited is an emerging gold development company listed on the Australian Securities Exchange (ASX: BTR) and based in Perth, WA.

The Company hosts a portfolio of high-quality assets hosted in the Tier-1 jurisdiction of Western Australia, with 3.0Moz of Mineral Resources across the Goldfields and Murchison regions, ideally located near key infrastructure such as sealed highways and on granted mining leases for ready development.

Brightstar owns and operates the underground Second Fortune and Fish Gold Mines south of Laverton, which are processed by Genesis Minerals Ltd (ASX: GMD) at their Laverton Mill under an Ore Purchase Agreement.

A Definitive Feasibility Study on the Menzies and Laverton Gold Projects, released in June 2025, outlined the production of approximately 70,000oz per annum for five years across several open pit and underground mines with excellent financial metrics.

Brightstar aspires to be a leading mid-tier gold miner via a staged growth strategy, with current operations and proposed expansions providing a great platform for growth.



For personal use only

Consolidated JORC Resources of Laverton, Menzies & Sandstone Hubs

Location	Cut-off	Measured			Indicated			Inferred			Total		
		g/t Au	kt	g/t Au	koz	kt	g/t Au	koz	kt	g/t Au	koz	kt	g/t Au
Alpha	0.5	623	1.6	33	374	2.1	25	455	3.3	48	1,452	2.3	106
Beta	0.5	345	1.7	19	576	1.6	29	961	1.7	54	1,882	1.7	102
Cork Tree Well	0.5	-	-	-	3,264	1.6	166	3,198	1.2	126	6,462	1.4	292
Lord Byron	0.5	311	1.7	17	1,975	1.5	96	2,937	1.5	138	5,223	1.5	251
Fish	1.6	25	5.4	4	199	4.5	29	153	3.2	16	376	4.0	49
Gilt Key	0.5	-	-	-	15	2.2	1	153	1.3	6	168	1.3	8
Second Fortune (UG)	2.5	24	15.3	12	34	13.7	15	34	11.7	13	92	13.4	40
Total – Laverton		1,328	2.0	85	6,437	1.7	361	7,891	1.6	401	15,655	1.7	848
Lady Shenton System (Pericles, Lady Shenton, Stirling)	0.5	-	-	-	2,590	1.5	123	2,990	1.6	150	5,580	1.5	273
Yunnadaga	0.5	-	-	-	1,270	1.3	53	2,050	1.4	90	3,320	1.3	144
Yunnadaga (UG)	2	-	-	-	-	-	-	110	3.3	12	110	3.3	12
Aspacia	0.5	-	-	-	137	1.7	7	1,238	1.6	62	1,375	1.6	70
Lady Harriet System (Warrior, Lady Harriet, Bellenger)	0.5	-	-	-	520	1.3	22	590	1.1	21	1,110	1.2	43
Link Zone	0.5	-	-	-	160	1.3	7	740	1.0	23	890	1.0	29
Selkirk	0.5	-	-	-	30	6.3	6	140	1.2	5	170	2.1	12
Lady Irene	0.5	-	-	-	-	-	-	100	1.7	6	100	1.7	6
Total – Menzies		-	-	-	4,707	1.4	218	7,958	1.4	369	12,655	1.4	589
Montague-Boulder	0.6	-	-	-	522	4.0	67	2,556	1.2	96	3,078	1.7	163
Whistler (OP) / Whistler (UG)	0.5/2.0	-	-	-	-	-	-	1,700	2.2	120	1,700	2.2	120
Evermore	0.6	-	-	-	-	-	-	1,319	1.6	67	1,319	1.6	67
Achilles Nth / Airport	0.6	-	-	-	221	2.0	14	1,847	1.4	85	2,068	1.5	99
Julias ¹ (Resource)	0.6	-	-	-	1,405	1.4	61	503	1.0	16	1,908	1.3	77
Julias ² (Attributable)	0.6	-	-	-	-	-	-	-	-	-	1,431	1.3	58
Total – Montague (Global)		-	-	-	2,148	2.1	142	7,925	1.5	384	10,073	1.6	526
Total – Montague (BTR)^{1,2}		-	-	-	1,797	2.1	127	7,799	1.5	380	9,596	1.6	507
Lord Nelson	0.5	-	-	-	1,500	2.1	100	4,100	1.4	191	5,600	1.6	291
Lord Henry	0.5	-	-	-	1,600	1.5	78	600	1.1	20	2,200	1.4	98
Vanguard Camp	0.5	-	-	-	400	2.0	26	3,400	1.4	191	3,800	1.5	217
Havilah Camp	0.5	-	-	-	-	-	-	1,200	1.3	54	1,200	1.3	54
Indomitable Camp	0.5	-	-	-	800	0.9	23	7,300	0.9	265	8,100	0.9	288
Bull Oak	0.5	-	-	-	-	-	-	2,500	1.1	90	2,500	1.1	90
Ladybird	0.5	-	-	-	-	-	-	100	1.9	8	100	1.9	8
Total – Sandstone		-	-	-	4,300	1.6	227	19,200	1.3	819	23,500	1.4	1,046
Total – BTR (Attributable)		1,328	2.0	85	17,592	1.7	948	42,974	1.4	1,973	61,406	1.5	2,990

Refer MRE Note below. Note some rounding discrepancies may occur.

Pericles, Lady Shenton & Stirling consolidated into Lady Shenton System.

Warrior, Lady Harriet & Bellenger consolidated into Lady Harriet System.

Note 1: Julias is located on M57/427, which is owned 75% by Brightstar and 25% by Estuary Resources Pty Ltd

Note 2: Attributable gold ounces to Brightstar include 75% of resources of Julias as referenced in Note 1

Competent Person Statement – Mineral Resource Estimates

This Announcement contains references to Brightstar's JORC Mineral Resource estimates, extracted from the ASX announcements titled "Cork Tree Well Resource Upgrade Delivers 1Moz Group MRE" dated 23 June 2023, "Maiden Link Zone Mineral Resource" dated 15 November 2023, "Aspacia deposit records maiden Mineral Resource at the Menzies Gold Project" dated 17 April 2024, "Brightstar Makes Recommended Bid for Linden Gold", dated 25 March 2024, "Brightstar to drive consolidation of Sandstone Gold District" dated 1 August 2024 and "Scheme Booklet Registered by ASIC" dated 14 October 2024 and "Robust Mineral Resource Upgrades at Laverton and Menzies Underpins Future Mining Operations" dated 19 May 2025.

Brightstar confirms that it is not aware of any new information or data that materially affects the information included in the original market announcements and that all material assumptions and technical parameters underpinning the Mineral Resource estimates in the relevant market announcements continue to apply and have not materially changed. The Company confirms that the form and context in which the Competent Person's findings are presented have not been materially modified from the original market announcements.

Production Targets and Forecast Financial Information

The production targets and forecast financial information disclosed in this announcement were disclosed in accordance with ASX Listing Rule 5.16 in Brightstar's announcement ASX announcement 'Menzies and Laverton Gold Projects Feasibility Study' dated 30 June 2025. Brightstar confirms that all the material assumptions underpinning the production target and forecast financial information in that announcement continue to apply and have not materially changed.

Competent Person Statement – Exploration

The information presented here relating to exploration of the Laverton Gold Project area is based on information compiled by Mr Michael Kammermann, MAIG. Mr Kammermann is a Member of the Australasian Institute of Geoscientists (AIG) and has sufficient experience relevant to the style of mineralisation and type of deposit under consideration and to the activity he is undertaking to qualify as a "Competent Person" as that term is defined in the 2012 Edition of the "Australasian Code of Reporting of Exploration Results, Mineral Resources and Ore Reserves (JORC Code 2012)". Mr Kammermann is a fulltime employee of the Company in the position of Exploration Manager and has provided written consent approving the inclusion of the Exploration Results in the form and context in which they appear.

Compliance Statement

With reference to previously reported Exploration Results and Mineral Resources, the Company confirms that it is not aware of any new information or data that materially affects the information included in the original market announcement and, in the case of estimates of Mineral Resources that all material assumptions and technical parameters underpinning the estimates in the relevant market announcement continue to apply and have not materially changed. The company confirms that the form and context in which the Competent Person's findings are presented have not been materially modified from the original market announcement.