



ASX ANNOUNCEMENT

23 October 2025

Laterite Ore Reserve Statement - Iguana Deposit

Project pre-tax free cash flow estimated at A\$96.2 million (undiscounted)

HIGHLIGHTS

On a 100% basis Beacon Minerals Lady Ida Project - Iguana Laterite Deposit only:

- An Ore Reserve Estimate which constitutes 100% of the ounces in the production target in the Pre-Feasibility study stands at 972k tonnes (63% proved and 37% probable) at 0.94 g/t Au for 29,400 ounces (68% proved and 32% probable)

Deposit	Cut-Off Grade	Ore Reserve Category	Tonnes (kt)	Grade (g/t Au)	Ounces (koz Au)
Iguana Deposit – Laterite	0.53 g/t	Proved	608	1.02	19.9
		Probable	364	0.81	9.5
		Total	972	0.94	29.4

*Rounding errors may occur

- Project pre-tax free cash flow estimated at A\$52.4 million (undiscounted) at a flat A\$4,500 per ounce over a period of 12 months
- Mine life of 12 months and processing life of 12 months at an average AISC of A\$2,341
- Project pre-tax free cash flow estimated at A\$96.2 million (undiscounted) at a spot gold price (22 October 2025) at A\$6,350 per ounce over a period of 12 months
- Establishment capital for these laterites is estimated at A\$2.0 million which includes site infrastructure and haul roads.
- Pre-Feasibility study is modelled as ore being hauled 43 kilometres by road to the Jaurdi process plant
- The Laterite Mineral Resource Estimate totals 1.2 million tonnes @ 0.92 g/t Au for 36,000 ounces

Deposit	Cut-Off Grade	Mineral Resource Category	Tonnes (kt)	Grade (g/t Au)	Ounces (koz Au)
Iguana Deposit – Laterite	0.5 g/t	Measured	666	1.04	22
		Indicated	411	0.82	11
		Inferred	142	0.62	3
		Total	1,219	0.92	36

*Rounding errors may occur. See ASX release dated 5 August 2025 entitled "Updated Laterite Mineral Resource for Iguana Deposit".

- A Mineral Resource to Ore Reserve conversion ratio of 82%

For personal use only

Beacon Minerals Executive Chairman and Managing Director Graham McGarry commented:

“We are very excited with the outcome of this Pre-Feasibility study which has an accuracy of +/- 15%.

“We now look forward to an updated Iguana Mineral Resource Estimate due in late November 2025.

“This will be followed by an Updated Ore Resource and LOM schedule in late January 2026. Beacon’s strategy in building Iguana’s resource and reserve continues with three drill rigs currently on site.”

Cautionary Statement

The Ore Reserve Statement referred to in this announcement is based on Proven and Probable Ore Reserves derived from Measured and Indicated Mineral Resources. No inferred Resource material has been included in the estimation of Ore Reserves. The Company advises that Proven and Probable Ore Reserves provide 100% of the total tonnage and 100% of the total gold metal underpinning the forecast production target and financial projections. There is no additional life-of-mine plan material derived from the non-Ore Reserve material. There is no dependence of the outcomes of the Ore Reserve Study and the guidance provided in this announcement on the non-Ore Reserve material. No Inferred Mineral Resource material is included in the life of mine plan (refer to Appendix 1 and Forward Looking and Cautionary Statements on pages 13 -17).

Beacon has concluded it has reasonable basis for providing the forward-looking statements included in this announcement (see pages 13 – 14). The detailed reasons for that conclusion are outlined throughout this announcement and Material Assumptions are disclosed in Appendix 1. This announcement has been prepared in accordance with the JORC Code.

COMPETENT PERSONS STATEMENT

The information in this announcement that relates to production targets, assumptions on Modifying Factors and evaluation of other relevant factors is based on, and fairly represents information and supporting documentation that has been compiled by Mr Gary McCrae, a Competent Person who is a Member of the Australasian Institute of Mining and Metallurgy (AusIMM). Mr McCrae an employee of Minecomp Pty Ltd has reviewed and approved the technical content of this announcement. Mr McCrae has sufficient experience that is relevant to the style of mineralisation and type of deposit under consideration and to the activity being undertaken to qualify as a Competent Person as defined in the 2012 Edition of the ‘Australasian Code for Reporting of Mineral Resources and Ore Reserves’ (the JORC Code). Mr McCrae consents to the inclusion in the report of the matters based on his information in the form and context in which it appears.

The Mineral Resources underpinning the production target disclosed in this announcement have been prepared by Competent Persons in accordance with the 2012 Edition of the ‘Australasian Code for Reporting of Mineral Resources and Ore Reserves’ (JORC Code). For further details regarding the Mineral Resources underpinning the production target refer to the Company’s ASX announcement dated 05 August 2025.

For personal use only

Beacon Minerals Limited (**ASX: BCN**) (“Beacon” or “the Company”) is pleased to announce the Laterite Ore Reserve Statement at the Lady Ida – Iguana Deposit.

Iguana Deposit Overview

The Iguana deposit is a part of the Lady Ida Project, which sits on the inferred extension of the Ida Fault and is a part of the north-south striking Mount Ida Greenstone Belt. It is predominantly metamorphosed (upper greenschist-amphibolite facies) mafic and ultramafic rocks. The complex structural history provides the space for mineralisation deposition. The mineralisation is controlled by structural and hydrothermal alteration.

On the deposit scale the depth of weathering increases significantly within shear zones and reaches depths of 90 m in the centre of the deposit. Supergene gold enrichment is apparent from grade control drilling in the upper portion of the existing Jamaican Rock pit (mined by Delta Gold in 2000) where significantly higher grades were mined compared to the current resource model.

Recent Diamond Drilling has indicated two distinct “In situ” mineralisation styles within the Iguana deposit.

- Early Stage mineralisation
 - Dominant mineralisation style of the Iguana deposit
 - Sulphide-rich gold mineralisation
 - Quartz is notably absent
- Later Stage mineralisation
 - Quartz-fuchsite mineralisation style locally includes coarse visible gold
 - Relatively small percentage of Iguana’s mineralisation

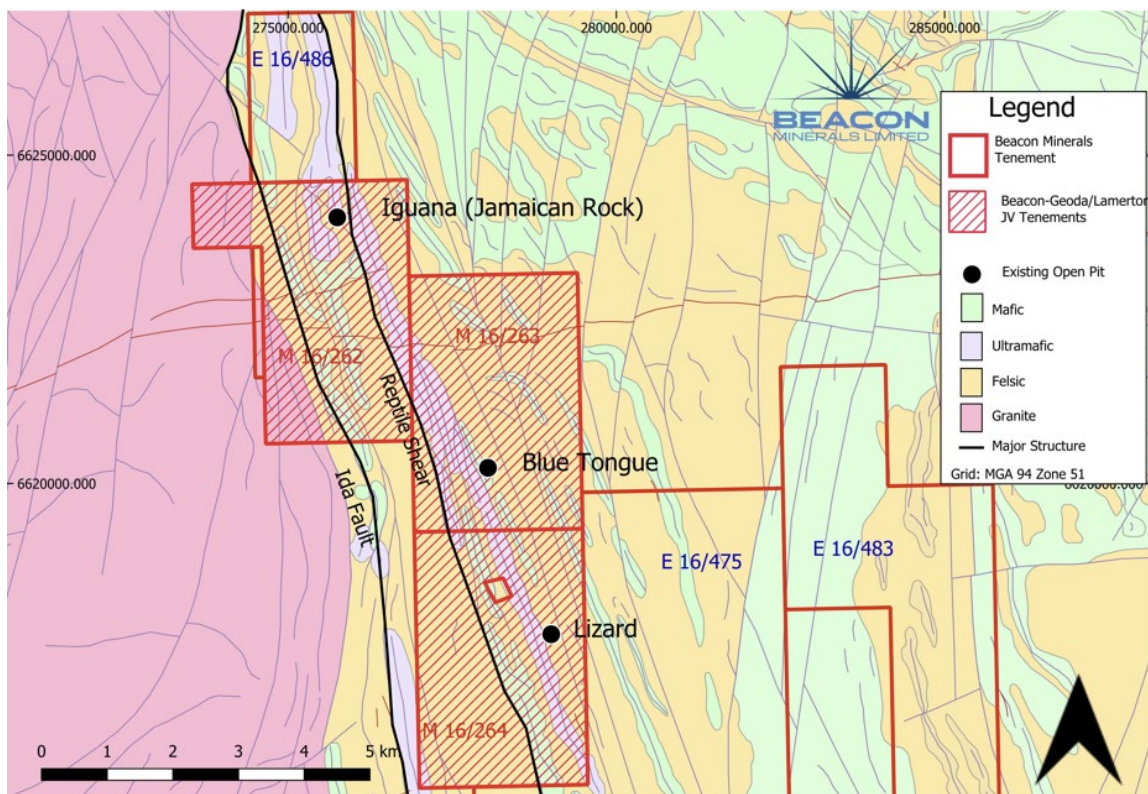


Figure 1: Iguana Local Geology and Tenements

For personal use only

Iguana Deposit Laterite Ore Reserve Estimate

The classification of Ore Reserve has been carried out in accordance with the recommendations of the JORC Code 2012. It is based on the density of drilling, estimation methodology and the mining method to be employed.

All Proved and Probable Ore Reserves have been derived from Measured and Indicated Mineral Resources.

The Ore Reserve was estimated based on extraction using owner operated conventional, open pit mining equipment and off-site milling at the Jaurdi CIP processing plant. Modifying factors for mining dilution and mining recovery have been applied. Contemporary in-house mining, processing and site costs have been utilised.

The Pre-Feasibility Study was conducted as of September 2025. The Study, prepared with an accuracy of +/- 15%, considered all relevant mining modifying factors, allowing an Ore Reserve to be estimated in accordance with the JORC Code. Classification of the estimate is shown in Table 1.

Deposit	Cut-Off Grade	Ore Reserve Category	Tonnes (kt)	Grade (g/t Au)	Ounces (koz Au)
Iguana Deposit – Laterite	0.53 g/t	Proved	608	1.02	19.9
		Probable	364	0.81	9.5
		Total	972	0.94	29.4

*Rounding errors may occur

Iguana Laterite Pre-Feasibility Study

The Pre-Feasibility Study was undertaken independently by Minecomp and is based on the following material modifying factors:

- Ore Reserves are situated on an approved mining tenement
- Key mining approvals have been granted
- Pit design gold price of A\$4,500/oz
- The Jaurdi processing facility utilizes conventional CIP methods
- The Jaurdi processing facility is located 43 kilometres by road
- An average metallurgical recovery of 82.5% has been applied
- The mining fleet was assumed to be owner operated and comprised of dozer rip and push, 90t haul trucks, 120t class excavator and matching ancillary equipment
- Mining dilution of 5% at 0.00g/t was applied to laterite ore
- Mining recovery of 95%
- No minimum mining widths were utilised
- Ore Reserve cut-off grade was 0.53 g/t gold (undiluted)
- Inferred Resources were assumed to be waste material
- Project implementation and management by Beacon's own team in conjunction with contractors

The key study outcomes for the Iguana Laterite Project are included in Table 2 below. The estimated Ore Reserve, which constitutes 95% of the production target, has been prepared by competent persons in accordance with JORC Code 2012.

Summary of Key Study Outcomes

Parameter	Unit	September 2025 Pre-Feasibility Study
General		
Start Date	Months	November 2025
Project Life (mining)	Months	12
Project Life (milling)	Months	12
Mining		
Ore Tonnes	t	972,000
Waste bcm	bcm	573,000
Strip Ratio	waste : ore	1.3 : 1
Grade	g/t	0.94
Contained Gold	oz Au	29,400
Processing		
Ore Processed	t	972,000
Grade	g/t	0.94
Average Recovery	%	82.5
Gold Production	oz Au	24,279
Financial		
Gold Price Assumption	A\$/oz	4,500
Upfront Project Capital Cost	A\$	\$2.0 million
AISC	A\$/oz	2,341

Table 1: Summary of Key Study Outcomes

For personal use only

Tenure

The Lady Ida Project consists of M16/262 (the Iguana Deposit is located on M16/262), M16/263, M16/264, EL15/224, L16/58, L16/62, L16/103, L16/142 and application L16/138. which is the ground the subject of the Earn-In, JV and Tenement Transfer Agreement between the Company, Beacon Mining Pty Ltd, Lamerton Pty Ltd and Geoda Pty Ltd.

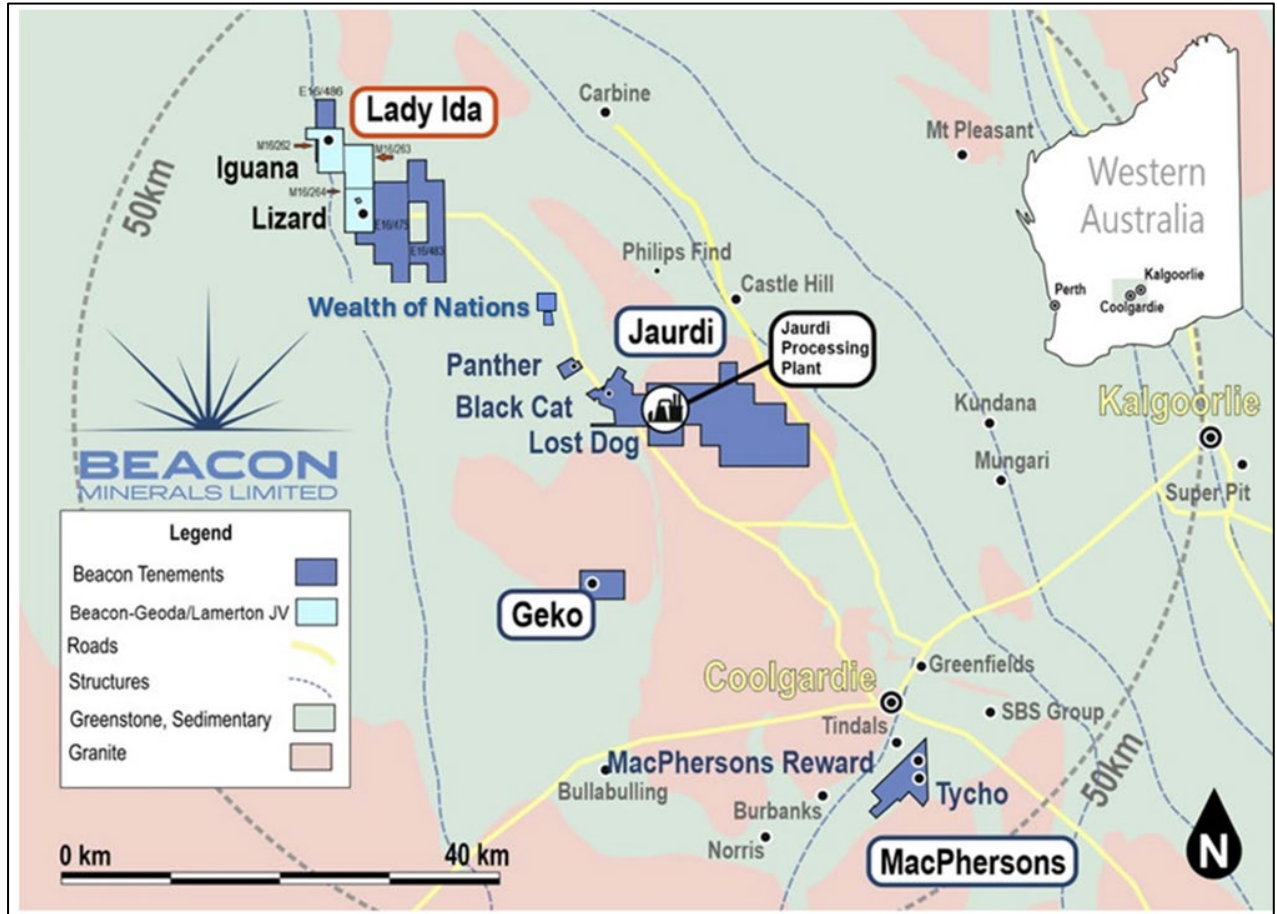


Figure 2: Location of the Lady Ida Project (Iguana Deposit)

For personal use only

Joint Venture

The Lady Ida Project consist of M16/262 (the Iguana Deposit is located on M16/262), M16/263, M16/264, L15/224, L16/58, L16/62, L16/103, L16/142 and application L16/138 which is the ground the subject of the Earn-In, JV and Tenement Transfer Agreement between the Company, Beacon Mining Pty Ltd, Lamerton Pty Ltd and Geoda Pty Ltd.

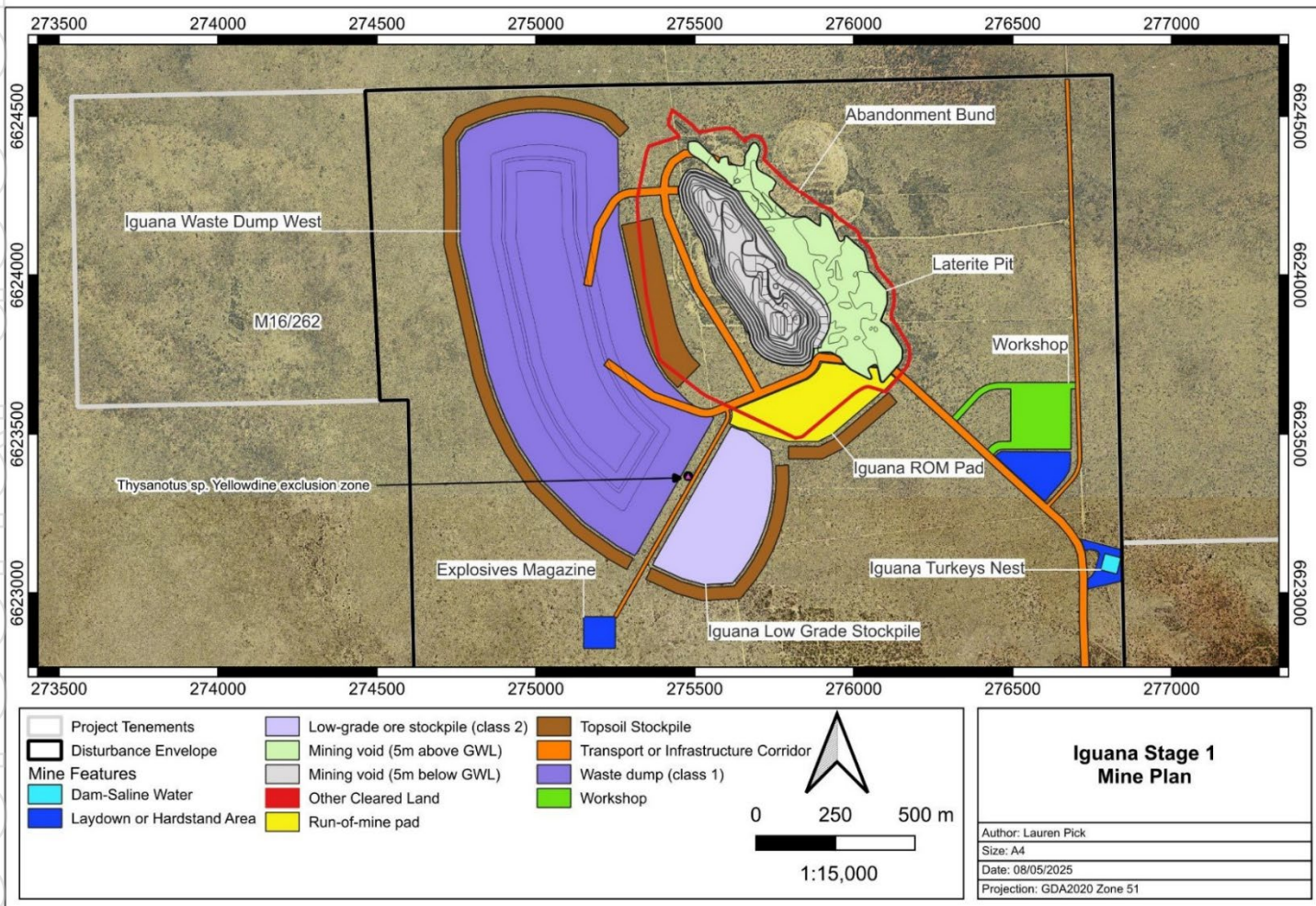


Figure 3: Infrastructure of the Lady Ida Project (Iguana Deposit)

Lateritic Mineralisation

The Lateritic material occurs in bands of Iron Pisolites located near surface in the heavily oxidised unit. This mineralisation style provides relatively distinct beds of gold mineralisation which has been weathered from the primary in-situ material. Successful mining of Laterite material at Iguana is well recorded by prior owners.

Drilling was conducted in two stages due to the unknown extent of the Laterite mineralisation east of the known Iguana Mineralised Zone. Both drill programs have confirmed this mineralisation is extensive, with further potential along strike and yet to be tested.

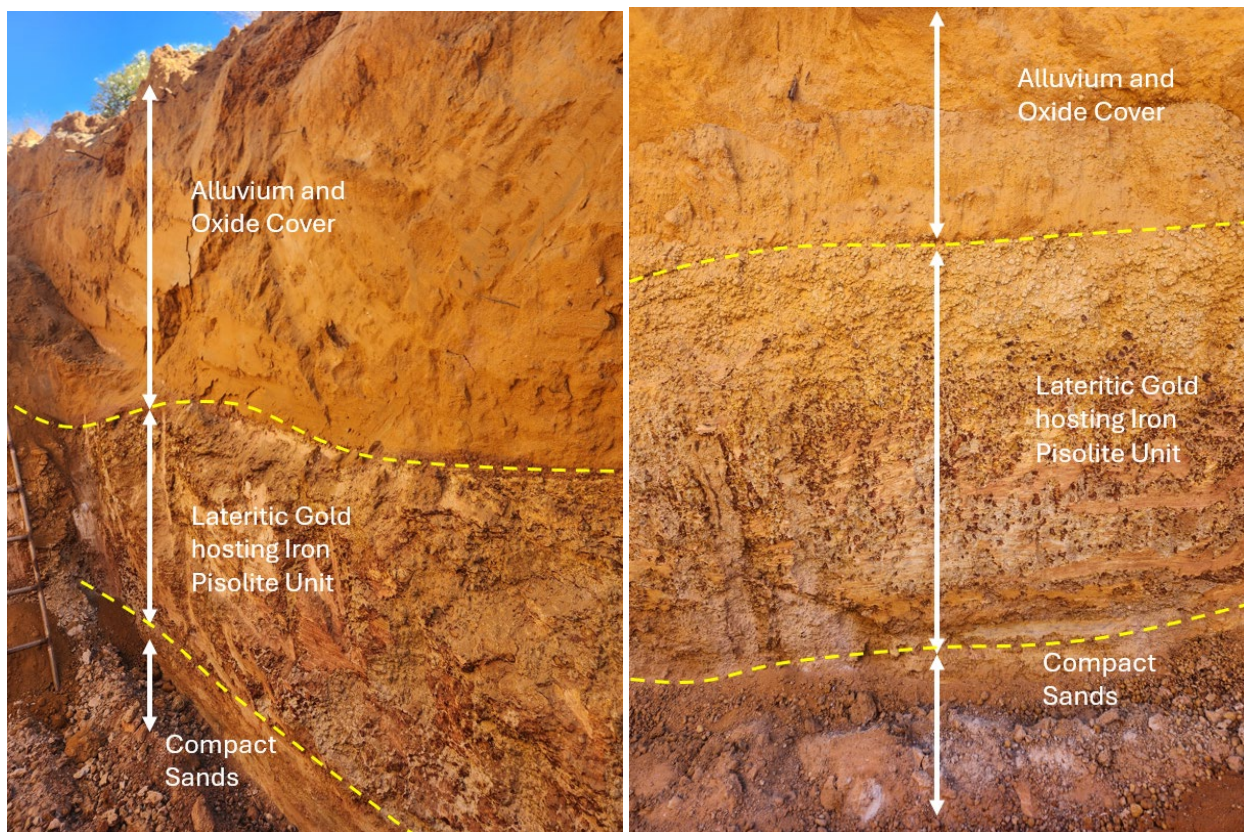


Figure 4: Exposed Laterite Cross Sections annotated with material type

This photo is provided as a visual representation of the geological setting and style of mineralisation being targeted within the tenement. No visible mineralisation is reported in this image, and the photo does not represent any grade or resource estimate.

For personal use only

Iguana Deposit Laterite Mineral Resource Estimate

The financial model developed for the owner operated mining and ore processing of the Iguana Laterites demonstrates that at a gold price of A\$4,500/oz:

Gold AUD \$/oz	Generated Revenue \$M	Operating Costs \$M	Capital Costs \$M	Total Royalties \$M	Undiscounted Cashflow \$M	All in Cost per Ounce A\$/oz
4,500	109.3	52.1	2.0	2.7	52.4	2,341

*Rounding errors may occur

Table 3: Summary of Key Study Outcomes

The financial model developed for the owner operated mining and ore processing of the Iguana Laterites demonstrates that at spot gold price (22 October 2025) of A\$6,350/oz:

Gold AUD \$/oz	Generated Revenue \$M	Operating Costs \$M	Capital Costs \$M	Total Royalties \$M	Undiscounted Cashflow \$M	All in Cost per Ounce A\$/oz
6,350	154.2	52.1	2.0	3.9	96.2	2,387

*Rounding errors may occur

Table 4: Spot Gold Price Summary of Key Study Outcomes

Sensitivity analysis was completed to assess the impact on the project with varying gold prices:

Gold AUD \$/oz	Generated Revenue \$M	Operating Costs \$M	Capital Costs \$M	Total Royalties \$M	Undiscounted Cashflow \$M	All in Cost per Ounce A\$/oz
4,500	109.3	52.1	2.0	2.7	52.4	2,341
5,000	121.4	52.1	2.0	3.0	64.3	2,353
5,500	133.5	52.1	2.0	3.3	76.1	2,366
6,000	145.7	52.1	2.0	3.6	87.9	2,378
6,350	154.2	52.1	2.0	3.9	96.2	2,387
6,500	157.8	52.1	2.0	3.9	99.8	2,391
7,000	170.0	52.1	2.0	4.2	111.6	2,403
7,500	182.1	52.1	2.0	4.6	123.4	2,416
8,000	194.2	52.1	2.0	4.9	135.3	2,428

*Rounding errors may occur

Table 5: Gold Price Sensitivity Summary of Key Study Outcomes

Iguana Deposit Laterite Mineral Resource Estimate

An updated Mineral Resource estimate was released in August 2025. For details of the Mineral Resource estimate, readers are referred to the 5 August 2025 ASX announcement entitled “Updated Laterite Mineral Resource for Iguana Deposit”. A summary of the Mineral Resource is provided in Table 6 and details of the Mineral Resource inside the Iguana laterite pit are presented in Table 7.

Deposit	Cut-Off Grade	Mineral Resource Category	Tonnes (kt)	Grade (g/t Au)	Ounces (koz Au)
Iguana Deposit – Laterite	0.5 g/t	Measured	666	1.04	22
		Indicated	411	0.82	11
		Inferred	142	0.62	3
		Total	1,219	0.92	36

*Rounding errors may occur. See ASX release dated 5 August 2025 entitled “Updated Laterite Mineral Resource for Iguana Deposit”.

Table 6: Iguana Laterite Mineral Resource Estimate

Deposit	Cut-Off Grade	Mineral Resource Category	Tonnes (kt)	Grade (g/t Au)	Ounces (koz Au)
Iguana Deposit – Laterite	0.5 g/t	Measured & Indicated	972	0.94	29.4
		Inferred	77	0.63	1.6
		Total	1,049	0.92	31

*Rounding errors may occur

Table 7: Iguana Laterite Mineral Resource Estimate (contained in Iguana Laterite Pit)

Mineral Resource Cut-off Grade

The Mineral Resource cut-off grade for reporting of the laterite resource at the Iguana deposit was 0.5 g/t Au. This was based on consideration of grade-tonnage data (Figure 5) and on feedback from Beacon personnel on the planned mining cut-off grade. Tonnages were estimated on a dry basis.

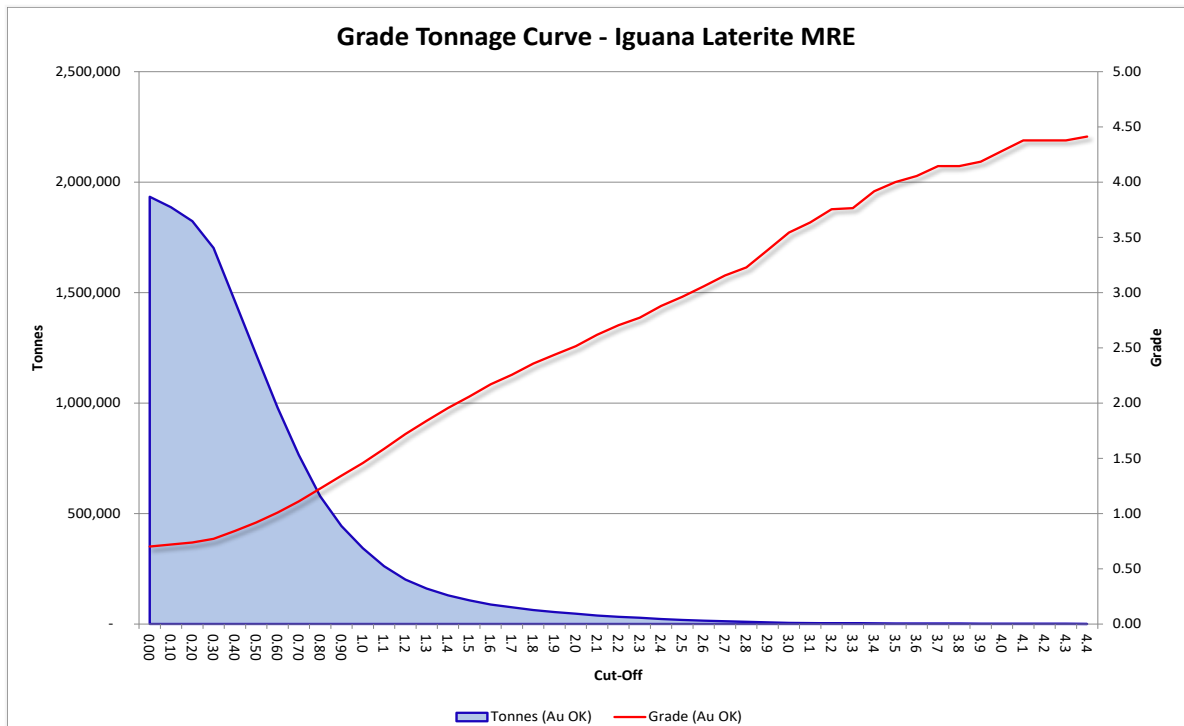


Figure 5: Grade-tonnage curve for Iguana Laterite – Classified Mineral Resources

Iguana Laterite February 2025 Ore Reserve Estimate

Beacon announced on the 24 February 2025 the Pre-Feasibility Study for the Iguana Deposit on a 100% basis. Beacon engaged external consultants Minecomp Pty Ltd to undertake the Study for the Iguana Deposit which forms part of the Lady Ida Project. The laterite proportion consisted of:

Deposit	Cut-Off Grade	Ore Reserve Category	Tonnes (kt)	Grade (g/t Au)	Ounces (koz Au)
Iguana Deposit – Laterite	0.55 g/t	Proved	180	1.56	9.1
		Probable			
		Total	180	1.56	9.1

*Rounding errors may occur

Table 8: Iguana Laterite February 2025 Ore Reserve

About the Lady Ida Project

The Lady Ida Project consist of M16/262 (the Iguana Deposit is located on M16/262), M16/263, M16/264, L15/224, L16/58, L16/62, L16/103, L16/142 and application L16/138 which is the ground the subject of the Earn-In, JV and Tenement Transfer Agreement between the Company, Beacon Mining Pty Ltd, Lamerton Pty Ltd and Geoda Pty Ltd.

For further details in relation to the Earn-In, JV and Tenement Transfer Agreement for the Lady Ida Project refer to ASX releases dated 6 December 2023 entitled “Beacon to Acquire an interest in the Lady Ida Gold Project” and 4 September 2024 “Lady Ida Completes and Appointment of New Director”.

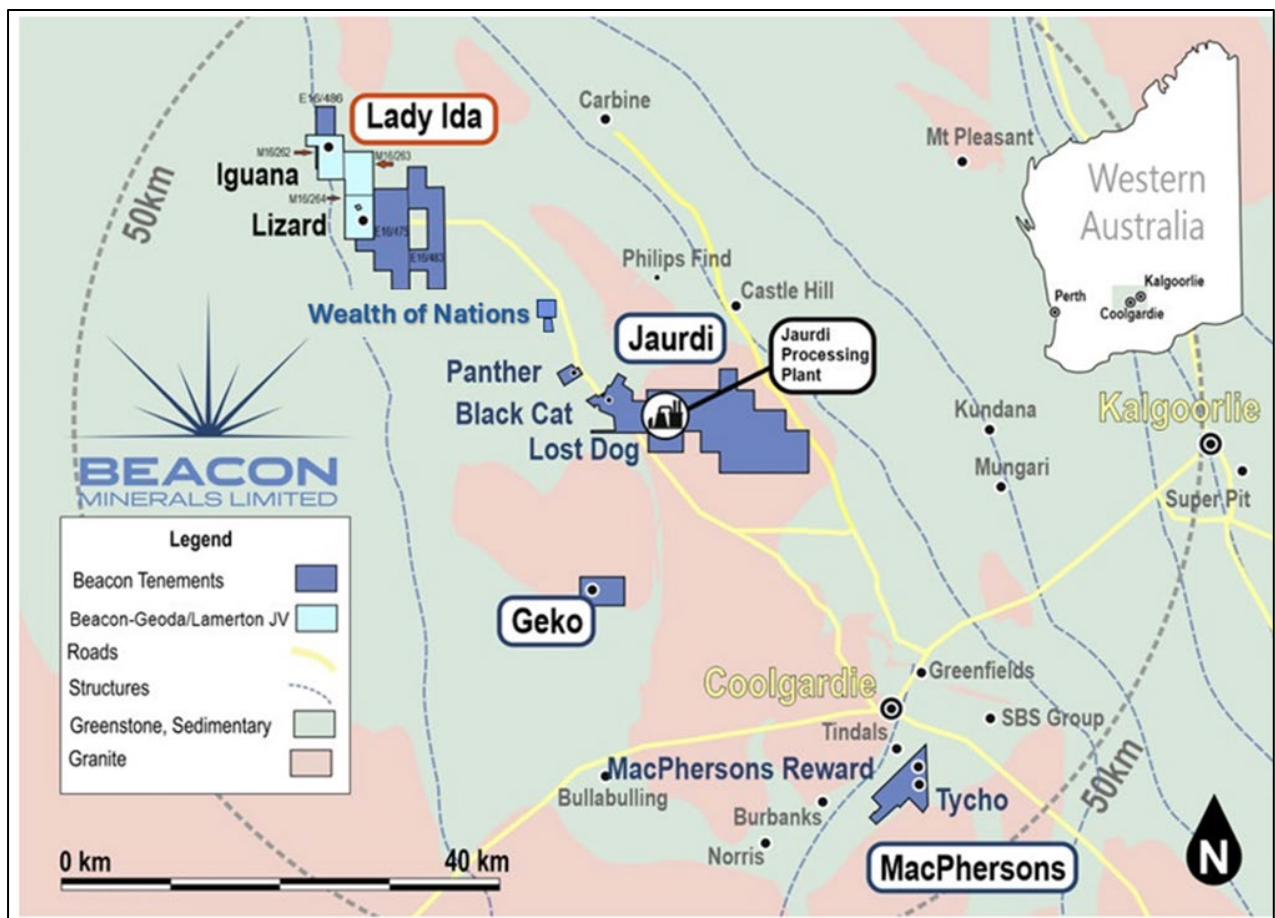


Figure 6: Location of the Lady Ida Project (Iguana Deposit)

Authorised for release by the Board of Beacon Minerals Limited.

For more information contact:

Graham McGarry
Managing Director/Chairman
Beacon Minerals Ltd
M: 0459 240 379

Geoffrey Greenhill
Non-Executive Director
Beacon Minerals Ltd
M: 0419 991 713

For personal use only

Competent Person's Statement

The Information in this Report that relates to Pre-Feasibility Study and Ore Reserve is based on information compiled by Mr Gary McCrae, a Competent Person who is a Member of the Australasian Institute of Mining and Metallurgy. Mr McCrae is a full-time employee of Minecomp Pty Ltd.

Mr McCrae has sufficient experience that is relevant to the style of mineralisation and type of deposit under consideration and to the activity being undertaken to qualify as a Competent Person as defined in the 2012 Edition of the "Australasian Code for Reporting of Exploration Results, Mineral Resources and Ore Reserves". Mr McCrae consents to the inclusion in the report of the matters based on his information in the form and context in which it appears.

Previous Disclosure

The information in this release that relates to Mineral Resource Estimates is based on information previously disclosed by the Company. These ASX Announcements are available on the Company's website (www.beaconminerals.com.au) and the ASX website (www.asx.com.au) under the Company's ticker code "BCN". The Company confirms that it is not aware of any new information or data as at the date of this release that materially affects the information included in this release and that all material assumptions and technical parameters underpinning the estimates continue to apply and have not materially changed.

Forward looking statements

This ASX announcement (Announcement) has been prepared by Beacon Minerals Limited ("Beacon" or "the Company"). It should not be considered as an offer or invitation to subscribe for or purchase any securities in the Company or as an inducement to make an offer or invitation with respect to those securities. No agreement to subscribe for securities in the Company will be entered into on the basis of this Announcement.

This Announcement contains summary information about Beacon, its subsidiaries and their activities which is current as at the date of this Announcement. The information in this Announcement is of a general nature and does not purport to be complete nor does it contain all the information which a prospective investor may require in evaluating a possible investment in Beacon.

By its very nature exploration for minerals is a high-risk business and is not suitable for certain investors. Beacon's securities are speculative. Potential investors should consult their stockbroker or financial advisor. There are a number of risks, both specific to Beacon and of a general nature which may affect the future operating and financial performance of Beacon and the value of an investment in Beacon including but not limited to economic conditions, stock market fluctuations, gold price movements, regional infrastructure constraints, timing of approvals from relevant authorities, regulatory risks, operational risks, and reliance on key personnel.

Certain statements contained in this announcement, including information as to the future financial or operating performance of Beacon and its projects, are forward-looking statements that:

may include, among other things, statements regarding targets, estimates and assumptions in respect of ore reserves and mineral resources and anticipated grades and recovery rates, production and prices, recovery costs and results, capital expenditures, and are or may be based on assumptions and estimates related to future technical, economic, market, political, social, and other conditions.

are necessarily based upon a number of estimates and assumptions that, while considered reasonable by Beacon, are inherently subject to significant technical, business, economic, competitive, political, and social uncertainties and contingencies; and,

involve known and unknown risks and uncertainties that could cause actual events or results to differ materially from estimated or anticipated events or results reflected in such forward-looking statements.

Beacon disclaims any intent or obligation to update publicly any forward-looking statements, whether as a result of new information, future events, or results or otherwise. The words 'believe', 'expect', 'anticipate', 'indicate', 'contemplate', 'target', 'plan', 'intends', 'continue', 'budget', 'estimate', 'may', 'will', 'schedule' and similar expressions identify forward-looking statements.

All forward looking statements made in this announcement are qualified by the foregoing cautionary statements. Investors are cautioned that forward-looking statements are not guarantees of future performance and accordingly investors are cautioned not to put undue reliance on forward-looking statements due to the inherent uncertainty therein.

The Company believes that it has a reasonable basis for making the forward-looking statements in this announcement, including with respect to any production targets and financial estimates, based on the information contained in this and previous ASX announcements.

No verification: Although all reasonable care has been undertaken to ensure that the facts and opinions given in this Announcement are accurate, the information provided in this Announcement has not been independently verified.

For personal use only

APPENDIX 1: LISTING RULE 5.9 DISCLOSURES

Lady Ida – Iguana Pit - Laterites

The Pre-Feasibility Study was completed with the following material assumptions made:

Material Assumptions and Outcomes

The Ore Reserve was estimated based upon extraction using owner operated conventional, open pit mining and off-site milling at the Jaurdi CIP processing plant. Modifying factors for mining dilution and mining recovery have been applied. Contemporary in-house mining, processing and site costs have been utilised.

State gold royalty of 2.5% and private royalties were applied as per the royalty agreements (Royalties).

All the operating cost (Operating Expenditure and Royalties) amounted to an estimated \$54.8 million.

All the capital cost (Upfront Project & Sustaining capital) amounted to an estimated \$2.0 million.

Gold price revenue assumptions were based on A\$4,500/oz, a discount to current spot prices, and considered appropriate.

Financial modelling activities were undertaken jointly by Beacon's senior site people and Minecomp and quoted as a modifying factor in support of the Ore Reserve estimate. The model was jointly agreed with Minecomp as the undiscounted cash flow model for the Iguana Pit Reserve of 972,000t.

In summary Minecomp is satisfied, that the level of work (including the project financial model), can be considered appropriate, to support the quotation of the Ore Reserve estimate.

Criteria for Classification

Minecomp has reviewed the modelling methodology and Mineral Resource estimate that was applied by Entech Pty Ltd to the block models developed in August 2025. In general, Minecomp considers the processes to determine the Mineral Resource are adequate for reporting of Mineral Resources.

Measured Mineral Resources have been converted to Proven Ore Reserves. Indicated Mineral Resources have been converted to Probable Ore Reserves. The Ore Reserves consist of 63% Proved Reserves and 37% Probable Reserves.

The Competent Person is satisfied that the stated Ore Reserve classification reflects the outcome of technical and economic studies. The confidence in the Ore Reserve is reflected by the classifications shown above. In general, at the project's geology is well understood and confidence in the Mineral Resource interpretation is good.

The Project has an established open pit mine that last operated in 2000. The previous mining extraction and confirmed processing recovery from that operation substantially de-risk the reestablishment of mining activities at the Project.

For personal use only

Mining Method and Assumptions

The mining method is conventional open pit mining including dozer rip and push, mining fleet was assumed to be owner operated and comprised of 90t haul trucks, 120t class excavator. Typical ancillary fleet comprising water trucks, dozers and graders shall also be utilised.

Mining recovery factors and dilution factors were built in through a regularised block model. Mining dilution of 10% at 0.00g/t was applied to laterite and oxide ore and 15% @ 0.00g/t to transitional and fresh ores. Mining recovery was applied at 95%. This factor was based upon the proposed fleet size and geological geometry.

Processing Method and Assumptions

Ore mined will be hauled from the Iguana run of mine (ROM) pad and delivered to the Jaurdi processing plant ROM pad where it will be crushed screened and fed into the plant. Ore will be processed at approximately 80kt per month over a 12-month period.

The metallurgical recovery used for the estimation of the Ore Reserve was 82.5%. This figure was based upon the recoveries achieved during recent processing of Iguana low grade laterite ore stocks at Jaurdi and historical processing at the FMR Greenfields treatment plant. Both achieved metallurgical recoveries in excess of 92%. No deleterious elements have been identified through the testwork or previous treatment campaigns.

Cut-off grades or quality parameters

The cut-off grade for estimation of Ore Reserves is greater than or equal to 0.53g/t gold, reported as an open pit.

Metallurgical estimates were applied to the model to produce grades and yields. Dilution and mining recovery were modelled and applied to the model.

Pit optimisations with industry standard software were undertaken. This optimisation utilized the Mineral Resource model together with cost, revenue, and geotechnical inputs.

Estimation Methodology

The resultant pit shells were used to develop detailed pit designs with due consideration of geotechnical, geometric, and access constraints. These pit designs were used as the basis for production scheduling and economic evaluation. Conventional mining methods (90t truck and 120t excavator) were selected. The geotechnical parameters have been applied based on geotechnical studies.

Inferred Mineral Resources were excluded from mine schedules and economic valuations utilized to validate the economic viability of the Ore Reserves.

Modelling considered the infrastructure requirements associated with the conventional truck and excavator mining operation including maintenance facilities, access routes, explosive storage, water, power and transport facilities.

For personal use only

Material Modifying parameters

The Iguana project is accessed via an existing, 43 kilometres, unsealed site access road. Mining shall be undertaken under the Mining Act 1978 on granted mining lease M16/262.

Site establishment and minor site road upgrades will be undertaken by Beacon, inclusive of offices, hard-stand area and a workshop facility. Due to the proximity of Kalgoorlie/Boulder, all external providers and staff shall come from the nearby city, with FIFO personnel supporting the operation.

Appendix 3: JORC Tables

Section 1: Sampling Techniques and Data

CRITERIA	JORC CODE EXPLANATION	COMMENTARY
<p>Sampling techniques</p>	<p><i>Nature and quality of sampling (e.g. cut channels, random chips, or specific specialised industry standard measurement tools appropriate to the minerals under investigation, such as down hole gamma sondes, or handheld XRF instruments, etc.). These examples should not be taken as limiting the broad meaning of sampling.</i></p> <p><i>Include reference to measures taken to ensure sample representativity and the appropriate calibration of any measurement tools or systems used.</i></p> <p><i>Aspects of the determination of mineralisation that are Material to the Public Report. In cases where ‘industry standard’ work has been done this would be relatively simple (e.g. ‘reverse circulation drilling was used to obtain 1 m samples from which 3 kg was pulverised to produce a 30 g charge for fire assay’). In other cases more explanation may be required, such as where there is coarse gold that has inherent sampling problems. Unusual commodities or mineralisation types (e.g. submarine nodules) may warrant disclosure of detailed information.</i></p>	<p>Aberfoyle:</p> <ul style="list-style-type: none"> Reverse circulation (RC), rotary air blast (RAB) and aircore (AC) drilling with 1 m sampling from cyclone (BDRB prefix holes RAB drilling with 2 m sampling). Samples sent to accredited laboratories for drying, crushing and pulverising. Composite samples assayed by aqua regia/atomic absorption spectroscopy (AAS) (except in areas of elevated graphite – fire assay (FA) and those returning greater than 0.2–0.3 g/t were re-assayed as individual metres by FA to ALS Kalgoorlie for 50 g charge FA with 0.01 ppm detection limit. HQ triple diamond (DD) drilling was halved, 50 g charge FA with 0.01 ppm detection limit. <p>EGL:</p> <ul style="list-style-type: none"> RC samples collected from the riffle or cone splitter directly off rig into calico bags. Splitter maintained on level site to ensure sample representativity. 1 m samples are dried, crushed, pulverised and a 40 g charge is analysed by FA. <p>Roper River Resources:</p> <ul style="list-style-type: none"> RAB 1 m sampling with blade or hammer. Dried, crushed and pulverised samples analysed by aqua regia/AAS finish with 25 g charge. <p>Monarch:</p> <ul style="list-style-type: none"> AC, RAB and RC drilling on 1 m sampling basis with RAB samples being composited to 4 m for initial analysis by aqua regia/AAS. Individual AC and RC metres collected from cyclone, riffle split and submitted for aqua regia/AAS and FA/AAS respectively. <p>Siberia Mining Corporation (SMC):</p> <ul style="list-style-type: none"> 1 m sampling of AC, RAB and RC drilling composites and individual re-assays dispatched for FA. <p>Perilya:</p>

CRITERIA	JORC CODE EXPLANATION	COMMENTARY
		<ul style="list-style-type: none"> 5 m composite RAB and AC assayed at Analabs Perth by method P649, 50 g aqua regia, DIBK, Carbon Rod. <p>Croesus:</p> <ul style="list-style-type: none"> RC 1 m samples collected under cyclone. RAB drilling on a 1 m basis. 3.5 kg samples were pulverised to make 50 g charge for analysis by FA/inductively coupled plasma-optical spectrometry (ICP-OS). <p>Delta:</p> <ul style="list-style-type: none"> 1 m sampling of AC, RAB and RC. 5 m composites submitted to Genalysis and/or ALS laboratories Kalgoorlie for preparation, followed by aqua regia with 50 g charge with 0.01 ppm detection limit. Composite assays returning values ≥ 0.1 ppm Au, corresponding single metre samples were collected and submitted. <p>Ora Banda Mining Ltd (OBM):</p> <ul style="list-style-type: none"> 1 m RC samples using face sampling hammer with samples collected under cone splitter. 4 m composite RC samples collected using a PVC spear from the sample piles at the drill site. For drilling up to April 2020, RC samples were submitted for pulverising and 50 g charge FA. 4 m composite samples with gold values greater than 0.2 g/t Au were re-sampled as 1 m split samples and submitted to the lab for further analysis. Half-core samples, cut by automated core saw. Core sample intervals selected by geologist and defined by geological boundaries. Samples are crushed, pulverised and a 40 g charge is analysed by FA. A total of 56 holes were drilled by OBM, including three RCDD holes and 53 RC holes. <p>The information presented above is derived from OBM's JORC table for its 2022 Iguana MRE.</p> <p>Beacon Minerals</p> <ul style="list-style-type: none"> 1m RC samples using face hammer with samples collected under cone splitter.

personal use only

CRITERIA	JORC CODE EXPLANATION	COMMENTARY
		<ul style="list-style-type: none"> • 4m composite AC samples collected via scoop on sample piles. 4 m composite samples with gold values greater than 0.2 g/t Au were re-sampled as 1 m split samples and submitted to the lab for further analysis. • DD logged and full hole sampled utilising geology defined sample intervals. Core was halved or quartered depending on use and dispatched to the BV Cunningham facility. • All Assays conducted for Beacon Minerals were performed by BV Cunningham. Samples are crushed, pulverised and a 40 g charge is analysed by FA.
Drilling techniques	<i>Drill type (e.g. core, reverse circulation, open-hole hammer, rotary air blast, auger, Bangka, sonic, etc) and details (e.g. core diameter, triple or standard tube, depth of diamond tails, face-sampling bit or other type, whether core is oriented and if so, by what method, etc).</i>	<p>Aberfoyle:</p> <ul style="list-style-type: none"> • No details for early RAB drilling. Later drilling involved RAB drilling using 4–4.25-inch blade or hammer to blade refusal. • AC using 3.5-inch blade. • RC 5.25–5.5-inch diameter face sampling hammer. <p>Croesus:</p> <ul style="list-style-type: none"> • Undocumented details. Presumably industry standard at the time being 5.5-inch face sampling hammers for RC and 4-inch diameter RAB holes. <p>Delta:</p> <ul style="list-style-type: none"> • RC 5.5-inch face sampling hammers. At times, a stepped AC bit was used to drill through sand at beginning of hole which changed to face-sampling hammer when laterite encountered. • HQ triple twin DD holes at Lizard. LZD1-3 was oriented. <p>EGL:</p> <ul style="list-style-type: none"> • RC 5.25-inch diameter. <p>Roper River Resources:</p> <ul style="list-style-type: none"> • RAB with blade and/or hammer bit. • RC drilling with 5.25-inch diameter face sampling hammer. <p>Monarch:</p> <ul style="list-style-type: none"> • RC drilling 5.5-inch diameter with face sampling hammer.

CRITERIA	JORC CODE EXPLANATION	COMMENTARY
		<ul style="list-style-type: none"> • RAB 4-inch diameter blade with occasional hammer bit usage. • AC details undocumented. <p>SMC:</p> <ul style="list-style-type: none"> • AC, RAB, RC details undocumented. Presumably industry standard at the time being 5.5-inch face sampling hammers for RC and 4-inch diameter RAB holes. <p>OBM:</p> <ul style="list-style-type: none"> • 5.25–5.5-inch diameter RC holes using face sampling hammer with samples collected under cone splitter. HQ and HQ3 coring to approx. 40 m, then NQ2 to bottom of hole. • Metallurgical and geotechnical core holes drilled using HQ3 exclusively. • All core oriented by reflex instrument. <p>The information presented above is derived from OBM's JORC table for its 2022 Iguana MRE.</p> <p>Beacon Minerals:</p> <ul style="list-style-type: none"> • RC drilling conducted by 115mm Hammer face bit. • AC drilling conducted utilising both Blade and Hammer methods, varying in bit size due to ground conditions • DD drilling was conducted in PQ3 or HQ3. Two holes were collared in PQ3 before casing off at approx. 70m depth to HQ3. Remaining holes were drilled HQ3 from collar.
<p>Drill sample recovery</p>	<p><i>Method of recording and assessing core and chip sample recoveries and results assessed.</i></p> <p><i>Measures taken to maximise sample recovery and ensure representative nature of the samples.</i></p> <p><i>Whether a relationship exists between sample recovery and grade and whether sample bias may have occurred due to preferential loss/gain of fine/coarse material.</i></p>	<p>Delta:</p> <ul style="list-style-type: none"> • Recoveries for resource RC drilling made as a subjective estimate. Recoveries in resource drilling were generally in excess of 70% (Iguana laterite), 60% (Lizard). Poor recoveries occurred outside mineralised zones. <p>OBM:</p> <ul style="list-style-type: none"> • DD drill recoveries are recorded as a percentage calculated from measured core against downhole drilled intervals (core blocks).

personal use only

CRITERIA	JORC CODE EXPLANATION	COMMENTARY
		<ul style="list-style-type: none"> RC samples are weighed at the laboratory to monitor recoveries. <p>Other operators have not captured recovery data.</p> <p>There is no known relationship between sample recovery and grade.</p> <p>The information presented above is derived from OBM's JORC table for its 2022 Iguana MRE.</p> <p>Beacon Minerals:</p> <ul style="list-style-type: none"> DD drill recoveries were recorded in logging and sampling processes, with noted core loss existing in upper weathering profiles RC sample had recoveries recorded by percentage of material, significant material loss was present near surface due to unconsolidated sands AC sample had recoveries recorded in percentage, material retention was good to excellent from surface.
<p>Logging</p>	<p><i>Whether core and chip samples have been geologically and geotechnically logged to a level of detail to support appropriate Mineral Resource estimation, mining studies and metallurgical studies.</i></p> <p><i>Whether logging is qualitative or quantitative in nature. Core (or costean, channel, etc.) photography.</i></p> <p><i>The total length and percentage of the relevant intersections logged.</i></p>	<p>Aberfoyle:</p> <ul style="list-style-type: none"> Logging on 1 m basis. Qualitative – lithology, oxidation, grain size. Quantitative – quartz. <p>Croesus:</p> <ul style="list-style-type: none"> Qualitative – lithology, colour, grain size, alteration, oxidation, texture, structures, regolith. Quantitative – estimates are made of quartz veining. <p>Delta:</p> <ul style="list-style-type: none"> Qualitative – lithology, colour, oxidation, structure, texture, alteration. Quantitative – estimates are made of quartz veining and minerals. <p>EGL:</p>

personal use only

CRITERIA	JORC CODE EXPLANATION	COMMENTARY
		<ul style="list-style-type: none"> • Qualitative – alteration, colour, grain size, lithology, oxidation, mineralogy, structure, texture, vein style, vein assemblage, remarks. • Quantitative – mineralisation intensity, vein percent. <p>Roper River Resources:</p> <ul style="list-style-type: none"> • Qualitative – colour, lithology, oxidation, BOCO, texture, alteration, minerals, sulphides. • Quantitative – quartz. <p>Monarch:</p> <ul style="list-style-type: none"> • Qualitative – lithology, colour, oxidation, grain size, texture, structure, hardness, regolith. • Quantitative – estimates are made of quartz veining, sulphide percentages. <p>SMC:</p> <ul style="list-style-type: none"> • Qualitative – lithology, colour, oxidation, alteration. • Quantitative – estimates are made of quartz veining. <p>OBM:</p> <ul style="list-style-type: none"> • Field logging was conducted using Geobank Mobile™ software on Panasonic Toughbook CF-31 ruggedised laptop computers. • Qualitative logging – lithology, colour, oxidation, grain size, texture, structure, hardness, regolith. • Quantitative – estimates are made of quartz veining, sulphide and alteration percentages. Core photographed both wet and dry. • Magnetic susceptibility and rock quality designation (RQD) were also recorded for core holes. <p>All holes were geologically logged in their entirety to a level of detail to support Mineral Resource estimation.</p> <p>The information presented above is derived from OBM's JORC table for its 2022 Iguana MRE.</p> <p>Beacon Minerals:</p>

personal use only

CRITERIA	JORC CODE EXPLANATION	COMMENTARY
		<ul style="list-style-type: none"> • Diamond Drilling- Logging was completed by competent contractors utilising Beacon logging template. Sampling was then conducted off the logging intervals. • Reverse Circulation/ Air Core- Logging was conducted using chip samples, prepared by conducting both dry and wet sieves. Logging was done in accordance with the Beacon Logging code.
<p>Subsampling techniques and sample preparation</p>	<p><i>If core, whether cut or sawn and whether quarter, half or all core taken.</i></p> <p><i>If non-core, whether riffled, tube sampled, rotary split, etc and whether sampled wet or dry.</i></p> <p><i>For all sample types, the nature, quality and appropriateness of the sample preparation technique.</i></p> <p><i>Quality control procedures adopted for all subsampling stages to maximise representativity of samples.</i></p> <p><i>Measures taken to ensure that the sampling is representative of the in-situ material collected, including for instance results for field duplicate/second-half sampling.</i></p> <p><i>Whether sample sizes are appropriate to the grain size of the material being sampled.</i></p>	<p>Aberfoyle:</p> <ul style="list-style-type: none"> • Early (~1990) drilling – 2 m samples composited to 6m by undocumented method. Results returning >0.2 g/t re-sampled on a 2 m basis. • Subsequent drilling – RAB/AC 2 m surface composites and 4 m composite thereafter. RC 1 m samples riffle split and composited to 4 m samples. Composite assays returning greater than 0.2 g/t re-sampled on a metre basis. <p>Croesus:</p> <ul style="list-style-type: none"> • RAB drill samples were collected in buckets below a freestanding cyclone and laid out at 1 m intervals in rows of ten metres adjacent to the drill collar. • Composite analytical samples (~3.5 kg) were initially collected over 5 m intervals for each hole and a 1 m bottom of hole analytical sample. Analytical composite samples were collected by taking a representative scoop through each 1 m drill sample. Composite assays returning greater than 100 ppb Au were resampled on an individual basis by an undocumented method. • RC drill samples were riffle split at 1 m intervals off the rig into calico bags whilst excess material was placed on the ground in 1 m piles for logging. The analytical samples were dried, crushed and split to obtain a sample less than 3.5 kg, and then fine pulverised prior to a 50 g sample being taken for analysis. <p>Delta:</p>

CRITERIA	JORC CODE EXPLANATION	COMMENTARY
		<ul style="list-style-type: none"> RC: Samples collected on 1 m intervals via a cyclone into green plastic bags. Each bag was riffle split if dry to a 2–3 kg sample and retained on site. A PVC spear sample was taken from residues to create a 5 m composite. If composites returned values ≥ 0.1 g/t, geologically interesting or had elevated arsenic levels, the original 1 m splits were collected and submitted. Original wet samples were split at this stage using wet triple riffle splitter, washed between samples. Wet samples were rare and usually outside of main mineralisation. RAB: Typically 1 m samples were composited to 5 m (occasionally 10 m) by PVC spear. Significant assay results were re-submitted on a single metre basis. DD: Core was halved. Sample length typically 1 m. <p>EGL:</p> <ul style="list-style-type: none"> RC samples riffle split into calico bags. Wet or moist samples are noted during sampling. Core was cut with diamond saw and half core sampled. All mineralised zones are sampled, including portions of visibly unmineralised hangingwall and footwall zones. Sample weights range from >1.0 kg to 3.5 kg. Samples weighed by laboratory, dried and split to <3 kg if necessary and pulverised by LM-5. Field duplicates, blanks and standards were submitted for QAQC analysis. <p>Roper River Resources:</p> <ul style="list-style-type: none"> RAB and RC holes were composited to 6 m and 4 m respectively with anomalous zones of nickel or gold being resubmitted on a metre basis. <p>Monarch:</p> <ul style="list-style-type: none"> RAB: 2 – 4 m composites scoop sampled. AC and RC 1 m splits via riffle splitter. RAB samples were composited to 4 m by scoop for initial analysis. Samples were riffle split and prepared with single stage mix and grinding. <p>SMC:</p>

personal use only

CRITERIA	JORC CODE EXPLANATION	COMMENTARY
		<ul style="list-style-type: none"> • RAB samples were collected at 1 m intervals from the drillhole collar using a plastic bucket and laid on the ground. A scoop sample was taken from each sample to form 4 m or 5 m composite. • AC: Predominantly 4 m composite samples. Methods unknown. • RAB samples were collected at 1 m intervals from the drillhole collar using a plastic bucket and laid on the ground. A scoop sample was taken from each sample to form a 5 m composite. • AC: Predominantly 4 m composite samples. • RAB: Predominantly 5 m composite samples. <p>OBM:</p> <ul style="list-style-type: none"> • RC samples were submitted either as individual 1 m samples taken onsite from cone splitter or as 4 m composite samples speared from the onsite drill sample piles. Half-core samples, cut by saw. Core sample intervals selected by geologist and defined by geological boundaries. • For drilling up to April 2020, RC samples were dried, crushed, split, pulverised and a 50 g charge taken. 4 m composite samples with gold values greater than 0.2 g/t Au were re-sampled as 1 m split samples and submitted to the lab for further analysis. • Field duplicates, blanks and standards were submitted for quality assurance and quality control (QAQC) analysis. Repeat assays were undertaken on pulp samples at the discretion of the laboratory. <p>The information presented above is derived from OBM's JORC table for its 2022 Iguana MRE.</p> <p>Beacon Minerals:</p>

personal use only

CRITERIA	JORC CODE EXPLANATION	COMMENTARY
		<ul style="list-style-type: none"> RC/AC samples were submitted either as individual 1 m samples taken onsite from cone splitter or as 4 m composite samples scooped from the onsite drill sample piles. Any 4m composites which exceeded 0.3g/t or where otherwise noted as anomalous were selected for re-sample and had 1m sample bags dispatched to the lab with these results over-writing the prior composite results DD drill were half-core samples, cut by saw. Core sample intervals selected by geologist and defined by geological boundaries. <p>Field duplicates, blanks and standards were submitted for quality assurance and quality control (QAQC) analysis. Repeat assays were undertaken on pulp samples at the discretion of the laboratory.</p>
Quality of assay data and laboratory tests	<p><i>The nature, quality and appropriateness of the assaying and laboratory procedures used and whether the technique is considered partial or total.</i></p> <p><i>For geophysical tools, spectrometers, handheld XRF instruments, etc, the parameters used in determining the analysis including instrument make and model, reading times, calibrations factors applied and their derivation, etc.</i></p> <p><i>Nature of quality control procedures adopted (e.g. standards, blanks, duplicates, external laboratory checks) and whether acceptable levels of accuracy (i.e. lack of bias) and precision have been established.</i></p>	<p>Aberfoyle:</p> <ul style="list-style-type: none"> RC/RAB: composites assayed by aqua regia AAS. Composites returning >0.2–0.3g/t Au re-submitted as 1 m samples by 50 g charge FA. AC: Composites by 50 g charge FA. Composites returning >0.2–0.3g/t Au re-submitted as 1 m samples for FA again. In areas of elevated graphite (Burke Dam), RC composites were assayed by 50 g FA. Assayed at Genalysis. <p>Croesus:</p> <ul style="list-style-type: none"> 50 g charge analysed for gold (FA/ICP-Os) by Analabs Kalgoorlie for RC and Ultratrace Perth for RAB. Lab repeats at discretion of laboratory. <p>Delta:</p>

CRITERIA	JORC CODE EXPLANATION	COMMENTARY
		<ul style="list-style-type: none"> RC and RAB: 5 m composites dispatched to Genalysis and/or ALS laboratories Kalgoorlie for aqua regia with 50 g charge with 0.01 ppm detection limit. Composite assays returning values ≥ 0.1 ppm Au, corresponding single metre samples were collected and despatched to ALS Kalgoorlie for 50 g charge FA with 0.01 ppm detection limit. Core despatched to Genalysis Kalgoorlie for 50 g charge FA with 0.01ppm detection limit. Standards of an undocumented provenance and locally (uncertified) sourced blanks inserted but frequency undocumented. One in 20 pulp duplicate frequency. Blind pulp re-assays performed. <p>EGL:</p> <ul style="list-style-type: none"> Samples were sent to Kalgoorlie Assay Laboratories to be analysed for gold by 40 g FA. Samples were also analysed at Genalysis. Certified reference material (CRM) standards were submitted. Field duplicate samples taken at rate of 1:40. <p>Roper River Resources:</p> <ul style="list-style-type: none"> 25 g sample by aqua regia/AAS finish at MiniLab Kalgoorlie. Lab repeats at discretion of laboratory. <p>Monarch:</p> <ul style="list-style-type: none"> RAB and AC: Assayed by aqua regia/AAS with 10 ppb detection limit. RC: 50 g charge FA/AAS at SGS Kalgoorlie. <p>SMC:</p> <ul style="list-style-type: none"> FA, undocumented charge and laboratory. <p>OBM:</p>

personal use only

CRITERIA	JORC CODE EXPLANATION	COMMENTARY
		<ul style="list-style-type: none"> Up to April 2020, all samples were sent to an accredited laboratory (Nagrom Laboratories in Perth, Intertek-Genalysis in Kalgoorlie or SGS in Kalgoorlie). The samples have been analysed by firing a 50 g portion of the sample. This is the classical fire assay process and will give total separation of gold. An ICP-OES finish is used. Commercially prepared standard samples and blanks are inserted in the sample stream at a rate of 1:12. Sizing results (percentage of pulverised sample passing a 75 µm mesh) are undertaken on approximately 1 in 40 samples. The accuracy (standards) and precision (repeats) of assaying are acceptable. Standards and blanks were inserted into the sample stream at a rate of approximately 1:12. Duplicates were submitted at a rate of approximately 1:30. Fire assay is considered a total technique, aqua regia is considered partial. <p>The information presented above is derived from OBM's JORC table for its 2022 Iguana MRE.</p> <p>Snowden Optiro cannot validate the above information except for the Nagrom laboratory. Snowden Optiro carried out a lab audit at Nagrom laboratory in May 2024. The audit shows no hygiene issue or fatal flaw for the gold FA procedure. Snowden Optiro has access to the field duplicate data for most drilling campaigns, CRMs and blank data for OBM drilling campaign. Snowden Optiro conducted the independent checks for the available QC data. No material issue was identified, and Snowden Optiro considers that the data is of sufficient quality for the MRE work.</p> <p>Beacon Minerals:</p> <ul style="list-style-type: none"> All assay work was conducted by BV Cunningham utilising FA/AAS analysis with 40g charge. Beacon Minerals submitted QA/QC samples every 20 samples utilising multiple different CRM providers.
Verification of sampling and assaying	<i>The verification of significant intersections by either independent or alternative company personnel.</i> <i>The use of twinned holes.</i>	Holes are not deliberately twinned in Iguana area. Monarch:

BEACON MINERALS LIMITED ACN 119 611 559

Registered Address 144 Vivian Street, Boulder, WA 6432

Website www.beaconminerals.com **Phone** 08 9093 2477

CRITERIA	JORC CODE EXPLANATION	COMMENTARY
	<p><i>Documentation of primary data, data entry procedures, data verification, data storage (physical and electronic) protocols.</i></p> <p><i>Discuss any adjustment to assay data.</i></p>	<ul style="list-style-type: none"> Geological and sample data was logged digitally and .csv or .xls files imported into Datashed SQL database with in-built validation. Samples bags were placed into numbered plastic bags and then cable tied. Samples collected daily from site by laboratory. <p>EGL:</p> <ul style="list-style-type: none"> Geological and sample data logged directly into field computer at the core yard using Field Marshall. Data is transferred to Perth via email and imported into Geobank SQL database by the database administrator (DBA). Assay files are received in .csv format and loaded directly into the database by the DBA. Hardcopy and/or digital copies of data are kept for reference if necessary. <p>OBM:</p> <ul style="list-style-type: none"> Geological and sample data logged directly into field computer at the drill rig or core yard using Field Marshall or Geobank Mobile. Data is transferred to Perth via email and imported into Geobank SQL database by the DBA. Assay files are received in .csv format and loaded directly into the database by the DBA. Hardcopy and/or digital copies of data are kept for reference if necessary. <p>Data entry, verification and storage protocols for remaining operators is unknown.</p> <p>The information presented above is derived from OBM's JORC table for its 2022 Iguana MRE.</p> <p>Beacon Minerals:</p> <ul style="list-style-type: none"> Geological and sampling data was entered directly into a formatted excel file in the field which was then verified. Data was then formatted and imported into Datashed 5 passing through further validation before acceptance into the database.

personal use only

CRITERIA	JORC CODE EXPLANATION	COMMENTARY
<p>Location of data points</p>	<p><i>Accuracy and quality of surveys used to locate drillholes (collar and downhole surveys), trenches, mine workings and other locations used in Mineral Resource estimation.</i></p> <p><i>Specification of the grid system used.</i></p> <p><i>Quality and adequacy of topographic control.</i></p>	<p>Aberfoyle:</p> <ul style="list-style-type: none"> All drilling not surveyed. Collars located on AMG Zone 51 Grid utilised. <p>Croesus:</p> <ul style="list-style-type: none"> TGRC holes were collar surveyed in AMG Zone 51 Grid. No downhole surveys. <p>Delta:</p> <ul style="list-style-type: none"> All drillholes used for resource definition surveyed by Minecomp. All post-1993 RC and DD holes downhole surveyed using EMS or Eastman single shot where possible. Where not possible, data from proximal holes was used. LAD and LZC, LZD, LAC, and selected G prefixed holes downhole surveyed by undocumented method approximately every 10 m. Many RAB holes appear to be collar surveyed. AMG Zone 51 Grid utilised except for holes in the Nyborgs region where a local grid (Lady Ida) was utilised. <p>EGL:</p> <ul style="list-style-type: none"> Collars were surveyed by differential global positioning system (GPS) in MGA Zone 51. No downhole surveying performed. <p>Roper River Resources:</p> <ul style="list-style-type: none"> No surveys post drilling. AMG Zone 51 Grid utilised. <p>Monarch:</p> <ul style="list-style-type: none"> RC and some AC collars surveyed by differential GPS. All remaining holes surveyed by GPS. MGA Zone 51 Grid utilised. IGRC holes were downhole surveyed by EMS every 5 m. RC drilling was surveyed by Electronic Multi-shot on selected holes. <p>SMC:</p> <ul style="list-style-type: none"> No evidence of post drilling surveys, MGA Zone 51 Grid utilised. <p>OBM:</p>

CRITERIA	JORC CODE EXPLANATION	COMMENTARY
		<ul style="list-style-type: none"> • (RC, DD) MGA94, Zone 51. Drillhole collar positions were picked up by a contract surveyor using RTK GPS subsequent to drilling. • Drillhole, downhole surveys are recorded every 30 m using a reflex digital downhole camera. Some RC holes not surveyed if holes short and/or drilling an early-stage exploration project. DD drillholes completed in 2019 and 2020 by OBM were surveyed using a Gyro tool. <p>The information presented above is derived from OBM's JORC table for its 2022 Iguana MRE.</p> <p>Beacon Minerals:</p> <ul style="list-style-type: none"> • Collars were picked up by a qualified surveyor in MGA94 Z 51 format utilising a RTK GPS and appropriately set control. Locations were also cross checked with hand held GPS. • DD Holes were surveyed using a Reflex Continuous Gyro system. • RC Holes were surveyed at EOH depth only, with a partial portion of the program surveyed 6m (1 rod) from EOH to avoid loss of instrument or hole collapse.
<p>Data spacing and distribution</p>	<p><i>Data spacing for reporting of Exploration Results.</i></p> <p><i>Whether the data spacing and distribution is sufficient to establish the degree of geological and grade continuity appropriate for the Mineral Resource and Ore Reserve estimation procedure(s) and classifications applied.</i></p> <p><i>Whether sample compositing has been applied.</i></p>	<ul style="list-style-type: none"> • Exploration results are reported for single holes only. • Data spacing highly variable from wide spaced ~800 m x ~80 m regional RAB to close spaced resource drilling ~10 m x ~10 m and grade control drilling at ~5 m x ~5 m. • Drillhole spacing is adequate to establish geological and grade continuity for the Iguana deposit. • Drill composites have been length weighted, 0.5 g/t lower cut-off, not top cut, maximum 2 m internal dilution.
<p>Orientation of data in relation to geological structure</p>	<p><i>Whether the orientation of sampling achieves unbiased sampling of possible structures and the extent to which this is known, considering the deposit type.</i></p>	<ul style="list-style-type: none"> • Deposits in the Lady Ida area are generally oriented on northwest trends. Once the orientation of mineralisation was established, drilling was mostly oriented towards 90° with Iguana grade control oriented towards 45°.

personal use only

CRITERIA	JORC CODE EXPLANATION	COMMENTARY
	<p><i>If the relationship between the drilling orientation and the orientation of key mineralised structures is considered to have introduced a sampling bias, this should be assessed and reported if material.</i></p>	<ul style="list-style-type: none"> • Drilling of laterite mineralisation is almost exclusively vertical in nature. <p>The Iguana Deposit presents multiple orientations of mineralisation which include both near vertical sets and shallowly dipping mineralisation zones.</p> <ul style="list-style-type: none"> • Drilling in the Iguana region has primarily been focused on -60° dipping holes, either East or West orientated. Recent drilling by Beacon Minerals replicated prior RC drilling orientations in the region. • The selection of eastern orientated drilling is primarily driven by the shallow westerly plunge of the vertical structures present in the region.
<p>Sample security</p>	<p><i>The measures taken to ensure sample security.</i></p>	<p>Unknown for all drilling except for the following:</p> <ul style="list-style-type: none"> • Monarch: Sample calicos were placed into numbered plastic bags and cable tied. Any samples going to SGS were collected daily by the lab. Samples sent to ALS were placed into sample crates and sent via courier on a weekly basis. • EGL: Samples were bagged, tied and in a secure yard. Once submitted to the laboratories they are stored in cages within a secure fenced compound. Samples are tracked through the laboratory via their LIMS. • OBM: Samples were bagged, tied and stored in a secure yard on site. Once submitted to the laboratories they were stored in cages within a secure fenced compound. Samples are tracked through the laboratory via their LIMS. <p>The information presented above is derived from OBM's JORC table for its 2022 Iguana MRE.</p> <ul style="list-style-type: none"> • Beacon Minerals: Samples were collected from the field and immediately recorded, and dispatched to BV Cunningham utilising Beacon employees or appropriately qualified contractors

CRITERIA	JORC CODE EXPLANATION	COMMENTARY
Audits or reviews	<i>The results of any audits or reviews of sampling techniques and data.</i>	<p>OBM has reviewed historical digital data, particularly from the Iguana deposit, and compared it to hardcopy and digital (including WAMEX) records.</p> <p>Snowden Optiro does not have access to the historical digital data, except for the OBM drilling. Therefore, Snowden Optiro cannot verify this comment from OBM.</p>

personal use only

Section 2 Reporting of Exploration Results

CRITERIA	JORC CODE EXPLANATION	COMMENTARY
Mineral tenement and land tenure status	<i>Type, reference name/number, location and ownership including agreements or material issues with third parties such as joint ventures, partnerships, overriding royalties, native title interests, historical sites, wilderness or national park and environmental settings. The security of the tenure held at the time of reporting along with any known impediments to obtaining a licence to operate in the area.</i>	<ul style="list-style-type: none"> • The Lady Ida project consists of M16/262 (Iguana deposit is located on M16/262), M16/263, M16/264, L15/224, L16/58, L16/62, L16/103 and L16/138. • Under the Lady Ida tenement sale agreement terms and conditions^o between Beacon, Lamerton Pty Ltd and Geoda Pty Ltd (together, GL), Beacon will sole fund the Lady Ida project until the first gold is recovered from M16/262 and processed through the Jaurdi Mill as Beacon's earn-in to the joint venture (First Milestone). • Once the First Milestone has been achieved, the unincorporated joint venture will commence as follows: <ul style="list-style-type: none"> ○ On achievement of the First Milestone, Beacon will acquire a 25% beneficial interest in the Lady Ida project. ○ Once 36,250 oz of gold have been produced from the Lady Ida project through the Jaurdi Mill, Beacon will acquire a further 25% beneficial interest in the Lady Ida project (bringing Beacon's total beneficial interest to 50%). ○ Once 72,500 oz of gold have been recovered from the Lady Ida project through the Jaurdi Mill: <ul style="list-style-type: none"> ▪ GL will transfer 100% legal and beneficial ownership of the Lady Ida project to Beacon ▪ In return for the transfer, a 4% net smelter royalty (NSR) on all gold and silver produced from the Lady Ida project will be granted by Beacon to GL. This will be documented in a royalty deed to be negotiated in good faith, with all parties acting reasonably. • The Competent Person is unaware of any licensing issues that may affect the tenure.
Exploration done by other parties	<i>Acknowledgment and appraisal of exploration by other parties.</i>	<ul style="list-style-type: none"> • Delta Gold NL (Delta) actively explored for gold from the early 1990s. An extensive program of soil sampling and RAB drilling resulted in the definition of a laterite and bedrock mineral resource in 2000 totalling 1.22 Mt at 3.15 g/t Au for 123.7 koz. Open pit mining operations at the Iguana, Lizard and Blue Tongue deposits occurred between February 2000 to August 2001. Delta merged with Goldfields Limited in 2002 to form Aurion Gold Limited (Aurion). • Aurion was acquired by Placer Dome Inc. (Placer) in 2003, who completed a multi-indicator kriging (MIK) MRE for the Lady Ida project. An undepleted Indicated and Inferred Mineral Resource totalling 12.95 Mt at 1.20 g/t Au for 501 koz was reported. Placer offered the Lady Ida project for sale and Siberia

		<p>Mining Corporation (Siberia) acquired the project in 2004. Siberia completed an unspecified amount of drilling at the project from 2004 to 2007.</p> <ul style="list-style-type: none"> • Siberia was acquired by Monarch Gold (Monarch) in 2007. Monarch completed shallow AC drilling targeting the Laterite resource at Iguana to the south of the Jamaican Rock test pit. Following this, further infill RC drilling (1,655 m) was completed. Monarch went into administration in 2008. • The project was subsequently acquired by Swan Gold. Limited information of Swan Gold’s exploration activities exists during its period of ownership, with a limited number of RC holes at the Lizard and Iguana deposits documented. A non-JORC Code 2012 compliant resource for the Lady Ida project totalling 201 koz was reported. Swan Gold changed its name to Eastern Goldfields Ltd in 2016. • No further exploration was conducted on the Lady Ida project between 2016 and 2019 before Eastern Goldfields changed its name to Ora Banda Mining Ltd (OBM) on 25 June 2019. • In 2020, OBM completed a work program aimed at updating the Lady Ida Mineral Resource for internal purposes only. An infill and extensional RC program commenced at Iguana in April 2021 aimed at upgrading and expanding the existing resource to JORC Code 2012 status. Following results from the 2021 drilling, remodelling of the Iguana deposit took place prior to the release of the 2022 MRE. • Beacon acquired the Lady Ida project from OBM in December 2023. • Entech has obtained the following information from the OBM 2022 MRE JORC Code Table 1: <ul style="list-style-type: none"> ○ Drilling, sampling and assay procedures and methods as stated in the database and confirmed from WAMEX reports and hardcopy records are considered acceptable and to be at industry standards of the time. ○ There is sufficient understanding of drilling, sampling and assay methodologies for most of the drilling in the Lady Ida region. • Beacon assumed previous operators of the Lady Ida project completed work to standards considered acceptable at the time.
Geology	<i>Deposit type, geological setting and style of mineralisation.</i>	<ul style="list-style-type: none"> • The Lady Ida project is located along the inferred trace of the Ida Fault, a north-south trending deep-seated crustal structure juxtaposing batholithic granites and subordinate basalt and banded iron formation of the Southern Cross Province against greenstones of the Eastern Goldfields Province. • The Eastern Goldfields Province sequences are metamorphosed to amphibolite facies and dominated by tholeiitic to komatiitic basalts, tremolite-chlorite rich ultramafics and psammitic to pelitic sediments. The regional stratigraphy trends north-northwest, sub-parallel to the Ida Fault, and the regional dip is sub-

		<p>vertical. The structural complexity of the region, including inferred thrusts, fault splays and cross-cutting shears, presents good potential for additional mineralisation trap sites.</p> <ul style="list-style-type: none"> The laterite resource at Iguana (Laterite) is primarily hosted within bedded iron pisolite units which form in 1-4 m thick beds under alluvial sands. The location of the lateritic beds in some locations corresponds to the location of the upper saprolite contact; however, this correlation is variable across the deposit. The contact between gold-bearing pisolites and surrounding oxide material is a gradual boundary with between 10-20 cm of unconsolidated sands and pisolites on the upper contact, and a more discrete 5-10 cm zone on the lower contact.
Drill hole information	<p><i>A summary of all information material to the understanding of the exploration results including a tabulation of the following information for all Material drill holes:</i></p> <p><i>easting and northing of the drill hole collar</i></p> <p><i>elevation or RL (Reduced Level – elevation above sea level in metres) of the drill hole collar</i></p> <p><i>dip and azimuth of the hole</i></p> <p><i>downhole length and interception depth</i></p> <p><i>hole length.</i></p>	<ul style="list-style-type: none"> The supplied database contains 4,211 drill hole collar records: 852 (AC), 63 (BH), 6 (CH), 38 (DDH), 4 (FC), 139 (GC), 1,663 (RAB), 4 water bore (WB), 1,438 (RC) and 4 (RCD). Only 1,190 holes were used to inform the MRE (426 AC, 16 DD, 192 RAB, 554 RC and 2 RCD). The MRE drill holes were plotted in Seequent Leapfrog Geo software using the MGA (1994) Zone 51 grid coordinate system for easting, northing, elevation and azimuth coordinates. Drill hole collars range from 377 mRL to 528 mRL. The dip of the drill holes ranges from -5° towards east-southeast and -90° (vertical) AC holes range in depth from 4 m to 150 m RC holes range in depth from 6 m to 250 m. DD holes range in depth from 35 m to 400 m. RAB holes range in depth from 1 m to 129 m The four RCD holes are 48 m and 78 m. The combined total metres drilled for all hole types is 187,440 m. This includes 3,387 m of mineralisation intercepts.
Data aggregation methods	<p><i>In reporting Exploration Results, weighting averaging techniques, maximum and/or minimum grade truncations (e.g. cutting of high grades) and cut-off grades are usually Material and should be stated. Where aggregate intercepts incorporate short lengths of high grade results and longer lengths of low grade results, the procedure used for such aggregation should be stated and some typical examples of such aggregations should be shown in detail.</i></p> <p><i>The assumptions used for any reporting of metal equivalent values should be clearly stated.</i></p>	<ul style="list-style-type: none"> It is assumed no manipulation of Exploration Results was undertaken. No indication of how drill hole intersections were averaged was given in the historical reports; however, it is assumed that the assay intersections have been averaged arithmetically based on equal sample lengths using no internal dilution. Drill hole intersections were reportedly not averaged. The reporting of Exploration Results does not assume a minimum grade or cutting of high grades, nor is there any information reported to indicate aggregation of assay results.

Relationship between mineralisation widths and intercept lengths	<i>These relationships are particularly important in the reporting of Exploration Results. If the geometry of the mineralisation with respect to the drill hole angle is known, its nature should be reported. If it is not known and only the down hole lengths are reported, there should be a clear statement to this effect (e.g. 'downhole length, true width not known').</i>	<ul style="list-style-type: none"> The orientation of the drilling for the Laterite was approximately perpendicular to the geometry of the mineralisation and the Competent Person considers that this supports an unbiased interpretation.
Diagrams	<i>Appropriate maps and sections (with scales) and tabulations of intercepts should be included for any significant discovery being reported. These should include, but not be limited to a plan view of drill hole collar locations and appropriate sectional views.</i>	<ul style="list-style-type: none"> Not applicable.
Balanced reporting	<i>Where comprehensive reporting of all Exploration Results is not practicable, representative reporting of both low and high grades and/or widths should be practiced to avoid misleading reporting of Exploration Results.</i>	<ul style="list-style-type: none"> Significant results of gold intersections were documented in various ASX releases since 2021 from OBM and Beacon. At the time of release of this report, RC resource definition drilling is ongoing at the Iguana deposit. The balanced reporting of results is contained in the definition of the gold resource, which has been the subject of computer modelling of a subset of all results. This subset of the data (which excludes CH, FC, WB, and select AC, RAB and RC holes) contains 1,190 drill holes totalling 49,386 m.
Other substantive exploration data	<i>Other exploration data, if meaningful and material, should be reported including (but not limited to): geological observations; geophysical survey results; geochemical survey results; bulk samples – size and method of treatment; metallurgical test results; bulk density, groundwater, geotechnical and rock characteristics; potential deleterious or contaminating substances.</i>	<ul style="list-style-type: none"> There are no known metallurgical issues related to the Iguana deposit. Primary ore was previously mined by Delta in the early 2000s, with ore treated at the Greenfields processing plant in Coolgardie. Recovery and reconciliation figures are unknown. Beacon has processed an approximate 25,000 t of Laterite material from the historical Iguana low-grade stockpiles under small mining proposals. During this period, no metallurgical recovery or amenability issues were noted. The material was processed at Beacon's Jaurdi Mill.
Further work	<i>The nature and scale of planned further work (e.g. tests for lateral extensions or depth extensions or large-scale step-out drilling). Diagrams clearly highlighting the areas of possible extensions, including the main geological interpretations and future drilling areas, provided this information is not commercially sensitive.</i>	<ul style="list-style-type: none"> Further RC resource definition drilling is ongoing at the Iguana deposit, which will be followed by an MRE update of the whole Iguana deposit area. This drilling is primarily targeting fresh rock resources. Opportunity exists to further delineate the location of mineralised controlling structures and lithological boundaries further down-dip outside of the classified Mineral Resources. Entech recommends using DD methods for this work. Diagrams of resource infill drilling is provided in a previous Beacon ASX release⁷.

Section 3 Estimation and Reporting of Mineral Resources

CRITERIA	JORC CODE EXPLANATION	COMMENTARY
Database integrity	<i>Measures taken to ensure that data has not been corrupted by, for example, transcription or keying errors, between its initial collection and its use for Mineral Resource estimation purposes.</i>	<ul style="list-style-type: none"> Entech was supplied with a MS Access database that had been converted from an SQL database. Entech audited for validation errors and visual comparison of collar positions in Leapfrog software and available source assay data for the 1,190 holes underpinning the MRE. The Beacon supplied Iguana deposit database as of July 2025 contained 4,211 drill hole collar records: 852 (AC), 63 (BH), 6 (CH), 38 (DDH), 4 (FC), 139 (GC), 1663 (RAB), 4 (WB), 1,438 (RC) and 4 (RCDD). Total metreage within the database is 187,440 m. 6 holes were excluded from the MRE due to having no assays. An additional 696 holes were excluded, which are predominantly (619) the 'G' series RC grade control (GC) holes from the Jamaican Rock test pit mined in 2000-2001. Laterite mineralisation interpretation was informed by 426 AC, 16 DD, 192 RAB, 554 RC and 2 RCD drill holes intersecting the resource, for a total of 3,387 m of drilling intersecting the resource.
	<i>Data validation procedures used.</i>	<ul style="list-style-type: none"> Entech completed various validation checks using built-in validation tools in Leapfrog and data queries in MS Access such as overlapping samples, duplicate entries, missing data, sample length exceeding hole length, unusual assay values and a review of below detection limit samples. A visual examination of the data was also completed to check for erroneous downhole surveys. The data validation process did not identify any major drill hole data issues that would materially affect the MRE outcomes. Entech's database checks included the following: <ul style="list-style-type: none"> Checking for duplicate drill hole names and duplicate coordinates in collar table. Checking for missing drill holes in the collar, survey, assay and geology tables based on drill hole names. Checking for survey inconsistencies including dips and azimuths <0°, dips >90°, azimuths >360° and negative depth values. Checking for inconsistencies in the 'From' and 'To' fields of the assay and geology tables. The inconsistency checks included the identification of negative values, overlapping intervals, duplicate intervals, gaps and intervals where the 'From' value is greater than the 'To' value.
Site visits	<i>Comment on any site visits undertaken by the Competent Person and the outcome of those visits.</i>	<ul style="list-style-type: none"> The Competent Person undertook a 2-day site visit on 14 and 15 July 2025. The objectives of the site included: <ul style="list-style-type: none"> Review and observe the ongoing RC resource definition drilling at the Iguana deposit. Review results from the latest AC drill campaign for the Laterite mineralisation at Iguana. Geologically inspect the Jamaican Rock test pit.

		<ul style="list-style-type: none"> ○ Observe the RC sample collection, preparation, logging, and QAQC processes. ○ Inspect and audit the primary laboratory.
	<i>If no site visits have been undertaken indicate why this is the case.</i>	N/A
Geological interpretation	<i>Confidence in (or conversely, the uncertainty of) the geological interpretation of the mineral deposit.</i>	<ul style="list-style-type: none"> ● Confidence in the Laterite mineralisation continuity was based on interpreted geological wireframe(s), AC and RC chip logging and assay data that were cross-referenced with observations from the Competent Person's site visit and by Beacon geologists. ● Oxidation weathering profiles were re-interpreted and modelled by Entech to assist with understanding Laterite/Supergene and fresh rock mineralisation relationships. Weathering and oxidation horizons have been modelled from downhole logged geology and assay data and have been used for bulk density assessment purposes. ● Laterite domaining was interpreted primarily on AC and RC logged lithology, with the descriptor of pisolite gravel being a key Laterite identifying feature. Other factors included the re-interpreted Iguana deposit lithology model and grade distribution. ● Confidence in the mineralisation continuity was based on cross-referencing previous MRE geological interpretations, comparison numerical modelling studies and historically mined exposures of Laterite mineralisation. ● Laterite mineralisation interpretation was informed by drill holes intersecting the resource. ● Data from a total of 49,386 m of drilling from 426 AC, 16 DD, 192 RAB, 554 RC and 2 RCD drill holes were used for the MRE. Laterite mineralisation interpretation was informed by 426 AC, 16 DD, 192 RAB, 554 RC and 2 RCD drill holes intersecting the resource, for a total of 3,387 m of drilling. ● Interpretation of the Laterite domain was undertaken in Leapfrog Geo software. A nominal grade cut-off of >0.2 g/t Au was used to interpret the Laterite mineralisation. Mineralisation intercepts were manually selected in Leapfrog Geo prior to creating an implicit vein model. ● Entech considers confidence is high in the geological interpretation and continuity of the gold mineralisation within the Laterite domain. <p>Laterite domain extents are clearly defined by extensive AC and RC drilling and geo-referencing of the Iguana deposit surface lithology mapping.</p>
	<i>Nature of the data used and of any assumptions made.</i>	<ul style="list-style-type: none"> ● Assumptions with respect to mineralisation continuity (plunge, strike and dip) in the open pit Mineral Resource were drawn directly from: <ul style="list-style-type: none"> ○ historical open pit mine exposures ○ drill hole lithological logging ○ interpreted lithology contacts ○ variably spaced AC and RC drilling, nominally 10 mN × 10 mE, but up to 50 mN × 50 mE ○ open-source documentation/records/files.
	<i>The effect, if any, of alternative interpretations on Mineral Resource estimation.</i>	<ul style="list-style-type: none"> ● Entech's interpretation of assumptions related to the geometry and orientation of the Laterite mineralisation within the Iguana deposit was similar to the 2024 MRE. Entech

		<p>combined the discrete Laterite lodges used in previous MREs into a single domain for the updated MRE.</p> <ul style="list-style-type: none"> Entech is of the opinion that alternative interpretations and additional drill hole information would be unlikely to result in significant orientation or volume variations. This conclusion was based on undertaking grade-based probabilistic volume modelling (numerical modelling) and review of the lithology and assay data of the recent (May-June 2025) AC resource infill program.
	<i>The use of geology in guiding and controlling Mineral Resource estimation.</i>	<ul style="list-style-type: none"> The updated oxidation surfaces and lithology logging of laterite, including the descriptor of pisolite gravel/sand, were used to constrain the Laterite mineralisation estimation.
	<i>The factors affecting continuity both of grade and geology.</i>	<ul style="list-style-type: none"> The Iguana deposit is primarily defined by AC, RAB and RC drilling, with outcrop mapping, chip tray logs and some historical reports also available for the MRE. At a deposit scale, additional geological information from DD programs, particularly within the extents of the bedrock mineralisation, would improve confidence in the current interpretation and orientation of key ore controlling structures.
Dimensions	<i>The extent and variability of the Mineral Resource expressed as length (along strike or otherwise), plan width, and depth below surface to the upper and lower limits of the Mineral Resource.</i>	<ul style="list-style-type: none"> The Laterite mineralisation is bound within a 900 m(E) × 900 m(N) area and 10 m(RL) extent. Classified Mineral Resources are constrained within the Laterite domain boundaries. The MRE on which this Table 1 is based has the following extents: <ul style="list-style-type: none"> above 150 mRL from 275000 mE to 276600 mE from 6623435 mN to 663665 mN.
Estimation and modelling techniques	<i>The nature and appropriateness of the estimation technique(s) applied and key assumptions, including treatment of extreme grade values, domaining, interpolation parameters and maximum distance of extrapolation from data points. If a computer assisted estimation method was chosen include a description of computer software and parameters used.</i>	<ul style="list-style-type: none"> Domain intercepts were flagged and implicitly modelled in Leapfrog Geo software. The Laterite mineralisation domain used a nominal 0.2 g/t Au cut-off grade, with internal dilution <0.2 g/t used in the domain to preserve geological continuity where supported by oxidation state and laterite lithology logging. Interpretation was done in collaboration with Beacon’s geology manager to ensure Entech’s modelling represented site-based observations and understanding of geological and mineralisation controls. The Laterite interpretation used select AC, RAB, RC, RCD and DD drill hole data. Tightly spaced (3.5 m × 3.5 m) RC GC infill holes (‘G’ prefix) from the Jamaican Rock test pit were excluded from the interpretation as these holes caused inconsistencies in domain geometry and validation issues. All interpreted intervals were snapped to sample intervals prior to the construction of implicitly modelled 3D domain solid. All drill hole samples and block model blocks were coded for mineralisation and oxidation domains.

personal use only

		<ul style="list-style-type: none"> • Compositing approaches were selected to honour the mineralisation style, geometry, expected grade variability and potential mining selectivity. All samples composited were flagged by hole type and domain. • Drill samples were composited to 1 m lengths honouring lode domain boundaries using a best-fit approach whereby any small uncomposited intervals (residuals) were divided evenly between the composites. • Composites were declustered and reviewed for statistical outliers, and top caps were applied within Leapfrog Edge software. A 10 g/t Au top-cap was applied to the Laterite domain. • Exploratory data analysis (EDA), variogram modelling and estimation validation were completed in Leapfrog Edge software and cross-checked in Supervisor V9.1. • Variography analyses were completed on declustered and capped downhole composites. A robust variogram model with a low to moderate nugget was delineated and used in Kriging Neighbourhood Analysis (KNA) to determine parent cell estimation size and optimise search neighbourhoods. • Maximum continuity of 110 m was modelled in the Laterite domain variogram. • Search neighbourhoods broadly reflected the direction of maximum continuity within the plane of mineralisation, ranges, and anisotropy ratios from the variogram models. Search neighbourhood parameters were optimised through KNA and validation of interpolation outcomes. • An Ordinary Kriged (OK) estimation technique using Leapfrog Edge software was completed for the Laterite estimation. • The maximum distance of extrapolation from data points was approximately half the drill hole data spacing distance.
	<p><i>The availability of check estimates, previous estimates and/or mine production records and whether the Mineral Resource estimate takes appropriate account of such data.</i></p>	<ul style="list-style-type: none"> • A check estimate in Leapfrog Edge was undertaken using Inverse Distance Weighting Squared (IDW2), with a 5% grade variance noted relative to the OK estimate outcome. • Previous MREs were completed by Delta Gold in 1995, 1999 and 2000, Placer Dome in 2003, Monarch Gold in 2007 and Ora Banda Mining in 2022. • The last publicly reported MRE was the November 2024 Iguana Mineral Resource Estimate⁸ prepared by Snowden Optiro under the guidelines of the 2012 JORC Code, which reported Measured, Indicated and Inferred Mineral Resources of 17 Mt at 1.11 g/t Au at a 0.5 g/t Au cut-off within an optimised A\$4,000 open pit shell. Of this total, 583 kt at 1.49 g/t Au was attributable to the Laterite mineralisation domains. • By comparison, the key differences in Entech’s approach (which account for variations to historical Mineral Resources in the Laterite) included: <ul style="list-style-type: none"> ○ New Laterite resource AC infill and extensional drilling information - 234 AC holes were drilled at Iguana for 2,363 m intersecting mineralisation and increasing the drilling density underpinning the Laterite resource inventory.

	<ul style="list-style-type: none"> ○ Domaining - Update to a single Laterite mineralisation domain using a nominal 0.2g/t cut-off. ○ Update to the Laterite density - assigned to oxide bulk density value. ○ Increase in classified material due to the MRE not being constrained to an optimised pit shell where no RPEEE allowances were made in the 2024 MRE. ● Mining of Laterite mineralisation was undertaken in in 2000-2001 as part of the Jamaican Rock test pit trial. Historical mine production records were not available, and Entech could therefore not complete reconciliation studies.
<i>The assumptions made regarding recovery of by-products.</i>	<ul style="list-style-type: none"> ● No assumptions were made with respect to by-product recovery.
<i>Estimation of deleterious elements or other non-grade variables of economic significance (e.g. sulfur for acid mine drainage characterisation).</i>	<ul style="list-style-type: none"> ● No assumptions were made within the MRE with respect to deleterious variables or by-products.
<i>In the case of block model interpolation, the block size in relation to the average sample spacing and the search employed.</i>	<ul style="list-style-type: none"> ● Block sizes used were Y: 10 mN, X: 10 mE, Z: 2.5 mRL, with sub-celling of Y: 1.25 mN, X: 1.25 mE, Z: 0.3125 mRL. The parent block size was selected to provide suitable volume fill, given the available data spacing and mining selectivity within an open pit framework. ● The AC and RC drill data spacing for the Laterite mineralisation was nominally 10 mE × 10 mN but was down to <5 mE × 5 mN in places within the Jamaican Rock test pit. Holes were generally drilled on standardised resource definition infill pattern. ● A two-pass estimation strategy was used, whereby search ranges reflected variogram maximum modelled continuity and a minimum of 10, maximum of 20 composites for search pass 1. The second search reduced the minimum number of composites required in the neighbourhood to 4. ● The search range in search pass 2 was increased a further ~10% of the variogram maximum modelled continuity. All other parameters remained the same. ● All Measured and Indicated Mineral Resources were estimated in search pass 1. ● All blocks which did not meet the criteria remained unestimated.
<i>Any assumptions behind modelling of selective mining units.</i>	<ul style="list-style-type: none"> ● No assumptions regarding selective mining units were made.
<i>Any assumptions about correlation between variables.</i>	<ul style="list-style-type: none"> ● Only one element (gold) was estimated.
<i>Description of how the geological interpretation was used to control the resource estimates.</i>	<ul style="list-style-type: none"> ● The estimation was completed within the geologically interpreted Laterite domain and a hard boundary was used for the estimate. ● The Laterite domain was guided and constrained by the re-interpreted oxidation contacts.
<i>Discussion of basis for using or not using grade cutting or capping.</i>	<ul style="list-style-type: none"> ● Statistical analysis undertaken included the review of the Laterite domain coefficient of variance (CV) value and cumulative frequency graph for the inflection point above the 95th percentile. ● Upon review, a 10 g/t Au top-cap was applied to the Laterite domain. This resulted in a ~7% reduction in metal and the top-capping of 25 composites.

	<i>The process of validation, the checking process used, the comparison of model data to drill hole data, and use of reconciliation data if available.</i>	<ul style="list-style-type: none"> Global and local validation of the gold estimated outcomes was undertaken with statistical analysis, swath plots and visual comparison (cross and long sections) against input data. Global comparison of declustered and capped composite mean grade against estimated mean highlighted a -9% variation.
Moisture	<i>Whether the tonnages are estimated on a dry basis or with natural moisture, and the method of determination of the moisture content.</i>	<ul style="list-style-type: none"> The tonnages were estimated on a dry basis. No moisture values were reviewed.
Cut-off parameters	<i>The basis of the adopted cut-off grade(s) or quality parameters applied.</i>	<ul style="list-style-type: none"> The cut-off grade used for reporting of the Laterite Mineral Resources was 0.5 g/t Au within an open pit mining framework. The value applied was based on feedback from Beacon personnel on the planned mining cut-off grade.
Mining factors or assumptions	<i>Assumptions made regarding possible mining methods, minimum mining dimensions and internal (or, if applicable, external) mining dilution. It is always necessary as part of the process of determining reasonable prospects for eventual economic extraction to consider potential mining methods, but the assumptions made regarding mining methods and parameters when estimating Mineral Resources may not always be rigorous. Where this is the case, this should be reported with an explanation of the basis of the mining assumptions made.</i>	<ul style="list-style-type: none"> No mining factors or assumptions have been made. The Laterite resource is nominally 0-5 m below the topographic surface, with previous mining depletion to ~35 m below the topographic surface within the Jamaican Rock test pit. Considerations of the available drill hole spacing and the vertical depth of Mineral Resources, nominally 0–5 m below natural surface, within Beacon’s tenement boundary. Entech considers that material at this depth would fall under the definition of RPEEE within an open pit mining framework. Mining dilution varies from 10% to 20% according to weathering state. Mining recovery is assumed to be 95%. These parameters were provided by Beacon.
Metallurgical factors or assumptions	<i>The basis for assumptions or predictions regarding metallurgical amenability. It is always necessary as part of the process of determining reasonable prospects for eventual economic extraction to consider potential metallurgical methods, but the assumptions regarding metallurgical treatment processes and parameters made when reporting Mineral Resources may not always be rigorous. Where this is the case, this should be reported with an explanation of the basis of the metallurgical assumptions made.</i>	<ul style="list-style-type: none"> No metallurgical recovery factors have been applied within the block model. Limited historical testwork was undertaken by Delta Gold (previous operator). The 2022 Iguana MRE⁹ states the following recoveries: <ul style="list-style-type: none"> Oxide – 96% Transitional – 93% Fresh – 88%. A recently processed historical stockpile (25,000 t) of Laterite ore from the Iguana deposit was processed at Beacon’s Jaurdi milling operations. Due to mixing of fresh rock ore stockpiles from Beacon’s other operations, reliable recovery data are unavailable. Entech recommends that Beacon conduct a round of transitional and fresh rock metallurgical testwork for future mining in determining any potential factors or assumptions with respect to deleterious variables or by-products.
Environmental factors or assumptions	<i>Assumptions made regarding possible waste and process residue disposal options. It is always necessary as part of the process of determining reasonable prospects for eventual economic extraction to consider the potential environmental impacts of the mining and processing operation. While at this stage the determination of</i>	<ul style="list-style-type: none"> No environmental factors were applied to the Mineral Resources or MRE tabulations. Entech understands the Iguana deposit is not located in an environmentally sensitive area and therefore any approvals given would restrict full development of the deposit.

	<p>potential environmental impacts, particularly for a Greenfields project, may not always be well advanced, the status of early consideration of these potential environmental impacts should be reported. Where these aspects have not been considered this should be reported with an explanation of the environmental assumptions made.</p>												
Bulk density	<p>Whether assumed or determined. If assumed, the basis for the assumptions. If determined, the method used, whether wet or dry, the frequency of the measurements, the nature, size and representativeness of the samples.</p>	<ul style="list-style-type: none"> A total of 377 records were used for bulk density determination. Collectively, Beacon and Entech could not source the original bulk density results and were unable to verify the methods Entech has relied on a recent (2025) set of grab samples taken from the Jamaican Rock test pit and analogous deposits within the Eastern Goldfields to verify historical average bulk density values. 											
	<p>The bulk density for bulk material must have been measured by methods that adequately account for void spaces (vugs, porosity, etc), moisture and differences between rock and alteration zones within the deposit.</p>	<ul style="list-style-type: none"> Previous MREs state historical (pre-2003) bulk density measurements were taken using the downhole gamma methodology by previous owner, Delta Gold. 											
	<p>Discuss assumptions for bulk density estimates used in the evaluation process of the different materials.</p>	<ul style="list-style-type: none"> The following density values were assigned based on weathering/oxidation surfaces and used for the estimate: <table border="1" data-bbox="1131 790 2016 917"> <thead> <tr> <th>Weathering Type</th> <th>Oxide</th> <th>Transitional</th> <th>Fresh</th> </tr> </thead> <tbody> <tr> <td>Block Model Code</td> <td>1</td> <td>2</td> <td>3</td> </tr> <tr> <td>Dry bulk density (g/cm³)</td> <td>2.20</td> <td>2.40</td> <td>2.80</td> </tr> </tbody> </table> <ul style="list-style-type: none"> In Entech's opinion, the amount of historical sample data used to determine bulk density results is low and further bulk density data should be obtained in future drill programs to further quantify results, particularly in the transitional and fresh rock profiles. 	Weathering Type	Oxide	Transitional	Fresh	Block Model Code	1	2	3	Dry bulk density (g/cm ³)	2.20	2.40
Weathering Type	Oxide	Transitional	Fresh										
Block Model Code	1	2	3										
Dry bulk density (g/cm ³)	2.20	2.40	2.80										
Classification	<p>The basis for the classification of the Mineral Resources into varying confidence categories.</p>	<ul style="list-style-type: none"> The open pit Laterite gold resource within the Iguana deposit contains Measured, Indicated and Inferred Mineral Resources. Mineral Resources were classified based on geological and grade continuity confidence drawn directly from: <ul style="list-style-type: none"> drill hole methodology, data quality, spacing and orientation geological domaining estimation quality parameters. The following classification criteria was applied to the Laterite resources: <ul style="list-style-type: none"> Measured Mineral Resources were defined where a higher level of geological confidence in geometry, continuity, and grade was demonstrated, and were identified as areas where: <ul style="list-style-type: none"> Blocks were well supported by drill hole data, with drilling averaging a nominal 15 m x 15 m or less between drill holes. Blocks were interpolated with a neighbourhood informed by a minimum 14–20 composites. 											

		<ul style="list-style-type: none"> ▪ Blocks were all estimated in search pass 1. ○ Indicated Mineral Resources were defined where a moderate level of geological confidence in geometry, continuity, and grade was demonstrated, and were identified as areas where: <ul style="list-style-type: none"> ▪ Blocks were well supported by drill hole data, with drilling averaging a nominal 20 m × 20 m or less between drill holes. ▪ Blocks were interpolated with a neighbourhood informed by a minimum 10–20 composites. ▪ Blocks were all estimated in search pass 1. ○ Inferred Mineral Resources were defined where a lower level of geological confidence in geometry, continuity and grade was demonstrated, and were identified as areas where: <ul style="list-style-type: none"> ▪ Blocks were well supported by drill hole data, with drilling averaging a nominal 50 m × 50 m or less between drill holes. ▪ Blocks were interpolated with a neighbourhood informed by a minimum of 4 composites. ▪ Blocks were all estimated within search passes 1 and 2.
	<i>Whether appropriate account has been taken of all relevant factors (ie relative confidence in tonnage/grade estimations, reliability of input data, confidence in continuity of geology and metal values, quality, quantity and distribution of the data).</i>	<ul style="list-style-type: none"> ● Consideration has been given to all factors material to Mineral Resource outcomes, including but not limited to confidence in volume and grade delineation, continuity and preferential orientation mineralisation; quality of data underpinning Mineral Resources, nominal drill hole spacing and estimation quality (slope of regression, number of samples, distance to informing samples).
	<i>Whether the result appropriately reflects the Competent Person's view of the deposit.</i>	<ul style="list-style-type: none"> ● The delineation of Measured, Indicated and Inferred Mineral Resources appropriately reflects the Competent Person's view on continuity and risk at the Iguana deposit.
Audits or reviews	<i>The results of any audits or reviews of Mineral Resource estimates.</i>	<ul style="list-style-type: none"> ● Internal peer review was undertaken by Entech with a focus on independent resource tabulation, block model validation, verification of technical inputs, and approaches to domaining, interpolation and classification.
Discussion of relative accuracy/confidence	<i>Where appropriate a statement of the relative accuracy and confidence level in the Mineral Resource estimate using an approach or procedure deemed appropriate by the Competent Person. For example, the application of statistical or geostatistical procedures to quantify the relative accuracy of the resource within stated confidence limits, or, if such an approach is not deemed appropriate, a qualitative discussion of the factors that could affect the relative accuracy and confidence of the estimate.</i>	<ul style="list-style-type: none"> ● Local variances to the tonnage, grade and metal distribution are expected with further definition drilling. It is the opinion of the Competent Person that these variances will not significantly affect the economic extraction of the Laterite resource and the application of the Indicated and Inferred classification extents appropriately convey this risk. ● The MRE is considered fit for the purpose for grade control, short-term and life-of-mine (LOM) planning and economic evaluation.
	<i>The statement should specify whether it relates to global or local estimates, and, if local, state the relevant tonnages, which should be relevant to technical and economic evaluation. Documentation should include assumptions made and the procedures used.</i>	<p>The Mineral Resource Statement relates to global tonnage and grade estimates.</p> <ul style="list-style-type: none"> ● No formal confidence intervals or recoverable resources were undertaken or derived.

	<p><i>These statements of relative accuracy and confidence of the estimate should be compared with production data, where available.</i></p>	<ul style="list-style-type: none"> • Original production data from previous mining of Laterite resources or the Jamaican Rock test pit trial were not made available to Beacon at the time of acquiring the asset from OBM. • In a previous ASX release¹⁰ by OBM, total recorded production of 39,100 oz consisted of: <ul style="list-style-type: none"> ○ Laterite – 348,500 t at 3.16 g/t Au for 35,500 oz ○ Jamaican Rock test pit – 52,500 t at 2.06 g/t Au for 3,600 oz.
--	--	--

JORC Section 4 - Estimation and Reporting of Ore Reserves – Iguana Laterites

Criteria	JORC Code explanation	Commentary
Mineral Resource estimate for conversion to Ore Reserves	<ul style="list-style-type: none"> • <i>Description of the Mineral Resource estimate used as a basis for the conversion to an Ore Reserve.</i> • <i>Clear statement as to whether the Mineral Resources are reported additional to, or inclusive of, the Ore Reserves.</i> 	<ul style="list-style-type: none"> • A JORC 2012 compliant Mineral Resource estimate was completed by Mr James Heggie of Entech Pty Ltd. This Mineral Resource estimate was the basis for BCN's' Lady Ida Mineral Resource Estimate announcement dated 5th August 2025. The mineral resource is inclusive of Gold only. • The Mineral Resource is reported inclusive of the Ore Reserve.
Site visits	<ul style="list-style-type: none"> • Comment on any site visits undertaken by the Competent Person and the outcome of those visits. • If no site visits have been undertaken indicate why this is the case. 	<ul style="list-style-type: none"> • A site visit was undertaken by the Competent Person (Gary McCrae) on September 11, 2024.
Study status	<ul style="list-style-type: none"> • The type and level of study undertaken to enable Mineral Resources to be converted to Ore Reserves. • The Code requires that a study to at least Prefeasibility Study level has been undertaken to convert Mineral Resources to Ore Reserves. Such studies will have been carried out and will have determined a mine plan that is technically achievable and economically viable, and that material Modifying Factors have been considered. 	<ul style="list-style-type: none"> • The Ore Reserve is based upon the August 2025 Prefeasibility Study. • As part of the Study a mine plan which is technically achievable and economically viable has been developed. • Material Modifying Factors have been considered as part of the mine plan.
Cut-off parameters	<ul style="list-style-type: none"> • The basis of the cut-off grade(s) or quality parameters applied. 	<ul style="list-style-type: none"> • The cut-off grade is calculated as part of the mine optimisation analysis. For Ore Reserve calculations the cut-off grade was 0.53 g/t gold (undiluted). Revenue based assumptions considered in the cut-off grade calculations included an assumed gold price of A\$4,500/oz, the WA State gold royalty of 2.5% a processing recovery reflective of a gold metal loss of 0.165g/t (tailings and solution losses).
Mining factors or assumptions	<ul style="list-style-type: none"> • The method and assumptions used as reported in the Prefeasibility or Feasibility Study to convert the Mineral Resource to an Ore Reserve (i.e. either by application of appropriate factors by optimisation or by preliminary or detailed design). 	<ul style="list-style-type: none"> • The Mineral Resource model was factored to generate a diluted Ore Reserve during the estimation process. • Detailed mine designs have been completed.

BEACON MINERALS LIMITED ACN 119 611 559

Registered Address 144 Vivian Street, Boulder, WA 6432

Website www.beaconminerals.com **Phone** 08 9093 2477

Criteria	JORC Code explanation	Commentary
	<ul style="list-style-type: none"> The choice, nature and appropriateness of the selected mining method(s) and other mining parameters including associated design issues such as pre-strip, access, etc. The assumptions made regarding geotechnical parameters (e.g. pit slopes, stope sizes, etc), grade control and pre-production drilling. The major assumptions made and Mineral Resource model used for pit and stope optimisation (if appropriate). The mining dilution factors used. The mining recovery factors used. Any minimum mining widths used. The manner in which Inferred Mineral Resources are utilised in mining studies and the sensitivity of the outcome to their inclusion. The infrastructure requirements of the selected mining methods. 	<ul style="list-style-type: none"> The ore zone geometries coupled with the regolith profiles and overall pit depths (<12 metres) indicate that mining by conventional load and haul open pit mining methods are most suitable. The mining fleet was assumed to be owner operated and comprised of 90t haul trucks, 120t class excavator and matching ancillary equipment. The geotechnical parameters used for optimisation and pit design was based upon those considered reasonable by the Competent Person for the mining of shallow (<12m deep) laterite pits. The Ore Reserve has been determined using the August 2025 mineral resource estimate generated by Mr James Heggie of Entech Pty Ltd. This mineral resource estimate model was titled "iguana_laterite_mre_geo". Additional mining dilution of 5% at 0.00g/t was applied. This factor was based upon the proposed fleet size and geological geometry. Mining recovery of 95% was applied. This factor was based upon the proposed fleet size and geological geometry. No minimum mining widths were utilised. Inferred Resources were assumed to be waste material throughout the course of the study and subsequent Ore Reserve calculations. The infrastructure required for the Lady Ida open pit operations have been accounted for and have been included in the work which formed the basis for the Ore Reserve estimate. Planned infrastructure includes: <ul style="list-style-type: none"> Site offices and ablutions. Maintenance Workshop. Wash Pad Dust Suppression Water Supply Services including, electrical power (supply, transmission, and distribution), water and compressed air. Water storage dam Access/Haul Road Upgrades Waste Storage Facility ROM Pad

personal use only

Criteria	JORC Code explanation	Commentary
		<ul style="list-style-type: none"> Processing will be conducted off-site at the Jaurdi Processing Facility which is located approximately 43km from Lady Ida via an established existing, well-maintained, private access road operated by BCN and the gazetted Jaurdi Hills Rd.
Metallurgical factors or assumptions	<ul style="list-style-type: none"> The metallurgical process proposed and the appropriateness of that process to the style of mineralisation. Whether the metallurgical process is well-tested technology or novel in nature. The nature, amount and representativeness of metallurgical test work undertaken, the nature of the metallurgical domaining applied and the corresponding metallurgical recovery factors applied. Any assumptions or allowances made for deleterious elements. The existence of any bulk sample or pilot scale test work and the degree to which such samples are considered representative of the orebody as a whole. For minerals that are defined by a specification, has the ore reserve estimation been based on the appropriate mineralogy to meet the specifications? 	<ul style="list-style-type: none"> The Jaurdi Processing facility utilizes conventional CIP methods. Gold extraction of the Lady Ida ore is most suited to conventional CIP methods. CIP is a well-tested existing metallurgical technology. The average metallurgical recovery used for the estimation of the Ore Reserve was 82.5%. This figure was based upon metallurgical testwork which determined total gold metal losses 0.165g/t through tailing and solution losses (0.15g/t in tailings and 0.015g/t in solution losses). BCN will complete additional Metallurgical test work in the future. No deleterious have been identified in the work completed to date. Material has been successfully processed during historical mining operations. Not applicable, gold only.
Environmental	<ul style="list-style-type: none"> The status of studies of potential environmental impacts of the mining and processing operation. Details of waste rock characterisation and the consideration of potential sites, status of design options considered and, where applicable, the status of approvals for process residue storage and waste dumps should be reported. 	<ul style="list-style-type: none"> Environmental permitting by the Western Australian DMIRS and DWER has been received (Registration ID 500587). Waste rock is typically non-acid forming. Waste material will be stored in a conventional above surface waste dump. Tailings will be stored at the Jaurdi processing plant site in excavated open pit workings or the purpose-built tailing storage facility. The Jaurdi processing facility operates under Department of Water and Environmental Regulation (DWER) License L9247/2020/1 in accordance with the Environmental Protection Act WA 1986 (EPA). The Jaurdi processing facility holds two groundwater licenses namely GWL201802(4) and GWL203729(3).

BEACON MINERALS LIMITED ACN 119 611 559

Registered Address 144 Vivian Street, Boulder, WA 6432

Website www.beaconminerals.com **Phone** 08 9093 2477

Criteria	JORC Code explanation	Commentary
Infrastructure	<ul style="list-style-type: none"> The existence of appropriate infrastructure: availability of land for plant development, power, water, transportation (particularly for bulk commodities), labour, accommodation; or the ease with which the infrastructure can be provided or accessed. 	<ul style="list-style-type: none"> The Jaurdi processing facility mine closure plan has been developed in accordance with the DMP and EPA Guidelines for preparing Mine Closure plans. The Ore Reserve mine plan will require installation of infrastructure. The infrastructure requirements include:- <ul style="list-style-type: none"> Site offices and ablutions. Maintenance Workshop. Wash Pad Dust Suppression Water Supply Services including, electrical power (supply, transmission, and distribution), water and compressed air. Water storage dam Access/Haul Road Upgrades Waste Storage Facility ROM Pad The tenements encompassing the Lady Ida project area are granted mining leases with sufficient and suitable terrain for the supply and installation of all required infrastructure. As such the Competent Person sees no reason the infrastructure could not be installed at the site. Sufficient water will be sourced from BCN's bore field. All processing infrastructure including the tailings storage facility is in place at the Jaurdi processing facility. Site access is via the gazetted Jaurdi Hills Rd and an existing, well-maintained, private access road operated by BCN. Labour will be sourced from Kalgoorlie or Coolgardie and housed and messaged on-site in purpose-built accommodation facilities.
Costs	<ul style="list-style-type: none"> The derivation of, or assumptions made, regarding projected capital costs in the study. The methodology used to estimate operating costs. 	<ul style="list-style-type: none"> Capital costs have been supplied by Beacon based upon supplier and contract quotes as well as contemporary in-house knowledge and experience in the establishment of similar mining operations.

personal use only

Criteria	JORC Code explanation	Commentary
	<ul style="list-style-type: none"> • Allowances made for the content of deleterious elements. • The derivation of assumptions made of metal or commodity price (s), for the principal minerals and co-products. • The source of exchange rates used in the study. • Derivation of transportation charges. • The basis for forecasting or source of treatment and refining charges, penalties for failure to meet specification, etc. • The allowances made for royalties payable, both Government and private. 	<ul style="list-style-type: none"> • Operating costs have been supplied by Beacon based upon supplier and contract quotes as well as contemporary in-house knowledge and experience of those for similar mining operations. • Work completed to date has not suggested the presence of deleterious elements. • An assumed gold price of A\$4,500/oz has been adopted for the financial modelling as per BCN corporate guidance. • Single commodity pricing for gold only. • Cost models use Australian dollars. • All transportation charges are based upon supplier and contractor quotes and were supplied by Beacon. • Treatment costs are based on current Jaurdi milling costs. • Allowances have been made for the 2.5% Western Australian State Gold Royalty. No 3rd Party Royalties are payable for the first 72,500oz recovered.
Revenue factors	<ul style="list-style-type: none"> • The derivation of, or assumptions made regarding revenue factors including head grade, metal or commodity price(s) exchange rates, transportation and treatment charges, penalties, net smelter returns, etc • The derivation of assumptions made of metal or commodity price(s), for the principal metals, minerals and co-products. 	<ul style="list-style-type: none"> • Using a long-term gold price of A\$4,500/oz as per Beacon corporate guidance. • Single commodity pricing for gold only, using a long-term gold price of A\$4,500/oz as per BCN corporate guidance. • Perth Mint gold price on the 25th September 2025 was in excess of A\$5,680/oz.
Market assessment	<ul style="list-style-type: none"> • The demand, supply and stock situation for the particular commodity, consumption trends and factors likely to affect supply and demand into the future. • A customer and competitor analysis along with the identification of likely market windows for the product. • Price and volume forecasts and the basis for these forecasts. • For industrial minerals the customer specification, testing and acceptance requirements prior to a supply contract. 	<ul style="list-style-type: none"> • Gold doré will be sold at spot price to the Perth Mint as it is produced. • The market window is unlikely to change. • The price is likely to go up, down or remain the same. • Not an industrial mineral.

Criteria	JORC Code explanation	Commentary
Economic	<ul style="list-style-type: none"> The inputs to the economic analysis to produce the net present value (NPV) in the study, the source and confidence of these economic inputs including estimated inflation, discount rate, etc. NPV ranges and sensitivity to variations in the significant assumptions and inputs. 	<ul style="list-style-type: none"> The Study is based upon a financial model that has been prepared to a prefeasibility study level of accuracy (+/-15%). All Inputs from mining operations, processing, transportation and sustaining capital as well as contingencies have been scheduled and evaluated to generate a full life of mine cost model. Economic inputs were supplied by Beacon based upon supplier and contract quotes as well as contemporary in-house knowledge and experience of those for similar mining operations. No discount rate has been applied. The NPV of the project is positive at the cost parameters and assumed gold price. Sensitivity analyses to the gold price have been completed. The Ore Reserve is still economically viable with a downward commodity price movement of approximately 45%
Social	<ul style="list-style-type: none"> The status of agreements with key stakeholders and matters leading to social license to operate. 	<ul style="list-style-type: none"> All agreements, where applicable with key stakeholders including traditional landowner claimants over the mining tenements are in place.
Other	<p>To the extent relevant, the impact of the following on the project and/or on the estimation and classification of the Ore Reserves:</p> <ul style="list-style-type: none"> Any identified material naturally occurring risks. The status of material legal agreements and marketing arrangements. The status of governmental agreements and approvals critical to the viability of the project, such as mineral tenement status, and government and statutory approvals. There must be reasonable grounds to expect that all necessary Government approvals will be received within the timeframes anticipated in the Prefeasibility or Feasibility study. Highlight and discuss the materiality of any unresolved matter that is dependent on a third party on which extraction of the reserve is contingent. 	<ul style="list-style-type: none"> A risk review has been completed. No material risks are identified. None known with Beacon intending to sell gold produced from the operation at spot price. The Ore Reserve and associated gold ounces are contained within granted mining tenements. A Project Management Plan and Mining Proposal have been approved by Western Australian DEMIRS (Registration ID 500587). All required studies such as flora and fauna surveys, stygofauna study, hydrogeological investigations, surface water assessment, pit lake modelling and assessment, geotechnical assessments and modelling and mine waste characterisation studies have been completed. No tenure of miscellaneous licenses for the purposes of a private haul road are required Based upon the information provided, the Competent Person sees no reasons for mining not to commence within a within a reasonable timeframe.
Classification	<ul style="list-style-type: none"> The basis for the classification of the Ore Reserves into varying confidence categories. 	<ul style="list-style-type: none"> The Ore Reserve is classified according to Ore Resource classification and includes allowances for modifying factors.

Criteria	JORC Code explanation	Commentary
	<ul style="list-style-type: none"> Whether the result appropriately reflects the Competent Person's view of the deposit. The proportion of Probable Ore Reserves that have been derived from Measured Mineral Resources (if any). 	<ul style="list-style-type: none"> They appropriately reflect the Competent Person's view of the Lady Ida - Iguana gold deposit. Approximately 63% of the of the Ore Reserve is derived from Measured Mineral Resources.
Audits or reviews	<ul style="list-style-type: none"> The results of any audits or reviews of Ore Reserve estimates. 	<ul style="list-style-type: none"> No audits have been carried out.
Discussion of relative accuracy/ confidence	<ul style="list-style-type: none"> Where appropriate a statement of the relative accuracy and confidence level in the Ore Reserve estimate using an approach or procedure deemed appropriate by the Competent Person. For example, the application of statistical or geostatistical procedures to quantify the relative accuracy of the reserve within stated confidence limits, or, if such an approach is not deemed appropriate, a qualitative discussion of the factors which could affect the relative accuracy and confidence of the estimate. The statement should specify whether it relates to global or local estimates, and, if local, state the relevant tonnages, which should be relevant to technical and economic evaluation. Documentation should include assumptions made and the procedures used. Accuracy and confidence discussions should extend to specific discussions of any applied Modifying Factors that may have a material impact on Ore Reserve viability, or for which there are remaining areas of uncertainty at the current study stage. It is recognized that this may not be possible or appropriate in all circumstances. These statements of relative accuracy and confidence of the estimate should be compared with production data, where available. 	<ul style="list-style-type: none"> Confidence levels are in line with gold industry standards for prefeasibility level studies and are in line with Beacon's aim to provide effective prediction for current and future mining projects. No statistical quantification of confidence limits has been applied. Estimates are global. Ore Reserve confidence is reflected by the Proven and Probable categories applied, which in turn reflects the confidence of the Mineral Resource. The mining and ore treatment processes are well-known and use technology and methods which are widely used in the local area. As such, sufficient data is available to generate costing estimates to levels required for prefeasibility studies. The Ore Reserve is most sensitive to; <ul style="list-style-type: none"> a) resource grade accuracy, b) gold price c) metallurgical recovery d) ore haulage and milling costs e) mining costs No current production data is available.