

33m at 7.4 g/t gold intersected below Cinnamon Resource

*Cinnamon strike length doubled with a further intersection of
7m at 29.8 g/t gold*

Catalyst Metals' flagship asset is the 40km long Plutonic Gold Belt in Central Western Australia. This belt currently produces ~100koz pa at an AISC of ~A\$2,300/oz from two mines at Plutonic Main and Plutonic East.

Catalyst is currently bringing three new mines into production – Trident, K2 & Old Highway. Each will be processed through the existing, underutilised and centrally located 2Mtpa CIL processing plant.

Exploration is targeting down dip extensions of each of these deposits.

With the development and exploration of these five deposits, Catalyst aims to increase Reserves and production from 1.5Moz to ±2Moz and ±100koz to ±200koz annually.

In so doing, Catalyst is aiming for Plutonic to have a 10 year mine life - a unique and rare proposition for an underground Western Australian gold mine.

Catalyst also controls a processing plant and +75km of strike length immediately north of the historic +22Moz Bendigo goldfield. Here, Catalyst has delineated a high-grade, greenfield resource at 26 g/t Au. Further discoveries along strike are expected.

Capital Structure

Shares o/s: 256m
Options: 0.5
Rights: 12.3m
Cash & Bullion: A\$227m
Debt: Nil

Reserve and Resource^{1,2}

MRE: 4.2Moz at 3.2g/t Au
ORE: 1.5Moz at 2.6g/t Au

Corporate Details

ASX: CYL
E:investors@catalystmetals.com.au
W:catalystmetals.com.au

- **Cinnamon is an undeveloped gold Resource of 145koz³ and is 25km north-east of the underutilised Plutonic processing plant**
- **During Catalyst's 2023 acquisition of Plutonic, an intercept of 17m at 2.3 g/t gold, situated immediately below this Cinnamon Resource, was identified**
- **The purpose of a recently completed drilling program was to follow-up on this intercept along with testing other targets generated since acquisition. The program yielded four important outcomes:**
 - 1) New target area identified below the existing Resource due to an intercept of 33m at 7.4 g/t;**
 - 2) Potential expansion of the Resource resulting from intersections near to, but outside, the Resource envelope; intersections include 17m at 4.1 g/t and 15m at 4.0 g/t;**
 - 3) New target area identified 250m north-east between the Cinnamon and Cobalt deposits due to intersecting 37m at 4.2 g/t; and**
 - 4) Doubling Cinnamon's known strike length by intersecting 7m at 29.8g/t 1km south-west of the Resource.**
- **This drill program has opened up several new exciting target areas at Cinnamon**
- **Catalyst's drilling to date has focused on Plutonic Main, Plutonic East, Trident, K2 and Old Highway, as they provide a pathway to 200koz of annual gold production from the Plutonic Belt**
- **Until now, Cinnamon has neither been a focus nor included in these future production plans**
- **These results give encouragement for it to be a potential sixth ore source on the Belt**
- **Drill results of note received to date, include:**

| | | |
|---------------------|--------------------|--------------------|
| ○ 33m at 7.4g/t Au | ○ 19m at 3.7g/t Au | ○ 7m at 29.8g/t Au |
| ○ 22m at 14.3g/t Au | ○ 13m at 6.1g/t Au | ○ 15m at 4.0g/t Au |
| ○ 37m at 4.2g/t Au | ○ 18m at 3.6g/t Au | ○ 17m at 4.1g/t Au |
- **All this recent drilling lies outside the existing Resource envelope suggesting the potential for an expansion of Resources along strike and at depth**

Catalyst Metals Limited (**Catalyst** or the **Company**) (ASX:CYL) is pleased to report drill results at the Cinnamon-Cobalt trend, located on the Plutonic Gold Belt.

These results come after a considerable amount of geological work undertaken by the team, since acquisition. Cinnamon, along with other areas of the belt, are gradually being better understood thereby allowing for this higher-risk exploration. These results, after such work, are obviously encouraging for the team and Company.

Catalyst's Managing Director & CEO, James Champion de Crespigny, commented:

"These results are looking interesting. Plutonic has had 14 different owners over the last 30 years. This fragmented ownership history is why exploration has been neglected for so long. The belt requires meaningful exploration drilling to test its potential.

Catalyst published a 10-year production plan last month. Cinnamon did not form part of that plan. It is one of our lower-level exploration targets and yet we are still returning these encouraging results. They go a long way to explaining to our shareholders the potential exploration upside on offer."

Cinnamon-Cobalt Trend

Exploration and mining along the Plutonic belt has focused almost entirely on the mine mafic host rock, home to the Plutonic gold mine. The Belt, however, has demonstrated an ability for different rock types to host gold mineralisation – Plutonic Main (Resource 2.2Moz at 3.5g/t¹) is hosted in the mafic, Trident (Resource 811koz at 5.0g/t²) is hosted in the ultramafic, and deposits on the Cinnamon-Cobalt trend are hosted in a sedimentary (conglomerate) sequence. Catalyst's revitalisation of exploration along the Plutonic Gold Belt opens up alternative, new, exploration horizons.

The Cinnamon Cobalt trend is a 3km trend located 25km north-east of the underutilised Plutonic processing plant. Historical drilling along the trend is limited and has been focused on shallow drilling of only the Cinnamon and Cobalt deposits (Refer Figure 1). It has not sought to understand the full extent of the potential strike length or depth of mineralisation.

The limited drilling at Cinnamon, prior to this drill program, had delineated a Resource of 3.0Mt at 1.5 g/t for 145koz Au (including indicated of 2.1Mt at 1.7g/t Au for 113koz Au). Probable Ore Reserves are 1.4Mt at 1.5g/t for 65koz of gold³.

Drill Program Details

This recent drilling focused on growing the current Resource. Results from this most recent program suggest that there is potential for the Cinnamon Resource to grow both down-dip and along strike:

- Several deeper extensional holes beneath the current Resource have returned high-grade assays including 33m at 7.4g/t Au and 22m at 14.3 g/t Au;
- Similarly, 250m away, a step-out drillhole returned 37m at 4.2 g/t gold, opening another untested area between the Cinnamon and Cobalt deposits; and
- 1km south-west of the Cinnamon deposit, in a previously untested area, wide-spaced reconnaissance drilling returned multiple intercepts including a high-grade intercept of 7m at 29.8g/t Au at 170m depth. This has identified a previously unknown mineralised area, doubling the strike length of the Cinnamon-Cobalt trend.

Historic drilling on the Cinnamon-Cobalt trend was predominantly shallow and ineffective. This drilling has sought to test the deeper horizons across this trend. These high-grade intercepts south-west and north-east of Cinnamon demonstrate that drilling deeper has been effective.

Further drilling will be undertaken to better understand the potential of these new areas.

¹ Refer to ASX announcement 14 October 2025 "Annual Report to shareholders"

² Refer to ASX announcement 4 August 2025 "Trident's indicated Resource doubles"

³ Refer to ASX announcement 10 September 2025 "Plutonic Belt Reserves double, supporting long term growth plans"

Cinnamon as a potential sixth ore source

In September 2025, Catalyst released a 10-year production plan showing growth in gold production from the Plutonic Gold Belt from ± 100 koz pa to ± 200 koz pa. Catalyst will target growing Reserves from the current 1.5Moz to ± 2 Moz to underwrite this 10 years' of gold production at ± 200 koz pa⁴. This production is currently planned to be sourced from five underground mines - Plutonic Main, Plutonic East, Trident, K2 and Old Highway.

Cinnamon has not been included in Catalyst's 10-year production plan. Drilling results such as these are demonstrating the additional potential of the Plutonic gold belt to another ore source.

This announcement has been approved for release by the Board of Directors of Catalyst Metals Limited.

Investors and Media:

Craig Dingley

Catalyst Metals

T: +61 (8) 6324 0900

investors@catalystmetals.com.au

Competent Person's Statement

The information in this announcement that relates to exploration results is based on information compiled by Mr Andrew Finch, BSc, a Competent Person who is a current Member of Australian Institute of Geoscientists (MAIG 3827). Mr Finch, Geology Manager, at Catalyst Metals Ltd has sufficient experience relevant to the style of mineralisation and deposit type under consideration and to the activities being undertaken to qualify as a Competent Person as defined in the 2012 Edition of the Australasian Code for Reporting of Exploration Results, Mineral Resources and Ore Reserves. Mr Finch consents to the inclusion in the report of matters based on his information in the form and context in which it appears.

Compliance Statement

The information in this announcement that relates to a Catalyst estimates of ore reserves and mineral resources are extracted from ASX announcements referenced and available on the Company website www.catalystmetals.com.au and the ASX website (ASX code: CYL).

Catalyst confirms that it is not aware of any new information or data that materially affects the information included in the original market announcements and that all material assumptions and technical parameters underpinning the estimates in the relevant market announcements continue to apply and have not materially changed. The Company confirms that the form and context in which the Competent Persons findings are presented have not been materially modified from the original market announcement

Catalyst confirms that all material assumptions underpinning the production target, or the forecast financial information derived from a production target, in the initial announcement continue to apply and have not materially changed.

⁴ Refer to ASX announcement 10 September 2025 "Plutonic Belt Reserves double, supporting long term growth plans"

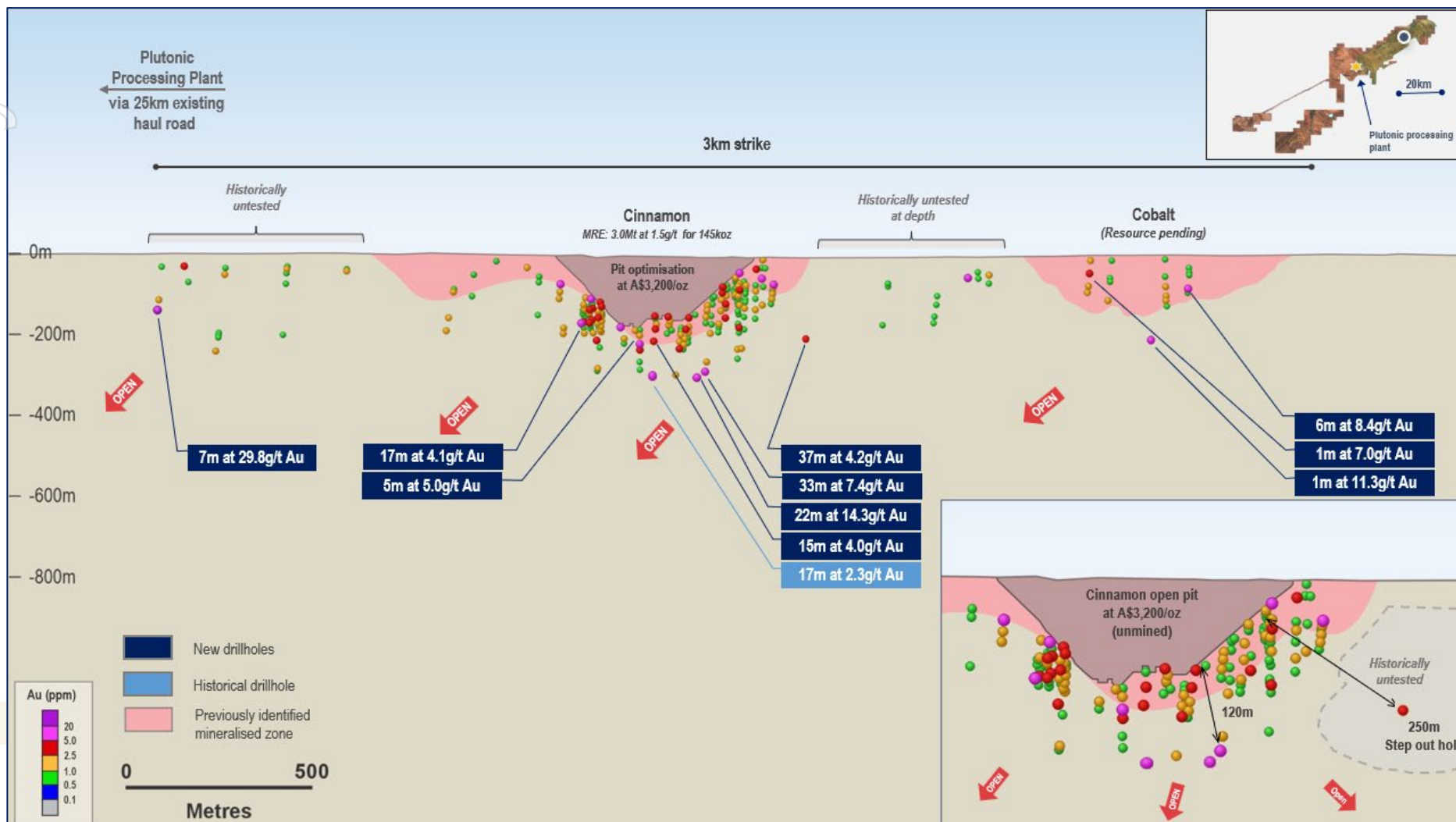


Figure 1: Cinnamon-Cobalt trend highlighting recent drilling by Catalyst

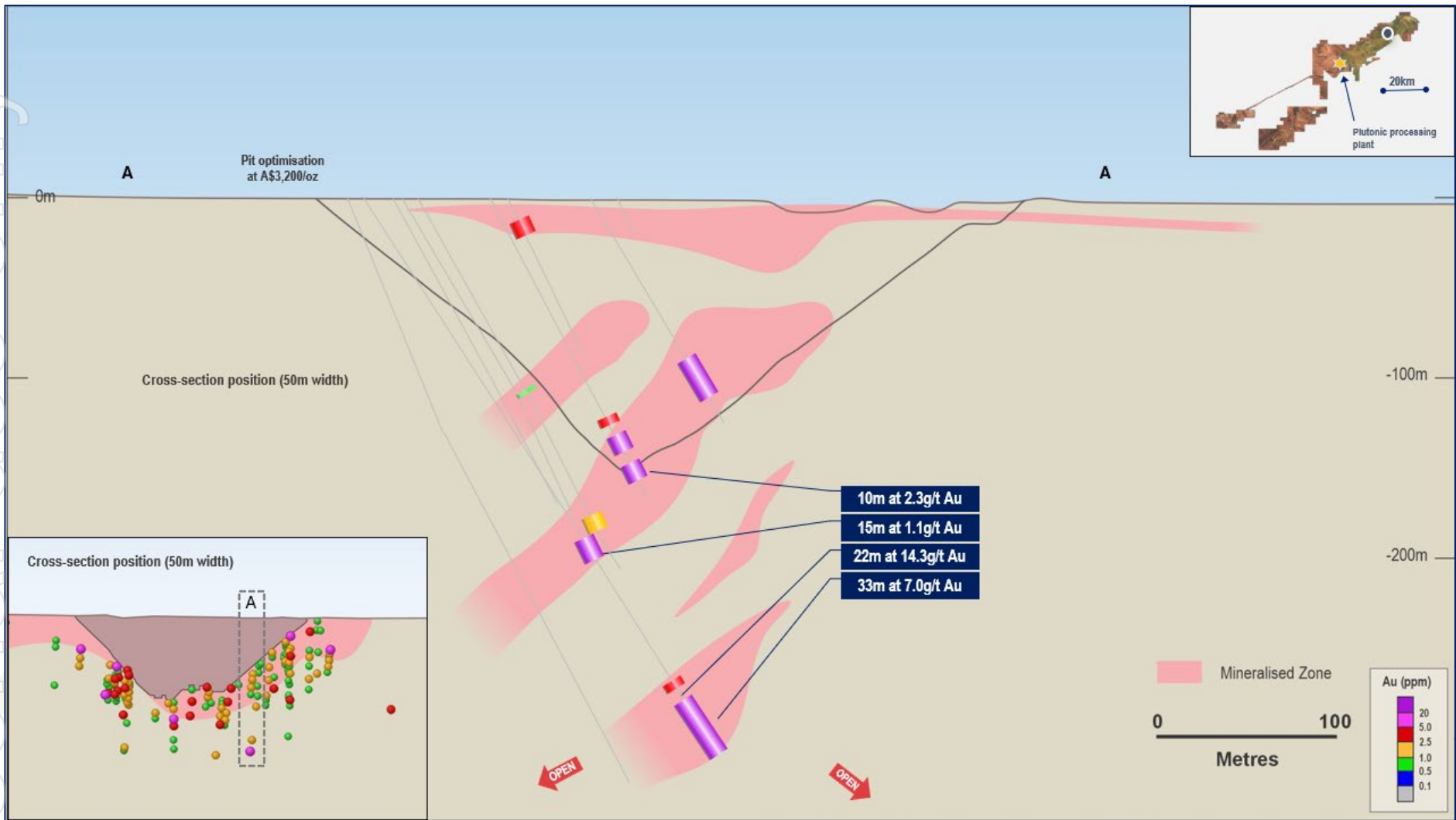


Figure 2: Cinnamon cross-section

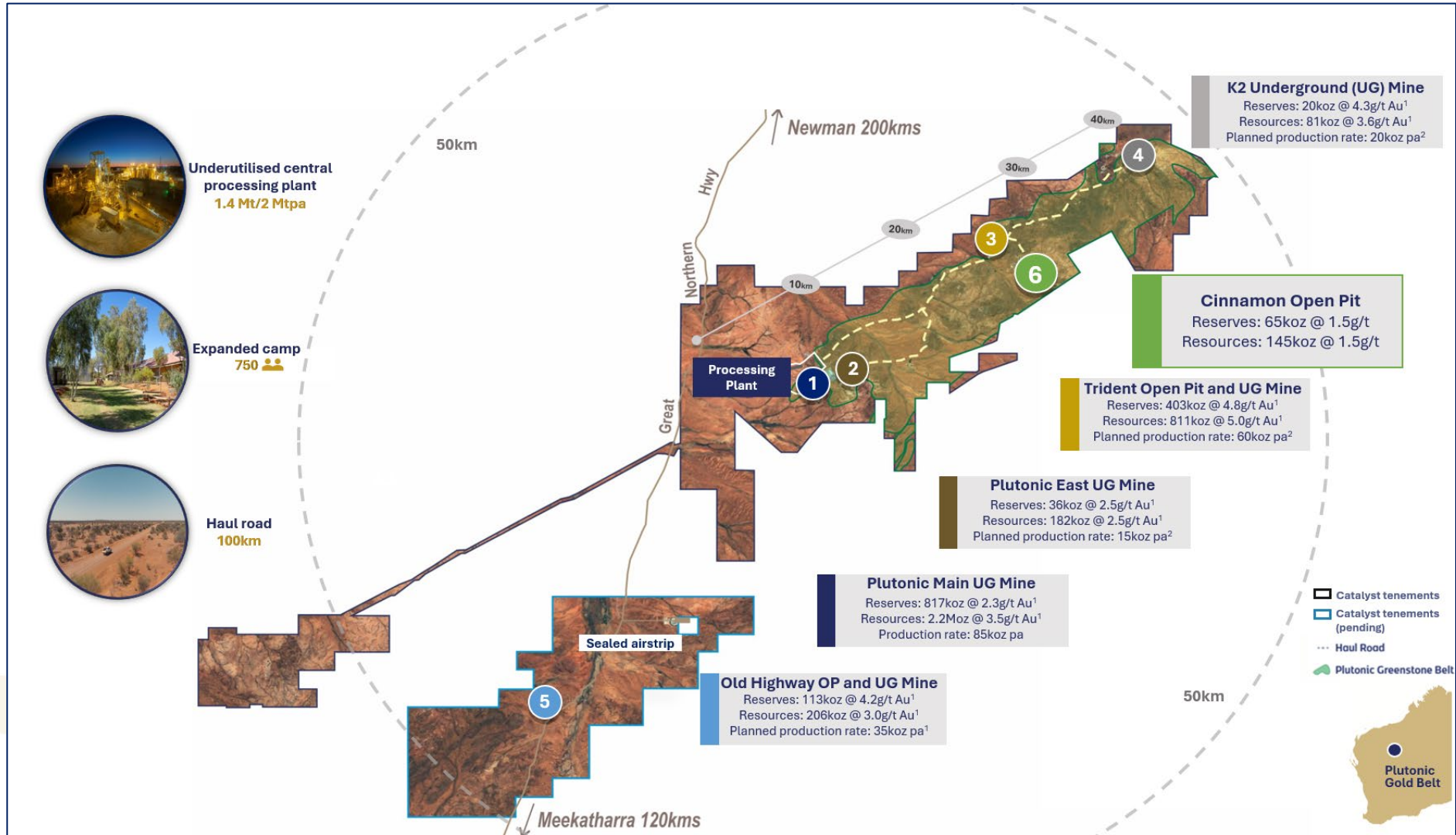


Figure 3: Plutonic Gold Belt showing location of Cinnamon relative to the Plutonic processing facility

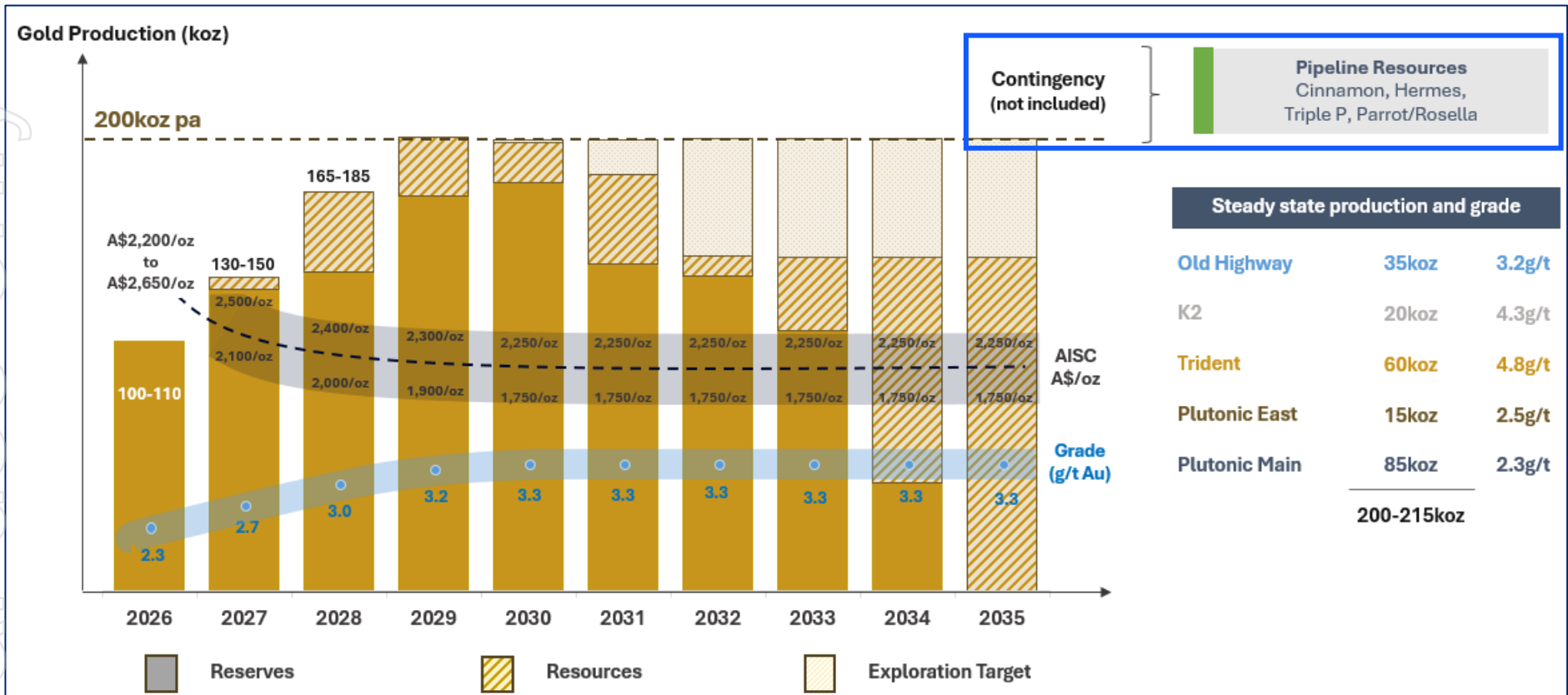


Figure 4: Catalyst’s 10-year production target^{5,6} - Cinnamon as a potential sixth ore source

⁵ Refer to ASX announcement 8 May 2025 “Catalyst to acquire Old Highway Gold Project”

⁶ Refer to ASX announcement 10 September 2024 “Northern Hemisphere Roadshow – Corporate Presentation”

Appendix 1: CINNAMON COBALT DRILLHOLE DATA

| Project | Hole Id | Easting | Northing | RL | Dip (°) | Azimuth (°) | End of Hole (m) | From (m) | To (m) | Downhole Length (m) | Au (g/t) | Gram metres (g*m) |
|----------|---------|---------|----------|-----|---------|-------------|-----------------|----------|--------|---------------------|----------|-------------------|
| CINNAMON | CNR001 | 773287 | 7214005 | 621 | -60.0 | 151.0 | 134 | 60 | 79 | 19 | 1.7 | 32.9 |
| CINNAMON | CNR001 | 773287 | 7214005 | 621 | -60.0 | 151.0 | 134 | 112 | 118 | 6 | 1.3 | 8.0 |
| CINNAMON | CNR002 | 773276 | 7213956 | 621 | -69.7 | 351.1 | 184 | 57 | 58 | 1 | 0.6 | 0.6 |
| CINNAMON | CNR002 | 773276 | 7213956 | 621 | -69.7 | 351.1 | 184 | 63 | 64 | 1 | 0.5 | 0.5 |
| CINNAMON | CNR002 | 773276 | 7213956 | 621 | -69.7 | 351.1 | 184 | 71 | 82 | 11 | 0.8 | 8.6 |
| CINNAMON | CNR002 | 773276 | 7213956 | 621 | -69.7 | 351.1 | 184 | 114 | 115 | 1 | 1.0 | 1.0 |
| CINNAMON | CNR002 | 773276 | 7213956 | 621 | -69.7 | 351.1 | 184 | 119 | 131 | 12 | 2.3 | 27.2 |
| CINNAMON | CNR002 | 773276 | 7213956 | 621 | -69.7 | 351.1 | 184 | 137 | 151 | 14 | 2.3 | 32.1 |
| CINNAMON | CNR003 | 773266 | 7213893 | 621 | -61.1 | 155.9 | 125 | 89 | 97 | 8 | 1.2 | 9.2 |
| CINNAMON | CNR003 | 773266 | 7213893 | 621 | -61.1 | 155.9 | 125 | 103 | 104 | 1 | 1.2 | 1.2 |
| CINNAMON | CNR004 | 773238 | 7213868 | 621 | -61.3 | 156.1 | 160 | 2 | 3 | 1 | 0.6 | 0.6 |
| CINNAMON | CNR005 | 773254 | 7213839 | 621 | -60.9 | 150.7 | 90 | 27 | 28 | 1 | 0.9 | 0.9 |
| CINNAMON | CNR005 | 773254 | 7213839 | 621 | -60.9 | 150.7 | 90 | 36 | 37 | 1 | 1.6 | 1.6 |
| CINNAMON | CNR005 | 773254 | 7213839 | 621 | -60.9 | 150.7 | 90 | 65 | 66 | 1 | 0.7 | 0.7 |
| CINNAMON | CNR006 | 773182 | 7213804 | 621 | -60.4 | 157.0 | 116 | 3 | 4 | 1 | 1.1 | 1.1 |
| CINNAMON | CNR006 | 773182 | 7213804 | 621 | -60.4 | 157.0 | 116 | 57 | 62 | 5 | 0.9 | 4.7 |
| CINNAMON | CNR007 | 773194 | 7213852 | 621 | -61.9 | 152.4 | 120 | 2 | 3 | 1 | 1.2 | 1.2 |
| CINNAMON | CNR007 | 773194 | 7213852 | 621 | -61.9 | 152.4 | 120 | 31 | 32 | 1 | 3.6 | 3.6 |
| CINNAMON | CNR007 | 773194 | 7213852 | 621 | -61.9 | 152.4 | 120 | 87 | 89 | 2 | 1.1 | 2.2 |
| CINNAMON | CNR008 | 773174 | 7213886 | 621 | -61.3 | 155.2 | 140 | 3 | 4 | 1 | 0.6 | 0.6 |
| CINNAMON | CNR008 | 773174 | 7213886 | 621 | -61.3 | 155.2 | 140 | 74 | 75 | 1 | 0.5 | 0.5 |
| CINNAMON | CNR008 | 773174 | 7213886 | 621 | -61.3 | 155.2 | 140 | 76 | 77 | 1 | 0.8 | 0.8 |
| CINNAMON | CNR008 | 773174 | 7213886 | 621 | -61.3 | 155.2 | 140 | 90 | 92 | 2 | 2.3 | 4.7 |
| CINNAMON | CNR008 | 773174 | 7213886 | 621 | -61.3 | 155.2 | 140 | 110 | 111 | 1 | 0.7 | 0.7 |
| CINNAMON | CNR008 | 773174 | 7213886 | 621 | -61.3 | 155.2 | 140 | 114 | 115 | 1 | 1.1 | 1.1 |
| CINNAMON | CNR008 | 773174 | 7213886 | 621 | -61.3 | 155.2 | 140 | 119 | 120 | 1 | 5.0 | 5.0 |
| CINNAMON | CNR009 | 773332 | 7213849 | 620 | -61.9 | 154.2 | 93 | 61 | 63 | 2 | 1.0 | 1.9 |
| CINNAMON | CNR009 | 773332 | 7213849 | 620 | -61.9 | 154.2 | 93 | 86 | 87 | 1 | 0.6 | 0.6 |
| CINNAMON | CNR010 | 773235 | 7214075 | 621 | -62.2 | 154.8 | 172 | 153 | 156 | 3 | 1.0 | 3.1 |
| CINNAMON | CNR010 | 773235 | 7214075 | 621 | -62.2 | 154.8 | 172 | 161 | 171 | 10 | 2.4 | 24.1 |
| CINNAMON | CNR011 | 773469 | 7214122 | 620 | -60.6 | 151.7 | 130 | 19 | 20 | 1 | 0.7 | 0.7 |
| CINNAMON | CNR011 | 773469 | 7214122 | 620 | -60.6 | 151.7 | 130 | 74 | 75 | 1 | 0.5 | 0.5 |
| CINNAMON | CNR011 | 773469 | 7214122 | 620 | -60.6 | 151.7 | 130 | 82 | 87 | 5 | 1.5 | 7.4 |
| CINNAMON | CNR011 | 773469 | 7214122 | 620 | -60.6 | 151.7 | 130 | 93 | 101 | 8 | 1.9 | 15.3 |
| CINNAMON | CNR011 | 773469 | 7214122 | 620 | -60.6 | 151.7 | 130 | 109 | 113 | 4 | 0.7 | 2.7 |
| CINNAMON | CNR012 | 773486 | 7214092 | 620 | -61.5 | 149.6 | 118 | 65 | 66 | 1 | 0.8 | 0.8 |

| Project | Hole Id | Easting | Northing | RL | Dip (°) | Azimuth (°) | End of Hole (m) | From (m) | To (m) | Downhole Length (m) | Au (g/t) | Gram metres (g*m) |
|----------|---------|---------|----------|-----|---------|-------------|-----------------|----------|--------|---------------------|----------|-------------------|
| CINNAMON | CNR012 | 773486 | 7214092 | 620 | -61.5 | 149.6 | 118 | 71 | 73 | 2 | 1.0 | 2.0 |
| CINNAMON | CNR012 | 773486 | 7214092 | 620 | -61.5 | 149.6 | 118 | 88 | 90 | 2 | 0.7 | 1.4 |
| CINNAMON | CNR012 | 773486 | 7214092 | 620 | -61.5 | 149.6 | 118 | 108 | 109 | 1 | 1.7 | 1.7 |
| CINNAMON | CNR012 | 773486 | 7214092 | 620 | -61.5 | 149.6 | 118 | 113 | 114 | 1 | 0.5 | 0.5 |
| CINNAMON | CNR013 | 773861 | 7214597 | 620 | -60.7 | 155.3 | 70 | 52 | 53 | 1 | 7.0 | 7.0 |
| CINNAMON | CNR014 | 773875 | 7214619 | 620 | -61.4 | 149.2 | 68 | 50 | 57 | 7 | 1.0 | 6.9 |
| CINNAMON | CNR015 | 773906 | 7214622 | 620 | -61.0 | 149.2 | 70 | 44 | 45 | 1 | 2.2 | 2.2 |
| CINNAMON | CNR015 | 773906 | 7214622 | 620 | -61.0 | 149.2 | 70 | 68 | 69 | 1 | 0.8 | 0.8 |
| CINNAMON | CNR016 | 773889 | 7214595 | 619 | -61.9 | 149.8 | 50 | 35 | 36 | 1 | 0.6 | 0.6 |
| CINNAMON | CNR017 | 774212 | 7214645 | 620 | -61.1 | 152.5 | 112 | 3 | 6 | 3 | 1.0 | 3.1 |
| CINNAMON | CNR017 | 774212 | 7214645 | 620 | -61.1 | 152.5 | 112 | 44 | 45 | 1 | 2.7 | 2.7 |
| CINNAMON | CNR017 | 774212 | 7214645 | 620 | -61.1 | 152.5 | 112 | 81 | 84 | 3 | 1.1 | 3.3 |
| CINNAMON | CNR017 | 774212 | 7214645 | 620 | -61.1 | 152.5 | 112 | 99 | 100 | 1 | 1.7 | 1.7 |
| CINNAMON | CNR018 | 774195 | 7214677 | 620 | -61.2 | 152.6 | 94 | 77 | 78 | 1 | 0.5 | 0.5 |
| CINNAMON | CNR019 | 774238 | 7214701 | 620 | -60.6 | 154.3 | 140 | 5 | 6 | 1 | 0.5 | 0.5 |
| CINNAMON | CNR019 | 774238 | 7214701 | 620 | -60.6 | 154.3 | 140 | 58 | 59 | 1 | 0.5 | 0.5 |
| CINNAMON | CNR019 | 774238 | 7214701 | 620 | -60.6 | 154.3 | 140 | 66 | 68 | 2 | 0.6 | 1.3 |
| CINNAMON | CNR019 | 774238 | 7214701 | 620 | -60.6 | 154.3 | 140 | 120 | 129 | 9 | 1.1 | 10.1 |
| CINNAMON | CNR020 | 774390 | 7214726 | 620 | -86.6 | 335.4 | 126 | 2 | 3 | 1 | 0.8 | 0.8 |
| CINNAMON | CNR020 | 774390 | 7214726 | 620 | -86.6 | 335.4 | 126 | 39 | 56 | 17 | 0.8 | 13.1 |
| CINNAMON | CNR020 | 774390 | 7214726 | 620 | -86.6 | 335.4 | 126 | 60 | 88 | 28 | 1.3 | 37.0 |
| CINNAMON | CNR020 | 774390 | 7214726 | 620 | -86.6 | 335.4 | 126 | 98 | 100 | 2 | 1.5 | 2.9 |
| CINNAMON | CNR020 | 774390 | 7214726 | 620 | -86.6 | 335.4 | 126 | 111 | 112 | 1 | 1.1 | 1.1 |
| CINNAMON | CNR020 | 774390 | 7214726 | 620 | -86.6 | 335.4 | 126 | 123 | 124 | 1 | 0.7 | 0.7 |
| CINNAMON | CNR021 | 774380 | 7214849 | 621 | -64.9 | 151.8 | 100 | 25 | 27 | 2 | 0.6 | 1.2 |
| CINNAMON | CNR021 | 774380 | 7214849 | 621 | -64.9 | 151.8 | 100 | 37 | 38 | 1 | 0.6 | 0.6 |
| CINNAMON | CNR021 | 774380 | 7214849 | 621 | -64.9 | 151.8 | 100 | 43 | 48 | 5 | 0.8 | 4.1 |
| CINNAMON | CNR021 | 774380 | 7214849 | 621 | -64.9 | 151.8 | 100 | 84 | 90 | 6 | 8.4 | 50.3 |
| CINNAMON | CNR021 | 774380 | 7214849 | 621 | -64.9 | 151.8 | 100 | 95 | 100 | 5 | 1.0 | 4.9 |
| CINNAMON | CNR022 | 774573 | 7215080 | 622 | -61.1 | 151.9 | 147 | 3 | 5 | 2 | 0.9 | 1.7 |
| CINNAMON | CNR022 | 774573 | 7215080 | 622 | -61.1 | 151.9 | 147 | 101 | 103 | 2 | 1.0 | 2.1 |
| CINNAMON | CNR023 | 773235 | 7214023 | 621 | -60.8 | 151.9 | 82 | 81 | 82 | 1 | 0.6 | 0.6 |
| CINNAMON | CNR024 | 773356 | 7213885 | 620 | -90.0 | 1.2 | 108 | 1 | 2 | 1 | 1.0 | 1.0 |
| CINNAMON | CNR024 | 773356 | 7213885 | 620 | -90.0 | 1.2 | 108 | 12 | 13 | 1 | 0.6 | 0.6 |
| CINNAMON | CNR024 | 773356 | 7213885 | 620 | -90.0 | 1.2 | 108 | 56 | 57 | 1 | 0.9 | 0.9 |
| CINNAMON | CNR024 | 773356 | 7213885 | 620 | -90.0 | 1.2 | 108 | 92 | 93 | 1 | 0.5 | 0.5 |
| CINNAMON | CNR024 | 773356 | 7213885 | 620 | -90.0 | 1.2 | 108 | 98 | 108 | 10 | 0.9 | 8.7 |
| CINNAMON | CNR025 | 773314 | 7214043 | 621 | -61.1 | 151.6 | 180 | 77 | 93 | 16 | 1.2 | 18.6 |
| CINNAMON | CNR025 | 773314 | 7214043 | 621 | -61.1 | 151.6 | 180 | 97 | 109 | 12 | 0.8 | 9.6 |

| Project | Hole Id | Easting | Northing | RL | Dip (°) | Azimuth (°) | End of Hole (m) | From (m) | To (m) | Downhole Length (m) | Au (g/t) | Gram metres (g*m) |
|----------|---------|---------|----------|-----|---------|-------------|-----------------|----------|--------|---------------------|----------|-------------------|
| CINNAMON | CNR025 | 773314 | 7214043 | 621 | -61.1 | 151.6 | 180 | 148 | 154 | 6 | 1.9 | 11.6 |
| CINNAMON | CNR026 | 773365 | 7214147 | 621 | -61.3 | 154.6 | 190 | 136 | 141 | 5 | 2.1 | 10.7 |
| CINNAMON | CNR026 | 773365 | 7214147 | 621 | -61.3 | 154.6 | 190 | 147 | 159 | 12 | 1.3 | 16.0 |
| CINNAMON | CNR026 | 773365 | 7214147 | 621 | -61.3 | 154.6 | 190 | 166 | 176 | 10 | 2.3 | 22.9 |
| CINNAMON | CNR026 | 773365 | 7214147 | 621 | -61.3 | 154.6 | 190 | 188 | 189 | 1 | 0.6 | 0.6 |
| CINNAMON | CNR027 | 773181 | 7213894 | 621 | -70.3 | 158.7 | 96 | 35 | 36 | 1 | 1.5 | 1.5 |
| CINNAMON | CNR027 | 773181 | 7213894 | 621 | -70.3 | 158.7 | 96 | 46 | 47 | 1 | 1.4 | 1.4 |
| CINNAMON | CNR028 | 773166 | 7213975 | 621 | -66.8 | 147.7 | 273 | 106 | 107 | 1 | 0.5 | 0.0 |
| CINNAMON | CNR029 | 773276 | 7214035 | 621 | -64.4 | 145.1 | 252 | 66 | 70 | 4 | 2.5 | 10.0 |
| CINNAMON | CNR029 | 773276 | 7214035 | 621 | -64.4 | 145.1 | 252 | 100 | 101 | 1 | 1.0 | 1.0 |
| CINNAMON | CNR029 | 773276 | 7214035 | 621 | -64.4 | 145.1 | 252 | 112 | 124 | 12 | 1.2 | 14.3 |
| CINNAMON | CNR029 | 773276 | 7214035 | 621 | -64.4 | 145.1 | 252 | 150 | 157 | 7 | 0.8 | 5.7 |
| CINNAMON | CNR029 | 773276 | 7214035 | 621 | -64.4 | 145.1 | 252 | 161 | 175 | 14 | 0.8 | 10.5 |
| CINNAMON | CNR030 | 773270 | 7214122 | 622 | -63.1 | 151.0 | 228 | 88 | 90 | 2 | 0.7 | 1.3 |
| CINNAMON | CNR030 | 773270 | 7214122 | 622 | -63.1 | 151.0 | 228 | 180 | 189 | 9 | 2.3 | 20.3 |
| CINNAMON | CNR030 | 773270 | 7214122 | 622 | -63.1 | 151.0 | 228 | 195 | 196 | 1 | 1.1 | 1.1 |
| CINNAMON | CNR030 | 773270 | 7214122 | 622 | -63.1 | 151.0 | 228 | 198 | 203 | 5 | 0.5 | 2.5 |
| CINNAMON | CNR030 | 773270 | 7214122 | 622 | -63.1 | 151.0 | 228 | 223 | 224 | 1 | 0.9 | 0.9 |
| CINNAMON | CNR031 | 773464 | 7214129 | 620 | -80.6 | 146.1 | 195 | 35 | 36 | 1 | 7.1 | 7.1 |
| CINNAMON | CNR031 | 773464 | 7214129 | 620 | -80.6 | 146.1 | 195 | 67 | 68 | 1 | 1.2 | 1.2 |
| CINNAMON | CNR031 | 773464 | 7214129 | 620 | -80.6 | 146.1 | 195 | 82 | 85 | 3 | 3.2 | 9.5 |
| CINNAMON | CNR031 | 773464 | 7214129 | 620 | -80.6 | 146.1 | 195 | 105 | 106 | 1 | 0.5 | 0.5 |
| CINNAMON | CNR031 | 773464 | 7214129 | 620 | -80.6 | 146.1 | 195 | 118 | 123 | 5 | 1.8 | 9.2 |
| CINNAMON | CNR031 | 773464 | 7214129 | 620 | -80.6 | 146.1 | 195 | 141 | 149 | 8 | 1.0 | 7.6 |
| CINNAMON | CNR031 | 773464 | 7214129 | 620 | -80.6 | 146.1 | 195 | 181 | 182 | 1 | 4.3 | 4.3 |
| CINNAMON | CNR031 | 773464 | 7214129 | 620 | -80.6 | 146.1 | 195 | 190 | 194 | 4 | 0.9 | 3.4 |
| CINNAMON | CNR032 | 773432 | 7214102 | 621 | -66.4 | 140.6 | 195 | 74 | 75 | 1 | 0.7 | 0.7 |
| CINNAMON | CNR032 | 773432 | 7214102 | 621 | -66.4 | 140.6 | 195 | 83 | 90 | 7 | 0.5 | 3.6 |
| CINNAMON | CNR032 | 773432 | 7214102 | 621 | -66.4 | 140.6 | 195 | 93 | 94 | 1 | 1.0 | 1.0 |
| CINNAMON | CNR032 | 773432 | 7214102 | 621 | -66.4 | 140.6 | 195 | 147 | 148 | 1 | 0.5 | 0.5 |
| CINNAMON | CNR032 | 773432 | 7214102 | 621 | -66.4 | 140.6 | 195 | 173 | 181 | 8 | 4.2 | 33.7 |
| CINNAMON | CNR033 | 772900 | 7214011 | 624 | -67.8 | 137.5 | 210 | 158 | 159 | 1 | 0.8 | 0.8 |
| CINNAMON | CNR034 | 773013 | 7214093 | 624 | -62.7 | 160.2 | 222 | 146 | 147 | 1 | 0.8 | 0.8 |
| CINNAMON | CNR034 | 773013 | 7214093 | 624 | -62.7 | 160.2 | 222 | 154 | 155 | 1 | 1.1 | 1.1 |
| CINNAMON | CNR034 | 773013 | 7214093 | 624 | -62.7 | 160.2 | 222 | 180 | 184 | 4 | 5.3 | 21.0 |
| CINNAMON | CNR035 | 773085 | 7214143 | 624 | -61.8 | 156.2 | 222 | 58 | 59 | 1 | 0.6 | 0.6 |
| CINNAMON | CNR035 | 773085 | 7214143 | 624 | -61.8 | 156.2 | 222 | 61 | 62 | 1 | 0.7 | 0.7 |
| CINNAMON | CNR035 | 773085 | 7214143 | 624 | -61.8 | 156.2 | 222 | 135 | 138 | 3 | 0.7 | 2.0 |
| CINNAMON | CNR036 | 773154 | 7214182 | 624 | -60.0 | 138.5 | 216 | 37 | 38 | 1 | 0.7 | 0.7 |

| Project | Hole Id | Easting | Northing | RL | Dip (°) | Azimuth (°) | End of Hole (m) | From (m) | To (m) | Downhole Length (m) | Au (g/t) | Gram metres (g*m) |
|----------|---------|---------|----------|-----|---------|-------------|-----------------|----------|--------|---------------------|----------|-------------------|
| CINNAMON | CNR036 | 773154 | 7214182 | 624 | -60.0 | 138.5 | 216 | 47 | 48 | 1 | 0.7 | 0.7 |
| CINNAMON | CNR036 | 773154 | 7214182 | 624 | -60.0 | 138.5 | 216 | 80 | 81 | 1 | 1.8 | 1.8 |
| CINNAMON | CNR036 | 773154 | 7214182 | 624 | -60.0 | 138.5 | 216 | 105 | 108 | 3 | 1.4 | 4.3 |
| CINNAMON | CNR037 | 773256 | 7214236 | 623 | -59.4 | 150.8 | 216 | 164 | 167 | 3 | 0.7 | 2.2 |
| CINNAMON | CNR038 | 773345 | 7214282 | 622 | -59.9 | 149.7 | 216 | 39 | 40 | 1 | 0.5 | 0.5 |
| CINNAMON | CNR038 | 773345 | 7214282 | 622 | -59.9 | 149.7 | 216 | 53 | 54 | 1 | 1.3 | 1.3 |
| CINNAMON | CNR038 | 773345 | 7214282 | 622 | -59.9 | 149.7 | 216 | 88 | 89 | 1 | 0.7 | 0.7 |
| CINNAMON | CNR038 | 773345 | 7214282 | 622 | -59.9 | 149.7 | 216 | 95 | 97 | 2 | 0.7 | 1.3 |
| CINNAMON | CNR039 | 773043 | 7213838 | 622 | -60.7 | 149.8 | 196 | 55 | 56 | 1 | 0.8 | 0.8 |
| CINNAMON | CNR039 | 773043 | 7213838 | 622 | -60.7 | 149.8 | 196 | 70 | 71 | 1 | 1.0 | 1.0 |
| CINNAMON | CNR040 | 773105 | 7213848 | 622 | -59.8 | 149.4 | 150 | 77 | 79 | 2 | 8.6 | 17.2 |
| CINNAMON | CNR040 | 773105 | 7213848 | 622 | -59.8 | 149.4 | 150 | 101 | 103 | 2 | 1.5 | 3.0 |
| CINNAMON | CNR040 | 773105 | 7213848 | 622 | -59.8 | 149.4 | 150 | 117 | 127 | 10 | 1.4 | 13.9 |
| CINNAMON | CNR042 | 773135 | 7213918 | 622 | -60.6 | 149.3 | 244 | 116 | 120 | 4 | 2.3 | 9.3 |
| CINNAMON | CNR042 | 773135 | 7213918 | 622 | -60.6 | 149.3 | 244 | 151 | 156 | 5 | 2.0 | 10.0 |
| CINNAMON | CNR042 | 773135 | 7213918 | 622 | -60.6 | 149.3 | 244 | 174 | 177 | 3 | 1.0 | 2.9 |
| CINNAMON | CNR042 | 773135 | 7213918 | 622 | -60.6 | 149.3 | 244 | 185 | 200 | 15 | 2.8 | 41.6 |
| CINNAMON | CNR042 | 773135 | 7213918 | 622 | -60.6 | 149.3 | 244 | 210 | 211 | 1 | 0.8 | 0.8 |
| CINNAMON | CNR043 | 773160 | 7213913 | 621 | -60.4 | 149.6 | 217 | 67 | 78 | 11 | 1.5 | 16.2 |
| CINNAMON | CNR043 | 773160 | 7213913 | 621 | -60.4 | 149.6 | 217 | 118 | 121 | 3 | 6.4 | 19.1 |
| CINNAMON | CNR043 | 773160 | 7213913 | 621 | -60.4 | 149.6 | 217 | 137 | 142 | 5 | 0.8 | 4.1 |
| CINNAMON | CNR043 | 773160 | 7213913 | 621 | -60.4 | 149.6 | 217 | 148 | 154 | 6 | 2.6 | 15.6 |
| CINNAMON | CNR043 | 773160 | 7213913 | 621 | -60.4 | 149.6 | 217 | 160 | 163 | 3 | 1.3 | 3.9 |
| CINNAMON | CNR043 | 773160 | 7213913 | 621 | -60.4 | 149.6 | 217 | 167 | 168 | 1 | 0.6 | 0.6 |
| CINNAMON | CNR043 | 773160 | 7213913 | 621 | -60.4 | 149.6 | 217 | 180 | 198 | 18 | 3.7 | 66.4 |
| CINNAMON | CNR044 | 773145 | 7213937 | 621 | -60.7 | 149.6 | 268 | 56 | 57 | 1 | 0.8 | 0.8 |
| CINNAMON | CNR044 | 773145 | 7213937 | 621 | -60.7 | 149.6 | 268 | 134 | 135 | 1 | 0.7 | 0.7 |
| CINNAMON | CNR044 | 773145 | 7213937 | 621 | -60.7 | 149.6 | 268 | 139 | 140 | 1 | 0.9 | 0.9 |
| CINNAMON | CNR044 | 773145 | 7213937 | 621 | -60.7 | 149.6 | 268 | 150 | 152 | 2 | 3.1 | 6.3 |
| CINNAMON | CNR044 | 773145 | 7213937 | 621 | -60.7 | 149.6 | 268 | 178 | 195 | 17 | 4.1 | 69.4 |
| CINNAMON | CNR044 | 773145 | 7213937 | 621 | -60.7 | 149.6 | 268 | 199 | 200 | 1 | 0.6 | 0.6 |
| CINNAMON | CNR044 | 773145 | 7213937 | 621 | -60.7 | 149.6 | 268 | 204 | 221 | 17 | 1.0 | 16.7 |
| CINNAMON | CNR045 | 773176 | 7213926 | 621 | -59.5 | 147.5 | 217 | 64 | 70 | 6 | 0.7 | 4.4 |
| CINNAMON | CNR045 | 773176 | 7213926 | 621 | -59.5 | 147.5 | 217 | 91 | 96 | 5 | 1.0 | 4.8 |
| CINNAMON | CNR045 | 773176 | 7213926 | 621 | -59.5 | 147.5 | 217 | 155 | 166 | 11 | 2.5 | 27.5 |
| CINNAMON | CNR045 | 773176 | 7213926 | 621 | -59.5 | 147.5 | 217 | 173 | 184 | 11 | 4.1 | 45.5 |
| CINNAMON | CNR045 | 773176 | 7213926 | 621 | -59.5 | 147.5 | 217 | 192 | 194 | 2 | 1.2 | 2.4 |
| CINNAMON | CNR047 | 773164 | 7213947 | 622 | -60.1 | 147.9 | 274 | 2 | 3 | 1 | 0.8 | 0.8 |
| CINNAMON | CNR047 | 773164 | 7213947 | 622 | -60.1 | 147.9 | 274 | 92 | 93 | 1 | 2.5 | 2.5 |

| Project | Hole Id | Easting | Northing | RL | Dip (°) | Azimuth (°) | End of Hole (m) | From (m) | To (m) | Downhole Length (m) | Au (g/t) | Gram metres (g*m) |
|----------|---------|---------|----------|-----|---------|-------------|-----------------|----------|--------|---------------------|----------|-------------------|
| CINNAMON | CNR047 | 773164 | 7213947 | 622 | -60.1 | 147.9 | 274 | 105 | 106 | 1 | 0.7 | 0.7 |
| CINNAMON | CNR047 | 773164 | 7213947 | 622 | -60.1 | 147.9 | 274 | 115 | 120 | 5 | 4.3 | 21.6 |
| CINNAMON | CNR047 | 773164 | 7213947 | 622 | -60.1 | 147.9 | 274 | 125 | 143 | 18 | 2.6 | 46.3 |
| CINNAMON | CNR047 | 773164 | 7213947 | 622 | -60.1 | 147.9 | 274 | 153 | 178 | 25 | 1.4 | 35.8 |
| CINNAMON | CNR047 | 773164 | 7213947 | 622 | -60.1 | 147.9 | 274 | 182 | 199 | 17 | 1.5 | 25.8 |
| CINNAMON | CNR047 | 773164 | 7213947 | 622 | -60.1 | 147.9 | 274 | 208 | 214 | 6 | 0.9 | 5.5 |
| CINNAMON | CNR047 | 773164 | 7213947 | 622 | -60.1 | 147.9 | 274 | 257 | 258 | 1 | 3.0 | 3.0 |
| CINNAMON | CNR047A | 773165 | 7213945 | 622 | -60.3 | 150.1 | 263 | 2 | 3 | 1 | 0.5 | 0.5 |
| CINNAMON | CNR047A | 773165 | 7213945 | 622 | -60.3 | 150.1 | 263 | 60 | 61 | 1 | 1.2 | 1.2 |
| CINNAMON | CNR047A | 773165 | 7213945 | 622 | -60.3 | 150.1 | 263 | 66 | 67 | 1 | 0.6 | 0.6 |
| CINNAMON | CNR047A | 773165 | 7213945 | 622 | -60.3 | 150.1 | 263 | 91 | 97 | 6 | 0.9 | 5.3 |
| CINNAMON | CNR047A | 773165 | 7213945 | 622 | -60.3 | 150.1 | 263 | 113 | 114 | 1 | 0.7 | 0.7 |
| CINNAMON | CNR047A | 773165 | 7213945 | 622 | -60.3 | 150.1 | 263 | 123 | 130 | 7 | 0.9 | 6.6 |
| CINNAMON | CNR047A | 773165 | 7213945 | 622 | -60.3 | 150.1 | 263 | 134 | 149 | 15 | 3.2 | 48.5 |
| CINNAMON | CNR047A | 773165 | 7213945 | 622 | -60.3 | 150.1 | 263 | 168 | 179 | 11 | 1.2 | 12.8 |
| CINNAMON | CNR047A | 773165 | 7213945 | 622 | -60.3 | 150.1 | 263 | 184 | 189 | 5 | 1.7 | 8.5 |
| CINNAMON | CNR047A | 773165 | 7213945 | 622 | -60.3 | 150.1 | 263 | 202 | 207 | 5 | 1.8 | 9.2 |
| CINNAMON | CNR047A | 773165 | 7213945 | 622 | -60.3 | 150.1 | 263 | 213 | 218 | 5 | 1.1 | 5.4 |
| CINNAMON | CNR048 | 773153 | 7213981 | 622 | -60.8 | 155.2 | 340 | 121 | 124 | 3 | 1.7 | 5.2 |
| CINNAMON | CNR048 | 773153 | 7213981 | 622 | -60.8 | 155.2 | 340 | 163 | 165 | 2 | 0.7 | 1.4 |
| CINNAMON | CNR048 | 773153 | 7213981 | 622 | -60.8 | 155.2 | 340 | 167 | 168 | 1 | 0.5 | 0.5 |
| CINNAMON | CNR048 | 773153 | 7213981 | 622 | -60.8 | 155.2 | 340 | 205 | 206 | 1 | 2.0 | 2.0 |
| CINNAMON | CNR048 | 773153 | 7213981 | 622 | -60.8 | 155.2 | 340 | 211 | 220 | 9 | 1.5 | 13.1 |
| CINNAMON | CNR048 | 773153 | 7213981 | 622 | -60.8 | 155.2 | 340 | 262 | 263 | 1 | 0.6 | 0.6 |
| CINNAMON | CNR048 | 773153 | 7213981 | 622 | -60.8 | 155.2 | 340 | 325 | 326 | 1 | 2.2 | 2.2 |
| CINNAMON | CNR048 | 773153 | 7213981 | 622 | -60.8 | 155.2 | 340 | 332 | 333 | 1 | 0.8 | 0.8 |
| CINNAMON | CNR050 | 773194 | 7214014 | 622 | -60.7 | 149.4 | 310 | 51 | 52 | 1 | 1.2 | 1.2 |
| CINNAMON | CNR050 | 773194 | 7214014 | 622 | -60.7 | 149.4 | 310 | 76 | 77 | 1 | 1.5 | 1.5 |
| CINNAMON | CNR050 | 773194 | 7214014 | 622 | -60.7 | 149.4 | 310 | 82 | 84 | 2 | 10.5 | 20.9 |
| CINNAMON | CNR050 | 773194 | 7214014 | 622 | -60.7 | 149.4 | 310 | 132 | 133 | 1 | 2.6 | 2.6 |
| CINNAMON | CNR050 | 773194 | 7214014 | 622 | -60.7 | 149.4 | 310 | 139 | 141 | 2 | 1.3 | 2.6 |
| CINNAMON | CNR050 | 773194 | 7214014 | 622 | -60.7 | 149.4 | 310 | 159 | 179 | 20 | 1.2 | 24.4 |
| CINNAMON | CNR050 | 773194 | 7214014 | 622 | -60.7 | 149.4 | 310 | 237 | 238 | 1 | 2.1 | 2.1 |
| CINNAMON | CNR050 | 773194 | 7214014 | 622 | -60.7 | 149.4 | 310 | 251 | 252 | 1 | 0.6 | 0.6 |
| CINNAMON | CNR051 | 773215 | 7214017 | 621 | -61.1 | 150.3 | 373 | 72 | 73 | 1 | 3.5 | 3.5 |
| CINNAMON | CNR051 | 773215 | 7214017 | 621 | -61.1 | 150.3 | 373 | 87 | 88 | 1 | 0.9 | 0.9 |
| CINNAMON | CNR051 | 773215 | 7214017 | 621 | -61.1 | 150.3 | 373 | 112 | 123 | 11 | 0.8 | 9.0 |
| CINNAMON | CNR051 | 773215 | 7214017 | 621 | -61.1 | 150.3 | 373 | 127 | 128 | 1 | 4.7 | 4.7 |
| CINNAMON | CNR051 | 773215 | 7214017 | 621 | -61.1 | 150.3 | 373 | 141 | 156 | 15 | 0.9 | 13.7 |

| Project | Hole Id | Easting | Northing | RL | Dip (°) | Azimuth (°) | End of Hole (m) | From (m) | To (m) | Downhole Length (m) | Au (g/t) | Gram metres (g*m) |
|----------|---------|---------|----------|-----|---------|-------------|-----------------|----------|--------|---------------------|----------|-------------------|
| CINNAMON | CNR051 | 773215 | 7214017 | 621 | -61.1 | 150.3 | 373 | 161 | 174 | 13 | 6.1 | 79.7 |
| CINNAMON | CNR051 | 773215 | 7214017 | 621 | -61.1 | 150.3 | 373 | 180 | 183 | 3 | 2.0 | 6.0 |
| CINNAMON | CNR052 | 773233 | 7214025 | 622 | -59.1 | 151.5 | 246 | 76 | 77 | 1 | 0.7 | 0.7 |
| CINNAMON | CNR052 | 773233 | 7214025 | 622 | -59.1 | 151.5 | 246 | 103 | 118 | 15 | 1.7 | 24.8 |
| CINNAMON | CNR052 | 773233 | 7214025 | 622 | -59.1 | 151.5 | 246 | 122 | 124 | 2 | 1.2 | 2.4 |
| CINNAMON | CNR052 | 773233 | 7214025 | 622 | -59.1 | 151.5 | 246 | 154 | 160 | 6 | 1.2 | 6.9 |
| CINNAMON | CNR052 | 773233 | 7214025 | 622 | -59.1 | 151.5 | 246 | 164 | 178 | 14 | 2.1 | 29.1 |
| CINNAMON | CNR052 | 773233 | 7214025 | 622 | -59.1 | 151.5 | 246 | 185 | 193 | 8 | 1.2 | 9.6 |
| CINNAMON | CNR052 | 773233 | 7214025 | 622 | -59.1 | 151.5 | 246 | 206 | 213 | 7 | 0.9 | 6.3 |
| CINNAMON | CNR052 | 773233 | 7214025 | 622 | -59.1 | 151.5 | 246 | 217 | 227 | 10 | 1.1 | 11.2 |
| CINNAMON | CNR053 | 773196 | 7214062 | 622 | -61.7 | 144.8 | 370 | 67 | 68 | 1 | 0.5 | 0.5 |
| CINNAMON | CNR053 | 773196 | 7214062 | 622 | -61.7 | 144.8 | 370 | 181 | 191 | 10 | 1.2 | 11.8 |
| CINNAMON | CNR053 | 773196 | 7214062 | 622 | -61.7 | 144.8 | 370 | 203 | 213 | 10 | 0.8 | 8.3 |
| CINNAMON | CNR053 | 773196 | 7214062 | 622 | -61.7 | 144.8 | 370 | 223 | 225 | 2 | 1.0 | 2.0 |
| CINNAMON | CNR053 | 773196 | 7214062 | 622 | -61.7 | 144.8 | 370 | 247 | 252 | 5 | 5.0 | 25.2 |
| CINNAMON | CNR053 | 773196 | 7214062 | 622 | -61.7 | 144.8 | 370 | 266 | 267 | 1 | 4.3 | 4.3 |
| CINNAMON | CNR053 | 773196 | 7214062 | 622 | -61.7 | 144.8 | 370 | 302 | 303 | 1 | 0.7 | 0.7 |
| CINNAMON | CNR053 | 773196 | 7214062 | 622 | -61.7 | 144.8 | 370 | 326 | 327 | 1 | 0.6 | 0.6 |
| CINNAMON | CNR054 | 773248 | 7214079 | 622 | -60.3 | 151.5 | 202 | 146 | 147 | 1 | 0.6 | 0.6 |
| CINNAMON | CNR054 | 773248 | 7214079 | 622 | -60.3 | 151.5 | 202 | 166 | 170 | 4 | 4.2 | 16.7 |
| CINNAMON | CNR054 | 773248 | 7214079 | 622 | -60.3 | 151.5 | 202 | 174 | 178 | 4 | 0.5 | 2.0 |
| CINNAMON | CNR055 | 773244 | 7214086 | 622 | -64.2 | 149.0 | 304 | 75 | 76 | 1 | 0.8 | 0.8 |
| CINNAMON | CNR055 | 773244 | 7214086 | 622 | -64.2 | 149.0 | 304 | 158 | 163 | 5 | 0.5 | 2.7 |
| CINNAMON | CNR055 | 773244 | 7214086 | 622 | -64.2 | 149.0 | 304 | 194 | 209 | 15 | 4.1 | 61.8 |
| CINNAMON | CNR055 | 773244 | 7214086 | 622 | -64.2 | 149.0 | 304 | 237 | 238 | 1 | 4.0 | 4.0 |
| CINNAMON | CNR056 | 773265 | 7214142 | 622 | -65.3 | 153.2 | 306 | 1 | 3 | 2 | 0.6 | 1.1 |
| CINNAMON | CNR056 | 773265 | 7214142 | 622 | -65.3 | 153.2 | 306 | 58 | 59 | 1 | 5.5 | 5.5 |
| CINNAMON | CNR056 | 773265 | 7214142 | 622 | -65.3 | 153.2 | 306 | 200 | 208 | 8 | 0.6 | 4.6 |
| CINNAMON | CNR057 | 773258 | 7214182 | 622 | -60.3 | 151.0 | 372 | 28 | 29 | 1 | 1.6 | 1.6 |
| CINNAMON | CNR057 | 773258 | 7214182 | 622 | -60.3 | 151.0 | 372 | 37 | 38 | 1 | 1.0 | 1.0 |
| CINNAMON | CNR057 | 773258 | 7214182 | 622 | -60.3 | 151.0 | 372 | 64 | 75 | 11 | 0.6 | 7.0 |
| CINNAMON | CNR057 | 773258 | 7214182 | 622 | -60.3 | 151.0 | 372 | 143 | 147 | 4 | 1.0 | 4.0 |
| CINNAMON | CNR057 | 773258 | 7214182 | 622 | -60.3 | 151.0 | 372 | 212 | 213 | 1 | 0.7 | 0.7 |
| CINNAMON | CNR057 | 773258 | 7214182 | 622 | -60.3 | 151.0 | 372 | 222 | 223 | 1 | 0.6 | 0.6 |
| CINNAMON | CNR057 | 773258 | 7214182 | 622 | -60.3 | 151.0 | 372 | 230 | 231 | 1 | 2.0 | 2.0 |
| CINNAMON | CNR057 | 773258 | 7214182 | 622 | -60.3 | 151.0 | 372 | 252 | 256 | 4 | 1.4 | 5.7 |
| CINNAMON | CNR057 | 773258 | 7214182 | 622 | -60.3 | 151.0 | 372 | 272 | 281 | 9 | 3.3 | 30.1 |
| CINNAMON | CNR057 | 773258 | 7214182 | 622 | -60.3 | 151.0 | 372 | 355 | 366 | 11 | 1.2 | 13.2 |
| CINNAMON | CNR058 | 773303 | 7214141 | 622 | -60.2 | 150.0 | 264 | 4 | 6 | 2 | 0.8 | 1.5 |

| Project | Hole Id | Easting | Northing | RL | Dip (°) | Azimuth (°) | End of Hole (m) | From (m) | To (m) | Downhole Length (m) | Au (g/t) | Gram metres (g*m) |
|----------|---------|-----------------|----------|-----|---------|-------------|-----------------|------------|------------|---------------------|-------------|-------------------|
| CINNAMON | CNR058 | 773303 | 7214141 | 622 | -60.2 | 150.0 | 264 | 58 | 59 | 1 | 0.6 | 0.6 |
| CINNAMON | CNR058 | 773303 | 7214141 | 622 | -60.2 | 150.0 | 264 | 101 | 102 | 1 | 0.9 | 0.9 |
| CINNAMON | CNR058 | 773303 | 7214141 | 622 | -60.2 | 150.0 | 264 | 108 | 110 | 2 | 1.2 | 2.4 |
| CINNAMON | CNR058 | 773303 | 7214141 | 622 | -60.2 | 150.0 | 264 | 175 | 176 | 1 | 3.2 | 3.2 |
| CINNAMON | CNR058 | 773303 | 7214141 | 622 | -60.2 | 150.0 | 264 | 180 | 182 | 2 | 3.0 | 5.9 |
| CINNAMON | CNR058 | 773303 | 7214141 | 622 | -60.2 | 150.0 | 264 | 205 | 209 | 4 | 1.0 | 4.1 |
| CINNAMON | CNR058 | 773303 | 7214141 | 622 | -60.2 | 150.0 | 264 | 215 | 223 | 8 | 1.9 | 15.5 |
| CINNAMON | CNR058 | 773303 | 7214141 | 622 | -60.2 | 150.0 | 264 | 241 | 242 | 1 | 0.8 | 0.8 |
| CINNAMON | CNR058 | 773303 | 7214141 | 622 | -60.2 | 150.0 | 264 | 246 | 260 | 14 | 0.7 | 10.2 |
| CINNAMON | CNR060 | 773291 | 7214162 | 622 | -60.3 | 150.8 | 267 | 1 | 2 | 1 | 0.5 | 0.5 |
| CINNAMON | CNR060 | 773291 | 7214162 | 622 | -60.3 | 150.8 | 267 | 21 | 22 | 1 | 2.3 | 2.3 |
| CINNAMON | CNR060 | 773291 | 7214162 | 622 | -60.3 | 150.8 | 267 | 57 | 58 | 1 | 0.6 | 0.6 |
| CINNAMON | CNR060 | 773291 | 7214162 | 622 | -60.3 | 150.8 | 267 | 93 | 94 | 1 | 0.8 | 0.8 |
| CINNAMON | CNR060 | 773291 | 7214162 | 622 | -60.3 | 150.8 | 267 | 107 | 108 | 1 | 0.7 | 0.7 |
| CINNAMON | CNR060 | 773291 | 7214162 | 622 | -60.3 | 150.8 | 267 | 207 | 209 | 2 | 3.3 | 6.6 |
| CINNAMON | CNR060 | 773291 | 7214162 | 622 | -60.3 | 150.8 | 267 | 234 | 239 | 5 | 1.7 | 8.7 |
| CINNAMON | CNR060 | 773291 | 7214162 | 622 | -60.3 | 150.8 | 267 | 249 | 260 | 11 | 1.3 | 14.4 |
| CINNAMON | CNR060 | 773291 | 7214162 | 622 | -60.3 | 150.8 | 267 | 265 | 266 | 1 | 0.7 | 0.7 |
| CINNAMON | CNR062 | 773353 | 7214179 | 622 | -59.9 | 149.1 | 351 | 58 | 59 | 1 | 1.3 | 1.3 |
| CINNAMON | CNR062 | 773353 | 7214179 | 622 | -59.9 | 149.1 | 351 | 83 | 87 | 4 | 0.6 | 2.3 |
| CINNAMON | CNR062 | 773353 | 7214179 | 622 | -59.9 | 149.1 | 351 | 111 | 117 | 6 | 0.6 | 3.4 |
| CINNAMON | CNR062 | 773353 | 7214179 | 622 | -59.9 | 149.1 | 351 | 132 | 133 | 1 | 0.9 | 0.9 |
| CINNAMON | CNR062 | 773353 | 7214179 | 622 | -59.9 | 149.1 | 351 | 165 | 166 | 1 | 0.5 | 0.5 |
| CINNAMON | CNR062 | 773353 | 7214179 | 622 | -59.9 | 149.1 | 351 | 309 | 331 | 22 | 14.3 | 314.4 |
| CINNAMON | CNR062 | <i>includes</i> | | | | | | 317 | 323 | 6 | 39.4 | 236.4 |
| CINNAMON | CNR062 | 773353 | 7214179 | 622 | -59.9 | 149.1 | 351 | 335 | 345 | 10 | 1.6 | 15.6 |
| CINNAMON | CNR063 | 773344 | 7214196 | 621 | -60.5 | 151.6 | 355 | 50 | 51 | 1 | 0.8 | 0.8 |
| CINNAMON | CNR063 | 773344 | 7214196 | 621 | -60.5 | 151.6 | 355 | 110 | 111 | 1 | 0.5 | 0.5 |
| CINNAMON | CNR063 | 773344 | 7214196 | 621 | -60.5 | 151.6 | 355 | 192 | 193 | 1 | 0.7 | 0.7 |
| CINNAMON | CNR063 | 773344 | 7214196 | 621 | -60.5 | 151.6 | 355 | 214 | 229 | 15 | 1.1 | 16.5 |
| CINNAMON | CNR063 | 773344 | 7214196 | 621 | -60.5 | 151.6 | 355 | 306 | 312 | 6 | 2.2 | 13.1 |
| CINNAMON | CNR063 | 773344 | 7214196 | 621 | -60.5 | 151.6 | 355 | 322 | 355 | 33 | 7.4 | 244.9 |
| CINNAMON | CNR063 | <i>includes</i> | | | | | | 336 | 341 | 5 | 30.1 | 150.5 |
| CINNAMON | CNR064 | 773368 | 7214194 | 621 | -60.8 | 150.2 | 234 | 120 | 123 | 3 | 1.9 | 5.7 |
| CINNAMON | CNR064 | 773368 | 7214194 | 621 | -60.8 | 150.2 | 234 | 199 | 208 | 9 | 1.0 | 8.9 |
| CINNAMON | CNR064 | 773368 | 7214194 | 621 | -60.8 | 150.2 | 234 | 215 | 217 | 2 | 0.8 | 1.6 |
| CINNAMON | CNR065 | 773352 | 7214219 | 621 | -59.6 | 150.6 | 202 | 124 | 125 | 1 | 0.8 | 0.8 |
| CINNAMON | CNR065 | 773352 | 7214219 | 621 | -59.6 | 150.6 | 202 | 158 | 159 | 1 | 1.3 | 1.3 |
| CINNAMON | CNR065 | 773352 | 7214219 | 621 | -59.6 | 150.6 | 202 | 201 | 202 | 1 | 1.5 | 1.5 |

| Project | Hole Id | Easting | Northing | RL | Dip (°) | Azimuth (°) | End of Hole (m) | From (m) | To (m) | Downhole Length (m) | Au (g/t) | Gram metres (g*m) |
|----------|---------|---------|----------|-----|---------|-------------|-----------------|----------|--------|---------------------|----------|-------------------|
| CINNAMON | CNR066 | 773467 | 7214127 | 620 | -70.7 | 151.3 | 288 | 26 | 29 | 3 | 0.5 | 1.5 |
| CINNAMON | CNR066 | 773467 | 7214127 | 620 | -70.7 | 151.3 | 288 | 76 | 78 | 2 | 2.0 | 3.9 |
| CINNAMON | CNR066 | 773467 | 7214127 | 620 | -70.7 | 151.3 | 288 | 83 | 97 | 14 | 1.4 | 20.0 |
| CINNAMON | CNR066 | 773467 | 7214127 | 620 | -70.7 | 151.3 | 288 | 103 | 105 | 2 | 1.4 | 2.8 |
| CINNAMON | CNR066 | 773467 | 7214127 | 620 | -70.7 | 151.3 | 288 | 109 | 110 | 1 | 0.5 | 0.5 |
| CINNAMON | CNR066 | 773467 | 7214127 | 620 | -70.7 | 151.3 | 288 | 116 | 118 | 2 | 0.6 | 1.2 |
| CINNAMON | CNR066 | 773467 | 7214127 | 620 | -70.7 | 151.3 | 288 | 121 | 122 | 1 | 0.5 | 0.5 |
| CINNAMON | CNR066 | 773467 | 7214127 | 620 | -70.7 | 151.3 | 288 | 125 | 126 | 1 | 0.6 | 0.6 |
| CINNAMON | CNR066 | 773467 | 7214127 | 620 | -70.7 | 151.3 | 288 | 127 | 128 | 1 | 0.7 | 0.7 |
| CINNAMON | CNR066 | 773467 | 7214127 | 620 | -70.7 | 151.3 | 288 | 138 | 144 | 6 | 1.0 | 6.0 |
| CINNAMON | CNR066 | 773467 | 7214127 | 620 | -70.7 | 151.3 | 288 | 153 | 154 | 1 | 0.5 | 0.5 |
| CINNAMON | CNR066 | 773467 | 7214127 | 620 | -70.7 | 151.3 | 288 | 177 | 178 | 1 | 0.6 | 0.6 |
| CINNAMON | CNR066 | 773467 | 7214127 | 620 | -70.7 | 151.3 | 288 | 182 | 183 | 1 | 0.8 | 0.8 |
| CINNAMON | CNR066 | 773467 | 7214127 | 620 | -70.7 | 151.3 | 288 | 243 | 256 | 13 | 1.2 | 15.9 |
| CINNAMON | CNR066 | 773467 | 7214127 | 620 | -70.7 | 151.3 | 288 | 274 | 275 | 1 | 0.9 | 0.9 |
| CINNAMON | CNR067 | 773507 | 7214149 | 620 | -67.5 | 148.2 | 306 | 26 | 32 | 6 | 4.0 | 23.9 |
| CINNAMON | CNR067 | 773507 | 7214149 | 620 | -67.5 | 148.2 | 306 | 74 | 75 | 1 | 1.0 | 1.0 |
| CINNAMON | CNR067 | 773507 | 7214149 | 620 | -67.5 | 148.2 | 306 | 79 | 101 | 22 | 2.2 | 48.0 |
| CINNAMON | CNR067 | 773507 | 7214149 | 620 | -67.5 | 148.2 | 306 | 112 | 113 | 1 | 0.9 | 0.9 |
| CINNAMON | CNR067 | 773507 | 7214149 | 620 | -67.5 | 148.2 | 306 | 139 | 146 | 7 | 1.1 | 7.8 |
| CINNAMON | CNR067 | 773507 | 7214149 | 620 | -67.5 | 148.2 | 306 | 169 | 170 | 1 | 0.6 | 0.6 |
| CINNAMON | CNR068 | 773535 | 7214199 | 620 | -61.1 | 160.0 | 324 | 80 | 81 | 1 | 12.8 | 12.8 |
| CINNAMON | CNR068 | 773535 | 7214199 | 620 | -61.1 | 160.0 | 324 | 85 | 86 | 1 | 0.7 | 0.7 |
| CINNAMON | CNR068 | 773535 | 7214199 | 620 | -61.1 | 160.0 | 324 | 90 | 91 | 1 | 1.2 | 1.2 |
| CINNAMON | CNR068 | 773535 | 7214199 | 620 | -61.1 | 160.0 | 324 | 97 | 98 | 1 | 0.8 | 0.8 |
| CINNAMON | CNR068 | 773535 | 7214199 | 620 | -61.1 | 160.0 | 324 | 102 | 114 | 12 | 1.5 | 18.4 |
| CINNAMON | CNR068 | 773535 | 7214199 | 620 | -61.1 | 160.0 | 324 | 122 | 126 | 4 | 1.1 | 4.6 |
| CINNAMON | CNR068 | 773535 | 7214199 | 620 | -61.1 | 160.0 | 324 | 137 | 139 | 2 | 1.0 | 2.0 |
| CINNAMON | CNR069 | 773251 | 7213936 | 621 | -60.0 | 151.1 | 184 | 2 | 3 | 1 | 0.5 | 0.5 |
| CINNAMON | CNR069 | 773251 | 7213936 | 621 | -60.0 | 151.1 | 184 | 22 | 23 | 1 | 0.8 | 0.8 |
| CINNAMON | CNR069 | 773251 | 7213936 | 621 | -60.0 | 151.1 | 184 | 36 | 42 | 6 | 7.7 | 46.1 |
| CINNAMON | CNR069 | 773251 | 7213936 | 621 | -60.0 | 151.1 | 184 | 56 | 57 | 1 | 0.6 | 0.6 |
| CINNAMON | CNR069 | 773251 | 7213936 | 621 | -60.0 | 151.1 | 184 | 64 | 65 | 1 | 0.5 | 0.5 |
| CINNAMON | CNR069 | 773251 | 7213936 | 621 | -60.0 | 151.1 | 184 | 115 | 116 | 1 | 5.6 | 5.6 |
| CINNAMON | CNR069 | 773251 | 7213936 | 621 | -60.0 | 151.1 | 184 | 120 | 139 | 19 | 3.7 | 69.9 |
| CINNAMON | CNR069 | 773251 | 7213936 | 621 | -60.0 | 151.1 | 184 | 143 | 157 | 14 | 1.4 | 19.3 |
| CINNAMON | CNR070 | 773217 | 7213986 | 621 | -60.7 | 149.9 | 310 | 70 | 71 | 1 | 1.3 | 1.3 |
| CINNAMON | CNR070 | 773217 | 7213986 | 621 | -60.7 | 149.9 | 310 | 95 | 96 | 1 | 0.6 | 0.6 |
| CINNAMON | CNR070 | 773217 | 7213986 | 621 | -60.7 | 149.9 | 310 | 106 | 107 | 1 | 1.6 | 1.6 |

| Project | Hole Id | Easting | Northing | RL | Dip (°) | Azimuth (°) | End of Hole (m) | From (m) | To (m) | Downhole Length (m) | Au (g/t) | Gram metres (g*m) | |
|----------|---------|-----------------|----------|-----|---------|-------------|-----------------|----------|------------|---------------------|----------|-------------------|-------------|
| CINNAMON | CNR070 | 773217 | 7213986 | 621 | -60.7 | 149.9 | 310 | 112 | 117 | 5 | 5.5 | 27.6 | |
| CINNAMON | CNR070 | 773217 | 7213986 | 621 | -60.7 | 149.9 | 310 | 121 | 122 | 1 | 1.6 | 1.6 | |
| CINNAMON | CNR070 | 773217 | 7213986 | 621 | -60.7 | 149.9 | 310 | 144 | 149 | 5 | 0.7 | 3.6 | |
| CINNAMON | CNR070 | 773217 | 7213986 | 621 | -60.7 | 149.9 | 310 | 156 | 157 | 1 | 0.5 | 0.5 | |
| CINNAMON | CNR070 | 773217 | 7213986 | 621 | -60.7 | 149.9 | 310 | 177 | 190 | 13 | 1.7 | 21.6 | |
| CINNAMON | CNR070 | 773217 | 7213986 | 621 | -60.7 | 149.9 | 310 | 196 | 197 | 1 | 0.5 | 0.5 | |
| CINNAMON | CNR071 | 773300 | 7214014 | 621 | -57.4 | 152.8 | 150 | 75 | 77 | 2 | 3.6 | 7.2 | |
| CINNAMON | CNR071 | 773300 | 7214014 | 621 | -57.4 | 152.8 | 150 | 81 | 84 | 3 | 1.1 | 3.2 | |
| CINNAMON | CNR071 | 773300 | 7214014 | 621 | -57.4 | 152.8 | 150 | 91 | 92 | 1 | 1.0 | 1.0 | |
| CINNAMON | CNR071 | 773300 | 7214014 | 621 | -57.4 | 152.8 | 150 | 111 | 112 | 1 | 0.7 | 0.7 | |
| CINNAMON | CNR071 | 773300 | 7214014 | 621 | -57.4 | 152.8 | 150 | 122 | 131 | 9 | 1.1 | 10.0 | |
| CINNAMON | CNR071 | 773300 | 7214014 | 621 | -57.4 | 152.8 | 150 | 139 | 140 | 1 | 0.8 | 0.8 | |
| CINNAMON | CNR072 | 773295 | 7214020 | 621 | -59.8 | 150.0 | 180 | 66 | 71 | 5 | 1.6 | 8.0 | |
| CINNAMON | CNR072 | 773295 | 7214020 | 621 | -59.8 | 150.0 | 180 | 77 | 80 | 3 | 1.2 | 3.6 | |
| CINNAMON | CNR072 | 773295 | 7214020 | 621 | -59.8 | 150.0 | 180 | 94 | 95 | 1 | 0.9 | 0.9 | |
| CINNAMON | CNR072 | 773295 | 7214020 | 621 | -59.8 | 150.0 | 180 | 109 | 115 | 6 | 0.8 | 5.0 | |
| CINNAMON | CNR072 | 773295 | 7214020 | 621 | -59.8 | 150.0 | 180 | 141 | 142 | 1 | 0.8 | 0.8 | |
| CINNAMON | CNR073 | 773281 | 7214040 | 621 | -60.6 | 151.5 | 210 | 69 | 73 | 4 | 1.3 | 5.1 | |
| CINNAMON | CNR073 | 773281 | 7214040 | 621 | -60.6 | 151.5 | 210 | 95 | 96 | 1 | 0.7 | 0.7 | |
| CINNAMON | CNR073 | 773281 | 7214040 | 621 | -60.6 | 151.5 | 210 | 100 | 108 | 8 | 1.2 | 9.3 | |
| CINNAMON | CNR073 | 773281 | 7214040 | 621 | -60.6 | 151.5 | 210 | 116 | 117 | 1 | 1.6 | 1.6 | |
| CINNAMON | CNR073 | 773281 | 7214040 | 621 | -60.6 | 151.5 | 210 | 165 | 173 | 8 | 4.5 | 36.1 | |
| CINNAMON | CNR073 | 773281 | 7214040 | 621 | -60.6 | 151.5 | 210 | 204 | 208 | 4 | 1.4 | 5.6 | |
| CINNAMON | CNR074A | 773351 | 7214077 | 622 | -59.9 | 149.2 | 145 | 78 | 80 | 2 | 1.0 | 2.0 | |
| CINNAMON | CNR074A | 773351 | 7214077 | 622 | -59.9 | 149.2 | 145 | 88 | 91 | 3 | 0.7 | 2.0 | |
| CINNAMON | CNR074A | 773351 | 7214077 | 622 | -59.9 | 149.2 | 145 | 96 | 97 | 1 | 1.5 | 1.5 | |
| CINNAMON | CNR074A | 773351 | 7214077 | 622 | -59.9 | 149.2 | 145 | 105 | 127 | 22 | 2.8 | 60.9 | |
| CINNAMON | CNR074A | 773351 | 7214077 | 622 | -59.9 | 149.2 | 145 | 144 | 145 | 1 | 0.6 | 0.6 | |
| CINNAMON | CNR077 | 773642 | 7214326 | 619 | -60.9 | 150.7 | 301 | 207 | 244 | 37 | 4.2 | 153.9 | |
| CINNAMON | CNR077 | <i>includes</i> | | | | | | | 210 | 216 | 6 | 8.9 | 53.5 |
| CINNAMON | CNR080 | 772596 | 7213604 | 626 | -59.5 | 149.8 | 144 | 35 | 36 | 1 | 0.5 | 0.5 | |
| CINNAMON | CNR080 | 772596 | 7213604 | 626 | -59.5 | 149.8 | 144 | 40 | 41 | 1 | 1.3 | 1.3 | |
| CINNAMON | CNR081 | 772466 | 7213521 | 627 | -60.4 | 151.5 | 240 | 27 | 28 | 1 | 0.8 | 0.8 | |
| CINNAMON | CNR081 | 772466 | 7213521 | 627 | -60.4 | 151.5 | 240 | 34 | 36 | 2 | 1.7 | 3.4 | |
| CINNAMON | CNR081 | 772466 | 7213521 | 627 | -60.4 | 151.5 | 240 | 47 | 48 | 1 | 0.6 | 0.6 | |
| CINNAMON | CNR081 | 772466 | 7213521 | 627 | -60.4 | 151.5 | 240 | 79 | 80 | 1 | 0.9 | 0.9 | |
| CINNAMON | CNR081 | 772466 | 7213521 | 627 | -60.4 | 151.5 | 240 | 233 | 234 | 1 | 0.6 | 0.6 | |
| CINNAMON | CNR082 | 772331 | 7213436 | 628 | -60.1 | 151.5 | 294 | 32 | 33 | 1 | 0.8 | 0.8 | |
| CINNAMON | CNR082 | 772331 | 7213436 | 628 | -60.1 | 151.5 | 294 | 52 | 53 | 1 | 1.7 | 1.7 | |

| Project | Hole Id | Easting | Northing | RL | Dip (°) | Azimuth (°) | End of Hole (m) | From (m) | To (m) | Downhole Length (m) | Au (g/t) | Gram metres (g*m) |
|----------|---------|-----------------|----------|-----|---------|-------------|-----------------|------------|------------|---------------------|--------------|-------------------|
| CINNAMON | CNR082 | 772331 | 7213436 | 628 | -60.1 | 151.5 | 294 | 233 | 234 | 1 | 0.7 | 0.7 |
| CINNAMON | CNR082 | 772331 | 7213436 | 628 | -60.1 | 151.5 | 294 | 240 | 241 | 1 | 0.6 | 0.6 |
| CINNAMON | CNR082 | 772331 | 7213436 | 628 | -60.1 | 151.5 | 294 | 245 | 246 | 1 | 0.5 | 0.5 |
| CINNAMON | CNR082 | 772331 | 7213436 | 628 | -60.1 | 151.5 | 294 | 287 | 290 | 3 | 1.9 | 5.6 |
| CINNAMON | CNR083 | 772192 | 7213350 | 631 | -59.7 | 151.0 | 222 | 32 | 33 | 1 | 0.6 | 0.6 |
| CINNAMON | CNR083 | 772192 | 7213350 | 631 | -59.7 | 151.0 | 222 | 131 | 140 | 9 | 1.5 | 13.1 |
| CINNAMON | CNR083 | 772192 | 7213350 | 631 | -59.7 | 151.0 | 222 | 164 | 171 | 7 | 29.8 | 208.6 |
| CINNAMON | CNR083 | <i>includes</i> | | | | | | 169 | 170 | 1 | 201.4 | 201.4 |
| CINNAMON | CNR084 | 772914 | 7213824 | 623 | -60.5 | 153.7 | 120 | 6 | 9 | 3 | 0.7 | 2.0 |
| CINNAMON | CNR085 | 772872 | 7213787 | 623 | -60.1 | 153.2 | 234 | 47 | 53 | 6 | 0.6 | 3.4 |
| CINNAMON | CNR085 | 772872 | 7213787 | 623 | -60.1 | 153.2 | 234 | 114 | 115 | 1 | 0.6 | 0.6 |
| CINNAMON | CNR086 | 772843 | 7213751 | 623 | -64.8 | 157.2 | 234 | 88 | 89 | 1 | 0.5 | 0.5 |
| CINNAMON | CNR086 | 772843 | 7213751 | 623 | -64.8 | 157.2 | 234 | 96 | 98 | 2 | 1.2 | 2.4 |
| CINNAMON | CNR086 | 772843 | 7213751 | 623 | -64.8 | 157.2 | 234 | 170 | 171 | 1 | 1.3 | 1.3 |
| CINNAMON | CNR086 | 772843 | 7213751 | 623 | -64.8 | 157.2 | 234 | 207 | 208 | 1 | 1.5 | 1.5 |
| CINNAMON | CNR087 | 773538 | 7214143 | 620 | -65.0 | 150.0 | 228 | 27 | 28 | 1 | 0.9 | 0.9 |
| CINNAMON | CNR087 | 773538 | 7214143 | 620 | -65.0 | 150.0 | 228 | 81 | 83 | 2 | 0.7 | 1.5 |
| CINNAMON | CNR087 | 773538 | 7214143 | 620 | -65.0 | 150.0 | 228 | 133 | 135 | 2 | 1.7 | 3.3 |
| CINNAMON | CNR088 | 773556 | 7214108 | 620 | -65.0 | 150.0 | 186 | 4 | 6 | 2 | 0.9 | 1.7 |
| CINNAMON | CNR088 | 773556 | 7214108 | 620 | -65.0 | 150.0 | 186 | 25 | 31 | 6 | 0.9 | 5.6 |
| CINNAMON | CNR088 | 773556 | 7214108 | 620 | -65.0 | 150.0 | 186 | 59 | 60 | 1 | 13.4 | 13.4 |
| CINNAMON | CNR088 | 773556 | 7214108 | 620 | -65.0 | 150.0 | 186 | 67 | 68 | 1 | 0.6 | 0.6 |
| CINNAMON | CNR088 | 773556 | 7214108 | 620 | -65.0 | 150.0 | 186 | 83 | 84 | 1 | 0.9 | 0.9 |
| CINNAMON | CNR089 | 773572 | 7214087 | 620 | -65.0 | 150.7 | 204 | 4 | 5 | 1 | 1.3 | 1.3 |
| CINNAMON | CNR089 | 773572 | 7214087 | 620 | -65.0 | 150.7 | 204 | 59 | 62 | 3 | 0.8 | 2.3 |
| CINNAMON | CNR091 | 773488 | 7214133 | 620 | -71.6 | 153.0 | 252 | 72 | 76 | 4 | 1.2 | 4.8 |
| CINNAMON | CNR091 | 773488 | 7214133 | 620 | -71.6 | 153.0 | 252 | 87 | 88 | 1 | 0.6 | 0.6 |
| CINNAMON | CNR091 | 773488 | 7214133 | 620 | -71.6 | 153.0 | 252 | 96 | 97 | 1 | 0.8 | 0.8 |
| CINNAMON | CNR091 | 773488 | 7214133 | 620 | -71.6 | 153.0 | 252 | 111 | 112 | 1 | 0.6 | 0.6 |
| CINNAMON | CNR091 | 773488 | 7214133 | 620 | -71.6 | 153.0 | 252 | 117 | 121 | 4 | 0.9 | 3.5 |
| CINNAMON | CNR091 | 773488 | 7214133 | 620 | -71.6 | 153.0 | 252 | 134 | 135 | 1 | 1.4 | 1.4 |
| CINNAMON | CNR091 | 773488 | 7214133 | 620 | -71.6 | 153.0 | 252 | 158 | 160 | 2 | 0.7 | 1.3 |
| CINNAMON | CNR091 | 773488 | 7214133 | 620 | -71.6 | 153.0 | 252 | 192 | 193 | 1 | 0.5 | 0.5 |
| CINNAMON | CNR091 | 773488 | 7214133 | 620 | -71.6 | 153.0 | 252 | 245 | 246 | 1 | 1.1 | 1.1 |
| CINNAMON | CNR092 | 773433 | 7214100 | 621 | -64.7 | 144.0 | 102 | 72 | 73 | 1 | 4.2 | 4.2 |
| CINNAMON | CNR092 | 773433 | 7214100 | 621 | -64.7 | 144.0 | 102 | 83 | 84 | 1 | 3.3 | 3.3 |
| CINNAMON | CNR092 | 773433 | 7214100 | 621 | -64.7 | 144.0 | 102 | 99 | 100 | 1 | 4.8 | 4.8 |
| CINNAMON | CNR094 | 773205 | 7213976 | 622 | -59.3 | 152.2 | 246 | 94 | 95 | 1 | 0.5 | 0.5 |
| CINNAMON | CNR094 | 773205 | 7213976 | 622 | -59.3 | 152.2 | 246 | 98 | 99 | 1 | 0.5 | 0.5 |

| Project | Hole Id | Easting | Northing | RL | Dip (°) | Azimuth (°) | End of Hole (m) | From (m) | To (m) | Downhole Length (m) | Au (g/t) | Gram metres (g*m) |
|----------|---------|---------|----------|-----|---------|-------------|-----------------|----------|--------|---------------------|----------|-------------------|
| CINNAMON | CNR094 | 773205 | 7213976 | 622 | -59.3 | 152.2 | 246 | 109 | 110 | 1 | 1.7 | 1.7 |
| CINNAMON | CNR094 | 773205 | 7213976 | 622 | -59.3 | 152.2 | 246 | 117 | 118 | 1 | 1.2 | 1.2 |
| CINNAMON | CNR094 | 773205 | 7213976 | 622 | -59.3 | 152.2 | 246 | 129 | 131 | 2 | 2.6 | 5.2 |
| CINNAMON | CNR094 | 773205 | 7213976 | 622 | -59.3 | 152.2 | 246 | 199 | 206 | 7 | 1.4 | 9.7 |
| CINNAMON | CNR094 | 773205 | 7213976 | 622 | -59.3 | 152.2 | 246 | 210 | 211 | 1 | 0.7 | 0.7 |
| CINNAMON | CNR095 | 773179 | 7214019 | 622 | -65.5 | 150.7 | 202 | 48 | 49 | 1 | 0.8 | 0.8 |
| CINNAMON | CNR095 | 773179 | 7214019 | 622 | -65.5 | 150.7 | 202 | 51 | 52 | 1 | 0.6 | 0.6 |
| CINNAMON | CNR095 | 773179 | 7214019 | 622 | -65.5 | 150.7 | 202 | 56 | 57 | 1 | 2.1 | 2.1 |
| CINNAMON | CNR095 | 773179 | 7214019 | 622 | -65.5 | 150.7 | 202 | 82 | 87 | 5 | 0.6 | 2.9 |
| CINNAMON | CNR095 | 773179 | 7214019 | 622 | -65.5 | 150.7 | 202 | 176 | 178 | 2 | 1.0 | 1.9 |
| CINNAMON | CNR095 | 773179 | 7214019 | 622 | -65.5 | 150.7 | 202 | 193 | 194 | 1 | 5.8 | 5.8 |
| CINNAMON | CNR096 | 773155 | 7213888 | 622 | -64.2 | 150.7 | 208 | 49 | 50 | 1 | 0.7 | 0.7 |
| CINNAMON | CNR096 | 773155 | 7213888 | 622 | -64.2 | 150.7 | 208 | 55 | 56 | 1 | 2.5 | 2.5 |
| CINNAMON | CNR096 | 773155 | 7213888 | 622 | -64.2 | 150.7 | 208 | 65 | 76 | 11 | 0.7 | 8.0 |
| CINNAMON | CNR096 | 773155 | 7213888 | 622 | -64.2 | 150.7 | 208 | 135 | 136 | 1 | 1.1 | 1.1 |
| CINNAMON | CNR097 | 773134 | 7213923 | 622 | -65.7 | 151.5 | 268 | 136 | 143 | 7 | 1.4 | 9.5 |
| CINNAMON | CNR097 | 773134 | 7213923 | 622 | -65.7 | 151.5 | 268 | 150 | 151 | 1 | 1.3 | 1.3 |
| CINNAMON | CNR097 | 773134 | 7213923 | 622 | -65.7 | 151.5 | 268 | 163 | 165 | 2 | 1.7 | 3.5 |
| CINNAMON | CNR097 | 773134 | 7213923 | 622 | -65.7 | 151.5 | 268 | 179 | 201 | 22 | 2.0 | 43.6 |
| CINNAMON | CNR097 | 773134 | 7213923 | 622 | -65.7 | 151.5 | 268 | 212 | 223 | 11 | 1.2 | 13.2 |
| CINNAMON | CNR099 | 772983 | 7213862 | 623 | -65.0 | 150.0 | 332 | 29 | 30 | 1 | 1.4 | 1.4 |
| CINNAMON | CNR099 | 772983 | 7213862 | 623 | -65.0 | 150.0 | 332 | 35 | 36 | 1 | 0.6 | 0.6 |
| CINNAMON | CNR100 | 773156 | 7213924 | 622 | -65.3 | 148.6 | 250 | 56 | 59 | 3 | 0.6 | 1.9 |
| CINNAMON | CNR100 | 773156 | 7213924 | 622 | -65.3 | 148.6 | 250 | 66 | 67 | 1 | 0.7 | 0.7 |
| CINNAMON | CNR100 | 773156 | 7213924 | 622 | -65.3 | 148.6 | 250 | 85 | 86 | 1 | 0.8 | 0.8 |
| CINNAMON | CNR100 | 773156 | 7213924 | 622 | -65.3 | 148.6 | 250 | 94 | 95 | 1 | 0.9 | 0.9 |
| CINNAMON | CNR100 | 773156 | 7213924 | 622 | -65.3 | 148.6 | 250 | 102 | 108 | 6 | 2.2 | 13.3 |
| CINNAMON | CNR100 | 773156 | 7213924 | 622 | -65.3 | 148.6 | 250 | 140 | 142 | 2 | 2.1 | 4.2 |
| CINNAMON | CNR100 | 773156 | 7213924 | 622 | -65.3 | 148.6 | 250 | 155 | 158 | 3 | 1.3 | 4.0 |
| CINNAMON | CNR100 | 773156 | 7213924 | 622 | -65.3 | 148.6 | 250 | 167 | 180 | 13 | 1.8 | 23.0 |
| CINNAMON | CNR100 | 773156 | 7213924 | 622 | -65.3 | 148.6 | 250 | 206 | 210 | 4 | 0.9 | 3.6 |
| CINNAMON | CNR100 | 773156 | 7213924 | 622 | -65.3 | 148.6 | 250 | 214 | 216 | 2 | 2.1 | 4.2 |
| CINNAMON | CNR105 | 773054 | 7213939 | 622 | -65.0 | 150.0 | 298 | 201 | 202 | 1 | 1.1 | 1.1 |
| CINNAMON | CNR105 | 773054 | 7213939 | 622 | -65.0 | 150.0 | 298 | 212 | 219 | 7 | 1.3 | 8.8 |
| CINNAMON | CNR121 | 773334 | 7214202 | 622 | -67.1 | 149.3 | 420 | 257 | 259 | 2 | 10.1 | 20.1 |
| CINNAMON | CNR121 | 773334 | 7214202 | 622 | -67.1 | 149.3 | 420 | 292 | 293 | 1 | 0.8 | 0.8 |
| CINNAMON | CNR121 | 773334 | 7214202 | 622 | -67.1 | 149.3 | 420 | 337 | 338 | 1 | 0.7 | 0.7 |
| CINNAMON | CNR121 | 773334 | 7214202 | 622 | -67.1 | 149.3 | 420 | 346 | 347 | 1 | 0.6 | 0.6 |
| CINNAMON | CNR121 | 773334 | 7214202 | 622 | -67.1 | 149.3 | 420 | 407 | 409 | 2 | 5.0 | 9.9 |

| Project | Hole Id | Easting | Northing | RL | Dip (°) | Azimuth (°) | End of Hole (m) | From (m) | To (m) | Downhole Length (m) | Au (g/t) | Gram metres (g*m) |
|----------|---------|---------|----------|-----|---------|-------------|-----------------|----------|--------|---------------------|----------|-------------------|
| CINNAMON | CNR121 | 773334 | 7214202 | 622 | -67.1 | 149.3 | 420 | 413 | 416 | 3 | 0.6 | 1.7 |

For personal use only

Section 1 Sampling Techniques and Data

Cinnamon Deposit

(Criteria in this section apply to all succeeding sections)

| Criteria | Commentary |
|---|--|
| Sampling techniques | <ul style="list-style-type: none"> This release relates to drilling results completed by Catalyst since acquiring the Cinnamon tenements from Vango Mining in 2023. The Mareast-Marwest-Cinnamon MRE released in July 2024 did not include any of the Catalyst holes. Most holes were drilled using Reverse Circulation drilling (RC) to an average depth of 195m. Only 7 drillholes had DD tails completed after their RC pre-collars for a total of 985.6m of core. A total of 91 holes for 19,067.6m for which assays have been received (cut-off date 20/10/2025) form the basis of this Exploration Results announcement. Reverse Circulation holes were sampled at a 1m interval from the rig mounted cyclone. The DD tails were sampled using HQ/NQ half core at 1m intervals or to geological boundaries. For DD samples, downhole depth is recorded by the drillers on core blocks after each core run. This was checked and compared to the measurements of the core. |
| Drilling techniques | <p><i>Reverse Circulation drilling was conducted by WestDrill company for the June-July 2024 campaign and by K-Drill company from April 2025 utilizing a 5.75 inch face sampling bit.</i></p> <p><i>Diamond drilling utilised HQ core with a diameter of 63.5 mm, and NQ core with a diameter of 47.6 mm.</i></p> |
| Drill sample recovery | <ul style="list-style-type: none"> Most RC drilling was bagged on 1 m intervals and an estimate of sample recovery has been made on the size of each sample. Some RC holes precollars were composite sampled at a 3 metres interval. The core was jig-sawed back together and metre marked carefully. Discrepancies to core blocks are brought up with the drill contractor. Occasionally core loss blocks are inserted. Core recovery for the diamond drilling was based on the measured core returned for each 3 m run. Overall drill core recovery is very good, with an average recovery of 85% through the mineralised zones. There is no known relationship between sample recovery and grade at Cinnamon. |
| Logging | <ul style="list-style-type: none"> All holes were logged on site by a qualified geologist. Samples have been logged to a level of detail to support appropriate Mineral Resource estimation, mining studies and metallurgical studies. Logging is both qualitative and quantitative. Logging records include: depth from, depth to, lithology, texture, colour, alteration style, alteration intensity, alteration mineralogy, sulphide (percentage and type), quartz (percentage), veining, and general comments. Orientated core structural measurements are taken at relevant structures and where the foliation is relatively consistent. All DD core is digitally photographed. |
| Sub-sampling techniques and sample preparation | <ul style="list-style-type: none"> All samples from CNR001 to CNR032 were dispatched to the ALS laboratory in Perth for gold fire assay analysis (which includes the DD cores). All samples from CNR033 and onwards were dispatched to several laboratories, mainly to the Intertek laboratory in Perth for gold fire assay analysis. The other laboratories are ALS in Perth, SGS in Perth and a couple of holes were sent to the Plutonic on-site lab. Half cut diamond core was sampled on 1m intervals. Broken/sheared core with poor rock strength that were unable to be cut was grab sampled by selecting core pieces. Whole core sampling has recently been implemented in broken/sheared zones to resolve any possible grade bias issues associated with half core grab sampling in broken/sheared zones. NQ core samples have been sent to several labs: the majority to ALS (Au-AA26), some to SGS (GO_FAP50V10) and a several holes to Plutonic onsite lab (PAL_DIBK). Sample preparation procedures for DD includes: <ul style="list-style-type: none"> 1-4 hours drying at 150°C depending on moisture content Entire core sample is crushed to 10mm 3kg riffle split for pulverisation Pulverise to 90% passing 75µm Scoop 250-300g Sample preparation protocols and sample sizes are considered appropriate for the style of |

| Criteria | Commentary |
|--|--|
| | mineralisation encountered and should provide representative results. |
| <i>Quality of assay data and laboratory tests</i> | <ul style="list-style-type: none"> • Samples analysed at ALS Laboratories using a 50 g Fire Assay method (Au-AA26). • Samples analysed at SGS Laboratories using a 50 g Fire Assay method (GO_FAP50V10). • Samples analysed at Intertek Laboratories were using a 25 g Fire Assay method (FA25/MS or FA25/OE) until recently when it was switched to a 50 g Fire Assay method (FA25/OE). • Samples analysed at Plutonic onsite lab using PAL method (PAL_DIBK). The Pulverising and Leach (PAL) method is not considered to be a total gold analysis, however the larger sample size still produces a representative result. • Samples were dried, crushed and pulverised prior to analysis. • Certified Reference Material (CRM's) were submitted every 20 samples. CRM's are of similar grade tenor to those expected grades in the sampling and were selected based on their grade range and mineralogical properties with an emphasis on sulphide ores. • Blanks are inserted every 20 samples. • Field duplicates were inserted every 20 samples. • Crush sizing analysis is conducted randomly by the Laboratory as part of their QC process. Pulp residues are expected to have 90% passing $\leq 75\mu\text{m}$. This data is monitored by the Laboratory Supervisor. Grind times can be lengthened accordingly. • Current procedures dictate a process of validation and checking of laboratory results when data is returned by the laboratory as it is loaded into the independently managed Quest database. A standard set of plots and checks are undertaken, and if results fall outside of the expected limits, then re-assaying is requested. QAQC reports are generated by the database administrator and documented from automated routines out of the database |
| <i>Verification of sampling and assaying</i> | <ul style="list-style-type: none"> • Drilling data was verified by the geologist first and then the Database Administrator before importing into the main Quest database (proprietary database system). • Logging is completed electronically on laptops. Database protocols and rules are applied upon data entry. • All drill data within site databases are regularly validated using both internal database systems and external validation tools. |
| <i>Location of data points</i> | <ul style="list-style-type: none"> • All drill collars have been accurately located using DGPS. • Downhole survey data was collected using an Axis Mining Technology Champ North Seeking Gyro tool. Surveys are undertaken on 30m intervals as the tool is removed from the holes once the hole is completed. • The diamond holes used NSGY tool with surveys collected on 5m intervals. • Downhole surveys are visually inspected for anomalous changes in drill trace, (i.e does the drill hole apparently bend inordinately). |
| <i>Data spacing and distribution</i> | <ul style="list-style-type: none"> • Infill drilling on a nominal 20m grid spacing was completed to confirm both geological and grade continuity in the main mineralized trend. • Broader spaced drilling, 100m along strike, was completed to target a parallel steep dipping shear-zone located about 140m northwest from the main trend. • Extensional drilling 1.3km along strike from Cinnamon was completed on 160m spaced lines, with additional infill RC drilling on 50m spaced lines. • Further extensional drilling on nominal 100m spaced lines was completed to the northeast of Cinnamon and additional infill RC holes were completed at the Cobalt prospect. |
| <i>Orientation of data in relation to geological structure</i> | <ul style="list-style-type: none"> • The orientation of a majority of the drilling is approximately perpendicular to the strike and dip of the mineralisation and is unlikely to have introduced any sampling bias. • Certain holes have drilled parallel to key structures, but density of drilling and drilling on other orientations has allowed detailed geological modelling of these structures and hence any sampling bias in a single hole has been removed. |
| <i>Sample security</i> | <ul style="list-style-type: none"> • The chain of custody is managed by Catalyst employees and contractors. • Samples were bagged and labelled by company geologists or geological assistants and sealed in bulk bags with a security seal that remains unbroken when delivered to the lab. • Once a hole has been sampled, the sample intervals and checked geology documents are uploaded into the Quest database system managed by EarthSQL. • The independent Database Administrator (DBA) merges the validated drilling data with the certified laboratory assay files where validation routines for QAQC are completed before database |

| Criteria | Commentary |
|--------------------------|--|
| | <p>exports and reports are issued.</p> <ul style="list-style-type: none"> Catalyst samples were stored on site and delivered to the laboratories in Perth by a Contracted Transport Company. Consignment notes were used place to track the samples. Operator sample security is assumed to be consistent and adequate. |
| <i>Audits or reviews</i> | <ul style="list-style-type: none"> A review of standards, blanks and duplicates indicate sampling and analysis has been completed appropriately with no significant issues discovered. Historical reviews of the database for the Marymia area have been examined previously and a proportion of holes were compared to original data sources and found to be consistent wherever checked. |

For personal use only



Section 2 Reporting of Exploration Results

Cinnamon Deposit

(Criteria listed in the preceding section also apply to this section.)

| Criteria | Commentary |
|--|--|
| Mineral tenement and land tenure status | <ul style="list-style-type: none"> Located in the Marymia - Plutonic Greenstone Belt ~200 km northeast of Meekatharra in the Midwest mining district in WA The Cinnamon drilling campaign occurred on: <ul style="list-style-type: none"> M52/228 - granted tenement in good standing. M52/229 - granted tenement in good standing. The tenements predate Native title interests, but are covered by the Gingirana Native Title claim. The tenements are 100% owned Catalyst Metals Ltd. Gold production will be subject to a 2.5% government royalty. |
| Exploration done by other parties | <ul style="list-style-type: none"> Approximately 15 phases of RAB and aircore drilling have been completed across the Cinnamon Prospect since July 1989. RAB and aircore drilling intersected both lateritic and supergene gold mineralisation over 5.75km NE-SW along the Avery Fault corridor. The Cinnamon Laterite pit was exploited for gold mineralisation in the basal nodular gravels of the transported laterite. Rock-chips taken from quartz veining and haematitic indurated saprolite from a "good-bye cut" at the southern end of the laterite pit returned assay results of 31g/t and 11g/t, respectively. These results suggest mineralised structures beneath the transported laterite may be responsible for the enriched gold-in-laterite. The RC drilling prior to 2001 undertaken by Resolute was generally drilled to test directly under better RAB intersections. Several discrete pods were defined but the orientation of high-grade mineralised zones remains poorly understood. Barrick Gold took over the project from Resolute and completed several phases of RC drilling. In 2001, seventeen RC holes on 40m, 80, 160m and 320m spaced traverses were drilled as a broad test of the northeastern portion of the Cinnamon Prospect. The holes were designed to test for a large mineralised system at depth. The holes returned several broad low-grade zones and several narrow high-grade intersections but failed to establish a large source for the system. Development drilling 2002 consisted of 253 RC holes for 20,218 metres and 2 diamond Geotechnical holes for 295.30 metres. The drilling was staged and targeted at the known mineralised zones depicted in earlier drilling. First pass hole spacing was 40 x 40m around known mineralisation which would be closed to 20 x 20m if significant mineralisation intersected. Further infill & lateral extension drilling in 2003-2004 was completed with 181 holes RC for a total of 17,581m and 11 RC/DD holes for a total of 2,756.86m. 34 RC holes were added in 2010-2011 for a total of 4733m as infill drilling in the main mineralised zones. Vango Mining completed 4 RC/DD hole in 2018 for a total of 1137.9m in the main mineralized zone. Catalyst consolidated the Marymia belt in 2023 following the successful acquisition of Vango Mining and the merger with Superior Gold Inc. |
| Geology | <ul style="list-style-type: none"> Marymia mineralisation is structurally controlled, orogenic, mesothermal (amphibolite metamorphic facies) in style, associated with the late tectonic D3 high-angle thrusting event and open folding/flexing and dilation of earlier - including D1/D2 thrusts. Gold mineralisation at Cinnamon is hosted within shear zones within conglomerates with felsic clasts within a mafic derived matrix. High grade zones are located in flexures of the shear zones. |
| Drill hole Information | <ul style="list-style-type: none"> A table of drill hole data pertaining to this release is attached. |
| Data aggregation methods | <ul style="list-style-type: none"> Reported drill results are uncut. All relevant intervals to the reported mineralised intercept are length weighted to determine the average grade for the reported intercept. All significant intersections are reported with a lower cut-off grade of 0.5 g/t Au including a maximum of 3m of internal dilution. Individual intervals below this cut off are reported where they are considered to be required in the context of the presentation of results. No metal equivalents are reported. |
| Relationship between mineralisation | <ul style="list-style-type: none"> Drilling is orientated as close to perpendicular to mineralisation where possible. Downhole intercept lengths are reported for this phase of drilling. |

| Criteria | Commentary |
|---|---|
| <i>widths and intercept lengths</i> | |
| Diagrams | <ul style="list-style-type: none"> • Appropriate diagrams are included in the report as plans, cross sections and isometric views. |
| <i>Balanced reporting</i> | <ul style="list-style-type: none"> • All holes being reported are included in the tables. • Diagrams show the location and tenor of both high and low grade samples. |
| Other substantive exploration data | <ul style="list-style-type: none"> • No additional exploration data is included in this release. |
| <i>Further work</i> | <ul style="list-style-type: none"> • Resource definition, infill and extensional drilling programs are underway, and will continue in line with mine development requirements. |

For personal use only

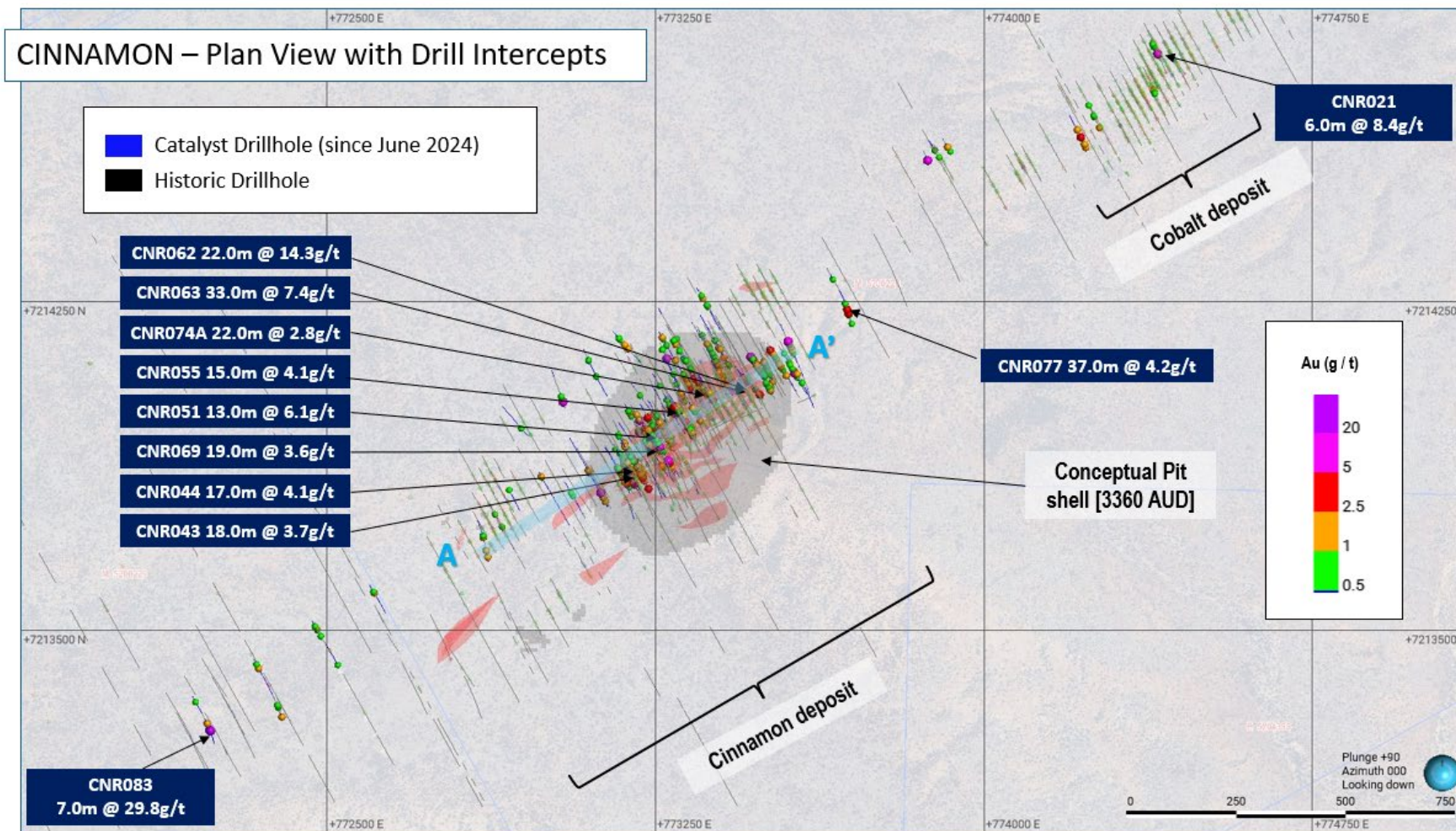


Figure 5: Cinnamon plan view with representative long section and cross section location

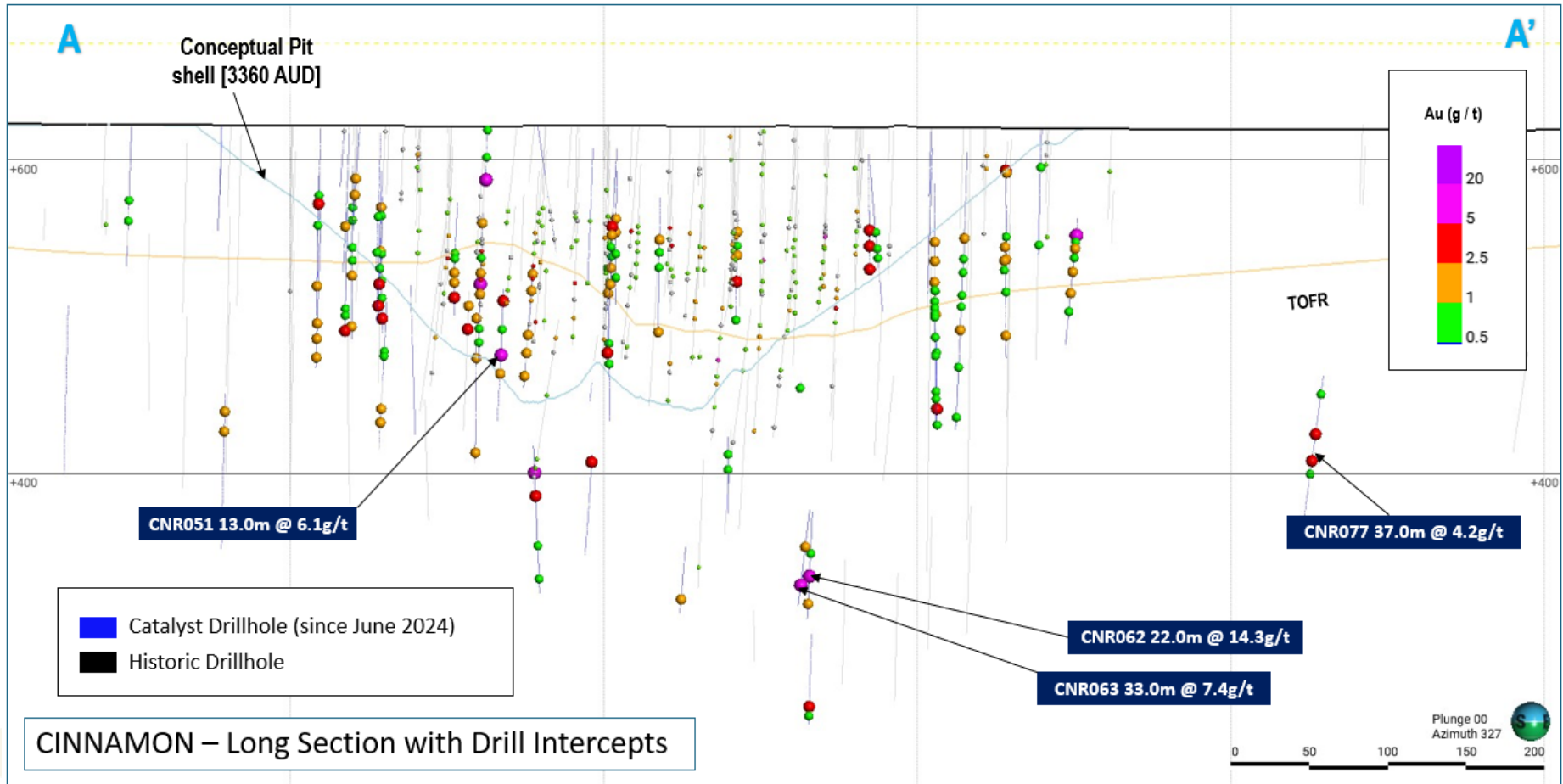


Figure 6: Cinnamon long section