

ASX ANNOUNCEMENT

23 October 2025

GEORGETOWN GOLD PROJECT HIGHGRADE GOLD DRILLING RESULTS AT ELECTRIC LIGHT FURTHER DRILLING PLANNED

Savannah Goldfields Limited (“Savannah” or “the Company”) (ASX:SVG) is pleased to announce results from the recent Reverse Circulation (RC) exploration drilling programme at the Electric Light Prospect. Electric Light forms part of the Company’s Georgetown Gold Project and is located approximately 20 km north of Georgetown in far North Queensland and is located approximately 30 km by road north of SVG’s Georgetown Gold Processing Plant (GGPP).

HIGHLIGHTS

- Best intercept was recorded in drill hole EL25RC1012, which intersected **7 m @ 9.92 g/t Au** from 13 meters, including **3m @ 16.74 g/t Au** from 14m.
- Six RC holes were drilled for a total of 408m at the Electric Light Prospect.
- Significant intercepts include:
 - EL25RC1012 **7m @ 9.92 g/t Au** from 13m
 - including **3m @ 16.74 g/t Au** from 14m
 - EL25RC1010 **7m @ 0.90 g/t Au** from 32m
 - EL25RC1011 **1m @ 2.55 g/t Au** from 60m
 - EL25RC1013 **3m @ 1.16 g/t Au** from 44m
- The holes were drilled within the Electric Light Mining Lease (ML3548) and were designed to test for gold mineralisation under the historic open pit.
- One hole, EL25RC1012 was designed to test for near surface gold mineralisation south of the open pit.
- All six holes intersected gold mineralisation assaying at +0.50 g/t Au, with the intercept widths ranging from 1m to 7m wide.
- The drilling confirms that the gold mineralisation at Electric Light dips to the east and plunges to the south.
- These results complement the significant historical drill intercepts at Electric Light which include:
 - EL17 **12m @ 12.3 g/t Au** from 20m
 - EL20 **21m @ 8.4 g/t Au** from 20m
 - EL26 **11m @ 13.1 g/t Au** from 22m
 - EL48 **15m @ 15.5 g/t Au** from 75m

For personal use only

- For personal use only
- A complete set of gold assay results from historical drilling by previous explorers between 1980 and 2010 at Electric Light which haven't been previously released by Savannah are also set out in this announcement below.
 - Additional RC holes are planned to be drilled at Electric Light in November to further test along strike and down plunge in the area modelled to contain high grade gold.
 - Two PQ diamond holes are also planned to provide material for metallurgical test work.
 - These latest drilling results indicate that potential exists to increase the Electric Light Inferred Mineral Resource of 388,000t @ 3.70 g/t for 46,000 oz.

Savannah's CEO, Brad Sampson commented, "*We are excited that these new drill holes in Electric Light have delivered high grade gold intercepts that support our geologists' model of the gold mineralisation. The follow up drilling in November will help extend this model and also provide drill core that we intend to use for further metallurgical test work.*"

ELECTRIC LIGHT LOCATION AND GEOLOGY

The Electric Light prospect is located approximately 20 km north of Georgetown and 30 km north of Savannah's Georgetown Gold Processing Plant (GGPP) (Figure 1).

The Electric Light deposit is contained within ML3548 and EPM8545. A shallow open pit is situated within ML3548 which was excavated to a depth of 15m by Deutsche Rohstoff Australia Pty Ltd (DRAU) in 2011. DRAU extracted approximately 23kt of oxide ore at a grade of 8.70 g/t Au containing approximately 6,300 oz Au.

The Electric Light Gold Deposit is situated close to the junction of two major faults, the Electric Light and the Delaney Faults. The Electric Light Gold Deposit lies along the major north-trending Delaney Fault zone, with the fault zone being 50 m to 100 m wide at Electric Light. The east-trending Electric Light Fault and a number of east south-east trending minor faults displace the Delaney Fault close to the gold mineralisation.

The Delaney Fault zone contains a highly altered diorite of probable Proterozoic age, which extends some distance north and south of the known deposit. The Delaney Granite, a medium grained porphyritic muscovite biotite granite of Middle-Proterozoic age, forms the footwall of the mineralized lode to the west of the Delaney Fault and to the east are Proterozoic metamorphic rocks mainly comprising sediments of the Daniel Creek Formation.

The gold mineralisation is hosted in a grey-coloured siliceous breccia (rhyolite) – dacite dyke of possible Permo-Carboniferous age that intrudes the fault zone. At surface, the dyke is traceable over 200 metres by old workings. The Electric Light mineralisation displays porphyry style alteration associated with a siliceous rhyolitic breccia. There is a main mineralised vein which strikes northeast – southwest and dips 70° towards the southeast along the Delaney Fault with subordinate discontinuous subparallel structures in the hanging wall that are more erratic in occurrence.

For personal use only

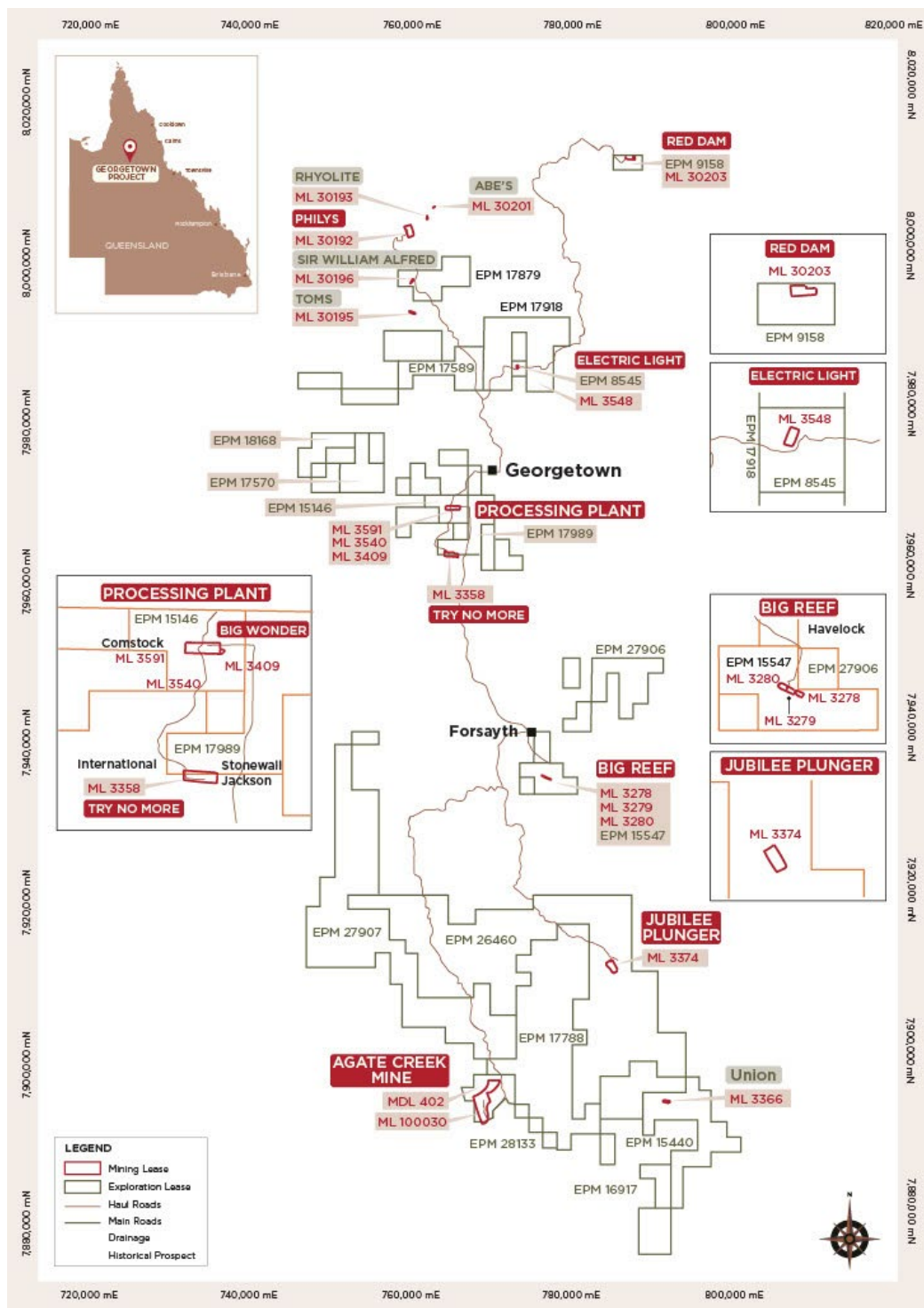


Figure 1: Location Map for Savannah's Tenements

The main mineralised vein dips to the southeast and varies in thickness from 5 m to 35 m. The dyke pinches and swells into lenses containing massive sulphides and quartz sericite alteration. One such lens occurs at surface and has been traced south on a very shallow plunge of between 5 and 20 degrees, for a total length of 300 m. The Deposit is a hydrothermal gold deposit with mineral alteration and assemblages typical of a porphyry gold copper system. Chloritic and sericitic alteration is well developed around the mineralization and most intense where it extends to the diorite.

ELECTRIC LIGHT DRILLING

Drilling at Electric Light by previous explorers delineated oxide gold mineralisation north and south of the DRAU open pit and also identified sulphide gold mineralisation down dip and down plunge of the open pit. An Inferred Mineral Resource for Electric Light of 388,000t @ 3.70 g/t for 46,000 oz. was reported to the ASX on 7 February 2022 in an announcement titled “Georgetown Project Mineral Resources”.

In September 2025, Savannah Goldfields drilled six (6) RC holes for 408 metres at Electric Light within the boundary of ML3548. The holes were designed to test the area underneath the existing pit and to drill at the southernmost end of the ML boundary to determine if additional shallow gold mineralisation could be identified south of the current pit. Hole parameters and hole locations are presented in Table 1 and Figure 4.

The holes were drilled to depths of between 30m to 96m, using a 685 Schramn drilling rig from GeoDrill. The holes were drilled at -60 degrees to the northwest. The holes were designed to test gold mineralised within the Delany Fault zone that strikes Northeast – Southwest and dips approximately -60 degrees to the southeast and has a south westerly plunge.

The drilling programme was limited to the area contained within the ML boundary pending Cultural Heritage clearances of drill pads for a further 10 to 15 RC holes which are planned to be drilled inside the adjoining EPM, this drilling is planned to commence in November 2025.

All six drill holes intersected gold mineralisation associated with sulphides, usually in the form of arsenopyrite, sphalerite and galena. Sulphide content of the mineralised zones in the holes varied from 0.50% sulphides to in excess of 8% sulphides. The drilling confirmed that the gold mineralisation at Electric Light is plunging to the southeast with the highest intercept observed in the southernmost hole of this programme (EL25RC1012) with narrower zones of anomalous gold mineralisation intersected in the other drill holes.

Table 1: Electric Light Drill Hole Parameters

Prospect	Hole_ID	GDA_E	GDA_N	RL	Drilling Type	Dip	GDA94 Azimuth	Final Depth (m)	Sample Recovery (%)
Electric Light	EL25RC1010	772194.49	7988863.15	324.11	RC	-60.00	317.00	78.00	98.46
Electric Light	EL25RC1011	772204.55	7988856.03	327.87	RC	-60.00	316.00	96.00	95.1
Electric Light	EL25RC1012	772164.63	7988847.84	318.07	RC	-60.00	311.00	30.00	89.66
Electric Light	EL25RC1013	772216.12	7988881.01	326.52	RC	-60.00	316.00	60.00	90.66
Electric Light	EL25RC1014	772234.67	7988905.45	320.31	RC	-60.00	319.00	54.00	94.4
Electric Light	EL25RC1015	772260.64	7988922.47	322.48	RC	-60.00	319.00	90.00	95.8

ELECTRIC LIGHT ASSAY RESULTS

The six RC holes drilled at Electric Light were sampled at 1m intervals. A cone splitter was attached to the drill rig’s cyclone with a 12.5% split sample collected from the cone splitter in a calico bag. Samples weighing between 2 to 3 kg were collected in a calico bag which was sent to Intertek Laboratories in Townsville for assay. The remaining 87.5% of the split was collected in large green plastic bags and left on the drill site to be rehabilitated at a later date. The samples were assayed for gold using the Intertek FA50/OE methodology and multi-element assays were also completed using Intertek’s 4A/MS methodology.

Sample recovery varied from a low of 10% at the top of the holes to 100%. The vast majority of the samples had a 100% recovery rate with the majority of samples collected within mineralised zones having a recovery of 100%. One to three duplicate samples were submitted

for each hole, with the number of duplicates submitted per hole dependant on hole depth. Duplicate sample assay results replicated the original samples within an acceptable range.

All of the six drill holes intersected the gold mineralised zone at Electric Light with the gold mineralised zone varying from 1m wide to 7m wide (True thickness).

A table of significant intercepts is included in Table 2, a table with the individual assay results for the holes and the elements considered significant by the competent person are included as Appendix 2. Cross sections for holes EL25RC1010, EL25RC1011 and 1012 are presented in Figures 2 and 3.

Table 2: Electric Light – Drill Hole Results October 2025

From_Depth (m)	To_Depth (m)	Width (m)	Au g/t	Ag g/t	As (%)	Pb (%)	S (%)	Zn (%)	Average Rec. (%)
32	39	7	0.9	4.83	1.57	0.29	4	0.24	100
60	61	1	2.56	2.69	0.03	0.08	1.62	0.15	100
13	20	7	9.92	3.44	0.18	0.04	2	0.04	100
14	17	3	16.74	3.95	0.16	0.04	2.5	0.04	100
44	47	3	1.16	6.12	0.95	0.13	4	0.26	100
19	20	1	1.25	4.58	0.37	0.08	0.33	0.17	100
43	44	1	0.99	0.64	0.03	0.003	1.78	0.001	10
0	2	2	0.73	0.85	0.12	0.01	0.095	0.02	100

Intercepts are calculated using a 0.5 g/t Cut-off grade, with a maximum of 1m internal dilution, no top cut has been applied. The true thickness of the intercept shown is the true thickness as the mineralised zone generally dips at -60 degrees as observed in geological mapping and by previous drill programmes, and the drill hole intersected the mineralised zone perpendicular to its dip.

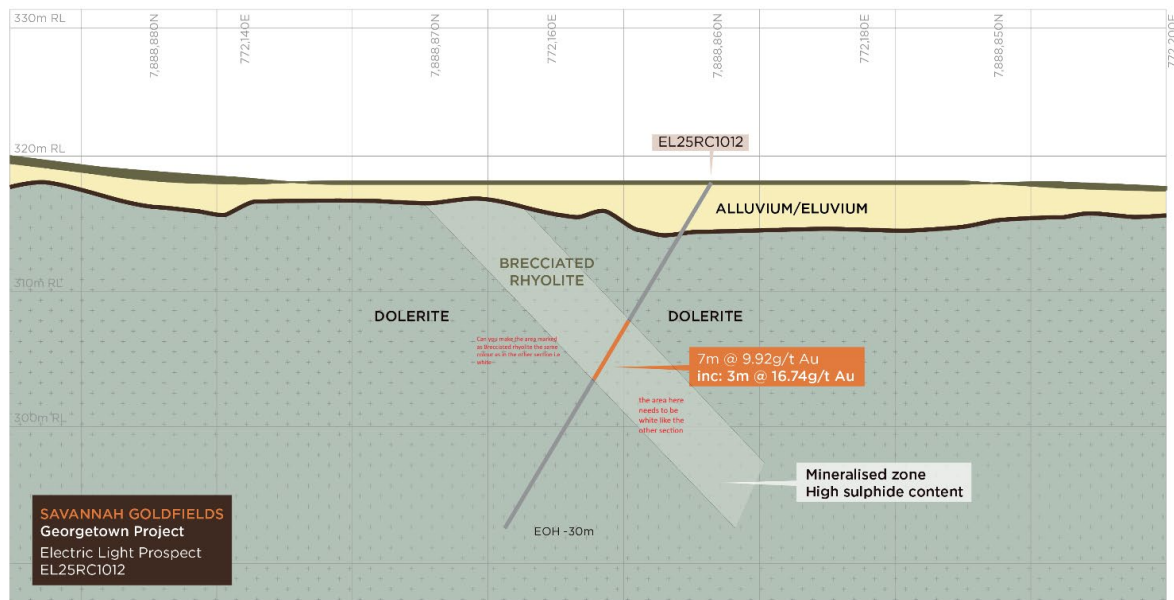


Figure 2: Idealised Cross Section at drill hole EL25RC1012

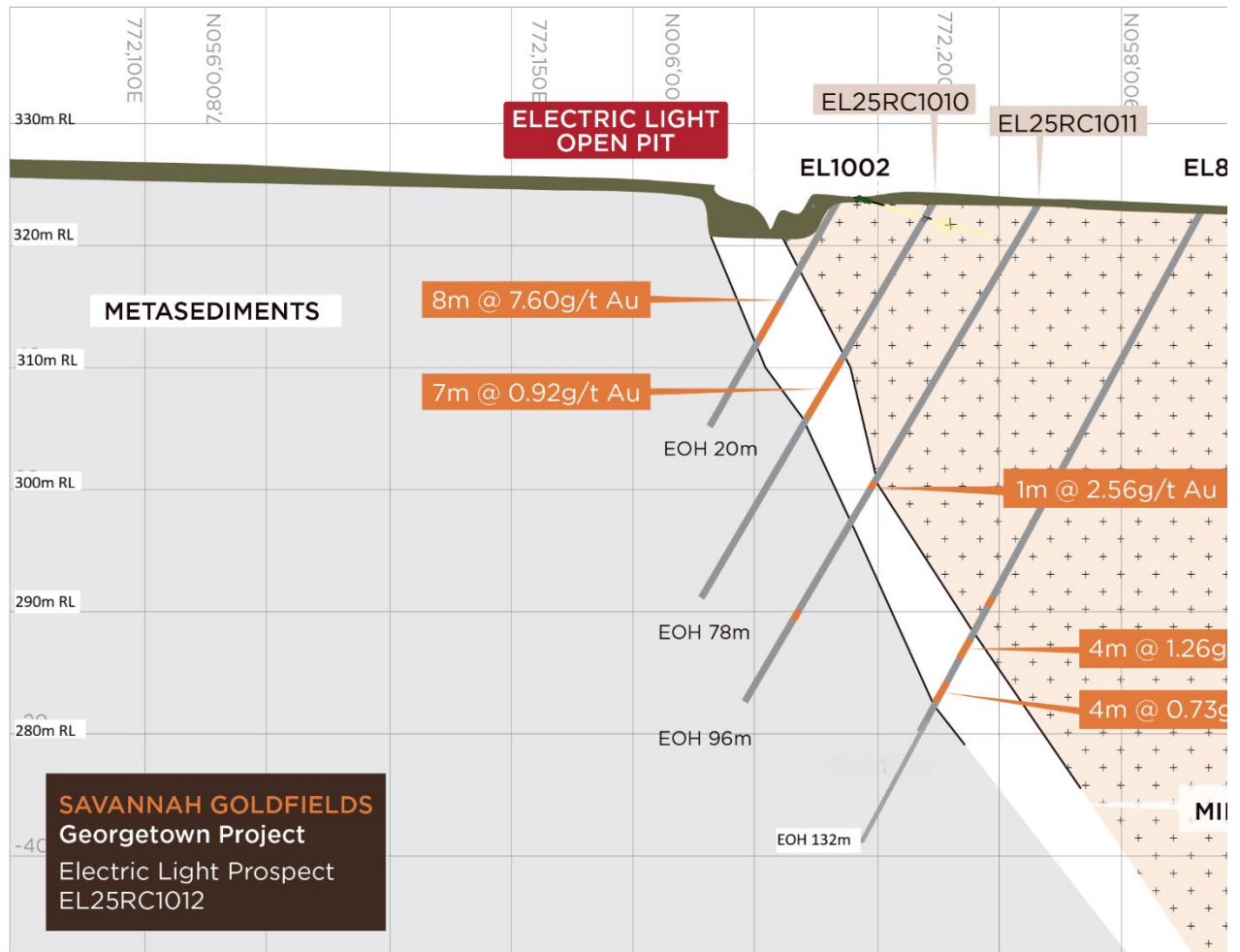


Figure 3: Idealised Cross section at drill holes EL25RC1010 and 1011

HISTORICAL DRILLING RESULTS

Prior to the recently completed RC drilling at Electric Light, earlier explorers have drilled a total of 110 holes for approximately 5,100m at Electric Light between 1980 and 2010. The Company is currently reviewing all of the historic Electric Light data and geological interpretations and drill hole locations and gold assays for the historical holes have been included in this announcement for completeness.

The historic drilling comprised Percussion holes, Reverse Circulation holes and Diamond holes. All the holes were assayed for gold, and multielement analysis were completed on approximately 30% of the holes drilled. The holes were drilled by several different explorers and a table detailing the companies which undertook the drilling, the type of drilling, the number of holes completed, and meters drilled is included as Table 3.

Table 3: Historical Drilling Details

Deposit	Company	Year	Diamond		RC		Percussion	
			holes	m	holes	m	holes	m
Electric Light ML	CAS - Castlegold Pty Ltd	1985	9	265			1	60
	SED - Sedimentary Holding Ltd	1990-4			38	1639	41	1258
	RGC - Renison Goldfield Group	1995	1	171	12	1482		
	DRAU -Deutsche Rohstoff Australia Pty Ltd	2010	2	103	6	130		
		2012					3*	
	Total		12	539	56	3251	42	1318

Significant gold assays from the historical drilling are presented in Table 4. The parameters for all the previous holes drilled at Electric Light are shown in Appendix 3. The drill hole gold assays for all the holes which are located outside the mined-out open pit are included in Appendix 4.

For personal use only

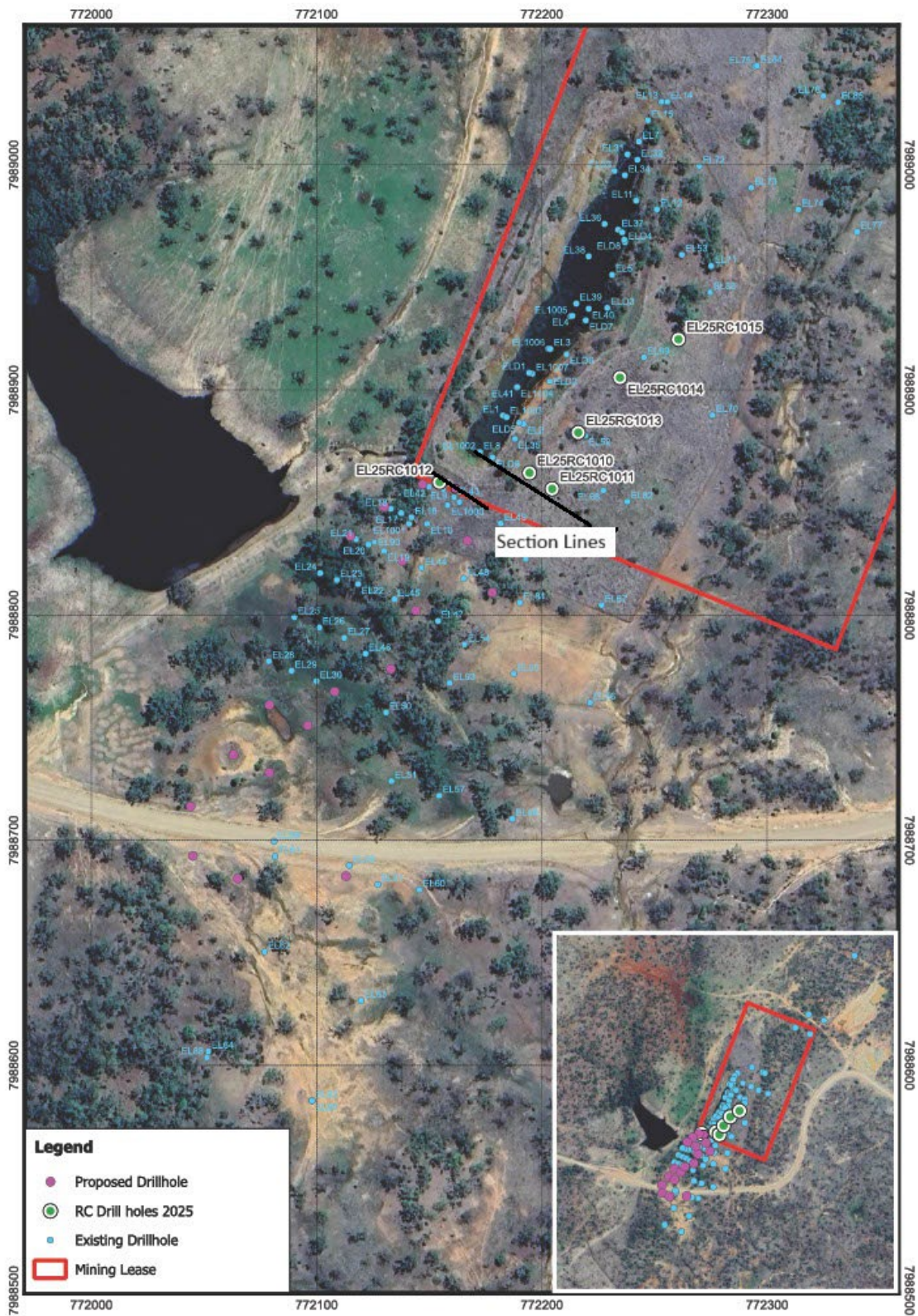


Figure 4: Electric Light – Current and Historical Drill Hole Locations

Table 4: Historical Drilling Results 1980 to 2011

Hole No.	From	To	Interval	Au g/t
EL10	37	42	5	4.69
EL1000	30	51	21	4.77
EL1001	32	42	10	5.99
EL1002	8	16	8	7.60
EL16	21	24	3	14.39
EL16	28	48	20	5.85
EL17	20	32	12	12.27
EL18	15	23	8	5.72
EL19	28	55	27	4.72
EL20	20	41	21	8.40
EL21	13	19	6	5.82
EL23	16	31	15	6.29
EL26	22	33	11	13.16
EL29	15	30	15	5.78
EL42	14	19	5	7.98
EL43	25	50	25	3.48
EL44	18	65	47	0.88
EL48	75	90	15	15.48#
EL49	72	74	2	4.23
EL78	9	11	2	2.75
EL89	60	72	12	3.72
EL90	16	22	6	7.80
EL91	140	150	10	2.24
EL93	102	120	18	2.08

The Historical Intercept have been calculated using a 0.50 g/t COG grade with up to 3 meters of internal dilution, no top cut has been applied. Intercepts for holes which were drilled within the Electric Light pit limits have not been included as the area has been mined out and the results are not germane to this document. All the data below is taken from the historical databases of previous explorers, and all the information can be accessed via the Queensland Department of Resources open file data in GeoRes Globe.

Due to the dip of the mineralised zone and the orientation of the drilling, it is believed that the holes intersected the mineralisation perpendicular to the dip and therefore the reported intersects are the true widths.

Hole EL48 has been highlighted as the average is skewed by a 1m interval that assayed at 195 g/t Au

ELECTRIC LIGHT FUTURE WORK

The gold mineralised zone at Electric Light dips to the southeast and plunges to the southwest. Further drilling has been planned to test both the down dip and down plunge extent of the gold mineralisation. Drill holes have also been designed to infill between historical drill holes which intersected zones of significant gold mineralisation. This additional drilling is planned to comprise 10 to 15 RC holes for approximately 1,500m. The location of the planned holes at Electric Light are presented in Figure 2.

In addition to the RC drilling, two PQ diamond drill holes are planned to obtain core for metallurgical test work with all drilling planned to commence in November.

This Report is Authorised by the Board of Directors

For further information, please contact:

Stephen Bizzell (Chairman) or Brad Sampson (CEO)

P (07) 3108 3500

E admin@savannahgoldfields.com

Competent Persons Statements

The information in this report that relates to the Exploration Sampling and Exploration Results at Electric Light is based on information compiled by Mr Patrick Smith, a Competent Person who is a Member of the Australian Institute of Mining and Metallurgy. Mr Smith is the owner and sole Director of PSGS Pty Ltd and is contracted to Savannah Goldfields Ltd as their Exploration Manager. Mr Smith confirms there is no potential for a conflict of interest in acting as the Competent Person. Mr Smith has sufficient experience that is relevant to the style of mineralisation and type of deposits under consideration and to the activity being undertaken to qualify as a Competent Person as defined in the 2012 Edition of the "Australasian Code for Reporting of Exploration Results, Mineral Resources and Ore Reserves". Mr Smith consents to the inclusion of this information in the form and context in which it appears in this release.

Prior drilling results contained within this document have been reviewed and compiled by the Competent Person and reported in accordance with JORC Code 2012.

The information in this report that relates to Mineral Resource is based on information compiled by Mr John Horton who is a Chartered Fellow of the Australian Institute of Mining and Metallurgy and a Member of the Australian Institute of Geoscientists. Mr Horton is a full-time employee of ResEval Pty Ltd and has sufficient experience which is relevant to the style of mineralisation and type of deposit under consideration and to the activity which they are undertaking to qualify as a Competent Person as defined in the 2012 Edition of the 'Australasian Code for Reporting of Exploration Results, Mineral Resource and Ore Reserves.' Mr Horton consents to the inclusion in the report of the matters based on his information in the form and context in which it appears.

The information relating to Mineral Resource at the Georgetown Gold Project is extracted from ASX Announcements of 10 October 2025 titled "*Mineral Resource Update for Jubilee Plunger Deposit*" and of 7 February 2022 titled "*Georgetown Project Mineral Resources*".

The reports are available to view on the Savannah's website www.savannahgoldfields.com. The reports were issued in accordance with the 2012 Edition of the JORC Australasian Code for Reporting of Exploration Results, Mineral Resource and Ore Reserves 2012. The Company confirms it is not aware of any new information or data that materially affects the information included in the original market announcement and, in the case of estimates of Mineral Resource or Ore Reserves, that all material assumptions and technical parameters underpinning the estimates in the relevant market announcement continue to apply and have not materially changed. The company confirms that the form and context in which the Competent Persons' findings are presented have not been materially modified from the original market announcements.

Appendix 1: Georgetown Inferred Mineral Resource

Deposit	Classification	Tonnage	Gold Grade	Silver Grade	Density	Contained Gold *	Tenement
		kt	g/t	g/t	t/m ³	oz Au	
Red Dam #	Inferred	201	5.7	12	2.89	37,000	ML30203 EPM9158
Electric Light#	Inferred	388	3.7	0.7	2.59	46,000	ML3548 EPM8545
Jubilee Plunger	Indicated	98	2.4	15.9	2.47	8,000	ML3374
	Inferred	198	2.0	17.0	2.40	12,000	
	Total	296	2.1	16.6	2.42	20,000	
Big Reef#	Inferred	107	3.0	NA~	2.44	10,000	ML3278 ML3279 ML3280 EPM15547
Union#	Inferred	167	3.2	NA~	2.4	17,000	ML3366
Total Mineral Resource	Indicated	98	2.4			8,000	
	Inferred	1,061	3.6			123,000	
	Total	1,159	3.5			131,000	

Mineral Resources reported at a cut of grade of 1.0 g/t Au.

ounces Au rounded and reported to nearest 1,000 ~ Ag assays for Big Reef and Union are limited and Ag cannot be estimated
Further details of the Mineral Resource estimate are contained in Savannah's ASX announcement of 7 February 2022

Appendix 2: Electric Light Individual Drill Hole Assay Results

Hole Number	Sample Number	From_Depth (m)	To_Depth (m)	Au (g/t)	Ag (g/t)	As (ppm)	Pb (ppm)	S %	Zn (ppm)	Recovery (%)
EL25RC1010	V53520	0	1	0.07	0.18	146	34	0.00	119	40
EL25RC1010	V53521	1	2	0.02	0.13	71	24	0.00	64	60
EL25RC1010	V53522	2	3	0.03	0.18	60	21	0.00	96	80
EL25RC1010	V53523	3	4	0.03	0.16	103	22	0.00	69	100
EL25RC1010	V53524	4	5	0.09	0.17	84	50	0.00	111	100
EL25RC1010	V53525	5	6	0.01	0.17	56	36	0.00	49	100
EL25RC1010	V53526	6	7	0.03	0.23	125	28	0.00	174	100
EL25RC1010	V53527	7	8	0.03	0.39	111	36	0.00	144	100
EL25RC1010	V53528	8	9	x	0.22	61	36	0.00	91	100
EL25RC1010	V53529	9	10	x	0.17	53	33	0.00	88	100
EL25RC1010	V53530	10	11	x	0.14	26	37	0.00	52	100
EL25RC1010	V53531	11	12	x	0.13	8	37	0.00	47	100
EL25RC1010	V53532	12	13	0.01	0.13	21	27	0.00	75	100
EL25RC1010	V53533	13	14	0.01	0.11	26	33	0.00	78	100
EL25RC1010	V53534	14	15	x	0.09	18	28	0.00	100	100
EL25RC1010	V53535	15	16	0.01	0.08	29	18	0.00	60	100
EL25RC1010	V53536	16	17	x	0.11	19	32	0.00	65	100
EL25RC1010	V53537	17	18	x	0.11	12	26	0.00	41	100
EL25RC1010	V53538	18	19	x	0.14	23	32	0.00	31	100
EL25RC1010	V53539	19	20	0.01	0.13	39	25	0.07	39	100
EL25RC1010	V53540	20	21	0.17	0.41	125	15	0.72	96	100
EL25RC1010	V53541	21	22	0.12	0.31	67	22	0.54	91	100
EL25RC1010	V53542	22	23	0.07	0.24	46	18	0.45	115	100

EL25RC1010	V53543	23	24	0.05	0.18	38	21	0.40	143	100
EL25RC1010	V53544	24	25	0.28	0.46	99	32	0.91	108	100
EL25RC1010	V53545	25	26	0.13	0.27	58	14	0.47	70	100
EL25RC1010	V53546	26	27	0.07	0.27	51	18	0.39	88	100
EL25RC1010	V53547	27	28	0.10	0.58	58	40	0.53	105	100
EL25RC1010	V53548	28	29	0.08	0.27	42	19	0.43	103	100
EL25RC1010	V53549	29	30	0.06	0.52	74	20	0.48	102	100
EL25RC1010	V53550	30	31	0.09	0.47	80	35	0.51	124	100
EL25RC1010	V53551	31	32	0.05	0.31	95	25	0.52	117	100
EL25RC1010	V53552	32	33	1.72	13.65	26,821	13,577	8.59	478	100
EL25RC1010	V53553	33	34	1.11	5.75	9,345	2,029	5.29	1866	100
EL25RC1010	V53554	34	35	0.76	2.62	6,130	686	3.19	2346	100
EL25RC1010	V53555	35	36	0.81	4.57	14,287	1,589	3.69	5049	100
EL25RC1010	V53556	36	37	0.33	2.15	5,600	538	1.58	1321	100
EL25RC1010	V53557	37	38	0.60	2.91	10,134	1,162	3.29	4174	100
EL25RC1010	V53558	38	39	0.95	2.19	8,675	598	2.70	1492	100
EL25RC1010	V53559	39	40	0.05	1.68	564	114	0.59	331	100
EL25RC1010	V53560	40	41	0.28	5.52	2,187	1,777	2.31	3481	100
EL25RC1010	V53561	41	42	0.13	1.31	2,574	255	1.04	575	100
EL25RC1010	V53562	42	43	0.80	6.62	18,979	2,296	3.77	3523	100
EL25RC1010	V53563	43	44	0.15	3.46	5,025	670	1.30	1260	100
EL25RC1010	V53564	44	45	0.03	0.75	751	184	0.35	498	100
EL25RC1010	V53565	45	46	0.16	1.40	2,776	523	0.95	1478	100
EL25RC1010	V53566	46	47	0.15	1.05	3,575	336	0.85	1081	100
EL25RC1010	V53567	47	48	0.01	0.50	317	49	0.28	223	100
EL25RC1010	V53568	48	49	0.01	0.43	232	33	0.18	198	100
EL25RC1010	V53569	49	50	0.06	3.15	550	856	0.87	1152	100
EL25RC1010	V53570	50	51	0.02	3.57	185	367	0.96	801	100
EL25RC1010	V53571	51	52	x	1.15	46	75	0.33	234	100
EL25RC1010	V53572	52	53	x	0.76	50	114	0.26	347	100
EL25RC1010	V53573	53	54	x	0.52	55	38	0.24	277	100
EL25RC1010	V53574	54	55	x	0.37	36	15	0.18	143	100
EL25RC1010	V53575	55	56	0.01	0.50	116	63	0.30	135	100
EL25RC1010	V53576	56	57	x	0.27	29	26	0.25	143	100
EL25RC1010	V53577	57	58	0.04	0.36	49	127	0.42	694	100
EL25RC1010	V53578	58	59	0.16	0.36	32	141	0.33	279	100
EL25RC1010	V53579	59	60	x	0.10	25	18	0.16	152	100
EL25RC1010	V53580	60	61	x	0.18	39	24	0.14	184	100
EL25RC1010	V53581	61	62	x	0.15	21	14	0.14	166	100
EL25RC1010	V53582	62	63	0.02	0.18	143	19	0.17	166	100
EL25RC1010	V53583	63	64	x	0.07	12	11	0.12	151	100
EL25RC1010	V53584	64	65	0.04	0.31	127	207	0.22	330	100
EL25RC1010	V53585	65	66	x	0.44	31	19	0.21	120	100
EL25RC1010	V53586	66	67	x	0.07	18	11	0.16	137	100
EL25RC1010	V53587	67	68	x	0.14	10	8	0.13	127	100

EL25RC1010	V53588	68	69	0.02	0.37	583	102	0.34	1689	100
EL25RC1010	V53589	69	70	x	0.06	12	9	0.16	132	100
EL25RC1010	V53590	70	71	x	0.05	10	8	0.15	154	100
EL25RC1010	V53591	71	72	x	0.00	10	9	0.12	162	100
EL25RC1010	V53592	72	73	x	0.11	17	8	0.18	110	100
EL25RC1010	V53593	73	74	x	0.18	14	7	0.20	86	100
EL25RC1010	V53594	74	75	x	0.06	13	4	0.39	77	100
EL25RC1010	V53595	75	76	x	0.06	8	2	0.42	77	100
EL25RC1010	V53596	76	77	x	0.13	11	3	0.42	68	100
EL25RC1010	V53597	77	78	x	0.20	18	5	0.15	59	100
EL25RC1010	V53598	77	78	x	0.21	23	6	0.15	58	100
EL25RC1011	V53601	0	1	0.04	0.22	201	62	0.12	204	10
EL25RC1011	V53602	1	2	0.02	0.08	74	8	0.00	82	10
EL25RC1011	V53603	2	3	0.01	0.09	28	8	0.00	43	40
EL25RC1011	V53604	3	4	0.01	0.12	21	6	0.00	27	60
EL25RC1011	V53605	4	5	0.01	0.14	29	11	0.00	20	100
EL25RC1011	V53606	5	6	0.01	0.11	29	8	0.00	16	100
EL25RC1011	V53607	6	7	x	0.14	39	8	0.00	60	100
EL25RC1011	V53608	7	8	x	0.09	37	11	0.00	31	100
EL25RC1011	V53609	8	9	x	0.11	24	10	0.00	18	100
EL25RC1011	V53610	9	10	x	0.09	29	9	0.00	17	100
EL25RC1011	V53611	10	11	0.02	0.13	70	9	0.00	16	100
EL25RC1011	V53612	11	12	x	0.10	28	8	0.00	18	100
EL25RC1011	V53613	12	13	0.01	0.11	52	7	0.00	70	100
EL25RC1011	V53614	13	14	x	0.09	24	9	0.00	31	100
EL25RC1011	V53615	14	15	0.08	0.26	123	90	0.00	59	100
EL25RC1011	V53616	15	16	x	0.14	25	23	0.00	32	100
EL25RC1011	V53617	16	17	x	0.11	11	9	0.00	44	100
EL25RC1011	V53618	17	18	0.01	0.15	16	23	0.00	61	100
EL25RC1011	V53619	18	19	x	0.17	18	33	0.00	135	100
EL25RC1011	V53620	19	20	x	0.18	17	21	0.10	116	100
EL25RC1011	V53621	20	21	x	0.15	9	25	0.00	70	100
EL25RC1011	V53622	21	22	x	0.15	11	30	0.07	91	100
EL25RC1011	V53623	22	23	0.01	0.18	18	34	0.10	73	100
EL25RC1011	V53624	23	24	x	0.09	11	27	0.00	65	100
EL25RC1011	V53625	24	25	x	0.11	13	26	0.00	88	100
EL25RC1011	V53626	25	26	x	0.08	14	28	0.00	92	100
EL25RC1011	V53627	26	27	x	0.12	16	25	0.06	83	100
EL25RC1011	V53628	27	28	x	0.10	12	28	0.05	89	100
EL25RC1011	V53629	28	29	0.04	0.24	28	38	0.18	108	100
EL25RC1011	V53630	29	30	x	0.17	22	20	0.12	86	100
EL25RC1011	V53631	30	31	0.04	0.15	24	62	0.16	148	100
EL25RC1011	V53632	31	32	x	0.10	19	25	0.07	89	100
EL25RC1011	V53633	32	33	0.07	0.41	68	36	0.44	82	100

EL25RC1011	V53634	33	34	x	0.09	15	21	0.00	78	100
EL25RC1011	V53635	34	35	0.03	0.00	10	19	0.00	78	100
EL25RC1011	V53636	35	36	0.04	0.26	40	35	0.27	106	100
EL25RC1011	V53637	36	37	0.13	0.70	132	49	1.05	150	100
EL25RC1011	V53638	37	38	0.03	0.21	41	21	0.18	84	100
EL25RC1011	V53639	38	39	0.09	0.45	155	30	0.36	61	100
EL25RC1011	V53640	39	40	x	0.96	62	13	0.14	126	100
EL25RC1011	V53641	40	41	0.03	0.43	141	55	0.14	178	100
EL25RC1011	V53642	41	42	0.18	0.50	89	70	0.40	141	100
EL25RC1011	V53643	42	43	0.11	0.35	55	130	0.20	287	100
EL25RC1011	V53644	43	44	0.02	0.13	30	38	0.08	119	100
EL25RC1011	V53645	44	45	0.09	0.44	65	48	0.25	109	100
EL25RC1011	V53646	45	46	0.11	0.48	86	35	0.49	78	100
EL25RC1011	V53647	46	47	0.05	0.16	37	25	0.14	87	100
EL25RC1011	V53648	47	48	0.04	0.17	36	16	0.25	33	100
EL25RC1011	V53649	48	49	0.02	0.16	36	10	0.23	49	100
EL25RC1011	V53650	49	50	0.06	0.24	74	12	0.46	87	100
EL25RC1011	V53651	50	51	0.05	0.35	51	44	0.53	126	100
EL25RC1011	V53652	51	52	0.02	0.20	39	9	0.54	102	100
EL25RC1011	V53653	52	53	0.02	0.19	31	12	0.66	86	100
EL25RC1011	V53654	53	54	0.08	0.23	55	11	0.70	87	100
EL25RC1011	V53655	54	55	0.34	0.29	92	20	0.60	102	100
EL25RC1011	V53656	55	56	0.12	0.35	91	82	0.53	212	100
EL25RC1011	V53657	56	57	0.05	0.97	142	129	0.68	254	100
EL25RC1011	V53658	57	58	x	1.96	93	91	0.80	489	100
EL25RC1011	V53659	58	59	0.01	0.96	44	35	0.43	261	100
EL25RC1011	V53660	59	60	0.11	1.40	190	364	1.01	988	100
EL25RC1011	V53661	60	61	2.56	2.69	343	787	1.62	1515	100
EL25RC1011	V53662	61	62	0.03	0.76	74	194	0.48	299	100
EL25RC1011	V53663	62	63	x	0.36	26	86	0.23	184	100
EL25RC1011	V53664	63	64	0.03	0.80	519	37	0.78	211	100
EL25RC1011	V53665	64	65	0.11	0.98	154	106	0.85	394	100
EL25RC1011	V53666	65	66	0.01	1.11	64	144	0.47	324	100
EL25RC1011	V53667	66	67	x	0.10	14	7	0.14	242	100
EL25RC1011	V53668	67	68	x	0.09	19	7	0.16	116	100
EL25RC1011	V53669	68	69	0.09	0.96	936	137	0.92	473	100
EL25RC1011	V53670	69	70	0.17	0.76	731	80	0.87	649	100
EL25RC1011	V53671	70	71	0.29	1.04	737	162	0.98	1019	100
EL25RC1011	V53672	71	72	0.01	0.13	69	11	0.27	129	100
EL25RC1011	V53673	72	73	x	0.24	129	16	0.43	258	100
EL25RC1011	V53674	73	74	0.37	2.82	2560	861	1.70	1237	100
EL25RC1011	V53675	74	75	0.01	0.41	95	50	0.29	208	100
EL25RC1011	V53676	75	76	0.01	0.29	371	31	0.26	186	100
EL25RC1011	V53677	76	77	x	0.19	41	15	0.17	180	100
EL25RC1011	V53678	77	78	0.02	0.74	128	63	0.42	258	100

EL25RC1011	V53679	78	79	0.33	3.53	8597	1895	1.83	1112	100
EL25RC1011	V53680	79	80	0.54	1.78	14634	857	1.18	285	100
EL25RC1011	V53681	80	81	0.04	1.42	448	299	0.40	770	100
EL25RC1011	V53682	81	82	0.42	2.28	615	821	1.91	2901	100
EL25RC1011	V53683	82	83	0.02	0.29	176	57	0.36	193	100
EL25RC1011	V53684	83	84	0.02	0.23	81	47	0.20	169	100
EL25RC1011	V53685	84	85	x	0.08	47	12	0.26	129	100
EL25RC1011	V53686	85	86	x	0.28	28	15	0.14	101	100
EL25RC1011	V53687	86	87	x	0.06	13	5	0.23	100	100
EL25RC1011	V53688	87	88	x	0.00	17	6	0.23	123	100
EL25RC1011	V53689	88	89	x	0.49	19	8	0.20	118	100
EL25RC1011	V53690	89	90	x	0.00	9	4	0.18	119	100
EL25RC1011	V53691	90	91	x	0.00	12	5	0.27	115	100
EL25RC1011	V53692	91	92	x	0.22	27	23	0.22	114	100
EL25RC1011	V53693	92	93	x	0.06	13	5	0.24	108	100
EL25RC1011	V53694	93	94	x	0.00	8	3	0.32	98	100
EL25RC1011	V53695	94	95	x	0.44	54	8	0.34	93	100
EL25RC1011	V53696	95	96	x	0.10	12	3	0.26	89	100
EL25RC1012	V53700	0	1	0.11	0.20	201	121	0.00	133	20
EL25RC1012	V53701	1	2	0.02	0.12	97	44	0.00	114	20
EL25RC1012	V53702	2	3	0.03	0.15	77	37	0.00	106	40
EL25RC1012	V53703	3	4	0.01	0.19	25	17	0.00	103	60
EL25RC1012	V53704	4	5	0.02	0.22	32	29	0.00	158	70
EL25RC1012	V53705	5	6	0.03	0.21	107	21	0.00	134	80
EL25RC1012	V53706	6	7	0.05	0.54	120	263	0.00	858	100
EL25RC1012	V53707	7	8	0.15	0.88	197	104	0.00	347	100
EL25RC1012	V53708	8	9	0.09	0.34	103	31	0.00	108	100
EL25RC1012	V53709	9	10	0.06	0.25	120	11	0.00	83	100
EL25RC1012	V53710	10	11	0.06	0.48	339	19	0.00	282	100
EL25RC1012	V53711	11	12	0.03	0.37	140	71	0.07	312	100
EL25RC1012	V53712	12	13	0.08	0.89	222	1444	0.07	1466	100
EL25RC1012	V53713	13	14	5.96	2.89	658	1184	0.42	723	100
EL25RC1012	V53714	14	15	18.60	4.88	540	313	2.13	386	100
EL25RC1012	V53715	15	16	16.82	3.41	1089	465	2.76	458	100
EL25RC1012	V53716	16	17	14.80	3.55	3123	295	2.73	307	100
EL25RC1012	V53717	17	18	7.74	4.44	6315	178	2.66	569	100
EL25RC1012	V53718	18	19	2.99	3.92	546	120	1.22	260	100
EL25RC1012	V53719	19	20	2.56	0.97	367	75	0.76	281	100
EL25RC1012	V53720	20	21	0.25	0.19	133	17	0.38	139	100
EL25RC1012	V53721	21	22	0.47	0.21	365	15	0.41	130	100
EL25RC1012	V53722	22	23	0.04	0.05	27	9	0.15	135	100
EL25RC1012	V53723	23	24	0.02	0.06	24	9	0.20	122	100
EL25RC1012	V53724	24	25	x	0.00	16	5	0.17	120	100
EL25RC1012	V53725	25	26	x	0.08	23	7	0.16	107	100

EL25RC1012	V53726	26	27	x	0.35	26	5	0.53	109	100
EL25RC1012	V53727	27	28	0.01	0.08	16	5	0.24	108	100
EL25RC1012	V53728	28	29	0.01	0.00	15	6	0.17	109	100
EL25RC1012	V53729	29	30	0.04	0.12	22	10	0.23	120	100
EL25RC1013	V53731	0	1	0.24	0.20	57	21	0.00	66	10
EL25RC1013	V53732	1	2	0.01	0.07	28	9	0.00	74	20
EL25RC1013	V53733	2	3	0.01	0.12	31	26	0.00	71	40
EL25RC1013	V53734	3	4	0.01	0.13	25	35	0.00	111	60
EL25RC1013	V53735	4	5	x	0.22	31	25	0.00	97	100
EL25RC1013	V53736	5	6	0.01	0.21	38	40	0.00	154	100
EL25RC1013	V53737	6	7	0.02	0.25	49	20	0.00	248	10
EL25RC1013	V53738	7	8	0.01	0.28	48	19	0.00	132	50
EL25RC1013	V53739	8	9	0.01	0.11	89	12	0.00	116	50
EL25RC1013	V53740	9	10	0.04	0.36	109	49	0.00	198	50
EL25RC1013	V53741	10	11	0.02	0.30	72	30	0.00	145	50
EL25RC1013	V53742	11	12	0.01	0.21	55	16	0.00	91	100
EL25RC1013	V53743	12	13	0.01	0.18	108	12	0.00	95	100
EL25RC1013	V53744	13	14	0.03	0.36	104	17	0.00	59	100
EL25RC1013	V53745	14	15	0.01	0.30	132	12	0.00	99	100
EL25RC1013	V53746	15	16	x	0.30	39	5	0.00	104	100
EL25RC1013	V53747	16	17	x	0.14	49	3	0.00	127	100
EL25RC1013	V53748	17	18	x	0.16	30	5	0.00	104	100
EL25RC1013	V53749	18	19	0.01	0.30	68	9	0.00	135	100
EL25RC1013	V53750	19	20	x	0.17	51	5	0.38	144	100
EL25RC1013	V53751	20	21	x	0.32	99	6	0.47	129	100
EL25RC1013	V53752	21	22	0.02	0.36	44	18	0.05	86	100
EL25RC1013	V53753	22	23	0.12	0.30	783	24	0.29	78	100
EL25RC1013	V53754	23	24	0.10	0.27	136	11	0.52	75	100
EL25RC1013	V53755	24	25	0.03	0.24	60	9	0.42	108	100
EL25RC1013	V53756	25	26	0.05	0.31	71	10	0.57	122	100
EL25RC1013	V53757	26	27	0.04	0.24	63	9	0.56	109	100
EL25RC1013	V53758	27	28	0.04	0.31	63	10	0.61	114	100
EL25RC1013	V53759	28	29	0.03	0.17	48	11	0.41	68	100
EL25RC1013	V53760	29	30	0.03	0.13	44	15	0.42	86	100
EL25RC1013	V53761	30	31	0.03	0.19	48	9	0.54	86	100
EL25RC1013	V53762	31	32	0.02	0.18	35	12	0.38	85	100
EL25RC1013	V53763	32	33	0.02	0.19	42	11	0.47	90	100
EL25RC1013	V53764	33	34	0.04	0.33	46	17	0.54	103	100
EL25RC1013	V53765	34	35	0.03	0.25	54	10	0.54	109	100
EL25RC1013	V53766	35	36	0.05	0.26	81	12	0.70	98	100
EL25RC1013	V53767	36	37	0.05	0.29	74	15	0.58	99	100
EL25RC1013	V53768	37	38	0.04	0.31	64	12	0.65	112	100
EL25RC1013	V53769	38	39	0.03	0.21	39	11	0.52	104	100
EL25RC1013	V53770	39	40	0.20	0.30	71	13	0.77	135	100

EL25RC1013	V53771	40	41	0.05	0.30	64	16	0.70	117	100
EL25RC1013	V53772	41	42	0.03	0.29	51	19	0.64	118	100
EL25RC1013	V53773	42	43	0.07	0.25	56	10	0.46	109	100
EL25RC1013	V53774	43	44	0.03	0.32	44	11	0.33	96	100
EL25RC1013	V53775	44	45	1.64	5.77	2994	1815	5.14	1843	100
EL25RC1013	V53776	45	46	0.66	3.08	13238	687	2.24	1257	100
EL25RC1013	V53777	46	47	1.19	9.51	12227	1390	4.50	5171	100
EL25RC1013	V53778	47	48	0.10	3.43	885	307	1.00	1014	100
EL25RC1013	V53779	48	49	0.05	1.81	307	200	0.70	894	100
EL25RC1013	V53780	49	50	0.02	1.69	162	63	0.49	189	100
EL25RC1013	V53781	50	51	0.01	1.21	61	67	0.47	218	100
EL25RC1013	V53782	51	52	0.01	0.44	35	70	0.23	220	100
EL25RC1013	V53783	52	53	x	0.15	28	14	0.23	112	100
EL25RC1013	V53784	53	54	x	0.21	23	14	0.22	118	100
EL25RC1013	V53785	54	55	0.01	0.28	55	22	0.18	156	100
EL25RC1013	V53786	55	56	x	0.18	21	15	0.13	163	100
EL25RC1013	V53787	56	57	x	0.21	21	28	0.15	206	100
EL25RC1013	V53788	57	58	x	0.08	12	15	0.12	168	100
EL25RC1013	V53789	58	59	0.02	0.26	63	21	0.13	188	100
EL25RC1013	V53790	59	60	0.01	0.13	70	21	0.14	170	100

EL25RC1014	V53794	0	1	0.10	0.49	266	26	0.00	122	20
EL25RC1014	V53795	1	2	0.04	0.24	137	12	0.00	116	20
EL25RC1014	V53796	2	3	0.01	0.23	64	9	0.00	121	20
EL25RC1014	V53797	3	4	0.01	0.38	132	8	0.00	127	100
EL25RC1014	V53798	4	5	0.01	0.32	48	12	0.00	39	100
EL25RC1014	V53799	5	6	0.01	0.19	70	17	0.00	70	100
EL25RC1014	V53800	6	7	0.03	0.19	467	20	0.00	106	100
EL25RC1014	V53801	7	8	0.01	0.17	132	29	0.00	102	100
EL25RC1014	V53802	8	9	x	0.21	65	23	0.00	80	100
EL25RC1014	V53803	9	10	0.01	0.36	91	12	0.00	113	100
EL25RC1014	V53804	10	11	x	0.41	83	11	0.00	153	100
EL25RC1014	V53805	11	12	0.02	0.73	130	12	0.00	136	100
EL25RC1014	V53806	12	13	0.01	0.37	212	7	0.00	123	80
EL25RC1014	V53807	13	14	0.02	0.54	299	10	0.00	148	100
EL25RC1014	V53808	14	15	0.21	0.76	2133	60	0.26	196	100
EL25RC1014	V53809	15	16	0.18	0.92	2352	42	0.32	220	100
EL25RC1014	V53810	16	17	0.01	0.31	169	10	0.08	123	100
EL25RC1014	V53811	17	18	0.06	1.05	309	13	0.08	118	100
EL25RC1014	V53812	18	19	0.37	1.84	1943	50	0.39	315	80
EL25RC1014	V53813	19	20	1.25	4.58	3740	770	0.33	1725	100
EL25RC1014	V53814	20	21	0.23	1.13	3800	163	0.58	1073	100
EL25RC1014	V53815	21	22	0.06	0.51	414	36	0.18	306	100
EL25RC1014	V53816	22	23	0.30	0.85	1874	52	0.54	208	100
EL25RC1014	V53817	23	24	0.02	0.32	128	16	0.11	140	100

EL25RC1014	V53818	24	25	0.05	0.23	80	10	0.62	66	80
EL25RC1014	V53819	25	26	0.87	0.62	128	16	1.07	64	100
EL25RC1014	V53820	26	27	0.46	0.26	70	22	0.52	103	100
EL25RC1014	V53821	27	28	0.03	0.21	36	40	0.49	162	100
EL25RC1014	V53822	28	29	0.04	0.28	51	14	0.59	108	100
EL25RC1014	V53823	29	30	0.08	0.32	73	25	0.75	145	100
EL25RC1014	V53824	30	31	0.02	0.20	32	15	0.53	108	100
EL25RC1014	V53825	31	32	0.06	0.36	73	24	0.91	106	100
EL25RC1014	V53826	32	33	0.12	0.43	95	26	1.04	120	100
EL25RC1014	V53827	33	34	0.09	0.37	46	25	0.62	144	100
EL25RC1014	V53828	34	35	0.01	0.17	31	24	0.50	126	100
EL25RC1014	V53829	35	36	0.04	0.49	52	97	0.67	113	100
EL25RC1014	V53830	36	37	0.04	0.26	49	18	0.59	134	100
EL25RC1014	V53831	37	38	0.02	0.23	34	27	0.54	115	100
EL25RC1014	V53832	38	39	0.01	0.21	26	18	0.54	116	100
EL25RC1014	V53833	39	40	0.01	0.13	25	22	0.44	102	100
EL25RC1014	V53834	40	41	0.03	0.16	34	11	0.36	98	100
EL25RC1014	V53835	41	42	0.20	0.22	80	11	0.52	99	100
EL25RC1014	V53836	42	43	0.11	0.18	89	12	0.50	98	100
EL25RC1014	V53837	43	44	0.99	0.64	316	30	1.78	71	100
EL25RC1014	V53838	44	45	0.09	0.32	73	58	0.52	104	100
EL25RC1014	V53839	45	46	0.01	0.24	20	19	0.39	124	100
EL25RC1014	V53840	46	47	0.04	0.47	49	110	0.43	258	100
EL25RC1014	V53841	47	48	0.05	1.10	78	343	0.57	246	100
EL25RC1014	V53842	48	49	0.04	0.95	73	617	0.48	692	100
EL25RC1014	V53843	49	50	0.01	1.08	27	416	0.25	708	100
EL25RC1014	V53844	50	51	x	0.44	10	53	0.21	144	100
EL25RC1014	V53845	51	52	0.01	0.42	14	51	0.22	144	100
EL25RC1014	V53846	52	53	0.02	1.12	46	277	0.38	575	100
EL25RC1014	V53847	53	54	0.01	0.52	20	65	0.25	230	100

EL25RC1015	V53850	0	1	0.81	1.07	1253	111	0.10	171	10
EL25RC1015	V53851	1	2	0.66	0.63	1191	83	0.09	141	10
EL25RC1015	V53852	2	3	0.23	0.27	336	44	0.00	106	80
EL25RC1015	V53853	3	4	0.03	0.17	62	14	0.00	66	100
EL25RC1015	V53854	4	5	0.01	0.15	19	30	0.00	52	100
EL25RC1015	V53855	5	6	0.01	0.17	18	35	0.00	37	10
EL25RC1015	V53856	6	7	0.01	0.19	44	27	0.00	73	10
EL25RC1015	V53857	7	8	x	0.19	22	35	0.00	68	100
EL25RC1015	V53858	8	9	0.01	0.19	28	34	0.00	72	100
EL25RC1015	V53859	9	10	0.01	0.18	32	26	0.00	82	100
EL25RC1015	V53860	10	11	x	0.14	29	30	0.00	80	100
EL25RC1015	V53861	11	12	x	0.21	55	33	0.00	85	100
EL25RC1015	V53862	12	13	0.03	0.27	59	43	0.00	79	100
EL25RC1015	V53863	13	14	0.01	0.32	64	31	0.00	120	100

EL25RC1015	V53864	14	15	0.02	0.12	39	38	0.00	161	100
EL25RC1015	V53865	15	16	0.04	0.26	69	171	0.00	407	100
EL25RC1015	V53866	16	17	0.01	0.28	25	30	0.00	165	100
EL25RC1015	V53867	17	18	0.01	0.29	20	21	0.05	150	100
EL25RC1015	V53868	18	19	0.14	0.44	140	153	0.06	287	100
EL25RC1015	V53869	19	20	0.26	0.98	281	102	0.13	329	100
EL25RC1015	V53870	20	21	0.01	0.26	22	20	0.13	131	100
EL25RC1015	V53871	21	22	x	0.14	18	25	0.09	95	100
EL25RC1015	V53872	22	23	0.05	0.25	70	36	0.28	81	100
EL25RC1015	V53873	23	24	0.03	0.48	61	19	0.28	100	100
EL25RC1015	V53874	24	25	0.95	2.83	774	297	4.19	286	100
EL25RC1015	V53875	25	26	0.37	1.97	584	136	2.55	267	100
EL25RC1015	V53876	26	27	0.04	0.76	97	59	0.49	252	100
EL25RC1015	V53877	27	28	0.07	0.70	129	58	0.63	158	100
EL25RC1015	V53878	28	29	0.09	0.50	140	62	0.66	85	100
EL25RC1015	V53879	29	30	0.03	0.93	40	42	0.37	222	100
EL25RC1015	V53880	30	31	0.03	0.29	26	18	0.17	157	100
EL25RC1015	V53881	31	32	0.05	0.29	43	13	0.24	136	100
EL25RC1015	V53882	32	33	x	0.15	10	7	0.11	122	100
EL25RC1015	V53883	33	34	x	0.14	7	6	0.07	133	100
EL25RC1015	V53884	34	35	x	0.20	10	10	0.06	129	100
EL25RC1015	V53885	35	36	0.07	0.36	35	16	0.31	135	100
EL25RC1015	V53886	36	37	0.01	0.20	13	9	0.14	134	100
EL25RC1015	V53887	37	38	0.01	0.18	11	12	0.08	130	100
EL25RC1015	V53888	38	39	0.88	0.94	50	76	0.42	143	100
EL25RC1015	V53889	39	40	0.07	0.32	41	12	0.23	57	100
EL25RC1015	V53890	40	41	0.09	0.42	42	15	0.56	67	100
EL25RC1015	V53891	41	42	0.61	0.55	87	56	0.75	128	100
EL25RC1015	V53892	42	43	0.10	0.35	87	29	0.93	227	100
EL25RC1015	V53893	43	44	0.03	0.18	42	23	0.50	109	100
EL25RC1015	V53894	44	45	0.03	0.16	34	13	0.61	61	100
EL25RC1015	V53895	45	46	0.02	0.18	24	18	0.32	86	100
EL25RC1015	V53896	46	47	0.04	0.30	41	62	0.72	120	100
EL25RC1015	V53897	47	48	0.01	0.11	25	16	0.36	86	100
EL25RC1015	V53898	48	49	0.09	0.20	50	14	0.73	95	100
EL25RC1015	V53899	49	50	0.01	0.15	23	11	0.42	94	100
EL25RC1015	V53900	50	51	0.01	0.17	25	14	0.52	122	100
EL25RC1015	V53901	51	52	0.02	0.15	31	13	0.41	111	100
EL25RC1015	V53902	52	53	0.01	0.10	13	33	0.25	84	100
EL25RC1015	V53903	53	54	0.46	0.37	127	20	1.23	88	100
EL25RC1015	V53904	54	55	0.01	0.14	19	11	0.41	102	100
EL25RC1015	V53905	55	56	0.28	0.17	55	12	0.59	81	100
EL25RC1015	V53906	56	57	0.75	0.29	43	16	0.53	99	100
EL25RC1015	V53907	57	58	0.02	0.14	17	16	0.41	118	100
EL25RC1015	V53908	58	59	0.03	0.24	27	24	0.41	119	100

EL25RC1015	V53909	59	60	0.03	0.26	38	50	0.70	110	100
EL25RC1015	V53910	60	61	0.01	0.25	68	53	0.40	169	100
EL25RC1015	V53911	61	62	0.04	0.25	97	33	0.42	117	100
EL25RC1015	V53912	62	63	0.01	0.16	46	12	0.21	74	100
EL25RC1015	V53913	63	64	0.07	0.41	75	54	0.48	148	100
EL25RC1015	V53914	64	65	0.03	0.50	46	287	0.38	351	100
EL25RC1015	V53915	65	66	0.05	1.58	71	557	0.75	4155.00	100
EL25RC1015	V53916	66	67	0.11	2.62	76	2479	0.85	3638.00	100
EL25RC1015	V53917	67	68	0.03	1.15	57	299	0.57	473.00	100
EL25RC1015	V53918	68	69	0.01	1.19	42	92	0.36	269.00	100
EL25RC1015	V53919	69	70	0.01	1.06	31	113	0.38	329.00	100
EL25RC1015	V53920	70	71	x	0.50	21	65	0.25	304	100
EL25RC1015	V53921	71	72	x	0.25	13	30	0.23	211	100
EL25RC1015	V53922	72	73	x	0.13	7	13	0.18	165	100
EL25RC1015	V53923	73	74	x	0.05	5	7	0.13	172	100
EL25RC1015	V53924	74	75	x	0.07	5	8	0.12	169	100
EL25RC1015	V53925	75	76	x	0.10	6	11	0.13	138	100
EL25RC1015	V53926	76	77	x	0.06	7	8	0.17	134	100
EL25RC1015	V53927	77	78	x	0.00	5	7	0.18	137	100
EL25RC1015	V53928	78	79	x	0.07	4	9	0.15	153	100
EL25RC1015	V53929	79	80	x	0.00	4	7	0.12	137	100
EL25RC1015	V53930	80	81	x	0.00	7	6	0.17	112	100
EL25RC1015	V53931	81	82	x	0.00	4	5	0.15	105	100
EL25RC1015	V53932	82	83	x	0.00	5	6	0.13	99	100
EL25RC1015	V53933	83	84	x	0.00	4	8	0.13	143	100
EL25RC1015	V53934	84	85	x	0.00	6	8	0.14	130	100
EL25RC1015	V53935	85	86	x	0.05	8	6	0.17	122	100
EL25RC1015	V53936	86	87	x	0.00	6	7	0.16	117	100
EL25RC1015	V53937	87	88	x	0.00	6	14	0.14	127	100
EL25RC1015	V53938	88	89	x	0.00	6	9	0.14	125	100
EL25RC1015	V53939	89	90	x	0.00	11	9	0.20	136	100
EL25RC1015	V53940	86	87	x	0.05	7	8	0.17	121	100
EL25RC1015	V53941	44	45	0.03	0.15	35	12	0.69	66	100
EL25RC1015	V53942	80	81	x	0.00	5	6	0.13	101	100

Appendix 3 Historic Drill Hole Parameters

Hole_ID	Hole_Type	Dip	NAT_Azim	Max_Depth	NAT_East	NAT_North	NAT_RL	Company	Year Drilled	Comments
EL01	PERC	-60	292	19.00	772182.65	7988888.67	320.37	SED	1990	Au assay results in Appendix 2
EL02	PERC	-60	298	35.00	772191.87	7988884.83	320.37	SED	1992	Inside open pit - Assay Results not reported
EL03	PERC	-50	292	22.00	772203.73	7988918.21	320.37	SED	1992	Inside open pit - Assay Results not reported
EL04	PERC	-50	292	20.00	772213.46	7988932.88	319.37	SED	1992	Inside open pit - Assay Results not reported
EL05	PERC	-50	283	45.50	772231.20	7988951.15	318.37	SED	1993	Inside open pit - Assay Results not reported
EL06	PERC	-80	283	25.00	772235.64	7988969.97	319.87	SED	1994	Inside open pit - Assay Results not reported
EL07	PERC	-60	289	17.00	772243.06	7989010.27	320.37	SED	1994	Inside open pit - Assay Results not reported
EL08	PERC	-60	284	15.00	772172.58	7988872.32	319.37	SED	1994	Inside open pit - Assay Results not reported
EL09	PERC	-60	290	30.00	772156.03	7988855.96	318.37	SED	1995	Au assay results in Appendix 2
EL10	PERC	-60	292	48.00	772149.04	7988840.48	318.37	SED	1990	Au assay results in Appendix 2
EL1000	PERC	-60	283	51.60	772158.13	7988848.78	318.68	DRAU	2010	Au assay results in Appendix 2
EL1001	PERC	-60	291	51.50	772141.05	7988840.46	317.62	DRAU	2010	Au assay results in Appendix 2
EL1002	PERC	-60	306	20.00	772171.99	7988872.39	320.09	DRAU	2010	Inside open pit - Assay Results not reported
EL1003	PERC	-60	291	20.00	772184.31	7988887.88	321.19	DRAU	2010	Inside open pit - Assay Results not reported
EL1004	PERC	-60	291	25.00	772189.00	7988901.20	321.72	DRAU	2010	Inside open pit - Assay Results not reported
EL1005	PERC	-60	291	20.00	772212.78	7988932.69	321.16	DRAU	2010	Inside open pit - Assay Results not reported
EL1006	PERC	-60	291	20.00	772202.87	7988918.32	321.78	DRAU	2010	Inside open pit - Assay Results not reported
EL1007	PERC	-60	291	25.00	772195.76	7988907.21	321.68	DRAU	2010	Inside open pit - Assay Results not reported
EL11	PERC	-60	289	20.00	772241.89	7988984.06	320.37	SED	1990	Inside open pit - Assay Results not reported

EL12	PERC	-60	292	29.00	772251.10	7988980.22	319.37	SED	1990	Inside open pit - Assay Results not reported
EL13	PERC	-60	289	14.00	772253.18	7989028.03	319.37	SED	1990	Au assay results in Appendix 2
EL14	PERC	-60	289	30.00	772255.65	7989028.01	321.86	SED	1990	Au assay results in Appendix 2
EL15	PERC	-60	296	30.00	772247.04	7989019.77	319.37	SED	1990	Au assay results in Appendix 2
EL16	PERC	-60	292	48.00	772142.12	7988843.36	318.37	SED	1992	Au assay results in Appendix 2
EL17	PERC	-60	294	36.00	772137.52	7988845.29	318.37	SED	1992	Au assay results in Appendix 2
EL18	PERC	-60	294	24.00	772132.91	7988847.21	318.37	SED	1992	Au assay results in Appendix 2
EL19	PERC	-60	291	56.00	772129.95	7988828.43	317.37	SED	1992	Au assay results in Appendix 2
EL20	PERC	-60	291	43.00	772123.04	7988831.31	317.37	SED	1992	Au assay results in Appendix 2
EL21	PERC	-60	292	26.00	772117.51	7988833.61	317.37	SED	1992	Au assay results in Appendix 2
EL22	PERC	-60	291	57.00	772118.42	7988813.76	317.37	SED	1992	Au assay results in Appendix 2
EL23	PERC	-60	291	33.00	772108.90	7988815.57	316.37	SED	1992	Au assay results in Appendix 2
EL24	PERC	-50	287	21.00	772101.53	7988818.64	316.37	SED	1992	Au assay results in Appendix 2
EL25	PERC	-50	287	18.00	772090.12	7988799.06	316.37	SED	1992	Au assay results in Appendix 2
EL26	PERC	-50	307	33.00	772101.18	7988794.45	316.37	SED	1992	Au assay results in Appendix 2
EL27	PERC	-50	314	54.00	772112.24	7988789.83	316.37	SED	1992	Au assay results in Appendix 2
EL28	PERC	-50	307	17.00	772078.71	7988779.47	317.37	SED	1992	Au assay results in Appendix 2
EL29	PERC	-50	297	35.00	772088.85	7988775.25	317.37	SED	1992	Au assay results in Appendix 2
EL30	PERC	-50	297	51.00	772099.91	7988770.63	317.37	SED	1992	Au assay results in Appendix 2
EL31	PERC	-50	302	10.00	772238.01	7989004.60	319.87	SED	1992	Inside open pit - Assay Results not reported
EL32	PERC	-50	312	17.00	772242.43	7989002.22	319.37	SED	1992	Inside open pit - Assay Results not reported
EL33	PERC	-50	312	14.00	772232.25	7988997.27	320.37	SED	1992	Inside open pit - Assay Results not reported
EL34	PERC	-50	287	18.00	772236.86	7988995.35	319.87	SED	1992	Inside open pit - Assay Results not reported
EL35	PERC	-60	292	17.00	772188.06	7988878.30	320.37	SED	1992	Inside open pit - Assay Results not reported

EL36	PERC	-60	292	16.00	772227.83	7988973.69	320.37	SED	1992	Inside open pit - Assay Results not reported
EL37	PERC	-60	292	20.00	772233.82	7988971.19	319.87	SED	1992	Inside open pit - Assay Results not reported
EL38	PERC	-60	294	15.00	772220.76	7988959.33	319.37	SED	1992	Inside open pit - Assay Results not reported
EL39	PERC	-60	292	12.00	772215.26	7988938.36	319.37	SED	1992	Inside open pit - Assay Results not reported
EL40	PERC	-60	289	16.00	772220.79	7988936.06	319.37	SED	1992	Inside open pit - Assay Results not reported
EL41	PERC	-60	292	15.00	772188.95	7988901.19	320.37	SED	1992	Inside open pit - Assay Results not reported
EL42	PERC	-60	292	20.00	772149.92	7988856.88	318.37	SED	1992	Au assay results in Appendix 4
EL43	PERC	-60	292	51.00	772160.98	7988852.27	318.37	SED	1992	Au assay results in Appendix 4
EL44	PERC	-60	289	66.00	772146.54	7988820.92	316.95	SED	1992	Au assay results in Appendix 4
EL45	PERC	-60	287	66.00	772134.55	7988807.04	317.37	SED	1992	Au assay results in Appendix 4
EL46	PERC	-60	297	66.00	772121.68	7988782.85	315.97	SED	1992	Au assay results in Appendix 4
EL47	RC	-60	288	98.00	772153.88	7988797.35	317.57	SED	1993	Au assay results in Appendix 4
EL48	RC	-60	291	98.00	772165.21	7988816.22	318.07	SED	1993	Au assay results in Appendix 4
EL49	RC	-60	291	98.00	772181.76	7988840.64	318.20	SED	1993	Au assay results in Appendix 4
EL50	RC	-60	291	98.00	772130.80	7988756.78	315.97	SED	1993	Au assay results in Appendix 4
EL51	RC	-60	288	109.50	772133.22	7988726.24	315.17	SED	1993	Au assay results in Appendix 4
EL52	RC	-60	286	59.00	772219.25	7988879.69	320.87	SED	1993	Au assay results in Appendix 4
EL53	RC	-60	296	53.00	772262.16	7988960.03	319.37	SED	1993	Au assay results in Appendix 4
EL54	RC	-90	-	39.00	772165.64	7988786.93	315.95	SED	1994	Au assay results in Appendix 4
EL55	RC	-90	-	39.00	772187.57	7988773.89	315.55	SED	1994	Au assay results in Appendix 4
EL56	RC	-90	-	48.00	772221.41	7988761.09	314.87	SED	1994	Au assay results in Appendix 4
EL57	RC	-90	-	39.00	772154.43	7988719.78	314.57	SED	1994	Au assay results in Appendix 4
EL58	RC	-90	-	45.00	772186.92	7988709.48	313.67	SED	1994	Au assay results in Appendix 4
EL59	RC	-90	-	24.00	772114.48	7988688.83	316.07	SED	1994	Au assay results in Appendix 4
EL60	RC	-90	-	51.00	772145.67	7988678.00	314.77	SED	1994	Au assay results in Appendix 4
EL61	RC	-90	-	33.00	772081.53	7988692.83	317.47	SED	1994	Au assay results in Appendix 4

EL62	RC	-90	-	42.00	772076.84	7988650.43	317.17	SED	1994	Au assay results in Appendix 4
EL63	RC	-90	-	45.00	772119.73	7988628.77	315.37	SED	1994	Au assay results in Appendix 4
EL64	RC	-90	-	20.00	772051.91	7988606.20	316.37	SED	1994	Au assay results in Appendix 4
EL65	RC	-90	-	45.00	772097.95	7988584.30	315.17	SED	1994	Au assay results in Appendix 4
EL66	RC	-90	-	24.00	772192.85	7988824.92	317.37	SED	1994	Au assay results in Appendix 4
EL67	RC	-90	-	45.00	772226.49	7988804.41	316.67	SED	1994	Au assay results in Appendix 4
EL68	RC	-90	-	24.00	772227.30	7988855.29	317.73	SED	1994	Au assay results in Appendix 4
EL69	RC	-90	-	30.00	772245.33	7988914.47	318.97	SED	1994	Au assay results in Appendix 4
EL70	RC	-90	-	39.00	772275.74	7988888.81	316.78	SED	1994	Au assay results in Appendix 4
EL71	RC	-90	-	30.00	772275.22	7988955.02	318.68	SED	1994	Au assay results in Appendix 4
EL72	RC	-90	-	27.00	772269.92	7988999.41	320.47	SED	1994	Au assay results in Appendix 4
EL73	RC	-60	299	27.00	772292.96	7988989.81	319.07	SED	1994	Au assay results in Appendix 4
EL74	RC	-90	-	36.00	772313.78	7988980.05	317.87	SED	1994	Au assay results in Appendix 4
EL75	RC	-60	309	24.00	772294.52	7989043.60	321.66	SED	1994	Au assay results in Appendix 4
EL76	RC	-70	292	30.00	772325.08	7989030.51	319.87	SED	1994	Au assay results in Appendix 4
EL77	RC	-70	292	45.00	772339.97	7988970.21	318.37	SED	1994	Au assay results in Appendix 4
EL78	RC	-70	292	24.00	772416.81	7989154.54	321.87	SED	1994	Au assay results in Appendix 4
EL79	RC	-70	292	21.00	772453.88	7989191.55	322.37	SED	1994	Au assay results in Appendix 4
EL80	RC	-70	292	27.00	772496.85	7989175.26	321.37	SED	1994	Au assay results in Appendix 4
EL81	RC	-60	292	171.30	772190.16	7988805.49	315.37	RGC	1995	Au assay results in Appendix 4
EL82	RC	-60	292	132.00	772237.96	7988850.38	317.20	RGC	1995	Au assay results in Appendix 4
EL83	RC	-60	292	120.00	772274.68	7988943.34	316.57	RGC	1995	Au assay results in Appendix 4
EL84	RC	-60	292	76.00	772295.51	7989044.02	321.75	RGC	1995	Au assay results in Appendix 4
EL85	RC	-60	292	112.00	772331.53	7989027.82	319.57	RGC	1995	Au assay results in Appendix 4
EL86	RC	-60	292	124.00	772581.98	7989356.13	315.37	RGC	1995	Au assay results in Appendix 4
EL87	RC	-60	292	118.00	772457.49	7989136.88	322.98	RGC	1995	Au assay results in Appendix 4
EL88	RC	-60	292	130.00	772051.31	7988603.53	316.42	RGC	1995	Au assay results in Appendix 4

EL89	RC	-60	292	154.00	772081.07	7988699.51	316.17	RGC	1995	Au assay results in Appendix 4
EL90	RC	-60	292	63.00	772125.65	7988832.38	317.77	RGC	1995	Au assay results in Appendix 4
EL91	RC	-70	292	153.00	772127.16	7988680.30	317.77	RGC	1995	Au assay results in Appendix 4
EL92	RC	-60	292	153.00	772097.95	7988584.30	315.37	RGC	1995	Au assay results in Appendix 4
EL93	RC	-60	292	147.00	772159.05	7988769.78	317.37	RGC	1995	Au assay results in Appendix 4
ELD01	DDH	-70	292	17.60	772194.33	7988907.60	318.37	CGM	1980	Inside open pit - Assay Results not reported
ELD02	DDH	-70	292	30.60	772203.54	7988903.76	318.37	CGM	1980	Inside open pit - Assay Results not reported
ELD03	DDH	-70	292	14.00	772229.05	7988936.40	319.37	CGM	1980	Inside open pit - Assay Results not reported
ELD04	DDH	-70	292	24.00	772236.89	7988965.59	319.37	CGM	1980	Inside open pit - Assay Results not reported
ELD05	DDH	-60	292	45.50	772189.95	7988885.42	320.37	CGM	1980	Inside open pit - Assay Results not reported
ELD08	DDH	-60	292	37.00	772210.95	7988915.82	320.37	CGM	1980	Inside open pit - Assay Results not reported
ELD07	DDH	-60	292	30.00	772219.49	7988930.87	319.37	CGM	1980	Inside open pit - Assay Results not reported
ELD08	DDH	-60	292	30.17	772236.57	7988966.72	321.31	CGM	1980	Inside open pit - Assay Results not reported
ELD09	DDH	-60	292	36.17	772178.11	7988870.01	319.37	CGM	1980	Inside open pit - Assay Results not reported
ELD10	PERC	-60	292	60.41	772163.36	7988850.20	320.37	CGM	1980	Au assay results in Appendix 4

Appendix 4 Historic Drilling Results

Historical Intercepts have been calculated using a 0.50 g/t COG grade with up to 3 meters of internal dilution, no top cut has been applied. Intercepts for holes which were drilled within the Electric Light pit limits have not been included as the area has been mined out and the results are not germane to this document. All the data below is taken from the historical databases of previous explorers, and all the information can be accessed via the Queensland Department of Resources open file data in GeoRes Globe.

Hole No.	From	To	Interval	Au g/t
EL10	37	42	5	4.69
EL1000	30	51	21	4.77
EL1001	32	42	10	5.99
EL13	7	10	3	1.48
EL14	16	20	4	1.67
EL15	15	21	6	1.54
EL16	21	24	3	14.39
and	28	48	20	5.85
EL17	20	32	12	12.27
EL18	15	23	8	5.72
EL19	28	55	27	4.72
EL20	20	41	21	8.40
EL21	13	19	6	5.82
EL22	30	57	27	2.40
EL23	16	31	15	6.29
EL24	NSR			
EL25	NSR			
EL26	22	33	11	13.16
EL27	42	44	2	1.97
EL28	NSR			
EL29	15	30	15	5.78
EL30	33	35	2	1.90
EL42	14	19	5	7.98
EL43	25	50	25	3.48
EL44	18	65	47	0.88
EL45	36	66	30	1.47
EL46	35	48	13	1.05
and	51	63	12	1.23
EL47	78	93	15	3.61
EL48	75	90	15	15.48
EL49	72	74	2	4.23
EL50	74	77	3	1.04
and	85	88	3	1.29

EL51	102	108	6	0.83
EL52	48	53	5	0.85
EL53 to EL74 No assays greater than 0.50 g/t Au				
EL75	21	24	3	0.86
EL76	NSR			
EL77	NSR			
EL78	9	11	2	2.75
EL78 to EL81 No assays greater than 0.50 g/t Au				
EL82	82	84	2	1.26
and	90	92	2	0.73
EL83 to EL88 No assays greater than 0.50 g/t Au				
EL89	60	72	12	3.72
EL90	16	22	6	7.80
EL91	122	134	12	2.20
and	140	150	10	2.24
EL92	NSR			
EL93	102	120	18	2.08

Hole EL48 has been highlighted as the average is skewed by a 1m interval that assayed at 195 g/t Au

Appendix 5: Electric Light JORC 2012 TABLE 1

Section 1 Sampling Techniques and Data

Criteria	JORC Code explanation	Commentary
Sampling techniques	<ul style="list-style-type: none"> Nature and quality of sampling (e.g. cut channels, random chips, or specific specialised industry standard measurement tools appropriate to the minerals under investigation, such as down hole gamma sondes, or handheld XRF instruments, etc). These examples should not be taken as limiting the broad meaning of sampling. Include reference to measures taken to ensure sample representivity and the appropriate calibration of any measurement tools or systems used. In cases where 'industry standard' work has been done this would be relatively simple (e.g. 'reverse 	<ul style="list-style-type: none"> Soil sampling, surface rock chips and surface and down hole geophysical surveys were all undertaken at various stages. These were not used for the resource estimate and hence are not considered The data has been superseded by drilling data and is therefore not included in this announcement Sampling included surface costeans and trenches that were used for interpretation but not for used for estimation. Being at surface many of these are now mined out and have minimal impact. RGC in 1995 completed 6 trenches dug to rock and were mapped and sampled on 2 m intervals, the costeans were excavated where DRAU extracted material from the pit therefore this data has been excluded <p>With respect to SVG's 2025 drilling programme</p> <ul style="list-style-type: none"> SVG completed 6 Reverse Circulation (RC) holes for a total of 408m The RC holes were sampled at individual 1m lengths using a cone splitter attached to the cyclone No composite samples were submitted Individual RC samples were collected in numbered calico bags, and then placed in large poly-weave sacks for dispatch to the laboratory in Townsville Each sample weighed between 2kg to 3 kg Samples were submitted to Intertek Laboratories in Townsville

Criteria	JORC Code explanation	Commentary
	<p><i>circulation drilling was used to obtain 1 m samples from which 3 kg was pulverised to produce a 30 g charge for fire assay).</i></p>	<ul style="list-style-type: none"> No drilled interval was not sampled Backup / duplicate samples for each interval were also collected and retained at the company's Agate Creek site
Drilling techniques	<ul style="list-style-type: none"> <i>Drill type (e.g. core, reverse circulation, open-hole hammer, rotary air blast, auger, Bangka, sonic, etc) and details (e.g. core diameter, triple or standard tube, depth of diamond tails, face-sampling bit or other type, whether core is oriented and if so, by what method, etc).</i> 	<p>With respect to SVG's 2025 drilling programme:</p> <ul style="list-style-type: none"> The drilling methodology was Reverse Circulation drilling with the drilling completed by GeoDrill using a 685 Shramn The drilling was completed using a 5.5 inch face sampling hammer PVC casing was used for each hole to protect the collar and each hole was capped The drilling methodology and equipment were industry best practice <p>With respect to previous explorers</p> <ul style="list-style-type: none"> Castlegold Pty Ltd (1985) percussion drilling for 10 holes Sedimentary Holdings Ltd (1990-1994) completed 80 percussion holes From 1992 drilling used a truck mounted Warman 250 RC drill rig From 1995 drilling by an Ausdrill UDR650 rig with 350psi and 500 cfm compressor with a compressor booster used for some deeper holes. Renison Goldfield Group (1995) completed one diamond drill hole and 12 RC holes using a similar URD650 rig. A compressor booster was added to increase drilling rate and recovery.
Drill sample recovery	<ul style="list-style-type: none"> <i>Method of recording and assessing core and chip sample recoveries and results assessed.</i> 	<p>With respect to SVG's 2025 drilling programme</p> <ul style="list-style-type: none"> For RC drilling, recovery can be monitored by observing the consistency of the amount of drill chips produced for each 1m sample. Apart from the first 1 or 2 samples at the top of each hole, the same amount of material was produced per 1 meter sample, with the samples consistently weighing between 2 to 3 kg. Samples were drilled dry and no wet samples were obtained <p>With respect to previous explorers</p> <ul style="list-style-type: none"> The strong silicification of the rhyolitic host rocks has resulted in more competent rock and better drilling conditions at Electric Light. No record of the drilling recoveries is available or commented on in historic reports other than initial drilling included some diamond core tails in the 1980's. Drill logs indicate predominantly 100% recovery with just a few exceptions. Electric Light percussion drilling comprises a significant portion of the drilling. It is unclear how much of is open hole or other methods that may be subject to down hole contamination. Some smearing of grades was recognised in the 1980s.
	<ul style="list-style-type: none"> <i>Measures taken to maximise sample</i> 	<p>With respect to SVG's 2025 drilling programme</p>

Criteria	JORC Code explanation	Commentary
	<p><i>recovery and ensure representative nature of the samples.</i></p>	<ul style="list-style-type: none"> The samples were collected using a face sampling hammer, the samples after going through the cyclone went through a cone splitter, with 12.5% of the sample collected in a numbered calcio bag, the samples collected are representative of the material drilled <p>With respect to previous explorers</p> <ul style="list-style-type: none"> Open hole drilling with some potential for smearing was initially used but from the early 1990s' drilling progressed to RC drilling as drilling methods improved across the industry. Diamond drilling was used to target deeper sulphide mineralisation as used triple tube and short runs to try and maximise recovery.
	<ul style="list-style-type: none"> <i>Whether a relationship exists between sample recovery and grade and whether sample bias may have occurred</i> 	<p>With respect to SVG's 2025 drilling programme</p> <ul style="list-style-type: none"> There is no sample bias and there is no relationship between observed recovery and assay grade <p>With respect to previous explorers</p> <ul style="list-style-type: none"> No obvious previous workers have indicated a relationship between recovery and grade other than that the mineralisation zone is softer and more challenging to drill. No digital recovery data is currently recovered to assess any potential relationship.
Logging	<ul style="list-style-type: none"> <i>Whether core and chip samples have been geologically and geotechnically logged to a level of detail to support appropriate Mineral Resource estimation, mining studies and metallurgical studies. Whether logging is qualitative or quantitative in nature. Core (or costean, channel, etc) photography. The total length and percentage of the relevant intersections logged.</i> 	<p>With respect to SVG's 2025 drilling programme</p> <ul style="list-style-type: none"> Geological logs were completed for all drill holes by an experienced geologist at a level to support appropriate mineral resource estimation The lithology, weathering, oxidation colour, grainsize, texture, alteration, vein material were recorded on a paper log sheet which was then transferred to a digital log sheet for inclusion in the company's database Logging of mineralisation and veining in the RC chips was quantitative Representative chips from each drill hole interval were placed in numbered chip trays and the chip trays were photographed Each 1m interval was logged <p>With respect to previous explorers</p> <ul style="list-style-type: none"> Logging for geology and alteration is available for most drill holes. Recovery of diamond core was noted though not preserved in the digital database
Sub-sampling techniques and sample preparation	<ul style="list-style-type: none"> <i>If core, whether cut or sawn and whether quarter, half or all core taken.</i> 	<p>With respect to SVG's 2025 drilling programme</p> <ul style="list-style-type: none"> No core was drilled <p>With respect to previous explorers</p> <ul style="list-style-type: none"> Castlegold Pty Ltd completed percussion precollars and diamond tails. Core logging indicates most intervals had 100% recovery Sedimentary Holding only completed one diamond drill hole. The drill rig, core and sampling is not documented
	<ul style="list-style-type: none"> <i>If non-core, whether riffled, tube sampled, rotary split, etc and</i> 	<p>With respect to SVG's 2025 drilling programme</p>

Criteria	JORC Code explanation	Commentary
	<p><i>whether sampled wet or dry.</i></p>	<ul style="list-style-type: none"> The samples were drilled dry, except for hole EL25RC1014 which was stopped at 96m due to high water flows and the inability to obtain a dry sample The samples were collected from a cone- splitter which was attached to the cyclone on the drill rig 12.5% of the sample split was retained for assay, with the remaining 87.5% of the sample left in piles on the drill site to be rehabilitated at a later date <p>With respect to previous explorers</p> <ul style="list-style-type: none"> Percussion samples were generally on 2 m intervals. Splitting of percussion samples is not described. Early very drilling use open hole and some tailing or smear of grades was evident. This was rectified later in the program with higher pressure RC drilling. DRAU (2009 –2012) RC subsampling at the drill rig with a riffle splitter to 5 kg subsamples
	<ul style="list-style-type: none"> <i>For all sample types, the nature, quality and appropriateness of the sample preparation technique.</i> 	<p>With respect to SVG’s 2025 drilling programme</p> <ul style="list-style-type: none"> The SVG drill samples were a 12.5% split from a cone splitter attached to the cyclone, samples typically weighed between 2 to 3 kg and the sample that was sent to an accredited laboratory for analysis. The samples were despatched to Intertek Laboratories in Townsville, North Queensland. The samples were dried, crushed and pulverised as per industry standard practise. The sample preparation technique is appropriate for the style of mineralisation being analysed The samples were pulverised to -75 microns and analysed for gold only by fire assay (FA50/OE) All the samples were assayed for multi elements using the 4A/MS methodology <p>With respect to previous explorers</p> <ul style="list-style-type: none"> Sample preparation was by commercial laboratories that changed which each operating company. Though not described sample preparation is assumed to have used industry standard practices of the day.
	<ul style="list-style-type: none"> <i>Quality control procedures adopted for all sub-sampling stages to maximise representivity of samples.</i> <i>Measures taken to ensure that the sampling is representative of the in situ material collected, including for instance results for field duplicate/second-half sampling.</i> 	<p>With respect to SVG’s 2025 drilling programme</p> <ul style="list-style-type: none"> One to three duplicate sample per hole were submitted to Intertek for analysis along with the original sample A Blank and two standards were also submitted with each sample batch Intertek also used their own standards and ran duplicate samples on SVG’s submitted samples duplicates The duplicate standards returned results that fall within industry standards for the type and style of mineralisation reported <p>With respect to previous explorers</p> <ul style="list-style-type: none"> Riffle split of RC samples should have produced acceptable presentation of the splits. There is no record if processes were adopted for diamond core splitting to avoid bias. Given the broken ground structural bias between core halves is unlikely. There are no records of spear percussion sampling. Subsampling sizes are within industry practise and considered acceptable

Criteria	JORC Code explanation	Commentary
	<ul style="list-style-type: none"> Whether sample sizes are appropriate to the grain size of the material being sampled. 	<p>With respect to SVG's 2025 drilling programme</p> <ul style="list-style-type: none"> The sample size is a 12.5% split of the entire samples and weighed between 2 to 3kgs, this is considered appropriate by the CP The sample size is appropriate considering the grain size of the material, as well as the style of mineralisation being analysed.
<p>Quality of assay data and laboratory tests</p>	<ul style="list-style-type: none"> The nature, quality and appropriateness of the assaying and laboratory procedures used and whether the technique is considered partial or total. 	<p>With respect to SVG's 2025 drilling programme</p> <ul style="list-style-type: none"> The method employed is industry standard and considered appropriate for the style of deposit and elements being assayed Sample preparation and assaying was Intertek in Townsville Samples were assayed for gold using the Au FA50/OE methodology and for multi-element analysis using the MS/4A method <p>With respect to previous explorers</p> <ul style="list-style-type: none"> The method employed is industry standard and considered appropriate for the style of deposit and elements being assayed. Castlegold drilling used ALS laboratories in Mareeba with IC580 analysis for Cu, Pb, AG and As and PM209 for Au Sedimentary Holdings sampling in 1990 to 1994 was assayed at Tableland Analytical of Herberton using 50 g fire assays. High sulphide samples were pre-roasted. Analabs in Townsville was used for check analyses using aqua regia and by Neutron Activation by Becquerel in Sydney, both labs indicated some high results though the differences were erratic. Sedimentary Holdings sampling after 1994 was assayed Analabs in Townsville by fire assay methods GG309 and GG313 and ICP used for AG, As, Cu, Pb, Zn and Fe. RGC 2m samples were assayed at Analabs in Townville using 50 g fire assay.
	<ul style="list-style-type: none"> For geophysical tools, spectrometers, handheld XRF instruments, etc, the parameters used in determining the analysis including instrument make and model, reading times, calibrations factors applied and their derivation, etc. 	<ul style="list-style-type: none"> No geophysical tools were used.
	<ul style="list-style-type: none"> Nature of quality control procedures adopted (e.g. standards, blanks, duplicates, external laboratory checks) and whether acceptable levels of accuracy (i.e. lack of bias) and precision have been established 	<p>With respect to SVG's 2025 drilling programme</p> <ul style="list-style-type: none"> Two standards and a blank was submitted at the start of the drilling and duplicate samples were selected at random intervals from each hole. The blank, standards and duplicate came back with acceptable limits. The laboratory also took duplicates and submitted standards. All QA/QC check assays came back within acceptable limits. <p>With respect to previous explorers</p>

Criteria	JORC Code explanation	Commentary
		<ul style="list-style-type: none"> • Reference to available QAQC is limited and a few concerns were previously raised though further work is required to collate the historic QAQC references and results. • At Red Dam GML repeated analyses from SGS at ALS randomly at about 1 in 20 samples with 24 samples. In addition some check sample duplicates were taken by spear sampling the RC field residue. • At Electric Light early assaying at Herberton were higher than two other check laboratories. This potential bias affects holes EL1 to EL45. The nature of the bias needs further assessment and digitisation of the past results. Exclusion of the early assays results in a 10% lower grade. This is similar to mine to model reconciliations.
Verification of sampling and assaying	<ul style="list-style-type: none"> • <i>The verification of significant intersections by either independent or alternative company personnel.</i> 	<p>With respect to SVG's 2025 drilling programme</p> <ul style="list-style-type: none"> • All assay data received including significant intercepts are reviewed by at least 2 appropriately qualified persons for validation purposes. All reported significant intercepts are verified by at least 2 appropriately qualified persons <p>With respect to previous explorers</p> <ul style="list-style-type: none"> • All historical intercepts were also reviewed by 2 appropriated qualified persons
	<ul style="list-style-type: none"> • <i>The use of twinned holes.</i> 	<p>With respect to SVG's 2025 drilling programme</p> <ul style="list-style-type: none"> • No holes were twinned in SVG's 2025 drilling programme <p>With respect to previous explorers</p> <ul style="list-style-type: none"> • At Electric Light RGC undertook some drilling within and near to previous drilling as a validation and extension program. One drill hole that was amongst some early percussion holes had thinner lower grade results indicating both smearing and possible assay issues. • Other RGC drilling targeted extensions with mixed results that indicated a southerly dipping shoot. The reduced potential and complicated verification resulted in RGC not continuing to earn into the project. • At Electric Light two diamond holed drilling by DRAU (2011) twining previous percussion holes. Some smearing down holes was suggested though the widths and tenor of mineralisation were considered reasonable.
	<ul style="list-style-type: none"> • <i>Documentation of primary data, data entry procedures, data verification, data storage (physical and electronic) protocols.</i> 	<ul style="list-style-type: none"> • SVG has collated and created a digital database of all exploration completed at the project which contains all of the historical drill hole data
	<ul style="list-style-type: none"> • <i>Discuss any adjustment to assay data.</i> 	<ul style="list-style-type: none"> • No adjustment of assay data was considered necessary.
Location of data points	<ul style="list-style-type: none"> • <i>Accuracy and quality of surveys used to locate drill holes (collar and down-hole surveys), trenches, mine workings and other</i> 	<p>With respect to SVG's 2025 drilling programme</p> <ul style="list-style-type: none"> • All drill hole locations were surveyed using a hand held GPS with a +/- 5m accuracy. • The coordinate system used is Geocentric Datum of Australia (GDA202) Map Grid of Australia (MGA) zone 54

Criteria	JORC Code explanation	Commentary
	<p><i>locations used in Mineral Resource estimation.</i></p>	<ul style="list-style-type: none"> A table of drill hole parameters is included as Table 1 in the document. <p>With respect to previous explorers</p> <ul style="list-style-type: none"> GML drilling and surface topography (1:1000 airborne mapping) were surveyed by Ausnorth Consultants in 2006 when an MGA network was established along with resurvey of some historic drilling. Subsequent drilling by GML was surveyed by differential GPS. Initial layout of drilling is not documented. 24 previous collars were able to be resurveyed by Ausnorth Consultants to assist transformation of the original local grid to MGA coordinates. DRAU drilling was surveyed by Ausnorth Consultants Surface topography for all deposits with mining were surveyed by Ausnorth Consultants pre and post mining. There is no description of down hole surveys for all drilling phases. Similarly at Electric Light most drilling is at 60° with similar comments on setup and down hole surveys. The drill hole parameters for the historic holes are included in Appendix 3
	<ul style="list-style-type: none"> <i>Specification of the grid system used.</i> 	<p>With respect to SVG’s 2025 drilling programme</p> <ul style="list-style-type: none"> All data has been converted to MGA 94 (Zone 54). Elevation values are in AHD RL All the historic data has been converted to MGA94 (Zone 54) and elevations are in AHD RL.
	<ul style="list-style-type: none"> <i>Quality and adequacy of topographic control.</i> 	<p>With respect to SVG’s 2025 drilling programme</p> <ul style="list-style-type: none"> The Quality of the topographic control data is reliant on public domain topographic data. GPS readings with a +-5m accuracy was used to survey in the drill holes <p>With respect to previous explorers</p> <ul style="list-style-type: none"> Elevation control was based on Ausnorth surface surveys post mining. These were extended to outlying areas using SRTM (shutter radar 30 m spaced elevation data).
Data spacing and distribution	<ul style="list-style-type: none"> <i>Data spacing for reporting of Exploration Results.</i> 	<p>With respect to SVG’s 2025 drilling programme</p> <ul style="list-style-type: none"> Due to the exploratory nature of the drilling, spacing varied between 40m to 120m between holes (see drill hole map included as Figure 2 in the document)
	<ul style="list-style-type: none"> <i>Whether the data spacing and distribution is sufficient to establish the degree of geological and grade continuity appropriate for the Mineral Resource and Ore Reserve estimation procedure(s) and classifications applied.</i> 	<ul style="list-style-type: none"> An Inferred resource has been reported for Electric Light, the details of which are included in the report. These results and additional drilling in November maybe utilised to update this resource in the 2026 There are no reported Mineral Resources or Reserves – these sample results may in the future be used for Mineral resource and Ore reserve estimation after additional drilling programs have been undertaken

Criteria	JORC Code explanation	Commentary
	<ul style="list-style-type: none"> Whether sample compositing has been applied. 	<ul style="list-style-type: none"> No sample compositing has been carried out.
Orientation of data in relation to geological structure	<ul style="list-style-type: none"> Whether the orientation of sampling achieves unbiased sampling of possible structures and the extent to which this is known, considering the deposit type. 	<p>With respect to SVG's 2025 drilling programme</p> <ul style="list-style-type: none"> Where possible the drill holes were orientated to intersect the mineralised target perpendicular to strike The holes were designed to intersect the mineralisation perpendicular to strike and at 90 degreed to the dip to obtain true intercept thicknesses <p>With respect to previous explorers</p> <ul style="list-style-type: none"> At Electric Light most drilling is at 60° drilled perpendicular to the structure which is steeply dipping
	<ul style="list-style-type: none"> If the relationship between the drilling orientation and the orientation of key mineralised structures is considered to have introduced a sampling bias, this should be assessed and reported if material. 	<ul style="list-style-type: none"> Drilling orientations are considered appropriate to the mineralisation type with no bias observed as a result of the drill orientation. At this stage no sampling bias is considered to have been introduced in the sampling undertaken to date
Sample security	<ul style="list-style-type: none"> The measures taken to ensure sample security. 	<ul style="list-style-type: none"> The chain of custody is managed by the project geologist who generally dispatches the sample bags directly from site to the lab by an authorised company representative No third party was involved with the handling of the samples, with a company representative delivering the samples to the Townsville Laboratory
Audits or reviews	<ul style="list-style-type: none"> The results of any audits or reviews of sampling techniques and data. 	<ul style="list-style-type: none"> SVG's Exploration manager visited the project site at the start of the drilling programme and reviewed sampling methodologies and data capture with the project geologists overseeing the drilling programme.

Section 2: Reporting Exploration Results

Criteria	JORC Code explanation	Commentary
Mineral tenement and land tenure status	<ul style="list-style-type: none"> Type, reference name/number, location and ownership including agreements or material issues with third parties such as joint ventures, partnerships, overriding royalties, native title interests, historical sites, wilderness or national park and environmental settings. 	<ul style="list-style-type: none"> The Electric Light project lies within ML 3548 and EPM 8545 – Electric Light. This EPM and ML are part of the 17 EPMs and 18 MLs which comprise Savannah Goldfield's Etheridge Project The EPM and ML held by Kempton Minerals Pty Ltd, a 100% owned subsidiary of Savannah Goldfields Ltd The tenements are in good standing For all the tenements which comprise the Etheridge Project refer to the tenement table in the company's Annual Report dated 20 December 2024 Savannah has a current Native Title Compensation Agreement and a CHMA with the determined Native Title group for all activities within EPM 8545 and current Conduct and Compensation Agreements are currently being negotiated with the underlying land holders.

Criteria	JORC Code explanation	Commentary
	<ul style="list-style-type: none"> <i>The security of the tenure held at the time of reporting along with any known impediments to obtaining a licence to operate in the area.</i> 	<ul style="list-style-type: none"> The tenements are 100% owned by a subsidiary of SVG, and there are no impediments to operating in this area
<p>Exploration done by other parties</p>	<ul style="list-style-type: none"> <i>Acknowledgment and appraisal of exploration by other parties</i> 	<ul style="list-style-type: none"> Several companies have explored on EPM8545 in the past, including CastleGold Pty Ltd, Sedimentary Holdings Ltd in JV with Renison Goldfields Consolidated (RGC) and later in JV with Gold Fields Ltd, Plentex Pty Ltd, and Deutsche Rohstoff Australia Pty Ltd. Exploration surrounding EPM8545 has been conducted by Newcrest Mining Ltd, Keela Wee Exploration Ltd, Sedimentary Holdings Ltd and Kidston Gold Mines Pty Ltd. Early work in the area by companies including Pechiney Exploration, Minatome, Drawmac Holdings, Eastment Minerals, CRAE, Teton Exploration Drilling was focussed on uranium mineralisation associated with the Newcastle Range Volcanics. Work resulted in definition of two small areas of uranium mineralisation at Twogee and Trident Prospects (which lie east of EPM8545) both of which were considered too low in grade and tonnage to progress to viable mining options. Modern exploration commenced at Electric Light in 1985 when CastleGold acquired the area under ATP3908. CastleGold held a significant number of permits in the area and work focused quickly on Electric Light and included several rounds of drilling between 1985-1986 (CR15560, CR15563) which further defined mineralisation. CastleGold also prospected numerous areas for alluvial gold including Sefton and Daniel Creeks. The Delaney Fault became a focus for exploration of Electric Light analogues and this led to the discovery of the Delaney prospect 1km north. Keela Wee did several rounds of drilling at Delaney Prospect which returned several significant results but overall considered the prospect uneconomic in the existing economic climate at the time. During the 1990's work was focussed on gold mineralisation along the Delaney Fault. Companies included Sedimentary Holdings, CastleGold and Keela Wee but work throughout the area was dominated by Union Mining and Kidston Goldmines. Most work completed in and around EPM8545 was focussed on Electric Light where an indicated resource of 994Kt at 2.3g/t Au for 74Koz, at a cut-off grade of 0.5g/t Au with a top cut of 39g/t Au was defined in 1996. During the 2000's Electric Light and the Delaney Fault continued to be the focus of further gold exploration by companies including Mega, GML, Plentex, Union Mining, KGM and DRAU. Work in and around EPM8545 continued to be focussed on Electric Light and the Delaney Fault with only minor stream, rock and soil samples completed outside ML3548. Electric Light was mined by DRAU in 2010-2011 and work since this time has focussed

Criteria	JORC Code explanation	Commentary
		<p>on the extensions along strike and down dip at Electric Light.</p>
Geology	<ul style="list-style-type: none"> • <i>Deposit type, geological setting and style of mineralisation.</i> 	<ul style="list-style-type: none"> • The type of mineralisation observed at Electric Light, is a brecciated rhyolite within the Delany fault zone. The Delany fault is a north south trending fault which at Electric Light forms the boundary of a granite to the east and metasediments to the west. The mineralised rhyolite has been intruded in the faults zone. Propylitic alteration and sericite alteration are associated with the rhyolite intrusive. The mineralised rhyolite comprises sulphide mineralisation in the form of galena, sphalerite, arsenopyrite and associated gold and silver mineralisation. • The mineralised zone one the west and a strongly altered granite to the east
Drill hole Information	<ul style="list-style-type: none"> • <i>A summary of all information material to the understanding of the exploration results including a tabulation of the following information for all Material drill holes:</i> <ul style="list-style-type: none"> ○ <i>easting and northing of the drill hole collar</i> ○ <i>elevation or RL (Reduced Level – elevation above sea level in metres) of the drill hole collar</i> ○ <i>dip and azimuth of the hole</i> ○ <i>down hole length and interception depth</i> ○ <i>hole length.</i> 	<ul style="list-style-type: none"> • All the drill hole information is listed in the GDA Z54 format • The data is included in the document in Table 2 and Appendix 3
	<ul style="list-style-type: none"> • <i>If the exclusion of this information is justified on the basis that the information is not Material and this exclusion does not detract from the understanding of the report, the Competent Person should clearly explain why this is the case.</i> 	
Data aggregation methods	<ul style="list-style-type: none"> • <i>In reporting Exploration Results, weighting averaging techniques, maximum and/or minimum grade truncations (e.g. cutting of high grades) and cut-off grades are usually Material and should be stated.</i> • <i>Where aggregate intercepts incorporate short lengths of high grade results and longer lengths of low grade results, the procedure used for such aggregation should</i> 	<ul style="list-style-type: none"> • No capping of high grades was performed. No aggregation of data was performed. • No metal equivalents are reported • The intercepts reported were calculated using a 0.5 g/t Au COG with a maximum of 1m of internal dilution

Criteria	JORC Code explanation	Commentary
	<p><i>be stated and some typical examples of such aggregations should be shown in detail.</i></p> <ul style="list-style-type: none"> <i>The assumptions used for any reporting of metal equivalent values should be clearly stated.</i> 	
Relationship between mineralisation on widths and intercept lengths	<ul style="list-style-type: none"> <i>These relationships are particularly important in the reporting of Exploration Results.</i> <i>If the geometry of the mineralisation with respect to the drill hole angle is known, its nature should be reported.</i> 	<ul style="list-style-type: none"> The apparent thickness of each intercept has been reported The holes drilled were at -60 degrees, the mineralised zone was mapped as predominantly dipping at -60 and the holes would have intersected the mineralised zone perpendicular to strike Each hole was sited on the hanging wall side of the mineralised shear
	<ul style="list-style-type: none"> <i>If it is not known and only the down hole lengths are reported, there should be a clear statement to this effect (e.g. 'down hole length, true width not known').</i> 	<ul style="list-style-type: none"> Apparent thickness and actual thicknesses have been reported
Diagrams	<ul style="list-style-type: none"> <i>Appropriate maps and sections (with scales) and tabulations of intercepts should be included for any significant discovery being reported. These should include, but not be limited to a plan view of drill hole collar locations and appropriate sectional views.</i> 	<ul style="list-style-type: none"> A plan of the drill hole locations and a table listing the coordinates of the drill holes, their depths, dip and azimuth is included in the document, (Figure 2 Table 1 and Appendix 3), Idealised sections of the three of the holes drilled by SVG are included as Figures 3 and 4.
Balanced reporting	<ul style="list-style-type: none"> <i>Where comprehensive reporting of all Exploration Results is not practicable, representative reporting of both low and high grades and/or widths should be practiced to avoid misleading reporting of Exploration Results.</i> 	<ul style="list-style-type: none"> Balance reporting of Exploration Results has been presented in this document
Other substantive exploration data	<ul style="list-style-type: none"> <i>Other exploration data, if meaningful and material, should be reported including (but not limited to): geological observations; geophysical survey results; geochemical survey results; bulk samples – size and method of treatment; metallurgical test results; bulk density, groundwater, geotechnical and rock characteristics; potential deleterious or contaminating substances.</i> 	<ul style="list-style-type: none"> The project includes drill hole data collected by previous companies including surface geochemical data and drill hole data. Most of this data has been captured by SVG in their GIS database There is no additional exploration data that is considered to be material to this report
Further work	<ul style="list-style-type: none"> <i>The nature and scale of planned further work (e.g. tests for lateral extensions or depth extensions or large-scale step-out drilling).</i> 	<ul style="list-style-type: none"> Planned further work will include possible infill drilling adjacent to high grade intercepts Extension drilling along strike of the defined mineralised zone Drilling of two diamond holes to obtain samples for metallurgy, this work is planned for November 2025

Criteria	JORC Code explanation	Commentary
	<ul style="list-style-type: none">• <i>Diagrams clearly highlighting the areas of possible extensions, including the main geological interpretations and future drilling areas, provided this information is not commercially sensitive.</i>	<ul style="list-style-type: none">• The planned drill hole locations have been presented on figure X , any additional information relevant to the drilling will be announced to the market when drilling recommences