

ASX Announcement 27 October 2025

Multiple New, Untested Gold Targets Defined at Leonora North Project

Highlights

- Five main gold anomalies, including 3 significant new targets (S3, S4, S5) identified from extensive 902 soils samples survey at Leonora North Gold Project.
- New, high-priority S4 anomaly defined, measuring 1.2km long by ~0.5km wide.
- Geochemical analysis (probability plot) indicates S4 is stronger in grade than the anomaly over the existing Mt Stirling gold deposit.
- S4 is associated with favourable geology, including outcropping gabbro, basalt, and south-west oriented quartz veining.
- Two further new anomalies, S3 (1.1km) and S5 (0.5km), also identified; all three new anomalies have never been drill-tested.
- S1 (2.5km) and S2 (1.5km) anomalies confirm strong potential to extend known mineralisation at the Mt Stirling, Hydra, and Tyrannus prospects.
- Systematic follow-up including infill soils, rock chipping, and aircore drilling is now being planned.

GoldArc Resources Limited (ASX:GA8) ('GoldArc' or 'the Company') is pleased to report highly encouraging results from a 902-sample soil survey at its Leonora North Gold project. The program has successfully identified five main gold anomalies, including three significant new targets (S3, S4, and S5) that have never been drill-tested.

GoldArc Resources Managing Director, Paul Stephen commented: "These results are outstanding and a testament to our systematic exploration approach. To define three brand-new, undrilled anomalies is a great outcome, but the quality of the S4 target is exceptional.

Geochemical data suggests S4 has the potential to be a larger and higher-grade system than the one we've already defined at Mt Stirling. This fully validates our belief in the untapped discovery potential at the Leonora North, and we have now generated a pipeline of high-priority targets for immediate follow-up and drilling."

Soil Survey

During the year 2025, 902 soil samples (including duplicates, blanks and standards) were collected in three phases in the northern part of the Leonora North Project. Multiple gold anomalies were identified. Two anomalies S1 and S2 are clearly associated with gold deposit at Mt Stirling and mineralisation at Hydra and Tyrannus prospects and they indicate that there is additional gold potential to increase the resources along the soil anomalies that have not been drill-tested.

ASX:GA8

GoldArc Resources

goldarcres.com.au

104 Colin Street
West Perth WA 6005

+61 8 9420 8208



ASX:GA8

GoldArc Resources

goldarcres.com.au

104 Colin Street
West Perth WA 6005

+618 9420 8208

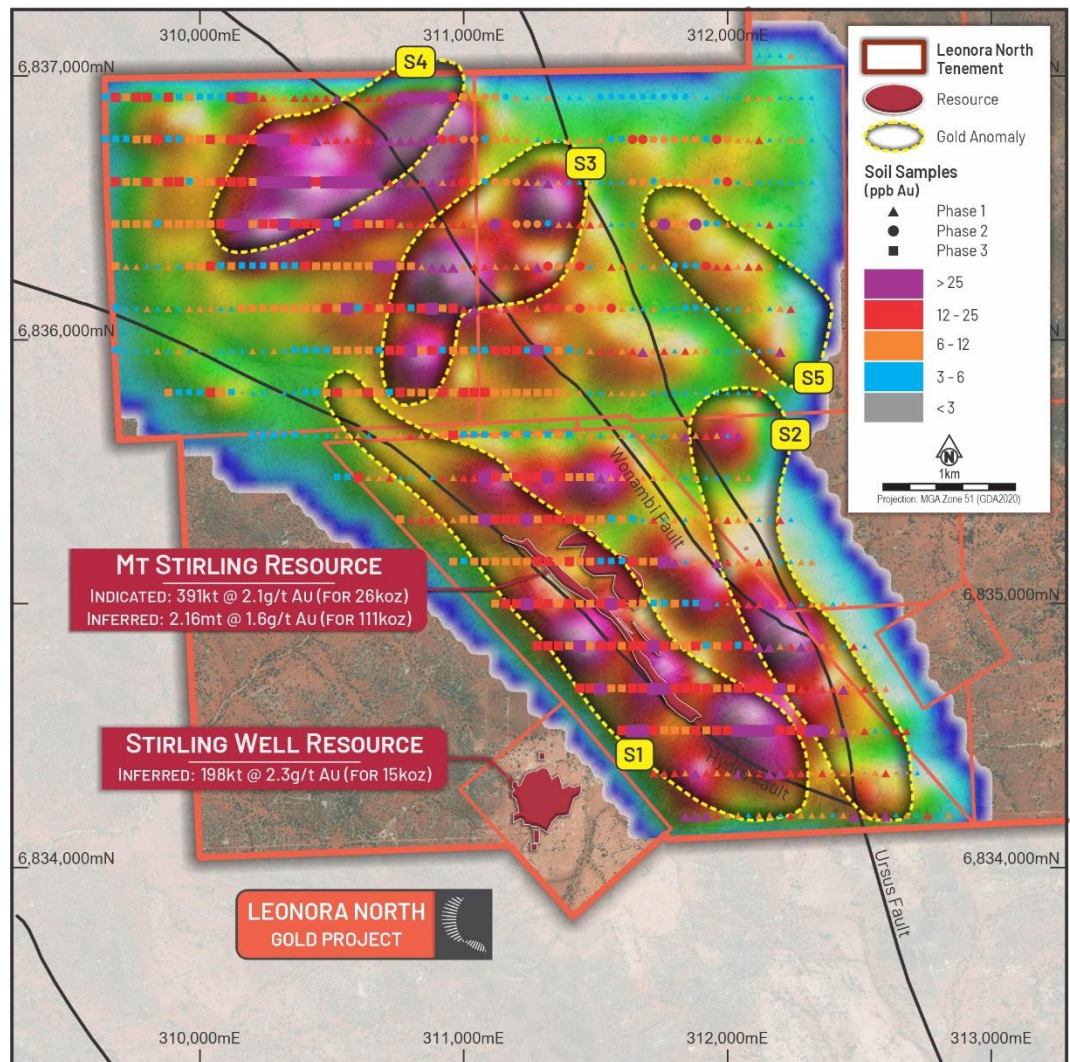


Figure 1 – Soil Survey at Leonora North Project

The newly defined S4 anomaly is considered the highest priority target from the program. It is a large, cohesive anomaly measuring 1.2km long and 0.5km wide.

Significantly, the anomaly coincides with favourable geological indicators, including outcropping gabbro and basalt, and south-west oriented quartz veining, which is a promising sign for mineralisation. Interestingly, both S3 and S4 are intersected in the middle by Wonambi Fault.

In addition to S4, the survey identified two other new, untested targets (Figure 1):

- **S3 Anomaly:** a 1.1km long anomaly with a southwest orientation.
- **S5 Anomaly:** A 0.5km long anomaly with a northwest orientation.

None of the S3, S4 or S5 anomalies have ever been drill-tested, representing compelling 'walk-up' targets for a new gold discovery.

The survey also reinforced the potential to grow the Company's existing resources at Leonora North.

- S1 Anomaly:** This 2.5km long anomaly is associated with the existing Mt Stirling gold deposit and the Hydra prospect along the Hydra Fault. It highlights clear potential mineralisation between these two prospects.
- S2 Anomaly:** This 1.5km long anomaly coincides with the Tyrannus prospect along the Wanambi and Ursus Faults, indicating potential to expand mineralisation in this area.

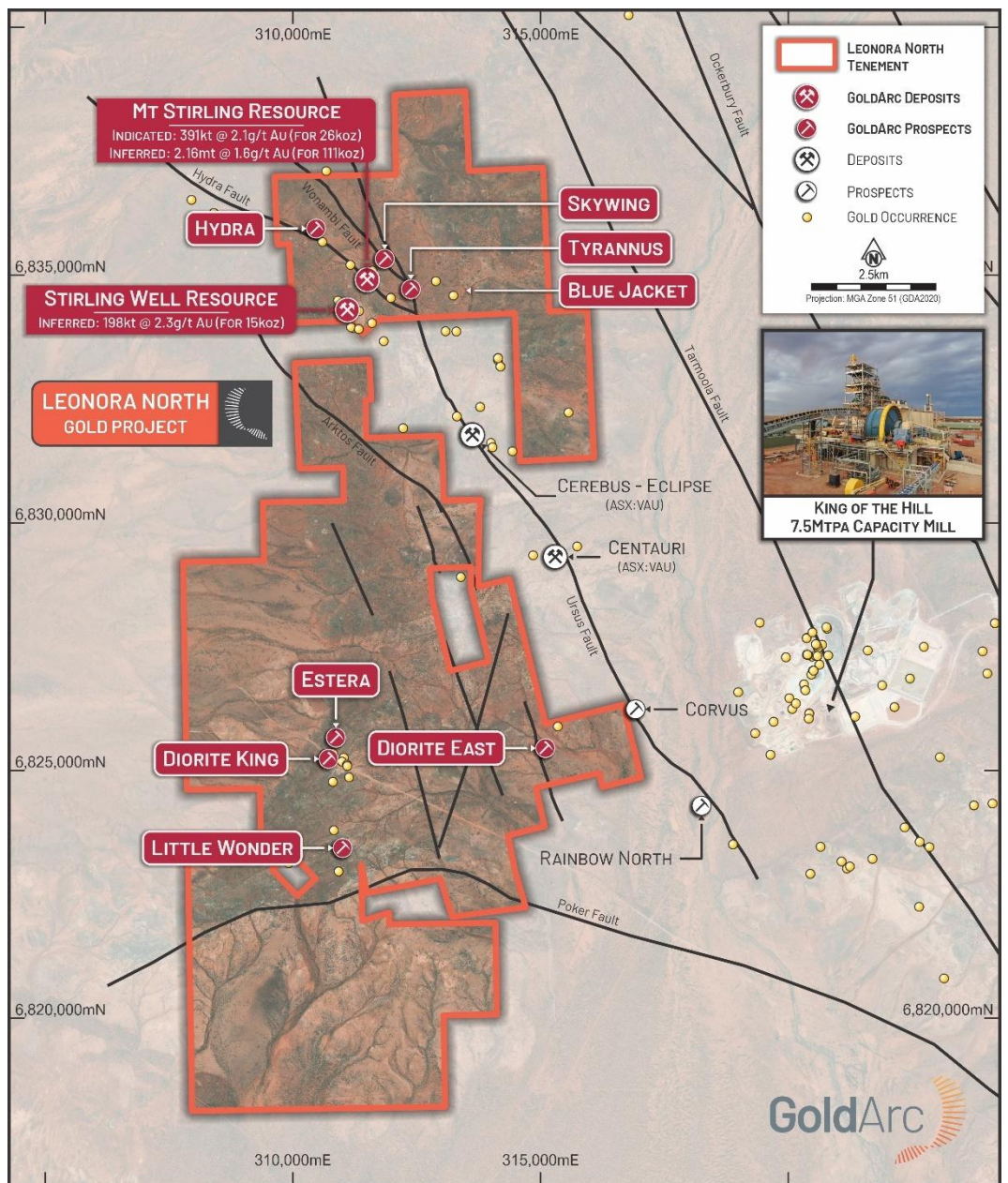


Figure 2 – Location of Leonora North Project

ASX:GA8

GoldArc Resources

goldarcres.com.au

104 Colin Street
West Perth WA 6005

+61 8 9420 8208



Next Steps

The Company is planning a systematic follow-up program focused on advancing these new anomalies toward drill-ready status. This work will include infill soil sampling, geological mapping, and rock chip sampling, prior to a planned AC drilling program.

Drilling will also be planned to test the strike extensions of the S1 and S2 anomalies, targeting extensions to the known mineralisation at Mt Stirling, Hydra, and Tyrannus.

This announcement has been authorised for release by the Board of Directors.

- ENDS -

Investors

Paul Stephen

Managing Director
GoldArc Resources Limited
info@goldarcres.com.au

Investor Relations

Madeline Howson

Investor Relations
Discover Investor Relations
madeline@discover.com.au

Forward Looking Statements Disclaimer

This announcement contains certain "forward-looking statements" and comments about future matters. Forward-looking statements can generally be identified by the use of forward-looking words such as, "expect", "anticipate", "likely", "intend", "should", "estimate", "target", "outlook", and other similar expressions and include, but are not limited to, indications of, and guidance or outlook on, future events, growth opportunities, exploration activities or the financial position or performance of the Company. You are cautioned not to place undue reliance on forward-looking statements. Any such statements, opinions and estimates in this release speak only as of the date hereof, are preliminary views and are based on assumptions and contingencies subject to change without notice. Forward-looking statements are provided as a general guide only. There can be no assurance that actual outcomes will not differ materially from these forward-looking statements. Any such forward-looking statement also inherently involves known and unknown risks, uncertainties and other factors and may involve significant elements of subjective judgement and assumptions that may cause actual results, performance and achievements to differ. Except as required by law the Company undertakes no obligation to finalise, check, supplement, revise or update forward-looking statements in the future, regardless of whether new information, future events or results or other factors affect the information contained in this announcement.

Competent Persons Statements

The information in this report as it relates to exploration results and geology is based on, and fairly represents, information and supporting documentation that was compiled by Mr. Ziggy Lubieniecki, who is a director, consultant and shareholder of the Company. Mr. Lubieniecki has sufficient experience which is relevant to the styles of mineralisation and types of deposit under consideration and to the activities which he is undertaking to qualify as a Competent Person as defined in the 2012 Edition of the Australasian Code for Reporting of Exploration Results, Mineral Resources and Ore Reserves'. Mr. Lubieniecki consents to the inclusion in the report of the matters based on the information in the form and context in which it appears.

The information in this announcement that relates to the Orion-Sapphire Mineral Resources is contained in the ASX announcement released on 28 May 2024. The information in this announcement that relates to the gold Mineral Resources for the Mt Stirling Project is contained in the ASX announcements released on 25 February 2019, 29 January 2020 and 5 September 2022. The Company confirms that it is not aware of any new information or data that materially affects the information in the relevant market announcements, and that all material assumptions and technical parameters underpinning the estimates in the relevant announcement continue to apply and have not materially changed. that the Company confirms that the form and context in which the Competent Persons findings are presented have not been materially modified from the original announcements.

ASX:GA8

GoldArc Resources

goldarcres.com.au

104 Colin Street
West Perth WA 6005

+618 9420 8208



ASX:GA8

GoldArc Resources

goldarcres.com.au

104 Colin Street
West Perth WA 6005

+61 8 9420 8208



Appendix 1 – JORC Code, 2012 Edition – Table 1

Section 1 – Sampling Techniques and Data

(Criteria in this section apply to all succeeding sections.)

Criteria	Commentary
Sampling techniques	<ul style="list-style-type: none"> No drilling is reported in this release. Soil samples were taken from below the organic layer (typically ~10cm below surface) and consisted of the -80 mesh fraction in most cases. Gold analyses were conducted using aqua regia AR25/MS- an established Industry-standard method for gold mineralisation Multi-element analyses were conducted via PXRF. The PXRF analyses are not reported herein.
Drilling techniques	<ul style="list-style-type: none"> No drilling is reported in this release.
Drill sample recovery	<ul style="list-style-type: none"> No drilling is reported in this release.
Logging	<ul style="list-style-type: none"> No drilling is reported in this release.
Sub-sampling techniques and sample preparation	<ul style="list-style-type: none"> No drilling is reported in this release. Soil samples were taken from below the organic layer (typically ~10cm below surface) and consisted of the minus 80 mesh fraction. This fraction was subsequently pulverised. Gold analyses were conducted using aqua regia AR25/MS- an established Industry-standard method for gold mineralisation Multi-element analyses were conducted via PXRF. The PXRF analyses are not reported herein.
Quality of assay data and laboratory tests	<ul style="list-style-type: none"> No drilling is reported in this release. Certified reference (CRM) samples and certified blank samples were inserted into the sample sequence at rate of 1 CRM and 1 blank per 25 samples. Duplicates were conducted at a rate not exceeding 1 duplicate per 50 samples.
Verification of sampling and assaying	<ul style="list-style-type: none"> No drilling is reported in this release. All sampling conducted is verified by a minimum of two company personnel apart from the Competent Person. Data from the field is transferred onto head office digital storage daily. Assay values below detection were stored in the database as minus the detection limit. Intervals with no samples were recorded in the sample table and excluded from the assay table in the database. Assay files were received electronically from the laboratory. No alterations have been made to primary assay data.
Location of data points	<ul style="list-style-type: none"> No drilling is reported in this release. Soil and rock chip sampling was located in 3D using hand-held GPS instruments.
Data spacing and distribution	<ul style="list-style-type: none"> No drilling is reported in this release. Soil sampling spacing is considered appropriate to dispersions.
Orientation of data in relation to geological structure	<ul style="list-style-type: none"> No drilling is reported in this release. Soil traverses were taken at an orientation dominantly perpendicular to structure.
Sample security	<ul style="list-style-type: none"> Samples are packed into paper bags which are sealed and conveyed to Intertek in Kalgoorlie by GoldArc personnel.
Audits or reviews	<ul style="list-style-type: none"> All assay data has been reviewed by two company personnel. No external audits have been conducted.

Section 2 – Reporting of Exploration Results

(Criteria in this section apply to all succeeding sections)

Criteria	Commentary
Mineral tenement and land tenure status	<ul style="list-style-type: none"> • Areas discussed in herein are located on • M37/1306 • M37/1313 • M37/1312 • P37/8831 • P37/8832 • P37/8833 • An agreement between Asra Minerals and Ross Crew has been signed whereby Ross Crew retains a royalty on any production. • The Mt Stirling Gold Project in the Leonora Gold District of Western Australia comprises sixty-nine leases – 6 Mining leases, 1 Exploration lease and 62 Prospecting leases, The combined area of the project is approximately 17,876 ha. • There is a 2% Royalty to a third party for minerals on these licenses. • There are no known impediments to obtaining a licence to operate.
Exploration done by other parties	<ul style="list-style-type: none"> • Mt Stirling Gold Tenements have undergone multiple drill programs over a protracted period focusing on areas around the historical prospects of Diorite King and Mt Stirling Well. Numerous significant intercepts occur outside of mined areas. • Investments in 2014. A&C completed Aircore and RC drilling. • Hill Minerals 1984 Diorite King shaft sampling and RAB drilling • Esso Minerals 1986 mapping, RAB drilling • Mt Edon Mines 1988 mapping, rock chip sampling, RAB drilling, RC drilling during 1997-1998. • Tarmoola Australia 200-2001 mapping and RC drilling on the Ursus Fault. • Jupiter Mines 2006-2010 geological reconnaissance, data acquisition, mapping and research on Kurradjong Project. 2006 AC around Diorite King, Golden King and Rose of Diorite. 93 holes for 1767m. • Bligh Resources and BMGS in 2010 to compile data for Diorite King. Mapping by Jon Standing, Southern Geoscience Consultants for geophysical interpretation in 2012. • Torian Resources (predecessor to Asra) engaged SGC to interpret the whole Mt Stirling Project. RC, diamond and vacuum drilling at Mt Stirling and Yttria REE deposit.
Geology	<ul style="list-style-type: none"> • The Mt Stirling Gold Project is located in the central part of the Norseman-Wiluna belt of the Eastern Goldfields terrane. • The project area is in the hinge zone of the gently north-plunging Tarmoola anticline. The greenstone sequence is thought to overlie a major detachment fault separating a granite gneiss complex (Leonora Batholith) from the overlying greenstones. The detachment fault hosts the Sons of Gwalia deposit at Leonora. The project area is an area of extensive gabbro-dolerite-basalt outcrop and subcrop. The mafic rocks dip about the Tarmoola Anticline variably at 30 to 60 degrees and can be divided into predominantly massive basalts in the west and pillowed, variolitic basalts in the east. The Mt Stirling syenogranite/monzogranite has intruded the massive basalts (Evans,1998). • Project stratigraphy consists of a succession of variolitic, pillowed high Mg basalts containing differentiated dolerite/gabbro sills. The two basalt lithotypes are divided by a central shear zone which trends 340° in the south and 315° in the north. The shear zone consists of chlorite±tremolite/actinolite schist with narrow quartz veins. Widely spaced sinistral shear bands trending 300-320° overprint the main foliation. Some quartz veins are compatible with the sinistral movement indicated by the shear bands. The main well-developed steeply (65-80o) east-dipping fabric locally contains a well-developed sub horizontal mineral lineation which appears to be doubly plunging. No alteration is observed within the shear zone at surface. The main shear zone and shear bands are interpreted to be D2 /- D3 structures. • The Mt Stirling syenogranite/monzogranite outcrops to the north of the Diorite CRG leases. Extensive millimetre to centimetre scale quartz veining is present with sericite/muscovite-epidote-pyrite alteration selvages adjacent to many veins. Alteration is not pervasive and is primarily associated with veining. Multiple quartz vein sets are present, producing local stockwork arrays. Numerous felsic dykes and plugs observed throughout the area possibly representing apophyses of the monzogranite pluton.



For personal use only
GoldArc



ASX:GA8

GoldArc Resources

goldarcres.com.au

104 Colin Street
West Perth WA 6005

+61 8 9420 8208



Criteria	Commentary
	<ul style="list-style-type: none"> All significant results for completed AC and RC drilling have been tabulated. The extent of drilling is shown with diagrams included in this announcement.
Drill hole Information	<ul style="list-style-type: none"> No drilling is reported in this release
Data aggregation methods	<ul style="list-style-type: none"> No drilling is reported in this release. Soil sampling is depicted as point data and/or contours based on point data. No data aggregation has been conducted.
Relationship between mineralisation widths and intercept lengths	<ul style="list-style-type: none"> No drilling is reported in this release
Diagrams	<ul style="list-style-type: none"> Suitable figures have been included in the body of the announcement.
Balanced reporting	<ul style="list-style-type: none"> Key results and conclusions have been included in the body of the announcement.
Other substantive exploration data	<ul style="list-style-type: none"> Compilation of all historical exploration data at the project is underway and will be stored digitally.
Further work	<ul style="list-style-type: none"> Follow up field work is planned.

ASX:GA8

GoldArc Resources

goldarcres.com.au

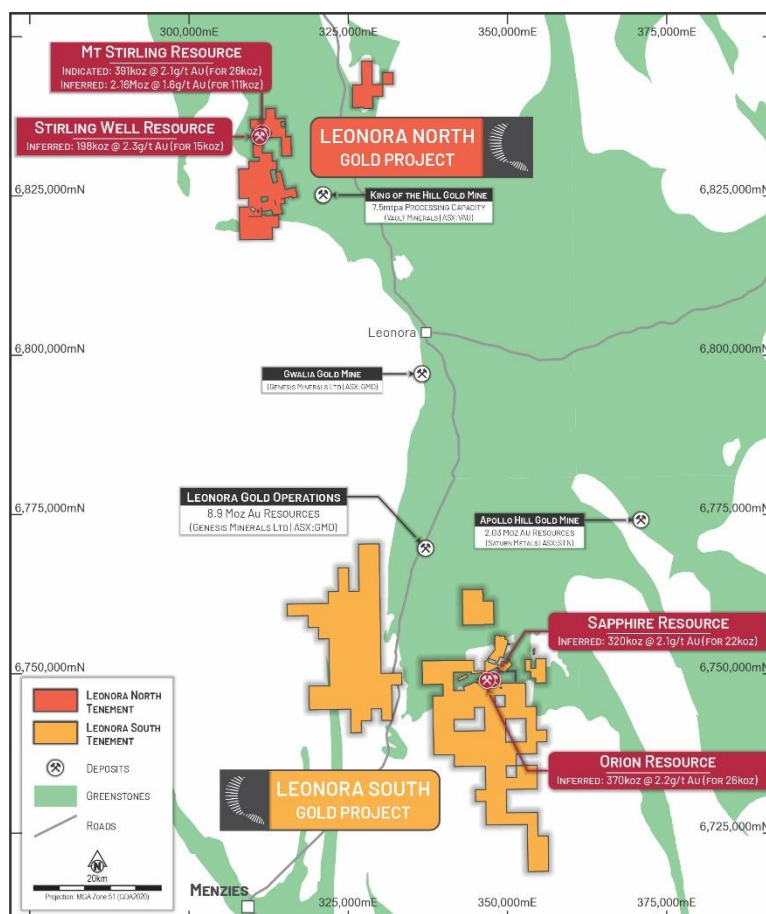
104 Colin Street
West Perth WA 6005

+618 9420 8208



About GoldArc Resources

GoldArc Resources Limited (ASX:GA8) is a Western Australian focused mineral exploration company with a portfolio of highly prospective gold projects located in the world-class Leonora and Kookynie districts of the Eastern Goldfields. GoldArc's strategy is focused on growing its existing 200,000oz JORC resource base and making new, large-scale discoveries through a disciplined and systematic approach to exploration.



GoldArc Resources Total JORC Mineral Resources

GoldArc Gold Projects	Category	Tonnes	Gold Grade (g/t Au)	Gold Ounces
Leonora North - Mt Stirling	Indicated	391,000	2.1	26,000
	Inferred	2,158,000	1.6	111,000
Leonora North - Stirling Well	Inferred	198,000	2.3	15,000
Leonora South - Orion	Inferred	370,000	2.2	26,409
Leonora South - Sapphire	Inferred	320,000	2.1	21,605
Total		3,437,000	1.82	200,064

ASX:GA8

GoldArc Resources

goldarcres.com.au

104 Colin Street
West Perth WA 6005

+61 8 9420 8208

