



## High Grade Gold Results Continue at Van Uden

### Highlights

- High grade assays returned from drilling of the northern extensions at Van Uden
- High tenor results include:
  - 15m @ 4.06 g/t Au, including 3m @ 14.63 g/t Au
  - 5m @ 1.46 g/t Au, including 2m @ 2.58 g/t Au
- Results expected to add gold ounces to the current mineral resource
- Drilling ramp up with deeper holes to commence this week and ongoing results over the coming weeks

TG Metals Limited (**TG Metals** or the **Company**) (ASX:TG6) is pleased to provide the results of drilling at the Van Uden Gold Project (**Van Uden** or the **Project**).

Drilling consisted of shallow (less than 110m depth) reverse circulation (RC) drillholes at the Van Uden gold deposit, targeting resource expansion and geological understanding. Result highlights include:

- 15m @ 4.06 g/t Au from 17.0m, including 3m @ **14.63** g/t Au
- 13m @ 1.12 g/t Au from 22.0m
- 5m @ 1.46 g/t Au from 40.0m, including 2m @ **2.58** g/t Au
- 7m @ 1.09 g/t Au from 15.0m, including 3m @ **1.71** g/t Au
- 5m @ 0.91 g/t Au from 1.0m, including 2m @ **1.44** g/t Au

#### **TG Metals CEO, Mr. David Selfe stated;**

*“The shallow drilled parts of the Van Uden deposit are proving to be a fertile ground for easy resource growth. High grades are a bonus but the shallow primary mineralisation coupled with mineralised laterite above should assist greatly with future economic studies planned for early 2026 following a new mineral resource estimate in the new year.*

*The extensional drilling of the broader Van Uden resource will enter a new phase later this week with the commencement of deeper drilling on extensions of the resource. We have a lot more drilling to do and samples are in the laboratory pending analysis. We look forward to releasing results as they come hand.*

*The Gold City prospect maiden drilling results are also eagerly awaited.”*

### Van Uden Drilling

The purpose of this drilling campaign is to expand on the current Van Uden mineral resource estimate (MRE) via infill and down dip extensions and provide data to improve geological understanding. These results will add to the data for a revision of the MRE in Q1 2026.

All drill assays reported are located within the northern half of the Van Uden project. Figure 1 shows the location of the drillholes.

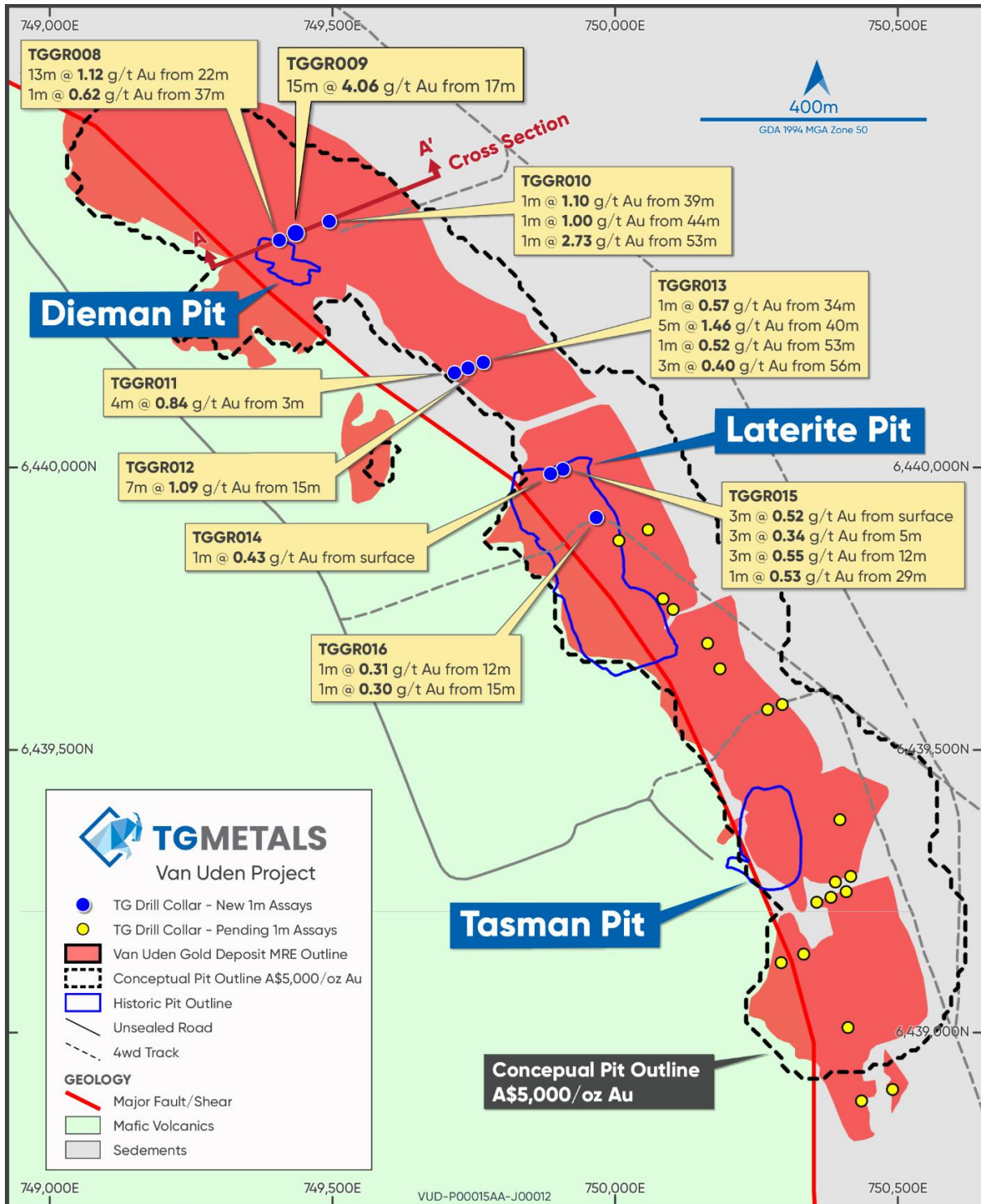


Figure 1 – New Resource Drilling Collars Showing Select Intercept Highlights referenced on page 1

For personal use only

Cross section Figure 2 shows a typical section through the new drilling and the previous historical drilling. The full significant assay results above 0.3g/t Au are provided in Table 2.

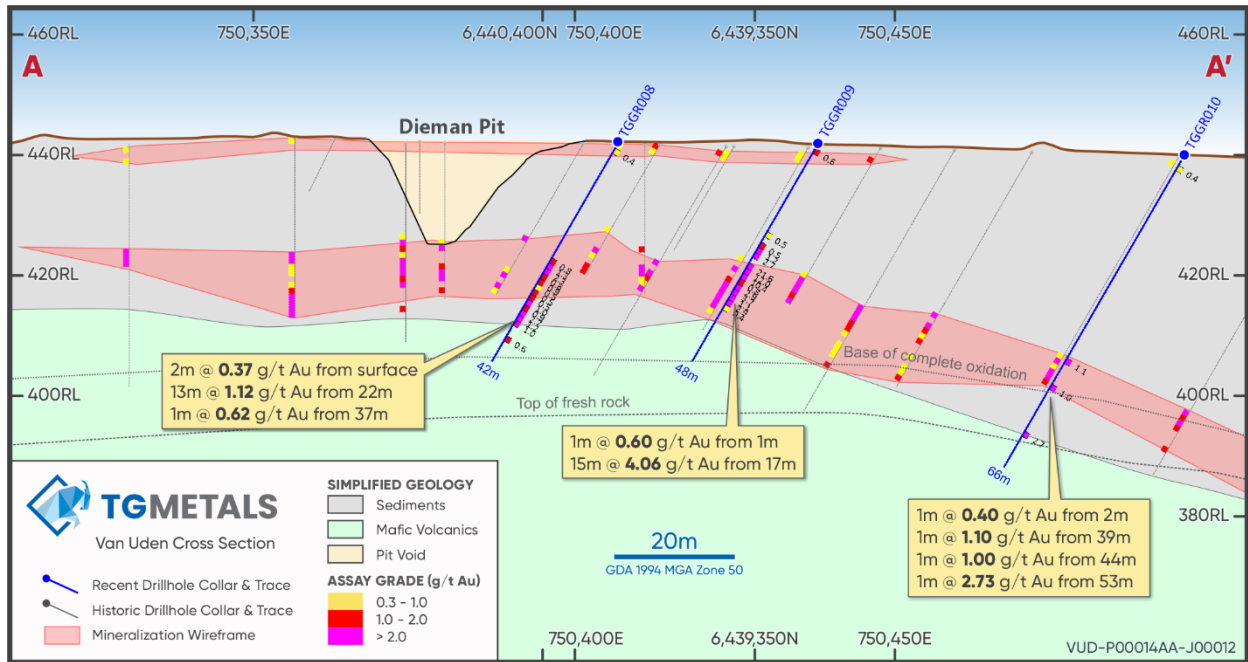


Figure 2 – Cross Section A-A' Showing New Drilling, Historical Drilling and Van Uden Mineralisation Envelope

The RC drilling was conducted with a truck mounted Hydco-Moses drill rig. This rig is suitable for shallow drilling (~110m) in the oxidised to semi-oxidised regolith. A total of 9 drillholes are included in this report for 360m of RC drilling. The drillhole dips are all -60° at an azimuth of 250° to align with the previous historical grid. See Table 1 for drill collar information.

The reported drilling is in the northern half of the resource area. Additional drilling has been completed in the southern resource area with assay results pending. See Figure 1 for drill collar locations.

Individual 1m samples were assayed using the Photon assay technique, which utilises a larger sample charge than fire assay. This has the potential to reduce the “nugget effect” caused by coarse gold particles. Coarse gold is noted in panning of the high grade samples from drillhole TGGR009, from 23m to 24m, with assays returning 1m @ 21.55 g/t Au. Of note is a discernable increase in mineralisation width and grade where the new drillholes are in close proximity to historical drillholes. See Figure 2 cross section. The coarse gold present may be a factor in this difference and further check drilling (twinning) and check assaying such as screen fire assay may be warranted.

For personal use only

**Table 1 – Drillhole Collar Information GDA94, Zone 50**

HOLE ID	Dip (°)	Azimuth (°)	EASTING (m)	NORTHING (m)	RL (mASL)	Depth (m)
TGGR008	-60.0	250.0	749407.000	6440404.000	442.000	42.0
TGGR009	-60.0	250.0	749438.000	6440416.000	442.000	42.0
TGGR010	-60.0	250.0	749495.000	6440437.000	440.000	60.0
TGGR011	-60.0	250.0	749716.000	6440169.000	434.000	24.0
TGGR012	-60.0	250.0	749740.000	6440178.000	435.000	42.0
TGGR013	-60.0	250.0	749767.000	6440188.000	435.000	54.0
TGGR014	-60.0	250.0	749886.000	6439991.000	430.000	18.0
TGGR015	-60.0	250.0	749908.000	6439999.000	430.000	30.0
TGGR016	-60.0	250.0	749967.000	6439914.000	428.000	48.0

### Follow-up Work

The drilling underway at Van Uden will be used to update the current resource model (MRE)

A larger RC drill rig will commence drilling the planned deeper drillholes targeting down dip extensions which have not previously been drilled.

Assays are pending for the maiden exploration drilling program recently completed at the Gold City prospect, 20km south of the Van Uden resource area.

Drill testing the full 6.5km mineralised strike of the Van Uden shear will be undertaken in tandem with the current drilling, subsequent to the Program of Work approvals, refer to Figure 3.

For personal use only

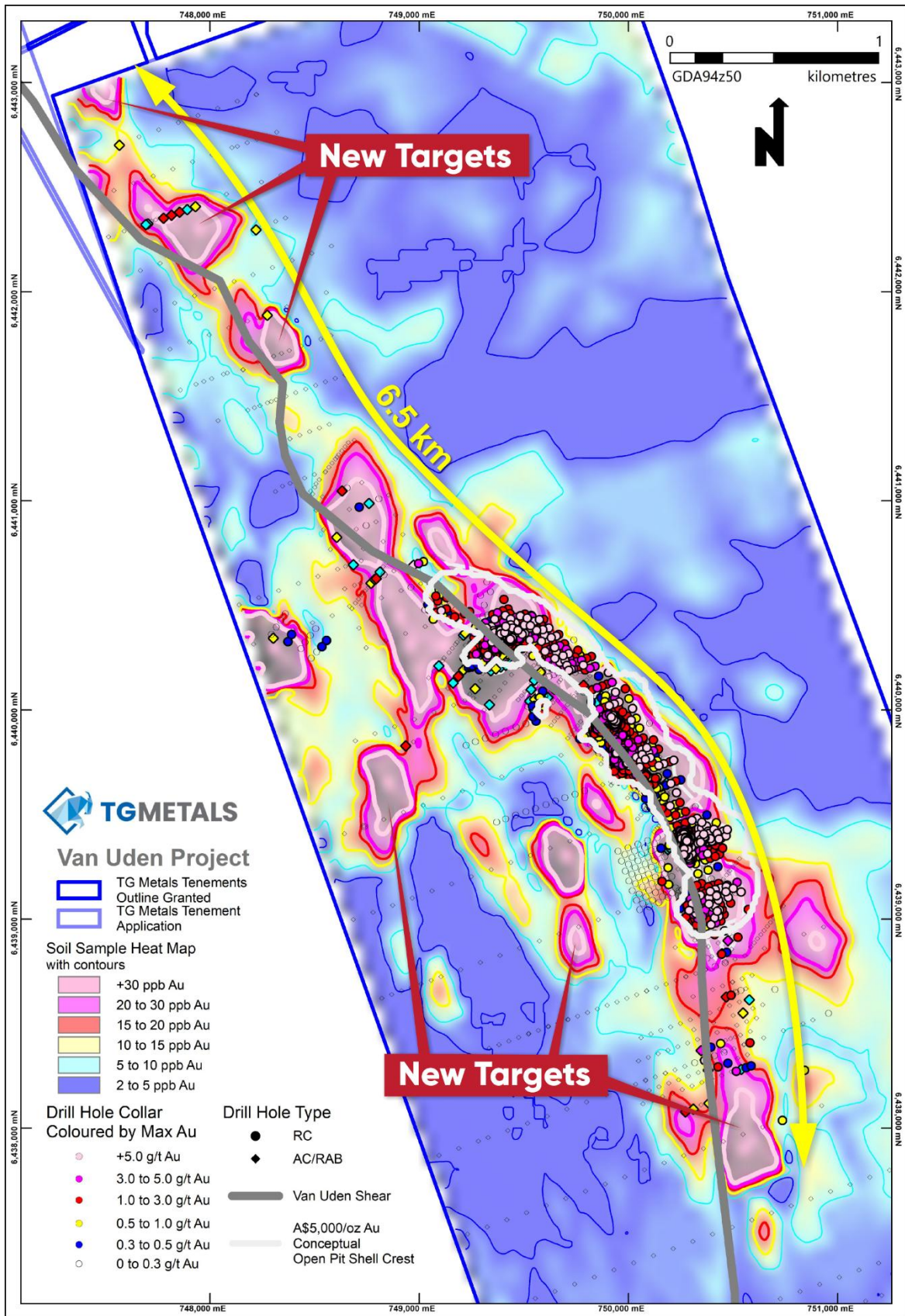


Figure 3 – Van Uden 6.5Km strike extension and Footwall drill targets.

For personal use only



## Van Uden Gold Project Description

The Project is located on the Forrestania Greenstone Belt, Figure 4, 90km east-northeast of Hyden and 120km south of Southern Cross. It is close to the Marvel Loch (producing) and Westonia - Edna May (care & maintenance) gold processing Plants and is 130km from the Company's established Burmeister lithium deposit at the Lake Johnston Project.

Van Uden Gold consists of an Indicated and Inferred Mineral Resource as per Table A below on four granted mining leases, four granted exploration licences, one exploration licence application and two miscellaneous licences (for haul roads). The Project lies to the west of the Mt Holland lithium mine, south of the operating Marvel Loch gold Plant, and southeast of the Edna May gold Plant.

Mineral Resource Estimate for the Van Uden Gold Deposit - May 2025									
Material	Indicated			Inferred			Total		
	Tonnes	Grade (Au g/t)	Gold (Oz)	Tonnes	Grade (Au g/t)	Gold (Oz)	Tonnes	Grade (Au g/t)	Gold (Oz)
Laterite	234,000	0.9	6,940	525,000	0.7	11,800	759,000	0.7	18,740
Oxide	867,000	1.2	34,200	1,141,000	1.0	38,200	2,008,000	1.0	72,400
Transitional	291,000	1.1	10,700	770,000	1.1	26,500	1,061,000	1.1	37,200
Fresh	318,000	1.6	16,500	2,207,000	1.2	82,300	2,525,000	1.2	98,800
<b>Total</b>	<b>1,710,000</b>	<b>1.2</b>	<b>68,340</b>	<b>4,643,000</b>	<b>1.2</b>	<b>158,800</b>	<b>6,353,000</b>	<b>1.1</b>	<b>227,140</b>

**Table A: MRE – Van Uden Gold Deposit**

The Mineral Resources statement conforms to the Australasian Code for Reporting of Exploration Results, Mineral Resources and Ore Reserves (JORC Code) 2012 Edition. All tonnages are dry metric tonnes. It has been reported at a cut-off grade of 0.35 g/t Au by area within a A\$5,000/oz Au optimised pit shell based on mining parameters and operating costs typical for Australian open pit extraction deposits of a similar scale and geology. Minor discrepancies may occur due to rounding of appropriate significant figures.

The resources comply with the Reasonable Prospects for Eventual Economic Extraction (RPEEE), a key principle in mineral resource reporting that requires the qualified person to demonstrate that a mineral deposit has the potential to be economically extracted in the future.

### About TG Metals

TG Metals is an ASX listed company focused on exploring and developing gold and lithium assets at its wholly owned Lake Johnston Project and 80% owned Van Uden Gold Project in the stable jurisdiction of Western Australia. The Lake Johnston Project hosts the Burmeister high grade lithium deposit, Jaegermeister lithium pegmatites and several surrounding lithium prospects. Burmeister is in proximity to four lithium processing plants and undeveloped deposits. The Van Uden Gold Project contains past producing gold mines and is in proximity to operating gold processing Plants.

**Authorised for release by TG Metals Board of Directors.**

#### Contact

Mr David Selfe  
Chief Executive Officer  
Email: [info@tgmets.com.au](mailto:info@tgmets.com.au)

#### Investor Relations

Evy Litopoulous  
ResolveIR  
Email: [evy@resolveir.com](mailto:evy@resolveir.com)

For personal use only

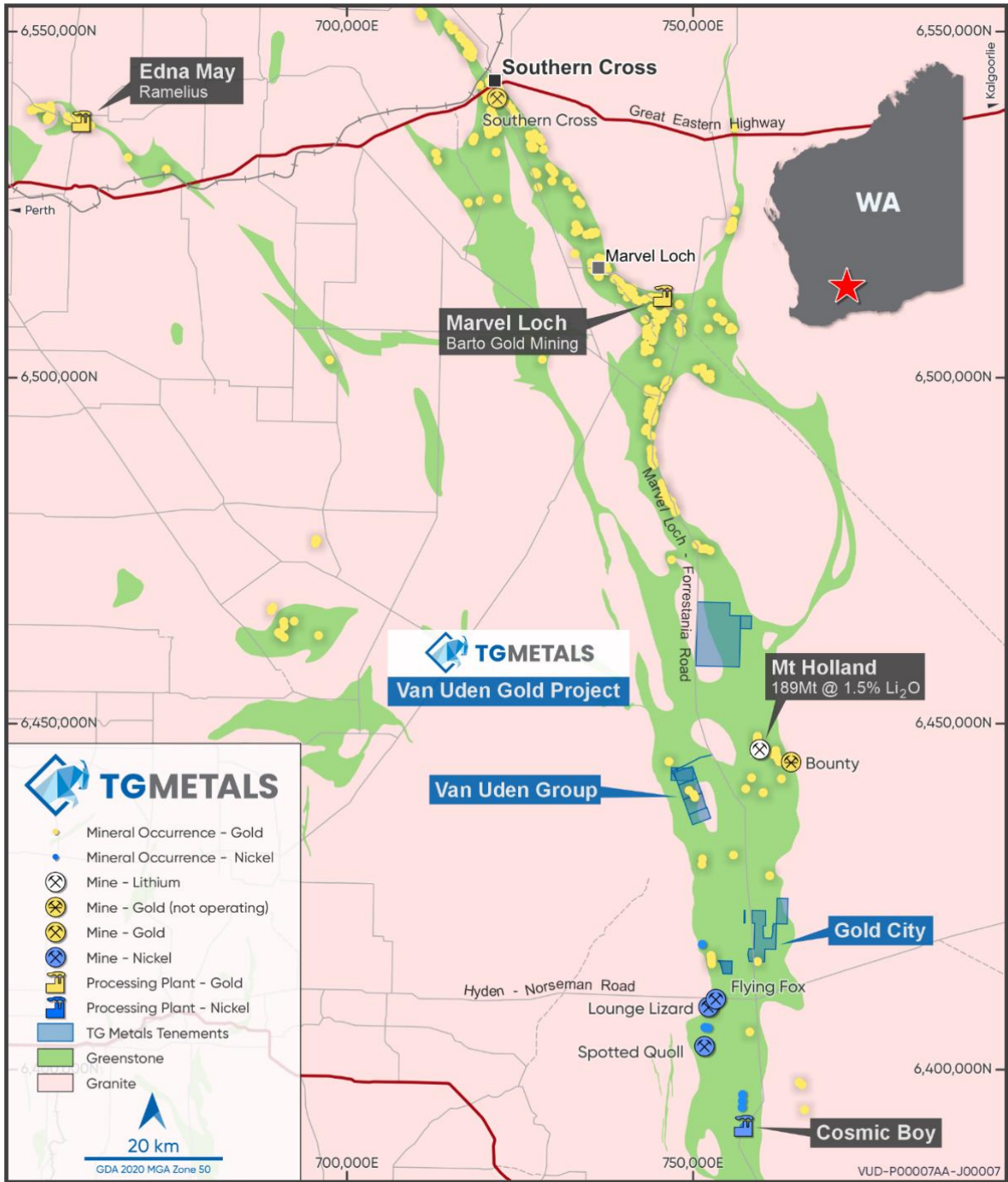


Figure 4 – Location Map showing TG Metals' Van Uden Gold Project

For personal use only



## Competent Person Statement

Information in this announcement that relates to exploration results, exploration strategy, exploration targets, geology, drilling and mineralisation is based on information compiled by Mr David Selfe who is a Fellow of the Australasian Institute of Mining and Metallurgy and an employee of TG Metals Limited. Mr Selfe has sufficient experience that is relevant to the style of mineralisation and type of deposit under consideration and to the activities that he is undertaking to qualify as a Competent Person as defined in the 2012 Edition of the Australasian Code for Reporting of Exploration Results, Mineral Resources and Ore Reserves. Mr Selfe has consented to the inclusion in this report of matters based on their information in the form and context in which it appears. Mr Selfe considers that the information in this announcement is an accurate representation of the available data and studies for the Van Uden Gold Project.

## Forward Looking Statements

This announcement may contain certain statements that may constitute “forward looking statements”. Such statements are only predictions and are subject to inherent risks and uncertainties, which could cause actual values, results, performance achievements to differ materially from those expressed, implied or projected in any forward looking statements.

Forward-looking statements are statements that are not historical facts. Words such as “expect(s)”, “feel(s)”, “believe(s)”, “will”, “may”, “anticipate(s)” and similar expressions are intended to identify forward-looking statements. These statements include, but are not limited to statements regarding future production, resources or reserves and exploration results. All such statements are subject to certain risks and uncertainties, many of which are difficult to predict and generally beyond the control of the Company, that could cause actual results to differ materially from those expressed in, or implied or projected by, the forward-looking information and statements. These risks and uncertainties include, but are not limited to: (i) those relating to the interpretation of drill results, the geology, grade and continuity of mineral deposits and conclusions of economic evaluations, (ii) risks relating to possible variations in reserves, grade, planned mining dilution and ore loss, or recovery rates and changes in project parameters as plans continue to be refined, (iii) the potential for delays in exploration or development activities or the completion of feasibility studies, (iv) risks related to commodity price and foreign exchange rate fluctuations, (v) risks related to failure to obtain adequate financing on a timely basis and on acceptable terms or delays in obtaining governmental approvals or in the completion of development or construction activities, and (vi) other risks and uncertainties related to the Company’s prospects, properties and business strategy. Our audience is cautioned not to place undue reliance on these forward-looking statements that speak only as of the date hereof, and we do not undertake any obligation to revise and disseminate forward-looking statements to reflect events or circumstances after the date hereof, or to reflect the occurrence of or non-occurrence of any events.

The Company believes that it has a reasonable basis for making the forward-looking Statements in the presentation based on the information contained in this and previous ASX announcements.

The Company is not aware of any new information or data that materially affects the information included in this ASX release, and the Company confirms that, to the best of its knowledge, all material assumptions and technical parameters underpinning the exploration results in this release continue to apply and have not materially changed.

**Table 2 – Drill Assay Table – NSI=no significant Intercept (<0.3g/tAu), All 1m intervals**

HOLE ID	FROM	TO	PROSPECT	Au (g/t)	HOLE ID	FROM	TO	PROSPECT	Au (g/t)
TGGR008	0	1	Van Uden North	0.32	TGGR012	0	15	Van Uden North	NSI
TGGR008	1	2	Van Uden North	0.42	TGGR012	15	16	Van Uden North	0.30
TGGR008	2	22	Van Uden North	NSI	TGGR012	16	17	Van Uden North	0.24
TGGR008	22	23	Van Uden North	0.82	TGGR012	17	18	Van Uden North	1.04
TGGR008	23	24	Van Uden North	1.30	TGGR012	18	19	Van Uden North	2.62
TGGR008	24	25	Van Uden North	2.31	TGGR012	19	20	Van Uden North	1.48
TGGR008	25	26	Van Uden North	0.75	TGGR012	20	21	Van Uden North	0.93
TGGR008	26	27	Van Uden North	0.91	TGGR012	21	22	Van Uden North	1.03
TGGR008	27	28	Van Uden North	0.48	TGGR012	22	42	Van Uden North	NSI
TGGR008	28	29	Van Uden North	0.54	TGGR013	0	34	Van Uden North	NSI
TGGR008	29	30	Van Uden North	0.53	TGGR013	34	35	Van Uden North	0.57
TGGR008	30	31	Van Uden North	1.03	TGGR013	35	38	Van Uden North	NSI
TGGR008	31	32	Van Uden North	0.88	TGGR013	38	39	Van Uden North	0.29
TGGR008	32	33	Van Uden North	2.73	TGGR013	39	40	Van Uden North	0.24
TGGR008	33	34	Van Uden North	1.22	TGGR013	40	41	Van Uden North	2.66
TGGR008	34	35	Van Uden North	1.02	TGGR013	41	42	Van Uden North	2.51
TGGR008	35	37	Van Uden North	NSI	TGGR013	42	43	Van Uden North	0.67
TGGR008	37	38	Van Uden North	0.62	TGGR013	43	44	Van Uden North	0.89
TGGR008	38	42	Van Uden North	NSI	TGGR013	44	45	Van Uden North	0.55
TGGR009	0	1	Van Uden North	0.17	TGGR013	45	53	Van Uden North	NSI
TGGR009	1	2	Van Uden North	0.60	TGGR013	53	54	Van Uden North	0.52
TGGR009	2	17	Van Uden North	NSI	TGGR013	54	56	Van Uden North	NSI
TGGR009	17	18	Van Uden North	0.49	TGGR013	56	57	Van Uden North	0.42
TGGR009	18	19	Van Uden North	0.02	TGGR013	57	58	Van Uden North	0.36
TGGR009	19	20	Van Uden North	0.54	TGGR013	58	59	Van Uden North	0.41
TGGR009	20	21	Van Uden North	1.19	TGGR013	59	60	Van Uden North	0.19
TGGR009	21	22	Van Uden North	2.71	TGGR014	0	1	Van Uden North	0.43
TGGR009	22	23	Van Uden North	0.09	TGGR014	1	18	Van Uden North	NSI
TGGR009	23	24	Van Uden North	21.55	TGGR015	0	1	Van Uden North	0.54
TGGR009	24	25	Van Uden North	11.96	TGGR015	1	2	Van Uden North	0.56
TGGR009	25	26	Van Uden North	10.37	TGGR015	2	3	Van Uden North	0.45
TGGR009	26	27	Van Uden North	0.85	TGGR015	3	4	Van Uden North	0.26
TGGR009	27	28	Van Uden North	2.90	TGGR015	4	5	Van Uden North	0.27
TGGR009	28	29	Van Uden North	3.73	TGGR015	5	6	Van Uden North	0.34
TGGR009	29	30	Van Uden North	1.09	TGGR015	6	7	Van Uden North	0.15
TGGR009	30	31	Van Uden North	2.94	TGGR015	7	8	Van Uden North	0.53
TGGR009	31	32	Van Uden North	0.43	TGGR015	8	12	Van Uden North	NSI
TGGR009	32	48	Van Uden North	NSI	TGGR015	12	13	Van Uden North	0.39
TGGR010	0	1	Van Uden North	0.11	TGGR015	13	14	Van Uden North	0.81
TGGR010	1	2	Van Uden North	0.09	TGGR015	14	15	Van Uden North	0.44
TGGR010	2	3	Van Uden North	0.40	TGGR015	15	29	Van Uden North	NSI
TGGR010	3	39	Van Uden North	NSI	TGGR015	29	30	Van Uden North	0.53
TGGR010	39	40	Van Uden North	1.10	TGGR015	30	36	Van Uden North	NSI
TGGR010	40	41	Van Uden North	0.18	TGGR016	0	1	Van Uden North	0.12
TGGR010	41	42	Van Uden North	0.26	TGGR016	1	2	Van Uden North	0.68
TGGR010	42	43	Van Uden North	0.14	TGGR016	2	3	Van Uden North	1.84
TGGR010	44	45	Van Uden North	1.00	TGGR016	3	4	Van Uden North	1.04
TGGR010	45	53	Van Uden North	NSI	TGGR016	4	5	Van Uden North	0.68
TGGR010	53	54	Van Uden North	2.73	TGGR016	5	6	Van Uden North	0.30
TGGR010	54	66	Van Uden North	NSI	TGGR016	6	11	Van Uden North	NSI
TGGR011	0	3	Van Uden North	NSI	TGGR016	11	12	Van Uden North	0.29
TGGR011	3	4	Van Uden North	0.57	TGGR016	12	13	Van Uden North	0.31
TGGR011	4	5	Van Uden North	1.03	TGGR016	13	14	Van Uden North	0.15
TGGR011	5	6	Van Uden North	0.38	TGGR016	14	15	Van Uden North	0.05
TGGR011	6	7	Van Uden North	1.36	TGGR016	15	16	Van Uden North	0.30
TGGR011	7	24	Van Uden North	NSI	TGGR016	16	23	Van Uden North	NSI

# JORC Code, 2012 Edition – Table 1

## Section 1 Sampling Techniques and Data

(Criteria in this section apply to all succeeding sections.)

Criteria	JORC Code explanation	Commentary
Sampling techniques	<ul style="list-style-type: none"> <li>Nature and quality of sampling (eg cut channels, random chips, or specific specialised industry standard measurement tools appropriate to the minerals under investigation, such as down hole gamma sondes, or handheld XRF instruments, etc). These examples should not be taken as limiting the broad meaning of sampling.</li> <li>Include reference to measures taken to ensure sample representivity and the appropriate calibration of any measurement tools or systems used.</li> <li>Aspects of the determination of mineralisation that are Material to the Public Report.</li> <li>In cases where 'industry standard' work has been done this would be relatively simple (eg 'reverse circulation drilling was used to obtain 1 m samples from which 3 kg was pulverised to produce a 30 g charge for fire assay'). In other cases more explanation may be required, such as where there is coarse gold that has inherent sampling problems. Unusual commodities or mineralisation types (eg submarine nodules) may warrant disclosure of detailed information.</li> </ul>	<ul style="list-style-type: none"> <li>All holes were sampled at 1 m intervals using an on-board Ox Cyclone Sampling system with fixed cone splitter engineered for the rig.</li> <li>Two samples (Original + Duplicate) were collected each metre, representing 12.5 % of total cyclone discharge per split.</li> <li>Certified reference materials (CRMs) were inserted every 20 samples, and coarse blanks every 40 samples. All samples were dry.</li> <li>Samples were transported to Laboratory: SGS Australia Pty Ltd, Kalgoorlie WA (17 Stockyard Way) for PhotonAssay™ PAAU02, two-cycle analysis on pulverised material.</li> </ul>
Drilling techniques	<ul style="list-style-type: none"> <li>Drill type (eg core, reverse circulation, open-hole hammer, rotary air blast, auger, Bangka, sonic, etc) and details (eg core diameter, triple or standard tube, depth of diamond tails, face-sampling bit or other type, whether core is oriented and if so, by what method, etc).</li> </ul>	<ul style="list-style-type: none"> <li>Reverse-circulation (RC) drilling was undertaken using a Hydro Moses truck mounted rig (JDC Drilling, Southern Cross WA)</li> <li>The rig was equipped with a: <ul style="list-style-type: none"> <li>face sampling pneumatic hammer,</li> <li>ELGI 350 PSI, 900cfm Compressor</li> <li>700 PSI @ 1400 CFM Hurricane auxiliary booster</li> <li>KL remote rod handler, and</li> <li>TJM hands free break out system.</li> </ul> </li> </ul>
Drill sample recovery	<ul style="list-style-type: none"> <li>Method of recording and assessing core and chip sample recoveries and results assessed.</li> <li>Measures taken to maximise sample recovery and ensure representative nature of the samples.</li> <li>Whether a relationship exists between sample recovery and grade and whether sample bias may have occurred due to preferential loss/gain of fine/coarse material.</li> </ul>	<ul style="list-style-type: none"> <li>Sample recovery was visually assessed and recorded by comparing the two splitter outputs each metre.</li> <li>All samples were dry with negligible loss.</li> <li>Given the dry conditions and fixed splitter configuration, no material bias is expected.</li> </ul>

Criteria	JORC Code explanation	Commentary
Logging	<ul style="list-style-type: none"> <li>• Whether core and chip samples have been geologically and geotechnically logged to a level of detail to support appropriate Mineral Resource estimation, mining studies and metallurgical studies.</li> <li>• Whether logging is qualitative or quantitative in nature. Core (or costean, channel, etc) photography.</li> <li>• The total length and percentage of the relevant intersections logged.</li> </ul>	<ul style="list-style-type: none"> <li>• RC drill cutting of the metre interval was sieved and placed into a chip tray for geological logging and future reference. Clay intervals in regolith were not sieved, however any remnant rock/hard material were sieved and washed for identification.</li> <li>• TG Metals Limited geological logging system: <ul style="list-style-type: none"> <li>○ Recognises fresh rock vs regolith.</li> <li>○ Is both qualitative and quantitative.</li> <li>○ Industry and geological standards were followed recording every detail observed.</li> <li>○ Every interval (m) drilled was logged.</li> <li>○ 20m interval Chip trays were labelled and used to store a small representative sample for future reference.</li> </ul> </li> </ul>
Sub-sampling techniques and sample preparation	<ul style="list-style-type: none"> <li>• If core, whether cut or sawn and whether quarter, half or all core taken.</li> <li>• If non-core, whether riffled, tube sampled, rotary split, etc and whether sampled wet or dry.</li> <li>• For all sample types, the nature, quality and appropriateness of the sample preparation technique.</li> <li>• Quality control procedures adopted for all sub-sampling stages to maximise representivity of samples.</li> <li>• Measures taken to ensure that the sampling is representative of the in situ material collected, including for instance results for field duplicate/second-half sampling.</li> <li>• Whether sample sizes are appropriate to the grain size of the material being sampled.</li> </ul>	<ul style="list-style-type: none"> <li>• Samples were split at the rig using a fixed cone splitter, producing two by 12.5 % sub-samples per metre.</li> <li>• All samples were transported to SGS Kalgoorlie for preparation and PhotonAssay™ analysis.</li> <li>• Laboratory preparation (SGS Kalgoorlie) included: <ul style="list-style-type: none"> <li>○ Drying at 105 °C (&lt; 3 kg) — G_DRY</li> <li>○ Crushing 90 % &lt; 3.35 mm — G_CRU_KG</li> <li>○ Pulverising 85 % &lt; 75 µm — G_PUL</li> <li>○ 500g PhotonAssay™ jar filled from pulverised material</li> </ul> </li> <li>• Sample weights were recorded by SGS on receipt.</li> <li>• CRMs and blanks returned results within expected limits.</li> <li>• Field duplicates retained but not yet analysed.</li> </ul>
Quality of assay data and laboratory tests	<ul style="list-style-type: none"> <li>• The nature, quality and appropriateness of the assaying and laboratory procedures used and whether the technique is considered partial or total.</li> <li>• For geophysical tools, spectrometers, handheld XRF instruments, etc, the parameters used in determining the analysis including instrument make and model, reading times, calibrations factors applied and their derivation, etc.</li> <li>• Nature of quality control procedures adopted (eg standards, blanks, duplicates, external laboratory checks) and whether acceptable levels of accuracy (ie lack of bias) and precision have been established.</li> </ul>	<ul style="list-style-type: none"> <li>• Laboratory: SGS Australia Pty Ltd, Kalgoorlie WA (17 Stockyard Way).</li> <li>• Method: PhotonAssay™ PAAU02, two-cycle analysis on pulverised material.</li> <li>• Charge weight: 500g Detection limit: 0.03 ppm Au – 350 ppm Au (over-range PAAU02H, 100 – 3500 ppm Au).</li> <li>• Preparation: drying, crushing (90 % &lt; 3.35 mm) and pulverising (85 % &lt; 75 µm) prior to jar fill.</li> <li>• Precision may be reduced in samples with elevated U, Th or Ba.</li> <li>• No umpire analyses to date.</li> </ul>

Criteria	JORC Code explanation	Commentary
Verification of sampling and assaying	<ul style="list-style-type: none"> <li>The verification of significant intersections by either independent or alternative company personnel.</li> <li>The use of twinned holes.</li> <li>Documentation of primary data, data entry procedures, data verification, data storage (physical and electronic) protocols.</li> <li>Discuss any adjustment to assay data.</li> </ul>	<ul style="list-style-type: none"> <li>All assays reviewed and verified internally by TG Metals geological personnel prior to import into the master database.</li> <li>No twinned holes were drilled. However holes were drilled in proximity to historical drillholes for comparative and additional data.</li> </ul>
Location of data points	<ul style="list-style-type: none"> <li>Accuracy and quality of surveys used to locate drill holes (collar and down-hole surveys), trenches, mine workings and other locations used in Mineral Resource estimation.</li> <li>Specification of the grid system used.</li> <li>Quality and adequacy of topographic control.</li> </ul>	<ul style="list-style-type: none"> <li>Coordinate system: MGA94 Zone 50.</li> <li>Collar survey: GPS (+/- 3m accuracy). DGPS at conclusion of the program</li> <li>Downhole survey: CHAMPS north-seeking gyro (Continuous mode) – manufactured by Downhole Surveys Pty Ltd</li> <li>Topography: LiDAR surface model.</li> </ul>
Data spacing and distribution	<ul style="list-style-type: none"> <li>Data spacing for reporting of Exploration Results.</li> <li>Whether the data spacing and distribution is sufficient to establish the degree of geological and grade continuity appropriate for the Mineral Resource and Ore Reserve estimation procedure(s) and classifications applied.</li> <li>Whether sample compositing has been applied.</li> </ul>	<ul style="list-style-type: none"> <li>Spacing considered appropriate for the resource infill drilling campaign.</li> <li>The drilling data will be used to update the current reported MRE (Table A of the report)</li> <li>Assays reported on 1 m intervals; no compositing applied.</li> </ul>
Orientation of data in relation to geological structure	<ul style="list-style-type: none"> <li>Whether the orientation of sampling achieves unbiased sampling of possible structures and the extent to which this is known, considering the deposit type.</li> <li>If the relationship between the drilling orientation and the orientation of key mineralised structures is considered to have introduced a sampling bias, this should be assessed and reported if material.</li> </ul>	<ul style="list-style-type: none"> <li>Mineralisation is interpreted as shear- and vein-hosted along local contacts; drilling orientations are appropriate for testing mineralised zones and introduce no material bias at this scale.</li> </ul>
Sample security	<ul style="list-style-type: none"> <li>The measures taken to ensure sample security.</li> </ul>	<ul style="list-style-type: none"> <li>Samples were bagged and sealed in calico bags inside polyweave sacks, cable-tied and labelled at the rig.</li> <li>Chain of custody was maintained by TG Metals personnel, who personally transported samples directly from site to SGS Kalgoorlie Laboratory for registration and analysis.</li> </ul>
Audits or reviews	<ul style="list-style-type: none"> <li>The results of any audits or reviews of sampling techniques and data.</li> </ul>	<ul style="list-style-type: none"> <li>No external audits specific to this program.</li> <li>Internal QAQC checks identified no material issues.</li> </ul>

## Section 2 Reporting of Exploration Results

(Criteria listed in the preceding section also apply to this section.)

Criteria	JORC Code explanation	Commentary
Mineral tenement and land tenure status	<ul style="list-style-type: none"> <li>Type, reference name/number, location and ownership including agreements or material issues with third parties such as joint ventures, partnerships, overriding royalties, native title interests, historical sites, wilderness or national park and environmental settings.</li> <li>The security of the tenure held at the time of reporting along with any known impediments to obtaining a licence to operate in the area.</li> </ul>	<ul style="list-style-type: none"> <li>Dieman and Laterite Pits are in Mining Lease <b>77/477</b>. The tenement is currently held by Montague Resources Pty Ltd (80%) and Barto Gold Mining Pty Ltd (20%). <b>Ownership:</b> TG Metals has acquired 80% ownership of the Mining lease from Montague Resources Australia Pty Ltd, pending title transfer.</li> <li>The tenement is in good standing and unaffected by heritage or environmental encumbrances.</li> </ul>
Exploration done by other parties	<ul style="list-style-type: none"> <li>Acknowledgment and appraisal of exploration by other parties.</li> </ul>	<ul style="list-style-type: none"> <li>Dieman and Laterite Pit were previously mined and drilled by earlier operators as part of historic gold extraction.</li> <li>Historic data have been reviewed where available.</li> </ul>
Geology	<ul style="list-style-type: none"> <li>Deposit type, geological setting and style of mineralisation.</li> </ul>	<ul style="list-style-type: none"> <li>Orogenic, shear- and vein-hosted gold mineralisation occurs within the Forrestania greenstone belt along the sediment–mafic contact, intruded by a pegmatite dyke. Host rocks are amphibolite-facies metasediments and mafic volcanic units showing local quartz veining and minor schistose alteration. Gold mineralisation is structurally controlled and consistent with regional orogenic systems of the Western Australian Yilgarn Craton.</li> </ul>
Drill hole Information	<ul style="list-style-type: none"> <li>A summary of all information material to the understanding of the exploration results including a tabulation of the following information for all Material drill holes: <ul style="list-style-type: none"> <li>easting and northing of the drill hole collar</li> <li>elevation or RL (Reduced Level – elevation above sea level in metres) of the drill hole collar</li> <li>dip and azimuth of the hole</li> <li>down hole length and interception depth</li> <li>hole length.</li> </ul> </li> <li>If the exclusion of this information is justified on the basis that the information is not Material and this exclusion does not detract from the understanding of the report, the Competent Person should clearly explain why this is the case.</li> </ul>	<ul style="list-style-type: none"> <li>Collar coordinates, orientation and hole depths for the infill drilling have been provided in the Table 1 of the report.</li> <li>No holes were abandoned.</li> </ul>

Criteria	JORC Code explanation	Commentary
Data aggregation methods	<ul style="list-style-type: none"> <li><i>In reporting Exploration Results, weighting averaging techniques, maximum and/or minimum grade truncations (eg cutting of high grades) and cut-off grades are usually Material and should be stated.</i></li> <li><i>Where aggregate intercepts incorporate short lengths of high grade results and longer lengths of low grade results, the procedure used for such aggregation should be stated and some typical examples of such aggregations should be shown in detail.</i></li> <li><i>The assumptions used for any reporting of metal equivalent values should be clearly stated.</i></li> </ul>	<ul style="list-style-type: none"> <li>Significant intercepts reported on length-weighted 1 m assays using the following criteria: <ul style="list-style-type: none"> <li>Lower cut-off: 0.3g/t Au</li> <li>Minimum downhole width: 1 m</li> <li>Maximum internal dilution: 2 m</li> <li>No top-cut applied</li> <li>No metal equivalents used.</li> </ul> </li> </ul>
Relationship between mineralisation widths and intercept lengths	<ul style="list-style-type: none"> <li><i>These relationships are particularly important in the reporting of Exploration Results.</i></li> <li><i>If the geometry of the mineralisation with respect to the drill hole angle is known, its nature should be reported.</i></li> <li><i>If it is not known and only the down hole lengths are reported, there should be a clear statement to this effect (eg 'down hole length, true width not known').</i></li> </ul>	<ul style="list-style-type: none"> <li>Intercepts represent downhole lengths</li> <li>True widths not determined.</li> <li>Orientation bias is expected to be minor.</li> </ul>
Diagrams	<ul style="list-style-type: none"> <li><i>Appropriate maps and sections (with scales) and tabulations of intercepts should be included for any significant discovery being reported These should include, but not be limited to a plan view of drill hole collar locations and appropriate sectional views.</i></li> </ul>	<ul style="list-style-type: none"> <li>Maps, diagrams and sections have been included in the report.</li> </ul>
Balanced reporting	<ul style="list-style-type: none"> <li><i>Where comprehensive reporting of all Exploration Results is not practicable, representative reporting of both low and high grades and/or widths should be practiced to avoid misleading reporting of Exploration Results.</i></li> </ul>	<ul style="list-style-type: none"> <li>All holes from this program have been included in Table 2 to ensure balanced reporting.</li> </ul>
Other substantive exploration data	<ul style="list-style-type: none"> <li><i>Other exploration data, if meaningful and material, should be reported including (but not limited to): geological observations; geophysical survey results; geochemical survey results; bulk samples – size and method of treatment; metallurgical test results; bulk density, groundwater, geotechnical and rock characteristics; potential deleterious or contaminating substances.</i></li> </ul>	<ul style="list-style-type: none"> <li>Drilling was conducted to expand the current Van Uden MRE via infill and down dip directions.</li> <li>No density or metallurgical data were collected.</li> </ul>
Further work	<ul style="list-style-type: none"> <li><i>The nature and scale of planned further work (eg tests for lateral extensions or depth extensions or large-scale step-out drilling).</i></li> <li><i>Diagrams clearly highlighting the areas of possible extensions, including the main geological interpretations and future drilling areas, provided this information is not commercially sensitive.</i></li> </ul>	<ul style="list-style-type: none"> <li>Refer to 'Follow-up Work' in the report, plus DGPS surveying of all drillhole collars opportunistically and at conclusion of the drill program.</li> <li>See Figure 3 in the body text for future drilling areas and targets.</li> </ul>