

ersonal use only



Investor Presentation

October 2025

SQX Resources Limited

Disclaimer

This presentation has been prepared by SQX Resources Limited (“SQX” or the “Company”) for information purposes only. It does not constitute an offer, invitation, solicitation, or recommendation with respect to the purchase or sale of any securities in the Company, nor does it constitute financial product advice. This presentation should not be relied upon as a substitute for detailed advice or independent expert analysis. Recipients should make their own independent assessment of the information contained herein and obtain independent professional advice before making any investment decision.

This presentation does not constitute an invitation or offer by the Company for the purchase or subscription of shares or other securities and nothing in this presentation should be construed as either an offer to sell or a solicitation of an offer to buy securities in the Company, or recommendation in relation to the purchase or sale of shares or other securities in any jurisdiction. Furthermore, this document does not advertise any such invitation or offer and does not constitute financial product advice or advice relating to investment matters.

The Company and its related bodies corporate, their directors, shareholders, managers, consultants, agents and/or employees (collectively, Information Providers) reserve the right, but are under no obligation, to modify or vary this document at any time. New versions of this document may be released by the Company whereupon such new versions will take immediate and complete precedence.

The Information Providers make no representation or warranty express or implied, as to the accuracy, reliability, reasonableness or completeness of the contents of this presentation. They expressly disclaim any and all liability (whether arising from negligence or otherwise) for, or based on, or relating to any such information contained in this presentation, or for any errors in or omissions from this presentation or for any written or oral communications transmitted to the Recipient in connection with this presentation, except for any liability which cannot be excluded as a matter of law. In the latter case, if the Recipient relies on this presentation, it represents that it will not seek to enforce any judgment given under such law against an Information Provider. Any person relying on information herein does so at their own risk and agrees, to indemnify and hold harmless the Company and its officers, employees, agents and contractors and all Information Providers (for whom the Company accepts this benefit as trustee and agent) from and against all claims, damages, liability, costs and expenses in relation to such reliance and releases and discharges each of the

foregoing from and in relation to such claims, damages, liability, costs and expenses.

This presentation may include certain statements, estimates or projections with respect to the anticipated future performance of the Company and its operations. Such statements, estimates or projections are based on assumptions about future events and management actions that may not necessarily take place and are subject to significant uncertainties, many of which are outside the Company’s control. No effort will be made to update or revise any information or any of the forward-looking statements in this presentation or any changes in events, conditions, or circumstances on which any such forward-looking statement is based. No representation is made as to the accuracy of such statements, estimates or projections. Each Recipient should make its own enquiries regarding the Company’s future operations and the impact that different future outcomes may have on the Company and its operations, and should not rely on the statements, estimates or projections set out in this presentation.

The Company is listed on the Australian Securities Exchange and is bound by the ASX Listing Rules, including continuous disclosure obligations under Listing Rule 3.1. All material information relating to the Company’s activities, including exploration results, Mineral Resources, and material agreements, is disclosed to the ASX and available on the Company’s website at www.sqxresources.com.au and at www.asx.com.au.

Information in this presentation that relates to exploration results is extracted from previous ASX announcements made by SQX Resources Limited (ASX: SQX).

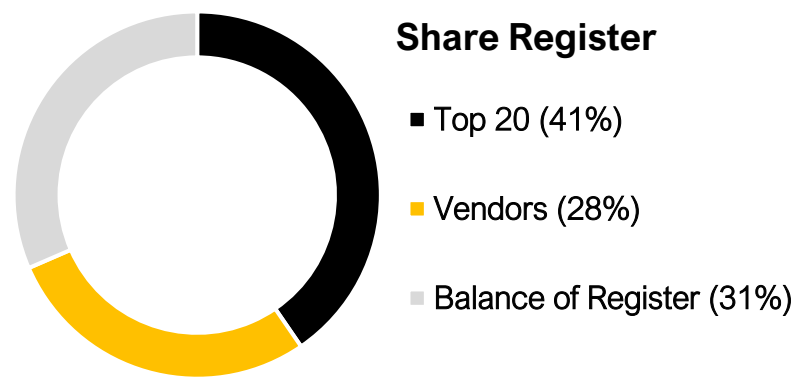
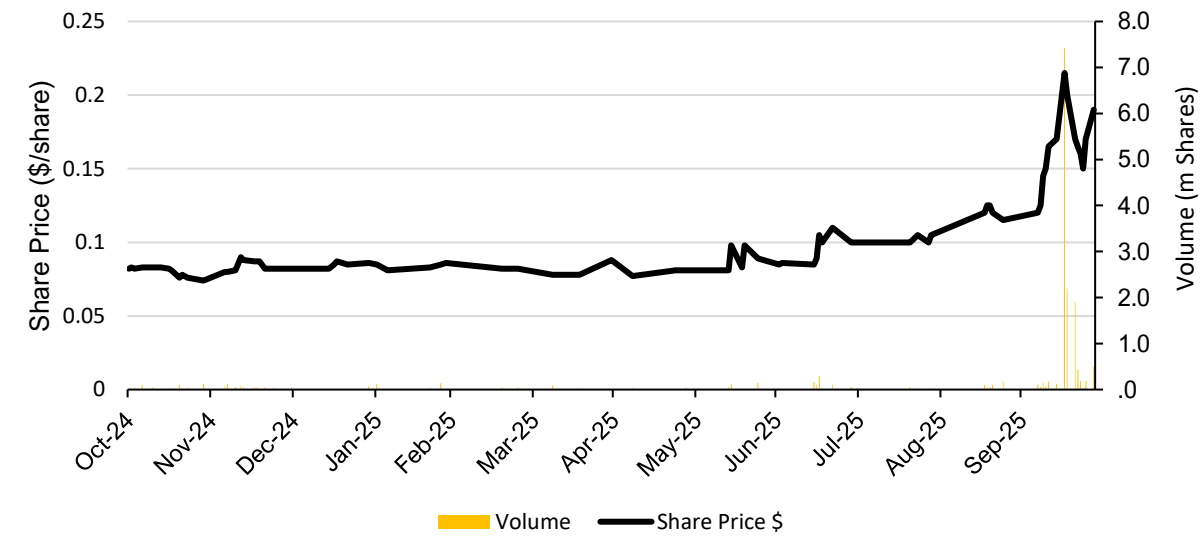
The Company confirms that it is not aware of any new information or data that materially affects the information included in those announcements, all material assumptions and technical parameters underpinning the exploration results and estimates in those announcements continue to apply and have not materially changed and the form and context in which the Competent Person’s findings are presented have not been materially modified from the original market announcements.

The relevant ASX announcement is “SQX Secures High-Grade USA Gold & Silver Projects” – 16 October 2025.

Corporate Snapshot following acquisition of 80% AM6¹

Key Metric (AUD)
\$0.19 Share Price
\$13.5M Market Capitalisation
69% Top 20 & Vendors
71.25M Shares on issue
\$3.2M Cash
ASX:SQX

Share Price Performance



Capital structure

Current shares on issue	39,062,500
Shares issued at AGM (28 November 2025)	32,187,500
Shares on issue (post-completion)	71,250,000
Market cap (post-completion) at \$0.19	\$13,537,500
Cash (post-completion)	~\$3,200,000
Pro forma enterprise value (undiluted)	\$10,337,500
Options on issue (post-completion)	41,293,811
Performance rights (post-completion)	34,395,189

Board and management

Patric Glovac Executive Chairman
Julian Stephens Executive Director (to be appointed post-completion)
David Sanders Non-executive Director
Brent Van Staden Non-executive Director
Quinton Meyers Company Secretary



1. Completion of the acquisition of AM6 Pty Ltd remains subject to the Company completing due diligence to its satisfaction and obtaining shareholder approval at the Annual General Meeting scheduled for 28 November 2025.

SQX Resources Limited



High-grade precious metal portfolio in the USA

Focused on advancing the bonanza-grade *Williams Au-Ag Project* in Montana and the *Red Bird Au Project* in Arizona, which are both wholly owned by AM6 Pty Ltd. The acquisition of 80% of AM6 is subject to shareholder approval at the Company's Annual General Meeting scheduled for 28 November 2025 and due diligence by being performed by SQX.



Exposure to significant near-term exploration catalysts

Drilling at *Red Bird* scheduled for December 2025 with follow-up programs planned at *Williams* including mapping, sampling and geophysics and drilling through 2026.



Two advanced brownfields projects with existing underground development

Over 445m of historic drives and stopes at *Williams*, plus multiple levels of underground development and historical channel sampling at *Red Bird*, confirming continuity of high-grade mineralisation.



Proven technical and corporate team

Board and management team with a strong track record in identifying, financing, and advancing high-grade gold projects globally.



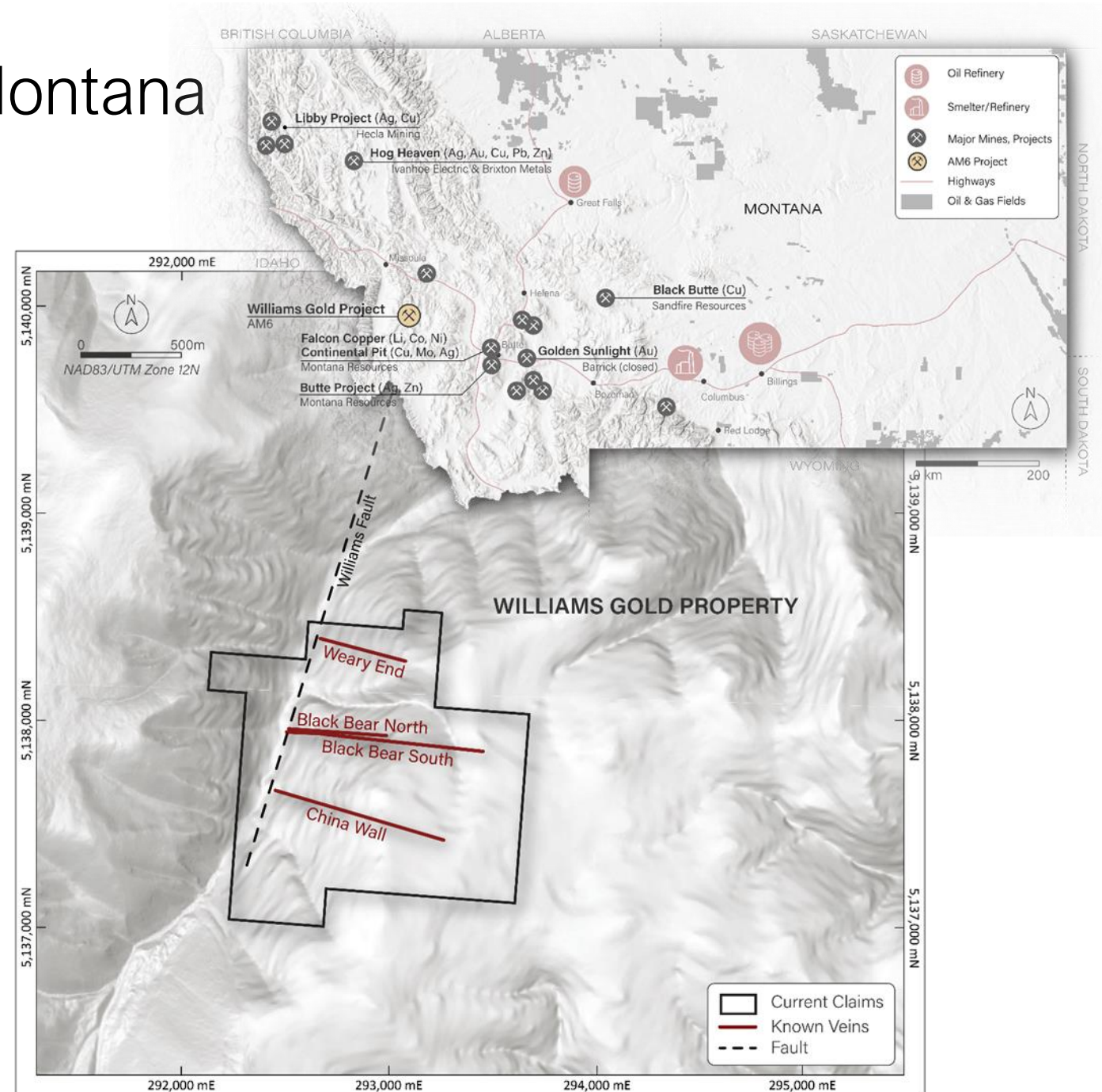
Clear pathway to value creation

Strategy to rapidly build a high-grade gold-silver portfolio through modern exploration, resource definition, and strategic processing partnerships using existing US toll-milling infrastructure.



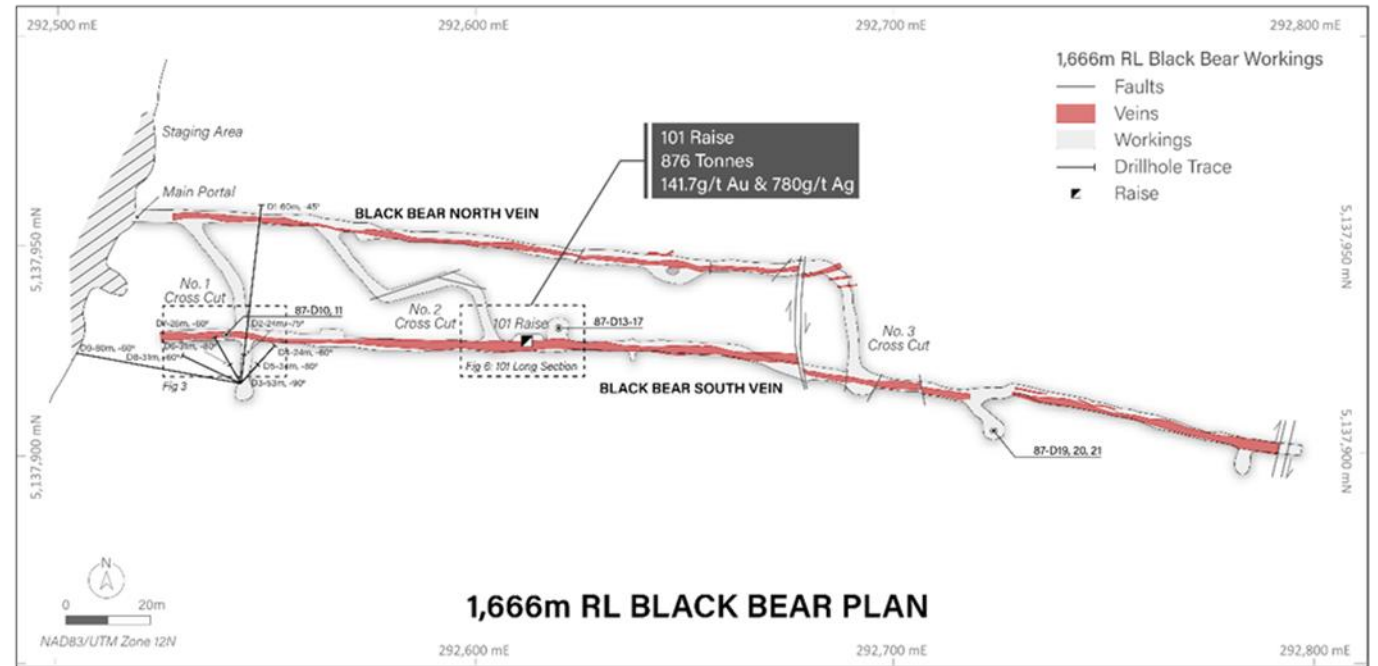
Williams Au-Ag Project - Montana

- ★ Last explored in the late 1980s with over 445m of exploration drives plus additional stopes and raises
- ★ Numerous multi-ounce bonanza grade Au-Ag zones which included 876 tonnes extracted from a stope grading 141.7g/t Au & 780g/t Ag
- ★ Large upside potential - 8 mineralised veins zones identified with significant exploration only conducted on 2 veins to date



Williams Au-Ag

- Project area is significantly underexplored with only two of at least eight mineralised veins (Black Bear South and North) having seen any substantial historical work
- The key Black Bear South Vein has been mapped for over 900m of strike at surface and remains open.
- Numerous bonanza grade Au-Ag shoots identified within the main South vein



Main 1,666m level plan of South & North Black Bear Vein

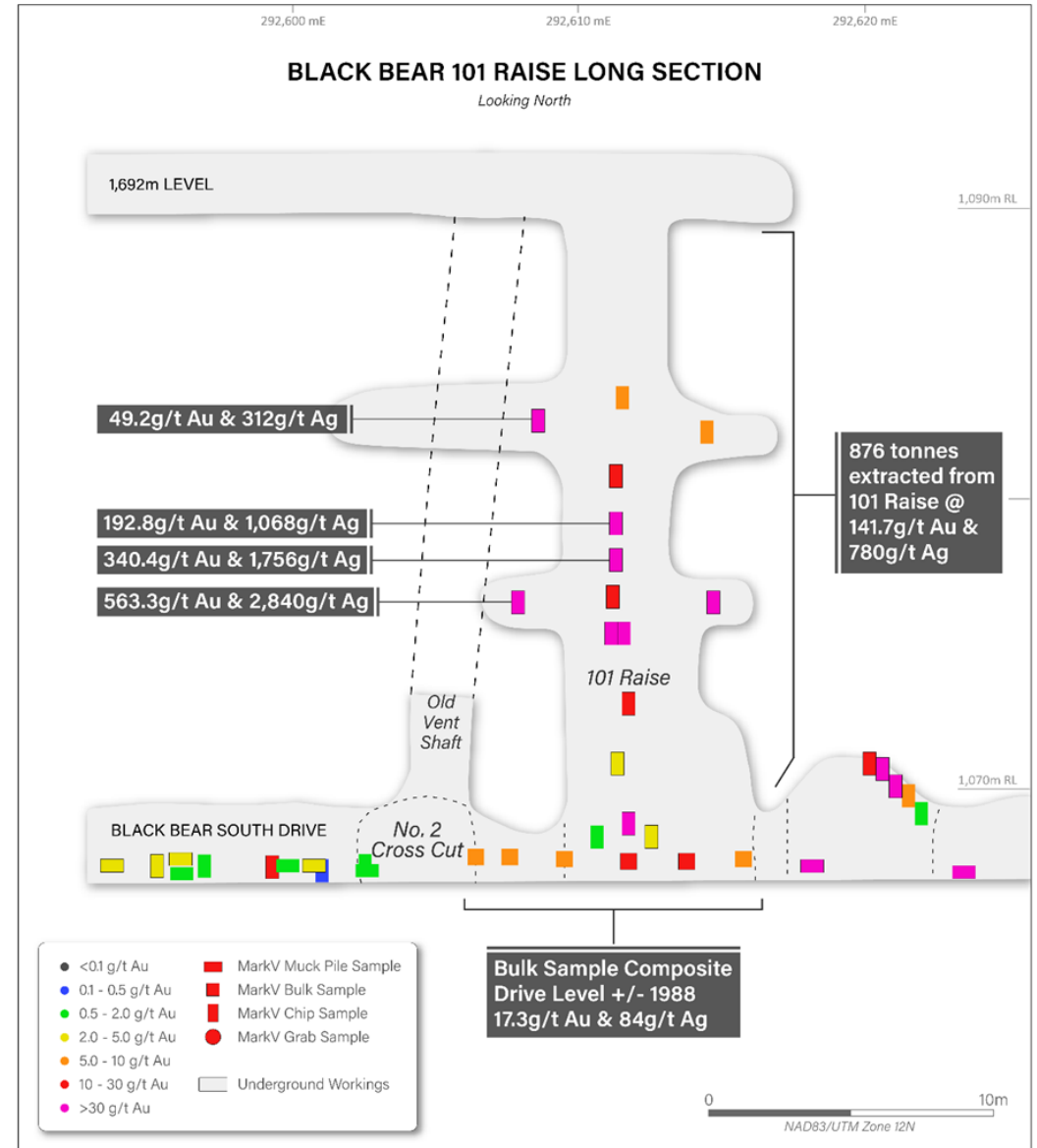
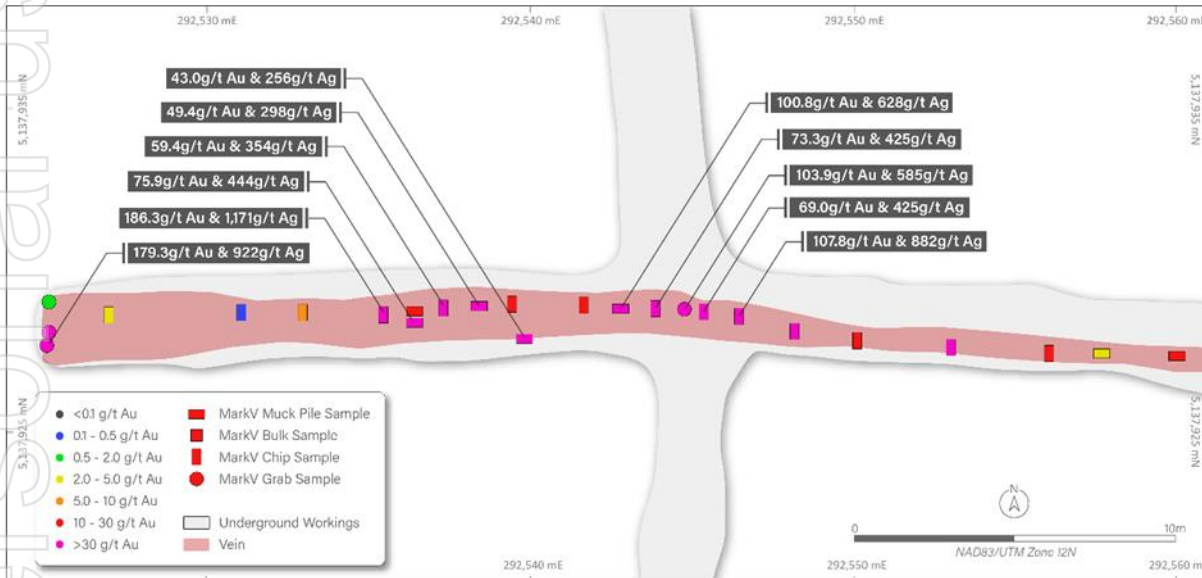
Vein	Strike Length (m)	Width (m)	Gold Grade (g/t)	Silver Grade (g/t)	Notable Base Metals
Black Bear South	>900	1–4	141.7g/t pilot stope 739.1g/t highest single assay (pilot stope)	780g/t pilot stope 3,562g/t highest single assay (pilot stope)	Up to 3.6% Pb, 1.7% Zn and 0.94% Cu
Black Bear North	>400	1–3	45.3g/t highest single sample assay	99g/t highest single sample assay	Mo 1.73% highest single sample assay
China Wall	>260	2–4	Mineralised	Mineralised	Not reported
Weary End	>400m	Not reported	Not reported	Not reported	Not reported
4+ unnamed veins	Unknown	Unknown	Unknown	Unknown	Unknown

Channel/Sample ID	Type	Area	Au g/t	Ag g/t
101MPComp09	16kg Muck	101 Raise	563.3	2,840
101MPComp04	16kg Muck	101 Raise	340.4	1,756
101MPComp01	16kg Muck	101 Raise	292.8	1,874
O.S.3	In Situ Chip	Sth Vein	219.4	1,049
101MPComp05	16kg Muck	101 Raise	191.9	1,068
MVCH019	In Situ Chip	Sth Vein	186.3	1,171
53	Grab	Sth Vein	179.3	922
101MPComp02	16kg Muck	101 Raise	177.5	1,099
MVCH086	In Situ Chip	Sth Vein	107.9	882
756	Grab	Sth Vein	103.9	585
MVMP012	Muck Pile	Sth Vein	100.8	628



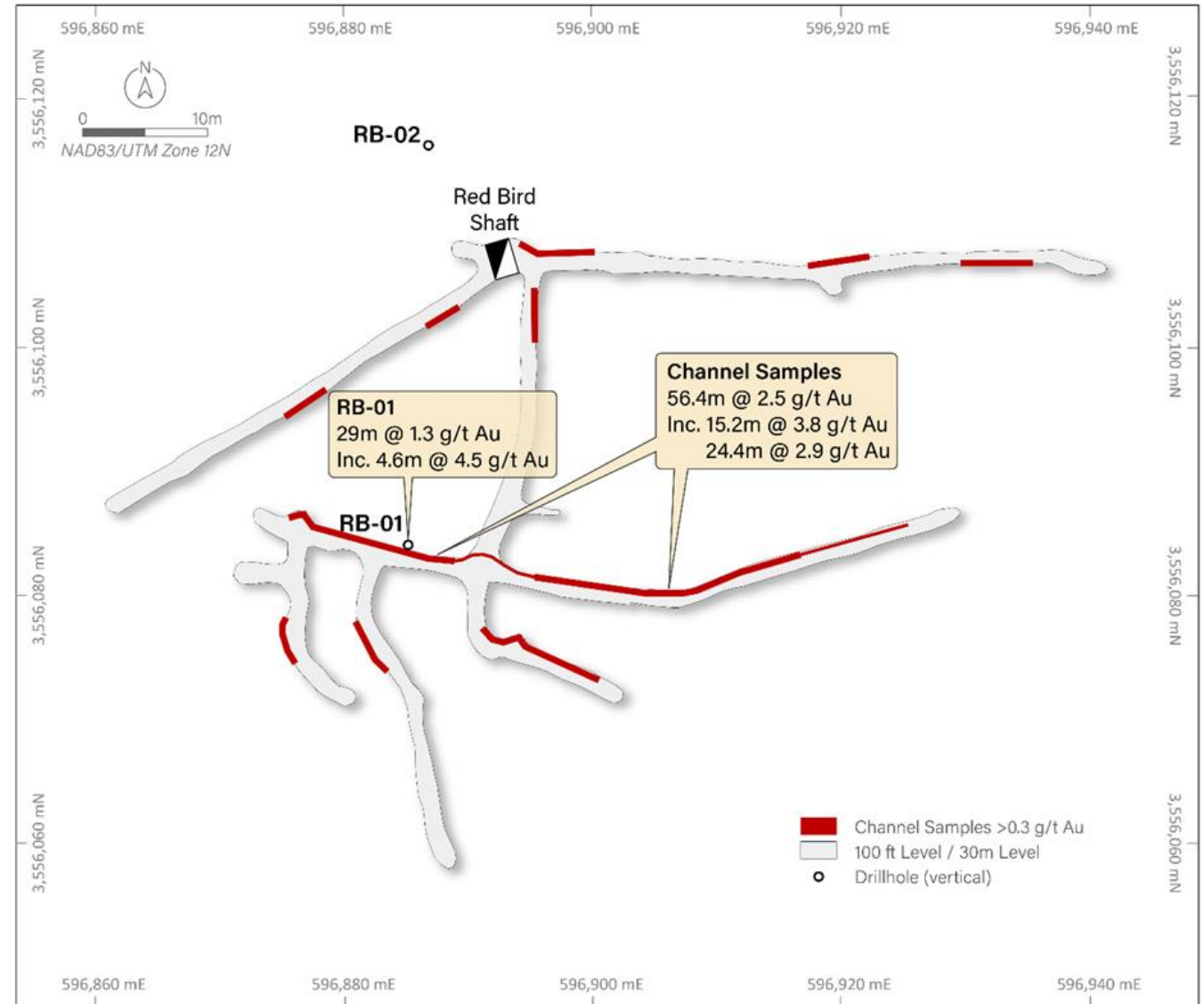
Williams Au-Ag: The Opportunity

- ✦ Develop a forgotten very high-grade gold project in the USA.
- ✦ Simple underground mining proposition.
- ✦ Transport high-grade ore from the project for processing to flotation concentrate by existing nearby toll-mill or elsewhere in western USA (via rail).



Red Bird Au

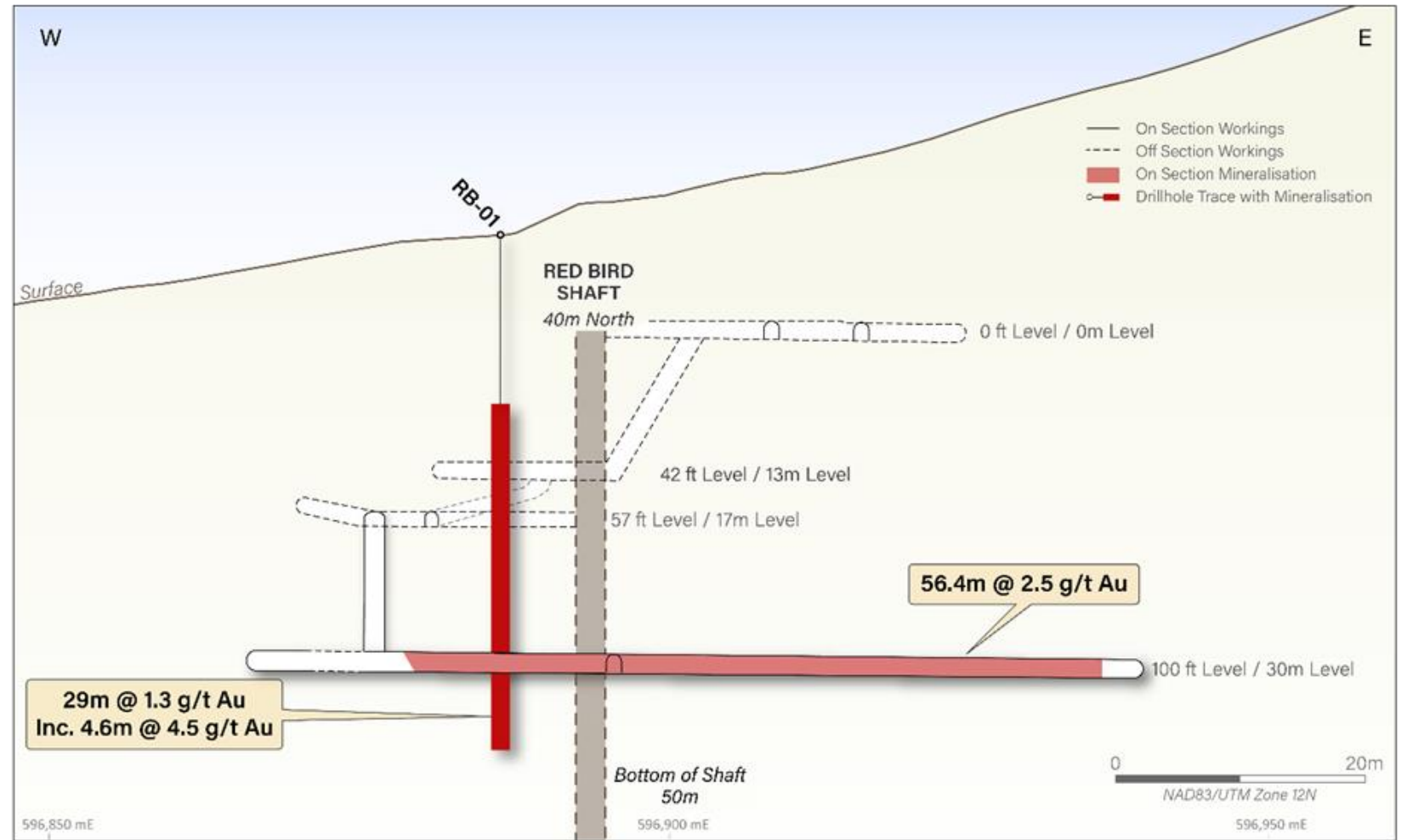
- 48 claims over epithermal vein, breccia & replacement mineralisation target formerly explored by Homestake Mining
- Historical underground continuous chip-channel results include;
 - 0m Level: 19.8m @ 2.3g/t Au
& 10.7m @ 3.3g/t Au
 - 17m Level: 10.7m @ 8.5 g/t Au
inc. 4.6m @ 17.3g/t Au
 - 30m Level : 56.4m @ 2.5g/t Au
inc. 15.0m @ 3.8g/t Au
- SQX to initially target broader and larger tonnage potential for open-pittable mineralisation



Red Bird Mine 30m level plan.

Red Bird Au

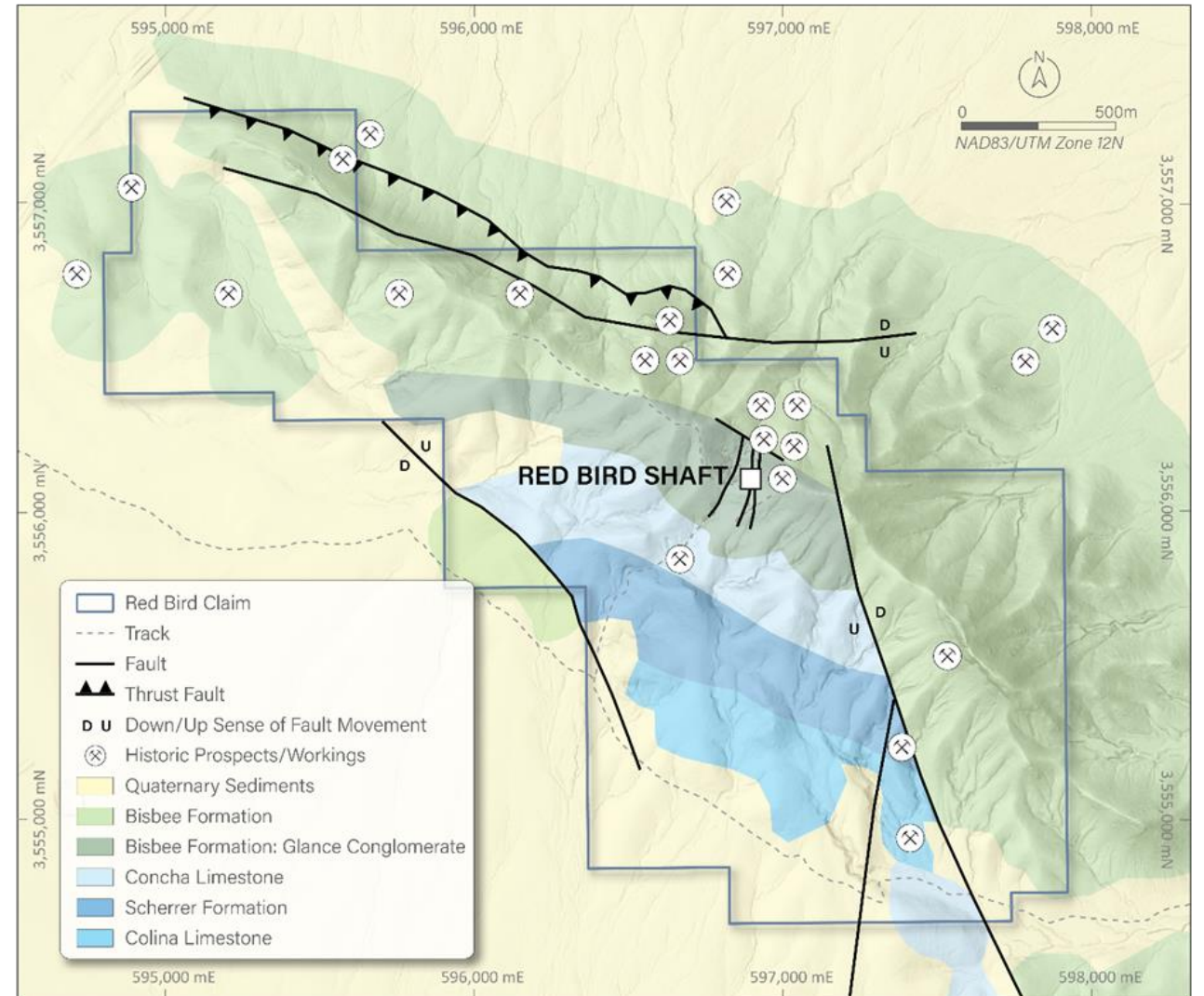
- ★ SQX to target broader, larger tonnage potential for open-pittable mineralisation
- ★ Maiden 2,500m RC drill program scheduled for December 2025



Red Bird Mine long section highlighting main 30m level

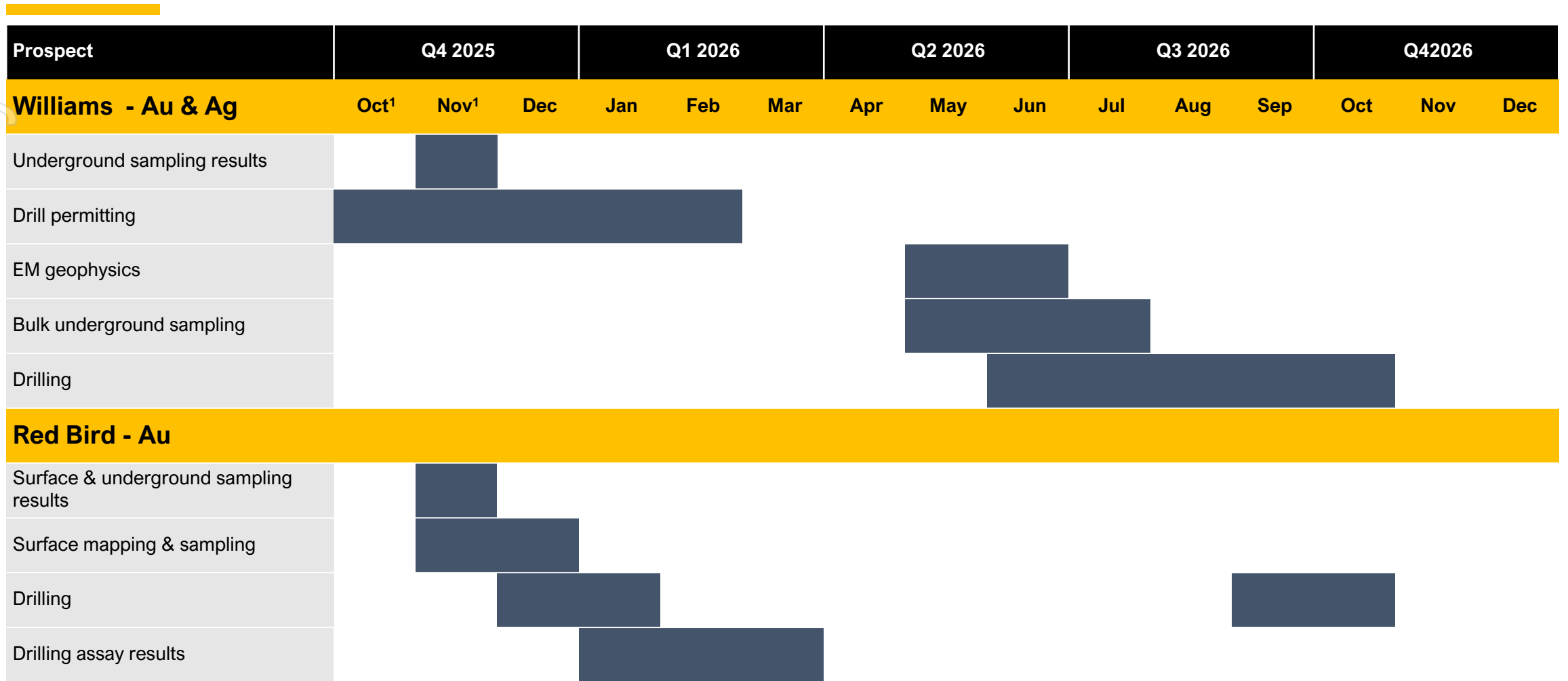
Red Bird Au – The Opportunity

- ✦ Target a JORC MRE in and around the current workings.
- ✦ Extend mineralisation at depth and along strike with geophysics and drilling.
- ✦ Discover new mineralised zones – many regional prospects are known that have seen very little work.



Red Bird geology

Work programs



1. Exploration activities conducted prior to completion of the Company's acquisition of 80% of AM6 Pty Ltd are being undertaken by AM6 Pty Ltd.

ersonal use only

Proposed Exploration Plan

Williams Au-Ag October 2025 – May 2026

Detailed geological mapping and high-resolution surface geophysics to delineate priority targets for 2026 drilling.

- ✦ Geological Mapping and Sampling - Underground and surface mapping, systematic channel sampling, and rock-chip sampling to define alteration and mineralisation trends.
- ✦ Geophysics - Surface electromagnetic (**EM**) program to map conductive zones associated with potential Au-Ag in sulphide-bearing horizons.
- ✦ Targeting and Permitting - Engagement of specialist consultants to refine target models and complete necessary drill permitting and logistical planning ahead of the 2026 field season.

Proposed Exploration Plan

Red Bird October 2025 – May 2026: Fieldwork and Drilling

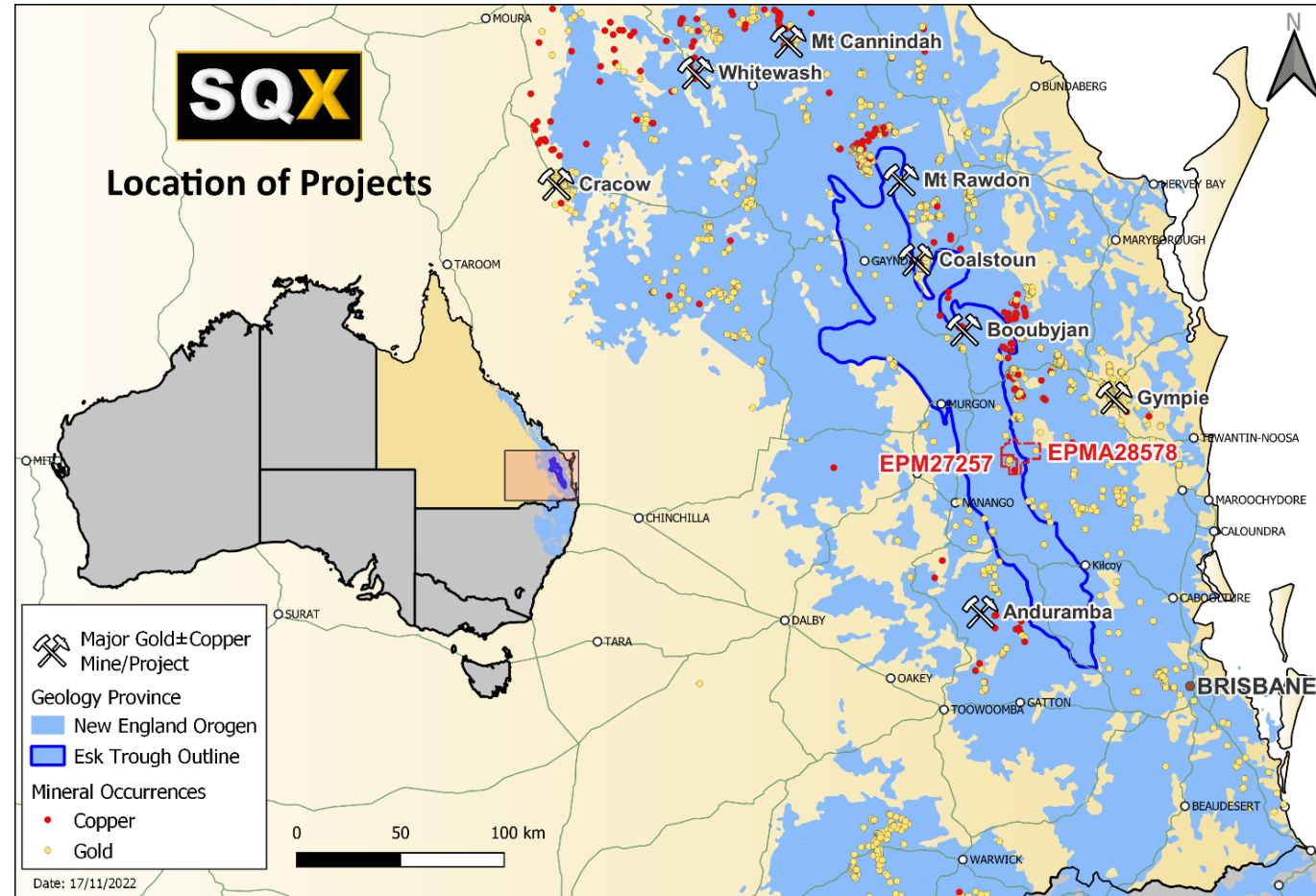
Work at Red Bird will build on historical data through targeted surface and underground mapping, followed by an initial drill program in late 2025;

- ✦ Geological Mapping and Sampling - Underground and surface channel sampling and geological mapping to characterise mineralised structures.
- ✦ Geophysics - Induced Polarisation (IP) survey to define subsurface chargeability anomalies coincident with known mineralised zones.
- ✦ Drilling – Initial reverse circulation (RC) program planned for December 2025, targeting geophysical and structural anomalies identified from the IP data.
- ✦ Consultants and QA/QC – Engagement of geological consultants to oversee field execution, sampling QA/QC and data integration

EPM 27257 - overview

Strong prospectivity in attractive location

- ★ 1 (+1) tenements, 2 prospects, one wholly-owned subsidiary
- ★ Prospective for porphyry gold/copper
- ★ Within the Esk Basin, a structure in the New England Fold Belt
- ★ Situated in an underexplored area containing
 - Historical mines (Gympie, Mt Morgan)
 - Current mines (Mt Rawdon, Cracow)
 - Development assets (Mt Cannindah, Coalstoun Lakes)
- ★ Located within 130km of Brisbane, close to major highway and infrastructure
- ★ Weather is conducive to exploration activities through most of the year
- ★ Has been subject to limited recent exploration
- ★ Two prospects, Scrub Paddock and Ollenburgs, both feature known mineralization including historical mine workings
- ★ Adjoining sub-blocks to NE have been included in application for additional EPM (EPMA 28578)



ersonal use only



SQX RESOURCES LIMITED

Registered Office

349 Hay Street, Subiaco WA 6008

General Enquiries

info@sqxresources.com