

QUARTERLY ACTIVITIES REPORT

Rapid Critical Metals Limited (ASX: RCM) ('Rapid', 'RCM' or the 'Company') is pleased to provide a summary of activities for the Quarter ended 30 September 2025.



Highlights:

Corporate:

- Execution of a binding Share Purchase Agreement to acquire the Webbs Consol Silver Project from ASX-listed Lode Resources Limited;
- Announcement of a \$14M two-tranche placement to fund the Webbs Consol acquisition corner stoned by renowned global investor Eric Sprott, Jupiter Asset Management and Tribeca Investment Partners who collectively received allocations of \$10.5M;
- Completion of the acquisition of Silver Metals Group's two wholly owned subsidiaries, Conrad Resources and Webbs Resources, comprising the Conrad and Webbs Silver Projects in the New England Fold Belt in NSW;
- In conjunction with completion of the SMG acquisition, the Company announced the appointment of Byron Miles as Managing Director;
- Completion of the \$10.5M capital raising announced in the previous quarter, to fund the SMG acquisition;
- Sale of the Company's US Tin Mountain and Ingersoll Lithium Projects;
- Completion of the consolidation of the issued capital of the Company on a 1 share for every 12 shares held basis; and
- Subsequent to the end of the quarter, the Company announced the proposed appointment of John Poynton as the new Chairman.

New South Wales:

- In addition to the announcement of the acquisition of the Webbs Consol and the completion of the SMG acquisition, the Company commenced drilling at the Webbs Silver Project in northern NSW; and
- The Company was granted EL9799 which expands the NSW landholding by 26 X, consolidating a strategic position across a highly prospective silver corridor between the Webbs Silver Project, acquired from SMG, and the Webbs Consol, in the process of being acquired from Lode Resources.

Canada:

- Field crews were mobilised and camp construction was completed at Prophet River;
- Geophysical survey completed (IP + MT) to map structures down to 1,500m; Sampling and confirmatory work was completed, supporting 2026 drilling design; and
- Positioned to unlock gallium-germanium potential in a Tier-1 jurisdiction

United States:

- Rapid announced that the Company had entered into a Sale Purchase Agreement with a subsidiary of ASX-listed Iris Metals Limited (ASX: IR1), for the sale of the Company's Tin Mountain property in South Dakota, USA, with Rapid to receive consideration by way of IR1 shares, cash and a royalty from future production from the area. The sale was completed in the quarter.



- During the quarter, the Company also announced the sale of the Ingersoll Project to Iris Metals with the terms outlined herein; as well as Federal claims being offered to Iris and
- The Company has continued to keep the properties in good standing during the quarter.

CORPORATE:

- Acquisition of the Webbs Consol Silver Project:

On 1 September, Rapid was pleased to announce it has entered into a binding agreement with ASX-listed Lode Resources Limited (ASX: LDR) (**Lode** or **Lode Resources**) to acquire 100% of the Webbs Consol Silver Project (**Webbs Consol**) in northeast New South Wales, comprising EL 8933 and EL 9454.

Under the terms of the Agreement, total consideration is payable to Lode Resources as follows:

- Cash: A\$3.0 million at completion, with a further A\$0.75 million payable 12 months post-completion; and
- Shares: 115,000,000 new Rapid shares to Lode, voluntarily escrowed for 12 months.
- A 2% NSR royalty.

A Share Purchase Agreement was executed with Lode as announced to the ASX on 29 September 2025 and completion of the transaction remains subject to the approval of Rapid shareholders at the Extraordinary General Meeting scheduled for Monday 24 November, 2025 (**EGM**).

The strategic rationale for the acquisition of the Webbs Consol is:

- Builds critical mass: Adds 32Moz AgEq at high grades (636g/t AgEq) to RCM's existing Webbs and Conrad existing high grade deposits of 35Moz¹.
- Secures a district-scale silver corridor: Consolidates contiguous tenure across a high-grade silver belt in the New England Fold Belt.
- Unlocks new discovery potential: Adjoining tenure increases the likelihood of new discoveries between the two high grade silver deposits.
- Enables integrated development: Consolidated ownership of three nearby, high-grade deposits supports unified mine planning, centralised processing options, and potential operating synergies.
- Positions RCM for growth: Proximity to existing infrastructure and strong silver market fundamentals provide a favourable backdrop for accelerated development.

Very high-grade results from Lode drilling include²:

- **17.3m @ 1,734 g/t AgEq from 281m (WCS065);**
- **149.2m @ 455 g/t AgEq from 98.0m (WCS052); and**
- **24.5m @ 1,450 g/t AgEq from 144m (WCS047).**

¹ Note: The silver equivalent grades are based on assumptions:

$\text{AgEq(g/t)} = \text{Ag(g/t)} + 61 * \text{Zn(\%)} + 33 * \text{Pb(\%)} + 107 * \text{Cu(\%)} + 88 * \text{Au(g/t)}$ calculated from August 2022 spot metal prices of US\$18.5/oz silver, US\$3600/t zinc, US\$2000/t lead, US\$8100/t copper, US\$1740/oz gold and metallurgical recoveries of 97.3% silver, 98.7%, zinc, 94.7% lead, 76.3% copper and 90.8% gold, taken from preliminary flotation tests conducted in 2021. It is RCM's opinion that all the elements included in the metal equivalents calculation have a reasonable potential to be recovered and sold.

² For full exploration results including relevant JORC table information and Competent Persons Statement, refer to the Company's ASX announcement of 15 September, 2025.

Commenting on the acquisition at the time of announcing the agreement, Byron Miles, Managing Director of Rapid, said:

“This acquisition represents a pivotal step in our strategy to build a leading silver-focused growth platform in New South Wales adding the Webbs Consol to Rapid’s 100%-owned Webbs and Conrad deposits, with significant potential for further growth.

The transaction not only secures a contiguous silver corridor with outstanding geological prospectivity, but also opens up exciting potential for new discoveries in an area that has seen limited systematic drilling. The exceptional high-grade hits already achieved at Webbs Consol underscore the quality of the mineralisation and the upside ahead.

With a strengthened portfolio and a team focused on delivery, we are well placed to accelerate exploration and development activities to create long-term value for our shareholders.”

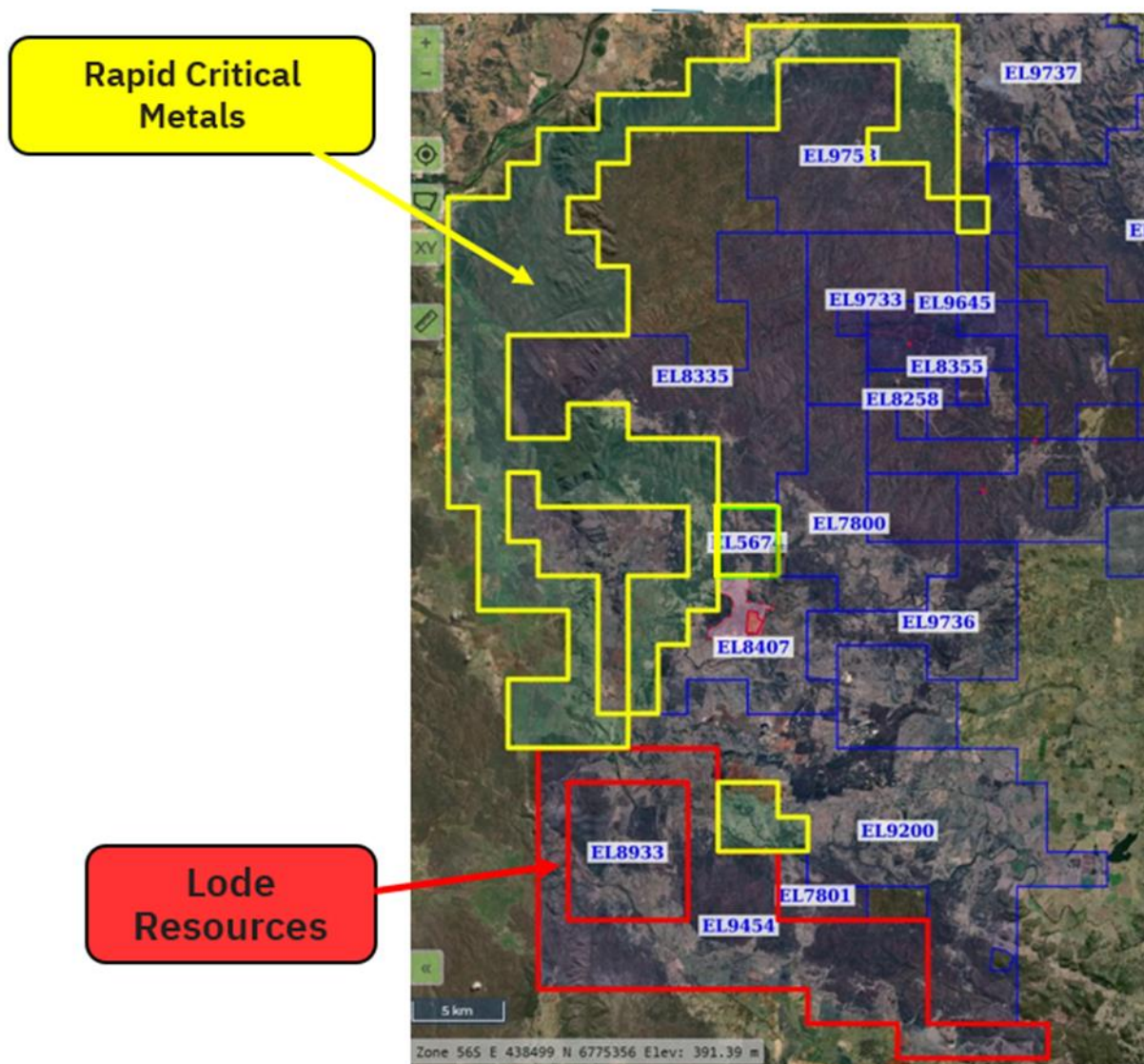


Figure 1: Location map showing Webbs Silver Project (In Yellow), the Webbs Console Silver Project (in red), to be acquired.

➤ \$14M Two-Tranche Placement:

On 17 September, 2025, Rapid was pleased to announce that the Company had received firm commitments from institutional, sophisticated and professional investors for the placement of 400.0 million New Shares at an issue price of A\$0.035 per New Share to raise gross proceeds of A\$14m. The Placement comprises two tranches with the first tranche of \$5.6m already completed via the issue of approximately 159.7 million New Shares utilising the Company's available placement capacity under Listing Rules (LR) 7.1 and 7.1A.

The second tranche, to raise approximately A\$8.4m, is subject to shareholder approval at the EGM.

The Placement attracted cornerstone support from 3 new high quality institutional and professional investors including renowned global investor Eric Sprott, Jupiter Asset Management and Tribeca Investment Partners, who collectively received allocations of \$10.5m. The Placement was also strongly supported by existing institutional shareholders. Directors are also participating for A\$200k, subject to shareholder approval at the EGM.

➤ Completion of the Acquisition of the Webbs and Conrads Silver Projects:

As originally announced to the ASX on 22 May, 2025, the Company entered into a SPA to acquire all of the shares in two subsidiaries of SMG, being Conrad Resources Pty Ltd and Webbs Resources Pty Ltd, for a total consideration of A\$6.50 million in cash and shares. The Transaction was completed on 24 July, 2025.

Full details of the acquisition and the background on the silver projects are contained within the Company's announcement of 22 May, 2025 which includes exploration results, a Competent Persons Statement and relevant JORC table information.

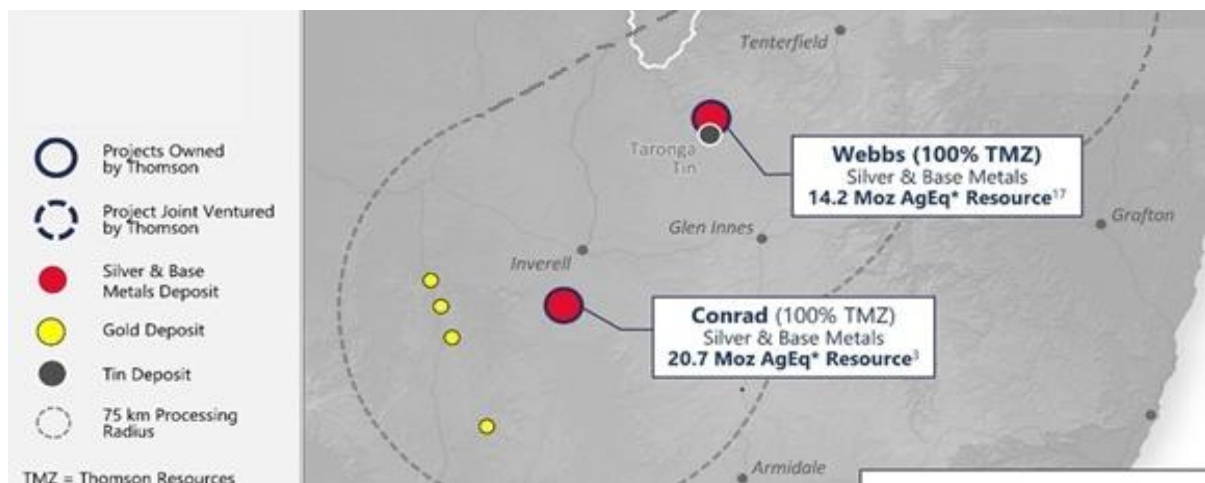


Figure 2: Location of the NSW Webbs and Conrads Silver Projects.

➤ Appointment of New Managing Director and Proposed Appointment of John Poynton:

At the EGM held on 7 July, 2025, shareholders approved the appointment of Mr Byron Miles as a Director, subject to completion of the acquisition of the NSW silver projects (*refer ASX announcement of 22 May, 2025*). Completion of the acquisition of the Conrad and Webbs Silver Projects in the New England Fold Belt of NSW formally occurred on 24 July, 2025 with

the Board formally appointing Byron as the Company's new Managing Director effective from that date.

Mr. Miles is a financial market professional who brings a wealth of experience to the Company, having worked as a stockbroker and fund manager for over 18 years. He is a specialist in mergers and acquisitions, with transactions across various commodities and geological locations. Mr Miles has a track record of helping companies develop from inception to profitable businesses.

Following Byron's appointment to Managing Director, both Martin Holland and Michael Schlumpberger transitioned to the role of Non-Executive Director, also effective 24 July, 2025.

Commenting on the transition of Managing Director at the time, Rapid's Chairman, Rick Anthon, said:

"The Board would like to thank Martin Holland for executing the transformative strategy of the Company as Managing Director that was required to turn RCM into a well-funded critical metals Company with leading acquisitions in Silver and Gallium + Germanium, across two leading mining jurisdictions."

Subsequent to the end of the quarter on 22 October 2025, the Company was also pleased to announce the proposed appointment of John Poyton as the Company's new Chairman. The appointment of John by the Board, is subject to the approval of his remuneration package at the forthcoming EGM. Following John's appointment as Independent Non-Executive Chair, current Chairman, Rick Anthon, will transition to the role of an Independent Non-Executive Director. In a further change to the Board, Dan Smith tendered his resignation from the Board, effective 22 October, 2025.

➤ Successful \$10.5M Capital Raising and June EGM:

During the quarter, the Company completed the capital raising announced in the June 2025 quarter which was required in order to fund the SMG acquisition. Pursuant to the June 2025 capital raising, the Company raised \$10.5m which was conducted at an issue price of \$0.024 per share. Strong support for this earlier capital raising was also received from existing & new institutional, sophisticated and professional investors. One of the Company's major shareholders who has an appointed board member, Strata Investment holdings (**Strata**), agreed to participate in subscribing for \$500k which is to be voted on at the forthcoming EGM.

Proceeds from this earlier raising, together with existing cash, were used to fund the acquisition of 100% of the Conrad and Webbs Silver Projects in the New England Fold Belt of NSW as well as working capital.

The capital raising was approved by shareholders at the EGM on 7 July, 2025 and completed on 16 July, 2025.

At the EGM on 7 July, 2025, shareholders also approved:

- The issue of the consideration shares for the acquisition of the NSW silver projects;
- The placement shares for tranche 1 comprising \$10.0m of the \$10.5m capital raising with the balance of \$500k to Strata still subject to shareholder approval;
- The appointment of Byron Miles as a director;

- A change in the Company's auditor to Moore Australia Audit (WA); and
- The consolidation of the issued capital of the Company on a 1 share for every 12 shares held basis. As at the date of this quarterly report, the Company now has the following securities on issue:

Class of Security	No. of Securities
Listed Securities:	
RCM - Ordinary Shares	798,518,782
RCMO - Listed Options Exercisable at \$0.204 expiring 23 October 2027	89,228,175
Unlisted Securities:	
RCMAA - Unlisted Options Exercisable at \$0.0612 expiring 2 June 2030	7,500,003
RCMAB - Unlisted Options Exercisable at \$0.18 expiring 19 June 2028	3,333,334
RCMAI - Unlisted Options Exercisable at \$0.204 expiring 4 November 2029	7,931,204
RCMAD - Unlisted Options Exercisable at \$4.008 expiring 15 December 2026	1,511,670
RCMAJ - Unlisted Options Exercisable at \$0.04008 expiring 17 July 2030	25,552,595
RCMAC - Unlisted Options Exercisable at \$0.063 expiring 17 July 2028	15,970,372
Total Issued Capital	949,546,135³

Table 1: Rapid Capital Structure.

PROJECTS:

➤ NSW Project – Conrads, Webbs and Webbs Consol Silver Projects:

As announced to the ASX on 22 May, 2025 and referred to above, the Company entered into a SPA to acquire all of the shares in two subsidiaries of SMG, being Conrad Resources Pty Ltd and Webbs Resources Pty Ltd, for a total consideration of A\$6.50 million in cash and shares. The Transaction was completed on 24 July, 2025.

Full details of the acquisition and the background on the silver projects are outlined above and contained within the Company's announcement of 22 May, 2025 which includes exploration results, a Competent Persons Statement and relevant JORC table information.

Details of the licenses held by RCM for the Conrads and Webbs Projects is shown below.

Tenement Number	Tenement Holder	Determination/Expiry Date
EPL 1050	Conrad Resources Pty Ltd	23 October, 2025
EL 5674	Webbs Resources Pty Ltd	13 January, 2029

³ The capital structure is at the date of this quarterly report and does not include the issues of securities to be voted on by shareholders at the EGM on 24 November, 2025.

For personal use only

EL 5977	Conrad Resources Pty Ltd	27 August 2025
ML 5992	Conrad Resources Pty Ltd	31 May, 2028
ML 6040	Conrad Resources Pty Ltd	31 May, 2028
ML 6041	Conrad Resources Pty Ltd	31 May, 2028
EL 9799	Rapid Silver Pty Ltd	8 August, 2027

Table 2: Rapid's NSW Tenement Holdings⁴.

Following completion of the acquisition, the Company made a number of significant announcements advancing the project forward including that approval had been granted for a Diamond Drilling (DD) program at the Company's flagship Webbs Silver Project in northern New South Wales.

The DD program represents the first step in Rapid's broader exploration strategy across its newly acquired NSW silver portfolio. The initial drill campaign comprises diamond holes for approximately 2,000 metres, designed to:

1. Upgrade the existing resource to 2025 JORC compliance;
2. Improve geological confidence in current resource categories;
3. Test highly-prospective southern extensions; and
4. Investigate a potential parallel lode to the west.

The Company announced on 28 August, 2025 that the DD program had commenced.

These targets were refined following the completion of a microgravity survey in June 2025, which identified multiple gravity highs west of the main mineralised trend.

This work, combined with recent lidar imaging and structural interpretation, confirms and expands the modelled, extensive fault-hosted system with significant prospective potential both along the structures strike and for multiple, parallel targets.

Lidar imaging and field mapping confirm that the surface expression of reefs, coincident with mineralisation at the deposit, repeat to the north and south along the strike of the mineralized structure. Historical workings clearly map onto the trend of the identified reef and can be seen, on the structural trend extending both north and south of the deposit. Interpretation of the Complete Bouguer Anomaly (CBA) gravity data indicate at least two distinct density domains separated by the north-south trending structure coincident with mineralisation, further validating the potential for along-strike and parallel-lode expansion, particularly on the western, poorly tested part of the mineralized structure.

Commenting on the approval for the Diamond Drilling Program and upside exploration potential at Webbs South, Rapid's Managing Director Byron Miles commented:

"With drilling now approved and high-priority targets in hand, we're moving quickly to unlock the upside potential of the Webbs Silver Project. Our immediate focus is on upgrading and expanding the resource, but we're equally excited by the potential for new discoveries in this underexplored silver corridor. This is an important step in building a robust silver inventory and delivering near-term exploration catalysts for shareholders."

⁴ The tenement table does not include EL 8933 and EL 9454 to be acquired from Lode Resources and subject to shareholder approval. Renewal applications have also been lodged for EPL 1050 and EL 5977.

For personal use only

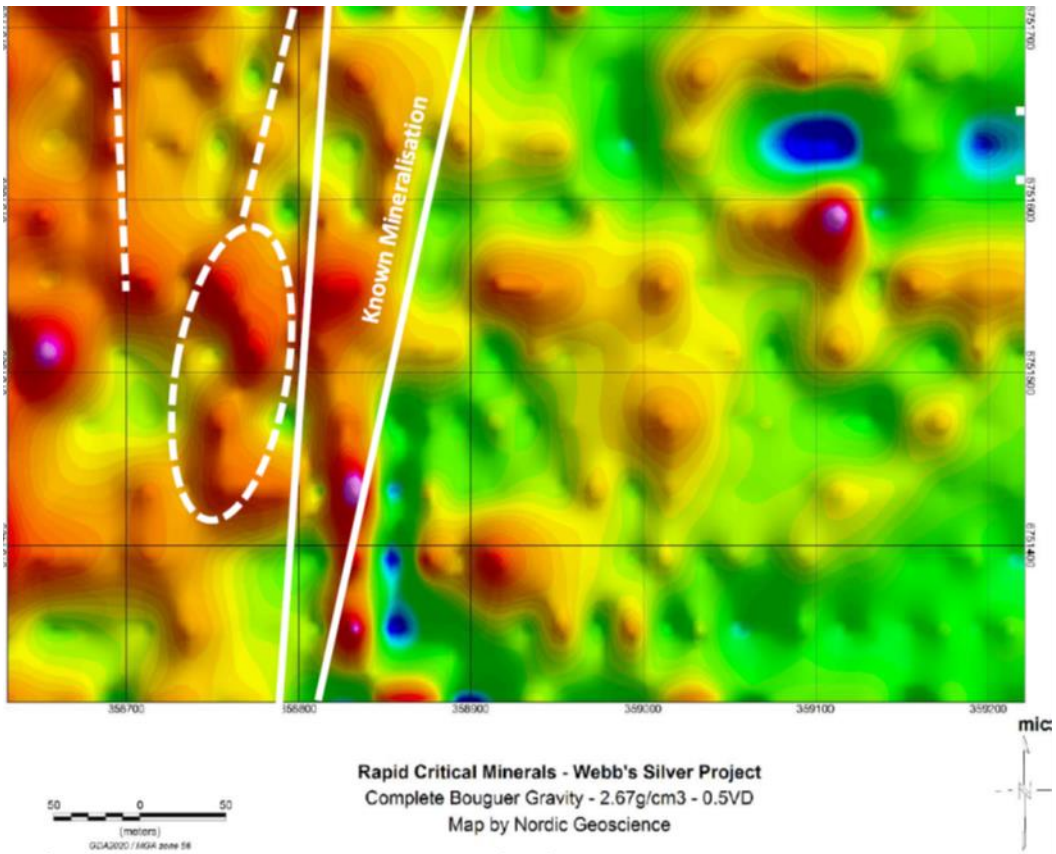


Figure 3: Geophysics and lidar confirm structurally controlled silver, polymetallic system at Webbs CBA data highlights two distinct density zones separated by a north-south lithological boundary aligned with mineralisation, with several gravity highs intersecting the western domain. Lidar and historic workings support multiple drill targets and strong potential for extensions along strike. Potential presence of structures crossing the known mineralisation at oblique angles may be prospective targets.

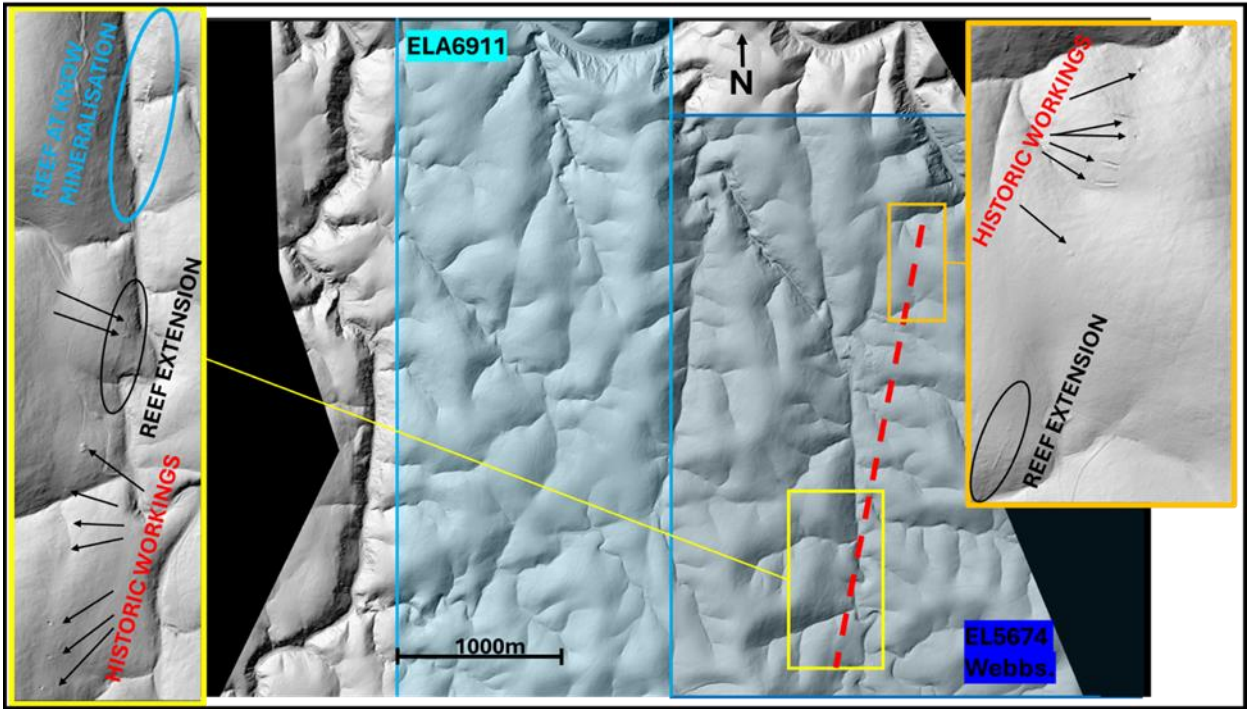


Figure 4: Newly identified reef extensions and historical workings, significant increase in understanding of the scale of structure associated with mineralisation.

During the quarter, Rapid announced that the New South Wales Department of Primary Industries had granted the Company's application for Exploration Licence EL9799. The significance of the granting of EL 9799 was highlighted in the Company's announcement of 13 August, 2025 which stated, in part:

- *"..Newly granted EL9799 expands RCM's NSW landholding by 26 X, consolidating a strategic position across a highly prospective silver corridor between RCM's Webbs and ASX-listed Lode Resources Limited's (ASX: LDR) (Lode Resources), premier silver asset, Webbs Consol.*
- *Securing EL9799 provides continuous tenure to Lode Resources (LDR) and abuts Rapid's Webbs Silver Project, expanding holding over an area of potential parallel lodes both adjacent to and along strike from the high-grade Webbs Silver Project...*
- *Includes historical small-scale silver workings between the Webbs and Lode tenements, highlighting prospectivity for additional structures.*
- *Adds significant tenure over the famously mineral rich Mole Granite and its peripheral contact, highly prospective for further silver, tin, tungsten, LCT pegmatites and REE, critical minerals..."*

For personal use only

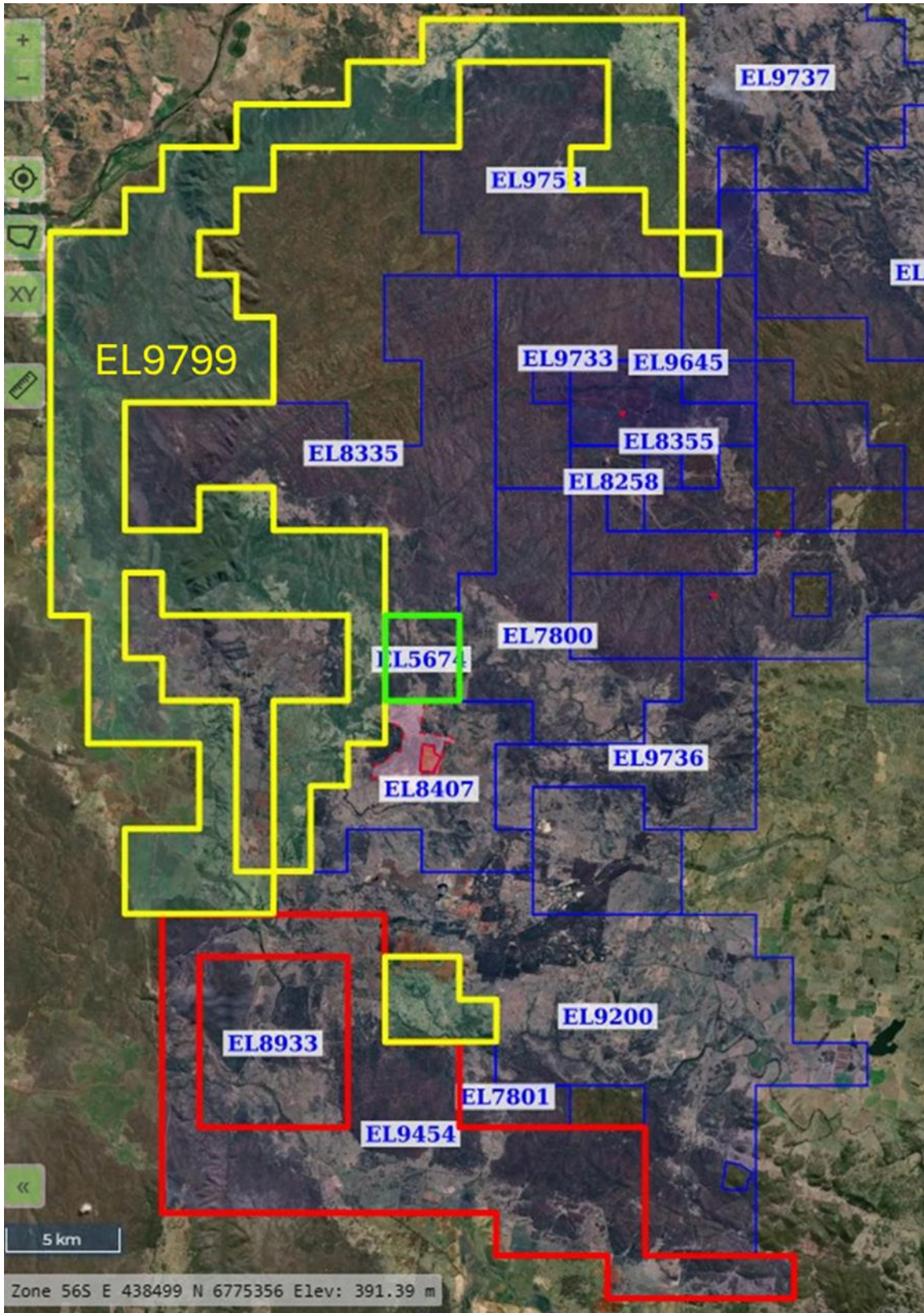


Figure 5: Location map showing Webbs Silver Project (in green), and new tenement under Exploration Licence 9799 (in yellow).

Commenting on the granting of EL 9799 at the time, Rapid's Managing Director, Byron Miles, said:

“Securing EL9799 is another important step in building a dominant position across one of Australia's most prospective silver belts. This licence not only adds scale to our portfolio but gives us strategic control over a continuous corridor between our Webbs Project and Lode Resources' ground. With known high-grade silver mineralisation and underexplored potential for blind parallel lodes, this expanded land position significantly enhances our discovery pipeline.”

➤ Canada:

In the previous quarter, the Company closed on the acquisition from Broadstone of the mineral claims that comprise the Prophet River Gallium (Ga) – Germanium (Ge) Project located in British Columbia, Canada.

Pursuant to the acquisition, Rapid acquired a 100% interest in 2,110 Ha (21km²) covering the historic Cay Mine and surrounding prospective areas. Previous exploration at the Prophet River project includes 21 previous drill holes with bulk samples from two zones grading up to 22.69% Zn, 40ppm (g/t) Ga, 1,500ppm Ge and 0.36% Pb⁵.

Prophet River bulk samples reported some of the highest Germanium values recorded globally, underpinning it as a key strategic project. Gallium and Germanium are exceptionally high value strategic metals used in the technology sector, semi-conductors, fibre-optics, solar cells, magnets, batteries and LEDs with recent increases in commodity prices – China has banned the export of Germanium and Gallium making it a key strategic metal of high value.

During the quarter, the following work was undertaken:

- Field crews were mobilised and camp construction completed at Prophet River. Upon completing the 2025 campaign, the camp was disassembled and the area was reclaimed;
- Geophysical survey (IP + MT) was completed to map structures down to 1,500m;
- Sampling and confirmatory geologic work was completed. This information will be used to support 2026 drilling design; and
- Positioned to unlock gallium–germanium potential in a Tier-1 jurisdiction.

The 2025 work program was started with:

- Geologists mobilized to site to conduct new and confirmatory sampling;
- A camp was erected for use during the 2025 field campaign; and
- Geophysical campaign was completed.

Geologists were on site and completed confirmatory sampling of historic sampling areas and new reconnaissance sampling. Historic drilling areas and high-grade germanium outcrops, including the Wolverine and Nose Showings (previously reporting 400–1,500 ppm Ge), have been located and resampled. In addition, historic drill core stored on site has been examined to provide further geological context.

⁵ Refer to the Company's announcement of 20 December, 2024 for full details of exploration results and relevant JORC table information.



Figure 6: Personnel examining historic core on site at Prophet River.

Camp construction was completed to allow for efficient and cost-effective conducting of the 2025 campaign. Upon completion of the geophysical and geologic sampling campaign, the camp was disassembled and the area reclaimed.

The 2025 geophysical campaign was completed and included DC resistivity/induced polarization (IP) and collection of Magnetotelluric (MT) data. This will allow better understanding of the geologic structures of the area at depth. The IP data will provide information on geologic structures to approximately 300 meters, while the MT data is complementary to the IP data and will provide information up to 1,500 meters in depth. This data, along with the sampling data, will be used to design the 2026 drilling program. After design of this program, the permitting will begin to allow for an expected mid-year 2026 start.



Figure 7: Camp being erected at Prophet River.

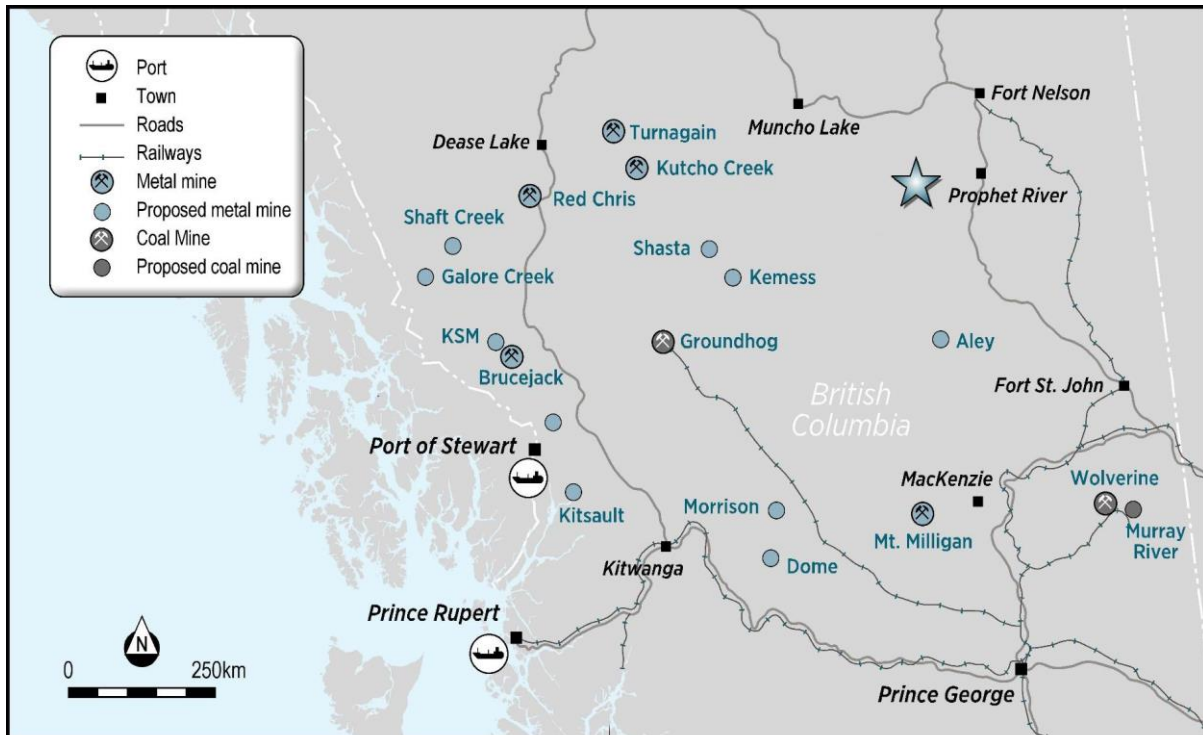


Figure 8: Prophet River Location Map, British Columbia, Canada.

For personal use only

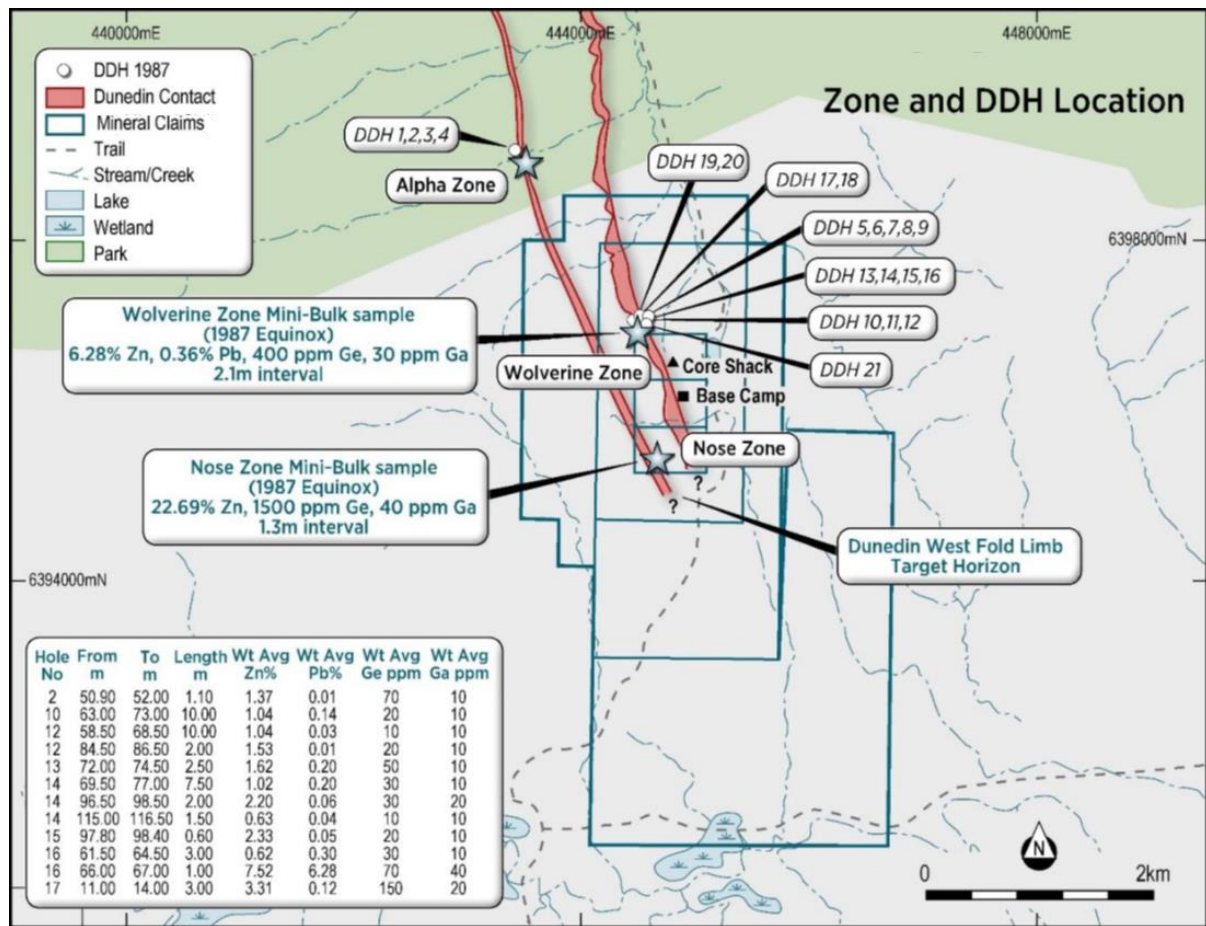


Figure 9: Prophet River, British Columbia. Map illustrates the previous exploration work undertaken at the Prophet River project including drilling and bulk sampling. The interpreted parallel units of the Dunedin Contact are also shown with a strike of 6 km across the project claims which remains open to the south-east. Broadstone also owns the mineral claims north of the historic Cay Mine including the historic workings at the Alpha Zone.

Details of the licenses held by Rapid’s wholly owned Canadian subsidiary for the Prophet River Project is shown below.

Tenement Holder			Project		# of Licenses	
Rapid Exploration Canada Limited			Prophet River		10	
Title Number	Claim Name	Title Type	Title Sub Type	Good To Date	Status	Area (ha)
1095464		Mineral	Claim	2035/NOV/02	GOOD	103.7608
1101990	CAY 2	Mineral	Claim	2036/MAR/04	GOOD	17.2936
1101994	CAY 3	Mineral	Claim	2036/MAR/04	GOOD	34.5952
1101999		Mineral	Claim	2036/MAR/04	GOOD	17.2956
1102350	CAY 4	Mineral	Claim	2036/MAR/20	GOOD	121.0174
1105850	CAY 6	Mineral	Claim	2036/FEB/07	GOOD	397.7379
1106032		Mineral	Claim	2036/FEB/13	GOOD	103.7563
1106033		Mineral	Claim	2036/FEB/13	GOOD	467.2639
1106034		Mineral	Claim	2036/FEB/13	GOOD	553.7321
1106226	CAY A	Mineral	Claim	2036/FEB/21	GOOD	293.8965

Table 3: Rapid’s Prophet River Tenement Holdings.

➤ United States:

On 1 July, 2025, the Company announced that it has entered into a Sale Purchase Agreement with a subsidiary of ASX-listed Iris Metals Limited (**ASX: IR1**), for the sale of the Company's Tin Mountain property in South Dakota, USA for the sale of the 93 federal mining claims covering 752 hectares held by Rapid's subsidiary, South Dakota Operations LLC. The sale was completed during the quarter.

The consideration payable under the Transaction included:

- Share Issuance: US\$550,000 payable in IR1 shares, which resulted in the issuance of 7,455,912 IR1 shares;
- Cash Payment: A US\$300,000 cash payment to the original claim vendor, F3 Gold LLC, completed on 30 June 2025; and
- Royalty: F3 Gold LLC will retain a 2% gross revenue royalty on future production from the 93 claims, ensuring a low-cost structure for IRIS to advance exploration.

During the quarter, Rapid also announced that it had entered into a Sale Purchase Agreement which is also with a subsidiary of IR1 for the sale of the Company's Ingersoll private project properties in South Dakota, USA comprising 30.99 hectares held by Rapid's subsidiary, South Dakota RE LLC. The agreement also offered Federal claims held by Rapid's subsidiary, South Dakota Operations LLC to Iris Metals Limited.

The Transaction Terms include:

The consideration payable to Rapid under the Transaction includes:

- Share Issuance: US\$625,000 payable in IR1 shares being a total of 10,683,756 IR1 shares with 50% at completion and 50% issued 3 months following completion, with the issue of shares subject to shareholder approval; and
- Cash Payment: A US\$50,000 cash payment to Rapid.

Details of the licenses held by RCM's wholly owned US subsidiaries are as follows:

Project	# of Licenses
Hill City	533
Keystone	98
Phelps	199
Scott's Rose	164
Other	1

Table 4: Rapid's 995 Federal Claims (*refer Annexure A for details*) as of 30 September, 2025.

The Company also has an interest in private claims, through various options agreements as follows:

Project	Size (acres)
Ingersoll	30.99
Old Mike Mica	41.322

Table 5: Rapid's Private claims held through option agreements as of 30 September, 2025.

➤ Zimbabwe:

The Bend Nickel Project (**'Bend'**) is located approximately 150km southeast of Bulawayo in Zimbabwe. The project is centred on 805600E / 7719750N (Datum ARC1950 Zone 35S). The Bend Deposit is located within the central part of Bend Project area. Bend is a classic komatiite-style deposit associated with the interpreted base of the ultramafic Upper Reliance Formation.

The Company has previously announced the signing of a binding term sheet to acquire an 80% controlling interest in the Bend Nickel Project in Zimbabwe (*refer ASX announcement of 20 July 2023*) (**Term Sheet**). Pursuant to the Term Sheet, the Company has earned a 50% interest in the project. No significant activities were undertaken in Zimbabwe during the June 2025 Quarter given the strong focus on corporate activities and the NSW silver projects.

In terms of the forward work program, the Company is concerning its strategic objectives for the Zimbabwean project including the sale of its interest.

License:	Holder	Expiry
Bend F Claims (5944 BM)	Mount McKinley Enterprises	No expiry but next inspection is August 2025
SG 9411	DGL Investment Number 14	5 July 2025
SG 9412	DGL Investment Number 14	5 July 2025

Table 6: Rapid Lithium's Zimbabwe Exploration Permit details. The licenses are in the process of being renewed.

The Company holds a 50% interest in the joint venture entity, Reliant Nickel Mauritius, whose subsidiaries (DGL Investment Number 14 and Mount McKinley Enterprises) hold the Zimbabwe tenements.

➤ Gabon:

As announced to the ASX in previous quarters and in its announcement of 11 September 2024, the Company recorded an impairment of AUD\$11.5m with respect to its Gabon assets with the decision taken due to the focus on the Company's other assets.

Permit ¹	Area (km ²)	Granted	Term	End date	Registered Holder	Interest
G5-150	1,230	29 November 2022	3 yrs	29 November 2025	Armada Exploration Gabon Sarl	100%

Table 7: Rapid Lithium's Exploration Permit Details. RCM held licenses for the above tenement at the end of the September 2025 Quarter. The tenement is 100% owned by RCM's wholly owned subsidiary, Armada Exploration Gabon SARL.

Given the focus on the Company's other projects, the plan for Gabon continues to be to undertake an orderly wind own of the Company's operations.

Exploration Expenditure:

Pursuant to ASX Listing Rule 5.3.1, Rapid provides the following breakdown of the exploration expenditure of \$624,000 stated in section 2.1(d) and 8.2 of the attached Appendix 5B, which was incurred across the September 2025 Quarter.

Project	Expenditure Amount
Australia	\$216,000
Canada	\$398,000
USA Projects	\$0
Zimbabwe	\$10,000
Total	\$624,000

Table 8: Listing Rule 5.3.1 information.

Projects Expenditure:

In accordance with ASX Listing Rule 5.3.5 and as noted in section 6.1 of the Appendix 5B, payments of \$574,000 were made during the Quarter for salaries and fees for the Company's executive and non-executive directors and included the settlement of historical deferred fees and termination payments. No other payments were made to any related parties of the entity or their associates.

Pursuant to Listing Rule 5.3.2, the Company advises that it did not undertake any mining or development production activities during the Quarter.

Material ASX Announcements:

Date	Price Sensitive	Title
1 July	Yes	Sale of Tin Mountain US Project
16 July		Completion of Consolidation and Placement
25 July	Yes	Silver Acquisition Completion & Appointment of New MD
6 August		Drilling Approved at Webbs Silver Project – Upside Potential
13 August	Yes	Strategic EL Secured - Expands Control of NSW Silver Corridor
28 August	Yes	Drilling Commences at Webbs Silver Project
1 September	Yes	RCM to Acquire Webbs Consol Silver Project from Lode Resources
10 September	Yes	Sale of Ingersoll Project & Completion of Tin Mountain Sale
17 September	Yes	\$14M Placement to Fund Acquisition & Exploration
29 September	Yes	Execution of SPA to Acquire Webbs Consol from Lode Resources

Table 9: Summary of material ASX Announcements released on the Rapid ASX Platform during and subsequent to the end of the September 2025 Quarter.

Events Subsequent to the end of the September 2025 Quarter:

There have been no other material subsequent events not already outlined in this Quarterly Activities Report.

This Quarterly Activities Report and Appendix 5B were authorised on behalf of the Company by the Rapid Critical Metals Board.

For more information about this Quarterly Activities Report:

Byron Miles
Managing Director
bmiles@rapidmetals.com.au

Annexure A

# Claim	BLM Case/Serial Number	Case Name	Meridian Township Range Section	Quadrant
1.	MT101572551	SODA SPAR	07 0020S 0060E 022	SE
2.	MT105779239	EH01	07 0020S 0060E 016	NW
3.	MT105779240	EH02	07 0020S 0060E 016	NW
4.	MT105779241	EH03	07 0020S 0060E 016	NW
5.	MT105779242	EH04	07 0020S 0060E 016	NW
6.	MT105779243	EH05	07 0020S 0060E 008	SE
7.	MT105779244	EH06	07 0020S 0060E 008	SE
8.	MT105779245	EH07	07 0020S 0060E 008	NE
9.	MT105779246	PH001	07 0020S 0040E 034	SE
10.	MT105779247	PH002	07 0020S 0040E 002	NW
11.	MT105779248	PH003	07 0020S 0040E 034	SE
12.	MT105779249	PH004	07 0020S 0040E 034	SE
13.	MT105779250	PH005	07 0020S 0040E 034	SE
14.	MT105779251	PH006	07 0020S 0040E 034	SE
15.	MT105779252	PH007	07 0020S 0040E 035	SE
16.	MT105779253	PH009	07 0030S 0040E 003	NE
17.	MT105779254	PH010	07 0030S 0040E 003	NE
18.	MT105779255	PH011	07 0030S 0040E 003	SE
19.	MT105779256	PH012	07 0030S 0040E 002	NW
20.	MT105779257	PH013	07 0030S 0040E 002	NW
21.	MT105779258	PH014	07 0030S 0040E 002	NW
22.	MT105779259	PH015	07 0030S 0040E 002	NW
23.	MT105779260	PH016	07 0030S 0040E 002	NE
24.	MT105779261	PH017	07 0030S 0040E 002	NE
25.	MT105779262	PH018	07 0030S 0040E 003	SW
26.	MT105779263	PH019	07 0030S 0040E 003	SE
27.	MT105779264	PH021	07 0030S 0040E 003	SE
28.	MT105779265	PH022	07 0030S 0040E 003	SE
29.	MT105779266	PH023	07 0030S 0040E 002	SW
30.	MT105779267	PH024	07 0030S 0040E 002	SW
31.	MT105779268	PH025	07 0030S 0040E 002	SW
32.	MT105779269	PH026	07 0030S 0040E 002	SW
33.	MT105779270	PH027	07 0030S 0040E 002	SE
34.	MT105779271	PH028	07 0030S 0040E 002	SE
35.	MT105779272	PH029	07 0030S 0040E 002	SE
36.	MT105779273	PH030	07 0030S 0040E 003	SE
37.	MT105779274	PH031	07 0030S 0040E 003	SE
38.	MT105779275	PH032	07 0030S 0040E 003	SE
39.	MT105779276	PH033	07 0030S 0040E 002	SW
40.	MT105779277	PH034	07 0030S 0040E 002	SW

For personal use only

For personal use only

41.	MT105779278	PH035	07 0030S 0040E 002	SW
42.	MT105779279	PH036	07 0030S 0040E 002	SW
43.	MT105779280	PH037	07 0030S 0040E 002	SE
44.	MT105779281	PH038	07 0030S 0040E 002	SE
45.	MT105779282	PH039	07 0030S 0040E 002	SE
46.	MT105779283	PH040	07 0030S 0040E 011	NE
47.	MT105779284	PH041	07 0030S 0040E 010	NE
48.	MT105779285	PH042	07 0030S 0040E 002	NE
49.	MT105779286	PH043	07 0030S 0040E 002	NE
50.	MT105779287	PH044	07 0030S 0040E 002	NE
51.	MT105779288	PH045	07 0030S 0040E 002	NE
52.	MT105779289	PH046	07 0030S 0040E 002	NE
53.	MT105779290	PH047	07 0030S 0040E 011	NE
54.	MT105779291	PH048	07 0030S 0040E 011	NE
55.	MT105779292	PH049	07 0030S 0040E 011	NE
56.	MT105779293	PH050	07 0030S 0040E 011	NE
57.	MT105779294	PH051	07 0030S 0040E 002	NW
58.	MT105779295	PH052	07 0030S 0040E 002	NW
59.	MT105779296	PH053	07 0030S 0040E 002	SW
60.	MT105779297	PH054	07 0030S 0040E 002	NE
61.	MT105779298	PH055	07 0030S 0040E 011	NE
62.	MT105779299	PH057	07 0030S 0040E 011	NE
63.	MT105779300	PH058	07 0030S 0040E 011	NE
64.	MT105779301	PH059	07 0030S 0040E 011	NE
65.	MT105779302	PH060	07 0030S 0040E 010	SE
66.	MT105779303	PH061	07 0030S 0040E 011	SW
67.	MT105779304	PH062	07 0030S 0040E 011	SW
68.	MT105779305	PH063	07 0030S 0040E 011	SW
69.	MT105779306	PH064	07 0030S 0040E 011	SE
70.	MT105779307	PH065	07 0030S 0040E 011	SE
71.	MT105779308	PH066	07 0030S 0040E 011	SE
72.	MT105779309	PH067	07 0030S 0040E 011	SE
73.	MT105779310	PH068	07 0030S 0040E 011	SE
74.	MT105779311	PH069	07 0030S 0040E 011	SE
75.	MT105779312	PH070	07 0030S 0040E 012	SW
76.	MT105779313	PH071	07 0030S 0040E 012	SW
77.	MT105779314	PH073	07 0030S 0040E 010	SE
78.	MT105779315	PH074	07 0030S 0040E 011	SW
79.	MT105779316	PH075	07 0030S 0040E 011	SW
80.	MT105779317	PH076	07 0030S 0040E 011	SW
81.	MT105779318	PH077	07 0030S 0040E 011	SE
82.	MT105779319	PH078	07 0030S 0040E 011	SE
83.	MT105779320	PH079	07 0030S 0040E 011	SE

For personal use only

84.	MT105779321	PH080	07 0030S 0040E 011	SE
85.	MT105779322	PH081	07 0030S 0040E 011	SE
86.	MT105779323	PH082	07 0030S 0040E 011	SE
87.	MT105779324	PH083	07 0030S 0040E 012	SW
88.	MT105779325	PH084	07 0030S 0040E 012	SW
89.	MT105779326	PH085	07 0030S 0040E 012	SW
90.	MT105779327	PH086	07 0030S 0040E 012	SE
91.	MT105779328	PH087	07 0030S 0040E 014	NW
92.	MT105779329	PH088	07 0030S 0040E 014	NW
93.	MT105779330	PH089	07 0030S 0040E 014	NW
94.	MT105779331	PH090	07 0030S 0040E 014	NW
95.	MT105779332	PH091	07 0030S 0040E 014	NE
96.	MT105779333	PH092	07 0030S 0040E 014	NE
97.	MT105779334	PH093	07 0030S 0040E 014	NE
98.	MT105779335	PH094	07 0030S 0040E 014	NE
99.	MT105779336	PH095	07 0030S 0040E 014	NE
100.	MT105779337	PH096	07 0030S 0040E 013	NW
101.	MT105779338	PH097	07 0030S 0040E 013	NW
102.	MT105779339	PH098	07 0030S 0040E 013	NW
103.	MT105779340	PH099	07 0030S 0040E 014	NW
104.	MT105779341	PH100	07 0030S 0040E 014	NW
105.	MT105779342	PH102	07 0030S 0040E 014	NW
106.	MT105779343	PH103	07 0030S 0040E 014	NE
107.	MT105779344	PH104	07 0030S 0040E 014	NE
108.	MT105779345	PH105	07 0030S 0040E 014	NE
109.	MT105779346	PH106	07 0030S 0040E 013	SW
110.	MT105779347	PH107	07 0030S 0040E 013	SW
111.	MT105779348	PH108	07 0030S 0040E 013	SW
112.	MT105779349	PH115	07 0030S 0040E 014	NE
113.	MT105779350	PH116	07 0030S 0040E 014	NE
114.	MT105779351	PH117	07 0030S 0040E 013	SW
115.	MT105779352	PH118	07 0030S 0040E 013	SE
116.	MT105779353	WT001	07 0020S 0060E 015	SE
117.	MT105779354	WT002	07 0020S 0060E 015	SE
118.	MT105779355	WT003	07 0020S 0060E 022	NE
119.	MT105779356	WT005	07 0020S 0060E 023	NW
120.	MT105779357	WT006	07 0020S 0060E 023	NW
121.	MT105779358	WT007	07 0020S 0060E 023	NE
122.	MT105779359	WT008	07 0020S 0060E 021	SE
123.	MT105779360	WT009	07 0020S 0060E 022	NW
124.	MT105779361	WT010	07 0020S 0060E 022	NE
125.	MT105779362	WT011	07 0020S 0060E 022	NE
126.	MT105779363	WT012	07 0020S 0060E 022	NE

For personal use only

127.	MT105779364	WT013	07 0020S 0060E 022	NE
128.	MT105779365	WT014	07 0020S 0060E 022	NE
129.	MT105779366	WT015	07 0020S 0060E 023	NW
130.	MT105779367	WT016	07 0020S 0060E 023	NW
131.	MT105779368	WT017	07 0020S 0060E 023	NW
132.	MT105779369	WT018	07 0020S 0060E 023	NW
133.	MT105779370	WT019	07 0020S 0060E 021	SE
134.	MT105779371	WT020	07 0020S 0060E 022	NW
135.	MT105779372	WT021	07 0020S 0060E 022	NW
136.	MT105779373	WT022	07 0020S 0060E 022	NW
137.	MT105779374	WT023	07 0020S 0060E 022	NW
138.	MT105779375	WT024	07 0020S 0060E 022	SE
139.	MT105779376	WT025	07 0020S 0060E 022	SE
140.	MT105779377	WT026	07 0020S 0060E 022	SE
141.	MT105779378	WT027	07 0020S 0060E 022	SE
142.	MT105779379	WT028	07 0020S 0060E 023	SW
143.	MT105779380	WT029	07 0020S 0060E 023	SW
144.	MT105779381	WT030	07 0020S 0060E 022	SE
145.	MT105779382	WT031	07 0020S 0060E 022	SE
146.	MT105779385	WT034	07 0020S 0060E 027	NE
147.	MT105779386	WT105	07 0020S 0060E 013	NW
148.	MT105779387	WT106	07 0020S 0060E 013	NW
149.	MT105779388	WT107	07 0020S 0060E 013	NW
150.	MT105779389	WT108	07 0020S 0060E 013	NE
151.	MT105779390	WT109	07 0020S 0060E 013	NE
152.	MT105779391	WT110	07 0020S 0060E 013	NE
153.	MT105779392	WT111	07 0020S 0060E 013	NE
154.	MT105779393	WT112	07 0020S 0060E 013	NE
155.	MT105779394	WT113	07 0020S 0060E 013	NE
156.	MT105779395	WT114	07 0020S 0060E 012	SW
157.	MT105779396	WT115	07 0020S 0060E 012	SE
158.	MT105779397	WT116	07 0020S 0060E 012	SE
159.	MT105779398	WT117	07 0020S 0060E 012	SE
160.	MT105779399	WT118	07 0020S 0060E 012	SE
161.	MT105779400	WT119	07 0020S 0060E 012	SE
162.	MT105779401	WT120	07 0020S 0060E 012	SE
163.	MT105779402	WT121	07 0020S 0060E 012	SE
164.	MT105779403	WT122	07 0020S 0060E 012	SE
165.	MT105779404	WT123	07 0020S 0060E 012	NE
166.	MT105779405	WT124	07 0020S 0060E 012	NE
167.	MT105779406	WT125	07 0020S 0060E 012	NE
168.	MT105779407	WT126	07 0020S 0060E 012	NE
169.	MT105779408	WT127	07 0020S 0060E 012	NE

For personal use only

170.	MT105779409	WT128	07 0020S 0060E 012	NE
171.	MT105779410	WT129	07 0020S 0060E 012	NE
172.	MT105779411	WT130	07 0020S 0060E 012	NE
173.	MT105779412	WT131	07 0020S 0060E 001	SE
174.	MT105779413	WT132	07 0020S 0060E 001	SE
175.	MT105779414	WT133	07 0020S 0060E 001	SE
176.	MT105779415	WT134	07 0020S 0060E 001	SE
177.	MT105779416	WT135	07 0020S 0060E 001	SE
178.	MT105779417	WT136	07 0020S 0060E 001	SE
179.	MT105779418	WT137	07 0020S 0060E 001	SE
180.	MT105779419	WT138	07 0020S 0060E 001	SE
181.	MT105780844	ML001	07 0020S 0050E 005	NW
182.	MT105780845	ML002	07 0020S 0050E 005	NW
183.	MT105780846	ML003	07 0020S 0050E 005	NE
184.	MT105780847	ML004	07 0020S 0050E 005	NE
185.	MT105780848	ML005	07 0020S 0050E 005	NE
186.	MT105780849	ML006	07 0020S 0050E 005	NE
187.	MT105780850	ML007	07 0010S 0050E 032	SE
188.	MT105780851	ML008	07 0010S 0050E 032	SE
189.	MT105780852	ML009	07 0010S 0050E 032	SE
190.	MT105780853	ML010	07 0010S 0050E 032	SE
191.	MT105780854	ML011	07 0020S 0050E 005	NE
192.	MT105780855	ML012	07 0020S 0050E 005	NE
193.	MT105780856	ML013	07 0020S 0050E 005	NE
194.	MT105780857	ML014	07 0020S 0050E 005	NE
195.	MT105780858	ML015	07 0010S 0050E 033	NE
196.	MT105780859	ML016	07 0010S 0050E 032	NE
197.	MT105780860	ML017	07 0010S 0050E 032	SE
198.	MT105780861	ML018	07 0010S 0050E 032	SE
199.	MT105780862	ML019	07 0010S 0050E 032	SE
200.	MT105780863	ML020	07 0010S 0050E 032	SE
201.	MT105780864	ML021	07 0020S 0050E 004	NW
202.	MT105780865	ML022	07 0020S 0050E 004	NW
203.	MT105780866	ML023	07 0020S 0050E 004	NW
204.	MT105780867	ML024	07 0010S 0050E 033	SW
205.	MT105780868	ML025	07 0010S 0050E 033	SW
206.	MT105780869	ML026	07 0010S 0050E 033	SW
207.	MT105780870	ML027	07 0020S 0050E 004	NW
208.	MT105780871	ML028	07 0010S 0050E 033	NE
209.	MT105780872	ML029	07 0010S 0050E 033	SE
210.	MT105780873	ML030	07 0010S 0050E 033	SE
211.	MT105780874	ML031	07 0010S 0050E 033	SE
212.	MT105780875	ML032	07 0010S 0050E 033	SE

For personal use only

213.	MT105780876	ML033	07 0020S 0050E 004	NE
214.	MT105780877	ML034	07 0020S 0050E 004	NE
215.	MT105780878	ML035	07 0010S 0050E 033	SE
216.	MT105780879	ML036	07 0010S 0050E 033	SE
217.	MT105780880	ML037	07 0020S 0050E 003	NW
218.	MT105780881	ML038	07 0020S 0050E 003	NW
219.	MT105780882	ML039	07 0020S 0050E 003	NW
220.	MT105780883	ML040	07 0020S 0050E 003	NW
221.	MT105780884	ML041	07 0010S 0050E 034	SW
222.	MT105780885	ML042	07 0010S 0050E 034	SW
223.	MT105780886	ML043	07 0010S 0050E 034	SW
224.	MT105780887	ML044	07 0020S 0050E 003	NW
225.	MT105780888	ML045	07 0020S 0050E 003	NW
226.	MT105780889	ML046	07 0020S 0050E 003	NW
227.	MT105780890	ML047	07 0020S 0050E 003	NW
228.	MT105780891	ML048	07 0020S 0050E 003	NW
229.	MT105780892	ML049	07 0020S 0050E 003	NE
230.	MT105780893	ML050	07 0010S 0050E 003	NW
231.	MT105780894	ML051	07 0010S 0050E 034	SE
232.	MT105780895	ML052	07 0010S 0050E 034	NW
233.	MT105780896	ML053	07 0010S 0050E 034	SW
234.	MT105780897	ML054	07 0010S 0050E 034	SE
235.	MT105780898	ML060	07 0020S 0040E 002	NE
236.	MT105780899	ML061	07 0020S 0040E 002	NE
237.	MT105780900	ML062	07 0020S 0040E 002	NE
238.	MT105780901	ML063	07 0020S 0040E 002	NE
239.	MT105780902	ML064	07 0020S 0040E 002	NE
240.	MT105780903	ML065	07 0020S 0040E 002	NW
241.	MT105780904	ML066	07 0020S 0040E 002	NE
242.	MT105780905	ML067	07 0020S 0040E 002	NE
243.	MT105780906	ML068	07 0020S 0040E 002	NE
244.	MT105780907	ML069	07 0020S 0040E 002	NE
245.	MT105780908	ML070	07 0020S 0040E 002	NE
246.	MT105780909	ML071	07 0020S 0040E 002	NW
247.	MT105780910	ML072	07 0020S 0040E 002	NW
248.	MT105780911	ML073	07 0020S 0040E 002	NW
249.	MT105780912	ML074	07 0020S 0040E 001	SW
250.	MT105780913	ML075	07 0020S 0040E 001	SW
251.	MT105780914	ML076	07 0020S 0040E 002	SE
252.	MT105780915	ML077	07 0020S 0040E 002	SE
253.	MT105780916	ML078	07 0020S 0040E 002	SE
254.	MT105780917	ML079	07 0020S 0040E 002	SE
255.	MT105780918	ML080	07 0020S 0040E 002	SE

For personal use only

256.	MT105780919	ML081	07 0020S 0040E 002	SW
257.	MT105780920	ML082	07 0020S 0040E 002	SW
258.	MT105780921	ML083	07 0020S 0040E 002	SW
259.	MT105780922	ML084	07 0020S 0040E 002	SW
260.	MT105780923	ML085	07 0020S 0040E 003	SE
261.	MT105780924	ML086	07 0020S 0040E 001	SW
262.	MT105780925	ML087	07 0020S 0040E 001	SW
263.	MT105780926	ML088	07 0020S 0040E 002	SE
264.	MT105780927	ML089	07 0020S 0040E 002	SE
265.	MT105780928	ML090	07 0020S 0040E 002	SE
266.	MT105780929	ML091	07 0020S 0040E 002	SE
267.	MT105780930	ML092	07 0020S 0040E 002	SE
268.	MT105780931	ML093	07 0020S 0040E 002	SW
269.	MT105780932	ML094	07 0020S 0040E 002	SW
270.	MT105780933	ML095	07 0020S 0040E 002	SW
271.	MT105780934	ML096	07 0020S 0040E 002	SW
272.	MT105780935	ML097	07 0020S 0040E 003	SE
273.	MT105780936	ML098	07 0020S 0040E 003	SE
274.	MT105780937	ML099	07 0020S 0040E 011	NE
275.	MT105780938	ML100	07 0020S 0040E 011	NE
276.	MT105780939	ML101	07 0020S 0040E 011	NE
277.	MT105780940	ML102	07 0020S 0040E 011	NE
278.	MT105780941	ML103	07 0020S 0040E 011	NE
279.	MT105780942	ML104	07 0020S 0040E 011	NW
280.	MT105780943	ML105	07 0020S 0040E 011	NW
281.	MT105780944	ML106	07 0020S 0040E 011	NW
282.	MT105780945	ML107	07 0020S 0040E 010	NE
283.	MT105780946	ML108	07 0020S 0040E 010	NE
284.	MT105780947	ML109	07 0020S 0040E 010	NE
285.	MT105780948	ML110	07 0020S 0040E 011	SE
286.	MT105780949	ML112	07 0020S 0040E 011	SE
287.	MT105780950	ML113	07 0020S 0040E 011	SE
288.	MT105780951	ML114	07 0020S 0040E 011	SW
289.	MT105780952	ML115	07 0020S 0040E 011	SW
290.	MT105780953	ML116	07 0020S 0040E 011	SW
291.	MT105780954	ML117	07 0020S 0040E 010	SE
292.	MT105780955	ML118	07 0020S 0040E 010	SE
293.	MT105780956	ML119	07 0020S 0040E 010	SE
294.	MT105780957	ML120	07 0020S 0040E 011	SW
295.	MT105780958	ML121	07 0020S 0040E 011	SW
296.	MT105780959	ML122	07 0020S 0040E 011	SW
297.	MT105780960	ML123	07 0020S 0040E 010	SE
298.	MT105780961	ML124	07 0020S 0040E 010	SE

299.	MT105780962	ML125	07 0020S 0040E 010	SE
300.	MT105780963	ML126	07 0020S 0040E 010	SE
301.	MT105780964	ML127	07 0020S 0040E 010	SE
302.	MT105780965	ML128	07 0020S 0040E 010	SE
303.	MT105780966	ML129	07 0020S 0040E 010	SW
304.	MT105780967	ML130	07 0020S 0040E 010	SW
305.	MT105780968	ML131	07 0020S 0040E 010	SW
306.	MT105780969	ML132	07 0020S 0040E 014	NW
307.	MT105780970	ML133	07 0020S 0040E 014	NW
308.	MT105780971	ML134	07 0020S 0040E 015	NE
309.	MT105780972	ML135	07 0020S 0040E 015	NE
310.	MT105780973	ML136	07 0020S 0040E 015	NE
311.	MT105780974	ML137	07 0020S 0040E 015	NE
312.	MT105780975	ML138	07 0020S 0040E 015	NE
313.	MT105780976	ML139	07 0020S 0040E 015	NW
314.	MT105780977	ML140	07 0020S 0040E 015	NW
315.	MT105780978	ML141	07 0020S 0040E 015	NW
316.	MT105780979	ML145	07 0020S 0040E 014	NE
317.	MT105780980	ML146	07 0020S 0040E 014	NE
318.	MT105780981	ML147	07 0020S 0040E 014	NE
319.	MT105780982	ML148	07 0020S 0040E 014	NE
320.	MT105780983	ML149	07 0020S 0040E 014	NW
321.	MT105780984	ML150	07 0020S 0040E 014	NW
322.	MT105780985	ML151	07 0020S 0040E 014	NW
323.	MT105780986	ML152	07 0020S 0040E 015	NE
324.	MT105780987	ML153	07 0020S 0040E 015	NE
325.	MT105780988	ML154	07 0020S 0040E 015	NE
326.	MT105780989	ML155	07 0020S 0040E 015	NE
327.	MT105780990	ML156	07 0020S 0040E 015	NE
328.	MT105780991	ML157	07 0050S 0040E 015	NW
329.	MT105780992	ML158	07 0020S 0040E 015	NW
330.	MT105780993	ML159	07 0020S 0040E 015	NW
331.	MT105780994	ML163	07 0020S 0040E 014	SE
332.	MT105780995	ML164	07 0020S 0040E 014	SE
333.	MT105780996	ML165	07 0020S 0040E 014	SE
334.	MT105780997	ML166	07 0020S 0040E 014	SE
335.	MT105780998	ML167	07 0020S 0040E 014	SW
336.	MT105780999	ML168	07 0020S 0040E 014	SW
337.	MT105781000	ML169	07 0020S 0040E 014	SW
338.	MT105781001	ML170	07 0020S 0040E 015	SE
339.	MT105781002	ML171	07 0020S 0040E 015	SE
340.	MT105781003	ML172	07 0020S 0040E 015	SE
341.	MT105781004	ML173	07 0020S 0040E 015	SE

342.	MT105781005	ML174	07 0020S 0040E 015	SW
343.	MT105781006	ML175	07 0020S 0040E 015	SW
344.	MT105781007	ML176	07 0020S 0040E 015	SW
345.	MT105781008	ML185	07 0020S 0040E 014	NE
346.	MT105781009	ML186	07 0020S 0040E 014	NE
347.	MT105781010	ML187	07 0020S 0040E 014	NE
348.	MT105781011	ML188	07 0020S 0040E 011	SE
349.	MT105781012	ML189	07 0020S 0040E 011	SE
350.	MT105781013	ML190	07 0020S 0050E 007	SW
351.	MT105781014	ML191	07 0020S 0050E 007	SW
352.	MT105781015	ML192	07 0020S 0040E 012	SE
353.	MT105781016	ML193	07 0020S 0040E 012	SW
354.	MT105781017	ML194	07 0020S 0040E 012	SE
355.	MT105781018	ML195	07 0020S 0040E 012	SE
356.	MT105781019	ML196	07 0020S 0040E 012	SW
357.	MT105781020	ML197	07 0020S 0040E 012	SW
358.	MT105781021	ML199	07 0020S 0040E 012	SE
359.	MT105781022	ML200	07 0020S 0040E 012	SE
360.	MT105781023	ML201	07 0020S 0040E 012	SE
361.	MT105781024	ML202	07 0020S 0040E 012	SE
362.	MT105781025	ML203	07 0020S 0040E 012	SE
363.	MT105781026	ML204	07 0020S 0050E 007	SW
364.	MT105781027	ML205	07 0020S 0050E 007	SW
365.	MT105781028	ML206	07 0020S 0050E 007	SW
366.	MT105781029	ML207	07 0020S 0050E 007	SW
367.	MT105781030	ML208	07 0020S 0050E 007	SE
368.	MT105781031	ML209	07 0020S 0050E 007	SE
369.	MT105781034	ML212	07 0020S 0040E 012	NE
370.	MT105781035	ML213	07 0020S 0040E 012	NE
371.	MT105781036	ML214	07 0020S 0040E 012	NE
372.	MT105781037	ML215	07 0020S 0050E 007	NW
373.	MT105781038	ML216	07 0020S 0050E 007	NW
374.	MT105781039	ML217	07 0020S 0050E 007	NE
375.	MT105781040	ML218	07 0020S 0050E 007	NE
376.	MT105781041	ML219	07 0020S 0050E 007	NE
377.	MT105781042	ML220	07 0020S 0050E 007	NE
378.	MT105781043	ML221	07 0020S 0050E 007	NE
379.	MT105781044	ML222	07 0020S 0050E 006	SW
380.	MT105781045	ML223	07 0020S 0050E 006	SW
381.	MT105781046	ML224	07 0020S 0050E 006	SW
382.	MT105781047	ML225	0020S 0050E 006	SW
383.	MT105781048	ML226	07 0020S 0050E 006	SE
384.	MT105781049	ML227	07 0020S 0050E 006	SE

For personal use only

385.	MT105781050	ML228	07 0020S 0050E 006	SE
386.	MT105781051	ML229	07 0020S 0050E 006	SE
387.	MT105781052	ML230	07 0020S 0050E 005	SW
388.	MT105781053	ML231	07 0020S 0050E 006	SW
389.	MT105781054	ML232	07 0020S 0050E 006	SE
390.	MT105781055	ML233	07 0020S 0050E 006	SE
391.	MT105781056	ML234	07 0020S 0050E 006	SE
392.	MT105781057	ML235	07 0020S 0050E 006	SE
393.	MT105781058	ML236	07 0020S 0050E 005	SW
394.	MT105781059	ML237	07 0020S 0050E 006	NE
395.	MT105781060	ML238	07 0020S 0050E 006	NE
396.	MT105781061	ML239	07 0020S 0050E 006	NE
397.	MT105781062	ML240	07 0020S 0050E 006	NE
398.	MT105781063	ML241	07 0020S 0050E 005	NW
399.	MT105781065	ML251	07 0020S 0040E 001	SE
400.	MT105781066	ML252	07 0020S 0040E 001	SE
401.	MT105781067	ML253	07 0020S 0040E 001	SE
402.	MT105781068	ML254	07 0020S 0040E 001	SE
403.	MT105781069	ML255	07 0020S 0040E 001	SE
404.	MT105781070	ML256	07 0020S 0040E 001	SE
405.	MT105781071	ML257	07 0020S 0040E 001	SE
406.	MT105781072	ML258	07 0020S 0040E 001	SE
407.	MT105781073	ML259	07 0020S 0040E 001	SE
408.	MT105781074	ML260	07 0020S 0050E 006	SW
409.	MT105781075	ML261	07 0020S 0050E 006	SW
410.	MT105781076	ML262	07 0020S 0040E 001	NE
411.	MT105781077	ML263	07 0020S 0040E 001	NE
412.	MT105781078	ML264	07 0020S 0040E 001	NE
413.	MT105781079	ML265	07 0020S 0040E 001	NE
414.	MT105781080	ML266	07 0020S 0050E 006	NW
415.	MT105781081	ML267	07 0020S 0050E 006	NW
416.	MT105781082	ML268	07 0020S 0050E 006	NW
417.	MT105781083	ML269	07 0020S 0050E 006	NE
418.	MT105781084	ML270	07 0020S 0040E 001	NE
419.	MT105781085	ML271	07 0020S 0040E 001	NE
420.	MT105781086	ML272	07 0020S 0040E 001	NE
421.	MT105781087	ML273	07 0020S 0050E 006	NW
422.	MT105781088	ML274	07 0020S 0050E 006	NW
423.	MT105781089	ML275	07 0020S 0050E 006	NW
424.	MT105781090	ML276	07 0020S 0050E 006	NE
425.	MT105781091	ML277	07 0020S 0050E 006	NE
426.	MT105781092	ML278	07 0020S 0050E 006	NE
427.	MT105781093	ML279	07 0020S 0050E 006	NE

428.	MT105781094	ML280	07 0020S 0050E 005	NW
429.	MT105781095	ML281	07 0010S 0050E 032	SW
430.	MT105781096	ML282	07 0010S 0040E 036	SE
431.	MT105781097	ML283	07 0010S 0040E 036	SE
432.	MT105781098	ML284	07 0010S 0050E 031	SW
433.	MT105781099	ML285	07 0010S 0050E 031	SW
434.	MT105781100	ML286	07 0010S 0050E 031	SW
435.	MT105781101	ML287	07 0010S 0050E 031	SE
436.	MT105781102	ML289	07 0010S 0050E 031	SE
437.	MT105781103	ML290	07 0010S 0050E 031	SE
438.	MT105781104	ML291	07 0010S 0050E 031	SE
439.	MT105781105	ML292	07 0010S 0050E 031	SE
440.	MT105781106	ML293	07 0010S 0040E 036	SE
441.	MT105781107	ML294	07 0010S 0040E 036	SE
442.	MT105781108	ML295	07 0010S 0050E 031	SW
443.	MT105781109	ML296	07 0010S 0050E 031	SW
444.	MT105781110	ML297	07 0010S 0050E 031	SW
445.	MT105781111	ML298	07 0010S 0050E 031	SE
446.	MT105781112	ML299	07 0010S 0050E 031	SE
447.	MT105781113	ML300	07 0010S 0050E 031	SE
448.	MT105781114	ML301	07 0010S 0050E 031	SE
449.	MT105781115	ML302	07 0010S 0050E 031	SE
450.	MT105781116	ML303	07 0010S 0040E 036	NE
451.	MT105781117	ML304	07 0010S 0040E 036	NE
452.	MT105781118	ML305	07 0010S 0050E 031	NW
453.	MT105781119	ML306	07 0010S 0050E 031	NE
454.	MT105781120	ML307	07 0010S 0050E 031	NE
455.	MT105781121	ML308	07 0010S 0050E 031	NE
456.	MT105781122	ML309	07 0010S 0050E 031	NE
457.	MT105781123	ML310	07 0010S 0050E 030	SE
458.	MT105781124	ML311	07 0010S 0050E 030	SE
459.	MT105781125	ML312	07 0010S 0050E 030	SE
460.	MT105781126	ML313	07 0010S 0050E 029	SW
461.	MT105781127	ML314	07 0010S 0050E 030	SE
462.	MT105781128	ML315	07 0010S 0050E 029	SW
463.	MT105781129	ML316	07 0010S 0050E 029	SW
464.	MT105781130	ML317	07 0010S 0050E 029	SW
465.	MT105781131	ML318	07 0010S 0050E 029	SW
466.	MT105781132	ML322	07 0010S 0050E 028	SE
467.	MT105781133	ML323	07 0010S 0050E 028	SE
468.	MT105781134	ML324	07 0010S 0050E 028	SE
469.	MT105781135	ML326	07 0010S 0050E 027	NW
470.	MT105781136	ML327	07 0010S 0050E 027	SW

471.	MT105781137	ML328	07 0010S 0050E 028	SE
472.	MT105781138	ML417	07 0030S 0040E 015	NE
473.	MT105781139	ML418	07 0030S 0040E 010	SE
474.	MT105781140	ML419	07 0030S 0040E 010	SE
475.	MT105781141	ML420	07 0030S 0040E 010	SE
476.	MT105781142	PH020	07 0030S 0040E 003	SE
477.	MT105781143	PH127	07 0030S 0040E 012	NW
478.	MT105781144	PH128	07 0030S 0040E 001	SW
479.	MT105781145	PH129	07 0030S 0040E 001	SW
480.	MT105781146	PH130	07 0030S 0040E 012	SE
481.	MT105781147	PH131	07 0030S 0040E 012	NE
482.	MT105781148	PH132	07 0030S 0040E 012	NE
483.	MT105781149	PH133	07 0030S 0040E 001	NE
484.	MT105781150	PH134	07 0030S 0040E 001	SE
485.	MT105781151	PH135	07 0030S 0040E 012	SE
486.	MT105781152	PH136	07 0030S 0040E 012	SE
487.	MT105781153	PH137	07 0030S 0040E 012	NE
488.	MT105781154	PH138	07 0030S 0040E 012	NE
489.	MT105781155	PH139	07 0030S 0040E 001	SE
490.	MT105781156	PH140	07 0030S 0040E 001	SE
491.	MT105781157	PH141	07 0030S 0040E 012	SE
492.	MT105781158	PH142	07 0030S 0040E 012	SE
493.	MT105781159	PH143	07 0030S 0040E 012	NE
494.	MT105781160	PH144	07 0030S 0040E 012	NE
495.	MT105781161	PH145	07 0030S 0040E 001	SE
496.	MT105781162	PH146	07 0030S 0040E 001	SE
497.	MT105781163	PH147	07 0030S 0040E 013	SE
498.	MT105781164	PH148	07 0030S 0040E 013	NE
499.	MT105781165	PH149	07 0030S 0040E 012	SE
500.	MT105781166	PH150	07 0030S 0040E 012	SE
501.	MT105781167	PH151	07 0030S 0040E 012	NE
502.	MT105781168	PH152	07 0030S 0040E 012	NE
503.	MT105781169	PH153	07 0030S 0040E 001	SE
504.	MT105781170	PH154	07 0030S 0040E 001	SE
505.	MT105781171	PH155	07 0030S 0040E 013	NE
506.	MT105781172	PH156	07 0030S 0040E 012	SE
507.	MT105781173	PH157	07 0030S 0040E 012	SE
508.	MT105781174	PH158	07 0030S 0040E 012	NE
509.	MT105781175	PH159	07 0030S 0040E 012	NE
510.	MT105781176	PH160	07 0030S 0040E 001	SE
511.	MT105781177	PH161	07 0030S 0040E 001	SE
512.	MT105781178	PH162	07 0030S 0040E 012	SE
513.	MT105781179	PH163	07 0030S 0040E 012	SE

514.	MT105781180	PH164	07 0030S 0040E 012	NE
515.	MT105781181	PH165	07 0030S 0040E 012	NE
516.	MT105815338	MLK 1	07 0010S 0050E 027	SW
517.	MT105815339	MLK 2	07 0010S 0050E 027	SW
518.	MT105815340	MLK 3	07 0010S 0050E 027	SE
519.	MT105815341	MLK 4	07 0010S 0050E 027	SE
520.	MT105815342	MLK 5	07 0010S 0050E 027	SE
521.	MT105815343	MLK 6	07 0010S 0050E 027	SE
522.	MT105815344	MLK 7	07 0010S 0050E 027	SE
523.	MT105815345	MLK 8	07 0010S 0050E 027	SE
524.	MT105815346	MLK 9	07 0040S 0050E 027	SE
525.	MT105815347	MLK 10	07 0010S 0050E 027	SE
526.	MT105815348	MLK 11	07 0010S 0050E 026	SW
527.	MT105815349	MLK 12	07 0010S 0050E 026	SW
528.	MT105815350	MLK 13	07 0010S 0050E 026	SW
529.	MT105815351	MLK 14	07 0010S 0050E 026	SW
530.	MT105815352	MLK 15	07 0010S 0050E 026	SW
531.	MT105815353	MLK 16	07 0010S 0050E 026	SW
532.	MT105815354	MLK 17	07 0010S 0050E 026	SW
533.	MT105815355	MLK 18	07 0010S 0050E 026	SW
534.	MT105815356	MLK 19	07 0010S 0050E 026	SW
535.	MT105815357	MLK 20	07 0010S 0050E 026	SW
536.	MT105815358	MLK 21	07 0010S 0050E 026	SE
537.	MT105815359	MLK 22	07 0010S 0050E 026	SE
538.	MT105815360	MLK 23	07 0010S 0050E 026	SE
539.	MT105815361	MLK 24	07 0010S 0050E 026	SE
540.	MT105815362	MLK 25	07 0010S 0050E 026	SE
541.	MT105815363	MLK 26	07 0010S 0050E 026	SE
542.	MT105815364	MLK 27	07 0010S 0050E 026	SE
543.	MT105815365	MLK 28	07 0010S 0050E 026	SE
544.	MT105815366	MLK 29	07 0010S 0050E 025	SW
545.	MT105815367	MLK 30	07 0010S 0050E 025	SW
546.	MT105815453	MLK 31	07 0010S 0050E 034	NE
547.	MT105815371	MLHC 109	07 0010S 0040E 034	NE
548.	MT105815372	MLHC 110	07 0010S 0040E 034	NE
549.	MT105815373	MLHC 111	07 0010S 0040E 035	NW
550.	MT105815374	MLHC 112	07 0010S 0040E 035	NW
551.	MT105815375	MLHC 113	07 0010S 0040E 035	NW
552.	MT105815376	MLHC 114	07 0010S 0040E 035	NW
553.	MT105815377	MLHC 115	07 0010S 0040E 035	NW
554.	MT105815378	MLHC 116	07 0010S 0040E 035	NW
555.	MT105815379	MLHC 117	07 0010S 0040E 035	NE
556.	MT105815380	MLHC 118	07 0010S 0040E 035	NE

557.	MT105815381	MLHC 119	07 0010S 0040E 035	NE
558.	MT105815382	MLHC 120	07 0010S 0040E 035	NE
559.	MT105815383	MLHC 121	07 0010S 0040E 035	NE
560.	MT105815384	MLHC 122	07 0010S 0040E 035	NE
561.	MT105815385	MLHC 123	07 0010S 0040E 036	NW
562.	MT105815386	MLHC 124	07 0010S 0040E 036	NW
563.	MT105815387	MLHC 125	07 0010S 0040E 036	NW
564.	MT105815388	MLHC 126	07 0010S 0040E 036	NW
565.	MT105815389	MLHC 127	07 0010S 0040E 036	NW
566.	MT105815390	MLHC 128	07 0010S 0040E 036	NW
567.	MT105815391	MLHC 129	07 0010S 0040E 036	NW
568.	MT105815392	MLHC 130	07 0010S 0040E 036	NE
569.	MT105815393	MLHC 131	07 0010S 0040E 036	NE
570.	MT105815394	MLHC 136	07 0010S 0040E 026	SW
571.	MT105815395	MLHC 137	07 0010S 0040E 026	SW
572.	MT105815396	MLHC 138	07 0010S 0040E 026	SW
573.	MT105815397	MLHC 139	07 0010S 0040E 026	SW
574.	MT105815398	MLHC 140	07 0010S 0040E 026	SE
575.	MT105815399	MLHC 141	07 0010S 0040E 026	SE
576.	MT105815400	MLHC 142	07 0010S 0040E 026	SE
577.	MT105815401	MLHC 143	07 0010S 0040E 026	SE
578.	MT105815402	MLHC 144	07 0010S 0040E 026	SE
579.	MT105815403	MLHC 145	07 0010S 0040E 026	SE
580.	MT105815404	MLHC 146	07 0010S 0040E 026	SE
581.	MT105815405	MLHC 147	07 0010S 0040E 026	SE
582.	MT105815406	MLHC 148	07 0010S 0040E 026	SE
583.	MT105815407	MLHC 149	07 0010S 0040E 026	SE
584.	MT105815408	MLHC 150	07 0010S 0040E 025	SW
585.	MT105815409	MLHC 151	07 0010S 0040E 025	NW
586.	MT105815410	MLHC 152	07 0010S 0040E 025	SW
587.	MT105815411	MLHC 153	07 0010S 0040E 025	SW
588.	MT105815412	MLHC 154	07 0010S 0040E 025	SW
589.	MT105815413	MLHC 155	07 0010S 0040E 025	SW
590.	MT105815414	MLHC 156	07 0010S 0040E 025	SW
591.	MT105815415	MLHC 157	07 0010S 0040E 025	SW
592.	MT105815416	MLHC 158	07 0010S 0040E 025	SE
593.	MT105815417	MLHC 159	07 0010S 0040E 025	SE
594.	MT105815418	MLHC 160	07 0010S 0040E 025	SE
595.	MT105815419	MLHC 161	07 0010S 0040E 025	SE
596.	MT105815420	MLHC 162	07 0010S 0040E 026	NW
597.	MT105815421	MLHC 163	07 0010S 0040E 026	NW
598.	MT105815422	MLHC 164	07 0010S 0040E 026	NW
599.	MT105815423	MLHC 165	07 0010S 0040E 026	NW

600.	MT105815424	MLHC 166	07 0010S 0040E 026	NE
601.	MT105815425	MLHC 167	0010S 0040E 026	NE
602.	MT105815426	MLHC 168	07 0010S 0040E 026	NE
603.	MT105815427	MLHC 169	07 0010S 0040E 026	NE
604.	MT105815428	MLHC 170	07 0010S 0040E 026	NE
605.	MT105815429	MLHC 171	07 0010S 0040E 026	NE
606.	MT105815430	MLHC 172	07 0010S 0040E 026	NE
607.	MT105815431	MLHC 173	07 0010S 0040E 026	NE
608.	MT105815432	MLHC 174	07 0010S 0040E 026	NE
609.	MT105815433	MLHC 175	07 0010S 0040E 026	NE
610.	MT105815434	MLHC 176	07 0010S 0040E 025	NW
611.	MT105815435	MLHC 177	07 0010S 0040E 025	NW
612.	MT105815436	MLHC 178	07 0010S 0040E 025	NW
613.	MT105815437	MLHC 179	07 0010S 0040E 025	NW
614.	MT105815438	MLHC 180	07 0010S 0040E 025	NW
615.	MT105815439	MLHC 181	07 0010S 0040E 025	NW
616.	MT105815440	MLHC 182	07 0010S 0040E 025	NW
617.	MT105815441	MLHC 183	07 0010S 0040E 025	NW
618.	MT105815442	MLHC 184	07 0010S 0040E 025	NE
619.	MT105815443	MLHC 185	07 0010S 0040E 025	NE
620.	MT105815444	MLHC 186	07 0010S 0040E 025	NE
621.	MT105815445	MLHC 187	07 0010S 0040E 025	NE
622.	MT105815446	MLHC 188	07 0010S 0040E 023	SE
623.	MT105815447	MLHC 189	07 0010S 0040E 023	SE
624.	MT105815448	MLHC 190	07 0010S 0040E 023	SE
625.	MT105815449	MLHC 191	07 0010S 0040E 023	SE
626.	MT105815450	MLHC 192	07 0010S 0040E 024	SW
627.	MT105815451	MLHC 193	07 0010S 0040E 024	SW
628.	MT105815452	MLHC 194	07 0010S 0040E 024	SW
629.	MT105815454	MLK 32	07 0010S 0050E 034	NE
630.	MT105815455	MLK 33	07 0010S 0050E 034	NE
631.	MT105815456	MLK 34	07 0010S 0050E 034	NE
632.	MT105815457	MLK 35	07 0010S 0050E 034	NE
633.	MT105815458	MLK 36	07 0010S 0050E 034	NE
634.	MT105815459	MLK 37	07 0010S 0050E 034	NE
635.	MT105815460	MLK 38	07 0010S 0050E 035	NW
636.	MT105815461	MLK 39	07 0010S 0050E 035	NW
637.	MT105815462	MLK 40	07 0010S 0050E 035	NW
638.	MT105815463	MLK 41	07 0010S 0050E 035	NW
639.	MT105815464	MLK 42	07 0010S 0050E 035	NW
640.	MT105815465	MLK 43	07 0010S 0050E 035	NW
641.	MT105815466	MLK 44	07 0010S 0050E 035	NW
642.	MT105815467	MLK 45	07 0010S 0050E 035	NW

643.	MT105815468	MLK 46	07 0010S 0050E 035	NE
644.	MT105815469	MLK 47	07 0010S 0050E 035	NE
645.	MT105815470	MLK 48	07 0010S 0050E 035	NE
646.	MT105815471	MLK 49	07 0010S 0050E 035	NE
647.	MT105815472	MLK 50	07 0010S 0050E 035	NE
648.	MT105815473	MLK 51	07 0010S 0050E 035	NE
649.	MT105815474	MLK 52	07 0010S 0050E 035	NE
650.	MT105815475	MLK 53	07 0010S 0050E 035	NE
651.	MT105815476	MLK 54	07 0010S 0050E 035	NE
652.	MT105815477	MLK 55	07 0010S 0050E 035	NE
653.	MT105815478	MLK 56	07 0010S 0050E 036	NW
654.	MT105815479	MLK 57	07 0010S 0050E 036	NW
655.	MT105815480	MLK 58	07 0010S 0050E 036	NW
656.	MT105815481	MLK 59	07 0010S 0050E 036	NW
657.	MT105815482	MLK 60	07 0010S 0050E 036	NW
658.	MT105815483	MLK 61	07 0010S 0050E 036	NW
659.	MT105815484	MLK 62	07 0010S 0050E 036	NW
660.	MT105815485	MLK 63	07 0010S 0050E 036	NW
661.	MT105815486	MLK 64	07 0010S 0050E 035	SE
662.	MT105815487	MLK 65	07 0010S 0050E 035	SE
663.	MT105815488	MLK 66	07 0010S 0050E 035	SE
664.	MT105815489	MLK 67	07 0010S 0050E 035	SE
665.	MT105815490	MLK 68	07 0010S 0050E 035	SE
666.	MT105815491	MLK 69	07 0010S 0050E 035	SE
667.	MT105815492	MLK 70	07 0010S 0050E 035	SE
668.	MT105815493	MLK 71	07 0010S 0050E 035	SE
669.	MT105815494	MLK 72	07 0010S 0050E 036	SW
670.	MT105816367	MLC 1	07 0040S 0050E 003	NW
671.	MT105816368	MLC 2	07 0040S 0050E 003	NW
672.	MT105816369	MLC 4	07 0040S 0050E 003	NW
673.	MT105816370	MLC 6	07 0040S 0050E 003	NW
674.	MT105816371	MLC 8	07 0040S 0050E 003	NW
675.	MT105816372	MLC 10	07 0040S 0050E 003	SW
676.	MT105816373	MLC 12	07 0040S 0050E 003	SW
677.	MT105816374	MLC 14	07 0040S 0050E 003	SW
678.	MT105816375	MLC 16	07 0040S 0050E 003	SW
679.	MT105816376	MLC 17	07 0040S 0050E 003	SE
680.	MT105816377	MLC 20	07 0040S 0050E 003	SE
681.	MT105816378	MLC 21	07 0040S 0050E 003	SE
682.	MT105816379	MLC 22	07 0040S 0050E 003	SE
683.	MT105816380	MLC 24	07 0040S 0050E 010	NW
684.	MT105816381	MLC 26	07 0040S 0050E 010	NW
685.	MT105816382	MLC 28	07 0040S 0050E 010	NW

For personal use only

686.	MT105816383	MLC 30	07 0040S 0050E 010	NW
687.	MT105816384	MLC 32	07 0040S 0050E 010	NW
688.	MT105816385	MLC 34	07 0040S 0050E 010	NW
689.	MT105816386	MLC 39	07 0040S 0050E 010	NW
690.	MT105816387	MLC 40	07 0040S 0050E 010	SE
691.	MT105816388	MLC 41	07 0040S 0050E 010	NW
692.	MT105816389	MLC 42	07 0040S 0050E 010	SE
693.	MT105816390	MLC 43	07 0040S 0050E 010	NW
694.	MT105816391	MLC 44	07 0040S 0050E 010	SE
695.	MT105816392	MLC 46	07 0040S 0050E 010	NW
696.	MT105816393	MLC 47	07 0040S 0050E 010	NW
697.	MT105816394	MLC 48	07 0040S 0050E 010	SE
698.	MT105816395	MLC 51	07 0040S 0050E 015	NE
699.	MT105816396	MLC 52	07 0040S 0050E 015	NE
700.	MT105816397	MLC 54	07 0040S 0050E 015	NW
701.	MT105816398	MLC 55	07 0040S 0050E 015	NE
702.	MT105816399	MLC 56	07 0040S 0050E 015	NE
703.	MT105816400	MLC 58	07 0040S 0050E 015	NW
704.	MT105816401	MLC 60	07 0040S 0050E 015	NW
705.	MT105816402	MLC 62	07 0040S 0050E 015	NW
706.	MT105816403	MLC 64	07 0040S 0050E 015	SW
707.	MT105816404	MLC 66	07 0040S 0050E 015	SW
708.	MT105816405	MLC 68	07 0040S 0050E 015	SW
709.	MT105816406	MLC 70	07 0040S 0050E 015	SW
710.	MT105816407	MLC 72	07 0040S 0050E 022	NW
711.	MT105816408	MLC 78	07 0040S 0050E 022	NW
712.	MT105816409	MLC 80	07 0040S 0050E 022	SW
713.	MT105816410	MLC 82	07 0040S 0050E 022	SW
714.	MT105816411	MLC 84	07 0040S 0050E 022	SW
715.	MT105816412	MLC 86	07 0040S 0050E 022	SW
716.	MT105816413	MLC 88	07 0040S 0050E 022	SW
717.	MT105816414	MLC 90	07 0040S 0050E 027	NW
718.	MT105816415	MLC 92	07 0040S 0050E 027	NW
719.	MT105816416	MLC 94	0040S 0050E 027	NW
720.	MT105816417	MLC 100	07 0040S 0050E 027	SW
721.	MT105816418	MLC 102	07 0040S 0050E 027	SW
722.	MT105816419	MLC 104	07 0040S 0050E 027	SW
723.	MT105816420	MLC 106	07 0040S 0050E 027	SW
724.	MT105816421	MLC 108	07 0040S 0050E 034	NW
725.	MT105816422	MLC 110	07 0040S 0050E 034	NW
726.	MT105816423	MLC 112	07 0040S 0050E 034	NW
727.	MT105816424	MLC 114	07 0040S 0050E 034	NW
728.	MT105816425	MLC 118	07 0040S 0050E 034	SW

729.	MT105816426	MLC 122	07 0040S 0050E 034	SW
730.	MT105813118	ML400	07 0020S 0060E 011	NE
731.	MT105813119	ML401	07 0020S 0060E 011	NE
732.	MT105813120	ML402	07 0020S 0060E 011	NE
733.	MT105813121	ML403	07 0020S 0060E 012	NW
734.	MT105838822	ML404	07 0020S 0060E 011	NE
735.	MT105813122	ML405	07 0020S 0060E 011	NE
736.	MT105813123	ML406	07 0020S 0060E 011	NE
737.	MT105813124	ML407	07 0020S 0060E 011	NE
738.	MT105813125	ML408	07 0020S 0060E 011	NE
739.	MT105813126	ML409	07 0020S 0060E 011	NE
740.	MT105813127	ML410	07 0020S 0060E 011	NE
741.	MT105813128	ML411	07 0020S 0060E 011	NE
742.	MT105838823	ML420	07 0020S 0060E 012	SW
743.	MT105838824	ML421	07 0020S 0060E 012	SE
744.	MT105838825	ML422	07 0020S 0060E 011	SE
745.	MT105838826	ML423	07 0020S 0060E 011	SE
746.	MT105838827	ML424	07 0020S 0060E 011	SE
747.	MT105838828	ML425	07 0020S 0060E 011	SE
748.	MT105838829	ML426	07 0020S 0060E 011	NW
749.	MT105838830	ML427	07 0020S 0060E 011	NW
750.	MT105838831	ML428	07 0020S 0060E 011	NW
751.	MT105838832	ML429	07 0020S 0060E 011	NW
752.	MT105838833	ML430	07 0030S 0050E 07	NE
753.	MT105838834	ML431	07 0030S 0050E 07	NE
754.	MT105838835	ML432	07 0030S 0050E 07	NE
755.	MT105838836	ML433	07 0030S 0050E 08	NE
756.	MT105838837	ML434	07 0030S 0050E 08	NW
757.	MT105838838	ML435	07 0030S 0050E 07	NW
758.	MT105838839	ML436	07 0030S 0050E 07	NW
759.	MT105838840	ML437	07 0030S 0050E 07	NW
760.	MT105838841	ML438	07 0030S 0050E 07	NW
761.	MT105838842	ML439	07 0030S 0050E 07	NW
762.	MT105838843	ML440	07 0030S 0050E 07	NE
763.	MT105838844	ML441	07 0030S 0050E 07	NE
764.	MT105838845	ML442	07 0030S 0050E 07	NE

For personal use only

765.	MT105838846	ML443	07 0030S 0050E 08	NW
766.	MT105838847	ML444	07 0030S 0050E 08	NW
767.	MT105838848	ML445	07 0030S 0050E 08	NW
768.	MT105838849	ML446	07 0030S 0050E 08	NW
769.	MT105838850	ML447	07 0030S 0050E 07	NW
770.	MT105838851	ML448	07 0030S 0050E 07	NW
771.	MT105838852	ML449	07 0030S 0050E 07	NW
772.	MT105838853	ML450	07 0030S 0050E 07	NW
773.	MT105838854	ML451	07 0030S 0050E 07	NE
774.	MT105838855	ML452	07 0030S 0050E 07	NE
775.	MT105838856	ML453	07 0030S 0050E 07	NE
776.	MT105838857	ML454	07 0030S 0050E 07	SW
777.	MT105838858	ML455	07 0030S 0050E 07	SW
778.	MT105838859	ML456	07 0030S 0050E 07	SW
779.	MT105838860	ML457	07 0030S 0050E 07	SE
780.	MT105838861	ML458	07 0030S 0050E 07	SE
781.	MT105838862	ML459	07 0030S 0050E 07	SW
782.	MT105838863	ML460	07 0030S 0050E 07	SW
783.	MT105838864	ML461	07 0030S 0050E 07	SW
784.	MT105838865	ML462	07 0030S 0050E 07	SE
785.	MT105838866	ML463	07 0030S 0050E 07	SE
786.	MT105838867	ML465	07 0030S 0040E 01	NW
787.	MT105838868	ML466	07 0030S 0040E 01	NW
788.	MT105838869	ML467	07 0030S 0040E 01	NW
789.	MT105838870	ML469	07 0030S 0040E 36	SW
790.	MT105838871	ML470	07 0030S 0040E 36	SW
791.	MT105838872	ML471	07 0030S 0040E 36	SW
792.	MT105838873	ML472	07 0030S 0040E 36	SW
793.	MT105838874	ML480	07 0030S 0040E 35	SE
794.	MT105838875	ML483	07 0030S 0040E 36	SW
795.	MT105838876	ML484	07 0030S 0040E 36	SW
796.	MT105838877	ML527	07 0030S 0040E 35	SE
797.	MT105838878	ML528	07 0030S 0040E 35	SE
798.	MT105838879	ML529	07 0030S 0040E 35	SE
799.	MT105838880	ML530	07 0030S 0040E 35	SE
800.	MT105816472	MLC 175	07 0040S 0050E 022	NE
801.	MT105816473	MLC 176	07 0040S 0050E 022	NE
802.	MT105816474	MLC 177	07 0040S 0050E 022	NE
803.	MT105816475	MLC 178	07 0040S 0050E 022	NE
804.	MT105816476	MLC 180	07 0040S 0050E 022	NE
805.	MT105816477	MLC 181	07 0040S 0050E 022	NE
806.	MT105816478	MLC 182	07 0040S 0050E 022	NE
807.	MT105816479	MLC 183	07 0040S 0050E 022	SE

808.	MT105816480	MLC 184	07 0040S 0050E 022	SE
809.	MT105816481	MLC 185	07 0040S 0050E 022	SE
810.	MT105816482	MLC 186	07 0040S 0050E 022	SE
811.	MT105816483	MLC 187	07 0040S 0050E 022	SE
812.	MT105816484	MLC 188	07 0040S 0050E 022	SE
813.	MT105816485	MLC 189	07 0040S 0050E 022	SE
814.	MT105816486	MLC 190	07 0040S 0050E 022	SE
815.	MT105816487	MLC 191	07 0040S 0050E 022	SE
816.	MT105816488	MLC 192	07 0040S 0050E 022	SE
817.	MT105816489	MLC 193	07 0040S 0050E 027	NE
818.	MT105816490	MLC 194	07 0040S 0050E 027	NE
819.	MT105816491	MLC 195	07 0040S 0050E 027	NE
820.	MT105816492	MLC 196	07 0040S 0050E 027	NE
821.	MT105816493	MLC 197	07 0040S 0050E 027	NE
822.	MT105816494	MLC 198	07 0040S 0050E 027	NE
823.	MT105816495	MLC 199	07 0040S 0050E 027	NE
824.	MT105816496	MLC 200	07 0040S 0050E 027	NE
825.	MT105816497	MLC 201	07 0040S 0050E 027	NE
826.	MT105816498	MLC 202	07 0040S 0050E 027	SE
827.	MT105816499	MLC 203	07 0040S 0050E 027	SE
828.	MT105816500	MLC 204	07 0040S 0050E 027	SE
829.	MT105816501	MLC 205	07 0040S 0050E 027	SE
830.	MT105816502	MLC 206	07 0040S 0050E 027	SE
831.	MT105816503	MLC 207	07 0040S 0050E 027	SE
832.	MT105816504	MLC 208	07 0040S 0050E 027	SE
833.	MT105816505	MLC 209	07 0040S 0050E 027	SE
834.	MT105816506	MLC 210	07 0040S 0050E 027	SE
835.	MT105816507	MLC 211	07 0040S 0050E 034	NE
836.	MT105816508	MLC 212	07 0040S 0050E 034	NE
837.	MT105816509	MLC 213	07 0040S 0050E 034	NE
838.	MT105816510	MLC 214	07 0040S 0050E 034	NE
839.	MT105816511	MLC 215	07 0040S 0050E 034	NE
840.	MT105816512	MLC 216	07 0040S 0050E 034	NE
841.	MT105816513	MLC 217	07 0040S 0050E 034	NE
842.	MT105816514	MLC 218	07 0040S 0050E 034	NE
843.	MT105816515	MLC 219	07 0040S 0050E 034	SE
844.	MT105816516	MLC 220	07 0040S 0050E 034	SE
845.	MT105816517	MLC 221	07 0040S 0050E 034	SE
846.	MT105816518	MLC 222	07 0040S 0050E 034	SE
847.	MT105816519	MLC 223	07 0040S 0050E 034	SE
848.	MT105816520	MLC 224	07 0040S 0050E 034	SE
849.	MT105816521	MLC 225	07 0040S 0050E 034	SE
850.	MT105816522	MLC 226	07 0040S 0050E 034	SE

For personal use only

851.	MT105816523	MLC 227	07 0050S 0050E 003	NE
852.	MT105816524	MLC 228	07 0050S 0050E 003	NE
853.	MT105816525	MLC 229	07 0050S 0050E 003	NE
854.	MT105816526	MLC 230	07 0050S 0050E 003	NE
855.	MT105816527	MLC 231	07 0050S 0050E 003	NE
856.	MT105816528	MLC 232	07 0050S 0050E 003	NE
857.	MT105816529	MLC 233	07 0050S 0050E 003	NE
858.	MT105816530	MLC 234	07 0050S 0050E 003	NE
859.	MT105816426	MLC 122	07 0040S 0050E 034	SW
860.	MT105816427	MLC 124	07 0050S 0050E 003	NW
861.	MT105816428	MLC 126	07 0050S 0050E 003	NE
862.	MT105816429	MLC 128	07 0050S 0050E 003	NE
863.	MT105816430	MLC 130	07 0050S 0050E 003	NE
864.	MT105816431	MLC 132	07 0050S 0050E 003	NE
865.	MT105816432	MLC 134	07 0050S 0050E 003	SE
866.	MT105816433	MLC 136	07 0050S 0050E 003	SW
867.	MT105816434	MLC 137	07 0050S 0050E 003	SE
868.	MT105816435	MLC 138	07 0050S 0050E 003	SE
869.	MT105816436	MLC 139	07 0050S 0050E 003	SW
870.	MT105816437	MLC 140	07 0050S 0050E 003	SE
871.	MT105816438	MLC 141	07 0050S 0050E 003	SE
872.	MT105816439	MLC 142	07 0050S 0050E 003	SE
873.	MT105816440	MLC 143	07 0050S 0050E 010	NE
874.	MT105816441	MLC 144	07 0050S 0050E 010	NE
875.	MT105816442	MLC 145	07 0050S 0050E 010	NW
876.	MT105816443	MLC 146	07 0050S 0050E 010	NE
877.	MT105816444	MLC 147	07 0050S 0050E 010	NE
878.	MT105816445	MLC 148	07 0050S 0050E 010	NE
879.	MT105816446	MLC 149	07 0050S 0050E 010	NE
880.	MT105816447	MLC 150	07 0050S 0050E 010	NE
881.	MT105816448	MLC 151	07 0050S 0050E 010	NE
882.	MT105816449	MLC 152	07 0050S 0050E 010	NE
883.	MT105816450	MLC 153	07 0050S 0050E 010	SE
884.	MT105816451	MLC 154	07 0050S 0050E 010	SE
885.	MT105816452	MLC 155	07 0050S 0050E 010	SE
886.	MT105816453	MLC 156	07 0050S 0050E 010	SE
887.	MT105816454	MLC 157	07 0050S 0050E 010	SE
888.	MT105816455	MLC 158	07 0050S 0050E 010	SE
889.	MT105816456	MLC 159	07 0050S 0050E 010	SE
890.	MT105816457	MLC 160	07 0050S 0050E 010	SE
891.	MT105816458	MLC 161	07 0040S 0050E 015	NE
892.	MT105816459	MLC 162	07 0040S 0050E 015	NE
893.	MT105816460	MLC 163	07 0040S 0050E 015	NE

894.	MT105816461	MLC 164	07 0040S 0050E 015	NE
895.	MT105816462	MLC 165	07 0040S 0050E 015	NE
896.	MT105816463	MLC 166	07 0040S 0050E 015	SE
897.	MT105816464	MLC 167	07 0040S 0050E 015	SE
898.	MT105816465	MLC 168	07 0040S 0050E 015	SE
899.	MT105816466	MLC 169	07 0040S 0050E 015	SE
900.	MT105816467	MLC 170	07 0040S 0050E 015	SE
901.	MT105816468	MLC 171	07 0040S 0050E 015	SE
902.	MT105816469	MLC 172	07 0040S 0050E 015	SE
903.	MT105816470	MLC 173	07 0040S 0050E 015	SE
904.	MT105816471	MLC 174	07 0040S 0050E 015	SE
905.	MT105838405	MLHC 1	07 002S 004E 004	NE
906.	MT105838406	MLHC 2	07 002S 004E 004	NE
907.	MT105838407	MLHC 3	07 002S 004E 004	NE
908.	MT105838408	MLHC 4	07 002S 004E 004	NE
909.	MT105838409	MLHC 5	07 002S 004E 004	NE
910.	MT105838410	MLHC 6	07 002S 004E 004	NE
911.	MT105838411	MLHC 7	07 002S 004E 004	NE
912.	MT105838412	MLHC 8	07 002S 004E 004	NE
913.	MT105838413	MLHC 9	07 002S 004E 003	NW
914.	MT105838414	MLHC 10	07 002S 004E 003	NW
915.	MT105838415	MLHC 11	07 002S 004E 003	NW
916.	MT105838416	MLHC 12	07 002S 004E 003	NW
917.	MT105838417	MLHC 13	07 002S 004E 003	NW
918.	MT105838418	MLHC 14	07 002S 004E 003	NW
919.	MT105838419	MLHC 15	07 002S 004E 003	NW
920.	MT105838420	MLHC 16	07 002S 004E 003	NE
921.	MT105838421	MLHC 17	07 002S 004E 003	NE
922.	MT105838422	MLHC 18	07 002S 004E 003	NE
923.	MT105838423	MLHC 19	07 002S 004E 003	NE
924.	MT105838424	MLHC 20	07 002S 004E 003	NE
925.	MT105838425	MLHC 21	07 002S 004E 003	NE
926.	MT105838426	MLHC 22	07 002S 004E 003	NE
927.	MT105838427	MLHC 23	07 002S 004E 003	NE
928.	MT105838428	MLHC 24	07 002S 004E 003	NE
929.	MT105838429	MLHC 25	07 002S 004E 002	NW
930.	MT105838430	MLHC 26	07 002S 004E 003	NE
931.	MT105838431	MLHC 27	07 002S 004E 002	NW
932.	MT105838432	MLHC 28	07 002S 004E 002	NW
933.	MT105838433	MLHC 29	07 002S 004E 002	NW
934.	MT105838434	MLHC 30	07 002S 004E 002	NW
935.	MT105838435	MLHC 31	07 002S 004E 002	NW
936.	MT105838436	MLHC 32	07 002S 004E 002	NW

937.	MT105838437	MLHC 33	07 002S 004E 003	SE
938.	MT105838438	MLHC 34	07 002S 004E 010	SW
939.	MT105838439	MLHC 35	07 002S 004E 010	SW
940.	MT105838440	MLHC 36	07 002S 004E 010	SE
941.	MT105838441	MLHC 39	07 002S 004E 004	SE
942.	MT105838442	MLHC 40	07 002S 004E 004	SE
943.	MT105838443	MLHC 41	07 002S 004E 004	SE
944.	MT105838444	MLHC 42	07 002S 004E 004	SE
945.	MT105838445	MLHC 43	07 002S 004E 004	SE
946.	MT105838446	MLHC 44	07 002S 004E 004	SE
947.	MT105838447	MLHC 45	07 002S 004E 004	SE
948.	MT105838448	MLHC 46	07 002S 004E 003	SW
949.	MT105838449	MLHC 47	07 002S 004E 003	SW
950.	MT105838450	MLHC 48	07 002S 004E 003	SW
951.	MT105838451	MLHC 49	07 002S 004E 003	SW
952.	MT105838452	MLHC 50	07 002S 004E 003	SW
953.	MT105838453	MLHC 51	07 002S 004E 003	SW
954.	MT105838454	MLHC 52	07 002S 004E 003	SW
955.	MT105838455	MLHC 53	07 002S 004E 003	SW
956.	MT105838456	MLHC 54	07 002S 004E 003	SE
957.	MT105838457	MLHC 55	07 002S 004E 003	SE
958.	MT105838458	MLHC 56	07 002S 004E 003	SE
959.	MT105838459	MLHC 57	07 002S 004E 003	SE
960.	MT105838460	MLHC 58	07 002S 004E 003	SE
961.	MT105838461	MLHC 59	07 002S 004E 003	SE
962.	MT105838462	MLHC 60	07 002S 004E 003	SE
963.	MT105838463	MLHC 67	07 002S 004E 009	NE
964.	MT105838464	MLHC 68	07 002S 004E 009	NE
965.	MT105838465	MLHC 69	07 002S 004E 009	NE
966.	MT105838466	MLHC 70	07 002S 004E 010	NW
967.	MT105838467	MLHC 71	07 002S 004E 010	NW
968.	MT105838468	MLHC 72	07 002S 004E 010	NW
969.	MT105838469	MLHC 73	07 002S 004E 010	NW
970.	MT105838470	MLHC 74	07 002S 004E 010	NW
971.	MT105838471	MLHC 75	07 002S 004E 010	NW
972.	MT105838472	MLHC 76	07 002S 004E 010	NW
973.	MT105838473	MLHC 77	07 002S 004E 010	NW
974.	MT105838474	MLHC 78	07 002S 004E 010	NW
975.	MT105838475	MLHC 79	07 002S 004E 010	NE
976.	MT105838476	MLHC 80	07 002S 004E 010	NE
977.	MT105838477	MLHC 81	07 002S 004E 010	NE
978.	MT105838478	MLHC 82	07 002S 004E 010	NE
979.	MT105838479	MLHC 87	07 002S 004E 010	NW

980.	MT105838480	MLHC 97	07 002S 004E 035	SW
981.	MT105838481	MLHC 98	07 002S 004E 035	SW
982.	MT105838482	MLHC 99	07 002S 004E 035	SW
983.	MT105838483	MLHC 100	07 002S 004E 035	SE
984.	MT105838484	MLHC 101	07 002S 004E 035	SE
985.	MT105838485	MLHC 102	07 002S 004E 035	SE
986.	MT105838486	MLHC 103	07 002S 004E 035	SE
987.	MT105838487	MLHC 104	07 002S 004E 035	SE
988.	MT105838488	MLHC 105	07 002S 004E 036	SW
989.	MT105838489	MLHC 106	07 002S 004E 036	SW
990.	MT105838490	MLHC 107	07 002S 004E 036	SW
991.	MT105838491	MLHC 108	07 002S 004E 036	SW
992.	MT105838492	MLHC 132	07 002S 004E 026	SW
993.	MT105838493	MLHC 133	07 002S 004E 026	SW
994.	MT105838494	MLHC 134	07 002S 004E 026	SW
995.	MT105838495	MLHC 135	07 002S 004E 026	SW

Appendix 5B

Mining exploration entity or oil and gas exploration entity quarterly cash flow report

Name of entity

Rapid Critical Metals Limited

ABN

75 649 292 080

Quarter ended ("current quarter")

30 September 2025

Consolidated statement of cash flows	Current quarter \$A'000	Year to date (9 months) \$A'000
1. Cash flows from operating activities		
1.1 Receipts from customers		
1.2 Payments for		
(a) exploration & evaluation		
(b) development		
(c) production		
(d) staff costs	(28)	(98)
(e) administration and corporate costs	(1,117)	(2,143)
1.3 Dividends received (see note 3)		
1.4 Interest received		
1.5 Interest and other costs of finance paid		
1.6 Income taxes paid		
1.7 Government grants and tax incentives		
1.8 Other (provide details if material)		
1.9 Net cash from / (used in) operating activities	(1,145)	(2,241)

2. Cash flows from investing activities		
2.1 Payments to acquire or for:		
(a) entities	(3,850)	(3,850)
(b) tenements	(90)	(329)
(c) property, plant and equipment	(99)	(99)
(d) exploration & evaluation	(624)	(886)
(e) investments		
(f) other non-current assets		

For personal use only

Mining exploration entity or oil and gas exploration entity quarterly cash flow report

Consolidated statement of cash flows		Current quarter \$A'000	Year to date (9 months) \$A'000
2.2	Proceeds from the disposal of:		
	(a) entities		
	(b) tenements	73	73
	(c) property, plant and equipment		
	(d) investments		
	(e) other non-current assets		
2.3	Cash flows from loans to other entities		
2.4	Dividends received (see note 3)		
2.5	Other (provide details if material)		(286)
2.6	Net cash from / (used in) investing activities	(4,590)	(5,377)
2.5 Other relates to \$160,000 of transactions costs incurred in relation to the acquisition of New South Wales Silver projects. In the March quarter it \$126,000 of costs incurred in relation to the acquisition of Midwest Lithium Limited.			
3.	Cash flows from financing activities		
3.1	Proceeds from issues of equity securities (excluding convertible debt securities)	15,590	17,590
3.2	Proceeds from issue of convertible debt securities		
3.3	Proceeds from exercise of options		
3.4	Transaction costs related to issues of equity securities or convertible debt securities	(1,161)	(1,497)
3.5	Proceeds from borrowings		
3.6	Repayment of borrowings		
3.7	Transaction costs related to loans and borrowings		
3.8	Dividends paid		
3.9	Other (provide details if material)		
3.10	Net cash from / (used in) financing activities	14,429	16,093
4.	Net increase / (decrease) in cash and cash equivalents for the period		
4.1	Cash and cash equivalents at beginning of period	142	376
4.2	Net cash from / (used in) operating activities (item 1.9 above)	(1,145)	(2,241)
4.3	Net cash from / (used in) investing activities (item 2.6 above)	(4,590)	(5,377)

Mining exploration entity or oil and gas exploration entity quarterly cash flow report

Consolidated statement of cash flows		Current quarter \$A'000	Year to date (9 months) \$A'000
4.4	Net cash from / (used in) financing activities (item 3.10 above)	14,429	16,093
4.5	Effect of movement in exchange rates on cash held	(1)	(16)
4.6	Cash and cash equivalents at end of period	8,835	8,835

5.	Reconciliation of cash and cash equivalents at the end of the quarter (as shown in the consolidated statement of cash flows) to the related items in the accounts	Current quarter \$A'000	Previous quarter \$A'000
5.1	Bank balances	8,835	142
5.2	Call deposits		
5.3	Bank overdrafts		
5.4	Other (provide details)		
5.5	Cash and cash equivalents at end of quarter (should equal item 4.6 above)	8,835	142

6.	Payments to related parties of the entity and their associates	Current quarter \$A'000
6.1	Aggregate amount of payments to related parties and their associates included in item 1	574
6.2	Aggregate amount of payments to related parties and their associates included in item 2	

Note: if any amounts are shown in items 6.1 or 6.2, your quarterly activity report must include a description of, and an explanation for, such payments.

6.1 Includes payment of directors' fee. Payments this quarter include settlement of historical deferred fees and termination payments.

Mining exploration entity or oil and gas exploration entity quarterly cash flow report

7. Financing facilities <i>Note: the term "facility" includes all forms of financing arrangements available to the entity. Add notes as necessary for an understanding of the sources of finance available to the entity.</i>	Total facility amount at quarter end \$A'000	Amount drawn at quarter end \$A'000
7.1 Loan facilities		
7.2 Credit standby arrangements		
7.3 Other (please specify)	578	578
7.4 Total financing facilities		
7.5 Unused financing facilities available at quarter end		
7.6 Include in the box below a description of each facility above, including the lender, interest rate, maturity date and whether it is secured or unsecured. If any additional financing facilities have been entered into or are proposed to be entered into after quarter end, include a note providing details of those facilities as well.		

The company has convertible notes on issue with a total principal amount of US\$379,500. These notes have a conversion price of AU\$0.015. The notes mature on 4 November 2026. Interest is charged at 90 calendar day average Secured Overnight Financing Rate (SOFR), administered and published by the Federal Reserve Bank of New York, as at the issue date of the Notes.

8. Estimated cash available for future operating activities	\$A'000
8.1 Net cash from / (used in) operating activities (item 1.9)	(1,145)
8.2 (Payments for exploration & evaluation classified as investing activities) (item 2.1(d))	(624)
8.3 Total relevant outgoings (item 8.1 + item 8.2)	(1,769)
8.4 Cash and cash equivalents at quarter end (item 4.6)	8,835
8.5 Unused finance facilities available at quarter end (item 7.5)	-
8.6 Total available funding (item 8.4 + item 8.5)	8,835
8.7 Estimated quarters of funding available (item 8.6 divided by item 8.3)	4.99
<i>Note: if the entity has reported positive relevant outgoings (ie a net cash inflow) in item 8.3, answer item 8.7 as "N/A". Otherwise, a figure for the estimated quarters of funding available must be included in item 8.7.</i>	
8.8 If item 8.7 is less than 2 quarters, please provide answers to the following questions:	
8.8.1 Does the entity expect that it will continue to have the current level of net operating cash flows for the time being and, if not, why not?	
Answer: N/A	
8.8.2 Has the entity taken any steps, or does it propose to take any steps, to raise further cash to fund its operations and, if so, what are those steps and how likely does it believe that they will be successful?	
Answer: N/A	
8.8.3 Does the entity expect to be able to continue its operations and to meet its business objectives and, if so, on what basis?	
Answer: N/A	
<i>Note: where item 8.7 is less than 2 quarters, all of questions 8.8.1, 8.8.2 and 8.8.3 above must be answered.</i>	

Compliance statement

- 1 This statement has been prepared in accordance with accounting standards and policies which comply with Listing Rule 19.11A.
- 2 This statement gives a true and fair view of the matters disclosed.

28 October 2025

Date:

The Board of Rapid Critical Metals Limited

Authorised by:

(Name of body or officer authorising release – see note 4)

Notes

1. This quarterly cash flow report and the accompanying activity report provide a basis for informing the market about the entity's activities for the past quarter, how they have been financed and the effect this has had on its cash position. An entity that wishes to disclose additional information over and above the minimum required under the Listing Rules is encouraged to do so.
2. If this quarterly cash flow report has been prepared in accordance with Australian Accounting Standards, the definitions in, and provisions of, *AASB 6: Exploration for and Evaluation of Mineral Resources* and *AASB 107: Statement of Cash Flows* apply to this report. If this quarterly cash flow report has been prepared in accordance with other accounting standards agreed by ASX pursuant to Listing Rule 19.11A, the corresponding equivalent standards apply to this report.
3. Dividends received may be classified either as cash flows from operating activities or cash flows from investing activities, depending on the accounting policy of the entity.
4. If this report has been authorised for release to the market by your board of directors, you can insert here: "By the board". If it has been authorised for release to the market by a committee of your board of directors, you can insert here: "By the [name of board committee – eg Audit and Risk Committee]". If it has been authorised for release to the market by a disclosure committee, you can insert here: "By the Disclosure Committee".
5. If this report has been authorised for release to the market by your board of directors and you wish to hold yourself out as complying with recommendation 4.2 of the ASX Corporate Governance Council's *Corporate Governance Principles and Recommendations*, the board should have received a declaration from its CEO and CFO that, in their opinion, the financial records of the entity have been properly maintained, that this report complies with the appropriate accounting standards and gives a true and fair view of the cash flows of the entity, and that their opinion has been formed on the basis of a sound system of risk management and internal control which is operating effectively.