

ASX Announcement 3 November 2025

# Extensive RC Drilling Underway at Leonora South High-Priority Prospects

## Highlights

- ~3,000m reverse circulation (RC) drilling program has commenced at multiple prospects across the Leonora South Gold Project.
- Program will test for extensions of the high-grade mineralisation along strike and at depth at Eclipse.
- Program follows up on significant July 2025 intercepts at Eclipse including 14m @ 7.49 g/t Au from 12m (NIC017)<sup>1</sup>.
- Program also includes drilling at several underexplored prospects, including a 2km-long line of historical workings on M40/56.
- Drilling is expected to take 2-3 weeks, with assays to follow.
- Program to be followed by a 4,000m aircore at the Jessop Creek and Whistler highlighting a strong exploration pipeline.

**GoldArc Resources Ltd (ASX:GA8) ('GoldArc' or the 'Company')** is pleased to announce the commencement of an extensive Reverse Circulation (RC) drill program across multiple high-priority prospect at its Leonora South Gold Project near Kookynie, Western Australia.

The program has been designed to follow-up extensional drilling at the highly prospective Eclipse Prospect where the Company is targeting a maiden JORC Mineral Resource Estimate. Additionally, drilling has also been planned to test multiple underexplored prospects for new gold discoveries, including, Whistler, Woodpecker South, Euroa, La Trobe and Pirie.

### GoldArc Managing Director, Paul Stephen commented:

*"We are thrilled to have the rig spinning at Leonora South. Our focus is two-fold: aggressively drilling Eclipse towards a maiden JORC resource following our high-grade hits in July and simultaneously testing our pipeline of exciting new discovery targets. We see significant opportunities across the Leonora South Gold Project and look forward to keeping the market updated as results become available."*

<sup>1</sup> ASX Announcement "Asra Hits 14m at 7.49 g/t Gold Near Surface at Eclipse" dated 19<sup>th</sup> August 2025

**ASX:GA8**

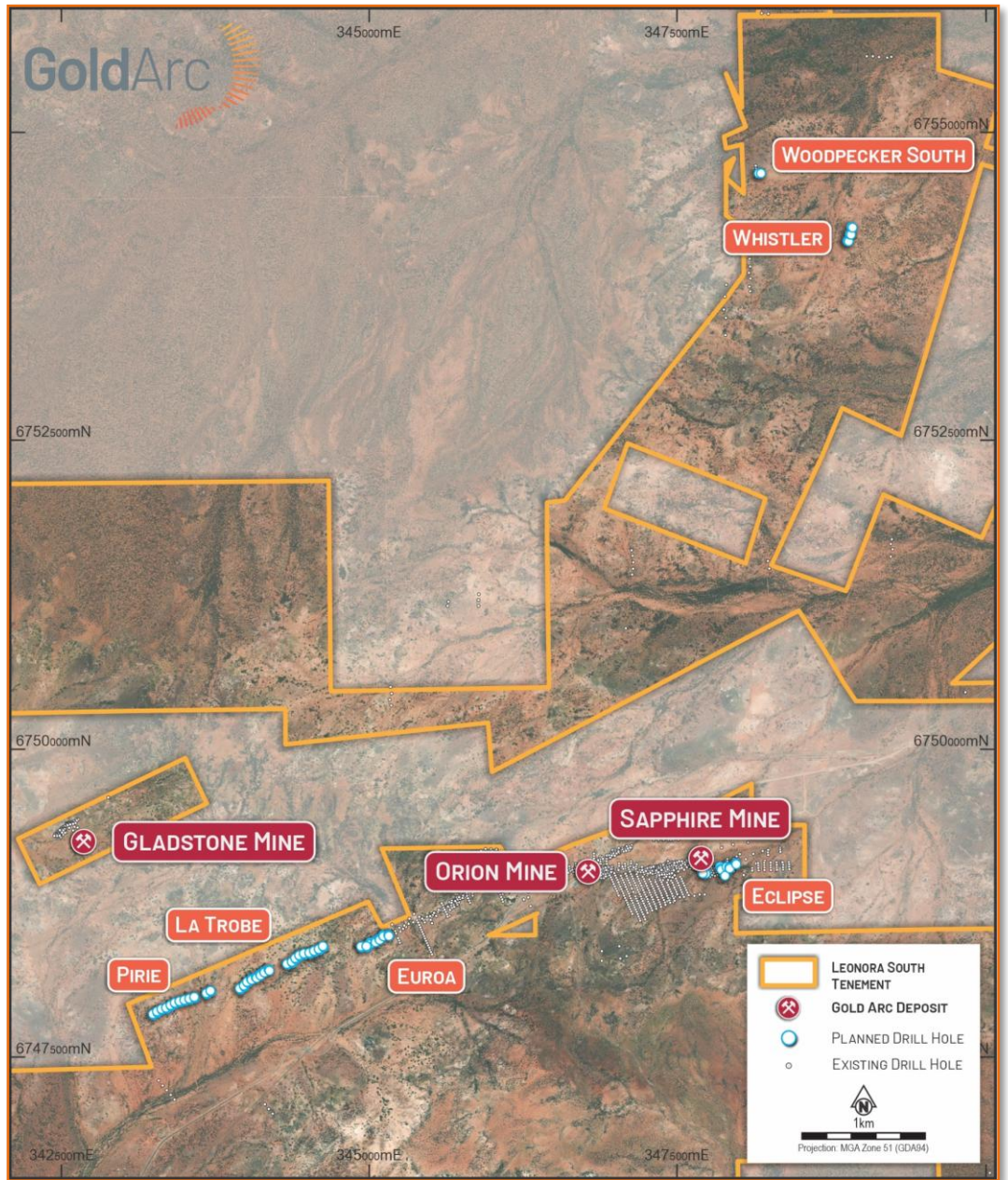
GoldArc Resources

goldarcres.com.au

104 Colin Street  
West Perth WA 6005

+618 9420 8208





**Figure 1 – Proposed RC Drilling at Leonora South**

**ASX:GA8**

**GoldArc Resources**

goldarcres.com.au

104 Colin Street  
West Perth WA 6005

+618 9420 8208





### Eclipse Prospect

The planned program at the Eclipse Prospect is designed to test for down-plunge and strike extensions to the known mineralisation. The drilling builds on the success of the July 2025 program, which confirmed a high-grade gold system. Data from the program will be used to develop a comprehensive geological model, with the goal of defining a maiden JORC Mineral Resource Estimate.

Standout intercepts from the July program included<sup>2</sup>:

- **14m at 7.49 g/t Au** from 12m in hole NIC017
- **9m at 2.84 g/t Au** from 34m in hole NIC018
- **2m at 7.50 g/t Au** from 88m in hole NIC023
- **6m at 3.14 g/t Au** from 60m in hole NIC024
- **4m at 5.20 g/t Au** from 78m in hole NIC034
- **5m at 3.40 g/t Au** from 35m in hole NIC037

### Regional Prospects

The broader program will test multiple underexplored prospects

**Whistler and Woodpecker South Prospects:** This program will be the first significant drilling at these prospects, testing historic workings along with validating historic drilling intercepts.

**Other High-Priority Prospects:** Drilling will also test targets at:

- Euroa Prospect
- La Trobe East Prospect
- La Trobe Prospect
- Pirie Prospect

**ASX:GA8**

**GoldArc Resources**

goldarcres.com.au

104 Colin Street  
West Perth WA 6005

+61 8 9420 8208

<sup>2</sup> ASX Announcement "Gold System Confirmed at Eclipse and Challenge Prospects" dated 3<sup>rd</sup> October 2025



**ASX:GA8**

**GoldArc Resources**

goldarcres.com.au

104 Colin Street  
West Perth WA 6005

+618 9420 8208



**Figure 2 – Drilling at Woodpecker South Prospect**

### **Upcoming Program**

Following completion of this RC program, a ~4,000m aircore (AC) drilling program is scheduled to commence at the Jessop Creek and Whistler Target area.

**- ENDS -**

### **Investors**

**Paul Stephen**

Managing Director

GoldArc Resources Limited

[info@goldarcres.com.au](mailto:info@goldarcres.com.au)

### **Investor Relations**

**Madeline Howson**

Investor Relations

Discover Investor Relations

[madeline@discover.com.au](mailto:madeline@discover.com.au)

### Forward Looking Statements Disclaimer

This announcement contains certain “forward-looking statements” and comments about future matters. Forward-looking statements can generally be identified by the use of forward-looking words such as, “expect”, “anticipate”, “likely”, “intend”, “should”, “estimate”, “target”, “outlook”, and other similar expressions and include, but are not limited to, indications of, and guidance or outlook on, future events, growth opportunities, exploration activities or the financial position or performance of the Company. You are cautioned not to place undue reliance on forward-looking statements. Any such statements, opinions and estimates in this release speak only as of the date hereof, are preliminary views and are based on assumptions and contingencies subject to change without notice. Forward-looking statements are provided as a general guide only. There can be no assurance that actual outcomes will not differ materially from these forward-looking statements. Any such forward-looking statement also inherently involves known and unknown risks, uncertainties and other factors and may involve significant elements of subjective judgement and assumptions that may cause actual results, performance and achievements to differ. Except as required by law the Company undertakes no obligation to finalise, check, supplement, revise or update forward-looking statements in the future, regardless of whether new information, future events or results or other factors affect the information contained in this announcement.

### Competent Persons Statement

The information in this report as it relates to exploration results and geology is based on and fairly represents, information and supporting documentation that was compiled by Mr. Ziggy Lubieniecki, who is a director, consultant and shareholder of the Company. Mr. Lubieniecki has sufficient experience which is relevant to the styles of mineralisation and types of deposit under consideration and to the activities which he is undertaking to qualify as a Competent Person as defined in the 2012 Edition of the Australasian Code for Reporting of Exploration Results, Mineral Resources and Ore Reserves'. Mr. Lubieniecki consents to the inclusion in the report of the matters based on the information in the form and context in which it appears.

The information in this announcement that relates to the Orion-Sapphire Mineral Resources is contained in the ASX announcements released on 28 May 2024. The information in this announcement that relates to the gold Mineral Resources for the Mt Stirling Project is contained in the ASX announcements released on 25 February 2019, 29 January 2020 and 5 September 2022. The Company confirms that it is not aware of any new information or data that materially affects the information in the relevant market announcements, and that all material assumptions and technical parameters underpinning the estimates in the relevant announcement continue to apply and have not materially changed. that the Company confirms that the form and context in which the Competent Persons findings are presented have not been materially modified from the original announcements.

**ASX:GA8**

**GoldArc Resources**

goldarcres.com.au

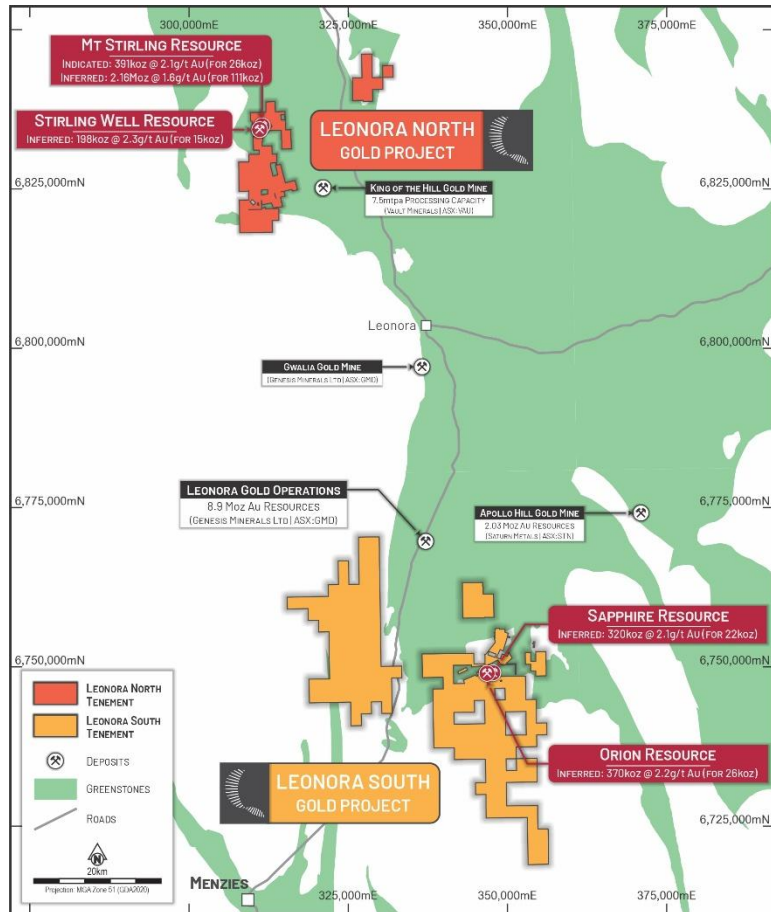
104 Colin Street  
West Perth WA 6005

+61 8 9420 8208



### About GoldArc Resources

**GoldArc Resources Limited (ASX:GA8)** is a Western Australian focused mineral exploration company with a portfolio of highly prospective gold projects located in the world-class Leonora and Kookynie districts of the Eastern Goldfields. GoldArc's strategy is focused on growing its existing 200,000oz JORC resource base and making new, large-scale discoveries through a disciplined and systematic approach to exploration.



### GoldArc Resources Total JORC Mineral Resources

GoldArc Gold Projects	Category	Tonnes	Gold Grade (g/t Au)	Gold Ounces
Leonora North - Mt Stirling	Indicated	391,000	2.1	26,000
	Inferred	2,158,000	1.6	111,000
Leonora North - Stirling Well	Inferred	198,000	2.3	15,000
Leonora South - Orion	Inferred	370,000	2.2	26,409
Leonora South - Sapphire	Inferred	320,000	2.1	21,605
<b>Total</b>		<b>3,437,000</b>	<b>1.82</b>	<b>200,064</b>

**ASX:GA8**

GoldArc Resources

goldarcres.com.au

104 Colin Street  
West Perth WA 6005

+61 8 9420 8208

