



4th November 2025

McLaren Minerals Identifies Prospective Second Shoreline Adjacent to Existing Resource

Highlights

- **Identification of further exploration potential within current tenements**
- **Historical drilling confirmed mineralising sediments close to surface – never followed up**
- **Phase 1 drilling interpretation confirms possible extension prospect east of main mineralising sediments**
- **High prospectivity due to low drilling density within the same RL tolerance to existing known resource limits.**

McLaren Minerals Limited (ASX: MML) (“McLaren” or “Company” is pleased to announce the identification of a potential second shoreline displaying mineralisation within historical drilling data, located immediately east of the Indicated Resource currently under assessment for development at the McLaren Titanium Project in Western Australia.

The discovery of this prospective feature within McLaren’s existing tenement package presents a significant opportunity for additional resource growth and project upside. Preliminary interpretation suggests the mineralisation may be associated with an older, lower shoreline horizon developed within the same sedimentary sequence that hosts the current resource.

The target’s position within the lower sedimentary units of the established shoreline sequence strengthens the current geological model and supports the potential for additional mineralisation. This prospective horizon appears to be hosted within sedimentary units identified beneath the historically defined deposit, first recognised during the Phase 1 drilling program in 2025.

Simon Finnis, Managing Director, commented:

“We already knew McLaren was a large deposit but the geological interpretation indicating other shorelines are present in the vicinity opens up significant opportunities for further, and different mineralisation.

We are looking forward to testing these theories with the drill bit when we move into the next phase at McLaren.”

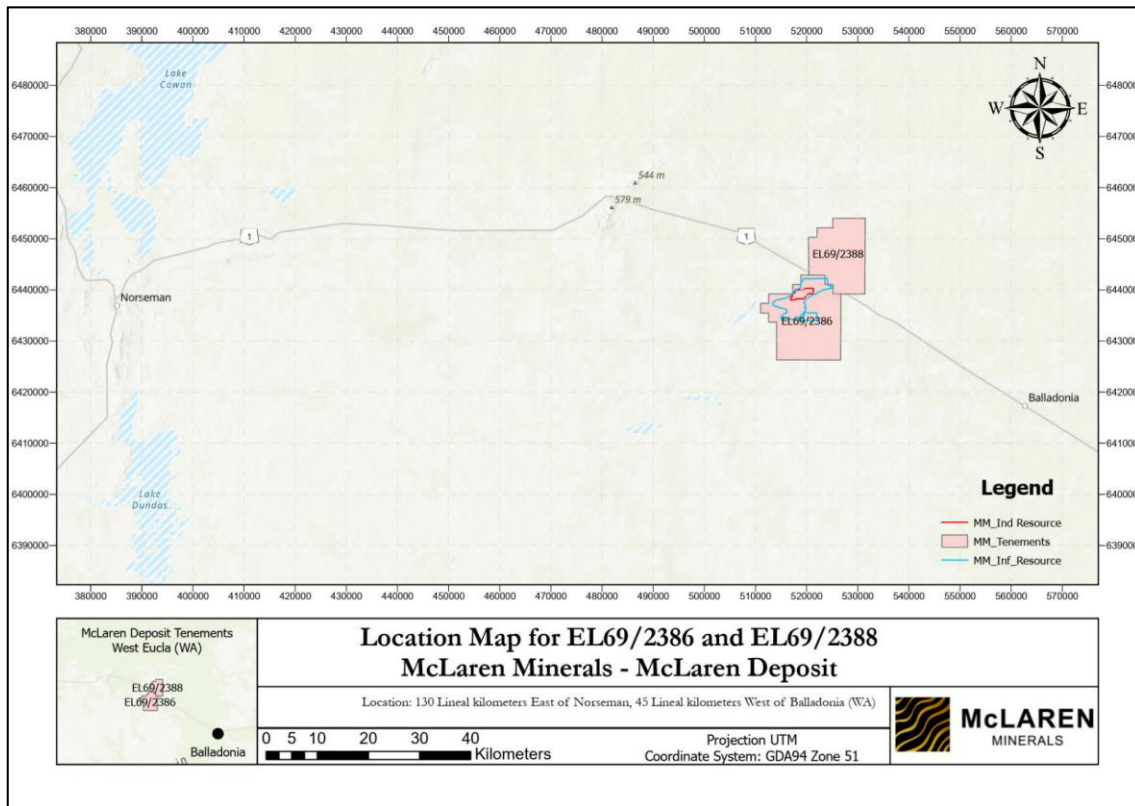


Figure 1: Location map displaying EL69/2386 and EL69/2388 tenement holdings, Indicated and Inferred Resources of McLaren Minerals West Eucla Project, WA.

Ongoing Project Development

McLaren Minerals recently reported on the exploration drilling and metallurgical studies completed as part of the Phase 1 Air Core drilling program at the McLaren Titanium Project. The project is located approximately 140 kilometres east of Norseman and 40 kilometres west of Balladonia in Western Australia, and hosts extensive titanium-bearing sand mineralisation.

The current Mineral Resource Estimate (“MRE”) stands at 280 million tonnes grading 4.8% heavy minerals (“HM”), comprising both Indicated and Inferred categories (see below). These results continue to demonstrate the scale and potential of the McLaren Titanium Project as a significant emerging heavy mineral sands development in Western Australia.

Follow-up evaluation and drill planning are now underway to confirm the extent and tenor of mineralisation identified to the north-east and south west of the known Resource as well as across this newly defined target area. Results from the next phase of work are expected to guide future resource expansion and project development activities.

Next Steps

- Integrate new geological data into the existing 3D model to refine the resource framework.
- Finalise drill program design to test the newly identified lower shoreline horizon.



About the McLaren Deposit

McLaren Minerals Limited (ASX: MML) is an Australian mineral exploration and development company focused on advancing the **McLaren Titanium Project** in Western Australia. The Project hosts a large-scale titanium-bearing mineral sands system. McLaren is committed to advancing responsible exploration and sustainable resource development to support Australia's critical minerals sector.

Prospective Target Adjacent McLaren Deposit

Recent interpretation and stratigraphic modelling of the McLaren Deposit have highlighted an untested feature of interest located immediately east of the current mineralised zone. This area is considered highly prospective, as it may represent an older, lower shoreline horizon developed within the same sedimentary sequence that hosts the existing mineralisation.

With the review of historical drilling data now complete, the project team has defined a clear target for inclusion in the the next phase of exploratory drilling. The target's position within the lower sedimentary units of the established shoreline sequence strengthens the current geological model and supports the potential for additional mineralisation. This prospective horizon appears to be hosted within sedimentary units identified beneath the historically defined deposit, first recognised during the Phase 1 drilling program in 2025.

The second shoreline position exhibits notable mineralisation in the southern extent, as indicated by widely spaced and shallow historical drilling. Toward the north, the interpreted strike aligns with favourable topographic features within an area that remains untested by drilling, highlighting additional exploration potential. (Historical AC Holes associated with shoreline identification reported in Appendix 1 Table)

Furthermore, historical hand-auger drilling has provided valuable geological information indicating that the newly defined target area hosts sedimentary units of interest in locations that have not yet been tested at depth. The presence of granitic rises to the western limits of the target generated, implies the development of sedimentary marine units draping to the upper limits of a shoreline feature. The granitic units observed are proposed to form the accumulation entrapment feature associated with the subsequent lower marine units targeted.

Cautionary Note:

The drill holes presented in Appendix 1 represent historical drilling data that was acquired by McLaren Minerals at the time of project purchase. These records are derived from entries within the verified EuclaWestDrilling database, which consolidates all historical drilling activities associated with the McLaren Project tenement holdings and was originally compiled by ERM Consulting.

The data was collected during 2009 and is considered to be of exploratory, target-generation nature only. It does not inform or contribute to any current Mineral Resource or Ore Reserve estimate. Rather, it serves as a geological reference to assist in refining future drilling strategies. McLaren Minerals plans to validate this information through confirmatory and infill drilling during the next planned drilling program (scheduled for completion in H1 2026).

The information presented in Appendix 1 has been retained in its original form from the historical source, with no modification to the underlying assay or interval data. The only



calculation applied relates to the aggregation of intervals containing $\geq 2\%$ HM (Heavy Minerals), expressed as an average over the total intercept length (as detailed in Table 1).

It is the Competent Person's view that the reported intervals provide useful geological insight into sedimentary sequences interpreted as prospective within the McLaren Project area. The data reliability is considered adequate for this purpose, though it remains insufficient for resource estimation until further validation drilling is completed.

It is reasonably assumed that the 2009 drilling formed part of early-stage ("greenfields") exploration activities, which were subsequently not advanced as the project focus shifted to nearby areas forming the foundation of the initial McLaren Deposit. The holes reported in Appendix 1 are believed to have been drilled using standard air-core methods, with appropriate sampling procedures for the period.

McLaren Minerals intends to undertake twin-hole and infill drilling to verify the accuracy and representativeness of the historical results. These works will form an integral component of the Company's forward exploration programs at the McLaren Project

For personal use only



For personal use only

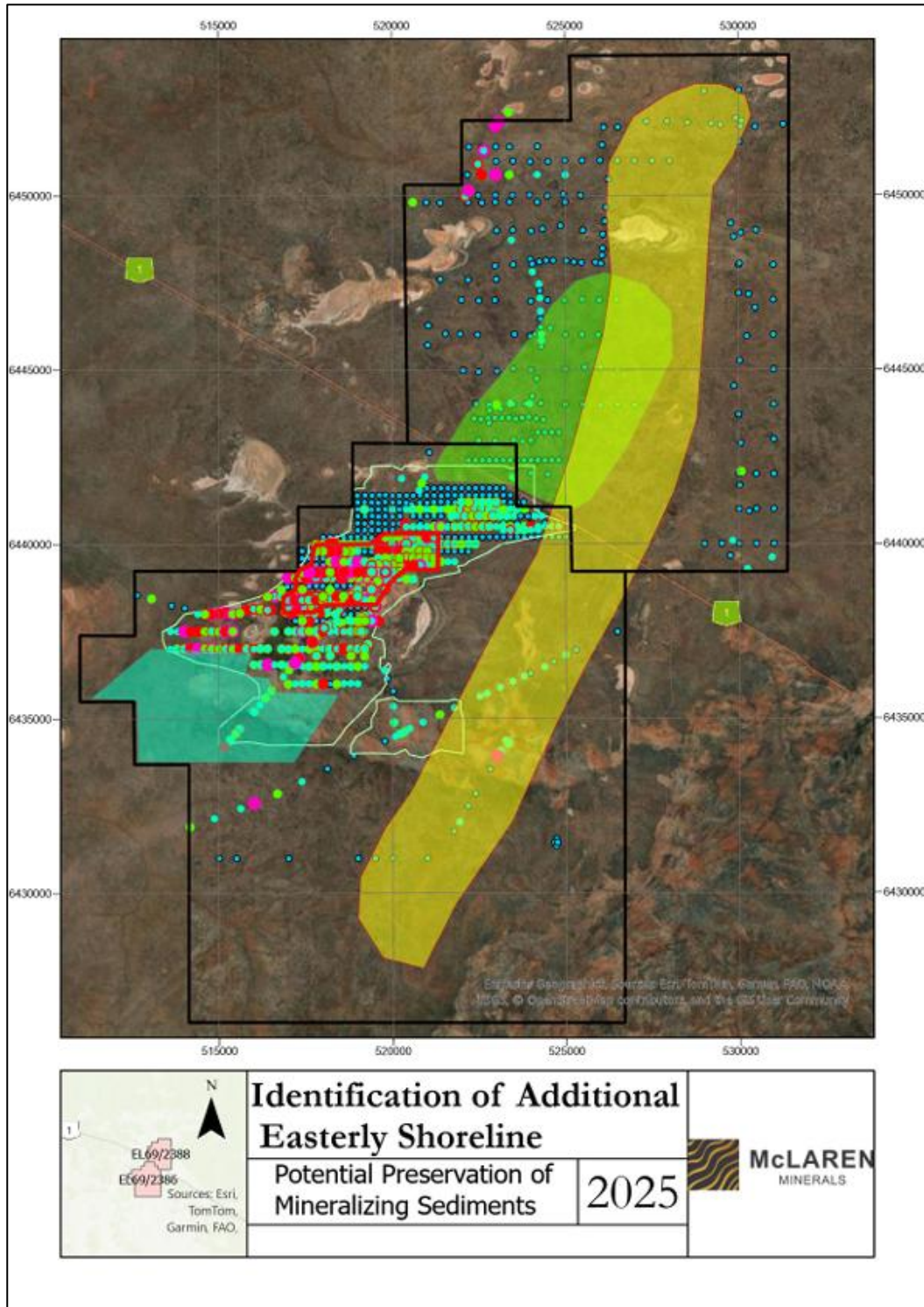


Figure 2: Position of Prospective second shoreline adjacent McLaren Titanium project, displaying low density, shallow mineral hits in the south and low density drilling in the north

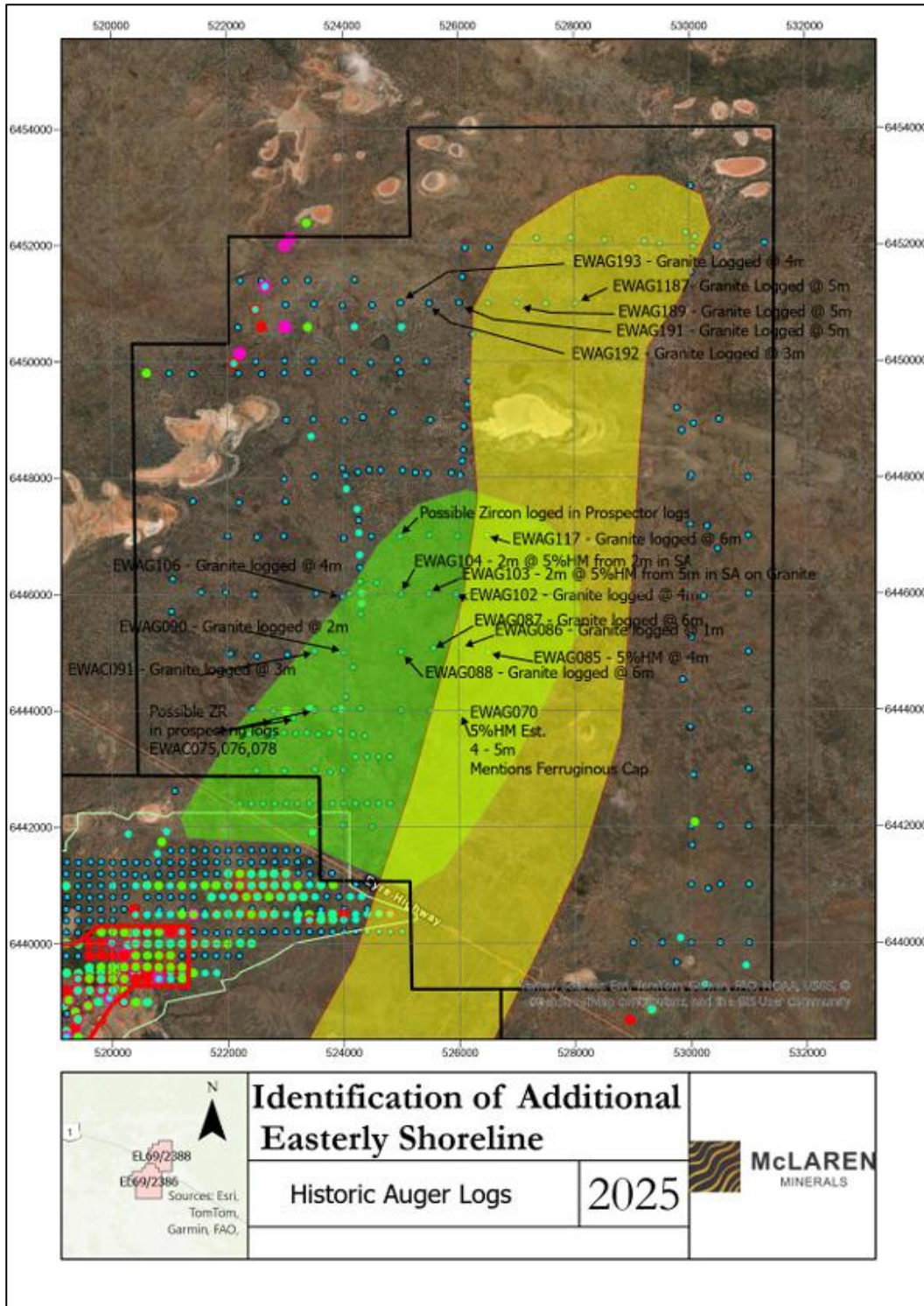


Figure 3: Historic Auger Logs supporting interpretation of target as easterly lower shoreline

Cautionary Note:

The EWAG Series holes comprise historical hand auger drilling data. McLaren Minerals advises that while this information provides valuable geological context, certain historical records do not include associated laboratory identification numbers or laboratory details. The Company acknowledges this limitation in historical QAQC documentation and notes that the data should be regarded as indicative in nature pending further verification.

For personal use only



About McLaren Minerals Limited

McLaren Minerals is an exploration company focused on the future development of our high-value McLaren titanium project in the Eucla Basin of Western Australia. Titanium is considered a critical mineral and is essential for aerospace, defence and energy technologies.

This announcement has been authorised by the Board of Directors.

For further information, please contact:

Simon Finnis

Managing Director

McLaren Minerals

simon.finnis@mclarenminerals.com.au

+61 (0) 418 695 138

Paul Berson

Media and Investor Relations

Corporate Storytime

paul@corporatestorytime.com

+61 (0) 421 647 445

For personal use only



Competent Persons Statements

The information in this report that relates to Exploration Results is based on, and fairly reflects, information compiled by Mr Adam Grogan, a Competent Person, who is contracted to McLaren, is a Member of the Australian Institute of Geoscientists (MAIG). Mr Grogan has sufficient experience relevant to the style of mineralisation and type of deposit under consideration and to the activity which he is undertaking to qualify as Competent Person as defined in the 2012 Edition of the Australasian Code for the Reporting of Exploration Results (JORC Code). Mr Grogan consents to the disclosure of information in this announcement in the form and context in which it appears.

JORC classification	Tonnes (Mt)	HM grade (%)	In-situ HM tonnes (Mt)	Slimes (%)	Ilmenite (% of HM)	Rutile (% of HM)	Leucoxene (% of HM)	Zircon (% of HM)
Indicated	79	6.0	4.7	25.0	30.4	0.7	1.9	0.6
Inferred	201	4.4	8.8	25.4	29.0	0.7	2.1	0.6
Total	280	4.8	13.5	25.3	29.4	0.7	2.0	0.6

JORC classification	Tonnes (Mt)	HM grade (%)	Ilmenite tonnes (in situ) (kt)	Rutile tonnes (in situ) (kt)	Leucoxene tonnes (in situ) (kt)	Zircon tonnes (in situ) (kt)
Indicated	79	6.0	1,440	32	90	26
Inferred	201	4.4	2,550	60	182	54
Total	280	4.8	3,980	92	272	80

ERM Australia Consultants Pty Ltd (ERM), formerly CSA Global prepared a Mineral Resource estimate update for the McLaren heavy mineral sands (HMS) deposit. The purpose of the Mineral Resource estimate update was to incorporate assay and mineralogical analysis results received since the previous Mineral Resource estimate was completed in 2015. The Mineral Resource estimate is presented in Table 1 reported above a cut-off grade of 2% Heavy Mineral (HM) and less than 30% Slimes. The model has been classified as Indicated and Inferred in accordance with the JORC Code. The Mineral Resource estimate is an update to the Mineral Resource estimate prepared by CSA Global in 2015. Refer to ASX announcement dated 5 August 2024.

Australasian Code for Reporting of Exploration Results, Mineral Resources and Ore Reserves. The JORC Code, 2012 Edition. Prepared by: The Joint Ore Reserves Committee of The Australasian Institute of Mining and Metallurgy, Australian Institute of Geoscientists and Minerals Council of Australia (JORC).

This announcement contains references to announcements lodged on the ASX Platform on 5 Aug 24, 26 Sept 24, 29 Jan 25, 17 Feb 25, 24 Mar 25, 31 Mar 25, 24 Apr 25, 26 May 25, 18 August 25, 29 August 2025, 9th and 18th September 2025 as well as 3 October 2025. The Company confirms that there is no new information or data that materially affects these announcements, or the mineral resource estimates announced on 30 June 2022 and 5 August 2024, and that all assumptions underpinning the estimate continue to apply and have not materially changed. The Company confirms that the form and context in which the Competent Person's findings are presented have not been materially modified from the original market announcement.

For personal use only



Appendix 1: JORC (2012) Table 1

Section 1 Sampling Techniques and Data		
Criteria	Explanation	Comment
<i>Sampling techniques</i>	<p><i>Nature and quality of sampling (eg cut channels, random chips, or specific specialised industry standard measurement tools appropriate to the minerals under investigation, such as down hole gamma sondes, or handheld XRF instruments, etc). These examples should not be taken as limiting the broad meaning of sampling.</i></p> <p><i>Include reference to measures taken to ensure sample representivity and the appropriate calibration of any measurement tools or systems used.</i></p> <p><i>Aspects of the determination of mineralisation that are Material to the Public Report. In cases where 'industry standard' work has been done this would be relatively simple (eg 'reverse circulation drilling was used to obtain 1 m samples from which 3 kg was pulverised to produce a 30 g charge for fire assay'). In other cases more explanation may be required, such as where there is coarse gold that has inherent sampling problems. Unusual commodities or mineralisation types (eg submarine nodules) may warrant disclosure of detailed information.</i></p>	<p><i>Auger samples have been historically sampled to form the basis of the database (SLIMES%, DOMINANT LITHOLOGY, GRAIN SIZING, INDURATION/ROCK%, THM%)</i></p> <p><i>Induration and rock types identified are categorized and THM% is visually estimated</i></p> <p><i>McLaren Minerals cannot confirm or provide commentary of the sampling techniques or sample integrity of previous explorers.</i></p>
<i>Drilling techniques</i>	<p><i>Drill type (eg core, reverse circulation, open-hole hammer, rotary air blast, auger, Bangka, sonic, etc) and details (eg core diameter, triple or standard tube, depth of diamond tails, face-sampling bit or other type, whether core is oriented and if so, by what method, etc).</i></p>	<p><i>Hand Auger sample acquisition method – historical data</i></p>
<i>Drill sample recovery</i>	<p><i>Method of recording and assessing core and chip sample recoveries and results assessed.</i></p> <p><i>Measures taken to maximise sample recovery and ensure representative nature of the samples.</i></p> <p><i>Whether a relationship exists between sample recovery and grade and whether sample bias may have</i></p>	<p><i>McLaren Minerals cannot confirm or provide commentary however is unaware of any misrepresentation</i></p>

For personal use only



Criteria	Explanation	Comment
	<i>occurred due to preferential loss/gain of fine/coarse material.</i>	
<i>Logging</i>	<p><i>Whether core and chip samples have been geologically and geotechnically logged to a level of detail to support appropriate Mineral Resource estimation, mining studies and metallurgical studies.</i></p> <p><i>Whether logging is qualitative or quantitative in nature. Core (or costean, channel, etc) photography.</i></p> <p><i>The total length and percentage of the relevant intersections logged.</i></p>	<p><i>The intervals used to generate the target were acquired awith the tenements as the historical database</i></p> <p><i>McLaren Minerals cannot confirm or provide commentary of the practices used for logging by previous explorers.</i></p>
<i>Sub-sampling techniques and sample preparation</i>	<p><i>If core, whether cut or sawn and whether quarter, half or all core taken.</i></p> <p><i>If non-core, whether riffled, tube sampled, rotary split, etc and whether sampled wet or dry.</i></p> <p><i>For all sample types, the nature, quality and appropriateness of the sample preparation technique.</i></p> <p><i>Quality control procedures adopted for all sub-sampling stages to maximise representivity of samples.</i></p> <p><i>Measures taken to ensure that the sampling is representative of the in situ material collected, including for instance results for field duplicate/second-half sampling.</i></p> <p><i>Whether sample sizes are appropriate to the grain size of the material being sampled.</i></p>	<p><i>McLaren Minerals cannot confirm or provide commentary however is unaware of any misrepresentation</i></p>
<i>Quality of assay data and laboratory tests</i>	<p><i>The nature, quality and appropriateness of the assaying and laboratory procedures used and whether the technique is considered partial or total.</i></p> <p><i>For geophysical tools, spectrometers, handheld XRF instruments, etc, the parameters used in determining the analysis including instrument make and model, reading times, calibrations factors applied and their derivation, etc.</i></p> <p><i>Nature of quality control procedures adopted (eg standards, blanks,</i></p>	<p><i>McLaren Minerals cannot confirm or provide commentary however is unaware of any misrepresentation</i></p>

For personal use only



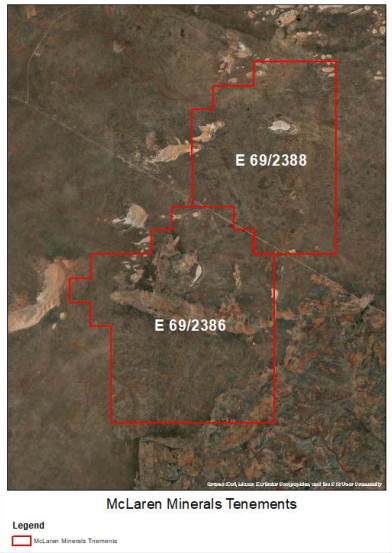
Criteria	Explanation	Comment
	<i>duplicates, external laboratory checks) and whether acceptable levels of accuracy (ie lack of bias) and precision have been established.</i>	
<i>Verification of sampling and assaying</i>	<p><i>The verification of significant intersections by either independent or alternative company personnel.</i></p> <p><i>The use of twinned holes.</i></p> <p><i>Documentation of primary data, data entry procedures, data verification, data storage (physical and electronic) protocols.</i></p> <p><i>Discuss any adjustment to assay data.</i></p>	<i>McLaren Minerals cannot confirm or provide commentary however is unaware of any misrepresentation</i>
<i>Location of data points</i>	<p><i>Accuracy and quality of surveys used to locate drill holes (collar and down-hole surveys), trenches, mine workings and other locations used in Mineral Resource estimation.</i></p> <p><i>Specification of the grid system used.</i></p> <p><i>Quality and adequacy of topographic control.</i></p>	<i>McLaren Minerals cannot confirm or provide commentary however is unaware of any misrepresentation</i>
<i>Data spacing and distribution</i>	<p><i>Data spacing for reporting of Exploration Results.</i></p> <p><i>Whether the data spacing and distribution is sufficient to establish the degree of geological and grade continuity appropriate for the Mineral Resource and Ore Reserve estimation procedure(s) and classifications applied.</i></p> <p><i>Whether sample compositing has been applied.</i></p>	<i>Drill holes are located 240m apart and extend to 1.5km , orientation about various azimuth associated with historical access and assumed limitations.</i>
<i>Orientation of data in relation to geological structure</i>	<p><i>Whether the orientation of sampling achieves unbiased sampling of possible structures and the extent to which this is known, considering the deposit type.</i></p> <p><i>If the relationship between the drilling orientation and the orientation of key mineralised structures is considered to have introduced a sampling bias, this should be assessed and reported if material.</i></p>	<i>The auger traverses align to historic grids aligning East West.</i>
<i>Sample security</i>	<i>The measures taken to ensure sample security.</i>	<i>McLaren Minerals cannot confirm or provide commentary however is unaware of any misrepresentation</i>

For personal use only



Criteria	Explanation	Comment
Audits or reviews	The results of any audits or reviews of sampling techniques and data.	No internal audits of Auger drilling can be performed due to age of data and absence of Laboratory identification notes supporting historical data therein.

Section 2 Reporting of Exploration Results

Criteria	Explanation	Comment
Mineral tenement and land tenure status	<p>Type, reference name/number, location and ownership including agreements or material issues with third parties such as joint ventures, partnerships, overriding royalties, native title interests, historical sites, wilderness or national park and environmental settings.</p> <p>The security of the tenure held at the time of reporting along with any known impediments to obtaining a licence to operate in the area.</p>	<p>Exploration activities were completed on E 69/2388 and E 69/2386 that are 100% owned by McLaren Minerals.</p> <p>All work was conducted with the relevant approvals from local and state authorities</p> <p>The tenure is secure with no impediments to obtaining a license to Operate, regarding Phase 1 Drilling 2025</p> 
Exploration done by other parties	Acknowledgment and appraisal of exploration by other parties.	<p>Historic exploration work was completed by BBI Group as an agent on behalf of Forge Resources Crown Pty Ltd with ERM Australia Consultants Pty Ltd completing a Mineral Resource Estimate in 2015.</p> <p>McLaren Minerals cannot provide commentary as to the validity of this work.</p>
Geology	Deposit type, geological setting and style of mineralisation.	The McLaren deposit occurs as a marine placer deposit within the Western Fraser Ranges, western Eucla Basin. The province is known to host economic mineral sand deposits.
Drill hole Information	A summary of all information material to the understanding of the exploration results including a tabulation of the following information for all Material drill holes:	No Auger data is represented in tables to support this communication as the historical data has been used to infer the interpretation of geology and McLaren Minerals does not intend to use the

For personal use only



Criteria	Explanation	Comment
	<p><i>easting and northing of the drill hole collar</i></p> <p><i>elevation or RL (Reduced Level – elevation above sea level in metres) of the drill hole collar</i></p> <p><i>dip and azimuth of the hole</i></p> <p><i>down hole length and interception depth</i></p> <p><i>hole length.</i></p> <p><i>If the exclusion of this information is justified on the basis that the information is not Material and this exclusion does not detract from the understanding of the report, the Competent Person should clearly explain why this is the case.</i></p>	<p><i>historic records for inclusion beyond geological conceptualisation</i></p>
<i>Data aggregation methods</i>	<p><i>In reporting Exploration Results, weighting averaging techniques, maximum and/or minimum grade truncations (eg cutting of high grades) and cut-off grades are usually Material and should be stated.</i></p> <p><i>Where aggregate intercepts incorporate short lengths of high grade results and longer lengths of low grade results, the procedure used for such aggregation should be stated and some typical examples of such aggregations should be shown in detail.</i></p> <p><i>The assumptions used for any reporting of metal equivalent values should be clearly stated.</i></p>	<p><i>AC data represented in table 1 has been historically composited to represent 1.5m intervals therein. Method of averaging has not been altered from inclusive averaging of total meters containing >2%HM divided by the total meters of the mineralising composite. McLaren Minerals can not provide commentary to validate the method beyond the representation in the historical database.</i></p>
<i>Relationship between mineralisation widths and intercept lengths</i>	<p><i>These relationships are particularly important in the reporting of Exploration Results.</i></p> <p><i>If the geometry of the mineralisation with respect to the drill hole angle is known, its nature should be reported.</i></p> <p><i>If it is not known and only the down hole lengths are reported, there should be a clear statement to this effect (eg ‘down hole length, true width not known’).</i></p>	<p><i>Mineralisation is noted to trend appropriately within the interpreted strike of shoreline target, supported by the preservation of appropriate topography..</i></p>
<i>Diagrams</i>	<p><i>Appropriate maps and sections (with scales) and tabulations of intercepts should be included for any significant discovery being reported These should include, but not be limited to a plan view of drill hole collar locations and appropriate sectional views.</i></p>	<p><i>Figures and plans are reported in the main text and are clearly labelled, displayed in GDA94/UTM51 coordinates</i></p>
<i>Balanced reporting</i>	<p><i>Where comprehensive reporting of all Exploration Results is not practicable, representative reporting of both low and</i></p>	<p><i>Figures and plans are reported in the main text and are clearly labelled, displayed in</i></p>

For personal use only



Criteria	Explanation	Comment
	<i>high grades and/or widths should be practiced to avoid misleading reporting of Exploration Results.</i>	<i>GDA94/UTM51 coordinates displaying all locations drilled and reported</i>
<i>Other substantive exploration data</i>	<i>Other exploration data, if meaningful and material, should be reported including (but not limited to): geological observations; geophysical survey results; geochemical survey results; bulk samples – size and method of treatment; metallurgical test results; bulk density, groundwater, geotechnical and rock characteristics; potential deleterious or contaminating substances.</i>	<i>No other information is being reported in this interim release</i>
<i>Further work</i>	<i>The nature and scale of planned further work (eg tests for lateral extensions or depth extensions or large-scale step-out drilling). Diagrams clearly highlighting the areas of possible extensions, including the main geological interpretations and future drilling areas, provided this information is not commercially sensitive.</i>	<i>Further work will be defined following the completion of planning</i>

For personal use only



Appendix 1 : Historical AC Holes identifying Southern Mineralisation within Eastern Shoreline Target

Hole ID	Depth From (m)	Depth To (m)	HM_Average Grade (HM)	Cut_Off Grade (HM)	Comment
EWAC0046	0	3	2.01	2	3m @ 2.01%HM from surface (Upper Strand)
EWAC0046	6	6.5	3.52	2	0.5m @ 3.52%HM from 6m (Lower Strand) - OPEN
EWAC0048	0	4.5	2.65	2	4.5m @ 2.65%HM from surface (Upper Strand)
EWAC0049	0	3	2	2	3m @ 2%HM from surface (Upper Strand - Open
EWAC0050	0	6	2.3	2	6m @ 2.3%HM from surface (Upper Strand) - Open
EWAC0051	0	10.5	2.85	2	10.5m @ 2.84%HM from surface (Upper Strand)
EWAC0052	0	6	3	2	6m @ 3%HM from surface (Upper Strand) - Open
EWAC0053	0	6	2.92	2	6m @ 2.92%HM from surface (Upper Strand) - Open
EWAC0054	0	6	3.05	2	6m @ 3.05%HM from surface (Upper Strand) - Open
EWAC0217	0	6	4.4	2	6m @ 4.4%HM from Surface (Upper Strand) - Open
EWAC0218	0	3	3.1	2	3m @ 3.1%HM from Surface (Upper Strand) - Open
EWAC0219	0	7.5	3.4	2	7.5m @ 3.4%HM from Surface (Upper Strand) - HG 9.74%HM - Open
EWAC0223	0	4.5	3.5	2	4.5m @ 3.5%HMN from Surface (Upper Strand) - Open
EWAC0225	1.5	4.5	2.84	2	3m @ 2.84%HM from 1.5m (Upper Strand) - Open

For personal use only