

4 November 2025

## Revised Announcement – Phase 1 Test Results from CSIRO Research Program

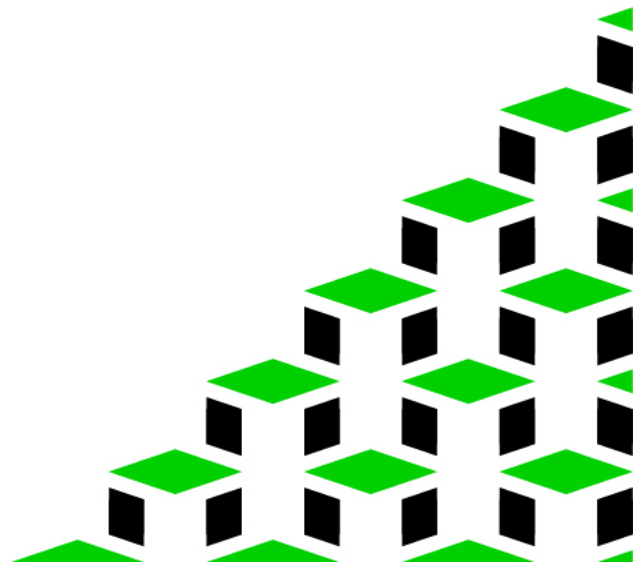
Hawsons Iron Ltd (ASX:HIO) (“Company”) wishes to advise of the following amendment to the ASX announcement “Phase 1 Test Results from CSIRO Research Program” released to the ASX on 29 October 2025:

**Page 9:** The following table has been added – *JORC Table 1, Section 2: Reporting of Exploration Results.*

This announcement was authorised by the Board.

For further information contact:

Michael Harvey  
Company Secretary  
[michael.harvey@hawsons.com.au](mailto:michael.harvey@hawsons.com.au)  
+61 7 3554 1003



For personal use only

## Positive Phase 1 Test results from CSIRO Research Program

---

### Highlights

- First phase of the CSIRO research project, focused on understanding the mineralogy of the non-magnetic iron tailings stream with a view to developing a secondary product recovery strategy, is now complete.
  - The results from the test work demonstrated the following:
    - the major component in the tailings samples was dominated by hematite and quartz;
    - Low levels of magnetite (1% or less) were detected in the tailings samples confirming high recovery of magnetite in earlier stages of process separation; and
    - phosphorus exists predominantly as discrete phosphate minerals, potentially simplifying the removal of phosphorus as part of upgrading a hematite concentrate.
  - These encouraging results provide the basis for further investigations into the potential economic recovery of hematite from the tailings stream.
- 

Hawsons Iron Limited (**Hawsons**) is pleased to advise the completion of the first phase of the collaborative research project with CSIRO, Australia's national science agency, with financial assistance provided through its Kick-Start Program.

The focus on the first phase of works was to identify the chemical and mineralogical properties of the non-magnetic iron content contained within the tails fraction. The program was structured to assist Hawsons in determining the high-level technical feasibility of extracting hematite as a potential byproduct of the Hawsons Iron Project (**Project**). The key aims for this work were to determine:

- a) The main Fe-bearing mineral contained within the tailings stream;
- b) The degree of liberation of the non-magnetic iron-bearing minerals in the tails and the associated gangue minerals; and
- c) To gain a better understanding of the presence of phosphorus (**P**) (and other impurity elements) in the tailings fraction.

### Summary of Technical Results

Based on chemical characterisation work using X-ray Fluorescence (**XRF**) Spectroscopy, the major element chemistry in all four samples was dominated by  $\text{Fe}_2\text{O}_3$  and  $\text{SiO}_2$ .

Impurities present, in approximate order of abundance, included:  $\text{Al}_2\text{O}_3 > \text{MgO} \sim \text{CaO} > \text{K}_2\text{O} > \text{Na}_2\text{O} > \text{Mn}_3\text{O}_4$ . These results suggest the presence of aluminosilicate gangue minerals, most likely feldspars and/or micas.



Mineralogical characterisation by X-ray Diffraction (XRD) identified:

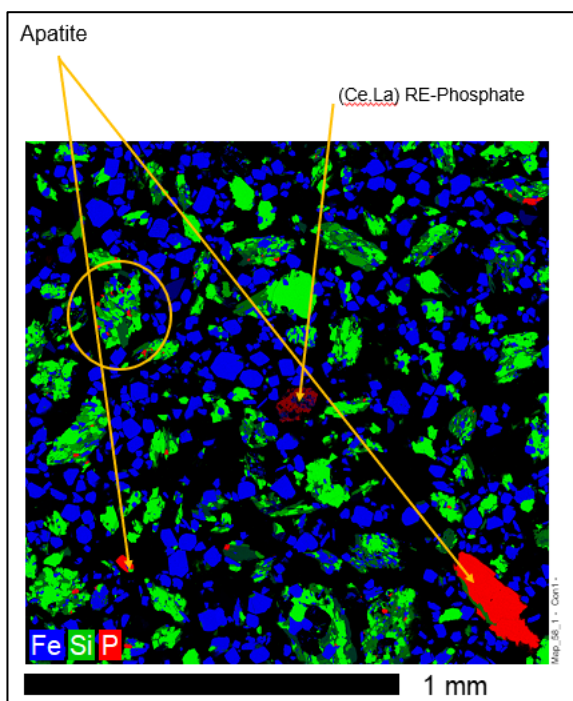
- Samples were dominated by hematite and quartz with minor muscovite, dolomite, albite (feldspar), chamosite (chlorite-group mineral). The ratios of hematite:quartz varied according to tabling conditions/parameters for the different concentrates.
- Additional Fe-oxide (magnetite) and Fe oxyhydroxide (goethite) phases were collectively <2% in abundance.
- There was no evidence for any phosphate containing phase(s).
- Gangue phases are primarily responsible for the elevated levels of Al<sub>2</sub>O<sub>3</sub> (muscovite and feldspar), MgO (dolomite and muscovite), CaO (dolomite and tr. calcite), K<sub>2</sub>O (muscovite).

Client ID	Magnetite	Hematite	Calcite	Quartz	Dolomite	Chamosite	Muscovite	Goethite	Albite	Microcline
Con1	1	46	<1	32	5	2	8	2	3	<1
Con2A	1	45	<1	34	6	2	7	1	3	<1
Con2B	1	29	<1	44	7	3	10	1	4	1
Con3	<1	25	<1	47	9	3	9	1	5	1

**Table 1: QXRD (relative crystalline wt%). Note: QXRD has a detection limit of 1-2%**

The final phase of the work focused on examining the distribution of phosphorus using Electron Probe Microanalysis (EPMA).

The key technical findings from the EPMA were as follows:



**Figure 1: EPMA element distributions**

The image (left) for Con1 shows that phosphorus occurs in two forms:

1. As discrete Ca-rich phosphate grains (the correlation between P and Ca suggests this phase is most likely apatite; and
2. as a (Ce,La) Rare Earth -phosphate phase.

Apatite is the more common form of phosphate in the sample and occurs as either discrete, fully liberated particles (indicated by arrows) or as smaller, poorly liberated grains in composite particles (circled).

Most hematite grains are well-liberated. Composite particles are largely composed of various aluminosilicates (various shades of olive green) and quartz (bright green).

There was no evidence for phosphorus occurring as a substitutional contaminant within hematite grains.



**Hawsons CEO, Tom Revy, commented:** *“The results of this test work have not only confirmed the Company’s earlier assessments on tailings mineralogy, but have provided Hawsons sufficient confidence to progress further investigations into the potential economic recovery of hematite as a byproduct from the tailings stream.*

*These results will not be considered in the Company’s current prefeasibility (PFS) activities which are focused on future magnetite production only. The Hawsons Iron Project PFS is still planned to be completed by year end.”*

### **Next Steps**

As an outcome of these results, the Company plans to undertake further metallurgical testwork to determine the most appropriate method of rejecting the phosphorus and quartz minerals whilst retaining the hematite. This is likely to be by flotation or similar process methods using existing technologies.

### **Acknowledgment**

This project was made possible by CSIRO Kick-Start, an initiative that provides funding and support for innovative Australian start-ups and SMEs to access CSIRO’s research expertise and capabilities to help grow and develop their business.

### **Head Office**

Level 3  
410 Queen Street  
Brisbane QLD 4000  
Phone: +61 7 3554 1003  
Website: [www.hawsons.com.au](http://www.hawsons.com.au)

### **Share Registry**

MUFG Corporate Markets  
Level 12, 300 Queen Street  
Brisbane QLD 4000  
Phone: 1300 554 474

This announcement is authorised by the Board.

For further information contact:

Tom Revy  
Chief Executive Officer  
[tom.revy@hawsons.com.au](mailto:tom.revy@hawsons.com.au)  
+61 411 475 376



## JORC Code, 2012 Edition – Table 1 Hawsons Magnetite Project CSIRO Samples

### Location and Geology

Hawsons Iron Magnetite Ore Deposit is situated 65km south-west of Broken Hill about 10km on the NSW side of the NSW/SA border. It can be described as a Rapitan-style stratified turbidite sequence that dips approximately 45° down to the SW in the Core West and Core East areas and up to 70° down to the NW in the Fold Area. The sequence consists of magnetite rich siltstones, sandstones and diamictites. The DTR% grade of the magnetite product is up to 70% iron and the ore is comparatively soft where the crystalline magnetite liberates readily from the ore.

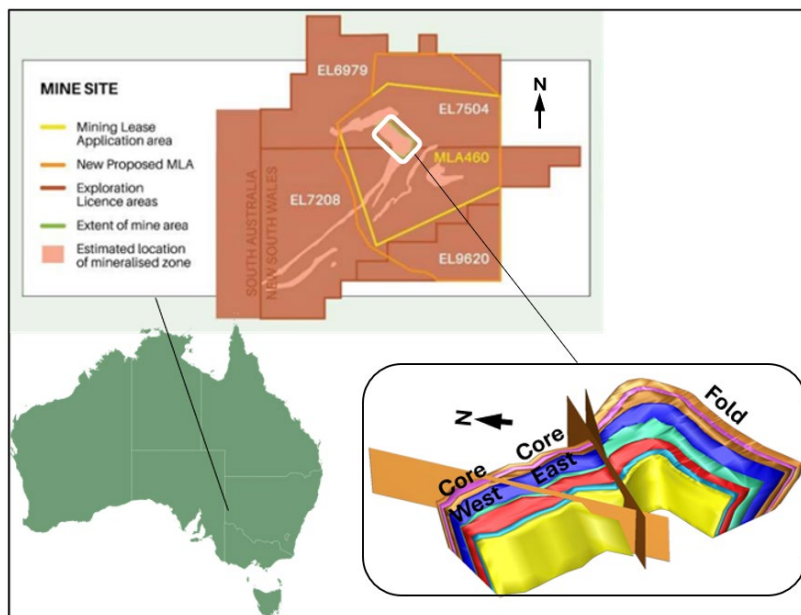


Figure 2: Hawsons Iron location plan and schematic structural diagram (red band = Unit 3, blue band = Unit 2 and pink band = Unit 1)

### Sample Constituents

Samples that formed the basis of the CSIRO analysis consisted of material from Units 2 and 3:

- 15 drums of core samples from drillholes RDCW21005, RDCW21006 and GFCW22020 (Figure 4)
- 8C (8inch = 200mm diameter) core hole LDCW21004 cored from 59.00m – 92.70m (= 33.70m total core length). This core was packed into 12 x 200L drums (Figure 3)
- While digging the sump for drillhole RCFO23015 high grade material was intersected in the near surface. This material was sampled into 4 intermediate bulk containers (IBCs) (Figure 5)



Figure 3: Drums 1-4 on pallet #1 (out of a total of 12 drums of 8C core from drillhole LDCW21004)



**Figure 4:** Pallets of trays of  $\frac{3}{4}$  HQ3 diamond drill core to be used for testing at ALS Perth



**Figure 5:** RCFO23015 drillhole sump and an example of the sample recovered

The following is a summary of the sample masses of feedstock for the ALS samples:

Sump sample IBCs:	5,306kg
HQ3 drill core:	8,214kg
8C core:	3,229kg

The sample feedstock (HQ3 core, 8C core, and the sump sample) was used in testwork programs at ALS, Perth. This testwork consisted of comminution (crushing and grinding) and magnetic separation to produce the non-mags sample sent for analysis to CSIRO.

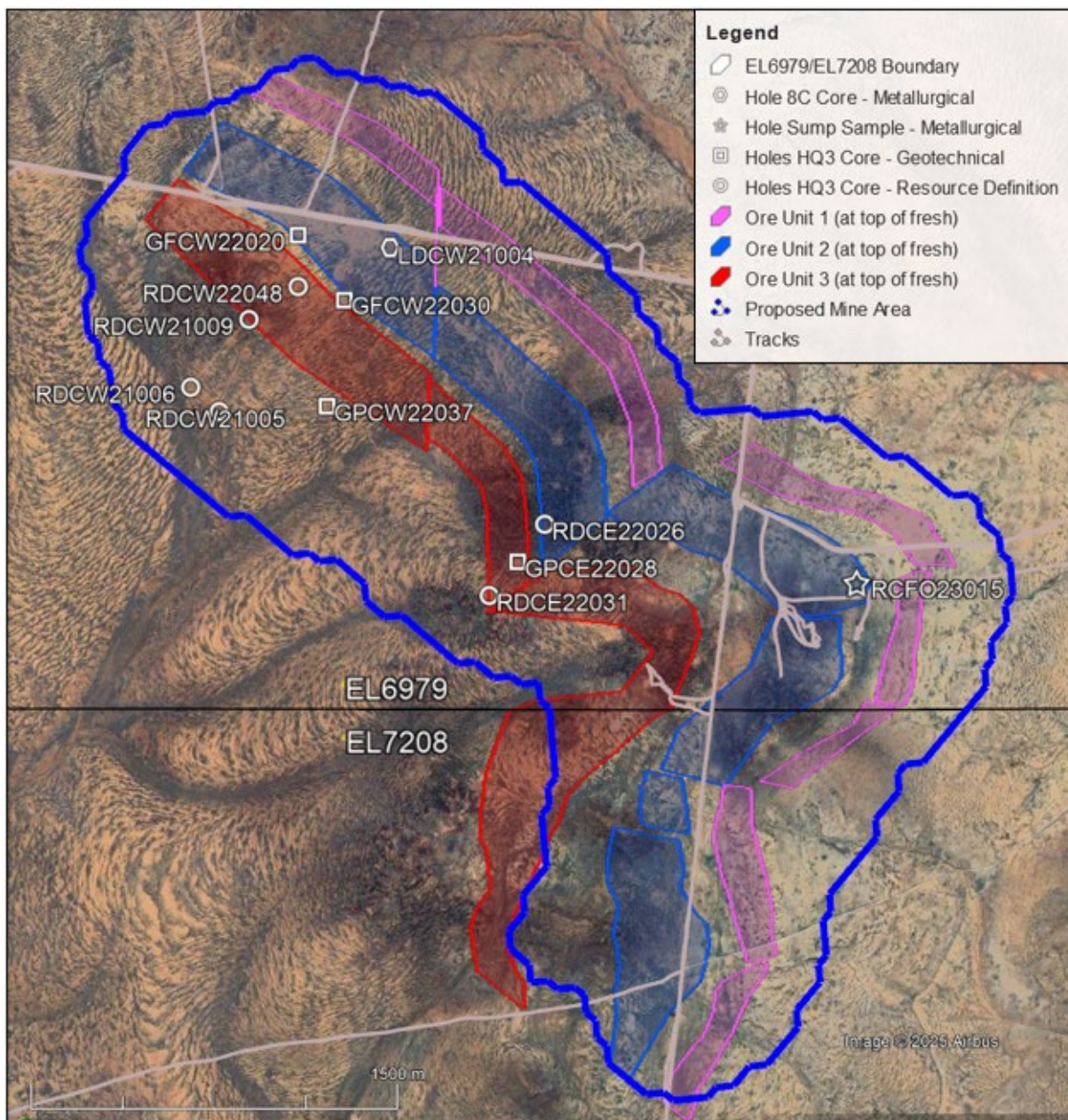
The list of core and sump samples used is shown in Table A.



**Table A: Record of samples used in the process of producing the CSIRO test sub-samples**

ALS Project No.	Hole ID	East GDA2020	North GDA2020	RL (AHD)	Tot Depth (m)	Azi (°)	Dip (°)	Hole Purpose	Sample Type	Depth From (m)	Depth To (m)	Length (m)	Comments	
A23297	RDCW21005	511965.48	6412719.73	187.25	590.43	040	-55	Resource Definition	1/2 Core in Drums	325.00	582.90	257.90	Entire core length provided (no missing intervals). 6 Drums of core.	
	RDCW21006	511852.15	6412819.31	187.26	561.20	040	-55	Resource Definition	1/2 Core in Drums	165.50	560.20	394.70	Entire core length provided (no missing intervals). 4 Drums of core.	
	GFCW22020								Geotechnical Assessment	Full Core in Drums	70.00	83.45	13.45	Missing intervals (ranging between 19-28cm) sampled for geotechnical testing.
										Full Core in Drums	83.73	151.21	67.48	
										Full Core in Drums	151.46	270.36	118.90	
Full Core in Drums										270.57	330.32	59.75		
A24666	RDCE22031	513068.21	6411981.25	195.18	400.00	040	-55	Resource Definition	3/4 Core in Trays	248.70	400.30	151.60	Entire core length provided (no missing intervals).	
	GFCW22030							Geotechnical Assessment	3/4 Core in Trays	2.50	6.08	3.58	Missing intervals (ranging between 10-40cm) sampled for geotechnical testing.	
3/4 Core in Trays									6.28	13.16	6.88			
3/4 Core in Trays									13.54	18.81	5.27			
3/4 Core in Trays									19.10	22.70	3.60			
3/4 Core in Trays									22.97	26.30	3.33			
3/4 Core in Trays									26.50	31.93	5.43			
3/4 Core in Trays									32.14	34.63	2.49			
3/4 Core in Trays									34.89	57.90	23.01			
3/4 Core in Trays									58.30	61.10	2.80			
3/4 Core in Trays									61.35	82.17	20.82			
3/4 Core in Trays									82.57	106.58	24.01			
3/4 Core in Trays									106.86	139.60	32.74			
3/4 Core in Trays									139.90	145.16	5.26			
3/4 Core in Trays									145.40	188.34	42.94			
3/4 Core in Trays									188.60	245.80	57.20			
3/4 Core in Trays									245.99	333.22	87.23			
3/4 Core in Trays									333.72	339.90	6.18			
3/4 Core in Trays									340.17	438.70	98.53			
3/4 Core in Trays									438.80	444.57	5.77			
3/4 Core in Trays	444.85	450.81	5.96											
GPCE22028	513180.20	6412114.17	195.48	250.80	220	-70	Geotechnical Assessment	3/4 Core in Trays	95.70	151.65	55.95	Missing intervals (ranging between 19-26cm) sampled for geotechnical testing.		
								3/4 Core in Trays	151.91	219.91	68.00			
								3/4 Core in Trays	220.10	231.80	11.70			
								3/4 Core in Trays	232.05	241.70	9.65			
GPCW22037	512402.87	6412748.89	188.71	400.00	220	-70	Geotechnical Assessment	3/4 Core in Trays	90.00	152.60	62.60	Missing intervals (ranging between 25-30cm) sampled for geotechnical testing.		
								3/4 Core in Trays	152.86	273.70	120.84			
								3/4 Core in Trays	273.95	328.60	54.65			
								3/4 Core in Trays	328.90	399.84	70.94			
RDCE22026	513298.48	6412255.92	196.49	450.40	040	-55	Resource Definition	3/4 Core in Trays	339.50	450.40	110.90	Entire core length provided (no missing intervals).		
RDCW21009	512091.43	6413091.81	192.63	540.40	040	-55	Resource Definition	3/4 Core in Trays	387.30	540.40	153.10	Entire core length provided (no missing intervals).		
RDCW22048	512294.53	6413222.39	194.06	402.20	040	-55	Resource Definition	3/4 Core in Trays	347.50	402.20	54.70	Entire core length provided (no missing intervals).		
LDCW21004	512671.51	6413384.05	194.07	92.70	000	-90	Metallurgical Testing	Full Core in Drums	59.00	92.70	33.70	Entire core length provided (no missing intervals).		
RCFO23015	514556.13	6412044.34	197.09	2.50	000	-90	Drillhole Sump Sample	Lump Sample in IBCs	0.70	2.50	1.80	Surficial ore recovered during excavation of a drillhole sump. Loaded into 4 x IBCs.		

personal use only



**Figure 6:** Locations of source sample sites used for CSIRO samples.



## Section 1: Sampling Techniques and Data

Criteria	Commentary
<b>Sampling techniques</b>	<p>The feedstock samples tested at ALS Metallurgy &amp; Mineral Processing were derived from selected intervals of HQ3 (61.1mm) diamond core from 10 drillholes and 1 large diameter 8C (200mm diameter) and 1 cored hole drilled within the overall pit shell of the Hawsons project area. An additional 4 x IBC grab sample from the mineralised subcrop in the RCFO23015 drill sump was included.</p> <p>The selection criteria was completed to ensure representative lateral cover existed across the project area and representative vertical cover existed across the prospective mineralised units.</p> <p>All crushing, sampling and assay for individual samples used in the comminution testing was performed to industry standards at ALS Perth.</p>
<b>Drilling techniques</b>	No new drill results are reported in this announcement. The drilling results for this exercise have previously been reported.
<b>Drill sample recovery</b>	No new drill results are reported in this announcement.
<b>Logging</b>	All core sample was logged geologically to a level of detail appropriate to support metallurgical sampling.
<b>Sub-sampling techniques and sample preparation</b>	Subsampling techniques and sample preparation were conducted to industry standards at ALS Metallurgy & Mineral Processing, Perth.
<b>Quality of assay data and laboratory tests</b>	<p>All analysis was completed at a third-party laboratory (ALS Perth). The magnetic mineral (magnetite) content (%) was determined by Davis Tube Recovery (DTR). Assay was conducted by XRF to produce a 14-element suite (oxides) and LOI was determined by gravimetric method both on the head samples and the DTR samples.</p> <p>Laboratory procedures are in line with industry standards and are appropriate for magnetite iron ore.</p> <p>The third-party laboratory inserts their own standards at set frequencies and monitors the precision of the XRF analysis.</p>
<b>Verification of sampling and assaying</b>	Apart from data and samples resubmitted to the third party for review / re-analysis following Lab-In QAQC error-trapping, no adjustments were made to the assay data.
<b>Location of data points</b>	<p>All geolocation x, y, z data is referenced to GDA2020 datum with a Differential GPS. Height datum is AHD.</p> <p>Downhole geolocation survey is conducted using both industry standard logging tools along the drill string and by gyroscopic downhole geophysical logging tools.</p>
<b>Data spacing and distribution</b>	Based on the geological understanding of the deposit the composite sample locations are considered adequate to establish the degree of geological and grade continuity appropriate for the samples.
<b>Orientation of data in relation to geological structure</b>	The orientation of the mineralisation and the deposit structure is well understood and sample locations were selected to sample the mineralisation appropriately.
<b>Sample security</b>	All samples are placed in containers appropriate for the nominated analyses and then a chain of custody process is followed to track sample security.
<b>Audits or reviews</b>	No external audit or reviews have been undertaken specifically in relation to these exploration results.



## Section 2: Reporting of Exploration Results

Criteria	Commentary
<b>Mineral tenement and land tenure status</b>	<ul style="list-style-type: none"> <li>The Hawsons Magnetite project is located in Western NSW, 60 km southwest of Broken Hill. The deposit is 30km from the Adelaide-Sydney railway line, a main highway and a power supply.</li> <li>The project is wholly owned by Hawsons Iron Limited who currently manage the project.</li> <li>In December 2023, Hawsons acquired a new tenement (EL9620) that adjoins the southern boundary of EL7208. The project area is entirely within Exploration Licences (ELs) 6979, 7208, 7504 &amp; 9620. Hawsons is the sole tenure holder of these ELs.</li> </ul>
<b>Exploration done by other parties</b>	<ul style="list-style-type: none"> <li>In 1960 Enterprise Exploration Company (the exploration arm of Consolidated Zinc) outlined a number of track-like exposures of Neoproterozoic magnetite ironstone (+/- hematite) which returned a maximum result of 6m at 49.1% Fe from a cross- strike channel sample. No drilling was undertaken by Enterprise.</li> <li>In 1984, CRAE completed, five holes within EL 6979 seeking gold mineralisation in a second-order linear magnetic low interpreted to be a concealed faulted iron formation within the hinge of the curvilinear Hawsons' aeromagnetic anomaly. CRAE's program failed to locate significant gold or base metal mineralisation, but the drilling intersected concealed broad magnetite ironstone units interbedded with diamictite adjacent to the then untested peak of the highest amplitude segment of the Hawsons aeromagnetic anomaly.</li> <li>These exploration results have been reported to the ASX.</li> </ul>
<b>Geology</b>	<ul style="list-style-type: none"> <li>The Hawsons Magnetite Project is situated within folded, upper greenschist facies Neoproterozoic rocks of the Adelaide Fold Belt. The Braemar Iron Formation is the host stratigraphy and comprises a series of strike extensive magnetite-bearing siltstones generally with a moderate dip (circa -55o), primarily to the southwest. The airborne magnetic data clearly indicates the magnetite siltstones as a series of parallel, high amplitude magnetic anomalies. Large areas of the Hawsons prospective stratigraphy are concealed by transported ferricrete and other younger cover. The base of oxidation due to weathering over the prospective horizons is estimated to average 80m from surface.</li> <li>The Hawsons project comprises a number of prospects including the Core West, Core East, Fold, T, Limb, South Limb and Wonga deposits. Mineral Resources have been generated for the Core and Fold areas, which are contiguous.</li> <li>The depositional environment for the Braemar Iron Formation is believed to be in a subsiding basin, with initial rapid subsidence related to rifting possibly in a graben setting as indicated by the occurrence of diamictites in the lower part of the sequence (Unit 2). A possible sag phase of cyclical subsidence followed with deposition of finer grained sediments with more consistent bed thicknesses, style and clast composition (Unit 3), as compared to the diamictite units. The transition from high (Unit 2) to lower (Unit 3) energy sediment deposition is marked by top of the Interbed Unit.</li> <li>The distribution of disseminated, inclusion-free magnetite in the Braemar Iron Formation at Hawsons is related to the composition and nature of the sedimentary beds. The idioblastic nature of the of the magnetite is believed due to one or more of a range of possible processes including in situ recrystallisation of primary detrital grains, chemical precipitation from seawater, or permeation of iron-rich metamorphic fluids associated with regional greenschist metamorphism. Grain size generally ranges from 10microns to 0.2mm but tends to average around the 40microns. The sediment composition and grain size appear to provide the main control on the mineralisation. There is no evidence for structural control in the form of veins or veinlets coupled with the lack of a strong structural fabric.</li> </ul>

personal use only



Criteria	Commentary
	<ul style="list-style-type: none"> <li>In the majority of the Core and Fold deposits the units strike southeast and dip between 45 and 65° to the south west. The eastern part of the Fold deposit comprises a relatively tight synclinal fold structure resulting in a 90° strike rotation.</li> </ul>
<b>Drill hole Information</b>	<ul style="list-style-type: none"> <li>Exploration results are not being reported. No additional exploration has been completed since 2024-H1. Table A on page 6 gives the data for the sample intervals from drillholes that were used in this work.</li> </ul>
<b>Data aggregation methods</b>	<ul style="list-style-type: none"> <li>No new drillhole results are being reported in this announcement.</li> </ul>
<b>Relationship between mineralisation widths and intercept lengths</b>	<ul style="list-style-type: none"> <li>No new drillhole results are being reported in this announcement.</li> <li>Drilling has tended to be at a steep angle to the dip angle of the sedimentary beds.</li> </ul>
<b>Diagrams</b>	<ul style="list-style-type: none"> <li>Exploration results are not being reported.</li> <li>A map showing the locations of past drillholes that were used in this work is shown in Figure 6 of the body text of the announcement.</li> </ul>
<b>Balanced reporting</b>	<ul style="list-style-type: none"> <li>No new drillhole results are being reported in this announcement.</li> </ul>
<b>Other substantive exploration data</b>	<ul style="list-style-type: none"> <li>A substantial amount of polished and thin section work has been completed on both RC chips and diamond core. This work has confirmed the nature and style of both the original sediment and the iron minerals including magnetite, hematite, chlorite and ferroan dolomite.</li> <li>Downhole geophysics comprises magnetic susceptibility, gamma and density and has been completed for a majority of the holes. This has resulted in the definition of a magnetic (and density- related) stratigraphy that is coincident with a chronostratigraphic interpretation.</li> <li>A geotechnical report was furnished by Gutteridge Haskins and Davey (GHD) in 2019 titled “Carpentaria-Hawsons Iron Ore project 2017 Prefeasibility Study Geotechnical Assessment.” This study was completed via a staged approach to progressively improve the level needed to be addressed.</li> <li>For the 2021-2022 exploration program, Pells, Sullivan &amp; Meynink (PSM) completed a geotechnical design study for pit wall stability and to fill the gaps outlined in the GHD report. This report was completed in October 2022.</li> <li>TSIM VLF-EM ground-borne geophysical surveys have been conducted by Hawsons to help ascertain the north westerly and southeasterly extensions of newly discovered near-surface and exposed mineralisation in the Fold Zone and to assist with drillhole targeting.</li> <li>Reinterpretation of the 2010 ground-borne geophysical survey data was completed in 2023-2024 which aided in the modelling of the resource.</li> </ul>
<b>Further work</b>	<ul style="list-style-type: none"> <li>Infill drilling is planned to upgrade the current Mineral Resources to Measured and Indicated and to upgrade a portion of the Exploration Target to Inferred.</li> <li>Additional drilling to obtain core for further metallurgical tests is planned.</li> </ul>

personal use only



---

## Competent Persons Statement

The data in this report that relates to Exploration Results for the Hawsons Magnetite Project is based on information evaluated by Mr. Wes Nichols who is a Member of the Australian Institute of Mining and Metallurgy and who has sufficient experience relevant to the style of mineralisation and type of deposit under consideration and to the activity which he is undertaking to qualify as a Competent Person as defined in the 2012 Edition of the Australasian Code for Reporting of Exploration Results, Mineral Resources and Ore Reserves (the "JORC Code"). Mr. Nichols is a full-time employee of Hawsons Iron Limited and he consents to the inclusion in the report of the Exploration Results in the form and context in which they appear.

For personal use only