



RETRACTION OF PRESENTATION TO INVESTORS

Kalgoorlie Gold Mining (ASX:KAL) ('KalGold' or 'the Company') refers to the Presentation to Investors dated 15 October 2025 (**Presentation**).

At the request of the ASX, slide 9 of the Presentation has been removed, as the Company did not have a reasonable basis for making the statement "*We think there are +5Moz deposits to be discovered in the south*".

Readers should disregard and not rely upon this disclosure in the Presentation for the purposes of their investment decisions regarding KalGold.

A revised Presentation to Investors is attached.

This announcement has been authorised for release to the market by the Managing Director.

For personal use only

For personal use only



Discovering a hidden goldfield at Pinjin

Testing key gold-mineralising structures for giant deposits

Ignite Investment Summit, Hong Kong – 15-16 October 2025

DISCLAIMER AND FORWARD-LOOKING STATEMENT

This presentation has been prepared by Kalgoorlie Gold Mining Limited (**Company**). It contains general background information only which is current at the date of this presentation unless otherwise specified. It contains selected summary information and does not purport to be all-inclusive, comprehensive or to contain all of the information that may be relevant, or which a prospective investor may require in evaluations for a possible investment in the Company. Prospective investors should not rely on the information contained in this presentation, and must satisfy themselves as to the accuracy of all such information. This presentation has been prepared based on information available at the time of preparation and is subject to change without notice. In receiving this presentation, each recipient agrees to the foregoing terms and conditions, including any modifications to them. No person is under any obligation to update this presentation at any time after its release.

This presentation is provided for general information purposes only. This presentation does not constitute an offer, invitation, solicitation or recommendation with respect to the purchase or sale of securities in the Company in any jurisdiction. It is not a prospectus, product disclosure statement, pathfinder document or any other type of public offer disclosure document for the purposes of the Corporations Act 2001 (Cth) and has not been, and is not required to be, lodged with the Australian Securities and Investments Commission (**ASIC**). It should not be relied upon by the recipient in considering the merits of the Company, or the acquisition of shares in the Company.

None of KalGold, its subsidiaries nor its representatives make any representation, warranty or guarantee of any kind, express or implied, as to the accuracy, completeness or reasonableness of the information contained herein or any other written or oral communication transmitted or made available to any person receiving this presentation. To the maximum extent permitted by law, KalGold, its subsidiaries and representatives expressly disclaim any and all liability based on or arising from, in whole or in part, such information, or any errors or omissions.

This presentation contains forward-looking statements regarding the Company's resources, intentions and future business, including the future business of its subsidiaries. These statements reflect current information, expectations, intentions and strategies regarding the future, and are subject to certain risks and uncertainties. Should one or more of these risks or uncertainties materialise, or should any of the underlying assumptions prove incorrect, actual results may vary from the expectations, intentions and strategies described in this presentation. Investors are cautioned not to place undue reliance on forward-looking statements, which speak only as of the date they are made. Other than where required by law, the Company is under no obligation to revise any forward-looking statement to reflect events or circumstances after the date of this presentation or to reflect the occurrence of unanticipated events.

Though reasonable care has been taken to ensure that the facts are accurate and/or that the opinions expressed are fair and reasonable, no reliance can be placed for any purpose whatsoever on the information contained in this document or on its completeness. Actual results and developments of projects and the market development may differ materially from those expressed or implied by these forward-looking statements depending on a variety of factors.

No stock exchange, regulation services provider, securities commission or other regulatory authority has approved or disapproved the information contained in this news release.

For personal use only

RESULTS, COMPETENT PERSON, AND MINERAL RESOURCE ESTIMATES

Exploration Results

The references in this Presentation to historic Exploration Results for the Pinjin Gold Project were reported in accordance with Listing Rule 5.7 on 23 May 2023. The Company confirms that it is not aware of any new information or data that materially affects the information included in the previous market announcement noted above.

The references in this announcement to Exploration Results were reported in accordance with Listing Rule 5.7 in the announcements titled:

- *Sub-Audio Magnetics (SAM) geophysical data guides upcoming RC drill program at Pinjin. Diamond Drilling at Kirgella Gift and Providence to commence soon, 26 August 2025.*
- *Lighthouse Strike Extended to 1,450m. Extensive RC Program Beginning Shortly, 15 July 2025.*
- *SAM geophysical survey commencing around Lighthouse, and exploration update, 6 June 2025*
- *Farm-in at Pinjin Gold Project completed, 29 May 2025.*
- *Quarterly activities report for the quarter ending 31 March 2025, 30 April 2024*
- *Lighthouse RC program confirms primary gold mineralisation at depth, follow up drilling imminent, 15 April 2025*
- *Aircore drilling to test Lighthouse strike extensions in April, 10 March 2025*
- *Multi-kilometre target areas along strike at KalGold's Lighthouse discovery, 17 February 2025*
- *'Lighthouse' gold discovery at Pinjin: thick, high-grade gold intercepted at new greenfields find, 7 February 2025*
- *First-pass aircore drilling at Kirgella West: broad gold anomalism and mineralisation over 1,200m strike, 18 December 2024*
- *Quarterly activities report for the quarter ending 30 September 2024, 30 October 2024*
- *Providence: North plunging shallow gold mineralisation has significant potential, 7 December 2023*
- *Shallow, high-grade results extend Kirgella Gift and Providence corridor to over 1,150m of strike, 25 October 2023*
- *Thick, shear-hosted gold mineralisation intercepted at Kirgella Gift, 8 June 2023*
- *KalGold farms-in to Kirgella gold tenements and acquires Rebecca West tenure at Pinjin, 23 May 2023.*

The Company confirms that it is not aware of any new information or data that materially affects the information included in the previous market announcements noted above.

Competent Person Statement

The information in this presentation that relates to Exploration Targets, Exploration Results, Mineral Resources or Ore Reserves is based on information compiled by Dr Matthew Painter, a Competent Person who is a Member of the Australian Institute of Geoscientists. Dr Painter is the Managing Director and Chief Executive Officer of Kalgoorlie Gold Mining Limited (KalGold) and has sufficient experience that is relevant to the style of mineralisation and type of deposit under consideration and to the activity being undertaken to qualify as a Competent Person as defined in the 2012 edition of the Australasian Code for Reporting of Exploration Results, Mineral Resources and Ore Reserves.

Dr Painter consents to the inclusion in the presentation of the matters based on his information in the form and context in which it appears. Dr Painter holds securities in Kalgoorlie Gold Mining Limited.

Mineral Resource Estimate

The references in this announcement to Mineral Resource estimates were reported in accordance with Listing Rule 5.8 in the following announcements:

- *La Mascotte gold deposit: First JORC (2012) Mineral Resource of 138,000 oz Au, 7 March 2023.*
- *First Kirgella Gift Inferred Resource of 76,400 oz from 3m, 25 July 2024.*

In accordance with ASX Listing Rule 5.23, the Company confirms that it is not aware of any new information or data that materially affects the information included in the previous market announcement noted above and that all material assumptions and technical parameters underpinning the Mineral Resource estimates in the previous market announcements continue to apply.

WESTERN AUSTRALIAN GOLD

For personal use only



Ancient landscapes

Gold-mineralised rocks
hidden by surface sediment

KalGold's key – discovering
buried **multi-million ounce**
deposits on a major gold-
mineralising structure

 **Kalgoorlie** Gold Mining

CORPORATE STRUCTURE / TEAM

Capital Structure

A\$31.7 million

Market Cap

at **A\$0.070/share**
on 10 October 2025

A\$5.0 million

Cash

30 September 2025

453.6 million

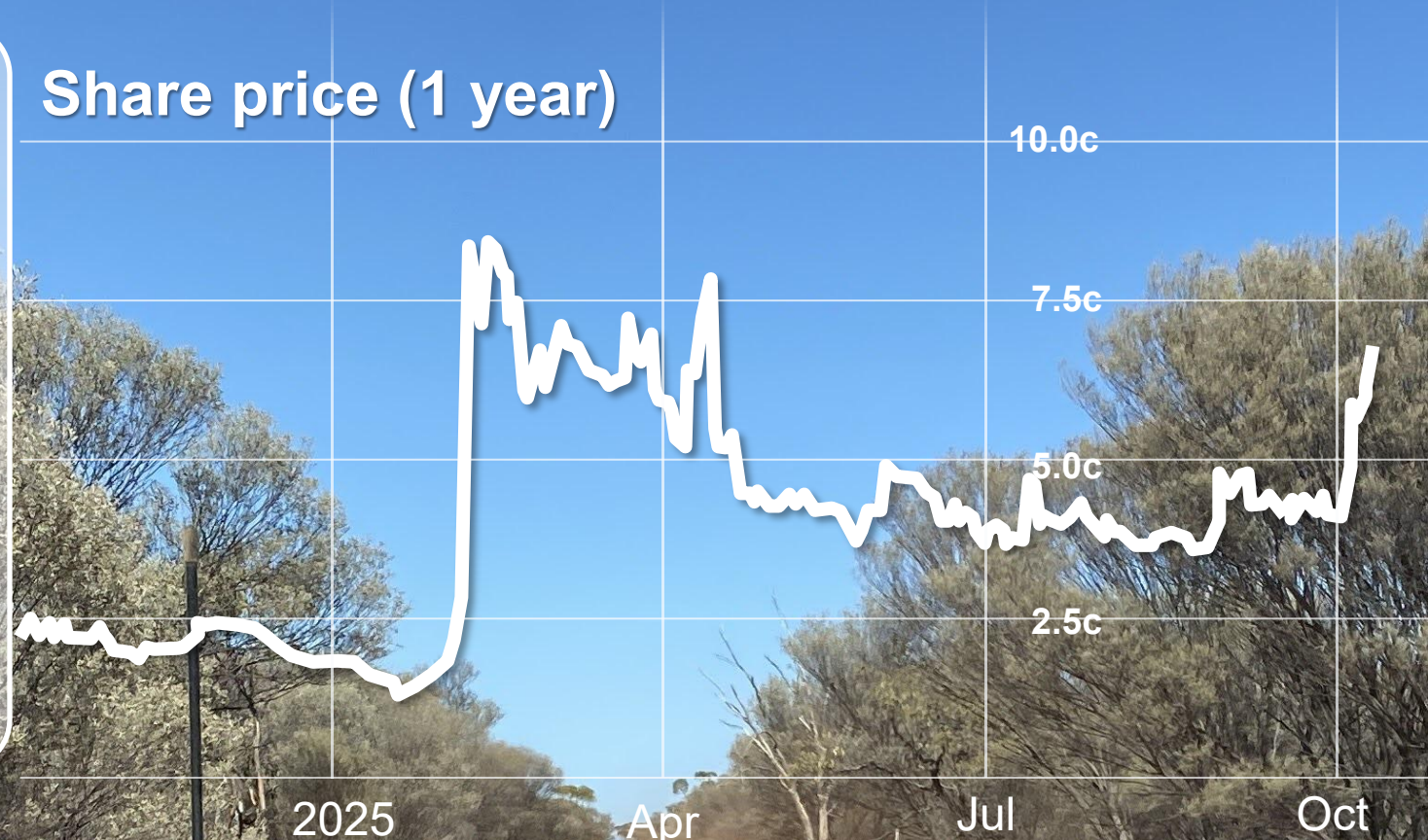
Shares on issue

Nil

Debt

30 September 2025

Share price (1 year)



Directors and Management

Pauline Gately
Non-Executive Chair

- Investment strategist, commercial focus
- 20 years investment banking
- Acquisitions, exploration, project development

Matt Painter
Managing Director and CEO

- PhD Economic Geology
- Global gold experience, multiple commodities
- 25 years technical and corporate experience

Andrew Penkethman
Non-Executive Director

- Geologist, global experience
- 25 years technical and corporate experience
- Managing Director of Ardea Resources Limited

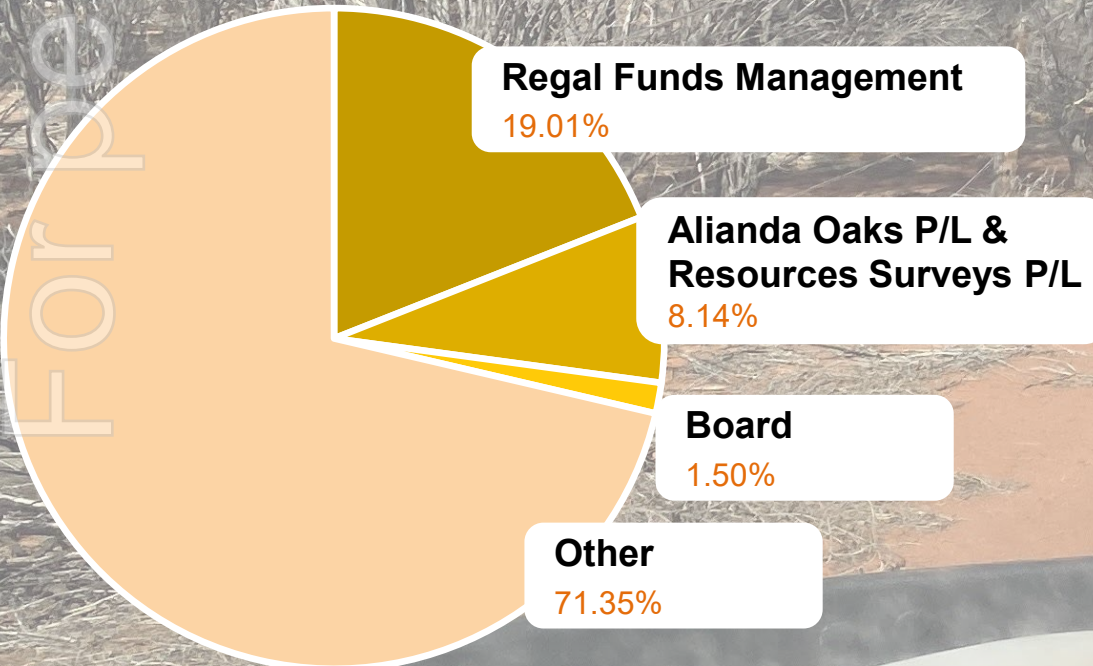
Graeme Smith
Company Secretary/CFO

- Corporate governance & finance professional
- 30 years experience in the resources industry

Scott Herrmann
Exploration Manager

- Geologist, 20 years' global experience
- Gold exploration, resource development, production

Top Shareholders



GOLD RESOURCES

Shallow accessible gold deposits
an early indicator of more?

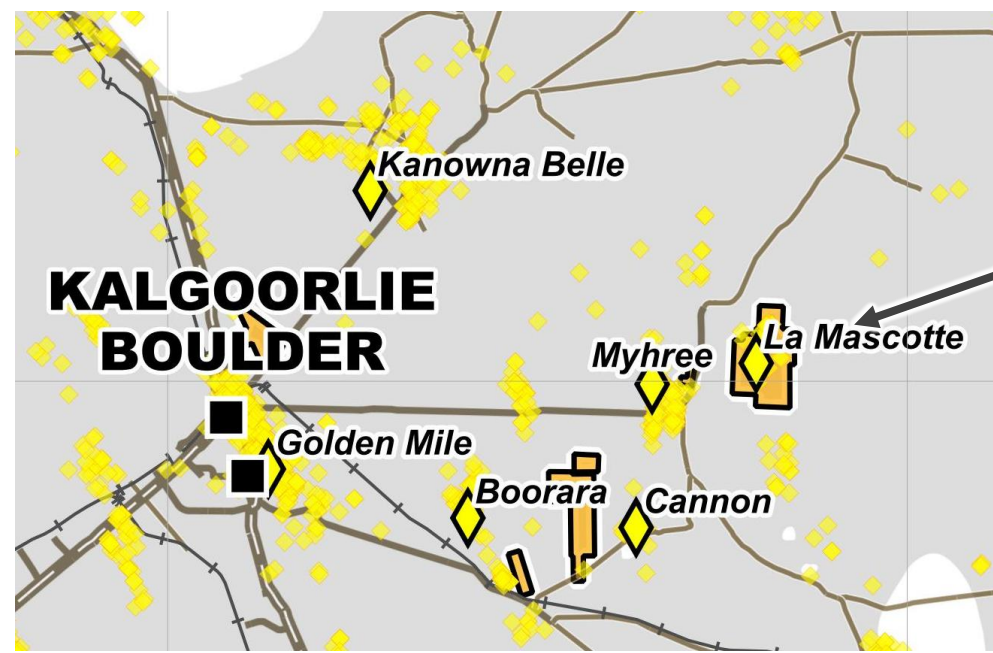
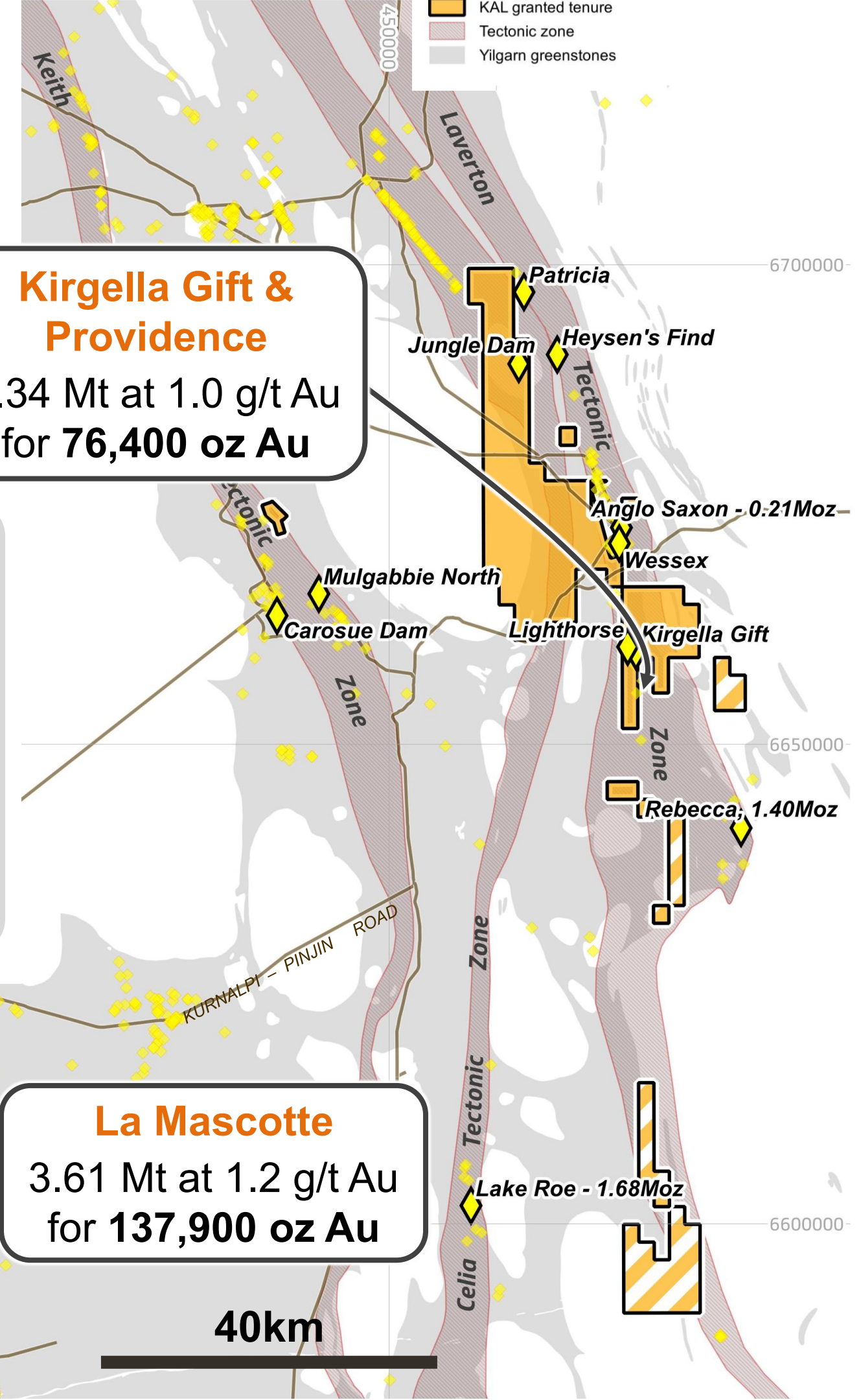
Project	Tonnes (Mt)	Au Grade (g/t)	Au (oz)	Discovery Cost per ounce
Bulong Taurus	3.61	1.2	137,900	A\$4.79
Pinjin	2.34	1	76,400	A\$4.18
Total	5.95	1.1	214,300	A\$4.57

Kirgella Gift & Providence

2.34 Mt at 1.0 g/t Au
for **76,400 oz Au**

La Mascotte

3.61 Mt at 1.2 g/t Au
for **137,900 oz Au**



For personal use only

PINJIN

GOLD PROJECT

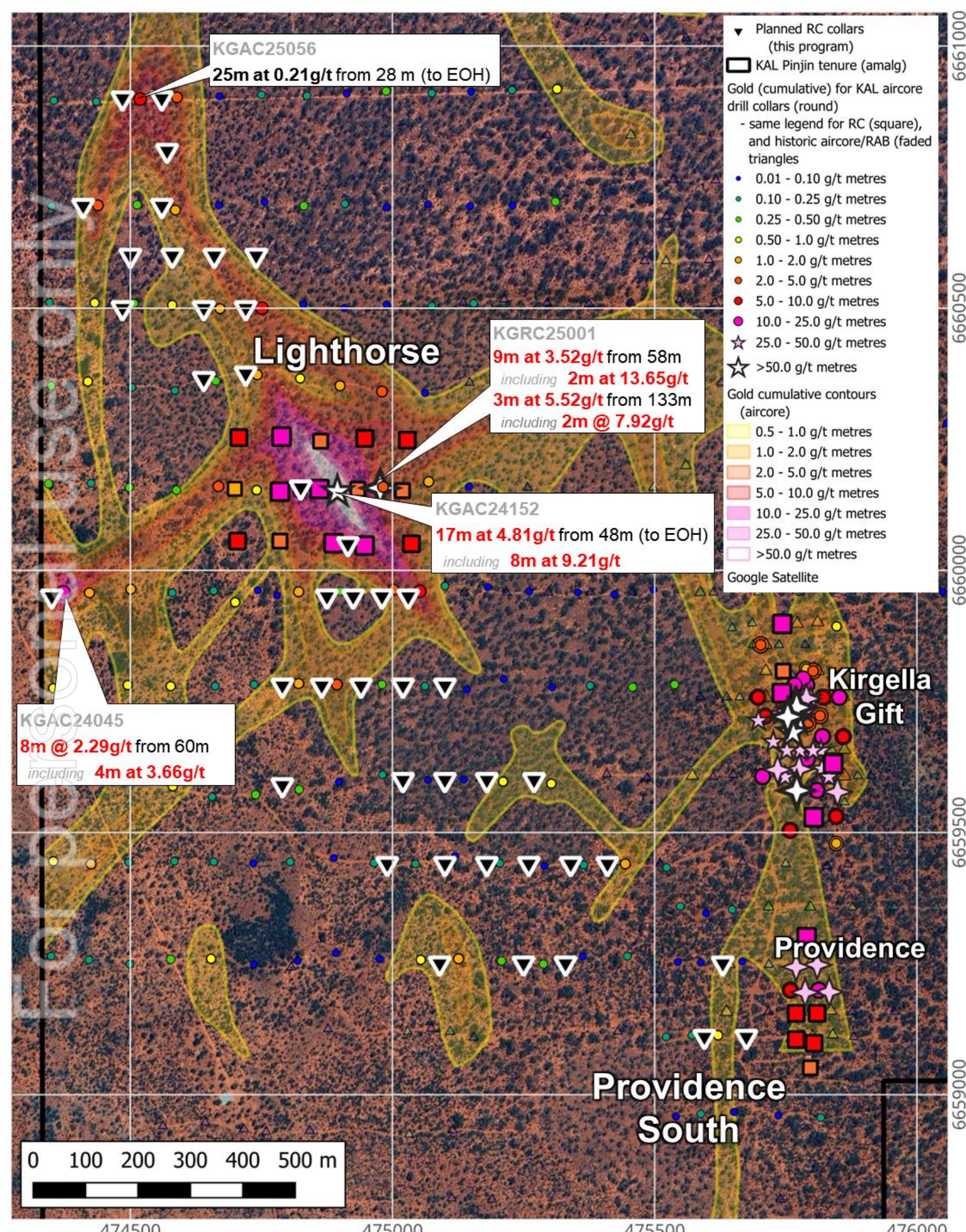


LIGHTHORSE

Thick intercepts beneath cover,
open along strike and at depth

Full extent being defined by ongoing
drilling with KalGold's
largest RC drill program

Confirmation of primary gold to prompt
high-density follow-up drilling

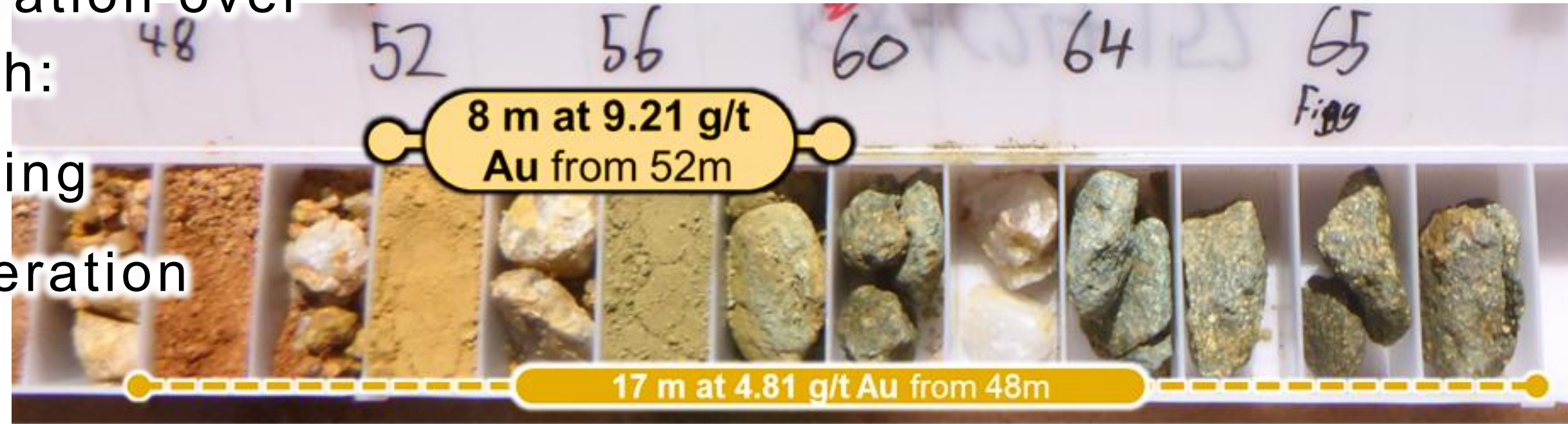


LIGHTHORSE GOLD MINERALISATION

For personal use only

Gold mineralisation and alteration over **1.6km strike**, associated with:

- Quartz (+ carbonate) veining
- Siliceous and sericitic alteration
- Sulphides
- Extensive bleaching
- Supergene enrichment

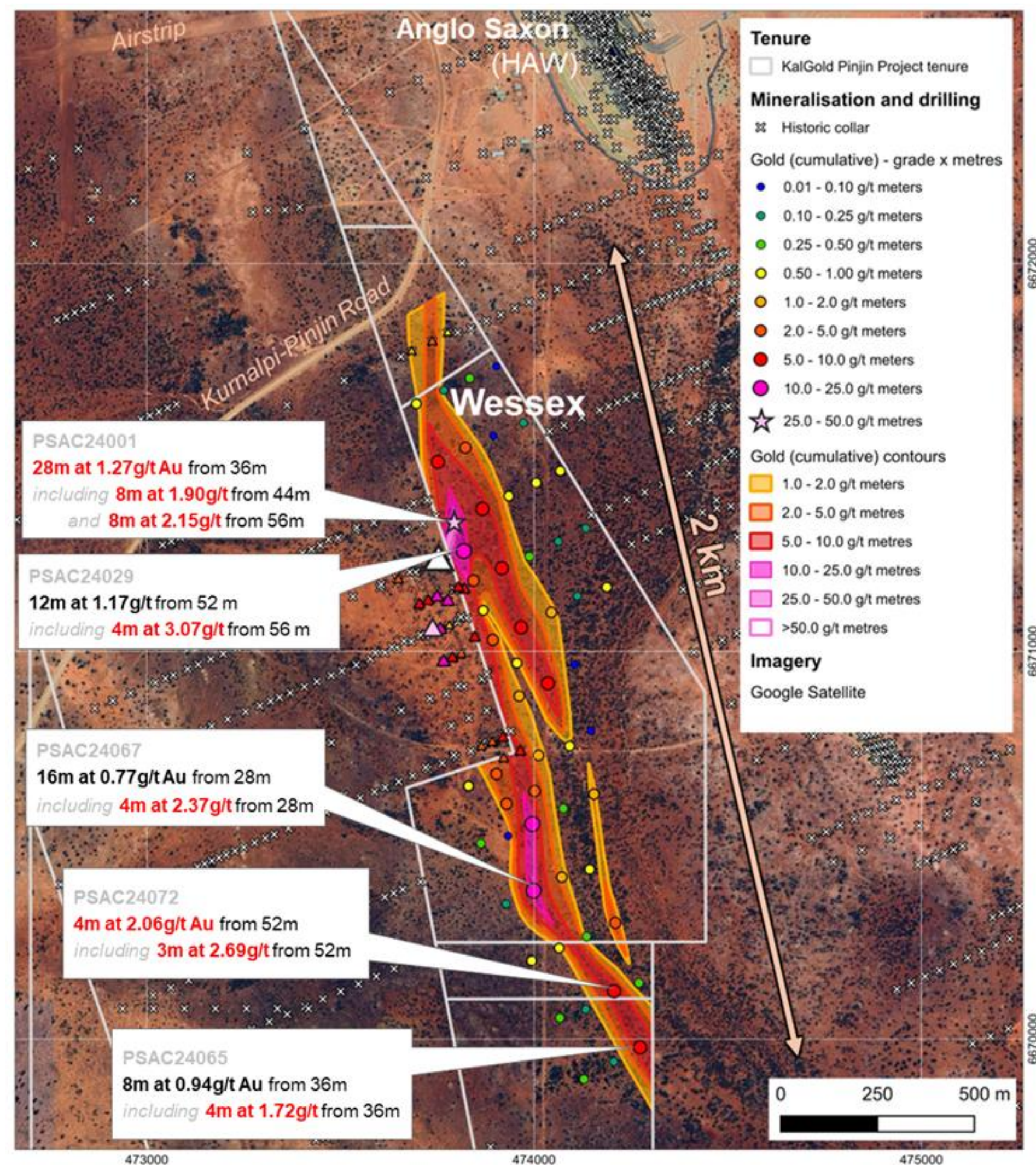


WESSEX

Gold in historic drilling to tenement boundary next to **Anglo Saxon** gold mine (HAW)

2km long, thick, shallow gold mineralisation defined by KalGold aircore programs

RC drilling completed, assays pending



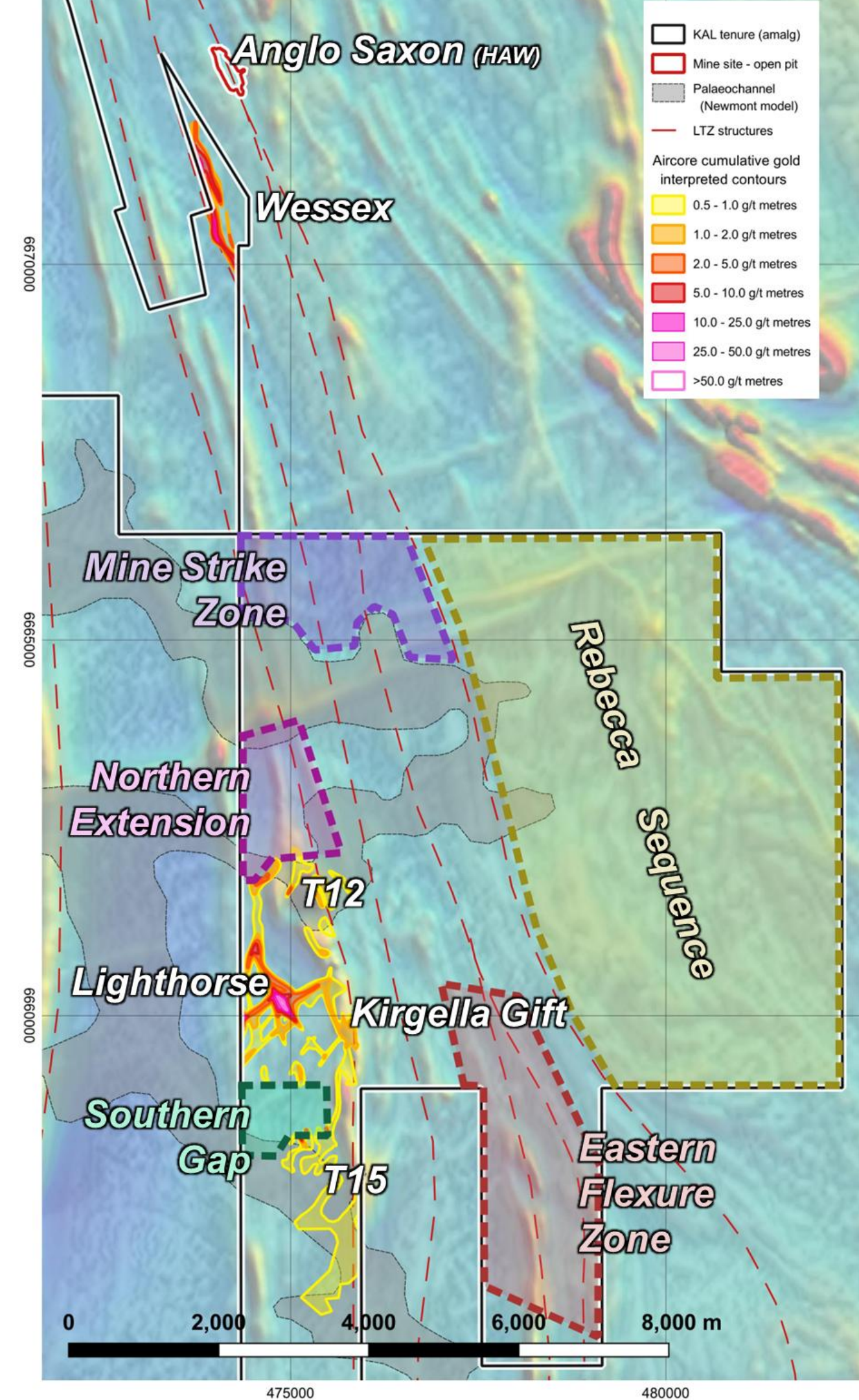
TARGETING

Numerous targets for testing

Discoveries from proven exploration technique

Only ~10% of targets tested to date

Work programs expanding



SYSTEMATIC EXPLORATION, TRANSFORMATIONAL OUTCOMES

Huge discovery potential, highly leveraged to gold price,
>200koz JORC resources near existing infrastructure

Large strategic footprint with multi-million ounce potential

Track record of discovery through money in the ground

Well-funded for extensive
exploration programs and more discovery

For personal use only