

Comet Vale Gold Project, WA – Exploration Update

Gorilla on track for pivotal December 2025 resource update at Comet Vale following more strong drilling results

- Further strong drilling results returned from the Cheer Prospect, part of the Comet Vale Gold Project in WA:
 - **15m @ 4.4g/t Au from 93m to end of hole ('EOH')** in CVEX102
 - **5m @ 3.4g/t Au from 109m** in CVEX098
- **Cheer** is one of several prospects discovered and drilled by GG8 over the past year that will be included in the upcoming Mineral Resource Estimate ('MRE') update. Key Prospects that make up this MRE and highlight drilling intercepts include:
 - Lakeview:
 - **19.0m @ 18.1 g/t Au fr. 80m LVEX018** (344 gram-metre)
 - **11.0m @ 24.8 g/t Au fr. 145m LVEX017** (273 gm)
 - **24.0m @ 10.3g/t Au fr. 200m LVEX034** (247 gm)
 - Sovereign/Sovereign North
 - **5.0m @ 66.3g/t Au fr. 399m STEX084** (332 gm)
 - **7.0m @ 19.0g/t Au fr. 49m STEX048** (133 gm)
 - **6.0m @ 22.0g/t Au fr. 70m STEX060** (132 gm)
 - Cheer:
 - **2.0m @ 126.4 g/t Au fr. 52m C31** (253 gm)
 - **18.0m @ 7.8 g/t Au fr. 50m C6** (140 gm)
 - **3.0m @ 26.0g/t Au fr. 51m CVEX006** (80 gm)
- Wireframes and drilling databases have been handed over to independent consultants to undertake the Comet Vale MRE update.
- Two RC rigs and 2 diamond rigs are currently undertaking exploration drilling at the Comet Vale Project across the Cheer, Sovereign North and Lakeview prospects (see "Next Steps" for details), preparing for future resource growth beyond the December 2025 MRE update.
- Field teams are mobilising to Mulwarrie, with resource growth drilling scheduled to start there in the coming weeks.



Gorilla Gold Mines Ltd (ASX: GG8) ('Gorilla' or 'the Company'), is pleased to advise that work has commenced on a key MRE update for its 100%-owned Comet Vale Project, located 97km north of Kalgoorlie in WA's Goldfields, following receipt of further strong drilling results from the Cheer prospect.

The updated MRE, encompassing results from drilling completed this year by Gorilla at the Lakeview, Sovereign/Sovereign North and Cheer prospects, is scheduled for December this year.

The resource and drilling status of Gorilla's key projects is summarised below:

Project	Current Resource	Status
Comet Vale	95koz @ 4.8g/t	New MRE due early Dec 25 Drilling ongoing
Mulwarrie	350koz @ 3.6g/t	Drilling restarting Nov 25
Vivien	278koz @ 4.1g/t	Drilling commencing Jan 26

Charles Hughes, Gorilla's Chief Executive Officer, commented:

"This has been an exceptional year of drilling and discoveries at the Comet Vale Project for Gorilla, which will culminate in a very significant MRE update in early December 2025.

"Comet Vale has historically produced roughly 200,000 oz at a grade of about 20 g/t Au and has a historical resource of 95koz @ 4.8 g/t Au.

"Gorilla's exploration this year has dramatically opened up the potential at Comet Vale outside of the historical mine, with major new discoveries at Sovereign North and Sovereign Deeps, Lakeview – including the King Kong and Jambo lodes – and Cheer.

"This has transformed the outlook for the project, particularly given its location on granted Mining Leases, in the heartland of Western Australia's premier Goldfields region.

"These exciting new discoveries, not yet including Happy Jack, will all make it into the impending MRE update in early December 2025, with our drilling this year having returned the highest grades and largest gram-metre intercepts ever recorded at the Comet Vale Project.

"Comet Vale has a history where past operators prioritised getting the Sovereign underground (Sand Queen) gold mine back into production as opposed to undertaking significant exploration. Gorilla has prioritised doing the exploration first to future proof, de-risk and upscale any potential re-start to mining operations at the Project.

"This is going to be a significant MRE update that will position GG8 as a significant high-grade resource base in the region, with a significant pipeline of both further resource growth opportunities and importantly; a pipeline of high-grade development opportunities across all three Projects in WA.

"Gorilla is already working on next steps for Comet Vale. This includes preparing for the next phase of resource growth drilling, where we expect to see further growth in resources from multiple prospects across the Project, and assessing priority infill drilling areas for Reserve conversions.

"We are also set to re-start resource growth drilling at the Mulwarrie Project later in November 2025 to significantly upgrade the existing 350koz resource there, whilst doing the work to convert a significant part of this resource to a Reserve.

"At the same time as all of this drilling activity, GG8 is assessing short-term, medium-term and long-term development opportunities across the Comet Vale, Mulwarrie and Vivien Projects - with the very notable observation that the Comet Vale and Vivien Projects are high-grade gold mines currently on care and maintenance where GG8 has recently or is about to add significant high grade ounces."

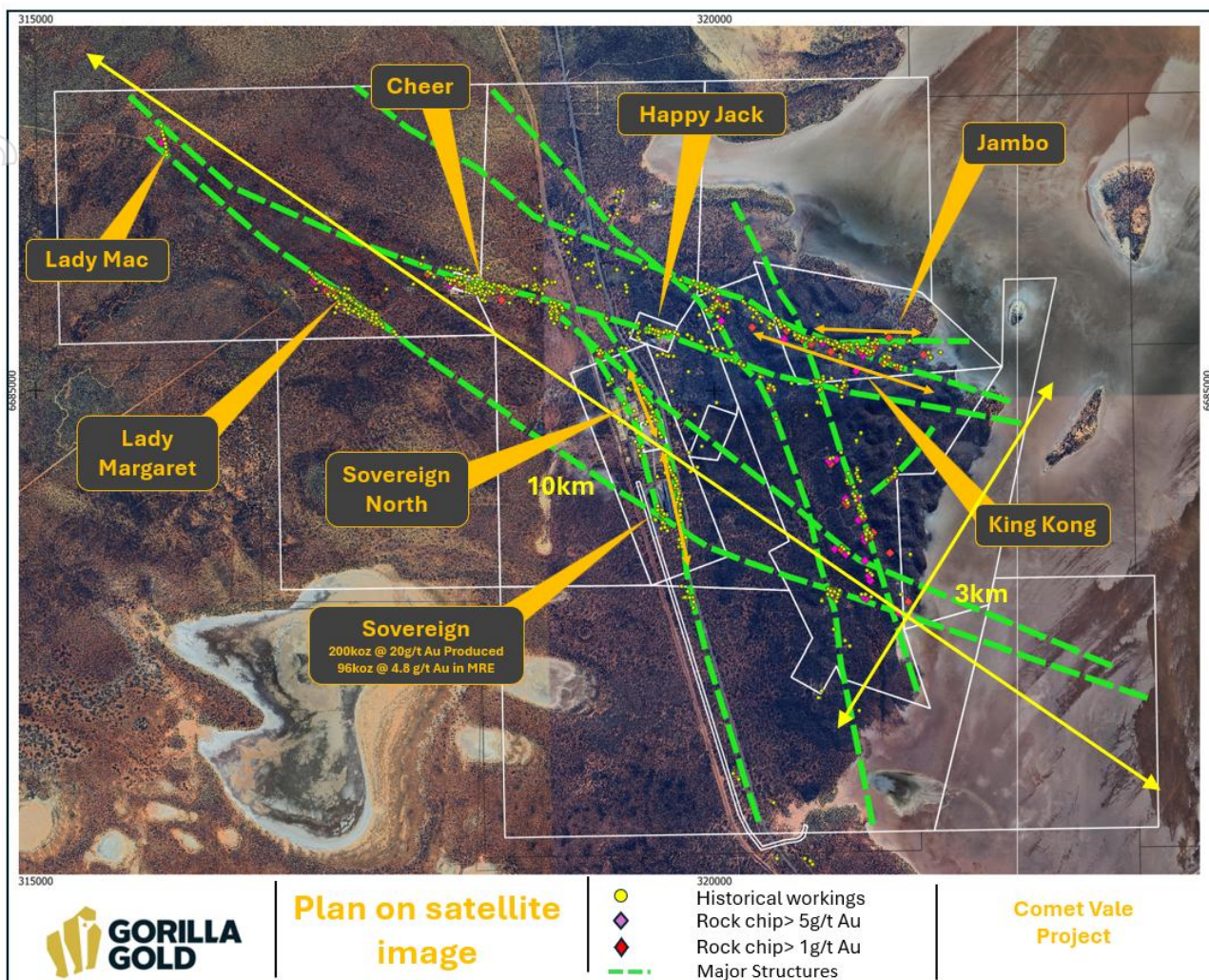


Figure 1. Map showing targets, and prospects at the Comet Vale Project

Growth and Exploration Activities at Comet Vale

The Comet Vale Project has seen historical gold production of >200koz @ >20g/t Au, with underground operations occurring as recently as 2018. The bulk of historical production comes from the Sovereign Prospect, which also hosts a MRE of 96koz @ 4.8g/t Au (composed of a high grade underground and a lower grade potential open pit component).

Gorilla made a significant high-grade gold discovery at the **Lakeview Prospect** in February 2025, with new extensional lodes also discovered at Sovereign in January 2025. The project lies within granted Mining Leases, adjacent to the Goldfields Highway, in a region with multiple operational gold mills within a 100km radius. The Company has now identified more than 10 mineralised parallel east-west structures at Comet Vale, extending over a strike length of more than 1km each with either historical mining workings or anomalous geochemistry and/or rock chips on these structures.

For personal use only

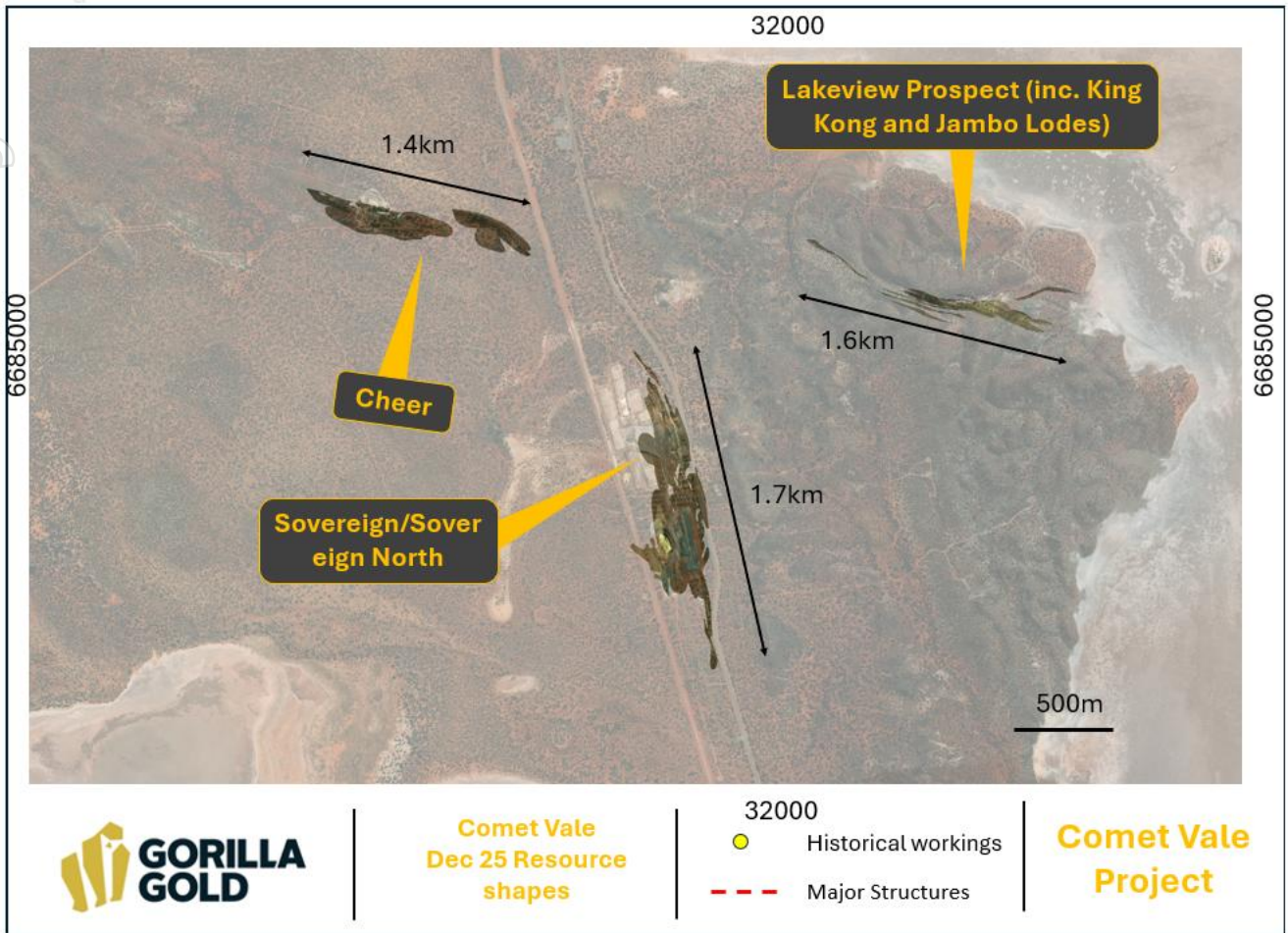


Figure 2. Map showing Comet Vale December 2025 MRE resource wireframes

For personal use only

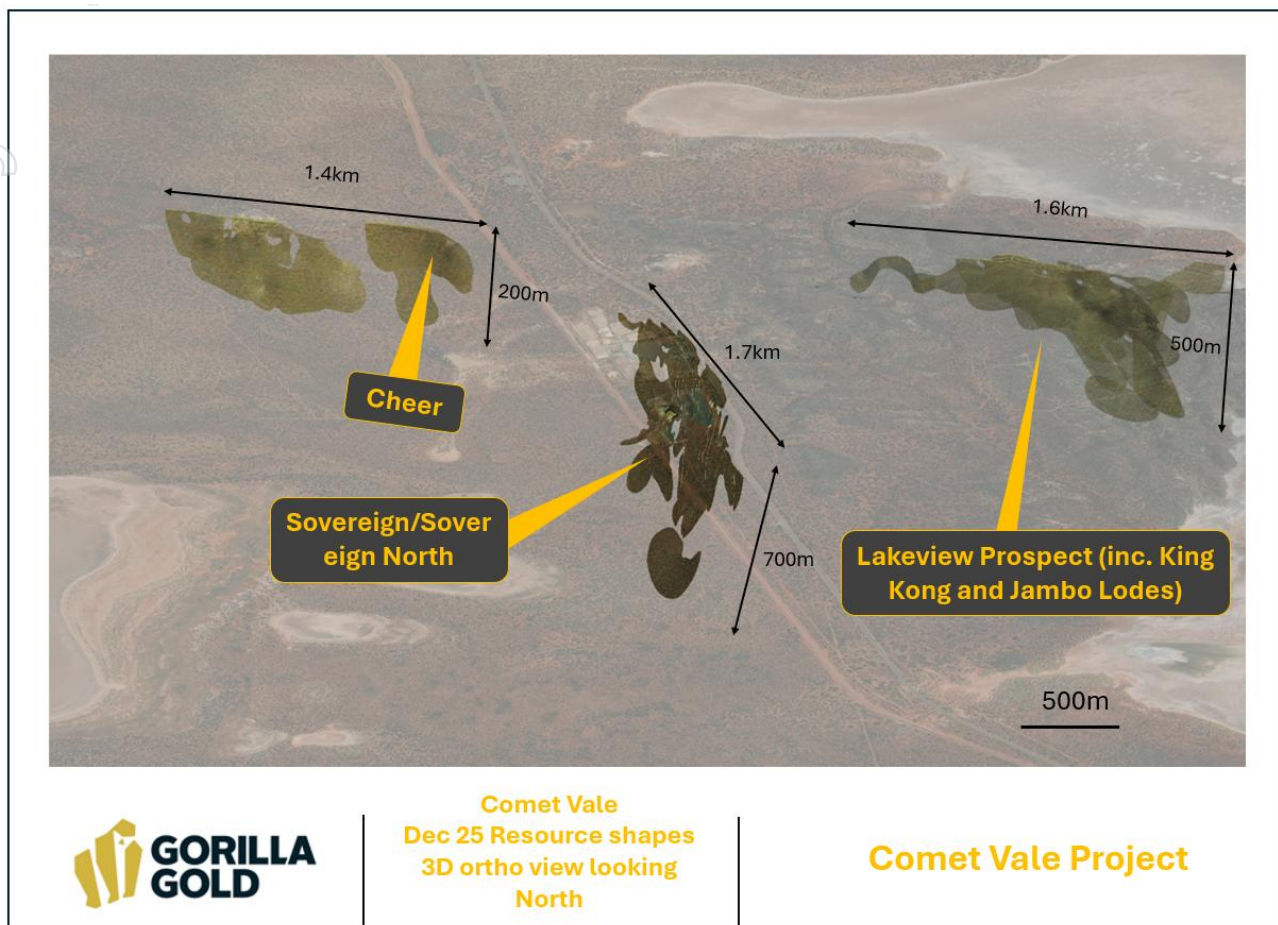


Figure 3. 3D view showing Comet Vale December 2025 MRE resource wireframes

Previous operators of the Comet Vale project employed strategies to get the Comet Vale mine into production as quickly as possible, which has left the Project with significant exploration upside. Gorilla’s immediate objective is to grow the high-grade gold resource base at the Comet Vale Project across the Lakeview, Cheer and Sovereign prospects.

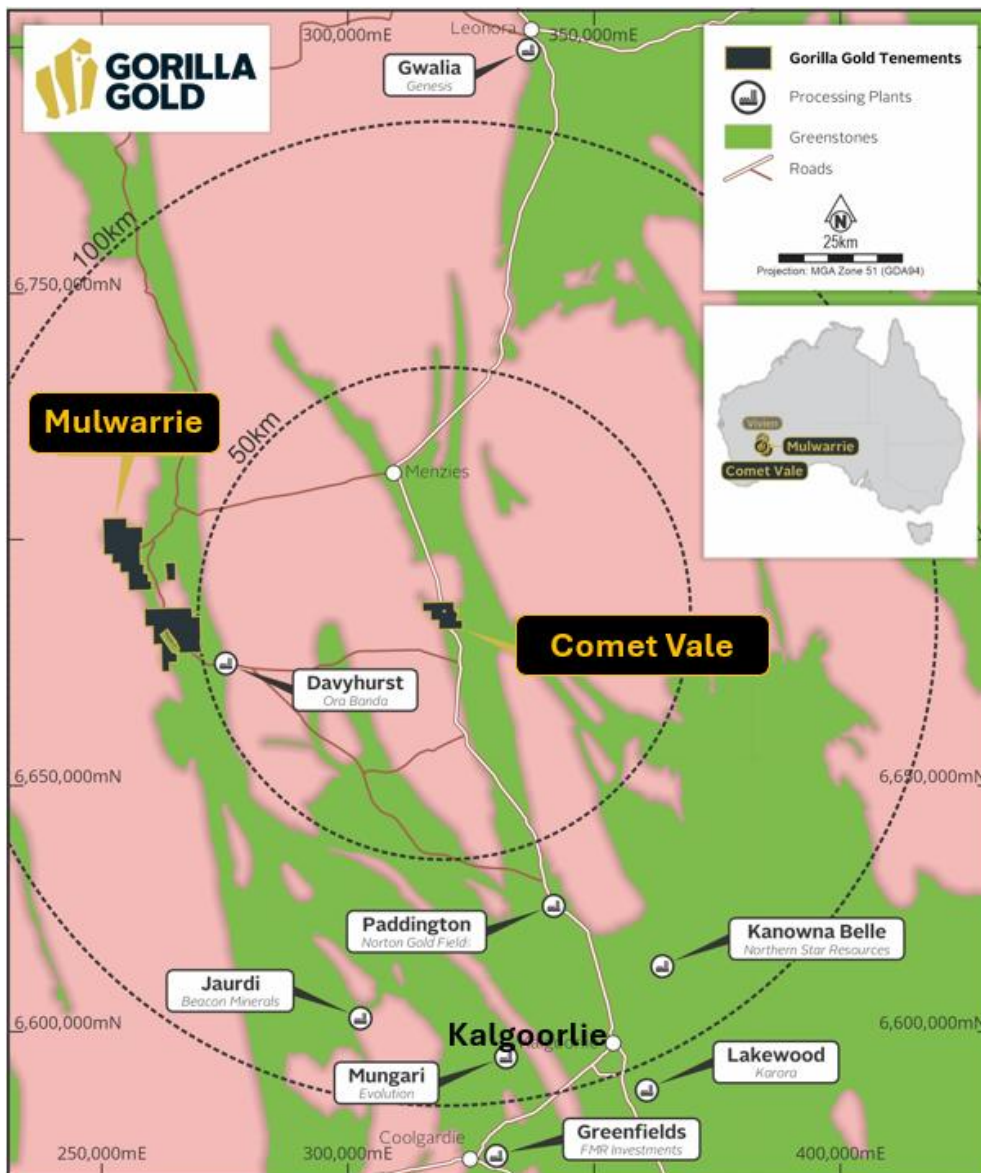


Figure 4. Overview map, Comet Vale and Mulwarrie Projects

Update from Cheer Prospect, Comet Vale Project

Minimal work has been completed historically at the Cheer Prospect. Minor historical workings from the early 1900s are present over 500m of strike and vary from open stoping at surface to small exploratory pits and shafts, with a campaign of shallow drilling by various companies in the 1990s. A major East-West fault system, associated with the Silverback Trend is developed in mafic stratigraphy.

Gorilla targeted extensions to previous drilling intercepts in a maiden drilling program in October 2024 and intersected significant gold mineralisation. Ongoing drilling at Cheer has extended mineralisation along strike to a total of 1.2km and a depth of 200m. Mineralisation is open along strike and at depth.

The mineralisation encountered is associated with quartz veining, pyrrhotite and pyrite sulphide development within quartz-carbonate veins and surrounding biotite-chlorite-actinolite altered and strongly deformed mafic units associated with the Silverback structure.

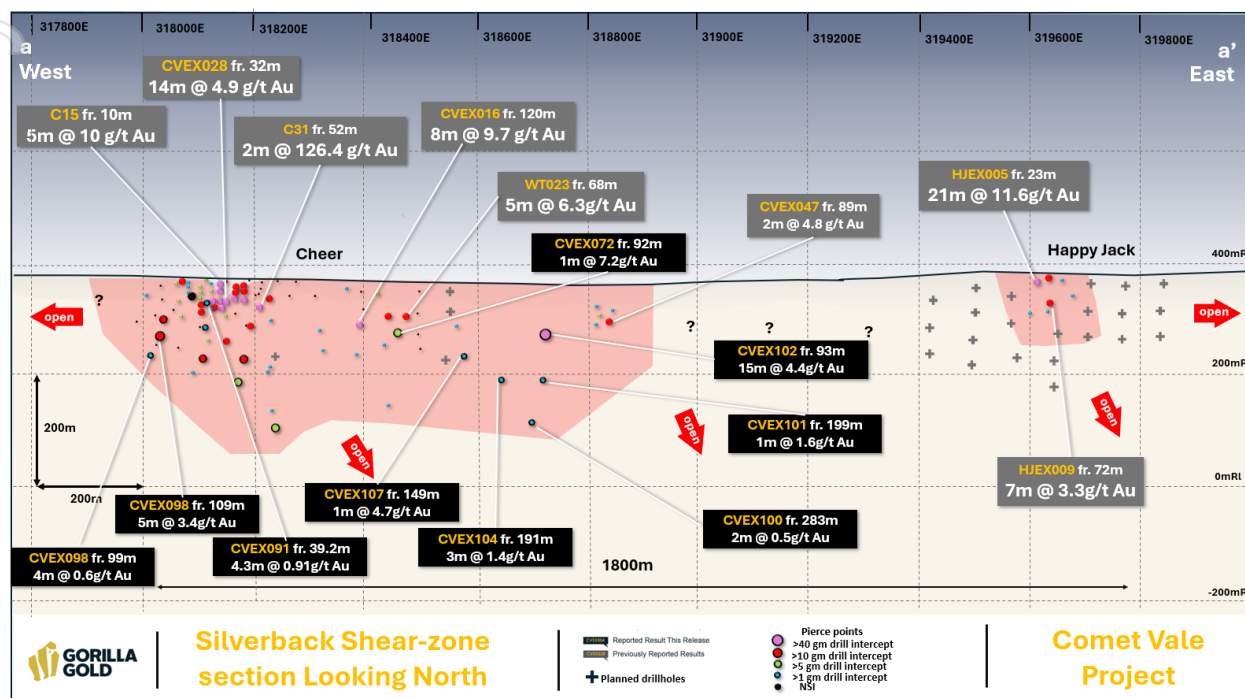


Figure 5. Cheer/Happy Jack Long Section, Looking North

Hole ID	From	To	interval	Au g/t	Notes
CVEX091	39.2	43.5	4.3	0.9	
CVEX097	97.1	98.1	1.1	2.1	
CVEX098	109.0	114.0	5.0	3.4	
CVEX099	143.0	147.0	4.0	0.6	
CVEX100	283.0	285.0	2.0	0.5	
CVEX101	199.0	200.0	1.0	1.6	
CVEX102	93.0	108.0	15.0	4.4	EOH
CVEX104	142.0	144.0	2.0	1.3	
CVEX104	191.0	194.0	3.0	1.4	

Table 1. Intercepts from this release

Next Steps at Comet Vale

Gorilla is now looking past the exciting upcoming MRE update at Comet Vale and preparing for the next stages for the project. This will involve exploration and growth drilling, resource conversion drilling, and assessing the pipeline of development opportunities at the Project now and subsequent to the December 2025 MRE update.

GG8 is currently targeting 4 high priority exploration areas at the Comet Vale Project:

1. The intersection of the Silverback and Sovereign Shear zones (Figure 6 below, shape 1), which sits under thin sand cover between the Cheer resource shapes and the Happy Jack discovery.
2. Lakeview West (Figure 6, shape 2), a series of shallow historical gold workings along strike to the west of Lakeview.
3. Lakeview extensions, (Figure 6, shape 3) for exploration and growth drilling, following up thick, high-grade gold intercepts along strike west and east.
4. Happy Jack (Figure 6, shape 4), following up shallow thick high grade intercepts at depth and along strike.

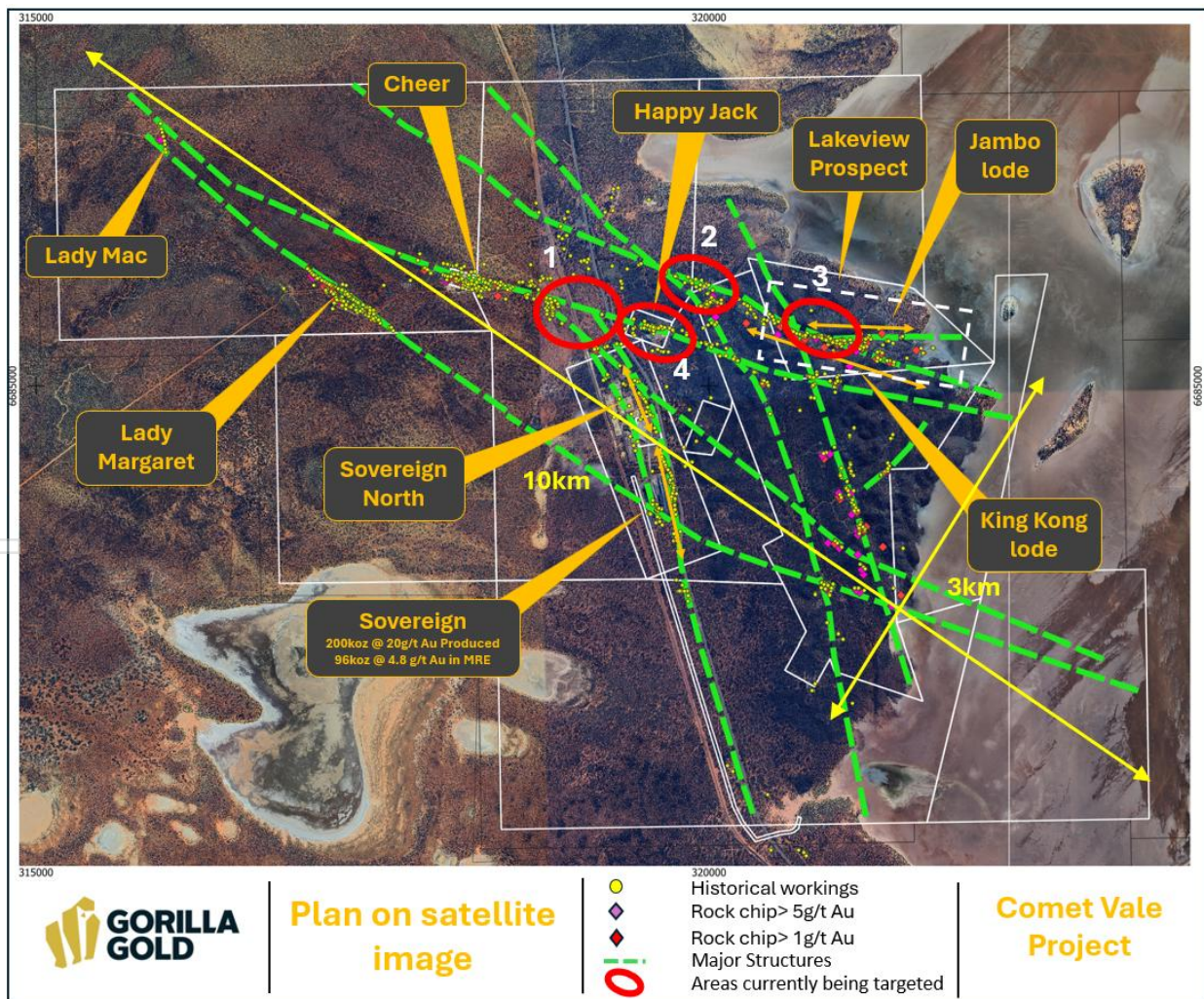


Figure 6. Map showing current target areas

In addition to these high priority targets, GG8 also has a pipeline of exploration opportunities at the Project which are being scheduled or permitted and will be scheduled once permitting is received, including Sovereign South (Figure 7, shape 1), Lady Margaret (Figure 7, shape 2), Lady Mac, (Figure 7, shape 3) Silverback (Figure 7, shape 4), Sovereign Footwall (Figure 7, shape 5), Lady M Extended (Figure 7, shape 6) Silverback east (Figure 7, shape 7), Bonobo (Figure 7, shape 8), Kerchack (Figure 7, shape 9).

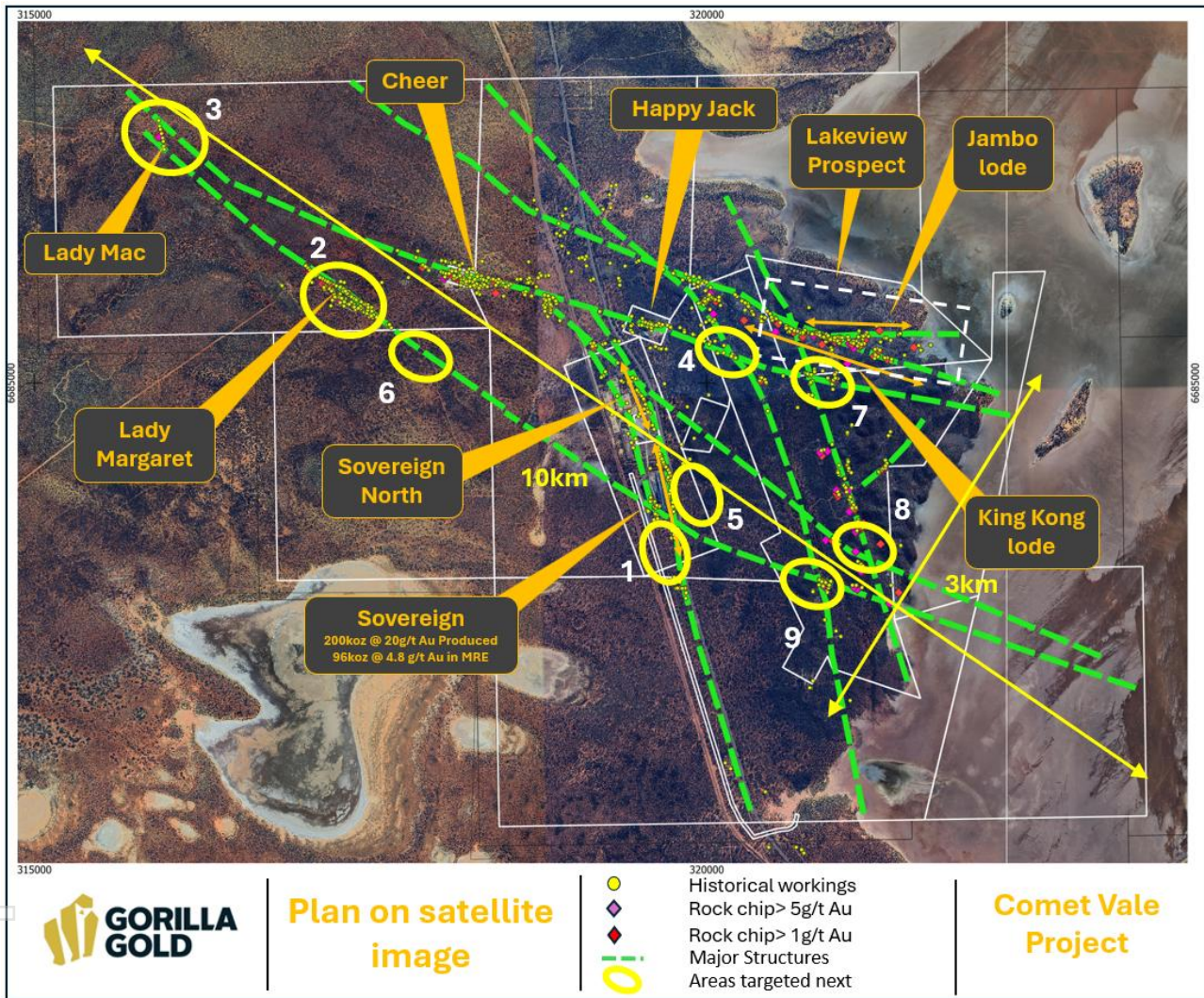


Figure 7. Map showing next phase of exploration targets at Comet Vale

At the same time as the exploration and resource growth drilling, GG8 is targeting the area immediately below the end of the decline at Sovereign for infill drilling where high grades exist in inferred category and where a potential short term development opportunity exists (Figure 8).

For personal use only



Figure 8. Map showing immediate conversion drilling and development target at Comet Vale

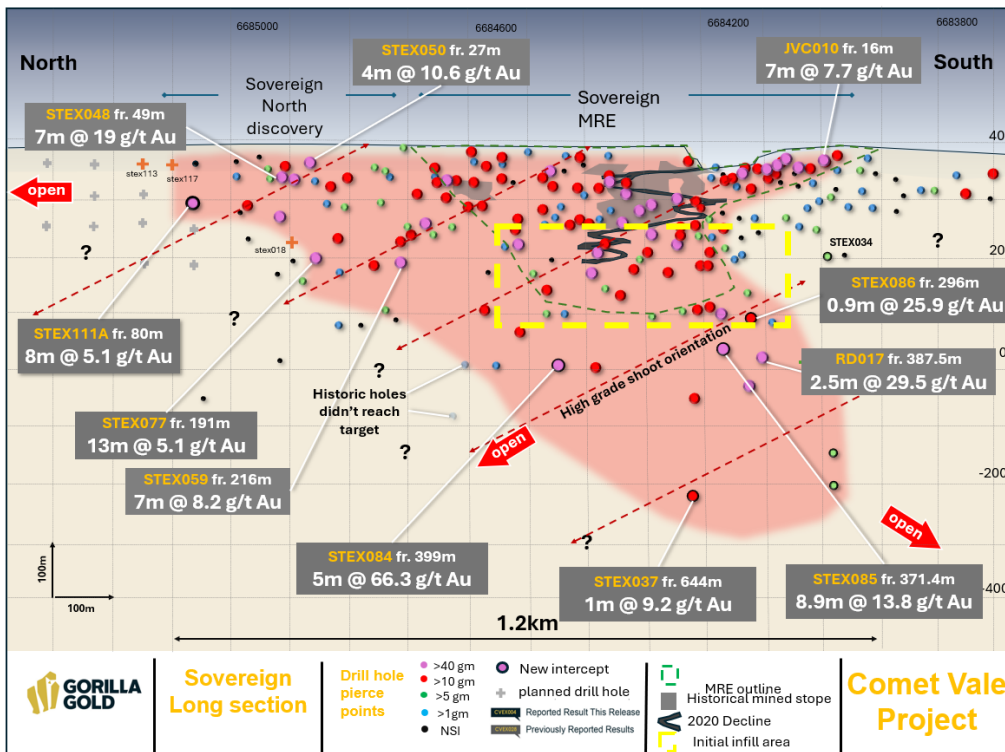
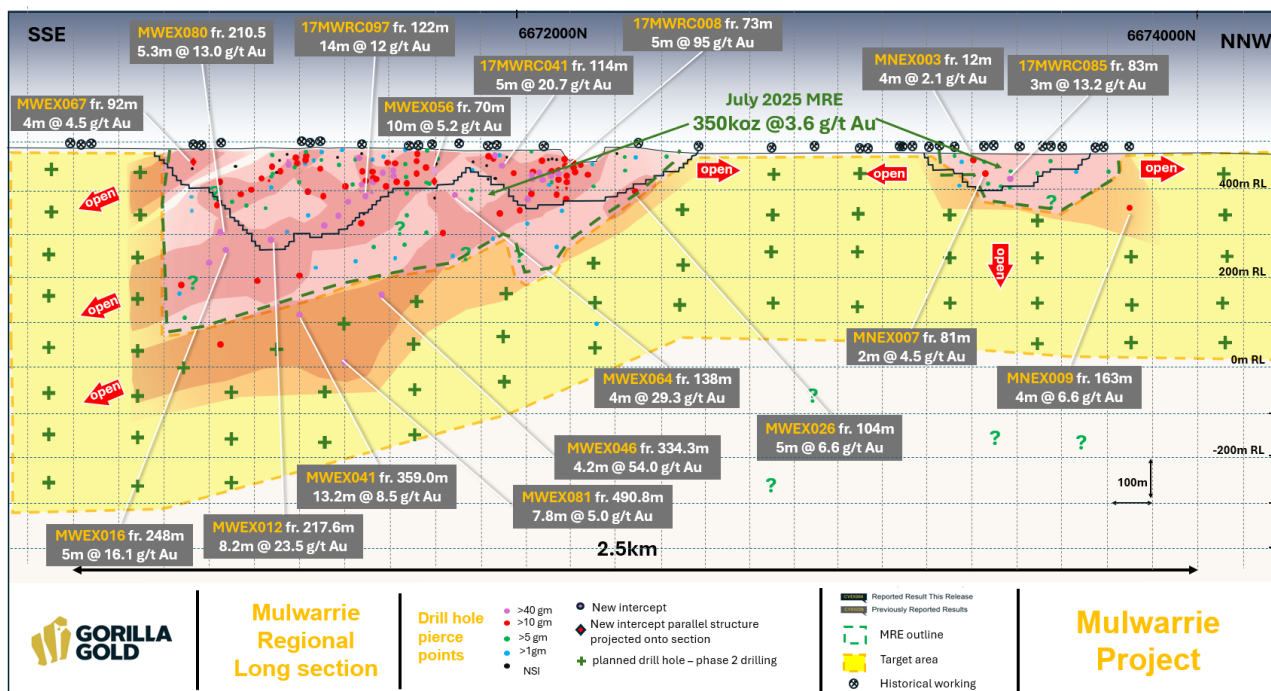


Figure 9. Long section showing immediate conversion drilling and development target at Comet Vale, immediately adjacent to existing underground infrastructure.

Next Steps at Mulwarrie Project

Gorilla has mobilised a field team into the Mulwarrie Project to begin a resource growth drilling campaign with a view to materially increasing the currently stated MRE and increasing the indicated portion of the MRE.

The initial drilling campaign will focus down plunge and in between resource blocks (Figure 10).



This announcement has been authorised and approved for release by the Board.

Investor Enquiries
 Charles Hughes
 Chief Executive Officer
admin@gg8.com.au

Media Inquiries
 Nicholas Read
 Read Corporate
info@readcorporate.com.au

Competent Person's Statement:

The information in this announcement relates to exploration results for the Comet Vale Project which Mr. Charles Hughes has reviewed and approves. Mr. Hughes, who is an employee of Gorilla Gold Mines Ltd, a professional geoscientist and a Member of the Australian Institute of Geoscientists. Mr. Hughes has sufficient experience relevant to the style of mineralisation and type of deposits under consideration, and to the activities which have been undertaken to qualify as a Competent Person as defined in the 2012 Edition of the Joint Ore Reserves Committee (JORC) Australasian Code for Reporting of Exploration results, Mineral Resources and Ore Reserves. Mr. Hughes consents to the inclusion in this announcement of the matters based on this information in the form and context in which it appears.

Specific exploration results referred to in this announcement were originally reported in the following Company announcements in accordance with ASX Listing Rule 5.7:

Title	Date
High Priority Surface Geochem Targets - Comet Vale/Mulwarrie	17 October 2025
Mulwarrie High Grade Step Outs	3 October 2025
Camp Scale Gold System Emerges at Comet Vale	8 September 2025
High Grade Discovery at Happy Jack	21 August 2025
Bonanza Grades from Sovereign	19 August 2025
Comet Vale Drilling Update	14 August 2025
Results from Initial Metallurgy Testwork at Lakeview	5 August 2025
Lakeview Drilling Update	7 July 2025
Update for Comet Vale and Mulwarrie	2 July 2025
Lakeview Update	6 June 2025
Parallel Structure Discovered at Lakeview	19 May 2025
Lakeview Update	8 May 2025
Lakeview Extended 125m Along Strike	17 April 2025
Further Intercepts from Lakeview Prospect	21 March 2025
Further High-Grade Hits from Lakeview & Sovereign Prospects	17 March 2025
Lakeview High-Grade Intercepts Grow Mineralisation	28 February 2025
Gold Intercepts from New Prospects at Comet Vale and Vivien	24 February 2025
Maiden Gold Drilling Results at Cheer	6 November 2024
LRL Set to Acquire Vivien Project and 100% of Comet Vale	17 July 2024
Comet Vale Mineral Resource Estimate	11 April 2023

The Company confirms that it is not aware of any information or data that materially affects the information included in the said original announcements and the form and context in which the Competent Persons' findings are presented have not materially modified from the original market announcements.

The current Mineral Resource Statement for the Comet Vale Project:

Comet Vale Depleted Resource as of 03/09/2020, Au>=0.5g/t (OP) and Au>=2.5g/t (UG)			
Category	Tonnage	Au Grade (g/t)	Au Ounces
Indicated	310,868	5.61	56,027
Inferred	308,620	4.00	39,683
Total	619,489	4.81	95,710

The Company is not aware of any new information or data that materially affects the information as previously released on 11 April 2023 and all material assumptions and technical parameters underpinning the estimates continue to apply and have not materially changed.

The current Mineral Resource Statement for the Mulwarrie Project:

Mulwarrie Mineral Resource Estimate Summary (0.5g/t cut-off Open pit, 1.1 g/t Underground)			
Category	Tonnage (Mt)	Au Grade (g/t)	Au Ounces
Inferred	1.3	2.8	110,000
Indicated	1.8	4.2	240,000
Total	3	3.6	350,000

The Company confirms that it is not aware of any new information or data that materially affects the information as previously released on 4 August 2025 and all material assumptions and technical parameters underpinning the estimate continue to apply and have not materially changed.

APPENDIX 1 NEW COLLAR INFORMATION COMET VALE

Prospect	Hole_ID	Depth	Hole_Type	Grid	East	North	RL	dip	azi
Happy Jack	HJEX005	102	RC	GDA94z51	319627	6685349	396	55	22
Happy Jack	HJEX009	100	RC	GDA94z51	319672.	6685460	393	55	200
Happy Jack	HJEX007	108	RC	GDA94z51	319651	6685408	392	54	23
Happy Jack	HJEX001	280	RC	GDA94z51	319598	6685320	393	54	22
Happy Jack	HJEX002	156	RC	GDA94z51	319680	6685371	396	54	32
Happy Jack	HJEX003	180	RC	GDA94z51	319634	6685360	396	54	21
Happy Jack	HJEX006	144	RC	GDA94z51	319644	6685391	395	55	23
Happy Jack	HJEX008	100	RC	GDA94z51	319674	6685428	393	54	22

APPENDIX 2 JORC TABLES

Section 1 Sampling Techniques and Data

(Criteria in this section apply to all succeeding sections.)

Criteria	JORC Code explanation	Comments
Sampling techniques	<ul style="list-style-type: none"> Nature and quality of sampling (e.g. cut channels, random chips, or specific specialised industry standard measurement tools appropriate to the minerals under investigation, such as down hole gamma sondes, or handheld XRF instruments, etc). These examples should not be taken as limiting the broad meaning of sampling. Include reference to measures taken to ensure sample representivity and the appropriate calibration of any measurement tools or systems used. Aspects of the determination of mineralisation that are Material to the Public Report. In cases where 'industry standard' work has been done this would be relatively simple (e.g. 'reverse circulation drilling was used to obtain 1 m samples from which 3 kg was pulverised to produce a 30 g charge for fire assay'). In other cases, more explanation may be required, such as where there is coarse gold that has inherent sampling problems. Unusual commodities or mineralisation types (e.g. submarine nodules) may warrant disclosure of detailed information. 	<ul style="list-style-type: none"> RC drilling - samples collected as 4m composites and in areas where interesting lithology, alteration, mineralisation or veining was encountered, 1m splits were taken. Composite samples are collected from samples piles, 1m splits are taken for every metre from the cyclone with duplicate samples taken at the instruction of the field geologist from the second chut on the cone. DD drilling has samples collected as half core in intervals between 0.3-1m based on lithology. Samples collected by GG8 field crew and submitted to ALS Laboratory in Kalgoorlie, WA. All samples are considered to be representative for the manner in which they are used. The samples were analysed using the photon assay method which uses a 0.5kg sample and requires minimal handling. The samples are riffle split at the lab and crushed to 80% passing 2mm to ensure homogeneity as uniform sample distribution is important to a quality analysis.
Drilling techniques	<ul style="list-style-type: none"> Drill type (e.g. core, reverse circulation, open-hole hammer, rotary air blast, auger, Bangka, sonic, etc) and details (e.g. core diameter, triple or standard tube, depth of diamond tails, face-sampling bit or other type, whether core is oriented and if so, by what method, etc). 	<ul style="list-style-type: none"> RC drilling was completed by several contractors using multiple modern RC rigs capable of significant drill depths. DD drilling was completed by contractors using multiple modern DD rigs. All drill rigs utilised by GG8 are industry best standard.
Drill sample recovery	<ul style="list-style-type: none"> Method of recording and assessing core and chip sample recoveries and results assessed. 	<ul style="list-style-type: none"> RC sample recovery was qualitatively assessed by the field geologists. Good recoveries were had. DD recovery measured actual core length between drillers blocks to the nearest cm. Sample weights are recorded by the laboratory and average 3kg.
	<ul style="list-style-type: none"> Measures taken to maximise sample recovery and ensure representative nature of the samples 	<ul style="list-style-type: none"> Sample depths were cross-checked regularly. The cyclone was regularly cleaned to ensure no material build up and sample material was checked for any potential downhole contamination. The drilling sample recoveries/quality are acceptable and are appropriately representative for the style of mineralisation.
	<ul style="list-style-type: none"> Whether a relationship exists between sample recovery and grade and whether sample bias may have occurred due to preferential loss/gain of fine/coarse material. 	<ul style="list-style-type: none"> no obvious sample recovery biases or biases related to loss or gain of fines have been identified.

For personal use only

Logging	<ul style="list-style-type: none"> Whether core and chip samples have been geologically and geotechnically logged to a level of detail to support appropriate Mineral Resource estimation, mining studies and metallurgical studies. 	<ul style="list-style-type: none"> Logged for geology on the 1m intervals with chips washed and stored in chip trays by the geologist. Logging was inputted directly into the onsite laptops using suitable Company logging. DD core stored in trays with every metre logged. Logging is of a qualitative nature.
	<ul style="list-style-type: none"> Whether logging is qualitative or quantitative in nature. Core (or costean, channel, etc) photography. 	<ul style="list-style-type: none"> RC chips and DD were logged for lithology, colour, weathering, texture and minerals present. Structural measurements and geotechnical data were recorded on DD core
	<ul style="list-style-type: none"> The total length and percentage of the relevant intersections logged. 	<ul style="list-style-type: none"> N/A
Sub-sampling techniques and sample preparation	<ul style="list-style-type: none"> If core, whether cut or sawn and whether quarter, half or all cores taken. 	<ul style="list-style-type: none"> Core is sawn with half cores taken for assay
	<ul style="list-style-type: none"> If non-core, whether riffled, tube sampled, rotary split, etc and whether sampled wet or dry. 	<ul style="list-style-type: none"> RC drilling single 1 metre splits were automatically taken at the time of drilling by a cone splitter attached to the cyclone. 4m composite samples were taken from sample piles. Samples have been dry. Samples are then riffle split at the lab into 0.5kg samples and crushed to 2mm prior to photon assay with a particle size distribution test to ensure 80% passing the 2mm threshold.
	<ul style="list-style-type: none"> For all sample types, the nature, quality and appropriateness of the sample preparation technique. 	<ul style="list-style-type: none"> The technique was appropriate for the work undertaken. During RC logging samples that showed mineralisation, veining or alteration had 1m split samples collected. 1m split samples are later taken from where 4m composites show >0.2g/t gold anomalism. During DD logging any sulphide veining or alteration were sampled.
	<ul style="list-style-type: none"> Quality control procedures adopted for all sub-sampling stages to maximise representivity of samples. 	<ul style="list-style-type: none"> QAQC reference samples and duplicates were submitted by GG8. In house standards and blanks were also inserted by ALS.
	<ul style="list-style-type: none"> Measures taken to ensure that the sampling is representative of the in-situ material collected, including for instance results for field duplicate/second-half sampling. 	<ul style="list-style-type: none"> 1m samples are automatically bagged from the cyclone, field duplicates are taken from a second chute off the splitter. DD duplicates are taken
	<ul style="list-style-type: none"> Whether sample sizes are appropriate to the grain size of the material being sampled. 	<ul style="list-style-type: none"> All RC samples are collected to approximately 1-5 kg. The sample sizes taken are appropriate relative to the style of mineralisation and analytical methods undertaken. DD sample size is appropriate
	<ul style="list-style-type: none"> The nature, quality and appropriateness of the assaying and laboratory procedures used and whether the technique is considered partial or total. 	<ul style="list-style-type: none"> All samples were sent to ALS laboratory in Kalgoorlie. Photon Assay method has shown to provide quick turnaround times and high accuracy.
Quality of assay data and laboratory tests	<ul style="list-style-type: none"> For geophysical tools, spectrometers, handheld XRF instruments, etc, the parameters used in determining the analysis including instrument make and model, reading times, calibrations factors applied and their derivation, etc. 	<ul style="list-style-type: none"> All analytical results listed are from an accredited laboratory using photon assay method with fire assay as a check method.
	<ul style="list-style-type: none"> Nature of quality control procedures adopted (e.g. standards, blanks, duplicates, external laboratory checks) and whether acceptable levels of accuracy (i.e. lack of bias) and precision have been established. 	<ul style="list-style-type: none"> Certified Reference Materials (CRMs) are included in each batch to ensure the reliability of the assay. These CRMs, such as OREAS254C, OREAS230, and OREAS241, are specifically chosen for photon assay to maintain quality standards and were evaluated against published certificates. The standard deviation was minimal for samples. Selected photon assays over a range of grades and from different parts of orebodies are umpire checked with Fire Assays and so far shows no material difference in reported grades.

For personal use only

Verification of sampling and assaying	<ul style="list-style-type: none"> The verification of significant intersections by either independent or alternative company personnel. 	<ul style="list-style-type: none"> External verification has not been carried out, but values were checked against logging and photographs to ensure the intersected Au values are in line with logged alteration, mineralisation or veining. Significant intercepts have been verified by the Exploration Manager, the CEO and Principal consulting geologist.
	<ul style="list-style-type: none"> The use of twinned holes 	<ul style="list-style-type: none"> No twinned holes at this stage
	<ul style="list-style-type: none"> Documentation of primary data, data entry procedures, data verification, data storage (physical and electronic) protocols. 	<ul style="list-style-type: none"> Data was captured directly into specific geological logging software. Assay files have been sent directly from the lab to database manager to avoid operator errors. All physical sampling sheets are filed and scanned electronically and submissions to the lab checked to ensure that no samples are missing or incorrect IDs.
	<ul style="list-style-type: none"> Discuss any adjustment to assay data. 	<ul style="list-style-type: none"> No adjustments were made to the assay data.
Location of data points	<ul style="list-style-type: none"> Accuracy and quality of surveys used to locate drill holes (collar and down-hole surveys), trenches, mine workings and other locations used in Mineral Resource estimation. 	<ul style="list-style-type: none"> Samples were located using handheld Garmin GPS, the GPS is accurate within 3-5m.
	<ul style="list-style-type: none"> Specification of the grid system used. 	<ul style="list-style-type: none"> All collar locations and maps quoted in this Report are using the GDA1994 MGA, Zone 51 coordinate system.
	<ul style="list-style-type: none"> Quality and adequacy of topographic control. 	<ul style="list-style-type: none"> Topography based on detailed topographic surveys.
Data spacing and distribution	<ul style="list-style-type: none"> Data spacing for reporting of Exploration Results. 	<ul style="list-style-type: none"> Data spacing is varied
	<ul style="list-style-type: none"> Whether the data spacing, and distribution is sufficient to establish the degree of geological and grade continuity appropriate for the Mineral Resource and Ore Reserve estimation procedure(s) and classifications applied. 	<ul style="list-style-type: none"> N/A
	<ul style="list-style-type: none"> Whether sample compositing has been applied. 	<ul style="list-style-type: none"> Intercepts are aggregated based upon 0.5g/t Au cut-off grade and 3m of dilution material.
Orientation of data in relation to geological structure	<ul style="list-style-type: none"> Whether the orientation of sampling achieves unbiased sampling of possible structures and the extent to which this is known, considering the deposit type. 	<ul style="list-style-type: none"> The relationship between the drilling orientation and the orientation of mineralised structures is not considered to have introduced a sampling bias. Most holes have been drilled perpendicular to the main orientation of the interpreted mineralised zone.
	<ul style="list-style-type: none"> If the relationship between the drilling orientation and the orientation of key mineralised structures is considered to have introduced a sampling bias, this should be assessed and reported if material. 	<ul style="list-style-type: none"> No drilling orientation related sampling bias has been identified at the Project. Some orientation changes were made to historic holes, and the main structure was intersected at the interpreted depth.
Sample security	<ul style="list-style-type: none"> The measures taken to ensure sample security. 	<ul style="list-style-type: none"> Samples were transported from the field to the lab by GG8 personnel.
Audits or reviews	<ul style="list-style-type: none"> The results of any audits or reviews of sampling techniques and data. 	<ul style="list-style-type: none"> GG8 undertakes continuous audits and reviews of all its field processes.

Section 2 Reporting of Exploration Results

(Criteria listed in the preceding section also apply to this section.)

Criteria	JORC Code explanation	Commentary
Mineral tenement and land tenure status	<ul style="list-style-type: none"> Type, reference name/number, location and ownership including agreements or material issues with third parties such as joint ventures, partnerships, overriding royalties, native title interests, historical sites, wilderness or national park and environmental settings. 	<p>COMET VALE Gorilla Gold Mines Ltd is in a Joint Venture with Sand Queen Gold Mines Pty. LRL carries 51% and SQGM carries 49% of all Mining Leases at Comet Vale listed below. An overriding royalty by Reed Resources is maintained for 1% of the gold mined at Comet Vale. In July 2024 the Company announced the option for the remaining 49% for a deferred \$3M to be paid within 12 months, the option agreement was completed in September 2024.</p> <p>Kakara Part A has just been granted Native Title over the project area. The Company does not at present have any agreements with Kakara part A but are in the process of engagement.</p> <p>M29/197,M29/198,M29/199,M29/200,M29/201,M29/232,M29/235,M29/233,M29/185,M29/270,M29/52,M29/35,M29/85,M29/186,M29/321</p>
	<ul style="list-style-type: none"> The security of the tenure held at the time of reporting along with any known impediments to obtaining a licence to operate in the area. 	<ul style="list-style-type: none"> No known impediments exist with respect to the exploration or development of the tenements.
Exploration done by other parties	<ul style="list-style-type: none"> Acknowledgment and appraisal of exploration by other parties. 	<ul style="list-style-type: none"> See previous announcements. In particular ASX announcement, 13 September 2024, <i>Review of Historical Vivien and Comet Vale Databases</i>.
Geology	<ul style="list-style-type: none"> Deposit type, geological setting and style of mineralisation. 	<p>COMET VALE Archean orogenic gold mineralisation associated with major structures and mafic-ultramafic stratigraphy with intermediate intrusives adjacent to intracratonic monzogranites, gold mineralisation is associated with quartz veining, pyrrhotite, chalcopyrite, galena, sphalerite, and actinolite-biotite-chlorite alteration</p>
Drill hole information	<ul style="list-style-type: none"> A summary of all information material to the understanding of the exploration results including a tabulation of the following information for all Material drill holes: <ul style="list-style-type: none"> easting and northing of the drill hole collar elevation or RL (Reduced Level – elevation above sea level in metres) of the drill hole collar dip and azimuth of the hole down hole length and interception depth hole length. 	<ul style="list-style-type: none"> Tables reported in the announcement.

For personal use only

	<ul style="list-style-type: none"> If the exclusion of this information is justified on the basis that the information is not Material and this exclusion does not detract from the understanding of the report, the Competent Person should clearly explain why this is the case. 	<ul style="list-style-type: none"> No information material to the understanding of the exploration results has been excluded.
Data aggregation methods	<ul style="list-style-type: none"> In reporting Exploration Results, weighting averaging techniques, maximum and/or minimum grade truncations (e.g. cutting of high grades) and cut-off grades are usually Material and should be stated. 	<ul style="list-style-type: none"> Assay results reported here have been length weighted. No metal equivalent calculations were applied.
	<ul style="list-style-type: none"> Where aggregate intercepts incorporate short lengths of high-grade results and longer lengths of low grade results, the procedure used for such aggregation should be stated and some typical examples of such aggregations should be shown in detail. 	<ul style="list-style-type: none"> All samples were 1m or 4m samples were reported as returned.
	<ul style="list-style-type: none"> The assumptions used for any reporting of metal equivalent values should be clearly stated. 	<ul style="list-style-type: none"> No weighting used.
Relations hip between mineralisation widths and intercept lengths	<ul style="list-style-type: none"> These relationships are particularly important in the reporting of Exploration Results. 	<ul style="list-style-type: none"> All samples reported are downhole width.
	<ul style="list-style-type: none"> If the geometry of the mineralisation with respect to the drill hole angle is known, its nature should be reported. 	<ul style="list-style-type: none"> Mineralization is generally perpendicular to drilling orientation.
	<ul style="list-style-type: none"> If it is not known and only the down hole lengths are reported, there should be a clear statement to this effect (e.g. 'down hole length, true width not known'). 	<ul style="list-style-type: none"> All intercepts are down hole lengths, true widths not yet determined.
Diagrams	<ul style="list-style-type: none"> Appropriate maps and sections (with scales) and tabulations of intercepts should be included for any significant discovery being reported These should include but not be limited to a plan view of drill hole collar locations and appropriate sectional views. 	<ul style="list-style-type: none"> Plans and sections are located in the body of the announcement.
Balanced reporting	<ul style="list-style-type: none"> Where comprehensive reporting of all Exploration Results is not practicable, representative reporting of both low and high grades and/or widths should be practiced to avoid misleading reporting of Exploration Results. 	<ul style="list-style-type: none"> All samples were reported for Au and their context discussed.

For personal use only

<p>Other substantive exploration data</p>	<ul style="list-style-type: none"> Other exploration data, if meaningful and material, should be reported including (but not limited to): geological observations; geophysical survey results; geochemical survey results; bulk samples – size and method of treatment; metallurgical test results; bulk density, groundwater, geotechnical and rock characteristics; potential deleterious or contaminating substances. 	<ul style="list-style-type: none"> All other relevant data has been included within this report.
<p>Further work</p>	<ul style="list-style-type: none"> The nature and scale of planned further work (e.g. tests for lateral extensions or depth extensions or large-scale step-out drilling). 	<p>COMET VALE Drilling is ongoing, refer to end of text for more comprehensive update.</p>
	<ul style="list-style-type: none"> Diagrams clearly highlighting the areas of possible extensions, including the main geological interpretations and future drilling areas, provided this information is not commercially sensitive. 	<ul style="list-style-type: none"> Maps plans and sections are all found in the body of the text.