

Preliminary Geophysics Highlights Emerging Conductors at Commonwealth Gold–Silver Project

Early airborne MobileMT results identify multiple conductive features and structural trends consistent with mineralised systems across the Commonwealth–Silica Hill corridor.

Highlights:

- Preliminary apparent-conductivity maps from the MobileMT™ airborne electromagnetic (EM) survey reveal strong and discrete conductive features coincident with key geological structures.
- Define a 4km prospective corridor, parallel to Nindethana Fault, extending along strike from the Commonwealth–Silica Hill deposits.
- Subtle but persistent anomalies north-east of Collings prospect and near Stringers Mine show conductivity adjacent to mapped structures and Devonian intrusives, warranting further analysis.
- Broad resistive centres correlate with silica-altered rhyolites that host the Commonwealth mineralisation and may highlight additional concealed rhyolitic domes at depth.
- The Nindethana Fault, a major controlling structure in the district is clearly imaged-validating survey quality and structural interpretation.
- 2D inversion and 3D model processing now underway to refine discrete conductors and prioritise drilling targets.
- Preliminary interpretation suggests potential extensions to known mineralisation at Commonwealth and Silica Hill, with additional targets emerging along strike.

Antony Beckmand, CEO, commented:

“These early geophysical images are already proving their value. We’re seeing clear conductivity patterns mapping the major structures, along with subtle but intriguing anomalies in new areas that deserve closer attention. Once the 2D inversions and 3D models are complete, we’ll have a powerful dataset to refine our drill targeting and advance the Commonwealth Gold–Silver Project toward its next phase of exploration.”

ASX: KNI

Gettex/FSX/XMUN/XSTU:

WKN: A3CTAL

ISIN: AU0000159840

Highlights

Advancing **Silver, Gold** and **Base Metals** projects in Australia and **Battery Metals** projects in Europe

Targeting **critical** and **strategic** minerals for energy transition and security

Ethical Sourcing ensured

Corporate Directory

Kuniko Limited
ACN 619 314 055

Chief Executive Officer
Antony Beckmand

Chairman
Gavin Rezos

Non-Executive Director
Brendan Borg

Non-Executive Director
Maja McGuire

Company Secretaries
Joel Ives, Tom O'Rourke



www.kuniko.eu



info@kuniko.eu



[@KunikoLtd](https://twitter.com/KunikoLtd)



[Kuniko Limited](https://www.linkedin.com/company/kuniko-limited)



[Kuniko-limited](https://www.facebook.com/Kuniko-limited)



Level 28, AMP Tower,
140 St Georges Terrace
Perth WA 6000



+61 8 6364 5095

**Preliminary
Geophysical
Interpretation**

Kuniko has received the preliminary apparent-conductivity datasets from the MobileMT™ airborne electromagnetic (EM) survey recently completed at its Commonwealth Gold-Silver Project, New South Wales.

The program was conducted by Expert Geophysics Surveys Inc. between late October and early November 2025, covering approximately 328 line-kilometres across the Commonwealth-Silica Hill corridor, aligned with the Nindethana Fault – a first-order structural suture zone that provides the regional framework for volcanogenic massive sulphide (VMS) and epithermal-style mineralisation in the district.

The objectives of the survey were to:

- detect discrete conductive or resistive features that may represent sulphide accumulations or alteration zones at depth;
- map major structural and lithological boundaries that control mineralisation across the corridor; and
- assist in refining priority drill targets at the Commonwealth, Silica Hill and adjacent prospects.

Figure 1 presents the 223 Hz apparent conductivity image, which provides a mid-depth window (~200–500 m) into the subsurface architecture of the Commonwealth-Silica Hill corridor. At this frequency, the data resolve major fault zones, alteration halos, and conductivity gradients within the rhyolitic volcanic sequence that hosts gold-silver mineralisation.

Key observations include:

- A prominent NW-SE-trending, ~4 km-long conductive corridor (yellow to red on the map) extends from Commonwealth Mine → Silica Hill → Coronation Mine → Collings Prospect, parallel to the Nindethana Fault. This corridor likely represents sulphidic or hydrothermally altered units along a major structural-stratigraphic boundary. The response strengthens in the 85 Hz data, implying a deep, persistent shear-related conductor—possibly the primary mineralising conduit.
- Resistive anomalies coincide with mapped rhyolitic volcanic units, the principal host rocks of the Commonwealth-Silica Hill deposits. These zones are interpreted as silicified, quartz-sericite-altered rhyolites, consistent with strong silica alteration halos observed in drilling and surface sampling.
- The data suggest additional concealed rhyolitic domes or flow units, particularly north of Silica Hill within the Silurian volcanics, that have not yet been mapped at surface.
- A major east-bounding conductor coincides with a mapped fault on the margin of the Bodulura Limestone fault. This feature may represent a large controlling structure that has influenced fluid flow into the Commonwealth corridor. Field verification is planned to confirm its source.
- Several moderate conductors occur adjacent to the mapped Devonian felsic intrusion in the south-east. This is significant, as previous studies have inferred Devonian magmatism as the primary driver of mineralisation, possibly linked to a deeper intermediate intrusion beneath Commonwealth.
- At the Collings Prospect, a northeast-trending conductive splay diverges from the main corridor. Subtle but discrete sub-circular conductors are interpreted as concealed sulphidic lenses within Silurian volcanoclastics. These anomalies persist across frequencies, suggesting continuity to depth and strong follow-up potential.
- Intense conductivity along the western margin of the survey delineates the Nindethana Fault Zone. While partly related to phyllitic shales and groundwater pathways, this structure may also host concealed sulphide mineralisation when intersected by cross-faults.

Next Steps:

Advanced processing is now underway, including 2D line inversions and 3D resistivity modelling, to delineate discrete conductors, refine structural architecture, and prioritise drill targets for Kuniko's upcoming Phase-1 drill program.

Kuniko notes that the preliminary airborne electromagnetic data are qualitative in nature and intended to support geological interpretation. Further processing and interpretation are required to assess the significance of identified conductive features.

Planned works includes:

- Completion of 2D inversion along Mobile MT lines and 3D resistivity modelling – expected December 2025.
- Ground truth new anomalies with geological mapping and rock chip sampling.
- Integration of historical geophysical data with new data to define first-priority drill targets.
- Finalisation of drill design and contractor selection for Phase-1 drilling, targeted for late 2025 or early 2026.
- Soil sampling is currently underway at the Geenobby and Gladstone West targets. Results expected mid-December.

Figure 1: Preliminary apparent-conductivity map (223Hz) Commonwealth-Silica Hill corridor highlighting the Nindethana Fault, emerging discrete conductors and resistive anomalies silica alteration.

[Coordinate System: MGA94 Zone 55]

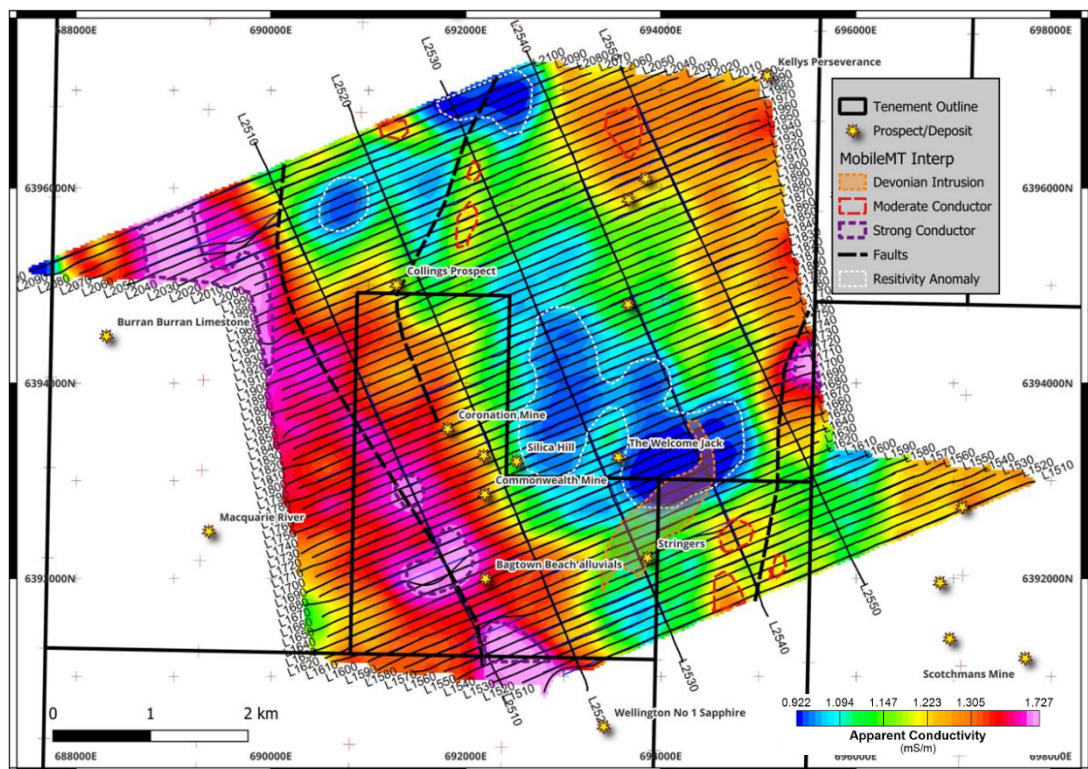
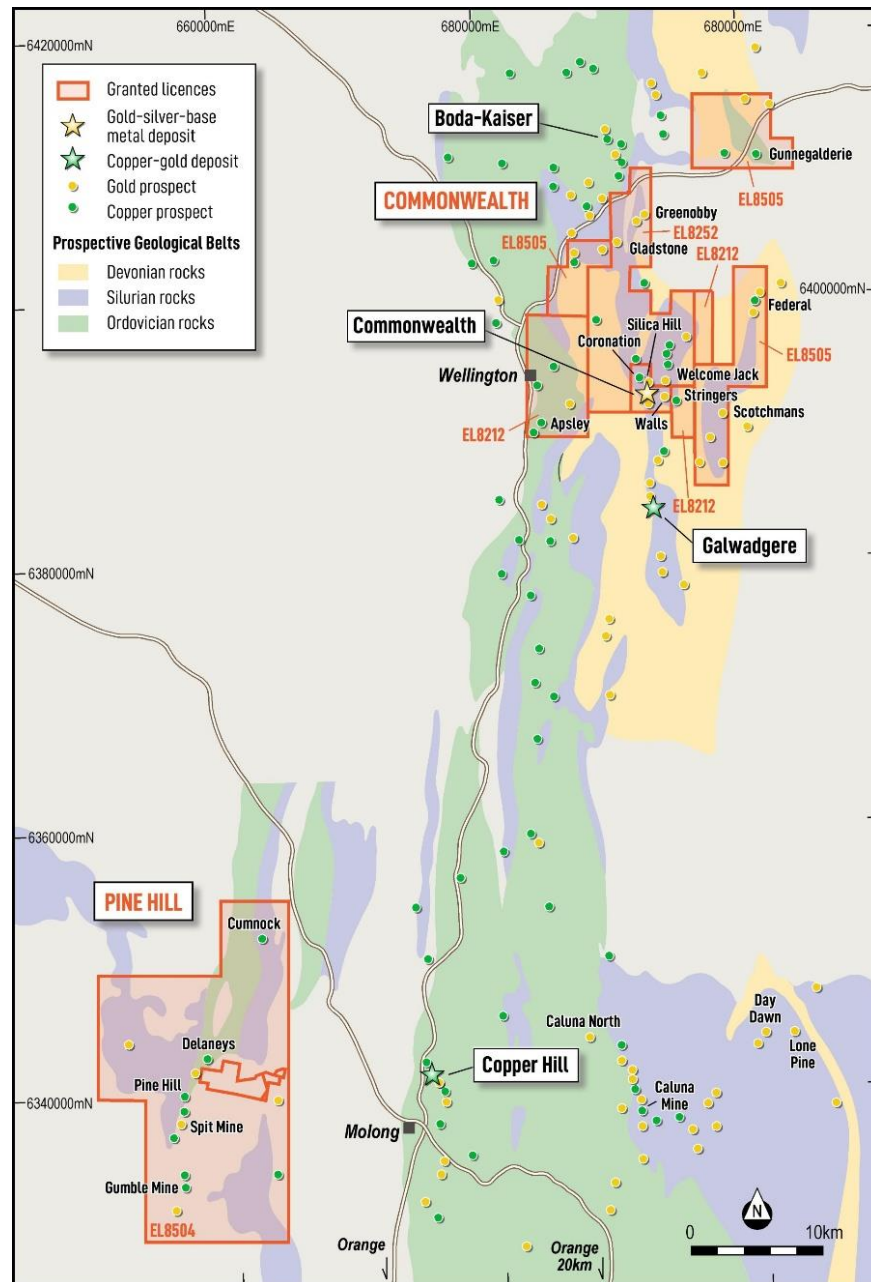


Figure 2: Location of Kuniko's exploration licences and key prospects within the Commonwealth Gold-Silver Project, central New South Wales.

The project covers four granted exploration licences (EL8212, EL8252, EL8504 and EL8505) encompassing multiple gold-silver-base-metal prospects, including Commonwealth, Silica Hill, Gladstone, Geenobby and Pine Hill, situated along the highly prospective Lachlan Fold Belt.

[Coordinate System: MGA94 Zone 55]



Commonwealth Gold-Silver Project Overview

The Commonwealth Project lies ~100 km north of Orange, NSW, within the prolific Lachlan Fold Belt – a Tier-1 region hosting major operations such as Cadia-Ridgeway, North Parkes and Cowal (Refer: Figure 2).

The Project comprises:

- **Commonwealth deposit:** a volcanogenic massive sulphide (VMS) style system containing gold, silver, zinc, lead and copper.
- **Silica Hill deposit:** an epithermal/VMS hybrid system with high-grade silver-gold shoots within broader zones.
- **Regional upside:** multiple untested targets including Silica Hill East, Geenobbys and Gladstone, where geophysical and geochemical anomalies remain untested by drilling.

Impact Minerals has previously noted that the Commonwealth mineral system shares geological characteristics with several globally recognised VMS-epithermal deposits, such as Eskay Creek in Canada,

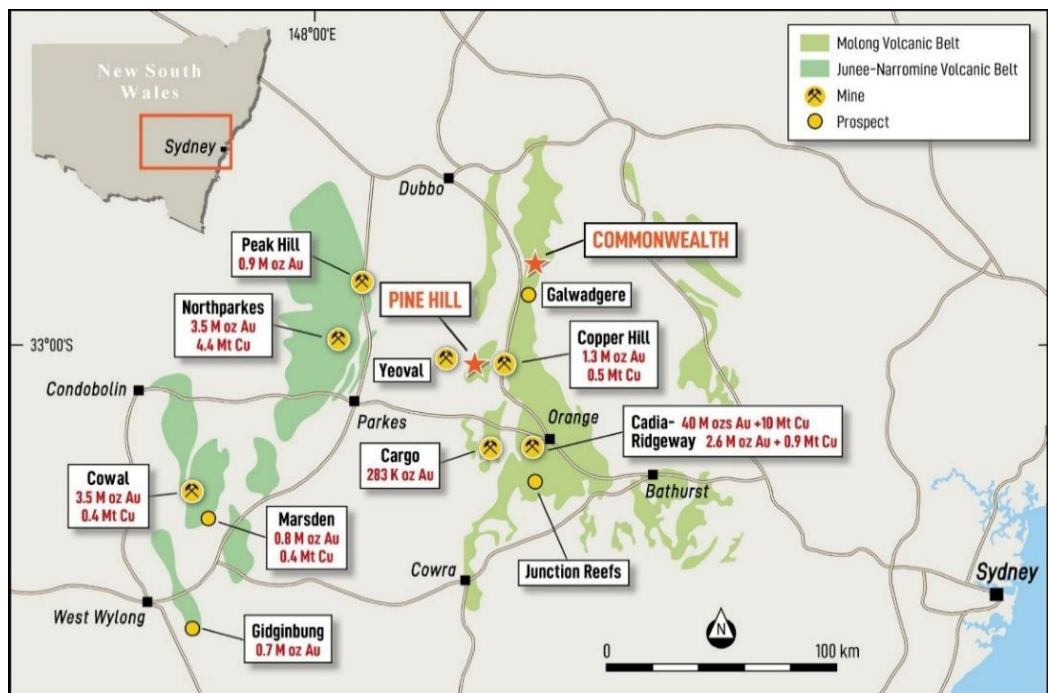
where precious metals are closely associated with volcanic-hosted sulphide mineralisation¹. These analogies provide valuable context for Kuniko’s exploration approach while the Company continues to develop its own geological model specific to the Lachlan Fold Belt setting.

Impact Minerals has previously reported JORC (2012) Inferred Mineral Resource Estimates at both Commonwealth and Silica Hill (Refer: Impact Minerals ASX releases dated 2 September 2016, 1 February 2018 and 22 August 2019). These estimates demonstrate the presence of significant gold and silver mineralisation within a broader system that remains open along strike and depth. Kuniko notes that it has not independently verified or adopted these estimates, and they should not be relied upon as Kuniko’s own. During Stage-1, Kuniko intends to undertake technical work and, if appropriate, validate and update the estimates through its own Competent Person.

With existing permits and landholder agreements in place, the Project is considered drill-ready, allowing rapid progression of exploration programs.

Figure 3: Location of the Commonwealth & Silica Hill Project and major gold-copper deposits within the Lachlan Fold Belt.

The Silica Hills prospect is approximately 200 m northeast of the northern extent of the Commonwealth prospect.



¹ ASX: IPT "New drill targets along the Welcome Jack trend, Commonwealth Project, New South Wales" released 13 Apr. 2018.

For personal use only



About Kuniko

Kuniko Limited (ASX: KNI) is a mineral exploration company advancing a diversified portfolio of strategic and critical mineral projects aligned with the global energy transition and economic security objectives. The Company's portfolio now includes gold, silver and base metals in Australia alongside copper, nickel, and cobalt projects in the Nordics, and it is committed to high ethical and environmental standards for all company activities. Key assets include:

- **Commonwealth Gold-Silver Project (NSW, Australia):** Binding earn-in and JV with Impact Minerals (ASX: IPT) to earn up to 70% of a VMS/epithermal gold-silver system in the Lachlan Fold Belt, hosting JORC(2012) Inferred Mineral Resource Estimates at Commonwealth and Silica Hill.
- **Ertelien Nickel-Copper-Cobalt Project** located in southern Norway, Ertelien hosts a JORC (2012) Mineral Resource Estimate reported by Kuniko of 40Mt @ 0.25% NiEq, including 22Mt of Indicated and 18Mt of Inferred resources (Refer: ASX release dated 12 December 2024) *.
- **Ringerike Battery Metals Project:** a license package hosting multiple Ni-Cu-Co-PGE targets across a 20km mineralised trend, anchored by the Ertelien deposit.
- **Skuterud Cobalt Project:** has had over 1 million tonnes of cobalt ore mined historically and was once the world's largest cobalt producer. Kuniko's drill programs have seen multiple cobalt intercepts, including high grade from shallow depths, at the priority "Middagshvile" target.
- **Vågå Copper Project:** A VMS-style copper project with large-scale geophysical anomalies and near-surface targets, including a prospective horizon with a known strike extent of ~9km. A further shallow conductor can also be traced for several kilometres.

Kuniko is committed to ethical sourcing and responsible development. Across all projects, Kuniko prioritises low-carbon operations, transparent stakeholder engagement, and alignment with the United Nations Sustainable Development Goals. Its Norwegian operations benefit from access to 98% renewable energy.

* Note: The individual average grades are 0.18% nickel, 0.12% copper, and 0.014% cobalt. Nickel equivalent (NiEq) was calculated using the formula: $NiEq(\%) = Ni\% + (Cu\% \times 0.4091) + (Co\% \times 1.8182)$, based on metal prices of US\$22,000/t Ni, US\$9,000/t Cu, and US\$40,000/t Co. Preliminary metallurgical test work conducted at SGS Canada indicates potential nickel recoveries of 70-75% and copper recoveries of up to 90%. The company believes, based on this work and comparison with similar deposits, that all metals used in the NiEq calculation have a reasonable potential to be recovered and sold.

Forward Looking Statements

Certain information in this document refers to the intentions of Kuniko, however these are not intended to be forecasts, forward looking statements, or statements about the future matters for the purposes of the Corporations Act or any other applicable law. Statements regarding plans with respect to Kuniko's projects are forward looking statements and can generally be identified using words such as 'project', 'foresee', 'plan', 'expect', 'aim', 'intend', 'anticipate', 'believe', 'estimate', 'may', 'should', 'will' or similar expressions. There can be no assurance that the Kuniko's plans for its projects will proceed as expected and there can be no assurance of future events which are subject to risk, uncertainties and other actions that may cause Kuniko's actual results, performance, or achievements to differ from those referred to in this document. While the information contained in this document has been prepared in good faith, there can be given no assurance or guarantee that the occurrence of these events referred to in the document will occur as contemplated. Accordingly, to the maximum extent permitted by law, Kuniko and any of its affiliates and their directors, officers, employees, agents and advisors disclaim any liability whether direct or indirect, express or limited, contractual, tortious, statutory or otherwise, in respect of, the accuracy, reliability or completeness of the information in this document, or likelihood of fulfilment of any forward-looking statement or any event or results expressed or implied in any forward-looking statement; and do not make any representation or warranty, express or implied, as to the accuracy, reliability or completeness of the information in this document, or likelihood of fulfilment of any forward-looking statement or any event or results expressed or implied in any forward-looking statement; and disclaim all responsibility and liability for these forward-looking statements (including, without limitation, liability for negligence).



ASX Release

12.11.2025

Competent Persons Statement

The information in this announcement that relates to exploration results for the Commonwealth and Silica Hill Projects is based on, and fairly represents, information compiled by James Cumming, a Member of the Australasian Institute of Geoscientists (AIG).

Mr Cumming is a consultant to Kuniko Limited through JC Exploration Pty Ltd and has sufficient experience relevant to the style of mineralisation and type of deposit under consideration and to the activities being undertaken to qualify as a Competent Person as defined in the 2012 Edition of the 'Australasian Code for Reporting of Exploration Results, Mineral Resources and Ore Reserves' (JORC Code).

Mr Cumming consents to the inclusion in this announcement of the matters based on his information in the form and context in which it appears.

No new information

Except where explicitly stated, this announcement contains references to prior exploration results, all of which have been cross-referenced to previous market announcements made by the Company. The Company confirms that it is not aware of any new information or data that materially affects the information included in the relevant market announcements.

The information in this report relating to the Mineral Resource estimate for the Ertelien Project is extracted from the Company's ASX announcements dated 12 December 2024. KNI confirms that it is not aware of any new information or data that materially affects the information included in the original announcement and that all material assumptions and technical parameters underpinning the Mineral Resource estimate continue to apply.

Enquiries

Antony Beckmand, CEO
Telephone: +47 920 47 519
Email: abe@kuniko.eu

Joel Ives, Company Secretary
Telephone: +61 8 6364 5095
Email: info@kuniko.eu

Authorisation

This announcement has been authorised by the Board of Directors of Kuniko Limited.



ANNEXURE – JORC Code, 2012 Edition – Table 1

Note: The following JORC (2012) Table 1 information relates to exploration results for the Commonwealth and Silica Hill Projects. The data originate from historical work completed by Impact Minerals Ltd and have been reviewed by Kuniko's Competent Person. Kuniko is not reporting or adopting any Mineral Resource Estimate, and Section 3 of the JORC (2012) Table 1 is therefore not included.

Section 1 Sampling Techniques and Data

(Criteria in this section apply to all succeeding sections)

| Criteria | JORC Code explanation | Commentary |
|------------------------------|---|--|
| Sampling techniques | <ul style="list-style-type: none"> Nature and quality of sampling (e.g. cut channels, random chips, or specific specialised industry standard measurement tools appropriate to the minerals under investigation, such as down hole gamma sondes, or handheld XRF instruments, etc). These examples should not be taken as limiting the broad meaning of sampling. Include reference to measures taken to ensure sample representivity and the appropriate calibration of any measurement tools or systems used. Aspects of the determination of mineralisation that are Material to the Public Report. In cases where 'industry standard' work has been done this would be relatively simple (e.g. 'reverse circulation drilling was used to obtain 1 m samples from which 3 kg was pulverised to produce a 30 g charge for fire assay'). In other cases more explanation may be required, such as where there is coarse gold that has inherent sampling problems. Unusual commodities or mineralisation types (e.g. submarine nodules) may warrant disclosure of detailed information. | <ul style="list-style-type: none"> No drilling and sampling reported in this release Regarding Airborne Geophysical Survey: Data was acquired using EG Pty Ltd's MobileMT System, an airborne passive-source electromagnetic method measuring natural EM fields (25–20,000 Hz) and mapping subsurface resistivity to ~1 km depth. Magnetics were collected simultaneously with a high-sensitivity cesium magnetometer. |
| Drilling techniques | <ul style="list-style-type: none"> Drill type (e.g. core, reverse circulation, open-hole hammer, rotary air blast, auger, Bangka, sonic, etc) and details (e.g. core diameter, triple or standard tube, depth of diamond tails, face-sampling bit, or other type, whether core is oriented and if so, by what method, etc). | <ul style="list-style-type: none"> Not applicable; No new drilling |
| Drill sample recovery | <ul style="list-style-type: none"> Method of recording and assessing core and chip sample recoveries and results assessed. Measures taken to maximise sample recovery and ensure representative nature of the samples. Whether a relationship exists between sample recovery and grade and whether sample bias may have occurred due to preferential loss/gain of fine/coarse material. | <ul style="list-style-type: none"> Not applicable; No new samples |



| Criteria | JORC Code explanation | Commentary |
|---|---|--|
| Logging | <ul style="list-style-type: none"> Whether core and chip samples have been geologically and geotechnically logged to a level of detail to support appropriate Mineral Resource estimation, mining studies and metallurgical studies. Whether logging is qualitative or quantitative in nature. Core (or costean, channel, etc) photography. The total length and percentage of the relevant intersections logged. | <ul style="list-style-type: none"> Not applicable; No new drilling or sampling |
| Sub-sampling techniques and sample preparation | <ul style="list-style-type: none"> If core, whether cut or sawn and whether quarter, half or all core taken. If non-core, whether riffled, tube sampled, rotary split, etc and whether sampled wet or dry. For all sample types, the nature, quality, and appropriateness of the sample preparation technique. Quality control procedures adopted for all sub-sampling stages to maximise representivity of samples. Measures taken to ensure that the sampling is representative of the in-situ material collected, including for instance results for field duplicate/second-half sampling. Whether sample sizes are appropriate to the grain size of the material being sampled. | <ul style="list-style-type: none"> Not applicable; No new samples |
| Quality of assay data and laboratory tests | <ul style="list-style-type: none"> The nature, quality and appropriateness of the assaying and laboratory procedures used and whether the technique is considered partial or total. For geophysical tools, spectrometers, handheld XRF instruments, etc, the parameters used in determining the analysis including instrument make and model, reading times, calibrations factors applied and their derivation, etc. Nature of quality control procedures adopted (e.g. standards, blanks, duplicates, external laboratory checks) and whether acceptable levels of accuracy (i.e. lack of bias) and precision have been established. | <ul style="list-style-type: none"> No drilling and sampling reported in this release Regarding Airborne Geophysical Survey data quality control: <ul style="list-style-type: none"> Daily QC conducted by EG Pty Ltd's field technologist using field workstations. Data uploaded daily to EG Pty Ltd's processing facility in Toronto, Canada, via secure FTP. QC results verified in Toronto and feedback relayed to field crews. Preliminary data supplied to the Client's representative within 24 hours of acquisition. Re-flights triggered if magnetic diurnal exceeded 25 nT/2 min, or if line deviation >20% of nominal spacing over >2 km. |
| Verification of sampling and assaying | <ul style="list-style-type: none"> The verification of significant intersections by either independent or alternative company personnel. The use of twinned holes. Documentation of primary data, data entry procedures, data verification, data storage (physical and electronic) protocols. Discuss any adjustment to assay data. | <ul style="list-style-type: none"> No drilling and sampling reported in this release Regarding Airborne Geophysical Survey: Data verification involved daily cross-checks of airborne vs. base-station signals, power checks, and GPS time-synchronisation (<1s) |
| Location of data points | <ul style="list-style-type: none"> Accuracy and quality of surveys used to locate drill holes (collar and down-hole surveys), trenches, mine workings and other locations used in Mineral Resource | <ul style="list-style-type: none"> Regarding the Airborne Geophysical Survey: the contractor EG PTY LTD uses a proprietary GPS navigation system utilizing the GPS Receiver with Linx RXM-GNSS-TM |



| Criteria | JORC Code explanation | Commentary |
|--|--|--|
| | <p>estimation.</p> <ul style="list-style-type: none"> • Specification of the grid system used. • Quality and adequacy of topographic control. | <p>GPS Engines. The key features of the GPS Receiver are: L11575.42MHz, C/A code, 33-channel satellite tracking, Position accuracy: 2.5m, 10 Hz update rate, with constellation system support and DGPS support. An EG PTY LTD Computer/Pilot Steering Indicator is used to compute the flight path grids in real-time onboard the helicopter.</p> <ul style="list-style-type: none"> • Grid system used: WGS84 UTM Z 55S • Government topographic maps used |
| Data spacing and distribution | <ul style="list-style-type: none"> • Data spacing for reporting of Exploration Results. • Whether the data spacing and distribution is sufficient to establish the degree of geological and grade continuity appropriate for the Mineral Resource and Ore Reserve estimation procedure(s) and classifications applied. • Whether sample compositing has been applied. | <ul style="list-style-type: none"> • Regarding the Airborne Geophysical Survey: flight line spacing is 100 m in a ENE-WSW orientation; tie line spacing is 1000 m in a ESE to WNW orientation; covering 19 km sq. area with 328 line kms; EM data: 73,728 Hz raw, processed/delivered at 2 Hz (~11 m intervals); Magnetic & GPS data: 10 Hz (~2.2 m intervals). • The airborne geophysical survey configuration and reading spacing are considered appropriate for the style of mineralisation and orientation of regional geologic features; suitable for mapping conductive features and geological structures to ~1 km depth. |
| Orientation of data in relation to geological structure | <ul style="list-style-type: none"> • Whether the orientation of sampling achieves unbiased sampling of possible structures and the extent to which this is known, considering the deposit type. • If the relationship between the drilling orientation and the orientation of key mineralised structures is considered to have introduced a sampling bias, this should be assessed and reported if material. | <ul style="list-style-type: none"> • The airborne geophysical survey configuration and reading spacing is generally designed to maximise the coupling with the target zone, i.e. oblique or perpendicular to prevailing stratigraphy, structures, and target geometries |
| Sample security | <ul style="list-style-type: none"> • The measures taken to ensure sample security. | <ul style="list-style-type: none"> • Chain of Custody of data is controlled by the survey contractor (EG PTY LTD) • Daily quality control of newly acquired data was undertaken in the field by EG PTY LTD's on-site crew. Data was transmitted on a daily basis via internet to EG PTY LTD's processing facility in Toronto. Quality control information was then confirmed by EG PTY LTD and relayed back to the field crew on a regular basis. • Digital data were backed up daily in the field and securely transmitted to EG Pty Ltd's Toronto facility. Time-synchronised with GPS for integrity. |
| Audits or reviews | <ul style="list-style-type: none"> • The results of any audits or reviews of sampling techniques and data. | <ul style="list-style-type: none"> • All data and QC reviewed daily by EG Pty Ltd's senior geophysicists. • Internal QA/QC checks performed before final data release. • 'Company' geologists and Competent Person, James Cummings, have reviewed the preliminary results of the airborne geophysical survey. • Peer review of the final product is to be expected. |



Section 2 Reporting of Exploration Results

(Criteria listed in the preceding section also apply to this section)

| Criteria | JORC Code explanation | Commentary |
|--|--|--|
| Mineral tenement and land tenure status | <ul style="list-style-type: none"> Type, reference name/number, location and ownership including agreements or material issues with third parties such as joint ventures, partnerships, overriding royalties, native title interests, historical sites, wilderness or national park and environmental settings. The security of the tenure held at the time of reporting along with any known impediments to obtaining a licence to operate in the area. | <ul style="list-style-type: none"> Commonwealth Project: Five Exploration Licences covering ~315 km². 100% held by Endeavour Minerals Pty Ltd, a subsidiary of Impact Minerals Ltd. License numbers: EL8212, EL8252, EL8504, EL8504 and EL8505. The Commonwealth Project is subject to a binding earn-in and joint-venture agreement between Kuniko Limited and Impact Minerals Limited (ASX: IPT). Under the agreement, Kuniko may earn up to a 70% interest in the Project by meeting staged exploration expenditure commitments and cash/share payments to Impact Minerals. During the earn-in period, Impact Minerals (through its subsidiary Endeavour Minerals Pty Ltd) remains the registered tenement holder and operator of record for statutory purposes, while Kuniko funds and manages the current exploration programs in coordination with Impact Minerals. All tenure remains in good standing and there are no known impediments to continued exploration. No Aboriginal or heritage sites recorded; tenure in good standing; no known impediments. |
| Exploration done by other parties | <ul style="list-style-type: none"> Acknowledgment and appraisal of exploration by other parties. | <ul style="list-style-type: none"> 66 holes completed historically along 300 m strike between Commonwealth Main Shaft and Commonwealth South (average depth 53 m). Further to that, Impact Minerals have completed 87 holes of RC and Diamond drilling across the project Numerous geophysical survey have been conducted in the area which include gravity, IP, MLEM, FLEM and SAM. The deposit area has been well soil sampled over the 2.5km strike |
| Geology | <ul style="list-style-type: none"> Deposit type, geological setting and style of mineralisation. | <ul style="list-style-type: none"> Gold-rich VMS deposits at and below contact of porphyritic rhyolite and overlying volcano-sedimentary rocks, possibly overprinted by epithermal mineralisation. |
| Drillhole Information | <ul style="list-style-type: none"> A summary of all information material to the understanding of the exploration results including a tabulation of the following information for all Material drill holes: <ul style="list-style-type: none"> easting and northing of the drill hole collar elevation or RL (Reduced Level – elevation above sea level in metres) of the | <ul style="list-style-type: none"> Not applicable; No new drilling results reported in this release |



| Criteria | JORC Code explanation | Commentary |
|---|---|---|
| | <p>drill hole collar</p> <ul style="list-style-type: none"> o dip and azimuth of the hole o down hole length and interception depth o hole length. <ul style="list-style-type: none"> • If the exclusion of this information is justified on the basis that the information is not Material and this exclusion does not detract from the understanding of the report, the Competent Person should clearly explain why this is the case. | |
| Data aggregation methods | <ul style="list-style-type: none"> • In reporting Exploration Results, weighting averaging techniques, maximum and/or minimum grade truncations (eg cutting of high grades) and cut-off grades are usually Material and should be stated. • Where aggregate intercepts incorporate short lengths of high-grade results and longer lengths of low grade results, the procedure used for such aggregation should be stated and some typical examples of such aggregations should be shown in detail. • The assumptions used for any reporting of metal equivalent values should be clearly stated. | <ul style="list-style-type: none"> • Not applicable |
| Relationship between mineralisation widths and intercept lengths | <ul style="list-style-type: none"> • These relationships are particularly important in the reporting of Exploration Results. • If the geometry of the mineralisation with respect to the drill hole angle is known, its nature should be reported. • If it is not known and only the down hole lengths are reported, there should be a clear statement to this effect (eg 'down hole length, true width not known'). | <ul style="list-style-type: none"> • Not applicable; No new drilling data |
| Diagrams | <ul style="list-style-type: none"> • Appropriate maps and sections and tabulations of intercepts should be included for any significant discovery being reported. These should include, but not be limited to a plan view of drill hole collar locations and appropriate sectional views. | <ul style="list-style-type: none"> • A (233Hz) apparent conductivity plan view map with flight path is included in the report, highlighting new anomalies and key geological features and prospects are annotated on the maps. • An overview map of the Commonwealth & Silica Hill project and license areas are included for locational reference. |
| Balanced reporting | <ul style="list-style-type: none"> • Where comprehensive reporting of all Exploration Results is not practicable, representative reporting of both low and high grades and/or widths should be practiced to avoid misleading reporting of Exploration Results. | <ul style="list-style-type: none"> • Only preliminary results are discussed in this release. • A comprehensive report will follow when the final product is received. |
| Other substantive exploration data | <ul style="list-style-type: none"> • Other exploration data, if meaningful and material, should be reported including (but not limited to): geological observations; geophysical survey results; geochemical survey results; bulk samples – size and method of treatment; metallurgical test results; bulk density, groundwater, geotechnical and rock characteristics; potential deleterious or contaminating substances. | <ul style="list-style-type: none"> • Assessment of additional data ongoing; not material at time of reporting. |
| Further work | <ul style="list-style-type: none"> • The nature and scale of planned further work (eg tests for lateral extensions or | <ul style="list-style-type: none"> • Further work includes 2D inversion along Mobile MT lines and 3D resistivity |



| Criteria | JORC Code explanation | Commentary |
|----------|--|---|
| | <p><i>depth extensions or large-scale step-out drilling).</i></p> <ul style="list-style-type: none"><i>Diagrams clearly highlighting the areas of possible extensions, including the main geological interpretations and future drilling areas, provided this information is not commercially sensitive.</i> | <p>modelling of EM data, integration with geology/geochemistry, and prioritisation of conductors for potential ground follow-up and drilling.</p> |

personal use only