

17 November 2025

Early Works Completed and Drill Mobilisation Underway at Pilot Project (Au)

Highlights

- All permits and licences secured for the maiden drilling program at the Pilot Project.
- Road access and drill pad earthworks completed, and specialist diamond drilling contractor **Eagle Drilling NQ Pty Ltd** appointed with drill rig and support equipment mobilising to site.
- **4,800m diamond drilling program to test up to 700m downhole length** and target the extensive Pilot Project gold stockwork system, which outcrops at surface with grades ranging from **0.1 g/t Au to 56.6 g/t Au** based on Company sampling.
- Nine electromagnetic anomalies identified within the Pilot Project area, interpreted to extend greater than **1km in depth**.
- Maiden drilling program follows the successful ASX listing on 29 October 2025 and oversubscribed IPO, which raised **A\$10 million (before costs)**, exceeding the initial **A\$8 million target** due to strong investor demand.

Right Resources Limited (ASX:RRE) (Right Resources or the Company) is pleased to announce the completion of all early works required to commence Phase 1 drilling at the high gold grade Pilot Project. Preparatory works included earthworks for drill rig access to primary drill sites, undertaken by a Tumarumba-based contractor.

Right Resources Managing Director, Graham Howard commented: *“Right Resources is pleased to maintain strong momentum following our successful ASX listing. With all preparatory works complete, we are on track to commence diamond drilling at the Pilot Project in November. We are delighted to partner with Eagle Drilling NQ Pty Ltd for this significant programme and look forward to updating the market on our findings.”*

Pilot Project Maiden Drilling Program

The Company has appointed Eagle Drilling NQ Pty Ltd (**Eagle Drilling**) to execute the 4,800m maiden diamond drilling program at the Pilot Project in Tumarumba, New South Wales (Figure 1). Eagle Drilling will utilise a Sandvick DE712 track-mounted rig, capable of drilling holes exceeding 700m in downhole length. Eagle Drilling brings extensive experience in directional-controlled diamond drilling, and with mobilisation currently underway, drilling is scheduled to commence in late November 2025.

Surface geological mapping confirms multiple sub-vertical, high-grade gold zones associated with sheared porphyritic rhyolite. Detailed mapping and interpretation of light detection and ranging (**LiDAR**) survey data has identified numerous historic shafts and horizontal adits. NSW Mines Department records indicate historical production grades averaging 38.4 g/t Au. Company mapping and sampling in 2024 confirmed gold hosted in stockwork veining, sulphides, and within sheared and altered porphyritic rhyolite, with surface grades ranging from 0.1 g/t Au to 56.6 g/t Au. LiDAR interpretation also identified 1,700 potential historical workings around the Pilot Project area (Figure 2).

The Phase 1 drilling program at the Pilot Project is designed to:

- Test beneath historic Pilot Mine workings to evaluate extensions of known mineralisation;
- Target sub-vertical high-grade zones and broader gold stockwork systems; and
- Assess selected electromagnetic anomalies identified by Magneto-Telluric (MT) surveys, interpreted to extend beyond **1km depth**.

Detailed mapping and ground magnetic geophysical surveys are underway to further define mineralised trends and identify additional historic workings within the Pilot Project area. These insights will guide upcoming follow-up drilling programs.

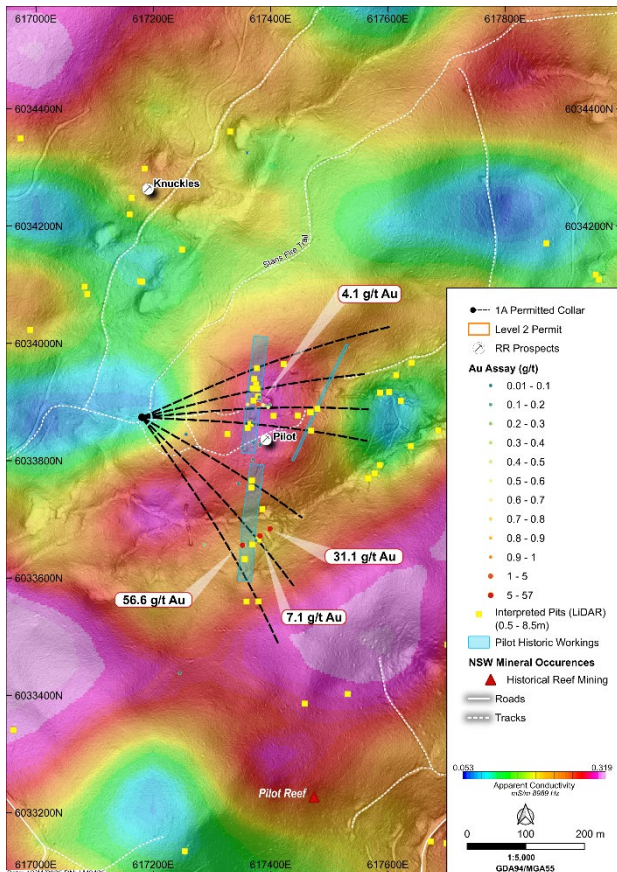


Figure 1: Map of Phase 1 drilling program at the Pilot Project in proximity to historic workings, Company assays and geophysical data.

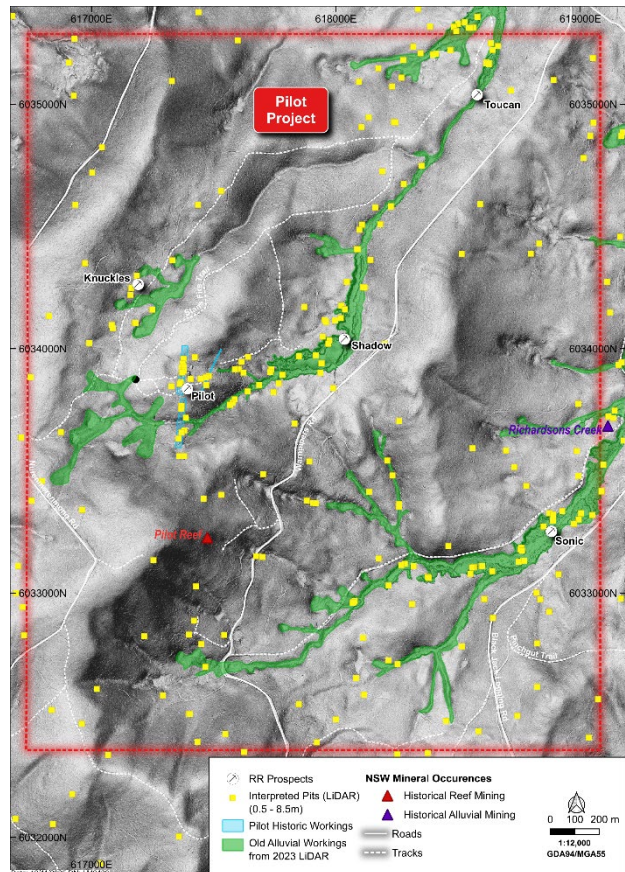


Figure 2: Map of Pilot Project showing historical workings, interpreted from LiDAR.

ENDS

This announcement has been approved for release by the Board of Right Resources Limited.

Further Information

Graham Howard

Managing Director

E: info@rightresources.com.au

Jessamyn Lyons

Company Secretary

E: jessamyn.lyons@rightresources.com.au

Media

Stephanie Richardson

Sodali & Co

E: stephanie.richardson@sodali.com

About Right Resources

Right Resources Limited is a New South Wales-based mineral exploration company focused on advancing a portfolio of gold and copper assets across 2,089 km² of tenements in the Tumbarumba and New England regions, both located within historically significant goldfields.

The Company's portfolio boasts eight 100% owned exploration licences in New South Wales (NSW), which are considered by the Company as highly prospective for copper and gold. The primary focus of exploration will be on the six licenses held in the Tumbarumba Region, which lies within the Lachlan Fold Belt and adjacent to a prolific mineral province near the Gilmore Fault Zone (GFZ), with over 90km of tenement strike length along this key structural feature associated with gold mineralisation. The host geology in the project areas includes near-surface high grade gold epithermal, porphyry, and stockwork systems.

The Company's flagship asset is the Pilot Project, a prospective high-grade gold target in the Tumbarumba Region. The area includes significant historic hard rock and alluvial workings that are largely undocumented in the NSW mineral occurrence database and is completely untested by modern drilling.

Follow Us



Forward Looking Statements

This document contains certain forward-looking statements concerning Right Resources Limited. Forward-looking statements are not statements of historical fact and actual events and results may differ materially from those described in the forward-looking statements as a result of a variety of risks, uncertainties and other factors. Forward-looking statements are inherently subject to business, economic, competitive, political and social uncertainties and contingencies. Many factors could cause the Company's actual results to differ materially from those expressed or implied in any forward-looking information provided by the Company, or on behalf of, the Company. Such factors include, among other things, risks relating to additional funding requirements, metal prices, exploration, development and operating risks, competition, production risks, regulatory restrictions, including environmental regulation and liability and potential title disputes.

Forward-looking statements in this document are based on the Company's beliefs, opinions and estimates of the Company as of the dates the forward-looking statements are made, and no obligation is assumed to update forward-looking statements if these beliefs, opinions and estimates should change or to reflect other future developments. These forward-looking statements should be read in conjunction with, and are qualified by reference to the Company's Prospectus dated 19 September 2025 and released on the ASX on 27 October 2025, including in particular sections 3 and 4 of the Prospectus. The Company cannot and does not give any assurance that the results, performance or achievements expressed or implied by the forward-looking statements contained in this document or the Prospectus will actually occur and investors are cautioned not to place undue reliance on these forward-looking statements.

Exploration Results

The information in this document that relates to Exploration Results for the Pilot Project has been extracted from the Company's Prospectus dated 19 September 2025, as released to ASX on 27 October 2025. The Prospectus is available to view at <https://www.asx.com.au/> and at <https://www.rightresources.com.au/>. The Company confirms that it is not aware of any new information or data that materially affects the information included in the original announcement. The Company confirms that the form and context in which the Competent Persons findings are presented have not been materially modified from the original announcement.

For personal use only