

ASX Release

20th November 2025

TRIUMPH DRILLING CONTINUES TO WIDEN NEW CONSTITUTION CORRIDOR

Dart Mining NL (“Dart” or the “Company”) is pleased to announce a drilling update on the Triumph Gold Project in Central Queensland. Dart completed the last of the ‘deep drilling’ drill holes prior to mobilising to the Coonambula antimony-gold project. This update includes assay results for TRDD014 and continues to highlight that the New Constitution orebody is wider than previously thought and should improve any future economic assessments. Triumph has an existing Inferred Mineral Resource of **2.16 Mt @ 2.17g/t Au for 150,000oz gold** ([ASX: DTM 4 Mar 2025](#)). Dart recently announced a high-integrity Exploration Target for the Triumph Project of 5.1 - 7.6 Mt @ 1.72 - 2.52 g/t Au for 285,100-613,200oz gold, with a **base case of 6.9Mt @ 2.29 g/t Au for 506,800oz gold** ([ASX: DTM 11 Nov 2025](#)).

HIGHLIGHTS

- Dart has completed a total **2,761m** (17 holes) of diamond core drilling across New Constitution, South Constitution, and Big Hans;
- Assays have been received for the last of the trial deep drill holes, TRDD014 (through New Constitution), with results for all outstanding Triumph drilling now completed;
- Highlight significant assays include:
 - TRDD014: **2.1m @ 3.02 g/t Au + 52.03g/t Ag** from 33.5m;
 - Including **0.5m @ 8.54 g/t Au + 41.50 g/t Ag** from 34.5m;
 - TRDD014: **1.4m @ 9.31 g/t Au + 39.70 g/t Ag** from 56.0m
 - Including **0.5m @ 28.20 g/t Au + 121.00 g/t Ag** from 56.4m;
 - TRDD014: **2.4m @ 2.28 g/t Au + 8.33 g/t Ag** from 116.1m;
 - Including **0.3m @ 7.64 g/t Au** and **44.40 g/t Ag** from 118.2m; and
 - TRDD014: **2.6m @ 4.34 g/t Au + 13.46 g/t Ag** from 233.0m
 - Including **0.5m @ 24.60 g/t Au + 74.00 g/t Ag** from 233.7m.
 -

With the completion of the trial deep drilling, Dart is pleased with the discovery of the parallel lodes. The deeper drilling proved that mineralisation extends at depth around New Constitution. Further, TRDD014 also provided insight into broad mineralised zones with the continuous drilling over longer distances which has not been completed across the key prospects before. **Results show a 110m widening of the gold system to the east of previously known mineralised zones.**

Darts Chairman, James Chirnside, commented: “The parallel lodes discovered during this phase of deep drilling, as well as the open nature of mineralisation at depth is very pleasing. The extension of broad mineralisation zones is also very encouraging. These new mineralised zones remain open to the east, and at depth, which gives us an abundance of new target areas for drill testing going forward. This phase of deep drilling around the New Constitution prospect has confirmed, along with the other deep holes, that higher grades of mineralisation exist deeper in the system. These results are typical of Triumph mineralisation, with discrete high-grade gold and silver intercepts that demonstrate a substantial increase in the width of the mineralised system being intersected.”

A summary of the drill hole significant assay results for TRDD014 is shown in Table 1. Significant intercepts that are interpreted to be new lodes are also highlighted in Table 1. These new lodes present additional targets for Dart to consider in future exploration to expand the Mineral Resource Estimate around the existing known mineralisation. These adjacent parallel new lodes present further open cut targets and any increase in the number of stacked lodes could have an improved economic impact on strip ratio in a mining study scenario. Specifically, with TRDD014, the mineralisation intercepted to the east at depth represents **~110m widening of the New Constitution system to the east.**

Table 1: Summary of significant intercepts of drilling results for TRDD014 plus notable new lode intercepts.

| Drill Hole Name | From Depth (m) | Thickness (m) | Au g/t | Ag g/t | Notes |
|-----------------|----------------|---------------|--------------|---------------|-----------------|
| TRDD014 | 33.5 | 2.1 | 3.02 | 52.03 | |
| including | 34.5 | 0.5 | 8.54 | 41.50 | |
| TRDD014 | 56.0 | 1.4 | 9.31 | 39.70 | |
| including | 56.4 | 0.5 | 28.20 | 121.00 | |
| TRDD014 | 81.5 | 1.1 | 0.92 | 4.23 | |
| TRDD014 | 85.5 | 2.5 | 0.4 | 3.61 | |
| including | 87.5 | 0.5 | 1.01 | 6.75 | |
| TRDD014 | 90.8 | 1.2 | 0.61 | 3.64 | New Lode |
| TRDD014 | 116.1 | 2.4 | 2.28 | 8.33 | New Lode |
| including | 118.2 | 0.3 | 7.64 | 44.40 | |
| TRDD014 | 154.4 | 0.4 | 1.31 | 7.61 | New Lode |
| TRDD014 | 166.3 | 0.6 | 2.14 | 3.87 | New Lode |
| TRDD014 | 171.7 | 1.0 | 2.01 | 6.71 | New Lode |
| TRDD014 | 182.9 | 0.6 | 1.35 | 7.98 | New Lode |
| TRDD014 | 189.6 | 0.3 | 2.38 | 10.10 | New Lode |
| TRDD014 | 233.0 | 2.6 | 4.34 | 13.46 | New Lode |
| including | 233.7 | 0.5 | 24.60 | 74.00 | |
| TRDD014 | 292.0 | 1.4 | 1.09 | 7.54 | New Lode |
| including | 292.0 | 0.5 | 2.36 | 15.15 | |

The Dart drilling to date for the New Constitution prospect is shown in Figure 1. A cross section of the TRDD014 assay results is shown in Figure 2.

For personal use only

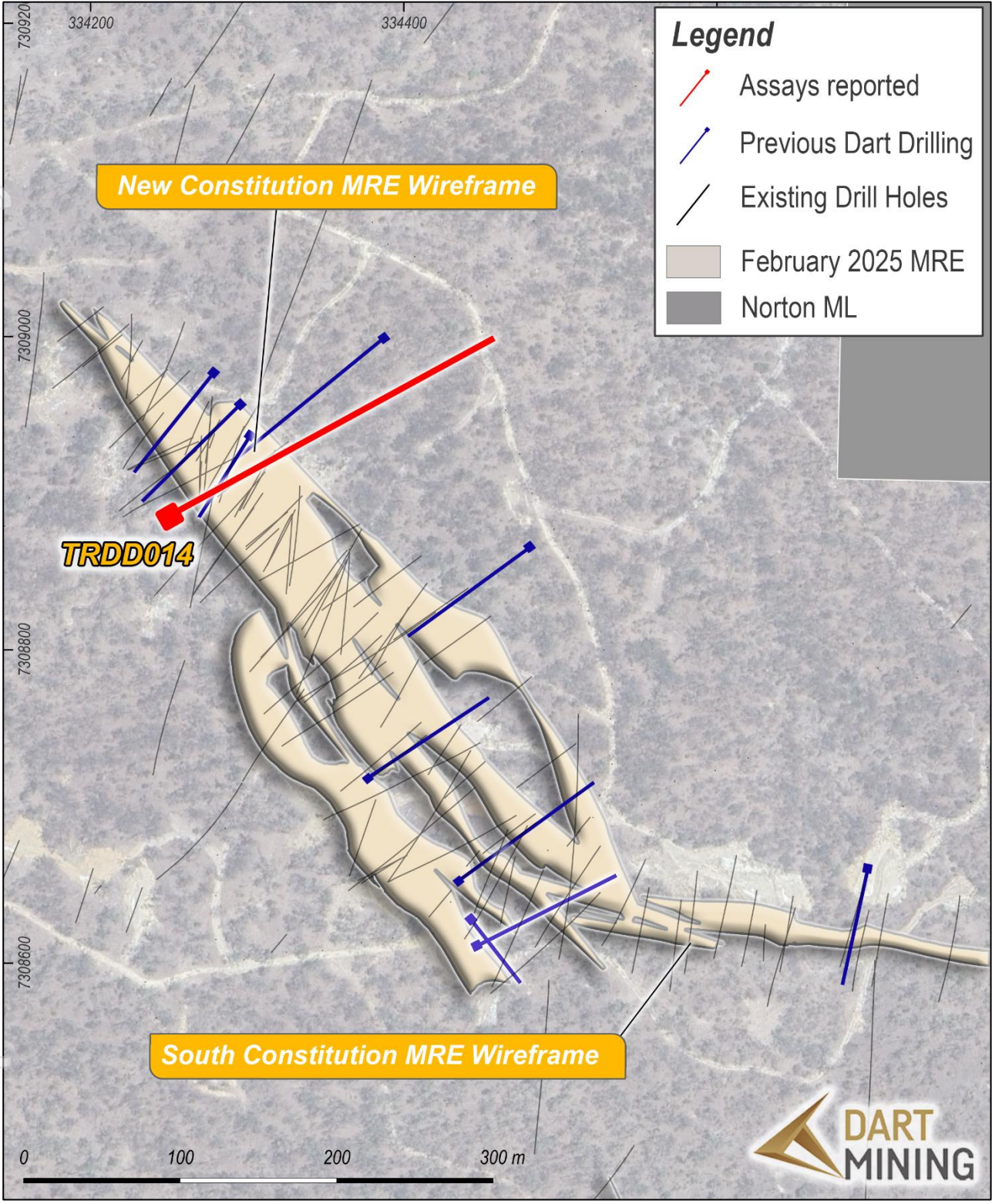


Figure 1: Location of reported drill hole assays compared to the existing Mineral Resource Estimate.

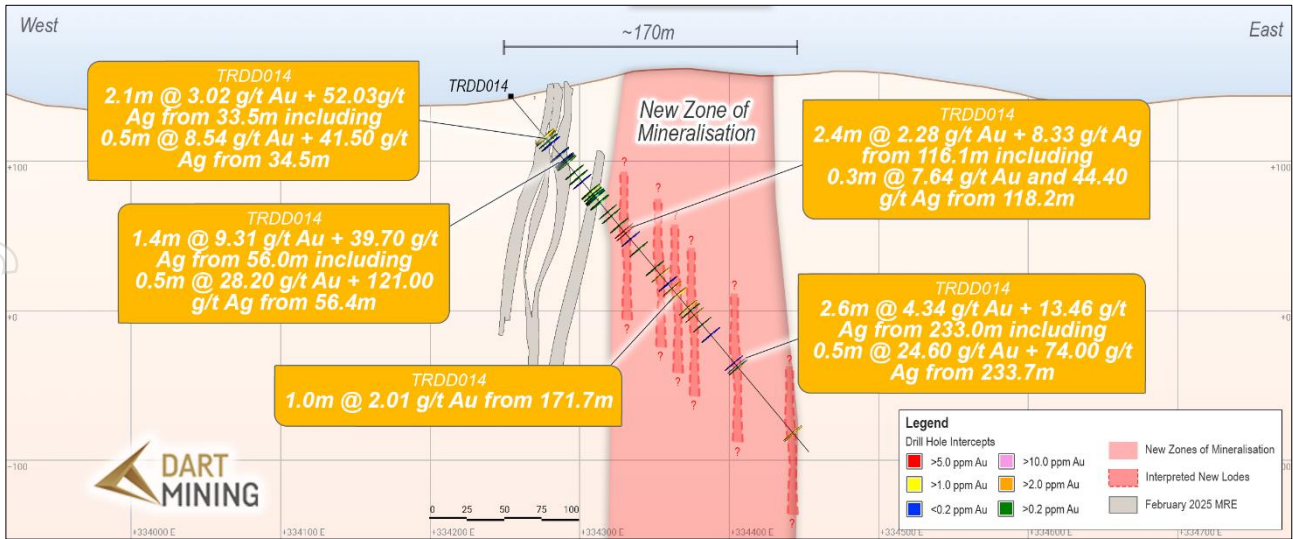


Figure 2: Cross section highlighting assay results > 0.1 g/t Au and new lode interpretations compared to the existing Mineral Resource Estimate.

Gold mineralisation is hosted within quartz-sulphide veins and is associated with pyrite and arsenopyrite, with gold and silver likely contained within the pyrite, with the pyrrhotite likely an associated but not host sulphide. The veins typically show a sericite (+/-chlorite) alteration halo, however this appears to be more associated with the quartz veining itself rather than sulphides.

Observations of the gold-silver-copper-lead-zinc-arsenic mineralisation within sulphidic zones is hosted in composite intrusions classified as Tonalite. These intrusives exhibit at least two phases of alteration, which may represent at least two different distinct phases or a spatial association and fractionation between the phases. Alteration within and peripheral to mineralised sulphidic veins occurs as spatially and temporally associated strong to intense phyllic (sericite/muscovite ± pyrite-silica) alteration with predominantly narrow vein selvages. Pockets of weak to strong potassic (biotite-K feldspar) alteration associated with weak copper mineralisation are observed.

EXPANSION FOCUS – NORTH AND SOUTH CORRIDOR

Existing drill intercept highlights are shown on Figure 3 for the Southern Mineralised Corridor including the Super Hans, Big Hans, New Constitution and South Constitution resource blocks. Existing drill intercept highlights are shown on Figure 4 for the Northern Mineralised Corridor including the Bald Hill resource block and historic Advance mine area. Both areas highlight strong geophysical extensions which are shown in the background of Figure 3 and Figure 4 by the chargeability ([ASX: MBK Nov 2016](#), [MBK Jan 2017](#)) as well as historical and current drilling intercepting high grade material. These areas will be a focus for Mineral Resource growth as Dart works through the numerous targets at Triumph with historical and current drilling intercepting high grade material.

For personal use only

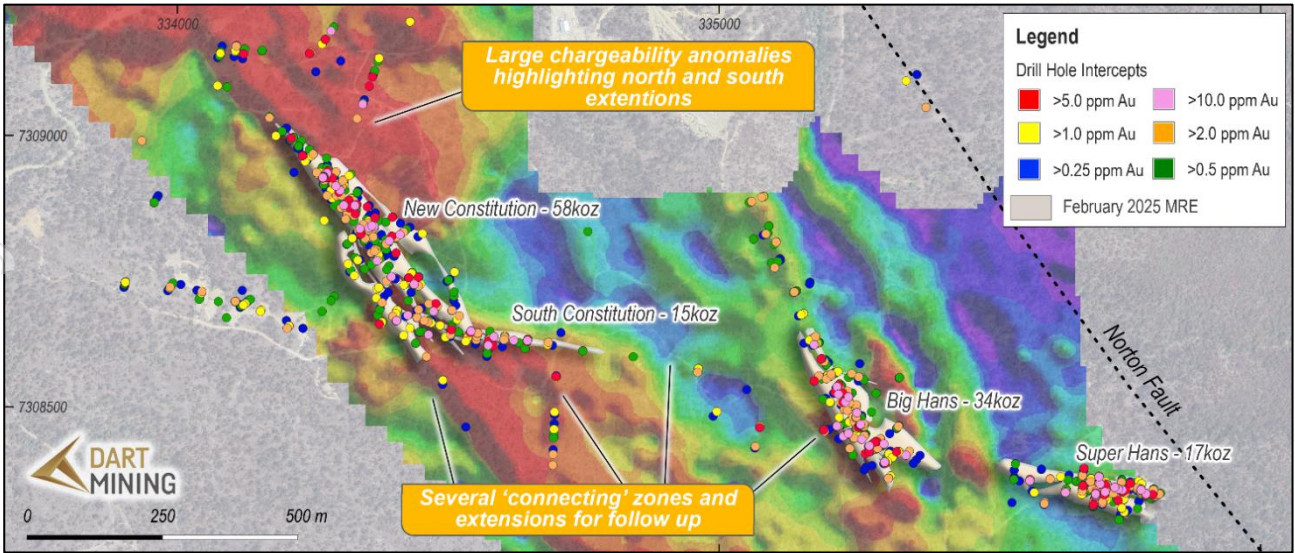


Figure 3 – Existing drill intercept highlights for the Southern Mineralised Corridor including (east to west) the Super Hans, Big Hans, New Constitution and South Constitution resource blocks with chargeability (geophysics) maps as the background.

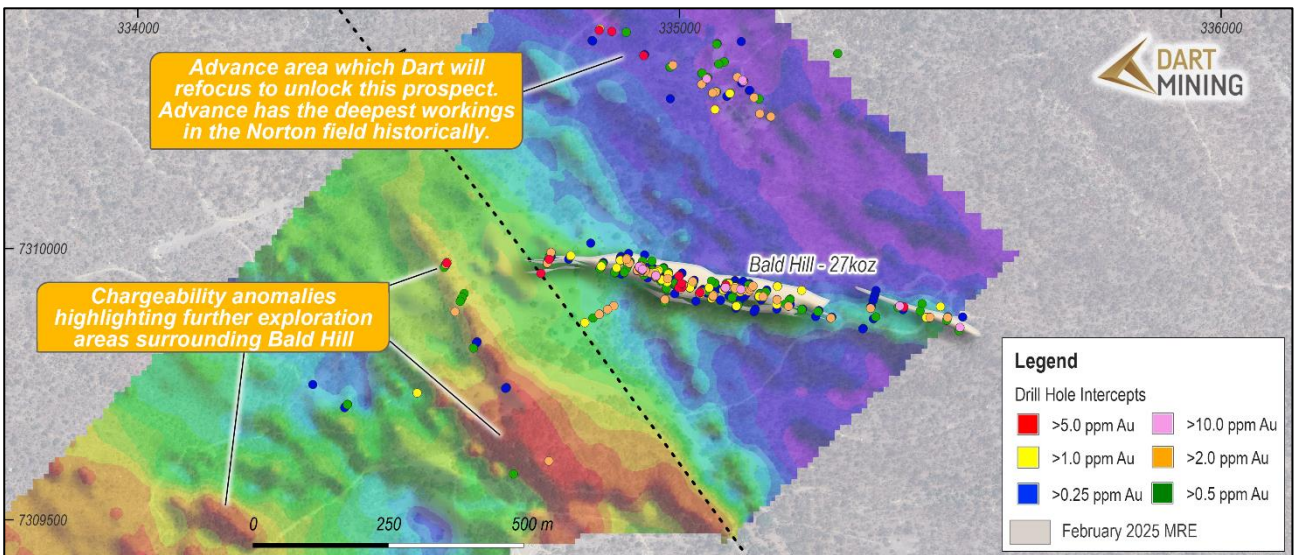


Figure 4 - Existing drill intercept highlights the Northern Mineralised Corridor including the Bald Hill resource block, Bald Hill East and historic Advance mine area with chargeability (geophysics) maps as the background.

NEXT STEPS

At the Triumph Gold Project, Dart intends to:

- Review pre-existing geophysics data to identify additional exploration targets;
- Drill test depth potential beneath the Southern Mineralised Corridor and chargeability anomaly to the Northwest of New Constitution;
- Continue Diamond drilling to expand the existing resources along strike and at depth;
- Undertake regional exploration, targeting the project area, as well as testing bulk tonnage targets including those at depth;
- Continue to review and identify additional prospective target zones for exploration in addition to existing resource areas; and
- Continue to review and identify further advanced projects throughout Central Queensland for potential acquisition and joint venture.

Approved for release by the Board of Directors.

For more information contact:

[Please see our Investor Hub for further information](#)

James Chirside

Managing Director

Dart Mining NL

jchirside@dartmining.com.au

+61 419 605 842

Owen Greenberger

Head of Exploration / Investor Relations

Dart Mining NL

ogreenberger@dartmining.com.au

About Dart Mining

The Triumph Gold Project is Dart's first step into an advanced intrusion related gold system project in Queensland. Dart will look to develop a regional presence in Queensland through advanced stage intrusion related and epithermal gold projects. Dart is farming into the Coonambula Antimony-Gold Project in Central Queensland. Dart Mining will refocus our Victorian exploration to Central Victoria around our highly prospective Rushworth Goldfield tenements.

Competent Person's Statement

The information in this report has been prepared, compiled, and verified by Mr Andrew Dawes, who is a Member of the Australasian Institute of Mining and Metallurgy and a Member of the Australian Institute of Geoscientists. Mr Andrew Dawes is employed by AHD Resources and consults to Dart Mining NL. Mr Dawes has sufficient experience that is relevant to the style of mineralisation and type of deposits under consideration and to the activity being undertaken to qualify as a competent person as defined in the 2012 Edition of the "Australasian Code for Reporting of Exploration Results, Mineral Resources and Ore Reserves". Mr. Dawes takes responsibility for the exploration results, and consents to the inclusion in the report of the matters based on his information in the form and context in which it appears.

Dart Mining confirms that it is not aware of any new information or data that materially affects the information included in this, or referenced relevant market announcements and, in the case of estimates of mineral resources or ore reserves, that all material assumptions and technical parameters underpinning the estimates continue to apply and have not materially changed

Forward-Looking Statement

Certain statements contained in this document constitute forward-looking statements. Forward-looking statements include, but are not limited to, Dart Mining's current expectations, estimates and projections about the industry in which Dart Mining operates, and beliefs and assumptions regarding Dart Mining's future performance. Such forward-looking statements are based on a number of estimates and assumptions made by the Company and its consultants in light of experience, current conditions and expectations of future developments which the Company believes are appropriate in the current circumstances. When used in this document, words such as; "anticipate", "could", "intends", "estimate", "potential", "plan", "seeks", "may", "should", and similar expressions are forward-looking statements. Although Dart Mining believes that its expectations presented in these forward-looking statements are reasonable, such statements are subject to known and unknown risks, uncertainties and other factors, which may cause the actual results, achievements and performance of the Company to be materially different from the future results and achievements expressed or implied by such forward-looking statements. Investors are cautioned that forward-looking information is no guarantee of future performance and accordingly, investors are cautioned not to place undue reliance on these forward-looking statements.

APPENDIX ONE

THE TRIUMPH GOLD PROJECT

The Triumph Gold Project (**Triumph** or **Project**) is located approximately 520km by road north of Brisbane, Queensland, and is well serviced by the coastal port city of Gladstone 80km by road to the north. The Project is comprised of two Exploration Permits: EPM 18486 and EPM 19343 covering an area of 137.6 sq.km or 43 sub-blocks in total. The Company has recently applied for additional area immediately adjacent east of the triumph project with EMP 29097.

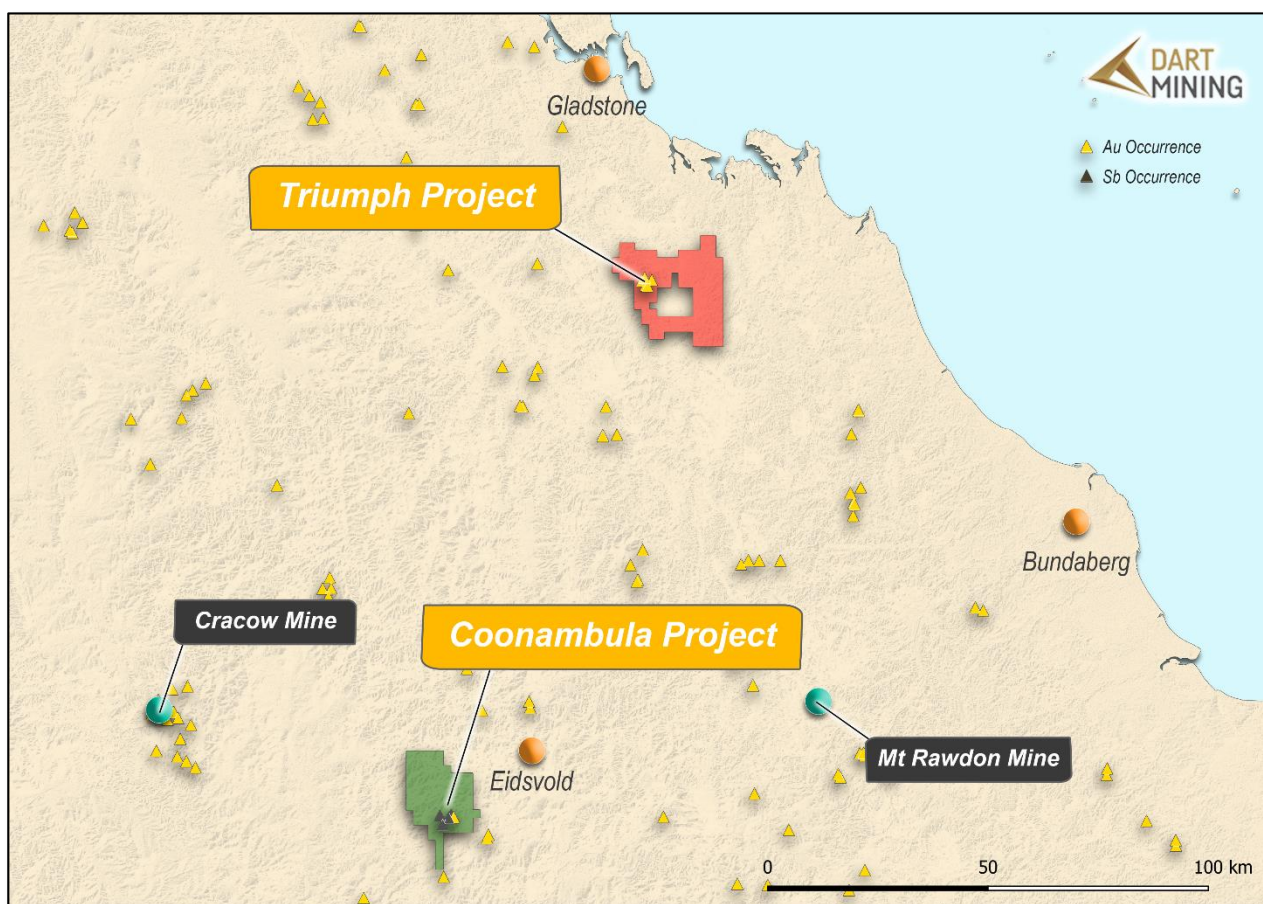


Figure 5: Location of the Triumph Gold Project

Local Geology

The Triumph Gold Project is located in the Yarrol belt of the Wandilla Province (New England Orogen), where late Permian to Middle Triassic leucocratic intrusives are scattered throughout Devonian and Carboniferous sediments. Known mineralisation at Triumph is located within one of these intrusive bodies, the Norton Tonalite.

The Norton Tonalite is dissected by numerous brittle faults and shears, as well as common minor mafic intrusive dykes of dolerite to basaltic composition. There is a distinct magnetic low signature at the core of the Norton Tonalite which is yet to be drill tested (ASX SHN: (ASX SHN: [Robust Maiden Resource at Triumph Gold Project](#) (31 March 2022)).

Structure

The Norton Tonalite is sinistrally offset by 1.8km by the northwest-trending Norton Fault, which can be traced for over 28km. Initially thought to post date mineralisation, a single drill hole has intersected the interpreted Norton Fault which returned 1m @ 2.9g/t Au and 1m @ 2.2g/t Au (ASX MKB: [Triumph Gold Project Update Amended](#) (25 July 2014) indicating that the fault may have been active during the main gold mineralisation event.

On a local scale the Norton Tonalite has two distinct fracture orientations that both host gold mineralisation. One fracture set is approximately east-west striking and the other is northwest-southeast striking. These fracture orientations are likely to have formed contemporaneously (ASX SHN: [Robust Maiden Resource at Triumph Gold Project](#) (31 March 2022)).

Mineralisation

Gold and silver mineralisation is hosted in quartz-sulphide veins with pyrite and arsenopyrite forming the bulk of the sulphide. Calcite is abundant in some lodes and present in most or all of them. Veins typically show sericite-chlorite alteration halos although this appears to be more associated with quartz veining rather than sulphides. Mineralisation at Triumph is interpreted as an intrusion related gold system (IRGS) (ASX SHN: [Robust Maiden Resource at Triumph Gold Project](#) (31 March 2022)).

Morrison (Intrusion-Related Gold Deposits in North Queensland, *GSQ Project final meeting 7th December, 2017*) stated that there were over 130 known IRGS in Queensland with 17 of these having resources over 1 million ounces. Sunshine have stated that Triumph is analogous to the Ravenswood IRGS gold deposit which has an endowment in excess of 5 million ounces of gold (ASX SHN: [Follow Up Drilling at Liontown](#) (19 June 2024)).

Resource Highlights

The Project is located across the historic Norton Goldfield and has a current JORC (2012) Mineral Resource Estimate prepared over five prospects in close proximity: Inferred gold resource of 150,091 oz made up of 2,16 million tonnes at a grade of 2.17g/t gold using a 1g/t cut-off has been declared in 2025.

More than 75% of the Triumph Inferred resource is within 100m of the surface and largely located within 1.2km of strike within a 6km long structural corridor (ASX SHN: [Follow Up Drilling at Liontown](#) (19 June 2024)). Dart considers that there is potential for proving up mineralisation below current drilling and open pit depths that may result in underground mining options subject to favourable economic studies.

APPENDIX TWO

JORC Code, 2012 Edition – Table 1

Section 1 Sampling Techniques and Data

(Criteria in this section apply to all succeeding sections.)

| Criteria | JORC Code explanation | Commentary |
|------------------------------|---|---|
| Sampling techniques | <ul style="list-style-type: none"> Nature and quality of sampling (eg cut channels, random chips, or specific specialised industry standard measurement tools appropriate to the minerals under investigation, such as down hole gamma sondes, or handheld XRF instruments, etc). These examples should not be taken as limiting the broad meaning of sampling. Include reference to measures taken to ensure sample representivity and the appropriate calibration of any measurement tools or systems used. Aspects of the determination of mineralisation that are Material to the Public Report. In cases where 'industry standard' work has been done this would be relatively simple (eg 'reverse circulation drilling was used to obtain 1 m samples from which 3 kg was pulverised to produce a 30 g charge for fire assay'). In other cases more explanation may be required, such as where there is coarse gold that has inherent sampling problems. Unusual commodities or mineralisation types (eg submarine nodules) may warrant disclosure of detailed information. | <ul style="list-style-type: none"> Sampling has been made on HQ and NQ diamond drilled core. Sampling is whole core sampling based on the geologists sub sampling (down to 30cm) logging definition. As it is whole core, no sub-sampling techniques were used. Samples are prepared with PREP-31B which includes crush to 70 % passing 2mm, riffle split off 1kg, pulverise split to better than 85% passing 75 microns. |
| Drilling techniques | <ul style="list-style-type: none"> Drill type (eg core, reverse circulation, open-hole hammer, rotary air blast, auger, Bangka, sonic, etc) and details (eg core diameter, triple or standard tube, depth of diamond tails, face-sampling bit or other type, whether core is oriented and if so, by what method, etc). | <ul style="list-style-type: none"> Drilling is diamond drilling either HQ or NQ core size and is triple tube drilling. Core is oriented where possible using the Reflex ACT III tool. |
| Drill sample recovery | <ul style="list-style-type: none"> Method of recording and assessing core and chip sample recoveries and results assessed. Measures taken to maximise sample recovery and ensure representative nature of the samples. Whether a relationship exists between sample recovery and grade and whether sample bias may have occurred due to | <ul style="list-style-type: none"> Core is measured after each run and core recovery based on the drill metres is recorded. Once in the transition and fresh material, Triumph experiences limited to no core loss with the exception of intensely broken zones where recovery is still > 95%. |

| Criteria | JORC Code explanation | Commentary |
|---|--|---|
| | <i>preferential loss/gain of fine/coarse material.</i> | <ul style="list-style-type: none"> No relationship has been observed between sample recovery and gold grade. |
| Logging | <ul style="list-style-type: none"> <i>Whether core and chip samples have been geologically and geotechnically logged to a level of detail to support appropriate Mineral Resource estimation, mining studies and metallurgical studies.</i> <i>Whether logging is qualitative or quantitative in nature. Core (or costean, channel, etc) photography.</i> <i>The total length and percentage of the relevant intersections logged.</i> | <ul style="list-style-type: none"> The drill core has been geologically and geotechnically logged to a level to support appropriate mineral resource estimation, mining studies and metallurgical studies. Core is logged both qualitatively and quantitatively. Core tray photography is both wet and dry photography. All 2,761m have been logged so far. Sampling is discrete based on observed mineralisation, alteration, key structural features. |
| Sub-sampling techniques and sample preparation | <ul style="list-style-type: none"> <i>If core, whether cut or sawn and whether quarter, half or all core taken.</i> <i>If non-core, whether riffled, tube sampled, rotary split, etc and whether sampled wet or dry.</i> <i>For all sample types, the nature, quality and appropriateness of the sample preparation technique.</i> <i>Quality control procedures adopted for all sub-sampling stages to maximise representivity of samples.</i> <i>Measures taken to ensure that the sampling is representative of the in situ material collected, including for instance results for field duplicate/second-half sampling.</i> <i>Whether sample sizes are appropriate to the grain size of the material being sampled.</i> | <ul style="list-style-type: none"> Core is whole core sampling so no sub-sampling techniques in the field are used which ensures appropriate in-situ representation. The PREP-31B method includes crush to 70 % passing 2mm, riffle split off 1kg, pulverise split to better than 85% passing 75 microns. The larger 1kg riffle split is larger than the standard 250g to reduce sample size bias. Sampling size is suitable to represent the mineralisation intersected. |
| Quality of assay data and laboratory tests | <ul style="list-style-type: none"> <i>The nature, quality and appropriateness of the assaying and laboratory procedures used and whether the technique is considered partial or total.</i> <i>For geophysical tools, spectrometers, handheld XRF instruments, etc, the parameters used in determining the analysis including instrument make and model, reading times, calibrations factors applied and their derivation, etc.</i> <i>Nature of quality control procedures adopted (eg standards, blanks, duplicates, external laboratory checks) and whether acceptable levels of accuracy (ie lack of bias) and precision have been established.</i> | <ul style="list-style-type: none"> All samples were analysed at ALS Global (ALS, Brisbane). All samples were assayed for Au using a 50g fire assay with AU-ICP22 determination as well as ME-MS61 for multi element. In the case where key elements are over range, Ag, Pb, Zn, and Cu was completed using OG-62. As completed with OG46, and Au completed with GRA22. The three types of QAQC samples were used were Certified Reference Material (CRM/Standards), Field Duplicates, and Blank material. The Blanks consist of store-bought sand which has been shown to be barren based on previous work. The Blanks are used to provide information of any possible contamination or calibration issues during the crush, pulverisation, and analytical phases. The field duplicates utilised the spear to collect a second sample to test repeatability (precision) of the original sample. The standards samples are used to |

| Criteria | JORC Code explanation | Commentary |
|--|---|--|
| | | <p>test the accuracy of the analyses.</p> <ul style="list-style-type: none"> • Three CRMs were OREAS standards and include: OREAS 277, OREAS 245, and OREAS 233. • QAQC samples were entered into the sample stream at a rate of 1 in 20. • Where lower detection limits were reported for assay results these were replaced by half the lower detection limit for geological interpretation and modelling purposes. |
| Verification of sampling and assaying | <ul style="list-style-type: none"> • <i>The verification of significant intersections by either independent or alternative company personnel.</i> • <i>The use of twinned holes.</i> • <i>Documentation of primary data, data entry procedures, data verification, data storage (physical and electronic) protocols.</i> • <i>Discuss any adjustment to assay data.</i> | <ul style="list-style-type: none"> • All core photos are reviewed by the Competent Person and he also visited site during early drilling. • No twinned holes have been undertaken. • Data from the field log sheets is entered into a digital database, primarily an Excel spreadsheet with subsequent conversion into an SQL database maintained by EarthSQL at the completion of the hole. The Excel spreadsheet has been created with a series of validation criteria in the form of pulldown menus for each data entry that restricts what can be entered into each field and significantly reduces the error associated with data entry. • Assay results are received from the laboratory in electronic (via email) format onsite and sent to Sample Data importing to the EarthSQL database. The electronic results are provided in an CSV file. |
| Location of data points | <ul style="list-style-type: none"> • <i>Accuracy and quality of surveys used to locate drill holes (collar and down-hole surveys), trenches, mine workings and other locations used in Mineral Resource estimation.</i> • <i>Specification of the grid system used.</i> • <i>Quality and adequacy of topographic control.</i> | <ul style="list-style-type: none"> • Collars are collected by Dart Geologists using a dGPS Trimble device and is suitable for collecting collar XYZ. • All collar coordinates are in MGA94 Z56. • Downhole survey has been surveyed using Reflex survey tool. • AHD Resources was provided a 3D elevation topography or digital terrain model (“DTM”) for the Triumph area from Dart Mining in the form of a .msh file. |
| Data spacing and distribution | <ul style="list-style-type: none"> • <i>Data spacing for reporting of Exploration Results.</i> • <i>Whether the data spacing and distribution is sufficient to establish the degree of geological and grade continuity appropriate for the Mineral Resource and Ore Reserve estimation procedure(s) and classifications applied.</i> • <i>Whether sample compositing has been applied.</i> | <ul style="list-style-type: none"> • The drilling is in fill drilling of the existing Mineral Resource Estimate. As such, the geological continuity is known and expected. Where new lodes are intercepted, multiple drill holes confirm the new lodes along strike. Given the close proximity to the existing MRE, the spacing is sufficient to have confidence in the continuity. |

| Criteria | JORC Code explanation | Commentary |
|--|--|---|
| Orientation of data in relation to geological structure | <ul style="list-style-type: none"> Whether the orientation of sampling achieves unbiased sampling of possible structures and the extent to which this is known, considering the deposit type. If the relationship between the drilling orientation and the orientation of key mineralised structures is considered to have introduced a sampling bias, this should be assessed and reported if material. | <ul style="list-style-type: none"> No sample compositing has been applied. Drilling is typically orientated perpendicular to the interpreted strike of mineralization where possible. No orientation-based sampling bias has been recognised. However, in some cases the drilling has been sub-parallel to mineralised structures. This has been accounted for in the geological interpretation of the mineral resources and modelled as true thickness based on the interpretation. |
| Sample security | <ul style="list-style-type: none"> The measures taken to ensure sample security. | <ul style="list-style-type: none"> Samples are under the care of Dart Geologists from logging through to delivery to ALS in Brisbane. |
| Audits or reviews | <ul style="list-style-type: none"> The results of any audits or reviews of sampling techniques and data. | <ul style="list-style-type: none"> No external reviews of audits on this drilling have been completed. Drilling has been reviewed internally within Dart. |

Section 2 Reporting of Exploration Results

(Criteria listed in the preceding section also apply to this section.)

| Criteria | JORC Code explanation | Commentary |
|--|--|--|
| Mineral tenement and land tenure status | <ul style="list-style-type: none"> Type, reference name/number, location and ownership including agreements or material issues with third parties such as joint ventures, partnerships, overriding royalties, native title interests, historical sites, wilderness or national park and environmental settings. The security of the tenure held at the time of reporting along with any known impediments to obtaining a licence to operate in the area. | <ul style="list-style-type: none"> The Triumph project consists of EPM 18486 and EPM 19343, both 100% owned by Dart Exploration (QLD) Pty Ltd, a wholly owned subsidiary of Dart Mining NL. The tenements are in good standing, and no known impediments exist. ML80035 (Norton Mine ML or Norton Mining Lease) (covering an area of 0.2km) is located within the project area and is excluded from the tenure. Exploration is prohibited within a small area of Category B environmentally protected area as well as a National Park shown in Figure 2. The current approved Environmental Authority (EA) allows for advanced exploration activities to occur up to the National Park (NP) boundary. |
| Exploration done by other parties | <ul style="list-style-type: none"> Acknowledgment and appraisal of exploration by other parties. | <ul style="list-style-type: none"> The first record of modern exploration being undertaken in the area was carried out by Delhi Australian Petroleum Limited (Delhi) from 1966 to 1971. Initially Delhi undertook gridding, |

| Criteria | JORC Code explanation | Commentary |
|----------|-----------------------|---|
| | | <p>mapping of the old workings, dump sampling and an IP survey. The IP survey highlighted five anomalous zones in and around the old Norton workings. Three of these zones, at the Frampton, Bald Hill and Galena prospects, were drill tested with five holes by Noranda Australia Limited in 1969 in joint venture with Delhi. Following Noranda's withdrawal from the joint venture Delhi completed a further three drillholes, one at each of the Bald Hill, Frampton and New Constitution prospects. Frampton is now part of ML 80035. Significant gold intersections in drillholes outside of ML 80035 were reported, for example NCDH-1 at the New Constitution prospect that returned 1.5 m @ 5.5 g/t Au and 24.5 g/t Ag from 109.8 m depth.</p> <ul style="list-style-type: none"> • A significant amount of exploration was undertaken by Amoco Minerals Australia Company, its successor Cyprus Minerals Australia Company and joint venture partners Pacific Goldmines, Astrik Resources and Climax Mining Limited on EPM 3581 between 1985 and 1988. Much of this work was focused on close-spaced drilling at the Frampton, Chandler and Never Never prospects now within the Norton Gold Fields ML – to outline ore reserves. Within the area of EPM 18486 the work on historical EPM 3581 consisted of stream sediment, rock and float sampling as well as trenching at Bald Hill and Han's Big Dyke and drilling at Bald Hill. Nine holes at the eastern end of the Frampton-Chandler prospect also lie within SHN's EPM 18486. Seven of these holes intersected narrow (0.2 m to 1 m) intervals of high-grade gold mineralisation – examples being 1 m at 16.6 g/t, 1 m at 12.0 g/t and 0.2 m at 24.6 g/t. • From 1993 to 1999 much of the area was held by Gold Exploration Pty Ltd and subsequently Coffee Gold NL under EPM 9778. MDL 130, then covering the core of the Norton goldfield, was excluded from this project. The work undertaken during this period was minimal and consisted mainly of rock chip sampling and geological reconnaissance work. |

| Criteria | JORC Code explanation | Commentary |
|----------------|--|--|
| | | <ul style="list-style-type: none"> Following a hiatus of several years the Norton Goldfield and surrounding area was held under EPM 13584 and ML 80035, initially by AT Prowse and latterly by Norton Gold Fields Limited from 2002. EPM 13584 has been surrendered but ML 80035 still exists. |
| Geology | <ul style="list-style-type: none"> <i>Deposit type, geological setting and style of mineralisation.</i> | <ul style="list-style-type: none"> The local geology comprises the metasedimentary Wandilla Formation (part of the Devonian-Carboniferous Curtis Island Group), intruded by a series of complex Permo-Triassic granitoid units and complexes including the Many Peaks Granodiorite, Castletower Granite and Norton Tonalite. The project is positioned on the Norton Splay, a regional-scale north-west trending fault located 7km to the east of the upper Boyne rift valley (part of a major crustal dislocation of the Yarrol Fault Zone). The fault divides the Norton Tonalite complex, with a majority of the Wandilla Formation to the west and granitoids to the east. Most of the Norton Tonalite complex is recessive, forming a 25 km² area of low relief. Approximately 90% of the tenure is concealed beneath shallow sedimentary cover rocks (<10 m thick) thus masking prospective basement rocks. The intrusive phases include the host Norton Tonalite, interpreted as an apophysis of the Permo-Triassic (268 Ma) Many Peaks Granodiorite that intrudes and hornfelses the Wandilla Formation. The Norton Tonalite pluton is compositionally zoned from marginal gabbro and diorite to quartz diorite, tonalite, granodiorite and possibly monzogranite. The Castletower leuco-granite south of the Norton Tonalite is interpreted as Triassic (221 Ma) and therefore should cut the Norton Tonalite. A later monzodiorite/aplite phase is present as a series of dikes and is interpreted to be related to the main phase of gold mineralisation at Triumph and is interpreted as being of Triassic age. Gold mineralisation is localised along the contact between Norton Tonalite and the monzodiorite and monzonite phases of the dikes and is inferred to be genetically related to a quartz |

| Criteria | JORC Code explanation | Commentary |
|----------|-----------------------|--|
| | | <p>monzonite phase in the interior of the dikes. Portions of it are sheared and heavily altered, with several of these zones hosting orebodies at the Norton Goldfield. Within this area and surrounds, gold-silver-copper-lead-zinc-arsenic mineralisation within sulphidic zones is hosted in composite intrusions of several types of dioritic and granodioritic rock. These intrusives exhibit at least two phases of alteration, which may represent at least two different distinct phases or a spatial association and fractionation between the phases. Alteration within and peripheral to mineralised sulphidic veins occurs as spatially and temporally associated strong to intense phyllic (sericite/muscovite ± pyrite-silica) alteration with predominantly narrow vein selvages. Pockets of weak to strong potassic (biotite-K feldspar) alteration associated with weak copper mineralisation occur in rare outcrop to the north of the Norton township.</p> <ul style="list-style-type: none"> • Trachyandesite dikes and plugs cut the gold mineralisation and are also cut by the Norton Fault. Examples include a plug and dike swarm at the Advance prospect which cuts the mineralisation there. The trachyandesite is interpreted as Triassic by comparison with regional units. Vesicular basalt grading to dolerite dikes also cut the mineralisation, but their exact relation to the trachyandesite is unclear. The dikes are in the peripheral parts of the lode away from and not connected with the monzodiorite dikes. It is possible that all the monzodiorite, trachyandesite and basaltic dikes are all part of one Late Triassic volcanic formation, but this is not clearly established. • The mineralisation at Triumph is interpreted as an intrusion related gold system (IRGS). In these systems, metals are derived from a central mineralising granitic intrusion and generally show a strong metal zonation. Gold can be focused more distally, up to 1-3 km from the intrusion. Most IRGS show strong associations with bismuth, tungsten, tin, tellurium, arsenic, |

| Criteria | JORC Code explanation | Commentary |
|-------------------------------|---|---|
| | | <p>molybdenum and antimony. They are typically low in sulphide content and show weak areal extent of hydrothermal alteration. IRGS are generally associated with felsic plutons and stocks, of intermediate oxidation states, with both magnetite and ilmenite series represented. These gold systems are generally located in continental settings in-board of convergent plate margins.</p> <ul style="list-style-type: none"> • Within this area and surrounds, gold-silver-copper-lead-zinc-arsenic mineralisation within sulphidic zones is hosted in composite intrusions of several types of dioritic and granodioritic rock. These intrusives exhibit at least two phases of alteration, which may represent at least two different distinct phases or a spatial association and fractionation between the phases. Alteration within and peripheral to mineralised sulphidic veins occurs as spatially and temporally associated strong to intense phyllic (sericite/muscovite ± pyrite-silica) alteration with predominantly narrow vein selvages. Pockets of weak to strong potassic (biotite-K feldspar) alteration associated with weak copper mineralisation occur in rare outcrop to the north of the Norton township. • Gold mineralisation is hosted within quartz-sulphide veins and is associated with pyrite and arsenopyrite, with gold and silver likely contained within the pyrite, with the iron pyrite likely an associated but not host sulphide. The veins typically show a sericite(-chlorite) alteration halo, however this appears to be more associated with the quartz veining itself rather than sulphides. Considering this association, it could be hypothesised that the gold mineralisation is related to a later phase. |
| Drill hole Information | <ul style="list-style-type: none"> • <i>A summary of all information material to the understanding of the exploration results including a tabulation of the following information for all Material drill holes:</i> <ol style="list-style-type: none"> 1. <i>easting and northing of the drill hole collar</i> 2. <i>elevation or RL (Reduced Level – elevation above sea level in metres) of the drill hole collar</i> 3. <i>dip and azimuth of the hole</i> 4. <i>down hole length and interception depth</i> | <ul style="list-style-type: none"> • A complete account of drillholes completed is outlined in APPENDIX Three: Drillhole Summary. |

| Criteria | JORC Code explanation | Commentary |
|---|---|--|
| | <p>5. hole length.</p> <ul style="list-style-type: none"> If the exclusion of this information is justified on the basis that the information is not Material and this exclusion does not detract from the understanding of the report, the Competent Person should clearly explain why this is the case. | |
| Data aggregation methods | <ul style="list-style-type: none"> In reporting Exploration Results, weighting averaging techniques, maximum and/or minimum grade truncations (eg cutting of high grades) and cut-off grades are usually Material and should be stated. Where aggregate intercepts incorporate short lengths of high grade results and longer lengths of low grade results, the procedure used for such aggregation should be stated and some typical examples of such aggregations should be shown in detail. The assumptions used for any reporting of metal equivalent values should be clearly stated. | <ul style="list-style-type: none"> Weighted average based on sample length and gold grade has been applied to compositing drill hole assay data for domain compositing. No metal equivalents have been used. |
| Relationship between mineralisation widths and intercept lengths | <ul style="list-style-type: none"> These relationships are particularly important in the reporting of Exploration Results. If the geometry of the mineralisation with respect to the drill hole angle is known, its nature should be reported. If it is not known and only the down hole lengths are reported, there should be a clear statement to this effect (eg 'down hole length, true width not known'). | <ul style="list-style-type: none"> Drilling orientations relative to the interpretation of veins is not always ideal for the deposits at Triumph due to topographic constraints. Diamond core structural measurements through mineralised vein intercepts were used to guide the vein 3D modelling interpretation. Therefore, in areas where intercepts were at a low angle relative to the interpretation, the downhole mineralisation length was taken into account in the 3D interpretation to represent true thickness. As the veins are sub-vertical, drilling has been undertaken from both sides of the vein structures. The interpretation shows continuity along strike and at depth from the drilling results to date. Core orientation and structure/vein orientations are collected. |
| Diagrams | <ul style="list-style-type: none"> Appropriate maps and sections (with scales) and tabulations of intercepts should be included for any significant discovery being reported. These should include, but not be limited to a plan view of drill hole collar locations and appropriate sectional views. | <ul style="list-style-type: none"> Included in the body of the announcement. |
| Balanced reporting | <ul style="list-style-type: none"> Where comprehensive reporting of all Exploration Results is not practicable, representative reporting of both low and high grades and/or widths should be practiced to avoid misleading reporting of Exploration Results. | <ul style="list-style-type: none"> Not relevant to this announcement as no new sample results are being reported. |
| Other substantive | <ul style="list-style-type: none"> Other exploration data, if meaningful and material, should be reported including (but not limited to): geological observations; geophysical | <ul style="list-style-type: none"> IP geophysical data presented or discussed in this report was |

| Criteria | JORC Code explanation | Commentary |
|-------------------------|---|---|
| exploration data | <i>survey results; geochemical survey results; bulk samples – size and method of treatment; metallurgical test results; bulk density, groundwater, geotechnical and rock characteristics; potential deleterious or contaminating substances.</i> | collected by Roar Resources (100% owned by Metal Bank). Metal Factor processing was applied to the dipole IP data. Metal Factor processing creates a single image to enhance elevated IP chargeability coincident with lower IP resistivity. Remodeling of the 2011 IP data was completed by consultant Mike Sexton using far superior 2D geophysical modelling software in 2016. (ASX: MBK Nov 2016 , MBK Jan 2017) |
| Further work | <ul style="list-style-type: none"> <i>The nature and scale of planned further work (eg tests for lateral extensions or depth extensions or large-scale step-out drilling).</i> <i>Diagrams clearly highlighting the areas of possible extensions, including the main geological interpretations and future drilling areas, provided this information is not commercially sensitive.</i> | <ul style="list-style-type: none"> Plans for further work are outlined in the body of the announcement. |

APPENDIX THREE:

TABLE 1 DRILL HOLE SUMMARY OF CURRENT DRILLING

| Hole ID | Easting | Northing | Elevation | Max Depth (m) | Dip (deg) | Azimuth (deg) | Assay Results |
|----------|----------|-----------|-----------|---------------|-----------|---------------|-------------------|
| TRDD002A | 334274.8 | 7308973 | 152.64 | 128.6 | -54 | 220 | Available in full |
| TRDD001A | 334293.9 | 7308955 | 155.05 | 147.8 | -55 | 225 | Available in full |
| TRDD002 | 334276.8 | 7308974 | 152.64 | 47.2 | -55 | 215 | Available in full |
| TRDD003 | 334435.3 | 7308653 | 164.1 | 185.4 | -55 | 55 | Available in full |
| TRDD004 | 334696.1 | 7308657 | 163.77 | 122.3 | -55 | 190 | Available in full |
| TRDD005 | 334478.9 | 7308864 | 152.74 | 161.3 | -55 | 235 | Available in full |
| TRDD006 | 334385.7 | 7308998 | 157.78 | 209.3 | -55 | 230 | Available in full |
| TRDD007 | 334377 | 7308717 | 147.7 | 158.3 | -55 | 60 | Available in full |
| TRDD008 | 334444.6 | 7308626 | 168.73 | 83.2 | -55 | 145 | Available in full |
| TRDD009 | 334446 | 7308611 | 168.73 | 170.3 | -55 | 65 | Available in full |
| TRDD010 | 334303 | 7308936 | 151.59 | 42.2 | -50 | 165 | Available in full |
| TRDD010A | 334303 | 7308937 | 151.59 | 149 | -50 | 225 | Available in full |
| TRDD011 | 335302.6 | 7308498 | 156.3 | 194.1 | -50 | 165 | Available in full |
| TRDD012 | 335300.4 | 7308495 | 156.42 | 235.9 | -45 | 225 | Available in full |
| TRDD013 | 334502.2 | 7308895.5 | 153.6 | 408 | -60 | 225 | Available in full |
| TRDD014 | 334269.8 | 7308900.9 | 142.6 | 318 | -50 | 50 | Available in full |

TABLE 2 ASSAY SUMMARY FOR TRDD014

| Hole ID | From (m) | To (m) | Width (m) | Au (g/t) | Ag (g/t) | Pb (ppm) | Zn (ppm) | As (ppm) | Cu (ppm) |
|---------|----------|--------|-----------|----------|----------|----------|----------|----------|----------|
| TRDD014 | 28 | 28.3 | 0.3 | 0.003 | 0.89 | 133.5 | 452 | 211 | 30.5 |
| TRDD014 | 32.5 | 33 | 0.5 | 0.014 | 0.69 | 125.5 | 561 | 16.8 | 13.8 |
| TRDD014 | 33 | 33.5 | 0.5 | 0.059 | 1.87 | 398 | 1460 | 69 | 20.8 |
| TRDD014 | 33.5 | 34 | 0.5 | 1.435 | 66.5 | 3530 | 2080 | 1195 | 481 |
| TRDD014 | 34 | 34.5 | 0.5 | 1.575 | 97.1 | 4760 | 3470 | 2810 | 618 |
| TRDD014 | 34.5 | 35 | 0.5 | 8.54 | 41.5 | 3050 | 19500 | 18050 | 345 |
| TRDD014 | 35 | 35.6 | 0.6 | 0.941 | 11.2 | 160.5 | 1780 | 12450 | 920 |
| TRDD014 | 35.6 | 36 | 0.4 | 0.031 | 2.58 | 43.2 | 720 | 140.5 | 394 |
| TRDD014 | 36 | 36.5 | 0.5 | 0.025 | 0.27 | 21.9 | 122 | 89.7 | 35.2 |
| TRDD014 | 36.5 | 37 | 0.5 | 0.006 | 0.33 | 10.8 | 56 | 95.9 | 68.5 |
| TRDD014 | 37 | 37.5 | 0.5 | 0.006 | 0.17 | 9.7 | 76 | 220 | 36.4 |
| TRDD014 | 37.5 | 38 | 0.5 | 0.229 | 4.16 | 82.7 | 436 | 1045 | 220 |
| TRDD014 | 39.9 | 40.5 | 0.6 | 0.19 | 7.05 | 48.4 | 266 | 1125 | 267 |
| TRDD014 | 40.5 | 41.1 | 0.6 | 0.01 | 0.38 | 7.8 | 36 | 112.5 | 32.9 |
| TRDD014 | 41.1 | 41.6 | 0.5 | 0.069 | 0.88 | 15.3 | 125 | 1770 | 77.2 |
| TRDD014 | 47 | 47.3 | 0.3 | 0.084 | 1.67 | 73.8 | 518 | 950 | 53.1 |
| TRDD014 | 48.8 | 49.3 | 0.5 | 0.025 | 0.55 | 18.4 | 115 | 94.8 | 59.3 |
| TRDD014 | 49.3 | 49.7 | 0.4 | 0.192 | 2.56 | 83.8 | 917 | 223 | 114 |
| TRDD014 | 49.7 | 50.2 | 0.5 | 0.319 | 2.91 | 71.7 | 276 | 2680 | 185 |
| TRDD014 | 52.2 | 52.8 | 0.6 | 0.014 | 2.35 | 228 | 661 | 51.7 | 65.6 |
| TRDD014 | 54 | 54.5 | 0.5 | 0.153 | 4.65 | 335 | 811 | 184.5 | 126 |
| TRDD014 | 54.5 | 55 | 0.5 | 0.003 | 0.15 | 8.6 | 41 | 25.3 | 21 |
| TRDD014 | 55 | 55.5 | 0.5 | 0.47 | 15.7 | 478 | 485 | 296 | 164.5 |
| TRDD014 | 55.5 | 56 | 0.5 | 0.027 | 1.58 | 48.3 | 179 | 26.5 | 64.9 |

| | | | | | | | | | |
|---------|-------|-------|------|-------|-------|-------|-------|-------|-------|
| TRDD014 | 56 | 56.4 | 0.4 | 0.358 | 2 | 382 | 1185 | 3500 | 121 |
| TRDD014 | 56.4 | 56.85 | 0.45 | 28.2 | 121 | 20500 | 70500 | 23000 | 2350 |
| TRDD014 | 56.85 | 57.4 | 0.55 | 0.369 | 0.61 | 51.7 | 185 | 2840 | 42.9 |
| TRDD014 | 57.4 | 58 | 0.6 | 0.006 | 0.14 | 16.5 | 60 | 38.4 | 15.3 |
| TRDD014 | 59.1 | 59.7 | 0.6 | 0.014 | 0.52 | 71 | 148 | 40.2 | 30.3 |
| TRDD014 | 64.7 | 65.2 | 0.5 | 0.521 | 6.66 | 1245 | 3710 | 763 | 142 |
| TRDD014 | 69.1 | 69.7 | 0.6 | 0.288 | 2.36 | 161.5 | 651 | 4970 | 99.8 |
| TRDD014 | 72.9 | 73.3 | 0.4 | 0.102 | 1.34 | 270 | 2120 | 1245 | 38.3 |
| TRDD014 | 73.8 | 74.2 | 0.4 | 0.009 | 0.71 | 73.1 | 364 | 33.8 | 31.4 |
| TRDD014 | 80 | 80.5 | 0.5 | 0.006 | 0.35 | 8.9 | 42 | 18.8 | 13.8 |
| TRDD014 | 80.5 | 81 | 0.5 | 0.036 | 0.89 | 49.2 | 484 | 175 | 34.2 |
| TRDD014 | 81 | 81.5 | 0.5 | 0.016 | 0.56 | 13.4 | 143 | 158 | 23.4 |
| TRDD014 | 81.5 | 82 | 0.5 | 0.731 | 2.36 | 368 | 583 | 7150 | 131 |
| TRDD014 | 82 | 82.6 | 0.6 | 1.08 | 5.79 | 734 | 2880 | 4580 | 130 |
| TRDD014 | 82.6 | 83 | 0.4 | 0.019 | 0.87 | 15.3 | 84 | 86.2 | 24.8 |
| TRDD014 | 83 | 83.5 | 0.5 | 0.092 | 1.77 | 313 | 1190 | 206 | 44.5 |
| TRDD014 | 83.5 | 84 | 0.5 | 0.075 | 1.12 | 53.6 | 104 | 210 | 23.9 |
| TRDD014 | 84 | 84.5 | 0.5 | 0.267 | 0.43 | 23.5 | 105 | 498 | 57.7 |
| TRDD014 | 84.5 | 85 | 0.5 | 0.023 | 0.23 | 10.2 | 37 | 53.1 | 10.3 |
| TRDD014 | 85 | 85.5 | 0.5 | 0.047 | 0.59 | 27.1 | 110 | 115 | 23.4 |
| TRDD014 | 85.5 | 86 | 0.5 | 0.632 | 2.59 | 94.8 | 449 | 843 | 88.5 |
| TRDD014 | 86 | 86.5 | 0.5 | 0.229 | 1.77 | 53 | 1350 | 1680 | 67.2 |
| TRDD014 | 86.5 | 87.1 | 0.6 | 0.16 | 0.97 | 23.1 | 279 | 402 | 91.7 |
| TRDD014 | 87.1 | 87.5 | 0.4 | 0.26 | 0.97 | 96.2 | 162 | 446 | 56.8 |
| TRDD014 | 87.5 | 88 | 0.5 | 1.01 | 6.75 | 255 | 3110 | 2540 | 259 |
| TRDD014 | 88 | 88.5 | 0.5 | 0.006 | 0.05 | 8.4 | 41 | 15.5 | 26.5 |
| TRDD014 | 88.5 | 89 | 0.5 | 0.001 | 0.05 | 7.8 | 30 | 8.6 | 21.8 |
| TRDD014 | 90.8 | 91.2 | 0.4 | 0.495 | 4.36 | 1015 | 4180 | 149.5 | 81.4 |
| TRDD014 | 91.2 | 91.7 | 0.5 | 0.737 | 1.52 | 601 | 256 | 2130 | 51.3 |
| TRDD014 | 99.5 | 99.8 | 0.3 | 0.542 | 6.23 | 82.9 | 830 | 111.5 | 271 |
| TRDD014 | 101.9 | 102.4 | 0.5 | 0.041 | 15.45 | 27.2 | 1630 | 26.3 | 2110 |
| TRDD014 | 102.4 | 103 | 0.6 | 0.011 | 5.62 | 23 | 511 | 136.5 | 687 |
| TRDD014 | 103 | 103.5 | 0.5 | 0.224 | 6.84 | 25.1 | 553 | 364 | 1255 |
| TRDD014 | 103.5 | 104 | 0.5 | 0.061 | 11.05 | 131.5 | 789 | 68.1 | 110.5 |
| TRDD014 | 104 | 104.5 | 0.5 | 0.006 | 4 | 61.7 | 93 | 38.6 | 41.7 |
| TRDD014 | 104.5 | 105 | 0.5 | 0.014 | 0.76 | 18.5 | 63 | 4 | 30.7 |
| TRDD014 | 105 | 105.5 | 0.5 | 0.005 | 0.54 | 13.8 | 247 | 10.6 | 101 |
| TRDD014 | 105.5 | 106 | 0.5 | 0.003 | 0.55 | 26.1 | 290 | 6.2 | 106.5 |
| TRDD014 | 106 | 106.5 | 0.5 | 0.028 | 0.64 | 84.3 | 601 | 126 | 58.1 |
| TRDD014 | 106.5 | 107 | 0.5 | 0.014 | 0.41 | 56.8 | 154 | 117.5 | 17.1 |
| TRDD014 | 107 | 107.5 | 0.5 | 0.006 | 0.89 | 43.6 | 264 | 27.7 | 93.4 |
| TRDD014 | 107.5 | 108 | 0.5 | 0.045 | 0.41 | 24.7 | 157 | 43.4 | 47.7 |
| TRDD014 | 108 | 108.5 | 0.5 | 0.024 | 0.08 | 9.2 | 41 | 33.1 | 17.6 |
| TRDD014 | 108.5 | 109 | 0.5 | 0.012 | 0.56 | 97.6 | 1115 | 6.8 | 28.8 |
| TRDD014 | 109 | 109.4 | 0.4 | 0.055 | 0.59 | 28 | 77 | 174 | 38.9 |
| TRDD014 | 109.4 | 109.9 | 0.5 | 0.08 | 30.7 | 173.5 | 1160 | 25.4 | 3910 |
| TRDD014 | 110.6 | 111.2 | 0.6 | 0.01 | 0.44 | 17.2 | 156 | 76.2 | 38.6 |
| TRDD014 | 111.2 | 111.8 | 0.6 | 0.467 | 35.7 | 508 | 72 | 137 | 172 |
| TRDD014 | 111.8 | 112.2 | 0.4 | 0.005 | 0.2 | 13.3 | 111 | 161.5 | 28.5 |

| | | | | | | | | | |
|---------|--------|--------|------|-------|-------|-------|-------|-------|-------|
| TRDD014 | 116.1 | 116.6 | 0.5 | 6.37 | 13.35 | 327 | 6610 | 7780 | 490 |
| TRDD014 | 118.2 | 118.5 | 0.3 | 7.64 | 44.4 | 1165 | 9580 | 8370 | 1275 |
| TRDD014 | 123.1 | 123.6 | 0.5 | 0.125 | 0.98 | 21.8 | 137 | 92.5 | 39.4 |
| TRDD014 | 126.6 | 126.9 | 0.3 | 0.057 | 0.9 | 26.3 | 699 | 113.5 | 80.7 |
| TRDD014 | 131.8 | 132.3 | 0.5 | 0.638 | 3.79 | 218 | 1015 | 243 | 88 |
| TRDD014 | 144 | 144.5 | 0.5 | 0.076 | 0.37 | 29.5 | 317 | 44.9 | 13.4 |
| TRDD014 | 148.5 | 149 | 0.5 | 0.319 | 0.5 | 29.7 | 127 | 387 | 22.9 |
| TRDD014 | 154.4 | 154.8 | 0.4 | 1.31 | 7.61 | 788 | 3330 | 4220 | 68.8 |
| TRDD014 | 161.5 | 162 | 0.5 | 0.069 | 0.66 | 86.5 | 166 | 260 | 37.6 |
| TRDD014 | 162 | 162.6 | 0.6 | 0.11 | 0.63 | 98.8 | 164 | 311 | 29.6 |
| TRDD014 | 166.3 | 166.9 | 0.6 | 2.14 | 3.87 | 261 | 1300 | 9880 | 131.5 |
| TRDD014 | 171.7 | 172.1 | 0.4 | 2.79 | 6.93 | 235 | 948 | 4060 | 482 |
| TRDD014 | 172.1 | 172.7 | 0.6 | 1.49 | 6.57 | 82.3 | 175 | 2880 | 417 |
| TRDD014 | 182.9 | 183.5 | 0.6 | 1.35 | 7.98 | 486 | 287 | 7280 | 72.5 |
| TRDD014 | 185.1 | 185.7 | 0.6 | 0.039 | 0.4 | 109.5 | 274 | 62.6 | 25.8 |
| TRDD014 | 185.7 | 186.2 | 0.5 | 0.853 | 4.68 | 366 | 3380 | 1595 | 299 |
| TRDD014 | 189.6 | 189.9 | 0.3 | 2.38 | 10.1 | 562 | 2610 | 16550 | 250 |
| TRDD014 | 190.8 | 191.1 | 0.3 | 0.097 | 1.24 | 195.5 | 855 | 310 | 65.2 |
| TRDD014 | 197.8 | 198.15 | 0.35 | 0.702 | 0.78 | 274 | 544 | 4260 | 38 |
| TRDD014 | 206.6 | 207.2 | 0.6 | 0.136 | 2.2 | 459 | 2050 | 414 | 44.2 |
| TRDD014 | 221.6 | 222.2 | 0.6 | 0.054 | 0.39 | 25.8 | 89 | 94.6 | 21 |
| TRDD014 | 226.35 | 226.7 | 0.35 | 0.057 | 1.33 | 516 | 378 | 97.2 | 47.7 |
| TRDD014 | 230.5 | 231 | 0.5 | 0.004 | 0.09 | 8.9 | 48 | 10.6 | 24 |
| TRDD014 | 231 | 231.5 | 0.5 | 0.129 | 0.68 | 106.5 | 372 | 375 | 56.4 |
| TRDD014 | 231.5 | 232 | 0.5 | 0.048 | 0.61 | 73.7 | 202 | 113 | 63.1 |
| TRDD014 | 232 | 232.5 | 0.5 | 0.007 | 0.14 | 10.8 | 51 | 14.6 | 24.7 |
| TRDD014 | 232.5 | 233 | 0.5 | 0.02 | 0.57 | 75.7 | 144 | 47.5 | 35.2 |
| TRDD014 | 233 | 233.65 | 0.65 | 0.035 | 0.4 | 77.9 | 298 | 368 | 45.5 |
| TRDD014 | 233.65 | 234.1 | 0.45 | 24.6 | 74 | 1350 | 12850 | 59000 | 583 |
| TRDD014 | 234.1 | 234.5 | 0.4 | 0.029 | 0.39 | 15.2 | 96 | 182.5 | 35.4 |
| TRDD014 | 234.5 | 235 | 0.5 | 0.041 | 0.66 | 95.7 | 64 | 481 | 46.9 |
| TRDD014 | 235 | 235.6 | 0.6 | 0.266 | 1.6 | 64.1 | 591 | 276 | 53.2 |
| TRDD014 | 271 | 271.5 | 0.5 | 0.037 | 1.13 | 50.3 | 54 | 70.3 | 45.8 |
| TRDD014 | 271.5 | 272 | 0.5 | 0.004 | 0.14 | 9.8 | 48 | 8.5 | 62.9 |
| TRDD014 | 272 | 272.5 | 0.5 | 0.019 | 0.52 | 52 | 105 | 70.2 | 80.8 |
| TRDD014 | 280.2 | 280.6 | 0.4 | 0.019 | 1.14 | 62.4 | 226 | 16.3 | 41.4 |
| TRDD014 | 282.3 | 282.8 | 0.5 | 0.057 | 0.85 | 306 | 843 | 327 | 29 |
| TRDD014 | 286.6 | 287 | 0.4 | 0.046 | 0.22 | 25.3 | 88 | 167.5 | 44.4 |
| TRDD014 | 287 | 287.3 | 0.3 | 0.01 | 0.08 | 10.7 | 122 | 21.5 | 49.2 |
| TRDD014 | 291.6 | 292 | 0.4 | 0.003 | 0.06 | 10.8 | 82 | 3.8 | 30.9 |
| TRDD014 | 292 | 292.5 | 0.5 | 2.36 | 15.15 | 2020 | 9200 | 932 | 439 |
| TRDD014 | 292.5 | 293.1 | 0.6 | 0.026 | 0.29 | 23.6 | 163 | 40.6 | 19.1 |
| TRDD014 | 293.1 | 293.4 | 0.3 | 1.09 | 9.37 | 807 | 802 | 839 | 36.1 |
| TRDD014 | 311.9 | 312.4 | 0.5 | 0.087 | 5.44 | 52.9 | 154 | 2150 | 80.3 |
| TRDD014 | 314 | 314.5 | 0.5 | 0.058 | 1.22 | 73.8 | 746 | 55.1 | 86.2 |