

## **ADDITIONAL RIGS MOBILISED TO ACCELERATE RESOURCE GROWTH AND STEP-OUT DRILLING AT APOLLO HILL**

Saturn has contracted additional Reverse Circulation (RC) drill rigs to the Apollo Hill Gold Project in WA after receiving positive assay results from recent drilling, which:

- Reinforce the potential of the higher-grade Iris Trend to the north with the key ore-hosting structure extended over an additional 900 metres of strike; and
- Demonstrate additional potential to extend the 2.24Moz Apollo Hill Mineral Resource<sup>1</sup>.

---

### **HIGHLIGHTS**

Significant results from recent drilling include:

#### ***Iris Trend – Northern Extensions***

- **3m @ 3.87g/t Au** from 105m including **1m @ 8.87g/t Au** from 105m – AHRC1340
- **4m @ 1.06g/t Au** from 13m within **18m @ 0.46g/t Au** from 8m – AHRC1337
- **13m @ 0.73g/t Au** from 81m – AHRC1349

#### ***Apollo Hill Main Resource (2.24Moz) – Resource In-Fill***

- **8m @ 2.02g/t Au** from 168m within **23m @ 0.76g/t Au** from 153m – AHRC1326
- **17m @ 1.38g/t Au** from 300m within **44m @ 0.67g/t Au** from 277m – AHRC1328
- **15m @ 1.15g/t Au** from 167m within **29m @ 0.74g/t Au** from 153m – AHRC1336
- **121m @ 0.58g/t Au from surface** (0m) including **9m @ 1.82g/t Au** from 95m – AHRC1344
- **10m @ 1.45g/t Au** from 221m including **3m @ 4.31g/t Au** from 227m – AHRC1330
- **16m @ 1.23g/t Au** from 66m including **2m @ 8.27g/t Au** from 80m – AHRC1316
- **10m @ 1.07g/t Au** from 27m – AHRC1320
- **11m @ 0.75g/t Au** from 510m including **1m @ 6.91g/t Au** from 510m – AHDD0069 (Step-Out – Extensional Diamond Drilling)

---

<sup>1</sup> Complete details of the Mineral Resource (137.1Mt @ 0.51g/t Au for 2,239,000oz Au) and the associated Competent Persons Statement were published in the ASX Announcement dated 18 July 2025 titled "Apollo Hill Gold Resource Increases to 2.24Moz; 82% Classified as Measure and Indicated". Saturn reports that it is not aware of any new information or data that materially affects the information included in that Mineral Resource announcement and that all material assumptions and technical parameters underpinning the estimates in the relevant market announcement continue to apply and there have been no adverse material changes.

For personal use only

Saturn Metals Limited (ASX: STN) (“**Saturn**” or “**the Company**”) is pleased to advise that it has mobilised additional Reverse Circulation drill rigs to accelerate the next phase of resource growth and step-out drilling at its 100%-owned **Apollo Hill Gold Deposit** near Leonora in Western Australia.

This follows the receipt of positive assay results from a combination of recent step-out and in-fill RC and diamond drilling.

This announcement reports the results of step-out drilling to test northern extensions of the structure which hosts the higher-grade mineralisation discovered recently at the Iris Prospect, as well as in-fill drilling within the Apollo Hill Mineral Resource (MRE) aimed at converting additional Inferred Resources to the higher confidence Indicated category for the next MRE upgrade, scheduled for early CY2026, intended to inform the definitive feasibility study anticipated for later CY2026.

**Saturn’s Managing Director Ian Bamborough said:**

*“The assay results and geology intersected in first-pass drilling along trend to the north of Iris warrant immediate follow-up drilling. With this program, we are targeting more shallow, higher-grade Iris-style mineralisation on the edge of the current MRE pit with the potential to positively impact Saturn’s development plans and the upcoming Definitive Feasibility Study for Apollo Hill.*

*“Meanwhile, in-fill drilling continues to reinforce the at-surface bulk mining potential of Apollo Hill and step-out drilling has significantly extended the gold system down-dip. With additional rigs now on site and booked, we look forward to delivering further news-flow and results in the coming months”.*

**Iris Trend Extensions**

The Company recently completed a first-pass, wide-spaced RC drilling program to the north of the Iris and Ra Prospects on the Apollo Hill Footwall Structure (the Iris Trend).

The program has so far comprised 24 holes totalling 3,876 metres, initially at a broad 120m drill section spacing to test for the continuity of the Footwall Structure which hosts the higher-grade mineralisation at Iris.

This step-out program has been successful, with assay results (Appendix 1) further delineating the Iris opportunity over an additional 900 metres of strike length (Figure 1). Hole details are listed in Appendix 2.

Notable intersections include 3m @ 3.87g/t Au from 105m including 1m @ 8.87g/t Au from 105m in drill-hole AHRC1340, which is shown in cross-section in (Figure 2). Figure 3 shows hole locations and results in plan view. Plate 1 (page 5) shows RC drill chips from this zone exhibiting quartz veining, mineral alteration and shearing in dolerite – the same geological setting as the recently delineated higher grade Iris zone.

The mineralisation remains open along strike and at depth.

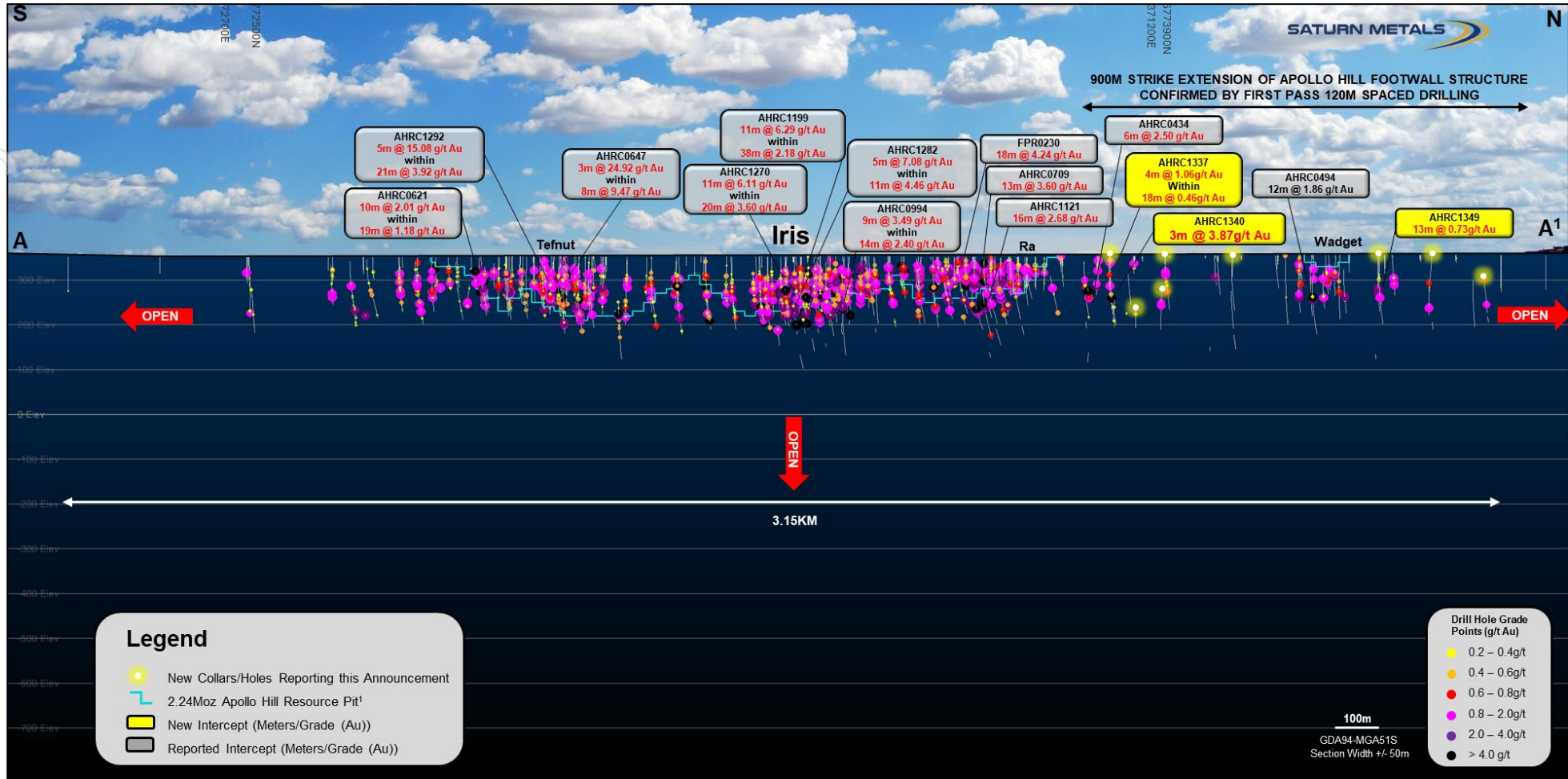


Figure 1 – Long Section (+/-50m) of the Apollo Hill Footwall Structure, looking west, illustrating the Iris, Ra, Tefnut and Wadget Lodes. Location of 3.15km long section (A-A<sup>1</sup>) illustrated on plan overview diagram (Figure 3). Drill hole grade (Au g/t) points are sized in accordance with their grade; larger point size equals higher grade. Holes being reported in this announcement have their collars represented by white circles with a yellow glow.

AHRC1340 RC Chip Tray (102 – 114m) – Alteration Zone 104m - 113m

102 – 103m	103 – 104m	104 – 105m	105 – 106m	106 – 107m	107 – 108m	108 – 109m	109 – 110m	110 – 111m	111 – 112m	112 – 113m	113 – 114m
<0.01g/t Au	<0.01g/t Au	0.04g/t Au	<b>3m @ 3.87g/t Au</b>			<0.01g/t Au	0.07g/t Au	0.10g/t Au	0.21g/t Au	0.10g/t Au	<0.01g/t Au

Increased Alteration, Shearing & Veining within Modelled Structural Target Zone

Plate 1 – AHAC1340 RC chip tray images demonstrating alteration, shearing and veining, with a 3-metre intercept at 3.87g/t Au, along with individual metre grades in g/t Au.

Additional RC drill rigs have been mobilised to site to accelerate in-fill and down-plunge drilling along the Iris Trend (Plate 2).



Plate 2 – Newly arrived RC Drill Rig at Apollo Hill 17 November 2025

For personal use only

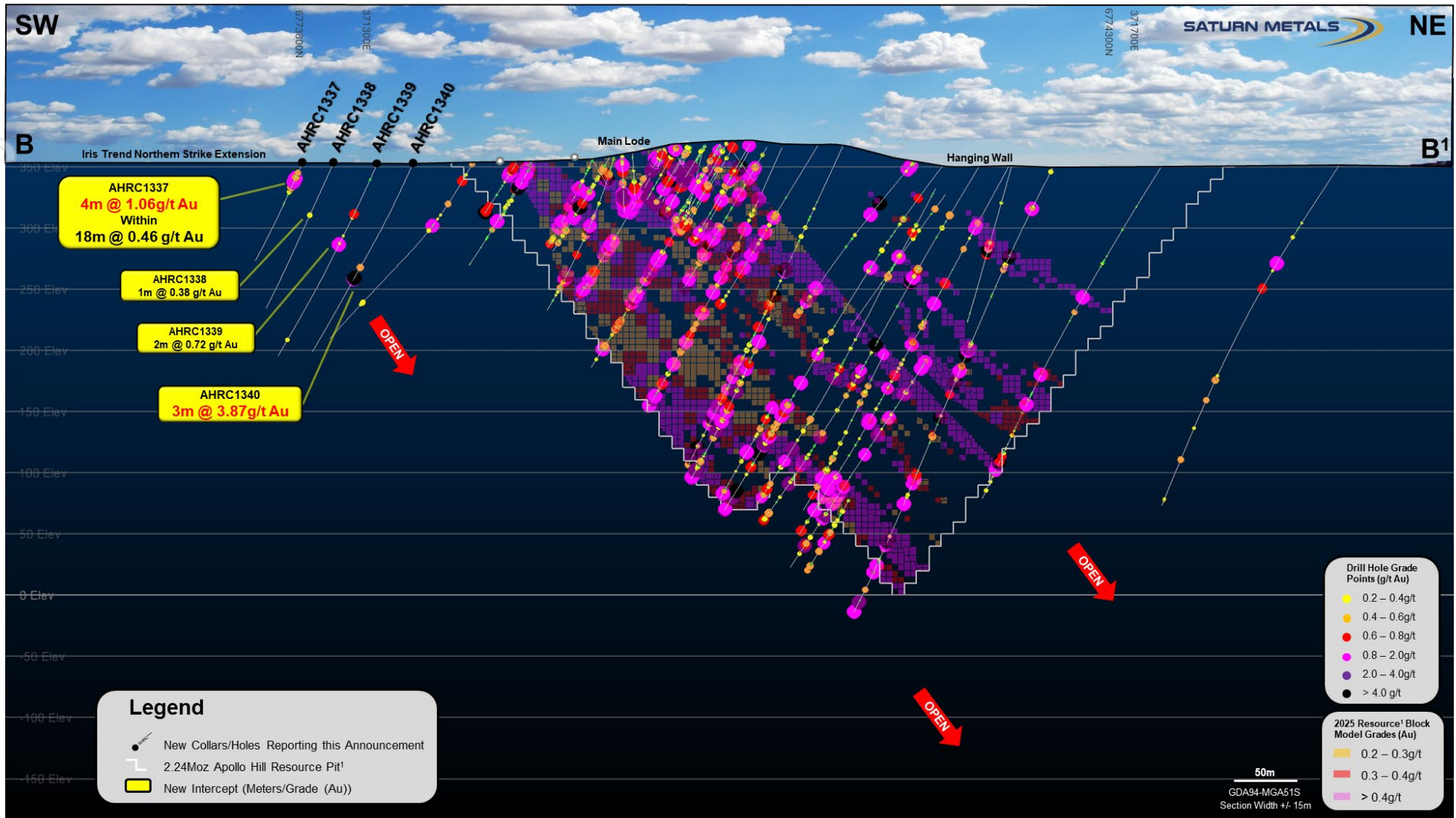


Figure 2 – Cross-Section (+/-15m) showing recent wide-spaced results along the Apollo Hill Footwall Structure (Iris Trend); Section location as line B-B<sup>1</sup> on Figure 3. Drill-hole grade points are sized in accordance with their grade; larger point size equals higher grade.

For personal use only

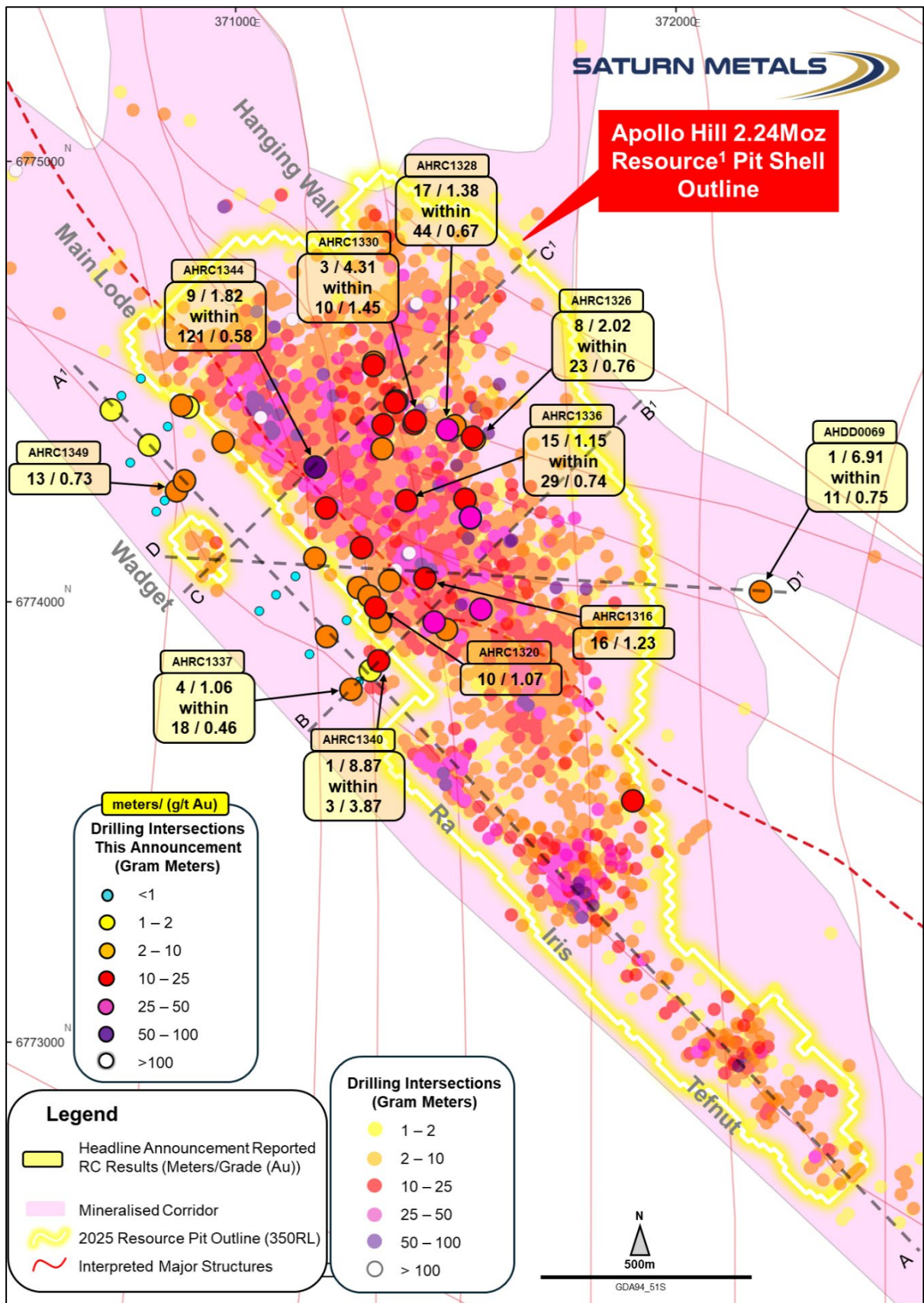


Figure 3 – Plan Overview, Apollo Hill RC & Diamond Holes. Previously reported holes >1 Gram Metre (g/t Au x Metres) with all RC & Diamond holes reported in this announcement illustrated. July 2025 Apollo Hill Mineral Resource<sup>1</sup> Pit Shell Outline seen at 350RL (Average Surface RL); Figure 1 Long Section illustrated as line A-A<sup>1</sup> on this diagram. Figure 2 Cross-Section illustrated as line B-B<sup>1</sup> on this diagram. Figure 4 Cross-Section illustrated as line C-C<sup>1</sup> on this diagram. Figure 5 Cross-Section illustrated as line D-D<sup>1</sup> on this diagram.

## In-fill Resource Drilling

In-fill drilling results such as 121m @ 0.58g/t Au from surface (0m) in hole AHRC1344 highlight the at-surface bulk mining potential of the Apollo Hill Deposit (Figure 4 cross-section).

All results from this phase of drilling (27 holes for 6,620m) are listed in Appendix 1. Appendix 2 lists hole details. Figure 3 highlights in-fill resource drill results in plan view.

Resource category upgrade drilling continues with an additional 11 holes for 2,800m planned in CY2025. Recent results, and results from ongoing drilling will be utilised in Saturn's next Mineral Resource update, scheduled for early CY2026.

## Step-Out Drilling

This announcement also includes assay results from step-out diamond drilling targeting a further down-dip extension of the Apollo Hill gold system. Drilling intersected Apollo Hill style veining and mineral alteration with anomalous gold mineralisation over a 200m down-hole intercept, effectively extending the gold system 250m down-dip from previous drilling (Figure 5 cross-section). Figure 3 shows hole locations and results in plan view.

More substantial intersections included 11m @ 0.75g/t Au from 510m, including 1m @ 6.91g/t Au from 510m. At recent gold prices, the Mineral Resource is relatively drill constrained, and a small program of additional step-out diamond drill holes is planned. This drilling should deliver a view of the future potential of Apollo Hill and provide important information for long-term infrastructure and strategic planning.

Results from this phase of drilling are listed in Appendix 3. Appendix 4 lists hole details.

This announcement has been approved for release by the Saturn Metals Limited Board of Directors.



**IAN BAMBOROUGH**  
Managing Director

---

### *For further information please contact:*

#### **Investors & Corporate:**

Ian Bamborough  
Managing Director  
T: +61 (0)8 6234 1114  
E: [info@saturnmetals.com.au](mailto:info@saturnmetals.com.au)

#### **Media Inquiries:**

Nicholas Read  
Read Corporate  
T: +61 (0)8 9388 1474  
E: [nicholas@readcorporate.com.au](mailto:nicholas@readcorporate.com.au)

---

### **Competent Persons Statement:**

The information in this report that relates to exploration results is based on information compiled and/or reviewed by David Smith, a Competent Person who is a Member of The Australian Institute of Geoscientists. Mr Smith is a full-time employee of the Company, in addition to being a shareholder of the Company. Mr Smith has sufficient experience that is relevant to the style of mineralisation and type of deposit under consideration and to the activity being undertaken to qualify as a Competent Person as defined in the 2012 Edition of the 'Australasian Code for Reporting of Exploration Results, Mineral Resources and Ore Reserves'. Mr Smith consents to the inclusion in the report of the matters based on his information in the form and context in which it appears.

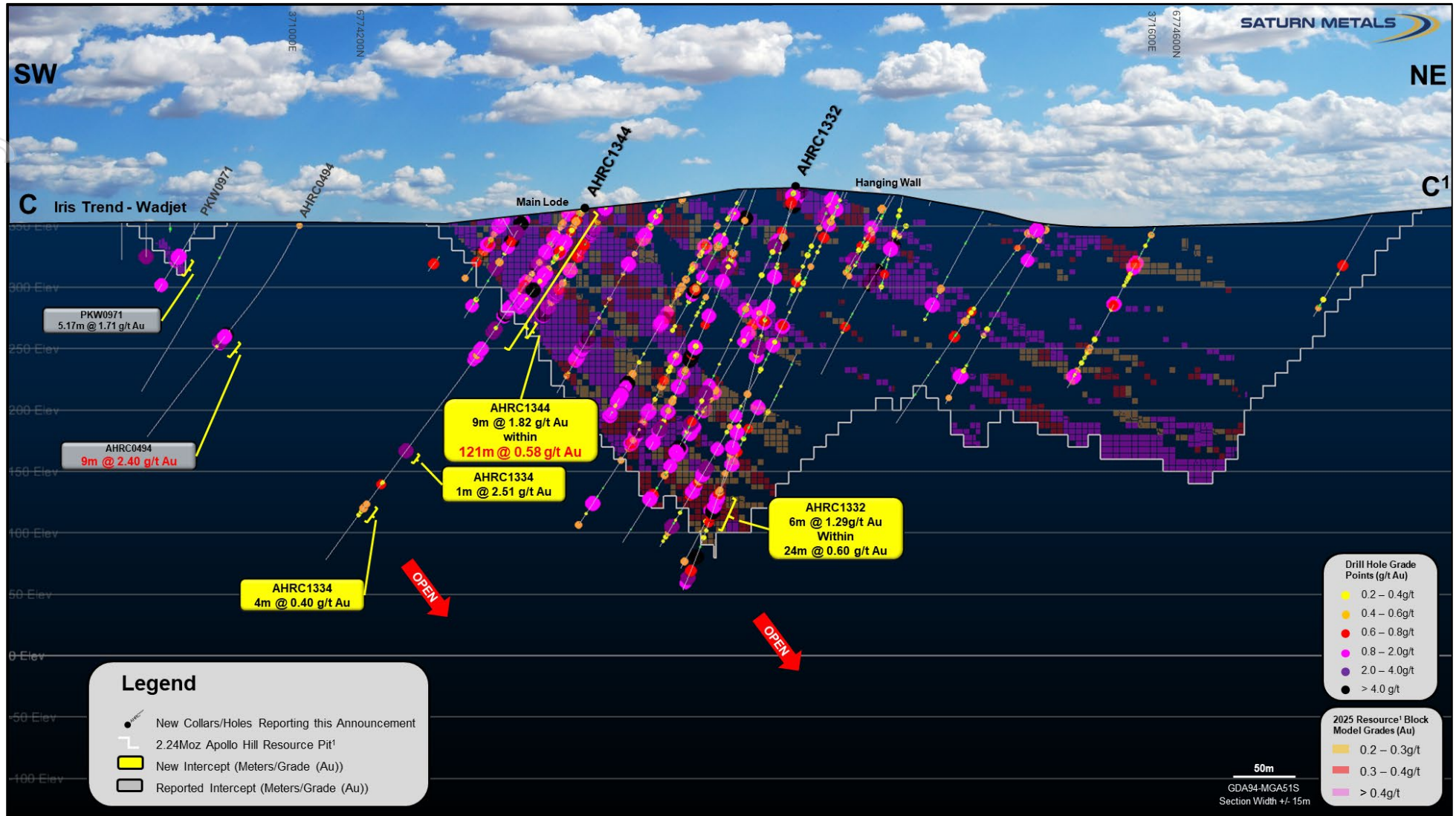


Figure 4 – Cross-Section (+/-15m) showing recent in-fill resource drilling results and deeper step out results on the Iris trend; Section location as line C-C<sup>1</sup> on Figure 3. Drill-hole grade points are sized in accordance with their grade; larger point size equals higher grade.

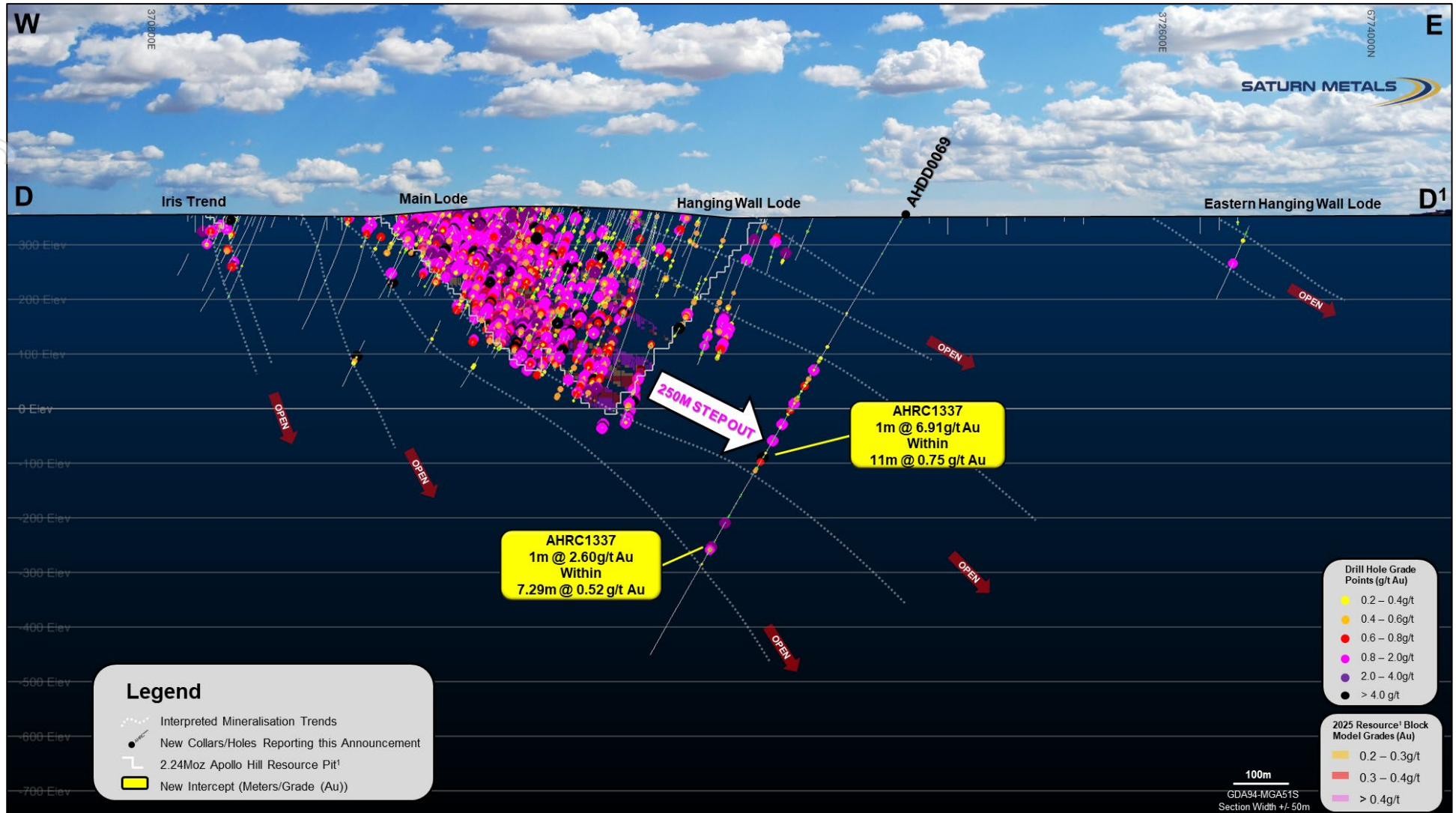


Figure 5 – Cross-Section (+/-50m) showing recent diamond drilling results illustrating a 250m down plunge mineralised step out from 2.24Moz Resource Pit Shell; Section location shown line D-D<sup>1</sup> on Figure 3. Drill-hole grade points are sized in accordance with their grade; larger point size equals higher grade.

## Appendix 1:

### Significant Reverse Circulation Results Reported in this announcement

Hole Number	Down Hole Width (m)	Grade (g/t Au)	From (m)
AHRC1312	<b>21</b>	<b>0.54</b>	<b>31</b>
	5	1.86	40
	17	0.50	246
	4	1.21	259
AHRC1313 incl.	8	0.74	8
	4	1.17	8
	<b>26</b>	<b>0.51</b>	<b>30</b>
	3	0.72	59
	<b>1</b>	<b>17.60</b>	<b>88</b>
	5	1.26	129
AHRC1314 incl. incl.	4	0.49	0
	<b>38</b>	<b>0.37</b>	<b>13</b>
	<b>22</b>	<b>0.48</b>	<b>29</b>
	1	4.25	50
AHRC1315 incl. incl. incl.	<b>103</b>	<b>0.30</b>	<b>1</b>
	10	0.67	33
	13	0.46	72
	7	0.70	97
AHRC1316 incl. incl. incl. incl.	<b>24</b>	<b>0.50</b>	<b>15</b>
	2	2.01	37
	7	0.82	48
	<b>16</b>	<b>1.23</b>	<b>66</b>
	<b>2</b>	<b>8.27</b>	<b>80</b>
	5	0.36	92
	7	0.38	114
AHRC1317	6	0.32	4
	4	0.57	28
AHRC1318	8	0.39	2
	9	0.51	14
	3	2.14	49
	2	0.98	72
AHRC1319 incl. incl.	22	0.25	1
	2	0.95	1
	3	0.55	18
AHRC1320	8	0.24	1
	<b>10</b>	<b>1.07</b>	<b>27</b>

Hole Number	Down Hole Width (m)	Grade (g/t Au)	From (m)
AHRC1321	11	0.34	9
	5	0.98	29
	4	0.78	48
AHRC1322	7	0.43	30
	<b>66</b>	<b>0.55</b>	<b>80</b>
	incl. <b>13</b>	<b>0.88</b>	<b>101</b>
	1	1.92	225
	3	2.59	271
AHRC1323	12	0.29	7
	10	0.50	88
AHRC1324	1	1.20	79
	<b>28</b>	<b>0.54</b>	<b>133</b>
	incl. 6	1.19	155
	<b>44</b>	<b>0.25</b>	<b>176</b>
	incl. 4	0.88	205
AHRC1326	1	1.50	55
	1	1.66	88
	<b>23</b>	<b>0.76</b>	<b>153</b>
	incl. <b>8</b>	<b>2.02</b>	<b>168</b>
AHRC1327	5	0.26	3
	6	1.36	94
	4	0.31	126
AHRC1328	27	0.35	119
	incl. 13	0.54	123
	<b>18</b>	<b>0.90</b>	<b>231</b>
	incl. <b>3</b>	<b>4.77</b>	<b>246</b>
	<b>44</b>	<b>0.67</b>	<b>277</b>
	incl. <b>17</b>	<b>1.38</b>	<b>300</b>
	<b>1</b>	<b>13.00</b>	<b>337</b>
AHRC1329	1	1.53	23
	3	0.67	169
	1	3.23	284
	21	0.41	310
	1	3.52	367
	6	0.73	400

Hole Number	Down Hole Width (m)	Grade (g/t Au)	From (m)
AHRC1330	6	0.31	10
	4	0.95	34
	6	0.76	185
incl.	<b>10</b>	<b>1.45</b>	<b>221</b>
	<b>3</b>	<b>4.31</b>	<b>227</b>
	7	0.48	307
AHRC1331	<b>3</b>	<b>3.60</b>	<b>104</b>
	3	0.91	140
incl.	<b>4</b>	<b>2.57</b>	<b>195</b>
	<b>1</b>	<b>9.03</b>	<b>197</b>
	<b>42</b>	<b>0.50</b>	<b>274</b>
incl.	<b>21</b>	<b>0.81</b>	<b>290</b>
AHRC1332	15	0.31	3
	6	0.87	45
incl.	<b>1</b>	<b>4.10</b>	<b>50</b>
	5	0.64	114
	1	2.70	137
incl.	4	0.73	208
	13	0.60	211
	<b>24</b>	<b>0.60</b>	<b>257</b>
	5	1.29	276
	<b>1</b>	<b>4.14</b>	<b>315</b>
	1	3.04	333
	1	3.04	333
AHRC1333	<b>37</b>	<b>0.41</b>	<b>5</b>
incl.	<b>10</b>	<b>1.05</b>	<b>27</b>
	8	0.92	94
AHRC1334	<b>14</b>	<b>0.81</b>	<b>22</b>
	5	1.55	25
incl.	7	0.92	56
	2	2.16	243
	6	0.69	378
AHRC1335	13	0.34	10
	6	0.36	52
	6	0.35	92

Hole Number	Down Hole Width (m)	Grade (g/t Au)	From (m)
AHRC1336	9	0.45	32
	<b>26</b>	<b>0.56</b>	<b>56</b>
incl.	<b>9</b>	<b>1.06</b>	<b>71</b>
incl.	6	0.94	122
	3	1.42	144
	<b>29</b>	<b>0.74</b>	<b>153</b>
	<b>15</b>	<b>1.15</b>	<b>167</b>
AHRC1337	18	0.46	8
incl.	4	1.06	13
AHRC1338	1	0.38	46
AHRC1339	4	0.29	45
	2	0.72	72
AHRC1340	<b>3</b>	<b>3.87</b>	<b>105</b>
	<b>1</b>	<b>8.87</b>	<b>105</b>
AHRC1341	1	0.25	28
AHRC1342	12	0.42	39
	1	0.72	90
AHRC1343	1	0.86	122
	1	0.98	129
AHRC1344 incl.	<b>121</b>	<b>0.58</b>	<b>0</b>
	<b>9</b>	<b>1.82</b>	<b>95</b>
	1	1.23	136
	2	1.03	142
	1	0.80	147
	1	2.51	239
	4	0.40	271
AHRC1345	12	0.49	3
AHRC1346	16	0.26	0
	20	0.33	117
	2	2.43	150
	4	1.03	162
	6	0.85	269
	<b>9</b>	<b>1.20</b>	<b>283</b>
	17	0.29	304
AHRC1347		NSI	

Hole Number	Down Hole Width (m)	Grade (g/t Au)	From (m)
AHRC1348	4	0.21	57
AHRC1349	13	0.73	81
AHRC1350	6	0.59	105
AHRC1351	1	0.60	5
	1	0.58	143
	3	1.05	156
AHRC1352	4	0.35	4
	7	0.60	36
	3	0.56	205
AHRC1353		NSI	
AHRC1354	1	0.68	67
	3	0.60	128
AHRC1355	1	0.22	79
	1	0.42	168
AHRC1356	1	1.75	29
	2	0.74	56
AHRC1357	1	1.13	47
	1	0.67	59
	1	0.85	119
AHRC1358	1	0.21	49
	1	0.69	148
AHRC1359	1	0.22	90
	1	0.28	194
AHRC1360		NSI	
AHRC1361		NSI	
AHRC1362		NSI	
AHRC1363	4	0.55	6

All results reported as interpreted for a bulk mining style heap leach operation – See STN announcement ‘Apollo Hill Preliminary Economic Assessment’ – August 17<sup>th</sup>, 2023, for further details.

## Appendix 2:

### Completed and Reported Reverse Circulation Holes

Hole Number	Easting GDA94-Z51	Northing GDA94-Z51	RL (m)	Dip°	Azi°	Depth (m)	Location
AHRC1312	371902	6773548	350	-65	220	286	Resource
AHRC1313	371286	6774123	360	-85	225	163	Resource
AHRC1314	371206	6774213	360	-59	220	300	Resource
AHRC1315	371451	6773954	356	-70	225	190	Resource
AHRC1316	371430	6774053	360	-63	223	177	Resource
AHRC1317	371279	6774032	355	-55	224	85	Resource
AHRC1318	371303	6774013	354	-55	225	87	Resource
AHRC1319	371329	6773955	354	-55	225	202	Resource
AHRC1320	371318	6773987	354	-55	225	85	Resource
AHRC1321	371350	6774048	357	-57	225	140	Resource
AHRC1322	371557	6773983	359	-56	235	360	Resource
AHRC1323	371479	6773937	363	-53	225	294	Resource
AHRC1324	371521	6774233	353	-59	222	230	Resource
AHRC1326	371538	6774374	354	-61	222	274	Resource
AHRC1327	371498	6774400	353	-58	235	132	Resource
AHRC1328	371481	6774391	353	-58	235	365	Resource
AHRC1329	371542	6774369	345	-61	225	407	Resource
AHRC1330	371405	6774405	369	-67	220	347	Resource
AHRC1331	371408	6774411	369	-72	220	353	Resource
AHRC1332	371335	6774402	383	-78	222	345	Resource
AHRC1333	371366	6774456	384	-68	222	215	Resource
AHRC1334	371362	6774453	384	-75	222	393	Resource
AHRC1335	371333	6774348	378	-90	0	150	Resource
AHRC1336	371388	6774230	362	-55	233	241	Resource
AHRC1337	371262	6773801	352	-65	222	89	Iris Trend
AHRC1338	371280	6773819	351	-65	221	131	Iris Trend
AHRC1339	371306	6773844	351	-65	219	178	Iris Trend
AHRC1340	371325	6773866	351	-65	218	176	Iris Trend
AHRC1341	371168	6773881	352	-65	222	75	Iris Trend
AHRC1342	371207	6773921	351	-65	220	135	Iris Trend
AHRC1343	371252	6773958	350	-65	218	200	Iris Trend
AHRC1344	371181	6774306	364	-59	220	350	Resource
AHRC1345	371314	6774544	368	-58	220	127	Resource
AHRC1346	371313	6774537	368	-58	220	322	Resource
AHRC1347	370820	6774205	352	-65	222	79	Iris Trend
AHRC1348	370839	6774230	351	-65	220	124	Iris Trend
AHRC1349	370866	6774252	351	-65	219	142	Iris Trend
AHRC1350	370884	6774275	350	-65	218	178	Iris Trend

Hole Number	Easting GDA94-Z51	Northing GDA94-Z51	RL (m)	Dip°	Azi°	Depth (m)	Location
AHRC1351	370877	6774446	351	-65	218	226	Iris Trend
AHRC1352	370972	6774363	351	-65	216	280	Iris Trend
AHRC1353	370761	6774316	352	-65	222	112	Iris Trend
AHRC1354	370804	6774356	351	-65	220	148	Iris Trend
AHRC1355	370846	6774398	351	-65	218	190	Iris Trend
AHRC1356	370892	6774442	352	-65	218	244	Iris Trend
AHRC1357	370718	6774436	351	-65	220	140	Iris Trend
AHRC1358	370741	6774468	352	-65	218	166	Iris Trend
AHRC1359	370785	6774507	352	-65	218	220	Iris Trend
AHRC1360	371054	6773979	352	-65	222	88	Iris Trend
AHRC1361	371092	6774016	351	-65	220	135	Iris Trend
AHRC1362	371136	6774058	354	-65	218	180	Iris Trend
AHRC1363	371180	6774099	354	-65	217	240	Iris Trend

### Appendix 3:

#### Significant Diamond Drilling Results Reported in this announcement

Hole Number	Down Hole Width (m)	Grade (g/t Au)	From (m)
AHDD0069	0.91	0.76	325
	1.72	0.41	358
	15	0.24	396
	4	0.48	440
	0.99	1.12	475
	<b>11</b>	<b>0.75</b>	<b>510</b>
	<b>1</b>	<b>6.91</b>	<b>510</b>
	0.87	2.00	649
	7.29	0.52	700
	incl.	1	2.60

All results reported as interpreted for a bulk mining style heap leach operation – See STN announcement ‘Apollo Hill Preliminary Economic Assessment’ – August 17<sup>th</sup>, 2023, for further details.

### Appendix 4:

#### Completed and Reported Diamond Drilling Holes

Hole Number	Easting GDA94-Z51	Northing GDA94-Z51	RL (m)	Dip°	Azi°	Depth (m)
AHDD0069	372192	6774023	350	-60	275	930.3

## Appendix 5:

### Saturn Metals Mineral Resources

Mineral Resource Classification	Oxidation	Tonnes (Mt)	Au (g/t)	Au metal (Kozs)
Measured	Oxide	0.04	0.70	1
	Transitional	1.3	0.57	24
	Fresh	3.5	0.52	59
<b>Subtotal</b>		<b>4.8</b>	<b>0.54</b>	<b>83</b>
Indicated	Oxide	0.7	0.51	11
	Transitional	7.1	0.50	113
	Fresh	99.7	0.51	1629
<b>Subtotal</b>		<b>107.4</b>	<b>0.51</b>	<b>1,753</b>
Inferred	Oxide	0.1	0.50	1
	Transitional	0.9	0.49	15
	Fresh	23.8	0.51	387
<b>Subtotal</b>		<b>24.8</b>	<b>0.51</b>	<b>403</b>
<b>Grand Total</b>		<b>137.1</b>	<b>0.51</b>	<b>2,239</b>

Complete details of the Mineral Resource (137.1Mt @ 0.51g/t Au for 2,239,000oz Au) and the associated Competent Persons Statement were published in the ASX Announcement dated 18 July 2025 titled "Apollo Hill Gold Resource Increases to 2.24Moz; 82% Classified as Measure and Indicated". Saturn reports that it is not aware of any new information or data that materially affects the information included in that Mineral Resource announcement and that all material assumptions and technical parameters underpinning the estimates in the relevant market announcement continue to apply and there have been no adverse material changes

## Appendix 6:

### Saturn Metals Project Areas

Apollo Hill (29.15°S and 121.68°E) is located approximately 60km south-east of Leonora in the heart of WA's goldfields region (Figure 6). The deposit and the Apollo Hill project are 100% owned by Saturn and are surrounded by good infrastructure and several significant gold deposits. The Apollo Hill Project has the potential to become a large tonnage, simple metallurgy, low strip open pit mining operation.

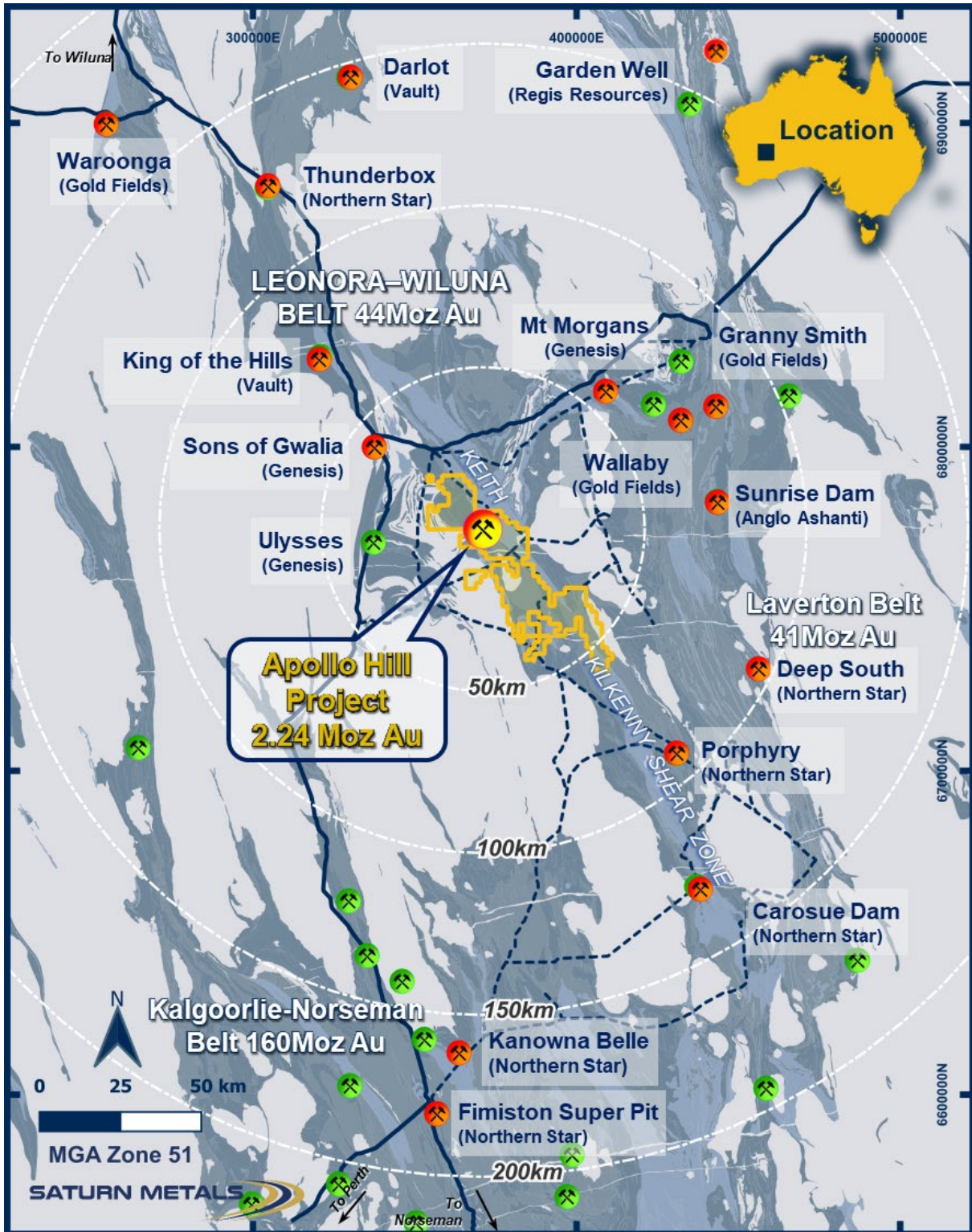


Figure 6 – Apollo Hill location, Saturn Metals' tenements and surrounding gold deposits, gold endowment and infrastructure.

In addition, Saturn has a second quality gold exploration project in Australia. The Company has an option to earn an 85% joint venture interest in the West Wyalong Project (Figure 7), which represents a high-grade vein opportunity on the highly gold prospective Gilmore suture within the famous Lachlan Fold belt of NSW.

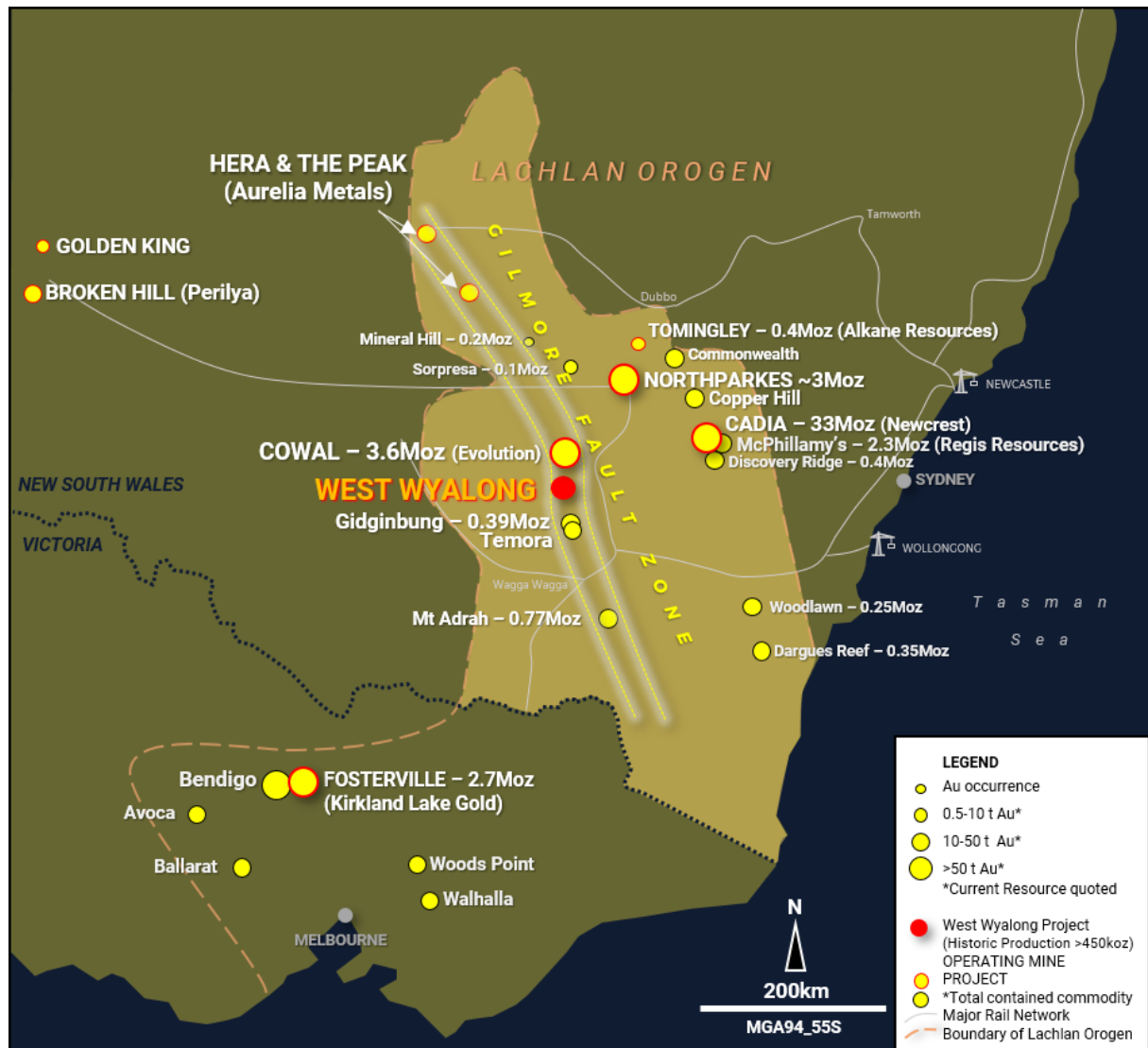


Figure 7 – Regional setting and location of the West Wyalong Gold Project in relation to other gold projects in New South Wales and Victoria (map taken from Saturn ASX announcement on 28 April 2020 where full references are provided).

## Appendix 7:

### JORC Code, 2012 Edition – Table 1 – Apollo Hill Exploration Area

#### Section 1 Sampling Techniques and Data

(Criteria in this section apply to the Apollo Hill, Apollo Hill Regional, Apollo Hill Hanging-wall and Ra and Tefnut exploration areas all succeeding sections).

Table II Extract of JORC Code 2012 Table 1

Criteria	JORC Code Explanation	Commentary
<b>Sampling techniques</b>	<p>Nature and quality of sampling (e.g. cut channels, random chips, or specific specialised industry standard measurement tools appropriate to the minerals under investigation, such as down hole gamma sondes, or handheld XRF instruments, etc.). These examples should not be taken as limiting the broad meaning of sampling.</p> <p>Include reference to measures taken to ensure sample representivity and the appropriate calibration of any measurement tools or systems used.</p> <p>Aspects of the determination of mineralisation that are Material to the Public Report.</p> <p>In cases where 'industry standard' work has been done this would be relatively simple (e.g. 'reverse circulation drilling was used to obtain 1m samples from which 3 kg was pulverised to produce a 30 g charge for fire assay'). In other cases more explanation may be required, such as where there is coarse gold that has inherent sampling problems. Unusual commodities or mineralisation types (e.g. submarine nodules) may warrant disclosure of detailed information.</p>	<p>Measures taken to ensure the representivity of RC sampling include close supervision by geologists, use of appropriate sub-sampling methods, routine cleaning of splitters and cyclones, and RC rigs with sufficient capacity to provide generally dry, reasonable recovery samples. Information available to demonstrate sample representivity includes RC sample weights, sample recovery, sample consistency, field duplicates, standards and blanks.</p> <p>RC holes were sampled over 1 m intervals using a cone-splitter mounted to the RC drill rig. RC samples were analysed by Bureau Veritas in Kalgoorlie. At the laboratory the samples were oven dried and crushed to 90% passing 2 mm, and pulverized to 95% passing 106 microns, with analysis by a 40 g or 50 g fire assay.</p> <p>RC samples were generally taken at 1m intervals. Historically some samples were composited to 4 m to produce a 3 kg representative sample to be submitted to the laboratory. If the 4 m composite sample was anomalous (Au&gt;0.16 g/t), the original 1 m samples were retrieved and submitted to the laboratory. In general, the expected mineralised zones are all sampled using 1 m intervals.</p> <p>Diamond core was drilled HQ3 and NQ2 dependent on weathering profile and ground conditions. The core was cut in half using a Corewise diamond saw at the ALS laboratory in Perth, an Almonte diamond saw at Petricore in Kalgoorlie and an Almonte diamond saw at Mavex in Kalgoorlie. Both half and full core were submitted for analysis.</p> <p>Half and full core samples were taken with a diamond saw, generally on 1 m intervals, dependent on geological boundaries where appropriate (lengths ranging from a minimum 0.3 m to a maximum of 1.2 m). Whole core samples were historically taken within the zones of mineralisation to account for coarse grained nature of the gold.</p> <p>Sampling was undertaken using STN sampling and QAQC procedures in line with industry best practice, which includes the submission of standards, blanks and duplicates at regular intervals within each submission, for RC and Diamond samples.</p> <p>All samples collected are recorded in the Company's Database.</p>
<b>Drilling techniques</b>	<p>Drill type (e.g. core, reverse circulation, open-hole hammer, rotary air blast, auger, Bangka, sonic, etc.) and details (e.g. core diameter, triple or standard tube, depth of diamond tails, face-sampling bit or other type, whether core is oriented and if so, by what method, etc.).</p>	<p>RC drilling used 5.5-inch face-sampling bit.</p> <p>Diamond core was HQ3 or NQ2 diameter core</p> <p>All RC holes were surveyed by Gyro, every 30 m down hole.</p> <p>All Diamond holes were surveyed by Gyro, every 15-30m down hole.</p> <p>All core was orientated used a Reflex orientation tool, which was recorded at the drill site, and all core pieced back together and orientated at the STN core yard at Apollo Hill.</p>
<b>Drill sample recovery</b>	<p>Method of recording and assessing core and chip sample recoveries and results assessed.</p> <p>Measures taken to maximise sample recovery and ensure representative nature of the samples.</p>	<p>RC sample recovery was visually estimated by volume for each 1 m bulk sample bag and recorded digitally in the sample database. Very little variation was observed.</p>

Criteria	JORC Code Explanation	Commentary
	<p>Whether a relationship exists between sample recovery and grade and whether sample bias may have occurred due to preferential loss/gain of fine/coarse material.</p>	<p>Measures taken to maximize recovery for RC drilling included use of face sampling bits and drilling rigs of sufficient capacity to provide generally dry, high recovery samples.</p> <p>RC sample weights indicate an average recovery of 85% to 95% and were dry.</p> <p>The cone splitter was regularly cleaned with compressed air at the completion of each rod.</p> <p>The RC Drilling was completed using auxiliary compressors and boosters to keep the hole dry and ensure the sample was lifted to the sampling equipment as efficiently as possible.</p> <p>The cyclone and cone splitter were kept dry and clean, with the cyclone cleaned after each drillhole, and the splitter cleaned after each rod to minimize down-hole or cross-hole contamination.</p> <p>The 2.5-3 kg calico bag samples representing 1 m were taken directly from the cyclone and packaged for freight to Kalgoorlie. The calico represents both fine and coarse material from the drill rig.</p> <p>Diamond core recovery was measured and recorded for each drill run. The core was physically measured by tape and recorded for each run. Core recovery was recorded as percentage recovered. All data was loaded into the STN database.</p> <p>Diamond drilling utilised drilling additives and muds to ensure the hole was conditioned to maximize recoveries and sample quality.</p> <p>There was no observable relationship between recovery and grade, or preferential bias between hole-types observed at this stage.</p> <p>There was no significant loss of core reported in the mineralised parts of the diamond drillholes to date.</p>
<p><b>Logging</b></p>	<p>Whether core and chip samples have been geologically and geotechnically logged to a level of detail to support appropriate Mineral Resource estimation, mining studies and metallurgical studies.</p> <p>Whether logging is qualitative or quantitative in nature. Core (or costean, channel, etc.) photography.</p> <p>The total length and percentage of the relevant intersections logged.</p>	<p>All holes in the current program have been geologically logged to a high level of detail to support the definition of geological domains appropriate to support Mineral Resource estimation and classification.</p> <p>All geologists logging drilling have been trained how to log to a high level of detail through their university studies as well as by supervising geologists experienced in the geology of the region.</p> <p>Representative rock chips from every metre were collected in chip trays and logged by the geologist at the drill site.</p> <p>Lithology, weathering (oxidation state), veining, mineralisation and alteration are recorded in detail using standard digital logging sheets and defined look-up tables to ensure that all data are collected in a consistent manner. Reference cards aided the logging of sulphides, which along with the experience of logging geologists, ensure sulphide estimates are reliable and reproduceable.</p> <p>Drill core is placed in core trays and logged on site in the core yard facility. In addition, detailed structural and geotechnical logging is also completed on diamond core.</p> <p>All core trays and chip trays are photographed and saved on Saturn's intranet server.</p> <p>Logging data are entered using Toughbook computers. All data are validated by the logging geologist before being entered into an SQL database.</p>
<p><b>Sub-sampling techniques and sample preparation</b></p>	<p>If core, whether cut or sawn and whether quarter, half or all core taken.</p> <p>If non-core, whether riffled, tube sampled, rotary split, etc. and whether sampled wet or dry.</p> <p>For all sample types, the nature, quality and appropriateness of the sample preparation technique.</p>	<p>RC holes were sampled over 1 m intervals by cone-splitting. RC sampling was closely supervised by field geologists and included appropriate sampling methods, routine cleaning of splitters and cyclones, and rigs with sufficient capacity to provide generally dry, high recovery RC samples. Sample quality monitoring included weighing RC samples and field duplicates.</p>

Criteria	JORC Code Explanation	Commentary
	<p>Quality control procedures adopted for all sub-sampling stages to maximise representivity of samples.</p> <p>Measures taken to ensure that the sampling is representative of the in-situ material collected, including for instance results for field duplicate/second-half sampling.</p> <p>Whether sample sizes are appropriate to the grain size of the material being sampled.</p>	<p>Core was cut in half and submitted to the laboratory. Historically, some full core samples have been submitted.</p> <p>Assay samples were crushed to 90% passing 2 mm. A 3kg split sub sample was then pulverised to 85% passing 75 microns using an LM5 pulverising mill, with analysis by 40 g or 50 g fire assay with AAS finish. Assay quality monitoring included reference standards and inter-laboratory checks assays.</p> <p>Duplicate samples were collected every 40 samples, and certified reference material and blank material were inserted every 25 samples.</p> <p>The available data suggests that sampling procedures provide sufficiently representative sub-samples for the current interpretation.</p>
<p><b>Quality of assay data and laboratory tests</b></p>	<p>The nature, quality and appropriateness of the assaying and laboratory procedures used and whether the technique is considered partial or total.</p> <p>For geophysical tools, spectrometres, handheld XRF instruments, etc., the parameters used in determining the analysis including instrument make and model, reading times, calibrations factors applied and their derivation, etc.</p> <p>Nature of quality control procedures adopted (e.g. standards, blanks, duplicates, external laboratory checks) and whether acceptable levels of accuracy (i.e. lack of bias) and precision have been established.</p>	<p>Field quality control procedures adopted comprised of entering a sequence of matrix-matched commercially available certified reference materials (CRMs), and blanks into the sample run at a frequency of approximately 1 in 25 or 1 in 50 samples. Field duplicates were collected at a frequency of approximately 1 in 40 samples.</p> <p>Gold CRMs have been sourced from Geostats Pty Ltd and are used to check accuracy and bias of the analytical method. The certified values have ranged between 0.18 g/t Au and 2.38 g/t Au.</p> <p>Washed quartz sand was utilised as blank material.</p> <p>QAQC samples were monitored on a batch-by-batch basis. An assay batch is accepted if the blank samples and standards are within the + 3SD (standard deviations). One failed standard can cause rejection if the results around the failed standard are not in the normal grade range. A batch is also re-assayed when assay results from two or more standards are outside the acceptable limits. The inserted blank materials did not show any consistent issues with sample contamination.</p> <p>Review of CRMs and blanks suggest that an acceptable level of accuracy (lack of bias) has been established.</p> <p>The performance of field duplicates in RC samples is generally reasonable and the variations are related to the style of mineralisation.</p> <p>Internal laboratory checks are conducted, including insertion of CRMs, blanks and conducting laboratory duplicates. Review of the internal laboratory QAQC checks suggests the laboratory is performing within acceptable limits.</p> <p>Inter-laboratory checks are completed at a rate of 5% of all samples, re-testing the pulps (remains of the pulverised sample) at a different laboratory to the original analysis</p>
<p><b>Verification of sampling and assaying</b></p>	<p>The verification of significant intersections by either independent or alternative company personnel.</p> <p>The use of twinned holes.</p> <p>Documentation of primary data, data entry procedures, data verification, data storage (physical and electronic) protocols.</p> <p>Discuss any adjustment to assay data.</p>	<p>No independent geologists were engaged to verify results. Saturn's geologists were supervised by the company's Exploration Manager, or delegate.</p> <p>High standard QAQC procedures are in place. Therefore, repeatability issues from a QAQC point of view are not considered to be significant.</p> <p>Significant and/or unexpected intersections were reviewed by other company personnel through review of geological logging data, physical examination of remaining samples and review of digital geological interpretations.</p> <p>All assay data were accepted into the database as supplied by the laboratory.</p> <p>Data importation into the database is documented through standard operating procedures and is guided by SQL import validations to prevent incorrect data capture/importation.</p>

Criteria	JORC Code Explanation	Commentary
		<p>Geological, structural and density determination data are directly captured in the database through a validation-controlled interface using Toughbook computers and SQL database import validations.</p> <p>Primary data are stored in their source electronic form. Assay data are retained in both the original certificate (.pdf) form and the excel files received from the laboratory. Data entry, validation and storage are discussed in the section on database integrity below.</p> <p>The database contains several RC and diamond core holes that are sufficiently close to be used to prepare twinned datasets. Twinned data comparisons indicated similar characteristics in terms of grade tenor and intercept thicknesses, with generally no significant issues identified.</p> <p>No adjustments to assay data were undertaken.</p>
<b>Location of data points</b>	<p>Accuracy and quality of surveys used to locate drillholes (collar and down-hole surveys), trenches, mine workings and other locations used in Mineral Resource estimation.</p> <p>Specification of the grid system used.</p> <p>Quality and adequacy of topographic control.</p>	<p>Collars are initially surveyed by hand-held GPS, utilising GDA94, Zone 51.</p> <p>Final drillhole collars are all surveyed by DGPS by an external contractor - Goldfield Surveyor. No adjustments were undertaken of DGPS data.</p> <p>All RC and diamond holes were down-hole surveyed using a gyroscopic survey tool.</p> <p>A topographic triangulation 3D DXF was generated by PhotoSat from 50cm pixel resolution WorldView-2 satellite photos, the survey utilities 925 control points (Surveyed drill hole collar points). The survey projects vertical accuracy is 43 cm RMSE; 72 cm LE90.</p>
<b>Data spacing and distribution</b>	<p>Data spacing for reporting of Exploration Results.</p> <p>Whether the data spacing and distribution is sufficient to establish the degree of geological and grade continuity appropriate for the Mineral Resource and Ore Reserve estimation procedure(s) and classifications applied.</p> <p>Whether sample compositing has been applied.</p>	<p>Apollo Hill mineralisation has been tested by generally 30 m spaced traverses of south- westerly inclined drillholes towards 225°. Across strike spacing is variable. Material within approximately 50 m of surface has been generally tested by 12.5 m to 30 m spaced holes, with deeper drilling ranging from 30 m to greater than 60 m spacing.</p> <p>The data spacing is sufficient to establish geological and grade continuity</p>
<b>Orientation of data in relation to geological structure</b>	<p>Whether the orientation of sampling achieves unbiased sampling of possible structures and the extent to which this is known, considering the deposit type.</p> <p>If the relationship between the drilling orientation and the orientation of key mineralised structures is considered to have introduced a sampling bias, this should be assessed and reported if material.</p>	<p>Mineralised zones dip at an average of around 30° to 60° towards the northeast. Detailed orientations of all short-scale mineralised features have not yet been confidently established. The majority of the drillholes were inclined at around 60° to the southwest.</p> <p>No bias is assumed from the samples due to the orientation of samples.</p>
<b>Sample security</b>	<p>The measures taken to ensure sample security.</p>	<p>Apollo Hill is in an isolated area, with little access to the general public.</p> <p>All drill samples are systematically numbered and placed in pre-printed (numbered) calico bags and placed into numbered polyweave bags that were tied securely with cable ties.</p> <p>Assay samples were stored at a dispatch area and dispatched weekly or bi-weekly. Samples were shipped via a local logistics company directly to laboratories in Kalgoorlie.</p> <p>The sample dispatches were accompanied by supporting sample submission documentation signed by the geologist and showing the sample submission number, analysis suite and number of samples.</p> <p>The chain of custody is maintained by the laboratories once the samples are received from site and a full audit is conducted.</p> <p>Assay results are emailed to the responsible geology administrators in Perth and are loaded into the SQL database by Saturn's database managers. QAQC on import is completed as a batch summary report before the results are finalised.</p>
<b>Audits or reviews</b>	<p>The results of any audits or reviews of sampling techniques and data.</p>	<p>The Competent Person independently reviewed STN sample quality information and database validity.</p>

Criteria	JORC Code Explanation	Commentary
		These reviews included consistency checks within and between database tables and comparison of assay entries with original source records for STN's drilling. These reviews showed no material discrepancies. The Competent Person considers that the Apollo Hill drilling data has been sufficiently verified to provide an adequate basis for the current reporting of exploration results.

## Section 2 Reporting of Exploration Results

(Criteria listed in the preceding section also apply to this section).

Criteria	JORC Code Explanation	Commentary
<b>Mineral tenement and land tenure status</b>	Type, reference name/number, location and ownership including agreements or material issues with third parties such as joint ventures, partnerships, overriding royalties, native title interests, historical sites, wilderness or national park and environmental settings.  The security of the tenure held at the time of reporting along with any known impediments to obtaining a licence to operate in the area.	The Apollo Hill Project lies within Exploration License E39/1198, M31/486 and M39/296. These tenements are wholly owned by Saturn Metals Limited. These tenements, along with certain other tenure, are the subject of a 5% gross over-riding royalty (payable to HHM) on Apollo Hill gold production exceeding 1 Moz. M39/296 is the subject of a \$1/t royalty (payable to a group of parties) on any production.  The tenements are in good standing, and no known impediments exist.
<b>Exploration done by other parties</b>	Acknowledgment and appraisal of exploration by other parties.	RC and diamond drilling by previous tenement holders, At Apollo Hill, provides around 13.5% of the estimation dataset. The data is primarily from RC and diamond drilling by Battle Mountain, Apex Minerals, Fimiston Mining, Hampton Hill, Homestake, MPI and Peel Mining.
<b>Geology</b>	Deposit type, geological setting, and style of mineralisation.	The Apollo Hill project comprises two deposits/trends: the main Apollo Hill deposit comprised of the 'Main lode' and 'Hanging Wall' Lodes in the northwest of the project area, and the Southern Apollo Hill Corridor trend, comprised of the Wadget-Ra-Iris-Tefnut lodes in the south. Gold mineralisation is associated with quartz veins and carbonate-pyrite alteration along a steeply north-east dipping contact between a schist unit to the west, and mafic dominated volcanic and intrusive rocks to the east. The combined mineralised zones extend over a strike length of approximately 3 km and have been intersected by drilling to approximately 500 m vertical depth.  The depth of complete oxidation averages around 4 m with depth to fresh rock averaging around 21 m.
<b>Drillhole Information</b>	A summary of all information material to the understanding of the exploration results including a tabulation of the following information for all Material drillholes: <ul style="list-style-type: none"> <li>• easting and northing of the drillhole collar</li> <li>• elevation or RL (Reduced Level – elevation above sea level in metres) of the drillhole collar</li> <li>• dip and azimuth of the hole.</li> <li>• down hole length and interception depth</li> <li>• hole length.</li> </ul> <p>If the exclusion of this information is justified on the basis that the information is not Material and this exclusion does not detract from the understanding of the report, the Competent Person should clearly explain why this is the case.</p>	Any relevant information material to the understanding of exploration results has been included within the body of the announcement or as appendices.  No information has been excluded.
<b>Data aggregation methods</b>	In reporting Exploration Results, weighting averaging techniques, maximum and/or minimum grade truncations (eg. cutting of high grades) and cut-off grades are usually Material and should be stated.  Where aggregate intercepts incorporate short lengths of high-grade results and longer lengths of low-grade results, the procedure used for such aggregation	For exploration data, no top-cuts have been applied.  All reported AC, RC and diamond drill assay results have been length weighted (arithmetic length weighting).  No metal equivalent values are used for reporting exploration results.

Criteria	JORC Code Explanation	Commentary
	<p>should be stated and some typical examples of such aggregations should be shown in detail.</p> <p>The assumptions used for any reporting of metal equivalent values should be clearly stated.</p>	
<b>Relationship between mineralisation widths and intercept lengths</b>	<p>These relationships are particularly important in the reporting of Exploration Results.</p> <p>If the geometry of the mineralisation with respect to the drillhole angle is known, its nature should be reported.</p> <p>If it is not known and only the down hole lengths are reported, there should be a clear statement to this effect (eg. 'down hole length, true width not known').</p>	<p>All drillhole intercepts are measured in downhole metres, with true widths estimated to be about 60 % of the down-hole width.</p> <p>The orientation of the drilling has the potential to introduce some sampling bias (positive or negative).</p>
<b>Diagrams</b>	<p>Appropriate maps and sections (with scales) and tabulations of intercepts should be included for any significant discovery being reported. These should include, but not be limited to a plan view of drillhole collar locations and appropriate sectional views.</p>	<p>Refer to Figures and Tables within the body of the text.</p>
<b>Balanced reporting</b>	<p>Where comprehensive reporting of all Exploration Results is not practicable, representative reporting of both low and high grades and/or widths should be practiced to avoid misleading reporting of Exploration Results.</p>	<p>For any exploration results, all results are reported, no lower cut-off or top-cuts have been applied.</p>
<b>Other substantive exploration data</b>	<p>Other exploration data, if meaningful and material, should be reported including (but not limited to): geological observations; geophysical survey results; geochemical survey results; bulk samples – size and method of treatment; metallurgical test results; bulk density, groundwater, geotechnical and rock characteristics; potential deleterious or contaminating substances.</p>	<p>At this stage there are no substantive other exploration data from the recent drilling that is meaningful and material to report.</p>
<b>Further work</b>	<p>The nature and scale of planned further work (e.g. tests for lateral extensions or depth extensions or large-scale step-out drilling).</p> <p>Diagrams clearly highlighting the areas of possible extensions, including the main geological interpretations and future drilling areas, provided this information is not commercially sensitive.</p>	<p>Additional RC drilling is scheduled for the remainder of calendar year 2025 to support the development studies of the Apollo Hill Project.</p> <p>In addition, AC drilling will be conducted over areas designated for infrastructure to assess the underlying ground for gold anomalies before placing non-movable infrastructure. This will further support the advancement of the Apollo Hill Project.</p> <p>Further metallurgical diamond drilling is planned to continue as the project develops, along with additional geotechnical diamond drilling to assist in the project's progression.</p>