

BOODANOO GOLD ANOMALY CONFIRMED

HIGHLIGHTS

Boodanoo Project – Gold

- Infill soil sampling has confirmed and further defined the previously identified geochemical anomaly at the Boodanoo Project.
 - This additional sampling has resulted in the definition of two sub parallel, NNE striking anomalies with a peak value of 59.6ppb Au.
 - The +10ppb Au contour of these anomalies are in excess of 650m in strike with widths of up to 190m and are located to the immediate west and east of a small hill of outcropping gabbro.
 - The southern extremity of the soil anomaly is affected by transported cover which can inhibit the effectiveness of the sampling method.
 - No previous drilling has occurred in the area of these anomalies.
 - Next steps are RC drilling once all required permits are in place.
-

Duketon Mining Limited (Company or DKM) is pleased to provide an update on recent activities at the Boodanoo Project. Results have been received from a 150 soil sample program, infilling the historic regolith gold anomaly. The results have confirmed and further defined two parallel gold anomalies, 650m long, with a peak value of 59.6ppb Au.

Sampling was completed over the central portion of the tenement, reducing spacing to 100m x 25m. The new results validate the historic dataset and provide improved definition and continuity of the anomalies, enabling a targeted approach to follow-up drilling. The anomalies are located along the western and eastern flank of a small hill comprising gabbro of the Meeline Suite, part of the Windimurra Igneous Complex (Figure 1 and Figure 3).



**ASX Announcement
26 November 2025**

DKM notes that regolith conditions to the south of the anomalies include a broad alluvial channel, which has reduced the effectiveness of surface geochemical sampling. Sub-surface techniques, such as auger drilling, will be required to adequately test this zone.

Next steps include field verification / validation of results, geological mapping and rock chipping and RC drilling. This work is currently planned to commence in early 2026.

Duketon's Managing Director, Stuart Fogarty, said; *"We are extremely encouraged by the latest soil sampling results received from Boodanoo, which have both confirmed and further defined the previously identified regolith gold anomalies. The improved definition into two parallel gold trends provides a clearer framework for our next phase of activity and strengthens our confidence in the prospectivity of this part of the Project."*

The results to the south of the anomalous area continue to demonstrate geochemical trends that warrant systematic follow-up. Our upcoming field validation, mapping and drill planning activities scheduled to commence as soon as practicable will be critical steps in advancing Boodanoo towards drill testing."

For personal use only

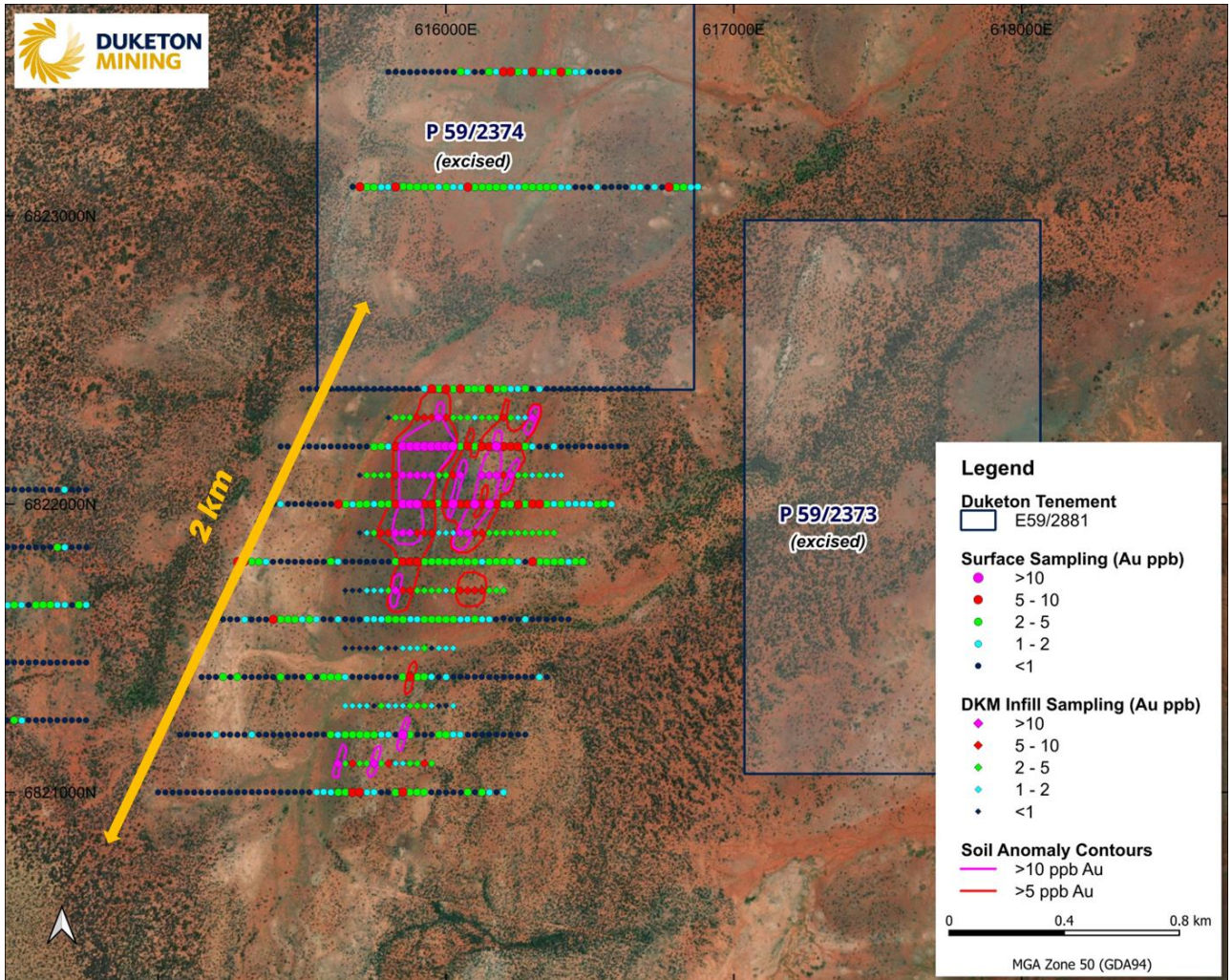


Figure 1: Boodanoo Project soil sample results and interpreted gold anomaly

For personal use only

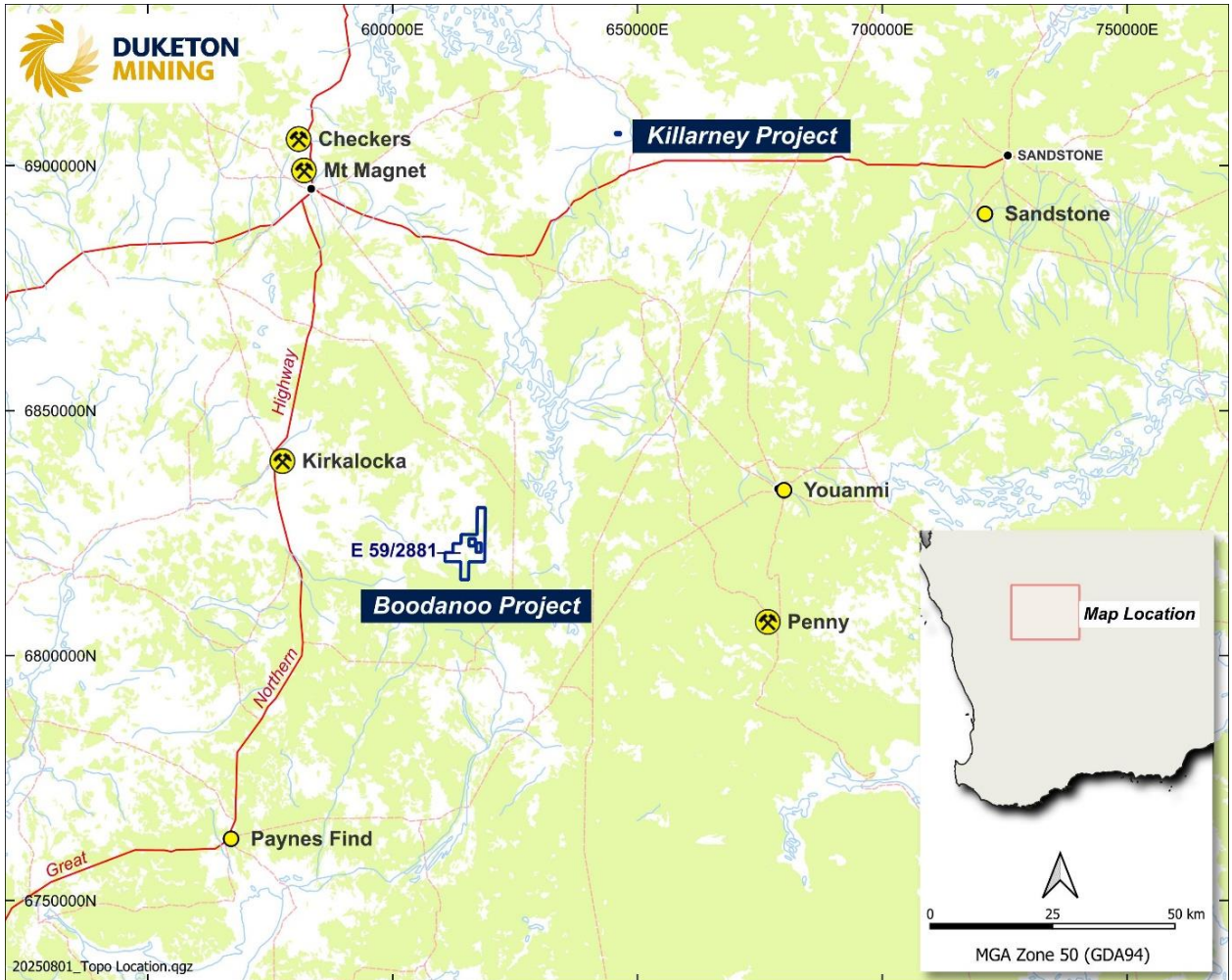


Figure 2: Regional Setting and Location – showing Boddanoo Project, Operating Gold Mines and Killarney Project (DKM)

For personal use only

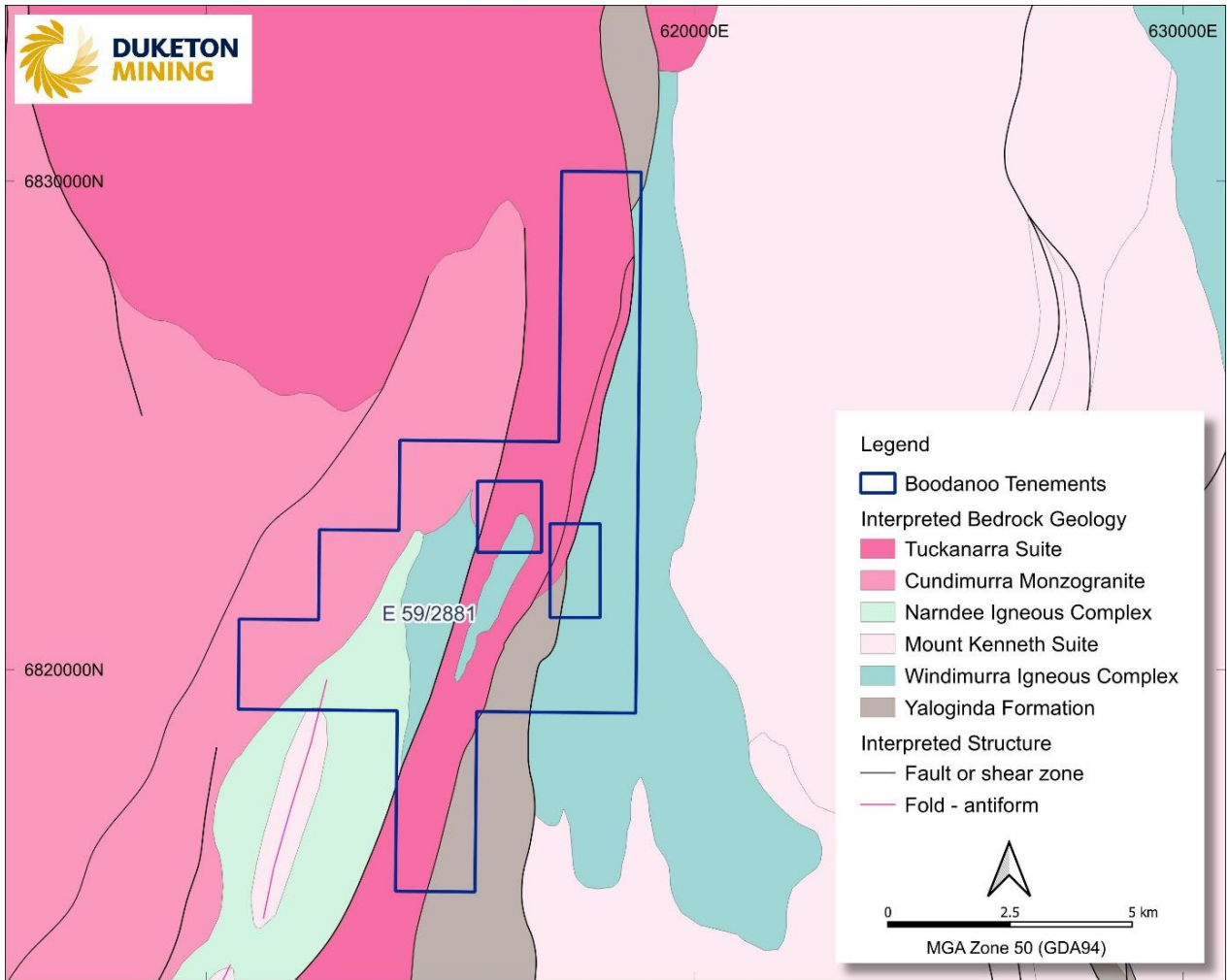


Figure 3: GSWA Regional Interpreted Geology with tenement E 59/2881

For personal use only



**ASX Announcement
26 November 2025**

Boodanoo Project Overview

Location

The Boodanoo Project is located 80km south-south-east of Mount Magnet. Access to the tenement is south via the Great Northern Highway for 32kms, then east and south along the Meeline-Narndee Rd for 76km to reach the abandoned Boodanoo Homestead. The central portion of the tenement can be reached by travelling west for a further 10km along station tracks.

Geology

The tenement is located along the south-western margin of the Windimurra layered mafic-ultramafic Intrusive Complex (**WIC**). Within the central core of the tenement outcropping basement consists of Archean metagabbro and meta-monzogranite. Throughout the tenement there are several mapped regional NNE trending faults (GSWA 2011). Outward from the central area the geology/regolith is dominated by extensive colluvium and sheetwash.

Historical Exploration

The WIC has a long history of exploration dating back from the early 1970's to the present. It has always been considered prospective for nickel, copper and PGE's mineralisation. Mineralisation styles explored for have included magmatic massive and disseminated sulphides targeted using a range of geophysical techniques, dominated by electro-magnetic surveys which have defined conductor anomalies, providing targets for drilling. There has been very little gold-focussed exploration over the southwestern region of the WIC.

Seremin Pty Ltd held the ground from 2017 to 2022 completing a 652 soil sampling program over mapped sheared mafic volcanics within a northerly trending structural corridor, samples were collected every 25m along 200m spaced lines. A +10ppb gold anomaly extends for approximately 2km and is open to the north and south, maximum gold was 66ppb Au.

Authorised for release by:

Stuart Fogarty

Duketon Mining Limited - Managing Director

+61 8 6315 1490

Competent Person Statement:

The information in this release that relates to exploration results is based on historical and current information compiled by Ms Kirsty Culver, Member of the Australian Institute of Geoscientists (AIG) and an employee of Duketon Mining Limited. Ms Culver has sufficient experience which is relevant to the style of mineralisation and type of deposit under consideration and to the activity that is being undertaken to qualify as a competent person as defined in the JORC Code 2012. Ms Culver consents to the inclusion in the report of the matters based on the information in the form and context in which it appears.

JORC Table 1
JORC Code, 2012 Edition – Table 1 report – Boodanoo Project
Section 1 Sampling Techniques and Data

(Criteria in this section apply to all succeeding sections.)

Criteria	JORC Code explanation	Commentary
Sampling techniques	<ul style="list-style-type: none"> • <i>Nature and quality of sampling (eg cut channels, random chips, or specific specialised industry standard measurement tools appropriate to the minerals under investigation, such as down hole gamma sondes, or handheld XRF instruments, etc). These examples should not be taken as limiting the broad meaning of sampling.</i> • <i>Include reference to measures taken to ensure sample representivity and the appropriate calibration of any measurement tools or systems used.</i> • <i>Aspects of the determination of mineralisation that are Material to the Public Report.</i> • <i>In cases where ‘industry standard’ work has been done this would be relatively simple (eg ‘reverse circulation drilling was used to obtain 1 m samples from which 3 kg was pulverised to produce a 30 g charge for fire assay’). In other cases more explanation may be required, such as where there is coarse gold that has inherent sampling problems. Unusual commodities or mineralisation types (eg submarine nodules) may warrant disclosure of detailed information.</i> 	<ul style="list-style-type: none"> • Soil geochemical samples collected by DKM comprise a minimum weight of 250grams, sieved at minus 2mm fraction from a depth of 100mm. • A total of 149 samples (including standards and blanks) were submitted for analysis.
Drilling techniques	<ul style="list-style-type: none"> • <i>Drill type (eg core, reverse circulation, open-hole hammer, rotary air blast, auger, Bangka, sonic, etc) and details (eg core diameter, triple or standard tube, depth of diamond tails, face-sampling bit or other type, whether core is oriented and if so, by what method, etc).</i> 	<ul style="list-style-type: none"> • No drilling was completed.

personal use only

Criteria	JORC Code explanation	Commentary
<i>Drill sample recovery</i>	<ul style="list-style-type: none"> • <i>Method of recording and assessing core and chip sample recoveries and results assessed.</i> • <i>Measures taken to maximise sample recovery and ensure representative nature of the samples.</i> • <i>Whether a relationship exists between sample recovery and grade and whether sample bias may have occurred due to preferential loss/gain of fine/coarse material.</i> 	<ul style="list-style-type: none"> • Not applicable for soil sampling.
<i>Logging</i>	<ul style="list-style-type: none"> • <i>Whether core and chip samples have been geologically and geotechnically logged to a level of detail to support appropriate Mineral Resource estimation, mining studies and metallurgical studies.</i> • <i>Whether logging is qualitative or quantitative in nature. Core (or costean, channel, etc) photography.</i> • <i>The total length and percentage of the relevant intersections logged.</i> 	<ul style="list-style-type: none"> • For geochemical soil samples - regolith type, topographic slope, vegetation and moisture were recorded.
<i>Sub-sampling techniques and sample preparation</i>	<ul style="list-style-type: none"> • <i>If core, whether cut or sawn and whether quarter, half or all core taken.</i> • <i>If non-core, whether riffled, tube sampled, rotary split, etc and whether sampled wet or dry.</i> • <i>For all sample types, the nature, quality and appropriateness of the sample preparation technique.</i> • <i>Quality control procedures adopted for all sub-sampling stages to maximise representivity of samples.</i> • <i>Measures taken to ensure that the sampling is representative of the in situ material collected, including for instance results for field duplicate/second-half sampling.</i> • <i>Whether sample sizes are appropriate to the grain size of the material being sampled.</i> 	<ul style="list-style-type: none"> • Geochemical samples were pulverised to 85% passing 75µm.
<i>Quality of assay data and</i>	<ul style="list-style-type: none"> • <i>The nature, quality and appropriateness of the assaying and laboratory procedures used and whether the technique is considered partial or total.</i> 	<ul style="list-style-type: none"> • Soil samples were analysed by LabWest Minerals Analysis in Malaga – using analytical technique WAR-25 (partial). This technique uses a 25g pulverised sub-sample analysed for Au using an aqua regia

Criteria	JORC Code explanation	Commentary
<i>laboratory tests</i>	<ul style="list-style-type: none"> • <i>For geophysical tools, spectrometers, handheld XRF instruments, etc, the parameters used in determining the analysis including instrument make and model, reading times, calibrations factors applied and their derivation, etc.</i> • <i>Nature of quality control procedures adopted (eg standards, blanks, duplicates, external laboratory checks) and whether acceptable levels of accuracy (ie lack of bias) and precision have been established.</i> 	<p>digestion, with determination by ICP-MS. This method achieves a lower detection limit of 0.5ppb Au.</p> <ul style="list-style-type: none"> • Standards and blanks were inserted (DKM) at an approximate rate of 1 in 40. • For this assay batch, LabWest's internal QAQC procedure included a total of 23 additional standards and blanks.
<i>Verification of sampling and assaying</i>	<ul style="list-style-type: none"> • <i>The verification of significant intersections by either independent or alternative company personnel.</i> • <i>The use of twinned holes.</i> • <i>Documentation of primary data, data entry procedures, data verification, data storage (physical and electronic) protocols.</i> • <i>Discuss any adjustment to assay data.</i> 	<ul style="list-style-type: none"> • All data compilation is reviewed internally by senior DKM geologists. • The historic data cannot be verified and it has been gleaned from publicly available sources (WAMEX). • Geochemical sample data is logged into excel spreadsheets prior to being imported into the DKM Datashed database. • No adjustment to assay data has been made.
<i>Location of data points</i>	<ul style="list-style-type: none"> • <i>Accuracy and quality of surveys used to locate drill holes (collar and down-hole surveys), trenches, mine workings and other locations used in Mineral Resource estimation.</i> • <i>Specification of the grid system used.</i> • <i>Quality and adequacy of topographic control.</i> 	<ul style="list-style-type: none"> • A handheld Garmin GPS was used to locate geochemical samples, accurate to within 3 metres. Sample coordinates are recorded in GDA94 Zone 50.
<i>Data spacing and distribution</i>	<ul style="list-style-type: none"> • <i>Data spacing for reporting of Exploration Results.</i> • <i>Whether the data spacing and distribution is sufficient to establish the degree of geological and grade continuity appropriate for the Mineral Resource and Ore Reserve estimation procedure(s) and classifications applied.</i> • <i>Whether sample compositing has been applied.</i> 	<ul style="list-style-type: none"> • Soil samples were collected on an 200m x 25m orthogonal grid. • Previous soil samples (Seremin 2021) were collected on a 200m x 25m orthogonal grid. • DKM soil program (reported here) infills previous soil sampling and reduces the overall grid spacing to 100m x 25m.
<i>Orientation of data in relation to</i>	<ul style="list-style-type: none"> • <i>Whether the orientation of sampling achieves unbiased sampling of possible structures and the extent to which this is known, considering the deposit type.</i> • <i>If the relationship between the drilling orientation and the orientation</i> 	<ul style="list-style-type: none"> • Soil sampling was completed on an orthogonal grid pattern orientated N-S/E-W. Possible mineralisation and / or structural trends have yet to be determined for this project.

Criteria	JORC Code explanation	Commentary
<i>geological structure</i>	<i>of key mineralised structures is considered to have introduced a sampling bias, this should be assessed and reported if material.</i>	
<i>Sample security</i>	<ul style="list-style-type: none"> <i>The measures taken to ensure sample security.</i> 	<ul style="list-style-type: none"> Geochemical soil samples were delivered directly to LabWest in Malaga by DKM personnel.
<i>Audits or reviews</i>	<ul style="list-style-type: none"> <i>The results of any audits or reviews of sampling techniques and data.</i> 	<ul style="list-style-type: none"> All DKM generated data has been reviewed by senior company geologists. No audits or reviews have been conducted apart from internal company reviews.

Section 2 Reporting of Exploration Results

(Criteria listed in the preceding section also apply to this section.)

Criteria	JORC Code explanation	Commentary
<i>Mineral tenement and land tenure status</i>	<ul style="list-style-type: none"> <i>Type, reference name/number, location and ownership including agreements or material issues with third parties such as joint ventures, partnerships, overriding royalties, native title interests, historical sites, wilderness or national park and environmental settings.</i> <i>The security of the tenure held at the time of reporting along with any known impediments to obtaining a licence to operate in the area.</i> 	<ul style="list-style-type: none"> Tenement E59/2881 is held by Western Yilgarn NL (Vendor) and is currently in good standing and there are no known impediments to obtaining a licence to operate in the area.
<i>Exploration done by other parties</i>	<ul style="list-style-type: none"> <i>Acknowledgment and appraisal of exploration by other parties.</i> 	<ul style="list-style-type: none"> Previous exploration on E59/2881 has been carried out by Seremin Pty Ltd – 2021. Detailed in WAMEX Report A129467. Reconnaissance soil samples collected over three areas. A total of 679 samples were collected with standards and duplicates. Samples were submitted to LabWest Mineral Analysis in Malaga for low-level gold determination via WAR-25. A 25g charge for Aqua Regia digest (partial) and ICP-MS finish.

Criteria	JORC Code explanation	Commentary
Geology	<ul style="list-style-type: none"> • <i>Deposit type, geological setting and style of mineralisation.</i> 	<ul style="list-style-type: none"> • Typical Archean gold quartz vein mineralisation within mafic rocks.
Drill hole Information	<ul style="list-style-type: none"> • <i>A summary of all information material to the understanding of the exploration results including a tabulation of the following information for all Material drill holes:</i> <ul style="list-style-type: none"> ○ <i>easting and northing of the drill hole collar</i> ○ <i>elevation or RL (Reduced Level – elevation above sea level in metres) of the drill hole collar</i> ○ <i>dip and azimuth of the hole</i> ○ <i>down hole length and interception depth</i> ○ <i>hole length.</i> • <i>If the exclusion of this information is justified on the basis that the information is not Material and this exclusion does not detract from the understanding of the report, the Competent Person should clearly explain why this is the case.</i> 	<ul style="list-style-type: none"> • Not applicable as no drilling reported.
Data aggregation methods	<ul style="list-style-type: none"> • <i>In reporting Exploration Results, weighting averaging techniques, maximum and/or minimum grade truncations (eg cutting of high grades) and cut-off grades are usually Material and should be stated.</i> • <i>Where aggregate intercepts incorporate short lengths of high grade results and longer lengths of low grade results, the procedure used for such aggregation should be stated and some typical examples of such aggregations should be shown in detail.</i> • <i>The assumptions used for any reporting of metal equivalent values should be clearly stated.</i> 	<ul style="list-style-type: none"> • Not applicable as no drilling reported.
Relationship between mineralisation widths and intercept lengths	<ul style="list-style-type: none"> • <i>These relationships are particularly important in the reporting of Exploration Results.</i> • <i>If the geometry of the mineralisation with respect to the drill hole angle is known, its nature should be reported.</i> • <i>If it is not known and only the down hole lengths are reported, there should be a clear statement to this effect (eg 'down hole length, true width not known').</i> 	<ul style="list-style-type: none"> • Mineralisation orientations have not been determined. • No drilling has been completed.

personal use only

Criteria	JORC Code explanation	Commentary
<i>Diagrams</i>	<ul style="list-style-type: none"> • <i>Appropriate maps and sections (with scales) and tabulations of intercepts should be included for any significant discovery being reported These should include, but not be limited to a plan view of drill hole collar locations and appropriate sectional views.</i> 	<ul style="list-style-type: none"> • Refer to figures in document.
<i>Balanced reporting</i>	<ul style="list-style-type: none"> • <i>Where comprehensive reporting of all Exploration Results is not practicable, representative reporting of both low and high grades and/or widths should be practiced to avoid misleading reporting of Exploration Results.</i> 	<ul style="list-style-type: none"> • All soil sample results have been reported in the diagrams within the document.
<i>Other substantive exploration data</i>	<ul style="list-style-type: none"> • <i>Other exploration data, if meaningful and material, should be reported including (but not limited to): geological observations; geophysical survey results; geochemical survey results; bulk samples – size and method of treatment; metallurgical test results; bulk density, groundwater, geotechnical and rock characteristics; potential deleterious or contaminating substances.</i> 	<ul style="list-style-type: none"> • Refer to document.
<i>Further work</i>	<ul style="list-style-type: none"> • <i>The nature and scale of planned further work (eg tests for lateral extensions or depth extensions or large-scale step-out drilling).</i> • <i>Diagrams clearly highlighting the areas of possible extensions, including the main geological interpretations and future drilling areas, provided this information is not commercially sensitive.</i> 	<ul style="list-style-type: none"> • Future work will involve extensional soil sampling and rock chip sampling, geological reconnaissance and mapping.

personal use only