

# ADDITIONAL GROUND SECURED AT STAR RANGE SILVER ANTIMONY PROJECT

*Over 60% landholding expansion strengthens district-scale system and delivers new high-priority targets as exploration progresses.*

## HIGHLIGHTS

- 82 new claims secured, increasing the total number of claims to 186 across ~3,582 acres (45.5km<sup>2</sup>).
- New tenure covers extensions of high-priority structural and geological trends identified during ongoing mapping and sampling.
- Several batches of samples are currently at the laboratory with results pending.
- On-ground exploration expanded to incorporate new targets, including integration with the airborne magnetic survey.

Diablo Resources Limited (**ASX:DBO / OTCQB: DBORF**) (“**Diablo**” or the “**Company**”) is pleased to provide an update for the Star Range critical minerals (Silver-Antimony) Project in southwestern Utah, USA, following a significant expansion of the Project’s landholding. The Project now consists of 186 lode claims totalling ~3,582 acres (14.5km<sup>2</sup>) located on Bureau of Land Management (“**BLM**”) administered lands.

### CEO Lyle Thorne commented:

*“The identification of prospective structural trends during our ongoing fieldwork has led to the staking of additional significant acreage to our existing landholding. This expansion demonstrates the Company’s commitment to the Project and our belief in the USA’s domestic critical minerals policies and initiatives moving forward.*

*With samples at the laboratory and fieldwork ongoing, the Company is forging ahead with focused and systematic exploration aimed at unlocking the Project’s critical minerals potential.*

*Combined with the current drilling at our Phoenix Copper Project, including our maiden program at the high-priority Fair Dinkum Prospect, it is an exciting and busy time for DBO. We look forward to providing updates to shareholders as results come to hand.”*

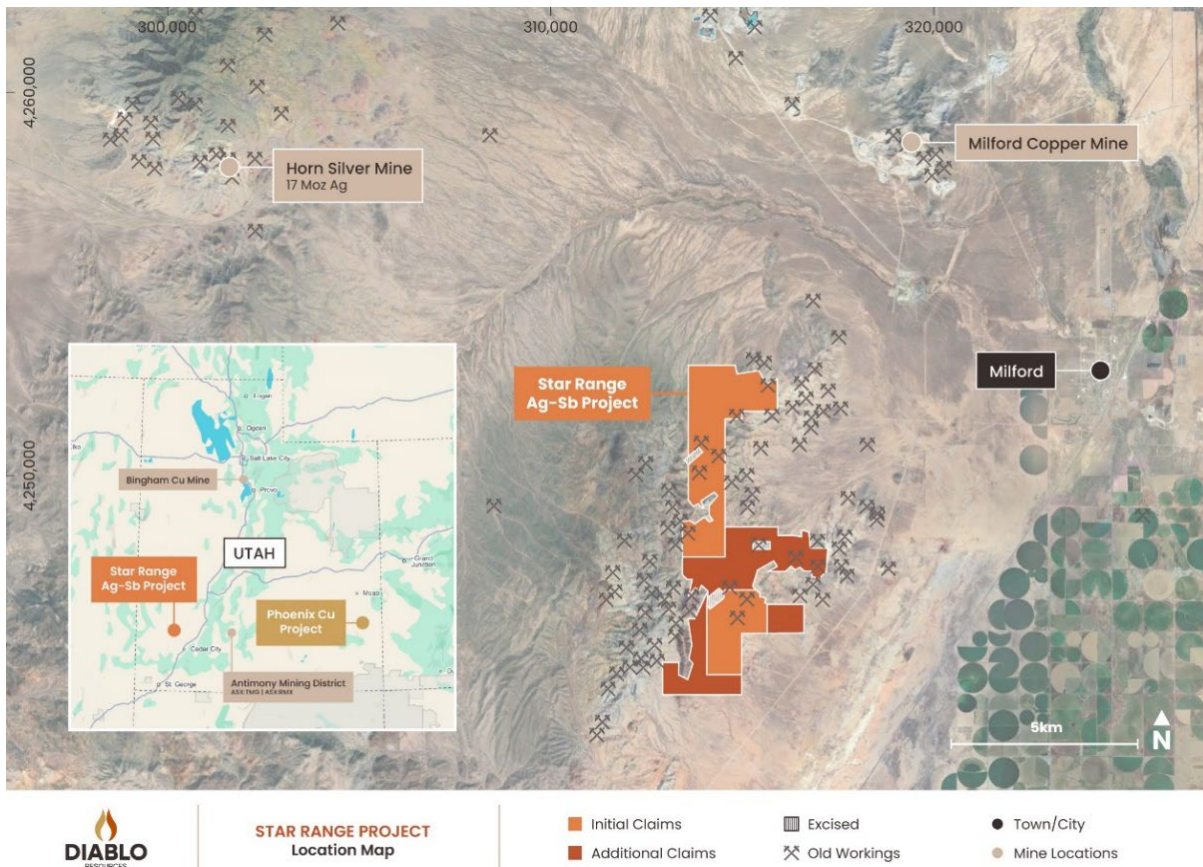




**Figure 1 - Views of Star Range project Expansion area, including old workings (now reclaimed)**

The additional ground was identified and staked over prospective structural and geological trends mapped during the ongoing field program. These observations were further supported by the presence of old workings, dozer scrapes and shallow pits, indicative of historical activity dating back to the late 1800's.

The newly acquired claims consolidate the initial Project area into one contiguous land package and capture extensions of known mineralised trends, providing additional high-priority target areas to explore (Figures 2 & 3).



**Figure 2- Project Location Map**

For personal use only



## PROJECT OVERVIEW

### LOCATION

The Star Range Project located ~6km west of the town of Milford in Beaver County, southwestern Utah, USA, and now consists of 186 unpatented lode claims for ~3,582 acres (14.5km<sup>2</sup>).

The Project benefits from excellent infrastructure, including maintained gravel roads, nearby power and gas utilities and proximity to the Union Pacific Railway line through Milford, supporting efficient logistics for exploration and development.

The Project is located proximal to two significant mineral occurrences, the historical Horn Silver mine and the Milford Copper Mine.

The Horn Silver mine, located 15km northwest of the Project was one of the largest producers of silver in the United States until 1930. During its production history, the Horn Silver Mine produced 17 Moz of silver, 25 Koz of gold and 9 Mlb of copper, all from a single 20 acre (8ha) mining claim<sup>11</sup>. Total production from 1875 through 1952 (the last year of operation) was 835,000 tons, averaging 21.5 ounces per ton of silver and 23% lead. A zone of supergene copper enrichment was mined mainly between 1899 and 1905<sup>2</sup>.

Several open-pit copper deposits are currently being mined by Milford Mining<sup>3</sup> ~9km north of the Project area. No resources or production figures are publicly available.

### GEOLOGY

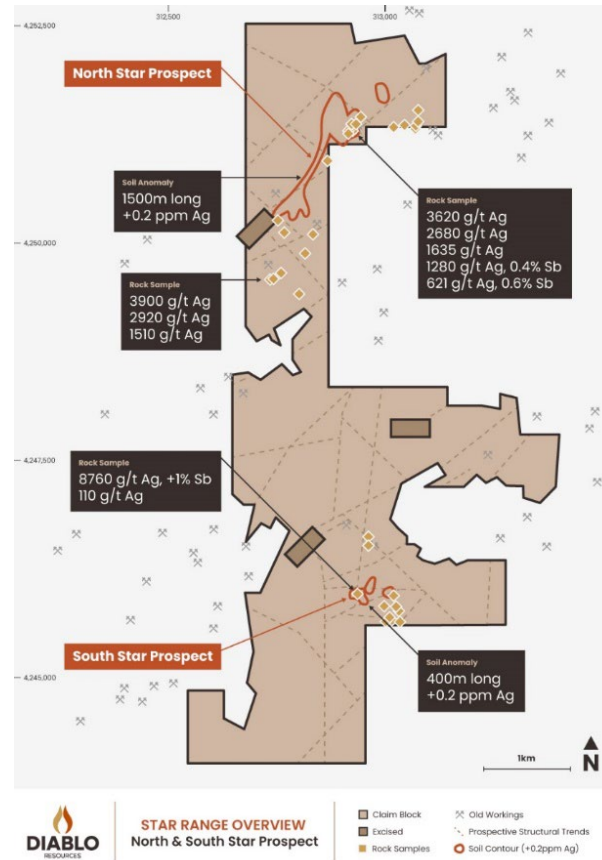
The Project is located within the Star Range in southwestern Utah, a site of intense historical mining activity until the mid-1960s producing lead, zinc, copper, gold and silver.

It lies within the structurally controlled Basin & Range style mountain range consisting of block-faulted sediments, predominantly siliciclastics and carbonates of Palaeozoic to Tertiary Age. This package of generally north-striking, east-dipping sediments has been intruded and metamorphosed by intrusive rocks of granitic composition.

The Project area hosts numerous old workings, the majority of which were exploited in the late 1800's for base and precious metals. Mineralisation is known to occur as structurally controlled manto-replacement style and breccia vein systems along sediment contacts.

### PREVIOUS EXPLORATION

Sporadic exploration has been completed by several companies over the last 20 years and details of publicly available exploration since 2012-13 are provided below, with 372 rock samples and 406 soil samples identified from public domain sources. Antimony was not a primary focus for previous explorers.



**Figure 3- Overview Map, showing previous exploration<sup>1</sup> and selected results**

Results from this historical exploration returned highly encouraging silver results. The majority of historical sampling did not report antimony, leaving significant upside potential.

Highlights of the previous sampling include:

- **Historical rock sampling includes bonanza silver grades up to 8,760 g/t Ag (309 oz/t) and antimony >1% Sb at surface<sup>1</sup>.**
  - **South Star Prospect** significant rock samples returned<sup>1</sup>:
    - 8,760 g/t Ag and +1% Sb
    - 1,190 g/t Ag & 0.2% Sb
    - 938 g/t Ag and 0.2% Sb
    - 1,110 g/t Ag
  - **North Star Prospect** significant rock samples returned<sup>1</sup>:
    - 1,310 g/t Ag and 0.4% Sb
    - 1,380 g/t Ag and 0.5% Sb
    - 621 g/t Ag and 0.6% Sb



- Historical soil programs outlined large-scale silver anomalies at both North Star (1.5km) and South Star (400m), with no drilling completed to date over these zones<sup>1</sup>.

These results provide several priority targets for immediate exploration follow-up. When combined with regional sampling, mapping and airborne survey data, they will greatly support the planning of further exploration activities, including the Company's maiden drilling program.

### **NEXT STEPS**

- Incorporation of newly secured ground into ongoing exploration programs, including geochemical sampling, mapping and aeromagnetics.
- Interpret assays and update geological models to refine understanding of mineralisation controls, continuity, and scale across priority target areas.
- Active review of further critical mineral opportunities in the USA using the Company's in-country expertise.

**-END-**

This announcement has been authorised for release by the Board.

For more information visit [diabloresources.com.au](http://diabloresources.com.au) or contact:

Lyle Thorne  
Chief Executive Officer

Email : [lt@diabloresources.com.au](mailto:lt@diabloresources.com.au)

### **Competent Persons Statement**

The information in this announcement that relates to Exploration Results is based on information compiled by Lyle Thorne, who is a Member of AusIMM and who has more than five years' experience in the field of activity being reported on. Mr Thorne is an employee of the Company. The information in the market announcement is an accurate representation of the available data. Mr. Thorne has sufficient experience which is relevant to the style of mineralisation and type of deposit under consideration and to the activity which he is undertaking to qualify as a Competent Person as defined in the 2012 Edition of the 'Australasian Code for Reporting of Exploration Results, Mineral Resources and Ore Reserves'. Mr. Thorne consents to the inclusion in the report of the matters based on his information in the form and context in which it appears.

### **Future Performance**

This announcement may contain certain forward-looking statements and opinion. Forward-looking statements, including projections, forecasts and estimates, are provided as a general guide only and should not be relied on as an indication or guarantee of future performance and involve known and unknown risks, uncertainties, assumptions, contingencies and other important factors, many of which are outside the control of the Company and which are subject to change without notice and could cause the actual results, performance or achievements of the Company to be materially different from the future results, performance or achievements expressed or implied by such statements. Past



performance is not necessarily a guide to future performance and no representation or warranty is made as to the likelihood of achievement or reasonableness of any forward-looking statements or other forecast. Nothing contained in this announcement, nor any information made available to you is, or and shall be relied upon as, a promise, representation, warranty or guarantee as to the past, present or the future performance of Diablo.

#### REFERENCES

1. ASX ANNOUNCEMENT (1<sup>ST</sup> OCTOBER 2025) – PLACEMENT COMPLETED FOR ACQUISITION OF CRITICAL MINERALS PROJECT-, DIABLO RESOURCES LTD
2. <https://www.hornsilvermines.com/properties>
3. <https://milfordmining.com/>

For personal use only

