

WESTERN MINES GROUP

THE MULGA TANK NICKEL SULPHIDE DISCOVERY

COMPANY AGM PRESENTATION
28 NOVEMBER 2025

58.69 28 Ni Nickel	58.93 27 Co Cobalt	63.55 29 Cu Copper	106.4 46 Pd Palladium	195.1 78 Pt Platinum
---------------------------------	---------------------------------	---------------------------------	------------------------------------	-----------------------------------

@westernmines



Western Mines Group



ASX: **WMG**

www.westernmines.com.au

DISCLAIMER



NATURE OF THIS DOCUMENT

This presentation has been prepared by Western Mines Group Ltd ACN 640 738 834 (Company). The information is based on publicly available information, internally developed data and other sources. By receiving this presentation, you acknowledge and represent to the Company that you have read, understood and accepted the terms of this disclaimer.

It is the responsibility of all recipients of this presentation to obtain all necessary approvals to receive this presentation and receipt of this presentation will be taken by the Company to constitute a representation and warranty that all relevant approvals have been obtained.

This presentation is a visual aid and is not intended to be read as a stand-alone document. The material contains selected and abbreviated summary information about the Company and its activities current as at the date of this presentation. The material is of general background and does not purport to be complete. The Company is not responsible for providing updated information and assumes no responsibility to do so.

NOT AN OFFER

This presentation is for information purposes only and does not purport to be all inclusive or to contain all information about the Company or any of the assets, current or future, of the Company. This presentation does not comprise a prospectus, product disclosure statement or other offering document under Australian law (and will not be lodged with ASIC) or any other law.

This presentation also does not constitute or form part of any invitation, offer for sale or subscription or any solicitation for any offer to buy or subscribe for any securities in any jurisdiction nor shall they or any part of them form the basis of or be relied upon in connection therewith or act as any inducement to enter into any contract or commitment with respect to securities.

This presentation does not constitute an offer to sell, or a solicitation of an offer to buy, any securities in the United States. This presentation and its contents must not be distributed, transmitted or viewed by any person in the United States or any jurisdiction where the distribution, transmission or viewing of this document would be unlawful under the securities or other laws of that or any other jurisdiction.

NOT INVESTMENT ADVICE

To the maximum extent permitted by law, the information contained in this presentation is given without any liability whatsoever being accepted by the Company or any of its related bodies corporate or their respective directors, officers, partners, employees, advisors and agents. This presentation is not investment or financial product advice (nor tax, accounting or legal advice) and its contents are not intended to be used for the basis of making an investment decision. No representation or warranty, express or implied, is made as to the accuracy, completeness or thoroughness of the information, whether as to the past or future.

Recipients of this presentation should carefully consider whether the company is an appropriate investment for them in light of their personal circumstances, including their financial and taxation position. This presentation does not take into account the individual investment objectives, financial situation and particular needs of each recipient of this presentation. Therefore, recipients of this presentation may wish to seek independent financial and taxation advice before making any decision in respect of this presentation. Neither the Company nor any of its related bodies corporate is licensed to provide financial product advice in respect of the Company's securities or any other financial products.

FORWARD LOOKING STATEMENTS

Statements and material contained in this presentation, particularly those regarding possible or assumed future performance, production levels or rates, commodity prices, resources or potential growth of the Company, industry growth or other trend projects are, or may be, forward looking statements. Such statements relate to future events and expectations and, as such, involve known and unknown risks and uncertainties and are based on the assumptions, estimates, analysis and opinions of management made in light of its experience and its perception of trends, current conditions and expected developments, as well as other factors that management of the Company believes to be relevant.

Although management believes that the assumptions made by the Company and the expectations represented by such information are reasonable, there can be no assurance that the forward-looking information will prove to be accurate. Forward-looking information involves known and unknown risks, uncertainties, and other factors which may cause the actual results, performance or achievements of the Company to be materially different from any anticipated future results, performance or achievements expressed or implied by such forward-looking information. Such factors include, among others, the actual market price of commodities, the actual results of current exploration, the actual results of future exploration, changes in project parameters as plans continue to be evaluated, as well as those factors disclosed in the Company's publicly filed documents. Readers should not place undue reliance on forward-looking information. The Company does not undertake to update any forward-looking information, except in accordance with applicable securities laws.

DISCLAIMER

No representation or warranty, express or implied, is made by the Company that the material contained in this presentation will be achieved or prove to be correct. Except for statutory liability which cannot be excluded, each of the Company, its directors, officers, employees, advisors and agents expressly disclaims any responsibility for the accuracy, fairness, sufficiency or completeness of the material contained in this presentation, or any opinions or beliefs contained in this presentation, and excludes all liability whatsoever (including in negligence) for any loss or damage which may be suffered by any person as a consequence of any information in this presentation or any error or omission therefrom. To the maximum extent permitted by the law, the Company disclaims any obligation to update or keep current the information contained in this presentation or to correct any inaccuracy or omission which may become apparent, or to furnish any person with any further information. Any opinions expressed in the presentation are subject to change without notice.

COMPETENT PERSON STATEMENT

The information in this announcement that relates to exploration results and the Mineral Resource Estimate for the Mulga Tank Project complies with the 2012 Edition of the Joint Ore Reserves Committee (JORC) Australasian Code for Reporting of Exploration Results, Mineral Resources and Ore Reserves (JORC Code) and has been compiled and assessed under the supervision of Dr Caedmon Marriott, Managing Director of Western Mines Group Ltd. Caedmon is a member of the Australian Institute of Geoscientists and the Society of Economic Geologists. Caedmon has sufficient experience that is relevant to the styles of mineralisation and types of deposit under consideration, and to the activity being undertaken, to qualify as a Competent Person as defined in the 2012 Edition of the 'Australasian Code for Reporting of Exploration Results, Mineral Resources and Ore Reserves'. Caedmon consents to the inclusion in this presentation of the matters based on his information in the form and context in which it appears.

MONETARY VALUES

Unless otherwise stated, all dollar values are in Australian Dollars (A\$). The information in this presentation remains subject to change without notice.

WESTERN MINES GROUP COMPANY OVERVIEW

- **Exceptional flagship project** – discovery of a major komatiite hosted nickel sulphide mineral system under cover in WA
- “Globally significant” – **Mineral Resource 1,968Mt at 0.27% Ni over 5.3Mt contained Ni**
- Largest nickel sulphide deposit in Australia and Top 10 in the World
- Camp-scale project targeting both low-grade disseminated and high-grade massive sulphide
- Exploration team lead by **WA nickel expert** Dr Ben Grguric
- **Tight capital structure** with ~\$25m market cap
- **Highly leveraged to ongoing exploration success**

Western Mines Group Ltd

ASX:WMG

Shares Outstanding	113,748,344
Share Price (26/10/25)	\$0.22
Market Capitalisation	\$25.02 Million
Cash (30/10/25)	\$3.99 Million
Unlisted Options (-\$0.30 strike)	16,650,577

Equentia Natural Resources

5.9%

Directors and Management

8.0%

Top 20 Shareholders

49.1%

Rex Turkington *Non-Executive Chairman*
Capital Markets | Corporate Management



Dr Caedmon Marriott *Managing Director*
Exploration | Capital Markets



Francesco Cannavo *Non-Executive Director*
Business Development | Capital Markets



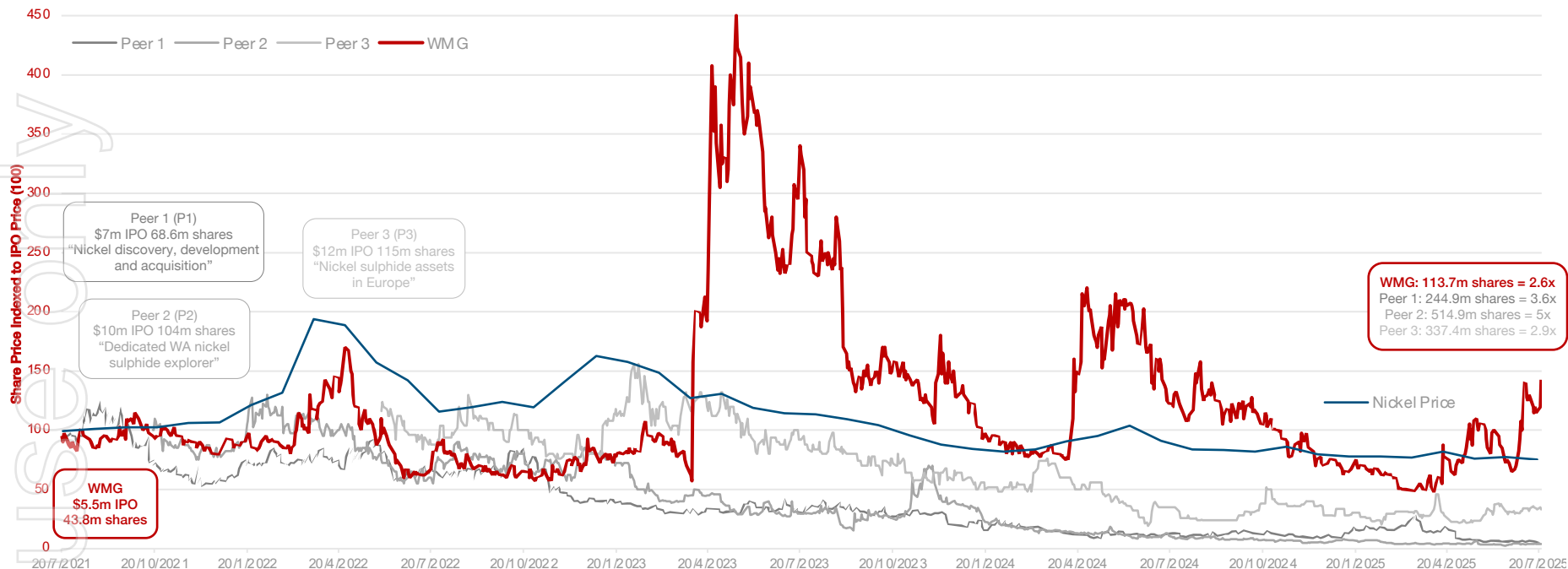
Dr Benjamin Grguric *Technical Director*
Exploration | Corporate Management



SIGNIFICANT NEAR TERM NEWS FLOW | SMALL MARKET CAP | EXCITING RISK-REWARD

RUN BY "OWNERS" FOR THE OWNERS

LOOK AFTER THE SHARE COUNT AND THE SHARE PRICE WILL LOOK AFTER ITSELF



DETERMINED | PERSISTENT | FRUGAL | EFFICIENT | PER SHARE DRIVEN | HIGH-QUALITY EXPLORATION

WHY NICKEL?

NICKEL MARKET IS AT CYCLICAL LOWS BUT SETTING UP FOR STRUCTURALLY HIGHER FUTURE PRICES

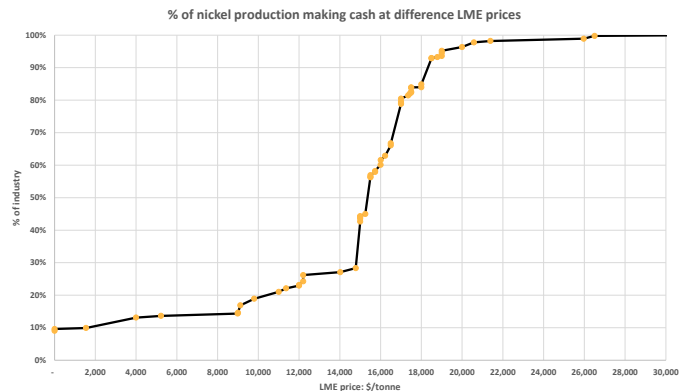
- DEMAND
 - Stainless steel ~68% global demand = function of GDP growth
 - Key component of EV battery chemistry and energy transition = demand kicker
 - Analysts routinely underestimate nickel demand
- SUPPLY
 - Indonesia growing to ~75% global production = largely Chinese owned
 - “ONEC” could manage supply and pricing
 - Ore grades falling = costs rising
 - Ore royalty increase = costs rising
 - Increasing push for ESG compliance = costs rising

Price floor and stable higher prices

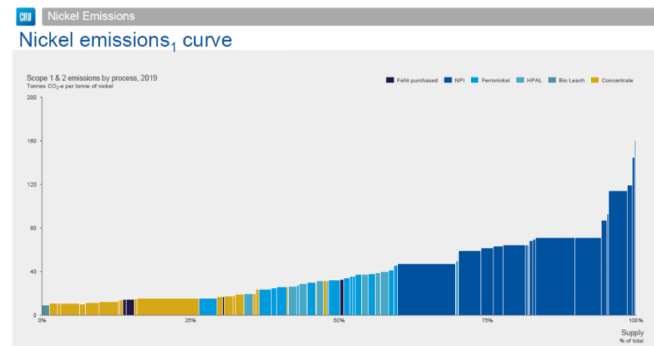
- Nickel sulphide is the lowest quartile in CO₂ intensity
- Polymetallic Ni-Co-Cu-PGE deposits some of the highest value per tonne deposits on the plant
- Positive themes for pricing – supply chain security, ESG, supply chain tracing, European Battery Passport, “blood nickel”...

Strategic western sulphide projects

WHERE WILL THE WESTERN WORLD SOURCE ITS FUTURE NICKEL?



Source: Macquarie Commodities Strategy June 2024



FRONTIER EXPLORATION IN A WORLD CLASS NICKEL PROVINCE

YILGARN CRATON WESTERN AUSTRALIA

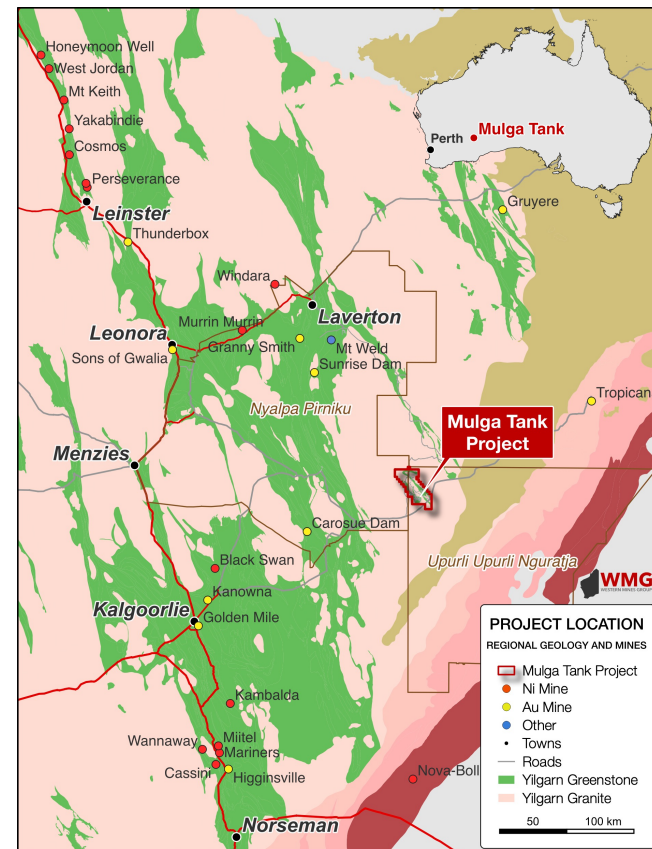
- One of the world's major nickel provinces
- World-class examples of komatiite-hosted nickel deposits – Perseverance (50Mt @ 2.3% Ni), Mt Keith (643.7Mt @ 0.58% Ni) and Kambalda (35Mt @ 3.1% Ni)

MULGA TANK Ni-Co-Cu-PGE PROJECT

- New search space – frontier exploration for major komatiite-hosted Ni-Co-Cu-PGE deposits under cover
- Strategically assembled 425km² position on the under-explored Minigwal Greenstone Belt
- Mulga Tank Ultramafic Complex (WGM 100%) is a "camp scale" project

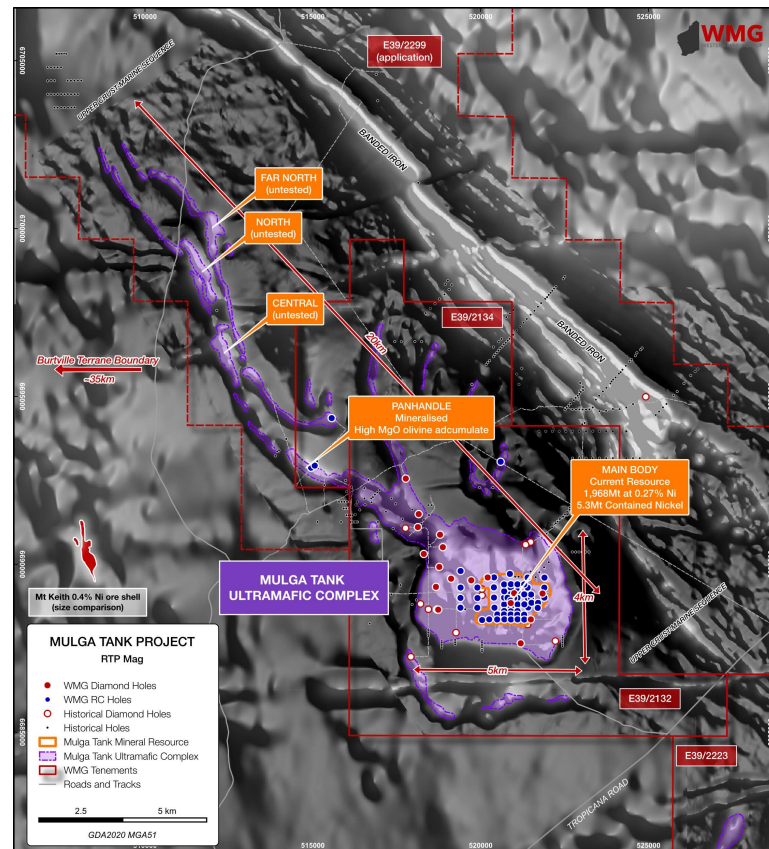
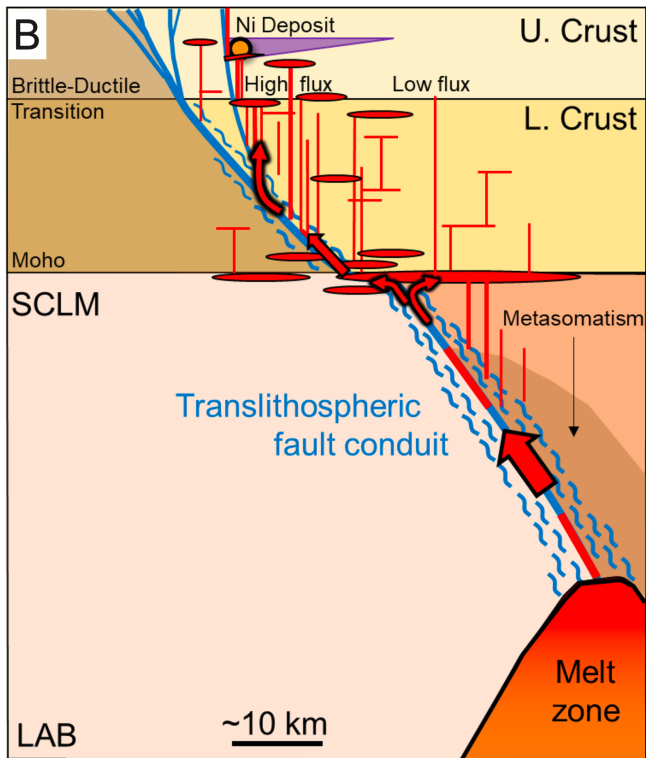
EXPLORATION MODELS ARE PERSEVERANCE AND MT KEITH

Model	PERSEVERANCE	MT KEITH
Type	Type 1 Stratiform Basal Massive Sulphide	Type 2 Interstitial Disseminated Sulphide
Size	650m x 160m	1,900m x 400m



BELT SCALE OPPORTUNITY WMG OWN 100%

MAJOR KOMATIITE NICKEL SYSTEM CLOSE TO TERRANE BOUNDARY



Internal use only

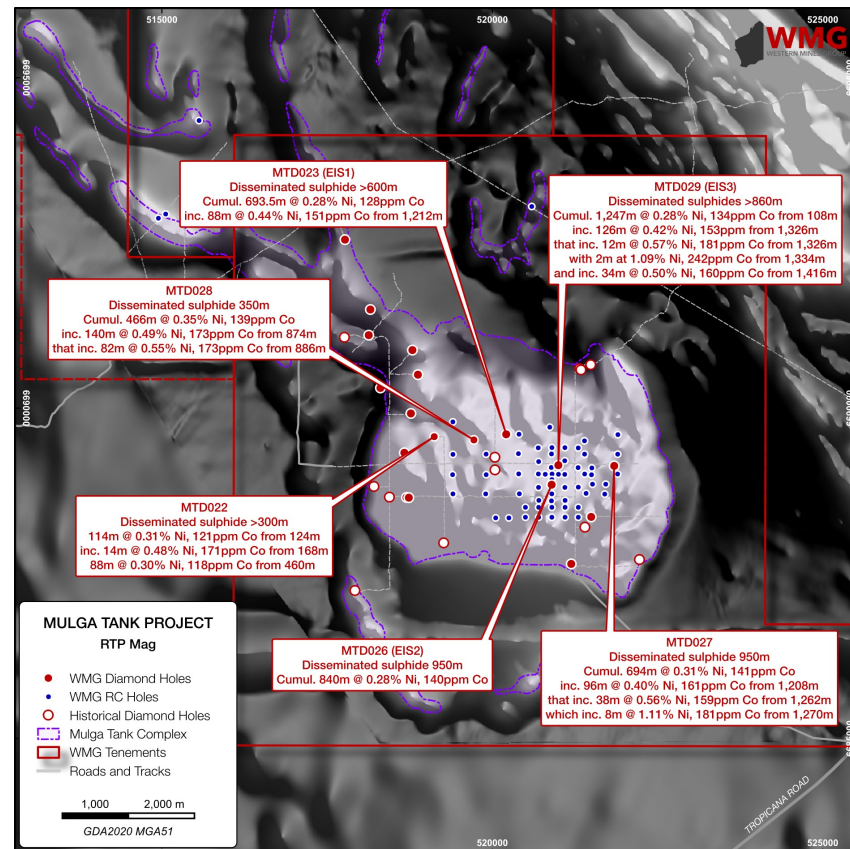
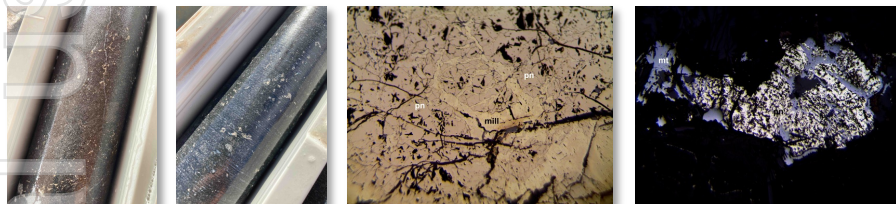
DISCOVERY OF EXTENSIVE MT KEITH-STYLE MAGMATIC SULPHIDE

DISSEMINATED SULPHIDES OVER >500M INTERVALS

- Deep diamond EIS holes MTD023 and MTD026 intersected extensive disseminated magmatic sulphides
- MTD023: Cumulative 693.5m at 0.28% Ni, 128ppm Co, 61ppm Cu, 27ppb Pt+Pd with S:Ni 1.1
- MTD026: Cumulative 840m at 0.28% Ni, 140ppm Co, 103ppm Cu, 24ppb Pt+Pd with S:Ni 1.6
- MTD027: Cumulative 694m at 0.31% Ni, 141ppm Co, 68ppm Cu, 30ppb Pt+Pd with S:Ni 1.0
- MTD028: Cumulative 466m at 0.35% Ni, 139ppm Co, 62ppm Cu, 43ppb Pt+Pd with S:Ni 1.0
- MTD029: Cumulative 1,247m at 0.28% Ni, 134ppm Co, 76ppm Cu, 24ppb Pt+Pd with S:Ni 1.0

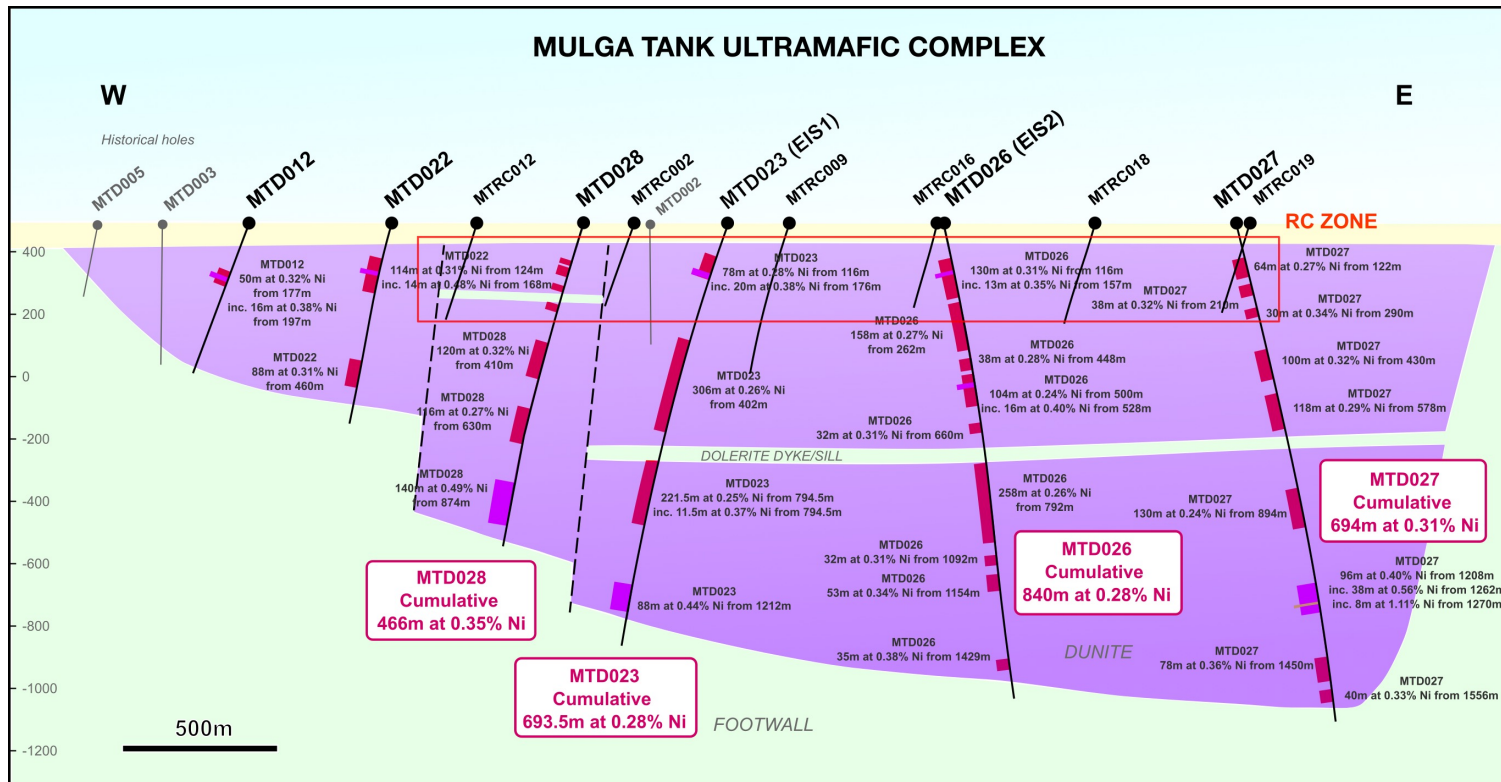
WITH EXAMPLES OF SHALLOW MINERALISED INTERVALS:

- MTD022: 114m at 0.31% Ni, 121ppm Co, 33ppm Cu from 124m inc. 14m at 0.48% Ni, 171ppm Co, 152ppm Cu from 168m
- MTD026: 130m at 0.31% Ni, 136ppm Co, 122ppm Cu from 116m inc. 13m at 0.35% Ni, 142ppm Co, 301ppm Cu from 157m
- Mineralogical work confirms abundant coarse grained pentlandite



GLOBALY SIGNIFICANT NICKEL SULPHIDE SYSTEM

BRAVE LITTLE COMPANY DRILLING 1,500M DIAMOND HOLES



Internal use only

RC PROGRAMS CONFIRMED SHALLOW MINERALISATION

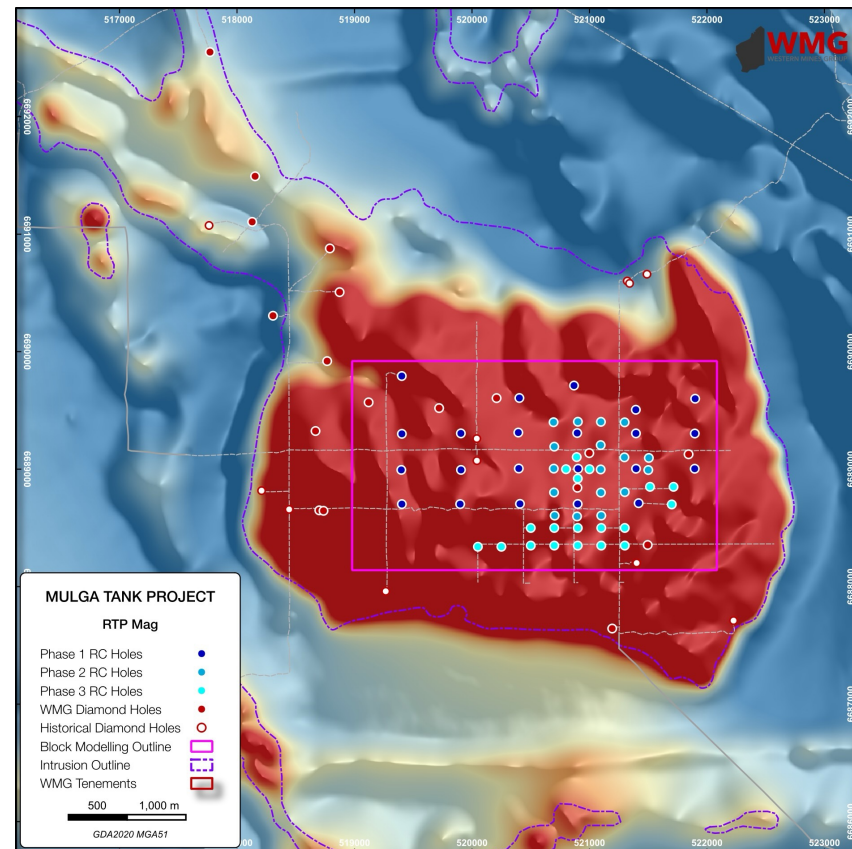
FIRST EVER SYSTEMATIC EXPLORATION OF MULGA TANK

- 3 Phases of RC drilling with 58 RC holes totalling 18,571m
- Systematic ~200m x 200m and ~100m x 100m spacing to average 320m depth

➤ 59 out of 62 RC holes mineralised to date

MULTIPLE HOLES MINERALISED OVER >200m WIDTHS INCLUDING:

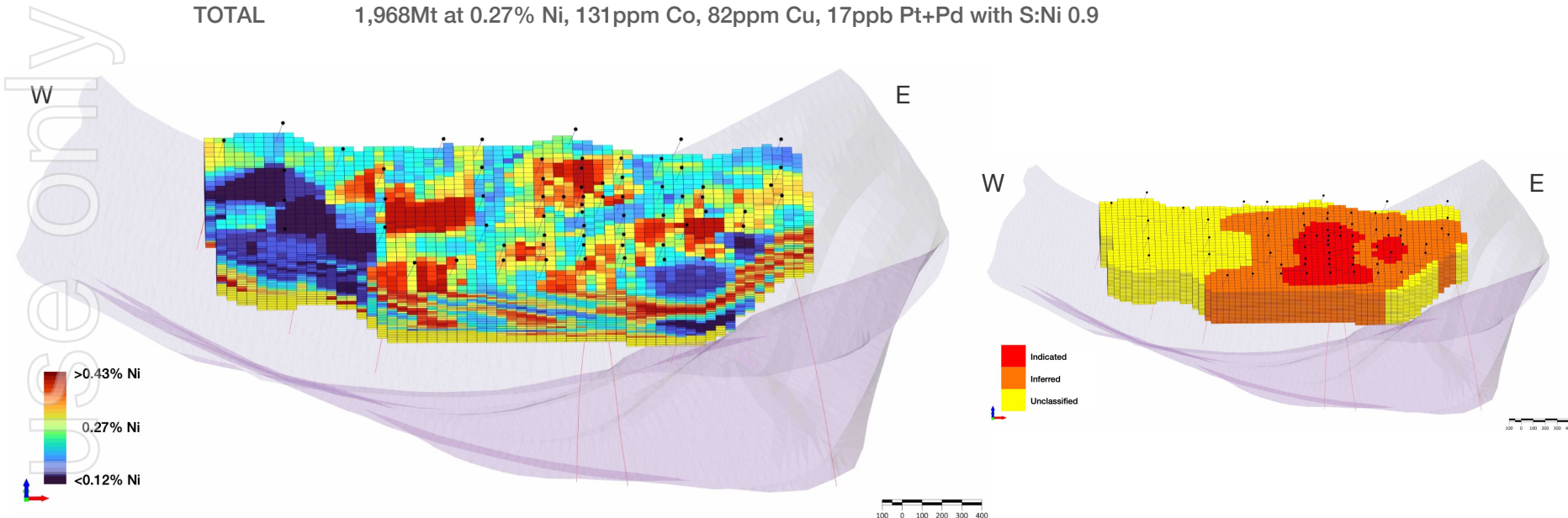
- MTRC016: 200m at 0.30% Ni, 139ppm Co, 92ppm Cu, 25ppb Pt+Pd from 103m with S:Ni 1.2
- MTRC018: Cumulative 209m at 0.28% Ni, 129ppm Co, 381ppm Cu, 18ppb Pt+Pd with S:Ni 1.3
- MTRC020: Cumulative 220m at 0.28% Ni, 132ppm Co, 112ppm Cu, 18ppb Pt+Pd with S:Ni 1.1
- MTRC024: 199m at 0.31% Ni, 148ppm Co, 76ppm Cu, 23ppb Pt+Pd from 161m with S:Ni 1.1
- MTRC025: Cumulative 239m at 0.28% Ni, 139ppm Co, 72ppm Cu, 19ppb Pt+Pd with S:Ni 1.2
- MTRC031: 210m at 0.28% Ni, 137ppm Co, 104ppm Cu, 24ppb Pt+Pd from 87m with S:Ni 1.2
- MTRC032: 198m at 0.28% Ni, 145ppm Co, 249ppm Cu, 28ppb Pt+Pd from 108m with S:Ni 1.6
- MTRC034: 240m at 0.30% Ni, 133ppm Co, 133ppm Cu, 36ppb Pt+Pd from 90m with S:Ni 1.0
- MTRC037: 224m at 0.29% Ni, 139ppm Co, 208ppm Cu, 25ppb Pt+Pd from 91m with S:Ni 1.0
- MTRC038: 199m at 0.31% Ni, 139ppm Co, 260ppm Cu, 27ppb Pt+Pd from 119m with S:Ni 1.3
- MTRC040: Cumulative 298m at 0.29% Ni, 131ppm Co, 65ppm Cu, 16ppb Pt+Pd with S:Ni 1.1
- MTRC042: Cumulative 238m at 0.29% Ni, 133ppm Co, 96ppm Cu, 24ppb Pt+Pd with S:Ni 1.1
- MTRC046: 193m at 0.33% Ni, 152ppm Co, 310ppm Cu, 25ppb Pt+Pd from 107 with S:Ni 1.5
- MTRC053: 205m at 0.28% Ni, 129ppm Co, 85ppm Cu, 16ppb Pt+Pd from 87m with S:Ni 1.0
- MTRC055: 216m at 0.30% Ni, 144ppm Co, 109ppm Cu, 20ppb Pt+Pd from 84m with S:Ni 1.2
- MTRC056: 201m at 0.31% Ni, 134ppm Co, 176ppm Cu, 15ppb Pt+Pd from 81m with S:Ni 0.9
- MTRC058: 209m at 0.29% Ni, 132ppm Co, 50ppm Cu, 18ppb Pt+Pd from 91m with S:Ni 0.8



MINERAL RESOURCE ESTIMATE OF OVER 5.3MT CONTAINED NICKEL

MRE (JORC 2012) OF SHALLOW MINERALISATION TO ~400M DEPTH

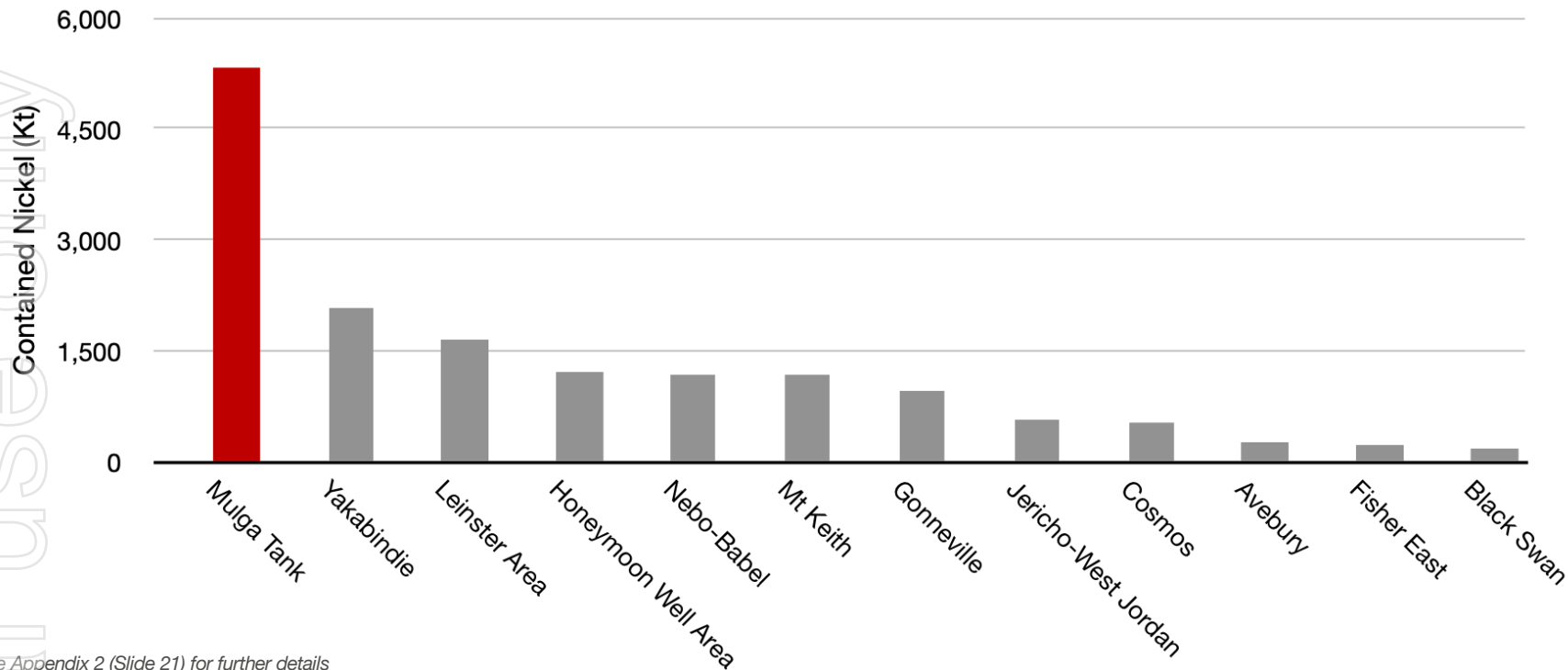
INDICATED	565Mt at 0.28% Ni, 134ppm Co, 105ppm Cu, 18ppb Pt+Pd with S:Ni 1.0
INFERRED	1,403Mt at 0.27% Ni, 129ppm Co, 73ppm Cu, 17ppb Pt+Pd with S:Ni 0.9
TOTAL	1,968Mt at 0.27% Ni, 131ppm Co, 82ppm Cu, 17ppb Pt+Pd with S:Ni 0.9



See Appendix 1 (Slide 20) for further details

LARGEST NICKEL SULPHIDE DEPOSIT IN AUSTRALIA...

TOTAL RESOURCE 1,968Mt AT 0.27% Ni FOR 5.3Mt CONTAINED NICKEL



See Appendix 2 (Slide 21) for further details

...AND LIKELY TOP 10 IN THE WORLD

LARGE LOW-GRADE NICKEL SULPHIDE WILL BECOME AN ESSENTIAL NEW SUPPLY OF WESTERN WORLD NICKEL

- Largest nickel sulphide deposits in the world:

Deposit	Contained Nickel (M&I)	Ni Grade	Producing	Company
Norilsk-Talnakh (Russia)	11.3Mt	0.75%	Yes	Nornickel
Crawford (Canada)	6.0Mt	0.24%	No	Canada Nickel
Dumont (Canada)	4.4Mt	0.27%	No	Magneto Investments
Jinchuan (China)	4.4Mt	1.39%	Yes	Jinchuan Group
Sotkamo (Finland)	3.9Mt	0.23%	Yes	Terrafame
Turnagain (Canada)	3.2Mt	0.21%	No	GigaMetals
Mt Keith/Yakabindie (Australia)	2.6Mt	0.58%	Yes	BHP
Decar (Canada)	2.4Mt	0.21%	No	FPX Nickel

Source: Canada Nickel Investor Presentations April 2023 and July 2025

- Canada Nickel (TSX-V:CNC) leading the way – Crawford BFS October 2023:

Proven and Probable Reserves of 1.715Bnt at 0.22% Ni

Mining and processing 42Mtpa with 2.33:1 strip ratio LoM

Producing 38Ktpa Ni for 41yrs with 41% LoM Ni recovery

US\$1.9Bn initial capex

NPV₈ US\$ 2.5Bn with 17.1% after-tax IRR

Total onsite costs US\$10.88/t milled with estimated US\$3,395/t net AISC

Source: Crawford Nickel Sulphide Project NI 43-101 Technical Report and Feasibility Study October 2023

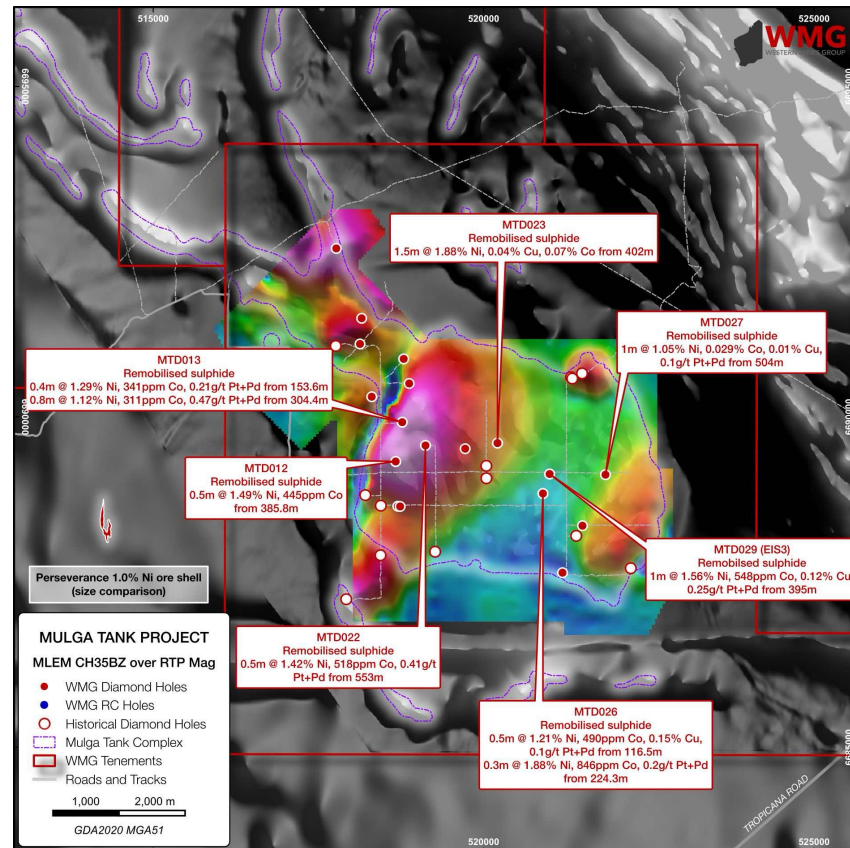
PROJECT REQUIREMENTS

- Minimum 30Mtpa operation
- >40year minelife
- >0.25% Ni orebody
- >40% Ni recovery
- <2:1 strip ratio
- <A\$4.00/t unit mining cost

ITS NOT MT KEITH - ITS A PERSEVERANCE-STYLE HYBRID SYSTEM

HIGH-GRADE COMPONENT TO MINERALISATION

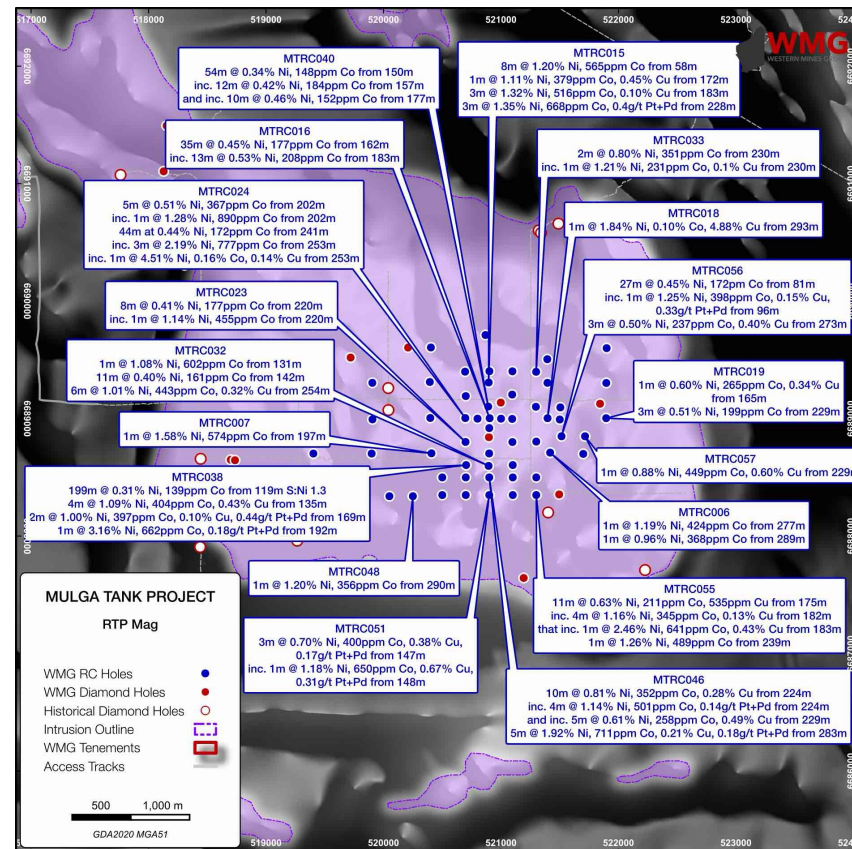
- Processes working to coalesce sulphides and form massive sulphide deposits
- Multiple zones of remobilised massive nickel sulphide veinlets, in-situ immiscible globules and sulphide segregations seen in diamond core across the Complex
- MTD012: 0.5m at 1.49% Ni, 0.04% Cu and 0.04% Co from 385.8m
- MTD013: 1.6m at 0.83% Ni and 0.30g/t Pt+Pd from 304m inc. 0.4m at 1.34% Ni, 0.04% Co and 0.55g/t Pt+Pd from 304.4m and 0.4m at 1.29% Ni and 0.43g/t Pt+Pd from 153.6m
- MTD022: 0.15m at 2.73% Ni, 0.08% Cu, 0.06% Co and 0.10g/t Pt+Pd from 525.15m and 0.5m at 1.42% Ni, 0.05% Cu, 0.04% Co and 0.41g/t Pt+Pd from 553m
- MTD023: 1.5m at 1.88% Ni, 0.04% Cu, 0.07% Co from 402m
- MTD026: 0.5m at 1.21% Ni, 0.05% Co, 0.15% Cu, 0.1g/t Pt+Pd from 116.5m and 0.3m at 1.88% Ni, 0.08% Co, 0.08% Cu, 0.2g/t Pt+Pd from 224.3m
- MTD027: 1.0m at 1.05% Ni, 0.03% Co, 0.01% Cu, 0.1g/t Pt+Pd from 504m
- Sulphide material migrates along faults and fractures – *from where?*



SHALLOW HIGH-GRADE RESULTS IN RC DRILLING

SEMI-MASSIVE NICKEL-COPPER SULPHIDE IN RC

- Higher grade results in the central-eastern area of the Complex
- MTRC015: 1m at 1.11% Ni, 516ppm Co, 0.45% Cu, 62ppb Pt+Pd from 172m
3m at 1.32% Ni, 56ppm Co, 0.10% Cu, 34ppb Pt+Pd from 184m
2m at 1.71% Ni, 836ppm Co, 0.10% Cu, 0.4g/t Pt+Pd from 229m
- MTRC018: 1m at 1.84% Ni, 0.10% Co, 4.88% Cu, 26ppb Pt+Pd from 293m
- MTRC024: 3m at 2.19% Ni, 777ppm Co, 597ppm Cu, 9ppb Pt+Pd from 253m
inc. 1m at 4.51% Ni, 0.16% Co, 0.14% Cu, 16ppb Pt+Pd from 253m
- MTRC032: 1m at 1.08% Ni, 602ppm Co, 379ppm Cu, 83ppb Pt+Pd from 131m
6m at 1.01% Ni, 443ppm Co, 0.32% Cu, 0.12g/t Pt+Pd from 254m
- MTRC038: 2m at 1.51% Ni, 539ppm Co, 0.72% Cu, 94ppb Pt+Pd from 135m
1m at 3.16% Ni, 662ppm Co, 385ppm Cu, 0.18g/t Pt+Pd from 192m
- MTRC046: 4m at 1.14% Ni, 501ppm Co, 803ppm Cu, 0.14g/t Pt+Pd from 224m
5m at 1.92% Ni, 711ppm Co, 0.21% Cu, 0.18g/t Pt+Pd from 283m
- MTRC055: 4m at 1.16% Ni, 345ppm Co, 0.13% Cu, 6ppb Pt+Pd from 182m
inc. 1m @ 2.46% Ni, 641ppm Co, 0.43% Cu, 18ppb Pt+Pd from 183m
- MTRC066: 6m at 1.18% Ni, 480ppm Co, 0.11% Cu, 46ppb Pt+Pd from 94m



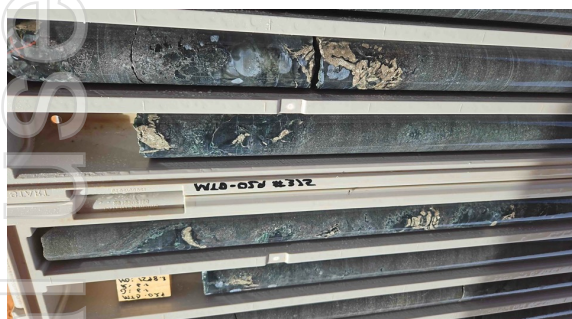
GEOCHEMICAL TRENDS UNLOCKING ARCHITECTURE

HIGHLY PROSPECTIVE BASAL ZONE

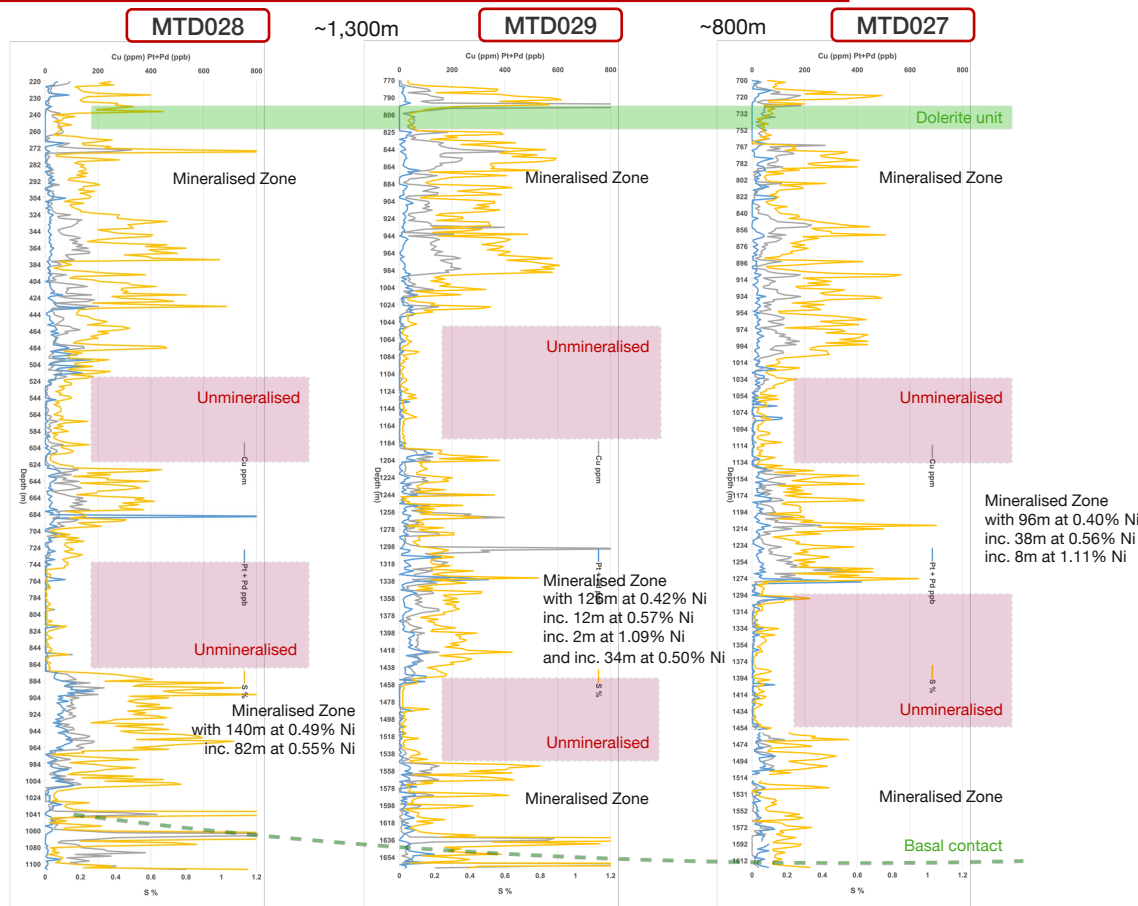
- 91 occurrences of high-grade sulphide across 13 diamond holes over ~4km² area



Example of structural vein sulphide (MTD027)



Example of sulphide melt pockets (MTD029 EIS3)



WHAT LIES AT DEPTH WITHIN THIS EXTENSIVE SULPHIDE SYSTEM?

THERE'S A MONSTER HIDING SOMEWHERE

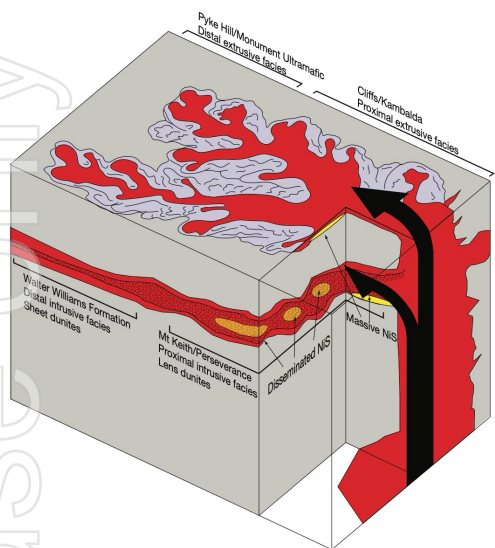


FIG. 4. Schematic relationship between the intrusive and extrusive magmatic systems in the Agnew-Wiluna greenstone belt. Notably significant Ni-Cu-(PGE) mineralization is thought to be spatially and genetically associated with proximal settings (e.g., Kambalda in the Kalgoorlie terrane or Cliffs, Mount Keith, and Perseverance in the Agnew-Wiluna greenstone belt) rather than distal facies (e.g., Pike Hill in the Abitibi greenstone belt; Arndt et al., 2008, the Monument ultramafic unit in the Agnew-Wiluna greenstone belt, or the Walter Williams Formation in the Kalgoorlie terrane).

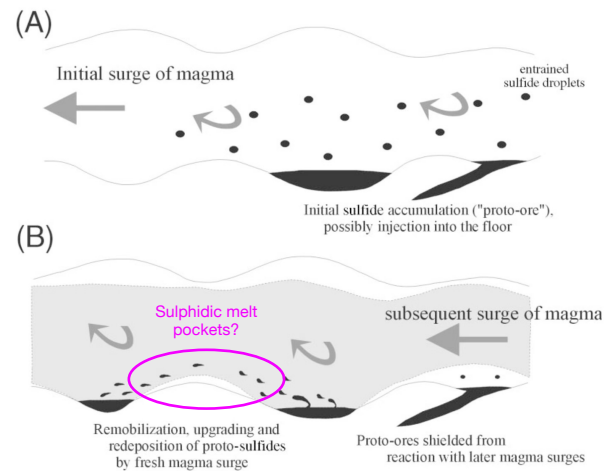
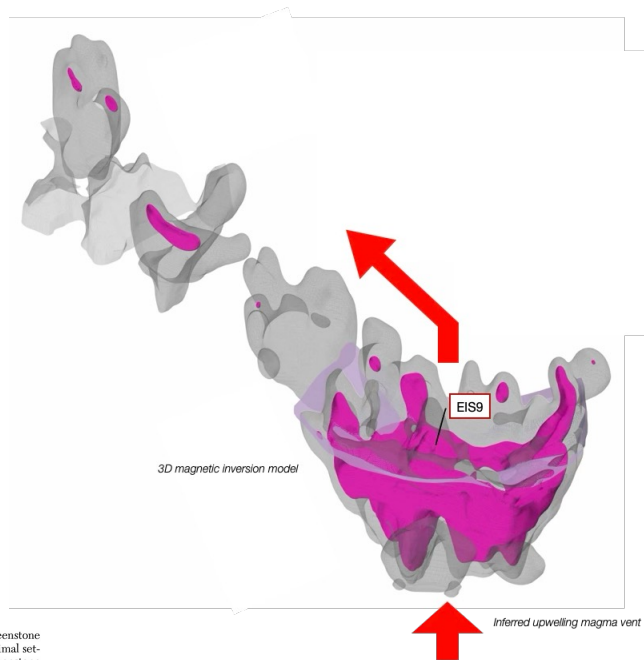


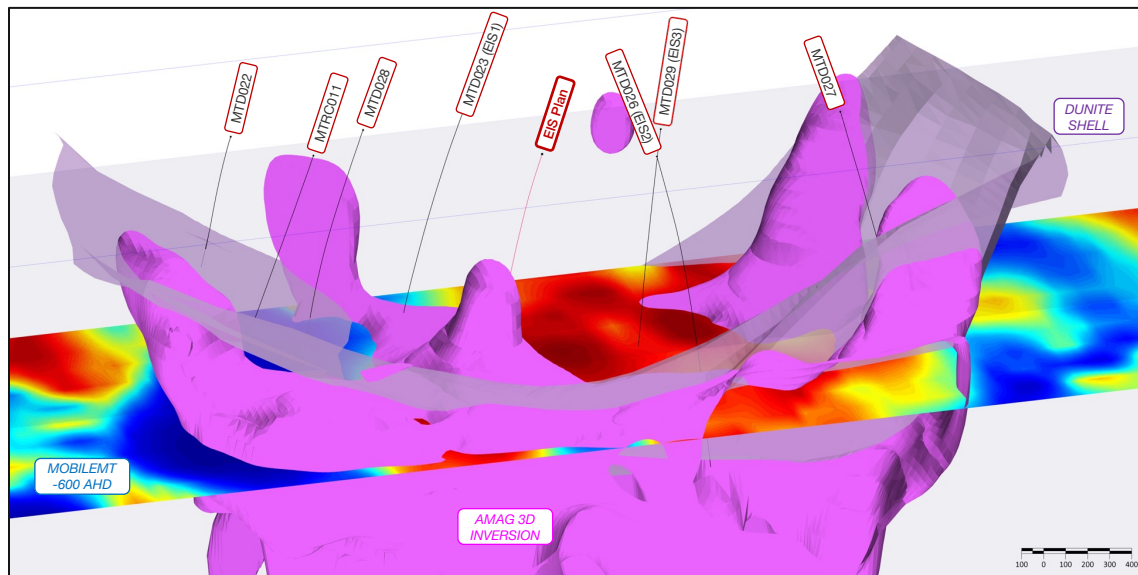
FIG. 3. Schematic diagram illustrating the continued flow of magma through an idealized conduit. A. Initial surge of magma carries entrained sulfide droplets, which may be deposited in widened parts of the conduit to form the "proto-ore". In places, sulfide melt may inject into the floor. B. Continued surges of undepleted magma stir up the previously accumulated sulfide melt, upgrading it in Cu, Ni and PGE, and reprecipitating it downstream in the conduit. Proto-ores that injected into the floor may remain shielded from reaction and upgrading in metal content.

CO-FUNDED EIS DRILLING TO TEST THE DEPTHS OF THE SYSTEM

ACTIVE BASAL ZONE SHOWING CONDUCTIVE MOBILEMT ANOMALY

- Basal sequence intersected over ~2km – significant extent of prospective basal contact
- “Cloud” sulphide and frequency of sulphidic melt pockets potentially vectoring towards sulphide enriched keel and/or feeder vent:

- MTD023: 88m at 0.44% Ni, 151ppm Co from 1,212m
- MTD027: 96m at 0.40% Ni, 161ppm Co from 1,208m
inc. 38m at 0.56% Ni, 159ppm Co from 1,262m
inc. 8m at 1.11% Ni, 181ppm Co from 1,270m
- MTD028: 140m at 0.49% Ni, 161ppm Co from 874m
inc. 82m at 0.55% Ni, 173ppm Co from 886m
- MTD029: 126m at 0.42% Ni, 153ppm Co from 1,326m
inc. 12m at 0.57%, 181ppm Co from 1,326m
that inc. 2m at 1.09% Ni, 242ppm Co from 1,334m
and inc. 34m at 0.50% Ni, 160ppm Co from 1,416m
- Current hole EIS9 tests coincident magnetic high feature and MobileMT anomaly between MTD028 and MTD029 (EIS3)



MULTIPLE DRIVERS OF COMPANY SUCCESS OVER NEXT 6-12 MONTHS

PHASE 4 DRILLING PROGRAM - RESOURCE EXTENSION, INFILL AND HIGH-GRADE TARGETS

1. MT KEITH-STYLE OPEN PITABLE DISSEMINATED SULPHIDE RESOURCE – BACKSTOPS COMPANY VALUE

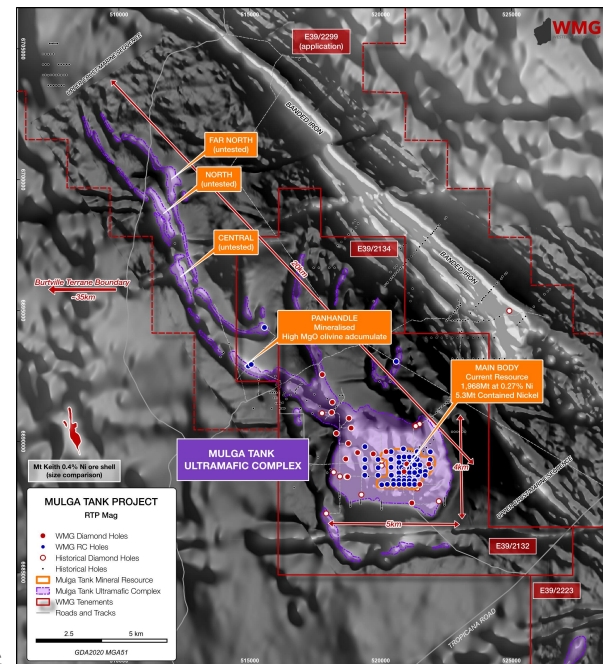
- Resource expansion: RC holes to the south of current resource
- Resource infill: RC and diamond holes between Indicated zones and within current resource
- Resource upgrade
- Ongoing metallurgical test work
- Initial Scoping Study

2. PERSEVERANCE-STYLE HIGH-GRADE TARGET AT DEPTH WITHIN THE MAIN INTRUSION

- Deep diamond hole EIS9 with \$220,000 EIS grant
- “Western Press”: diamond tails targeting basal contact near MTD028
- DHEM and geochemical assays
- Vector towards high-grade horizon at depth

3. KAMBALDA-STYLE KOMATIITE CHANNELS ALONG THE BELT

- MLEM survey of *Panhandle* area
- Two outstanding EIS grants totalling \$400,000 for 1 x deep diamond, 2 x RC with diamond tail and 4 x RC
- Drill test targets within highly fertile mineralised komatiite channel system



EXCITING DISCOVERY OPPORTUNITY

EXPLORATION PHILOSOPHY

- We believe multiple significant nickel deposits will be found at Mulga Tank
- We strive to do high-quality technical exploration work
- We are frugal to maximise exploration spend and minimise equity dilution
- We are per share driven – at the end value created will be divided by shares outstanding

FOR FURTHER INFORMATION PLEASE CONTACT:

Dr Caedmon Marriott
Managing Director
Western Mines Group Ltd

Email: contact@westernmines.com.au

Tel: +61 475 116 798

This announcement has been authorised for release to the ASX by the Board of Western Mines Group Ltd

Refer to Western Mines Group Ltd ASX Announcements for relevant disclosures, no material changes to previously disclosed information

FOLLOW US

@westernmines



Western Mines Group



ASX: **WMG**

www.westernmines.com.au

APPENDIX 1: MULGA TANK MINERAL RESOURCES ESTIMATE

Ni Cut Off (%)	Category	Tonnes (Mt)	Ni (%)	Co (ppm)	Cu (ppm)	Pt+Pd (ppb)	S (%)	S:Ni
0.16	Indicated	573	0.28	134	105	18	0.29	1.0
	Inferred	1,432	0.27	129	73	17	0.24	0.9
	Total	2,005	0.27	131	82	17	0.25	0.9
0.20	Indicated	565	0.28	134	104	18	0.29	1.0
	Inferred	1,403	0.27	129	73	17	0.24	0.9
	Total	1,968	0.27	131	82	17	0.25	0.9
0.24	Indicated	501	0.28	134	104	18	0.28	1.0
	Inferred	1,190	0.28	130	72	17	0.23	0.8
	Total	1,692	0.28	131	82	16	0.24	0.9
0.28	Indicated	249	0.30	139	120	19	0.29	0.9
	Inferred	443	0.30	134	83	17	0.25	0.8
	Total	691	0.30	136	96	18	0.26	0.9
0.32	Indicated	44	0.34	158	229	28	0.40	1.2
	Inferred	60	0.33	146	112	22	0.34	1.0
	Total	103	0.33	151	161	25	0.37	1.1

Ni Cut Off (%)	Category	Contained Ni (Mt)	Contained Co (kt)	Contained Cu (kt)	Contained Pt+Pd (koz)
0.16	Indicated	1.6	77	60	332
	Inferred	3.8	185	105	766
	Total	5.4	262	165	1,098
0.20	Indicated	1.6	76	59	327
	Inferred	3.8	181	102	748
	Total	5.3	257	161	1,075
0.24	Indicated	1.4	67	52	284
	Inferred	3.3	154	86	614
	Total	4.7	221	138	898
0.28	Indicated	0.8	35	30	151
	Inferred	1.3	59	37	244
	Total	2.1	94	66	395
0.32	Indicated	0.1	7	10	40
	Inferred	0.2	9	7	42
	Total	0.3	16	17	82

ASX, Mulga Tank Mineral Resources Over 5Mt Contained Nickel, 10 April 2025

Refer to Western Mines Group Ltd ASX Announcements for relevant disclosures, no material changes to previously disclosed information

APPENDIX 2: AUSTRALIAN NICKEL SULPHIDE DEPOSITS

Deposit	Measured			Indicated			Inferred			Total			Source
	Tonnes (Mt)	Ni (%)	Contained Ni (Kt)	Tonnes (Mt)	Ni (%)	Contained Ni (Kt)	Tonnes (Mt)	Ni (%)	Contained Ni (Kt)	Tonnes (Mt)	Ni (%)	Contained Ni (Kt)	
Mulga Tank	-	-	-	565.0	0.28	1,600.0	1,403.0	0.27	3,800.0	1,968.0	0.27	5,300.0	Mulga Tank March 2025 Mineral Resource
Yakabindie	148.0	0.61	902.8	88.0	0.61	536.8	148.0	0.61	902.8	338.0	0.61	2,061.8	BHP Annual Reports 2023 and 2024
Leinster Total	21.1	1.74	366.3	95.2	0.87	828.8	57.9	0.79	454.6	174.8	0.93	1,633.2	BHP Annual Reports 2023 and 2024
Honeymoon Well Total	10.1	0.92	92.6	156.8	0.66	1,041.4	10.6	0.77	81.0	176.4	0.69	1,210.4	BHP Annual Reports 2023 and 2024
Jericho/West Jordan	-	-	-	19.0	0.57	108.3	80.0	0.55	440.0	98.0	0.56	548.8	BHP Annual Reports 2023 and 2024
Nebo-Babel	91.0	0.31	282.1	239.0	0.29	698.6	59.1	0.32	189.5	390.0	0.31	1,190.0	BHP Annual Reports 2023 and 2024
Mt Keith	132.0	0.54	712.8	67.0	0.52	348.4	24.0	0.52	124.8	224.0	0.53	1,187.2	BHP Annual Reports 2023 and 2024
Gonneville	2.9	0.21	6.1	400.0	0.14	600.0	250.0	0.14	360.0	660.0	0.15	960.0	Chalice Mining Annual Report 2024
Cosmos (2023)	9.5	0.87	82.7	25.3	1.36	344.2	5.1	1.58	79.7	39.8	1.27	506.7	IGO Annual Report 2023
Avebury	-	-	-	8.7	1.00	87.0	20.7	0.80	165.6	29.3	0.90	263.7	Mallee Resources Annual Report 2022
Fisher East	-	-	-	5.2	1.99	103.5	7.9	1.69	133.5	13.1	1.81	237.0	Kinterra Capital announcement 26 February 2024
Savannah (2023)	2.9	1.40	40.6	6.8	1.67	113.9	4.2	1.37	57.0	13.9	1.52	211.2	Panoramic Resources Annual Report 2023
Black Swan	0.8	0.78	7.0	15.1	0.73	111.0	10.4	0.69	71.0	26.3	0.72	189.0	Poseidon Nickel Annual Report 2023

*Australian nickel sulphide deposits with total measured, indicated and inferred resources of contained nickel >100Kt Ni
Numbers may not add up due to rounding*