



ASX ANNOUNCEMENT

28 November 2025

Chairman's Address to AGM

Dear fellow directors, staff and shareholders,

Welcome to the 2025 Rumble AGM, my first AGM as Chairman of Rumble, although I have been on the board since July 2022.

As you are aware it has been a very busy twelve months with our focus shifting to the Western Queen gold project given the surge in the gold price.

The exploration team has undertaken a number of drill programs at Western Queen throughout FY2025 which culminated in two upgrades in the gold mineral resource estimates and the discovery and announcement of a maiden high-grade tungsten resource.

The first gold resource upgrade was a 76% increase in contained gold from 163,000 ounces to 286,600 ounces in October 2024¹. This was followed by a second upgrade in July 2025 to 370,000 ounces at a 53% higher average grade of 3.1 grams per tonne gold².

Our exploration team also identified high-grade tungsten as scheelite mineralisation in the drill core, including an intercept of 4 metres at 4.58% tungsten trioxide (WO₃) and 0.72 grams per tonne gold from 174.9m in WQDD013³. Re-assaying of historical pulps and drill core culminated in us reporting a maiden tungsten resource of 13,200 tonnes WO₃ at an average grade of 0.31% WO₃⁴.

Importantly, we are back drilling again at Western Queen and have drilled over 5,000 metres. We are eagerly awaiting assays results.

In addition to the resource drilling, we have also been undertaking open pit and underground mining studies to determine the most suitable pathway to get Western Queen into production, based on selling or toll milling our ore at one of the gold processing facilities in the vicinity of Western Queen. We recently signed an MoU with Gylden Resources to potentially toll our Western Queen ore through their 2Mtpa plant at Kirkalocka which is about 170km southeast of Western Queen.

The Scoping Study on the Western Queen underground that was released earlier this week demonstrates we can mine Western Queen South from underground, process the ore at the Kirkalocka plant and make a very robust margin at the current spot gold price⁵. Peter Harold will run through the outcomes of the Scoping Study in detail during his presentation after the conclusion of the formal business of this meeting. There is significant potential to increase the mine life at Western Queen by converting more Inferred resources to Indicated and mining the Western Queen Central deposit from underground in addition to Western Queen South. The current drill

¹ Refer Company release dated 15 October 2024

² Refer Company release date 23 July 2025

³ Refer to Company release dated 6 August 2024

⁴ Refer to Company release dated 11 August 2025

⁵ Refer to Company released dated 27 November 2025

For personal use only



program is designed to both extend the resources down plunge and convert more resources to the Indicated category.

Given the success of the recent drill programs and the strong gold price environment, which is forecast to continue, our strategy with Western Queen is as follows:

- continue exploring to grow the gold and tungsten resources;
- commence gold production from underground as soon as possible; and
- study the tungsten mineralisation to determine if there is a pathway to generate a tungsten revenue stream in addition to the planned gold revenue stream.

Our overarching goal is to become a self-funded gold producer that can utilise the free cashflow generated from our operations to deliver further discoveries and grow our resources, thus rewarding our loyal shareholders with share price appreciation and a potential dividend stream.

We will also continue to utilise our in-house exploration expertise to find new orebodies that may ultimately be turned into operating mines.

While our primary focus is on gold and tungsten, we have undertaken an internal scoping study on our large Earahedy zinc, lead and silver project to determine the best way forward. The study has confirmed we will need marginally higher long-term zinc and lead prices than the current spot prices for Earahedy to be developed. While the copper price has rallied strongly recently both zinc and lead prices remain largely subdued, however as the world's consumption of metals increases we believe all base metal prices will rise and new projects will be developed to meet the increased demand anticipated. We will continue to optimise the Earahedy project with additional metallurgical testwork planned for CY2026.

To allow us to fund our exploration and miner pre-development activities we completed a number of successful capital raising during the year and I thank the existing shareholders and new shareholders for supporting those raisings. We welcomed new significant shareholders during the year including Tribeca Investment Partners.

I would like to take this opportunity to thank the board, executives and staff and all our contractors for their efforts this year.

To our loyal shareholders and new shareholders, thank you for your support. We believe we are well placed to leverage off the renewed interest in gold, tungsten and the other metals in our extensive Western Australian portfolio. Next year should be a very good year for Rumble as we move towards gold production and continue exploration to potentially grow our gold and tungsten resources.

Thank you

Geoff Jones
Chairman

For personal use only



RUMBLE
RESOURCES LTD

NEAR TERM

GOLD PRODUCTION

& EXPLORATION UPSIDE

MULTI-COMMODITY

EXPOSURE

Annual General Meeting Presentation
28 November 2025

ASX:RTR

ersonal use only

This presentation has been prepared by Rumble Resources Limited (Rumble or the Company). It contains general information about the Company's activities current as at the date of the presentation. The information is provided in summary form and does not purport to be complete. This presentation is not to be distributed (nor taken to have been distributed) to any persons in any jurisdictions to whom an offer or solicitation to buy shares in the Company would be unlawful. Any recipient of the presentation should observe any such restrictions on the distribution of this presentation and warrants to the Company that the receipt of the presentation is not unlawful. It should not be considered as an offer or invitation to subscribe for or purchase any securities in the Company or as an inducement to make an offer or invitation with respect to those securities. No agreement to subscribe for securities in the Company will be entered into on the basis of this presentation or any information, opinions or conclusions expressed in the course of this presentation. This presentation is not a prospectus, product disclosure document or other offering document under Australian law or under any other law. It has been prepared for information purposes only. This presentation contains general summary information and does not take into account the investment objectives, financial situation and particular needs of any individual investor. It is not financial product advice and investors should obtain their own independent advice from qualified financial advisors having regard to their objectives, financial situation and needs. Rumble nor any of their related bodies corporate is licensed to provide financial product advice.

This presentation and information, opinions or conclusions expressed in the course of this presentation contains forecasts and forward-looking information. Such forecasts, projections and information are not a guarantee of future performance, involve unknown risks and uncertainties. Actual results and developments will almost certainly differ materially from those expressed or implied. There are a number of risks, both specific to Rumble, and of a general nature which may affect the future operating and financial performance of Rumble, and the value of an investment in Rumble including and not limited to title risk, renewal risk, economic conditions, stock market fluctuations, manganese demand and price movements, timing of access to infrastructure, timing of environmental approvals, regulatory risks, operational risks, reliance on key personnel, reserve estimations, native title risks, foreign currency fluctuations, and mining development, construction and commissioning risk.

You should not act or refrain from acting in reliance on this presentation, or any information, opinions or conclusions expressed in the course of this presentation. This presentation does not purport to be all inclusive or to contain all information which its recipients may require in order to make an informed assessment of the prospects of Rumble. You should conduct your own investigation and perform your own analysis in order to satisfy yourself as to the accuracy and completeness of the information, statements and opinions contained in this presentation before making any investment decision. Recipients of this presentation must undertake their own due diligence and make their own assumptions in respect of the information contained in this presentation and should obtain independent professional advice before making any decision based on the information. No representation or warranty, express or implied, is made in relation to the fairness, accuracy or completeness of the information, opinions and conclusions expressed in the course of this presentation. To the maximum extent permitted by law, no representation, warranty or undertaking, express or implied, is made and, to the maximum extent permitted by law, no responsibility or liability is accepted by the Company or any of its officers, employees, agents or consultant or any other person as to the adequacy, accuracy, completeness or reasonableness of the information in this presentation. To the maximum extent permitted by law, no responsibility for any errors or omissions from this presentation whether arising out of negligence or otherwise is accepted. An investment in the shares of the Company is to be considered highly speculative.

The exploration targets or conceptual exploration targets in this presentation or expressed during the course of this presentation are subject to completion of the necessary feasibility studies, permitting and execution of all necessary infrastructure agreements. This presentation and information, opinions or conclusions expressed in the course of this presentation should be read in conjunction with Rumble's other periodic and continuous disclosure announcements lodged with the ASX, which are available on the Rumble website. They involve risk and uncertainties that could cause actual results to differ from estimated results. Forward-looking statements include, but are not limited to, statements concerning the Company's exploration programs, outlook and target sizes. They include statements preceded by words such as "potential", "target", "scheduled", "planned", "estimate", "possible", "future", "prospective" and similar expressions.

COMPETENT PERSON STATEMENT

The Exploration Results referenced in this presentation were first announced by the Company in accordance with ASX Listing Rule 5.7 in its announcements dated 11 August 2025, 23 July 2023, 16 April 2025, 4 April 2025, 17 February 2025, 11 December 2024, 28 November 2024, 15 October 2024, 2 September 2024, 6 August 2024, 16 July 2024, 13 March 2024, 21 February 2024, 14 November 2023, 31 October 2023, 24 October 2023, 5th October 2023, 17 July 2023, 19 April 2023, 14 March 2023, 16 February 2023, 17 November 2022, 3 November 2022, 29 September 2022, 30 August 2022, 23 August 2022, 18 July 2022, 26 May 2022, 9 March 2022, 21 February 2022, 7 February 2022, 31 January 2022, 21 December 2021, 13 December 2021, 18 November 2021, 10 November 2021, 18 October 2021, 8 July 2021, 2 June 2021, 19 April 2021, 23 February 2021, 17 February 2021, 15 February 2021, 3 February 2021, 28 January 2021, 4 November 2020, 6 October 2020, 20 May 2020, 4 May 2020, 24 April 2020, 17 February 2020, 11 February 2020, 23 January 2020, 26 November 2019, 8 November 2019, 21 November 2019, 21 October 2019, 1 October 2019, 23 August 2019, 22 August 2019, 6 August 2019, 11 July 2019, 1 July 2019, 4 April 2019, 12 March 2019, 12 February 2019, 6 February 2019, 17 December 2018, 27 November 2018, 30 August 2018 and 9 August 2018.

The Updated Mineral Resource Estimate (MRE) for the Western Queen Project referenced in this presentation was announced by the Company in accordance with ASX Listing Rule 5.8 on 23 July 2025 the previous MRE for Western Queen was announced 15 October 2024. The Mineral Resource estimate for the Earacheedy Project referenced in this presentation was first announced by the Company in accordance with ASX Listing Rule 5.8 in its announcement dated 19 April 2023. Rumble is not aware of any new information or data that materially affects the information included in the relevant market announcements described above and, in the case of the Mineral Resource estimate, that all material assumptions and technical parameters underpinning the estimate in the relevant market announcement continue to apply and have not materially changed.

VISION AND MISSION

Rumble is an Australian resources company, delivering value and growth through resource discoveries and project development in Western Australia.

Our aim is to provide shareholders with capital growth and dividend streams by identifying and developing mineral assets. Our immediate focus is generating near-term cashflow from Western Queen to internally fund further resource growth and to fund our other exploration projects.

CORPORATE OVERVIEW

~\$0.04

SHARE PRICE (28 Nov 2025)

~1,310M

SHARES ON ISSUE

ASX:RTR

TICKER

~\$51M

MARKET CAP

~\$7.5M

CASH & EQUIVALENTS³

~\$43.5M

ENTERPRISE VALUE

3.0M

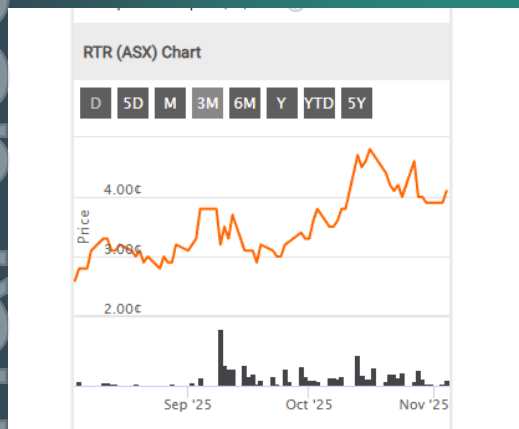
OPTIONS¹

25.0M

PERFORMANCE
OPTIONS & RIGHTS²

Notes:

- 3.0 million 20c & 58c Options (Various Expiry)
- 5.0 million Performance Options Vesting \$1 & \$2 (unvested), 1.5 million Options @ 20c & 10.0M Options at 15.4c & 21.5c & 10.0M Performance Rights with various hurdles As at 28 Nov 2025
- As at 28 Nov 2025



SHAREHOLDER COMPOSITION

BOARD AND MANAGEMENT ~6%

TOP 20 ~33%

BOARD OF DIRECTORS

PETER HAROLD
Managing Director & CEO

PETER VENN
Technical Director

GEOFF JONES
Non-Executive Chairman

MICHAEL SMITH
Non-Executive Director

MATTHEW BANKS
Non-Executive Director

MANAGEMENT

BRETT KEILLOR
Technical Consultant

SIMON DAVIES
Exploration Manager

TREVOR HART
Chief Financial Officer
& Joint Company Secretary



RESEARCH

MICHAEL BENTLEY



WHY INVEST IN RUMBLE?

WESTERN QUEEN – Gold & Tungsten

- ✓ **Near term cashflow from high-grade gold deposits**
- ✓ **Resource growth already & potential to increase**
 - Oct 2024 - from 163koz to 287koz Au¹
 - July 2025 - from 287koz to **370koz Au²**
 - **Nov 2025 – WQ South Scoping Study released**
 - Targeting further significant resource growth with current drill program (up to 20,000m of diamond)
- ✓ **Tungsten**
 - Maiden resource of 13.2kt WO₃³
 - Huge resource growth potential
 - Potential near term co-product revenue stream

Earaheedy - Base Metals & Silver

- ✓ **Globally significant Zn-Pb-Ag discovery**
- ✓ **Maiden JORC MRE 2.2Mt Zn, 0.7Mt Pb & 12.6Moz Ag⁴**
 - Looking for a significant development partner



¹. Refer Company ASX release dated 15 October 2024

². Refer Company ASX Release dated 23 July 2025

³. Refer Company ASX Release dated 8 August 2025

⁴. Refer Company ASX release dated 19 April 2023

Gold Resources upgraded to **370kcozs** @**3.1g/t Au**¹

Maiden tungsten Resources **13.2kt WO₃**²

Inferred Resource containing **2.2Mt Zn**
0.7Mt Pb
12.6Moz Ag³

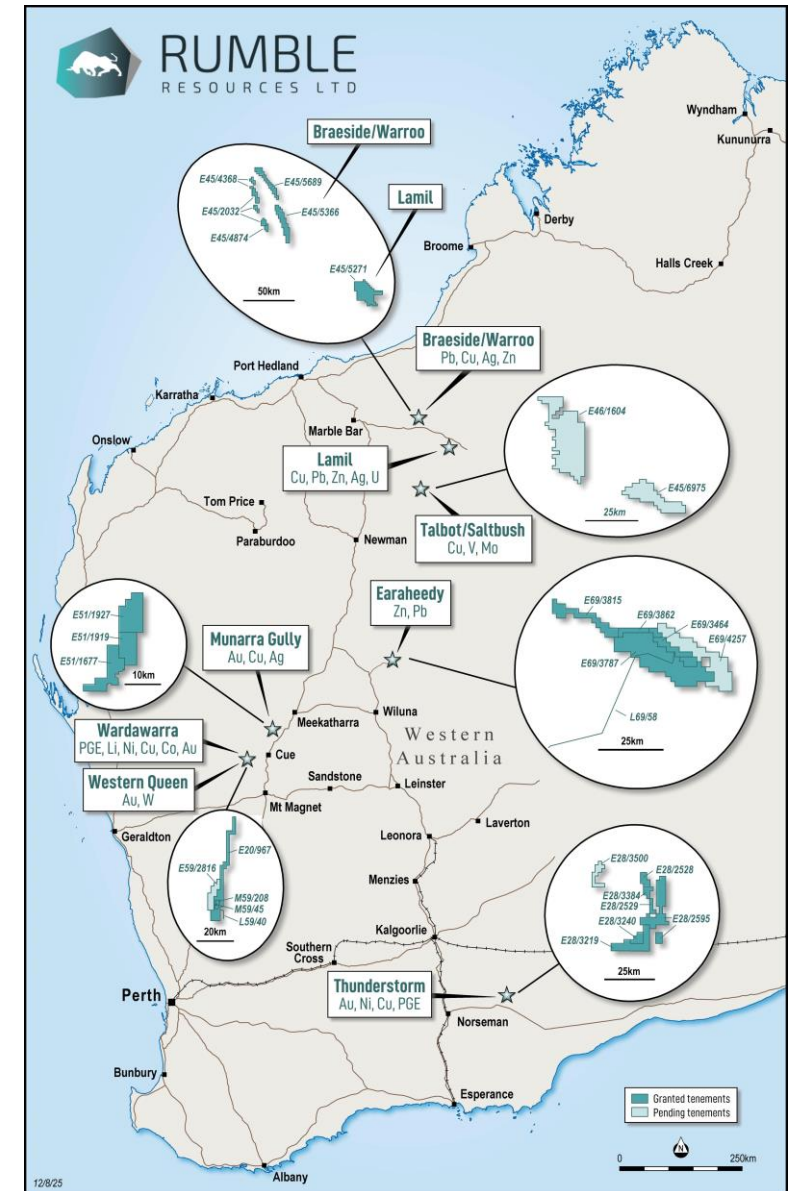
WESTERN QUEEN – NEAR TERM GOLD PRODUCTION & DISCOVERY POTENTIAL

- Recent significant increase in gold Resources ounces and grade
- Potential to quickly grow the gold resources with extensional drilling
- Near-term gold production option, scoping study out
- Maiden tungsten resource reported with potential to grow resources and add a tungsten revenue stream

EARAHEEDY – LOOKING FOR A DEVELOPMENT PARTNER

- Potential large-scale, low-cost open pit mining
- Metallurgical testwork confirms +61% Zn+Pb concentrate
- Less than 30% of the 70km host Unconformity Unit tested
- One of the largest zinc sulphide discoveries over the last decade

OTHER PROJECTS – FRASER RANGE (AU), MUNARRA GULLY (CU/AU) & LAMIL JV (CU)

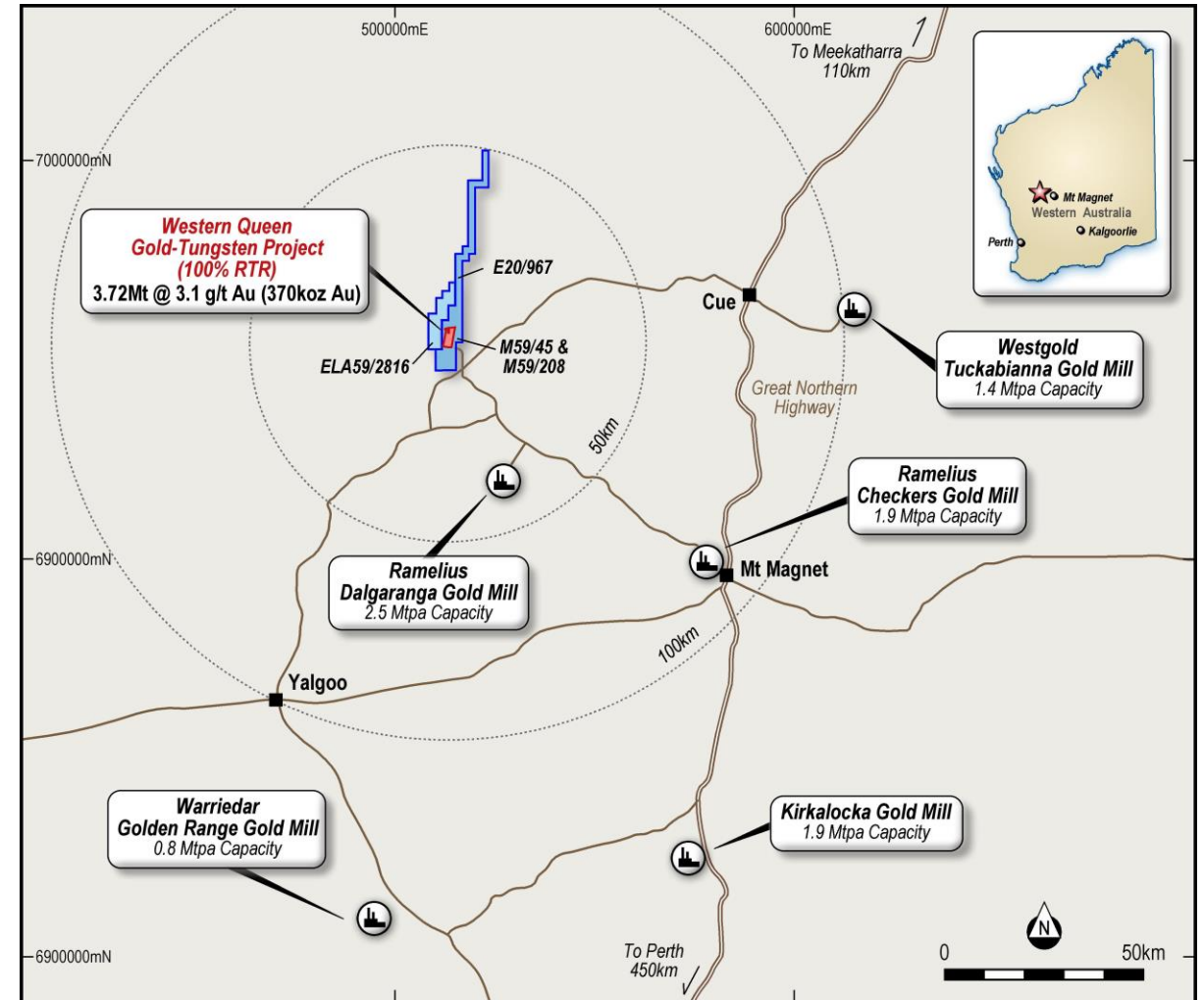


¹ refer Company's ASX Announcement 23 July 2025

² refer Company's ASX announcement 11 Aug 2025

³ refer Company's ASX announcement 19 April 2023

- **Mineral Resource Estimate (MRE) now 3.72Mt @ 3.1g/t Au for 370,000oz¹ a 53% grade increase**
- **Historical production – 880kt @ 7.6g/t Au for 215koz**
- **Near-term production – WQ South Scoping Study confirms quick start, very low capex, extremely robust economics and huge upside**
- **Well located – 200km radius of 5 gold plants, on granted mining leases, MoU with Gylden to process at their Kirkalocka plant**
- **Geology – The Western Queen deposits are associated with a major orogenic shear zone that remains largely untested along strike and at depth**
- **Possible Analogy – Spartan/Ramelius Never Never & Pepper lodes which are 7.76Mt @ 9.32g/t Au for 2.32Moz² to a vertical depth of 1,000m**
- **Tungsten – Maiden tungsten resource 13.2kt WO₃³**

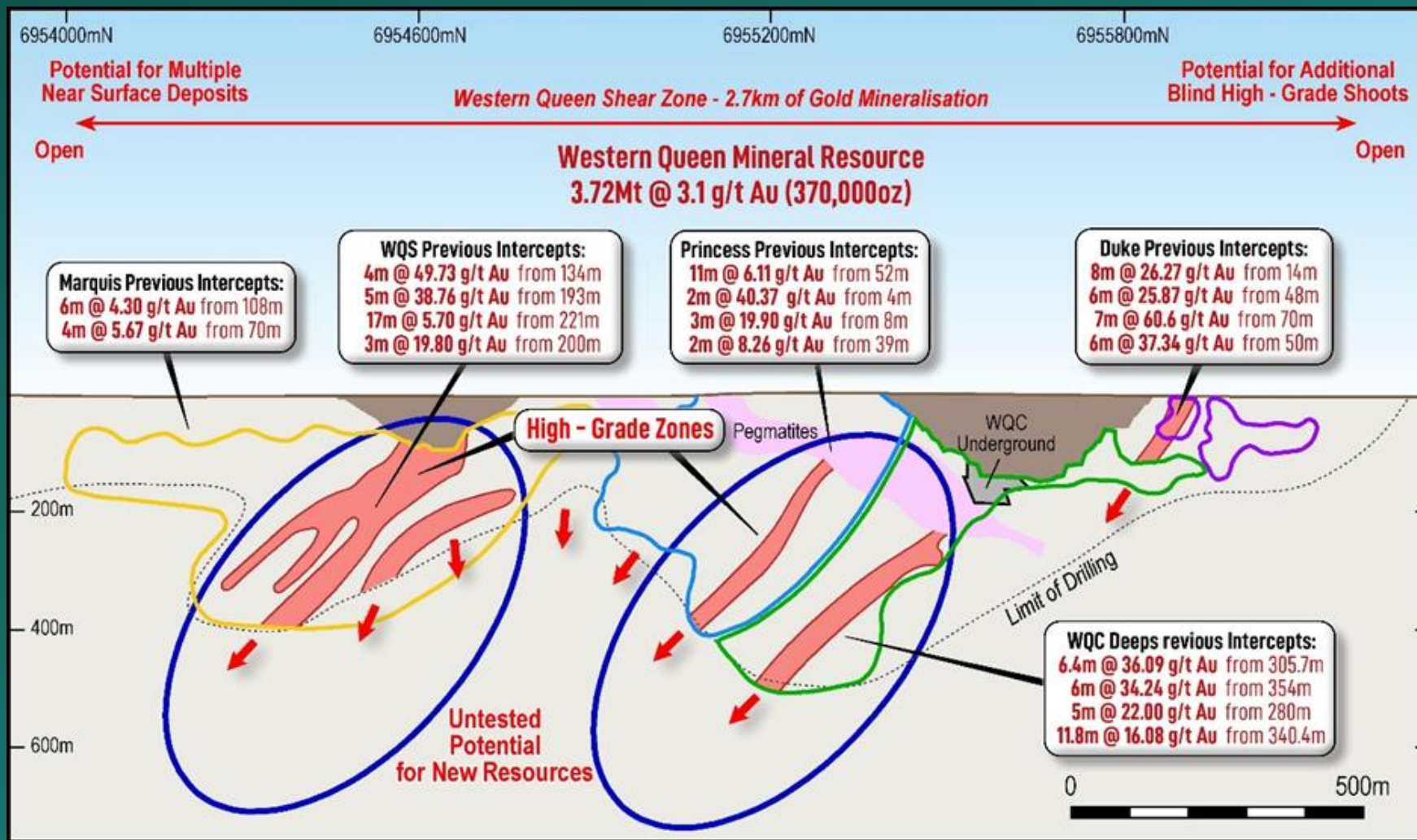


Location Plan of the Western Queen Gold Project

¹ Refer Company ASX release dated 23 July 2025

² Refer Ramelius Resources ASX release Noosa Mining Conference Presentation 24 July 2025 page 38

³ Refer Company Release dated 8 August 2025



Western Queen Gold Deposit Longitudinal Section – Highlighting Previous Production, Resources and Potential New Resource Areas

ersonal use only

Western Queen MRE 23 July 2025¹

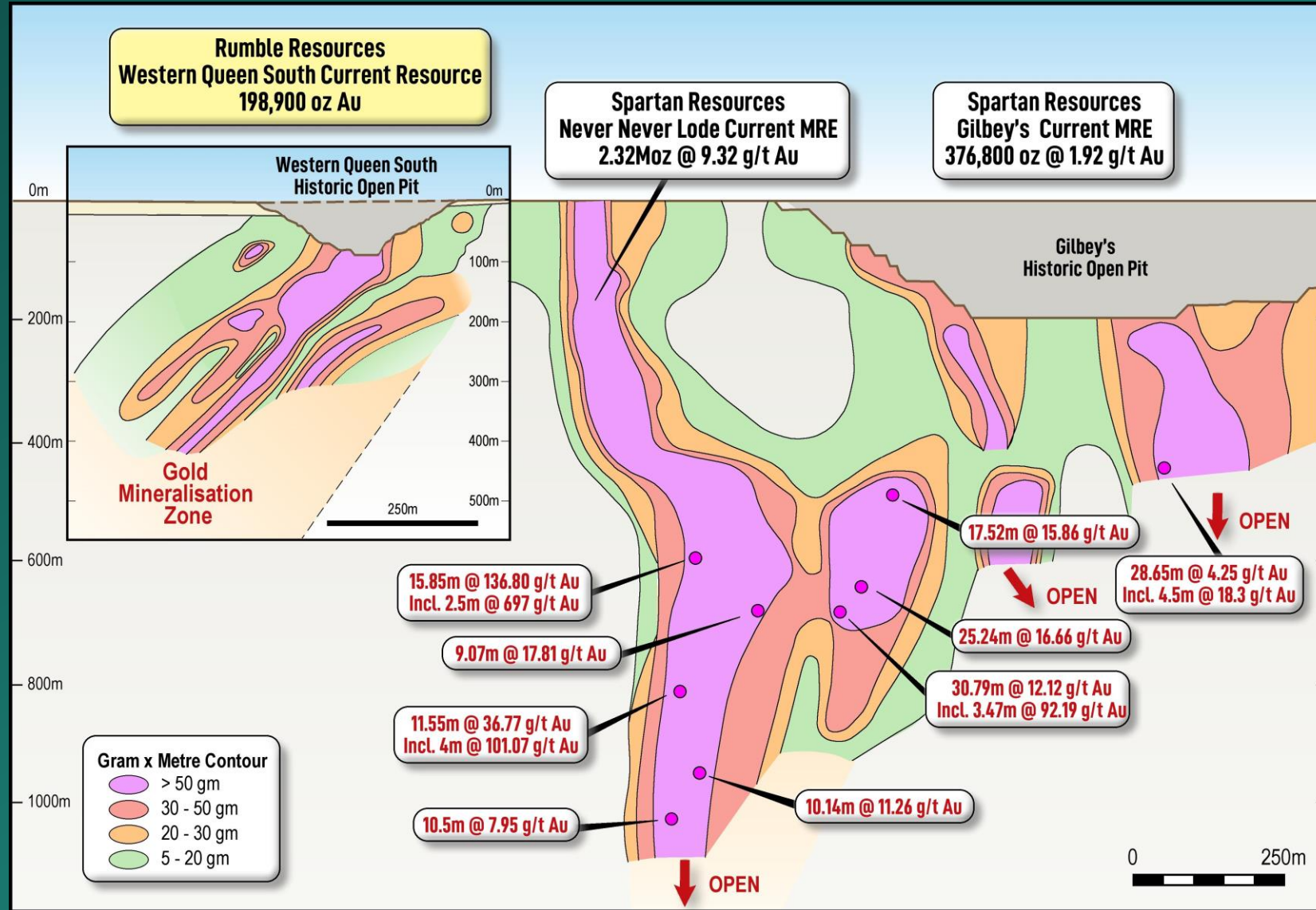
Prospect	Indicated			Inferred			Total		
	Tonnage kt	Au g/t	Au Oz	Tonnage kt	Au g/t	Au Oz	Tonnage kt	Au g/t	Au Oz
Cranes				70	1.4	3,300	70	1.4	3,300
Duke	30	7.2	6,900	4	6.4	800	34	7.1	7,700
WQC	250	7.2	56,600	560	3.8	67,300	800	4.8	124,000
Princess	100	1.9	5,900	380	2.5	30,300	480	2.3	36,200
WQS	830	3.0	78,600	1,490	2.5	120,200	2,320	2.7	198,900
Total	1,210	3.8	148,000	2,510	2.8	222,000	3,720	3.1	370,000

Notes: Totals may differ due to rounding, Mineral Resources reported on a dry in-situ basis.

- 53% increase in average grade to 3.1g/t Au
- 29% increase in global ozs
- Low discovery costs

¹ refer Company's ASX Announcement 23 July 2025

WESTERN QUEEN – NEVER NEVER COMPARISON



Western Queen South comparison to Spartan/Ramelius Never Never lode (to scale)

ersonal use only

WQ South Next Phases

1. Extensional/Growth drilling

2. Infill - Inferred to Indicated

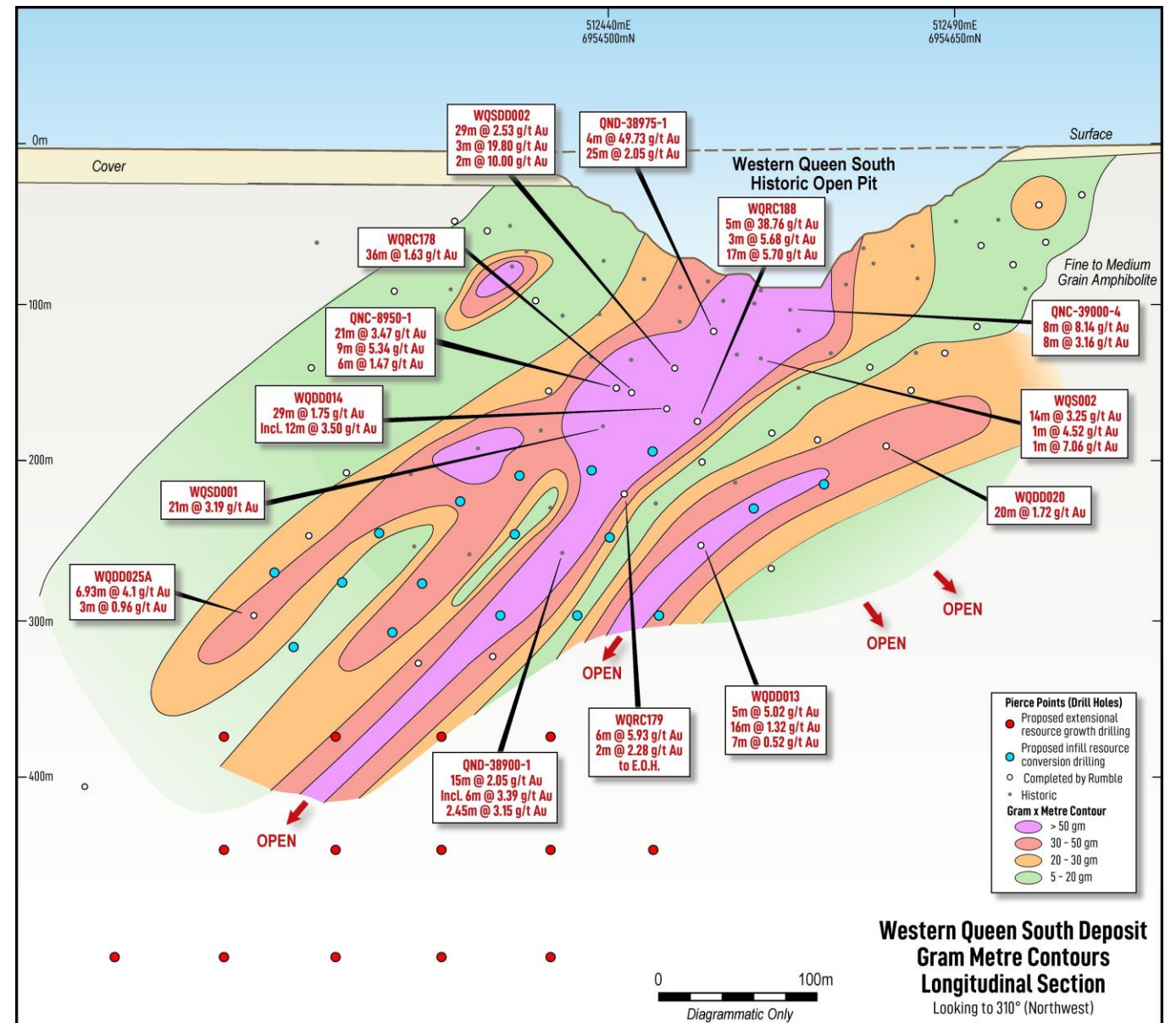
- Red holes = 60x60m extensional/Growth
- Proposed extensional drilling aims to extend mineralisation ~250m down plunge of previous drilling
- Blue holes = 40x40m infill drilling

Previous High-grade RC/DDH Drill Intercepts

Western Queen South Deposit^{1,2,3}

- 5m @ 38.76g/t Au from 193m, and
- 17m @ 5.70g/t Au from 221m (WQRC 188)
- 4m @ 49.73 g/t Au from 134m (QND-38975-1)
- 5m @ 17.69 g/t Au from 83m (QNC-8900-1)
- 21m @ 3.47 g/t Au from 141m, and
- 9m @ 5.34g/t Au from 168m (QNC 8950-1)
- 6.93m @ 4.10g/t Au from 362m (WQDD025A)

1. Refer Company ASX release dated 3 February 2021
 2. Refer Company ASX Release dated 4 November 2019
 3. Refer Company ASX Release dated 4 June 2025



WQ Central Next Phases

1. Extensional/Growth drilling

2. Infill - Inferred to Indicated

- Red holes = 60x60m Extensional/Growth
- Proposed Extensional/Growth drilling aims to extend mineralisation ~200m down plunge of previous drilling
- Blue holes = 40x40m infill drilling

Previous High-grade RC/DDH Drill Intercepts

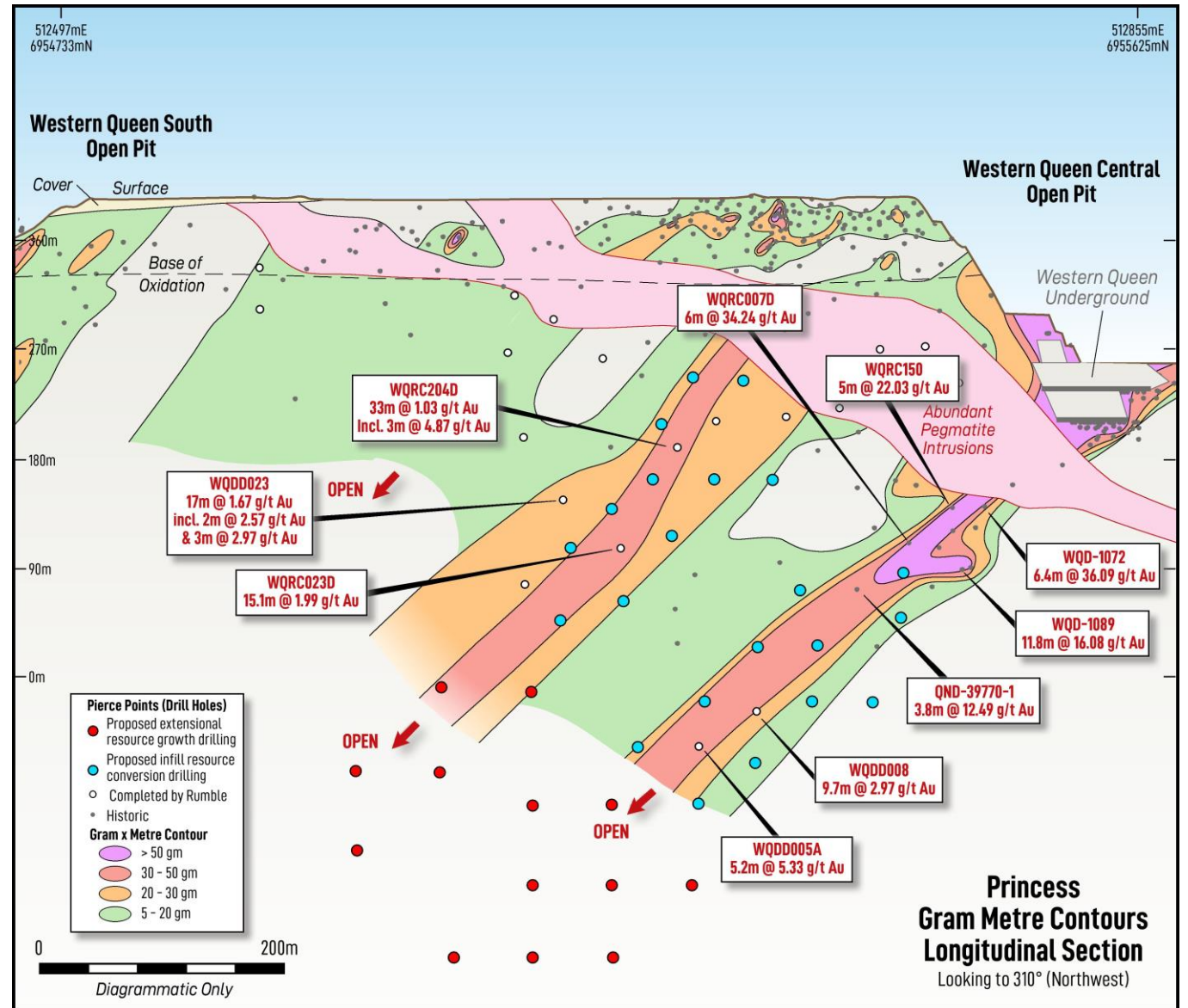
Western Queen Central – Down Plunge^{1,2,3}

- 6.4m @ 36.09 g/t Au from 305.7m (WQD-1072)
- 6m @ 34.24 g/t Au from 354m (WQRC007D)
- 5m @ 22.03 g/t Au from 280m (WQRC150)
- 11.8m @ 16.08 g/t Au from 340.4m (WQD-1089)

¹ Refer Company ASX release dated 18 February 2020

² Refer Company ASX Release dated 4 November 2020

³ Refer Company ASX Release dated 9 June 2020



Objectives of current 20,000m diamond program

- **Discover more Gold Resources** - targeting high-grade, down-plunge extensions to the WQ South and Central, testing the Never Never analogy
- **Upgrade Inferred to Indicated Resources** - A small portion of the drilling will infill the existing Western Queen South MRE which currently stands at 2.32Mt @ 2.66g/t Au for 198,900 oz, with the aim of converting existing Inferred to Indicated Resources for the mine plan
- **Discover more Tungsten Resources** – discover more high-grade tungsten lodes, which are spatially adjacent, and sub-parallel to, the high-grade gold lodes
- **Geotechnical review** – 2 holes to understand the geotechnical conditions in the area where the underground portal and decline is proposed
- **Gold recovery confirmation** – use selected holes to provide samples for a metallurgical testwork program across both the Western Queen South and Central deposits to validate the previously achieved high gold recoveries of +93%



DDH1 Drilling rig on site at Western Queen South

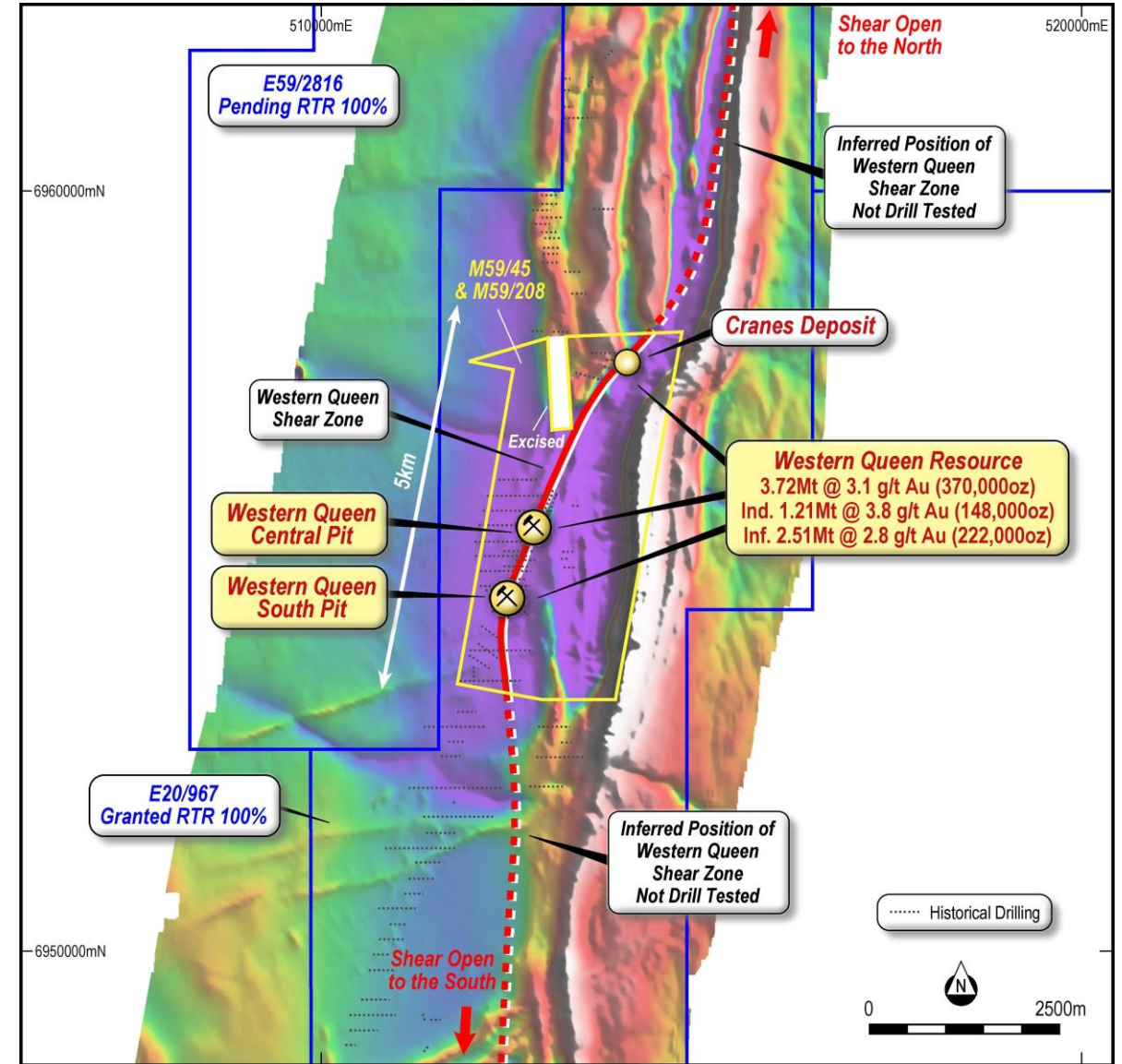
Gold Targets

□ On Mining Leases

- **Over the 2km strike** between the Duke and Cranes deposits
 - Limited RAB drilling with an average end of hole depth of less than 20m and only three RC holes
 - Limited historical drilling at Cranes returned intercepts of **14m @ 4.87 g/t Au** from surface and **11m @ 1.85 g/t Au** from surface¹

□ Within District

- The regionally significant **Western Queen Shear Zone** has been reinterpreted using detailed airborne magnetics flown by Rumble and **remains untested**



Western Queen Shear Zone Prospectivity over TMI Airborne Magnetics

¹ Refer Company ASX release dated 4 November 2019

Key finding of Western Queen South Study¹

- Production Target – 617kt @ 2.95g/t for 58.5koz Au
- Free Cashflow - \$133M
- NPV - \$112 at 8% discount rate
- IRR – 370%
- AISC – A\$2,970/oz
- Upfront capex – circa \$10M
- Short start up – 6 months from cutting portal to first ore

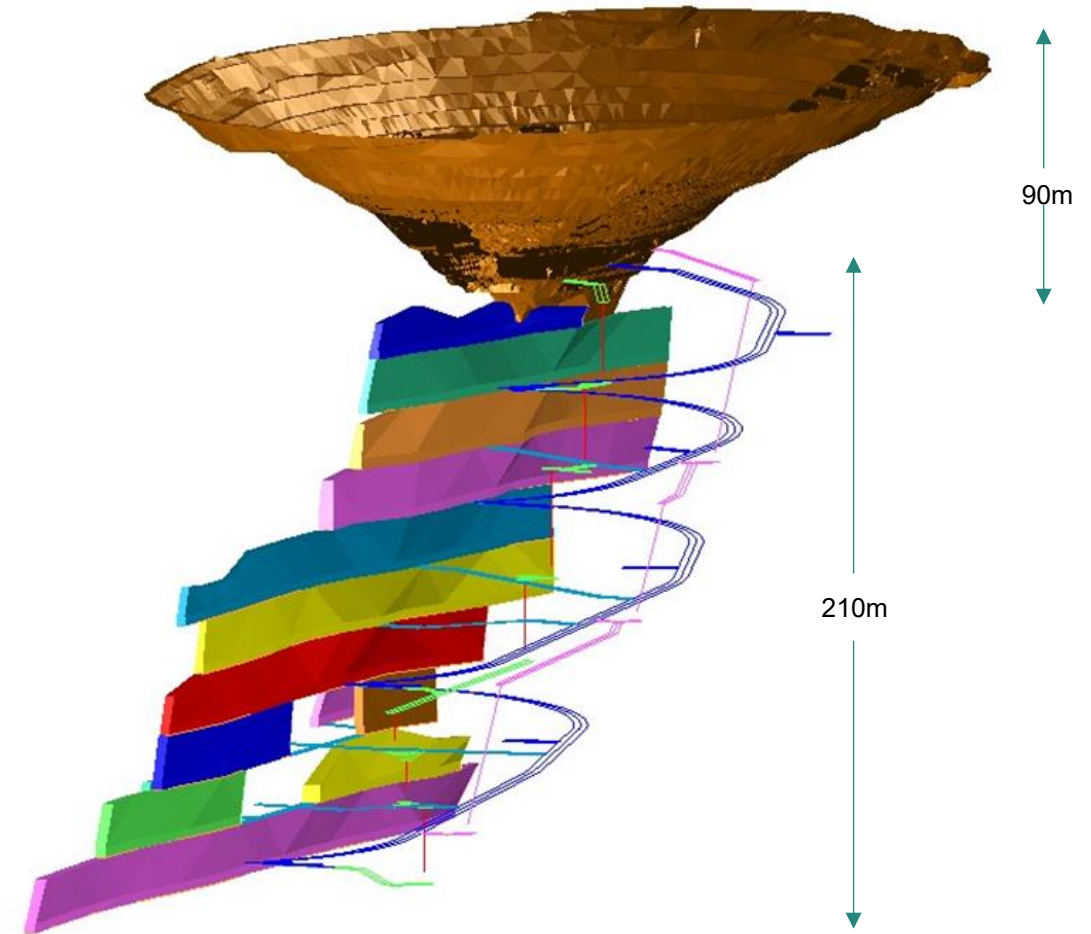
Key Assumptions

- Gold price assumption – A\$5,540/oz (spot A\$6,400/oz)
- Processing – toll treat ore at Kirkalocka, 176km by road
- Metallurgical recovery – 94% (based on previous production & testwork)

Important points

- Simple mine design - steep dip allows uphole stoping
- Small portion of resource - only **29% of WQS Resources** included in study & **none of WQ Central**
- 66% Indicated / 34% Inferred Resources in the mining inventory

¹ Refer Company ASX release dated 27 November 2025



**Western Queen South underground mine design
for 617kt @ 2.95glt for 58.5koz**

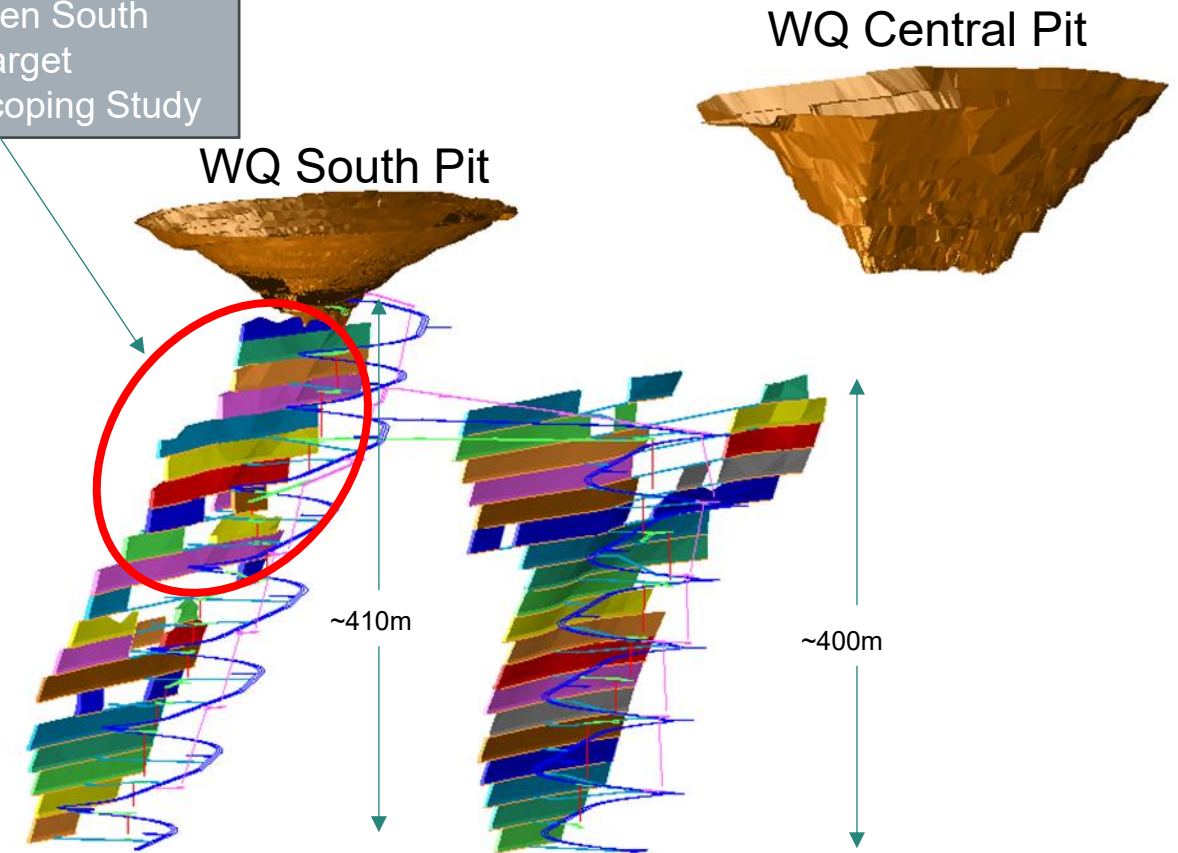
Next Steps

- Obtain all necessary approvals and permits
- Execute ore tolling or ore sale agreement
- Secure project financing/make FID
- Convert more Inferred Resources into Indicated
- Bring WQ Central into mine plan
- **Production – aiming for early 2027**

Upside

- Mine life extensions from:
 - Infill drilling
 - Down plunge extensions to WQ South and Central
 - Discovery of new mineralisation proximal to existing resources
 - New discoveries along the WQ Shear Zone
- Add tungsten revenue stream

Western Queen South
Production Target
27 Nov 25 Scoping Study



Conceptual underground mine design to mine bulk of current WQ South and Central Resources

Significant Intersections^{1 & 2}

WQDD013 intersections:

- **4m @ 4.58% WO₃** & 0.72g/t Au from 174.85m including
- **2.05m @ 8.71% WO₃** & 1.38g/t from 176.85m and
- **0.65m @ 18.35% WO₃**, & 2.97g/t Au from 176.85m

MXDD003:

- **11.5m @ 1.46% WO₃**

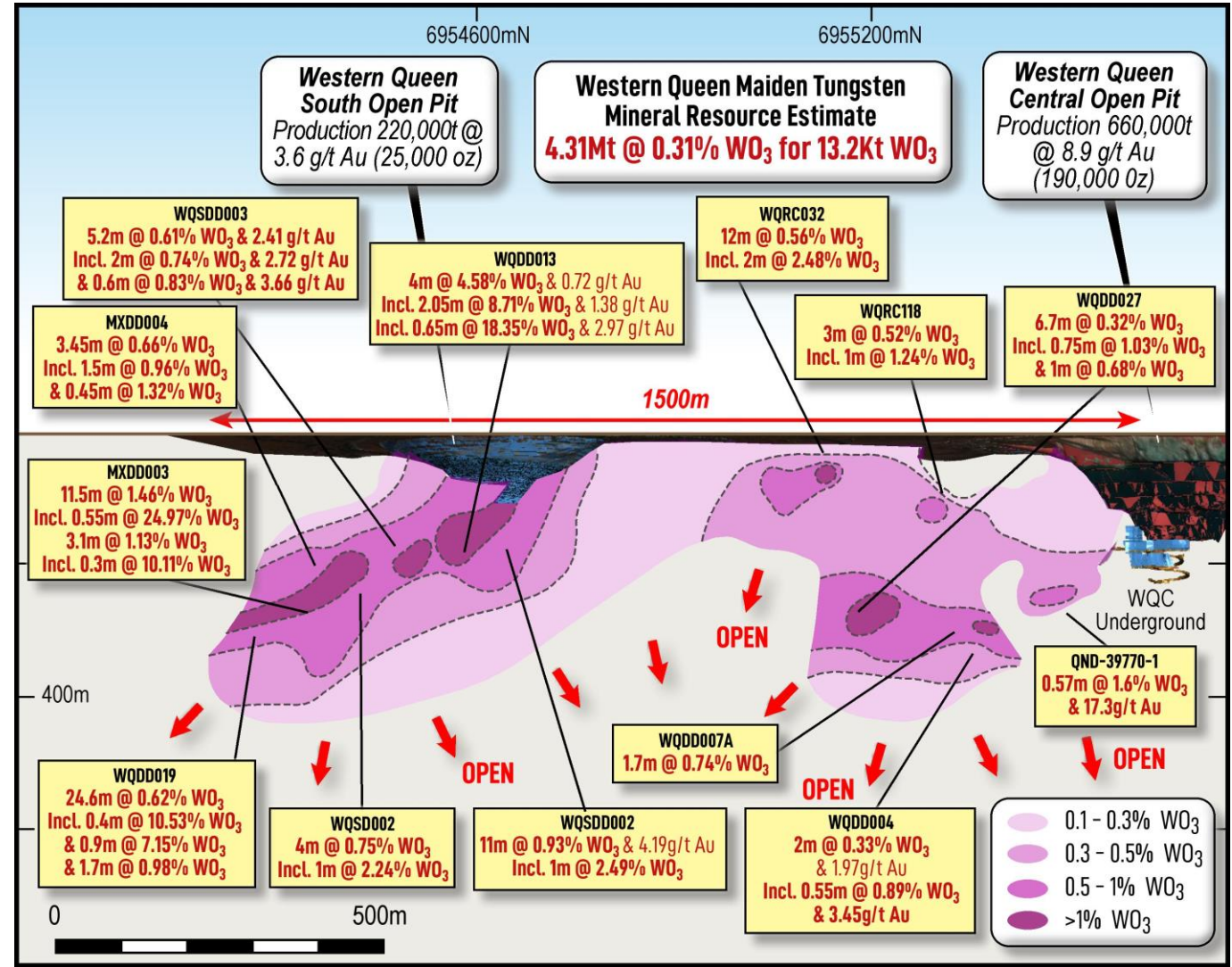
WQDD019:

- **26m @ 0.62% WO₃**

WQSD002:

- **11m @ 0.93% WO₃** and 4.19g/t Au

Higher grade tungsten lodes parallel to defined high-grade gold mineralisation



1. ASX release dated 6 August 2024 – High-grade Tungsten Discovery at Western Queen

2. ASX released dated 17 February 2025 - High-grade gold and tungsten assays returned from Phase 1 drilling at Western Queen

TUNGSTEN – MAIDEN RESOURCE – 13.2KT WO₃¹

Table 1 – Western Queen August 2025 Tungsten Mineral Resource Estimate (0.1% WO₃ Cut-off)

Prospect	Inferred Mineral Resource		
	Tonnage kt	WO ₃ %	WO ₃ t
WQC	790	0.27	2,200
Princess	810	0.22	1,800
WQS	2,710	0.34	9,200
Total	4,310	0.31	13,200

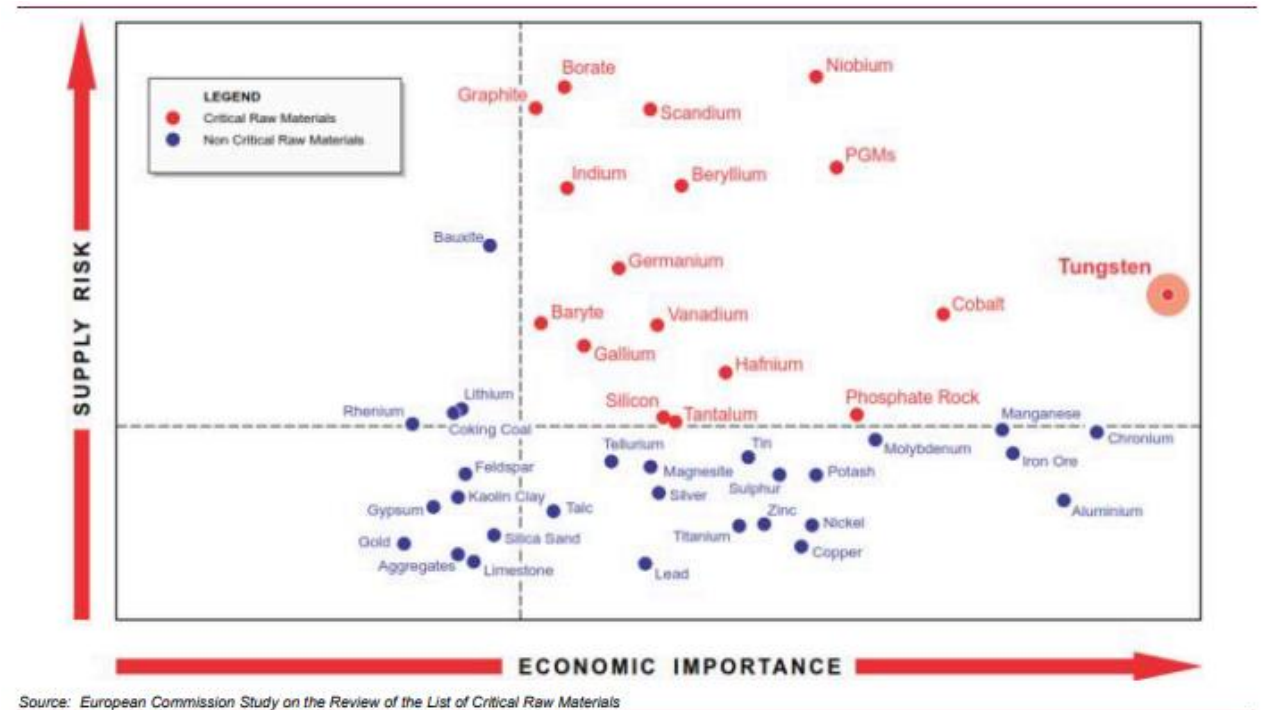
The maiden resource includes open, higher grade zones, which at a 0.3% WO₃ cutoff result in **1.44Mt @ 0.51% WO₃¹**

Totals may differ due to rounding, Mineral Resources reported on a dry in-situ basis.

Western Queen maiden resource compared to Almonty’s Sangdong Resources

Table 1-1. Sangdong – Mineral Resources
As of 28th February, 2025 Note 2

WO ₃ Cut-Off	Resource Class	Tonnes Kt	WO ₃ %	MoS ₂ %
0.15%	Indicated	8,029	0.51	0.06
	Inferred	50,686	0.43	0.05



Source: European Commission Study on the Review of the List of Critical Raw Materials

¹ refer Company’s ASX Announcement 11 August 2025

² refer Almonty Industries Inc. release 3 July 2025

Maiden Sulphide, pit constrained, inferred Mineral Resource Estimate (MRE)

- **94Mt @ 3.1% Zn+Pb and 4.1g/t Ag (at a 2% Zn+Pb cutoff) for 2.2Mt Zinc, 0.7Mt Lead and 12.6Moz Silver of contained metal**
- Large scale, low-cost open pit mining proposition in premier mining jurisdiction
- One of the largest zinc sulphide discoveries globally over the last decade

Metallurgical testwork confirms

- High recoveries and bulk concentrate spec. (+60% Zn+Pb) suitable for ISP smelters
- HydroFloat™ works – rejects 30% of the waste and should lead to lower plant capex & opex

Project optionality

- The pit constrained MRE hosts a **41Mt higher-grade component** >3% Zn+Pb cut-off

Exceptional resource growth and discovery potential

- **Deposits remain open with less than 30%** of the now 70km host Unconformity Unit effectively drill tested
- Excellent potential to locate further **near-surface high grade areas** i.e. **Mato, Kalitan, Colorado zones**
- **High grade MVT deposit targets** in fertile underlying carbonate formations remain **untested**



¹ refer Company's ASX Announcement 19 April 2023

GLOBALLY SIGNIFICANT PIT CONSTRAINED MAIDEN RESOURCE¹

Table A: Maiden Inferred Mineral Resource tabulation for the Earraheedy Project.

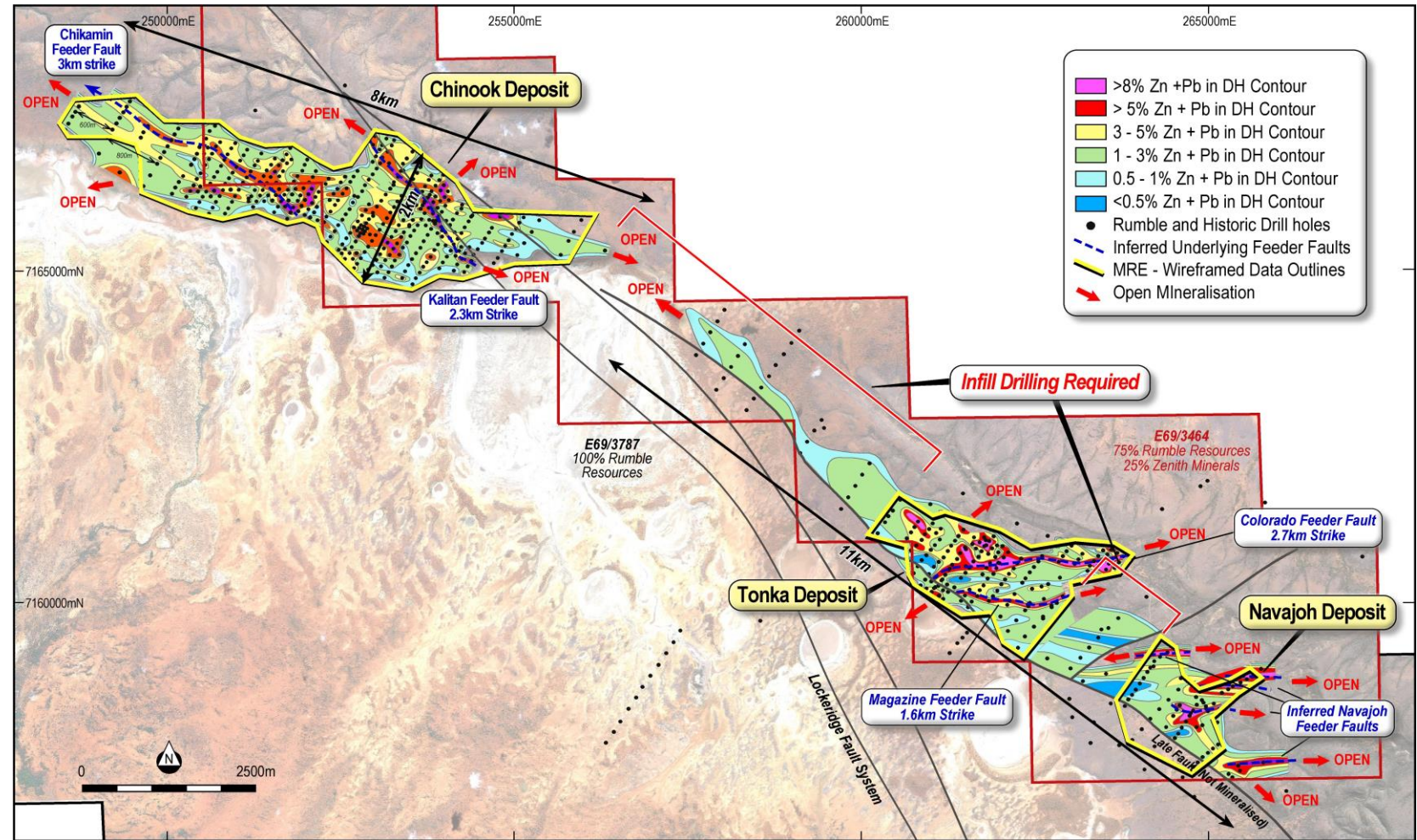
Cut off Zn+Pb %	Inferred – Chinook					Inferred – Tonka and Navajoh					Inferred Total				
	Tonnes	Zn+Pb	Zn	Pb	Ag	Tonnes	Zn+Pb	Zn	Pb	Ag	Tonnes	Zn+Pb	Zn	Pb	Ag
	Mt	%	%	%	g/t	Mt	%	%	%	g/t	Mt	%	%	%	g/t
0.5	334	1.3	0.9	0.4	2.3	128	1.5	1.2	0.2	1.9	462	1.3	1.0	0.3	2.2
1.0	135	2.1	1.5	0.6	3.4	59	2.3	2.0	0.4	2.6	194	2.2	1.6	0.5	3.1
2.0	63	3.0	2.1	0.8	4.6	31	3.3	2.8	0.5	3.4	94	3.1	2.4	0.7	4.2
2.5	39	3.4	2.4	0.9	5.2	25	3.5	3.0	0.5	3.6	65	3.4	2.6	0.8	4.5
3.0	24	3.8	2.7	1.1	5.7	17	3.9	3.3	0.6	3.8	41	3.8	3.0	0.9	4.9
4.0	7	4.7	3.3	1.5	6.8	5	4.9	4.1	0.8	4.3	12	4.8	3.6	1.2	5.7

Footnote: Inferred Mineral Resource is constrained within optimised pit shells and tabulated above at different economic Zn+Pb% cut offs.

¹refer Company's ASX Announcement 19 April 2023

EXCEPTIONAL RESOURCE GROWTH POTENTIAL

- Inferred resources constrained to closer spaced drilling **with potential to significantly grow resources with infill and extension drilling**
- **Exceptional resource expansion** with deposits open in all directions
- Mineralisation intersected in broader spaced drilling outside of inferred resource areas **highlights the potential for near term resource growth**
- Potential to **discover high-grade MVT and fault related resources** beneath existing resource area in underlying carbonate formations



Thunderstorm - Au

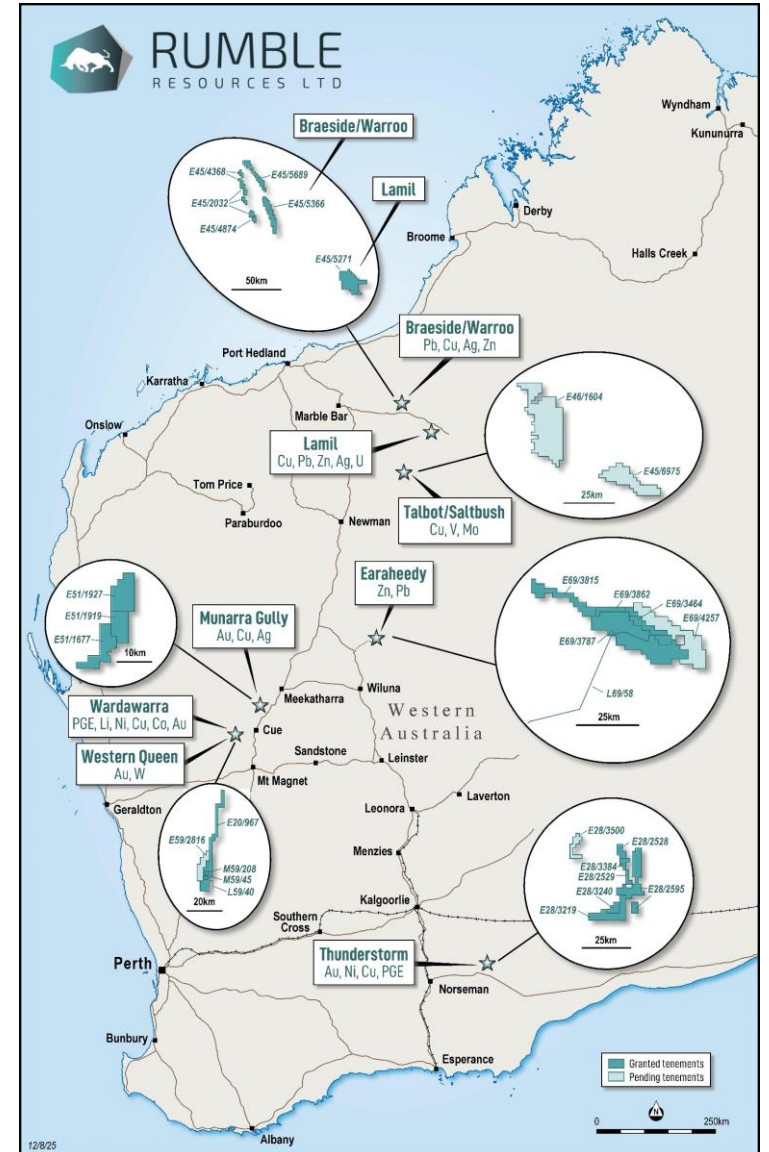
- Potential to host major palaeochannel/basement gold deposits
- Near surface high-grade intersections:
 - **16m @ 6.69g/t Au from 42m**
 - **6m @ 9.15g/t Au from 48m**
- 10,000m aircore and RC drill program being planned for FY26

Earaheedy – base metals & Ag

- Globally significant Zn-Pb-Ag discovery
- **Maiden Resource 2.2Mt Zn, 0.7Mt Pb & 12.6Moz Ag**
- Looking for a development partner

Other Projects

- Munarra Gully – prospective for Au, Cu, Ag
- Lamil – Cu



FRASER RANGE – THUNDERSTORM GOLD PROJECT

Acquisition

- Rumble has acquired the remaining 70% from IGO
- 3 tenements – E28/2528, 2595, 2529
- \$300k in Rumble stock & 1.05% NSR

Gazelle Discovery

- Prior wide spaced AC drilling on 1,500m traverses returned high-grade paleo channel gold mineralisation in 2019 including:
 - 16m @ 6.69g/t Au from 42m**
 - 6m @ 9.15g/t Au from 48m

Pion Discovery

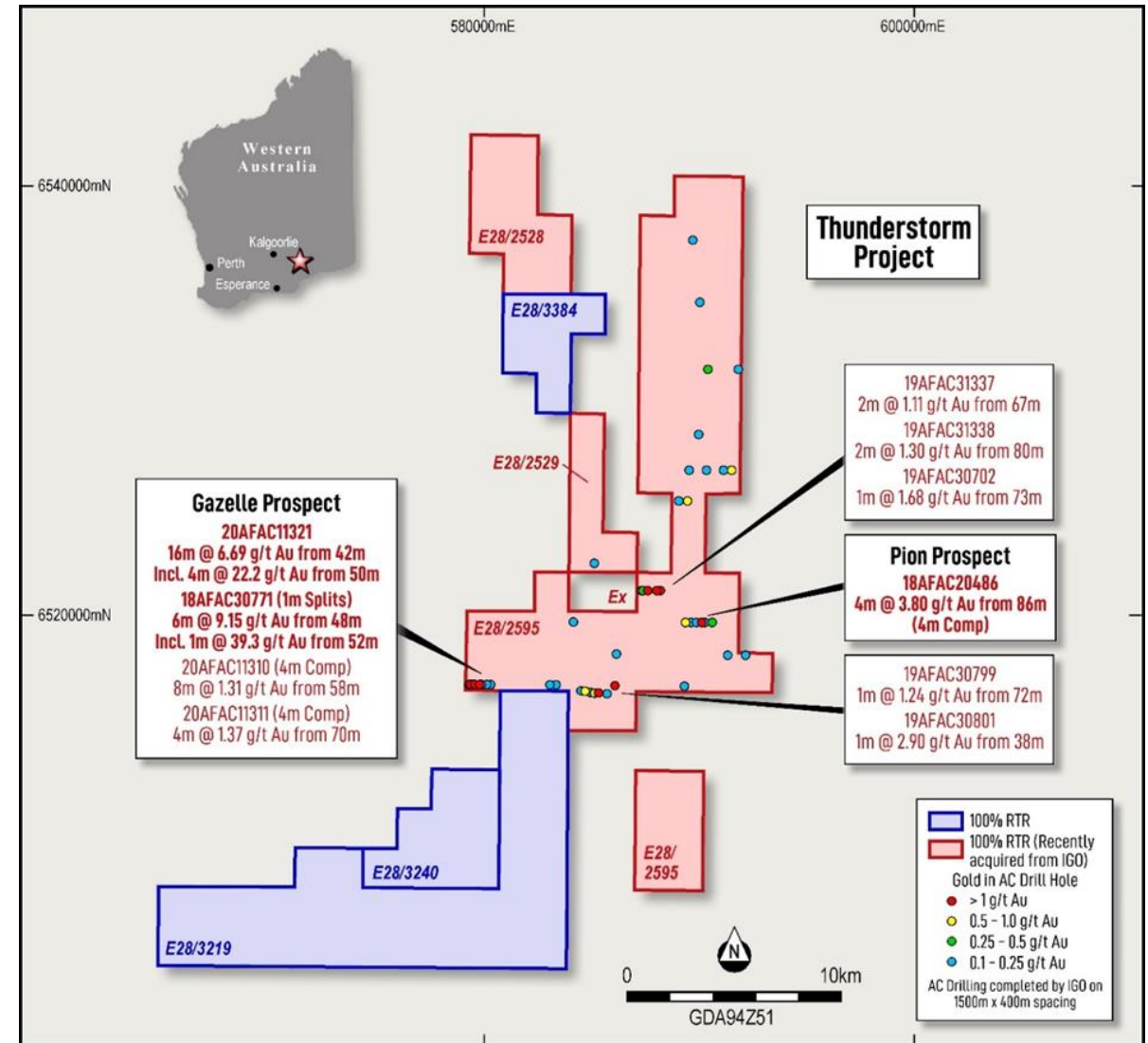
- 4m @ 3.80g/t Au from 86m
- Gold anomalism in 6 holes over 1.2km area

Why we like Thunderstorm

- Gazelle and Pion have similar characteristics to the palaeochannel/placer gold deposits of Higginsville and Kanowna
- Shallow gold mineralisation with high-grade zones at Gazelle point to a potential proximal high-grade basement source

Next steps

- AC infill drill program at Gazelle being planned



Thunderstorm Project Location & AC Drill Results

¹ Refer Company's ASX Announcement 7 April 2025 – Rumble Acquires 100% of Thunderstorm Gold Project

Driving value through exploration success and key milestone achievements to enhance shareholder returns.

Western Queen Au & WO₃

- Aim to grow gold resources with extensional drilling
- Infill drilling to increase confidence ahead of proposed mining activities
- Grow the tungsten resource and determine route to cashflow

Earaheedy Zn,Pb,Ag

- Complete the internal scoping study
- Seek a development partner

Other Projects Au, Cu, PGMs

- Drill Thunderstorm Au targets
- Continue to build a Cu-Au exploration portfolio
- Advance other projects via JVs/partnerships/other forms of collaboration

Recognition of True Value

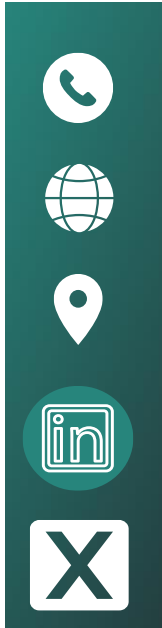
- Gold production to fund dividend stream and resource growth at Western Queen
- Add tungsten revenue stream
- Unlock value of Earraheedy

CONNECT WITH US

Personal use only



Peter Harold
Managing Director & CEO
info@rumbleresources.com.au



+61 8 6555 3980

rumbleresources.com.au

Level 1, 16 Ord Street,
West Perth, WA 6005

<https://www.linkedin.com/company/rumble-resources-ltd>

[Rumble Resources Ltd \(@RumbleResources\) / X](#)

