

ASX Announcement 1 December 2025

High-Priority Targets Identified at Jessop's Creek and Whistler; Strategic Expansion to Leonora South Footprint

HIGHLIGHTS

- **New soil sampling defines high-priority gold anomalies** at Jessop's Creek (up to 22.5ppb Au), Whistler (up to 89ppb Au) and Woodpecker-South (up to 71ppb Au).
- **~4,000m aircore program set to commence in early December** to test these newly defined gold anomalies and existing targets
- **Application for four new Exploration Licences** submitted, adding 80.6km² to the Leonora South Gold Project, consolidating ground along strike from Jessop's Creek Targets
- **Application area already covered by prior regional geophysical surveys**, allowing for immediate target definition upon granting.
- **1,823m Reverse Circulation drill program completed** across 37 holes at six priority prospects (Whistler, Woodpecker South, Pirie, La Trobe, La Trobe East and Euroa).
- **All drill samples dispatched** to the laboratory, assay results expected January 2026.

GoldArc Resources Limited (ASX:GA8) ('GoldArc' or 'the Company') is pleased to provide an exploration update for its Leonora South Gold Project in Western Australia. The Company is pleased to announce positive results from recent soil sampling which underpin an upcoming Aircore (AC) drilling program, while also reporting the expansion of the Leonora South Gold Project and the completion of its recent Reverse Circulation (RC) drilling campaign.

GoldArc Managing Director, Paul Stephen commented:

"The results from our targeted soil sampling at Jessop's Creek and Whistler are an excellent outcome, clearly defining new drill targets for the upcoming AC program. The identification of a continuous 1.3km long gold anomaly at Jessop's Creek is particularly exciting and confirms the prospectivity of this major structural corridor.

Additionally, the application for new ground will consolidate our position along a significant pipeline of greenfield targets and directly along strike from our Jessop's Creek targets. This expansion, coupled with the drilling programs, ensures we maintain strong and continuous exploration progress.

We eagerly await the results from both the RC and AC programs early next year".

ASX:GA8

GoldArc Resources

goldarcres.com.au

104 Colin Street
West Perth WA 6005

+61 8 9420 8208



Soil Sampling and Planned Aircore Drilling

In October, the Company completed targeted soil sampling grids at its Jessop's Creek prospect, as well as at Whistler and Woodpecker South prospects, successfully defining new anomalies for immediate drill follow-up.

135 samples were collected at Jessop's Creek over two grids (total area of 1km²) and were designed to assist in the planning of the upcoming aircore program. The western grid was centred over a historic soil sample that returned elevated gold content, whilst the eastern grid was centred over a historical drillhole that had mafic lithologies recorded at the bottom of hole. The soil samples were analysed via the Ultrafine+ methodology to ensure better elemental readings in these particular areas of potentially deep weathering.

The western grid confirmed the historic anomaly, returning a peak value of 22.5ppb Au (KOS028), which centred within a broader 10ppb Au anomaly stretching over 1.3km from the northeast to the southwest (see Figure 1). The eastern grid returned a peak value of 11.8ppb Au located in close proximity to where mafic lithologies have historically been logged.

At Whistler and Woodpecker-South, two grids were sampled and centred over historic gold workings and a total of 109 soil samples were collected and analysed for Au via aqua regia.

A larger and broader survey at was conducted at Whistler consisting of 87 samples, returning a central core soil anomaly consisting of 89ppb (KOS172) and 41ppb Au (KOS173). This central core is flanked on either side by an additional two samples returning >10ppb Au (see Figure 2).

At Woodpecker-South, a smaller more closely spaced grid was surveyed and 22 samples were collected across two lines with peak sample returning 71ppb Au (KOS0255) along with a further three samples returning >10ppb Au.

These anomalies, in addition to others, will be the focus of the planned aircore drilling in December .

For further information of soil sampling, please refer to Appendix 1 and 2.

The aircore drilling is expected to commence in early-December and will consist of approximately 4,000m of drilling. The Company looks forward to updating shareholders with further information from this program as soon as possible.

ASX:GA8

GoldArc Resources

goldarcres.com.au

104 Colin Street
West Perth WA 6005

+61 8 9420 8208



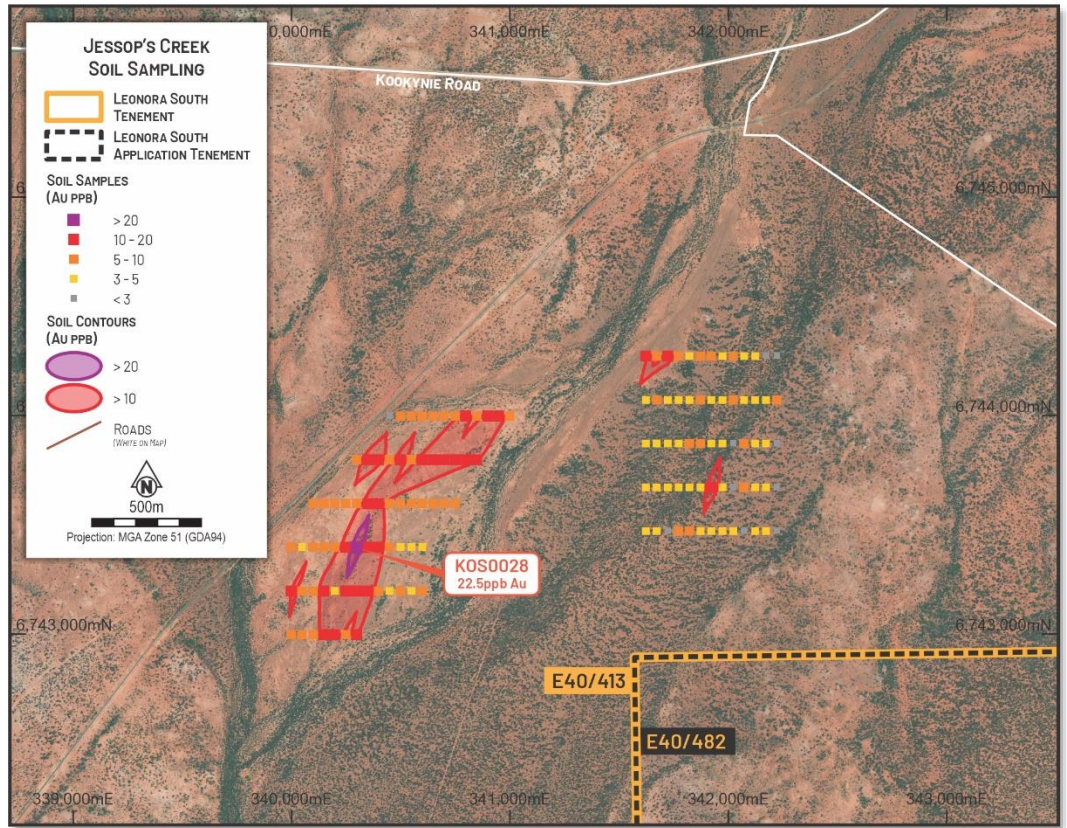


Figure 1 - Soil Sampling at Jessop's Creek

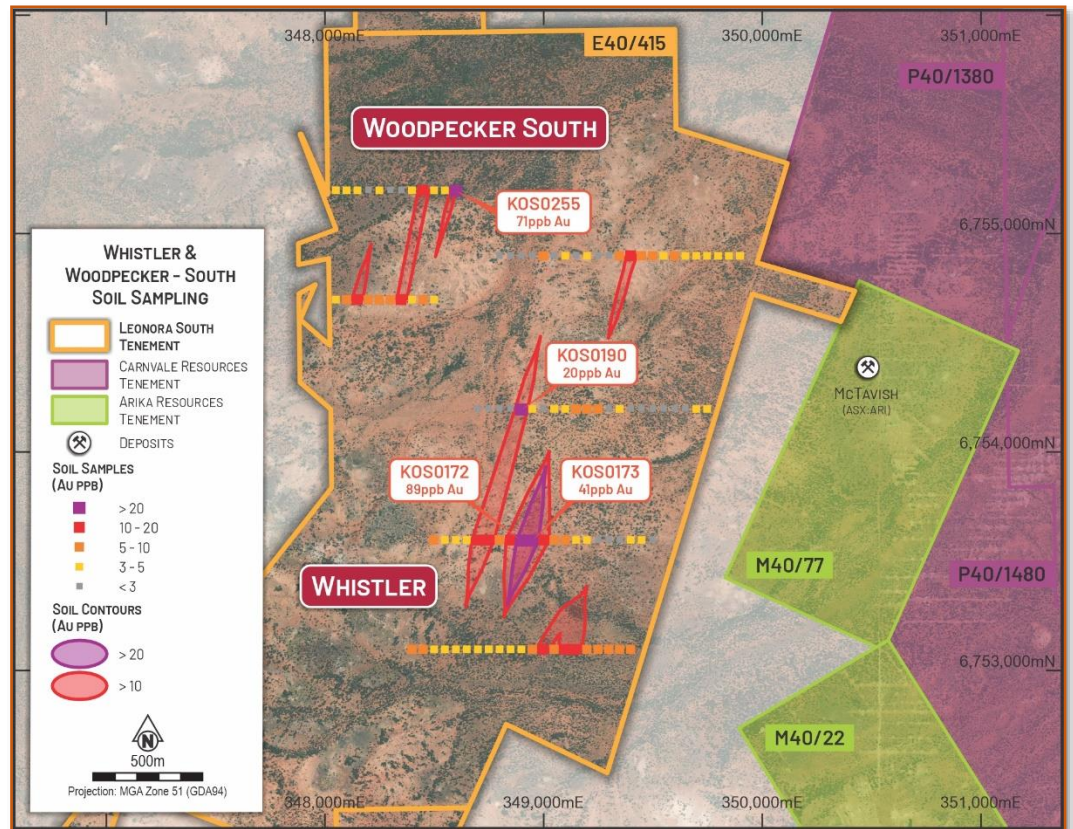


Figure 2 - Soil Sampling at Whistler and Woodpecker-South

ASX:GA8

GoldArc Resources

goldarcres.com.au

104 Colin Street
 West Perth WA 6005

+61 8 9420 8208



Leonora South Tenement Application

The Company has applied for four new Exploration Licences (E40/481, 482, 483 and 484), totalling 80.6km² to expand its tenure within the Leonora Gold District (see Figure 3).

The applications were lodged to consolidate GoldArc's position along a major mineralised trend. The ground is situated directly along strike from GoldArc's existing, high-priority Jessop's Creek Targets as well as other greenfield targets. The new ground is already covered by existing Company geophysical surveys, allowing GoldArc to immediately commence detailed structural and geological targeting upon successful granting of the licences.

The Company's immediate next steps involve advancing the tenement applications through the regulatory process and initiating planning for early-stage exploration programs (soil sampling and mapping) for the new ground upon granting of the licences.

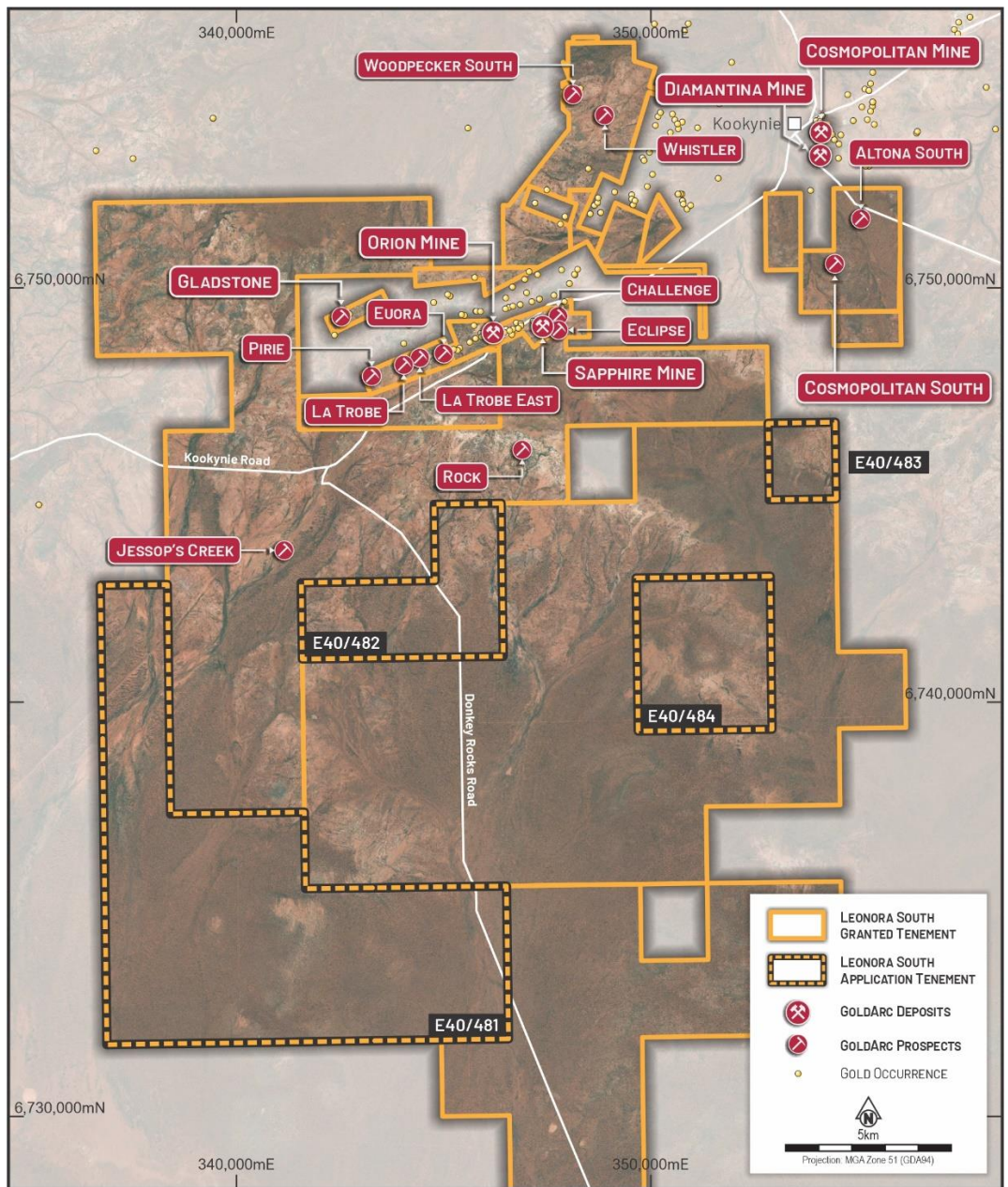


Figure 3 – New Applications at The Leonora South Gold Project

ASX:GA8

GoldArc Resources

goldarcres.com.au

104 Colin Street
West Perth WA 6005

+61 8 9420 8208



RC Drilling Program Completed

The Company is pleased to confirm the completion of the RC drilling program across multiple prospects near Kookynie, Western Australia.

The program comprised a total of 1,823 metres of RC drilling for a total of 37 holes. The drilling tested six high-priority targets (Woodpecker South, Whistler, Pirie, La Trobe, La Trobe East, and Euroa). Majority of these targets had seen little to no modern exploration providing considerable new discovery potential. The campaign was designed to assess mineralisation surrounding historic workings along with testing continuation of previously intersected gold mineralisation in historic drillholes.

All samples have been dispatched to the laboratory for assaying. The Company looks forward to advising shareholders of further details and results of this program in January 2026 when assays are received.

- ENDS -

Investors

Paul Stephen

Managing Director

GoldArc Resources Limited

info@goldarcres.com.au

Investor Relations

Madeline Howson

Investor Relations

Discover Investor Relations

madeline@discover.com.au

ASX:GA8

GoldArc Resources

goldarcres.com.au

104 Colin Street
West Perth WA 6005

+61 8 9420 8208



Forward Looking Statements Disclaimer

This announcement contains certain “forward-looking statements” and comments about future matters. Forward-looking statements can generally be identified by the use of forward-looking words such as, “expect”, “anticipate”, “likely”, “intend”, “should”, “estimate”, “target”, “outlook”, and other similar expressions and include, but are not limited to, indications of, and guidance or outlook on, future events, agreeing and entering into definitive agreements, project and growth opportunities, production, resource growth and discovery, exploration activities, drilling programs or the financial position or performance of the Company. You are cautioned not to place undue reliance on forward-looking statements. Any such statements, opinions and estimates in this release speak only as of the date hereof, are preliminary views and are based on assumptions and contingencies subject to change without notice. Forward-looking statements are provided as a general guide only. There can be no assurance that actual outcomes will not differ materially from these forward-looking statements. Any such forward-looking statement also inherently involves known and unknown risks, uncertainties and other factors and may involve significant elements of subjective judgement and assumptions that may cause actual results, performance and achievements to differ. Except as required by law the Company undertakes no obligation to finalise, check, supplement, revise or update forward-looking statements in the future, regardless of whether new information, future events or results or other factors affect the information contained in this announcement.

Competent Persons Statement

The information in this report as it relates to exploration results and geology is based on, and fairly represents, information and supporting documentation that was compiled by Mr. Austin Gow, who is an employee of the Company. Mr. Gow has sufficient experience which is relevant to the styles of mineralisation and types of deposit under consideration and to the activities which he is undertaking to qualify as a Competent Person as defined in the 2012 Edition of the Australasian Code for Reporting of Exploration Results, Mineral Resources and Ore Reserves'. Mr. Gow consents to the inclusion in the report of the matters based on the information in the form and context in which it appears.

The information in this announcement that relates to the Orion-Sapphire Mineral Resources is contained in the ASX announcement released on 28 May 2024. The information in this announcement that relates to the gold Mineral Resources for the Mt Stirling Project is contained in the ASX announcements released on 25 February 2019, 29 January 2020 and 5 September 2022. The Company confirms that it is not aware of any new information or data that materially affects the information in the relevant market announcements, and that all material assumptions and technical parameters underpinning the estimates in the relevant announcement continue to apply and have not materially changed. that the Company confirms that the form and context in which the Competent Persons findings are presented have not been materially modified from the original announcements.

ASX:GA8

GoldArc Resources

goldarcres.com.au

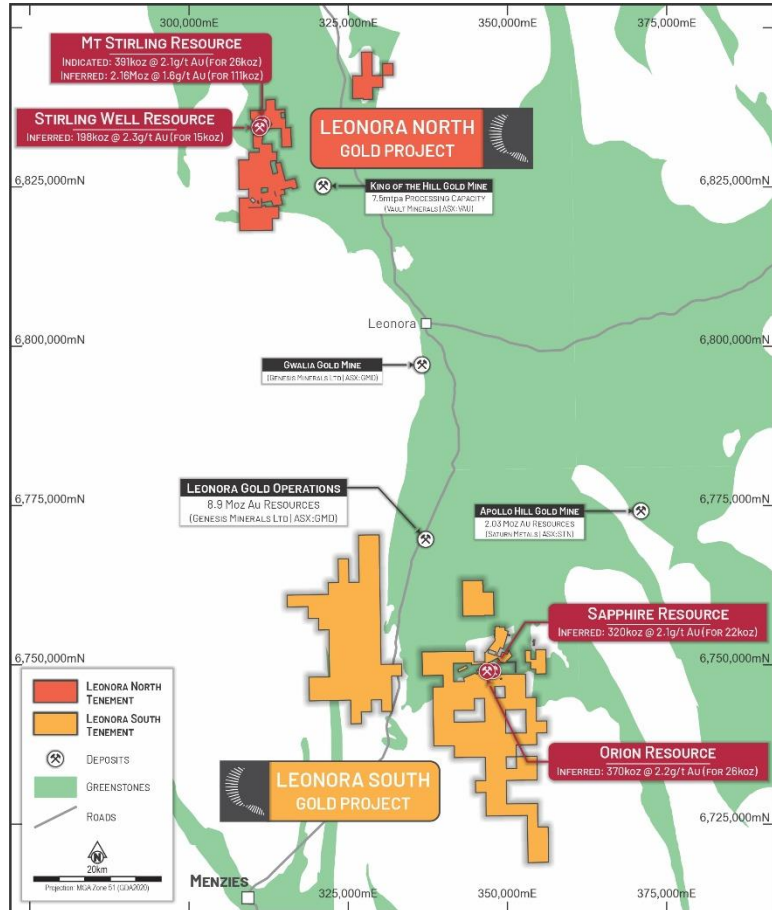
104 Colin Street
West Perth WA 6005

+61 8 9420 8208



About GoldArc Resources

GoldArc Resources Limited (ASX:GA8) is a Western Australian focused mineral exploration company with a portfolio of highly prospective gold projects located in the world-class Leonora and Kookynie districts of the Eastern Goldfields. GoldArc's strategy is focused on growing its existing 200,000oz JORC resource base and making new, large-scale discoveries through a disciplined and systematic approach to exploration.



GoldArc Resources Total JORC Mineral Resources

GoldArc Gold Projects	Category	Tonnes	Gold Grade (g/t Au)	Gold Ounces
Leonora North - Mt Stirling	Indicated	391,000	2.1	26,000
	Inferred	2,158,000	1.6	111,000
Leonora North - Stirling Well	Inferred	198,000	2.3	15,000
Leonora South - Orion	Inferred	370,000	2.2	26,409
Leonora South - Sapphire	Inferred	320,000	2.1	21,605
Total		3,437,000	1.82	200,064

ASX:GA8

GoldArc Resources

goldarcres.com.au

104 Colin Street
West Perth WA 6005

+61 8 9420 8208



Appendix 1 – Significant Soil Sampling Information (Au > 5ppb)

Prospect	Sample	Easting	Northing	Method	Au
Jessop's	KOS0001	340000	6743000	UFF	7.1
Jessop's	KOS0002	340050	6743000	UFF	7.8
Jessop's	KOS0003	340100	6743000	UFF	6.9
Jessop's	KOS0004	340150	6743000	UFF	12.3
Jessop's	KOS0005	340200	6743000	UFF	13.5
Jessop's	KOS0006	340250	6743000	UFF	5.9
Jessop's	KOS0007	340300	6743000	UFF	13.8
Jessop's	KOS0008	340000	6743200	UFF	11
Jessop's	KOS0009	340050	6743200	UFF	6.7
Jessop's	KOS0010	340100	6743200	UFF	7.4
Jessop's	KOS0011	340150	6743200	UFF	12.3
Jessop's	KOS0013	340250	6743200	UFF	14.1
Jessop's	KOS0014	340300	6743200	UFF	12.6
Jessop's	KOS0015	340350	6743200	UFF	13.3
Jessop's	KOS0016	340400	6743200	UFF	8.5
Jessop's	KOS0018	340500	6743200	UFF	9.9
Jessop's	KOS0020	340600	6743200	UFF	8.5
Jessop's	KOS0021	340000	6743400	UFF	5.6
Jessop's	KOS0023	340100	6743400	UFF	8.8
Jessop's	KOS0024	340150	6743400	UFF	8.2
Jessop's	KOS0026	340200	6743400	UFF	7.6
Jessop's	KOS0027	340250	6743400	UFF	12.5
Jessop's	KOS0028	340300	6743400	UFF	22.5
Jessop's	KOS0029	340350	6743400	UFF	10.4
Jessop's	KOS0030	340400	6743400	UFF	10.1
Jessop's	KOS0031	340450	6743400	UFF	6.8
Jessop's	KOS0035	340100	6743600	UFF	7.3
Jessop's	KOS0036	340150	6743600	UFF	6.2
Jessop's	KOS0037	340200	6743600	UFF	5.6
Jessop's	KOS0038	340250	6743600	UFF	6.3
Jessop's	KOS0039	340300	6743600	UFF	6.8
Jessop's	KOS0040	340350	6743600	UFF	11.5
Jessop's	KOS0041	340400	6743600	UFF	12.5
Jessop's	KOS0042	340450	6743600	UFF	7
Jessop's	KOS0043	340500	6743600	UFF	9
Jessop's	KOS0044	340550	6743600	UFF	9.1
Jessop's	KOS0045	340600	6743600	UFF	6.6
Jessop's	KOS0046	340650	6743600	UFF	8.2
Jessop's	KOS0047	340700	6743600	UFF	5.5
Jessop's	KOS0048	340750	6743600	UFF	8.4
Jessop's	KOS0049	340300	6743800	UFF	8.8
Jessop's	KOS0051	340350	6743800	UFF	10.7
Jessop's	KOS0052	340400	6743800	UFF	15.6
Jessop's	KOS0053	340450	6743800	UFF	9.4
Jessop's	KOS0054	340500	6743800	UFF	10.3
Jessop's	KOS0055	340550	6743800	UFF	9.1
Jessop's	KOS0056	340600	6743800	UFF	12.2
Jessop's	KOS0057	340650	6743800	UFF	14.6
Jessop's	KOS0058	340700	6743800	UFF	13.3
Jessop's	KOS0059	340750	6743800	UFF	12.7
Jessop's	KOS0060	340800	6743800	UFF	17.1
Jessop's	KOS0061	340850	6743800	UFF	11.1
Jessop's	KOS0063	340500	6744000	UFF	7.7
Jessop's	KOS0064	340550	6744000	UFF	8.5
Jessop's	KOS0065	340600	6744000	UFF	7.3
Jessop's	KOS0066	340650	6744000	UFF	8.5
Jessop's	KOS0067	340700	6744000	UFF	6.7
Jessop's	KOS0068	340750	6744000	UFF	8.9
Jessop's	KOS0069	340800	6744000	UFF	10.7
Jessop's	KOS0070	340850	6744000	UFF	7.9
Jessop's	KOS0071	340900	6744000	UFF	10.5

Prospect	Sample	Easting	Northing	Method	Au
Jessop's	KOS0072	340950	6744000	UFF	15.1
Jessop's	KOS0073	341000	6744000	UFF	8.3
Jessop's	KOS0078	341773	6743474	UFF	6.3
Jessop's	KOS0079	341823	6743474	UFF	5.5
Jessop's	KOS0094	341923	6743674	UFF	11.8
Jessop's	KOS0097	342073	6743674	UFF	6.1
Jessop's	KOS0106	341823	6743874	UFF	7.1
Jessop's	KOS0107	341873	6743874	UFF	5.2
Jessop's	KOS0111	342073	6743874	UFF	7.7
Jessop's	KOS0116	341673	6744074	UFF	5.9
Jessop's	KOS0120	341873	6744074	UFF	9.4
Jessop's	KOS0123	342023	6744074	UFF	6.8
Jessop's	KOS0128	342223	6744074	UFF	5
Jessop's	KOS0129	341623	6744274	UFF	12
Jessop's	KOS0130	341673	6744274	UFF	8.2
Jessop's	KOS0131	341723	6744274	UFF	10.5
Jessop's	KOS0132	341773	6744274	UFF	8.1
Jessop's	KOS0134	341873	6744274	UFF	8.3
Jessop's	KOS0135	341923	6744274	UFF	5.2
Jessop's	KOS0137	342023	6744274	UFF	6.2
Whistler	KOS0142	348400	6753100	AR	5
Whistler	KOS0143	348450	6753100	AR	6
Whistler	KOS0154	348950	6753100	AR	5
Whistler	KOS0155	349000	6753100	AR	11
Whistler	KOS0156	349050	6753100	AR	7
Whistler	KOS0157	349100	6753100	AR	16
Whistler	KOS0158	349150	6753100	AR	11
Whistler	KOS0159	349200	6753100	AR	9
Whistler	KOS0160	349250	6753100	AR	8
Whistler	KOS0161	349300	6753100	AR	7
Whistler	KOS0162	349350	6753100	AR	6
Whistler	KOS0163	349400	6753100	AR	9
Whistler	KOS0164	348500	6753600	AR	5
Whistler	KOS0168	348700	6753600	AR	11
Whistler	KOS0169	348750	6753600	AR	18
Whistler	KOS0170	348800	6753600	AR	8
Whistler	KOS0171	348850	6753600	AR	17
Whistler	KOS0172	348900	6753600	AR	89
Whistler	KOS0173	348950	6753600	AR	41
Whistler	KOS0174	349000	6753600	AR	11
Whistler	KOS0176	349050	6753600	AR	7
Whistler	KOS0177	349100	6753600	AR	8
Whistler	KOS0190	348900	6754200	AR	20
Whistler	KOS0195	349150	6754200	AR	5
Whistler	KOS0196	349200	6754200	AR	9
Whistler	KOS0197	349250	6754200	AR	5
Whistler	KOS0213	349000	6754900	AR	5
Whistler	KOS0220	349350	6754900	AR	5
Whistler	KOS0221	349400	6754900	AR	11
Whistler	KOS0222	349450	6754900	AR	8
Whistler	KOS0223	349500	6754900	AR	7
Whistler	KOS0226	349600	6754900	AR	5
Woodpecker S	KOS0234	348100	6754700	AR	9
Woodpecker S	KOS0235	348150	6754700	AR	14
Woodpecker S	KOS0236	348200	6754700	AR	7
Woodpecker S	KOS0237	348250	6754700	AR	6
Woodpecker S	KOS0238	348300	6754700	AR	7
Woodpecker S	KOS0239	348350	6754700	AR	12
Woodpecker S	KOS0241	348450	6754700	AR	8
Woodpecker S	KOS0252	348450	6755200	AR	12
Woodpecker S	KOS0255	348600	6755200	AR	71

Please note: "Jessop's" = Jessop's Creek, "Woodpecker S" = Woodpecker South, Eastings and Northings are in GDA94 Zone51S, "UFF" = Ultrafine+, "AR" = Aqua Regia, Au is denoted in ppb (parts per billion).

ASX:GA8

GoldArc Resources

goldarcres.com.au

104 Colin Street
West Perth WA 6005

+61 8 9420 8208



Appendix 2 – JORC Code, 2012 Edition – Table 1 – Soil Sampling

Section 1 – Sampling Techniques and Data

(Criteria in this section apply to all succeeding sections.)

Criteria	Commentary
Sampling techniques	<ul style="list-style-type: none"> No drilling is reported in this release. Soil samples were taken from below the organic layer (typically ~10cm below surface) and consisted of the -80-mesh fraction in most cases. Gold analyses were conducted using aqua regia AR25/MS at the Whistler and Woodpecker South prospects– an established Industry-standard method for gold mineralisation Gold and multi-element analyses were conducted using Labwest’s Ultrafine methodology UFF-PER at the Jessop’s Creek prospect – also, an established Industry-standard method for gold and multi-element mineralisation. The multielement analyses are not reported herein. At Whistler and Woodpecker South multi-element analyses were conducted via PXRF. The PXRF analyses are not reported herein.
Drilling techniques	<ul style="list-style-type: none"> No drilling is reported in this release.
Drill sample recovery	<ul style="list-style-type: none"> No drilling is reported in this release.
Logging	<ul style="list-style-type: none"> No drilling is reported in this release.
Sub-sampling techniques and sample preparation	<ul style="list-style-type: none"> No drilling is reported in this release. Soil samples were taken from below the organic layer (typically ~10cm below surface) and consisted of the minus 80 mesh fraction. This fraction was subsequently pulverised. Gold analyses were conducted using aqua regia AR25/MS and Labwest’s Ultrafine methodology UFF-PER (depending on prospect, please see sampling techniques section for details) – an established Industry-standard method for gold mineralisation Multi-element analyses were conducted via PXRF and UFF-PER (depending on prospect, please see sampling techniques section for details). The multielement results are not reported herein.
Quality of assay data and laboratory tests	<ul style="list-style-type: none"> No drilling is reported in this release. Blank samples were inserted into the sequence at a rate of 1 blank per 50 samples Duplicates were inserted into the sequence at a rate of 1 duplicate per 50 samples Certified reference material (CRM) was inserted at a nominal rate by the laboratories
Verification of sampling and assaying	<ul style="list-style-type: none"> No drilling is reported in this release. All sampling conducted is verified by a minimum of two Company personnel apart from the Competent Person. Data from the field is transferred onto head office digital storage daily. Assay values below detection were stored in the database as minus the detection limit. Intervals with no samples were recorded in the sample table and excluded from the assay table in the database. Assay files were received electronically from the laboratory. No alterations have been made to primary assay data.
Location of data points	<ul style="list-style-type: none"> No drilling is reported in this release. Soil and rock chip sampling was located in 3D using hand-held GPS instruments.
Data spacing and distribution	<ul style="list-style-type: none"> No drilling is reported in this release. Soil sampling spacing is considered appropriate to dispersions.
Orientation of data in relation to geological structure	<ul style="list-style-type: none"> No drilling is reported in this release. Soil traverses were taken at an orientation dominantly perpendicular to structure.
Sample security	<ul style="list-style-type: none"> Samples are packed into paper bags which are sealed and conveyed to Intertek in Kalgoorlie by GoldArc personnel and by reputable couriers to Labwest in Perth
Audits or reviews	<ul style="list-style-type: none"> All assay data has been reviewed by two Company personnel. No external audits have been conducted.

ASX:GA8

GoldArc Resources

goldarcres.com.au

104 Colin Street
West Perth WA 6005

+61 8 9420 8208



Section 2 – Reporting of Exploration Results

(Criteria in this section apply to all succeeding sections)

Criteria	Commentary
Mineral tenement and land tenure status	<ul style="list-style-type: none"> For the tenements mentioned in the body of the announcement, an agreement between GoldArc and Ziggy Wolski has recently been signed whereby GoldArc can earn 70%. Historical Drilling Data Review was carried on valid Western Australian Mining Licenses 100% owned by Ziggy Wolski and the leases are in good standing. The Niagara Gold Project in the Kookynie Gold District of Western Australia comprises eight granted Mining Leases (M40/02, M40/08, M40/26, M40/56, M40/117, M40/192, M40/342, M40/344), two granted Exploration Licenses (E40/396 and E40/397), three pending Exploration Licenses (E40/413, E40/415, E40/416), and nine pending Prospecting Licenses (P40/1533, P40/1546, P40/1547, P40/1548, P40/1549, P40/1550, P40/1553, P40/1556, P40/1557). The combined area of the project is approximately 38, 400 ha. There is a 2% Royalty to a third party for minerals on these licenses. There are no known impediments to obtaining a license to operate.
Exploration done by other parties	<ul style="list-style-type: none"> Niagara Gold Tenements have undergone multiple drill programs over a protracted period focusing on areas around the historic prospects of Cosmopolitan, Diamantina, Orion, Sapphire, Gladstone, Missing Link, Eclipse, OK, Justice, Challenge, Niagara, Latrobe, and W.E.G. This drilling has already resulted in modern (post 1980) mining campaigns at Diamantina, Orion, and Sapphire. Numerous significant intercepts occur outside of mined areas. 1982 Australian Anglo-American drilling at Orion Sapphire. 1981-1985 Mogul Mining 1982-1987 BP Minerals, Minplex Resources and Spargos Exploration 1984-1989 BP Minerals. 1982-1990 BP Minerals and Hill Minerals and Hillman Gold mines explored the Sapphire workings with RAB and RC drilling. 1990-2000 Money Mining drilled the Diamantina and Cosmopolitan mineralization CRC and DRC drillholes. 1993-1994 Horizon Mining Niagara Project. RC and Diamond drilling for a resource definition at Orion and Sapphire. 2000-2010 Diamond ventures Kookynie Resources and Barmenco drilled Diamantina and Cosmopolitan. Kookynie Resources drilled extensions at Sapphire and Orion. 2010-2020 Nex Metals from 2009-2013, sold to A&C Mining Investments in 2014. A&C completed Aircore and RC drilling.
Geology	<ul style="list-style-type: none"> The Kookynie Gold Project is located in the central part of the Norseman-Wiluna belt of the Eastern Goldfields terrane. Host rocks in the region are primarily metasedimentary and metavolcanic lithologies of the Melita greenstones. Gold mineralisation is developed within structures encompassing a range of orientations and deformation styles. At the Gladstone, Orion and Sapphire deposits, gold mineralisation is controlled by a quartz vein system which trends east-northeast across an iron rich dolerite/gabbro host rock (the Niagara Gabbro Complex). The system dips to the south at between 50° and 80°. The mineralised structure, which is generally 2 to 5 metres wide, appears to be brittle with only minor shearing and alteration of the host gabbro.
Drill hole Information	<ul style="list-style-type: none"> No drilling is reported in this release
Data aggregation methods	<ul style="list-style-type: none"> No drilling is reported in this release. Soil sampling is depicted as point data and/or contours based on point data. No data aggregation has been conducted.
Relationship between mineralisation widths and intercept lengths	<ul style="list-style-type: none"> No drilling is reported in this release
Diagrams	<ul style="list-style-type: none"> Suitable figures have been included in the body of the announcement.
Balanced reporting	<ul style="list-style-type: none"> Key results and conclusions have been included in the body of the announcement.
Other substantive exploration data	<ul style="list-style-type: none"> Compilation of all historical exploration data at the project is underway and will be stored digitally.
Further work	<ul style="list-style-type: none"> Follow up field work is planned.

ASX:GA8

GoldArc Resources

goldarcres.com.au

104 Colin Street
West Perth WA 6005

+61 8 9420 8208

