

ASX ANNOUNCEMENT

1 December 2025

Geological mapping and high-resolution geophysics advance epithermal targeting at Columbia Gold Project

Successful field program paves way for definition of new high-impact drill targets

HIGHLIGHTS

- **Field program complete:** field exploration campaign successfully and safely completed at the Columbia Gold Project in Montana, USA, comprising of a high-resolution hybrid-source audio-magnetotellurics (HSAMT) geophysical survey, together with detailed structural, textural, alteration and geological mapping.
- **Outputs:** integration of data from the updated mapping and HSAMT geophysics with historical soil and rock sampling maps from prior work programs will provide key insights to strengthen structural interpretation and target definition. This will be particularly valuable in delineating deeper feeder zones and evaluating the potential western blind target defined by an isolated high-grade vein intercept at depth.
- **Geological mapping:** has confirmed classic low-sulphidation epithermal textures, including crustiform-colloform banding and 'ginguro' sulphide bands, indicating preservation of the high-grade boiling zone.
- **Consultant Technical Advisor:** Dr. Greg Corbett, a globally recognised authority on porphyry–epithermal gold systems, has joined the team as a Consultant Technical Advisor.
- **Next steps:** processing of geophysical and geological data begins this week, with a technical update and target generation announcement expected in the near future.

Sentinel Metals Limited (ASX: SNM) is pleased to announce the successful completion of pre-drilling activities, comprising field and structural mapping, sampling and a hybrid-source audio-magnetotellurics (HSAMT) geophysical survey at the Company's flagship Columbia Gold Project, Montana, USA.

The multi-disciplinary campaign involved 15 personnel on site through November, including geophysical and geological mapping teams, designed to refine the geological model, clarify structural controls and define new high-impact targets for the Company's maiden drill program, comprising ~5,000 metres of HQ diamond drilling.

Managing Director, Mr Matt Herbert, commented:

"The recently completed field program is an important step in unlocking the deeper potential of the Columbia Gold Project. By combining modern HSAMT geophysics with detailed 'boots-on-the-ground' technical mapping, we are successfully constraining high-grade feeder zones that we believe exist at depth and defining potential new, near-surface vein systems.

"Identifying classic epithermal textures such as ginguro bands on surface is highly encouraging, as it confirms we are in the right part of the system to discover high-grade gold. We have delivered this

program safely and on budget, and we are genuinely excited to synthesize these results into compelling targets for our maiden upcoming 5,000m drill program.

Sentinel Metals also wishes to welcome renowned epithermal authority Dr. Greg Corbett into the team.”

HSAMT Geophysical Survey

The Company engaged **TMC Geophysics** to conduct a hybrid-source-audio-magneto-telluric (HSAMT) survey covering 284 stations across the project area. The objective was to map sub-surface resistivity to depths exceeding 800 metres and identify potential shallow feeder zones and silica-rich host rocks. The HSAMT represents best-in-class geophysical surveying for low-sulphidation epithermal deposits.

The campaign was conducted on 100m spaced nodes to constrain the regional geology and then in-filled at 50m node spacings to constrain locally resistant stockwork Adularia zones within the host Andesite. HSAMT was specifically deployed to identify the vertical 'feeder structures' at depth that are believed to be the source of the surface mineralisation. Results are expected shortly.

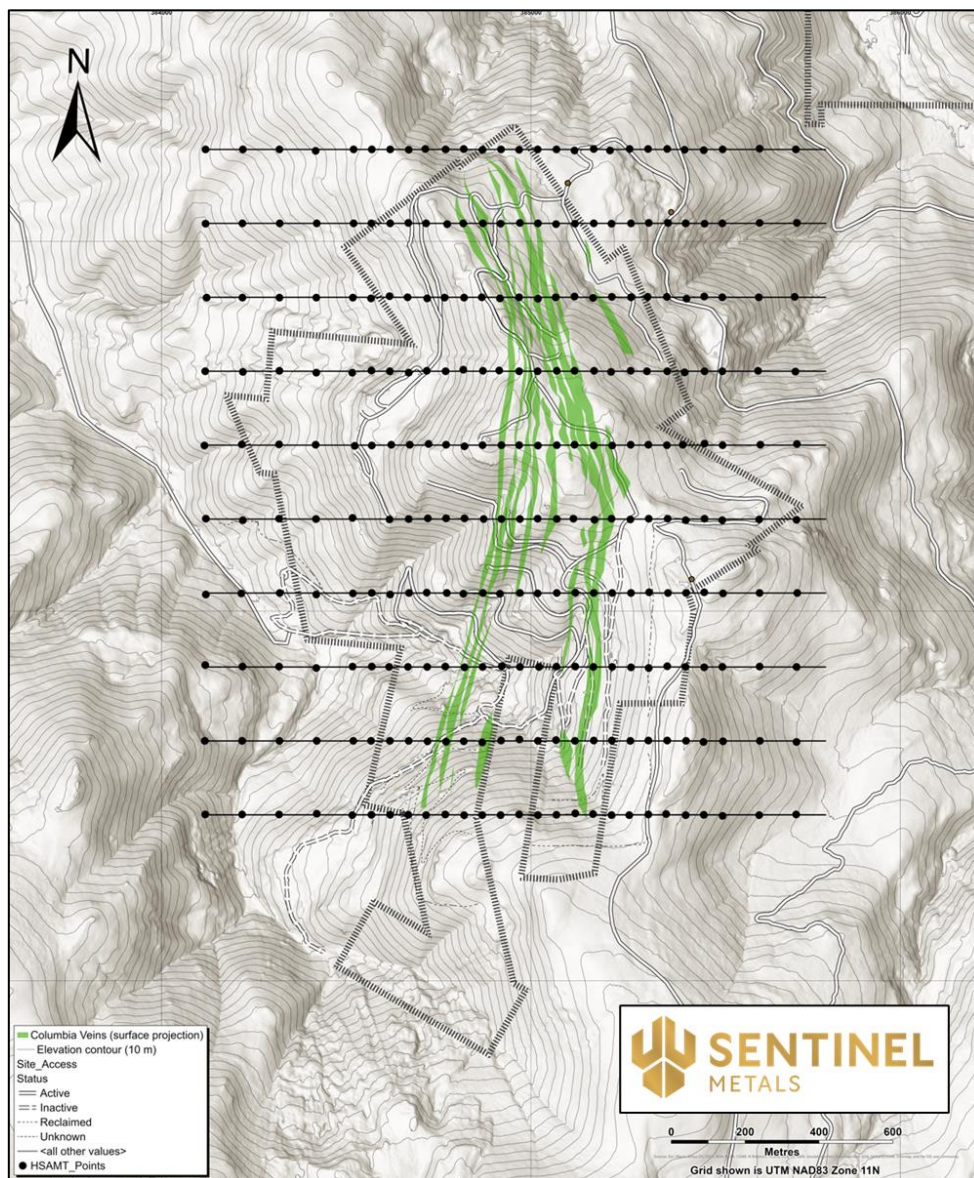


Figure 1: Columbia Gold Project: HSAMT survey station lines and nodes overlaid on topography map.

Structural Mapping and Geological Modelling

Concurrent with the HSAMT geophysics, the Company engaged Dahrouge Geological Consulting to complete detailed structural and geological mapping across the Columbia Project. Work included systematic measurement of vein and fracture orientations, documentation of vein, breccia and hydrothermal textures, mapping of silica-adularia alteration zones, identification of classic epithermal textures and collection of representative rock samples from key structures and mineralised zones.

These datasets are critical for validating geophysical model inputs and tightening the structural framework that controls mineralisation.

Integration of the HSAMT resistivity data with the new mapping, rock sampling results and historical surface sampling will support the development of a refined Mineralisation Model focused on delineating deeper feeder structures and assessing the potential western blind target.

A preliminary field report summarising the mapping program is expected this week.



Figure 2: Sentinel and Dahrouge management outcrop



Figure 3: Weathered Quartz-Adularia stockwork



Figure 4: Weathered Donnelly vein outcrop

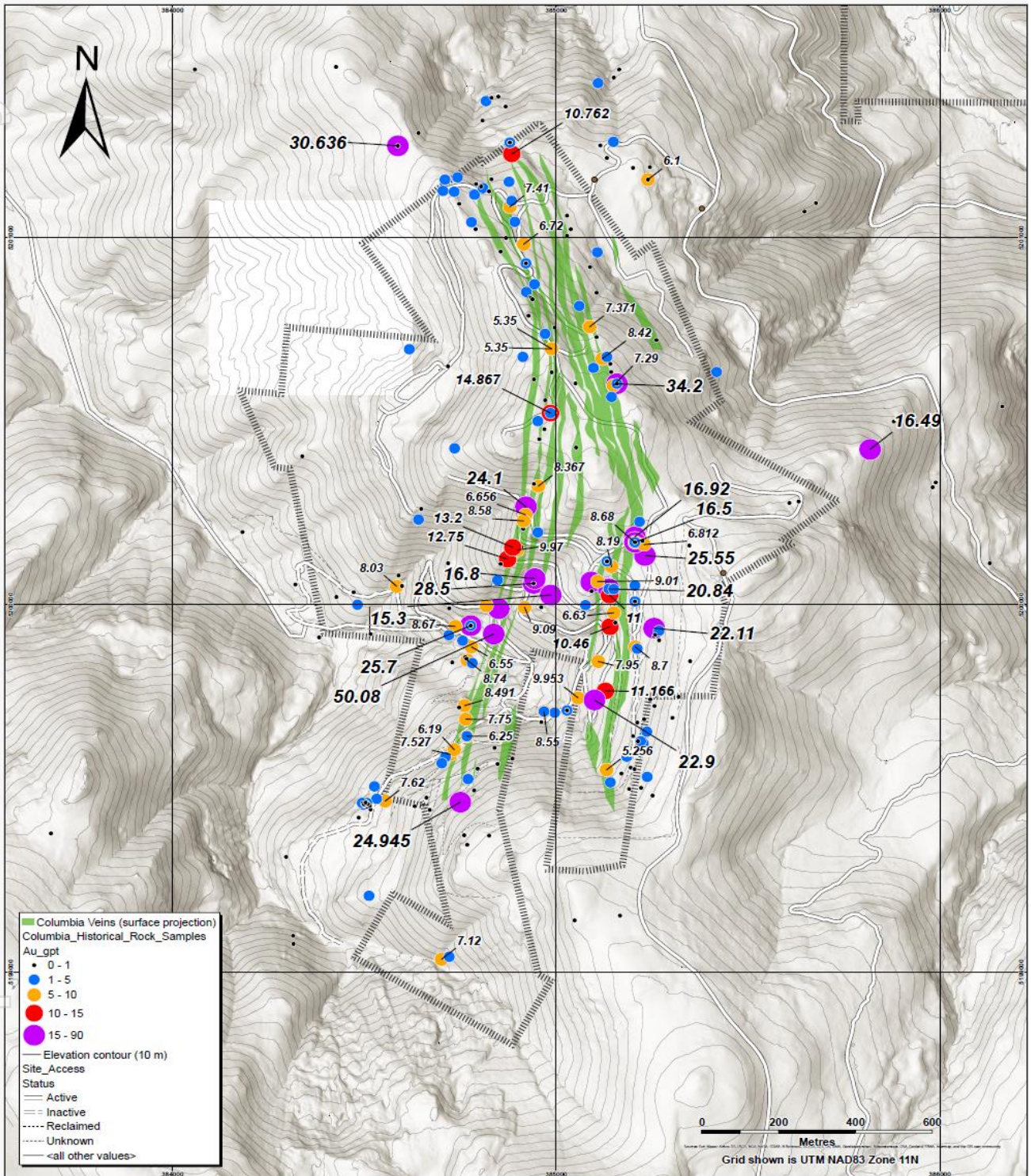


Figure 5. Historical grab samples (Au g/t)

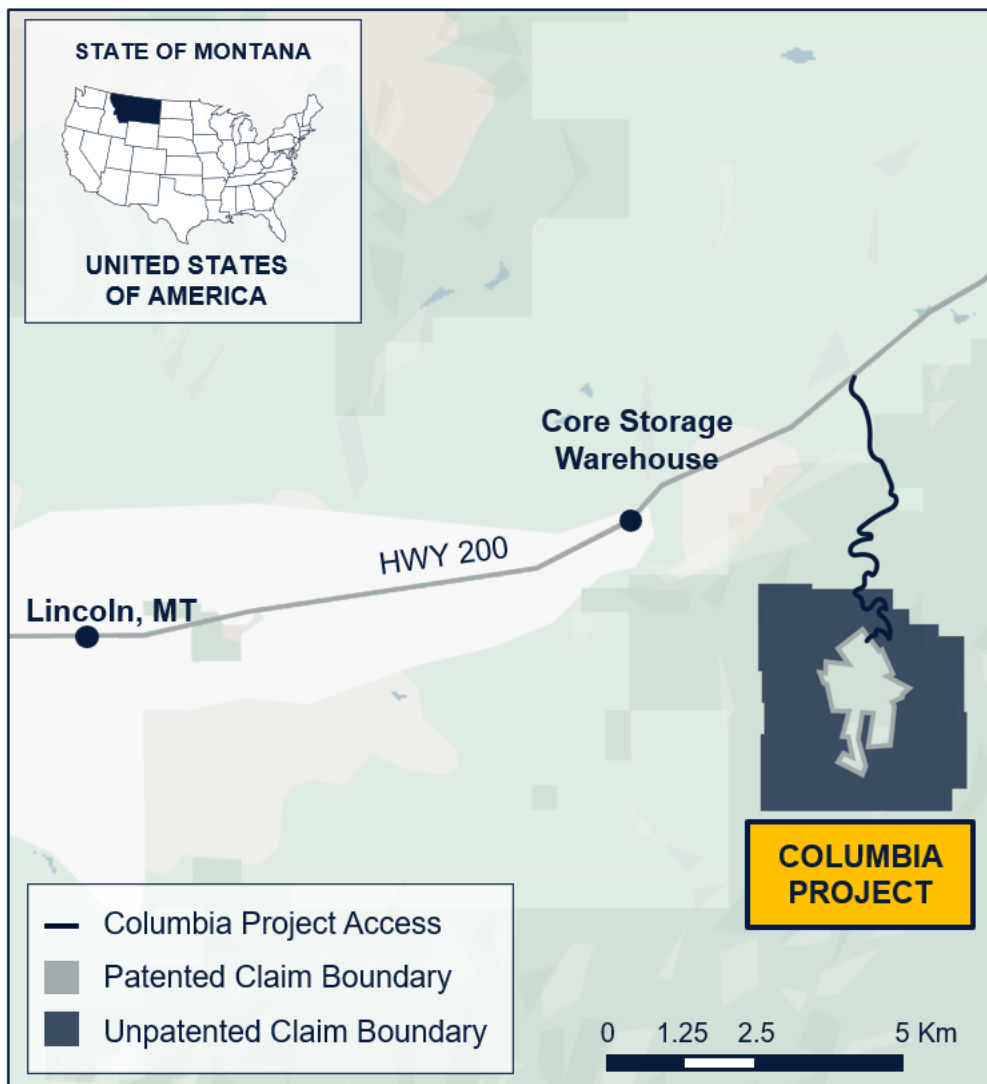


Figure 6. Location of the Columbia Gold Project in Montana, USA

Appointment of Consultant Technical Advisor

The Company is pleased to appoint Dr Greg Corbett, a globally recognised authority on porphyry–epithermal gold systems, as a Consultant Technical Advisor. With a career spanning more than 40 years across over 40 countries, Dr Corbett is best known as co-author of the seminal ‘Corbett & Leach’ geological framework, widely regarded as an industry standard for understanding epithermal systems.

His specialist expertise in low-sulphidation epithermal systems—particularly the structural and fluid-mixing processes responsible for the development of bonanza Au grade ore shoots—will directly contribute to the refinement of our drill-targeting strategy. Dr Corbett’s involvement provides a significant technical strengthening for the Company as it advances the geological interpretation and exploration strategy across the Columbia Project.

Authorised for release by the Board of Directors.

For further information, please contact:

Matt Herbert
Managing Director
matt.herbert@sentinelmetals.com
+1 807 358 6798

Nicholas Read
Read Corporate, media relations
info@readcorporate.com.au
+61 419 929 046

Compliance Statements

The Exploration Results for the Columbia Project were first reported in the Company's prospectus dated 17 September 2025 and released to ASX on 28 October 2025 (**Prospectus**). The Company confirms that it is not aware of any new information or data that materially affects the information relating to the exploration results included in the Prospectus.

Disclaimer and Forward-Looking Statements

This Announcement contains forward-looking statements which are identified by words such as 'believes', 'estimates', 'expects', 'targets', 'intends', 'may', 'will', 'would', 'could', or 'should' and other similar words that involve risks and uncertainties. These statements are based on an assessment of present economic and operating conditions, and on a number of assumptions regarding future events and actions that, as at the date of this Announcement, are expected to take place.

Such forward-looking statements are not guarantees of future performance and involve known and unknown risks, uncertainties, assumptions and other important factors, many of which are beyond the control of the Company, the Directors and management of the Company. These and other factors could cause actual results to differ materially from those expressed in any forward-looking statements.

The Company has no intention to update or revise forward-looking statements, or to publish prospective financial information in the future, regardless of whether new information, future events or any other factors affect the information contained in this Announcement, except where required by law. The Company cannot and does not give assurances that the results, performance or achievements expressed or implied in the forward-looking statements contained in this Prospectus will actually occur and investors are cautioned not to place undue reliance on these forward-looking statements.