



PGE and Gold Drill Program Underway at Norseman

Highlights

- RC Drill program focusing on Platinum Group Elements (palladium and platinum) and gold has commenced at the Norseman Project in Western Australia
- Priority targets are a follow up to recent results¹ including;
 - 7m @ 3.87 g/t 3E² from 28m (NAC759)
 - includes peak gold assay of 1m @ 13.74 g/t Au with 3.21 g/t Pd and 0.2 g/t Pt (from 28m, NAC759)
 - 1m @ 3.35 g/t 3E from end of hole with 0.94 g/t gold and 2.21 g/t Pd (from 72m, NAC756)
 - 1m @ 1.62 g/t 3E with 1.26 g/t gold and 0.28 g/t Pd (from 17m, NAC801)
- 2,000 metre RC drill program expected to run for approximately two weeks
- Galileo's Norseman Project has proven prospectivity for PGEs with the 2022 discovery of 17.5Mt Callisto resource³
- Aim of drilling program is to make new palladium and platinum discoveries to add to the current JORC resource of 1.27Moz PdEq³

Galileo Mining Ltd (ASX: GAL, "Galileo" or the "Company") is pleased to announce a 2,000m RC drilling program targeting Platinum Group Elements (PGEs) and gold has commenced at the Company's Norseman project in Western Australia.

Galileo Managing Director Brad Underwood commented; *"We are pleased to announce RC drilling has commenced at our Norseman project with testing of high priority targets at our Mission Sill South prospect. We will also be testing targets at our Jimberlana South and Callisto North*

¹ See ASX Announcement dated 30 October 2025

² 3E = Pd + Pt + Au expressed in g/t

³ See Table 1 and ASX Announcement dated 2 October 2023 for JORC resource details

prospects in the current drill program. We have previously reported positive signs of mineralisation from each of these prospects, and it is exciting to be undertaking further work so close to our existing Callisto deposit.

We believe the potential for new discoveries at Norseman is high and that the ultimate endowment of this new mineral belt could be far greater than our current 1.2Moz PdEq resource³.

We look forward to the results of the drilling as we search to create value from our extensive 270 square kilometre tenement holding in a highly prospective and underexplored region.”

Fig 1: Commencement of RC drilling at the Norseman PGE and gold project.



Approximately 2,000m of RC drilling is planned for the current program and is scheduled to take two weeks to complete. A key focus area for the program is shallow follow up drilling at the Mission Sill South prospect where 15 drill holes are planned for a total of 1,400m. A further two holes are planned at Callisto North (approximately 400m) and one drill hole at the Jimberlana South prospect (approximately 200m). The location of target prospects relative to the existing Callisto resource is shown in Figure 2. Laboratory assay results are expected to be received six weeks after the end of the drill program.

The Callisto Deposit was discovered in 2022 and has a 17.5Mt resource with palladium-platinum-gold-rhodium-nickel-copper sulphide mineralisation. The Callisto prospective trend extends over 20km, and the Mission Sill trend has over 12km of prospective strike (see Figure 3).

Figure 2: Norseman Project outline (blue line) with recently completed gravity survey (black dashed line), Callisto Deposit (red star), and prospects requiring follow up drilling (grey stars). Upcoming drilling is testing targets at the Mission Sill South, Jimberlana South, and Callisto North prospects.

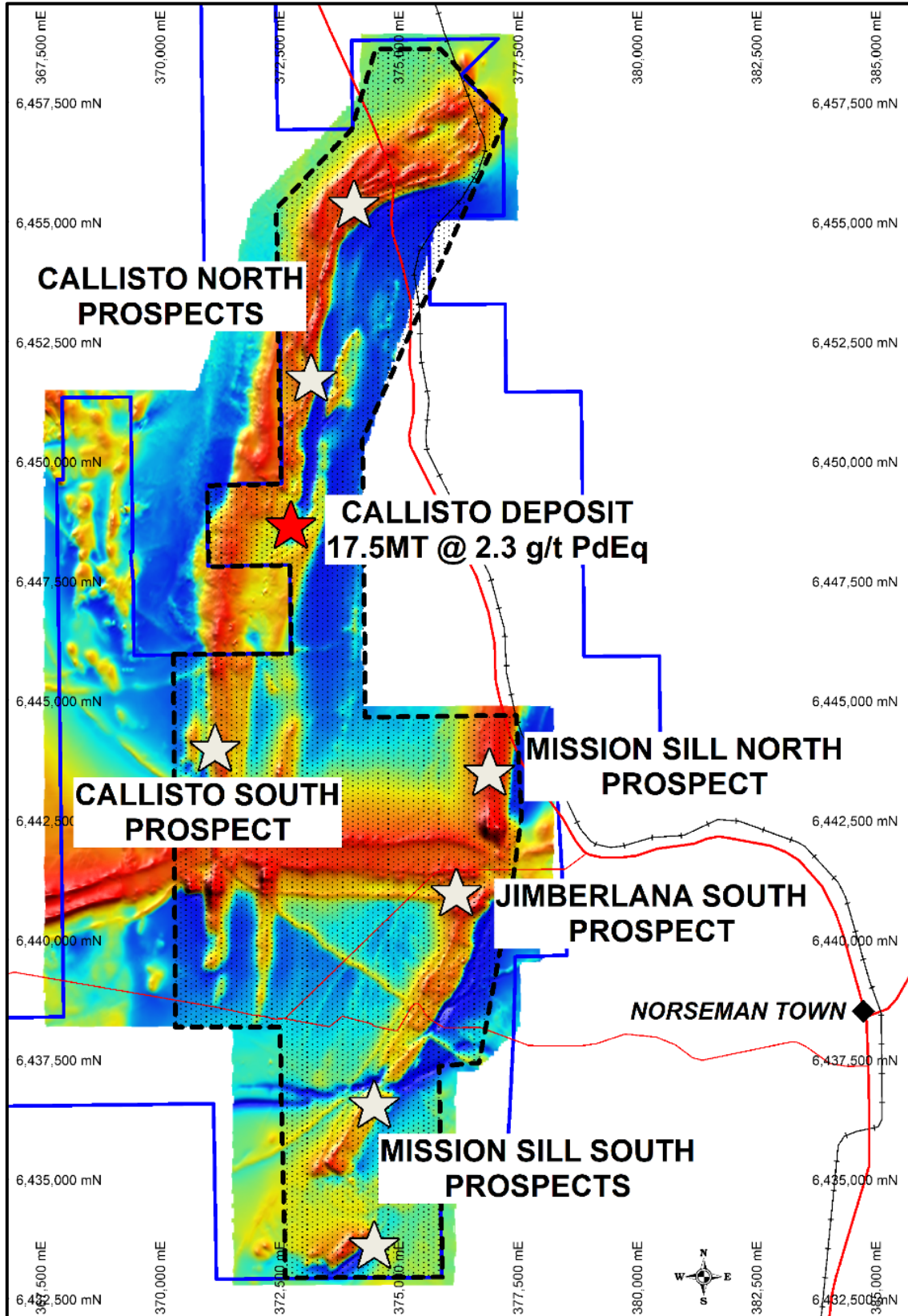
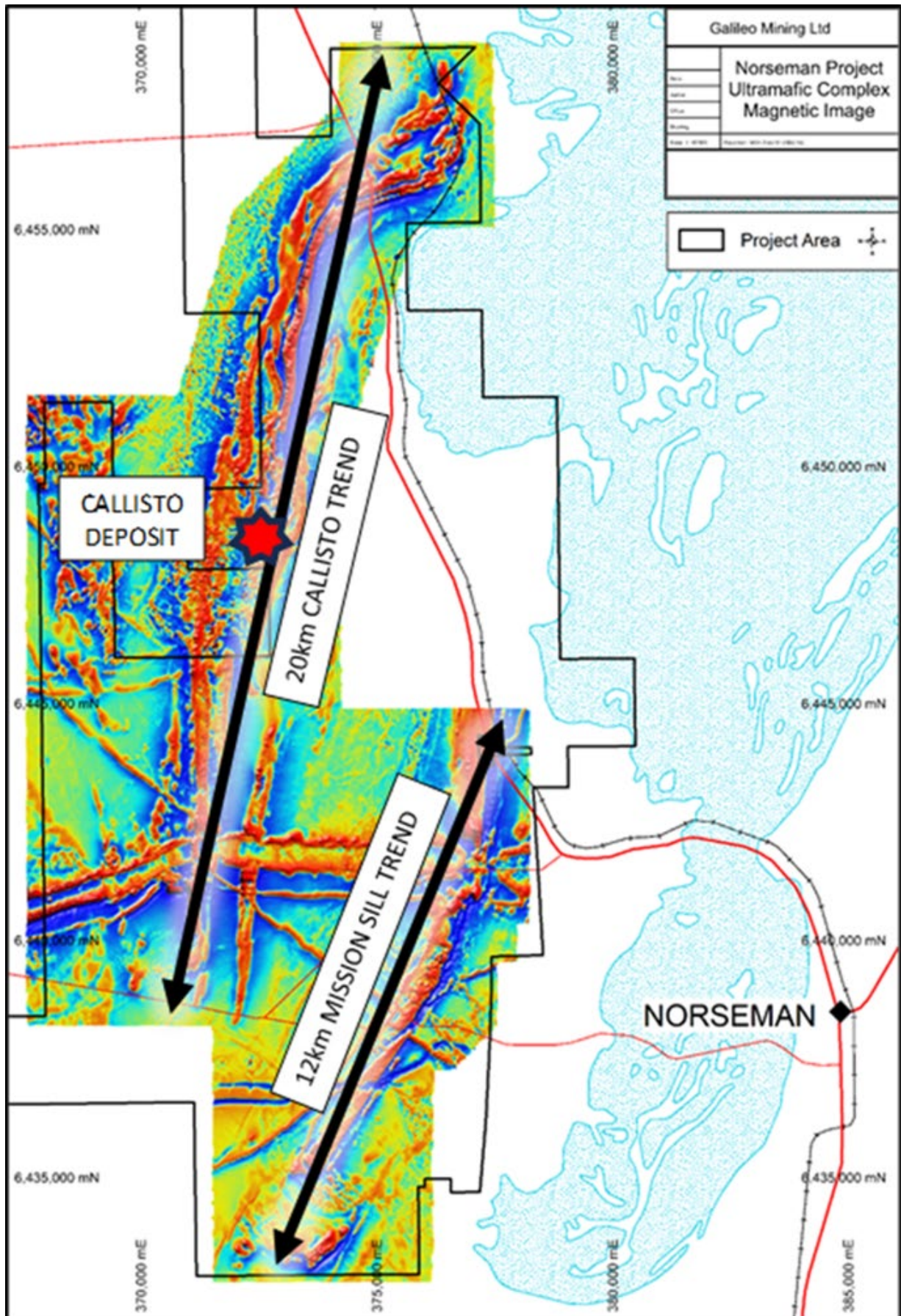
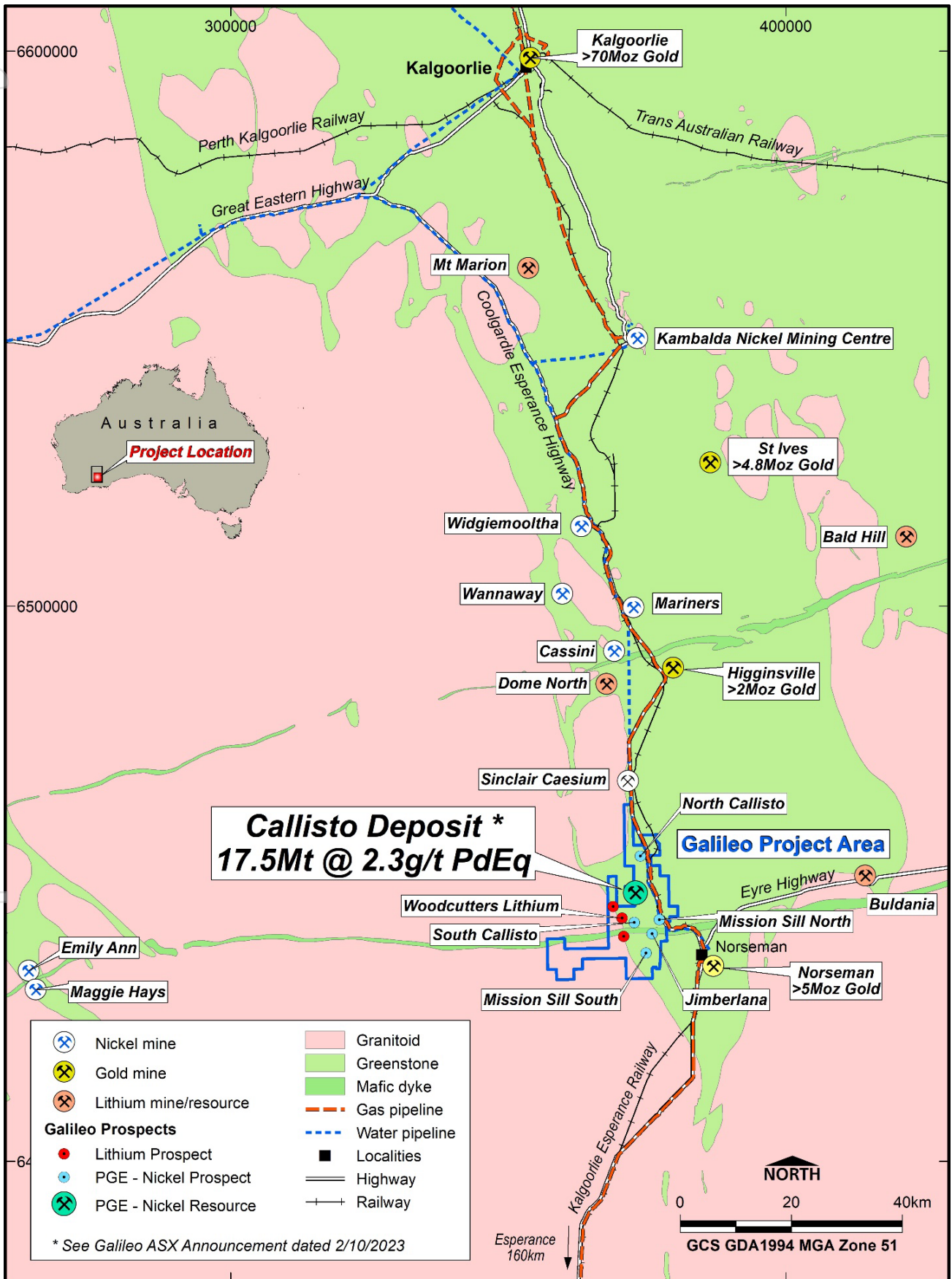


Figure 3 – Callisto deposit and prospective geological trends at Galileo’s Norseman project.



For personal use only

Figure 4 – Norseman project location map with a selection of mines, resources, and infrastructure in the region.



About Galileo Mining:

Galileo Mining Ltd (ASX: GAL) is focussed on the exploration and development of PGE (palladium-platinum), nickel, copper, and cobalt resources in Western Australia. GAL's tenements near Norseman are highly prospective for new discoveries as shown by the Callisto deposit. GAL also has Joint Ventures with the Creasy Group over tenements in the Fraser Range which are prospective for nickel-copper sulphide deposits similar to the operating Nova mine.

Norseman (100% GAL)

The wholly owned Norseman project contains the Callisto Discovery and adjacent regional prospects Jimberlana and Mission Sill with potential for palladium, platinum, nickel, copper, cobalt, and rhodium mineralisation. Galileo's tenure at Norseman comprises mining, exploration, and prospecting licenses covering a total area of 255 km².

The Callisto deposit was discovered in 2022 and is the first deposit of its type identified in Australia, analogous in mineralisation style to the Platreef deposits found in South Africa. An initial Mineral Resource Estimate was reported in 2023 with 17.5 Mt @ 1.04g/t 4E¹, 0.20% Ni, 0.16% Cu (2.3g/t PdEq² or 0.52% NiEq³).

Table 1 - Callisto Deposit Maiden Mineral Resource Estimate (JORC 2012) (see ASX announcement: 2 October 2023)

Reporting Criteria	JORC	Mass (Mt)	Grades									Metal accumulations								
			Pd (ppm)	Pt (ppm)	Au (ppm)	Rh (ppm)	Ni (%)	Cu (%)	PdEq (ppm)	NiEq (%)	4E (ppm)	Pd (Koz)	Pt (Koz)	Au (Koz)	Rh (Koz)	Ni (Kt)	Cu (Kt)	PdEq (Koz)	NiEq (Kt)	4E (Koz)
Above 60mRL and cut-off > 0.5g/t PdEq	Indicated	7.96	0.92	0.16	0.048	0.030	0.22	0.19	2.5	0.58	1.16	235.3	41.5	12.4	7.8	17.3	14.9	639	45.8	296.9
	Inferred	8.76	0.74	0.14	0.043	0.025	0.19	0.14	2.0	0.47	0.94	207.2	38.6	12.1	7.0	16.3	12.3	576	41.3	264.9
	Sub total	16.72	0.82	0.15	0.046	0.027	0.20	0.16	2.3	0.52	1.04	442.5	80.1	24.5	14.8	33.6	27.1	1,216	87.1	561.8
Below 60mRL and cut-off > 1.5g/t PdEq	Inferred	0.76	0.78	0.13	0.036	0.027	0.19	0.14	2.1	0.49	0.97	18.9	3.2	0.9	0.7	1.4	1.1	51	3.7	23.6
	Total	17.48	0.82	0.15	0.045	0.027	0.20	0.16	2.3	0.52	1.04	461.4	83.3	25.3	15.4	35.0	28.2	1,267	91	585.4

Metal equivalent price assumptions of Callisto Resource released on 2nd October 2023

Based on metallurgical test work completed to date, the Company believes that Callisto's mineralisation is amenable to concentration using a conventional crushing, milling and flotation process and has Reasonable Prospects for Eventual Economic Extraction.

Metallurgical recovery assumptions used for metal equivalent value calculations were: Pd – 82%, Pt – 78%, Au – 79%, Rh – 63%, Ni – 77%, Cu – 94%

Metal price assumptions, based on 12 month calculated averages to 11th September 2023, were used for metal equivalent values: Pd – US\$1,600/oz, Pt – US\$975/oz, Au – US\$1,870/oz, Rh – US\$9,420/oz, Ni - US\$23,800/t, Cu – US\$8,420/t. Based on metallurgical test work completed to date, the Company believes that all metals included in the metal equivalent calculation have a reasonable potential to be recovered and sold.

Fraser Range (67% GAL / 33% Creasy Group JV)

Galileo is actively exploring for magmatic massive sulphide- nickel-copper deposits across its Fraser Range tenements covering over 600km² of highly prospective ground in the Albany-Fraser Orogen. The project is well positioned within the nickel-copper bearing Fraser Range Zone, with the Nova-Bollinger mine located between 30km and 90km from Galileo tenure.

¹4E = Palladium (Pd) + Platinum (Pt) + Gold (Au) + Rhodium (Rh) expressed in g/t

² PdEq (Palladium Equivalent) = Pd (g/t) + 0.580 x Pt (g/t) + 1.13 x Au (g/t) + 4.52 x Rh (g/t) + 4.34 x Ni (%) + 1.88 x Cu (%)

³ NiEq (Nickel equivalent) = Ni % + 0.230 x Pd (g/t) + 0.133 x Pt (g/t) + 0.259 x Au (g/t) + 1.04 x Rh (g/t) + 0.432 x Cu (%)

Competent Person Statement

The information in this report that relates to Exploration Results is based on, and fairly represents, information and supporting documentation prepared by Mr Brad Underwood, a Member of the Australasian Institute of Mining and Metallurgy, and a full time employee of Galileo Mining Ltd. Mr Underwood has sufficient experience that is relevant to the styles of mineralisation and types of deposit under consideration, and to the activity being undertaken, to qualify as a Competent Person as defined in the 2012 Edition of the “Australasian Code for Reporting of Exploration Results, Mineral Resources and Ore Reserves” (JORC Code). Mr Underwood consents to the inclusion in the report of the matters based on his information in the form and context in which it appears.

The information in this report that relates to Galileo’s Mineral Resource for the Callisto Deposit is from a previous report released to the ASX by Galileo Mining (2nd October 2023) based on information compiled by Paul Hetherington, a Competent Person who is a Member of the Australasian Institute of Mining and Metallurgy. Mr Hetherington has sufficient experience that is relevant to the styles of mineralisation and types of deposit under consideration, and to the activity being undertaken, to qualify as a Competent Person as defined in the 2012 Edition of the “Australasian Code for Reporting of Exploration Results, Mineral Resources and Ore Reserves” (JORC Code). Mr Hetherington consents to the inclusion in the report of the matters based on his information in the form and context in which it appears. Mr Hetherington has advised that this consent remains in place for subsequent releases by Galileo of the same information in the same form and context, until the consent is withdrawn or replaced by a subsequent report and accompanying consent.

With regard to the Company’s ASX Announcements referenced in the above Announcement, the Company is not aware of any new information or data that materially affects the information included in the Announcements.

Authorised for release by the Galileo Board of Directors.

Investor information: phone Galileo Mining on + 61 8 6285 5622 or email info@galmining.com.au

Media:

David Tasker

Chapter One Advisors

E: dtasker@chapteroneadvisors.com.au

T: +61 433 112 93