

# RC Drilling Commences at the Viking Gold Project

ASX code: MTB

- RC drilling has commenced at the Viking Gold Project, located 30km east of Norseman in Western Australia.
- Drilling is designed to evaluate the resource potential of the high-grade shallow oxide gold zone at the Beaker 2 prospect, where previous drillhole intersections <sup>1 2</sup> include:
  - 6m @ 64 g/t Au from 50m
  - 4m @ 15.4 g/t Au from 40m
  - 3m @ 8.2 g/t Au from 43m
  - 6m @ 5.1 g/t from 141m



*Figure 1. Challenge Drilling RC rig at Beaker 2*

<sup>1</sup> 17 November 2020: ASX Announcement Metal Hawk Limited - "Prospectus".

<sup>2</sup> 21 November 2022: ASX announcement Falcon Metals Limited - "High-grade Gold Confirmed in Assays at Viking".

**Mount Burgess Mining NL** (ASX: MTB, “Mount Burgess” or “the Company”) is pleased to announce the commencement of reverse circulation (RC) drilling at the Viking Gold Project, located 30km southeast of Norseman in Western Australia. The Company recently acquired the Viking Project from Metal Hawk Limited (ASX: MHK) and Falcon Metals Limited (ASX: FAL) who are now both major shareholders of Mount Burgess (see [ASX announcement 18 August 2025](#)).

**Mount Burgess Executive Chairman Steve Lennon commented:**

*“We are delighted to be drilling at Viking and are eager to unlock the potential of this high-grade gold project. This is a significant milestone for the Company, heralding the first deliverable in our new portfolio of projects and marking a very exciting period for Mount Burgess shareholders. We look forward to announcing the results of this work under our new name and identity, Talonx Resources Limited, which was approved by shareholders at our AGM and is in the process of registration.”*

The Viking Gold Project comprises 66km<sup>2</sup> of granted tenure situated within the Albany–Fraser Province, a high-grade metamorphic terrane dominated by gneisses and reworked granitoids. Primary gold mineralisation intersected at Viking is associated with moderately east dipping quartz veins within discrete shear zones in a granite host. The Beaker 2 prospect is the highest priority target and hosts a significant high-grade supergene zone which the Company plans to further test with shallow RC drilling.

The initial 10-hole drilling campaign at Beaker 2 has been designed primarily to evaluate the resource potential of the high-grade, shallow oxide gold zone at the prospect. This has not been the focus of recent exploration activities and Mount Burgess believes it is a prime opportunity to unlock significant near-term value for the Viking Project. Previous drilling programs at Beaker 2 have intersected numerous high-grade shallow gold intercepts in the oxide zone, with limited follow-up drilling.

Significant gold mineralisation intersected by previous drilling at the Beaker 2 prospect includes<sup>1 2</sup>:

- **16VKAC044**      6m @ 64.0g/t Au from 50m
- **17VKAC075**      2m @ 9.0g/t Au from 29m, and  
4m @ 15.4g/t Au from 40m
- **14VKRC017**      3m @ 8.2g/t from 40m
- **14VKRC015**      3m @ 15.3g/t Au from 28m
- **BKA225**            11m @ 3.1g/t Au from 14m
- **VKB2RC004**      6m @ 5.1g/t Au from 141m

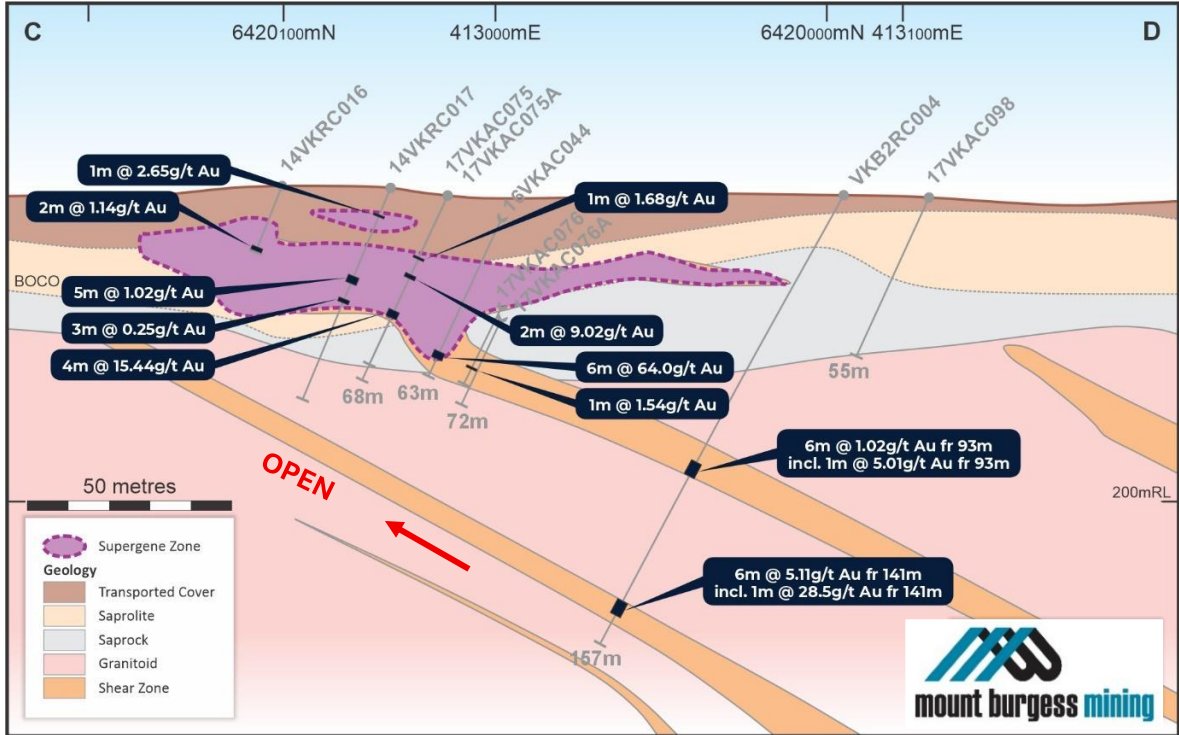


Figure 2. Viking Project: Beaker 2 prospect oblique cross section looking NNE.

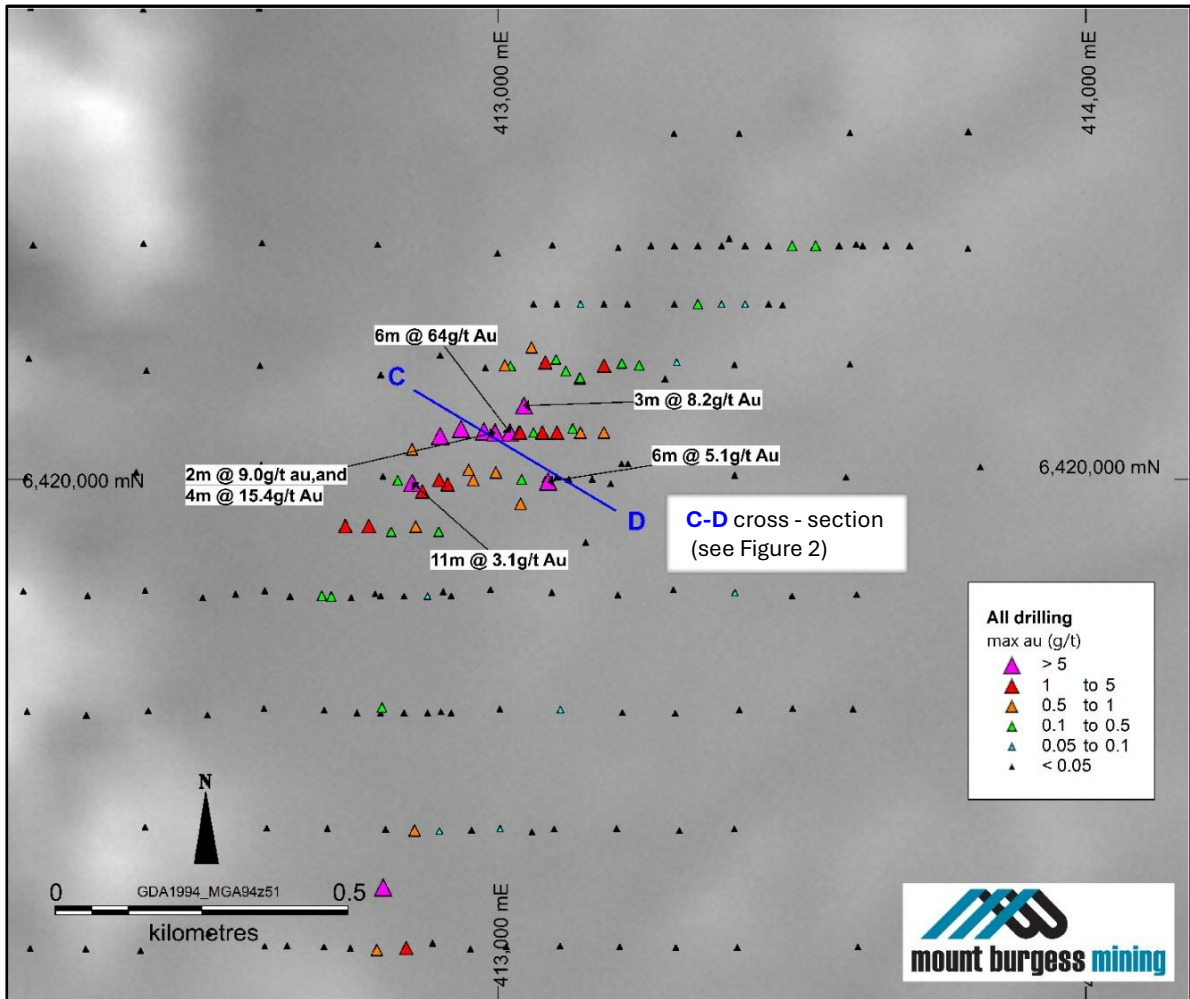


Figure 3. Beaker 2 prospect

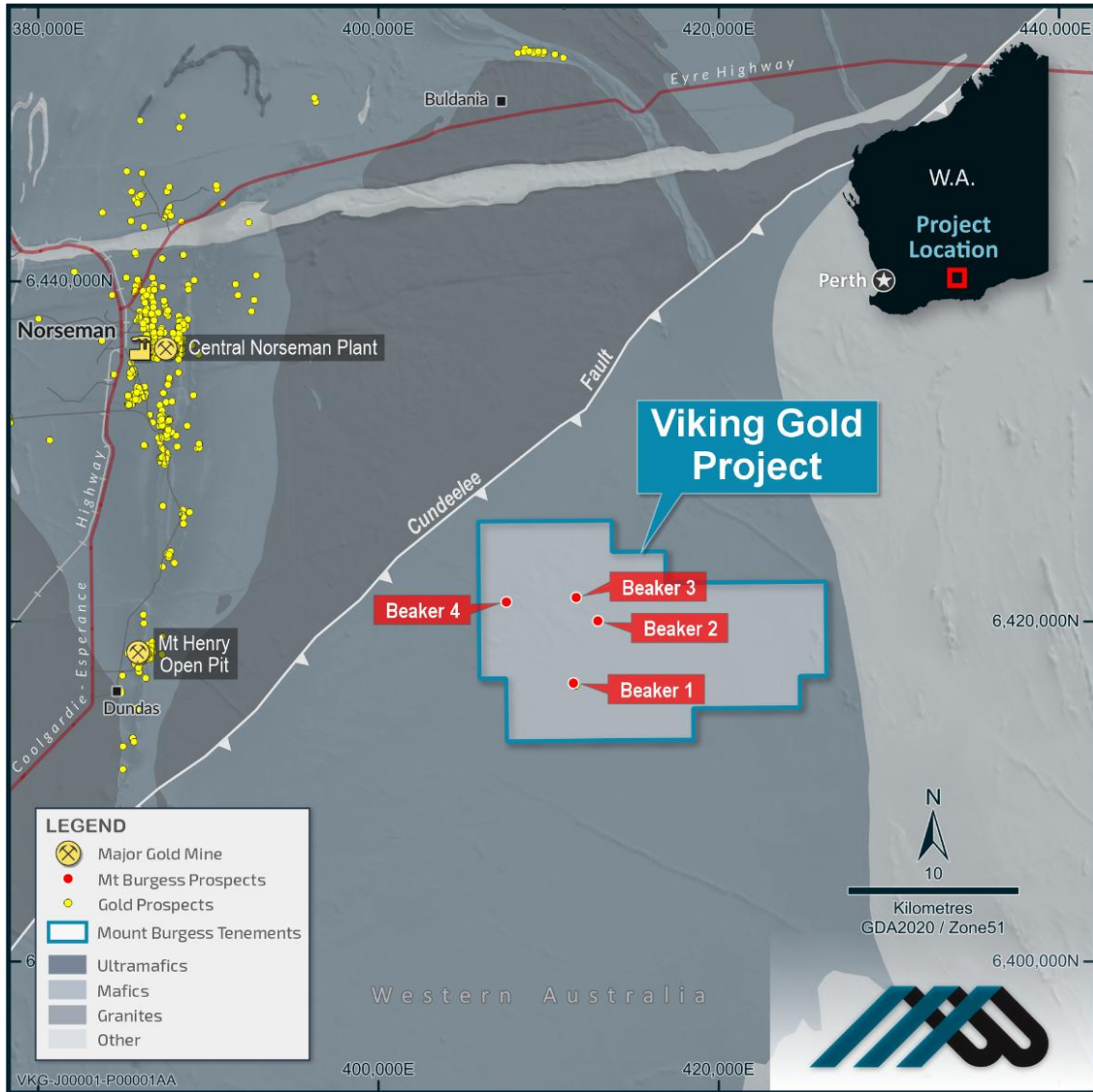


Figure 4. Viking Gold Project

This announcement has been authorised for release by Dr Steve Lennon, Executive Chairman, on behalf of the Board of Mount Burgess Mining NL.

For further information please visit our website at [MountBurgess.com](http://MountBurgess.com) or contact:

**Mount Burgess Mining NL**

ACN: 009 067 476

**Principal & Registered Office:**

Suite 2, Level 1, 1292 Hay St

West Perth 6005

T: +61 478 198 665

E: [mtb@mountburgess.com](mailto:mtb@mountburgess.com)

W: [mountburgess.com](http://mountburgess.com)

**COMPETENT PERSON STATEMENT:**

The information contained within this announcement relates to exploration results based on and fairly represents information reviewed by Mr Will Belbin. Mr Belbin is a qualified geologist, a Director of Mount Burgess Mining NL and has sufficient experience which is relevant to the style of mineralisation and type of deposit under consideration and to the activity which he is undertaking to qualify as a Competent Person as defined in the 2012 edition of the "Australian Code for Reporting Exploration Results, Mineral Resources and Ore Reserves". Mr Belbin consents to the inclusion in the documents of the matters based on this information in the form and context in which it appears. Mr Belbin is a shareholder of Mount Burgess Mining NL.

**FORWARD LOOKING STATEMENT:**

This announcement may contain certain forward-looking statements, guidance, forecasts, estimates, prospects, projections or statements in relation to future matters that may involve risks or uncertainties and may involve significant items of subjective judgement and assumptions of future events that may or may not eventuate (Forward Statements). Forward Statements can generally be identified by the use of forward-looking words such as "anticipate", "estimates", "will", "should", "could", "may", "expects", "plans", "forecast", "target" or similar expressions and may include, without limitation, statements regarding plans, strategies and objectives of management, anticipated production and expected costs. Indications of, and guidance on future earnings, cash flows, costs, financial position and performance are also forward-looking statements. Forward looking statements, opinions and estimates included in this announcement are based on assumptions and contingencies which are subject to change, without notice, as are statements about market and industry trends, which are based on interpretation of current market conditions. Forward looking statements are provided as a general guide only and should not be relied on as a guarantee of future performance.

Leo  
Nam