

## New priority exploration targets confirmed at Bortala Copper Project

### Highlights

- **Multiple high priority targets identified** from a detailed review of geochemical data at the 100% owned Bortala Copper Project, in the Mt Isa district, northern Queensland
- **Two high priority gold and base metals prospects** have been identified – associated with major regional scale structures and favourable host lithologies;
  - **R9 Anomaly** – planned expansion of soil sample area to 6.4m<sup>2</sup> across a historical soil sample area of ~0.7km<sup>2</sup> with copper anomalism up to 740ppm Cu and supporting coincident gold, antimony, lead and zinc anomalies
  - **Nara West Prospect** – a largely untested area of 4.4km<sup>2</sup> targeting potential IOCG and structural hosted copper mineralisation .
  - **Additional four priority prospects identified across the Bortala Project**
- Aruma is **targeting potential regional scale gold and base metal mineralisation**, including **iron oxide copper gold (IOCG), sediment hosted** and **structural hosted copper**.
- **None of the identified anomalies have been drill tested**, and they **represent outstanding initial exploration opportunities**.
- **Next Steps – Proposed infill soil sampling program to refine anomalies, to commence Q1 2026** - program designed to refine targets for the first-phase of drilling (subject to results).

**Aruma Resources Limited (ASX: AAJ) (Aruma or the Company)** is pleased to announce that it has confirmed multiple new, priority exploration targets at its 100%-owned Bortala Project (EPM28271) in the northern Mt Isa region of Queensland.

The targets have been generated from a comprehensive technical review of historical exploration data for the Bortala Project and has further confirmed the R9 Anomaly and Nara East Prospect as the initial highest priority exploration targets at Bortala, while also identifying an additional four priority targets across the Project area.

#### Aruma Resources Ltd

ACN 141 335 364  
ASX: **AAJ**

#### Issued Capital

412,825,268 Shares  
54,930,003 Listed options  
173,397,623 Unlisted options  
19,700,000 Performance rights

#### Business Office

Units 8-9, 88 Forrest Street  
Cottesloe WA 6011  
T: + 61 8 9321 0177  
E: info@arumaresources.com

#### Board and Management

JAMES MOSES – Non-Executive Chairman  
GRANT FERGUSON – Managing Director  
BRETT SMITH – Non-Executive Director

**Aruma Resources managing director Grant Ferguson said:**

*"Our team has completed a thorough technical review and initial field reconnaissance at the Bortala Copper Project, delivering a strong pipeline of well-defined targets in a highly prospective part of the Mt Isa Eastern Succession. By integrating re-processed historical geochemical and drilling data with new structural interpretations, we have quickly established a compelling portfolio of copper targets.*

*The priority R9 Anomaly and Nara East prospects are now clearly delineated and ready for systematic follow-up work. The detailed soil sampling programs at these target areas are fully planned, and we look forward to commencing soil sampling and geophysics in Q1, 2026 once final approvals are received. This positions Bortala to deliver steady, high-quality exploration news flow and a strong start to field activities in 2026, in close proximity to operating mines and infrastructure."*

Based on the positive outcomes of the technical review, Aruma plans to undertake a detailed soil sampling program in the following quarter upon receipt of requisite approvals. The program is designed to refine the target anomalies to vector in on a planned first-phase drilling program (subject to results).

Sampling is planned to be undertaken on a 200m x 50m infill soil sampling grid. Material results will be reported when available.

The Bortala Project is located in the northern area of the Mt Isa region, immediately south of 29Metals' (ASX: 29M) high-grade Capricorn Copper Mine (Combined Mineral Resource Estimate of 64.8Mt @ 1.8% Cu – 29M: ASX announcement 21 May 2024), and is interpreted as being prospective for uranium, stratiform copper-gold and iron-oxide copper gold (IOCG) mineralisation.

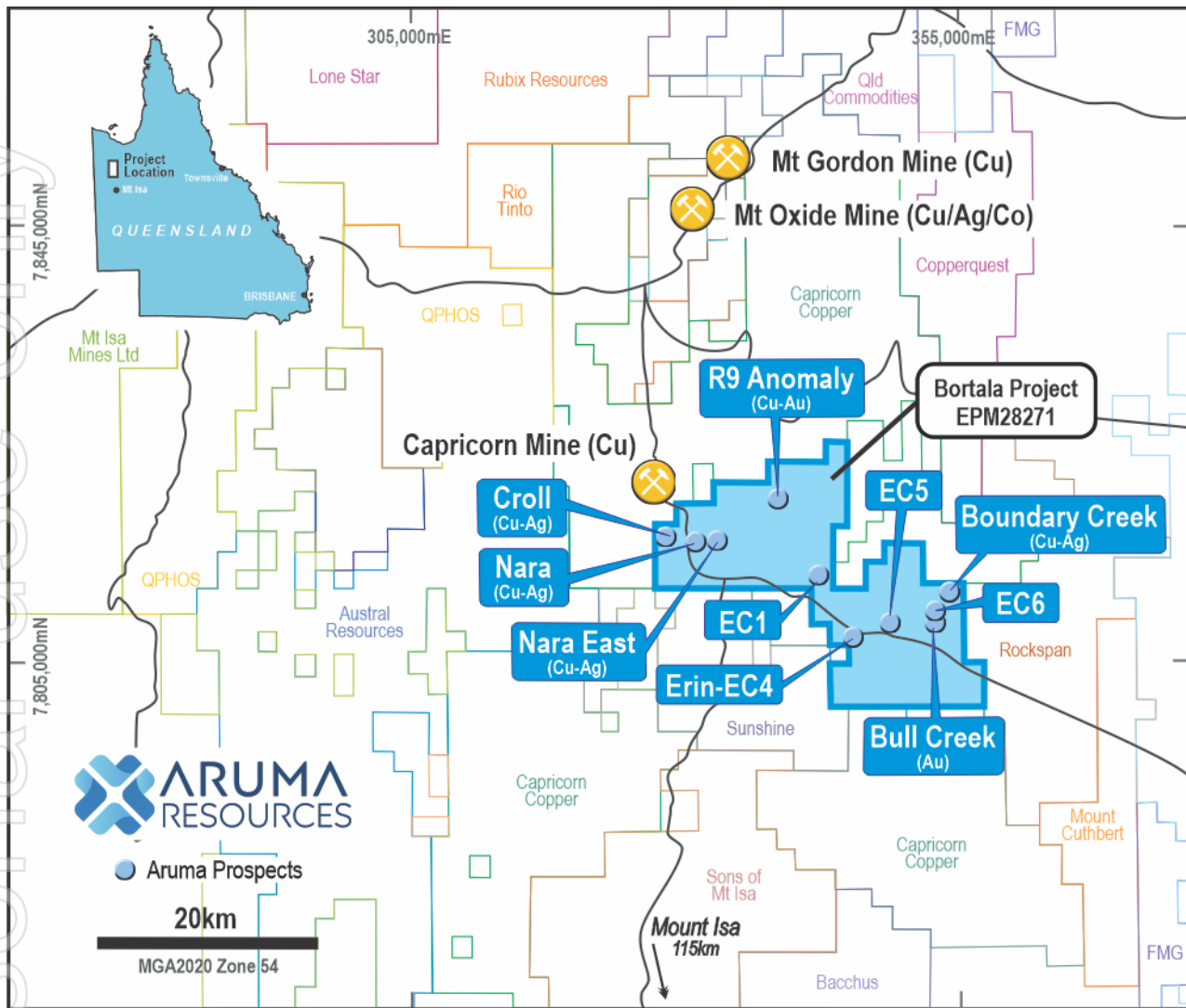


Figure 1 - Bortala Project License and Prospect Map

## R9 Anomaly Prospect

The R9 Anomaly was initially defined by Ashton Mining Limited in 1989 through soil geochemical sampling, identifying a north-south-trending copper anomaly with a strike extent of approximately 400m. This anomaly remains open to the east and south and is situated approximately 120m west of a polyphase quartz-vein breccia system exposed at surface over a strike length of 420m and attaining a maximum true width of 10m (Figure 2).

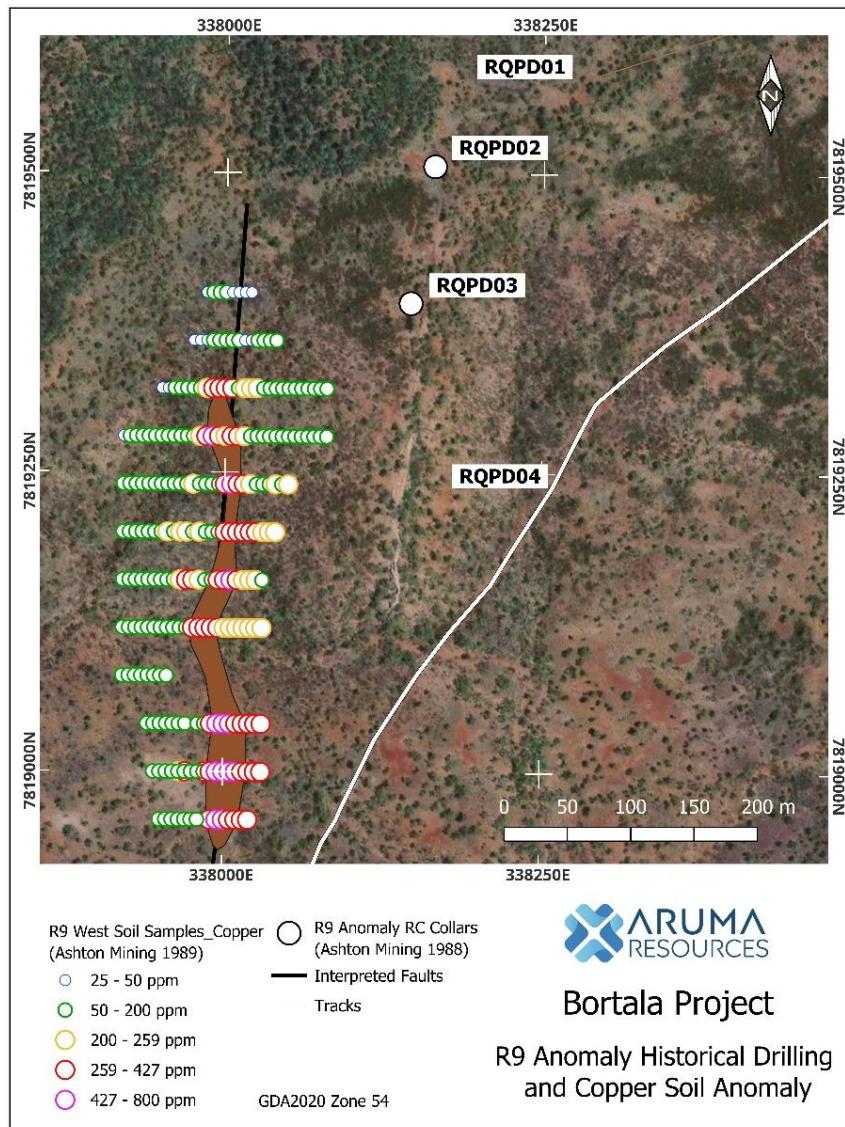


Figure 2 – R9 Anomaly Prospect at Bortala Project showing historic drilling and sampling locations<sup>1</sup>

The outcropping quartz-vein breccia was tested by Ashton Mining Limited in 1988 with a total of 224m of percussion and diamond drilling. The most significant gold intercept reported was 2m at 0.25 g/t Au from 46m depth in reverse circulation (RC) drillhole R9PDH3<sup>1</sup>.

A recent reassessment of historical soil geochemical data has confirmed a coherent, multi-element (Cu-Au-Pb-Zn) anomaly exhibiting strong spatial coincidence. This anomaly is interpreted to reflect a significant second order, north-south structure developed subsidiary to a major regional northwest-southeast fault system.

<sup>1</sup> ASX:AAJ Announcement 2 July 2024 - High Priority Targets Identified at Bortala Copper Project Ashton Mining Limited. (1989). Combined Final Report for the Period 9th October 1987 to 27th February 1989. Authorities to Prospect 4993M-4997M (inclusive), 4999M, 50880M, 5125M, and 5211M Camooweal. Submitted to the Department of Mines, June 1989.

Table 1 - Significant historical drill intercepts from the R9 Anomaly Prospect at the Bortala Project.<sup>2</sup>

PROSPECT	DRILL TYPE	HOLE_ID	EASTING	NORTHING	FROM	TO	SIGNIFICANT INTERSECTION
R9 ANOMALY	RC	RQPD3	338137	7819389	29	43	14m at 0.21% Cu
R9 ANOMALY	RC	RQPD3	338137	7819389	46	48	2m at 0.25g/t Au
R9 ANOMALY	RC	RQPD3	338137	7819389	45	49	4m at 0.36% Pb
R9 ANOMALY	RC	RQPD3	338137	7819389	41	46	5m at 0.44% Zn
R9 ANOMALY	RC	RQPD4	338172	7819228	11	14	3m at 0.15% Cu

Table 2 - Ashton Mining 1988 drill hole details<sup>2</sup>

HOLE_ID	DRILL TYPE	EASTING	NORTHING	RL	AZI/DIP	DEPTH	COMMENT
RQPD1	RC	338160	7819585	291	090/-60	36	
RQPD2	RC	338143	7819506	291	090/-60	60	
RQPD3	RC	338138	7819387	288	090/-60	54	Ended due to water
RQPD4	RC	338186	7819215	285	270/-60	74	

### Sampling Program Details

In response to these findings, the Company has designed an expanded soil-sampling program covering an area of 6.5km<sup>2</sup>. The new grid is configured to incorporate and infill the historical sampling footprint while extending coverage across the interpreted major northwest-southeast controlling structure.

The R9 Anomaly prospect is considered prospective for structurally hosted copper mineralisation of the style currently exploited at the Capricorn Copper Mine, located 19km west of the R9 Anomaly (Figure 1). A total of 670 soil samples from a 200m x 50m grid are planned to be collected across the prospect.

<sup>2</sup> ASX:AAJ Announcement 2 July 2024 - High Priority Targets Identified at Bortala Copper Project

## **Nara East Prospect**

The newly identified Nara East Prospect is situated approximately 4km southeast of the Capricorn Copper Mine (Figure 1). This prospect has been elevated to high-priority status following a detailed structural geology review, integrated with re-evaluation of limited historical soil, stream-sediment, and rock-chip geochemical data from the area.

The Nara East Prospect is interpreted to represent a structurally complex domain with favourable architecture for the development of structurally controlled copper mineralisation. Additionally, a noted alteration signature in the volcanics is indicative of intense sodic-calcic alteration and may indicate a potential for iron oxide copper gold alteration (IOCG).

A systematic soil-sampling programme has been designed for the prospect, comprising 400 samples to be collected on a regular 200m × 50m grid.

The sampling target area is regarded as highly prospective for structurally controlled copper and IOCG mineralisation styles. These deposit classes are recognised globally for their potential to host large-tonnage, high-grade orebodies.

## **Mt Isa Regional Perspective**

The Mount Isa Inlier represents a world-class metallogenic province characterised by numerous large-scale, structurally hosted copper and IOCG systems. Within the Eastern Fold Belt (particularly the Cloncurry–Selwyn district) and parts of the Western Succession, protracted tectono-magmatic activity during the Isan Orogeny (ca. 1600–1500 Ma) produced regional-scale fault architectures and associated Na-Ca ± K-Fe alteration assemblages that served as conduits and traps for metalliferous fluids. These processes have given rise to Tier-1 deposits such as Ernest Henry and a spectrum of structurally controlled high-grade copper systems (e.g., Mount Isa Cu orebodies, Mammoth, Esperanza and Lady Annie).

Consequently, the combination of favourable structural preparation, demonstrated metal endowment and recurrent association with IOCG and fault-hosted copper mineralisation within the inlier underpins the exceptional prospectivity of the identified targets.

This announcement has been authorised for release by the Board of Aruma Resources Ltd.

**ENDS**

**For further information, please contact:**

**Grant Ferguson**

**Managing Director**

Aruma Resources Limited

Telephone: +61 8 9321 0177

E: [info@arumaresources.com](mailto:info@arumaresources.com)

**About Aruma Resources**

Aruma Resources Limited (ASX: AAJ) is an ASX-listed minerals exploration company focused on the exploration and development of a portfolio of prospective projects in high-demand commodities – copper and uranium - in world-class mineral belts, in South Australia and Queensland. It also holds gold, lithium and REE prospective projects in Western Australia.



**Figure 3** - Aruma Resources project portfolio.

### **Competent person statement**

The information in this release that relates to Exploration Results, Mineral Resources or Ore Reserves is based on information compiled by Grant Ferguson who is a Fellow of the Australian Institute of Geoscience (AIG). Mr Ferguson is Managing Director and a full-time employee of the Company. Mr Ferguson has sufficient experience that is relevant to the style of mineralisation and type of deposit under consideration and to the activity being undertaken to qualify as a Competent Person as defined in the 2012 Edition of the 'Australasian Code for Reporting of Exploration Results, Mineral Resources and Ore Reserve'. Mr Ferguson consents to the inclusion in the release of the matters based on his information in the form and context in which it appears. All exploration results that have been reported previously and released to ASX are available to be viewed on the Company website [www.arumaresources.com](http://www.arumaresources.com). The Company confirms it is not aware of any new information that materially affects the information included in the original announcement. The Company confirms that the form and context in which the Competent Person's findings are presented have not been materially modified from the original announcements.

### **Forward Looking Statement**

Certain statements contained in this document constitute forward looking statements. Such forward-looking statements are based on a number of estimates and assumptions made by the Company and its consultants in light of experience, current conditions and expectations of future developments which the Company believes are appropriate in the current circumstances. These estimates and assumptions while considered reasonable by the Company are subject to known and unknown risks, uncertainties and other factors which may cause the actual results, achievements and performance of the Company to be materially different from the future results and achievements expressed or implied by such forward-looking statements. Forward looking statements include, but are not limited to, statements preceded by words such as "planned", "expected", "projected", "estimated", "may", "scheduled", "intends", "anticipates", "believes", "potential", "could", "nominal", "conceptual" and similar expressions. There can be no assurance that Aruma plans to develop exploration projects that will proceed with the current expectations. There can be no assurance that Aruma will be able to conform the presence of Mineral Resources or Ore Reserves, that any mineralisation will prove to be economic and will be successfully developed on any of Aruma's mineral properties. Investors are cautioned that forward looking information is no guarantee of future performance and accordingly, investors are cautioned not to place undue reliance on these forward-looking statements