

8 December 2025

## ASX Announcement

### North Achilles (NSW) UFF Soil Results

- **Phase 1 Soil Sampling at the North Achilles project has been completed with samples analysed at LabWest via the Ultrafine™ (UFF) approach**
- **Results outline precious and base metal anomalies along both the Uabba and Kilparney Faults, within the broader Achilles Shear Zone**
- **UFF method demonstrates potential to vector towards undercover targets with follow up soil sampling planned over the coming months to further define drill targets**
- **The successful UFF campaign enhances prospectivity of the North Achilles project, having never been previously explored**

#### Regener8 Managing Director, Stephen Foley, comments:

“It’s excellent to receive the soil sampling results from Regener8’s initial exploration fieldwork at the North Achilles project, with the program executed and results received within 3 months from initial meeting with the landholder. The UFF program has highlighted clear anomalies along and within the Achilles shear, Uabba and Kilparney faults, and interpreted splays.

The Ultrafine™ method is demonstrating exactly why it was chosen – the potential to generate anomalies and targets under shallow cover, which is the case at North Achilles. The results are exciting as the ground has never seen any previous exploration undertaken and is located only 2km along shear from AGC’s Achilles discovery. These initial results provide a compelling case for follow up work which we look forward to accelerating over the coming months.”

#### Phase 1 UFF Soil Sampling

The North Achilles project (southern Cobar Basin, NSW - Figure 1) is located immediately adjacent to tenements held by Australian Gold and Copper Ltd (ASX:**AGC**) and approximately 2.2km north along strike from the recent Achilles discovery. AGC have achieved outstanding drill results at Achilles including 5 metres @ 16.9g/t Au, 1,667g/t Ag, 0.4% Cu & 15% Pb + Zn (A3RC030 - AGC ASX Ann. 04.06.2024).

#### Regener8 Resources HQ

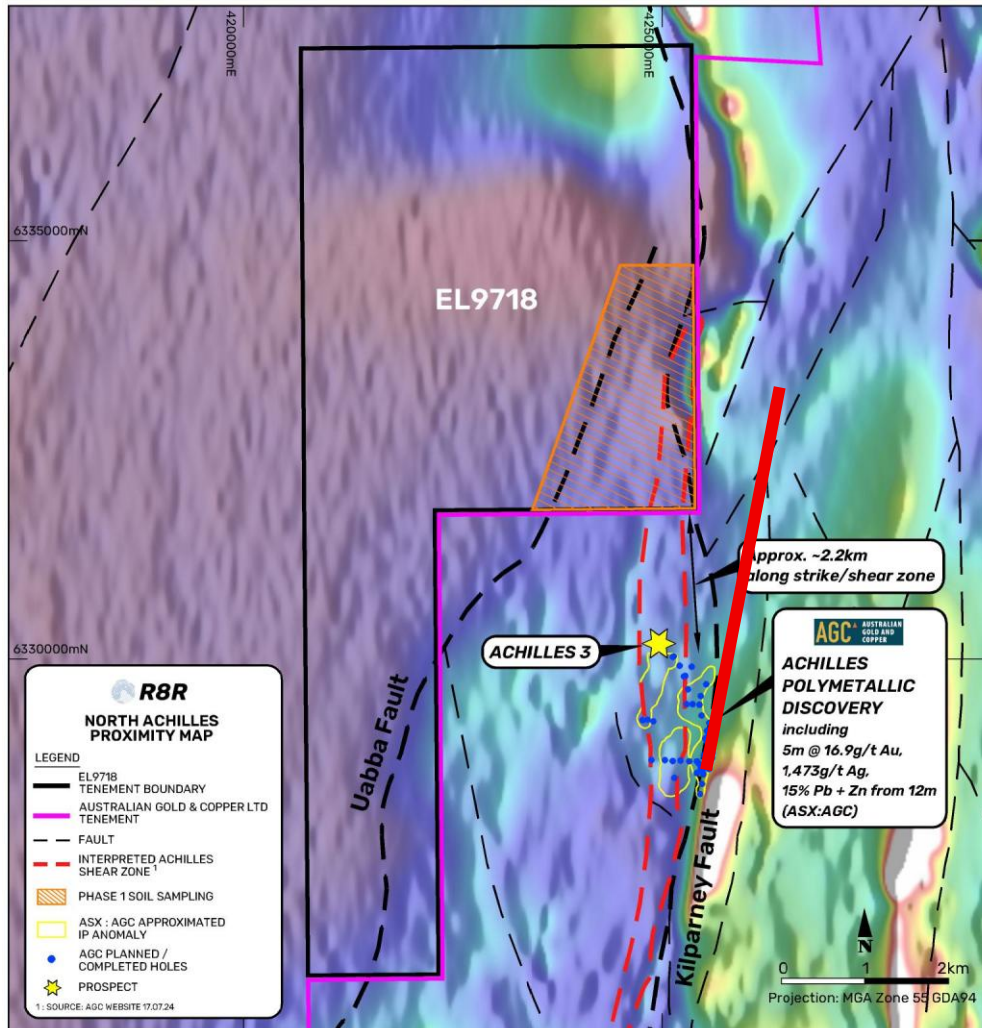
Unit 1, 4 Burgay Court  
Osborne Park WA 6017

P +61 475 296 121  
E hello@regener8resources.com.au



For personal use only Highlights

Recently, Regener8 undertook an initial soil sampling campaign over the south-eastern portion of the tenement (EL9718) on 100m x 200m spacing (ASX Ann 15.10.2025) collecting a total of 207 samples. This was the first time any significant exploration has ever been undertaken on this ground, believed to be a result of the shallow cover present in the project area that obscures the prospective basement. Samples were sent to Labwest Mineral Analysis (Perth) and were analysed via the Ultrafine™ (UFF) approach.



**Figure 1:** North Achilles project area with soil sampling zone displaying proximity to AGC's Achilles discovery over reprocessed TMI (ASX Ann 25.02.25)

### Phase 1 UFF Results

The UFF soil geochemistry results define distinct areas of anomalism characterised by coincident elevated Cu–Au–Ag–Pb geochemistry above the 90th percentile threshold (Figure 2), consistent with known mineral systems within the Cobar district. The multi-element anomalies show scale with individual zones of anomalism extending up to 1.5km in length.

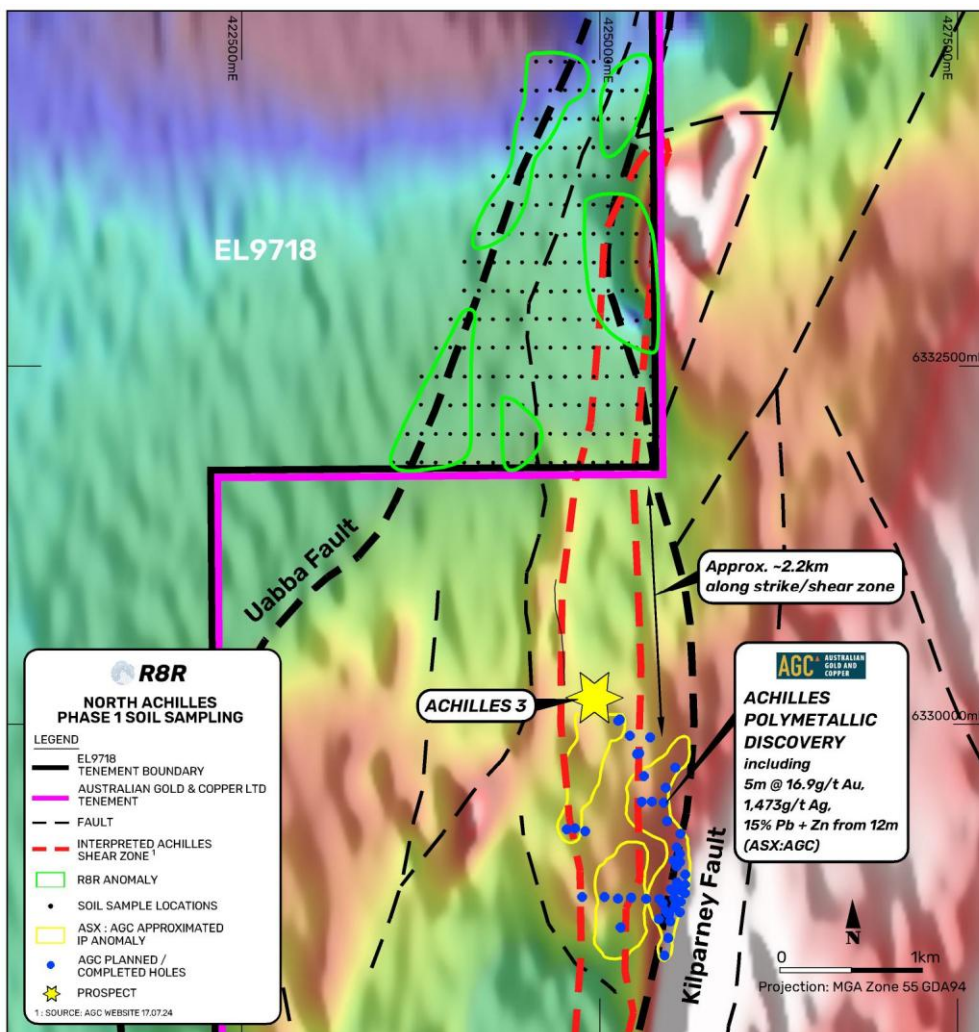


For personal use only

The multi-element footprint identified at North Achilles is similar to the major polymetallic systems of the Cobar region, including the Peak Mine and former Hera Mine operated by Aurelia Metals (ASX: AMI), as well as the Federation deposit held by Aurelia Metals (ASX: AMI). These deposits exhibit:

- fault-controlled polymetallic mineralisation, typically localised along basin-bounding splays and second-order structures
- Au–Ag–Cu–Pb–Zn geochemical halos surrounding high-grade ore, and
- strong pathfinder associations including As–Sb–Bi–Mo ± W, which expand the detectable footprint beyond direct ore metals

North Achilles displays similar element associations and structural setting, strengthening confidence in the exploration model.



**Figure 2:** North Achilles (EL9718) soil sample locations and 90<sup>th</sup> percentile Cu-Au-Ag-Pb anomalies over TMI RTP magnetics.



For personal use only

Targeted infill and extension soil sampling across the remainder of the tenement is being planned for early CY2026, to be completed ahead of additional exploration targeting methods such as IP, with the intention of progressively advancing North Achilles toward a drill-ready status.

Relevant ASX Announcements:

- 15.10.2025 “Soil Sampling Completed at North Achilles Project”

This ASX Announcement has been authorised for release by the Board.

**For further information, please contact:**

Stephen Foley  
Managing Director  
Tel: +61 475 296 121

*Information in this release that relates to Exploration Results is based on information reviewed by Mr Nicholas Walker of Newexco Exploration Pty Ltd. Mr Walker is engaged by Regener8 Resources NL as an independent consultant. Mr Walker has sufficient experience which is relevant to the style of mineralisation and type of deposit under consideration and to the activity being undertaken to qualify as a Competent Person as defined in the 2012 Edition of the ‘Australasian Code for Reporting of Exploration Results, Mineral Resources and Ore Reserves’. Mr Walker is a Member of AIG. Mr Walker consents to the inclusion in this release of the matters based on his information in the form and context in which it appears.*



For personal use only

## Background Regener8 Resources Projects

Regener8's diverse and future facing exploration project portfolio consists of three key projects across Australia:

1. **North Achilles Project, South Cobar, NSW:** Polymetallic (Au, Ag, Pb, Zn)

Located immediately beside and along trend of Australian Gold and Copper's (ASX:AGC) Achilles discovery with outstanding results including **5 metres @ 16.9 g/t Au, 1,667 g/t Ag, 0.4% Cu & 15% Pb + Zn** (A3RC030 - AGC ASX Ann. 04.06.2024)

2. **East Ponton Project, WA:** Critical Minerals (Ni, Co) and Au

Located approximately 220km east of Kalgoorlie and 70 km southeast of Deep Yellow's (ASX:DYL) polymetallic Mulga Rocks project. The East Ponton Project is located on the same paleochannel system as Mulga Rocks, with recent drilling confirming a prospective sedimentary sequence for paleochannel-hosted Ni and Co. East Ponton is also prospective for paleochannel gold with broad low grade mineralisation up to 15m @ 0.25 g/t Au intercepted in recent drilling.

3. **Kookynie Gold Project, WA:** Au

Sitting within the Kookynie Gold district north of Kalgoorlie, the project hosts substantial historical workings and exploration with intersections including **2m @ 70.5 g/t Au** (RC38), **2m @ 15.4 g/t Au** (RC315) and **2m @ 11.32 g/t Au** (RC391). Regener8's 2023 program found encouraging results which included **5m @ 3.18 g/t Au** (NGRC017) and **2m @ 7.77g/t Au** (including **1m @ 14.8 g/t Au** in NGRC037).



**Figure A:**  
Regener8 Exploration Portfolio  
Project Locations

The Company confirms that all material assumptions and technical parameters underpinning the exploration results in this report continue to apply and have not materially changed. The Company is not aware of any new information or data that materially affects the information included in this release.



**1. JORC CODE, 2012 EDITION – TABLE 1**

Section 1 Sampling Techniques and Data		
(Criteria in this section apply to all succeeding sections.)		
Criteria	JORC Code explanation	Commentary
Sampling techniques	<ul style="list-style-type: none"> <li>Nature and quality of sampling (eg cut channels, random chips, or specific specialised industry standard measurement tools appropriate to the minerals under investigation, such as down hole gamma sondes, or handheld XRF instruments, etc). These examples should not be taken as limiting the broad meaning of sampling.</li> <li>Include reference to measures taken to ensure sample representivity and the appropriate calibration of any measurement tools or systems used.</li> <li>Aspects of the determination of mineralisation that are Material to the Public Report.</li> </ul> <p><i>In cases where 'industry standard' work has been done this would be relatively simple (eg 'reverse circulation drilling was used to obtain 1 m samples from which 3 kg was pulverised to produce a 30 g charge for fire assay'). In other cases more explanation may be required, such as where there is coarse gold that has inherent sampling problems. Unusual commodities or mineralisation types (eg submarine nodules) may warrant disclosure of detailed information.</i></p>	<p>Geochemical Sampling</p> <ul style="list-style-type: none"> <li>Soil samples were collected on a 200 x 100m grid within the areas shown in the announcement</li> <li>Soil samples were taken from ~30 cm depth with sampling locations photographed and recorded via GPS</li> <li>Coarse material &gt;2mm was sieved out, with samples of c. 200g kept in Kraft paper sample bags</li> </ul>
Drilling techniques	<p><i>Drill type (eg core, reverse circulation, open-hole hammer, rotary air blast, auger, Bangka, sonic, etc) and details (eg core diameter, triple or standard tube, depth of diamond tails, face-sampling bit or other type, whether core is oriented and if so, by what method, etc).</i></p>	No drilling undertaken



<p><i>Drill sample recovery</i></p>	<ul style="list-style-type: none"> <li>• Method of recording and assessing core and chip sample recoveries and results assessed.</li> <li>• Measures taken to maximise sample recovery and ensure representative nature of the samples.</li> <li>• Whether a relationship exists between sample recovery and grade and whether sample bias may have occurred due to preferential loss/gain of fine/coarse material.</li> </ul>	<p>No drilling undertaken</p>
<p><i>Logging</i></p>	<ul style="list-style-type: none"> <li>• Whether core and chip samples have been geologically and geotechnically logged to a level of detail to support appropriate Mineral Resource estimation, mining studies and metallurgical studies.</li> <li>• Whether logging is qualitative or quantitative in nature. Core (or costean, channel, etc) photography.</li> <li>• The total length and percentage of the relevant intersections logged.</li> </ul>	<p>No drilling undertaken</p>
<p><i>Sub-sampling techniques and sample preparation</i></p>	<ul style="list-style-type: none"> <li>• If core, whether cut or sawn and whether quarter, half or all core taken.</li> <li>• If non-core, whether riffled, tube sampled, rotary split, etc and whether sampled wet or dry.</li> <li>• For all sample types, the nature, quality and appropriateness of the sample preparation technique.</li> <li>• Quality control procedures adopted for all sub-sampling stages to maximise representivity of samples.</li> <li>• Measures taken to ensure that the sampling is representative of the in situ material collected, including for instance results for field duplicate/second-half sampling.</li> <li>• Whether sample sizes are appropriate to the grain size of the material being sampled.</li> </ul>	<ul style="list-style-type: none"> <li>• Samples were screened in the field to &lt;2mm</li> <li>• LabWest separates the &lt;2µm fraction from the bulk sample for analysis using their proprietary Ultrafine™ (UFF) method</li> </ul>
<p><i>Quality of assay data and laboratory tests</i></p>	<ul style="list-style-type: none"> <li>• The nature, quality and appropriateness of the assaying and laboratory procedures used and whether the technique is considered partial or total.</li> <li>• For geophysical tools, spectrometers, handheld XRF instruments, etc, the parameters used in determining the analysis including instrument make and model, reading times, calibrations factors applied and their derivation, etc.</li> </ul>	<ul style="list-style-type: none"> <li>• Samples were digested via a microwave assisted Aqua Regia Digest and analysed via ICP-MS &amp; ICP-OES for Au and 45 further elements</li> <li>• This method is considered partial for gold and near total for multi-element</li> </ul>



	<ul style="list-style-type: none"> <li>Nature of quality control procedures adopted (eg standards, blanks, duplicates, external laboratory checks) and whether acceptable levels of accuracy (ie lack of bias) and precision have been established.</li> </ul>	
Verification of sampling and assaying	<ul style="list-style-type: none"> <li>The verification of significant intersections by either independent or alternative company personnel.</li> <li>The use of twinned holes.</li> <li>Documentation of primary data, data entry procedures, data verification, data storage (physical and electronic) protocols.</li> <li>Discuss any adjustment to assay data.</li> </ul>	<ul style="list-style-type: none"> <li>Geochemical sample coordinates and geological information is recorded in the field using a handheld GPS</li> <li>Field data is entered into excel spreadsheets and then loaded into a geological database</li> </ul>
Location of data points	<ul style="list-style-type: none"> <li>Accuracy and quality of surveys used to locate drill holes (collar and down-hole surveys), trenches, mine workings and other locations used in Mineral Resource estimation.</li> <li>Specification of the grid system used.</li> <li>Quality and adequacy of topographic control.</li> </ul>	<ul style="list-style-type: none"> <li>GPS accuracy +/- 3m</li> <li>Grid Datum GDA94 MGA zone 55</li> </ul>
Data spacing and distribution	<ul style="list-style-type: none"> <li>Data spacing for reporting of Exploration Results.</li> <li>Whether the data spacing and distribution is sufficient to establish the degree of geological and grade continuity appropriate for the Mineral Resource and Ore Reserve estimation procedure(s) and classifications applied.</li> <li>Whether sample compositing has been applied.</li> </ul>	The soil sample spacing and distribution is not sufficient to establish the degree of geological and grade continuity appropriate for a Mineral Resource.
Orientation of data in relation to geological structure	<ul style="list-style-type: none"> <li>Whether the orientation of sampling achieves unbiased sampling of possible structures and the extent to which this is known, considering the deposit type.</li> <li>If the relationship between the drilling orientation and the orientation of key mineralised structures is considered to have introduced a sampling bias, this should be assessed and reported if material.</li> </ul>	At this early stage of exploration, mineralisation thickness's, orientation and dips are not known
Sample security	The measures taken to ensure sample security.	<ul style="list-style-type: none"> <li>Soil samples were collected, bagged, and sealed by Regener8 staff in the field</li> </ul>



		<ul style="list-style-type: none"> <li>• Samples were delivered to LabWest (Perth) by Courier.</li> </ul>
Audits or reviews	The results of any audits or reviews of sampling techniques and data.	Nil.

## Section 2 Reporting of Exploration Results

(Criteria listed in the preceding section also apply to this section)

Criteria	JORC Code Explanation	Commentary
Mineral tenement and land tenure status	<ul style="list-style-type: none"> <li>• Type, reference name/number, location and ownership including agreements or material issues with third parties such as joint ventures, partnerships, overriding royalties, native title interests, historical sites, wilderness or national park and environmental settings.</li> <li>• The security of the tenure held at the time of reporting along with any known impediments to obtaining a licence to operate in the area.</li> </ul>	Regener8 has entered into an agreement to acquire tenement ELA6755 as per ASX announcement of 30 July 2024.
Exploration done by other parties	Acknowledgment and appraisal of exploration by other parties.	<p>No material exploration historically undertaken on ELA6755.</p> <p>Relevant historic exploration relating to the nearby Achilles Prospect referenced in text (located south of ELA6755) includes work undertaken by Thomson Resources, Santa Fe Mining and most recently Australian Gold and Copper Ltd.</p>
Geology	<ul style="list-style-type: none"> <li>• Deposit type, geological setting and style of mineralisation.</li> </ul>	<p>The North Achilles Project is located within the Rast Trough of the southern Cobar Basin. The Rast Trough is dominated by felsic volcanism with minor sediments and is bounded to the west by the Uabba Fault.</p> <p>The tenement is prospective for Cobar-style polymetallic sulphide mineralisation similar to the neighbouring Achilles prospect. Achilles is hosted within the Achilles</p>

### Regener8 Resources HQ

Unit 1, 4 Burgay Court  
Osborne Park WA 6017

P +61 475 296 121  
E hello@regener8resources.com.au



		shear, a loosely N-S striking and east-dipping package of sheared and foliated volcanics and sediments that continues north on the North Achilles Project tenure.
Drill hole Information	<ul style="list-style-type: none"> <li>A summary of all information material to the understanding of the exploration results including a tabulation of the following information for all Material drill holes:             <ul style="list-style-type: none"> <li>easting and northing of the drill hole collar</li> <li>elevation or RL (Reduced Level – elevation above sea level in metres) of the drill hole collar</li> <li>dip and azimuth of the hole</li> <li>down hole length and interception depth</li> <li>hole length.</li> </ul> </li> <li>If the exclusion of this information is justified on the basis that the information is not Material and this exclusion does not detract from the understanding of the report, the Competent Person should clearly explain why this is the case.</li> </ul>	Not applicable;
Data aggregation methods	<ul style="list-style-type: none"> <li>In reporting Exploration Results, weighting averaging techniques, maximum and/or minimum grade truncations (eg cutting of high grades) and cut-off grades are usually Material and should be stated.</li> <li>Where aggregate intercepts incorporate short lengths of high grade results and longer lengths of low grade results, the procedure used for such aggregation should be stated and some typical examples of such aggregations should be shown in detail.</li> <li>The assumptions used for any reporting of metal equivalent values should be clearly stated.</li> </ul>	Not applicable;
Diagrams	<ul style="list-style-type: none"> <li>Appropriate maps and sections (with scales) and tabulations of intercepts should be included for any significant discovery being reported These should include, but not be limited to a plan view of drill hole collar locations and appropriate sectional views.</li> </ul>	Refer to figures within announcement.



<p><i>Balanced reporting</i></p>	<ul style="list-style-type: none"> <li>Where comprehensive reporting of all Exploration Results is not practicable, representative reporting of both low and high grades and/or widths should be practiced to avoid misleading reporting of Exploration Results.</li> </ul>	<p>Figures within the announcement show the location and results of all soil samples collected within the reported area.</p> <p>Statistics for UFF soil samples within the North Achilles Project to date are:</p> <table border="1" data-bbox="1196 437 1803 730"> <thead> <tr> <th></th> <th>Ag (ppm)</th> <th>Au (ppb)</th> <th>Cu (ppm)</th> <th>Pb (ppm)</th> </tr> </thead> <tbody> <tr> <td>Min</td> <td>0.023</td> <td>0.5</td> <td>12.4</td> <td>18.84</td> </tr> <tr> <td>Max</td> <td>0.164</td> <td>6.3</td> <td>29.8</td> <td>35.96</td> </tr> <tr> <td>Median</td> <td>0.066</td> <td>2.8</td> <td>22.4</td> <td>26.95</td> </tr> <tr> <td>Mean</td> <td>0.068</td> <td>2.86</td> <td>22.09</td> <td>27.06</td> </tr> <tr> <td>Std Dev</td> <td>0.02</td> <td>1.12</td> <td>3.036</td> <td>3.156</td> </tr> <tr> <td>90th</td> <td>0.087</td> <td>4.3</td> <td>25.7</td> <td>31.02</td> </tr> <tr> <td>95th</td> <td>0.097</td> <td>4.68</td> <td>26.97</td> <td>32.28</td> </tr> <tr> <td>98th</td> <td>0.125</td> <td>4.99</td> <td>28.18</td> <td>33.96</td> </tr> </tbody> </table>		Ag (ppm)	Au (ppb)	Cu (ppm)	Pb (ppm)	Min	0.023	0.5	12.4	18.84	Max	0.164	6.3	29.8	35.96	Median	0.066	2.8	22.4	26.95	Mean	0.068	2.86	22.09	27.06	Std Dev	0.02	1.12	3.036	3.156	90th	0.087	4.3	25.7	31.02	95th	0.097	4.68	26.97	32.28	98th	0.125	4.99	28.18	33.96
	Ag (ppm)	Au (ppb)	Cu (ppm)	Pb (ppm)																																											
Min	0.023	0.5	12.4	18.84																																											
Max	0.164	6.3	29.8	35.96																																											
Median	0.066	2.8	22.4	26.95																																											
Mean	0.068	2.86	22.09	27.06																																											
Std Dev	0.02	1.12	3.036	3.156																																											
90th	0.087	4.3	25.7	31.02																																											
95th	0.097	4.68	26.97	32.28																																											
98th	0.125	4.99	28.18	33.96																																											
<p><i>Other substantive exploration data</i></p>	<ul style="list-style-type: none"> <li>Other exploration data, if meaningful and material, should be reported including (but not limited to): geological observations; geophysical survey results; geochemical survey results; bulk samples – size and method of treatment; metallurgical test results; bulk density, groundwater, geotechnical and rock characteristics; potential deleterious or contaminating substances.</li> </ul>	<p>Relevant data reported in the text.</p>																																													
<p><i>Further work</i></p>	<ul style="list-style-type: none"> <li>The nature and scale of planned further work (e.g. tests for lateral extensions or depth extensions or large-scale step-out drilling).</li> <li>Diagrams clearly highlighting the areas of possible extensions, including the main geological interpretations and future drilling areas, provided this information is not commercially sensitive.</li> </ul>	<p>May include some or all of the following as determined by Regener8: Further geophysical work, future soil sampling, or drill testing of targets when generated.</p>																																													

