

ASX ANNOUNCEMENT

8 December 2025

LAND USE AGREEMENT SIGNED WITH MARLINYU GHOORLIE CLAIM GROUP

HIGHLIGHTS

- Horizon has executed a Land Use Agreement with the Marlinyu Ghoorlie Native Title Claimant Group
- The Agreement sets out protocols for heritage surveys, safeguards for site protection, and streamlined grant of tenure and clearance procedures for activities under Horizon's tenure.
- Horizon and Marlinyu Ghoorlie wish to develop and conduct their relationship in the spirit of goodwill, mutual respect and mutual recognition of their respective interests.

Horizon Minerals Limited (ASX: HRZ) ("Horizon" or "the Company") is proud to announce that it has executed a Land Use Agreement with the Marlinyu Ghoorlie Native Title Claimant Group ("Marlinyu Ghoorlie").

The Marlinyu Ghoorlie Native Title Claim area covers the majority of the Horizon's tenure in the eastern goldfields region of WA, overlapping approximately 240 tenements and 90% of the Company's land package by area. This agreement provides a solid framework of cooperatively working together to identify and protect Aboriginal Cultural Heritage at Horizon's projects whilst allowing the Company to advance its pipeline of projects to feed the Black Swan processing facility.

Managing Director and CEO Mr Grant Haywood commented:

"We are very pleased to have signed this Land Use Agreement with the Marlinyu Ghoorlie. This landmark Agreement reflects Horizon's commitment to working in partnership with the Marlinyu Ghoorlie people in a spirit of goodwill and mutual respect. It provides a strong framework to protect Aboriginal Cultural Heritage while supporting the responsible advancement of our projects across the eastern goldfields of Western Australia."

Authorised for release by the Board of Directors.

For further information, please contact:

Grant Haywood
Managing Director and CEO
grant.haywood@horizonminerals.com.au
+61 8 9386 9534

Michael Vaughan
Investor and Media Relations – Fivemark
michael.vaughan@fivemark.com.au
+61 422 602 720



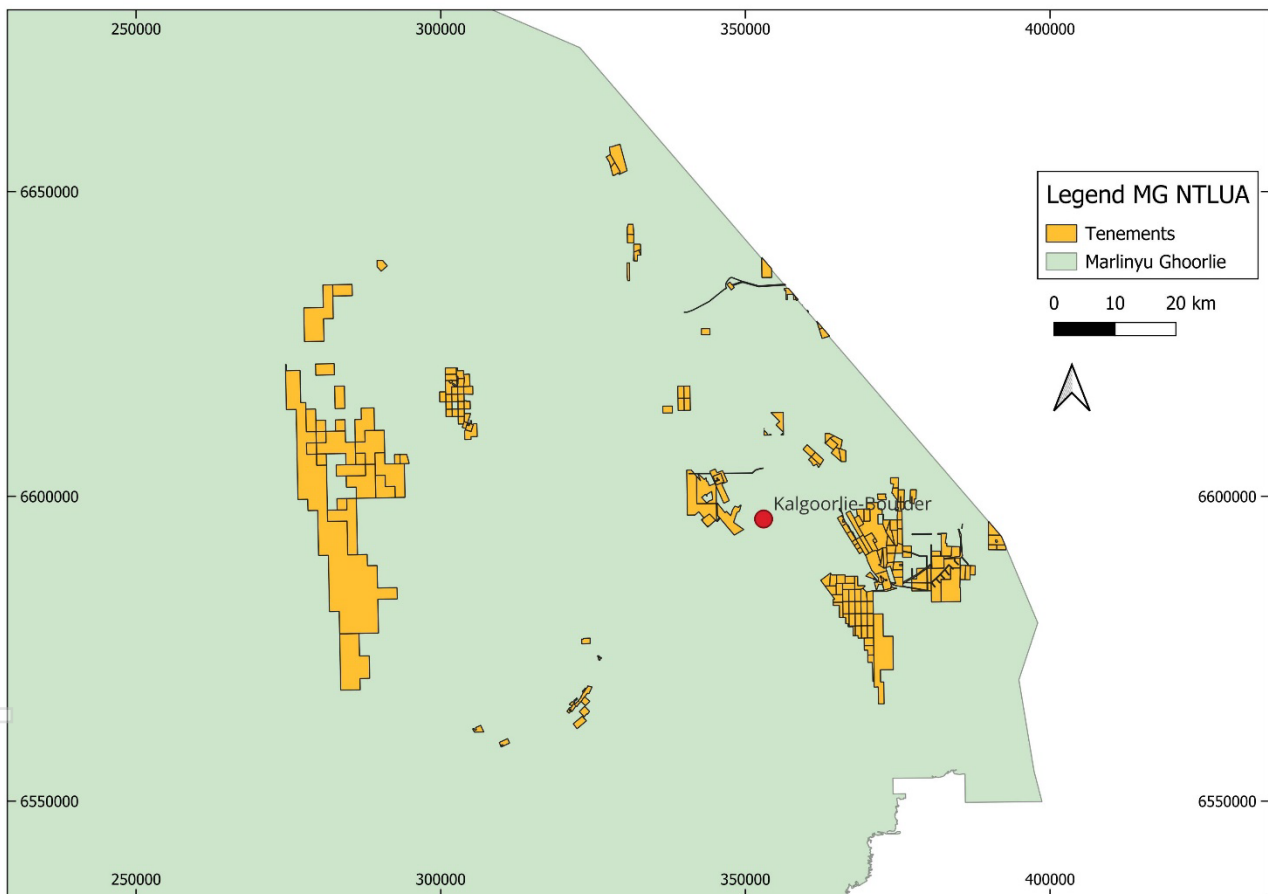
JOIN HORIZON MINERALS INTERACTIVE HUB

Visit <https://investors.horizonminerals.com.au/auth/signup> for Horizon Minerals' Interactive InvestorHub

Horizon Minerals

Email: info@horizonminerals.com.au

Appendix 1 – Map of the Agreement Area as at the Agreement Date



Appendix 2 – Heritage Agreement Tenement Schedule

Prospect/Tenement	Notes	Percentage interest held	Mineral Rights Held	Third Party Mineral Rights Held
WESTERN AUSTRALIA				
BINDULI				
L26/261		100%	-	-
M26/346		100%	-	-
M26/499		100%	-	-
M26/549		100%	-	-
M26/621		100%	-	-
P26/4579		100%	-	-
P26/4580		100%	-	-
MLA26/855		100%	-	-
PLA26/4318		100%	-	-
BLACK FLAG				
E26/220		100%	-	-
P24/5348		100%	-	-
P24/5415		100%	-	-
P24/5637		100%	-	-
P24/5638		100%	-	-
P24/5639		100%	-	-
P24/5640		100%	-	-
BLACK SWAN				
L24/219		100%	-	-
L24/222		100%	-	-
L27/75		100%	-	-
CANNON GOLD MINE				
E25/349		100%	All (except)	Nickel
E25/543		100%	All (except)	Nickel
E25/564		100%	All (except)	Nickel
L25/48		100%	-	-
L25/50		100%	-	-
L25/51		100%	-	-
M25/182		100%	-	-
M25/327		100%	-	-
M25/329		100%	-	-
M25/330		100%	-	-
M25/333		100%	-	-

For personal use only

M25/357		100%	-	-
P25/2449		100%	-	-
P25/2633		100%	-	-
P25/2670		100%	-	-
P25/2733		100%	-	-
P25/2748		100%	-	-
P25/2755		100%	-	-
P25/2761		100%	-	-
CHADWIN				
P16/3121		100%	-	-
COOLGARDIE				
E16/589		100%	-	-
E16/590		100%	-	-
E16/591		100%	-	-
E16/592		100%	-	-
LA15/429		100%	-	-
LA15/430		100%	-	-
GOLDEN RIDGE (NIMBUS)				
M26/41		100%	-	-
M26/433		100%	-	-
M26/534		100%	-	-
KANOWNA BELLE (NIMBUS)				
P27/2380		100%	-	-
P27/2381		100%	-	-
ROSE HILL				
M15/1204		100%	-	-
M15/652		100%	-	-
P15/6380		100%	-	-
LAKWOOD				
E26/209		100%	-	-
P26/4316		100%	-	-
P26/4317		100%	-	-
P26/4319		100%	-	-
P26/4320		100%	-	-
P26/4321		100%	-	-
P26/4322		100%	-	-
P26/4323		100%	-	-
P26/4324		100%	-	-

For personal use only

P26/4325		100%	-	-
P26/4326		100%	-	-
P26/4327		100%	-	-
P26/4328		100%	-	-
P26/4329		100%	-	-
P26/4330		100%	-	-
P26/4331		100%	-	-
P26/4332		100%	-	-
P26/4333		100%	-	-
P26/4334		100%	-	-
P26/4335		100%	-	-
P26/4336		100%	-	-
P26/4337		100%	-	-
P26/4338		100%	-	-
P26/4339		100%	-	-
P26/4340		100%	-	-
P26/4341		100%	-	-
P26/4342		100%	-	-
P26/4343		100%	-	-
P26/4344		100%	-	-
P26/4345		100%	-	-
P26/4350		100%	-	-
WHITE FLAG				
E26/168		100%	-	-
M26/616		100%	-	-
MLA26/855				
WINDANYA				
M24/919		100%	-	-
M24/959		100%	-	-
P24/4817		100%	-	-
P24/5046		100%	-	-
P24/5464		100%	-	-
P24/5507		100%	-	-
P24/5508		100%	-	-
MLA24/1004		100%	-	-
YARMANY				
E15/1655		100%	-	-
E15/1723		100%	-	-

For personal use only

M16/470		100%	-	-
M16/471		100%	-	-
M16/493		100%	-	-
E16/494		100%	-	-
E16/497		100%	-	-
E16/503		100%	-	-
E16/506		100%	-	-
E16/507		100%	-	-
E16/510		100%	-	-
E16/519		100%	-	-
E16/521		100%	-	-
E16/525		100%	-	-
E16/526		100%	-	-
P16/3212		100%	-	-
P16/3213		100%	-	-
NIMBUS/BOORARA				
E25/511		100%	All (except)	Nickel
L25/32		100%	-	-
L25/35		100%	-	-
L25/36		100%	-	-
L26/240		100%	-	-
L26/252		100%	-	-
L26/266		100%	-	-
L26/270		100%	-	-
L26/274		100%	-	-
L26/275		100%	-	-
M25/355		100%	-	-
M26/29		100%	-	-
M26/161		100%	-	-
M26/277		100%	-	-
M26/318		100%	-	-
M26/490		100%	-	-
M26/598		100%	-	-
P25/2450		100%	-	-
P25/2469		100%	-	-
P25/2470		100%	-	-
P25/2471		100%	-	-
P25/2472		100%	-	-

For personal use only

P25/2473		100%	-	-
P25/2474		100%	-	-
P25/2475		100%	-	-
P25/2526		100%	All (except)	Nickel
P25/2551		100%	-	-
P25/2552		100%	-	-
P25/2643		100%	-	-
P25/2644		100%	-	-
P25/2645		100%	-	-
P25/2646		100%	-	-
P25/2647		100%	-	-
P25/2697		100%	-	-
P25/2732		100%	-	-
P26/4199		100%	-	-
P26/4204		100%	-	-
P26/4205		100%	-	-
P26/4206		100%	-	-
P26/4207		100%	-	-
P26/4208		100%	-	-
P26/4299		100%	-	-
P26/4300		100%	-	-
P26/4301		100%	-	-
P26/4302		100%	-	-
P26/4381		100%	All (except)	Nickel
P26/4382		100%	All (except)	Nickel
P26/4383		100%	All (except)	Nickel
P26/4384		100%	All (except)	Nickel
P26/4385		100%	All (except)	Nickel
P26/4386		100%	All (except)	Nickel
P26/4405		100%	All (except)	Nickel
P26/4431		100%	-	-
P26/4432		100%	-	-
P26/4505		100%	-	-
P26/4509		100%	-	-
P26/4510		100%	-	-
P26/4518		100%	-	-
P26/4582		100%	-	-
P27/2429		100%	-	-

For personal use only

P27/2466		100%	-	-
P27/2467		100%	-	-
BURBANKS				
M15/161		100%	-	-
M15/731		100%	-	-
MLA16/1845		100%	-	-
MLA16/1860		100%	-	-
P15/5249		100%	-	-
P15/5412		100%	-	-
P15/6314		100%	-	-
P15/6381		100%	-	-
P15/6382		100%	-	-
P15/6757		100%	-	-
P15/6774		100%	-	-
P15/6775		100%	-	-
PHOENIX				
M15/119		100%	-	-
PHILLIPS FIND				
M16/130		100%	-	-
M16/133		100%	-	-
M16/168		100%	-	-
M16/171		100%	-	-
M16/242		100%	-	-
M16/258		100%	-	-
M16/550		100%	-	-
MLA16/556		100%	-	-
MLA16/597		100%	-	-
MAL16/600		100%	-	-
MLA16/602		100%	-	-
MLA16/603		100%	-	-
MLA16/604		100%	-	-
MLA16/605		100%	-	-
MLA16/606		100%	-	-
MLA16/607		100%	-	-
MLA16/608		100%	-	-
MLA16/609		100%	-	-
MLA16/610		100%	-	-
P16/2985		100%	-	-

P16/2986		100%	-	-
P16/2987		100%	-	-
P16/2988		100%	-	-
P16/2998		100%	-	-
P16/2999		100%	-	-
P16/3037		100%	-	-
P16/3038		100%	-	-
P16/3039		100%	-	-
P16/3040		100%	-	-
P16/3041		100%	-	-
P16/3042		100%	-	-
P16/3043		100%	-	-
P16/3084		85%	-	-
P16/3085		85%	-	-
P16/3086		85%	-	-
P16/3087		85%	-	-
P16/3088		100%	-	-
P16/3358		100%	-	-
LAKE JOHNSTON				
L63/61		100%	-	-
M63/282		100%	-	-
M63/283		100%	-	-
M63/292		100%	-	-
M63/293		100%	-	-
M63/522		100%	-	-
M63/523		100%	-	-
GORDONS¹				
E27/570		100%	-	-
E27/602		100%	-	-
MLA27/522		100%	-	-
P27/2344		100%	-	-
P27/2345		100%	-	-
P27/2346		100%	-	-
YARMANY – GOLD TIGER RESOURCES (AUS) LIMITED				
E16/492		25%	-	-
E16/499		25%	-	-

¹ Tenements acquired from Yandal Resources as announced to the ASX on 5th August 2025