

ASX ANNOUNCEMENT

3D Energi Limited | ASX: TDO

17 December 2025

Otway Exploration Drilling Program

Charlemont-1 Exploration Well – Operational Update

3D Energi Limited (the “Company”; ASX:TDO) is pleased to provide the following update on drilling operations at the Charlemont-1 gas exploration well within VIC/P79 exploration permit, offshore Otway Basin, Victoria.

Operations Status

The Charlemont-1 well was spud at **7:15pm AEST** on **10 December 2025** by the Transocean Equinox. The well is expected to take approximately **32.9 days** to drill to Total Depth (TD) of approximately **2830 metres** TVDSS, subject to operational conditions.

The status of Charlemont-1 operations as at **10am AEST** on **17 December 2025** is summarised below:

Days Since Spud	7
Current Depth	1371m MDRT ¹ / 1338.6m TVDSS ²
Hole Size	17½-inch hole (Surface section)
Current Formation (preliminary)	Intra Gellibrand Formation
Activity	Preparing to drill Intermediate section
Next Planned Activity	Drill 12¼-inch hole (Intermediate section) to section depth and install 9⅝-inch casing

At the time of this announcement, operations are running safely and smoothly.

Equity interest

3D Energi Limited	20%
ConocoPhillips Australia (Operator)	51%
Korea National Oil Company	29%

This announcement is authorised for release by the Board of Directors of 3D Energi Limited.

For further information, please contact:

Noel Newell

Executive Chairman

Email: info@3denergi.com.au

Phone: +61 3 9650 9866

¹ MDRT = Measured Depth below Rotary Table

² TVDSS = True Vertical Depth Sub-Sea

Disclaimers

3D Energi Limited is an oil and gas exploration company based in Melbourne, Victoria, with high-impact projects in offshore Victoria and Western Australia. Unless otherwise indicated “the Company”, “we”, “our”, “us” and “3D Energi” are used in this announcement to refer to the business of 3D Energi Limited.

This announcement contains certain “forward-looking statements”, which can generally be identified by the use of words such as “will”, “may”, “could”, “likely”, “ongoing”, “anticipate”, “estimate”, “expect”, “project”, “intend”, “plan”, “believe”, “target”, “forecast”, “goal”, “objective”, “aim”, “seek” and other words and terms of similar meaning. These statements reflect the views, expectations, and assumptions of 3D Energi Limited. 3D Energi Limited cannot guarantee that any forward-looking statement will be realised. Achievement of anticipated results is subject to risks, uncertainties and inaccurate assumptions. Should known or unknown risks or uncertainties materialise, or should underlying assumptions prove inaccurate, actual results could vary materially from past results and those anticipated, estimated or projected. You should bear this in mind as you consider forward-looking statements, and you are cautioned not to put undue reliance on any forward-looking statement.

For personal use only

Appendix: Supplementary Figures

The following figures provide additional geological and location context for the Charlemont-1 exploration well. These figures are supplementary to the information contained in the body of this announcement.

Figure (1) VIC/P79 and T/49P exploration permits with the Charlemont-1 well location.

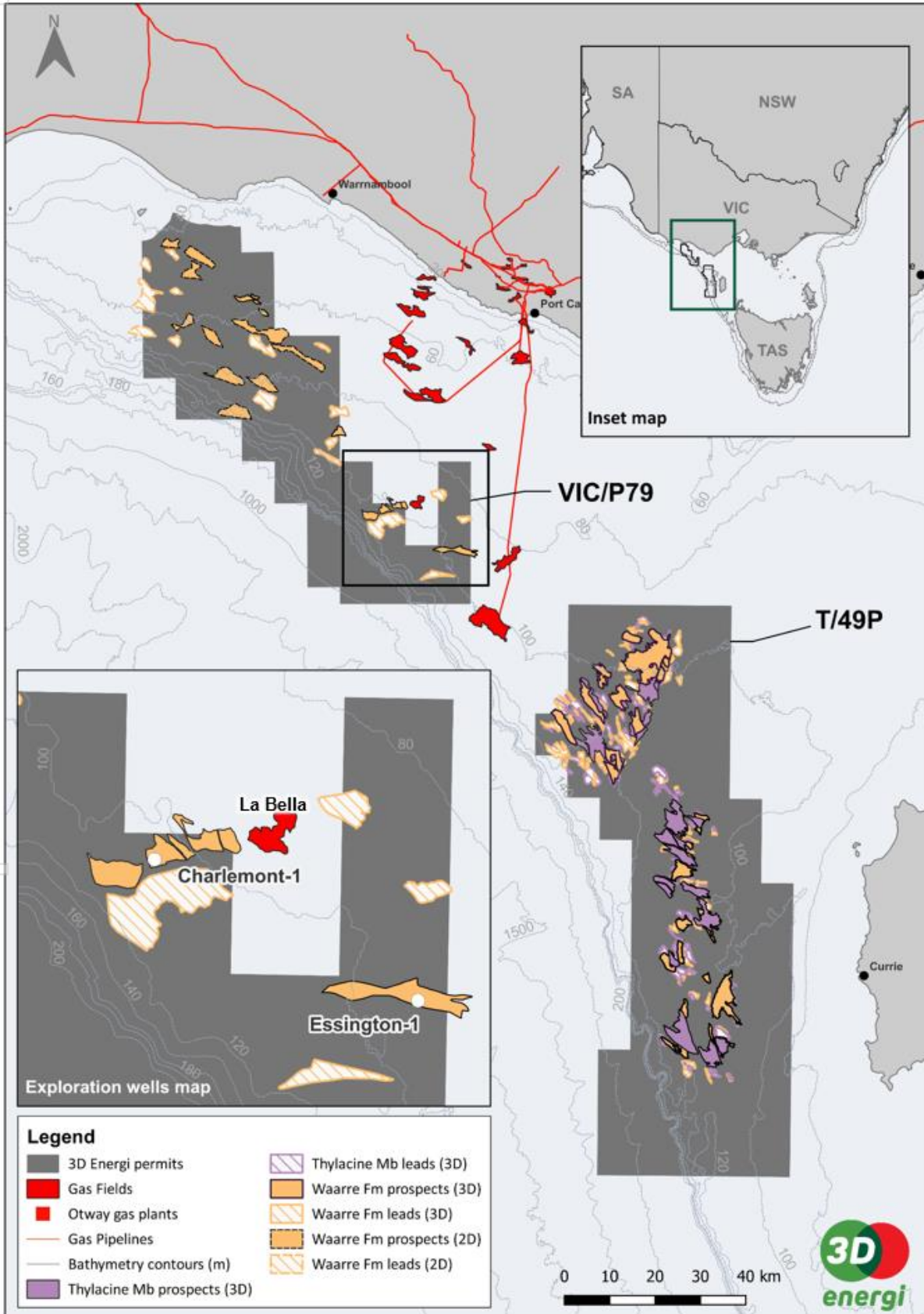


Figure (2) Charlemont B prospect lies at one end of a prospect chain, with the La Bella gas discovery at the other, approximately 7km to the east.

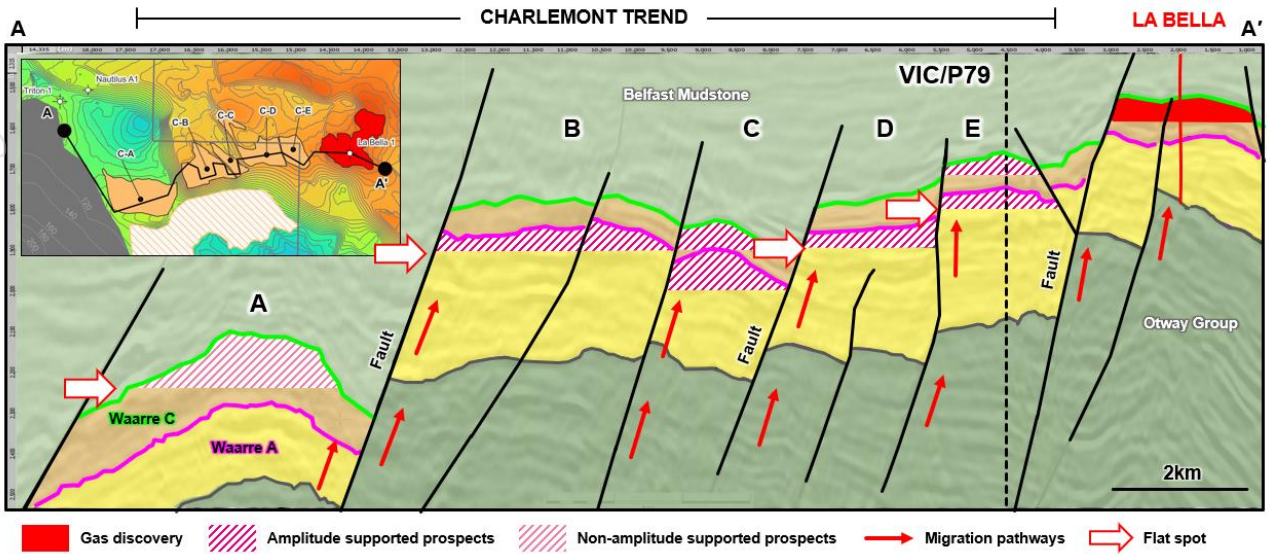


Figure (3a) Waarre A depth map of the Charlemont B prospect within the VIC/P79 exploration permit. (3b) Charlemont B amplitude map highlights an amplitude anomaly conforming with depth contours.

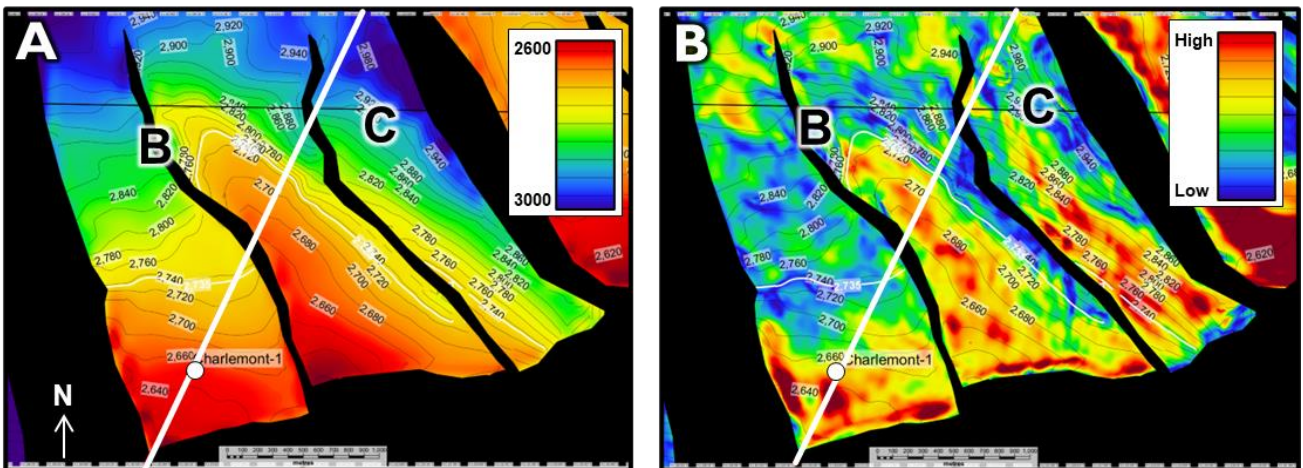


Figure (4a) Schematic cross-section showing the interpreted gas column in the Waarre A reservoir. (4b) Seismic section highlighting a well-developed flat spot in the Waarre A (red arrow), interpreted as a gas-water contact.

