



ASX: ANNOUNCEMENT

# INITIAL MOUNT MACKENZIE RESULTS CONFIRM HIGH-GRADE GOLD & SILVER

## Highlights

- Maiden multi-rig drilling program at Mount Mackenzie confirms **high-grade gold and silver mineralisation** consistent with the high-sulphidation epithermal model.
- Nineteen (19) RC and diamond holes have now been completed for 2,240m drilled.
- Significant gold and silver intercepts from the first five (5) holes include:
  - MMRC004: **6m @ 8.11 g/t & >100\* g/t Ag** from 49m
    - within **11m @ 4.63 g/t Au & 59.8\* g/t Ag** from 47m
  - MMRC001: **44m @ 1.00 g/t Au & 20.8\* g/t Ag** from 9m
    - including **4m @ 2.17 g/t Au & 33.3\* g/t Ag** from 46m
  - MMRC005: **13m @ 2.21 g/t Au & 17.22 g/t Ag** from 27m
    - including **6m @ 3.47 g/t & 21.70 g/t Ag** from 33m
  - MMRC002: **3m @ 1.09 g/t & 16.6 g/t Ag** from 121m
  - MMRC003: **5m @ 1.3 g/t** from 54m
- Samples from thirteen (13) additional holes currently at the laboratory for expedited analysis.
- An additional diamond rig has been contracted, lifting the program to three active rigs with drilling continuing unabated through the Christmas/New Year period.

## Overview

QMiner Limited (**ASX:QML**) is pleased to report maiden reverse circulation (RC) drilling results from the Mount Mackenzie gold silver project, located approximately 120km northwest of Rockhampton in Central Queensland.

This drilling program represents the first drilling undertaken by QMiner at Mount Mackenzie and forms part of the Company's broader multi-project strategy to consolidate regional feed sources for the planned Mt Chalmers central processing hub.

The program was designed to confirm historical mineralisation, improve geological confidence in the existing geological model underpinning the Mineral Resource Estimate, and support future mine design and optimisation studies.

\* Silver values marked with an asterisk include assays that exceed the analytical upper detection limit and will be re-assayed. Reported interval averages may include capped over-limit values

## Management Comment

Executive Chairman Andrew Sparke said:

“These maiden drill results from Mount Mackenzie strongly validate the quality of the existing resource and highlight the significant growth potential of the system. High-grade intercepts including **6m @ 8.11g/t and +100g/t silver** within **11m @ 4.63g/t gold and 59.8g/t silver** together with broad zones of mineralisation including **44m @ 1.00g/t gold and 20.8 g/t silver**, confirm a robust epithermal gold and silver system that remains open at depth and along strike.

The QMines exploration team has now completed 19 holes for 2,240m, 13 of which are in the laboratory awaiting assay. With a large number of assays still pending and drilling continuing, we see clear potential for further resource growth.

Strategically, Mount Mackenzie is an excellent fit within our central Queensland hub strategy, providing high-quality feed optionality for the planned Mt Chalmers processing hub.

As we progress toward updated resource estimates, pit optimisation and mine design, we believe Mount Mackenzie can materially enhance project scale, mine life and overall project economics, supporting strong long-term value creation for shareholders.”



Figure 1: Location and Infrastructure surrounding the Mt Chalmers, Develin Creek and Mt Mackenzie projects.

## Mount Mackenzie Project

The Mount Mackenzie Project is a high-sulphidation epithermal gold silver deposit located approximately 120km northwest of Rockhampton in Central Queensland. The project is 100% owned by QMines Limited and is situated within the Connors Magmatic Arc of the New England Fold Belt, a well-recognised mineralised province in eastern Australia.



Mineralisation at Mount Mackenzie is hosted within altered volcanic rocks and is characterised by advanced argillic alteration, pervasive silicification, and elevated gold and silver values. The deposit is interpreted to represent the upper levels of a high-sulphidation epithermal system, with gold mineralisation occurring within broad, shallow zones amenable to open pit mining.

Mount Mackenzie currently hosts a JORC 2012 code compliant Mineral Resource Estimate of 3.35Mt at 1.40 g/t Au and 8.4 g/t Ag for approximately 151,000oz of gold and 902,000oz Ag<sup>1</sup>, comprising Indicated and Inferred resources. The resource remains open at depth and along strike, with previous drilling demonstrating continuity of mineralisation within multiple mineralised domains. The Mineral Resource Estimate is reported using cut-off grades of 0.5g/t Au for oxide material and 0.7g/t Au for fresh material, consistent with the assumptions outlined in the original 19 May 2020 ASX announcement.

## QMiners' Drilling Program

The Mount Mackenzie drilling program has now commenced, marking the start of QMiners' 2025 gold focused exploration campaign. The program is currently ramping up, with drilling scheduled to continue through the Christmas period utilising a combination of RC and diamond drilling. In addition to the active RC and diamond rigs, the Company has engaged a contractor to provide a third diamond drill rig to further accelerate the program.

The initial phase of drilling has been designed to address limitations in the historical dataset and to generate fit for purpose geological and assay data appropriate for a high-sulphidation epithermal gold system. Historical drilling across the area is dominated by open hole percussion drilling, with samples typically collected as 2m composites. While suitable for early-stage geochemical screening, the Company believes that it is not appropriate for the basis of mining studies, and as such much of this early stage of drilling is designed to improve confidence.

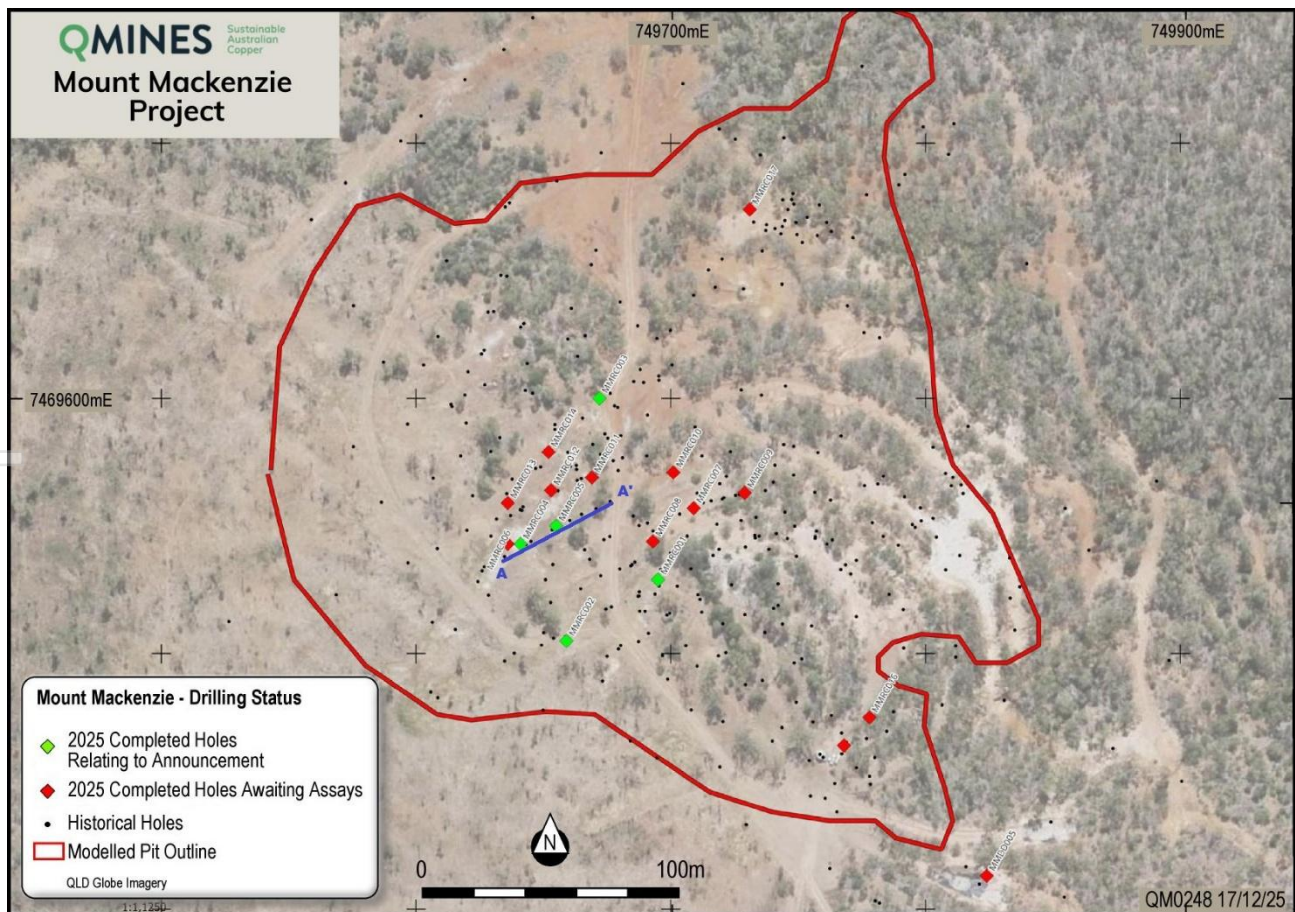


Figure 2: Location of currently completed QMiners' drilling at the North Knoll deposit.

<sup>1</sup> ASX Announcement - Resource Upgrade At Mount Mackenzie Gold & Silver Project, 9 July 2025.

Holes MMRC001, MMRC004 and MMRC005 were primarily drilled as part of a validation program to replace historic lower confidence open hole percussion drilling. MMRC002 and MMRC003 were drilled to independently validate historical assays and assess potential sampling bias in legacy drilling, while also providing improved geological and structural information.

Diamond drilling is being used to recover continuous core for detailed lithological, alteration, and structural logging and high-quality sampling, while RC drilling is being used to efficiently test extensions and provide rapid geological and geochemical coverage. Results from the ongoing drilling will be used to refine the geological model, guide follow up targeting, and support future resource definition at Mount Mackenzie.

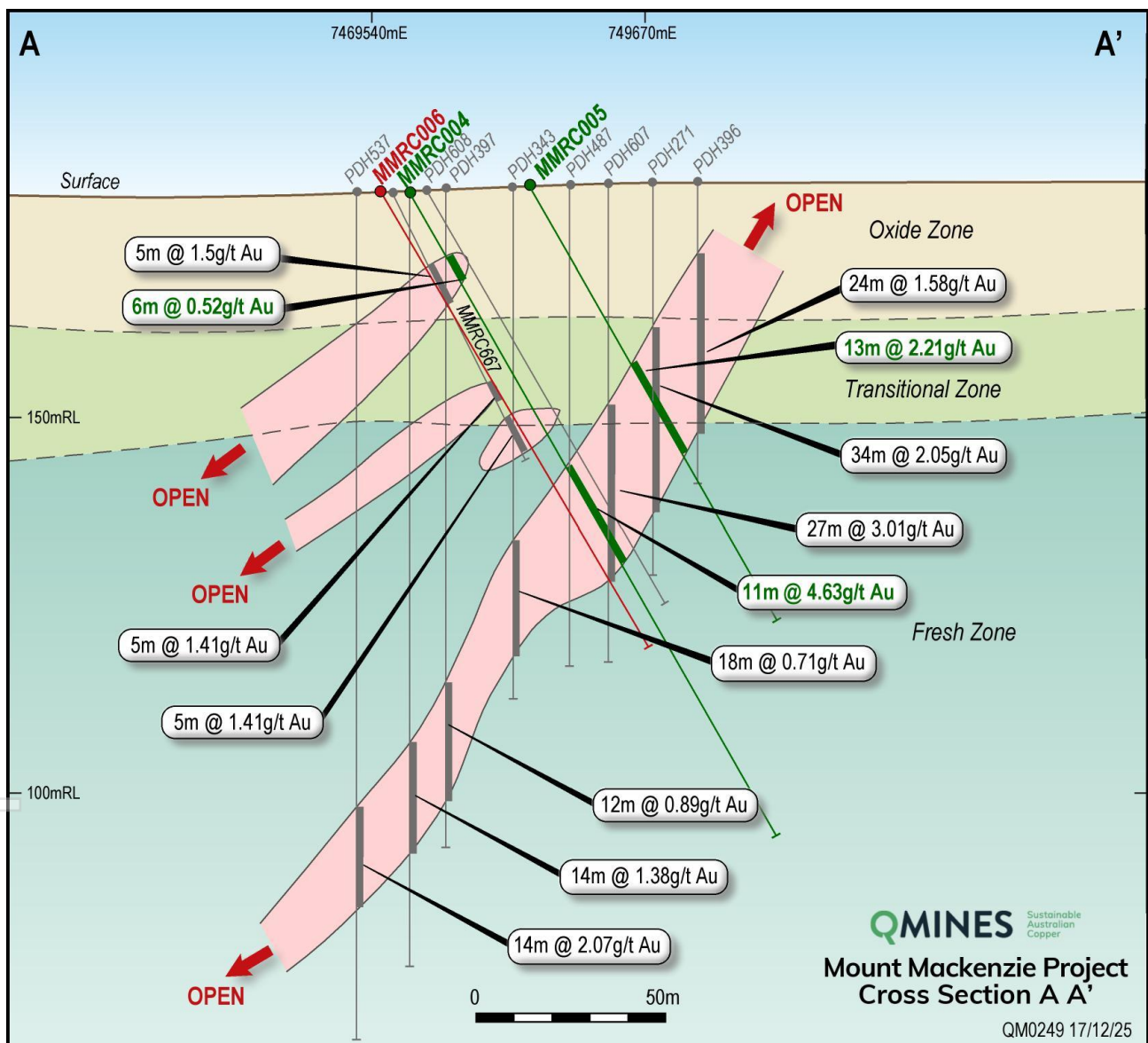


Figure 3: Cross-section through A-A' looking ENE. Section window is +/- 15m.

#### Oxide Zone

Strongly weathered, silica-altered crystal lithic tuffs and andesitic volcanics. Primary sulphides are largely destroyed and replaced by hematite and limonite after pyrite.

#### Transitional Zone

Weakly weathered crystal lithic tuffs, porphyritic volcanics and andesite with partial oxidation of sulphides. Silicification is preserved, with remnant pyrite variably altered along fractures and grain boundaries.

#### Fresh Zone

Fresh crystal lithic tuffs, porphyritic volcanic rocks, andesite and minor dacite. Alteration is dominated by silicification with preserved pyrite occurring as disseminations, aggregates, and minor veinlets, with local chlorite and clay alteration.

Table 1: Drill hole location and significant intercepts (Drill co-ordinates in MGA94 Zone 55. Intercept based on lower cut-off grade of 0.2 g/t Au, 0m internal waste), drilling results reported in this announcement in **blue**.

Hole ID	Easting	Northing	mRL	Dip	Azi	Depth	From	To	Interval (m)	Au (g/t)	Ag (g/t)	Au Gram Metres (g-m)
MMRC001	749695	7469529	191	90	0	100	9	53	44	1.00	20.78*	44
including							46	50	4	2.17	33.25*	8.7
MMRC002	749659	7469505	179	55	66	145	115	128	13	0.61	6.78	7.9
including							121	124	3	1.09	16.63	3.3
MMRC003	749672	7469600	170	90	0	180	54	75	21	0.65	8.02	13.7
including							54	59	5	1.3	13.2	6.5
MMRC004	749641	7469543	185	60	60	115	47	58	11	4.63	59.76*	50.9
including							49	55	6	8.11	>100*	48.7
MMRC005	749655	7469550	176	60	65	95	27	40	13	2.21	17.22	28.73
including							33	39	6	3.47	21.7	20.82
MMRC006	749636	7469543	174	60	65	95	Awaiting Assays					
MMRC007	749709	7469557	209	60	65	95	Awaiting Assays					
MMRC008	749693	7469544	209	60	65	100	Awaiting Assays					
MMRC009	749729	7469563	212	60	65	95	Awaiting Assays					
MMRC010	749701	7469571	190	70	90	120	Awaiting Assays					
MMRC011	749669	7469569	186	60	65	95	Awaiting Assays					
MMRC012	749653	7469564	184	60	65	95	Awaiting Assays					
MMRC013	749636	7469559	184	60	65	95	Awaiting Assays					
MMRC014	749652	7469579	131	60	65	95	Awaiting Assays					
MMRC015	749768	7469464	150	60	65	95	Awaiting Assays					
MMRC016	749778	7469475	199	90	0	95	Awaiting Assays					
MMRC017	749731	7469674	164	60	65	30	Awaiting Assays					
MMDD005	749824	7469413	243	75	145	300	Awaiting Assays					

Gram-metre values are provided for comparative purposes only and do not represent contained metal.

\* Silver values marked with an asterisk exceed the analytical upper detection limit and will be re-assayed using a higher-range analytical method.

## Data Aggregation and Calculation Methods

Reported exploration intercepts are presented as length weighted downhole composites calculated using a nominal 0.2g/t Au cut off. No top cutting of gold or silver assays has been applied. Intervals reflect continuous mineralised zones above cut off and do not include internal dilution. Reported intercepts are downhole lengths and may not represent true widths, which are not yet well constrained.

Gold and silver grades are reported as assayed values. Some silver assays exceeded the upper detection limit of 100 ppm Ag (intervals denoted with an asterisk in the drill table). This effectively acts as a 100 g/t cap for Ag.

These samples represent a small proportion of the total dataset and will be re-assayed using appropriate higher range analytical methods. Use of capped values is considered conservative and does not materially affect the interpretation of results.

Gram metre values are reported as an additional comparative metric and are calculated by multiplying the downhole interval length in metres by the corresponding grade in grams per tonne. Where presented, gram metres are calculated for gold only. Gram metre values are intended solely as an indicative measure of intercept strength and continuity and should not be interpreted as a proxy for contained metal, Mineral Resources, or Ore Reserves.

No metal equivalent values, aggregated intercepts, or gram metre calculations are used for resource estimation purposes at this stage. All calculations are presented for transparency and comparative interpretation only.

## Mount Mackenzie Geology

The Mount Mackenzie Project is located within the Connors Auburn Arc, a Late Carboniferous to Permian magmatic belt associated with the Hunter Bowen Orogeny. The region is characterised by prolonged arc-related magmatism, with mid Carboniferous to Early Permian intrusive and extrusive rocks dominating the stratigraphy.

During the Late Carboniferous, at approximately 305Ma, regional tectonics transitioned from arc-related compression to crustal extension. This shift generated extensive fault and fracture networks, dyke swarms, and intrusive bodies that focused metal-rich hydrothermal fluids into shallow crustal levels.

Local stratigraphy at Mount Mackenzie comprises volcanic units with minor sedimentary horizons intruded by granitoids. The basal Connors Volcanics are overlain by the Macksford Felsics and the Macksford Andesite dated at  $314.9 \pm 3.6\text{Ma}$ , with the sequence capped by the Coppermine Tuff dated at  $296.6 \pm 2.5\text{Ma}$ . These units are intruded by the South Creek Igneous Complex, a monzodiorite to monzonite body dated at  $304.0 \pm 2.2\text{Ma}$ , interpreted to have provided the primary magmatic heat source for hydrothermal alteration. Intrusions coincide with a magnetite destruction corridor, indicating a strong link between magmatism, structure, and mineralisation.

Mineralisation is characteristic of a high-sulphidation epithermal gold-silver system. Gold-silver is hosted in silicified breccias, vuggy quartz, and advanced argillic alteration zones comprising alunite, kaolinite, dickite, and locally pyrophyllite, with pyrite-dominant sulphide assemblages including enargite, covellite, and tennantite.

Two principal mineralised zones are recognised. The North Knoll extends approximately 350m along strike and 100m down dip and hosts the majority of the Mineral Resource, while the Southwest Slopes comprise a more steeply dipping zone characterised by sub-vertical veins and stringer mineralisation. Both zones remain open along strike and at depth, with mineralisation controlled by fault zones, lithological contacts, and areas of enhanced permeability.



## Develin Creek Update

Assay results have been received for the final drill hole completed as part of the recent Develin Creek drilling program. All other holes have been previously released to the market and the results from this hole is not considered material to the overall exploration results and do not alter the geological interpretation or Mineral Resource framework for the project. The assay data are disclosed for completeness and mark the conclusion of the current Develin Creek drilling program.

Table 2: Develin Creek Sulphide City drilling results reported in this announcement in **blue**. Previously reported results (black) are significant results. Hole prefix DCRC = RC drillhole, DCRD = Diamond tail.

Hole ID	Easting	Northing	mRL	Dip	Azi	Depth	From	To	Interval	Cu (%)	Zn (%)	Au (g/t)	Ag (g/t)	CuEq
DCRC046	789077	7450262	112	-75	126	100	74	78	4	0.2	1.7	0.3	5.1	1.03
and							99	100	1	1.2	0.3	0.3	3.8	1.55
DCRC047	789128	7450252	112	-76	138	100								
DCRC048	789180	7450633	120	-72	140	319	239	245	6	2.2	3.0	0.3	37.0	3.74
DCRC049	789177	7450594	120	-65	125	162	115	119	4	0.2	1.8	0.1	3.9	0.79
DCRC050	789206	7450585	120	-65	135	288	167	188	21	1.2	2.3	0.1	2.5	1.91
including							178	187	9	2.6	4.2	0.1	5.6	3.92
including							234	248	14	0.4	1.1	0.3	9.1	1.12
including							246	247	1	1.7	5.6	2.8	97.0	7.04
DCRC051	789185	7450470	126	-60	130	100	68	69	1	0.3	0.5	0.0	1.2	0.47
DCRC052	789036	7450314	126	-66	139	100								
DCRC053	789216	7450409	112	-66	135	150								
DCRC054	789218	7450563	112	-74	128	319	134	188	54	0.5	1.5	0.1	2.3	1.04
DCRC055	789217	7450436	112	-70	126	240	123	136	13	0.2	0.0	0.0	0.0	0.2
DCRC056	789222	7450471	114	-65	320	209	63	68	5	0.2	1.2	0.1	3.0	0.6
DCRC057												NSI		
DCRC058	789206	7450618	119	-65	140	240	196	203	7	1.4	0.8	0.1	3.0	1.7
DCRC059	789158	7450595	123	-67	130	196	92	96	4	1.4	3.0	0.3	47.0	3.1
and							162	197	35	0.7	1.5	0.1	3.0	1.2
DCRC060	789169	7450538	116	-65	135	276	59	104	44	0.6	2.3	0.1	5.3	1.4
including							59	66	7	1.8	1.2	0.3	23.5	2.7
and							149	161	12	1.1	0.3	0.3	4.4	1.5
DCRC061	789164	7450465	121	-75	130	150	104	129	25	0.5	3.0	0.1	2.2	1.4
including							125	129	4	2.6	13.3	0.3	9.1	6.8
DCRC062	789168	7450511	123	-75	128	154	133	153	20	0.8	0.7	0.2	2.6	1.1
including							139	144	5	1.5	2.3	0.2	5.2	2.4
DCRC063	789111	7450492	129	-60	140	245	165	172	7	1.6	1.2	0.3	26.0	2.5
DCRC064	789192	7450543	79	-75	130	264	164	180	16	1.2	0.1	0.2	2.7	1.4
DCRC065	789279	7450492	79	-65	152	252	166	169	5	0.8	2.6	0.6	12.7	2.3
DCRC066	789260	7450412	109	-70	138	270						NSI		
DCRC067	789165	7450331	117	-71	134	241						NSI		
DCRC068	789168	7450473	117	-76	128	189			2	0.3	0.3	0.2	13.9	0.7
DCRC069	789277	7450557	107	-76	158	246	163	166	3	2.3	1.0	0.2	18.6	3.0
DCRC070	789168	7450437	116	-75	157	270	113	116	3	0.9	0.8	0.3	24.8	1.7
and							135	137	2	1.1	0.2	0.1	2.3	1.4

DCRC071	789140	7450489	120	-75	143	174	144	151	7	1.1	1.4	0.2	4.8	1.7
DCRC072	789125	7450517	132	-60	147	144						NSI		
DCRC073	789113	7450554	122	-76	145	270						NSI		
DCRC074	789226		114	-75	138	168	108	119	9	2.2	0.3	0.1	3.0	2.4
DCRC075	789250	7450483	117	-80	310	153	135	151	16	1.7	0.5	0.4	6.0	2.3
Including							138	142	4	3.5	1.1	0.4	6.9	4.3
DCRC079	789125	7450265	120	-90	360	99	88	99	11	1.7	1.8	0.1	9.4	2.4
Including							92	99	7	2.2	2.4	0.2	13.0	3.2
DCRD062	789168	7450511	123	-75	137	175.6	138	163	25	1.1	0.4	0.2	3.0	1.5
DCRD059	789158	7450595	123	-67	130	210	197.3	200	2.7	0.6	0.6	0.0	1.5	0.7
DCRD061	789164	7450465	121	-75	150	194.1	131	132	1	1.9	0.6	0.2	12.0	2.4
DCRC083	789124	7450276	117	-70	137	180	156	162	6	0.2	0.2	0.0	1.4	0.3
DCRC084	789125	7450275	117	-90	0	140	97	106	9	0.6	0.1	0.8	5.4	1.6
DCRC085	789136	7450259	120	-90	0	135	105	113	8	0.5	1.3	0.1	4.2	1.0
DCRD086	789269	7450465	110	-90	0	256.9	127	134	7	0.43	0.89	0.16	1.36	0.86
DCRC087	789269	7450465	110	-90	0	230						NSI		
DCRC088	789251	7450509	110	-90	0	240	137	171	34	1.9	0.4	0.2	3.6	2.2
DCRC089	789216	7450528	117	-90	0	150	69	76	7	3.0	8.5	0.2	32.2	6.0
and							110	128	18	0.5	0.0	0.0	1.4	0.5
DCRD080	789145	7450563	124	-70	131	202.2	172	175	3	1.1	1.5	0.1	6.3	1.7



## Upcoming Milestones

Q Mines is advancing several parallel workstreams as it progresses toward delivery of an updated Pre-Feasibility Study (PFS) in H2-2026. These activities are focused on increasing project definition, extending mine life, and optimising the economics of the Company's planned centralised processing plant at Mount Chalmers.

### Develin Creek

Drilling at the Sulphide City deposit has now been completed, with all assay results announced to the market. An updated Mineral Resource Estimate and pit optimisation will now be completed, forming the basis for underground mine design and mine planning at Sulphide City.

### Mount Mackenzie

Maiden drilling operations have begun at Mount Mackenzie. Upon completion of assay processing, the Company will deliver an updated Mineral Resource Estimate, pit optimisation, and open pit mine design and mine plan.

### Mine Design & Planning

Mine design and mine planning for Sulphide City and Mount Mackenzie will commence following completion of the updated Mineral Resource Estimates and underground optimisation.

### Metallurgical Testwork

PFS-level metallurgical testwork is progressing across Mount Chalmers, Develin Creek, and Mount Mackenzie. Results will inform processing route selection and integration into the broader project flowsheet.

### Integrated Development Studies

A standalone scoping study is in development to evaluate the technical, metallurgical, logistical, and economic suitability of combining feed from Mount Chalmers, Develin Creek, and Mount Mackenzie into a single integrated operation.

### PFS Update

Outputs from Develin Creek and Mount Mackenzie, including updated Mineral Resource Estimates, mine designs and mine plans, will be incorporated into financial modelling for the broader project. These workstreams will be integrated into an updated PFS for the Mount Chalmers hub, scheduled for completion in H2-2026.

## Forward-Looking Statements

This announcement may contain forward-looking statements, including statements regarding QMines Limited's planned exploration activities and development workstreams. Forward-looking statements are not statements of historical fact and are generally identified by words such as "could", "plan", "expect", "intend", "may", "potential", "should", and similar expressions. Although QMines believes that the expectations reflected in these forward-looking statements are reasonable, such statements involve risks and uncertainties, and no assurance can be given that future exploration or development activities will result in the estimation of additional Mineral Resources or the conversion of Mineral Resources to Ore Reserves. No Ore Reserves have been declared for the Mount Mackenzie Project at this stage.

## Competent Person Statement

### Competent Person Statement – Exploration Results

The information in this announcement that relates to mineral exploration results and exploration targets is based on work compiled under the supervision of Mr Tom Bartschi, a member of the Australian Institute of Geoscientists (AIG). Mr Bartschi is QMines' Principal Geologist and has sufficient experience relevant to the style of mineralisation and type of deposit under consideration, and to the activities being undertaken, to qualify as a Competent Person as defined in the 2012 Edition of the *Australasian Code for Reporting of Exploration Results, Mineral Resources and Ore Reserves* (JORC2012). Mr Bartschi consents to the inclusion in this announcement of the exploration information in the form and context in which it appears.

### Competent Person Statement – Mineral Resource Estimates

The information in this announcement that relates to Mineral Resource estimation for the Mount Chalmers, Develin Creek, and Mount Mackenzie deposits is based on work completed by Mr Stephen Hyland, a Competent Person and Fellow of the Australasian Institute of Mining and Metallurgy (AusIMM). Mr Hyland is a Principal Consultant Geologist with Hyland Geological and Mining Consultants (HGMC) and has sufficient experience relevant to the style of mineralisation and type of deposit under consideration, and to the activities being undertaken, to qualify as a Competent Person as defined in the 2012 Edition of the *Australasian Code for Reporting of Exploration Results, Mineral Resources and Ore Reserves* (JORC2012). Mr Hyland is also a Qualified Person under the requirements of Canadian National Instrument NI43-101. Mr Hyland consents to the inclusion in this announcement of the Mineral Resource information in the form and context in which it appears.

### Competent Person Statement – Ore Reserves and Pit Optimisation

The information in this announcement that relates to open pit optimisation and Ore Reserve estimates is based on information compiled by Mr Gary McCrae, a Competent Person and Member of the Australasian Institute of Mining and Metallurgy (AusIMM). Mr McCrae is a full time employee of Minecomp Pty Ltd and has sufficient experience relevant to the style of mineralisation and type of deposit under consideration, and to the activities being undertaken, to qualify as a Competent Person as defined in the 2012 Edition of the *Australasian Code for Reporting of Exploration Results, Mineral Resources and Ore Reserves* (JORC2012). Mr McCrae consents to the inclusion in this announcement of the matters based on his information in the form and context in which it appears.

## Ore Reserve - Mt Chalmers

Deposit <sup>1</sup>	Reserve Category	Tonnes (Mt)	Cut Off (% Cu)	Cu (%)	Au (g/t)	Zn (%)	Ag (g/t)	S (%)
Mt Chalmers	Proved	5.1	0.3%	0.72	0.58	0.25	4.70	5.80
Mt Chalmers	Probable	4.5	0.3%	0.57	0.37	0.29	5.50	3.60
<b>Total<sup>1</sup></b>		<b>9.6</b>	<b>0.3%</b>	<b>0.65</b>	<b>0.48</b>	<b>0.27</b>	<b>5.20</b>	<b>4.30</b>

## Mineral Resource Estimate - Mt Chalmers

Deposit <sup>2</sup>	Resource Category	Tonnes (Mt)	Cut Off (% Cu)	Cu (%)	Au (g/t)	Zn (%)	Ag (g/t)	S (%)
Mt Chalmers	Measured	4.2	0.3%	0.89	0.69	0.23	4.97	5.37
Mt Chalmers	Indicated	5.8	0.3%	0.69	0.28	0.19	3.99	3.77
Mt Chalmers	Inferred	1.3	0.3%	0.60	0.19	0.27	5.41	2.02
<b>Total<sup>1</sup></b>		<b>11.3</b>	<b>0.3%</b>	<b>0.75</b>	<b>0.42</b>	<b>0.23</b>	<b>4.60</b>	<b>4.30</b>

## Mineral Resource Estimate - Develin Creek

Deposit	Resource Category	Tonnes (Mt)	Cut Off (% Cu)	Cu (%)	Zn (%)	Au (g/t)	Ag (g/t)	Not in Mine Plan
Develin Creek	Indicated	2.9	0.3%	1.09	0.98	0.15	6.04	
Develin Creek	Inferred	1.3	0.3%	0.81	1.58	0.16	6	
<b>Total<sup>2</sup></b>		<b>4.2</b>	<b>0.3%</b>	<b>1.01</b>	<b>1.16</b>	<b>0.15</b>	<b>6</b>	

## Mineral Resource Estimate - Mt Mackenzie

Deposit <sup>3</sup>	Resource Category	Tonnes (Mt)	Cut Off (g/t Au) *	Cu (%)	Au (g/t)	Zn (%)	Ag (g/t)	Not in Mine Plan
Mt Mackenzie	Indicated	2.27	0.5 / 0.7g/t	-	1.38	-	9.6	
Mt Mackenzie	Inferred	1.08	0.5 / 0.7g/t	-	1.45	-	5.8	
<b>Total<sup>4</sup></b>		<b>3.35</b>	<b>0.5 / 0.7g/t</b>	<b>-</b>	<b>1.40</b>	<b>-</b>	<b>8.4</b>	

## Mineral Resource Estimate - Woods Shaft

Deposit <sup>4</sup>	Resource Category	Tonnes (Mt)	Cut Off (% Cu)	Cu (%)	Au (g/t)	Zn (%)	Ag (g/t)	Not in Mine Plan
Woods Shaft	Inferred	0.54	0.3%	0.50	0.95	-	-	
<b>Total<sup>3</sup></b>		<b>0.54</b>	<b>0.3%</b>	<b>0.50</b>	<b>0.95</b>	<b>-</b>	<b>-</b>	

<sup>1</sup> ASX Announcement – [Mt Chalmers PFS Supports Viable Copper & Gold Mine](#), 30 April 2024.

<sup>2</sup> ASX Announcement – [Develin Creek Resource Upgrade Improves Growth & Development Potential](#), 12 March 2025.

<sup>3</sup> ASX Announcement – [Maiden Woods Shaft Resource](#), 22 November 2022.

<sup>4</sup> ASX Announcement – [Resource Upgrade At Mount Mackenzie Gold & Silver Project](#), 9 July 2025.

## About QMiners

QMiners Limited (**ASX:QML**) is a Queensland focused copper and gold exploration and development company. The Company owns rights to 100% of The Mt Chalmers (copper-gold), Develin Creek (copper-zinc), and Mt MacKenzie (gold-silver) deposits, located within 150km of Rockhampton in Central Queensland.

Mt Chalmers is a high-grade historic mine that produced 1.2Mt @ 2.0% Cu, 3.6g/t Au and 19g/t Ag between 1898-1982.

## Project & Ownership

Mt Chalmers	<div><div></div></div> 100%
Develin Creek	<div><div></div></div> 100%
Mount Mackenzie	<div><div></div></div> 100%

## QMiners Limited

ACN 643 312 104

**ASX:QML**

**Shares  
on Issue**

634,763,514

**Unlisted  
Options**

38,000,000

Following several resource updates, Mt Chalmers and Develin Creek now have Measured, Indicated and Inferred Resources (JORC 2012) of **15.5Mt @ 0.82% Cu, 0.35g/t Au, 0.47% Zn & 5g/t Ag**.<sup>1</sup>

QMiners' objective is to make new discoveries, commercialise existing deposits and transition the Company towards sustainable copper production.

## Directors & Management

**Andrew Sparke**  
Executive Chairman

**James Anderson**  
General Manager  
Operations

**Peter Caristo**  
Non-Executive Director  
(Technical)

**Elissa Hansen**  
Non-Executive  
Director & Company  
Secretary

**Thomas Bartschi**  
Exploration Manager  
(Competent Person)

## Compliance Statement

With reference to previously reported Exploration results and mineral resources, the Company confirms that it is not aware of any new information or data that materially affects the information included in the original market announcement and, in the case of estimates of Mineral Resources or Ore Reserves, that all material assumptions and technical parameters underpinning the estimates in the relevant market announcement continue to apply and have not materially changed. The company confirms that the form and context in which the Competent Person's findings are presented have not been materially modified from the original market announcement.

<sup>1</sup>. ASX Announcement – [Develin Creek Resource Upgrade](#), 12 March 2025

## Contacts

**Registered Address**  
Suite J, 34 Suakin Drive,  
Mosman NSW 2088

**Postal Address**  
PO Box 36, Mosman NSW 2088

**Telephone**  
+ 61 (2) 8915 6241

**Email**  
[info@qminers.com.au](mailto:info@qminers.com.au)

**Website**  
[qminers.com.au](http://qminers.com.au)

**Peter Nesvada**  
Investor Relations  
[peter@qminers.com.au](mailto:peter@qminers.com.au)

**Andrew Sparke**  
Executive Chairman  
[andrew@qminers.com.au](mailto:andrew@qminers.com.au)



## Section 1 Sampling Techniques and Data

(Criteria in this section apply to all succeeding sections.)

Criteria	JORC Code explanation	Commentary
<b>Sampling techniques</b>	<ul style="list-style-type: none"> <li><i>Nature and quality of sampling (e.g. cut channels, random chips, or specific specialised industry standard measurement tools appropriate to the minerals under investigation, such as down hole gamma sondes, or handheld XRF instruments, etc.). These examples should not be taken as limiting the broad meaning of sampling.</i></li> <li><i>Include reference to measures taken to ensure sample representivity and the appropriate calibration of any measurement tools or systems used.</i></li> <li><i>Aspects of the determination of mineralisation that are Material to the Public Report.</i></li> <li><i>In cases where ‘industry standard’ work has been done this would be relatively simple (e.g. ‘reverse circulation drilling was used to obtain 1 m samples from which 3 kg was pulverised to produce a 30 g charge for fire-assay’). In other cases more explanation may be required, such as where there is coarse gold that has inherent sampling problems. Unusual commodities or mineralisation types (e.g. submarine nodules) may warrant disclosure of detailed information.</i></li> </ul>	<ul style="list-style-type: none"> <li>At Mount Mackenzie, exploration drilling comprised a combination of reverse circulation (RC) and diamond drilling. <ul style="list-style-type: none"> <li>RC samples were collected at nominal 1m intervals on a whole hole basis, with all drilled intervals sampled and no selective sampling applied. Samples were collected via a cyclone and split using a cone splitter to produce representative samples of each drilled interval. No composite sampling was applied.</li> <li>Diamond drilling was completed using HQ3 triple tube core to maximise core recovery, particularly in fractured or altered ground. Core was oriented where conditions permitted and all core was marked up, logged, and photographed (wet and dry). Diamond drilling comprised both systematically sampled holes. Where diamond core was sampled for assay, sampling was undertaken on nominal 1m intervals with half core submitted for analysis. Where diamond holes were completed for characterisation purposes, any sampling undertaken was selective and focused on geological features only and is not considered representative for grade reporting.</li> </ul> </li> <li>At Develin Creek, diamond drilling was completed as tails to existing RC precollars using HQ3 triple tube core to maximise recovery. Core was oriented where conditions permitted and all core was marked up, logged, and photographed (wet and dry). <ul style="list-style-type: none"> <li>Diamond core was systematically sampled on nominal 1m intervals. Core was halved longitudinally using a diamond blade core saw, with one half retained for reference and the other half submitted for laboratory analysis. Sampling</li> </ul> </li> </ul>

Criteria	JORC Code explanation	Commentary
		<p>intervals were designed to be consistent with the existing RC dataset to facilitate direct integration of RC and diamond assay data within the resource model.</p> <ul style="list-style-type: none"> <li>The massive sulphide mineralisation style at Develin Creek is generally homogeneous on a metre scale, and sampling at 1m intervals is considered appropriate and representative for this deposit type.</li> </ul>
<b>Drilling techniques</b>	<ul style="list-style-type: none"> <li>Drill type (e.g. core, reverse circulation, open-hole hammer, rotary air blast, auger, Bangka, sonic, etc.) and details (e.g. core diameter, triple or standard tube, depth of diamond tails, face-sampling bit or other type, whether core is oriented and if so, by what method, etc.).</li> </ul>	<ul style="list-style-type: none"> <li>RC drilling was completed using a KWL350 RC drill rig equipped with a 5½inch face sampling hammer bit. Upper weathered sections were PVC cased to maintain collar integrity and minimise collar collapse and potential sample contamination.</li> <li>Diamond drilling was undertaken using a Sandvik 720 HQ3 core diameter with triple tube configuration, including both standalone diamond holes and diamond tails where required to obtain continuous core through key alteration and structural zones.</li> </ul>
<b>Drill sample recovery</b>	<ul style="list-style-type: none"> <li>Method of recording and assessing core and chip sample recoveries and results assessed.</li> <li>Measures taken to maximise sample recovery and ensure representative nature of the samples.</li> <li>Whether a relationship exists between sample recovery and grade and whether sample bias may have occurred due to preferential loss/gain of fine/coarse material.</li> </ul>	<ul style="list-style-type: none"> <li>RC sample recovery was visually assessed during drilling and was generally good. Adequate air pressure was maintained to ensure dry samples, with material passed through a cyclone prior to splitting. Some localised variation in recovery was observed and is considered typical for the lithologies intersected. No consistent relationship between RC recovery and grade has been identified.</li> <li>Diamond core recovery was measured for each drill run and was generally high, averaging greater than 95% overall. Localised reductions in recovery were observed in structurally complex zones but were not systematic. No relationship between core recovery and grade has been identified and no material sampling bias due to core loss is considered to have occurred.</li> </ul>
<b>Logging</b>	<ul style="list-style-type: none"> <li>Whether core and chip samples have been geologically and geotechnically logged to a level of detail to support appropriate Mineral Resource estimation, mining studies and metallurgical studies.</li> </ul>	<ul style="list-style-type: none"> <li>Gold was analysed by 25g fire-assay with AAS finish (Au AA25), and silver by aqua regia digest with AAS finish (Ag AA45). Samples exceeding analytical detection limits will be re-assayed using higher range methods where</li> </ul>

Criteria	JORC Code explanation	Commentary
	<ul style="list-style-type: none"> <li>Whether logging is qualitative or quantitative in nature. Core (or costean, channel, etc.) photography.</li> <li>The total length and percentage of the relevant intersections logged.</li> </ul>	<p>required. Selected samples may also undergo multi element analysis.</p> <ul style="list-style-type: none"> <li>Laboratory QAQC included internal standards and blanks. Company QAQC procedures included the insertion of certified reference materials, blanks, and field duplicates. QAQC results indicate acceptable accuracy and precision with no material bias identified.</li> </ul>
<b>Sub-sampling techniques and sample preparation</b>	<ul style="list-style-type: none"> <li>If core, whether cut or sawn and whether quarter, half or all core taken.</li> <li>If non-core, whether riffled, tube sampled, rotary split, etc. and whether sampled wet or dry.</li> <li>For all sample types, the nature, quality and appropriateness of the sample preparation technique.</li> <li>Quality control procedures adopted for all sub-sampling stages to maximise representivity of samples.</li> <li>Measures taken to ensure that the sampling is representative of the in-situ material collected, including for instance results for field duplicate/second-half sampling.</li> <li>Whether sample sizes are appropriate to the grain size of the material being sampled.</li> </ul>	<ul style="list-style-type: none"> <li>RC samples were collected using a cyclone and cone splitter and recorded as wet or dry. Sample quality and QAQC information were recorded on standard sampling sheets during drilling. Samples were submitted to ALS Laboratories for preparation and analysis.</li> <li>Where diamond core was sampled, HQ3 core was halved longitudinally using a diamond blade core saw. One half was submitted for laboratory analysis and the remaining half retained for reference. Sample lengths averaged approximately 1.0m. Sample sizes are considered appropriate for the observed mineralisation styles and grain size.</li> </ul>
<b>Quality of assay data and laboratory tests</b>	<ul style="list-style-type: none"> <li>The nature, quality and appropriateness of the assaying and laboratory procedures used and whether the technique is considered partial or total.</li> <li>For geophysical tools, spectrometers, handheld XRF instruments, etc., the parameters used in determining the analysis including instrument make and model, reading times, calibrations factors applied and their derivation, etc.</li> <li>Nature of quality control procedures adopted (e.g. standards, blanks, duplicates, external laboratory checks) and whether acceptable levels of accuracy (i.e. lack of bias) and precision have been established.</li> </ul>	<ul style="list-style-type: none"> <li>The Analytical techniques for Mount Mackenzie employed were: <ul style="list-style-type: none"> <li>Gold was analysed by 25g fire-assay with AAS finish (Au-AA25), and silver by aqua regia digest with AAS finish (Ag-AA45). Of 536 silver assays, seven exceeded the upper detection limit, representing approximately 1.3% of samples. This proportion is considered appropriate for the mineralisation style and grade distribution observed. Samples returning over-detection-limit silver values will be re-assayed using an appropriate higher-range method. Selected samples may also undergo multi-element analysis where warranted. Laboratory QAQC included internal standards and blanks. Company QAQC comprised insertion of certified OREAS reference materials, blanks, and duplicates. QAQC results indicate acceptable accuracy and precision with no material bias identified.</li> </ul> </li> <li>The Analytical techniques for Develin Creek employed were: <ul style="list-style-type: none"> <li>ICP-AES for base metals (Laboratory code ME-ICP61).</li> </ul> </li> </ul>

Criteria	JORC Code explanation	Commentary
		Gold was analysed via fire-assay (AU-AA25). Re-analysis of elevated (>1%) base metal samples was done, with additional multi-element ICP analysis on select mineralised intervals (Laboratory code Cu-OG62 and Zn-OG62).
<b>Verification of sampling and assaying</b>	<ul style="list-style-type: none"> <li>The verification of significant intersections by either independent or alternative company personnel.</li> <li>The use of twinned holes.</li> <li>Documentation of primary data, data entry procedures, data verification, data storage (physical and electronic) protocols.</li> <li>Discuss any adjustment to assay data.</li> </ul>	<ul style="list-style-type: none"> <li>All geological and sampling data were recorded in the field using standard paper logs and subsequently entered into digital databases with validation checks. No adjustments to assay data were made.</li> </ul>
<b>Location of data points</b>	<ul style="list-style-type: none"> <li>Accuracy and quality of surveys used to locate drill holes (collar and down-hole surveys), trenches, mine workings and other locations used in Mineral Resource estimation.</li> <li>Specification of the grid system used.</li> <li>Quality and adequacy of topographic control.</li> </ul>	<ul style="list-style-type: none"> <li>Drill collars were surveyed using handheld GPS with an accuracy of approximately 3m and will be verified by licensed surveyors. Downhole surveys were completed using a gyroscopic tool at 30m intervals. Coordinates are reported in GDA94 Zone55. Topographic control is based on Queensland Government LiDAR data and is considered adequate for current modelling and interpretation.</li> </ul>
<b>Data spacing and distribution</b>	<ul style="list-style-type: none"> <li>Data spacing for reporting of Exploration Results.</li> <li>Whether the data spacing and distribution is sufficient to establish the degree of geological and grade continuity appropriate for the Mineral Resource and Ore Reserve estimation procedure(s) and classifications applied.</li> <li>Whether sample compositing has been applied.</li> </ul>	<ul style="list-style-type: none"> <li>At Mount Mackenzie, drill hole spacing is approximately 25m along and across strike, which is considered appropriate to support geological and grade continuity for Inferred and locally Indicated Mineral Resource classification. No sample compositing has been applied. RC samples were collected at nominal 1m intervals.</li> </ul>
<b>Orientation of data in relation to geological structure</b>	<ul style="list-style-type: none"> <li>Whether the orientation of sampling achieves unbiased sampling of possible structures and the extent to which this is known, considering the deposit type.</li> <li>If the relationship between the drilling orientation and the orientation of key mineralised structures is considered to have introduced a sampling bias, this should be assessed and reported if material.</li> </ul>	<ul style="list-style-type: none"> <li>Mineralisation is interpreted to dip toward approximately 245°. Drill holes were generally oriented with azimuths of approximately 65°, resulting in drilling that is broadly perpendicular to the interpreted mineralisation trend. Where drilling was completed in fences, drill sections were oriented along 65°. Drill orientations are considered suitable overall and no material sampling bias is recognised. Reported intercepts are downhole lengths and true widths are not yet well constrained. MMRC001 and MMRC003 were drilled vertically due to drill pad constraints.</li> </ul>



Criteria	JORC Code explanation	Commentary
<b>Sample security</b>	<ul style="list-style-type: none"> <li>The measures taken to ensure sample security.</li> </ul>	<ul style="list-style-type: none"> <li>RC samples were bagged on site by company personnel, consolidated into bulk bags, and transported by a third-party contractor to ALS Laboratories in Townsville.</li> </ul>
<b>Audits or reviews</b>	<ul style="list-style-type: none"> <li>The results of any audits or reviews of sampling techniques and data.</li> </ul>	<ul style="list-style-type: none"> <li>No audits or reviews of sampling techniques or data have been completed for the current program.</li> </ul>

## Section 2 Reporting of Exploration Results

(Criteria listed in the preceding section also apply to this section.)

Criteria	JORC Code explanation	Commentary
<b>Mineral tenement and land tenure status</b>	<ul style="list-style-type: none"> <li>Type, reference name/number, location and ownership including agreements or material issues with third parties such as joint ventures, partnerships, overriding royalties, native title interests, historical sites, wilderness or national park and environmental settings.</li> <li>The security of the tenure held at the time of reporting along with any known impediments to obtaining a licence to operate in the area.</li> </ul>	<ul style="list-style-type: none"> <li>The Mount Mackenzie Project comprises MDL2008 and EPM10006, held 100% by QMines Limited. The project is located on freehold pastoral land approximately 120km northwest of Rockhampton. The tenements are in good standing with no known impediments to exploration or development.</li> </ul>
<b>Exploration done by other parties</b>	<ul style="list-style-type: none"> <li>Acknowledgment and appraisal of exploration by other parties.</li> </ul>	<ul style="list-style-type: none"> <li>Previous operators include Australian Consolidated Exploration, Utah Development, Peabody, Freeport McMoran, Dragon Mining, Coolgardie Gold SmartTrans, and Newcrest Mining between 1975 and 2008. Historical work included drilling, surface sampling, mapping, and geophysical surveys.</li> </ul>
<b>Geology</b>	<ul style="list-style-type: none"> <li>Deposit type, geological setting and style of mineralisation.</li> </ul>	<ul style="list-style-type: none"> <li>Mount Mackenzie is a Late Carboniferous high-sulphidation epithermal gold-silver system associated with the Connors Magmatic Arc of the New England Fold Belt.</li> </ul>
<b>Drill hole Information</b>	<ul style="list-style-type: none"> <li>A summary of all information material to the understanding of the exploration results including a tabulation of the following information for all Material drill holes: <ul style="list-style-type: none"> <li>easting and northing of the drill hole collar</li> <li>elevation or RL (Reduced Level – elevation above sea</li> </ul> </li> </ul>	<ul style="list-style-type: none"> <li>All drilling relevant to providing material context for the reported exploration results has been used. Drill hole collar locations, orientations, depths, and significant intercepts are reported in the body of the announcement.</li> </ul>

Criteria	JORC Code explanation	Commentary
	<p>level in metres) of the drill hole collar</p> <ul style="list-style-type: none"> <li>dip and azimuth of the hole</li> <li>down hole length and interception depth</li> <li>hole length.</li> </ul> <p>If the exclusion of this information is justified on the basis that the information is not Material and this exclusion does not detract from the understanding of the report, the Competent Person should clearly explain why this is the case.</p>	
<b>Data aggregation methods</b>	<ul style="list-style-type: none"> <li>In reporting Exploration Results, weighting averaging techniques, maximum and/or minimum grade truncations (e.g. cutting of high grades) and cut-off grades are usually Material and should be stated.</li> <li>Where aggregate intercepts incorporate short lengths of high-grade results and longer lengths of low-grade results, the procedure used for such aggregation should be stated and some typical examples of such aggregations should be shown in detail.</li> <li>The assumptions used for any reporting of metal equivalent values should be clearly stated.</li> </ul>	<ul style="list-style-type: none"> <li>Intercepts are reported as length-weighted downhole composites using a 0.2g/t Au cut-off. No top-cut has been applied, however some silver assays exceeded the upper detection limit of 100 g/t. Where this occurred, a grade of 100 g/t Ag was used in the reported composite calculations. Silver is considered a secondary element of interest.</li> </ul>
<b>Relationship between mineralisation widths and intercept lengths</b>	<ul style="list-style-type: none"> <li>These relationships are particularly important in the reporting of Exploration Results.</li> <li>If the geometry of the mineralisation with respect to the drill hole angle is known, its nature should be reported.</li> <li>If it is not known and only the down hole lengths are reported, there should be a clear statement to this effect (e.g. 'down hole length, true width not known').</li> </ul>	<ul style="list-style-type: none"> <li>Reported intercepts are downhole lengths. True widths are not yet well constrained and will be assessed during resource modelling.</li> </ul>
<b>Diagrams</b>	<ul style="list-style-type: none"> <li>Appropriate maps and sections (with scales) and tabulations of intercepts should be included for any significant discovery being reported. These should include, but not be limited to a plan view of drill hole collar locations and appropriate sectional views.</li> </ul>	<ul style="list-style-type: none"> <li>Location maps, drill hole plans, cross-sections, and intercept tables are presented in the body of the announcement.</li> </ul>
<b>Balanced reporting</b>	<ul style="list-style-type: none"> <li>Where comprehensive reporting of all Exploration Results is not practicable, representative reporting of both low and high grades and/or widths should be practiced to avoid misleading reporting of Exploration Results.</li> </ul>	<ul style="list-style-type: none"> <li>All drill holes with assays received to date are reported. Results are consistent with historical drilling and represent infill drilling within previously defined mineralised zones.</li> </ul>
<b>Other substantive</b>	<ul style="list-style-type: none"> <li>Other exploration data, if meaningful and material, should be reported including (but not limited to): geological observations; geophysical survey results; geochemical</li> </ul>	<ul style="list-style-type: none"> <li>Previous exploration included geological mapping, surface sampling, and geophysical surveys including aeromagnetics, induced polarisation, and</li> </ul>

Criteria	JORC Code explanation	Commentary
<b>exploration data</b>	<i>survey results; bulk samples – size and method of treatment; metallurgical test results; bulk density, groundwater, geotechnical and rock characteristics; potential deleterious or contaminating substances.</i>	electromagnetics.
<b>Further work</b>	<ul style="list-style-type: none"> <li><i>The nature and scale of planned further work (e.g. tests for lateral extensions or depth extensions or large-scale step-out drilling).</i></li> <li><i>Diagrams clearly highlighting the areas of possible extensions, including the main geological interpretations and future drilling areas, provided this information is not commercially sensitive.</i></li> </ul>	<ul style="list-style-type: none"> <li>Planned work includes an updated Mineral Resource Estimate incorporating new drilling, pit optimisation and shell design, further RC drilling to test extensions of mineralisation, validation drilling where required, additional metallurgical testing, and regional exploration supported by geophysical and geochemical interpretation.</li> </ul>

For personal use only



ASX:QML

**QMINES**

Sustainable  
Australian  
Copper

[qmines.com.au](http://qmines.com.au)