



## KAILI RESOURCES LIMITED AGM Presentation

**Aircore Drilling at Lameroo -2025**



**Structurally Deformed Warramunga Sediments**



19 December 2025

# Disclaimer

Certain statements contained in this presentation, including information as to the future financial or operating performance of Kaili Resources Limited and its projects, are forward-looking statements. Such forward looking statements:

- Are necessarily based upon a number of assumptions and estimates that, while considered reasonable by Kaili Resources Limited, are inherently subject to significant technical, business, economic, competitive, political and social uncertainties and contingencies;
- Involve known and unknown risks and uncertainties that could cause actual events or results to differ materially from estimated or anticipated events or results reflected in such forward-looking statements; and
- May include, among other things, statements regarding targets, estimates and assumptions in respect of production, prices, operating costs, results, capital expenditures, reserves and resources, and are or may be based on assumptions and estimates related to future technical, economic, market, political, social and other conditions.

Kaili Resources Limited disclaims any intent or obligation to update publicly any forward-looking statements, whether as a result of new information, future events or otherwise.

All forward-looking statements made in this presentation are qualified by the foregoing cautionary statements. Investors are cautioned that forward-looking statements are not guarantees of future performance and accordingly investors are cautioned not to rely on forward-looking statements due to the inherent uncertainty therein.

The information in this presentation relates to exploration results and is based on information compiled by Mr Mark Derriman, Member of the Australasian Institute of Geoscientist. Mr Derriman has sufficient experience that is relevant to the style of mineralisation and type of deposits under consideration and to the activities which he is undertaking to qualify as a Competent Person as defined in the 2012 Edition of the JORC Australasian Code for Reporting of Exploration Results, Mineral Resources and Ore Reserves.

# Business Objectives

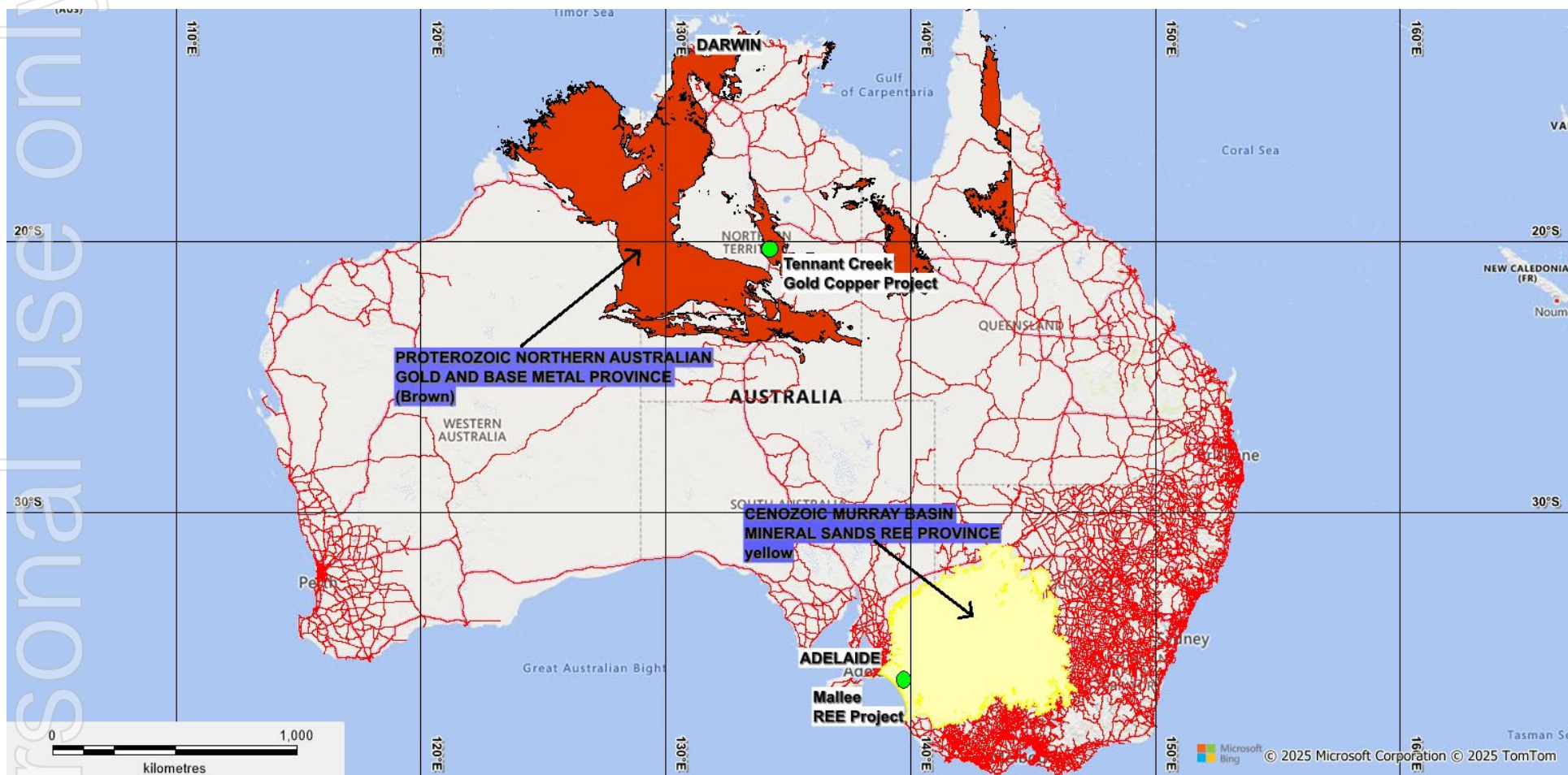
- ❖ **Project generation leading to Mineral Exploration and potential Mineral Resource Estimates**
- ❖ **Exploration for Rare Earth Elements (“REE”) in existing tenements**
- ❖ **Acquisition of Advanced Gold and Base Metal Exploration Projects**

Current exploration projects in Australia are:

- Murray Basin: Mallee Project– Rare Earth Elements – South Australia
- Warramunga Province: Tennant Creek Project – Gold and Base Metals – Northern Territory



# KAILI RESOURCES PROJECT LOCATIONS



# KAILI RESOURCES TENEMENT REGISTER

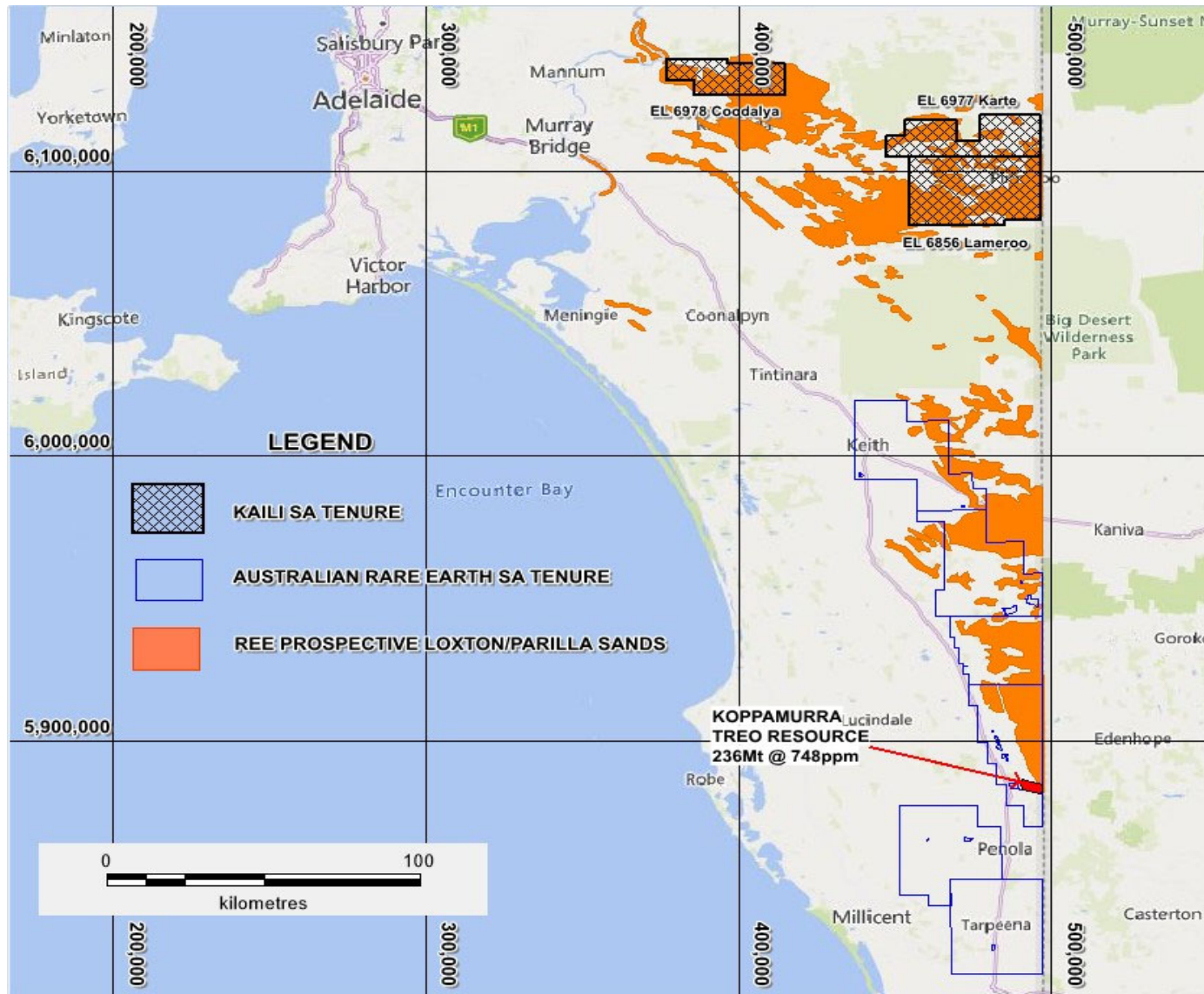


Granted	Tenement	Name	Commodity	Region	Registered Holder	Beneficial Interest	Area	Status
							Km <sup>2</sup>	
19/10/2022	EL6856	Lameroo	Rare Earth	SA - Murray Basin	Kaili Gold Pty Ltd	100%	991.0	Expiry on 18/10/2028
15/02/2024	EL 6977	Karte	Rare Earth	SA - Murray Basin	Kaili Gold Pty Ltd	100%	590.0	Expiry on 14/02/2030
15/02/2024	EL 6978	Coodalya	Rare Earth	SA - Murray Basin	Kaili Gold Pty Ltd	100%	408.0	Expiry on 14/02/2030
Under application	ELA32666	Kovacs	Gold/Base Metals	NT-Warramunga Province	Kaili Gold Pty Ltd	100%	271.7	Application submitted 23/02/2021
						Total	2,630.2	

- The aim is to explore for REE contained within the fine clay fraction of Tertiary (65 to 2.5 Million Years Ago) Strandlines (“ionic clay style of deposit) reportedly existing in the region.
- The Company’s 3 tenements are in very prospective locations for REE covering 1,989 km<sup>2</sup>.
- Australian Rare Earths (ASX:AR3) has reported exploration success within their tenements in the region with estimated JORC 2012 resource of 236Mt @ 748ppm Total Rare Earth Oxides (TREO) (*see AR3 ASX Release of 30<sup>th</sup> September 2024*) and is conducting pre-feasibility studies for mining.
- REE have been designated critical minerals by Australia, EU, USGS and IEA and are used in rare earth permanent magnets for electric vehicles (EV), wind turbines and many electronic devices.

# SA - LIMESTONE COAST PROJECT

Location of tenements Lameroo, Karte and Coodalya



Lameroo Project located within the Murray Basin of South Australia

54 holes each of up to 18 metres deep have been drilled for a total of 972 metres. The drill holes were purposely widely spaced to cover large areas across the 3 tenements at low cost to direct the focus for subsequent infill drilling programs.

44 drill samples selected and submitted to ALS in Adelaide for the full suite of REE by Method ME MS81.

## **Significant \*Total Rare Earth Oxide (TREO) Results <sup>1</sup>:**

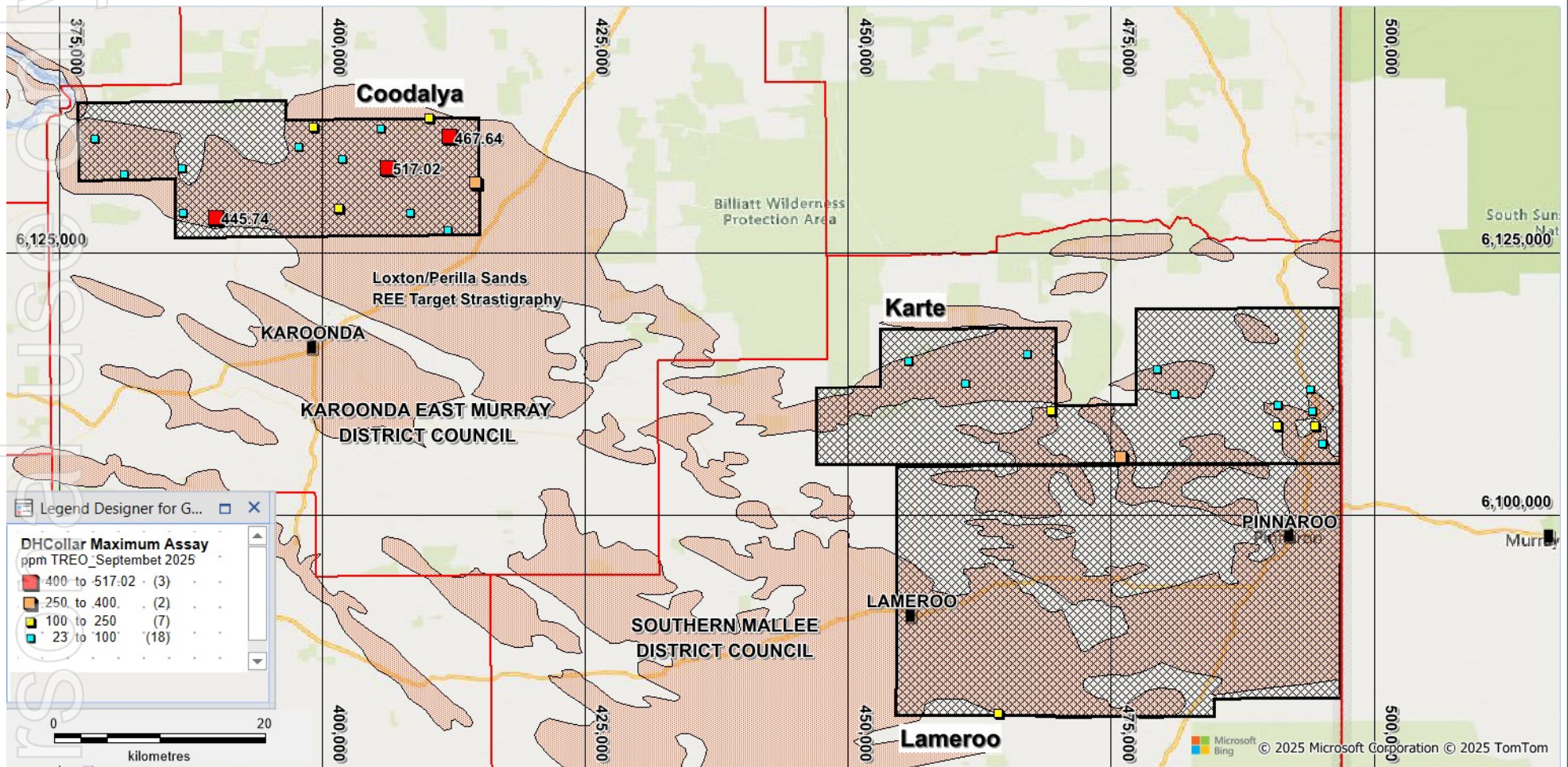
- 25 CDAC004 16-17m 1m@ 445.74ppm
- 25 CDAC019 8-9m 1m@ 517.02ppm
- 25CDAC024 5-6m 1m @ 467.64ppm
- 25KTAC013 13-14m 1m @ 321.31ppm

<sup>1</sup> ASX release of 20 November 2025.



# SA - LIMESTONE COAST PROJECT

Location of tenements Lameroo, Karte and Coodalya



Mallee Project September 2025 Aircore Drilling Maximum Lab TREO in hole

## 2026 Proposed Broad Exploration Plan:

- Additional road verge drilling across Karte, Coodalya and Lameroo.
- Infill Aircore drilling based on elevated results from the drilling.
- Grid based drilling if warranted by the results

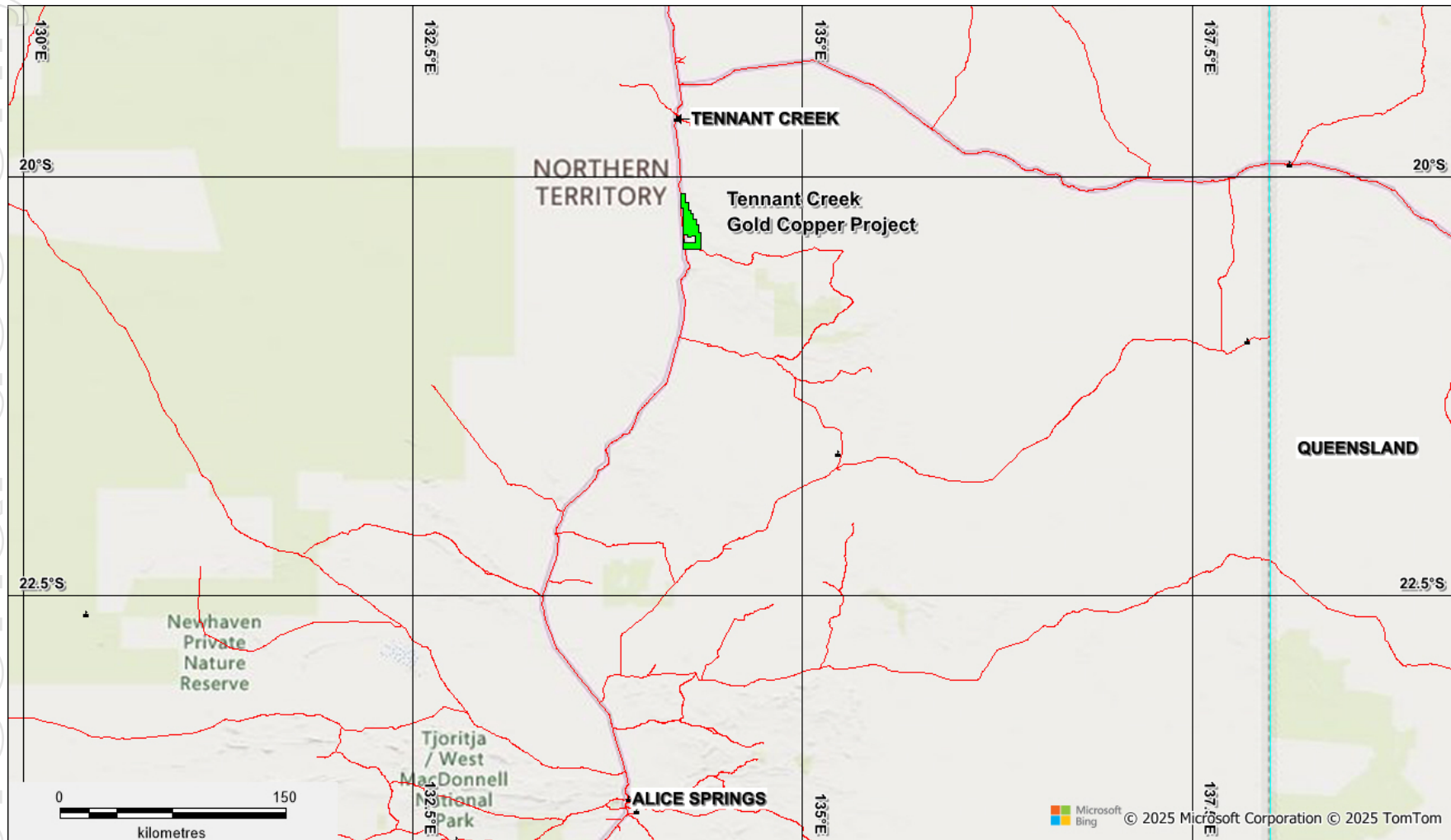
# NT - TENNANT CREEK

COPPER, GOLD and COBALT PROJECT (Kovacs tenement under application)



- Located in Gold mineralised Warramunga Province Region of the Northern Territory.
- Between 75 km South of Tennant Creek.
- Since 1932 the Tennant Creek Goldfield has produced 5M ounces (156 tonnes) of gold and 345,000 t of copper.
- The most significant mineralisation is associated with ironstone and vein quartz in Warramunga Sediments.
- There is a gold occurrence within the Kovacs tenement that has had a small amount of gold prospecting.

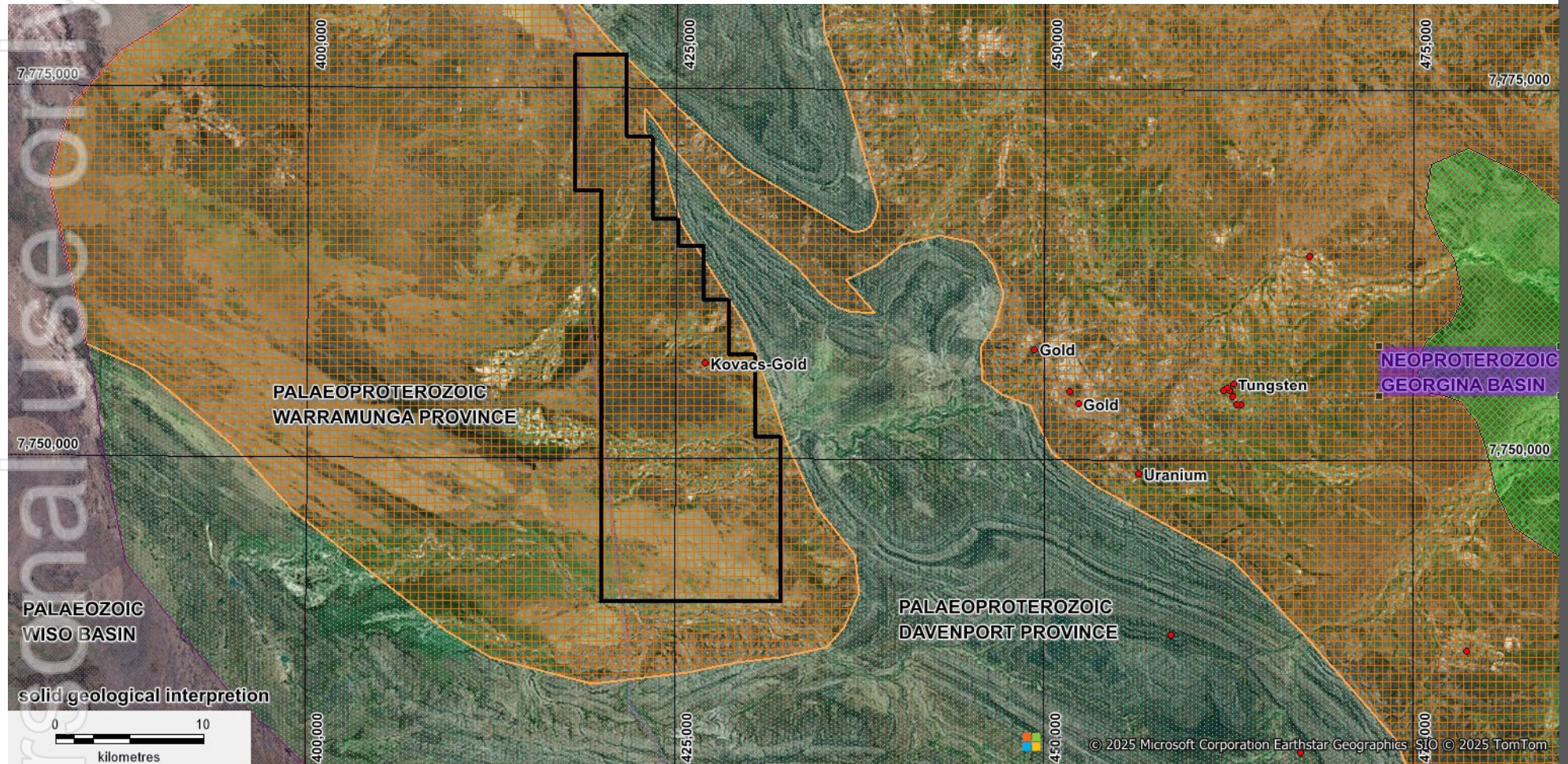
# NT - TENNANT CREEK PROJECT LOCATION



ELA 32666 Kovacs



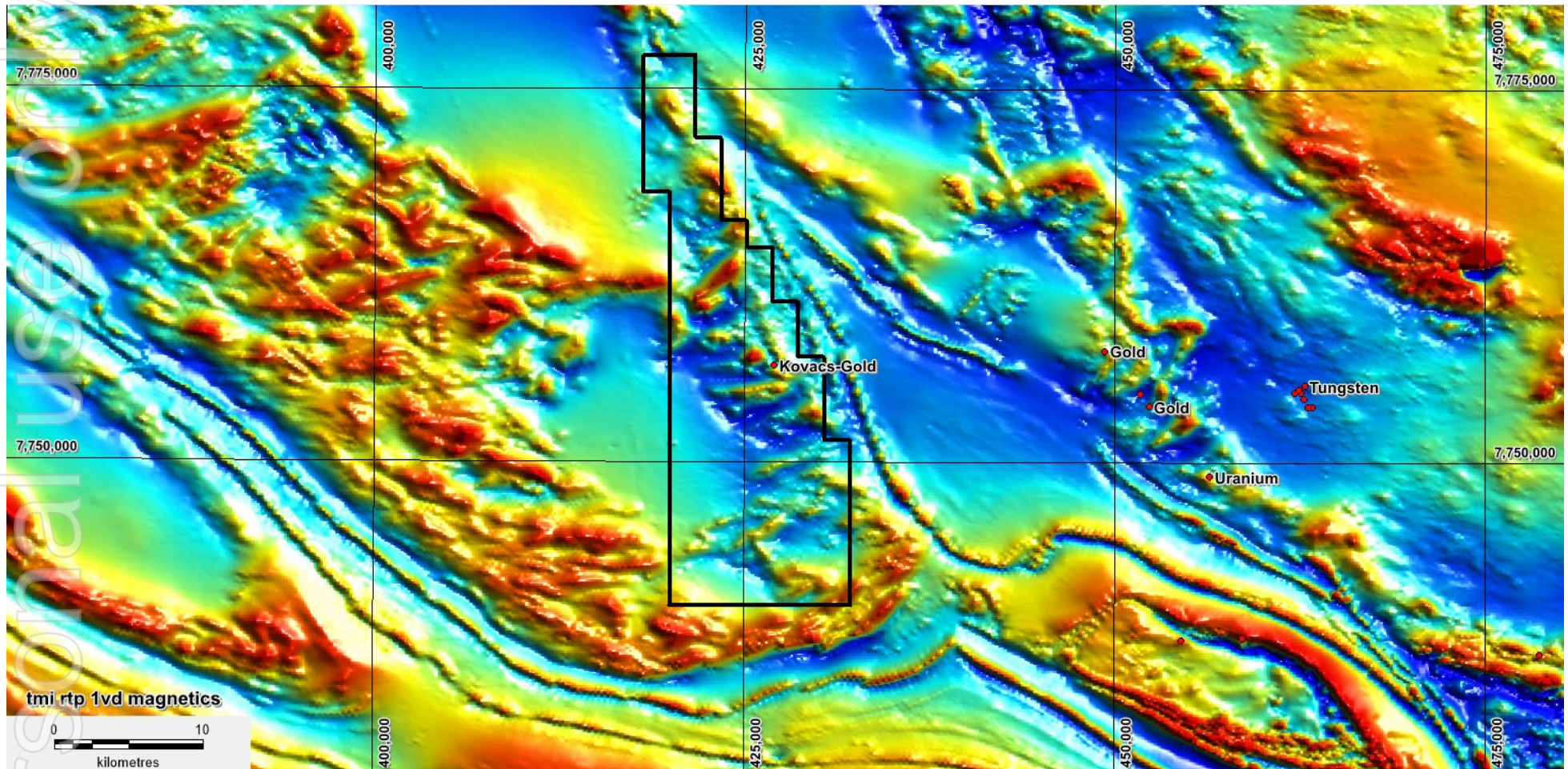
# NT - TENNANT CREEK INTERPRETED GEOLOGY KAILI



**Warramunga Province in brown and Mineral occurrences as red dots**



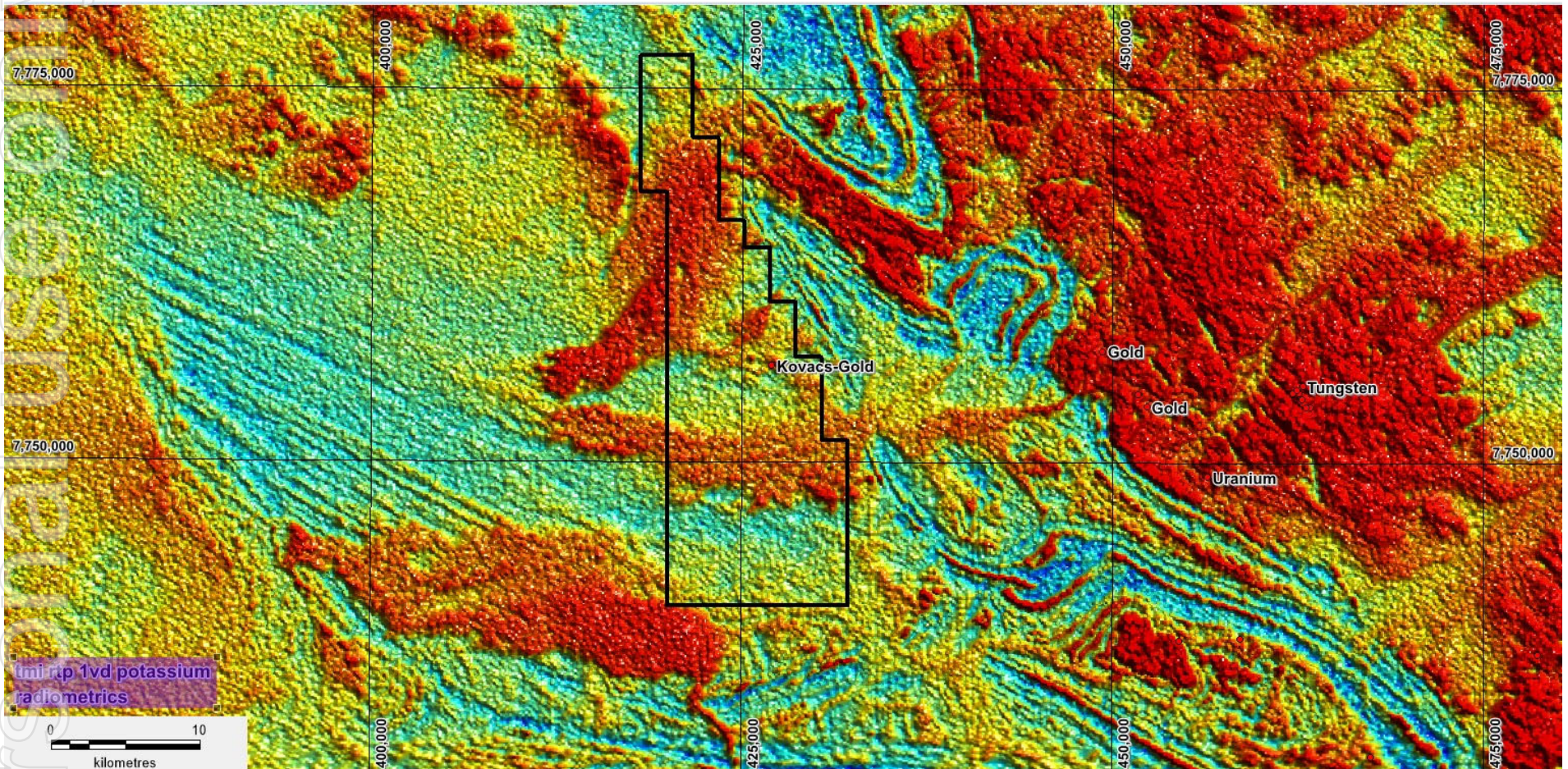
# NT - TENNANT CREEK INTERPRETED GEOLOGY KAILI



RTP 1VD Aeromagnetic Image of Kovacs Project



# NT - TENNANT CREEK MAGNETICS



Potassium Radiometric Image of the Kovacs Project

## **Proposed Broad Exploration Plan (subject to grant of Kovacs):**

- Ground magnetics and gravity survey across the tenement.
- Geological and Regolith mapping.
- Fine fraction soil sampling in selected areas in addition to rock sampling.
- Shallow Aircore/RC drilling in high priority areas as defined from the exploration outlined above.