

Appointment of Alternate Director

West Coast Silver Limited (ASX: WCE) (West Coast Silver or the Company) advises of the appointment of Mr Eugene Sharrock as an alternate director for Mr. Thomas Reddicliffe effective 9 January 2026.

Mr Sharrock is a Finance Executive who has over twenty years' experience in, mining services, exploration and development. He has sector experience in resources including critical minerals and has worked both in Australia and New Zealand.

This ASX announcement has been authorised for release by the Board of Directors of West Coast Silver Limited.

For further information, please contact:

Bruce Garlick
Executive Chairman
West Coast Silver Limited
E: info@westcoastsilver.com.au

The Elizabeth Hill Project

Elizabeth Hill is one of Australia's high-grade silver projects and has a proven production history outlined below:

- **High grades enabled low processing tonnes:** 1.2Moz of silver was produced from just 16,830t of ore at a head grade of 2,194g/t (70.5 oz/t Ag)¹.
- **Previous mining operation ceased in 2000:** because of low silver prices (US\$5)².
- **Simplistic historical processing technique:** native silver was recovered via **low-cost** gravity separation techniques.
- **Untapped potential remains** in ground with deposit open at depth and recent consolidation of land package offers potential to discover more Elizabeth Hill style deposits.
- **Tier 1 Mining Jurisdiction located on a mining lease** with potential processing option at the nearby Radio Hill site.

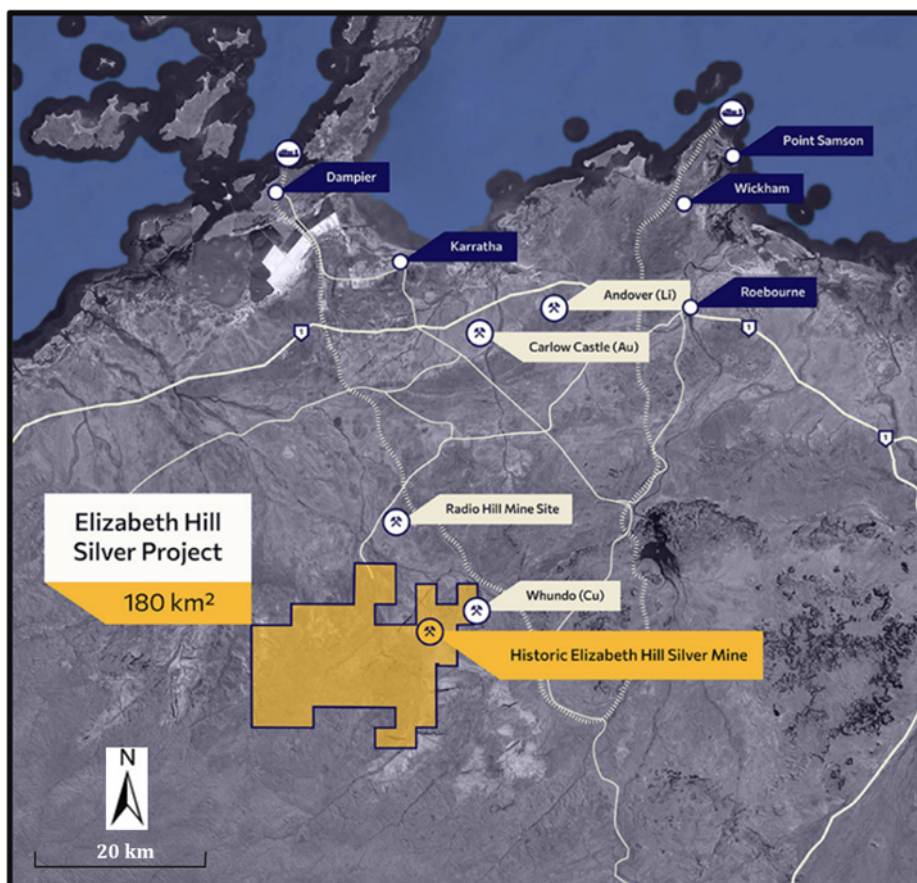


Figure.7. Tenement.Location

West Coast Silver has consolidated a contiguous 180km² package surrounding the historic Elizabeth Hill silver mine, with significant exploration and growth potential both near-mine and regionally. West Coast Silver's considerable tenure encompasses a significant portion of the Munni Munni fault system, as well as other fault systems subparallel to the Munni Munni fault system, which are considered prospective for Elizabeth Hill look-a-like silver deposits.

¹ WAMEX Annual Report, 1 April 2014 to 31 March 2015, Elizabeth Hill Silver Project, Global Strategic Metals NL, p16
² www.kitco.com/charts/silver