

BOLT CUTTER EMERGING AS A KEY SPOKE IN GROWING LITHIUM HUB

Highlights

- Drilling at Wildcat's Bolt Cutter Central discovery has intercepted lithium mineralisation over **more than 2km** in a north-westerly orientation and **up to 800m** in a north-easterly orientation (>40% increase)
- The Bolt Cutter Central pegmatite swarm **remains open** in most directions; the stacked pegmatites appear to **repeat at depth** and along strike
- Results have now been received for all holes in the 2025 drill program
- **Diamond drilling commences this month** aiming to further expand the scale of this discovery at depth and facilitate metallurgical testwork
- **RC drilling is planned for Q1 to step out** and infill the discovery for resource modelling
- Bolt Cutter Central is only 10km west of Wildcat's Tabbatabba Project in WA's Pilbara
- Wildcat remains well funded with \$51.2M as at 30 September 2025.

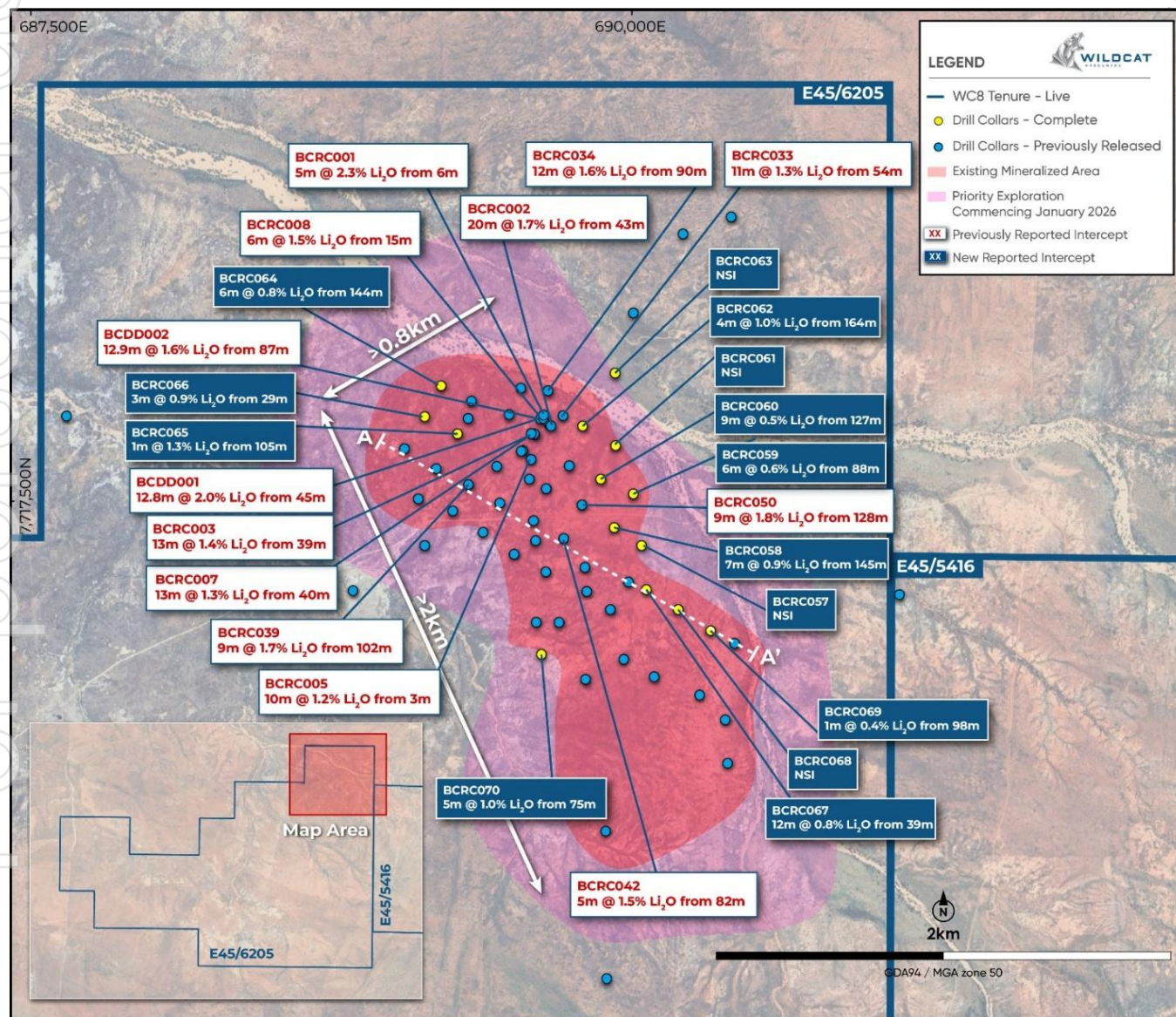


Figure 1: Plan of Bolt Cutter Central showing section line (Figure 2) and lithium intercepts (rounded to 1 decimal point). Mineralisation (>0.5% Li₂O) in the pegmatite swarms remain open in most directions.

Australian lithium explorer and developer Wildcat Resources Limited (ASX: WC8) ("Wildcat" or the "Company") is pleased to provide an update on its Bolt Cutter Central lithium discovery, located ~10km west of its Tabba Tabba Project, in the Pilbara region of WA (Figures 1-4). The Company recently received the remaining assay results from its 2025 drilling program at Bolt Cutter Central and is pleased to announce the initiation of its 2026 exploration program.

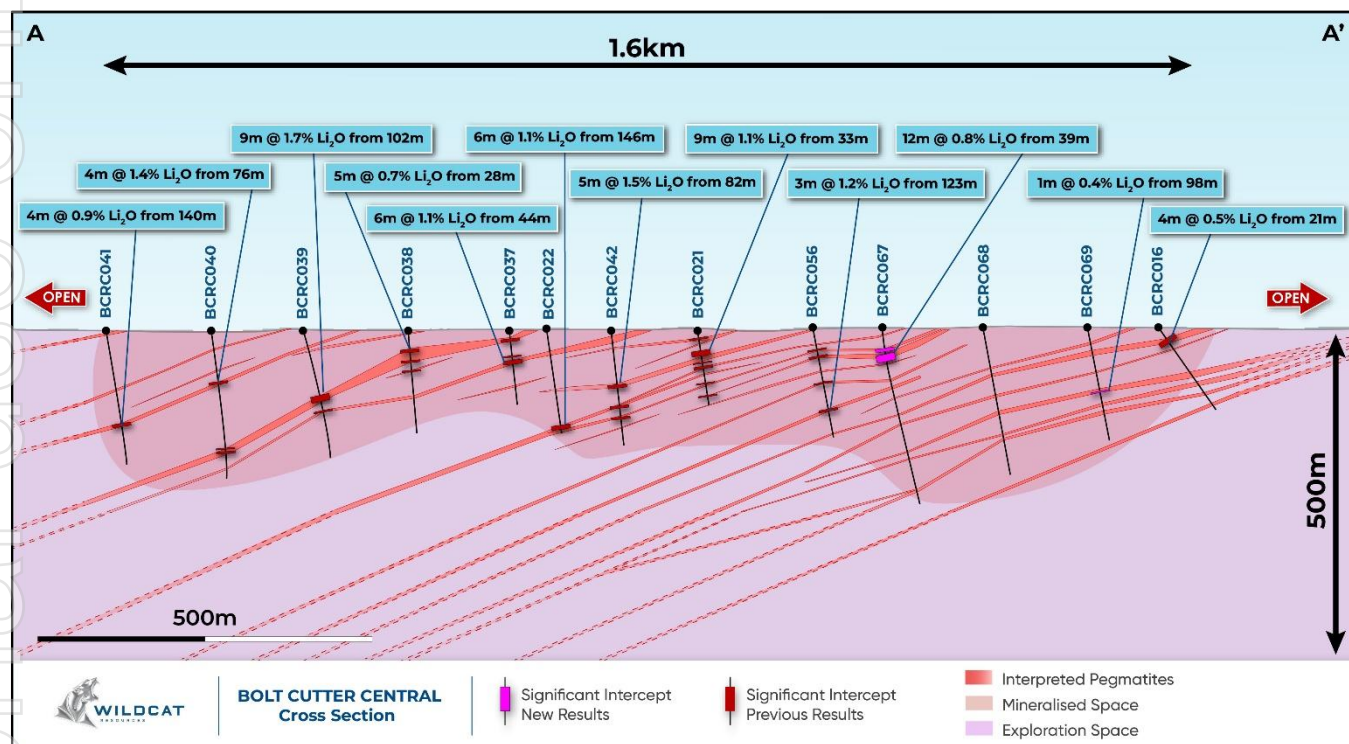


Figure 2: North-looking cross section through Bolt Cutter Central (along line A-A' on Figure 1). Future diamond drilling will target extensions above 500m depth from surface.

Bolt Cutter Central – 2025 program

Assay results for the remaining **14 drillholes** of Wildcat's 2025 drilling program at Bolt Cutter Central have now been received, extending the interpreted strike extent of the mineralised pegmatite system to **>2km in a north-westerly direction** and **~800m in a north-easterly direction** (Figure 1).

The scale of the discovery footprint highlights the potential for a **large mineralised system with multiple stacked dykes of pegmatite which remain open in most directions**.

The final drilling completed during 2025 focused on completing a continuous drill section approximately **1.6km in length**, aimed at defining the lateral extent of the mineralised pegmatite swarm. Results have now been returned for all holes along this section, confirming **mineralised pegmatite along the entire 1.6km section which remains open at both ends**, supporting prospectivity for further exploration.

Best results returned from Wildcat's 2025 exploration program at Bolt Cutter Central included:

- **20.0m @ 1.70% Li₂O** from 43.0m (BCRC002) (12.0m est. true width)
- **12.8m @ 2.02% Li₂O** from 45.3m (BCDD001) (est. true width)
- **12m @ 1.65% Li₂O** from 90m (BCRC034) (est. true width)
- **12.0m @ 1.30% Li₂O** from 39.0m (BCRC003) (est. true width)
- **14.0m @ 1.25% Li₂O** from 40.0m (BCRC007) (est. true width)
- **12.9m @ 1.6% Li₂O** from 86.9m (BCDD002) (7.6m est. true width)
- **11m @ 1.32% Li₂O** from 54m (BCRC033) (est. true width),
- **9.0m @ 1.84% Li₂O** from 128.0m (BCRC050) (est. true width)
- **9.0m @ 1.68% Li₂O** from 102.0m (BCRC039) (est. true width)
- **10.0m @ 1.2% Li₂O** from 3.0m (BCRC005) (est. true width)

- **6.0m @ 1.5% Li₂O** from 15.0m (BCRC008) (est. true width)
- **5.0m @ 2.31% Li₂O** from 6.0m (BCRC001) (est. true width)
- **5.0m @ 1.5% Li₂O** from 82.0m (BCRC042) (est. true width).

Newly returned results at Bolt Cutter Central included:

- **4m @ 1.02% Li₂O** from 164m (BCRC062) (est. true width)
- **6.0m @ 0.99% Li₂O** from 80.0m (BCRC058) (est. true width)
- **12m @ 0.78% Li₂O** from 39m (BCRC067) (est. true width)
- **5m @ 0.97% Li₂O** from 75m (BCRC070) (est. true width)

Bolt Cutter Central – 2026 Exploration

Diamond drilling at Bolt Cutter Central is scheduled to commence later this month, aiming to expand the scale of the deposit and to collect samples to support Phase 1 metallurgical testwork. A reverse circulation (RC) drilling program is planned to commence in late Q1, **exploring multiple targets to further extend mineralisation** and conducting infill drilling to **advance towards a maiden Mineral Resource estimate**.

Results to date demonstrate **strong potential for Bolt Cutter Central to grow in scale** both laterally and at depth (Figures 1 and 2). Wildcat considers Bolt Cutter Central to be a key component of the Company's **two-pronged strategy of exploration and development**, with organic growth from discoveries such as Bolt Cutter Central – located within trucking distance to the Tabbata Tabbata Project – providing a clear pathway for integration into broader development plans. This approach has the potential to **support the establishment of a major new lithium mining and processing operation** in WA's Pilbara.

Next Steps at Bolt Cutter Central:

- Begin initial metallurgical testwork on Bolt Cutter Central
- Explore the Bolt Cutter Central discovery at depth with diamond drilling
- Commence extensional and infill RC drilling of the footprint of the Bolt Cutter Central discovery
- Fly detailed magnetics and LiDAR to assist further exploration targeting on regional tenure
- Progress towards a maiden Mineral Resource estimate.

This announcement has been authorised by the Board of Directors of the Company.

– ENDS –

FOR FURTHER INFORMATION, PLEASE CONTACT

AJ Saverimutto
Managing Director

Tel: +61 (8) 6555 2950

info@wildcatresources.com.au

Matthew Banks
Executive Director

Tel: +61 (8) 6555 2950

info@wildcatresources.com.au

Nathan Ryan
NWR Communications

Tel: +61 420 582 887

nathan.ryan@nwrcommunications.com.au

About Tabbatabba

The Tabbatabba Project (**Project**) (Figure 3) is an advanced lithium and tantalum development project that is located on granted Mining Leases just 80km by road from Port Hedland, Western Australia. It is nearby some of the world's largest hard-rock lithium mines (47km by road from the 446Mt Pilgangoora Project¹ and 87km by road to the 259Mt Wodgina Project²).

The Project was one of four significant LCT pegmatite projects in WA, previously owned by Sons of Gwalia. The others were Greenbushes, Pilgangoora and Wodgina which are now Tier-1 hard-rock lithium mines. Tabbatabba is the last of these assets to be explored and developed for lithium mineralisation.

The Tabbatabba Project contains a maiden JORC (2012) Mineral Resource Estimate ("**MRE**") of 74.1Mt @ 1.0% Li₂O (Table 1)³, which includes a maiden JORC (2012) Probable Ore Reserve estimate of 46.3Mt @ 0.99 Li₂O (Table 3)⁴.

Table 1: Tabbatabba Lithium JORC (2012) MRE as at 28 November 2024 (using 0.45% Li₂O cut-off).

Category	Tonnes (Mt)	Li ₂ O (%)	Ta ₂ O ₅ (ppm)	Fe ₂ O ₃ (%)	Li ₂ O (T)	Ta ₂ O ₅ (lb)
Indicated	70.0	1.01	53	0.64	709,100	9,948,600
Inferred	4.1	0.76	65	0.88	31,100	724,700
Total	74.1	1.00	54	0.65	740,200	10,673,300

Notes:

-Reported above a Li₂O cut-off grade of 0.45%. Appropriate rounding applied.

Table 2: Tabbatabba Project Maiden Ore Reserve of 46.3Mt at 0.99%

Source	Classification	Tonnes (Mt)	Li ₂ O grade (%)	Ta ₂ O ₅ (ppm)	Fe ₂ O ₃ (%)	Li ₂ O (kt)
Open pit	Proved	-	-	-	-	-
	Probable	36.8	1.00	62.4	1.06	366
Underground	Proved	-	-	-	-	-
	Probable	9.5	0.94	51.9	0.86	90
Total	Probable	46.3	0.99	60.2	1.02	456

The Ore Reserve estimate (Table 3) is based on the November 2024 MRE (Table 2), but does not include the Chewy, Han or Hutt pegmatites, which collectively account for approximately 15% of the MRE. Work is ongoing however recent work has delineated viable processing methods⁵.

¹ Pilbara Minerals Ltd ASX announcement 11 June 2025: <https://1pls.irmav.com/site/pdf/5fb09df7-4e59-4c10-ab9e-69207cbc8620/Pilgangoora-Mineral-Resource-Update.pdf?Platform=ListPage>

² Mineral Resources Ltd ASX announcement 23 October 2018: <http://clients3.weblink.com.au/pdf/MIN/02037855.pdf>

³ Tabbatabba maiden resource <https://wcsecure.weblink.com.au/clients/wildcatresources/headline.aspx?headlineid=61240199>

⁴ Tabbatabba Pre-Feasibility announcement 29 July 2025: <https://wcsecure.weblink.com.au/clients/wildcatresources/headline.aspx?headlineid=61275222>

⁵ Tabbatabba Metallurgical Update announcement 21/10/2025 <https://cdn-api.markitdigital.com/apiman-gateway/ASX/asx-research/1.0/file/2924-03010774-6A1291502&v=undefined>

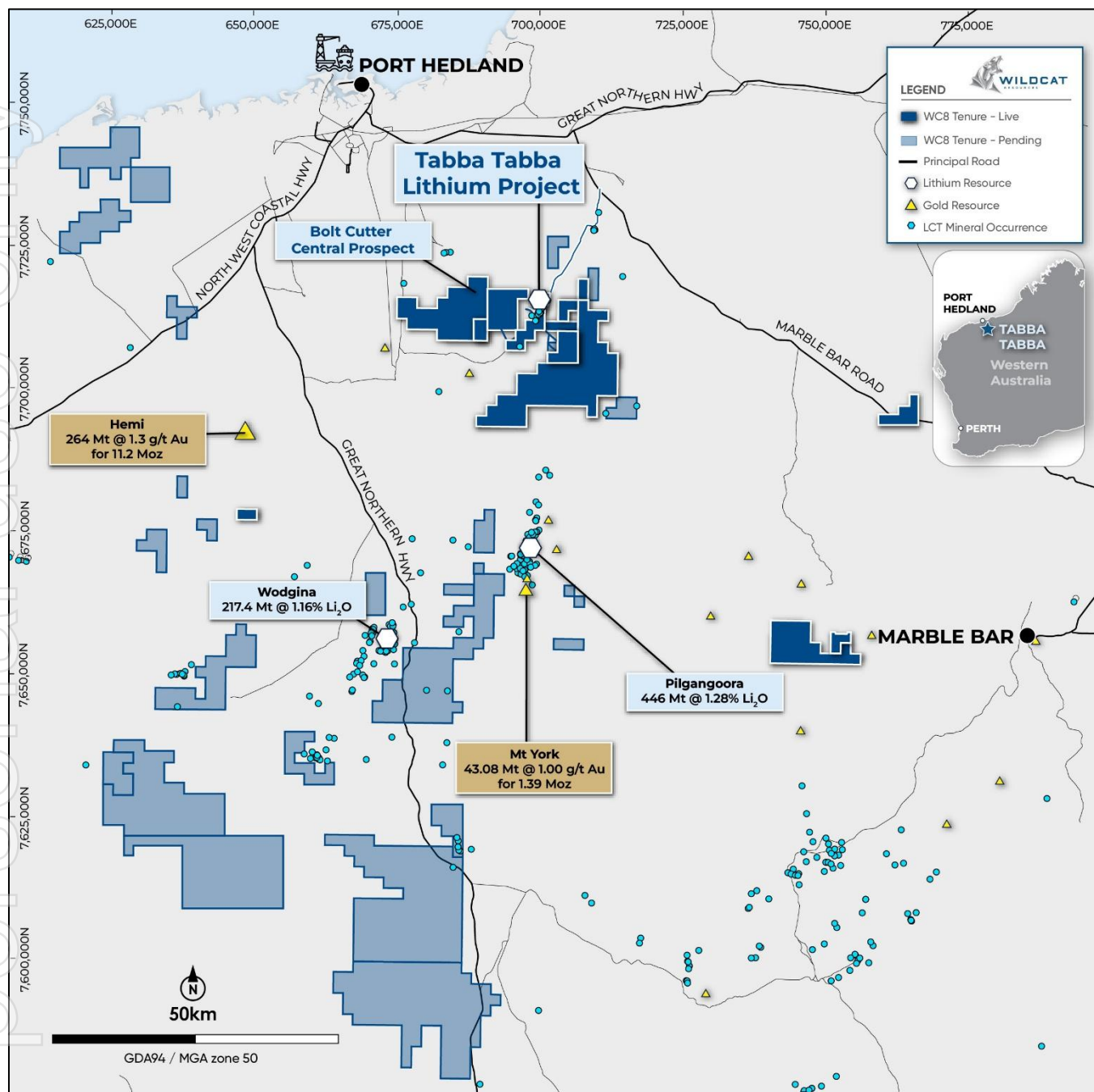


Figure 3: Location of the Tappa Tappa Project. Pending Miscellaneous Licences are not shown and tenement rights may vary.

About Bolt Cutter Central

The Bolt Cutter Central Lithium Project is located ~10km to the west of the Tabbababba Project (Figure 4). It is an early-stage greenfields exploration project with lithium mineralisation associated with swarms of lithium-caesium-tantalum (LCT) pegmatite dykes hosted in a granodiorite unit and remains open in most directions. Maiden reconnaissance RC drilling commenced in July 2025, leading to the discovery of the Harry and Hermione Pegmatite Swarms. The tenement package was bolstered by a tenement acquisition concluding in August 2025 in which Wildcat received full ownership and exploration rights to E45/5416, located only 2.3km from the Tabbababba Project and immediately adjacent to the new discovery. Exploration is ongoing to define further exploration targets and mineralised zones.

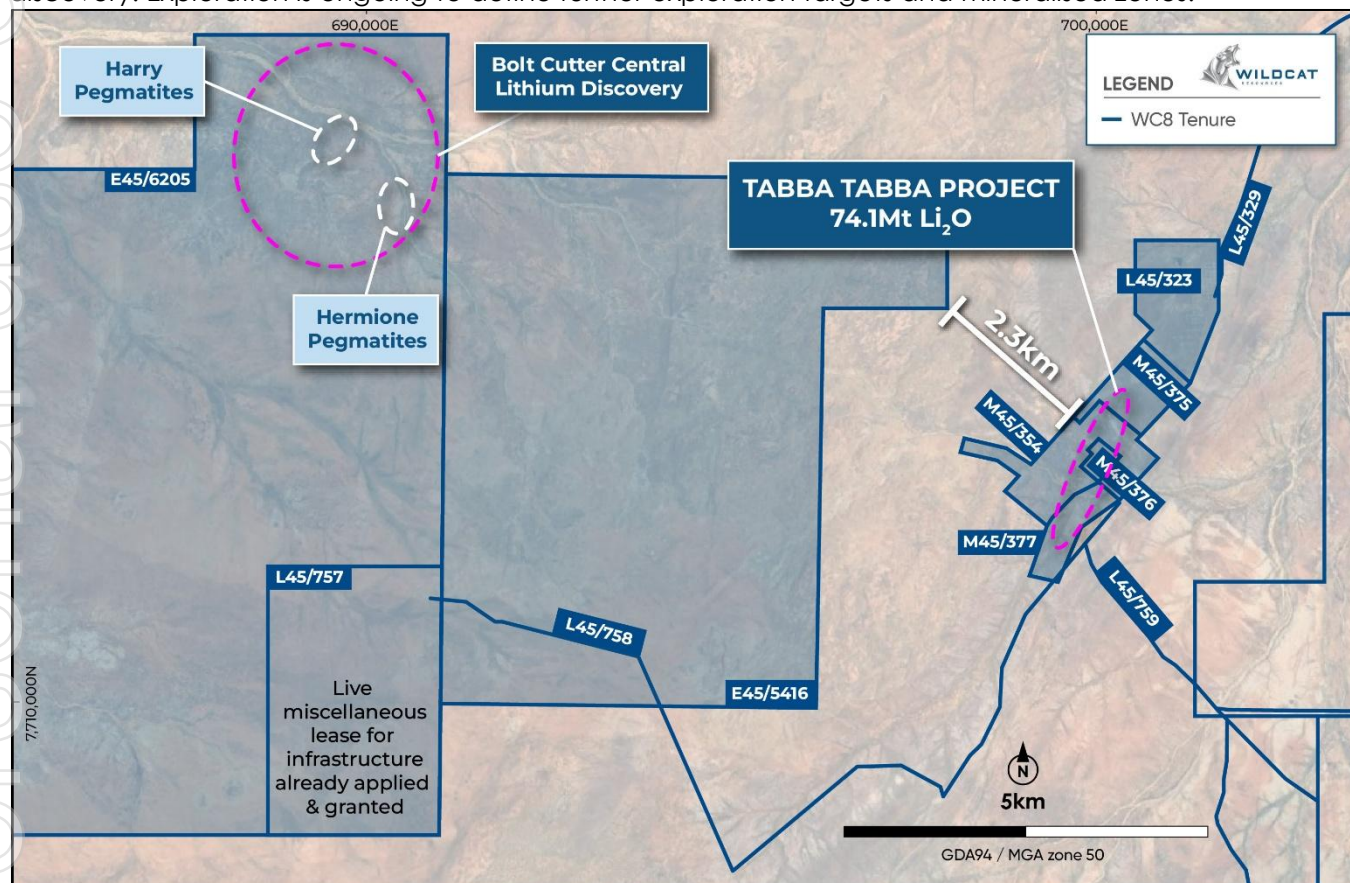


Figure 4: Location of the Bolt Cutter Central discovery relative to the Tabbababba Project, WA.

Some of the best intercepts from Bolt Cutter Central announced to date include:

- 20.0m @ 1.70% Li₂O from 43.0m (BCRC002) (12.0m est. true width)
- 12.8m @ 2.02% Li₂O from 45.3m (BCDD001) (est. true width)
- 12m @ 1.65% Li₂O from 90m (BCRC034) (est. true width)
- 12.0m @ 1.30% Li₂O from 39.0m (BCRC003) (est. true width)
- 14.0m @ 1.25% Li₂O from 40.0m (BCRC007) (est. true width)
- 12.9m @ 1.6% Li₂O from 86.9m (BCDD002) (7.6m est. true width)
- 11m @ 1.32% Li₂O from 54m (BCRC033) (est. true width),
- 9.0m @ 1.84% Li₂O from 128.0m (BCRC050) (est. true width)
- 9.0m @ 1.68% Li₂O from 102.0m (BCRC039) (est. true width)
- 10.0m @ 1.2% Li₂O from 3.0m (BCRC005) (est. true width)
- 5.0m @ 2.31% Li₂O from 6.0m (BCRC001) (est. true width)

Forward-Looking Statements

This document may include forward-looking statements. Forward-looking statements include, but are not limited to, statements concerning Wildcat Resources Limited's planned exploration programme and other statements that are not historical facts. When used in this document, the words such as "could," "plan," "estimate," "expect," "intend," "may", "potential," "should," and similar expressions are forward-looking statements. Although Wildcat Resources Limited believes that its expectations reflected in these forward-looking statements are reasonable, such statements involve risks and uncertainties, and no assurance can be given that actual results will be consistent with these forward-looking statements.

Competent Person's Statement

The information in this announcement that relates to Exploration Results for Tabbatabba Project is based on, and fairly represents, information compiled by Mr Torrin Rowe (Head of Geology and Exploration at Wildcat Resources Limited), a Competent Person who is a Member of the Australian Institute of Geoscientists (AIG). Mr Rowe is a fulltime employee and shareholder of Wildcat Resources Limited. Mr Rowe has sufficient experience that is relevant to the style of mineralisation and type of deposit under consideration, and to the activity being undertaken to qualify as a Competent Person as defined in the 2012 Edition of the Joint Ore Reserves Committee (JORC) Australasian Code for Reporting Exploration Results, Mineral Resources and Ore Reserves. Mr Rowe consents to the inclusion in this announcement of the matters based on his information in the form and context in which it appears.

No New Information or Data: *This document contains exploration results, historic exploration results and Mineral Resource Estimates as originally reported in fuller context in Wildcat Resources Limited ASX Announcements - as published on the Company's website. Wildcat confirms that it is not aware of any new information or data that materially affects the exploration results, metallurgical results and Mineral Resource Estimates information included in the relevant market announcements. Wildcat confirms that the form and context in which the Competent Persons' findings are presented have not been materially modified from those market announcements.*

Appendix 1

Table 3: Significant intercepts - Intercepts reported using geological interpretation to define appropriate intercept widths against geology and grade. Grades are rounded to two decimal places. NSI stands for *No Significant Intercept* returned. Intercepts are reported with a minimum cutoff grade of 0.3% Li₂O and no more than 2m of internal waste (waste is defined as 'not pegmatite' and/or below cutoff grade).

Hole ID	From (m)	To (m)	Intercept Length (m)	Est True Width (m)	Grade (Li ₂ O%)	Prospect
BCRC057	NSI					
BCRC058	56	57	1		1	Bolt Cutter Central
and:	65	73	8		0.75	Bolt Cutter Central
and:	80	86	6		0.99	Bolt Cutter Central
and:	145	152	7		0.91	Bolt Cutter Central
BCRC059	88	94	6		0.64	Bolt Cutter Central
and:	100	104	4		0.33	Bolt Cutter Central
BCRC060	91	93	2		0.48	Bolt Cutter Central
and:	127	136	9		0.48	Bolt Cutter Central
and:	146	148	2		0.37	Bolt Cutter Central
BCRC061	NSI					
BCRC062	15	16	1		0.35	Bolt Cutter Central
and:	34	37	3		0.37	Bolt Cutter Central
and:	116	118	2		1.25	Bolt Cutter Central
and:	164	168	4		1.02	Bolt Cutter Central
BCRC063	NSI					
BCRC064	144	150	6		0.77	Bolt Cutter Central
BCRC065	88	92	4		0.46	Bolt Cutter Central
and:	105	106	1		1.29	Bolt Cutter Central
BCRC066	29	32	3		0.92	Bolt Cutter Central
BCRC067	31	36	5		0.41	Bolt Cutter Central
and:	39	51	12		0.78	Bolt Cutter Central
BCRC068	NSI					

Hole ID	From (m)	To (m)	Intercept Length (m)	Est True Width (m)	Grade (Li2O%)	Prospect
BCRC069	98	99	1		0.37	Bolt Cutter Central
BCRC070	75	80	5		0.97	Bolt Cutter Central

Table 4: Drill hole collar table – MGA2020 Zone 50 – Only includes new collars or collars with changing assay status.

Hole ID	Hole Type	MGA Easting (m)	MGA Northing (m)	RL (mASL)	Total Depth	Azimuth	Dip	Assay Status	Prospect	Comments
BCRC057	RC	690030	7717336	79	132	118	-81	Received	Bolt Cutter Central	Complete
BCRC058	RC	689900	7717412	78	156	121	-80	Received	Bolt Cutter Central	Complete
BCRC059	RC	689976	7717542	78	132	120	-80	Received	Bolt Cutter Central	Complete
BCRC060	RC	689849	7717619	77	180	120	-80	Received	Bolt Cutter Central	Complete
BCRC061	RC	689921	7717745	76	138	120	-80	Received	Bolt Cutter Central	Complete
BCRC062	RC	689790	7717822	76	204	120	-80	Received	Bolt Cutter Central	Complete
BCRC063	RC	689918	7718039	76	208	120	-80	Received	Bolt Cutter Central	Complete
BCRC064	RC	689196	7717992	75	174	117	-83	Received	Bolt Cutter Central	Complete
BCRC065	RC	689253	7717789	77	228	116	-80	Received	Bolt Cutter Central	Complete
BCRC066	RC	689124	7717862	76	180	118	-80	Received	Bolt Cutter Central	Complete
BCRC067	RC	690047	7717158	78	270	118	-81	Received	Bolt Cutter Central	Complete
BCRC068	RC	690176	7717078	79	222	120	-80	Received	Bolt Cutter Central	Complete
BCRC069	RC	690307	7716995	80	174	120	-80	Received	Bolt Cutter Central	Complete
BCRC070	RC	689602	7716894	76	186	120	-81	Received	Bolt Cutter Central	Complete

Appendix 2

JORC Code, 2012 Edition – Table 1

Section 1 Sampling Techniques and Data

(Criteria in this section apply to all succeeding sections.)

Criteria	Criteria	Commentary
Sampling techniques	<ul style="list-style-type: none"> Nature and quality of sampling (e.g. cut channels, random chips, or specific specialized industry standard measurement tools appropriate to the minerals under investigation, such as down hole gamma sondes, or handheld XRF instruments, etc). These examples should not be taken as limiting the broad meaning of sampling. Include reference to measures taken to ensure sample representivity and the appropriate calibration of any measurement tools or systems used. Aspects of the determination of mineralisation that are Material to the Public Report. In cases where 'industry standard' work has been done this would be relatively simple (e.g. 'reverse circulation drilling was used to obtain 1 m samples from which 3 kg was pulverised to produce a 30 g charge for fire assay'). In other cases more explanation may be required, such as where there is coarse gold that has inherent sampling problems. Unusual commodities or mineralisation types (e.g. submarine nodules) may warrant disclosure of detailed information. 	<ul style="list-style-type: none"> Reverse circulation and diamond drilling completed by Hagstrom Drilling. All RC drilling samples were collected as 1m composites, targeted 3-5kg sub-sample was collected for every 1m interval using a static cone splitter with the sub-sample placed into calico sample bags and the bulk reject placed in rows on the ground. Diamond core samples were collected in plastic core trays, sequence checked, metre marked and oriented using the base of core orientation line. It was then cut longitudinally down the core axis (parallel to the orientation line where possible) and half the core sampled into calico bags using a minimum interval of 30cm and a maximum interval of 1m. Pegmatite intervals were assessed visually for LCT mineralisation by the rig geologist assisted by tools such as ultraviolet light and LIBS analyser. All samples with pegmatite and adjacent wall rock samples were sent to ALS laboratories in Perth for chemical analysis. The entire 3kg sub-sample was pulverised in a chrome steel bowl which was split and an aliquot obtained for a 50gm charge assay. LCT mineralisation was assessed using the MS91-PKG package which uses sodium peroxide fusion followed by dissolution and analysis with ICP-AES and ICP-MS. Additional multielement analyses (48-element suite) using 4-Acid digest ICP-MS were requested at the rig geologist's discretion to aid geological interpretation.
Drilling techniques	<ul style="list-style-type: none"> Drill type (e.g. core, reverse circulation, open-hole hammer, rotary air blast, auger, Bangka, sonic, etc) and details (e.g. core diameter, triple or standard tube, depth of diamond tails, face-sampling bit or other type, whether core is oriented and if so, by what method, etc). 	<ul style="list-style-type: none"> Reverse circulation with orientation surveys taken every 30m and an end of hole orientation using an Imdex gyro tool. A continuous survey in and out of hole was completed at drillhole completion. Diamond drilling used HQ and NQ bits depending on ground conditions and hole depth.
Drill sample recovery	<ul style="list-style-type: none"> Method of recording and assessing core and chip sample recoveries and results assessed. Measures taken to maximise sample recovery and ensure representative nature of the samples. 	<ul style="list-style-type: none"> RC sample recovery (poor/good) and moisture content (dry/wet) was recorded by the rig geologist in metre intervals based on visual estimation. The static cone splitter (Ox Engineering drill sampling system) on the RC rig was regularly checked by the rig geologist as part of QA/QC procedures. Sub-sample weights were measured and recorded by the laboratory. No analysis of sample recovery versus grade has been made at this time.

Criteria	Criteria	Commentary
	<ul style="list-style-type: none"> Whether a relationship exists between sample recovery and grade and whether sample bias may have occurred due to preferential loss/gain of fine/coarse material. 	<ul style="list-style-type: none"> Diamond drilling is orientated, meter marked, RQD measured and density data is taken and samples are recorded based on geological parameters. Core recovery is calculated based on core block depths and physical measurements.
Logging	<ul style="list-style-type: none"> Whether core and chip samples have been geologically and geotechnically logged to a level of detail to support appropriate Mineral Resource estimation, mining studies and metallurgical studies. Whether logging is qualitative or quantitative in nature. Core (or costean, channel, etc) photography. The total length and percentage of the relevant intersections logged. 	<ul style="list-style-type: none"> All RC samples were qualitatively logged by the rig geologist for lithology, alteration, mineralisation, structure, weathering and more. Data was then captured by Ocris and imported into a database. Pegmatite intervals were assessed visually for lithium mineralisation by the rig geologist assisted by tools such as ultraviolet light and a LIBS analyser. All chip trays were photographed in natural light and compiled using Sequent Ltd's Imago solution. UV photography studies are ongoing. Spodumene percentage estimates are interpreted by trained geologists with experience in spodumene deposits. Geologists use a combination of LIBS analyser, UV fluorescence and other geological logging tools (mineral cleavage, experience etc.) to log this mineral abundance. However, visual estimates of mineralogy or material abundance should never be considered a proxy or substitute for laboratory analysis. Laboratory assay results are required to determine the widths, mineralogy, and grade of the visible mineralisation reported.
Sub-sampling techniques and sample preparation	<ul style="list-style-type: none"> If core, whether cut or sawn and whether quarter, half or all core taken. If non-core, whether riffled, tube sampled, rotary split, etc and whether sampled wet or dry. For all sample types, the nature, quality and appropriateness of the sample preparation technique. Quality control procedures adopted for all sub-sampling stages to maximise representivity of samples. Measures taken to ensure that the sampling is representative of the in-situ material collected, including for instance results for field duplicate/second-half sampling. Whether sample sizes are appropriate to the grain size of the material being sampled. 	<ul style="list-style-type: none"> 3kg to 5kg sub-samples of RC chips were collected from the rig-mounted static cone splitter into uniquely numbered calico bags for each 1m interval. Diamond core is drilled with HQ or NQ diameter and is cut longitudinally down the core axis (along the orientation line where possible) with an Almonte core saw and half core samples between 30cm and 1m in length are sampled and collected in numbered calico bags. Duplicates, blanks and standards inserted at the same rate as for the RC samples. Sample sizes are appropriate to the crystal size of the material being sampled with a targeted 85% passing 75 µm. Sub-sample preparation was by ALS laboratories using industry standard and appropriate preparation techniques for the assay methods in use. Internal laboratory standards were used, and certified OREAS standards and certified blank material were inserted into the sample stream at regular intervals by the rig geologist. Duplicates were obtained from using a duplicate outlet direct from the cyclone in the RC and a lab split in the DD at the site geologist's discretion in zones containing visual indications of mineralised pegmatite.
Quality of assay data	<ul style="list-style-type: none"> The nature, quality and appropriateness of the assaying and laboratory procedures used and whether the technique is considered partial or total. 	<ul style="list-style-type: none"> The RC samples were analysed with MS91-PKG at ALS using sodium peroxide fusion ICP-AES/MS for an LCT suite, fire assay for gold, and 4-acid digest ICP-AES and ICP-MS for multi-element analysis.

Criteria	Criteria	Commentary
and laboratory tests	<ul style="list-style-type: none"> For geophysical tools, spectrometers, handheld XRF instruments, etc, the parameters used in determining the analysis including instrument make and model, reading times, calibrations factors applied and their derivation, etc. Nature of quality control procedures adopted (e.g. standards, blanks, duplicates, external laboratory checks) and whether acceptable levels of accuracy (i.e. lack of bias) and precision have been established. 	<ul style="list-style-type: none"> Appropriate OREAS standards were inserted at regular intervals. Blanks were inserted at regular intervals during sampling. Certified reference material standards of varying lithium grades have been used at a rate not less than 1 per 25 samples. Check sampling via an umpire lab has not yet been completed.
Verification of sampling and assaying	<ul style="list-style-type: none"> The verification of significant intersections by either independent or alternative company personnel. The use of twinned holes. Documentation of primary data, data entry procedures, data verification, data storage (physical and electronic) protocols. Discuss any adjustment to assay data. 	<ul style="list-style-type: none"> No independent verification of significant intersections has been made. Significant intersections were produced by an automated export from the database managers and checked by a Senior Geologist/Exploration Manager and the Geology Manager. Twinned holes of RC to DD have been drilled to allow correlation of assay results between drilling styles to provide more confidence in the model. Industry standard procedures guiding data collection, collation, verification, and storage were followed. No adjustment has been made to assay data as reported by the laboratory other than calculation of Li₂O% from Li ppm using a 2.153 conversion factor.
Location of data points	<ul style="list-style-type: none"> Accuracy and quality of surveys used to locate drill holes (collar and down-hole surveys), trenches, mine workings and other locations used in Mineral Resource estimation. Specification of the grid system used. Quality and adequacy of topographic control. 	<ul style="list-style-type: none"> Location of drill holes were recorded by tablet GPS. Locational accuracy is +-1m in the XY and +-5m in the Z orientation. Survey priority is then replaced with a differential GPS (DGPS) on a campaign basis, by Wildcat staff with a company owned DGPS. All current data is in MGA2020 (Zone 50). Topological control is via GPS and DEM calculated from a drone photographic survey. The LiDAR has generated a topographic surface accurate to <20cm. Downhole surveys collected using an Imdex Gyro tool
Data spacing and distribution	<ul style="list-style-type: none"> Data spacing for reporting of Exploration Results. Whether the data spacing and distribution is sufficient to establish the degree of geological and grade continuity appropriate for the Mineral Resource and Ore Reserve estimation procedure(s) and classifications applied. Whether sample compositing has been applied. 	<ul style="list-style-type: none"> Drill hole spacing varies from 50m to ~600m apart with varying levels of infill. No sample compositing has been applied.
Orientation of data in relation to geological structure	<ul style="list-style-type: none"> Whether the orientation of sampling achieves unbiased sampling of possible structures and the extent to which this is known, considering the deposit type. If the relationship between the drilling orientation and the orientation of key mineralised structures is considered to have introduced a sampling bias, this should be assessed and reported if material. 	<ul style="list-style-type: none"> No fabric orientation data has been obtained from the RC holes. True width has been estimated from a 3D geological model built using Leapfrog software and holes are designed to intercept at true width. True width has not been estimated for pegmatites of unknown geometry (early discoveries) and instead downhole widths are provided. The drilling orientation and intersection angles are deemed appropriate.

Criteria	Criteria	Commentary
Sample security	<ul style="list-style-type: none">The measures taken to ensure sample security.	<ul style="list-style-type: none">All samples were packaged into bulka bags and strapped securely to pallets and delivered by Wildcat staff to freight depots in Port Hedland. The samples were transported from Port Hedland to Perth ALS laboratories via Toll or Centurian freight contractors. Any umpire assays were transported as pulps or coarse rejects by ALS to Intertek (genalysis).
Audits or reviews	<ul style="list-style-type: none">The results of any audits or reviews of sampling techniques and data.	<ul style="list-style-type: none">Several internal audits have been completed by the Company's technical team as part of ongoing data validation. These include SQL queries, field validation, general data integration and photo analysis. No major errors have been identified.

Section 2 Reporting of Exploration Results

(Criteria listed in the preceding section also apply to this section.)

Criteria	JORC Code explanation	Commentary
Mineral tenement and land tenure status	<ul style="list-style-type: none"> Type, reference name/number, location and ownership including agreements or material issues with third parties such as joint ventures, partnerships, overriding royalties, native title interests, historical sites, wilderness or national park and environmental settings. The security of the tenure held at the time of reporting along with any known impediments to obtaining a licence to operate in the area. 	<ul style="list-style-type: none"> Wildcat Resources Limited Ltd owns 100% of the Tabbatabba Project Mining Leases (M45/354; M45/375; M45/376 and M45/377) and E45/6205 (Bolt Cutter Central). Royalties and material issues are set out in an agreement between Wildcat and GAM for Wildcat to acquire the Tabbatabba Project as announced on 17th May 2023: https://www.investi.com.au/api/announcements/wc8/4788276b-630.pdf Wildcat own LCT rights only to E45/6205 Wildcat owns all non-LCT rights to E45/2364 No known impediments.
Exploration done by other parties	<ul style="list-style-type: none"> Acknowledgment and appraisal of exploration by other parties. 	<p><u>At Tabbatabba</u></p> <ul style="list-style-type: none"> Goldrim Mining Ltd and Pancontinental Mining Ltd ("PanCon") completed 24 OHP, 59 RC and 3 DD holes between 1984 and 1991. GAM drilling of 29 RC holes in 2013. Pilbara Minerals Ltd (PLS) completed 5 diamond holes in November 2013. Historic drilling targeted tantalum mineralisation. Drilling into the vast majority of the lithium resources has been completed by Wildcat since mid-2023. <p><u>At Bolt Cutter Central</u></p> <ul style="list-style-type: none"> Bolt Cutter Central had not seen any meaningful exploration.
Geology	<ul style="list-style-type: none"> Deposit type, geological setting and style of mineralisation. 	<ul style="list-style-type: none"> The Bolt Cutter Central pegmatites are interpreted to be forming a NW trending swarm dipping shallowly (30°) to the west. They are hosted by a granodiorite unit They appear to average ~2-5m in width and are stacked in semi-consistent intervals While geological observations should not replace detailed lab analysis for definitive mineralogy, geologists have interpreted spodumene within the pegmatites at Bolt Cutter Central and XRD has confirmed the presence of both spodumene and petalite
Drill hole information	<ul style="list-style-type: none"> A summary of all information material to the understanding of the exploration results including a tabulation of the following information for all Material drill holes: <ul style="list-style-type: none"> easting and northing of the drill hole collar elevation or RL (Reduced Level - elevation above sea level in metres) of the drill hole collar dip and azimuth of the hole 	<ul style="list-style-type: none"> Refer to tables in the report and notes attached thereto which provide all relevant details. Previous company announcements available here: https://www.asx.com.au/markets/trade-our-cash-market/announcements.wc8

Criteria	JORC Code explanation	Commentary
	<ul style="list-style-type: none"> - down hole length and interception depth - hole length. • If the exclusion of this information is justified on the basis that the information is not Material and this exclusion does not detract from the understanding of the report, the Competent Person should clearly explain why this is the case. 	
Data aggregation methods	<ul style="list-style-type: none"> • In reporting Exploration Results, weighting averaging techniques, maximum and/or minimum grade truncations (e.g. cutting of high grades) and cut-off grades are usually Material and should be stated. • Where aggregate intercepts incorporate short lengths of high-grade results and longer lengths of low-grade results, the procedure used for such aggregation should be stated and some typical examples of such aggregations should be shown in detail. • The assumptions used for any reporting of metal equivalent values should be clearly stated. 	<p>At Tabba Tabba – intercept calculations reflect the large, thick pegmatite style:</p> <ul style="list-style-type: none"> • No top cut off has been used. Aggregated pegmatite intercepts calculated at a 0.1% Li₂O cutoff grade with a maximum of 10m consecutive internal dilution and reporting overall intercepts with a weighted average grade >0.5%. All smaller significant intercepts and the high-grade intervals included within broader aggregated intercepts have been separately reported and calculated using the most practical of a geologically interpreted subdomain or a 0.3% Li₂O cut off and a maximum of 3m of internal dilution. • An iron cutoff of >5% Fe has also been applied to each sample in order to exclude peripheral intervals that contain significant wall rock contamination or external intervals that are not pegmatite hosted Li₂O intercepts. Smaller intervals of internal mafic <10m are classified as waste and may still be included in intercept calculations. Minor discrepancies between pegmatite thickness and mineralised intercepts may arise due to mixed intervals of pegmatite and host rock, i.e. in RC drilling where a 1m interval may constitute mixed pegmatite and mafic wall rock. This may mean that the true boundary of the pegmatite may be slightly wider or smaller than what is reflected in the reported mineralized intercept. • No metal equivalents have been used. <p>At Bolt Cutter Central – Intercept calculations reflect thinner/high grade pegmatite style:</p> <ul style="list-style-type: none"> • Intercepts are reported with a minimum cutoff grade of 0.3% Li₂O and no more than 2m of internal waste (waste is defined as 'not pegmatite' and/or below cutoff grade)
Relationship between mineralization widths and intercept lengths	<ul style="list-style-type: none"> • These relationships are particularly important in the reporting of Exploration Results. • If the geometry of the mineralisation with respect to the drill hole angle is known, its nature should be reported. • If it is not known and only the down hole lengths are reported, there should be a clear statement to this effect (e.g. 'down hole length, true width not known'). 	<ul style="list-style-type: none"> • Most pegmatite intervals intercepted have returned assay results >0.3% Li₂O, some are mineralised in totality, others are partially mineralised with localised zones of lithium mineralisation below 0.3%Li₂O. This is expected in fractionated, zoned pegmatite systems. Some zones have mineralisation that averages below 0.1% Li₂O. • Holes are planned to intersect perpendicular to modelled mineralisation. Where surface conditions have not allowed optimal collar placement estimated true widths have been calculated and reported. • Cross sections illustrate the modelled pegmatite domains and intersections.

Criteria	JORC Code explanation	Commentary
Diagrams	<ul style="list-style-type: none"> Appropriate maps and sections (with scales) and tabulations of intercepts should be included for any significant discovery being reported. These should include, but not be limited to, a plan view of drill hole collar locations and appropriate sectional views. 	<ul style="list-style-type: none"> See this announcement for appropriate maps and related figures. Where “mineralisation” shapes have been drawn to interpret discovery footprints, at least 1 interval in the drillhole must be $>0.5\%$ Li_2O to support the interpretation.
Balanced reporting	<ul style="list-style-type: none"> Where comprehensive reporting of all Exploration Results is not practicable, representative reporting of both low and high grades and/or widths should be practiced to avoid misleading reporting of Exploration Results. 	<ul style="list-style-type: none"> For Tabbatabba, comprehensive reporting of all drill hole details have been previously reported in announcements since the acquisition by Wildcat in 2023. For Bolt Cutter Central, the only drillholes the company is aware of are those released in Wildcat ASX announcements. A summary of unannounced results for drillholes and their corresponding drillhole details has been included in this announcement (see appropriate tables).
Other substantive exploration data	<ul style="list-style-type: none"> Other exploration data, if meaningful and material, should be reported including (but not limited to): geological observations; geophysical survey results; geochemical survey results; bulk samples - size and method of treatment; metallurgical test results; bulk density, groundwater, geotechnical and rock characteristics; potential deleterious or contaminating substances. 	<ul style="list-style-type: none"> Everything meaningful and material is disclosed in the body of the report, has been previously announced or is ongoing/incomplete. Geological observations have been factored into the modelling and estimation work.
Further work	<ul style="list-style-type: none"> The nature and scale of planned further work (e.g. tests for lateral extensions or depth extensions or large-scale step-out drilling). Diagrams clearly highlighting the areas of possible extensions, including the main geological interpretations and future drilling areas, provided this information is not commercially sensitive. 	<ul style="list-style-type: none"> Further drilling plans aim to extend the modelled pegmatites and increase the confidence of these zones (e.g. to Exploration Targets and Mineral Resources) and exploration drilling will target potential repeating pegmatites at depth. Further work at Bolt Cutter Central will also include detailed mineralogy work to accurately and transparently report on the nature of the lithium mineralisation.