

ASX Announcement 21 January 2026

High-Grade Gold Confirmed at Woodpecker, Whistler and Niagara West

Highlights

- **Maiden RC drilling program successfully identifies new mineralised systems** at Woodpecker, Whistler and Niagara West within the Leonora South Gold Project.
- **Encouraging shallow, high-grade gold intercepts returned** from first-pass drilling include:
 - **3m at 4.89 g/t Au** from 36m in hole NIC057 at Woodpecker
 - **3m at 1.23 g/t Au** from 12m in hole NIC061 at Whistler
 - **3m @ 2.05g/t Au** from 6m in hole NIC090 at Euroa
 - **3m @ 4.91g/t Au** from 12m in hole NIC091 at Euroa
- **Whistler had never been drill tested prior to this program**, and other prospects had limited historical work.
- **Results provide a strong indicator of potentially unrecognised, significant gold mineralisation** within Leonora South project.
- **A major RC drilling program** is scheduled to commence in the coming months to follow up on these targets.

GoldArc Resources Limited (ASX:GA8) ('GoldArc' or 'the Company') is pleased to announce encouraging results from its recently completed Reverse Circulation (RC) drilling program at the Leonora South Gold Project. The program was designed to test historical workings and high priority geological targets at Woodpecker, Whistler (E40/415), and Niagara West (M40/26) prospects.

GoldArc Resources Managing Director, Paul Stephen commented: "These results provide a strong validation of our exploration model at Leonora South. To see high-grade mineralisation in 3m composites, such as 4.89 g/t Au and 4.91 g/t Au in our first-pass, shallow drilling campaign is an excellent outcome. Particularly exciting in the Whistler prospect, which had never been drilled before. We have barely scratched the surface of these mineralised systems, and we are eager to commence our next RC campaign to further unlock the potential of this project."

ASX:GA8

GoldArc Resources

goldarcres.com.au

104 Colin Street
West Perth WA 6005

+618 9420 8208





For personal use only
GoldArc

For personal use only

ASX:GA8

GoldArc Resources

goldarcres.com.au

104 Colin Street
West Perth WA 6005

+61 8 9420 8208



Drilling Program Overview

The RC drilling program comprised 37 holes for a total of 1,823m. The program was designed to test historical gold workings that have had none to very little previous historical drilling.

The main objective was to locate mineralisation that could be followed up with a substantial program to add additional ounces to GoldArc's resources. The drilling has intercepted many anomalies and ore grade gold mineralisation. It provided dip of mineralised zones, geological, and weathering information that will be useful in follow up drilling programs.

See Appendix 1 for further information and a list of significant intercepts. The significant 3m composites have been resampled and results are expected at the end of February 2026.

Woodpecker Prospect

Drilling at Woodpecker was designed to test extensions of historical mineralisation. RC Drillholes; NIC057 and NIC058 were drilled behind historical aircore hole KYA17092 that intercepted 3m @ 3.30g/t Au from 23m¹ (see Figure 2). NIC057 intersected 3m @ 4.89g/t Au from 36m, NIC058 intersected 0.07g/t Au from 54m.

The mineralised zone is interpreted to be dipping 45° to the east and associated with minor quartz veining near the mafic and granitic lithological contact. The top of the fresh rock displays 45° dip parallel to interpreted mineral zone.

Historical aircore hole KYA17091 (40m to the south), intercepted 1m @ 0.16g/t Au from 25m¹. KYA17093 and 94 (40m and 60m to the north) did not intercept significant gold¹ and it is the belief of the Company that this is because they were drilled too short (see Figure 1).

The mineralisation intercepted in KYA17092 and NIC057 in addition to the gold anomalism uncovered in recent soil sampling² warrants follow up drilling at Woodpecker.

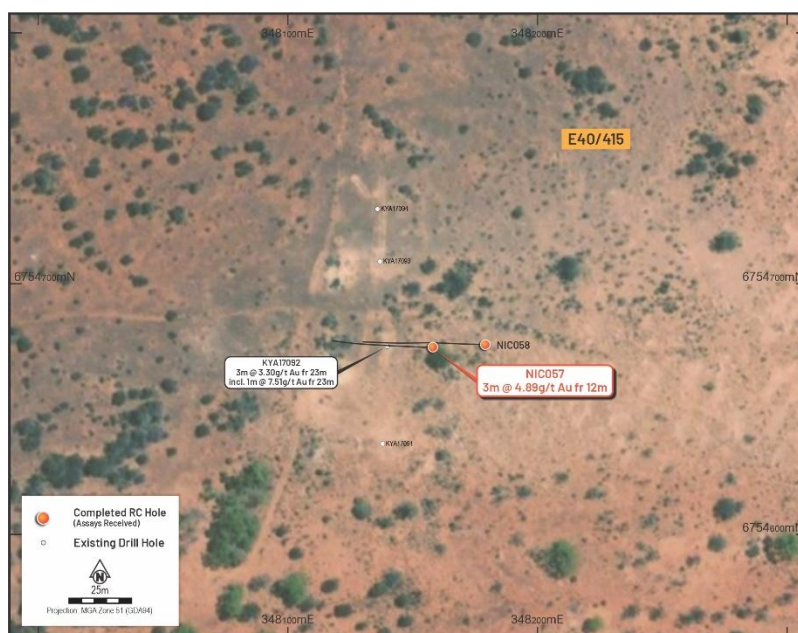


Figure 1 – Plan View of Drilling at Woodpecker

¹ Please see WAMEX Report A117572 dated 31 August 2018 (<https://wamex.dmp.wa.gov.au/Wamex>)

² Please see GA8 Announcement "High Priority Targets Identified at Jessop Creek & Whistler", released 1 December 2025

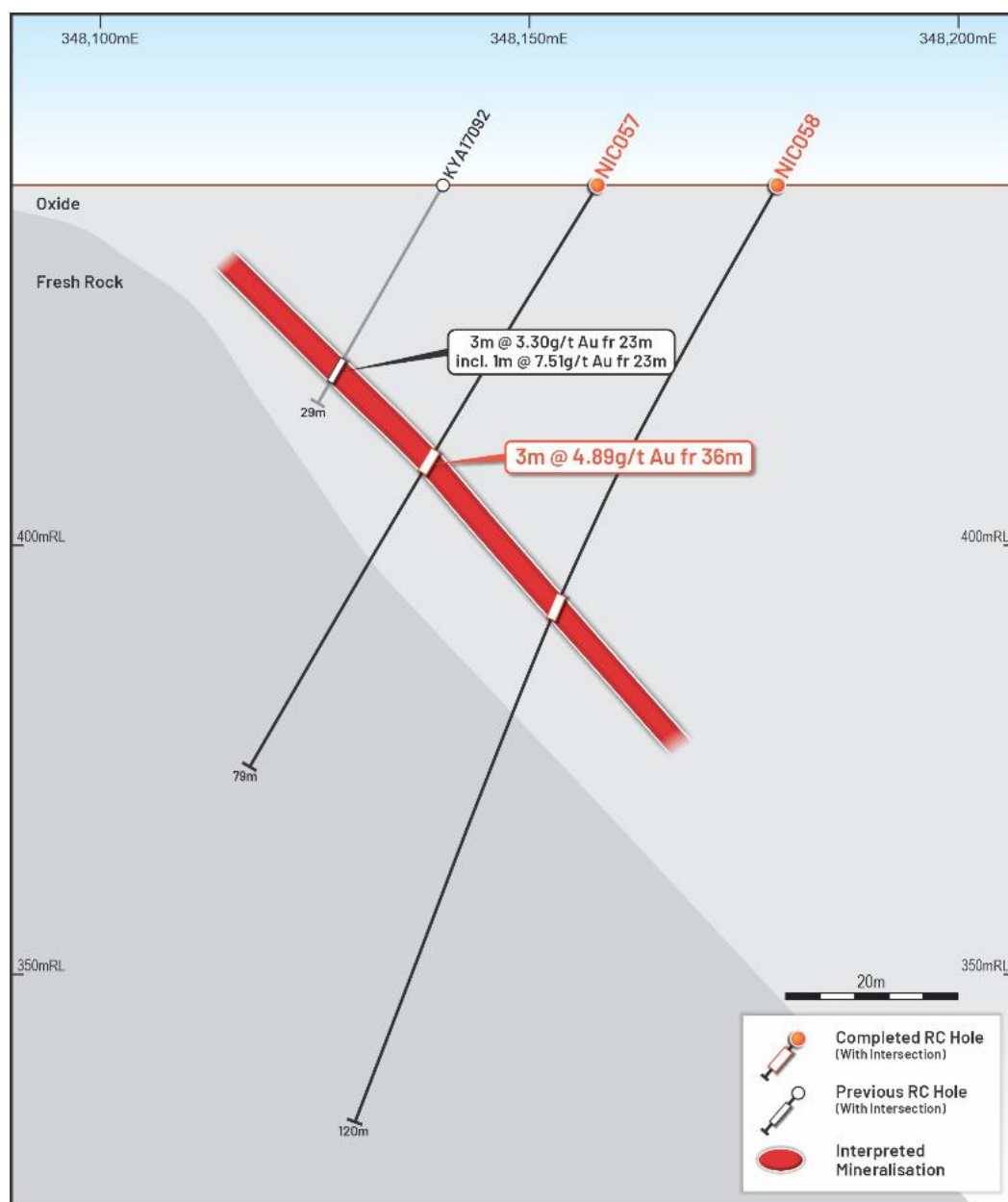


Figure 2 – Woodpecker Cross Section showing Interpreted Mineralised zone³

ASX:GA8

GoldArc Resources

goldarcres.com.au

104 Colin Street
West Perth WA 6005

+618 9420 8208

³ Please see WAMEX Report A117572 dated 31 August 2018 (<https://wamex.dmp.wa.gov.au/Wamex>)

ASX:GA8

GoldArc Resources

goldarcres.com.au

104 Colin Street
West Perth WA 6005

+618 9420 8208



Whistler

The Whistler prospect is composed of a 2.4km line of small historical gold shafts trending 020° in the central part of the E40/415. These run parallel to the historical McTavish line of workings located about 1.2km to the east on tenements held by Arika Resources. Prior to this program, this area had never been ever drilled tested.

Six RC drillholes were completed along three lines spaced 60m apart (see Figure 3). NIC061 returned 3m @ 1.23g/t Au from 12m. The mineralisation was coincident with quartz veining within mafic lithologies near the granite contact. NIC064 intersected a wide zone of low-grade gold including 15m @ 0.215g/t Au from 9m, all within granite lithology. NIC063 intercepted 3m @ 0.188g/t Au from 12m whilst NIC062 intersected minor quartz veining and weakly anomalous gold. Cross sections showing relevant intercepts are shown in Figures 4 and 5.

These results are encouraging for a first pass program and confirm the presence of a mineralised system requiring follow up.

See Appendix 1 for further information and a list of significant intercepts.

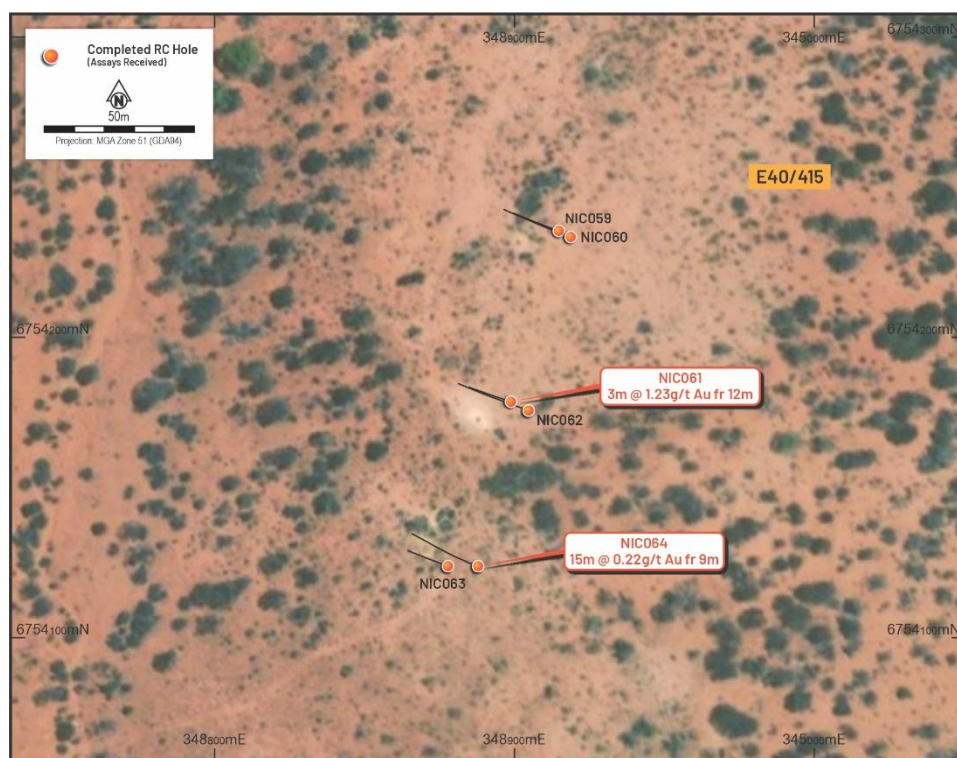


Figure 3 – Plan View of Drilling at Whistler

ASX:GA8

GoldArc Resources

goldarcres.com.au

104 Colin Street
West Perth WA 6005

+61 8 9420 8208

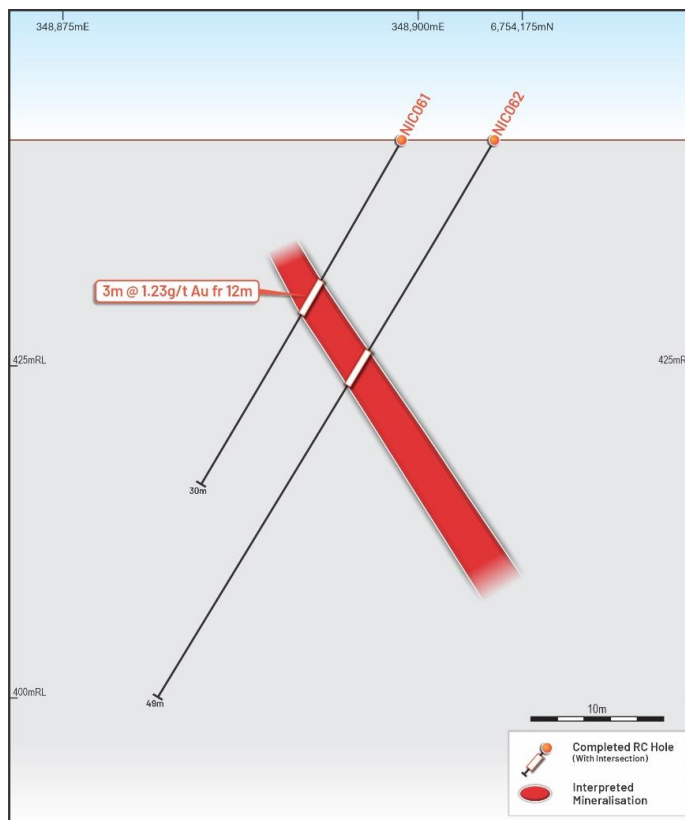


Figure 4 – Cross Section at Whistler (NIC061 and 62)

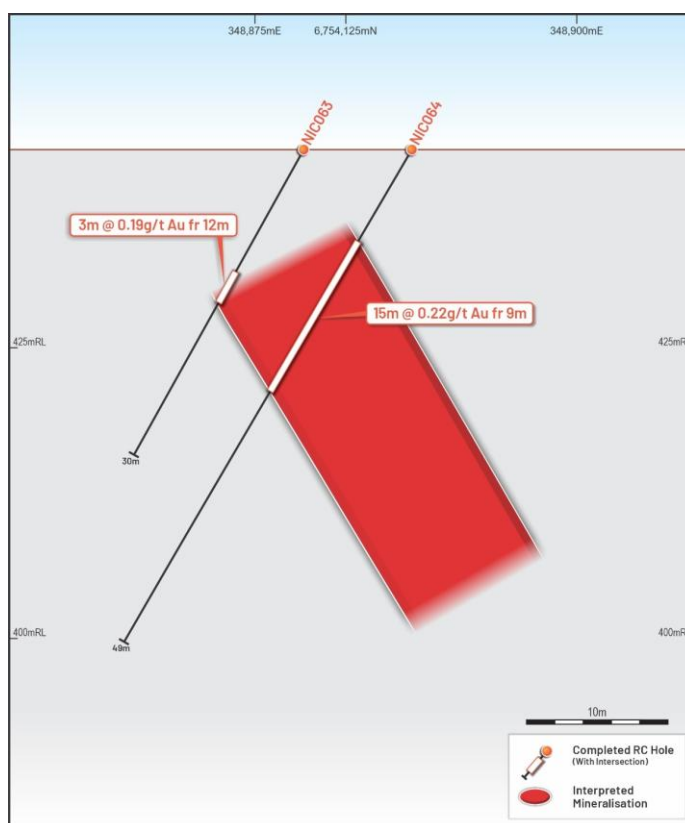


Figure 5 – Cross Section at Whistler (NIC063 and 64)

Niagara West

Twenty-nine RC holes (NIC065 – NIC093) were drilled to test a 2km long line of extensive workings within Niagara West tenement (M40/26) covering the Pirie, La Trobe, La Trobe East and Euroa prospect areas (see Figure 6). Drill lines were spaced between 80m and 180m apart in an area that previously had only handful of sporadic historical drillholes.

Almost every hole intercepted significant amount of quartz veining within mainly mafic lithologies with minor felsic dykes. Quartz veining varied in dip from steep (80°) to shallow (40°) to the south.

While numerous holes intercepted significant gold, the most outstanding results came from the Euroa area, NIC090 returned 3m @ 2.05g/t Au from 6m and step-back hole NIC091 returned 3m @ 4.91g/t Au from 12m (see Figure 7).

Pirie returned the following adjoining intersection, NIC070 returning 6m @ 0.2 g/t Au from 24m and NIC069 returning 6m @ 0.19g/t Au from 15m (see Figure 8).

These encouraging results support the need for further infill and deeper drilling along the 2km strike.

See Appendix 1 for further information and a list of significant intercepts.

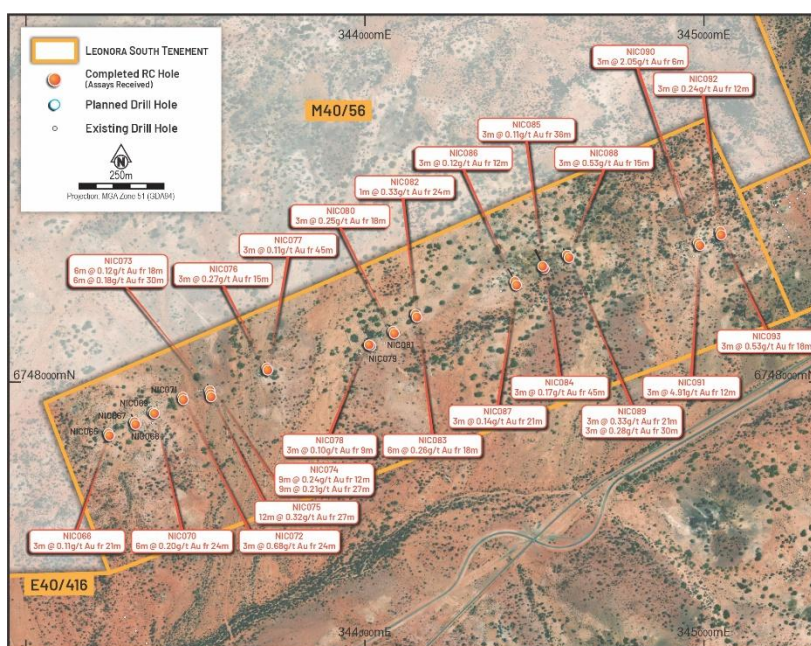


Figure 6 – Plan View of Drilling at Niagara West – Pirie, La Trobe, La Trobe East and Euroa

ASX:GA8

GoldArc Resources

goldarcres.com.au

104 Colin Street
West Perth WA 6005

+618 9420 8208

ASX:GA8

GoldArc Resources

goldarcres.com.au

104 Colin Street
West Perth WA 6005

+61 8 9420 8208

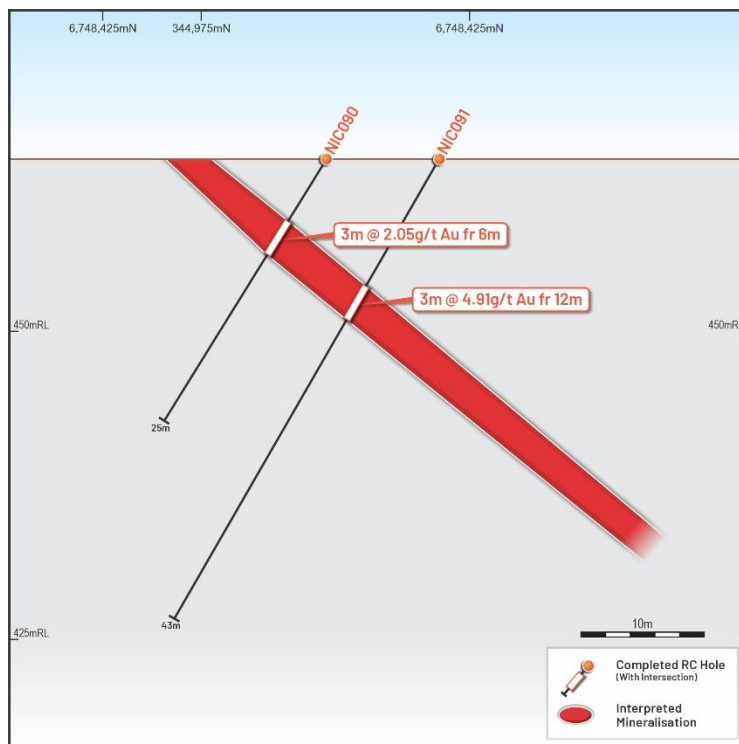


Figure 7 – Cross Section at Euroa (NIC090 and 91)

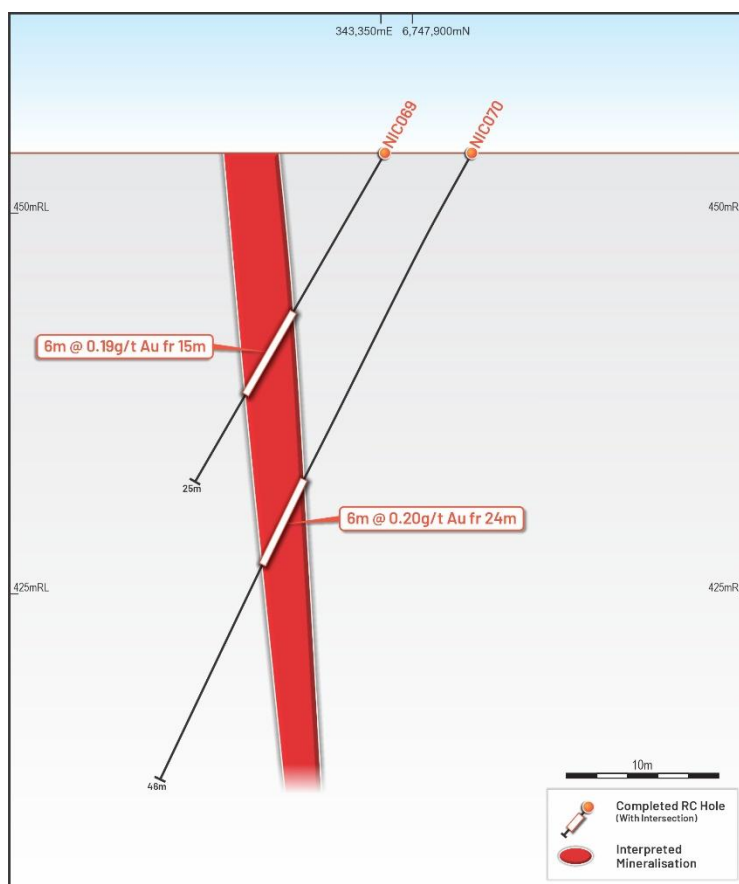


Figure 8 – Cross Section at Pirie (NIC069 and NIC070)

Next Steps

The Company is advancing on the exploration success at Leonora South with a clear plan:

- The company is awaiting results from the aircore program at the Whistler prospect, located west of Carnavale's (ASX:CAV) Swiftsure South Project, and at Jessop Creek
- RC drilling programs are being planned for the Cosmopolitan and Niagara West prospects with drilling to commence in the next few months
- Concurrently, at the Leonora North Gold Project, a major soil survey is underway at Mt Stirling looking for additional mineralised trends

This announcement has been authorised for release by the Board of Directors.

- ENDS -

Investors

Paul Stephen

Managing Director

GoldArc Resources Limited

info@goldarcres.com.au

Investor Relations

Madeline Howson

Investor Relations

Discover Investor Relations

madeline@discover.com.au

ASX:GA8

GoldArc Resources

goldarcres.com.au

104 Colin Street
West Perth WA 6005

+618 9420 8208



Forward Looking Statements Disclaimer

This announcement contains certain “forward-looking statements” and comments about future matters. Forward-looking statements can generally be identified by the use of forward-looking words such as, “expect”, “anticipate”, “likely”, “intend”, “should”, “estimate”, “target”, “outlook”, and other similar expressions and include, but are not limited to, indications of, and guidance or outlook on, future events, growth opportunities, exploration activities or the financial position or performance of the Company. You are cautioned not to place undue reliance on forward-looking statements. Any such statements, opinions and estimates in this release speak only as of the date hereof, are preliminary views and are based on assumptions and contingencies subject to change without notice. Forward-looking statements are provided as a general guide only. There can be no assurance that actual outcomes will not differ materially from these forward-looking statements. Any such forward-looking statement also inherently involves known and unknown risks, uncertainties and other factors and may involve significant elements of subjective judgement and assumptions that may cause actual results, performance and achievements to differ. Except as required by law the Company undertakes no obligation to finalise, check, supplement, revise or update forward-looking statements in the future, regardless of whether new information, future events or results or other factors affect the information contained in this announcement.

Competent Persons Statements

The information in this report as it relates to exploration results and geology is based on, and fairly represents, information and supporting documentation that was compiled by Mr. Ziggy Lubieniecki, who is a director and shareholder of the Company. Mr. Lubieniecki has sufficient experience which is relevant to the styles of mineralisation and types of deposit under consideration and to the activities which he is undertaking to qualify as a Competent Person as defined in the 2012 Edition of the Australasian Code for Reporting of Exploration Results, Mineral Resources and Ore Reserves'. Mr. Lubieniecki consents to the inclusion in the report of the matters based on the information in the form and context in which it appears.

The information in this announcement that relates to the Orion-Sapphire Mineral Resources is contained in the ASX announcement released on 28 May 2024. The information in this announcement that relates to the gold Mineral Resources for the Mt Stirling Project is contained in the ASX announcements released on 25 February 2019, 29 January 2020 and 5 September 2022. The Company confirms that it is not aware of any new information or data that materially affects the information in the relevant market announcements, and that all material assumptions and technical parameters underpinning the estimates in the relevant announcement continue to apply and have not materially changed. that the Company confirms that the form and context in which the Competent Persons findings are presented have not been materially modified from the original announcements.

ASX:GA8

GoldArc Resources

goldarcres.com.au

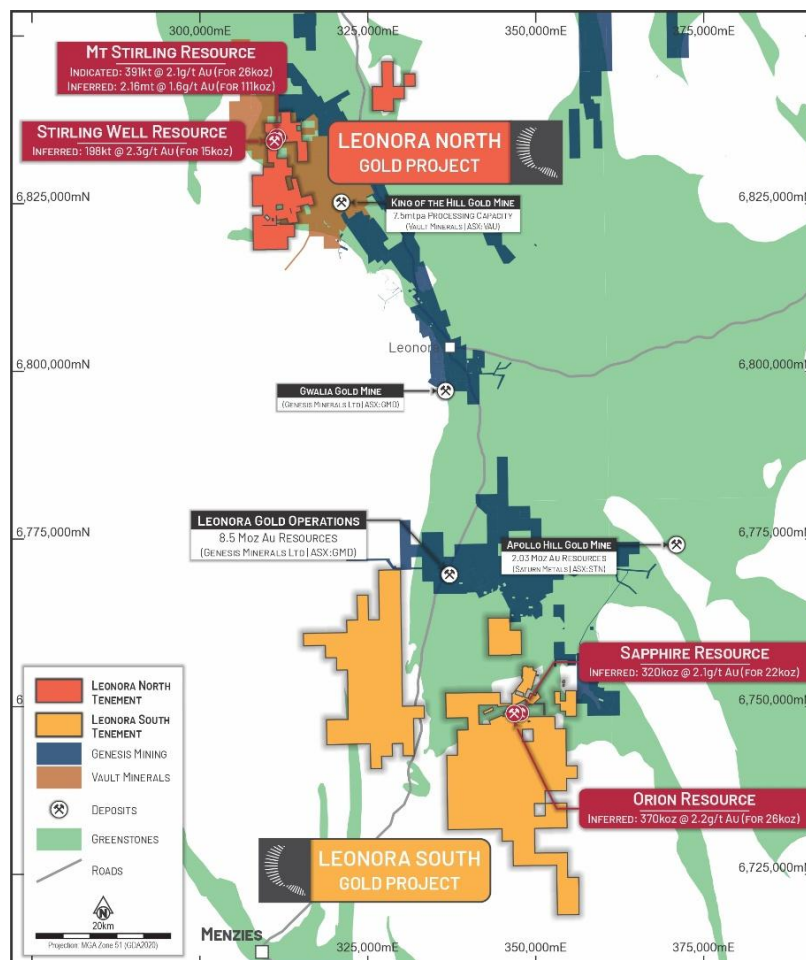
104 Colin Street
West Perth WA 6005

+618 9420 8208



About GoldArc Resources

GoldArc Resources Limited (ASX:GA8) is a Western Australian focused mineral exploration company with a portfolio of highly prospective gold projects located in the world-class Leonora and Kookynie districts of the Eastern Goldfields. GoldArc's strategy is focused on growing its existing 200,000oz JORC resource base and making new, large-scale discoveries through a disciplined and systematic approach to exploration.



GoldArc Resources Total JORC Mineral Resources

GoldArc Gold Projects	Category	Tonnes	Gold Grade (g/t Au)	Gold Ounces
Leonora North – Mt Stirling	Indicated	391,000	2.1	26,000
	Inferred	2,158,000	1.6	111,000
Leonora North – Stirling Well	Inferred	198,000	2.3	15,000
Leonora South – Orion	Inferred	370,000	2.2	26,409
Leonora South – Sapphire	Inferred	320,000	2.1	21,605
Total		3,437,000	1.82	200,064

ASX:GA8

GoldArc Resources

goldarcres.com.au

104 Colin Street
West Perth WA 6005

+618 9420 8208

Appendix 1 – RC Drillhole Information

Collar Information

Coordinates provided in GDA94_Zone51S

Prospect	Hole ID	Easting	Northing	RL	Azimuth	Dip	Depth
Woodpecker South	NIC057	348,158	6,754,675	442	270	-60	79
Woodpecker South	NIC058	348,179	6,754,676	442	270	-60	120
Whistler	NIC059	348,915	6,754,236	442	289	-60	30
Whistler	NIC060	348,919	6,754,234	442	289	-60	49
Whistler	NIC061	348,899	6,754,179	442	289	-60	30
Whistler	NIC062	348,905	6,754,176	442	289	-60	49
Whistler	NIC063	348,878	6,754,124	442	289	-60	30
Whistler	NIC064	348,888	6,754,124	442	289	-60	49
Pirie	NIC065	343,243	6,747,851	454	330	-60	25
Pirie	NIC066	343,246	6,747,844	454	330	-60	40
Pirie	NIC067	343,320	6,747,885	454	330	-60	46
Pirie	NIC068	343,323	6,747,877	454	330	-60	66
Pirie	NIC069	343,374	6,747,913	454	330	-60	25
Pirie	NIC070	343,379	6,747,909	454	330	-60	46
Pirie	NIC071	343,462	6,747,958	454	330	-60	31
Pirie	NIC072	343,464	6,747,950	454	330	-60	43
Pirie	NIC073	343,542	6,747,977	454	330	-60	37
Pirie	NIC074	343,544	6,747,967	454	330	-60	37
Pirie	NIC075	343,546	6,747,958	454	330	-60	55
Pirie	NIC076	343,710	6,748,044	454	330	-60	31
Pirie	NIC077	343,713	6,748,037	454	330	-60	55
La Trobe	NIC078	344,012	6,748,112	458	325	-60	25
La Trobe	NIC079	344,017	6,748,108	458	325	-60	49
La Trobe	NIC080	344,082	6,748,152	458	325	-60	37
La Trobe	NIC081	344,086	6,748,145	458	325	-60	55
La Trobe	NIC082	344,149	6,748,201	458	325	-60	25
La Trobe	NIC083	344,153	6,748,193	458	325	-60	43
La Trobe East	NIC084	344,442	6,748,298	458	325	-60	97
La Trobe East	NIC085	344,447	6,748,287	458	325	-60	115
La Trobe East	NIC086	344,524	6,748,343	458	325	-60	79
La Trobe East	NIC087	344,529	6,748,336	458	325	-60	97
La Trobe East	NIC088	344,596	6,748,376	458	325	-60	37
La Trobe East	NIC089	344,602	6,748,368	458	325	-60	55
Euroa	NIC090	344,983	6,748,412	464	330	-60	25
Euroa	NIC091	344,988	6,748,404	464	330	-60	43
Euroa	NIC092	345,048	6,748,445	464	330	-60	25
Euroa	NIC093	345,051	6,748,435	464	330	-60	43

ASX:GA8

GoldArc Resources

goldarcres.com.au

104 Colin Street
West Perth WA 6005

+618 9420 8208





Significant Intercepts (Au > 0.1 g/t)

Prospect	Hole ID	Sample ID	From	To	Au ppm
Woodpecker South	NIC057	GAR00013	36	39	4.89
Woodpecker South	NIC057	GAR00014	39	42	0.14
Whistler	NIC060	GAR00094	30	33	0.24
Whistler	NIC060	GAR00096	36	39	0.14
Whistler	NIC061	GAR00107	12	15	1.23
Whistler	NIC063	GAR00136	12	15	0.19
Whistler	NIC064	GAR00145	9	12	0.28
Whistler	NIC064	GAR00146	12	15	0.12
Whistler	NIC064	GAR00147	15	18	0.13
Whistler	NIC064	GAR00148	18	21	0.15
Whistler	NIC064	GAR00149	21	24	0.40
Pirie	NIC066	GAR00179	21	24	0.11
Pirie	NIC067	GAR00191	15	18	0.27
Pirie	NIC067	GAR00198	36	39	0.12
Pirie	NIC069	GAR00232	12	15	0.23
Pirie	NIC069	GAR00233	15	18	0.15
Pirie	NIC070	GAR00245	24	27	0.17
Pirie	NIC070	GAR00246	27	30	0.22
Pirie	NIC072	GAR00274	24	27	0.68
Pirie	NIC073	GAR00289	18	21	0.11
Pirie	NIC073	GAR00290	21	24	0.14
Pirie	NIC073	GAR00293	30	33	0.22
Pirie	NIC073	GAR00294	33	36	0.14
Pirie	NIC074	GAR00301	12	15	0.18
Pirie	NIC074	GAR00303	15	18	0.35
Pirie	NIC074	GAR00304	18	21	0.20
Pirie	NIC074	GAR00307	27	30	0.18
Pirie	NIC074	GAR00308	30	33	0.16
Pirie	NIC074	GAR00309	33	36	0.29
Pirie	NIC075	GAR00317	18	21	0.11
Pirie	NIC075	GAR00320	27	30	0.25
Pirie	NIC075	GAR00321	30	33	0.11
Pirie	NIC075	GAR00322	33	36	0.25
Pirie	NIC075	GAR00323	36	39	0.66
Pirie	NIC075	GAR00328	45	48	0.19
Pirie	NIC077	GAR00360	45	48	0.11
La Trobe	NIC078	GAR00367	9	12	0.10
La Trobe	NIC080	GAR00398	18	21	0.25
La Trobe	NIC083	GAR00443	18	21	0.42
La Trobe	NIC083	GAR00444	21	24	0.10
La Trobe East	NIC084	GAR00467	39	42	0.10
La Trobe East	NIC084	GAR00469	45	48	0.17
La Trobe East	NIC085	GAR00503	36	39	0.11
La Trobe East	NIC086	GAR00536	12	15	0.12
La Trobe East	NIC087	GAR00568	21	24	0.14
La Trobe East	NIC088	GAR00603	15	18	0.53
La Trobe East	NIC089	GAR00618	21	24	0.33
La Trobe East	NIC089	GAR00621	30	33	0.28
Euroa	NIC090	GAR00634	6	9	2.05
Euroa	NIC091	GAR00645	12	15	4.91
Euroa	NIC092	GAR00662	12	15	0.24
Euroa	NIC093	GAR00673	18	21	0.53

ASX:GA8

GoldArc Resources

goldarcres.com.au

104 Colin Street
West Perth WA 6005

+618 9420 8208



Appendix 2 – JORC Code, 2012 Edition – Table 1

Section 1 – Sampling Techniques and Data

Criteria	Commentary
Sampling techniques	<ul style="list-style-type: none"> Samples within the Projects were collected using Reverse Circulation (RC Holes) were angled at 60°. Given the status of the Project this is considered reasonable. RC samples were collected every 3m downhole using a cyclone splitter. Samples were collected using industry standard methods All samples were crushed at the independent international accredited laboratory, 50g Fire Assay RC samples an established Industry-standard method for gold mineralisation The sampling techniques used are deemed appropriate for the style of mineralisation and exploration undertaken Gold Arc ensures all sample preparation was completed by independent international accredited laboratories. For the historical holes KYA17091-KYA17094 data refer to WAMEXa11572 report
Drilling techniques	<ul style="list-style-type: none"> RC Drilling was undertaken by Drill Safe Services; Industry Drilling methods and equipment were utilised to maximise sample integrity and recovery For the historical holes KYA17091-KYA17094 data refer to WAMEXa11572 report
Drill sample recovery	<ul style="list-style-type: none"> All care was taken by Drill Safe Services to maximise the drill sample recovery Sample recovery and condition data are noted in geological comments as part of the logging process for RC drilling No quantitative twinned drilling has been undertaken. No relationship was able to be settled due to limited data For the historical holes KYA17091-KYA17094 data refer to WAMEXa11572 report
Logging	<ul style="list-style-type: none"> All drill holes have been geologically logged to an appropriate level of detail to support a mineral resource estimation. Logging is qualitative in nature based on the observational skills and experience of the rig Geologist All drilling was logged from start of hole to end of hole and all holes were logged. Logging was captured digitally For the historical holes KYA17091-KYA17094 data refer to WAMEXa11572 report
Sub-sampling techniques and sample preparation	<ul style="list-style-type: none"> Samples were prepared and analysed at Intertek Laboratories in Kalgoorlie and Perth Samples were crushed so that each sample had a nominal 85% passing 2mm All samples were analysed for gold via 50g fire assay Sample preparation was by Intertek laboratory in Perth, and the samples were pulverised to less than 75um for 50g fire assay for all samples. Pulverisation was required for 50g Fire Assays – RC samples. The QAQC procedure included assaying of Oreas Standards, sand blanks and quartz washes between certain samples Industry standard sampling methods employed, and size of samples is appropriate for material sampled For the historical holes KYA17091-KYA17094 data refer to WAMEXa11572 report
Quality of assay data and laboratory tests	<ul style="list-style-type: none"> All samples were assayed by industry-standard techniques Typical analysis methods are detailed in the previous section and are considered 'near total' values Routine 'standard' (mineralised pulp) Certified Reference Material (CRM) was inserted by Gold Arc at a nominal rate of 1 in 25 samples Routine 'blank' material (unmineralised sand) was inserted at a nominal rate of 1 in 50 samples Composite duplicates along with primary duplicates were obtained at a nominal rate of 1 in 50 samples No significant issues have been noted. The techniques are considered quantitative in nature The Analytical method is considered appropriate for samples with visible gold observed The analytical laboratories provided their own routine quality controls within their own practices as per international ISO standards For the historical holes KYA17091-KYA17094 data refer to WAMEXa11572 report
Verification of sampling and assaying	<ul style="list-style-type: none"> Independent verification of significant intersections was carried out by additional company personnel, reviewing the original laboratory files and the assay database. Additional company personnel were present from the point of logging the geology to submission of the samples This drilling was in confirmation holes for verification purposes. There has been no adjustment to the assay data For the historical holes KYA17091-KYA17094 data refer to WAMEXa11572 report
Location of data points	<ul style="list-style-type: none"> Drill hole collars were surveyed in GDA 94_51 coordinates using both handheld GPS Down hole surveys were taken at the end of the drilling using the Axis Gyro tool For the historical holes KYA17091-KYA17094 data refer to WAMEXa11572 report

ASX:GA8

GoldArc Resources

goldarcres.com.au

104 Colin Street
West Perth WA 6005

+618 9420 8208





For personal use only

ASX:GA8

GoldArc Resources

goldarcres.com.au

104 Colin Street
West Perth WA 6005

+618 9420 8208



Criteria	Commentary
Data spacing and distribution	<ul style="list-style-type: none"> Drill spacing is appropriate for the reporting of exploration results For the historical holes KYA17091-KYA17094 data refer to WAMEXa11572 report
Orientation of data in relation to geological structure	<ul style="list-style-type: none"> The drilling is approximately perpendicular to the strike and dip of mineralisation and therefore the sampling is considered representative of the mineralised zones The deposits are aligned with well-defined structural orientations and drilling is oriented to generally intersect at a high angle to the mineralisation and the holes have been angled at -60 For the historical holes KYA17091-KYA17094 data refer to WAMEXa11572 report
Sample security	<ul style="list-style-type: none"> Samples were delivered to the laboratory prep facility in Kalgoorlie by Gold Arc personnel For the historical holes KYA17091-KYA17094 data refer to WAMEXa11572 report
Audits or reviews	<ul style="list-style-type: none"> Reviews by independent consultants have been carried out No formal audits have taken place For the historical holes KYA17091-KYA17094 data refer to WAMEXa11572 report

Section 2 – Reporting of Exploration Results

Criteria	Commentary
Mineral tenement and land tenure status	<ul style="list-style-type: none"> RC was drilled at E40/415 on Mining Lease M40/27. GoldArc has a 70% interest in the Leonora South Gold Project (Kookynie Project), the remaining 30% is held by Kalgoorlie Mining Associates Pty Ltd and Zigmund Wolski Historical Drilling Data Review was carried on valid Western Australian Mining Licenses 100% owned by Ziggy Wolski and the leases are in good standing The Niagara Gold Project in the Kookynie Gold District of Western Australia comprises eight granted Mining Leases (M40/02, M40/08, M40/26, M40/56, M40/117, M40/192, M40/342, M40/344), two granted Exploration Licenses (E40/396 and E40/397), three pending Exploration Licenses (E40/413, E40/415, E40/416), and nine pending Prospecting Licenses (P40/1533, P40/1546, P40/1547, P40/1548, P40/1549, P40/1550, P40/1553, P40/1556, P40/1557). The combined area of the project is approximately 38, 400 ha There is a 2% Royalty to a third party for minerals on these licenses There are no known impediments to obtaining a license to operate
Exploration done by other parties	<ul style="list-style-type: none"> Niagara Gold Tenements have undergone multiple drill programs over a protracted period focusing on areas around the historic prospects of Cosmopolitan, Diamantina, Orion, Sapphire, Gladstone, Missing Link, Eclipse, OK, Justice, Challenge, Niagara, Latrobe, and W.E.G. This drilling has already resulted in modern (post 1980) mining campaigns at Diamantina, Orion, and Sapphire. Numerous significant intercepts occur outside of mined areas 1982 Australian Anglo-American drilling at Orion Sapphire. 1981-1985 Mogul Mining 1982-1987 BP Minerals, Minplex Resources and Spargos Exploration 1984-1989 BP Minerals 1982-1990 BP Minerals and Hill Minerals and Hillman Gold mines explored the Sapphire workings with RAB and RC drilling 1990-2000 Money Mining drilled the Diamantina and Cosmopolitan mineralization CRC and DRC drillholes 1993-1994 Horizon Mining Niagara Project. RC and Diamond drilling for a resource definition at Orion and Sapphire 2000-2010 Diamond ventures Kookynie Resources and Barminco drilled Diamantina and Cosmopolitan. Kookynie Resources drilled extensions at Sapphire and Orion. 2010-2020 Nex Metals from 2009-2013, sold to A&C Mining Investments in 2014. A&C completed Aircore and RC drilling
Geology	<ul style="list-style-type: none"> The Kookynie Gold Project is located in the central part of the Norseman-Wiluna belt of the Eastern Goldfields terrane. Host rocks in the region are primarily metasedimentary and metavolcanic lithologies of the Melita greenstones. Gold mineralisation is developed within structures encompassing a range of orientations and deformation styles. At the Gladstone, Orion and Sapphire deposits, gold mineralisation is controlled by a quartz vein system which trends east-northeast across an iron rich dolerite/gabbro host rock (the Niagara Gabbro Complex). The system dips to the south at between 50°

Criteria	Commentary
	and 80°. The mineralised structure, which is generally 2 to 5 metres wide, appears to be brittle with only minor shearing and alteration of the host gabbro.
Drill hole Information	<ul style="list-style-type: none"> All results reported for historical intersections were reported by previous exploration companies. Drill holes KYA17091-94 onwards were drilled and reported by A & C Mining Investment in 2017 The extent of drilling is shown with diagrams and tables included in this announcement
Data aggregation methods	<ul style="list-style-type: none"> All reported assay intervals have been length weighted. No top cuts were applied. A nominal cut-off of 0.5 g/t Au was applied with up to 2m of internal dilution allowed Intervals reported for all holes that are used in the Mineral Resource Estimate High grade mineralised intervals internal to broader zones of lower grade mineralisation are reported as included intervals No metal equivalent values have been used or reported
Relationship between mineralisation widths and intercept lengths	<ul style="list-style-type: none"> The drill holes are interpreted to be approximately perpendicular to the strike and dip of mineralisation. All results were reported as down holes
Diagrams	<ul style="list-style-type: none"> Suitable figures have been included in the body of the announcement
Balanced reporting	<ul style="list-style-type: none"> Key results and conclusions have been included in the body of the announcement
Other substantive exploration data	<ul style="list-style-type: none"> Compilation of all historical exploration data at the project is underway and will be stored digitally
Further work	<ul style="list-style-type: none"> Follow up field work is planned to include follow up sampling of 3m composites and additional drilling over areas of significant gold mineralisation

ASX:GA8

GoldArc Resources

goldarcres.com.au

104 Colin Street
West Perth WA 6005

+618 9420 8208