

ASX Announcement 9 February 2026

# GoldArc Makes a Strong Start to 2026 with Aggressive Exploration at the Leonora North Gold Project

## Highlights

- Multiple rock chip samples from recently delineated soil anomalies, emphasise the high-grade potential of the Leonora North Gold Project. Significant results include:
  - 51.9g/t Au (ASR03106)
  - 11.2g/t Au (ASR03102)
  - 14.2g/t Au (ASR03101)
  - 1.5g/t Au (ASR03099)
- Two additional new gold anomalies (S6 and S7) were identified from a 317-soil sample survey at Leonora North Gold Project.
- The soil survey was undertaken primarily to sterilise P37/8240 (M37/1354) for a planned waste dump area and to infill gaps in previous soil surveys.
- A new, high-priority S6 anomaly was defined, measuring approximately 1.1 km long and located ~150 m southwest of (and parallel to) the Mt Stirling Gold Deposit.
- The S7 anomaly is approximately 700 m long and is located ~350 m southwest of the Mt Stirling Gold Deposit and ~100 m northeast of the Mt Stirling Well Deposit. The maximum grade over the S7 anomaly was 793 ppb Au.
- A ~8,500 m RC development drilling program is scheduled to commence in March 2026 at the Cosmopolitan, Orion, Sapphire, Eclipse and Euroa deposits.
- A ~30,000 m RC program is scheduled to commence in February 2026 at Mt Stirling and Mt Stirling Well to support resource development.

**GoldArc Resources Limited (ASX:GA8) ('GoldArc' or 'the Company')** is pleased to report highly encouraging results from a 317-sample soil survey at its Leonora North Gold Project. The program has identified two additional main gold anomalies that have not previously been appropriately drill-tested.

**GoldArc Resources' Managing Director, Paul Stephen, commented:** "These results are outstanding and a testament to our systematic exploration approach. To define five brand-new, undrilled anomalies is a great outcome, but the quality of the S7 target is exceptional.

*These two new anomalies, S6 and S7 located between Mt Stirling and Mt Stirling Well are very encouraging as they could have similar untapped potential to be as large as those already defined at Mt Stirling and Mt Stirling Well. This fully validates our belief in the untapped discovery potential at the Leonora North Gold Project, and we have now generated a pipeline of high-priority targets for immediate follow-up and drilling."*

**ASX:GA8**

GoldArc Resources

goldarcres.com.au

104 Colin Street  
West Perth WA 6005

+618 9420 8208



### Soil Survey and Rock Chip Sampling

During 2025, 902 soil samples were collected in three phases in the northern part of the Leonora North Project. Multiple gold anomalies were identified. Anomalies S1 and S2 are clearly associated with the Mt Stirling Gold Deposit and the Hydra and Tyrannus prospects. Anomalies S3, S4 and S5 were never drilled-tested.

The mapping and rock chipping at S2, S3 and S4 targets have returned elevated gold values (see Table 1) within quartz veining and sheared mafic and felsic lithologies.

**Table 1 – Significant Rock Chips**

GoldArc ID	Project	East	North	Au_g/t	Au_g/t_Check	Target
ASR03098	Mt Stirling	312,282	6,834,868	0.947		S2
ASR03099	Mt Stirling	312,277	6,834,864	1.492		S2
ASR03100	Mt Stirling	312,145	6,834,849	0.184		S2
ASR03101	Mt Stirling	312,153	6,834,864	13.759	14.149	S2
ASR03102	Mt Stirling	312,147	6,834,852	11.184	10.619	S2
ASR03103	Mt Stirling	310,895	6,836,260	0.121		S3
ASR03104	Mt Stirling	310,852	6,836,231	0.181		S3
ASR03106	Mt Stirling	310,778	6,836,846	49.298	51.916	S4
ASR03108	Mt Stirling	310,403	6,836,490	0.164		S4
GAR1745	Mt Stirling	310,820	6,835,921	0.227		S3

During early January 2026, soil survey was carried out with 317 soils samples collected at Leonora North Gold Project. The goal was to sterilise mostly P37/8240 (M37/1354) for planned waste dump and gaps in previous soil surveys.

Two additional strong new gold anomalies (S6 and S7) were identified. High-priority S6 anomaly defined, measuring 1.1km long and only about 150m southwest of Mt Stirling gold deposit and parallel to it.

The S7 anomaly measuring approximately 700m long and about 350m southwest of Mt Stirling gold deposit but about 100m northeast of Mt Stirling Well deposit. The maximum grade over S7 anomaly was 793ppb Au.

The survey indicates that there is additional gold potential to increase the resources along the soil anomalies that have not been drill-tested. GoldArc is planning to drill-test these anomalies sometime in 2026 as they could generate additional shallow ounces.

The strong S8 anomaly is associated with Mt Stirling Well old workings.

**ASX:GA8**

**GoldArc Resources**

goldarcres.com.au

104 Colin Street  
West Perth WA 6005

+618 9420 8208



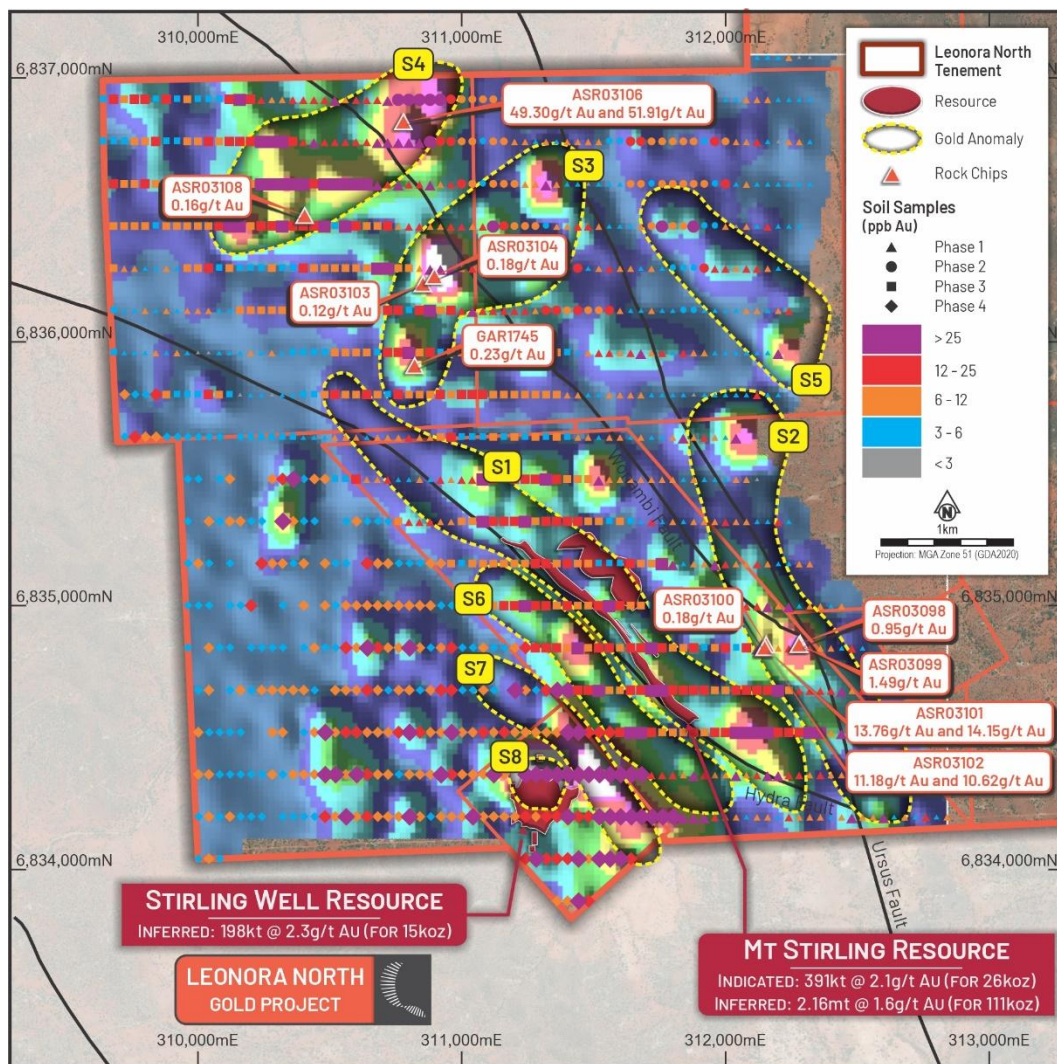
**ASX:GA8**

**GoldArc Resources**

goldarcres.com.au

104 Colin Street  
West Perth WA 6005

+618 9420 8208



**Figure 1 – Gold Mineralisation in Rock Chips and Gold Anomalies in Soil Survey at Leonora North Project**



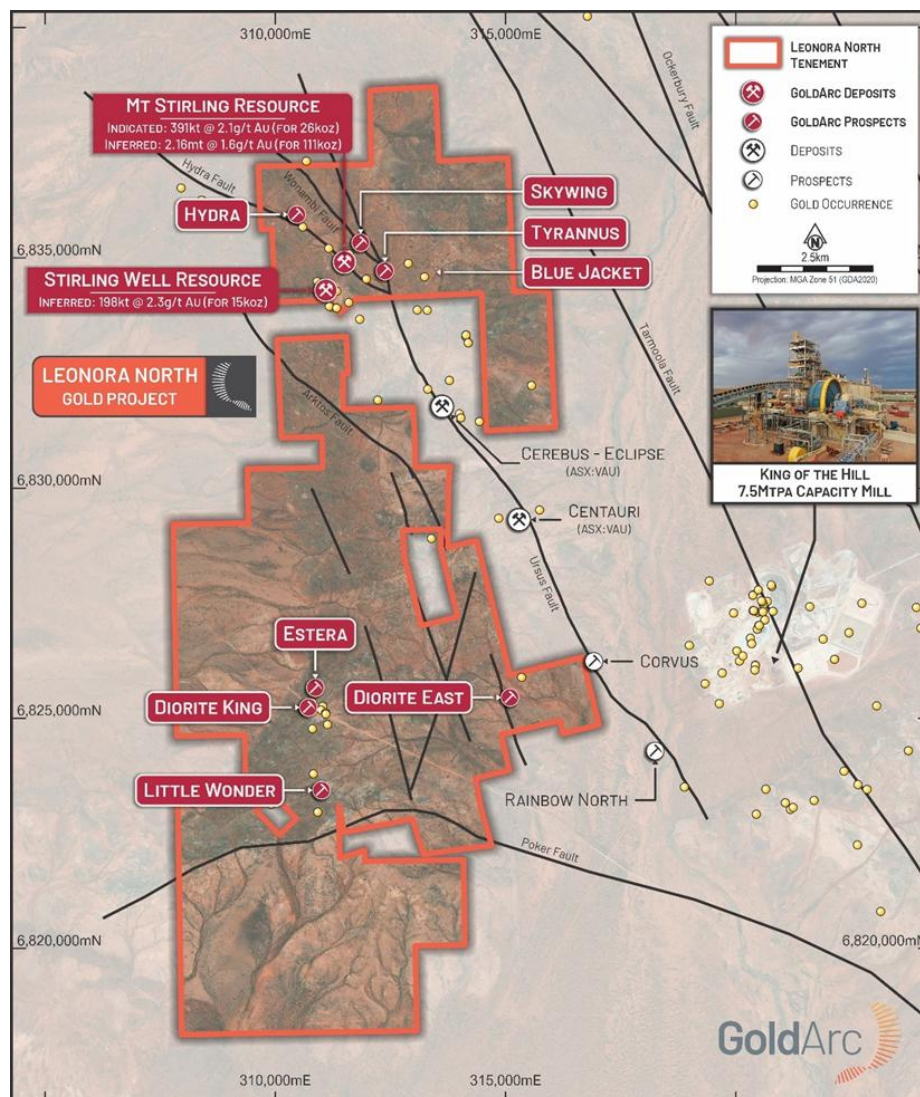
**ASX:GA8**

**GoldArc Resources**

goldarcres.com.au

104 Colin Street  
West Perth WA 6005

+618 9420 8208



**Figure 2 – Location of Leonora North Project**

### Next Steps

The Company is immediately advancing an aggressive exploration strategy following these results:

- A major ~8,500m RC development drilling program is to commence in March 2026 at Cosmopolitan-Orion-Sapphire-Eclipse-Euroa gold deposits.
- A major ~30,000m RC program will commence in February 2026 at Mt Stirling and Mt Stirling Well to support resource development.
- A further soil survey is continuing northeast of Mt Stirling gold deposit, where there has been very limited historical work.

This announcement has been authorised for release by the Board of Directors.

- ENDS -

#### Investors

##### Paul Stephen

Managing Director

GoldArc Resources Limited

[info@goldarcres.com.au](mailto:info@goldarcres.com.au)

#### Investor Relations

##### Madeline Howson

Investor Relations

Discovir Investor Relations

[madeline@discovir.com.au](mailto:madeline@discovir.com.au)

#### Forward-Looking Statements Disclaimer

This announcement contains certain "forward-looking statements" and comments about future matters. Forward-looking statements can generally be identified by the use of forward-looking words such as, "expect", "anticipate", "likely", "intend", "should", "estimate", "target", "outlook", and other similar expressions and include, but are not limited to, indications of, and guidance or outlook on, future events, growth opportunities, exploration activities or the financial position or performance of the Company. You are cautioned not to place undue reliance on forward-looking statements. Any such statements, opinions and estimates in this release speak only as of the date hereof, are preliminary views and are based on assumptions and contingencies subject to change without notice. Forward-looking statements are provided as a general guide only. There can be no assurance that actual outcomes will not differ materially from these forward-looking statements. Any such forward-looking statement also inherently involves known and unknown risks, uncertainties and other factors and may involve significant elements of subjective judgement and assumptions that may cause actual results, performance and achievements to differ. Except as required by law, the Company undertakes no obligation to verify, check, supplement, revise or update forward-looking statements in the future, regardless of whether new information, future events or results or other factors affect the information contained in this announcement.

#### Competent Person Statement

The information in this report as it relates to exploration results and geology is based on, and fairly represents, information and supporting documentation that was compiled by Mr. Ziggy Lubieniecki, who is a director and shareholder of the Company. Mr. Lubieniecki has sufficient experience which is relevant to the styles of mineralisation and types of deposit under consideration and to the activities which he is undertaking to qualify as a Competent Person as defined in the 2012 Edition of the Australasian Code for Reporting of Exploration Results, Mineral Resources and Ore Reserves. Mr. Lubieniecki consents to the inclusion in the report of the matters based on the information in the form and context in which it appears.

The information in this announcement that relates to the Orion-Sapphire Mineral Resources is contained in the ASX announcement released on 28 May 2024. The information in this announcement that relates to the gold Mineral Resources for the Mt Stirling Project is contained in the ASX announcements released on 25 February 2019, 29 January 2020 and 5 September 2022. The Company confirms that it is not aware of any new information or data that materially affects the information in the relevant market announcements, and that all material assumptions and technical parameters underpinning the estimates in the relevant announcement continue to apply and have not materially changed. The Company confirms that the form and context in which the Competent Persons findings are presented have not been materially modified from the original announcements.

**ASX:GA8**

**GoldArc Resources**

[goldarcres.com.au](http://goldarcres.com.au)

104 Colin Street  
West Perth WA 6005

+618 9420 8208

## Appendix 1 – JORC Code, 2012 Edition – Table 1

### Section 1 – Sampling Techniques and Data

(Criteria in this section apply to all succeeding sections)

Criteria	Commentary
<b>Sampling techniques</b>	<ul style="list-style-type: none"> <li>No drilling is reported in this release.</li> <li>Soil samples were taken from below the organic layer (typically ~10cm below surface) and consisted of the -80-mesh fraction in most cases.</li> <li>Gold analyses were conducted using aqua regia AR25/MS – an established industry-standard method for gold mineralisation</li> <li>Multi-element analyses were conducted via PXRF. The PXRF analyses are not reported herein.</li> </ul>
<b>Drilling techniques</b>	<ul style="list-style-type: none"> <li>No drilling is reported in this release.</li> </ul>
<b>Drill sample recovery</b>	<ul style="list-style-type: none"> <li>No drilling is reported in this release.</li> </ul>
<b>Logging</b>	<ul style="list-style-type: none"> <li>No drilling is reported in this release.</li> </ul>
<b>Sub-sampling techniques and sample preparation</b>	<ul style="list-style-type: none"> <li>No drilling is reported in this release.</li> <li>Soil samples were taken from below the organic layer (typically ~10cm below surface) and consisted of the minus 80 mesh fraction. This fraction was subsequently pulverised. Gold analyses were conducted using aqua regia AR25/MS – an established industry-standard method for gold mineralisation</li> <li>Multi-element analyses were conducted via PXRF. The PXRF analyses are not reported herein.</li> </ul>
<b>Quality of assay data and laboratory tests</b>	<ul style="list-style-type: none"> <li>No drilling is reported in this release.</li> <li>Certified reference (CRM) samples and certified blank samples were inserted into the sample sequence at a rate of 1 CRM and 1 blank per 25 samples. Duplicates were conducted at a rate not exceeding 1 duplicate per 50 samples.</li> </ul>
<b>Verification of sampling and assaying</b>	<ul style="list-style-type: none"> <li>No drilling is reported in this release.</li> <li>All sampling conducted is verified by a minimum of two company personnel apart from the Competent Person. Data are transferred from the field onto head office digital storage daily.</li> <li>Assay values below detection were stored in the database as minus the detection limit.</li> <li>Intervals with no samples were recorded in the sample table and excluded from the assay table in the database.</li> <li>Assay files were received electronically from the laboratory. No alterations have been made to primary assay data.</li> </ul>
<b>Location of data points</b>	<ul style="list-style-type: none"> <li>No drilling is reported in this release.</li> <li>Soil and rock chip sampling was located in 3D using hand-held GPS instruments.</li> </ul>
<b>Data spacing and distribution</b>	<ul style="list-style-type: none"> <li>No drilling is reported in this release.</li> <li>Soil sampling spacing is considered appropriate to dispersions.</li> </ul>
<b>Orientation of data in relation to geological structure</b>	<ul style="list-style-type: none"> <li>No drilling is reported in this release.</li> <li>Soil traverses were taken at an orientation dominantly perpendicular to structure.</li> </ul>
<b>Sample security</b>	<ul style="list-style-type: none"> <li>Samples are packed into paper bags which are sealed and conveyed to Intertek in Kalgoorlie by GoldArc personnel.</li> </ul>
<b>Audits or reviews</b>	<ul style="list-style-type: none"> <li>All assay data has been reviewed by two company personnel. No external audits have been conducted.</li> </ul>

**ASX:GA8**

GoldArc Resources

goldarcres.com.au

104 Colin Street  
West Perth WA 6005

+618 9420 8208





## Section 2 – Reporting of Exploration Results

(Criteria in this section apply to all succeeding sections)

Criteria	Commentary
<b>Mineral tenement and land tenure status</b>	<ul style="list-style-type: none"> <li>Areas discussed in herein are located on:</li> <li>M37/1306</li> <li>M37/1305</li> <li>M37/1312</li> <li>M37/1313</li> <li>P37/8240</li> <li>An agreement between Asra Minerals and Ross Crew has been signed whereby Ross Crew retains a royalty on any production.</li> <li>The Mt Stirling Gold Project in the Leonora Gold District of Western Australia comprises sixty-nine leases – 6 Mining leases, 1 Exploration lease and 62 Prospecting leases, The combined area of the project is approximately 17,876 ha.</li> <li>There is a 2% royalty to a third party for minerals on these licenses.</li> <li>There are no known impediments to obtaining a licence to operate.</li> </ul>
<b>Exploration done by other parties</b>	<ul style="list-style-type: none"> <li>Mt Stirling Gold Tenements have undergone multiple drill programs over a protracted period focusing on areas around the historical prospects of Diorite King and Mt Stirling Well. Numerous significant intercepts occur outside of mined areas.</li> <li>In 2014, A&amp;C completed Aircore and RC drilling.</li> <li>Hill Minerals 1984 Diorite King shaft sampling and RAB drilling</li> <li>Esso Minerals 1986 mapping, RAB drilling</li> <li>Mt Edon Mines 1988 mapping, rock chip sampling, RAB drilling, RC drilling during 1997-1998.</li> <li>Tarmoola Australia 2000-2001 mapping and RC drilling on the Ursus Fault.</li> <li>Jupiter Mines 2006-2010 geological reconnaissance, data acquisition, mapping and research on Kurrajong Project. 2006 AC around Diorite King, Golden king and Rose of Diorite. 93 holes for 1767m.</li> <li>Bligh Resources and BMGS in 2010 to compile data for Diorite King. Mapping by Jon Standing, Southern Geoscience Consultants for geophysical interpretation in 2012.</li> <li>Torian Resources (predecessor to Asra) engaged SGC to interpret the whole Mt Stirling Project. RC, diamond and vacuum drilling at Mt Stirling and Yttria REE deposit.</li> </ul>
<b>Geology</b>	<ul style="list-style-type: none"> <li>The Mt Stirling Gold Project is located in the central part of the Norseman-Wiluna belt of the Eastern Goldfields terrane.</li> <li>The project area is in the hinge zone of the gently north-plunging Tarmoola anticline. The greenstone sequence is thought to overlie a major detachment fault separating a granite gneiss complex (Leonora Batholith) from the overlying greenstones. The detachment fault hosts the Sons of Gwalia deposit at Leonora. The project area is an area of extensive gabbro-dolerite-basalt outcrop and subcrop. The mafic rocks dip about the Tarmoola Anticline variably at 30 to 60 degrees and can be divided into predominantly massive basalts in the west and pillowed, variolitic basalts in the east. The Mt Stirling syenogranite/monzogranite has intruded the massive basalts (Evans, 1998).</li> <li>Project stratigraphy consists of a succession of variolitic, pillowed high Mg basalts containing differentiated dolerite/gabbro sills. The two basalt lithotypes are divided by a central shear zone which trends 340° in the south and 315° in the north. The shear zone consists of chlorite±tremolite/actinolite schist with narrow quartz veins. Widely spaced sinistral shear bands trending 300-320° overprint the main foliation. Some quartz veins are compatible with the sinistral movement indicated by the shear bands. The main well-developed steeply (65-80 degrees) east-dipping fabric locally contains a well-developed sub-horizontal mineral lineation which appears to be doubly plunging. No alteration is observed within the shear zone at surface. The main shear zone and shear bands are interpreted to be D2 /- D3 structures.</li> <li>The Mt Stirling syenogranite/monzogranite outcrops to the north of the Diorite CRG leases. Extensive millimetre to centimetre scale quartz veining is present with sericite/muscovite-epidote-pyrite alteration selvages adjacent to many veins. Alteration is not pervasive and is primarily associated with veining. Multiple quartz vein sets are present, producing local stockwork arrays. Numerous felsic dykes and plugs observed throughout the area possibly representing apophyses of the monzogranite pluton.</li> <li>All significant results for completed AC and RC drilling have been tabulated.</li> <li>The extent of drilling is shown with diagrams included in this announcement.</li> </ul>

**ASX:GA8**

**GoldArc Resources**

goldarcres.com.au

104 Colin Street  
West Perth WA 6005

+618 9420 8208





For personal use only

**ASX:GA8**

**GoldArc Resources**

goldarcres.com.au

104 Colin Street  
West Perth WA 6005

+618 9420 8208



Criteria	Commentary
<b>Drill hole Information</b>	<ul style="list-style-type: none"><li>No drilling is reported in this release</li></ul>
<b>Data aggregation methods</b>	<ul style="list-style-type: none"><li>No drilling is reported in this release.</li><li>Soil sampling is depicted as point data and/or contours based on point data. No data aggregation has been conducted.</li></ul>
<b>Relationship between mineralisation widths and intercept lengths</b>	<ul style="list-style-type: none"><li>No drilling is reported in this release</li></ul>
<b>Diagrams</b>	<ul style="list-style-type: none"><li>Suitable figures have been included in the body of the announcement.</li></ul>
<b>Balanced reporting</b>	<ul style="list-style-type: none"><li>Key results and conclusions have been included in the body of the announcement.</li></ul>
<b>Other substantive exploration data</b>	<ul style="list-style-type: none"><li>Compilation of all historical exploration data at the project is underway and will be stored digitally.</li></ul>
<b>Further work</b>	<ul style="list-style-type: none"><li>Follow up field work is planned.</li></ul>



ASX:GA8

GoldArc Resources

goldarcres.com.au

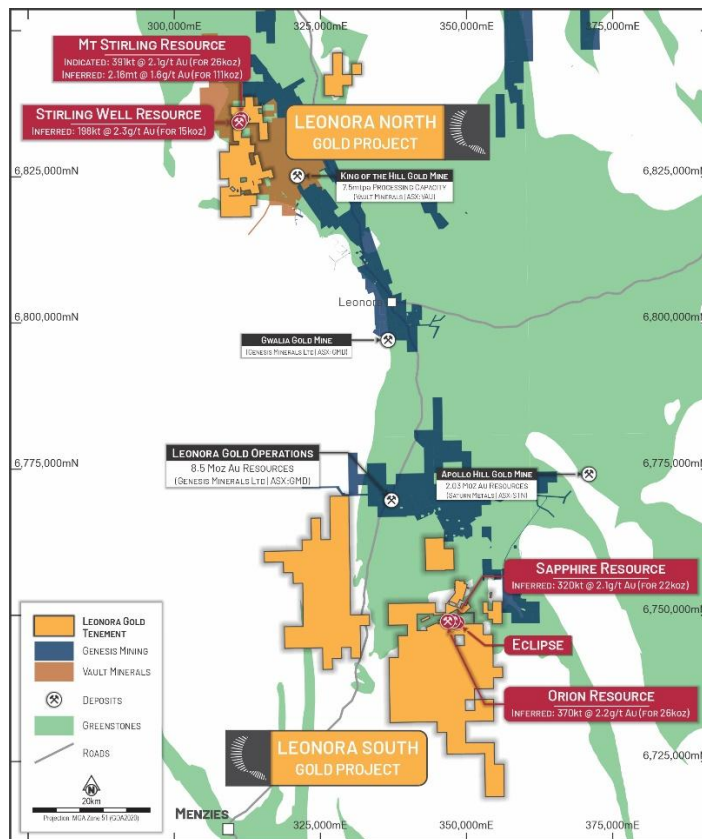
104 Colin Street  
West Perth WA 6005

+618 9420 8208



## About GoldArc Resources

**GoldArc Resources Limited (ASX:GA8)** is a Western Australian focused mineral exploration company with a portfolio of highly prospective gold projects located in the world-class Leonora and Kookynie districts of the Eastern Goldfields. GoldArc's strategy is focused on growing its existing 200,000oz JORC resource base and making new, large-scale discoveries through a disciplined and systematic approach to exploration.



## GoldArc Resources Total JORC Mineral Resources

GoldArc Gold Projects	Category	Tonnes	Gold Grade (g/t Au)	Gold Ounces
Leonora North – Mt Stirling	Indicated	391,000	2.1	26,000
	Inferred	2,158,000	1.6	111,000
Leonora North – Stirling Well	Inferred	198,000	2.3	15,000
Leonora South – Orion	Inferred	370,000	2.2	26,409
Leonora South – Sapphire	Inferred	320,000	2.1	21,605
<b>Total</b>		<b>3,437,000</b>	<b>1.82</b>	<b>200,064</b>