

First Toll Milling Underway from Lucky Strike Gold Mine

12 February 2026

HIGHLIGHTS

- Inaugural toll milling campaign for the Lucky Strike Gold Mine underway.
- 24-hour haulage ongoing, transporting ore to the FMR Investments Pty Ltd Greenfields Mill throughout the month of February.
- First gold from Lucky Strike anticipated by mid-month coinciding with historically elevated spot gold prices.
- A second phase of grade control drilling underway at Lucky Strike targeting the Stage 2 planned South pit.



Figure 1: First stockpiles of Lucky Strike Ore being loaded.

Lefroy Exploration Limited (“**Lefroy**” or “**the Company**”) (ASX: LEX) is pleased to report on the Company’s inaugural toll-milling campaign and mining progress at the Lucky Strike Gold Mine near Kalgoorlie in Western Australia.

The Lucky Strike Gold Deposit contains an MRE of 1.27Mt @ 1.95 g/t Au for 79,600 ounces (Indicated 0.70Mt @ 1.93 g/t Au for 43,400 oz. Inferred 0.57Mt @ 1.97 g/t Au for 36,200 oz).

LEFROY CEO, GRAEME GRIBBIN, COMMENTED:

“We are pleased to confirm that toll-milling is underway at the FMR Greenfields Mill in Coolgardie, representing a truly significant milestone for Lefroy.

“From the initial execution of the mine profit share agreement with partners BML Ventures in February 2025, we are now on the threshold of generating first gold from the Lucky Strike Gold Mine inside a short 12-month period.

“With all upfront funding for the project being provided by BML, we have managed to bring Lucky Strike online with minimal risk exposure to Lefroy shareholders within the context of historically elevated spot gold prices.

“With grade control drilling also now underway to confirm the Stage 2 south pit, we look forward to expanding the mine footprint at Lucky Strike, to mine more ounces within this strong gold price cycle”

INAUGURAL TOLL MILLING CAMPAIGN UNDERWAY

The Company is pleased to announce that toll milling has commenced processing the first parcels of ore from the Lucky Strike Gold Project.

In June 2025, the Company announced that a one-month (February 2026) toll-milling slot had been secured between mine profit share partners BML Ventures Pty Ltd (BML) and FMR Investments Pty Ltd (FMR) utilising the Greenfields Mill in Coolgardie (refer ASX announcement 10 June 2025).



Figure 2: Lucky Strike ore haulage underway to Greenfields Mill (FMR) in Coolgardie

LUCKY STRIKE MINING PROGRESS UPDATE

Significant progress has been made over the first month of 2026, with the Lucky Strike Gold Mine rapidly moving towards first gold production.

Apart from the commencement of haulage and the start of the Company's first toll milling campaign, grade control drilling is now also underway targeting the future Stage 2 south pit (Figure 3).

The drilling program is focused on the top 50-60m from surface, with the target area delineated by the area shown in light yellow in Figure 3.

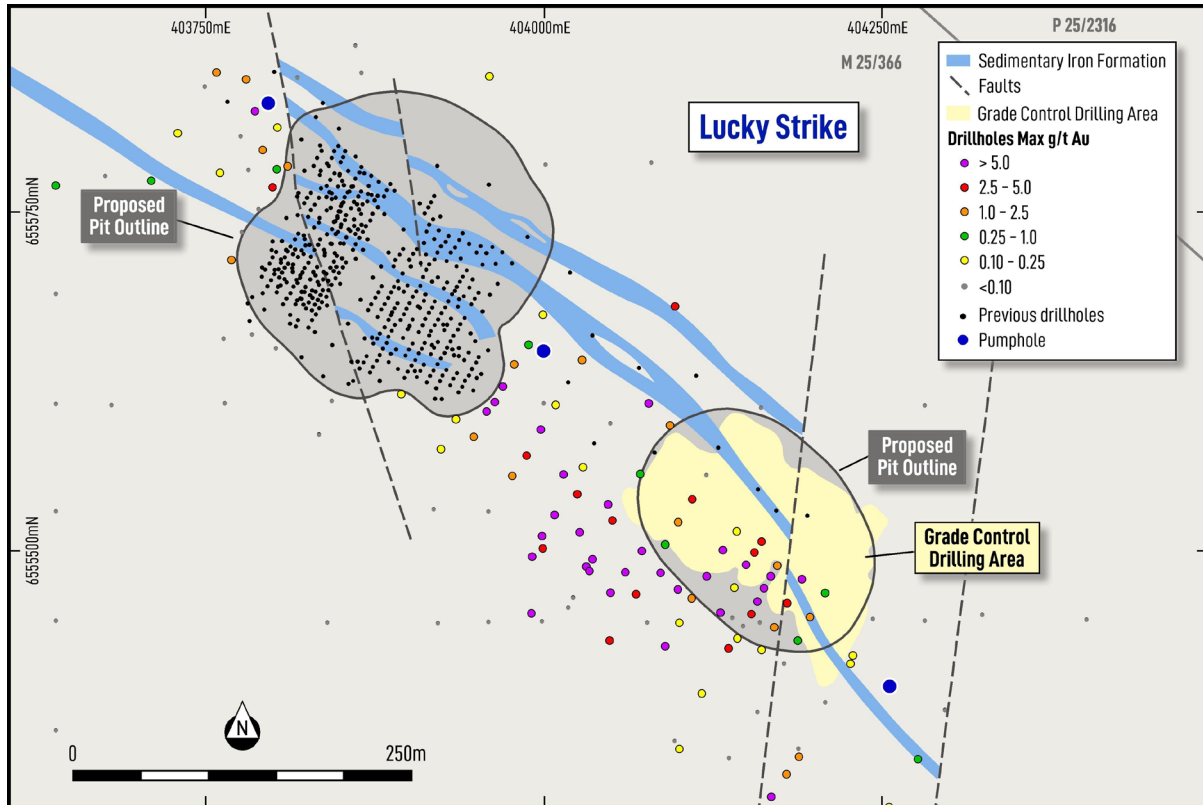


Figure 3: Lucky Strike South Pit (Stage 2) Grade Control drilling target area.

- ENDS -

This announcement has been authorised for release by the Board of Directors.

Graeme Gribbin

Graeme Gribbin
CEO

For further information please contact:

INVESTORS

Graeme Gribbin – CEO
Lefroy Exploration
E. ggribbin@leeroyex.com
P. +61 8 9321 0984
More details: www.leeroyex.com

MEDIA

Fiona Marshall
White Noise Communications
E. fiona@whitenoisecomms.com
P: +61 400 512 109

ABOUT LEFROY EXPLORATION LIMITED

Lefroy Exploration Limited (ASX:LEX) is an active West Australian exploration company focused on developing its flagship Lefroy Project (Figure 4), a contiguous land package of 635km² located in the heart of the world-class Kalgoorlie and Kambalda gold and nickel mining districts and the Lake Johnston Project 120km west of Norseman.

Lefroy is pursuing a low-cost gold production strategy through profit share mining agreements on its shallow, high-grade gold deposits. The company's Lucky Strike Deposit with 79,600oz is subject to the first of such agreements, with mining underway and production on track for early 2026. Additional deposits Mt Martin (439,000oz at 1.47g/t Au) and Burns Central (159,285oz at 1.18g/t Au) offer additional potential for similar agreements and show significant resource growth potential through ongoing exploration.

With over one million ounces in resources and a zero-cost development pathway, LEX is well-positioned to generate cash flow and advance its broader portfolio.

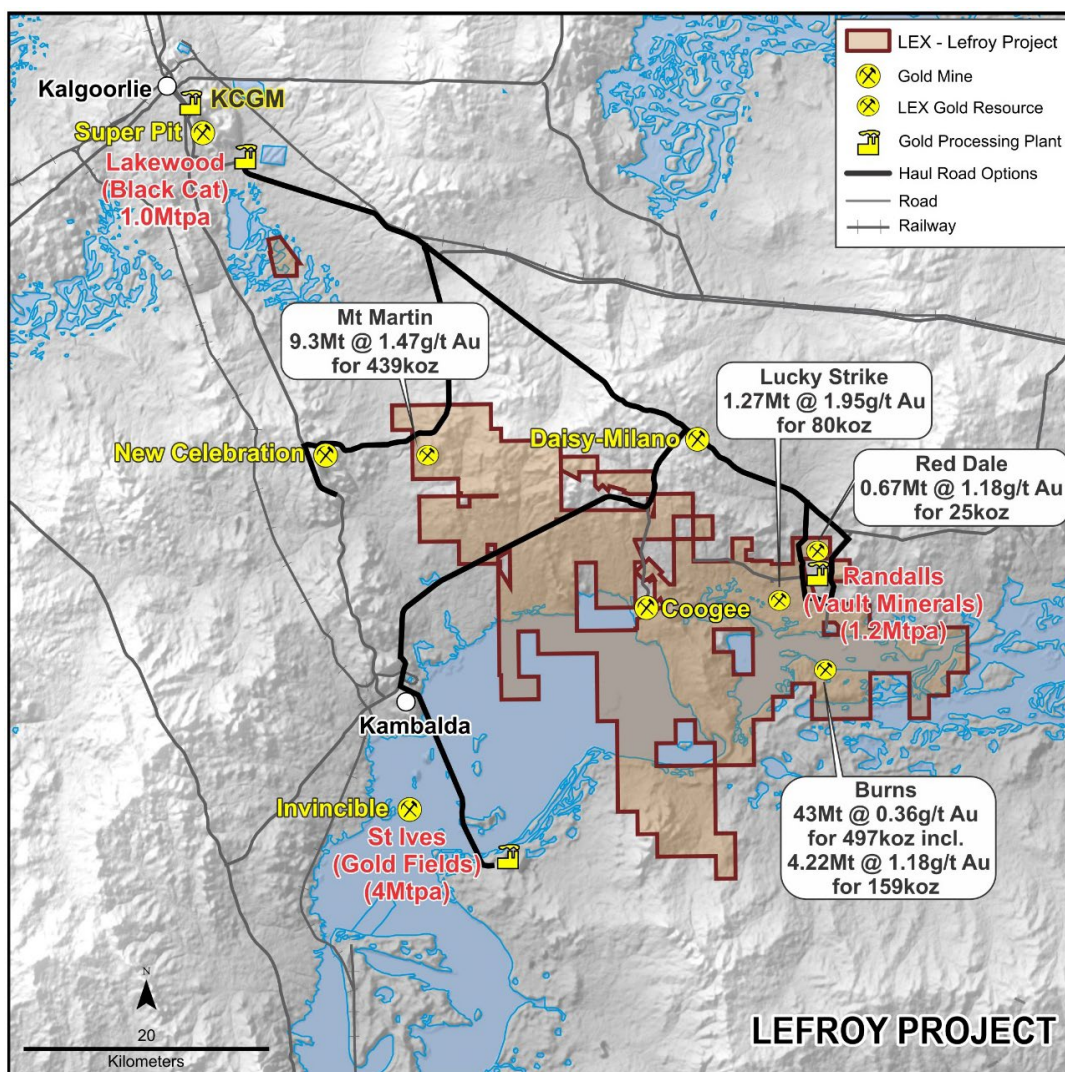


Figure 4: Regional location map of the Lefroy Project

SUPPORTING ASX ANNOUNCEMENTS

The following announcements were lodged with the ASX and further details (including supporting JORC Tables) for each of the sections noted in this announcement can be found in the following releases. The Company confirms that it is not aware of any new information or data that materially affects the information included in the original market announcements. In the case of all Mineral Resource Estimate's (MRE), the Company confirms that all material assumptions and technical parameters underpinning the estimates continue to apply and have not materially changed.

- Outstanding Results Reinforce Lucky Strike Potential: 26 February 2020
- Maiden Lucky Strike Resource Estimate: 20 May 2020
- Half a million ounces of gold in Burns Central maiden resource: 4 May 2023
- Strategy to focus on Gold Development and Exploration: 23 February 2024
- High Grade Shallow Resource to Unlock Value at Burns Central: 3 October 2024
- Lefroy builds near-surface gold resources at Mt Martin: 10 October 2024
- Lefroy signs Agreement with BML Ventures to advance development of the Lucky Strike gold deposit: 18 December 2024
- Lefroy executes Agreement with BML Ventures to mine the Lucky Strike gold deposit: 12 February 2025
- Drilling Underway at Lucky Strike Gold Project: 26 February 2025
- Major Grade Control drilling campaign commences at Luck Strike: 06 May 2025
- Exceptional grade control results as Diamond drilling commences at Lucky Strike: 03 June 2025
- Major Milestone as Lefroy Secures first Toll Milling agreement: 10 June 2025
- More High-Grade Results at Lucky Strike Gold Deposit: 24 June 2025
- Lefroy secures crucial funding via BML Lucky Strike Profit Cash Advance Agreement: 16 July 2025
- Lucky Strike Gold Deposit advances towards operations: 9 September 2025
- Lefroy receives first cash advance instalment of \$1.25 Million from BML: 30 September 2025
- Burns drilling targets near surface high-grade gold potential: 23 October 2025
- Lucky Strike Mine Approved clearing pathway for Operations to Commence: 5 November 2025
- Burns High-Grade Gold Deposit drilling underway: 11 November 2025
- Mining Commences at Lucky Strike Gold Deposit: 4 December 2025
- Resource extension drilling underway at Burns Gold Deposit: 9 December 2025
- Lefroy receives second cash advance instalment of \$0.75 Million from BML: 18 December 2025
- Strong start to mining at high-grade Lucky Strike Gold Mine: 23 December 2025
- Drilling confirms High-Grade gold zone at Burns Gold Deposit: 8 January 2026
- Mining of first ore panels underway at Lucky Strike Gold Deposit: 20 January 2026

COMPETENT PERSON STATEMENT

The information in this announcement that relates to exploration targets and exploration results is based on information compiled by Graeme Gribbin, a competent person who is a member of the Australian Institute of Geoscientists (AIG). Mr Gribbin is employed by Lefroy Exploration Limited. Mr Gribbin has sufficient experience that is relevant to the style of mineralisation and type of deposits under consideration and to the activity being undertaken to qualify as a Competent Person as defined in the 2012 edition of the JORC Code. Mr Gribbin consents to the inclusion in this announcement of the matters based on his work in the form and context in which it appears.

FORWARD LOOKING STATEMENTS

This announcement contains “forward-looking statements”. Forward-looking statements are often, but not always, identified by the use of words such as “seek”, “anticipate”, “believe”, “plan”, “expect”, “predict”, “forecast”, “estimate”, “target” and “intend” and statements that an event or result “should”, “could”, “may”, “will” or “might” occur or be achieved and other similar expressions. Forward-looking statements are subject to business, legal and economic risks and uncertainties and other factors that could cause actual results to differ materially from those contained in forward-looking statements. Forward-looking statements including estimates or projections as to events that may occur in the future (including projections of revenue, expense, net income and performance) are provided as a general guide only and should not be relied upon as an indication or guarantee of future performance and may or may not occur. The statements involve known and unknown risks, uncertainties and other factors associated with LEX and the mining exploration industry such as resource risk, environmental and regulatory risks, metals price volatility, currency fluctuations, increased production costs and variances in ore grade or recovery rates and operational risks. Many of risks these are beyond the control of LEX. It is believed that expectations reflected in the statements are reasonable but they may be affected by market conditions and a range of other variables which could cause actual results or trends to differ materially from those stated.

Table 1: Total Indicated and Inferred Mineral Resources (small discrepancies may occur due to the effect of rounding)

Orogenic Gold Style									
	Indicated			Inferred			Total Resource		
Deposit	Mt	Au (g/t)	Oz	Mt	Au (g/t)	Oz	Mt	Au (g/t)	Oz
Red Dale	0.64	1.21	24,660	0.03	0.60	570	0.67	1.18	25,230
Lucky Strike	0.70	1.93	43,400	0.57	1.97	36,200	1.27	1.95	79,600
Mt Martin	5.60	1.40	2.47,500	3.69	1.61	191,500	9.29	1.47	439,000
TOTAL	6.94	1.41	315,560	4.29	1.66	228,270	11.23	1.51	543,830

Porphyry Gold-Copper Style														
	Indicated					Inferred					Total Resource			
Deposit	Mt	Au (g/t)	Cu (%)	Au (Oz)	Cu (t)	Mt	Au (g/t)	Cu (%)	Au (Oz)	Cu (t)	Mt	Au (g/t)	Au (Oz)	Cu (t)
Burns Central	32.31	0.38	0.16	394,308	50,253	10.65	0.3	0.08	103,165	8,047	42.96	0.36	497,472	58,300
Total	32.31	0.38	0.16	394,308	50,253	10.65	0.3	0.08	103,165	8,047	42.96	0.36	497,472	58,300
Inclusive of														
Burns High Grade	4.11	1.19	0.22	157,215	9,119	0.1	0.63	0.18	2,070	184	4.22	1.18	159,285	9,303

Nickel									
	Indicated			Inferred			Total Resource		
Deposit	tonnes	Ni (%)	Ni metal	tonnes	Ni (%)	Ni metal	tonnes	Ni (%)	Ni metal
Goodyear	-	-	-	392,000	3.78	14,780	392,000	3.78	14,780
TOTAL	-	-	-	392,000	3.78	14,780	392,000	3.78	14,780