

Date 2nd April 2026

Gold Duke Project

Production Bore Drilling Commenced and Early Stage Site Establishment

Highlights:

- Drilling has commenced at the Bowerbird Prospect within the Gold Duke Project
- Bore replaces an existing production bore and will provide dedicated water supply for mining operations and dust suppression
- Groundwater extraction licence approval by the Department of Water and Environmental Regulation (DWER) is in place
- Early Stage of mobilisation has commenced with the delivery and installation of site offices
- Site offices to support current production bore drill programme as well as clearing and grubbing and next phase of site establishment
- Laydown area established to support drilling, mining and logistics for the project
- Represents first phase of “on-the-ground” activities for the Gold Duke Project

Managing Director Cullum Winn commented:

“The commencement of drilling at the Bowerbird production bore and installation of early site infrastructure represents the start of on-the-ground activities at our flagship Gold Duke Project. The bore and associated infrastructure are expected to provide a low-cost, reliable water supply, positioned close to the Stage 1 operational pits, supporting efficient project execution.”

For personal use only

Western Gold Resources Limited (ASX: WGR) (“WGR” or “the Company”) is pleased to advise that drilling of the **Bowerbird production bore** has commenced, alongside the delivery and installation of the early stage site establishment infrastructure, at its 100%-owned Gold Duke Project in Western Australia.

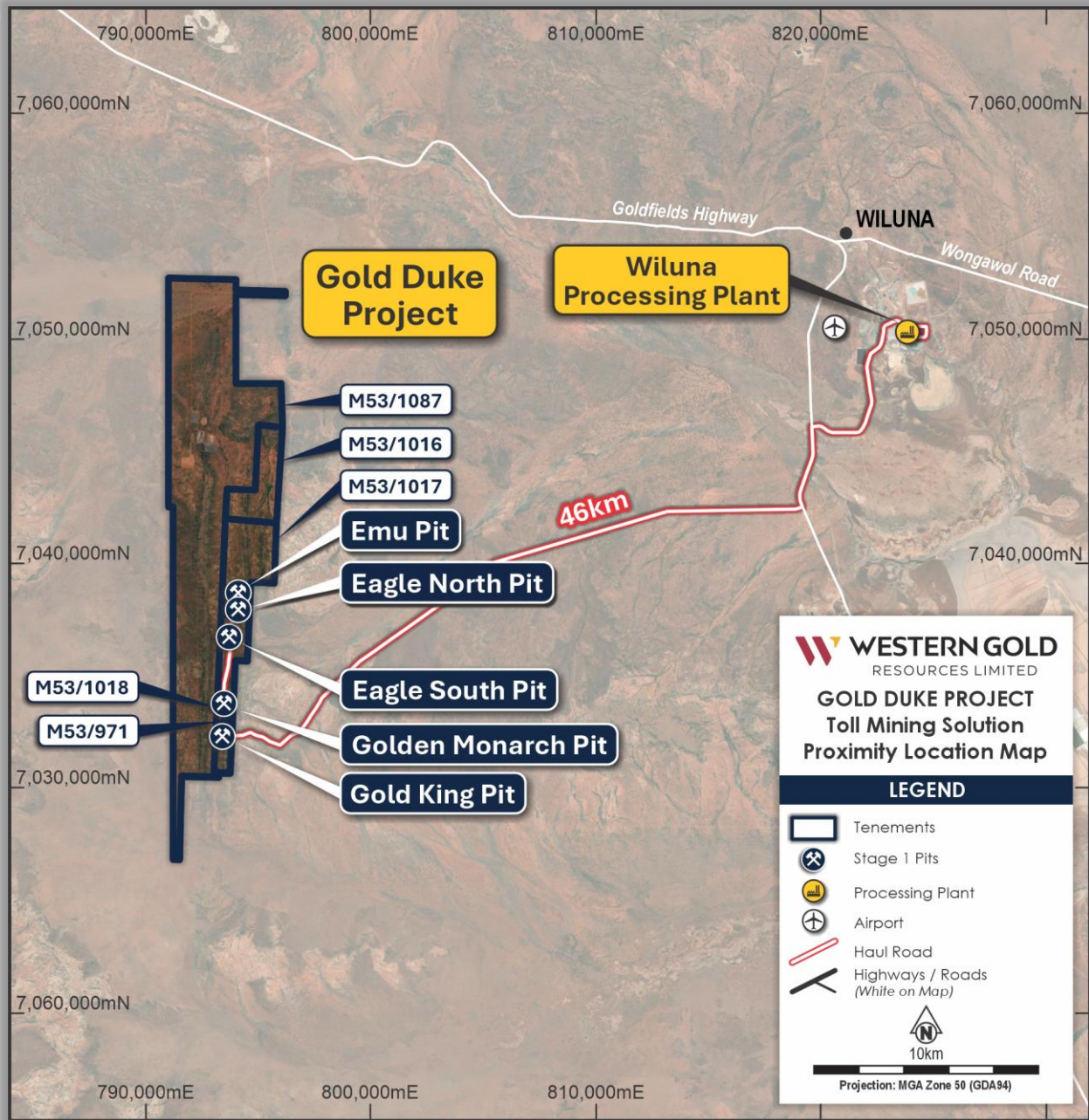


Figure 1: Gold Duke site layout, pit designs for the Eagle, Emu, Golden Monarch and Gold King deposits, and the haulage route to Wiluna Mining Corporation’s Milling facilities.

The commencement of bore drilling and establishment of early site infrastructure represent the start of on-the-ground activities for the Gold Duke Project, following the Company’s previously announced Decision to Mine².



Figure 2: Drilling commenced at the Bowerbird Production Bore within the Gold Duke Project.

The groundwater extraction licence (**GWL213331(1)**) associated with this production bore has been approved by the Department of Water and Environmental Regulation (**DWER**), following the Company's previously announced Pre Mining Works Letter of Award, DWER Approval and Mine Operator Appointed⁴.

Bowerbird Production Bore – Enabling Mining Operations

The Bowerbird production bore forms a key component of the **Gold Duke water management strategy**, providing a reliable and fit-for-purpose water supply to support:

- Dust suppression across all mining activities
- Haul road and ROM pad dust management
- General site operations and infrastructure requirements

The availability of a dedicated water source is fundamental to the safe and efficient execution of open pit mining activities, ensuring operational continuity and compliance with environmental and regulatory requirements.

Site Establishment and Operational Infrastructure

In parallel with bore drilling, the Company has commenced with the delivery and installation of site offices. This early infrastructure will support the current production bore drill programme as well as clearing and grubbing and next phase of site establishment.



Figure 3: Early Stage Mobilisation of Site Offices to the Gold Duke Project.

A dedicated laydown area has also been established to support the storage and staging of mining and support equipment, logistics coordination and material handling, as well as the efficient mobilisation of contractors and operational crews.

Together, these facilities provide the first phase of “on-the-ground” activities for the Gold Duke Project.

Advancing Toward Production

These milestones represent a significant step in the **progressive de-risking and development of the Gold Duke Project**, with multiple workstreams now advancing in parallel:

- Site establishment and mining mobilisation underway
- Water infrastructure development progressing, including Bowerbird bore drilling
- Haulage agreements and infrastructure access secured
- Grade control and Life of Mine (LOM) drilling programs supporting production readiness

Next Steps

Progress toward Stage 1 mining operations and first ore production

- Complete bore drilling, construction and commissioning.
- Undertake pump testing and confirm sustainable water supply.
- Integrate bore into **site water management system**.
- Continue mining mobilisation and contractor deployment.
- Clearing, grubbing and haul road construction activities.
- Commence mining and advance toward first gold production targeted for Q2 2026.
- Plan and execute Life of Mine (**LOM**) extensions to fast track expected addition ounces into the project³.

AUTHORISED FOR RELEASE BY THE COMPANY'S BOARD OF DIRECTORS

For further information contact:

Cullum Winn
Managing Director
E: cullumw@westerngoldresources.com.au

Gary Lyons
Chairman
E: gary@garylyons.com.au

Appendix 1

Previous ASX Announcements

1. ASX Announcement 18th March 2026 “Main Roads WA and Shire of Wiluna Grant Road User Access”
2. ASX Announcement 10th March 2026 “121 Mining Investment Conference Presentation - Gold Duke”
3. ASX Announcement 9th March 2026 “LOM Grade Control Drilling to Run Parallel with Mining”
4. ASX Announcement 9th February 2026 “Pre-mining Works Contract and Mine Operator Appointment”
5. ASX Announcement 24th December 2025 “Decision to Mine – Gold Duke Project”
6. ASX Announcement 9th March 2026 “LOM Grade Control Drilling to Run Parallel with Mining”
7. ASX Announcement 16th June 2025 “WGR Executes Binding Toll Milling Agreement for Gold Duke Project”
8. ASX Announcement 18th March 2026 “Main Roads WA and Shire of Wiluna Grant Road User Access”

For personal use only