

9 April 2026

## WELL SIX BMR POROSITY TESTS HIT 31% $S_y$ IN ZONE 7 FORMENTERA LITHIUM BRINE PROJECT, ARGENTINA

- The total porosity has an average across the entire 462m log of **22% and a maximum value of 39% which is outstanding!**
- The **specific yield** or  **$S_y$**  has an average of **8% and a maximum value of 31%**
- **Eight zones** were delineated after the borehole magnetic resonance and gamma logs were analysed to a depth of 462m.
- The Brine zone resistivity curve indicates that the eight brine zones are located below 88m. It has an average resistivity of **1.21 Ohm.m, low values compatible** with a lithium brine.
- **Production well** simulation shows the well has a theoretical capacity of 160,000 litres of brine per hour from an 8 inch well.

**Patagonia Lithium Ltd (ASX:PL3, Patagonia or Company)** is pleased to announce the completion of the BMR gamma survey measured with greater accuracy the exceptional porosity and deep aquifer encountered in wells six. Well six recorded a lithium concentration of 412ppm lithium.



Figure 1. Permanent magnet and antenna that are lowered into a borehole to record the response of the nuclear magnetisation associated with hydrogen nuclei in the pore fluids (e.g., groundwater) of the formation.

Phillip Thomas, Executive Chairman, commented “These BMR porosity results will have a **substantial implication for the Mineral Resource calculation update**. These results confirm the outstanding flow rates and lay the foundation for the production well hydrology. The  $S_y$  (specific yield) value is the drainable value which in well six was excellent.”

### Capital structure

207.1 - PL3 shares  
20.0m - unquoted options  
25.0m - unquoted performance rights

**Patagonia Lithium Ltd**  
Suite 66, 1<sup>st</sup> Floor, 2-4 Cochranes  
Road, Moorabbin, VIC 3189  
<https://patagonialithium.com.au/>

### Board

Phil Thomas - Exec Chair  
Rick Anthon - NED  
Pablo Tarantini - NED  
Jarek Kopias - Co Sec

For personal use only

**Eight-Zone Summary Table (Lithology, Avg. Total Porosity, Avg. Specific Yield)**

	Top (m)	Base (m)	average TPOR (V/V)	TPOR maximum (V/V)	SY average (V/V)	SY maximum (V/V)
ZONE 1	0	67	29%	38%	5%	19%
ZONE 2	67	82	33%	36%	7%	16%
ZONE 3	82	135	28%	39%	6%	31%
ZONE 4	135	204	27%	36%	12%	26%
ZONE 5	204	240	14%	30%	4%	22%
ZONE 6	240	273	20%	37%	6%	18%
ZONE 7	273	340	19%	34%	8%	20%
ZONE 8	340	462	18%	33%	8%	21%

Note: The values of the intervals marked with the **BMR quality flag** were not included in the calculation of the TPOR and SY averages.  
 Table 1. Table showing total porosity and specific yields in each zone.

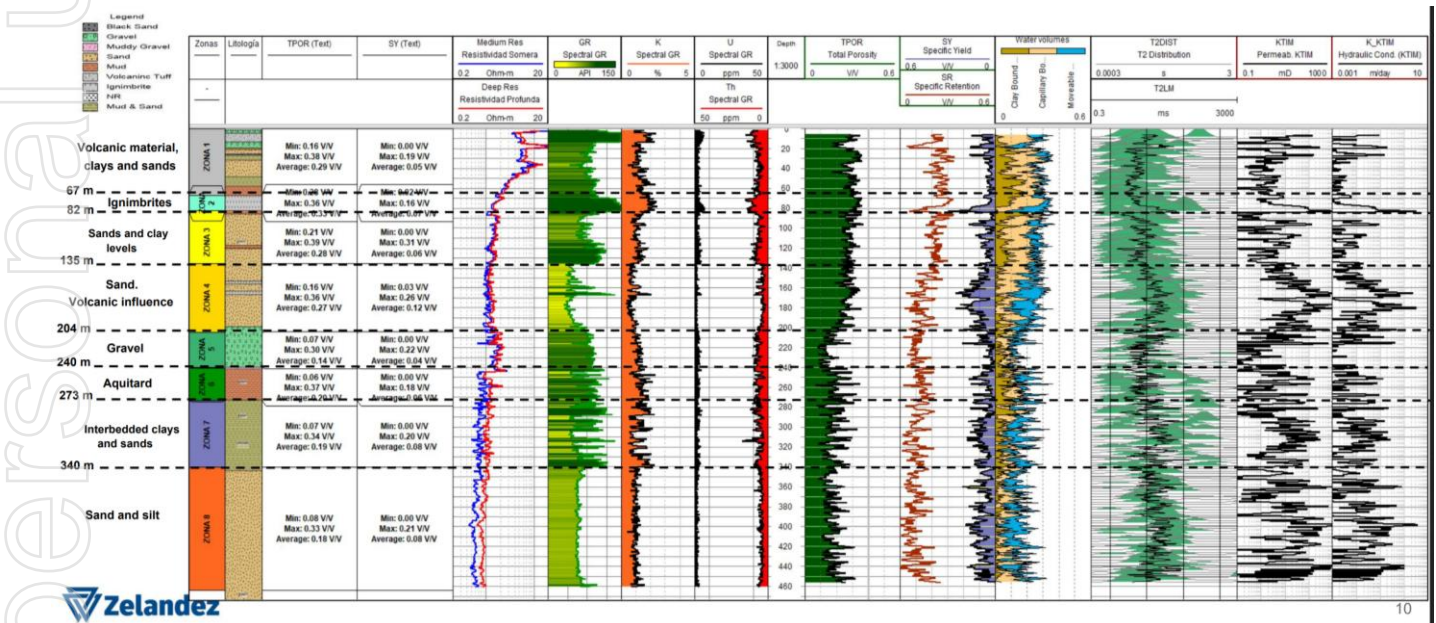


Figure 2. Graph showing zonation of lithologies and min, max and average total porosity and specific yield.

Set out above is a summary of the BMR test results from **well six**. Total porosity in dark green, with a range from 7-39%. Moveable water is very high (in aqua, with capillary in beige and clay in brown). Specific yield is the red line which is used in the MRE calculations.

The dark green lines on GR (Gamma) show the volcanic ignimbrites. Noticeably, they are absent from the sand and silt zone 8 (orange). This is interpreted as a series of volcanics in each layer holding lithium bearing rocks that have been leached and concentrated over the past 15 million years given the Cenozoic age of the deeper sub units.

**• Zone 3 (82 to 135 m depth)**

Area of sands and clay levels.

It has an average GR of 87°API.

The resistivity has an average of 1.54 Omh.m.

The average total porosity is 28%.

The specific performance or SY has an average of 6%.

**• Zone 4 (135 to 204 m depth)**

Area of sand, with volcanic influence.

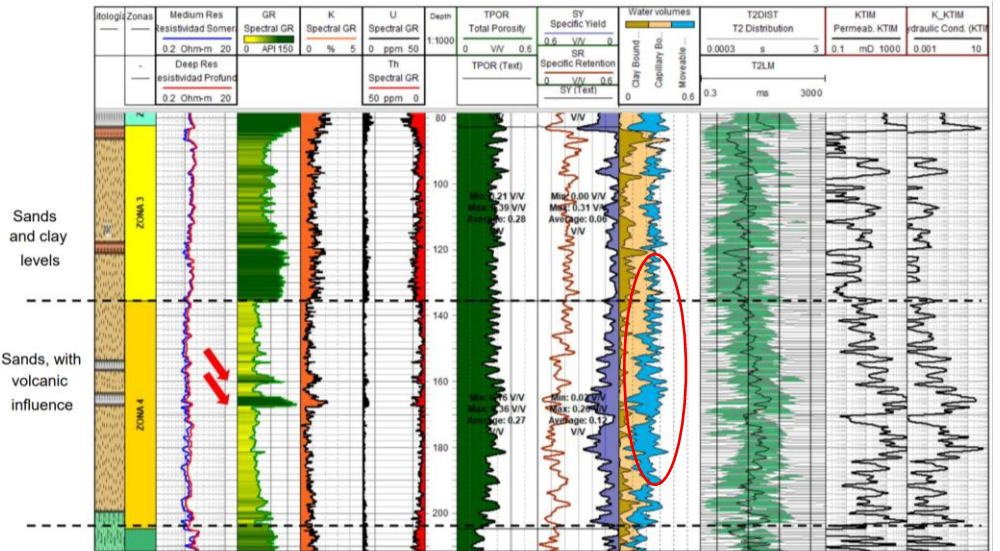
It has an average GR of 52°API.

The resistivity has an average of 1.30 Omh.m.

The average total porosity is 27%.

The specific yield or SY has an average of 12%. Zone 4 has the best SY values in the well.

The two GR peaks are marked, indicating the most prominent volcanic levels.



12

Figure 3. Shows zone 3 and 4, which would be where pumping would be initiated, with red circle showing highly porous zone also showing volcanics with red arrows.

**• Zone 7 (273 to 340 m depth)**

Zone of interbedded clays and sands.

It has an average GR of 82°API.

The resistivity has an average of 1.10 Omh.m.

The average total porosity is 19%.

The specific performance or SY has an average of 8%.

**• Zone 8 (340 to 462 m depth)**

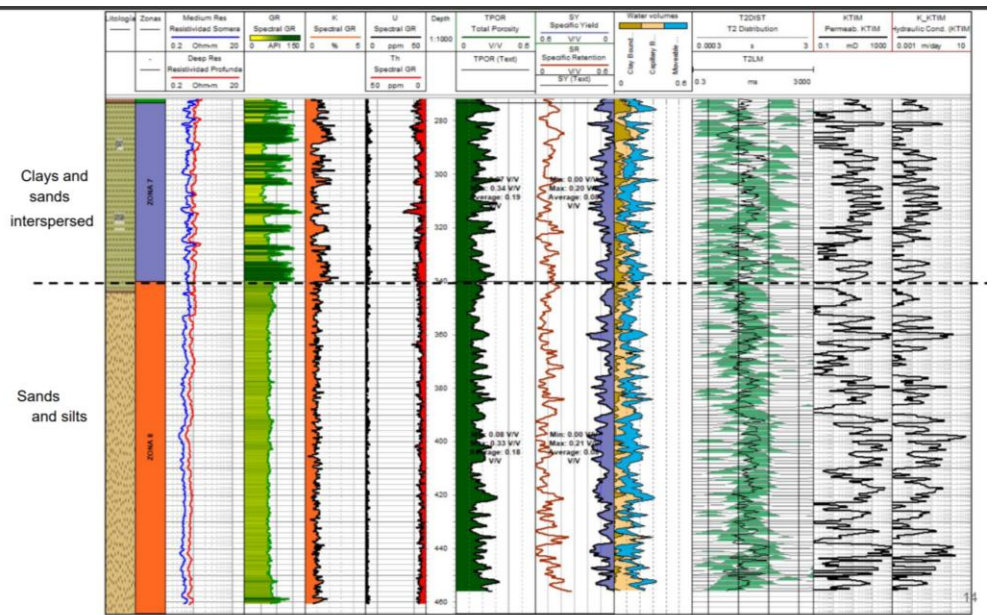
Area of sand and mud.

It has an average GR of 62°API. It exhibits a blocky and uniform pattern.

The resistivity has an average of 0.88 Omh.m.

The average total porosity is 18%.

The specific performance or SY has an average of 8%.



13

Figure 4, Shows the zones with 8% specific yield and 18.5% total porosity average making it highly attractive as a pumping zone.

The units are categorised as follows:

- Main aquifers: Zones 3, 4, 5, 8
- Leaky/transition units: Zones 1, 2, 7
- Aquitard/confining: Zone 6

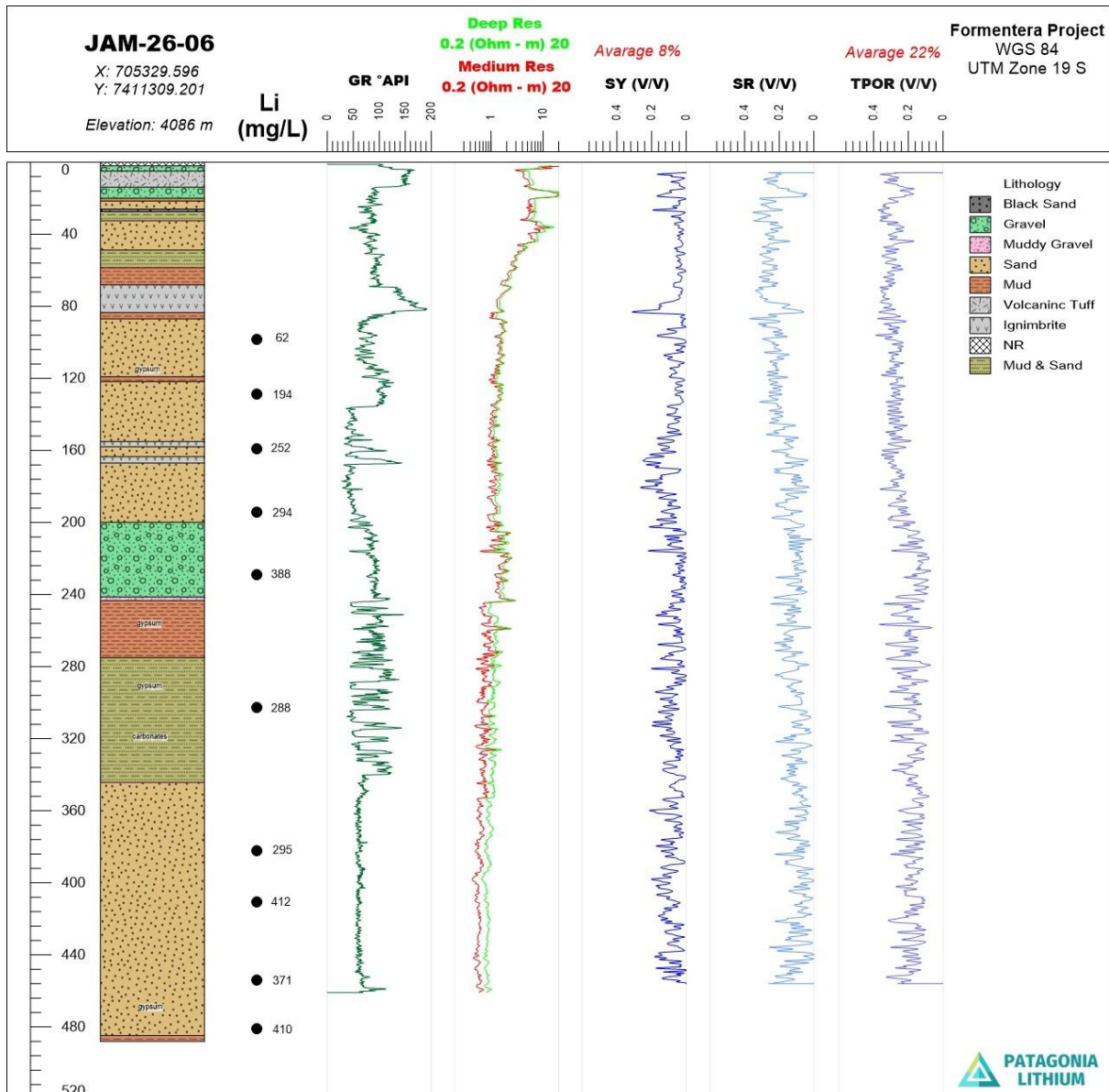


Figure 5. Schematic showing the lithium assays against lithology, total porosity and specific yield.

### Production Well Estimate with a 203mm (8 inch) diameter well.

The estimate of hourly pump rate using specific yield and total porosity data and segmenting the well into the 8 different lithology zones is set out below:

#### Well yield is a function of aquifer K + thickness

Well six intersects:

- **Layer 5 (Gravel)** - HK  $\approx$  20 m/day, thickness 36 m
- **Layer 4 (Sand)** - HK  $\approx$  3 m/day, thickness 69 m
- **Layer 8 (Sand/silt)** - HK  $\approx$  1.2 m/day, thickness 140 m

These are the **productive units** with a total depth of 400m.

The well diameter (8 inches = 0.203 m) impacts **well efficiency**, but **aquifer transmissivity (T)** controls the sustainable pumping rate.

**HK** stands for **Horizontal Hydraulic Conductivity**. It represents the ability of an aquifer material to transmit water horizontally, typically measured in units of length per time (m/hr) and is a key parameter in the Layer-Property Flow (LPF) and Block-Centered Flow (BCF) calculations.

### Compute transmissivity (T)

Using mid-range HK values:

Layer 4 – **207 m<sup>2</sup>/day**

Layer 5 – **720m<sup>2</sup>/day**

Layer 8 – **72m<sup>2</sup>/day** Assume Total Depth = 400 m → thickness = 60 m:

Total transmissivity is approximately 1000m<sup>3</sup>/day for well six.

**Conclusion:** This is a **strong aquifer** with a very high achievable pump rate.

**Sustainable pumping rate** (using Theim equation, confined) hypothetical calculations using:

- **T** = 1000 m<sup>2</sup>/day
- **Drawdown (s)** = 5 m allowable
- **Radius of influence (R)** = 300 m (typical basin)
- **Well radius (rw)** = 0.1015 m (8-inch)

Solving gives 3,930 m<sup>3</sup>/24 hours pump volume. This is approximately 160,000L/hr.

**Sustainable Well Yield (8-inch well):** 160,000 L/hour. This is **not peak yield** — this is a **sustainable, low-drawdown pumping rate** based on BMR Gamma actual aquifer parameters.

### Interpretation

An 8-inch well in this stratigraphy is **not the limiting factor**.

**Well six aquifer transmissivity is high enough** that:

- The well could physically deliver **>200,000 L/hr** with higher drawdown
- The aquifer in theory can **sustain ~160,000 L/hr** without long-term decline
- The gravel layer (Layer 5) is doing most of the work.

This is consistent with high-T basin-margin brine systems. We can simulate the diameter of the well to produce more than 27,000L/hour. If we drill 4 production wells approximately 300m apart which at our MRE average of 296ppm Lithium is all that is required for the demonstration plant name plate production of 1,000 tonnes lithium carbonate.

### Well JAM 26-06

(POSGAR 94 system / Strip 3):

N = 7411309.201, E = 705329.596. UTM

zone 19S

Dip: -90 degrees

Azimuth: 0 degrees.

Depth: – 488m

Collar Height: 4089m ABSL

Authorised for release by the Board of the Company. For further information please contact:

Phillip Thomas

Executive Chairman

Patagonia Lithium Ltd

M: +61 433 747 380

E: [phil@patagonialithium.com.au](mailto:phil@patagonialithium.com.au)

[www.patagonialithium.com.au](http://www.patagonialithium.com.au)

Our socials – [www.patagonialithium.com.au](http://www.patagonialithium.com.au) has update video section, x.com @pataLithium, Instagram, facebook, Tiktok, LinkedIn and Youtube.

[https://www.youtube.com/@Patagonia\\_Lithium](https://www.youtube.com/@Patagonia_Lithium)

[https://www.youtube.com/@Patagonia\\_Lithium/shorts](https://www.youtube.com/@Patagonia_Lithium/shorts)

### Competent Person Statement

The information in this announcement that relates to exploration results is based on, and fairly represents information compiled by Phillip Thomas, BSc Geol, MBM, MAIG FAusIMM, Technical Adviser to Patagonia Lithium Ltd and is Executive Chairman, who is a Fellow of the Australasian Institute of Mining and Metallurgy. Mr Thomas has sufficient experience relevant to the style of mineralisation and type of deposit under consideration, and to the activity which he has undertaken, to qualify as a Competent Person as defined in the 2012 Edition of the Joint Ore Reserves Committee (JORC) Australasian Code for Reporting of Exploration Results, Mineral Resources and Ore Reserves. Mr Thomas consents to the inclusion in this announcement of the matters based on this information in the form and context in which it appears.

The Company confirms it is not aware of any new information or data that materially affects the information cross referenced in this announcement and all material assumptions and technical parameters underpinning the MRE (lodged on 14 July 2025 as "Lithium Carbonate Mineral Resource increased by 319%") continue to apply and have not materially changed. The LCE MRE of 551,400t LCE @ 294mg/L is comprised of 14,800t LCE @ 393mg/L Indicated MRE and 536,600t LCE @ 292mg/L Inferred MRE. The Company confirms that the form and context in which the Competent Person's findings are presented have not been materially modified from the original announcements.

Other cross referenced ASX releases "Formentera Lithium Drilling Update" on 2 December 2025, "Formentera Lithium Drilling Update" on 6 January 2026 and "Formentera Lithium Drilling Update" on 15 January 2026.

### ABOUT PATAGONIA LITHIUM LTD

Patagonia Lithium has **two major lithium brine projects** – Formentera/Cilon in Salar de Jama, Jujuy province covering 19,500 has and Tomas III at Incahuasi Salar covering 580 Has in Salta Province of northern Argentina in the declared lithium triangle. In Brazil the Company has been granted five exploration concession packages **41,746 ha** of concessions where the company is exploring for **ionic REE clays, Niobium, Antimony and Lithium in pegmatites**. The Company has staked next door to the largest Niobium producer (CMOC) in Brazil in Goiás state with 10,024 tonnes per annum of Niobium production.


Since listing on 31 March 2023, surface sampling and MT geophysics have been completed, drill holes JAM-24-01, JAM-24-02, JAM-24-03 and JAM-24-04 completed. Progress to date has been exceptional as measured by lithium assays and pump tests. The MT Geophysics at Tomas III on Incahuasi salar is very prospective. In July 2023, a 10 drill hole drill program was approved for Formentera and a three drill hole program for Cilon. Samples as **high as 1,122 ppm Li** (2 June 2023 announcement) were recorded at Formentera and a Lithium value of **591 ppm in drill hole JAM-24-01** (Outstanding Assay Results from First Drilling in Argentina released on 3 May 2024). Very low resistivities were recorded to more than 1 km depth during the MT Geophysics survey at Formentera. On 14 July 2025 an upgraded Mineral Resource Estimate was released with **551,000 tonnes LCE**.

**JORC Code, 2012 Edition – Table 1 JAM 26-06 WELL SIX**  
**Section 1 Sampling Techniques and Data**

Criteria	JORC Code explanation	Commentary
Sampling techniques	<ul style="list-style-type: none"> <li>Nature and quality of sampling (eg cut channels, random chips, or specific specialised industry standard measurement tools appropriate to the minerals under investigation, such as down hole gamma sondes, or handheld XRF instruments, etc). These examples should not be taken as limiting the broad meaning of sampling.</li> <li>Include reference to measures taken to ensure sample representivity and the appropriate calibration of any measurement tools or systems used.</li> <li>Aspects of the determination of mineralisation that are Material to the Public Report.</li> <li>In cases where 'industry standard' work has been done this would be relatively simple (eg 'reverse circulation drilling was used to obtain 1 m samples from which 3 kg was pulverised to produce a 30 g charge for fire assay'). In other cases more explanation may be required, such as where there is coarse gold that has inherent sampling problems. Unusual commodities or mineralisation types (eg submarine nodules) may warrant disclosure of detailed information</li> </ul>	<ul style="list-style-type: none"> <li>A Boart Longyear LT190 drilling machine drilling using HQ3 diameter was used to drill to 488m. The core recovery was greater than 95%. A tri-cone head drilling 6 inch diameter was used from collar to 30m and lined with PVC.</li> <li>21 11,000 litre tanks were filled during the pumping exercise and two samples were taken from tank 15.</li> <li>The samples from well JAM 26-06 were tested for conductivity and specific gravity and were sent for assay at two Laboratories Alex Stewart and SGS.SGS results are yet to be received.</li> <li>A distilled water sample and a lithium standard sample C 3001 (400ppm) was supplied for analysis to Alex Stewart and SGS labs.</li> <li>Samples were tested on-site for conductance in micro siemens with a Hanna multi meter. The meter was calibrated prior to use with fresh standards. It has a maximum value of 200 ms.</li> <li>Sediments were logged for fineness and clay content. No target minerals were encountered such as lithium carbonate or lithium chloride crystals. Gypsum and carbonate crystals at depth were noted.</li> <li>Well JAM 26-06 was drilled vertically and has an azimuth of zero.</li> <li>A Hanna Multi tester was used to measure pH, conductivity, SG and temperature for comparison purposes.</li> <li>A Pumping test was conducted over a 72 hour period using a 38m hose and 5.4m<sup>3</sup>/hour pump. The results are reported in this release.</li> <li>Assay results were released in ASX press release 24 March 26 "Formentera Well Six Lithium Assay of 412ppm"</li> </ul>
Drilling techniques	<ul style="list-style-type: none"> <li>Drill type (eg core, reverse circulation, open- hole hammer, rotary air blast, auger, Bangka, sonic, etc) and details (eg core diameter, triple or standard tube, depth of diamond tails, face-sampling bit or other type, whether core is oriented and if so, by what method, etc).</li> </ul>	<ul style="list-style-type: none"> <li>An 83mm bit (HQ3) was used with triple tube to drill the well and 3 metre long rods. A packer tool was lowered and samples taken at the nominated intervals of 30m from approximately 98m.</li> <li>The well was reamed out with a 61/4inch tricone to put in 4inch slotted PVC pipe.</li> </ul>
Drill sample recovery	<ul style="list-style-type: none"> <li>Method of recording and assessing core and chip sample recoveries and results assessed.</li> <li>Measures taken to maximise sample recovery and ensure representative nature of the samples.</li> </ul>	<ul style="list-style-type: none"> <li>Brine samples were collected at each point relative to the porosity of the lithological unit intercepted and flow of brines when core was extracted. One company A brine sample was taken and stored, and two B</li> </ul>

For personal use only

Criteria	JORC Code explanation	Commentary
	<ul style="list-style-type: none"> <li>Whether a relationship exists between sample recovery and grade and whether sample bias may have occurred due to preferential loss/gain of fine/coarse material.</li> </ul>	<ul style="list-style-type: none"> <li>samples stored securely prior to sending to the labs under chain of custody.</li> <li>Brine lithium assay values are not related to the quality of core samples. The porosity, transmissivity and permeability of the lithologies where samples are taken influences the rate of brine inflow and brine characteristics.</li> <li>Drilling is required to determine the flow characteristics of the intersected aquifers, whereas interpolated ICP-OES lithium analysis tests are required for lithium concentrations from the brine samples.</li> </ul>
Logging	<p>Whether core and chip samples have been geologically and geotechnically logged to a level of detail to support appropriate Mineral Resource estimation, mining studies and metallurgical studies.</p> <ul style="list-style-type: none"> <li>Whether logging is qualitative or quantitative in nature. Core (or costean, channel, etc) photography.</li> <li>The total length and percentage of the relevant intersections logged.</li> </ul>	<ul style="list-style-type: none"> <li>All core was logged by two geologists including PL3 senior geologist.</li> <li>The sediments were analysed for grain size where they were sands, consolidated and unconsolidated clays, gravel and conglomerate units and the lower conglomerate/gravel units. (refer core photos).</li> <li>95%-100% of the core was retrieved from each 3m drill core and logged. Only minor amounts of core were lost to brine flow in unconsolidated sediments in some intervals.</li> </ul>
Sub-sampling techniques and sample preparation	<ul style="list-style-type: none"> <li>If core, whether cut or sawn and whether quarter, half or all core taken.</li> <li>If non-core, whether riffled, tube sampled, rotary split, etc and whether sampled wet or dry.</li> <li>For all sample types, the nature, quality and appropriateness of the sample preparation technique.</li> <li>Quality control procedures adopted for all sub-sampling stages to maximise representivity of samples.</li> <li>Measures taken to ensure that the sampling is representative of the in situ material collected, including for instance results for field duplicate/second-half sampling.</li> <li>Whether sample sizes are appropriate to the grain size of the material being sampled.</li> </ul>	<ul style="list-style-type: none"> <li>Brine assay samples were collected by sampling the packer airlift of brine which was approximately 150 litres per lift and bottles A and B were filled from each lift with the objective of getting the brine sample (a 10L bottle decanted into one litre bottles) from the same aquifer interval in the well to avoid sampling systemic error.</li> <li>Duplicate sampling is undertaken for quality control purposes and a blank (distilled water and two standards were inserted with the samples making 5 in total). The lithium standard was A3001 – 400ppm lithium in solution.</li> <li>Brine samples from the packer test were sent for assay. They are an average of the sampled aquifer flow.</li> </ul>
	<ul style="list-style-type: none"> <li>The nature, quality and appropriateness of the assaying and laboratory procedures used and whether the technique is considered partial or total.</li> <li>For geophysical tools, spectrometers, handheld XRF instruments, etc, the parameters used in determining the analysis including instrument make and model, reading times, calibrations factors applied and their derivation, etc.</li> </ul>	<ul style="list-style-type: none"> <li>The SGS laboratory will be used for comparison analyses for QA/QC purposes and is also certified for ISO/IEC Standard 17025:2017. Alex Stewart is also certified for ISO/IEC Standard 17025:2017.</li> <li>Security control was kept with each bottle being taped closed (see photos) and contained in a locked chest which will be opened by SGS staff/Alex Stewart staff on delivery as part of the chain of custody protocol.</li> </ul>

Criteria	JORC Code explanation	Commentary
	<ul style="list-style-type: none"> <li>Nature of quality control procedures adopted (eg standards, blanks, duplicates, external laboratory checks) and whether acceptable levels of accuracy (ie lack of bias) and precision have been established.</li> </ul>	
<p>Verification of sampling and assaying</p>	<ul style="list-style-type: none"> <li>The verification of significant intersections by either independent or alternative company personnel.</li> <li>The use of twinned holes.</li> <li>Documentation of primary data, data entry procedures, data verification, data storage (physical and electronic) protocols.</li> <li>Discuss any adjustment to assay data.</li> </ul>	<ul style="list-style-type: none"> <li>Field duplicates, standards and blanks are used to monitor potential contamination of samples and the repeatability of analyses.</li> <li>It must be noted that each assay sample is a function of being averaged as approximately 150L of brine is extracted from the 5metre interval and then sampled in a 10L lot to get an average of the 150L extracted in the packer test.</li> </ul>
<p>Location of data points</p>	<ul style="list-style-type: none"> <li>Accuracy and quality of surveys used to locate drill holes (collar and down-hole surveys), trenches, mine workings and other locations used in Mineral Resource estimation.</li> <li>Specification of the grid system used.</li> <li>Quality and adequacy of topographic control.</li> </ul>	<ul style="list-style-type: none"> <li>The survey locations were located using handheld GPS with an accuracy of +/- 5m.</li> <li>Other well locations have been surveyed using satellite with ground check points as reference.</li> <li>The grid System used is POSGAR 94, Argentina Zone 3.</li> <li>Topographic control was obtained by handheld GPS.</li> <li>Most of the topography is flat although we have a surveyed topographic map of the concessions.</li> <li>The drill hole will be surveyed by a registered surveyor.</li> </ul>
<p>Data spacing and distribution</p>	<ul style="list-style-type: none"> <li>Data spacing for reporting of Exploration Results.</li> <li>Whether the data spacing and distribution is sufficient to establish the degree of geological and grade continuity appropriate for the Mineral Resource and Ore Reserve estimation procedure(s) and classifications applied.</li> <li>Whether sample compositing has been applied.</li> </ul>	<ul style="list-style-type: none"> <li>Brine samples are collected within the hole based upon the depth required to access brines.</li> <li>This well is within 800m of JAM 24-03. Block modelling will be used to estimate a resource estimate given the basin contains flat lying sediments and can be consistent up to 1km apart. The domains have been segregated into three types in previous resource estimate work (WSP July 2025).</li> </ul>
<p>Orientation of data in relation to geological structure</p>	<ul style="list-style-type: none"> <li>Whether the orientation of sampling achieves unbiased sampling of possible structures and the extent to which this is known, considering the deposit type.</li> <li>If the relationship between the drilling orientation and the orientation of key mineralised structures is considered to have introduced a sampling bias, this should be assessed and reported if material.</li> </ul>	<ul style="list-style-type: none"> <li>The brine concentrations being explored for generally occur as horizontal layers and lenses hosted by conglomerate, sand, halites, silt and/or clay with gypsum and carbonates present. Vertical diamond drilling is ideal for understanding this horizontal orientated stratigraphy and the nature of the sub-surface brine bearing aquifers.</li> <li>Surface sampling of brines allows us to determine the presence of lithium and</li> </ul>

Criteria	JORC Code explanation	Commentary
		<p>other minerals such as boron and presence of anions eg. Ca, (gypsum) ,Mg.</p> <ul style="list-style-type: none"> <li>• The orientation was vertical for the drill, but brine was sampled not sediments.</li> </ul>
<p><i>Sample security</i></p>	<ul style="list-style-type: none"> <li>• <i>The measures are taken to ensure sample security.</i></li> </ul>	<ul style="list-style-type: none"> <li>• Data was recorded and processed by employees, consultants and contractors to the Company and overseen by senior management on-site.</li> <li>• Samples were transported from the drill site to secure storage at the camp on a daily basis.</li> <li>• Samples were then couriered by the senior Geologist to the laboratory on her shift rotation.</li> <li>• Samples are secured and videoed onsite being bottled and then tape and the tape marked to prevent tampering prior to being analysed at the laboratory.</li> </ul>
<p><i>Audits or reviews</i></p>	<ul style="list-style-type: none"> <li>• <i>The results of any audits or reviews of sampling techniques and data.</i></li> </ul>	<ul style="list-style-type: none"> <li>• Samples from JAM 26-06 were sent to two laboratories and the comparison of the results with each other and with the standard. The sampling is at a very early stage however the Company's independent consultant and Competent Person has approved the procedures to date. The CP inspected the SGS and Alex Stewart laboratories on 6 May 2024 to ensure the laboratory contamination is non-existent and discuss and audit handling procedures with the staff.</li> </ul>

## Section 2 Reporting of Exploration Results

(Criteria listed in the preceding section also apply to this section.)

Criteria	JORC Code explanation	Commentary
Mineral tenement and land tenure status	<ul style="list-style-type: none"> <li>Type, reference name/number, location and ownership including agreements or material issues with third parties such as joint ventures, partnerships, overriding royalties, native title interests, historical sites, wilderness or national park and environmental settings.</li> <li>The security of the tenure held at the time of reporting along with any known impediments to obtaining a licence to operate in the area.</li> </ul>	<ul style="list-style-type: none"> <li>The Formentera/Cilon Lithium Project consists of two tenements located in Jujuy Province, Argentina. The tenement is owned by Patagonia Lithium SA. The Company executed a purchase agreement on 18 December 2022 and paid for it on 19 December 2022.</li> </ul>
Exploration done by other parties	<ul style="list-style-type: none"> <li>Acknowledgment and appraisal of exploration by other parties.</li> </ul>	<ul style="list-style-type: none"> <li>No historical exploration has been undertaken on this licence area.</li> <li>The Cilon concession area has been operated as a borate mine in the past although details of production records have not been available.</li> <li>The application for the drilling permit has passed all the necessary environmental stages and has been issued.</li> </ul>
Geology	<ul style="list-style-type: none"> <li>Deposit type, geological setting and style of mineralisation.</li> </ul>	<ul style="list-style-type: none"> <li>The Formentera/Cilon licence area covers most of the salar proper with minor alluvial cover to the southwest. The lithium concentrated brine is at depth 50-500m from MT geophysics sourced data and lithium occurs locally in brines from hot fluids passing through lithium minerals (volcanics) and altered intrusives and is concentrated in brines hosted within basin alluvial sediments and evaporites.</li> </ul>
Drill hole Information	<ul style="list-style-type: none"> <li>A summary of all information material to the understanding of the exploration results including a tabulation of the following information for all Material drill holes: <ul style="list-style-type: none"> <li>easting and northing of the drill hole collar</li> <li>elevation or RL (Reduced Level – elevation above sea level in metres) of the drill hole collar</li> <li>dip and azimuth of the hole</li> <li>down hole length and interception depth</li> <li>hole length</li> <li>If the exclusion of this information is justified on the basis that the information is not Material and this exclusion does not detract from the understanding of the report, the Competent Person should clearly explain why this is the case</li> </ul> </li> </ul>	<p>Well JAM 26-06 (POSGAR 94 system / Strip 3): N = 7411309.201, E = 705329.596. UTM zone 19S Dip: -90 degrees Azimuth: 0 degrees. Depth: – 488m Collar Height: 4089m ABSL</p>
Data aggregation methods	<ul style="list-style-type: none"> <li>In reporting Exploration Results, weighting averaging techniques, maximum and/or</li> </ul>	<ul style="list-style-type: none"> <li>Assay results will be analysed by SGS /Alex Stewart method using ICP-OES and</li> </ul>

Criteria	JORC Code explanation	Commentary
	<p><i>minimum grade truncations (eg cutting of high grades) and cut-off grades are usually Material and should be stated.</i></p> <ul style="list-style-type: none"> <li>• <i>Where aggregate intercepts incorporate short lengths of high grade results and longer lengths of low grade results, the procedure used for such aggregation should be stated and some typical examples of such aggregations should be shown in detail.</i></li> <li>• <i>The assumptions used for any reporting of metal equivalent values should be clearly stated.</i></li> </ul>	<p>interpolation to correct for errors. Measurements will be taken from each brine sample and averaged. Lithium values will be reported in ppm or mg/L.</p>
<i>Relationship between mineralisation widths and intercept lengths</i>	<ul style="list-style-type: none"> <li>• <i>These relationships are particularly important in the reporting of Exploration Results.</i></li> <li>• <i>If the geometry of the mineralisation with respect to the drill hole angle is known, its nature should be reported.</i></li> <li>• <i>If it is not known and only the down hole lengths are reported, there should be a clear statement to this effect (eg ‘down hole length, true width not known’).</i></li> </ul>	<ul style="list-style-type: none"> <li>• The brine layers are horizontal to sub-horizontal therefore the intercepted thicknesses of brine layers would be true thickness as the sample hole is vertical.</li> <li>• The brine flowed from the walls of the hole in a section accessed by the packer tube over 5m so the intercept width is variable depending on the porosity and transmissivity of the surrounding sands and clays and where it is located in the lithological unit.</li> </ul>
<i>Diagrams</i>	<ul style="list-style-type: none"> <li>• <i>Appropriate maps and sections (with scales) and tabulations of intercepts should be included for any significant discovery being reported These should include, but not be limited to a plan view of drill hole collar locations and appropriate sectional views.</i></li> </ul>	<ul style="list-style-type: none"> <li>• Refer to maps in figure 3.</li> </ul>
<i>Balanced reporting</i>	<ul style="list-style-type: none"> <li>• <i>Where comprehensive reporting of all Exploration Results is not practicable, representative reporting of both low and high grades and/or widths should be practiced to avoid misleading reporting of Exploration Results.</i></li> </ul>	<ul style="list-style-type: none"> <li>• All assay results will be reported as received from the laboratory.</li> <li>• The laboratory will provided a single value for each one litre bottle of brine taken from each of the ten packer tests.</li> </ul>
<i>Other substantive exploration data</i>	<ul style="list-style-type: none"> <li>• <i>Other exploration data, if meaningful and material, should be reported including (but not limited to): geological observations; geophysical survey results; geochemical survey results; bulk samples – size and method of treatment; metallurgical test results; bulk density, groundwater, geotechnical and rock characteristics; potential deleterious or contaminating substances.</i></li> </ul>	<ul style="list-style-type: none"> <li>• All meaningful and material information is reported.</li> </ul>
<i>Further work</i>	<ul style="list-style-type: none"> <li>• <i>The nature and scale of planned further work (eg; tests for lateral extensions or depth extensions or large-scale step-out drilling).</i></li> <li>• <i>Diagrams clearly highlighting the areas of possible extensions, including the main geological interpretations and future drilling areas, provided this information is not commercially sensitive.</i></li> </ul>	<ul style="list-style-type: none"> <li>• A seismic survey, a BMR gamma porosity survey and assays from well JAM 26-07 are proposed before a Mineral Resource Estimate update is computed in this stage. Refer map on Figure 3 for future drill locations.</li> </ul>