

# CONSTRUCTION NEARING COMPLETION WITH FULLY SECURED OFFTAKE AND CLEAR PATH TO FIRST REVENUE

## HIGHLIGHTS

- Construction of the commercial-scale Direct Lithium Extraction (DLE) facility is nearing completion. With building interior expected to be finalised in Q2 2026.
- Equipment installation scheduled for Q2-Q3 2026, with commissioning targeted for Q4 2026.
- This builds on key enabling infrastructure already completed, including production and disposal wells, as well as installation of powerlines and transformer.<sup>(1)(2)</sup>
- 100% of phase 1 production (150 TPA LCE) secured under binding offtake with Hydro Lithium<sup>(3)</sup>.
- Lithium produced will be processed under the Company's offtake with Hydro Lithium, converted into battery-grade material, and sold to battery material manufacturers in Asia.<sup>(3)</sup>
- ~AU\$10M strategic equipment contribution reduces upfront capital requirements.
- Phase 1 establishes commercial scale proof of concept with a clear expansion path at 1:1 scale.
- Positioned to become a leading North American lithium brine producer supplying global battery markets.

### Prairie Lithium Managing Director, Paul Lloyd, commented:

*"This update marks a critical step as we execute the construction that prepares us for commissioning and first production. With the DLE facility nearing completion and equipment installation scheduled in the coming months, Prairie Lithium is firmly on track to deliver first production in Q4 2026.*

*Importantly, 100% of Phase 1 production is secured under a binding offtake agreement, providing revenue visibility, and reducing project risk. The ~\$10 million strategic contribution from Hydro Lithium further lowers capital requirements and strengthens our development model.*

*We believe Prairie Lithium is well positioned to become one of the first lithium brine producers in North America, supplying a rapidly growing global market. Beyond Phase 1, our scalable strategy provides a clear pathway to expand production and deliver long term value."*

**Prairie Limited (ASX: PL9 OTC: PLIXF) ("Prairie Lithium", "PL9" or "the Company")**, a company focused on the sustainable development of the Prairie Lithium Project ("Prairie"), is pleased to announce that construction of the building to house its commercial-scale Direct Lithium Extraction (DLE) unit is nearing completion, marking a key milestone toward first production.

The building interior is on track to be completed in Q2 2026. Enabling installation of production equipment in Q2-Q3 2026. Following installation, commissioning production is planned for Q4 2026.

This follows the successful completion of key enabling infrastructure, including:

- Drilling of production and disposal wells

<sup>1</sup> ASX Release – "MULTI-PAD LITHIUM DRILLING PROGRAM COMPLETED AT PRAIRIE" 19 NOVEMBER 2024

<sup>2</sup> ASX Release – "CONSTRUCTION OF POWER INFRASTRUCTURE FOR PRAIRIE PROJECT" 4 FEBRUARY 2026

<sup>3</sup> ASX Release – "BINDING OFFTAKE SECURED FOR 100% OF PHASE 1 PRODUCTION WITH ~AU\$10M STRATEGIC COLLABORATION AND DEFINITIVE OFFTAKE" – 2 APRIL 2026



- Installation of power lines and transformers
- Completion of major structural works

These milestones collectively position Prairie Lithium on a clear and accelerated pathway toward first production.

Link to video of construction work is here: [Prairie Lithium Facility Construction - Roof](#)



Figure 1: Aerial view of the facility during construction

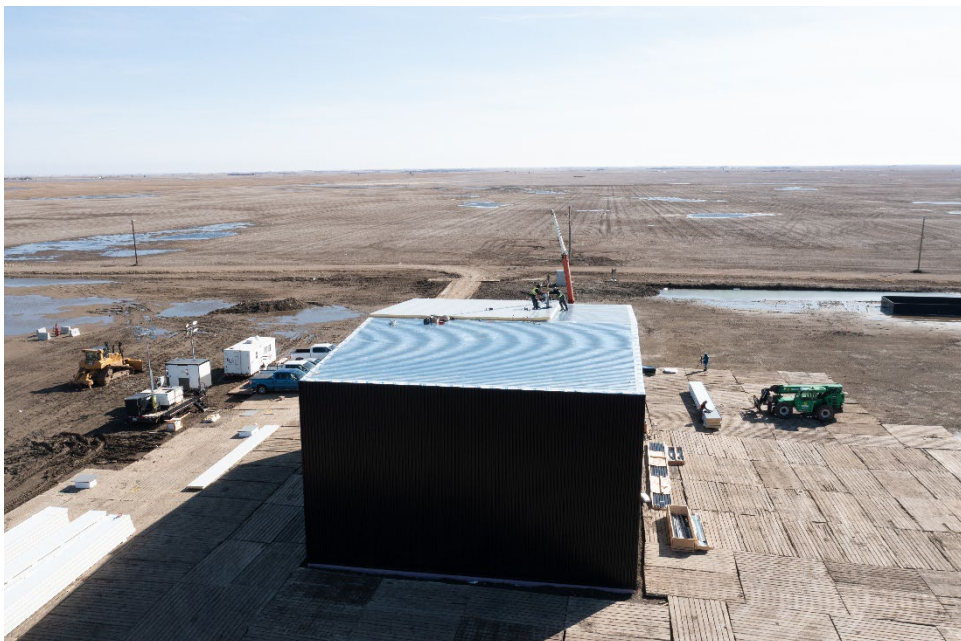


Figure 2: Aerial view of the facility during construction



Figure 3: Aerial view of the facility during construction

### Fully De-risked Path to Initial Revenue

Importantly, 100% of Phase 1 production has been secured under a binding offtake agreement with South Korea's Hydro Lithium providing revenue visibility from first production.

Under the agreement

- Hydro Lithium will purchase the entire Phase 1 output (150 TPA LCE<sup>(4)</sup>).
- Hydro Lithium will supply and operate ~\$10M of proprietary refining equipment.
- Product will be converted into battery-grade lithium and sold into established Asian battery supply chains.

This structure materially de-risks the project through:

- Secured demand
- Reduced capital intensity
- Access to downstream processing capability

### Strategic Positioning in Global Lithium Supply Chain

Prairie Lithium is emerging at a critical time in the global energy transition, with lithium demand continuing to grow rapidly due to electrification, EV adoption and energy storage expansion.

The Project is strategically positioned to:

- Supply lithium into North American and Asian battery markets
- Support diversification of global lithium supply chains
- Leverage strong government support across Canada and South Korea

The Project is located in Saskatchewan, one of the world's most mining friendly jurisdictions, with access to established oil and gas infrastructure, enabling faster and more cost-efficient development.

4 ASX Release – "NORTH AMERICA'S FIRST LITHIUM BRINE FACILITY" – 17 FEBRUARY 2025. THE COMPANY CONFIRMS THAT IT IS NOT AWARE OF ANY NEW INFORMATION THAT MATERIALLY AFFECTS THE INFORMATION INCLUDED IN THE ORIGINAL MARKET ANNOUNCEMENT AND THAT ALL MATERIAL ASSUMPTIONS AND TECHNICAL PARAMETERS UNDERPINNING ESTIMATES IN THE RELEVANT MARKET ANNOUNCEMENT CONTINUE TO APPLY AND HAVE NOT CHANGED.

## Scalable Development Model with Significant Upside

Phase 1 represents a 1:1 commercial scale proof of concept, with Prairie Lithium targeting expansion through a repeatable pad by pad development model.

Key growth drivers include:

- Large 4.6 million tonne LCE resource<sup>5</sup> base
- Ability to replicate production across multiple pads
- Potential to expand offtake volumes with Hydro Lithium
- Increasing global demand for secure, low impact lithium supply

This scalable model provides a clear pathway from initial production to meaningful long term supply growth.



**Figure 4: Construction of Li-Pro DLE Structure**

5 ASX Release – "PRAIRIE PROJECT PRODUCTION APPROVED & PROJECT UPDATE" - 23 MAY 2025. THE COMPANY CONFIRMS THAT IT IS NOT AWARE OF ANY NEW INFORMATION THAT MATERIALLY AFFECTS THE INFORMATION INCLUDED IN THE ORIGINAL MARKET ANNOUNCEMENT AND THAT ALL MATERIAL ASSUMPTIONS AND TECHNICAL PARAMETERS UNDERPINNING ESTIMATES IN THE RELEVANT MARKET ANNOUNCEMENT CONTINUE TO APPLY AND HAVE NOT CHANGED. REFER APPENDIX 1 FOR RESOURCE SUMMARY.



Figure 5: Construction of Li-Pro DLE Columns

### Next Steps

- Completion of facility construction and transition to equipment installation in Q2-Q3 2026
- Commissioning the DLE plant and deliver first production targeted in Q4 2026
- First revenue generation under the binding Hydro Lithium offtake agreement
- Operational performance results, including recovery rates and cost metrics
- Potential expansion beyond Phase 1 through scalable pad by pad development
- Further growth opportunities via increased production and expanded offtake agreements

### About the Prairie Lithium Project

PL9's Prairie Lithium Project in Saskatchewan, Canada, is in one of the world's top mining friendly jurisdictions. The project has easy access to key infrastructure including electricity, natural gas, fresh water, paved highways and railroads. The project also aims to have strong environmental credentials, with Prairie Lithium targeting to use less freshwater, land and waste, aligning with the Company's sustainable approach to lithium development.

This ASX announcement is authorised for release by the Board.

### For further information please contact:

Mr. Paul Lloyd  
Managing Director  
Tel. +61 419 945 395  
[paul@prairielithium.com](mailto:paul@prairielithium.com)

**APPENDIX 1**

	<b>Li Mass (tonnes)</b>	<b>LCE Mass (tonnes)</b>
<b>Producing Formations</b>	<b>Indicated</b>	<b>Indicated</b>
<b>Seward</b>	<b>62,459</b>	<b>332,469</b>
<b>Flat Lake</b>	<b>4,076</b>	<b>21,697</b>
<b>Upper Wymark</b>	<b>110,674</b>	<b>589,118</b>
<b>Middle Wymark</b>	<b>449,381</b>	<b>2,392,055</b>
<b>Lower Wymark</b>	<b>97,223</b>	<b>517,518</b>
<b>Saskatoon</b>	<b>131,565</b>	<b>700,320</b>
<b>Total</b>	<b>860,000</b>	<b>4,600,000</b>

Figure 6: Prairie Project Resource Summary. Representative lithium concentrations within the Resource area based on the mass volume and brine volume estimates. The average lithium concentration across all zones over the Prairie Project land permits is 98 mg/L.

For personal use only