

## Two Additional Gold-Copper Targets on the Telfer South Project

Hasties Gold-Copper zone now extends to over 1.1 km strike - 10km SW of Telfer Gold Mine

### Highlights

An ongoing review of Newcrest Mining Limited's extensive exploration activity has identified 478 historic rock-chip samples<sup>1</sup> from within Rincon's 100% owned Telfer South Project.

Two gold-copper targets have been identified at Telfer South:

- **Hasties 'Zone' Extension:** A new, north-westerly extension has been confirmed ~100m from the Hasties Main deposit with historic assays up to **10.5 g/t Au and 0.13% Cu**. The Hasties Zone now extends over **1.1 km** of strike length and remains open in both directions and located 10km SW of the Telfer Gold Mine.
- **Padion target:** Located ~4 km NE of the Hasties Zone. This high-grade target covers 450m of strike with historic rock chips up to **10.9 g/t Au and 1.5% Cu**.

Exploration at Hasties is a strategic priority for Rincon, driven by our multi-stage Farm-In and Joint Venture with Greatland Resources (ASX:GGP, AIM:GGP). This agreement, announced on 18 December 2025<sup>2</sup>, grants access to 200.8 km<sup>2</sup> of Rincon-owned tenements.

### Rincon Technical Director, Michael Griffiths commented:

"This marks the second compilation of historic rock chip sampling conducted by Apex Geoscience, comprising 478 samples from within the Telfer South Project area. The Hasties Zone continues to expand, with this batch of historic samples adding a further 100m of gold and copper prospectivity to the identified trend. The Hasties Zone remains open along strike.

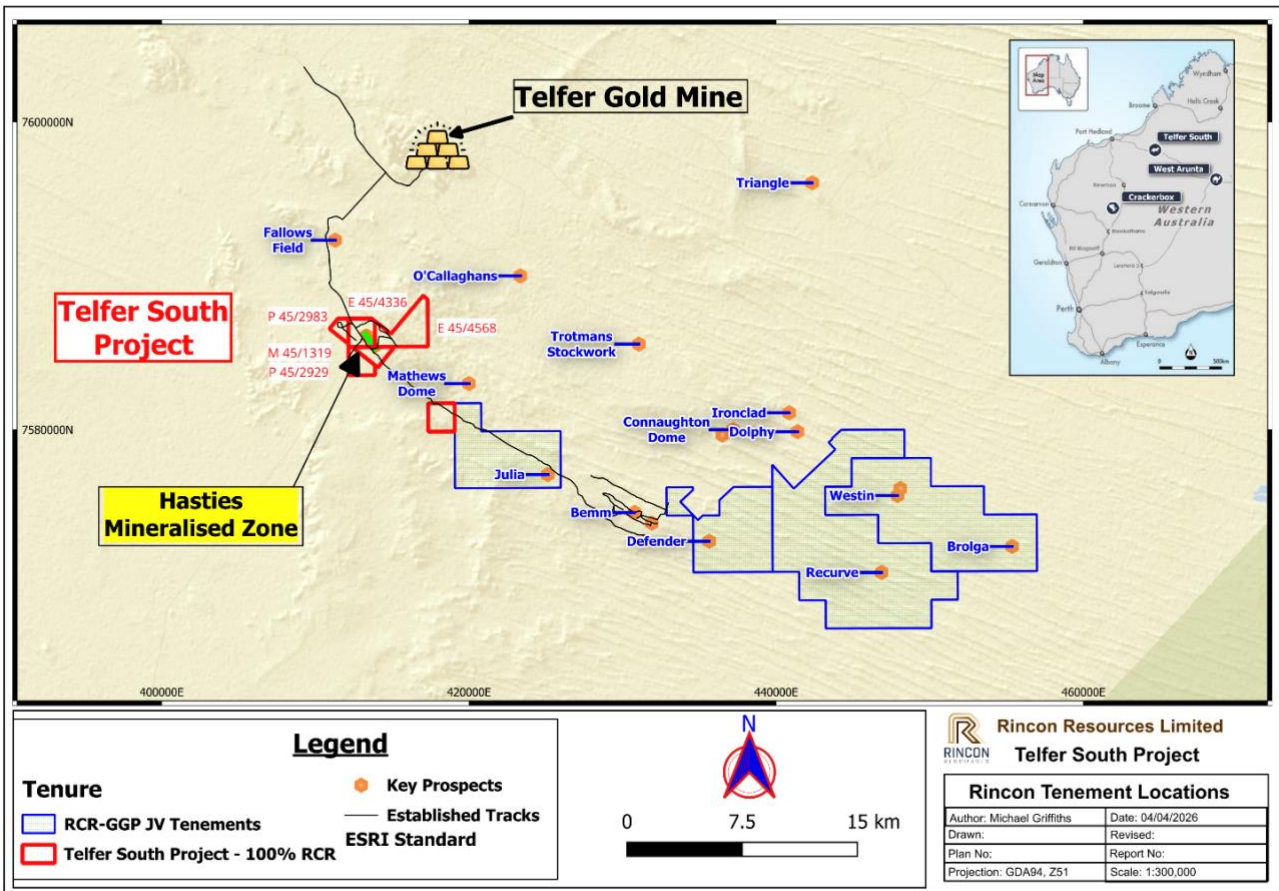
We believe we have now captured all available historic rock chip data and are currently compiling the extensive soil sample data that covers a large proportion of the Telfer South Project, adding another layer of high-quality exploration data.

Once field activities commence over areas already cleared for activity other known prospects and newly identified areas, will be prioritised through the permitting process".

<sup>1</sup> Department of Local Government, Industry Regulation and Safety (LGIRS) –Newcrest Mining Ltd Reports: Newcrest Mining Limited Report Numbers: 68218, 69889, 70039, 72044, 77170, 79774, 102251, 103202, 104552, 112319, a43919 7 and a70039.

<sup>2</sup> Refer to Rincon Resources Limited's Farm-In & Joint Venture with Greatland Resources on Telfer South Tenements dated 18<sup>th</sup> December 2025

**Rincon Resources Limited (ASX: RCR) (“Rincon” or “Company”)** is pleased to advise that it has continued the gathering and validation of historic rock chip sample data from work completed by Newcrest Mining Limited (“Newcrest”)<sup>3</sup> during the early 1990s. This dataset falls within the Telfer South Project that hosts the Hasties Main and Hasties South-east gold-copper deposits, which are situated approximately 10 km south of the Telfer Gold Copper Mine in Western Australia's Eastern Pilbara region (Figures 1 & 3).



**Figure 1 – Telfer South Project Location**

Rincon is actively advancing exploration at the Telfer South Project, with the Hasties Gold-Copper deposit serving as the primary focus. This initiative is supported by a multi-stage, multi-year Farm-In and Joint Venture agreement with Greatland Resources (ASX:GGP, AIM:GGP), which covers 200.8 km<sup>2</sup> of Rincon-owned exploration tenements as announced on 18 December 2026<sup>4</sup>.

A second comprehensive compilation of historic rock chip sampling has been completed by Apex Geoscience, collating a further 478 samples from within the South Telfer Project area and identifying two new targets at Telfer South:

- **Hasties 'Zone' Extension:** A new, north-westerly extension has been confirmed ~100m from the Hasties Main deposit with historic assays up to **10.5 g/t Au and 0.13% Cu**. The

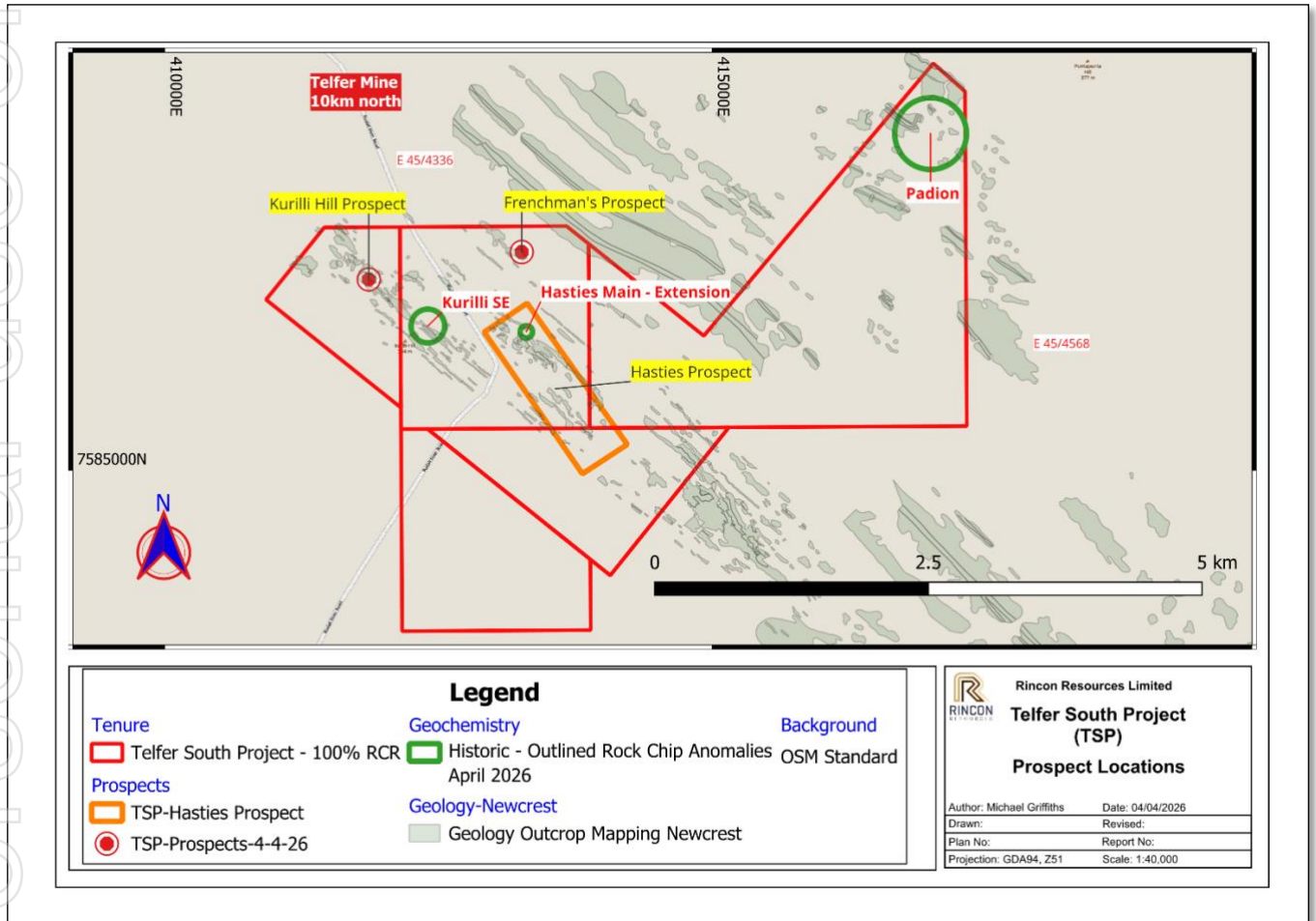
<sup>3</sup> Department of Local Government, Industry Regulation and Safety (LGIRS) –Newcrest Mining Ltd Reports: Newcrest Mining Limited Report Numbers: 68218, 69889, 70039, 72044, 77170, 79774, 102251, 103202, 104552, 112319, a43919 7 and a70039.

<sup>4</sup> Refer to Rincon Resources Limited’s Farm-In & Joint Venture with Greatland Resources on Telfer South Tenements dated 18<sup>th</sup> December 2025

Hasties Zone now extends over **1.1 km** of strike length and remains open in both directions (Figure 3).

- **Padion target:** Located ~4 km NE of the Hasties Zone. This high-grade target covers 450m of strike with historic rock chips up to **10.9 g/t Au and 1.5% Cu** (Figure 2).

**Table 1** below, identifies the additional high grade historic rock-chip assays, detailing results that exceed +1 g/t Au and +5.0% Cu across the Telfer South Project.



**Figure 2 –Telfer South Project - Prospect Locations and identified additional gold-copper anomalies based on historic rock chip samples.**

The newly released historic Newcrest data (Table 1 and Table 2), supplements the February 26<sup>th</sup>, 2026<sup>5</sup> historic rock chip sample results by providing additional high-grade gold and copper assays. These findings further confirm significant gold-copper mineralization across the Hasties Zone (including Hasties Main, Hasties Central, and Hasties SE) where the previously released historic gold grades reached 37g/t Au with copper assays up to 21% Cu.

Outside the Hasties Zone, historic rock chip sampling has revealed significant gold and copper values at two additional prospects:

- Kirilli Hill Prospect - gold grades reaching up to 7.9 g/t Au and

<sup>5</sup> Refer Rincon Resources announcement - Telfer South Data Reveals Significantly Larger Gold Copper Prospect 26-2-2026

- Frenchman's Prospect - copper values as high as 36.30% Cu (Figure 2).

At Kirilli SE (Figure 2), a low-grade gold target was also identified from the historic assays extending over 120 metres of strike.

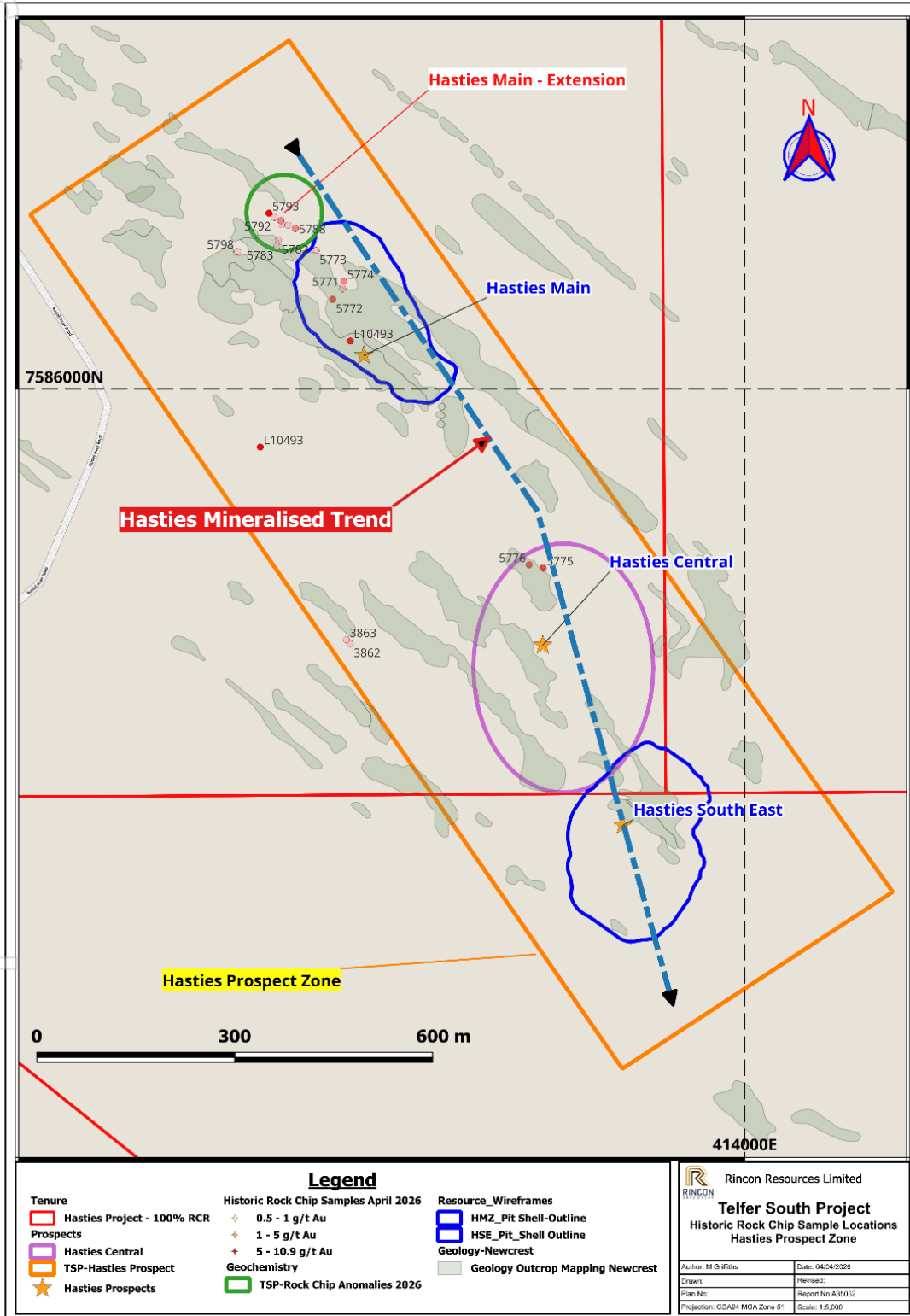


Figure 3 –Hasties Prospect - Historic Rock Chip Sample Locations

All historic assay results have been cross-checked and verified against certified laboratory data from the Newcrest Mining Limited historic reports with efforts now focussed on integrating extensive soil sampling data to enhance the exploration model.

As field activities commence during the June quarter, Rincon plans (subject to required permitting) to conduct additional surface sampling on the newly identified prospects and the known prospects to expand the overall prospectivity of the project.

All the historic rock chip assay results from this release are shown in Table 2.

In parallel, Rincon remains committed to upgrading its February 2025 Mineral Resource Estimate (MRE), which presently stands at 870,000 t at 0.96 g/t Au and 0.26 % Cu (approximately 26,800 oz Au and 2,286 t Cu)<sup>6</sup>. Using drilling completed in Q4 2025, the updated resource will extend near-surface mineralisation by roughly 150 m along strike toward Hasties Central and down-dip into the transition zone, confirming that mineralisation remains open at depth.

Sample No.	Easting (MGA94_51)	Northing (MGA94_51)	Cu %	Au g/t	Company	Prospect
3852	413332	7586947	36.30	0.3	Newcrest Mining Limited	Frenchmen's
3853	413321	7586943	23.50	0.62	Newcrest Mining Limited	Frenchmen's
3854	413307	7586980	13.40	0.63	Newcrest Mining Limited	Frenchmen's
3855	413304	7586969	12.70	3.01	Newcrest Mining Limited	Frenchmen's
3862	413402	7585614	3.96	0.41	Newcrest Mining Limited	Hasties-Prospect
3863	413396	7585620	4.89	0.22	Newcrest Mining Limited	Hasties-Prospect
5793	413279	7586266	0.18	10.5	Newcrest Mining Limited	Hasties Extension
FD03_034	411879	7586559	0.60	7.95	Newcrest Mining Limited	Kurilli Hill
FD03_035	411889	7586627	0.24	1.02	Newcrest Mining Limited	Kurilli Hill
L10492	411746	7586456	0.27	1.45	Newcrest Mining Limited	Kurilli Hill
L10493	413266	7585912	0.02	8.2	Newcrest Mining Limited	Hasties-Prospect
RJD05151	416918	7588158	0.07	2.45	Newcrest Mining Limited	Padion
RJD05157	416914	7588131	1.50	10.9	Newcrest Mining Limited	Padion
RJD05190	416921	7588183	0.21	6.04	Newcrest Mining Limited	Padion
RJD05208	417090	7588066	0.02	1.91	Newcrest Mining Limited	Padion

**Table 1 –Second Release - Significant Historic Newcrest Mining Limited Rock Chip Samples.**

**Authorised by the Board of Rincon Resources Limited.**

For more information visit [www.rinconresources.com.au](http://www.rinconresources.com.au) or contact:

**Company:**

Office: Tel: +61 (8) 6555 2950

**Michael Griffiths - Director**

Email: [mike.griffiths@rinconresources.com.au](mailto:mike.griffiths@rinconresources.com.au)

**David Lenigas - Chairman**

<sup>6</sup> Refer to Rincon Resources Limited's announcement Maiden Gold Resource Update – Telfer South dated 10 February 2025 and Annexure A

Email: davidlenigas@gmail.com

**About Rincon:**

Rincon has 100% interest in four exploration assets in Western Australia that are highly prospective for copper and gold. These are the South Telfer Project, Crackerbox Gold Project (Murchison Gold Field), West Arunta Project and the Laverton Project.

Following the recent farm-in and joint-venture<sup>7</sup> with Greatland Resources (ASX:GGP), Rincon's Telfer South–Hasties Project now consists of two exploration licences and two prospecting licences. Together they cover roughly 15 km<sup>2</sup> with several parallel structures across geology known to host significant gold and copper mineralisation.

Each asset has previously been subject to historical exploration which has identified prospective mineral systems that warrant further exploration. The Company's aim is to create value for its shareholders by advancing its assets through the application of technically sound, methodical, and systematic exploration programs to test, discover, and delineate economic resources for mining.



<sup>7</sup> Refer to Rincon Resources Limited's - Farm-In & Joint Venture with Greatland Resources on Telfer South Tenements dated 18<sup>th</sup> December 2025

## **Competent Person Statements**

### **Mr Michael Griffiths**

The information in this report that relates to Exploration Results is based on information compiled by Mr Michael Griffiths a Competent Person who is a Fellow of the Australasian Institute of Mining and Metallurgy. Mr. Griffiths is a Director of the Company. Mr. Griffiths has sufficient experience that is relevant to the style of mineralisation and type of deposit under consideration and to the activity being undertaken to qualify as a Competent Person as defined in the 2012 Edition of the “Australasian Code for Reporting of Exploration Results, Mineral Resources and Ore Reserves”. Mr. Griffiths consents to the inclusion in this report of the matters based on his information in the form and context in which it appears. The Company confirms that it is not aware of any new information or data that materially affects the information included in the original market announcements in relation to the Exploration Results. The Company confirms that the form and context in which the competent persons findings are presented have not been materially modified from the original announcements.

With respect to estimates of Mineral Resources, announced on 25 February 2025 (MRE Announcement), the Company confirms that the Exploration Results in this announcement is expected to form part of a revision to the current MRE, however all relevant information and data required to revise the MRE is not yet available. Other than the potential impact of the above, the Company confirms that it is not aware of any new information or data in a form able assess that materially effects the information in the MRE Announcement and that all material assumptions and technical parameters underpinning the estimates continue to apply and have not materially changed.

### **Forward-Looking Statements**

This announcement may contain certain forward-looking statements and opinions. Forward-looking statements, including projections, forecasts and estimates, are provided as a general guide only and should not be relied on as an indication or guarantee of future performance and involve known and unknown risks, uncertainties, assumptions, contingencies and other important factors, many of which are outside the control of the Company and which are subject to change without notice and could cause the actual results, performance or achievements of the Company to be materially different from the future results, performance or achievements expressed or implied by such statements. Past performance is not necessarily a guide to future performance, and no representation or warranty is made as to the likelihood of achievement or reasonableness of any forward-looking statements or other forecast. Nothing contained in this announcement, nor any information made available to you is, or and shall be relied upon as, a promise, representation, warranty or guarantee as to the past, present or the future performance of Rincon.

**Annexure A – Maiden Gold Resource – Telfer South**  
**dated 10 February 2025 Mineral Resource Estimate<sup>8</sup>**

**Table 1a: Hasties Gold-Copper Mineral Resource 0.3 g/t Au Cutoff**

<b>Hasties Main Zone and Hasties Southeast</b>					
<b>AuCut &gt;=0.3</b>					
<b>Class</b>	<b>Tonnes</b>	<b>Au (g/t)</b>	<b>Cu (%)</b>	<b>Au (oz)</b>	<b>Cu (t)</b>
Indicated	633,000	1.03	0.28	21,100	1,733
Inferred	237,000	0.75	0.23	5,700	553
<b>Total</b>	<b>870,000</b>	<b>0.96</b>	<b>0.26</b>	<b>26,800</b>	<b>2,286</b>

**Table 2a Hasties Gold-Copper Resource 0.5 g/t Au Cutoff**

<b>Hasties Main Zone and Hasties Southeast</b>					
<b>AuCut &gt;=0.5</b>					
<b>Class</b>	<b>Tonnes</b>	<b>Au (g/t)</b>	<b>Cu (%)</b>	<b>Au (oz)</b>	<b>Cu (t)</b>
Indicated	567,000	1.11	0.28	20,100	1,557
Inferred	187,000	0.84	0.24	5,000	459
<b>Total</b>	<b>754,000</b>	<b>1.04</b>	<b>0.27</b>	<b>25,200</b>	<b>2,016</b>

**Table 3a Hasties Gold-Copper Resource 1.0 g/t Au Cutoff**

<b>Hasties Main Zone and Hasties Southeast</b>					
<b>AuCut &gt;=1.0</b>					
<b>Class</b>	<b>Tonnes</b>	<b>Au (g/t)</b>	<b>Cu (%)</b>	<b>Au (oz)</b>	<b>Cu (t)</b>
Indicated	195,000	1.92	0.27	12,000	515
Inferred	40,000	1.59	0.35	2,000	139
<b>Total</b>	<b>235,000</b>	<b>1.86</b>	<b>0.28</b>	<b>14,100</b>	<b>654</b>

<sup>8</sup> Refer to Rincon Resources Limited's announcement Maiden Gold Resource Update – Telfer South dated 10 February 2025

**Table 2 –Historic Newcrest Mining Limited Historic Rock Chip Sample Locations & Assays<sup>9</sup>**

Sample No.	Easting (MGA94_5 1)	Northing (MGA94_51)	Cu ppm	Cu %	As ppm	Bi ppm	Au g/t	Au ppb	Company
3844	413245	7586185	19	0.00	41	-	0.01	10	Newcrest Mining Limited
3845	413251	7586182	25	0.00	80	-	0.00	0	Newcrest Mining Limited
3846	413259	7586180	26	0.00	69	6	0.00	0	Newcrest Mining Limited
3847	413236	7586190	26	0.00	45	-	0.00	0	Newcrest Mining Limited
3848	413260	7586192	34	0.00	253	-	0.00	0	Newcrest Mining Limited
3849	413126	7586239	11	0.00	58	-	0.01	10	Newcrest Mining Limited
3850	413115	7586279	6	0.00	51	8	0.03	30	Newcrest Mining Limited
3851	413141	7586297	1,260	0.13	1,440	15	0.02	20	Newcrest Mining Limited
3852	413332	7586947	363,000	36.30	81	9	0.30	300	Newcrest Mining Limited
3853	413321	7586943	235,000	23.50	56	10	0.62	620	Newcrest Mining Limited
3854	413307	7586980	134,000	13.40	43	7	0.63	630	Newcrest Mining Limited
3855	413304	7586969	127,000	12.70	47	6	3.01	3,010	Newcrest Mining Limited
3856	414012	7585509	1,870	0.19	24	-	0.01	10	Newcrest Mining Limited
3857	413963	7585527	817	0.08	23	-	0.03	30	Newcrest Mining Limited
3858	413976	7585552	76	0.01	27	7	0.02	20	Newcrest Mining Limited
3859	413883	7585638	228	0.02	30	-	0.00	0	Newcrest Mining Limited
3860	413905	7585616	47	0.00	41	10	0.02	20	Newcrest Mining Limited
3861	413921	7585576	61	0.01	29	8	0.04	40	Newcrest Mining Limited
3862	413402	7585614	39,600	3.96	3,120	16	0.41	410	Newcrest Mining Limited
3863	413396	7585620	48,900	4.89	1,200	-	0.22	220	Newcrest Mining Limited
3872	412850	7585915	845	0.08	2,790	91	0.11	110	Newcrest Mining Limited
3873	411803	7586643	108	0.01	86	-	0.01	10	Newcrest Mining Limited
3874	411773	7586606	314	0.03	112	22	0.00	0	Newcrest Mining Limited

<sup>9</sup> Department of Local Government, Industry Regulation and Safety (LGIRS)- Newcrest Mining Ltd Reports: Newcrest Mining Limited Report Numbers: 68218, 69889, 70039, 72044, 77170, 79774, 102251, 103202, 104552, 112319, a43919 7 and a70039

3880	411879	7586639	3,590	0.36	4,110	153	0.46	460	Newcrest Mining Limited
3881	412008	7586820	662	0.07	20	6	0.01	10	Newcrest Mining Limited
3882	412034	7586842	53	0.01	37	-	0.01	10	Newcrest Mining Limited
3883	411979	7586843	1,860	0.19	424	-	0.02	20	Newcrest Mining Limited
3884	411948	7586850	25	0.00	136	10	0.02	20	Newcrest Mining Limited
3885	411893	7586911	34	0.00	920	7	0.04	40	Newcrest Mining Limited
3886	411899	7586892	46	0.00	217	9	0.00	0	Newcrest Mining Limited
3887	411913	7586902	2,170	0.22	519	11	0.02	20	Newcrest Mining Limited
3888	411908	7586869	16	0.00	120	6	0.01	10	Newcrest Mining Limited
3889	411904	7586847	26	0.00	293	-	0.03	30	Newcrest Mining Limited
5779	413258	7586227	44	0.00	33	-	0.00	0	Newcrest Mining Limited
5780	413269	7586235	60	0.01	28	-	0.02	20	Newcrest Mining Limited
5781	413280	7586243	33	0.00	62	-	0.02	20	Newcrest Mining Limited
5782	413293	7586225	39	0.00	13,900	18	0.30	300	Newcrest Mining Limited
5783	413291	7586216	36	0.00	4,720	9	0.15	150	Newcrest Mining Limited
5784	413294	7586208	58	0.01	1,090	-	0.02	20	Newcrest Mining Limited
5785	413314	7586224	21	0.00	56	-	0.01	10	Newcrest Mining Limited
5786	413307	7586236	37	0.00	40	6	0.01	10	Newcrest Mining Limited
5787	413329	7586235	100	0.01	6,810	-	0.06	60	Newcrest Mining Limited
5788	413319	7586243	60	0.01	12,900	132	0.53	530	Newcrest Mining Limited
5789	413308	7586248	154	0.02	14,200	37	0.20	200	Newcrest Mining Limited
5790	413298	7586249	273	0.03	11,100	-	0.16	160	Newcrest Mining Limited
5791	413297	7586255	1,320	0.13	11,100	22	0.65	650	Newcrest Mining Limited
5792	413287	7586260	1,260	0.13	6,190	8	0.23	230	Newcrest Mining Limited
5793	413279	7586266	1,770	0.18	12,600	30	10.50	10,500	Newcrest Mining Limited
5794	413239	7586258	57	0.01	172	-	0.00	0	Newcrest Mining Limited
5795	413220	7586225	24	0.00	153	-	0.00	0	Newcrest Mining Limited
5796	413235	7586230	56	0.01	26	10	0.00	0	Newcrest Mining Limited

5797	413206	7586211	11	0.00	39	-	0.00	0	Newcrest Mining Limited
5798	413231	7586208	14	0.00	197	-	0.16	160	Newcrest Mining Limited
5799	413223	7586199	13	0.00	92	-	0.01	10	Newcrest Mining Limited
5800	413230	7586193	10	0.00	31	-	0.00	0	Newcrest Mining Limited
512574	417081	7588087	2,080	0.21	111	17	0.13	130	Newcrest Mining Limited
512575	417080	7588088	1,680	0.17	291	19	0.07	70	Newcrest Mining Limited
512576	417079	7588089	2,190	0.22	801	31	0.07	70	Newcrest Mining Limited
512577	417020	7588126	146	0.01	18	3	0.09	90	Newcrest Mining Limited
512578	417022	7588123	57	0.01	11	0	0.01	10	Newcrest Mining Limited
512579	417023	7588126	34	0.00	14	0	0.01	10	Newcrest Mining Limited
512580	417008	7588138	104	0.01	33	3	0.04	40	Newcrest Mining Limited
512581	417012	7588137	105	0.01	19	3	0.63	630	Newcrest Mining Limited
512582	417078	7588102	52	0.01	18	0	-	-	Newcrest Mining Limited
512583	417077	7588105	36	0.00	7	0	-	-	Newcrest Mining Limited
512584	417079	7588110	102	0.01	21	1	-	-	Newcrest Mining Limited
512585	417087	7588107	45	0.00	7	0	-	-	Newcrest Mining Limited
512586	417067	7588122	60	0.01	4	1	-	-	Newcrest Mining Limited
A3442	414471	7585207	45	0.00	70	5	0.01	10	Newcrest Mining Limited
A3443	414516	7585169	1	0.00	50	3	0.01	10	Newcrest Mining Limited
A3444	414428	7585218	1	0.00	20	3	0.00	5	Newcrest Mining Limited
AW04_016	432918	7575009	13	0.00	46	-	-	0	Newcrest Mining Limited
AW04_016	432918	7575009	13	0.00	-	-	-	0	Newcrest Mining Limited
AW04_017	432932	7575015	24	0.00	68	-	-	0	Newcrest Mining Limited
AW04_027	432882	7574990	22	0.00	156	-	-	3	Newcrest Mining Limited
AW04_028	433055	7574977	153	0.02	89	-	0.10	95	Newcrest Mining Limited
AW04_029	433061	7574970	289	0.03	17	-	0.01	7	Newcrest Mining Limited
AW04_030	433072	7574923	12	0.00	166	-	0.01	5	Newcrest Mining Limited
AW04_031	433072	7574926	8	0.00	12	-	-	2	Newcrest Mining Limited

AW04_032	433198	7575808	9	0.00	18	-	-	0	Newcrest Mining Limited
AW04_033	433168	7575810	8	0.00	12	-	-	1	Newcrest Mining Limited
AW04_034	433308	7575767	7	0.00	66	-	0.01	8	Newcrest Mining Limited
AW04_035	433323	7575762	4	0.00	44	-	0.01	5	Newcrest Mining Limited
AW04_036	433358	7575746	11	0.00	106	-	0.02	15	Newcrest Mining Limited
AW04_037	433012	7575875	7	0.00	8	-	-	0	Newcrest Mining Limited
AW04_038	433003	7575879	9	0.00	38	-	-	0	Newcrest Mining Limited
FD03_009	411227	7586800	61	0.01	18	1	0.05	49	Newcrest Mining Limited
FD03_010	411226	7586780	41	0.00	20	0	-	0	Newcrest Mining Limited
FD03_011	411179	7586732	13	0.00	51	4	0.01	7	Newcrest Mining Limited
FD03_023	411904	7586900	62	0.01	64	2	0.01	7	Newcrest Mining Limited
FD03_024	411903	7586881	251	0.03	116	6	0.02	18	Newcrest Mining Limited
FD03_026	411616	7586468	777	0.08	69	0	0.01	9	Newcrest Mining Limited
FD03_027	411792	7586649	5,719	0.57	45	1	0.03	31	Newcrest Mining Limited
FD03_028	411794	7586651	293	0.03	50	0	0.01	12	Newcrest Mining Limited
FD03_029	411975	7586846	300	0.03	12	0	0.02	20	Newcrest Mining Limited
FD03_030	412028	7586925	37	0.00	69	5	0.01	11	Newcrest Mining Limited
FD03_033	412254	7587216	15,056	1.51	791	5	0.06	58	Newcrest Mining Limited
FD03_034	411879	7586559	6,028	0.60	57,268	181	7.95	7,952	Newcrest Mining Limited
FD03_035	411889	7586627	2,406	0.24	1,772	201	1.02	1,017	Newcrest Mining Limited
FD03_036	412040	7586776	146	0.01	1,535	6	0.16	164	Newcrest Mining Limited
FD03_037	412093	7586852	50	0.01	126	10	0.03	25	Newcrest Mining Limited
FD03_038	412086	7586872	27	0.00	157	7	0.02	20	Newcrest Mining Limited
FD03_039	412014	7586706	29	0.00	23	1	0.01	5	Newcrest Mining Limited
FD03_040	412054	7586643	13	0.00	39	0	0.02	15	Newcrest Mining Limited
FD03_041	412044	7586647	21	0.00	20	0	0.01	6	Newcrest Mining Limited
FD03_042	412226	7586846	9	0.00	54	3	0.01	12	Newcrest Mining Limited
FD03_043	412255	7586829	9	0.00	115	3	0.07	72	Newcrest Mining Limited

FD03_044	412274	7586863	10	0.00	29	2	0.01	13	Newcrest Mining Limited
FD03_045	411494	7586437	81	0.01	35	0	-	3	Newcrest Mining Limited
FD03_136	411682	7586534	613	0.06	15	0	-	4	Newcrest Mining Limited
FD03_137	411835	7586648	89	0.01	44	0	-	3	Newcrest Mining Limited
FD03_138	411582	7586500	517	0.05	74	7	-	0	Newcrest Mining Limited
FD03_139	411615	7586495	363	0.04	25	2	-	1	Newcrest Mining Limited
FD03_140	412121	7586665	10	0.00	29	0	-	3	Newcrest Mining Limited
FD03_141	412123	7586647	16	0.00	24	0	-	4	Newcrest Mining Limited
FD03_142	412216	7586705	8	0.00	38	4	0.01	5	Newcrest Mining Limited
FD03_143	411176	7586741	13	0.00	72	5	0.01	12	Newcrest Mining Limited
FD03_148	412269	7586821	8	0.00	79	5	0.07	65	Newcrest Mining Limited
H28_9250	411250	7586934	26	0.00	38	2	-	3	Newcrest Mining Limited
H28_9275	411266	7586953	35	0.00	36	2	0.01	7	Newcrest Mining Limited
H28_9300	411282	7586972	21	0.00	18	2	0.01	14	Newcrest Mining Limited
H28_9325	411298	7586991	58	0.01	31	1	0.01	6	Newcrest Mining Limited
H28_9350	411178	7586848	163	0.02	88	2	0.01	7	Newcrest Mining Limited
H28_9375	411194	7586867	33	0.00	34	2	0.01	7	Newcrest Mining Limited
H28_9400	411210	7586886	68	0.01	39	2	0.01	6	Newcrest Mining Limited
H28_9700	411405	7587115	29	0.00	48	1	0.02	18	Newcrest Mining Limited
H28_9725	411421	7587134	38	0.00	78	3	-	4	Newcrest Mining Limited
H28_9750	411437	7587153	51	0.01	96	3	0.02	18	Newcrest Mining Limited
H28_9775	411453	7587172	29	0.00	50	2	0.04	43	Newcrest Mining Limited
H28_9800	411470	7587191	21	0.00	49	1	0.01	10	Newcrest Mining Limited
H28_9825	411486	7587210	5	0.00	6	1	-	1	Newcrest Mining Limited
H29_9250	411189	7586707	23	0.00	34	3	-	4	Newcrest Mining Limited
H29_9275	411205	7586726	39	0.00	42	3	0.01	8	Newcrest Mining Limited
H29_9300	411222	7586745	54	0.01	26	3	-	3	Newcrest Mining Limited
H29_9325	411238	7586764	39	0.00	16	2	-	1	Newcrest Mining Limited

H29_9350	411254	7586783	75	0.01	40	3	-	1	Newcrest Mining Limited
H29_9375	411270	7586803	48	0.00	44	3	-	1	Newcrest Mining Limited
H29_9650	411585	7587174	22	0.00	48	4	0.01	12	Newcrest Mining Limited
H29_9675	411601	7587193	11	0.00	65	4	0.06	56	Newcrest Mining Limited
H29_9700	411617	7587212	11	0.00	78	5	0.02	22	Newcrest Mining Limited
H29_9875	411594	7587183	44	0.00	36	2	-	3	Newcrest Mining Limited
H29_9900	411611	7587202	19	0.00	44	2	0.09	88	Newcrest Mining Limited
H29_9925	411627	7587221	13	0.00	11	1	-	1	Newcrest Mining Limited
H30_9275	411282	7586662	144	0.01	31	2	-	2	Newcrest Mining Limited
H30_9300	411298	7586681	246	0.02	38	5	-	2	Newcrest Mining Limited
H30_9325	411314	7586700	210	0.02	33	2	-	2	Newcrest Mining Limited
H30_9725	411710	7587166	12	0.00	54	5	0.01	5	Newcrest Mining Limited
H30_9750	411726	7587185	11	0.00	53	5	0.01	6	Newcrest Mining Limited
H30_9775	411742	7587204	44	0.00	67	3	0.02	15	Newcrest Mining Limited
H30_9800	411758	7587222	25	0.00	-	2	-	3	Newcrest Mining Limited
H30_9925	411703	7587157	22	0.00	15	2	-	2	Newcrest Mining Limited
H30_9950	411719	7587176	43	0.00	19	1	-	4	Newcrest Mining Limited
H30_9975	411735	7587195	29	0.00	18	1	0.01	6	Newcrest Mining Limited
H31_9225	411325	7586559	41	0.00	27	1	-	2	Newcrest Mining Limited
H31_9250	411342	7586578	42	0.00	56	1	-	2	Newcrest Mining Limited
H31_9275	411358	7586597	174	0.02	27	1	-	0	Newcrest Mining Limited
H31_9300	411374	7586616	39	0.00	14	1	-	1	Newcrest Mining Limited
H31_9725	411786	7587101	7	0.00	70	4	0.14	141	Newcrest Mining Limited
H31_9750	411802	7587120	8	0.00	15	2	0.01	7	Newcrest Mining Limited
H31_9775	411818	7587139	10	0.00	17	2	0.01	7	Newcrest Mining Limited
H31_9800	411834	7587159	8	0.00	28	2	0.02	16	Newcrest Mining Limited
H31_9825	411851	7587178	24	0.00	39	3	-	3	Newcrest Mining Limited
H31_9850	411867	7587197	10	0.00	14	2	-	1	Newcrest Mining Limited

H31_9875	411883	7587216	77	0.01	26	3	-	2	Newcrest Mining Limited
H31_9950	411795	7587111	35	0.00	20	1	-	1	Newcrest Mining Limited
H31_9975	411811	7587130	28	0.00	21	2	0.02	24	Newcrest Mining Limited
H32_10125	411985	7587179	25	0.00	18	1	-	3	Newcrest Mining Limited
H32_10150	412001	7587198	58	0.01	39	1	0.01	8	Newcrest Mining Limited
H32_10175	412017	7587217	21	0.00	27	1	-	2	Newcrest Mining Limited
H32_9275	411434	7586532	3,731	0.37	30	1	0.06	59	Newcrest Mining Limited
H32_9300	411450	7586551	473	0.05	23	1	-	3	Newcrest Mining Limited
H32_9325	411466	7586570	9,568	0.96	28	1	0.03	26	Newcrest Mining Limited
H32_9700	411846	7587018	45	0.00	51	4	0.01	6	Newcrest Mining Limited
H32_9725	411862	7587037	22	0.00	19	2	-	2	Newcrest Mining Limited
H32_9750	411878	7587056	25	0.00	16	2	0.11	110	Newcrest Mining Limited
H32_9775	411894	7587075	13	0.00	11	1	-	2	Newcrest Mining Limited
H32_9800	411911	7587094	22	0.00	35	2	0.01	9	Newcrest Mining Limited
H32_9825	411927	7587113	17	0.00	25	1	-	3	Newcrest Mining Limited
H32_9850	411943	7587132	39	0.00	20	2	-	2	Newcrest Mining Limited
H32_9875	411959	7587151	24	0.00	24	1	-	3	Newcrest Mining Limited
H32_9900	411975	7587170	36	0.00	26	2	0.01	7	Newcrest Mining Limited
H32_9925	411992	7587189	18	0.00	14	1	-	1	Newcrest Mining Limited
H32_9950	412008	7587208	18	0.00	18	2	-	1	Newcrest Mining Limited
H33_10225	412126	7587191	49	0.00	19	1	-	4	Newcrest Mining Limited
H33_10250	412142	7587210	48	0.00	22	1	-	4	Newcrest Mining Limited
H33_9250	411494	7586448	38	0.00	11	0	-	0	Newcrest Mining Limited
H33_9275	411510	7586467	49	0.00	5	0	-	1	Newcrest Mining Limited
H33_9300	411526	7586486	949	0.09	37	1	-	2	Newcrest Mining Limited
H33_9325	411542	7586505	89	0.01	26	2	-	2	Newcrest Mining Limited
H33_9350	411559	7586524	119	0.01	25	2	0.01	6	Newcrest Mining Limited
H33_9375	411575	7586543	172	0.02	21	1	-	2	Newcrest Mining Limited

H33_9400	411591	7586562	6,551	0.66	12	1	0.04	43	Newcrest Mining Limited
H33_9650	411890	7586915	21	0.00	50	3	-	3	Newcrest Mining Limited
H33_9675	411906	7586934	20	0.00	28	2	-	4	Newcrest Mining Limited
H33_9700	411922	7586953	23	0.00	11	1	-	1	Newcrest Mining Limited
H33_9725	411938	7586972	23	0.00	16	1	-	0	Newcrest Mining Limited
H33_9750	411954	7586991	21	0.00	17	1	-	1	Newcrest Mining Limited
H33_9775	411971	7587010	28	0.00	43	1	-	2	Newcrest Mining Limited
H33_9800	411987	7587029	35	0.00	25	2	-	2	Newcrest Mining Limited
H33_9825	412003	7587048	29	0.00	24	2	-	1	Newcrest Mining Limited
H33_9850	412019	7587067	44	0.00	19	2	-	2	Newcrest Mining Limited
H33_9875	412035	7587086	12	0.00	20	1	-	1	Newcrest Mining Limited
H33_9900	412052	7587105	31	0.00	49	1	-	4	Newcrest Mining Limited
H33_9925	412068	7587124	17	0.00	17	1	0.02	24	Newcrest Mining Limited
H33_9950	412084	7587143	29	0.00	27	2	-	2	Newcrest Mining Limited
H34_10200	412186	7587107	9	0.00	17	1	-	2	Newcrest Mining Limited
H34_10225	412202	7587126	53	0.01	22	2	0.01	13	Newcrest Mining Limited
H34_10250	412218	7587145	2,723	0.27	672	5	0.03	29	Newcrest Mining Limited
H34_10275	412234	7587164	94	0.01	18	1	-	1	Newcrest Mining Limited
H34_10300	412251	7587183	136	0.01	30	2	0.01	5	Newcrest Mining Limited
H34_10325	412267	7587202	31	0.00	13	2	-	4	Newcrest Mining Limited
H34_10350	412283	7587221	49	0.00	14	1	0.01	6	Newcrest Mining Limited
H34_9225	411690	7586526	38	0.00	30	2	-	1	Newcrest Mining Limited
H34_9250	411706	7586545	45	0.00	38	3	-	1	Newcrest Mining Limited
H34_9275	411723	7586564	56	0.01	69	2	-	4	Newcrest Mining Limited
H34_9300	411739	7586583	38	0.00	38	4	-	2	Newcrest Mining Limited
H34_9325	411755	7586602	38	0.00	30	2	-	2	Newcrest Mining Limited
H34_9350	411771	7586621	227	0.02	31	1	-	0	Newcrest Mining Limited
H34_9375	411787	7586640	332	0.03	41	1	-	0	Newcrest Mining Limited

H34_9400	411804	7586659	231	0.02	63	0	-	0	Newcrest Mining Limited
H34_9425	411820	7586679	267	0.03	24	1	-	0	Newcrest Mining Limited
H34_9450	411836	7586698	561	0.06	20	2	-	4	Newcrest Mining Limited
H34_9475	411852	7586717	312	0.03	39	3	-	4	Newcrest Mining Limited
H34_9500	411868	7586736	530	0.05	529	4	-	4	Newcrest Mining Limited
H34_9525	411885	7586755	60	0.01	25	3	-	3	Newcrest Mining Limited
H34_9550	411901	7586774	20	0.00	40	4	0.01	6	Newcrest Mining Limited
H34_9575	411917	7586793	44	0.00	48	4	0.01	6	Newcrest Mining Limited
H34_9600	411933	7586812	13	0.00	19	2	-	3	Newcrest Mining Limited
H34_9625	411949	7586831	7	0.00	35	2	-	4	Newcrest Mining Limited
H34_9650	411966	7586850	10	0.00	30	2	-	2	Newcrest Mining Limited
H34_9675	411982	7586869	11	0.00	69	4	0.08	78	Newcrest Mining Limited
H34_9700	411998	7586888	16	0.00	28	2	-	2	Newcrest Mining Limited
H34_9725	412014	7586907	11	0.00	15	1	-	2	Newcrest Mining Limited
H34_9750	412031	7586926	16	0.00	14	1	-	0	Newcrest Mining Limited
H34_9775	412047	7586945	17	0.00	30	2	-	3	Newcrest Mining Limited
H34_9800	412063	7586964	24	0.00	24	2	-	1	Newcrest Mining Limited
H34_9825	412079	7586983	11	0.00	19	1	-	0	Newcrest Mining Limited
H34_9850	412095	7587002	15	0.00	15	1	-	0	Newcrest Mining Limited
H34_9875	412112	7587021	13	0.00	37	2	-	2	Newcrest Mining Limited
H34_9900	412128	7587040	15	0.00	31	2	-	1	Newcrest Mining Limited
H34_9925	412144	7587059	14	0.00	26	2	-	1	Newcrest Mining Limited
H34_9950	412160	7587078	20	0.00	47	2	-	2	Newcrest Mining Limited
H34_9975	412176	7587097	19	0.00	37	2	0.01	10	Newcrest Mining Limited
H35_10325	412343	7587137	10	0.00	13	1	-	1	Newcrest Mining Limited
H35_10350	412359	7587156	55	0.01	16	1	-	1	Newcrest Mining Limited
H35_10375	412375	7587175	16	0.00	10	0	-	2	Newcrest Mining Limited
H35_10400	412392	7587194	20	0.00	6	0	-	2	Newcrest Mining Limited

H35_10425	412408	7587213	13	0.00	10	0	-	2	Newcrest Mining Limited
H35_9225	411766	7586461	21	0.00	16	0	-	2	Newcrest Mining Limited
H35_9250	411783	7586480	28	0.00	49	5	0.03	26	Newcrest Mining Limited
H35_9275	411799	7586499	23	0.00	15	1	-	3	Newcrest Mining Limited
H35_9300	411815	7586518	19	0.00	26	1	-	2	Newcrest Mining Limited
H35_9325	411831	7586538	63	0.01	25	1	-	2	Newcrest Mining Limited
H35_9350	411847	7586557	114	0.01	27	1	-	1	Newcrest Mining Limited
H35_9375	411864	7586576	108	0.01	41	1	-	2	Newcrest Mining Limited
H35_9400	411880	7586595	75	0.01	26	2	-	1	Newcrest Mining Limited
H35_9425	411896	7586614	211	0.02	260	1	0.01	5	Newcrest Mining Limited
H35_9450	411912	7586633	360	0.04	650	2	0.01	6	Newcrest Mining Limited
H35_9475	411928	7586652	21	0.00	38	2	-	2	Newcrest Mining Limited
H35_9500	411945	7586671	18	0.00	33	3	-	3	Newcrest Mining Limited
H35_9525	411961	7586690	12	0.00	18	1	-	2	Newcrest Mining Limited
H35_9550	411977	7586709	8	0.00	98	2	0.01	5	Newcrest Mining Limited
H35_9575	411993	7586728	11	0.00	14	1	-	3	Newcrest Mining Limited
H35_9600	412009	7586747	17	0.00	38	3	-	4	Newcrest Mining Limited
H35_9625	412026	7586766	14	0.00	64	1	-	2	Newcrest Mining Limited
H35_9650	412042	7586785	19	0.00	85	1	0.01	5	Newcrest Mining Limited
H35_9675	412058	7586804	23	0.00	42	1	-	3	Newcrest Mining Limited
H35_9700	412074	7586823	62	0.01	26	1	-	3	Newcrest Mining Limited
H35_9725	412090	7586842	15	0.00	15	1	-	3	Newcrest Mining Limited
H35_9750	412107	7586861	30	0.00	34	1	-	1	Newcrest Mining Limited
H35_9775	412123	7586880	24	0.00	27	1	-	2	Newcrest Mining Limited
H35_9800	412139	7586899	24	0.00	27	1	-	2	Newcrest Mining Limited
H35_9825	412155	7586918	16	0.00	18	1	-	3	Newcrest Mining Limited
H35_9850	412171	7586937	17	0.00	21	1	-	3	Newcrest Mining Limited
H35_9875	412188	7586956	15	0.00	22	1	-	3	Newcrest Mining Limited

H35_9900	412204	7586975	16	0.00	99	3	-	2	Newcrest Mining Limited
H35_9925	412220	7586994	9	0.00	30	1	-	3	Newcrest Mining Limited
H35_9950	412236	7587013	11	0.00	22	1	-	4	Newcrest Mining Limited
H36_10350	412435	7587091	9	0.00	6	0	-	2	Newcrest Mining Limited
H36_10375	412452	7587110	27	0.00	11	0	-	3	Newcrest Mining Limited
H36_10400	412468	7587129	21	0.00	10	0	-	2	Newcrest Mining Limited
H36_10425	412484	7587148	11	0.00	4	0	-	3	Newcrest Mining Limited
H36_10450	412500	7587167	17	0.00	5	0	-	3	Newcrest Mining Limited
H36_10475	412516	7587186	20	0.00	5	0	-	3	Newcrest Mining Limited
H36_10500	412533	7587205	12	0.00	5	0	-	3	Newcrest Mining Limited
H36_10525	412549	7587225	17	0.00	10	0	-	2	Newcrest Mining Limited
H36_9325	411907	7586473	63	0.01	10	0	-	1	Newcrest Mining Limited
H36_9350	411924	7586492	25	0.00	12	0	-	0	Newcrest Mining Limited
H36_9375	411940	7586511	48	0.00	24	1	-	2	Newcrest Mining Limited
H36_9400	411956	7586530	8	0.00	12	1	-	0	Newcrest Mining Limited
H36_9425	411972	7586549	11	0.00	14	2	-	0	Newcrest Mining Limited
H36_9450	411988	7586568	13	0.00	18	1	-	2	Newcrest Mining Limited
H36_9475	412005	7586587	12	0.00	47	3	0.01	8	Newcrest Mining Limited
H36_9500	412021	7586606	11	0.00	40	3	-	2	Newcrest Mining Limited
H36_9525	412037	7586625	7	0.00	12	1	-	2	Newcrest Mining Limited
H36_9550	412053	7586644	9	0.00	17	1	-	2	Newcrest Mining Limited
H36_9575	412069	7586663	9	0.00	34	3	-	3	Newcrest Mining Limited
H36_9600	412086	7586682	9	0.00	30	1	-	2	Newcrest Mining Limited
H36_9625	412134	7586739	12	0.00	30	2	-	2	Newcrest Mining Limited
H36_9650	412118	7586720	16	0.00	23	3	-	3	Newcrest Mining Limited
H36_9675	412134	7586739	452	0.05	36	2	-	1	Newcrest Mining Limited
H36_9700	412150	7586758	99	0.01	26	2	-	1	Newcrest Mining Limited
H36_9725	412167	7586777	19	0.00	20	1	-	0	Newcrest Mining Limited

H36_9750	412183	7586796	61	0.01	53	1	-	2	Newcrest Mining Limited
H36_9775	412199	7586815	12	0.00	47	3	-	4	Newcrest Mining Limited
H36_9800	412215	7586834	10	0.00	86	3	0.04	39	Newcrest Mining Limited
H36_9825	412231	7586853	8	0.00	76	6	0.01	9	Newcrest Mining Limited
H36_9850	412248	7586873	7	0.00	98	5	0.10	97	Newcrest Mining Limited
H36_9875	412264	7586892	7	0.00	28	3	0.01	7	Newcrest Mining Limited
H36_9900	412280	7586911	8	0.00	42	1	0.01	5	Newcrest Mining Limited
H36_9925	412296	7586930	9	0.00	107	4	0.02	24	Newcrest Mining Limited
H36_9950	412312	7586949	11	0.00	25	2	-	2	Newcrest Mining Limited
H36_9975	412329	7586968	10	0.00	29	3	-	2	Newcrest Mining Limited
JM0006	433302	7574552	4	0.00	10	-	-	2	Newcrest Mining Limited
JM0012	432898	7574977	13	0.00	58	-	-	2	Newcrest Mining Limited
JM0013	433183	7575837	6	0.00	6	-	-	2	Newcrest Mining Limited
JM0018	432993	7574962	17	0.00	83	-	-	4	Newcrest Mining Limited
JM0019	433108	7574997	7	0.00	51	-	-	1	Newcrest Mining Limited
JM0020	432993	7575007	30	0.00	43	-	0.01	12	Newcrest Mining Limited
JM0021	432882	7575107	39	0.00	154	-	0.01	14	Newcrest Mining Limited
JM0022	432883	7575062	30	0.00	73	-	0.01	8	Newcrest Mining Limited
JM0027	433323	7575772	7	0.00	75	-	0.06	56	Newcrest Mining Limited
JM0028	432928	7575937	11	0.00	46	-	-	1	Newcrest Mining Limited
JM0042	435723	7572912	13	0.00	10	-	-	1	Newcrest Mining Limited
JM0071	433047	7575016	134	0.01	27	-	0.01	8	Newcrest Mining Limited
JM0073	434724	7571927	19	0.00	27	-	-	2	Newcrest Mining Limited
JM0197	418066	7581521	434	0.04	2,385	11	0.04	39	Newcrest Mining Limited
JM0197a	418066	7581521	434	0.04	2,385	11	0.04	39	Newcrest Mining Limited
JM0198	418316	7581591	11	0.00	16	-	-	2	Newcrest Mining Limited
JM0198a	418316	7581591	11	0.00	16	-	-	2	Newcrest Mining Limited
JM0199	418711	7580936	10	0.00	10	-	-	0	Newcrest Mining Limited

JM0199a	418711	7580936	10	0.00	-	-	-	0	Newcrest Mining Limited
JM0205	418156	7580706	28	0.00	13	-	-	0	Newcrest Mining Limited
JM0205a	418156	7580706	28	0.00	13	-	-	0	Newcrest Mining Limited
KG0521	417094	7588089	698	0.07	15	5	0.03	30	Newcrest Mining Limited
KG0522	417089	7588086	1,480	0.15	15	3	0.03	30	Newcrest Mining Limited
KG0523	417088	7588083	18	0.00	-	0	0.01	10	Newcrest Mining Limited
KG0524	417092	7588083	12	0.00	3	1	0.01	10	Newcrest Mining Limited
L10262	416598	7588102	-	0.00	45	-	-	3	Newcrest Mining Limited
L10263	416802	7588070	-	0.00	20	-	-	2	Newcrest Mining Limited
L10381	418811	7580901	124	0.01	-	-	-	1	Newcrest Mining Limited
L10382	418871	7580911	22	0.00	85	-	-	1	Newcrest Mining Limited
L10383	419041	7580971	21	0.00	25	-	-	1	Newcrest Mining Limited
L10482	418621	7581301	3,500	0.35	20	-	-	1	Newcrest Mining Limited
L10483	418641	7581391	2,750	0.28	85	-	0.05	47	Newcrest Mining Limited
L10492	411746	7586456	2,700	0.27	330	6	0.02	24	Newcrest Mining Limited
L10492	411746	7586456	2,700	0.27	3,900	180	1.45	1,450	Newcrest Mining Limited
L10493	413266	7585912	200	0.02	8,600	155	8.20	8,200	Newcrest Mining Limited
L10494	412242	7586402	33	0.00	120	4	0.03	33	Newcrest Mining Limited
L10495	412502	7586707	15	0.00	189	2	0.09	90	Newcrest Mining Limited
L10496	412631	7586859	46	0.00	30	-	-	4	Newcrest Mining Limited
L10497	412524	7586425	19	0.00	45	-	0.01	5	Newcrest Mining Limited
L10498	412460	7586349	250	0.03	190	3	0.03	28	Newcrest Mining Limited
L10499	412220	7586684	14	0.00	40	-	0.03	26	Newcrest Mining Limited
L10500	412067	7586814	16	0.00	85	3	0.02	16	Newcrest Mining Limited
L10501	412003	7586737	20	0.00	40	2	-	4	Newcrest Mining Limited
L10502	411915	7586943	46	0.00	25	1	0.02	19	Newcrest Mining Limited
L10503	411987	7587027	54	0.01	-	1	0.01	5	Newcrest Mining Limited
L10504	411922	7586951	155	0.02	-	-	-	2	Newcrest Mining Limited
L10507	411611	7587203	12	0.00	20	-	-	3	Newcrest Mining Limited

L10536a	415811	7585581	9	0.00	30	2	-	0	Newcrest Mining Limited
L10537	415601	7585451	9	0.00	20	2	-	0	Newcrest Mining Limited
L10539	415681	7585781	8	0.00	35	-	-	0	Newcrest Mining Limited
L10540	415721	7585881	10	0.00	25	1	-	1	Newcrest Mining Limited
L10541	415511	7585981	9	0.00	35	2	-	0	Newcrest Mining Limited
L10542	415511	7585981	6	0.00	25	1	-	0	Newcrest Mining Limited
L10543	415431	7586231	5	0.00	15	1	-	1	Newcrest Mining Limited
L10544	415431	7586231	4	0.00	5	1	-	0	Newcrest Mining Limited
L10545	415431	7586231	5	0.00	5	-	-	0	Newcrest Mining Limited
L10546	415151	7586421	5	0.00	5	1	-	0	Newcrest Mining Limited
MM012	413201	7586871	225	0.02	20	3	0.01	5	Newcrest Mining Limited
MM013	413171	7586831	30	0.00	15	3	0.01	5	Newcrest Mining Limited
MM014	413141	7586791	56	0.01	250	5	0.12	118	Newcrest Mining Limited
MM015	413111	7586761	190	0.02	25	-	-	3	Newcrest Mining Limited
MM016	413071	7586941	24	0.00	20	4	-	4	Newcrest Mining Limited
MM017	413041	7586911	25	0.00	10	3	-	2	Newcrest Mining Limited
MM018	413001	7586871	13	0.00	15	4	-	1	Newcrest Mining Limited
MM019	412971	7586831	8	0.00	15	4	-	2	Newcrest Mining Limited
MM020	412941	7586791	11	0.00	30	2	-	1	Newcrest Mining Limited
MM021	413001	7587021	5	0.00	35	2	-	3	Newcrest Mining Limited
MM022	412981	7586981	8	0.00	25	4	-	2	Newcrest Mining Limited
MM023	412941	7586941	8	0.00	20	3	0.05	48	Newcrest Mining Limited
MM024	412911	7586901	12	0.00	15	2	-	1	Newcrest Mining Limited
MM025	412881	7586861	16	0.00	15	3	-	2	Newcrest Mining Limited
MM026	412841	7586821	18	0.00	20	3	-	2	Newcrest Mining Limited
MM027	412871	7587151	11	0.00	25	3	-	3	Newcrest Mining Limited
MM028	412851	7587111	10	0.00	15	3	-	2	Newcrest Mining Limited
MM029	412811	7587071	13	0.00	20	3	-	2	Newcrest Mining Limited

PW03_001	411448	7587173	4	0.00	7	0	-	2	Newcrest Mining Limited
PW03_002	411433	7587133	14	0.00	20	1	-	4	Newcrest Mining Limited
PW03_003	411170	7586807	47	0.00	19	0	-	2	Newcrest Mining Limited
PW03_004	411288	7586968	16	0.00	8	0	0.01	11	Newcrest Mining Limited
PW03_005	411277	7586956	68	0.01	69	0	-	3	Newcrest Mining Limited
PW03_006	411267	7586936	11	0.00	81	0	-	2	Newcrest Mining Limited
PW05077	417080	7588080	1,860	0.19	372	29	0.43	429	Newcrest Mining Limited
PW05078	417097	7588062	84	0.01	2,190	6	0.11	105	Newcrest Mining Limited
PW06_105	417314	7586353	113	0.01	187	1	-	-	Newcrest Mining Limited
RJD04_001	412255	7586694	24	0.00	-	-	-	1	Newcrest Mining Limited
RJD04_002	412263	7586680	295	0.03	32	-	0.01	11	Newcrest Mining Limited
RJD04_003	412152	7586575	19	0.00	23	-	-	3	Newcrest Mining Limited
RJD04_004	411973	7586715	17	0.00	335	-	0.01	10	Newcrest Mining Limited
RJD04_005	412002	7586418	20	0.00	20	-	-	0	Newcrest Mining Limited
RJD04_024	411933	7586855	44	0.00	12	5	0.02	23	Newcrest Mining Limited
RJD05100	417066	7588051	1	0.00	9	1	0.04	40	Newcrest Mining Limited
RJD05101	417168	7588118	31	0.00	10	0	-	-	Newcrest Mining Limited
RJD05102	417072	7588114	39	0.00	14	1	-	-	Newcrest Mining Limited
RJD05103	417036	7588127	100	0.01	28	0	-	-	Newcrest Mining Limited
RJD05104	417023	7588123	105	0.01	19	1	0.31	310	Newcrest Mining Limited
RJD05106	416655	7588263	19	0.00	4	-	-	-	Newcrest Mining Limited
RJD05107	416910	7588153	276	0.03	285	4	0.57	570	Newcrest Mining Limited
RJD05108	417244	7587922	4,200	0.42	544	3	0.39	390	Newcrest Mining Limited
RJD05109	417244	7587922	23	0.00	19	1	0.02	20	Newcrest Mining Limited
RJD05128	416993	7588264	30	0.00	4	0	-	-	Newcrest Mining Limited
RJD05147	416021	7587162	7	0.00	4	0	-	-	Newcrest Mining Limited
RJD05149	416925	7588161	54	0.01	15	-	0.02	20	Newcrest Mining Limited
RJD05150	416918	7588158	345	0.03	63	1	0.08	80	Newcrest Mining Limited

RJD05151	416918	7588158	680	0.07	303	9	2.45	2,450	Newcrest Mining Limited
RJD05152	416923	7588154	60	0.01	24	0	0.04	40	Newcrest Mining Limited
RJD05153	416914	7588158	414	0.04	210	2	0.13	130	Newcrest Mining Limited
RJD05154	416911	7588153	33	0.00	14	0	0.02	20	Newcrest Mining Limited
RJD05155	416911	7588147	174	0.02	22	0	0.02	20	Newcrest Mining Limited
RJD05156	416913	7588140	314	0.03	83	1	0.17	170	Newcrest Mining Limited
RJD05157	416914	7588131	15,000	1.50	257	4	10.90	10,900	Newcrest Mining Limited
RJD05158	416920	7588126	279	0.03	158	1	0.89	890	Newcrest Mining Limited
RJD05159	416928	7588129	89	0.01	124	1	0.30	300	Newcrest Mining Limited
RJD05160	416833	7588178	22	0.00	6	1	0.02	20	Newcrest Mining Limited
RJD05161	416825	7588222	18	0.00	3	1	0.01	10	Newcrest Mining Limited
RJD05162	416829	7588239	19	0.00	3	1	0.00	0	Newcrest Mining Limited
RJD05163	416856	7588244	19	0.00	3	0	0.01	10	Newcrest Mining Limited
RJD05164	416847	7588239	17	0.00	4	0	-	-	Newcrest Mining Limited
RJD05165	416867	7588228	13	0.00	3	0	0.00	0	Newcrest Mining Limited
RJD05166	416866	7588228	26	0.00	4	-	-	-	Newcrest Mining Limited
RJD05167	416856	7588190	21	0.00	3	0	0.00	0	Newcrest Mining Limited
RJD05168	416856	7588213	46	0.00	3	0	0.01	10	Newcrest Mining Limited
RJD05169	416855	7588185	16	0.00	3	0	0.00	0	Newcrest Mining Limited
RJD05170	416852	7588185	74	0.01	3	0	0.01	10	Newcrest Mining Limited
RJD05171	416846	7588184	18	0.00	4	0	-	-	Newcrest Mining Limited
RJD05172	416848	7588181	11	0.00	-	0	-	-	Newcrest Mining Limited
RJD05173	416883	7588173	72	0.01	5	-	-	-	Newcrest Mining Limited
RJD05174	416908	7588174	58	0.01	3	0	0.00	0	Newcrest Mining Limited
RJD05175	416903	7588178	23	0.00	3	0	0.00	0	Newcrest Mining Limited
RJD05176	416900	7588178	8	0.00	3	0	0.00	0	Newcrest Mining Limited
RJD05177	416910	7588198	8	0.00	3	0	0.00	0	Newcrest Mining Limited
RJD05178	416898	7588202	162	0.02	4	0	-	-	Newcrest Mining Limited

RJD05179	416894	7588198	140	0.01	4	0	-	-	Newcrest Mining Limited	
RJD05180	416890	7588194	74	0.01	-	3	0	0.00	0	Newcrest Mining Limited
RJD05181	416897	7588192	110	0.01	7	0	-	-	Newcrest Mining Limited	
RJD05182	416891	7588188	54	0.01	4	-	-	-	Newcrest Mining Limited	
RJD05183	416891	7588186	301	0.03	-	3	0	0.06	60	Newcrest Mining Limited
RJD05184	416890	7588182	126	0.01	-	3	-	0.00	0	Newcrest Mining Limited
RJD05185	416882	7588163	65	0.01	-	3	0	0.00	0	Newcrest Mining Limited
RJD05186	416880	7588155	47	0.00	7	0	-	-	Newcrest Mining Limited	
RJD05187	416917	7588166	598	0.06	60	1	0.03	30	Newcrest Mining Limited	
RJD05188	416914	7588178	42	0.00	-	3	0	0.02	20	Newcrest Mining Limited
RJD05189	416915	7588175	270	0.03	25	1	0.24	240	Newcrest Mining Limited	
RJD05190	416921	7588183	2,130	0.21	729	16	6.04	6,040	Newcrest Mining Limited	
RJD05191	416931	7588176	1,090	0.11	18	0	0.17	170	Newcrest Mining Limited	
RJD05192	416929	7588176	1,320	0.13	401	8	0.75	750	Newcrest Mining Limited	
RJD05193	417079	7588080	1,180	0.12	339	10	0.93	931	Newcrest Mining Limited	
RJD05194	417071	7588036	45	0.00	2,560	10	0.03	28	Newcrest Mining Limited	
RJD05195	417115	7587848	30	0.00	39	1	0.02	22	Newcrest Mining Limited	
RJD05197	416735	7587905	24	0.00	20	2	0.03	26	Newcrest Mining Limited	
RJD05198	417044	7588121	257	0.03	96	0	-	-	Newcrest Mining Limited	
RJD05199	417044	7588126	29	0.00	26	0	0.01	10	Newcrest Mining Limited	
RJD05200	417040	7588127	119	0.01	61	0	-	-	Newcrest Mining Limited	
RJD05201	417034	7588135	180	0.02	48	0	0.01	10	Newcrest Mining Limited	
RJD05202	417034	7588135	264	0.03	37	0	-	-	Newcrest Mining Limited	
RJD05203	417028	7588140	31	0.00	11	0	-	-	Newcrest Mining Limited	
RJD05204	417027	7588144	8	0.00	6	0	-	-	Newcrest Mining Limited	
RJD05205	417067	7588085	11	0.00	-	3	1	0.01	10	Newcrest Mining Limited
RJD05206	417064	7588081	22	0.00	22	0	0.04	40	Newcrest Mining Limited	
RJD05207	417068	7588078	51	0.01	84	3	0.02	20	Newcrest Mining Limited	

RJD05208	417090	7588066	184	0.02	2,110	7	1.91	1,910	Newcrest Mining Limited
WA_512574	417081	7588086	2,080	0.21	111	17	0.13	130	Newcrest Mining Limited
WA_512575	417080	7588087	1,680	0.17	291	19	0.07	70	Newcrest Mining Limited
WA_512576	417079	7588088	2,190	0.22	801	31	0.07	70	Newcrest Mining Limited
WA_512577	417020	7588125	146	0.01	18	3	0.09	90	Newcrest Mining Limited
WA_512578	417022	7588122	57	0.01	11	0	0.01	10	Newcrest Mining Limited
WA_512579	417023	7588125	34	0.00	14	0	0.01	10	Newcrest Mining Limited
WA_512580	417008	7588137	104	0.01	33	3	0.04	40	Newcrest Mining Limited
<b>Newcrest Mining Limited Report Numbers:</b>									
68218, 69889, 70039, 72044, 77170, 79774, 102251, 103202, 104552, 112319, a43919 7 a70039									

## Historic Rock Chip Samples – April 2026

### Telfer South Project - Hasties Prospects

Criteria	JORC Code explanation	Commentary
<b>Sampling techniques</b>	<ul style="list-style-type: none"> <li>• <i>Nature and quality of sampling (eg cut channels, random chips, or specific specialised industry standard measurement tools appropriate to the minerals under investigation, such as down hole gamma sondes, or handheld XRF instruments, etc). These examples should not be taken as limiting the broad meaning of sampling.</i></li> <li>• <i>Include reference to measures taken to ensure sample representivity and the appropriate calibration of any measurement tools or systems used.</i></li> <li>• <i>Aspects of the determination of mineralization that are Material to the Public Report.</i></li> <li>• <i>In cases where 'industry standard' work has been done this would be relatively simple (eg 'reverse circulation drilling was used to obtain 1 m samples from which 3 kg was pulverised to</i></li> </ul>	<ul style="list-style-type: none"> <li>• Historic random orientation rock chip samples and selective rock chip samples were collected based on geological mapping and visibly mineralised outcrop or gossanous outcrops.</li> <li>• A total of 478 historic rock chip samples are reported with confirmed locations.</li> <li>• Newcrest Mining Limited from 1991 to 2016, reported that random sample locations were plotted on 1:25,000 scale colour aerial photographs and selective samples were plotted on 1:20,000 scale geological base map</li> <li>• APEX Geoscience digitised all historic rock chip sample locations from detailed cross-checked georeferenced maps.</li> </ul>

Criteria	JORC Code explanation	Commentary
	<p><i>produce a 30 g charge for fire assay’). In other cases more explanation may be required, such as where there is coarse gold that has inherent sampling problems. Unusual commodities or mineralization types (eg submarine nodules) may warrant disclosure of detailed information.</i></p>	
<p><b>Drilling techniques</b></p>	<ul style="list-style-type: none"> <li>• <i>Drill type (eg core, reverse circulation, open-hole hammer, rotary air blast, auger, Bangka, sonic, etc) and details (eg core diameter, triple or standard tube, depth of diamond tails, face-sampling bit or other type, whether core is oriented and if so, by what method, etc).</i></li> </ul>	<ul style="list-style-type: none"> <li>• No Applicable</li> </ul>
<p><b>Drill sample recovery</b></p>	<ul style="list-style-type: none"> <li>• <i>Method of recording and assessing core and chip sample recoveries and results assessed.</i></li> <li>• <i>Measures taken to maximise sample recovery and ensure representative nature of the samples.</i></li> </ul>	<ul style="list-style-type: none"> <li>• Not Applicable</li> </ul>

For personal use only

Criteria	JORC Code explanation	Commentary
	<ul style="list-style-type: none"> <li>• <i>Whether a relationship exists between sample recovery and grade and whether sample bias may have occurred due to preferential loss/gain of fine/coarse material.</i></li> </ul>	
<b>Logging</b>	<ul style="list-style-type: none"> <li>• <i>Whether core and chip samples have been geologically and geotechnically logged to a level of detail to support appropriate Mineral Resource estimation, mining studies and metallurgical studies.</i></li> <li>• <i>Whether logging is qualitative or quantitative in nature. Core (or costean, channel, etc) photography.</i></li> <li>• <i>The total length and percentage of the relevant intersections logged.</i></li> </ul>	<ul style="list-style-type: none"> <li>• Historic rock chips samples have no record of geological logging and are not appropriate for Mineral Resource Estimation, mining studies or metallurgical studies.</li> <li>• Some of the rock chip samples were geologically logged, describing alteration, mineralisation and rock type. Not all rock chip samples had geological observations noted.</li> <li>• Geological logging was qualitative in nature.</li> </ul>
<b>Sub-sampling techniques and sample preparation</b>	<ul style="list-style-type: none"> <li>• <i>If core, whether cut or sawn and whether quarter, half or all core taken.</i></li> <li>• <i>If non-core, whether riffled, tube sampled, rotary split, etc</i></li> </ul>	<ul style="list-style-type: none"> <li>• While it was not recorded in the Newcrest historic reports it is assumed that between 0.5 to 1 kg sample was collected for analysis. Samples were collected from the insitu outcrop location. This sample size is thought to be an appropriate size of sample given the mineralisation style.</li> <li>• All rock chip samples were analysed by Australian Laboratory Services Pty Ltd where they were crushed and</li> </ul>

Criteria	JORC Code explanation	Commentary
	<p><i>and whether sampled wet or dry.</i></p> <ul style="list-style-type: none"> <li><i>For all sample types, the nature, quality and appropriateness of the sample preparation technique.</i></li> <li><i>Quality control procedures adopted for all sub-sampling stages to maximise representivity of samples.</i></li> <li><i>Measures taken to ensure that the sampling is representative of the in situ material collected, including for instance results for field duplicate/second-half sampling.</i></li> <li><i>Whether sample sizes are appropriate to the grain size of the material being sampled.</i></li> </ul>	<p>pulverised to a nominal 200 microns and then digested in perchloric acid.</p>
<p><b>Quality of assay data and laboratory tests</b></p>	<ul style="list-style-type: none"> <li><i>The nature, quality and appropriateness of the assaying and laboratory procedures used and whether the technique is considered partial or total.</i></li> </ul>	<ul style="list-style-type: none"> <li>Historic rock chip samples All samples were analysed by Australian Laboratory Services Pty Ltd where they were crushed and pulverised to a nominal 200 microns and then digested in perchloric acid. Copper, lead, zinc, cobalt, bismuth, manganese, silver and arsenic were assayed by AAS and gold by fire assay before AAS determination.</li> <li>The assay method and laboratory procedures were considered appropriate for this style of mineralisation.</li> <li>No geophysical tools were used in this program.</li> </ul>

For personal use only

Criteria	JORC Code explanation	Commentary
	<ul style="list-style-type: none"> <li><i>For geophysical tools, spectrometers, handheld XRF instruments, etc, the parameters used in determining the analysis including instrument make and model, reading times, calibrations factors applied and their derivation, etc.</i></li> <li><i>Nature of quality control procedures adopted (eg standards, blanks, duplicates, external laboratory checks) and whether acceptable levels of accuracy (ie lack of bias) and precision have been established.</i></li> </ul>	<ul style="list-style-type: none"> <li>No Certified Reference Materials (CRM's) were documented in the historic reports.</li> </ul>
<p><b>Verification of sampling and assaying</b></p>	<ul style="list-style-type: none"> <li><i>The verification of significant intersections by either independent or alternative company personnel.</i></li> <li><i>The use of twinned holes.</i></li> <li><i>Documentation of primary data, data entry procedures, data verification, data storage (physical and</i></li> </ul>	<ul style="list-style-type: none"> <li>Consultant geologists, from Apex Geoscience ("Apex"), were involved in the collation of the historic data and the process of data capture including sample location verification, assay confirmation from historic certified assay results from Australian Laboratory Services Pty Ltd.</li> <li>No Twin holes are reported.</li> <li>Rock chips were assayed and reported by Australian Laboratory Services Pty Ltd and no adjustment of data was undertaken.</li> <li>All assay results were verified by company personnel and the Qualified Person before release.</li> </ul>

For personal use only

Criteria	JORC Code explanation	Commentary
	<p><i>electronic) protocols.</i></p> <ul style="list-style-type: none"> <li>• <i>Discuss any adjustment to assay data.</i></li> </ul>	
<b>Location of data points</b>	<ul style="list-style-type: none"> <li>• <i>Accuracy and quality of surveys used to locate drill holes (collar and down-hole surveys), trenches, mine workings and other locations used in Mineral Resource estimation.</i></li> <li>• <i>Specification of the grid system used.</i></li> <li>• <i>Quality and adequacy of topographic control.</i></li> </ul>	<ul style="list-style-type: none"> <li>• The Newcrest 1991 rock chip sampling, reported that random sample locations were plotted on 1:25,000 scale colour aerial photographs and selective samples were plotted on 1:20,000 scale geological base map. These were then registered and the sample locations were digitised from these maps. The accuracy of these sample locations is thought to be +/-10m.</li> <li>• The Newcrest 1994 sampling was picked up by a handheld GPS (Garmin GPS 100 survey unit). However, these locations had to be digitised from registering historic maps showing the rock chip sample locations. The accuracy of these sample locations is thought to be +/-10m.</li> <li>• APEX Geoscience digitised all historic rock chip sample locations from detailed cross-checked georeferenced maps</li> <li>• Grid projection is MGA94, Zone 51.</li> <li>• Elevation data for the rock chip samples were populated from a digital Elevation Model created from drill hole survey locations The accuracy of the DTM is estimated to be better than 5m</li> </ul>
<b>Data spacing and distribution</b>	<ul style="list-style-type: none"> <li>• <i>Data spacing for reporting of Exploration Results.</i></li> <li>• <i>Whether the data spacing and distribution is sufficient to establish the degree of geological and grade continuity appropriate for the Mineral Resource and Ore Reserve</i></li> </ul>	<ul style="list-style-type: none"> <li>• Historic data spacing is based on detailed geological mapping (1:20,000) and is considered appropriate for the type of sample collected. Spacing varies from 10m to 200m spacing, but typically 10 to 20m spacing.</li> <li>• No compositing was applied by Newcrest to the historic data</li> <li>• Rock chip data will not be used in any Mineral Resource Estimation calculations.</li> <li>• No data compositing has been conducted.</li> </ul>

Criteria	JORC Code explanation	Commentary
	<p><i>estimation procedure(s) and classifications applied.</i></p> <ul style="list-style-type: none"> <li>• <i>Whether sample compositing has been applied.</i></li> </ul>	
<b>Orientation of data in relation to geological structure</b>	<ul style="list-style-type: none"> <li>• <i>Whether the orientation of sampling achieves unbiased sampling of possible structures and the extent to which this is known, considering the deposit type.</i></li> <li>• <i>If the relationship between the drilling orientation and the orientation of key mineralised structures is considered to have introduced a sampling bias, this should be assessed and reported if material.</i></li> </ul>	<ul style="list-style-type: none"> <li>• The historic data was collected on a local grid oriented 130° (magnetic) following to overall strike of mineralisation. Rock chip samples fall within the grid baseline orientation.</li> </ul>
<b>Sample security</b>	<ul style="list-style-type: none"> <li>• <i>The measures taken to ensure sample security.</i></li> </ul>	<ul style="list-style-type: none"> <li>• Sample security measures adopted by Newcrest personnel was not document in the historic report.</li> </ul>
<b>Audits or reviews</b>	<ul style="list-style-type: none"> <li>• <i>The results of any audits or reviews of sampling techniques and data.</i></li> </ul>	<ul style="list-style-type: none"> <li>• No formal audits or reviews have been performed on the project, to date. However, where applicable historic data has been assessed on current industry standards.</li> <li>• Verification work was carried out by reputable companies using industry best practice.</li> </ul>

## Section 2 Reporting of Exploration Results

(Criteria listed in the preceding section also apply to this section.)

Criteria	JORC Code explanation	Commentary
<b>Mineral tenement and land tenure status</b>	<ul style="list-style-type: none"> <li><i>Type, reference name/number, location and ownership including agreements or material issues with third parties such as joint ventures, partnerships, overriding royalties, native title interests, historical sites, wilderness or national park and environmental settings.</i></li> <li><i>The security of the tenure held at the time of reporting along with any known impediments to obtaining a licence to operate in the area.</i></li> </ul>	<ul style="list-style-type: none"> <li>The historic rock chip samples were collected over tenements E 45/4336, E 45/4568, P 45/2983 and P 45/2929, which is held 100% by SOUTH TELFER MINING PTY LTD, a 100% owned subsidiary of Rincon Resources Ltd.</li> <li>The Project is located 260km ESE of Marble Bar in Western Australia.</li> <li>The tenements subject to this report are in good standing with the Western Australian Department of Mines &amp; Petroleum.</li> </ul>
<b>Exploration done by other parties</b>	<ul style="list-style-type: none"> <li><i>Acknowledgment and appraisal of exploration by other parties.</i></li> </ul>	<ul style="list-style-type: none"> <li>The majority of past exploration work at the Hasties deposit has been completed by Rincon Resources which comprises RAB, RC and diamond drilling. Newcrest Mining completed the early work on the project that identified outcropping gold and copper mineralisation. The reports are available on the West Australian Mines Department WAMEX open file library.</li> <li>Where relevant, assay data from this earlier exploration has been incorporated into Company databases.</li> </ul>
<b>Geology</b>	<ul style="list-style-type: none"> <li><i>Deposit type, geological setting and style of mineralization.</i></li> </ul>	<ul style="list-style-type: none"> <li>The Hasties mineralisation is interpreted to be associated with a significant anticline fold hinge zone. Geological interpretation indicates steep dipping mineralised structures are controlling gold mineralisation whilst copper mineralisation appears to be primarily controlled by fold structures within a preferred rock type. The overall mineral system has been broadly defined over a combined strike up to ~700m long, over 100m depth starting from surface, and widths up to 50m near surface.</li> </ul>
<b>Drill hole Information</b>	<ul style="list-style-type: none"> <li><i>A summary of all information material to the understanding of the exploration results including a tabulation of the following information for all Material drill holes:</i> <ul style="list-style-type: none"> <li><i>easting and northing</i></li> </ul> </li> </ul>	<ul style="list-style-type: none"> <li>Not Applicable as no drilling is reported.</li> <li>A table of all historic rock chip samples has been included in this ASX announcement.</li> </ul>

Criteria	JORC Code explanation	Commentary
	<p><i>of the drill hole collar</i></p> <ul style="list-style-type: none"> <li>○ <i>elevation or RL (Reduced Level – elevation above sea level in metres) of the drill hole collar</i></li> <li>○ <i>dip and azimuth of the hole</i></li> <li>○ <i>down hole length and interception depth</i></li> <li>○ <i>hole length.</i></li> <li>● <i>If the exclusion of this information is justified on the basis that the information is not Material and this exclusion does not detract from the understanding of the report, the Competent Person should clearly explain why this is the case.</i></li> </ul>	
<p><b>Data aggregation methods</b></p>	<ul style="list-style-type: none"> <li>● <i>In reporting Exploration Results, weighting averaging techniques, maximum and/or minimum grade truncations (eg cutting of high grades) and cut-off grades are usually Material and should be stated.</i></li> <li>● <i>Where aggregate intercepts incorporate short lengths of high grade results and longer lengths of low grade results, the procedure used for such aggregation should be stated and some typical examples of such aggregations should be shown in detail.</i></li> <li>● <i>The assumptions used for any reporting of</i></li> </ul>	<ul style="list-style-type: none"> <li>● No weighted intersections or modifications to the original data has been conducted.</li> <li>● No high cuts have been applied.</li> <li>● Metal equivalent values are not being reported.</li> </ul>

For personal use only

Criteria	JORC Code explanation	Commentary
	<i>metal equivalent values should be clearly stated.</i>	
<b>Relations hip between mineraliza tion widths and intercept lengths</b>	<ul style="list-style-type: none"> <li>• <i>These relationships are particularly important in the reporting of Exploration Results.</i></li> <li>• <i>If the geometry of the mineralization with respect to the drill hole angle is known, its nature should be reported.</i></li> <li>• <i>If it is not known and only the down hole lengths are reported, there should be a clear statement to this effect (eg 'down hole length, true width not known').</i></li> </ul>	<ul style="list-style-type: none"> <li>• No drilling report.</li> </ul>
<b>Diagrams</b>	<ul style="list-style-type: none"> <li>• <i>Appropriate maps and sections (with scales) and tabulations of intercepts should be included for any significant discovery being reported These should include, but not be limited to a plan view of drill hole collar locations and appropriate sectional views.</i></li> </ul>	<ul style="list-style-type: none"> <li>• Appropriate plans and sections have been included in this press release.</li> </ul>
<b>Balanced reporting</b>	<ul style="list-style-type: none"> <li>• <i>Where comprehensive reporting of all Exploration Results is not practicable, representative reporting of both low and high grades and/or widths should be practiced to avoid misleading reporting of Exploration Results.</i></li> </ul>	<ul style="list-style-type: none"> <li>• A table containing all historic rock chip results has been included in the release.</li> </ul>
<b>Other substanti ve</b>	<ul style="list-style-type: none"> <li>• <i>Other exploration data, if meaningful and material, should be reported including (but not limited to):</i></li> </ul>	<ul style="list-style-type: none"> <li>• Rincon Resources just completed an aerial Mobile Magento-Telluric (MMT) over the project area. The result of this work is still pending at this stage. MMT is a passive geophysical method which uses natural time variations of the earth's magnetic and electric fields to measure the electrical resistivity of the sub</li> </ul>

Criteria	JORC Code explanation	Commentary
<b>exploratio n data</b>	<i>geological observations; geophysical survey results; geochemical survey results; bulk samples – size and method of treatment; metallurgical test results; bulk density, groundwater, geotechnical and rock characteristics; potential deleterious or contaminating substances.</i>	surface.
<b>Further work</b>	<ul style="list-style-type: none"> <li>• <i>The nature and scale of planned further work (eg tests for lateral extensions or depth extensions or large-scale step-out drilling).</i></li> <li>• <i>Diagrams clearly highlighting the areas of possible extensions, including the main geological interpretations and future drilling areas, provided this information is not commercially sensitive.</i></li> </ul>	<ul style="list-style-type: none"> <li>• The company is currently reviewing and compiling the historic work in detail to build on Rincons database and geological and mineralisation models in order to plan the 2026 drilling program.</li> </ul>

For personal use only