

GoldArc
RESOURCES



Exploration Drives Value

Ignite Hong Kong Investor Presentation
April 2026

ASX:GA8

Personal use only



This presentation prepared by GoldArc Resources Limited ("Company") does not purport to contain all the information that a prospective investor may require in connection with any potential investment in the Company. You should not treat the contents of this presentation, or any information provided in connection with it, as financial advice, financial product advice or advice relating to legal, taxation or investment matters. No representation or warranty, express or implied, is made as to the fairness, accuracy, completeness or correctness of the information, opinions and conclusions contained in this presentation. This presentation is provided expressly on the basis that you will carry out your own independent inquiries into the matters contained in the presentation and make your own independent decisions about the affairs, financial position or prospects of the Company. The Company reserves the right to update, amend or supplement the information at any time in its absolute discretion (without incurring any obligation to do so). To the maximum extent permitted by law, none of the Company its directors, employees or agents, advisers, nor any other person accepts any liability, including, without limitation, any liability arising from fault or negligence on the part of any of them or any other person, for any loss arising from the use of this presentation or its contents or otherwise arising in connection with it. This presentation is not an offer, invitation, solicitation or other recommendation with respect to the subscription for, purchase or sale of any security, and neither this presentation nor anything in it shall form the basis of any contract or commitment whatsoever.

This presentation may contain forward looking statements that are subject to risk factors associated with mineral exploration, mining and production businesses. It is believed that the expectations reflected in these statements are reasonable but they may be affected by a variety of variables and changes in underlying assumptions which could cause actual results or trends to differ materially, including but not limited to price fluctuations, actual demand, currency fluctuations, drilling and production results, reserve estimations, loss of market, industry competition, environmental risks, physical risks, legislative, fiscal and regulatory changes, economic and financial market conditions in various countries and regions, political risks, project delay or advancement, approvals and cost estimates. This presentation also contains reference to certain intentions, expectations, future plans, strategy and prospects of the Company. Those intentions, expectations, future plans, strategy and prospects may or may not be achieved. They are based on certain assumptions, which may not be met or on which views may differ and may be affected by known and unknown risks. In particular, there is a risk that the Company will not be able to expand or upgrade its existing JORC resource. The performance and operations of the Company may be influenced by a number of factors, many of which are outside the control of the Company.

No representation or warranty, express or implied, is made by the Company, or any of its directors, officers, employees, advisers or agents that any intentions, expectations or plans will be achieved either totally or partially or that any particular rate of return will be achieved. Given the risks and uncertainties that may cause the Company's actual future results, performance or achievements to be materially different from those expected, planned or intended, recipients should not place undue reliance on these intentions, expectations, future plans, strategy and prospects.

The Company does not warrant or represent that the actual results, performance or achievements will be as expected, planned or intended. These forward-looking statements are expressed in good faith and believed to have a reasonable basis.

These statements reflect current expectations, intentions or strategies regarding the future and assumptions based on currently available information. Should one or more risks or uncertainties materialise, or should underlying assumptions prove incorrect, actual results may vary from the expectations, intentions and strategies described in this announcement. The forward-looking statements are made as at the date of this announcement and the Company disclaims any intent or obligation to update publicly such forward looking statements, whether as the result of new information, future events or results or otherwise.

Competent Persons Statement

The information in this report as it relates to exploration results and geology is based on and fairly represents, information and supporting documentation that was compiled by Mr. Ziggy Lubieniecki, who is a director and shareholder of the Company has sufficient experience which is relevant to the styles of mineralisation and types of deposit under consideration and to the activities which he is undertaking to qualify as a Competent Person as defined in the 2012 Edition of the Australasian Code for Reporting of Exploration Results, Mineral Resources and Ore Reserves'. Mr. Lubieniecki consents to the inclusion in the report of the matters based on the information in the form and context in which it appears..

The information in this announcement that relates to the Orion-Sapphire Mineral Resources is contained in the ASX announcements released on 28 May 2024. The information in this announcement that relates to the gold Mineral Resources for the Mt Stirling Project is contained in the ASX announcements released on 25 February 2019, 29 January 2020 and 5 September 2022. The Company confirms that it is not aware of any new information or data that materially affects the information in the relevant market announcements, and that all material assumptions and technical parameters underpinning the estimates in the relevant announcement continue to apply and have not materially changed. that the Company confirms that the form and context in which the Competent Persons findings are presented have not been materially modified from the original announcements.

Where the Company refers to exploration results in this announcement (referencing previous releases made to the ASX), the Company confirms that it is not aware of any new information or data that materially affects the information included in the original market announcements. The Company confirms that the form and context in which the Competent Person's findings are presented have not been materially modified from the original market announcement.



Strategic Location

1,200km² across >75 km of strike in the Leonora-Kookynie belt – one of Australia's most prolific gold corridors.



Near-Term Value

Existing JORC MRE's provide near-term production optionality via the strategic Mining Partnerships, balancing risk with discovery upside.



Aggressive Strategy

Systematic RC, AC & diamond drilling – 9 anomalies defined, +24,000m drilled in 12 months, +52,000m drilling planned or underway.



Proven Team

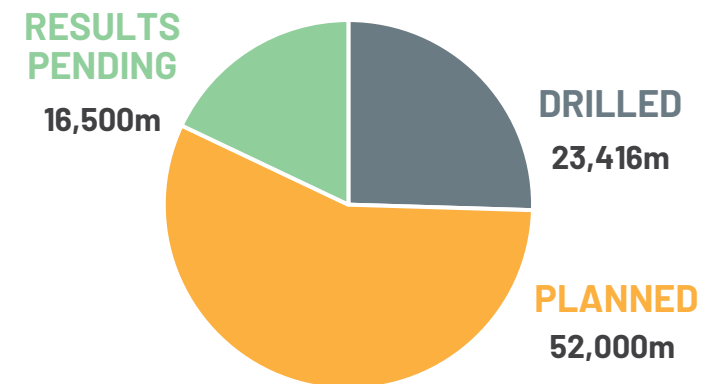
Led by an experienced Board and technical team with a track record of major gold discoveries in WA – inc Gold Road's Gruyere deposit.



Discovery Pipeline

Extensive pipeline of discovery targets: Eclipse **14m @ 7.49g/t**, Aurora **3m @ 4.91g/t**, Woodpecker **3m @ 4.89g/t**, Whistler **1m @ 25.21g/t**, Mt Stirling **10m @ 8.04g/t**, **7m @ 9.44g/t** & **9m @ 6.32g/t**

Drill Metres FY25-26 Total 75,000+



ersonal use only

\$37.8M
MARKET
CAP

as at 9 Apr 2026 @ \$0.061

~\$1.2M
CASH

as at 31 Dec 2025

~572.5M
SHARES
ON ISSUE

52.5M
UNLISTED
OPTIONS

Ex Price: \$0.10, Exp: 2 Sep 2027
Ex Price: \$0.40, Exp: 23 Jun 2026

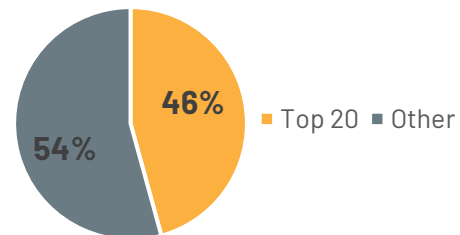
~193M
LISTED
OPTIONS

Ex Price: \$0.04, Exp: 30 Jun 2028

46.25M
PERFORMANCE
RIGHTS

Based on share price milestones

Shareholders



Board & Management

Skilled in taking high grade, economic resources from discovery through to production

Paul Stephen
Managing
Director



- Co-founder & exec Director of Crusader Resources Ltd (2.8Moz Au)
- Strong record of delivering projects from discovery to production
- In-depth experience in commercial and corporate

Paul Summers
Non-Executive
Chairman



- +35 years experience legal practitioner
- Lead Counsel and founder of Summers Legal Pty Ltd
- Advised complex transactions, joint ventures, financing, and more

Ziggy Lubieniecki
Executive
Technical Director



- +30 years exploration and mining experience
- Held senior positions at Plutonic, Australian Platinum Mines and Gold Road Resources
- Successes include discovery of the 6.2Moz Gruyere gold deposit

Leonard Math
Non-Executive
Director, CoSec
& CFO



- +15 years resources experience
- Co-Sec, CFO and Director roles for multiple ASX companies
- Chartered accountant including audit experience with Deloitte

Technical Team

Highly experienced exploration and complimentary specialist skills

Austin Gow
Senior
Geologist

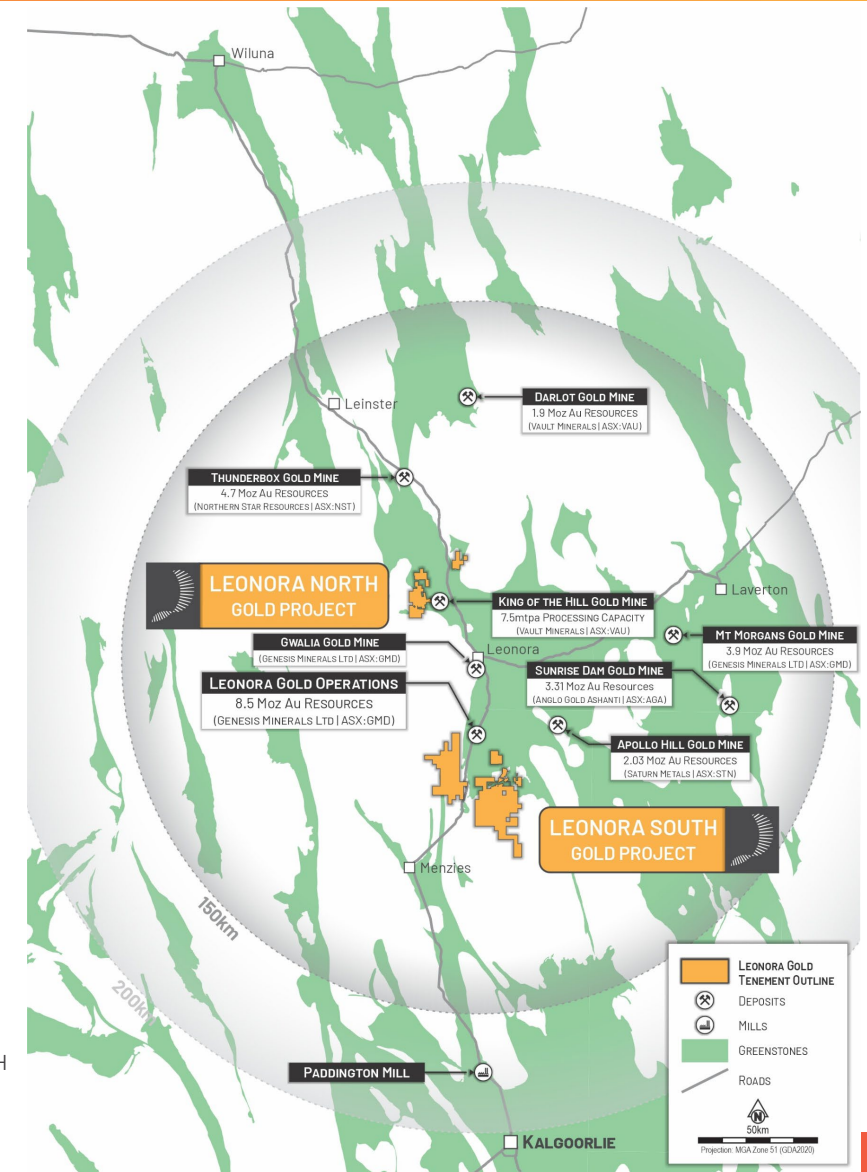


- +6 years experience with ASX-listed explorations and development companies
- Lead greenfields and brownfields exploration programs across gold and base metals

LEONORA GOLD PROJECT A Premier Gold Region

- 1,200km² covering two active exploration and development hubs over +75km of underexplored prospective strike.
- Existing JORC Mineral Resource of **200koz at 1.8 g/t Au¹**, incl high-grade zones.
- Massive volume of historic workings across both projects, with areas of limited to no modern exploration.
- Significant potential for new discoveries, ounces around known resources and resource growth.
- 12 granted EIs, 14 granted MLs, 71 granted PL's and 17 applications.
- Tier-1 nearby operating gold mines and major deposits share key geological settings:

- **GENESIS MINERALS (ASX:GMD): \$7.04B MC***
Leonora Operations (8.5 Moz Au Resources)²
- **VAULT MINERALS (ASX:VAU): \$4.97B MC***
Darlot Gold Mine (1.9 Moz Au Resources)³
King of the Hills mine (7.5 Mtpa Processing Capacity)⁴
- **NORTHERN STAR RESOURCES (ASX:NST): \$35.38B MC***
Thunderbox Mine (4.7Moz Au Resources)⁵



1. See Slide 18 for JORC Mineral Resource Table

2. Genesis Minerals Ltd (ASX:GMD) ASX announcement 21 August 2025 "Annual Report"

3. Vault Minerals Ltd (ASX:VAU) ASX announcement 15 September 2025 "Resource and Reserve Statement"

4. Vault Minerals Ltd (ASX:VAU) ASX announcement 26 May 2025 "KoTH open pit Ore Reserve growth underpins Stage 2 plant upgrade"

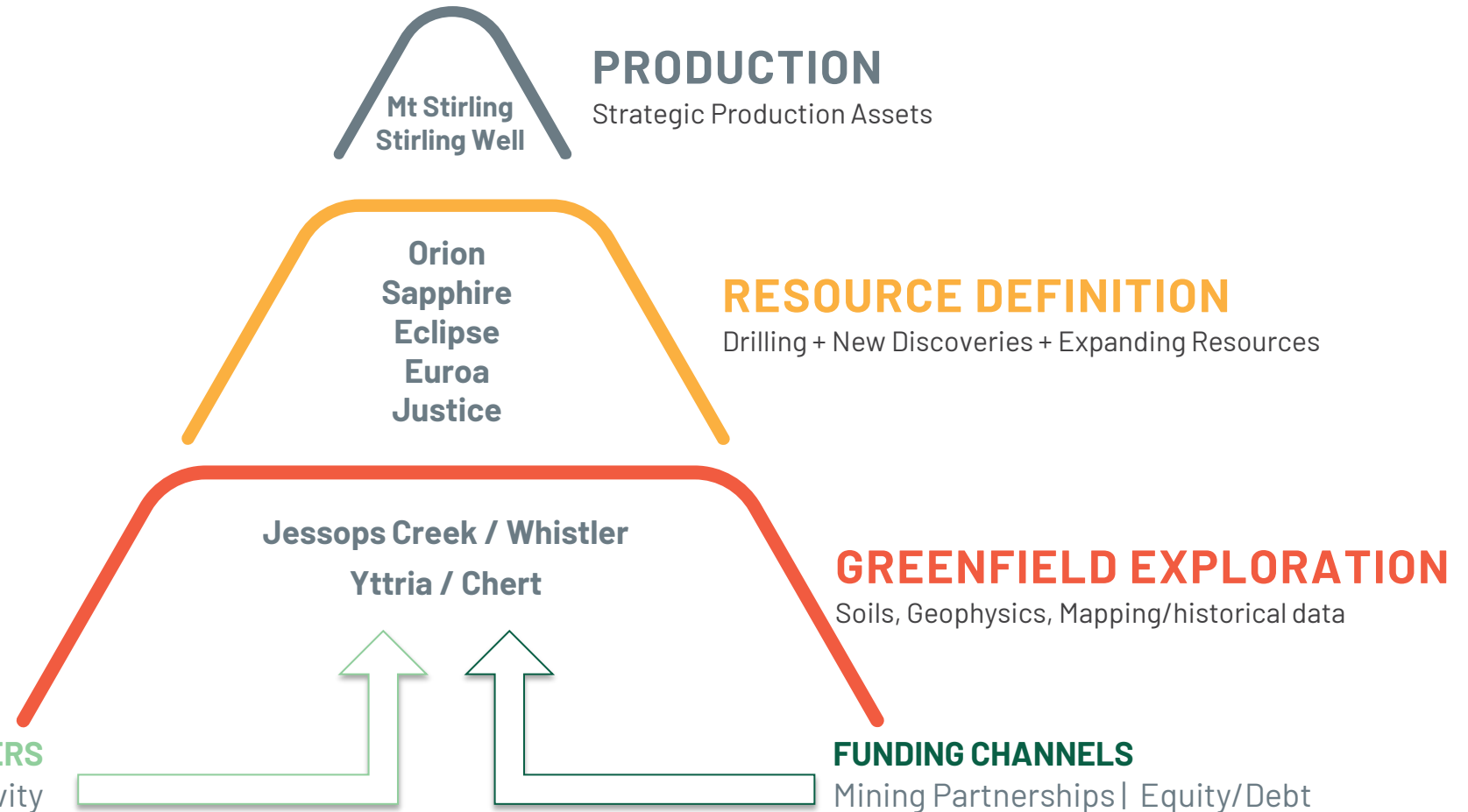
5. Northern Star Resources Ltd (ASX:NST) ASX announcement 21 August 2025 "Annual Report"

* Market Capitalisation as at 8 October 2025

Personal use only

Systematic pipeline from grassroots exploration through to development

ersonal use only



Exploration Momentum



~24,000m
Drilled

1,463
Soil Samples

9
Anomalies

~52,000m
Planned Drilling

COMPLETED

MAR 2025 – MAR 2026

Leonora South

Orion-Sapphire RC + Diamond 14m @ 7.49 g/t Au¹

Cosmopolitan-Altona AC 57 holes, 1,683m

Eclipse-Challenge RC New discovery

2nd RC Program 1,823m drilled

Jessop's/Whistler Soil + AC, 1.3km anomaly

Leonora North

Litho-structural Interp (SGC) 15 priority targets

902-Sample Soil 5 anomalies, 541ppb Au peak²

317-Sample Soil 2 new anomalies, 51.9 g/t Au³

1. ASX Announcement 2 October 2025 "Gold System Confirmed at Eclipse & Challenge Prospects"

2. ASX announcement 9 February 2026 "GoldArc Makes a Strong Start to 2026 with Aggressive Exploration at the Leonora North Gold Project"

IN PROGRESS + PLANNED

MAR 2026+

Underway

6,000m RC – Leonora South Eclipse, Cosmopolitan + more

3,000m AC – Whistler & Altona New discovery footprint

PQ Diamond DDH – Mt Stirling Geotech + met for mining plan

Current Operations Q2 2026

30,000m RC – Mt Stirling Major resource development

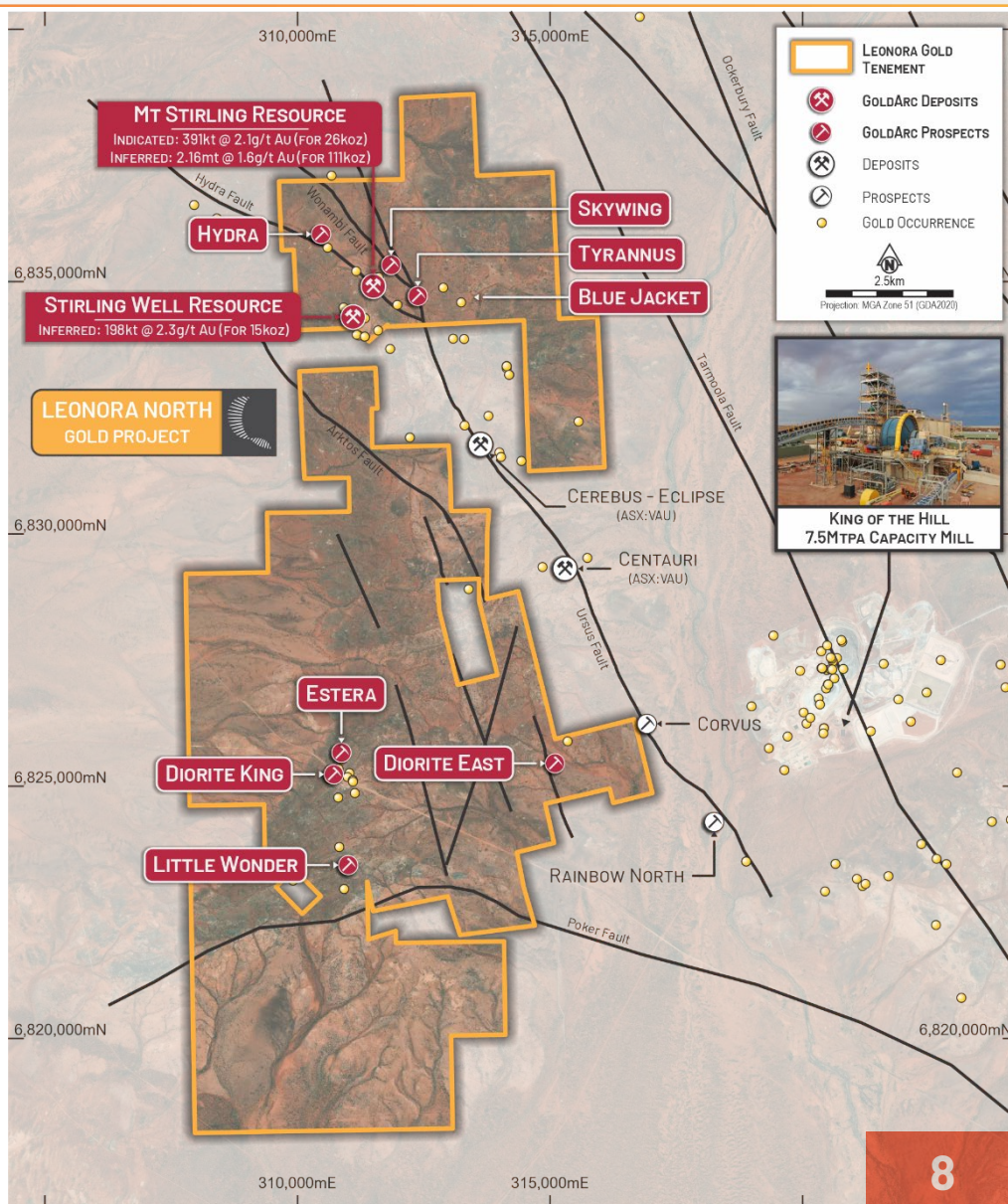
6,500m RC – Leonora South Multiple new targets

RC Follow-Up – S4, S6, S7 Drill-ready targets

Eclipse-Challenge Maiden MRE Key re-rating catalyst

Leonora North Gold Project (100% GA8)

- 40km NE of Leonora, and 3km from 7.5mt King of the Hills gold mine¹.
- Existing a combined gold JORC Mineral Resource of **152,000oz @ 1.7g/t Au²**.
- ~12km of fertile ground along the fertile Ursus Fault Line, with ~9km of this area still to be drill tested.
- Ursus-Hydra Fault and associated splays currently contain >300k Oz Au (Mt Stirling, Centauri and Cerebus Deposits).
- Multiple drill-ready targets identified from systematic soil work and reinterpretation.

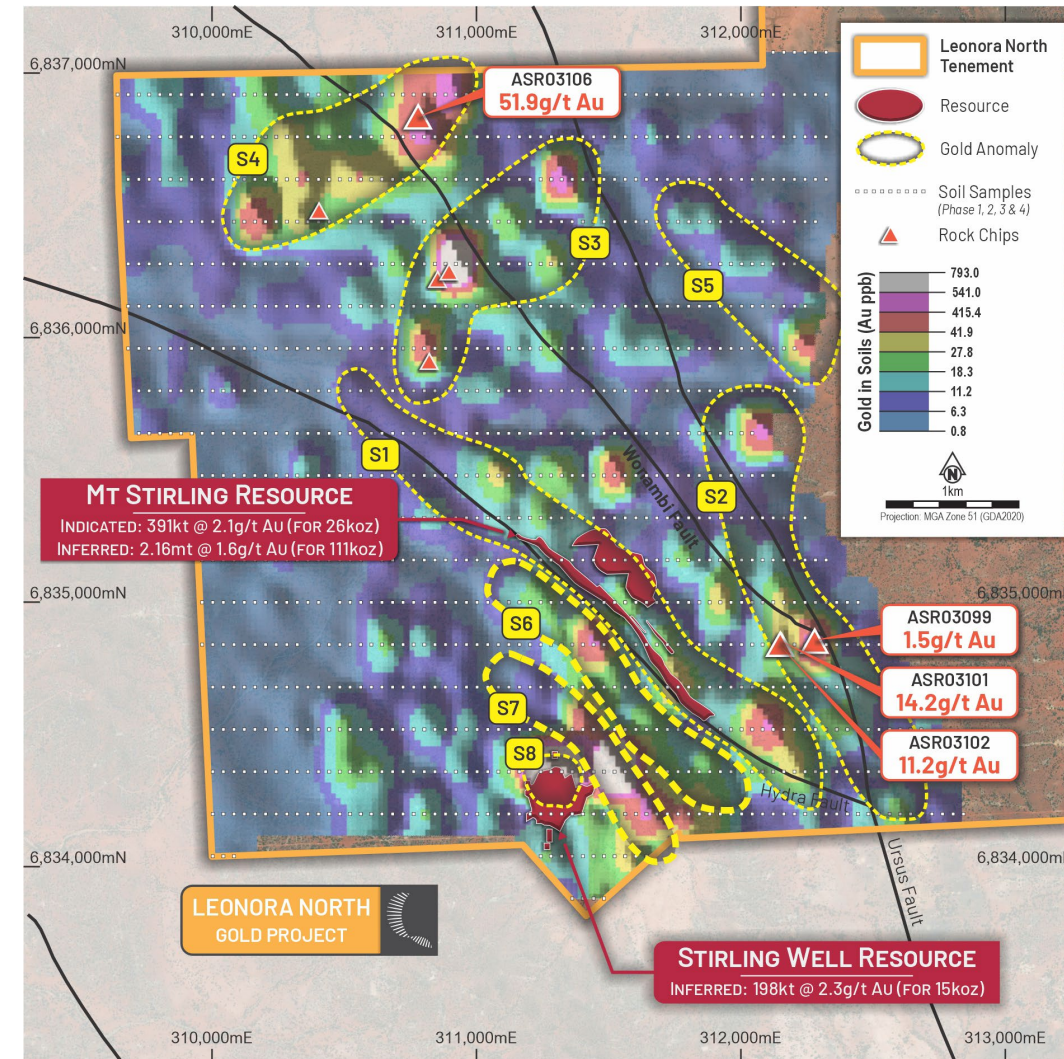


1. Vault Minerals Ltd (ASX:VAU) ASX announcement 15 September 2025 "Resource and Reserve Statement"
 2. See Slide 18 for JORC Mineral Resource Table
 3. Genesis Minerals Ltd (ASX:GMD) ASX announcement 21 August 2025 "Annual Report"

ersonal use only

LEONORA NORTH Multiple New Gold Anomalies

- 902 samples across Leonora North. Eight gold-in-soil anomalies identified (S1-S8).
- **S1-S2:** Correlate with the Mt Stirling-Hydra-Tyrannus structural corridor.
- **S3-S5:** Define new walk-up drill targets. S4 anomaly priority target for the next RC drilling round.
- **S6:** High-priority ~1.1 km anomaly, ~150 m SW of (and parallel to) the Mt Stirling Gold Deposit.
- **S7:** ~700 m long with maximum grade **>793 ppb Au**.
- Significant results include:
 - **51.9g/t Au** (ASR03106)
 - **11.2g/t Au** (ASR03102)
 - **14.2g/t Au** (ASR03101)
 - **1.5g/t Au** (ASR03099)
- Ongoing soil program continues to add additional targets.



1. ASX announcement 9 February 2026 "GoldArc Makes a Strong Start to 2026 with Aggressive Exploration at the Leonora North Gold Project"

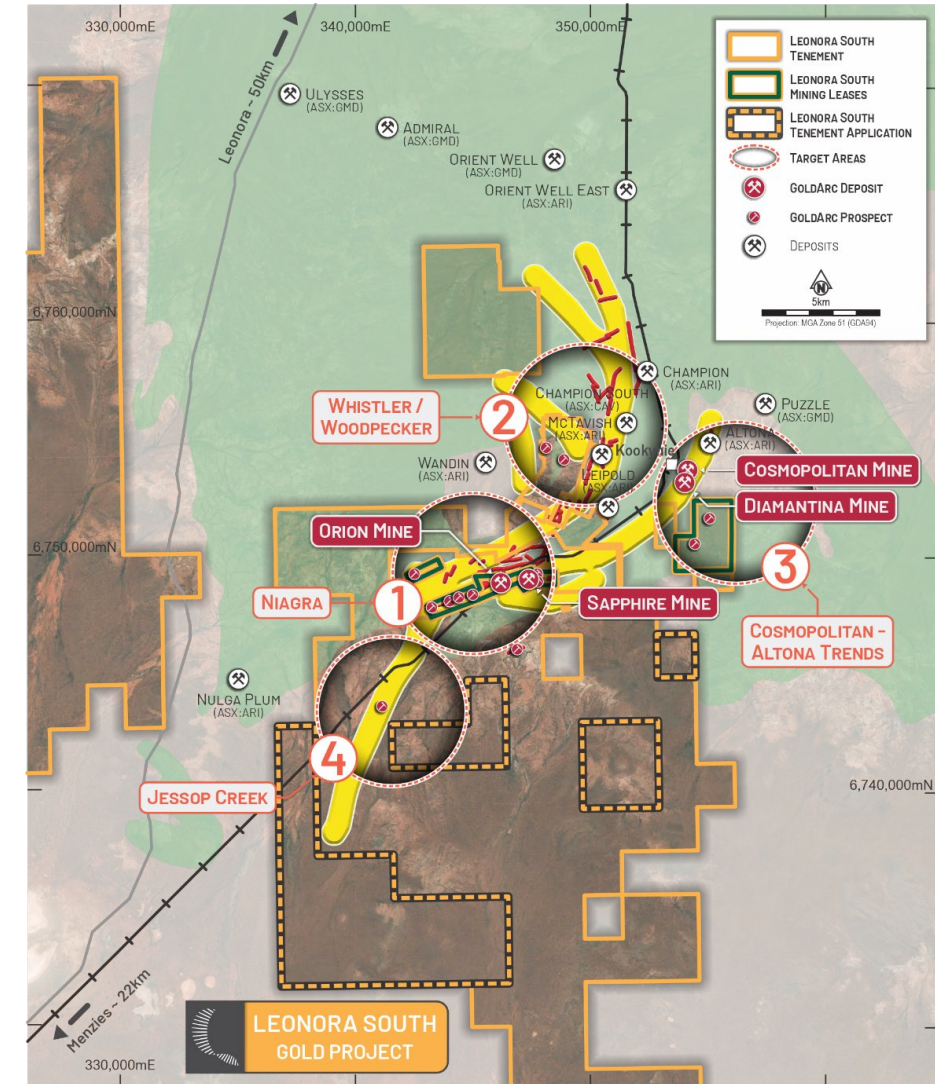
LEONORA SOUTH High-Grade Discovery Hub



Leonora South Gold Project

- > ~50km S of Leonora within a major structural corridor of the Norseman-Wiluna Greenstone belt near major gold deposits - **Genesis (ASX:GMD) 0.85Moz Ulysses, 0.58Moz Admiral and 0.30Moz Orient Well deposits¹**
- > 9,000m+ of RC and AC drilling underway now – results flowing in 2026
- > Key Prospects & Targets
 1. **Niagara Gold Trend** Multiple high-priority untested targets, 808 ppb Au soil anomaly. **Eclipse discovery** 14m @ 7.49 g/t Au², maiden MRE advancing. **Orion & Sapphire** ~48koz JORC resource³; MMS-funded development. 6,600m RC currently underway.
 2. **Whistler/Woodpecker** 89 ppb Au soil peak, 3,000m Ac / 1,200m RC drilling completed, **results pending**.
 3. **Cosmopolitan** - Historic channel sampling data identified remnant high-grade mineralisation **avg grade of 38.38 g/t Au over an avg width of 1.07m⁴**. 2000m RC completed, **results pending**.
 4. **Jessop's Creek** - First pass AC intercepted significant polymetallic mineralisation.

1. Genesis Minerals Ltd (ASX:GMD) ASX announcement 21 August 2025 "Annual Report"
2. ASX Announcement 2 October 2025 "Gold System Confirmed at Eclipse & Challenge Prospects"
3. See Slide 18 for JORC Mineral Resource Table
4. ASX announcement 20 October 2025 "Exceptional High-Grade Gold Identified in Historical Data review at Cosmopolitan Mine"

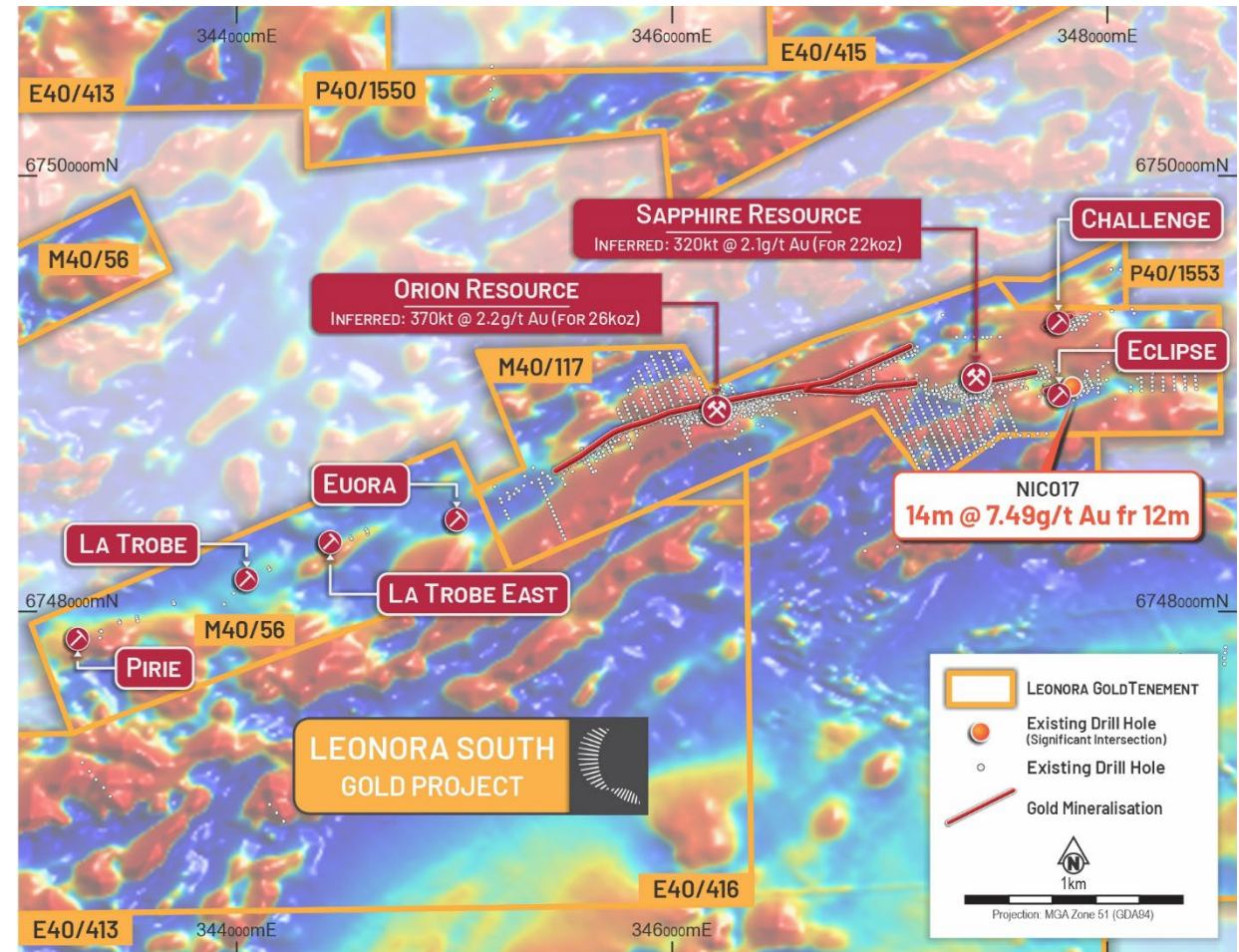


LEONORA SOUTH 1. Niagara Gold Trend

ersonal use only

- 5km of continuous under ground workings mined between 1886 – 1940 with limited historic shallow drilling.
- Magnetic anomaly identified which are associated with mafic host rocks.
- Underexplored prospects (Euroa, La Trobe and Pirie) including a 5km-long line of historical workings on M40/56 & M40/117.
- Follows up on significant July 2025 intercepts at Eclipse including **14m @ 7.49 g/t Au from 12m (NIC017)**¹.
- Drilling underway as part of MMS ~6,000m RC program targeting five key prospect areas:
 - Eclipse, Challenge
 - Orion and Sapphire depth/strike extensions,
 - Surrounding untested targets
- Results expected to flow progressively through Q1-Q2 2026.

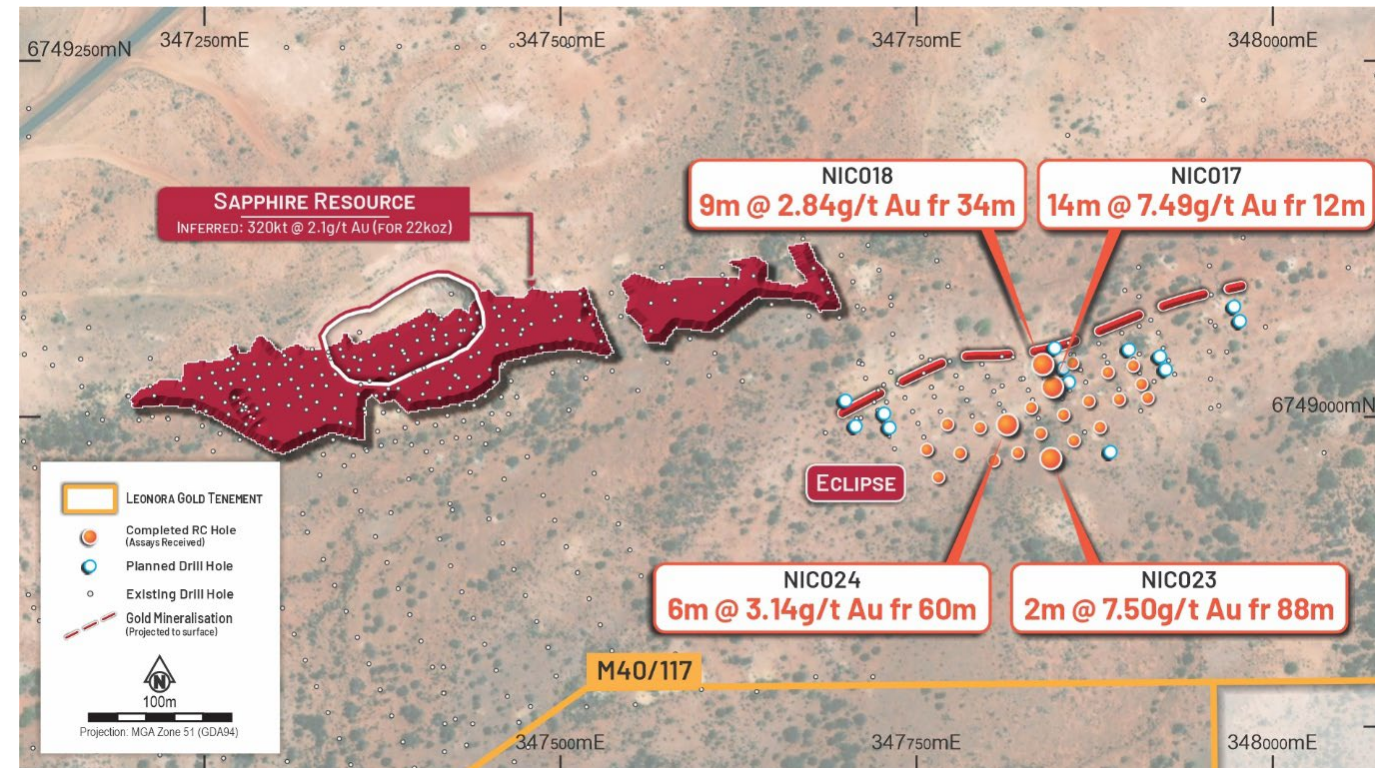
Stacked Offset Veining at Niagara Target Area



1. ASX Announcement 2 October 2025 "Gold System Confirmed at Eclipse & Challenge Prospects"

Eclipse Discovery 2025

- Confirmed high-grade gold system along strike from JORC 2012 MRE of **21,600oz at 2.1g/t¹ Au** at Sapphire.
- High-grade, near-surface gold intersections including²:
 - **14m at 7.49 g/t Au from 12m** in hole NIC017
 - **9m at 2.84 g/t Au from 34m** in hole NIC018
 - **2m at 7.50 g/t Au from 88m** in hole NIC023
 - **6m at 3.14 g/t Au from 60m** in hole NIC024
- Follow-up RC to define full extent of high-grade mineralisation.
- Drilling underway targeting depth & strike extensions toward maiden MRE - targeted Q2 CY2026.

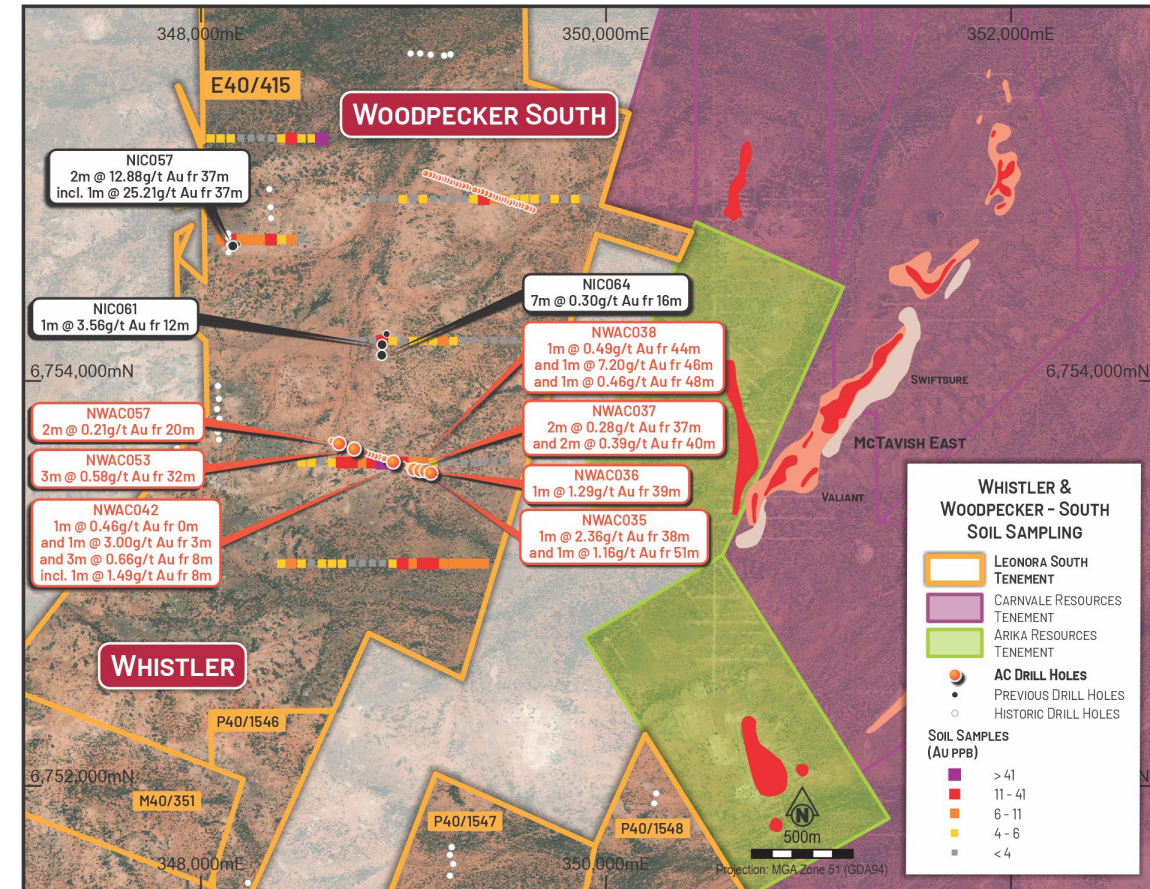


¹ See Slide 18 for JORC Mineral Resource Table

² ASX Announcement 2 October 2025 "Gold System Confirmed at Eclipse & Challenge Prospects"

LEONORA SOUTH 2. Whistler/Woodpecker

- Maiden AC drilling identified 4 priority mineralised zones, with the easternmost zone open-ended and coinciding with a magnetic low.
- Whistler is the highest-priority AC target – follow-up soil anomaly and the high-grade **1m @ 25.21 g/t Au** RC intercept.
- Encouraging shallow, gold intercepts returned include:
 - **16m @ 138 ppb Au** from 36m incl. **4m @ 341ppb Au** from 36m (NWAC035)
 - **8m @ 273 ppb Au** from 36m incl. **4m @ 434ppb Au** from 40m (NWAC037)
 - **8m @ 811ppb Au** from 44m incl. **4m @ 1,520ppb Au** from 44m (NWAC038)
 - **12m @ 299ppb Au** from 0m incl. **4m @ 545ppb Au** from 8m (NWAC042)
- Follow-up AC program underway - 3,000m for ~104 holes delineating the shallow footprint of the Whistler and Altona discoveries.



1 ASX Announcement 27 January 2026 "New Blind Gold Mineralised Zones Discovered at Leonora South"

Two partnerships fund 100% of development capex Cash flow without dilution

BML Ventures Pty Ltd

Leonora North – Mt Stirling Project

- BML funds 100% of Mt Stirling mining capex and opex.
- Net profit split 50/50 + \$2.5M non-dilutive cash facility (drawable as drilling de-risks metallurgy, geotechnics, and mine plan).
- BML is a proven, experienced mining operator – reduces execution risk for GA8 shareholders.
- Near-term path to production: partner-operated, capex-light mining on GA8's flagship deposit.

Mineral Mining Services (MMS)

Leonora South – Orion & Sapphire

- LOI signed Oct 2025: Drill-For-Equity → full Mine Development JV.
- MMS funds 100% of development capex to bring Orion-Sapphire into operation.
- 6,000m RC program (March 2026) being managed in collaboration with MMS.
- Partnership validates the commercial quality of Leonora South deposits to an experienced operator



Indicative Path to Production

Accelerated partnership strategy to achieve near-term production and deliver cash flows from existing resource inventories as early as **~Q4 2026**

	2026 Q1	2026 Q2	2026 Q3	2026 Q4	2027 Q1	2027 Q2	2027 Q3	2027 Q4	2028 Q1
MMS Leonora South Orion + Sapphire	6,000m RC Drill Program	Resource definition drilling	Finalise Feasibility Studies	Approvals	Commence Mining (Targeted Jan 2027)	Current resource inventory estimate ~12-months			
BMLV Leonora North Mt Stirling Project	30,000m Grade Control Drilling	MDCP approval & key infrastructure	Commence Mining (Targeted Aug 2026)	Current resource inventory estimate ~18-months					

Catalyst Pipeline

Multiple re-rating catalysts across both hubs in the next 6–12 months

Q1 / Q2
CY2026

- › **Leonora South RC Results (6,000m – 5 prospects - managed with MMS)**
Five prospect areas. Progressive results – Eclipse depth extensions, Challenge, Orion and Sapphire step-outs.
- › **Leonora South AC Results (3,000m – Whistler/Altona)**
Whistler system follow-up– 89 ppb Au anomaly + 25 g/t Au intercept - to confirm the system width and continuity.

Q2 / Q3
CY2026


- › **Leonora North Drilling – 30,000m RC**
First drill test of the Hydra and Tyrannus look-alike systems, plus the S4 anomaly.
- › **BML \$2.5M Drawdown Milestones**
Non-dilutive cash flowing as metallurgy, geotechnics, and mine plan milestones are achieved.


Q3 / Q4
CY2026


- › **Commence Mining at Mt Stirling**
- › **MMS – Approval of Mine Development and Closure Plan (MDCP)**
Formalisation of the Orion–Sapphire Mine Development JV.
- › **Drilling Results from Extensive Regional Exploration**
Aggregate resource upgrade incorporating new drilling results.

ASX:GA8

General Enquiries

 +61 8 9420 8205

 104 Colin Street, West Perth
Western Australia 6005

 info@goldarcres.com.au

GoldArc



JORC Mineral Resource Table

GoldArc's Gold Projects	Category	Tonnes	Gold Grade (g/t Au)	Gold Ounces
Leonora North - Viserion	Indicated	391,000	2.1	26,000
	Inferred	2,158,000	1.6	111,000
Leonora North - Stirling Well	Inferred	198,000	2.3	15,000
Leonora South - Niagara - Orion	Inferred	370,000	2.2	26,409
Leonora South - Niagara - Sapphire	Inferred	320,000	2.1	21,605
Total		3,437,000	1.82	200,064