

## FURTHER NORTH EAST MINERALISATION EXTENSION CONFIRMED AT KAMEELBURG

### Highlights

- Aldoro continues to build on the significant scale of the Kameelburg Niobium and REE deposit with the fourth hole (DD004E) from the Phase II drilling program intersecting **387.2 meters of continuous mineralisation**.
- DD004E has encountered rich REE & Strontium mineralisation across the diamond core:
  - **DD004E: Average across entire 387.2 meters of mineralisation: 0.96% TREO, 3.22% SrCO<sub>3</sub>, 0.19% Nb<sub>2</sub>O<sub>5</sub> and 101ppm Mo**
- Significant shallow intercepts for DD004E include:
  - *From surface: 36m at 2.51% TREO, 7.04% SrCO<sub>3</sub>, 0.11% Nb<sub>2</sub>O<sub>5</sub> and 200ppm Mo*
  - *From 58 meters: 53m at 1.99% TREO, 5.67% SrCO<sub>3</sub>, 0.12% Nb<sub>2</sub>O<sub>5</sub> and 216ppm Mo*
  - *From 120 meters: 12m at 1.61% TREO, 5.18% SrCO<sub>3</sub>, 0.39% Nb<sub>2</sub>O<sub>5</sub> and 86ppm Mo*
  - *From 134 meters: 14m at 1.51% TREO, 4.73% SrCO<sub>3</sub>, 0.14% Nb<sub>2</sub>O<sub>5</sub> and 62ppm Mo*
- Phase II drilling program has now been completed.
  - 15 diamond holes drilled across 7,190 meters
  - Smart 8 drill rig to commence bulk sample drilling in the coming weeks

Aldoro Resources Ltd (“**Aldoro**”, “**The Company**”) (**ASX: ARN**) is pleased to advise that the assay results for diamond drill hole DD004E (“**Assayed Diamond Hole**”) have been received and confirm further rich REE and Strontium mineralisation encountered at Kameelburg.

DD004E has seen 387.2 meters of continuous mineralisation intersected at Kameelburg comprising Rare Earth (REE), Strontium, Niobium and Molybdenum (Mo) within the Kameelburg Carbonatite.

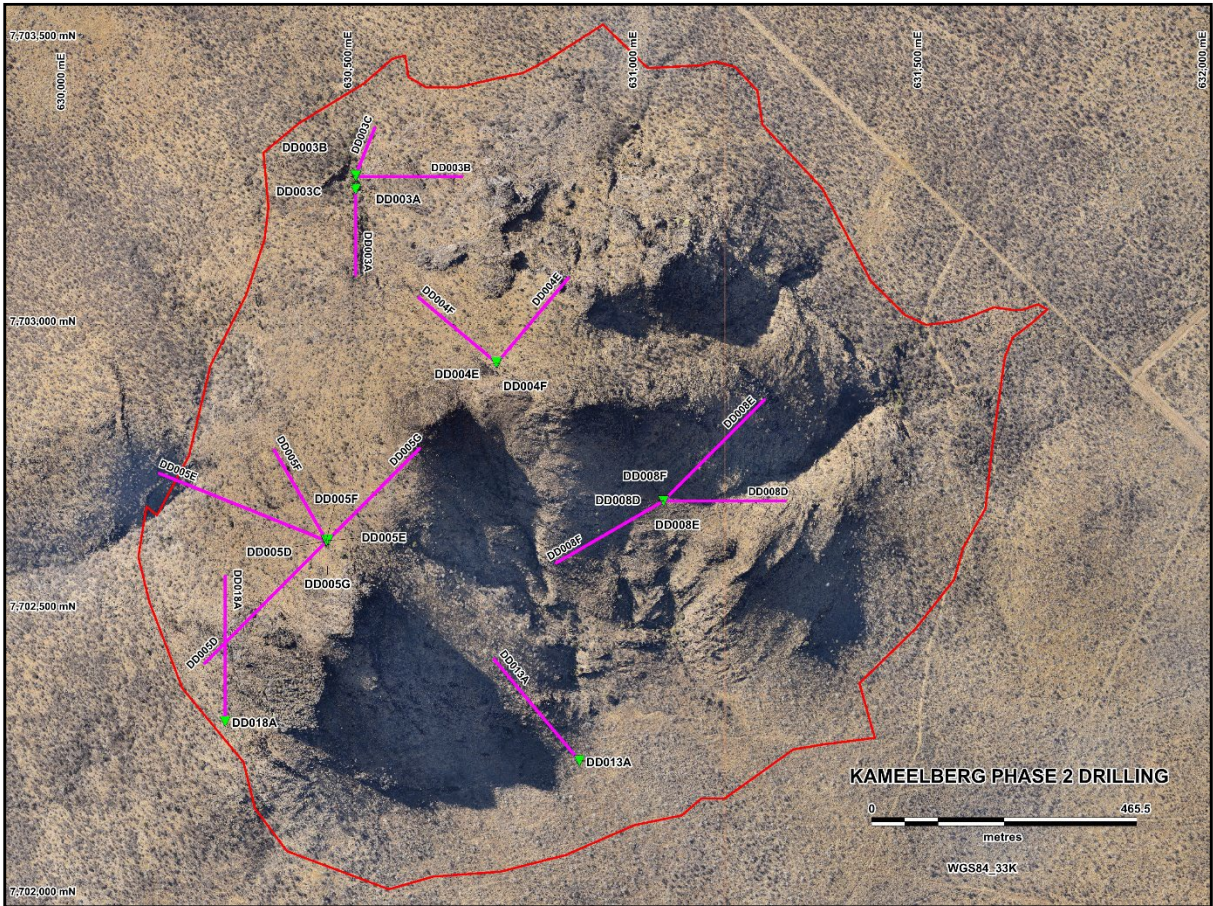


Figure 1: Diamond drill hole plan view of the Phase 2 drilling programme

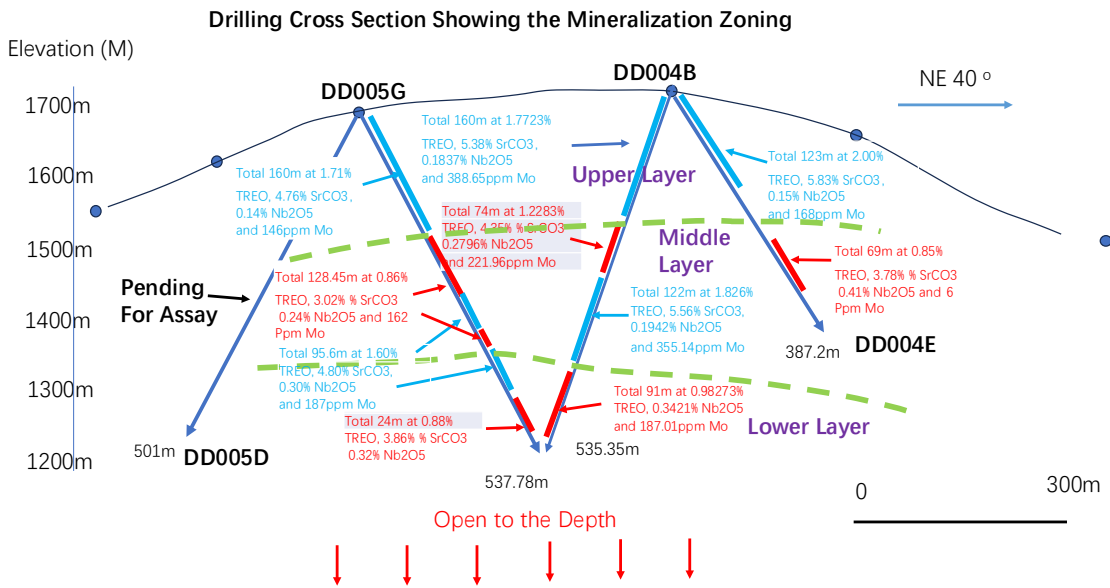
### **Diamond Hole Assay – DD004E**

Assays have confirmed that diamond drill hole DD004E (387.2 m) has encountered significant and continuous mineralisation throughout the entire drill core and **ended in mineralisation, which remains open at depth.**

Assay grades across the three diamond holes have utilised a 1% TREO cut-off grade and are illustrated as follows. *Please refer Appendix 1 for full assay details.*

The mineralisation appears to be controlled by semi massive to massive magnetite zones, crustal contaminations where mafic fragment/xenoliths are significant and incorporated in the Beforsite carbonatite. Major rare earth mineral is Ancylyte.

For personal use only



**Figure 2:** Drilling Cross Section illustrating mineralization zoning across the NE Line with latest hole being DD004E

To date assays have confirmed Kameelburg footprint extends 1.5km long by 650m wide and 600m deep noting mineralisation remains open at depth and assays for south-east step out holes remain pending.

The contribution of additional assays across the carbonatite is building the confidence and knowledge in the understanding of mineralisation system.

### **Drilling Update**

The Phase II drilling program has now been completed with 15 holes drilled across 7,190 meters of diamond drilling. Additional assays have arrived in country and are expected to be processed continually throughout April & May.

The Company is now preparing to utilize its Smart 8 drilling rig to commence bulk sampling retrieval from across the Kameelburg carbonatite.

A summary of drilling to date is as follows:

For personal use only

No.	Borehole ID	UTM Zone	Easting	Northing	Elevation (m)	Azimuth	Dip (degrees)	Drilled Depth (m)	Assay Status	Location	Planned depth (m)
1	DD003A	33K	630505	7703237	1,454	180	-60	300.2	Awaiting	DD003 Pad	600
2	DD003B	33K	630506	7703259	1,530	90	-65	438.9	Awaiting	DD003 Pad	500
3	DD003C	33K	630505	7703261	1,528	22	-65	214.7	Awaiting	DD003 Pad	500
4	DD004E	33K	630754	7702933	1,742	40	-60	387.2	Awaiting	DD004 Pad	750
5	DD004F	33K	630752	7702933	1,740	310	-60	354.2	Awaiting	DD004 Pad	750
6	DD005D	33K	630454	7702620	1,703	225	-60	604.4	Awaiting	DD005 Pad	650
7	DD005E	33K	630453	7702621	1,705	292	-60	629.9	Received	DD005 Pad	750
8	DD005F	33K	630454	7702621	1,702	330	-65	434.9	Received	DD005 Pad	700
9	DD005G	33K	630457	7702622	1,705	45	-65	537.7	Received	DD005 Pad	700
10	DD008D	33K	631046	7702691	1,643	90	-65	503.9	Awaiting	DD008 Pad	600
11	DD008E	33K	631046	7702691	1,643	45	-60	500.9	Awaiting	DD008 Pad	600
12	DD008F	33K	631046	7702691	1,643	240	-60	556	Awaiting	DD008 Pad	600
13	DD008G	33K	631046	7702691	1,643	330	-60	573.5	Awaiting	DD008 Pad	650
14	DD013A	33K	630898	7702235	1,536	320	-65	550.5	Awaiting	DD013 Pad	600
15	DD018A	33K	630276	7702304	1,614	360	-65	603.1	Awaiting	DP002 Pad	560
Total								7190.0			

**Table 1:** Completed Phase 2 drilling summary.

*Authorised for and on behalf of the Board,*

**Sarah Smith**  
Company Secretary

### About Aldoro Resources

Aldoro Resources Ltd is an ASX-listed (**ASX: ARN**) mineral exploration and development company. Aldoro has a portfolio of critical minerals including rare earth, lithium, rubidium and base metal projects. The Company's suite of projects include the Kameelburg REE & Niobium Project in Namibia, the Niobe lithium-rubidium-tantalum project and the Narndee Igneous Complex project in Western Australia.

### Disclaimer

Some of the statements appearing in this announcement may be in the nature of forward-looking statements. You should be aware that such statements are only predictions and are subject to inherent risks and uncertainties. Those risks and uncertainties include factors and risks specific to the industries in which Aldoro operates and proposes to operate as well as general economic conditions, prevailing exchange rates and interest rates and conditions in the financial markets, among other things. Actual events or results may differ materially from the events or results expressed or implied in any forward-looking statement. No forward-looking statement is a guarantee or representation as to future performance or any other future matters, which will be influenced by a number of factors and subject to various uncertainties and contingencies, many of which will be outside Aldoro's control.

Aldoro does not undertake any obligation to update publicly or release any revisions to these forward-looking statements to reflect events or circumstances after today's date or to reflect the occurrence of unanticipated events. No representation or warranty, express or implied, is made as to the fairness, accuracy, completeness or correctness of the information, opinions or conclusions contained in this announcement. To the maximum extent permitted by law, none of Aldoro, its Directors, employees, advisors or agents, nor any other person, accepts any liability for any loss arising from the use of the information contained in this announcement. You are cautioned not to place undue reliance on any forward-looking statement. The forward-

For personal use only

looking statements in this announcement reflect views held only as of the date of this announcement.

This announcement is not an offer, invitation or recommendation to subscribe for or purchase securities by Aldoro. Nor does this announcement constitute investment or financial product advice (nor tax, accounting or legal advice) and is not intended to be used for the basis of making an investment decision. Investors should obtain their own advice before making any investment decision.

#### **Competent Person Statement**

The information in this announcement that relates to Exploration Results and other technical information is based on information compiled by Dr Minlu Fu (a non-executive director of the Company) and complies with the 2012 Edition of the Australasian Code for Reporting of Exploration Results, Mineral Resources and Ore Reserves (JORC Code). It has been reviewed by Mr Jeremy Clark and Mr Mark Mitchell.

Mr. Mark Mitchell is a Member of the Australasian Institute of Geoscientists (AIG). Mr Mitchell is an independent consultant and not an employee of Aldoro and has sufficient experience that is relevant to the style of mineralisation and type of deposit under consideration and to the activity being undertaken to qualify as a Competent Person as defined in the 2012 Edition of the JORC Code. Mr Mitchell consents to the inclusion in this announcement of the matters based on his information in the form and context in which it appears.

Appendix 1: Down hole assays – Lanthanides, Yttrium, Niobium, Molybdenum and Strontium

Drill Collar DD004E (Dominant Mineralisation highlighted **REE** Nb)

Hole ID	Sample No	Depth_From (m)	Depth_To (m)	Ce ppm	Dy ppm	Er ppm	Eu ppm	Gd ppm	Ho ppm	La ppm	Lu ppm	Nd ppm	Pr ppm	Sm ppm	Tb ppm	Tm ppm	Y ppm	Yb ppm	Nb ppm	Mo ppm	Sr ppm	TREO%	Nb2O5%	NdPr%	SrCO3 %
DD004E	DD004E-001	0	1	11090	42.1	12.9	61.3	141.8	6.1	8639	0.9	2304.5	880.6	247.7	12.2	1.3	143	6.4	860	57	49166	2.76	0.12	13.46%	8.28
DD004E	DD004E-002	1	2	9029	32.8	9.7	44.8	102.8	4.5	6751.5	0.6	1870.6	698.9	181.7	9.2	1	109.6	4.7	361	22	34693	2.21	0.05	13.58%	5.85
DD004E	DD004E-003	2	3	11547	38.2	9.5	58.8	136.6	5	8811.7	0.6	2320.8	935.4	235.4	11.5	0.9	108	4.4	818	81	48847	2.84	0.12	13.40%	8.23
DD004E	DD004E-004	3	4	8494.2	30	8.6	49	108.8	3.9	5949.3	0.6	1914.4	694	200.9	9	0.8	93.4	4.2	406	80	45356	2.06	0.06	14.80%	7.64
DD004E	DD004E-005	4	5	8543.6	24.5	7.3	46.2	100.7	3.3	6195.8	0.4	1861.9	684.3	190.3	7.9	0.7	81.2	3.2	33	35	48272	2.08	0.00	14.30%	8.13
DD004E	DD004E-006	5	6	12264	39.7	9.8	65	152.9	4.7	9699.1	0.6	2465.2	997.4	255.3	12.5	0.8	101	4.2	734	62	57052	3.05	0.11	13.24%	9.61
DD004E	DD004E-007	6	7	8656.5	19.9	4.9	36.6	83.2	2.5	6782.5	0.3	1640.4	645.4	150.5	6.5	0	55.9	2.2	65	48	39216	2.12	0.01	12.60%	6.61
DD004E	DD004E-008	7	8	9301.7	27.4	7.2	43.4	98.9	3.4	7285.9	0.4	1808.9	702.4	176.4	8.1	0.6	78.2	3.2	78	85	29528	2.29	0.01	12.81%	2.12
DD004E	DD004E-009	8	9	15474	36.2	7.9	62.9	149	4	12713	0.4	2855.2	1216.3	256	11.9	0.6	87.6	3.3	66	97	58105	3.85	0.01	12.34%	9.28
DD004E	DD004E-010	9	10	11336	36.8	8.4	57.5	138.6	4.5	8794.7	0.5	2299.1	873.4	232.1	12.1	0.7	96.9	3.7	461	156	46304	2.80	0.07	13.23%	7.80
DD004E	DD004E-011	10	11	8171.3	24.7	7.6	36.3	81.5	3.5	5999.7	0.5	1710.3	644.3	158.6	7	0.7	86.6	3.7	566	81	47059	1.98	0.08	13.86%	7.93
DD004E	DD004E-013	11	12	7567.2	25.2	7.4	39.2	85.3	3.5	5246.2	0.5	1702	618.9	171.1	6.8	0.7	89.1	3.5	64	74	53859	1.82	0.01	14.86%	9.07
DD004E	DD004E-014	12	13.3	11180	33.8	9.4	56.8	124.7	4.5	8019.8	0.6	2321.5	873.1	236	10.1	0.8	107.6	4.2	185	190	43079	2.69	0.03	13.85%	7.26
DD004E	DD004E-015	13.3	14	12221	42.2	11.3	60	137.4	5.6	8867	0.7	2491	1029	261.6	12.2	1.1	130.7	5.2	1081	368	39769	2.96	0.15	13.89%	6.70
DD004E	DD004E-016	14	15	8516.9	40	12.4	49.5	113.8	5.8	5993.2	0.8	1884.5	691.8	199	10.5	1.2	138.4	5.7	1004	292	34597	2.07	0.14	14.54%	5.83
DD004E	DD004E-017	15	16	11154	54.2	16.6	56.2	133.6	7.4	8122.8	1	2229.1	860.5	225.3	13.7	1.7	187.8	7.8	802	439	46559	2.70	0.11	13.34%	7.84
DD004E	DD004E-018	16	17	9110.5	45.6	13.2	50.5	117.8	6.2	6728.4	0.8	1904	719.2	202.7	11.6	1.2	147.2	6.1	2455	1209	37268	2.23	0.35	13.71%	6.28
DD004E	DD004E-019	17	18	6601.2	51.3	18	50.6	116.9	7.8	4829.6	1.4	1321	557.5	202.2	11.9	1.9	202.1	10.2	1975	662	35480	1.68	0.28	15.26%	5.98
DD004E	DD004E-020	18	19	6082.3	33	10.4	37.8	86.5	4.7	4131.4	0.8	1435.4	513.4	157.1	8.2	1	115	5.7	997	435	32273	1.48	0.14	15.39%	5.45
DD004E	DD004E-022	19	20	8341.9	45.3	16.8	44.3	107.1	7.3	6303.6	1.2	1796.4	666.1	185.1	10.9	1.8	185	9.3	1087	327	43228	2.08	0.16	13.84%	7.28
DD004E	DD004E-023	20	21	14227	42.8	14.1	61.2	140.8	5.9	5195.5	1	2693.6	1129.1	264.7	11.8	1.4	152	7.6	814	141	52550	3.60	0.12	12.41%	8.85
DD004E	DD004E-024	21	22	11709	33.7	9.7	55.1	120.2	4.5	8907.4	0.7	2493.6	993.3	243.6	9.9	0.9	112.8	5	498	424	51316	2.89	0.07	14.07%	8.65
DD004E	DD004E-025	22	23	12304	51.6	17.6	55.8	132.9	7.7	10183	1	2397.1	980.5	238.4	12.5	1.7	189.3	7.8	743	68	43196	3.11	0.11	12.66%	7.28
DD004E	DD004E-027	23	24	8449	30.2	10.9	45.3	98.5	4.7	6539.6	0.8	1780	653.1	197.8	8.1	1.1	122	5.9	505	166	30170	2.10	0.07	13.51%	5.08
DD004E	DD004E-028	24	25	12038	39.3	11.9	48.4	115.8	5.4	9943.2	0.8	2207.1	940.3	206.5	10.4	1.1	136.3	6.1	882	50	29521	3.01	0.13	12.20%	4.97
DD004E	DD004E-029	25	26	12698	50.7	15.7	56.4	133.8	7.4	10442	1.1	2440.7	1023.6	234.5	12.9	1.6	175.1	8.2	757	83	55083	3.20	0.11	12.65%	9.28
DD004E	DD004E-031	26	27	11750	45.9	14.6	53.9	128.8	6.7	9039.6	1	2365.1	938.9	230	11.9	1.4	166.1	7.9	357	36	51518	2.93	0.05	13.15%	8.68
DD004E	DD004E-032	27	28	13080	38.1	11.7	53.2	127.6	5.3	11107	0.7	2426.1	1011.4	224.6	10.7	1.1	127.6	5.3	789	163	49741	3.31	0.11	12.14%	8.38
DD004E	DD004E-033	28	29	12473	45.4	14.2	59.2	137.4	6.6	10363	0.9	2406.9	985.2	244.2	11.6	1.4	165.7	7	684	115	38397	3.15	0.10	12.56%	6.47
DD004E	DD004E-034	29	30	8935.4	49.4	17.9	45.2	109.4	7.8	7038.3	1.3	1806.6	679.7	179.9	11.2	1.9	195.5	10	1133	260	36779	2.24	0.16	12.95%	6.20
DD004E	DD004E-035	30	31	9932.1	44.9	15.2	47.9	112.4	6.6	7190.1	1.1	2109.9	787.9	207.1	10.9	1.6	162.8	8	1889	396	36853	2.42	0.27	13.98%	6.21
DD004E	DD004E-036	31	32	8304.5	38.4	13.8	41	96.7	6	5819.3	1	1830.4	679.2	178	9.3	1.5	152.3	7.8	1313	406	30500	2.01	0.19	14.56%	5.14
DD004E	DD004E-037	32	33	10295	50.7	17.5	49.4	119.5	7.5	8010.9	1.2	2066.8	794.4	201.3	12.2	1.8	194.9	9.3	1484	177	34023	2.56	0.21	13.06%	5.73
DD004E	DD004E-038	33	34	12235	53.7	17.4	61.8	144.7	7.8	9763.1	1.2	2513.3	1002.5	252.1	14	1.6	193.2	8.9	975	53	45580	3.08	0.14	13.34%	7.68
DD004E	DD004E-040	34	35	7805.9	74.6	24.2	63.4	153.5	11.3	5198.7	1.6	2057.4	684.4	245.7	17.3	2.4	280.3	12.2	1226	71	37609	1.95	0.18	16.42%	6.34
DD004E	DD004E-041	35	36	6523.2	56	17.1	55.9	133.3	7.8	4238.9	1.2	1716.8	572.2	215.1	13.8	1.7	187.7	9.2	750	199	31966	1.61	0.11	16.59%	5.32
DD004E	DD004E-042	36	37	1746.9	55.1	25.2	20.1	56.7	10.2	822.2	2.2	538.1	165.7	69.7	9.3	2.9	271	16.5	583	92	8706	0.46	0.08	18.04%	1.47
DD004E	DD004E-043	37	38	1219.9	44.2	21.4	15.8	45	8.6	623.1	1.9	392.2	116.8	56.6	7	2.6	228.8	14.4	493	79	14335	0.33	0.07	18.04%	2.42
DD004E	DD004E-044	38	39	630.5	17.6	9	9.2	24.1	3.4	363.7	1	209.2	64.7	33.9	3.2	1.2	92	7.4	169	48	9226	0.17	0.02	18.63%	1.55
DD004E	DD004E-045	39	40	297.6	18.5	10	5.9	18.2	3.5	159	1.1	107.4	31.1	18.9	2.9	1.4	104.7	8.4	272	6	9899	0.09	0.04	17.35%	1.67
DD004E	DD004E-046	40	41	205.9	13.1	8.5	3.6	12.5	2.8	114.5	1.1	73	21.5	13.3	2.1	1.1	83.7	8.4	260	30	6933	0.07	0.04	16.50%	1.17
DD004E	DD004E-047	41	42	1694.9	34.7	13.3	24.5	59.9	5.7	814.8	1.1	607.3	171.2	91.3	7.1	1.5	146	8.5	703	32	10325	0.43	0.10	21.03%	1.74
DD004E	DD004E-048	42	43	1904.7	31.4	12.9	22.6	57.2	5.2	1124.6	1.2	589.6	178.3	86.8	6.5	1.6	138.4	8.7	473	99	17591	0.49	0.07	18.32%	2.96
DD004E	DD004E-049	43	44	1339.1	63.6	36.6	20.8	58.4	13.8	683	3.5	449.9	130.3	69.7	9.4	4.8	353.5	25.9	693	86	6342	0.38	0.10	17.60%	1.07
DD004E	DD004E-050	44	45	661.7	20.1	11.3	10.1	26.9	4	341.2	1.1	243.5	70.9	38.1	3.8	1.3	112.7	8.4	526	31	3427	0.18	0.08	20.06%	0.58
DD004E	DD004E-051	45	46	393.2	23.7	12.2	7.4	21.7	4.6	193.9	1.2	151.9	43.8	25	3.9	1.4	127.7	9	224	4	3203	0.12	0.03	18.96%	0.54
DD004E	DD004E-053	46	47	556.2	43.7	24.1	12.3	39	8.6	261.6	2.5	230.2	62.3	39.3	6.7	3	228.4	19.1	798	11	5030	0.18	0.11	18.78%	0.85
DD004E	DD004E-054	47	48	936.4	34.5	17.8	15	40.1	6.9	442	1.5	343.1	96.4	52.8	5.7	2.1	180.9	11.3	600	49	9932	0.26	0.09	19.93%	1.67
DD004E	DD004E-055	48	49	707.9	15.8	6.7	10.3	25.8	2.8	376.9	0.9	247.3	74.4	36.7	3.1	0.7	72	4.2	635	95	3942	0.19	0.09	20.18%	0.66
DD004E	DD004E-056	49	50	159	13.7	7.8	4.4	13.3	2.8	83.8	0.9	63.2	17.2	17.2	2.3										

For personal use only

Host ID	Sample No	Depth From (m)	Depth To (m)	Ce ppm	Dy ppm	Er ppm	Eu ppm	Gd ppm	Ho ppm	La ppm	Lu ppm	Nd ppm	Pr ppm	Sm ppm	Tb ppm	Tm ppm	Y ppm	Yb ppm	Nb ppm	Mo ppm	Sr ppm	TREO%	Nb2O5%	NdPr%	SrCO3%
DD004E	DD004E-099	88	89	3985.9	51.2	20.4	38.9	92.7	8.4	2508.4	1.9	1130.2	362.8	145	10.4	2.3	235.6	14.5	1212	241	2680.2	1.01	0.17	17.27%	4.52
DD004E	DD004E-100	89	90	2757.2	112.5	52.9	53.2	145.8	21.6	1610.3	4.8	946.6	270.1	165.9	20.7	6.7	589.2	35.7	1540	267	2356.7	0.80	0.22	17.75%	3.97
DD004E	DD004E-102	90	91	4396	76.1	36.6	51.2	126.3	13.8	2491.2	3.2	1342.8	419.1	186.2	14.7	4.2	391.8	24.3	1877	540	2320.5	1.12	0.27	18.37%	3.91
DD004E	DD004E-103	91	92	4216.1	72.7	32.9	47	114.6	13.2	2322.6	3	1326.8	409.5	175.2	14.1	3.9	378.1	22.3	1449	189	2458.9	1.07	0.21	18.87%	4.14
DD004E	DD004E-104	92	93	5279.1	137.5	65.1	70.4	180.6	25.4	2833	6	1746.5	530.1	245.8	24.2	8	722	44.7	487	15	3621.0	1.40	0.07	18.97%	6.10
DD004E	DD004E-105	93	94	4929.1	142	65.3	65.5	172.5	26.2	2658.6	5.8	1609.1	491.2	226.9	25	7.8	733.2	43.4	779	137	2499.3	1.32	0.11	18.61%	4.21
DD004E	DD004E-107	94	95	6509	30	10.3	48.1	104.8	4.5	4324.2	0.8	1672.2	565	197.4	8.4	1.2	124.6	6	1313	684	2390.1	1.59	0.19	16.39%	4.01
DD004E	DD004E-108	95	96	7224.8	25.2	9.5	42.6	87.9	4	4810.8	0.8	1797	620.2	192.9	7.3	1	105	6.2	1952	232	3259.1	1.75	0.28	16.13%	5.49
DD004E	DD004E-109	96	97	11809	31.6	10.4	56.7	123.3	4.6	8997.4	0.8	2331.4	896.9	236.2	9.7	1.1	115.6	6.3	1159	342	4496.8	2.87	0.17	13.12%	7.58
DD004E	DD004E-111	97	98	6083.3	114.3	39.3	72.7	195.6	17.7	3603.9	3.1	1800.3	566.2	254.3	24.8	4.5	428.7	23.1	1165	35	3569.9	1.55	0.17	17.80%	6.04
DD004E	DD004E-112	98	99	5098	223.5	85.3	96.8	289.4	37.8	3038.4	7.5	1515.1	477.6	266.9	44	10.1	962.7	56	1035	24	2665.3	1.44	0.15	16.19%	4.49
DD004E	DD004E-113	99	100	5650.5	36.8	12.3	61	129.1	5.2	2993.7	0.9	1843.8	561	245.2	10.9	1.2	126.4	6.8	1923	76	3352.8	1.37	0.28	20.51%	5.65
DD004E	DD004E-114	100	101	5375.2	220.8	79.2	108.8	315.1	4.4	3105.9	6.3	1715.5	516.3	312.7	45.2	9	929.8	47.2	1734	20	2971.8	1.51	0.25	17.27%	5.01
DD004E	DD004E-115	101	102	5011.6	29.8	10.2	43	88.8	4.4	2755.2	0.9	1578.2	488.4	185.8	8	1.1	107.6	6.6	1627	58	2753.6	1.21	0.23	19.96%	4.64
DD004E	DD004E-116	102	103	9118.4	31.1	10.8	44	93.4	4.7	6994.4	0.8	1912.9	701.2	190.6	8.1	1.1	114.3	5.9	124	38	4503.2	2.25	0.02	13.55%	7.59
DD004E	DD004E-117	103	104	10128	24.4	7	42.1	94.4	3.2	7890.8	0.5	2011.1	764	185.7	7.5	0.7	79.6	4	172	17	2982.4	2.49	0.02	13.02%	5.03
DD004E	DD004E-118	104	105	9728.1	28	8.9	44.6	96.7	4	7453.7	0.7	1991.4	743.9	192.5	7.7	1	104	5.4	176	39	2833.5	2.39	0.03	13.36%	4.77
DD004E	DD004E-120	105	106	4646.5	160.4	63.2	67.8	190.7	27.6	2899.7	4.8	1325.9	417.5	207.7	29.6	7	730	36.2	2251	23	2074.7	1.27	0.32	16.00%	3.50
DD004E	DD004E-121	106	107	7495.4	54.5	19.5	46.1	112.7	8.5	5423.6	1.5	1703.3	603.3	180.6	12.4	2	212.4	10.9	768	32	2954.8	1.86	0.11	14.46%	4.98
DD004E	DD004E-122	107	108	8598.2	34.7	10.5	47.7	104	5	6512.2	0.8	1832	670.4	196.8	9.2	1.1	118.1	6	709	39	3996.6	2.13	0.10	13.74%	6.73
DD004E	DD004E-123	108	109	9932.5	34.5	10.5	46.6	104.9	4.8	7729.1	0.8	2061.1	756.4	199.6	9.3	1	111.8	5.6	686	50	2896.2	2.46	0.10	13.18%	4.88
DD004E	DD004E-124	109	110	7323.9	33.8	9.9	43.3	95.9	4.5	5446.6	0.7	1592.6	577.9	174.2	8.8	1	110.3	5.3	1711	531	3279.4	1.81	0.24	14.02%	5.53
DD004E	DD004E-125	110	111	1978.6	33.6	13.9	21.3	52.8	5.7	1231.5	1.3	516.1	171.2	72.1	6.8	1.7	157.9	9.8	852	2408	1255.2	0.50	0.12	15.99%	2.11
DD004E	DD004E-126	111	112	554.9	20.8	12.9	6.4	17.8	4.4	366.7	1.5	146.7	50.6	18.5	3.1	1.8	132	11.5	298	2626	855.0	0.16	0.04	14.47%	1.44
DD004E	DD004E-127	112	113	1784.6	20.2	7.2	13.9	37.5	3.2	1279.1	0.7	401.3	141.8	51.5	4.3	0.8	84.8	5.1	435	87	1163.7	0.45	0.06	14.10%	1.96
DD004E	DD004E-128	113	114	2556.1	42.7	14.6	26.6	69.9	6.8	1705.2	1.3	720.5	225.6	96.1	8.8	1.7	179.7	9.6	3429	33	1043.1	0.66	0.49	16.62%	1.76
DD004E	DD004E-129	114	115	2166.7	43.7	17.9	20.9	57.8	7.4	1559.6	1.7	519.4	177.3	70.2	8.3	2.1	204.3	12.5	1018	50	912.8	0.57	0.15	14.22%	1.54
DD004E	DD004E-130	115	116	3892.2	44.2	15.9	30.2	79.1	7.1	2915.8	1.3	880.3	312.4	106.3	9.5	1.6	187.1	9.5	520	71	1589.4	1.00	0.07	13.98%	2.68
DD004E	DD004E-131	116	117	1835.9	68.5	25	25.2	79.8	11.3	1259.6	2.2	464.8	153.3	70.8	12.7	2.8	302.8	16.3	206	11	989.3	0.51	0.03	14.16%	1.67
DD004E	DD004E-133	117	118	1782.2	58.9	21.6	26	75.3	9.8	1078.3	2	512.7	159.7	83.5	10.7	2.3	262.6	14.8	845	49	1023.9	0.48	0.12	16.28%	1.73
DD004E	DD004E-134	118	119	1356.5	36.9	13.9	19.7	52.4	6.1	709.6	1.3	430.2	127.8	68.1	6.9	1.7	167.8	10.1	1197	50	680.5	0.35	0.17	18.42%	1.15
DD004E	DD004E-135	119	120	8290.3	102.9	39.6	49	129.1	17.2	1753.4	4.2	1156.4	338.9	165.9	18.7	5.1	455.8	31.3	1161	155	2992.0	0.89	0.17	19.65%	3.71
DD004E	DD004E-136	120	121	4841.2	44.6	14.4	48.5	104.6	6.5	2477.2	1.3	634.6	495.2	193.8	10.8	1.6	154.6	9.7	2638	6	30463.1	1.18	0.38	21.12%	5.13
DD004E	DD004E-137	121	122	5865	36	11.9	46.4	98.5	5.2	3915.9	1	1621.6	524.2	186.1	9.5	1.4	129.3	7.5	1718	20	2438.6	1.46	0.25	17.16%	4.11
DD004E	DD004E-138	122	123	6383.6	79.9	32.4	62	140.3	13.9	3704.2	2.7	2016	617.9	249	16	3.6	358.9	20.3	1636	34	3236.8	1.61	0.23	19.14%	5.45
DD004E	DD004E-139	123	124	6910.2	28.2	9	49.1	95.9	3.9	4081.8	0.8	2035.2	645.3	223.8	8	1	91.5	6.1	1260	17	3301.7	1.66	0.18	18.83%	5.56
DD004E	DD004E-140	124	125	9213.3	28.6	8.2	54.3	114	3.7	6201.9	0.7	2177.9	763.8	230.9	9.3	0.8	89.1	5.3	948	72	3582.7	2.21	0.14	15.51%	6.04
DD004E	DD004E-141	125	126	5465.7	46.6	13.2	58.4	122.4	6.3	2805.8	1.1	145.4	561.2	238.4	12	1.5	157	8.3	2851	12	3129.3	1.34	0.41	21.83%	5.27
DD004E	DD004E-142	126	127	9446.7	80.3	31.3	66.1	156	13.3	6016.8	2.9	2453.8	827.8	263.3	17.4	3.6	349.1	21.5	3991	253	3705.0	2.31	0.53	16.55%	6.24
DD004E	DD004E-143	127	128	6254.7	34.5	10.3	42.9	96.4	4.7	4035.9	0.9	1557.8	531.6	176.7	9.4	1.2	117.7	6.8	3850	147	2123.6	1.51	0.55	16.16%	3.58
DD004E	DD004E-144	128	129	4222	89.6	28.9	57.7	145	13.7	2433.8	2.1	1362.6	412.2	196.4	19.1	3	342.1	15.5	4655	97	2358.8	1.10	0.67	18.89%	3.97
DD004E	DD004E-145	129	130	7245.2	124.8	39.8	78.9	200.8	19.1	4462.2	2.7	2038.6	658.3	295.1	25.8	3.8	479.6	29.9	3818	139	3264.5	1.84	0.55	17.13%	5.50
DD004E	DD004E-147	130	131	8245.1	114.8	41.9	85.7	200.5	19	4896.7	3.1	2470	773	320.7	24.3	4.5	466.5	23	2305	104	3901.9	2.07	0.33	18.25%	6.57
DD004E	DD004E-148	131	132	5397.8	114	38.5	67.6	170.6	17.8	2969.3	2.5	1729.6	528.1	233.8	22.9	4	448.1	18.7	2896	92	2773.9	1.38	0.41	19.09%	4.67
DD004E	DD004E-149	132	133	2181.2	80.1	29.7	37.1	98.5	13.7	1264.7	2.3	705.2	206.6	115.7	14.9	3.3	341.6	17.5	2903	82	1351.0	0.60	0.42	17.71%	2.28
DD004E	DD004E-151	133	134	2529.6	12.2	5.2	20.6	40.7	1.9	1598.3	0.7	702.9	225.7	89.1	3.2	0.7	52.1	5.1	1892	93	1537.3	0.62	0.27	17.50%	2.59
DD004E	DD004E-152	134	135	8190.3	44.4	17.8	53	111	7.2	4959.3	1.8	2116.2	224.2	102.7	2.1	186.3	13.4	3013	267	3164.4	1.95	0.43	16.97%	5.33	
DD004E	DD004E-153	135	136	4363.4	25.3	8.2	29.3	66.8	3.6	2622.8	1.1	1181.8	394.9	123.1	6.3	1.1	91.1	8.5	3224	100	1922.5	1.05	0.46	17.60%	3.24
DD004E	DD004E-154	136	137	3041.7	41.1	15.8	31.5	74.9	6.5	1717.2	1.6	945.4	287.1	126.1	8.5	1.9	172.2	11.9	3497	135	1554.3</				

For Personal Use Only

Host ID	Sample No	Depth From (m)	Depth To (m)	Ce ppm	Dy ppm	Er ppm	Eu ppm	Gd ppm	Ho ppm	La ppm	Lu ppm	Nd ppm	Pr ppm	Sm ppm	Tb ppm	Tm ppm	Y ppm	Yb ppm	Nb ppm	Mo ppm	Sr ppm	TREO%	Nb2O5%	NdPr%	SrCO3%	
DD004E	DD004E-202	178	179	5849	66.6	18.9	72.7	164.8	9.1	3066.3	1.1	2095.8	602.3	275.4	17.6	1.6	214.4	7.7	182	3	29000	1.46	0.03	21.57%	4.89	
DD004E	DD004E-203	179	180	4497.7	72.5	18.6	64.3	157.2	10.2	2326.4	1.1	1589.2	456	229.4	18.2	1.8	235.3	8	802	2	20497	1.14	0.11	21.03%	3.45	
DD004E	DD004E-204	180	181	5332.7	64.3	17.6	70.6	159.8	9	2665.7	1.1	1932.4	559	268.3	17	1.8	213.3	8.3	369	2	29601	1.33	0.05	21.93%	4.97	
DD004E	DD004E-205	181	182	5169.7	63.7	18	70	156.2	9.1	2571.5	1	1928.3	542.3	271.2	16.6	1.6	212.2	7.4	141	1	28681	1.29	0.02	22.30%	4.83	
DD004E	DD004E-206	182	183	4335.6	68.3	19.8	64.8	146.9	10	2133.2	1.1	1691.2	464.4	237.5	16.8	1.8	232.8	8.4	1713	8	25010	1.11	0.25	22.76%	4.21	
DD004E	DD004E-207	183	184	4574.8	70.3	20.6	68	153.2	9.9	2250.4	1.1	1734.9	485.3	246.8	16.8	1.8	230.1	7.9	471	3	27766	1.16	0.07	22.40%	4.68	
DD004E	DD004E-208	184	185	22	4625.3	67.6	21.6	63.1	146.2	9.8	2337.5	1.3	1679.9	478	233.1	16.2	1.9	240.5	9.6	303	18	26340	1.16	0.04	21.63%	4.44
DD004E	DD004E-209	185	186	2542	32.4	10.8	23.1	55.9	5.1	1465.5	0.7	704.9	229.3	84.4	6.7	1	125	5.6	1787	108	10771	0.62	0.26	17.57%	1.81	
DD004E	DD004E-210	186	187	1086.5	16.7	6.8	11	26.6	3.1	564.8	0.4	309.2	98.4	39.7	3.2	0.6	74.1	3.2	1047	234	8132	0.26	0.15	18.07%	1.37	
DD004E	DD004E-211	187	188	1565.2	17.8	6.9	13.5	31.2	3.2	823.7	0.4	448.4	141.9	53.5	3.7	0.7	79.2	3.2	1447	73	10696	0.37	0.21	18.41%	1.80	
DD004E	DD004E-213	188	189	1735.2	27.5	10	18.1	42.1	4.5	874.6	0.7	521.6	161.9	68.2	5.4	1	109.5	5.2	2310	83	9216	0.42	0.33	18.97%	1.55	
DD004E	DD004E-214	189	190	1990.8	36.2	13	24.5	59	5.9	943.7	0.7	646.7	192.4	92.9	7.7	1.1	146.9	5.1	1223	265	12377	0.49	0.20	20.04%	2.09	
DD004E	DD004E-215	190	191	1691.3	32.2	9.5	18.5	47.3	4.7	869.9	0.5	487.8	155.3	60.3	6.5	0.8	115.5	3.6	1218	150	8978	0.41	0.17	18.26%	1.51	
DD004E	DD004E-216	191	192	4128.6	60.1	20.1	51.2	117.8	9.5	2191.1	1.3	1408.4	414.1	191.8	13.3	1.9	223.9	9.6	882	20	23317	1.04	0.13	20.52%	3.93	
DD004E	DD004E-217	192	193	1947.8	25.1	9.3	18.6	43.2	4.4	1017.7	0.7	572.2	179.4	70.5	5.2	0.9	104.4	5.2	990	101	11824	0.47	0.14	18.69%	1.99	
DD004E	DD004E-218	193	194	1916.1	18.2	8.4	15	33.5	3.1	1195	0.6	506.6	165.4	58.3	3.7	1	84.7	4.6	1393	50	10057	0.47	0.20	16.67%	1.69	
DD004E	DD004E-219	194	195	1469.4	11.6	4.7	11.4	23.7	2	826.3	0.5	427.7	139.8	50.4	2.5	0.6	52.6	3.8	717	64	7391	0.35	0.10	18.54%	1.25	
DD004E	DD004E-220	195	196	3797.8	16.2	7.1	21.6	41.5	2.7	2602.3	0.6	967.3	335.9	97.6	4	0.9	70.5	5.4	908	64	19375	0.93	0.13	16.29%	3.26	
DD004E	DD004E-221	196	197	3186.3	29.2	11.5	23.5	50.5	5	2123.6	0.9	854.7	287.6	95.6	5.8	1.5	129.3	7.9	1827	752	14745	0.80	0.26	16.70%	2.48	
DD004E	DD004E-222	197	198	1700.9	31.7	10.5	18.9	47.2	5.1	879.6	0.8	532.9	166.1	70.6	6.2	1.2	124.7	6.7	3781	406	8711	0.42	0.54	19.30%	1.47	
DD004E	DD004E-223	198	199	1723.3	43.7	17.5	25	62.2	7.5	813.6	1.4	611.7	178.9	90.7	8.3	2.1	200.7	11.4	1368	54	16970	0.45	0.20	20.69%	2.86	
DD004E	DD004E-224	199	200	353.6	22.5	10	6	20.9	4.3	195.7	1	135.6	38.3	20.8	3.5	1.4	114.6	8.4	274	28	7523	0.11	0.04	18.36%	1.27	
DD004E	DD004E-225	200	201	2685.2	66.8	27	38.3	94.6	12	1401.1	2	987.3	286.1	141.3	12.3	3.2	310.2	16.7	3395	16	13880	0.71	0.49	20.80%	2.34	
DD004E	DD004E-227	201	202	4718.1	132.9	55.7	73.1	177.1	24.7	2411.9	3.7	1824.1	517.7	268	22.9	6.4	635.5	31.1	2564	2	24659	1.28	0.37	21.34%	4.15	
DD004E	DD004E-228	202	203	4592.2	94.4	38.5	66.2	148.8	16.6	2382.6	3	1761.9	502.2	249.3	17.4	4.8	428.9	24.9	3440	3	30080	1.21	0.49	21.80%	5.07	
DD004E	DD004E-229	203	204	2516.2	75.9	32.5	46.6	107.6	13.7	1855.5	2.4	1271.7	375.3	179.6	13.6	3.9	351.2	20.3	6758	4	23921	0.92	0.97	20.82%	4.03	
DD004E	DD004E-231	204	205	2850.2	64.6	25.8	38	91.2	11.7	1461.8	1.8	1033	301.3	143	11.3	3	292.5	15.1	8399	21	19449	0.74	1.20	20.91%	3.28	
DD004E	DD004E-232	205	206	4519.1	125.2	49	71.4	176	21.9	2243.2	3.2	1776.5	504	269.4	22.3	5.6	568.5	27	742	2	31789	1.22	0.11	21.85%	5.36	
DD004E	DD004E-233	206	207	1879.4	64.7	24.4	41.4	98.5	10.9	1409.8	1.6	1099.8	314.7	155.5	12.2	2.7	269.5	13.3	964	16	23182	0.75	0.14	21.99%	3.91	
DD004E	DD004E-234	207	208	801.7	25.1	10.3	11.9	33	4.6	476.1	0.7	275.5	82.5	42.2	4.5	1.2	119	5.9	2115	38	3220	0.22	0.30	18.77%	0.54	
DD004E	DD004E-235	208	209	654.5	15.4	9.5	9.1	24	3.1	377.6	1	230.2	69.5	33.6	3	1.4	90.7	8.6	445	13	3416	0.18	0.06	19.44%	0.58	
DD004E	DD004E-236	209	210	623.2	21.4	14.7	9.3	25.9	4.7	350.3	0.4	231.2	67.8	34.6	3.3	2.1	136.8	11.4	392	25	3507	0.18	0.06	19.27%	0.59	
DD004E	DD004E-237	210	211	498.6	31.6	13.5	8.7	29.6	5.6	286.8	0.9	175.2	52.2	30.3	4.7	1.5	161.1	7.8	574	39	3482	0.15	0.08	17.18%	0.59	
DD004E	DD004E-238	211	212	760.7	12.7	5.1	7.1	19.5	2.2	469.4	0.4	231.6	75.3	31	2.4	0.7	58.5	3.4	419	36	7443	0.20	0.06	18.17%	1.25	
DD004E	DD004E-240	212	213	1686.5	19.1	6.6	12.3	32.4	3	1223	0.3	422.3	143.3	51.9	3.9	0.8	80.2	4.7	762	29	7459	0.43	0.11	15.26%	1.26	
DD004E	DD004E-241	213	214	451.5	10.1	4.3	5	15.9	1.8	284.8	0.3	146.7	45.8	20.6	2	0	45.5	2.7	185	26	2549	0.12	0.03	18.46%	0.43	
DD004E	DD004E-242	214	215	186.3	13.4	7.8	3.1	11.1	2.9	118.5	0.8	58.3	18.2	9.8	1.8	1	81	6.3	124	15	2089	0.06	0.02	14.50%	0.35	
DD004E	DD004E-243	215	216	86.2	8	4.1	1.9	7.9	1.6	50.6	0.5	32.6	9.1	7.1	1.3	0.6	44.9	3.9	75	7	1469	0.03	0.01	15.78%	0.25	
DD004E	DD004E-244	216	217	602.8	17.9	9.1	8.7	22.6	3.6	345.2	0.8	218.8	64	31.8	3.1	1.3	94.1	6.8	245	20	6876	0.17	0.04	19.62%	1.16	
DD004E	DD004E-245	217	218	2409.2	36.6	11.6	29.5	69.9	5.5	1476.8	0.8	799.4	239	115.6	8	1.3	137.8	6.3	809	36	14439	0.63	0.12	19.33%	2.43	
DD004E	DD004E-246	218	219	647.9	10.8	4	7	20.4	1.8	399.9	0.4	200	62.7	29.9	2.4	0	47.4	3	198	75	4584	0.17	0.03	18.18%	0.77	
DD004E	DD004E-247	219	220	527.3	26.7	11.3	9.7	31.9	4.8	344.7	1	169.4	52.5	31.1	4.6	1.4	120.9	8.2	346	49	3194	0.16	0.05	16.34%	0.54	
DD004E	DD004E-248	220	221	233.1	11.4	4.9	4.2	13.8	2.2	138.1	0.5	79.7	24.4	14.4	2.1	0.7	57.8	3.9	122	16	2438	0.07	0.02	17.44%	0.41	
DD004E	DD004E-249	221	222	299	9.8	3.9	5.1	14.5	1.7	179	0.5	107.2	31.9	19.3	2.1	0.6	43.3	3.8	395	18	2801	0.08	0.06	19.15%	0.47	
DD004E	DD004E-250	222	223	480.5	11	4.9	5.5	17.3	2.1	287.7	0.6	164.1	49.5	24.6	2.2	0.8	54.5	4.6	263	79	2572	0.13	0.04	19.13%	0.43	
DD004E	DD004E-251	223	224	450.5	7.3	2.7	4.7	13.7	1.2	299.6	0.2	145.1	46.6	22.9	1.6	0	31	2	167	21	2164	0.12	0.02	18.54%	0.36	
DD004E	DD004E-253	224	224.86	514.9	12	5.7	5.5	16.9	2.2	314.5	0.6	165.9	51.3	25.1	2	0.8	60.4	4.7	163	23	3793	0.14	0.02	18.25%	0.64	
DD004E	DD004E-254	224.86	226	616.0	7.9	3.1	6.2	16.2	1.2	408.9	0.3	185.7	60.9	26.6	1.7	0	33.7	2.3	196	88	2996	0.16	0.03	17.96%	0.50	
DD004E	DD004E-255	226	227	452.3	5.6	2.1	4.6	12.8	0.9	304	0.2	139.8	44.7	20.5	1.3	0	22.5	1.6	101	153	3011	0.12	0.01	18.14%	0.51	
DD004E	DD004E-256	227	228	1591.5	14.8	4.6	12.2	31.7	2.1	1073.5	0.4	415.4	140.9	53.5	3.4	0.5	51	3	159	161	5775	0.40	0.02	16.31%	0.97	
DD004E	DD004																									

For personal use only

Host ID	Sample No	Depth From (m)	Depth To (m)	Ce ppm	Dy ppm	Er ppm	Eu ppm	Gd ppm	Ho ppm	La ppm	Lu ppm	Nd ppm	Pr ppm	Sm ppm	Tb ppm	Tm ppm	Y ppm	Yb ppm	Nb ppm	Mo ppm	Sr ppm	TREO%	Nb2O5%	NdPr%	SrCO3 %
DD004E	DD004E-302	268	269	2890.9	51.4	19.6	40.7	91.4	8.7	1446.8	1.6	1104.3	317.4	158.1	10	2.6	219.8	13.6	1560	7	23003	0.75	0.22	22.19%	3.88
DD004E	DD004E-303	269	270	605.9	18.7	12.2	9.2	23.4	4.3	335.7	1.4	234.4	67.5	34.5	3	1.8	118.6	11.3	315	5	2974	0.17	0.05	20.20%	0.50
DD004E	DD004E-304	270	271.44	843	26.2	11.4	12.7	33.8	4.8	469.3	1	321	91.9	46.4	4.4	1.5	133.1	8.4	403	10	3648	0.24	0.06	20.40%	0.61
DD004E	DD004E-305	271.44	272	3401.7	72.9	38.1	50.9	115.7	14.2	1676.3	3.2	1389.7	385.6	202.6	13.5	5	381.7	26.9	475	2	22085	0.91	0.07	22.69%	3.72
DD004E	DD004E-307	272	273	3280.3	70.8	32.8	45.4	105.6	13.2	1667	2.6	1282.7	363.2	181.5	12.7	4.2	341.9	21.5	432	16	21664	0.87	0.06	22.04%	3.65
DD004E	DD004E-308	273	274	2700	66.9	27.3	46.4	105.8	11.7	1292.4	1.9	1150.4	308.7	172.7	12.8	3.1	303.3	15.7	676	2	21917	0.73	0.10	23.33%	3.69
DD004E	DD004E-309	274	275	2230.2	56.2	17.8	44.1	103.9	8.6	951.5	1.1	1012.7	260.4	166.2	12	1.9	212.7	8.7	742	2	17793	0.60	0.11	24.89%	3.00
DD004E	DD004E-311	275	276	2661	49.9	16.7	42.8	98.3	8.3	1378	1	1041.9	290.7	157.6	11.4	1.8	204.3	7.9	715	12	12980	0.70	0.10	22.19%	3.70
DD004E	DD004E-312	276	277	2458.8	46.9	15.2	42.4	95.7	7.5	1243.6	0.9	1006.8	273.5	158.6	10	1.7	186.4	7.4	949	9	21548	0.65	0.14	22.94%	3.63
DD004E	DD004E-313	277	278	2404.8	47.1	15.9	41.6	92.3	7.6	1228.4	0.9	987.6	269.1	158.7	10	1.6	187.9	7.4	859	7	21062	0.64	0.12	22.90%	3.55
DD004E	DD004E-314	278	279	2290.6	36.7	13.3	36.5	79.4	5.8	1049.9	0.9	945.7	257.8	143.9	8.2	1.5	151.4	7.5	458	4	20830	0.59	0.07	23.83%	3.51
DD004E	DD004E-315	279	280	2604.8	49.9	15.9	41.2	91.1	7.7	1279.9	0.9	1081.7	294	158.1	10.4	1.7	191.3	7.2	286	3	20778	0.68	0.04	23.46%	3.50
DD004E	DD004E-316	280	281	2456.3	49.1	15.6	40.5	92.1	7.1	1187.8	0.9	1053.6	283.6	157.7	10.6	1.6	187.2	7.1	283	2	19269	0.65	0.04	23.98%	3.25
DD004E	DD004E-317	281	282	3318.8	57.5	17.5	55.2	121.9	8.6	1603.8	0.9	1383.4	377	207.8	12.9	1.7	210.5	7.9	1131	2	24311	0.87	0.16	23.73%	4.10
DD004E	DD004E-318	282	283	3571.4	68.2	19.4	61.3	140.1	9.9	1786.9	1.2	1476.6	405.5	224.7	15.2	2	242.6	9.6	2176	3	25872	0.94	0.31	23.32%	4.36
DD004E	DD004E-320	283	284	3655.1	69.9	19.4	62.7	148.2	9.8	1836.6	1.1	1434.9	398.1	222.3	16.2	2	237	9	1881	1	23762	0.95	0.27	22.47%	4.00
DD004E	DD004E-321	284	285	3705	73	19.8	71.9	163.5	10.3	1835.2	1.1	1525.5	416.7	253.5	17.5	1.9	251.5	9.3	2313	1	19544	0.98	0.33	23.14%	3.29
DD004E	DD004E-322	285	286	3481.2	53.2	16.8	49.4	109.3	7.9	1761.2	1	1358.6	383.7	190.1	11.6	1.9	206.7	8.7	1899	2	17772	0.90	0.27	22.70%	2.99
DD004E	DD004E-323	286	287	3981.8	47.1	15.8	48.5	103.4	7.7	2000.3	1	1541	439.4	207.7	10.6	1.6	191.5	8.2	2450	2	27496	1.01	0.35	22.92%	4.63
DD004E	DD004E-324	287	288	3658.5	49.3	16.5	49.6	105.7	7.8	1800	1.1	1462.2	411.9	196.2	10.9	1.7	201.6	8.8	2342	2	24638	0.94	0.34	23.36%	4.15
DD004E	DD004E-325	288	289	3641.1	46.7	15.5	46	97.2	7.3	1798.9	1	1429.5	404.5	186.9	10.1	1.6	186.2	8.3	2424	1	24037	0.92	0.35	23.18%	4.05
DD004E	DD004E-326	289	290	2667.2	51	17.4	40.6	95.5	7.9	1323.6	1.3	1039.4	288.7	152.4	10.9	2.1	205	10.5	15532	9	15240	0.69	0.22	22.35%	2.57
DD004E	DD004E-327	290	291	3235.3	105.8	33.4	71.1	181.7	16	1590	1.9	1345.1	364.7	235	21.8	3.4	402.1	16	4333	2	20809	0.90	0.62	22.30%	3.51
DD004E	DD004E-328	291	292	2671.3	73.4	21.4	50.8	129.7	10.9	1313.4	1.4	1070.4	296.2	170.2	16.1	2.3	264.1	11.5	6236	1	13964	0.72	0.89	22.27%	2.35
DD004E	DD004E-329	292	293	3570.4	158.2	49.5	89.2	242.2	24	1783.7	3	1467.3	392.5	271.3	32.3	5.4	600.4	25.3	10543	2	23214	1.02	1.51	21.19%	3.91
DD004E	DD004E-330	293	294	3748.9	110.4	35.4	71.4	185.2	16.6	1876.2	2.1	1480.1	408	232.3	23.9	3.5	423.6	17.4	3336	2	24248	1.01	0.48	21.74%	4.09
DD004E	DD004E-331	294	295	3474.9	94.3	26	72.5	181.4	13.3	1757.1	1.5	1386.5	378.6	233.7	21.5	2.7	326.3	12.1	4412	2	21126	0.94	0.63	22.00%	3.56
DD004E	DD004E-333	295	296	3763.8	98.3	26.8	69.9	177.6	13.7	1920	1.4	1426.2	402.7	223.1	22	2.6	330.1	12	4689	1	23984	1.00	0.67	21.43%	4.04
DD004E	DD004E-334	296	297	4003.1	78.6	21.4	72	167.5	10.6	2007.7	1.3	1602.4	442.8	258.5	18.5	2.2	267	10.4	1417	<1	30059	1.05	0.20	22.72%	5.06
DD004E	DD004E-335	297	298	3953.5	66.9	21.4	58.3	129.2	10	1952.9	1.4	1567.1	438.2	222	14.9	2.2	262.4	11.5	485	<1	28783	1.02	0.07	22.91%	4.85
DD004E	DD004E-336	298	299	3929	65.8	19.5	62.3	143.8	9.6	1914.1	1.1	1562.2	434.8	229	15.7	2	240.4	8.9	685	<1	29500	1.01	0.10	23.02%	4.97
DD004E	DD004E-337	299	300	3833.1	105.5	30.8	88.1	214.7	15	1816.2	1.8	1669.6	440.8	297.2	24.6	3.2	364.7	14.8	5334	2	21664	1.05	0.76	23.54%	3.65
DD004E	DD004E-338	300	301	3903.7	88.7	25.8	86.7	194.5	12.8	1842.4	1.6	1771.9	483.5	313.9	21.5	2.6	303.6	13.5	9232	1	25956	1.06	1.32	24.60%	4.37
DD004E	DD004E-339	301	302	3667.1	135	46.7	82.9	207.5	21.6	1772.6	2.8	1559.8	414.1	276.5	26.8	4.9	550.3	23.2	7381	3	21632	1.03	1.06	22.30%	3.64
DD004E	DD004E-340	302	303	3952.5	48.8	15.7	48.2	102.9	7.5	1994.7	1	1503.3	426.6	195	10.8	1.7	195.9	8.2	323	1	30439	1.00	0.05	22.58%	5.13
DD004E	DD004E-342	303	304	3549.8	52.9	17.3	48.4	108.1	8.1	1733.2	1.2	1388.5	390.8	188.4	11.9	1.8	216.4	10.1	3280	<1	22866	0.91	0.47	22.93%	3.85
DD004E	DD004E-343	304	305	3412.1	62.3	21.1	54.7	121.6	9.5	1661.4	1.5	1349.2	375	196.6	13.9	2.4	252.5	12.4	8497	1	19923	0.88	1.22	22.74%	3.36
DD004E	DD004E-344	305	306	3692	57.3	18.9	52.5	115	8.8	1817.3	1.2	1476.7	408	205.1	12.8	2.1	229.4	10.2	4320	1	24680	0.95	0.62	23.15%	4.16
DD004E	DD004E-345	306	307	3759.3	59.5	20.4	52.9	117.1	9.3	1844.4	1.4	1495.6	417.4	210.8	13	2.3	243.6	11.3	4737	2	28013	0.97	0.68	23.06%	4.72
DD004E	DD004E-347	307	308	3540.1	56.2	18.4	50.2	114.9	8.6	1762.7	1.1	1383.4	386	191.9	12.6	2	225.5	9	4824	2	22571	0.91	0.69	22.69%	3.80
DD004E	DD004E-348	308	309	3474.2	57.4	19	53.5	117.9	8.8	1717.6	1.2	1373.1	380.4	197.7	13.1	2	230.5	10.2	4676	2	24343	0.90	0.67	22.80%	4.16
DD004E	DD004E-349	309	310	2936.6	54.6	18.4	48.9	112.8	8.4	1408.2	1.2	1167.1	321	175.1	12.4	2.1	217.9	10.3	7507	3	23239	0.76	1.07	22.80%	3.70
DD004E	DD004E-351	310	311	3234.3	58.5	20.1	55.1	125.2	9.1	1550.5	1.3	1320.5	355.5	200.6	13.5	2.1	239.2	10.9	4717	2	8973	0.84	0.88	23.18%	1.51
DD004E	DD004E-352	311	312	3303.4	65.5	19.7	59.5	136.6	9.5	1572.3	1.3	1390	373.4	211.2	14.6	2.1	246.5	10.7	2661	1	23003	0.87	0.38	23.67%	3.88
DD004E	DD004E-353	312	313	3431.1	63.1	22.2	63.2	140.2	9.9	1707.2	1.4	1421.3	385.9	226.9	14.4	2.5	264.8	11.9	2815	1	17055	0.91	0.40	23.16%	2.87
DD004E	DD004E-354	313	314	3365.4	73	24.4	62.4	140.5	11.3	1625.2	1.6	1435.1	385.3	225.5	16.3	2.5	287.4	13.6	3662	3	22571	0.90	0.52	23.62%	3.80
DD004E	DD004E-355	314	315	3952.3	59.6	18.2	65.4	141.3	8.9	1891.2	1.2	1617.3	439.3	252.4	14.1	2	234.5	10	767	2	16907	1.03	0.11	23.28%	2.85
DD004E	DD004E-356	315	316	3351.4	48.9	17.4	54.4	116.9	7.7	1593	1	1391.7	377	206.1	12.1	1.7	198.1	8.1	277	2	23393	0.87	0.04	23.85%	3.94
DD004E	DD004E-357	316	317	3529.3	56.2	19.8	56.2	122.3	9.2	1693.3	1.3	1470	395.9	215.5	12.7	2.3	235.5	11.1	193	2	23646	0.9			

Hole_ID	Sample No	Depth_From (m)	Depth_To (m)	Ce ppm	Dy ppm	Er ppm	Eu ppm	Gd ppm	Ho ppm	La ppm	Lu ppm	Nd ppm	Pr ppm	Sm ppm	Tb ppm	Tm ppm	Y ppm	Yb ppm	Nb ppm	Mo ppm	Sr ppm	TREO%	Nb2O5%	NdPr%	SrCO3%
DD004E	DD004E-404	358	359	444.3	10.8	4.5	6.3	17.5	1.7	237.1	0.6	165.1	48.8	26.3	1.9	0.7	47.9	4.9	396	20	6373	0.12	0.06	20.88%	1.07
DD004E	DD004E-405	359	360	1627	24.7	8.3	21.6	51.8	3.6	812.3	0.8	565.1	163.2	81.9	5.6	1	94.2	6.6	594	24	8316	0.41	0.09	20.91%	1.40
DD004E	DD004E-406	360	360.9	2162	24.8	8.1	26.2	60.8	3.6	1260	0.9	718.3	212.7	98.3	6.1	1	90.7	7.6	857	37	10779	0.55	0.12	19.81%	1.82
DD004E	DD004E-407	360.9	362	613.9	9.8	3.8	6.5	18.8	1.6	358.9	0.4	210.9	64.2	28.8	2.1	0	42	3.3	251	31	4983	0.16	0.04	20.06%	0.84
DD004E	DD004E-408	362	363	534.2	13	6.6	6.2	19.3	2.5	285.5	0.8	198.2	58.3	31.1	2.5	0.9	69.6	6.5	260	15	2823	0.15	0.04	20.63%	0.48
DD004E	DD004E-409	363	364	319.7	16.7	8	6.5	22.9	3.1	168.1	0.9	126	36.3	24.5	3.1	1.1	88.3	7.1	168	12	2052	0.10	0.02	19.31%	0.35
DD004E	DD004E-410	364	365	233.2	17.2	7.3	6.9	23.3	3.3	109	0.7	114.7	28.9	24.4	3.2	0.9	81.9	5.6	139	5	1596	0.08	0.02	21.50%	0.27
DD004E	DD004E-411	365	366	634.4	16	6.4	6.7	21.3	2.8	413	0.7	190.4	61.3	28.5	2.8	0.9	74.2	5.9	414	3	2384	0.17	0.06	17.07%	0.40
DD004E	DD004E-413	366	367	306	6	2.7	3.8	11.1	1	188	0.4	99.4	31.7	16.2	1.3	0	27.3	3.2	317	21	1619	0.08	0.05	18.68%	0.27
DD004E	DD004E-414	367	368	581	12.2	4.7	7.5	20.7	2	352.1	0.4	203	60.5	30.1	2.3	0.5	52.7	3.5	263	33	3460	0.16	0.04	19.66%	0.58
DD004E	DD004E-415	368	369	205.4	12	5.4	5	16.3	2	118	0.5	84.7	23.1	18.1	2.3	0.7	58.1	4.5	123	15	3707	0.07	0.02	19.20%	0.62
DD004E	DD004E-416	369	370	217.2	8.6	4.4	3.5	12	1.7	131.7	0.5	77.9	22.2	13.7	1.6	0.6	47.1	3.9	97	10	2051	0.06	0.01	18.15%	0.35
DD004E	DD004E-417	370	371	100.5	6.4	3.6	2.1	7.4	1.3	57.1	0.4	36.4	11	7.4	1.1	0	37.3	3	72	12	2452	0.03	0.01	17.03%	0.41
DD004E	DD004E-418	371	372	578.5	12.8	5.8	7	20.2	2.2	329.3	0.7	200.5	60.2	30.9	2.4	0.9	64	5.8	486	13	5320	0.16	0.07	19.61%	0.90
DD004E	DD004E-419	372	373	726	13.7	5.4	9	23	2.2	413.9	0.5	253.6	75.6	36.5	2.7	0.8	60.2	4.3	613	19	5735	0.19	0.09	20.12%	0.97
DD004E	DD004E-420	373	374	841	35.5	17.6	13.5	42.3	6.6	484.6	1.7	295	87.7	49.4	6	2.2	179.2	13.9	656	12	7113	0.24	0.09	18.27%	1.20
DD004E	DD004E-422	374	375	799.9	67.7	35.9	17.4	62.7	13.7	430.7	3	303.9	86.3	57.1	10.2	4.8	365.2	25.1	394	7	8249	0.27	0.06	16.85%	1.39
DD004E	DD004E-423	375	376	1014.6	90	61	20	71.7	20.7	497.5	5.5	361.9	102.7	66.2	12.2	8.5	586.6	45.4	624	8	8220	0.35	0.09	15.41%	1.38
DD004E	DD004E-424	376	377	434.4	11.4	4.9	5.6	16.5	2	250.5	0.6	146.3	45.1	22.2	1.9	0.8	58.7	4.9	222	22	4784	0.12	0.03	18.90%	0.81
DD004E	DD004E-425	377	378	455.3	11.3	4.8	6.5	16.9	1.8	260.2	0.6	158.5	47.7	24	2.1	0.7	51.7	5.4	267	33	4448	0.12	0.04	19.57%	0.75
DD004E	DD004E-427	378	379	506.8	16.4	6.9	8.7	24.2	3	255.6	0.6	206.4	57.8	32.9	3	0.9	80.5	5	266	6	7951	0.14	0.04	21.70%	1.34
DD004E	DD004E-428	379	380	85.4	8.5	4.9	2.2	7.9	1.7	49.9	0.6	32.4	9.1	6.9	1.3	0.8	53.1	5	37	5	3680	0.03	0.01	15.13%	0.62
DD004E	DD004E-429	380	381	1304.4	31.5	11	18.5	48.9	5	666.7	1	441.7	131	67.2	6.4	1.3	132.4	8	705	11	12003	0.34	0.10	19.81%	2.02
DD004E	DD004E-431	381	382	105.8	11.8	6.5	3.1	11.5	2.4	59.7	0.6	43	11.4	10.1	1.9	0.9	68.3	5.3	49	12	5220	0.04	0.01	15.63%	0.88
DD004E	DD004E-432	382	383	308.2	10.7	5.3	4.1	13.8	1.9	188.1	0.6	107.2	31.8	16.8	1.8	0.7	53.5	4.7	156	18	4536	0.09	0.02	18.41%	0.76
DD004E	DD004E-433	383	384	1367.7	19.5	6.1	18.5	45.7	2.7	715	0.5	533.4	149.1	78.8	4.7	0.7	70.2	4.5	459	72	8547	0.35	0.07	22.53%	1.44
DD004E	DD004E-434	384	385	1311.3	23.7	8.5	19.3	49.5	3.5	685.7	0.9	496.7	143.3	76.1	5.2	1.1	92.7	7.8	1154	17	4159	0.34	0.17	21.78%	0.70
DD004E	DD004E-435	385	386	666.5	18.7	7.6	10.7	28.4	3.2	374.1	1	244.8	71.3	35.7	3.6	1.2	89.5	8.1	691	26	5518	0.18	0.10	20.07%	0.93
DD004E	DD004E-436	386	387.2	499.8	13.8	5.9	8.3	21.5	2.3	281.1	0.8	186.8	54.6	28.6	2.7	0.9	64.2	6.6	324	22	2974	0.14	0.05	20.37%	0.50

For personal use only

## Section 1: Sampling Techniques and Data

(Criteria in this section apply to all succeeding sections)

Criteria	JORC Code explanation	Commentary
Sampling techniques	<p><i>Nature and quality of sampling (e.g. cut channels, random chips, or specific specialised industry standard measurement tools appropriate to the minerals under investigation, such as down hole gamma sondes, or handheld XRF instruments, etc). These examples should not be taken as limiting the broad meaning of sampling.</i></p> <p><i>Include reference to measures taken to ensure sample representivity and the appropriate calibration of any measurement tools or systems used.</i></p> <p><i>Aspects of the determination of mineralisation that are Material to the Public Report.</i></p> <p><i>In cases where 'industry standard' work has been done this would be relatively simple (e.g. 'reverse circulation drilling was used to obtain 1 m samples from which 3 kg was pulverised to produce a 30 g charge for fire assay'). In other cases, more explanation may be required, such as where there is coarse gold that has inherent sampling problems. Unusual commodities or mineralisation types (e.g.submarine nodules) may warrant disclosure of detailed information.</i></p>	<p>Diamond core was logged both for geological and mineralised structures as noted above with all 2025-2026 drilling geotechnically logged. The core was then cut in half using a diamond brick cutting saw on 1m intervals. Typically, the core was sampled to geological intervals as defined by the geologist within the even two metre sample intervals utilised. The right-hand side of the core was always submitted for analysis with the left side being stored in trays on site.</p> <p>Diamond core was logged both for geological and mineralised structures. The core was then cut in half using a diamond brick cutting saw on 1m intervals. Typically, the core was sampled to geological intervals as defined by the geologist within the even two metre sample intervals utilised. The right-hand side of the core was always submitted for analysis with the left side being stored in trays on site.</p> <p>All data is sourced from 2025 drilling which implemented industry and best practice QAQC program, to provide verification of the sample procedure, the sample preparation and the analytical precision and accuracy of the primary laboratory.</p> <p>Sampling and QAQC procedures were carried out to industry standards.</p> <p>Sample preparation was completed by independent international accredited laboratories. Following cutting or splitting, the samples were bagged by the independent lab in Namibia and then sent to the Jinning Lab in Western Australia (a NATA accredited Australian lab) for preparation and assaying.</p>
Drilling techniques	<p><i>Drill type (e.g. core, reverse circulation, open-hole hammer, rotary air blast, auger, Bangka, sonic, etc.) and details (e.g. core diameter, triple or standard tube, depth of diamond tails, face-sampling bit or other type, whether core is oriented and if so, by what method, etc.).</i></p>	<p>All drilling was completed by industry standard triple tube diamond drilling.</p>
Drill sample recovery	<p><i>Method of recording and assessing core and chip sample recoveries and results assessed.</i></p> <p><i>Measures taken to maximise sample recovery and ensure representative nature of the samples.</i></p> <p><i>Whether a relationship exists between sample recovery and grade and whether sample bias may have occurred due to preferential loss/gain of fine/coarse material.</i></p>	<p>All 2025-26 holes have recoveries above 95% in the majority of the mineralised areas.</p> <p>No relationship exists between sample recovery and grade</p>

For personal use only

Criteria	JORC Code explanation	Commentary
<b>Logging</b>	<p><i>Whether core and chip samples have been geologically and geotechnically logged to a level of detail to support appropriate Mineral Resource estimation, mining studies and metallurgical studies.</i></p> <p><i>Whether logging is qualitative or quantitative in nature. Core (or costean, channel, etc.) photography.</i></p> <p><i>The total length and percentage of the relevant intersections logged.</i></p>	<p>All drillholes are logged and stored at a Aldoro local facility. All core (100%) is logged in detail. Geology logging is qualitative.</p> <p>The digitised logs of the drill programme are appropriate to inform geological interpretation of the results.</p> <p>Photography and recovery measurements were carried out by assistants under a geologist's supervision.</p> <p>All drill holes were logged in full.</p> <p>Logging was qualitative and quantitative in nature.</p>
<b>Subsampling techniques and sample preparation</b>	<p><i>If core, whether cut or sawn and whether quarter, half or all core taken.</i></p> <p><i>If non-core, whether riffled, tube sampled, rotary split, etc and whether sampled wet or dry.</i></p> <p><i>For all sample types, the nature, quality, and appropriateness of the sample preparation technique.</i></p> <p><i>Quality control procedures adopted for all subsampling stages to maximise representivity of samples.</i></p> <p><i>Measures taken to ensure that the sampling is representative of the in-situ material collected, including for instance results for field duplicate/second-half sampling.</i></p> <p><i>Whether sample sizes are appropriate to the grain size of the material being sampled.</i></p>	<p>NTW core was cut in half using a core saw. Typically, the core was sampled to major geological intervals as defined by the geologist initially within the even 1m. All samples were collected from the same side of the core.</p> <p>Sampling of diamond core used industry standard techniques. After drying the sample is subject to a primary crush to 2mm. Sample is split through a riffle splitter until 250gm is left (this involves 4-5 splits through the riffle splitter).</p> <p>The 250-gm sample is milled through an LM5 using a single puck to 90% &lt;75 micron.</p> <p>Milled sample is homogenised through a matt roll with a 150gm routine sample collected using a spoon around the quadrants and sent to MSA and Intertek for analysis.</p> <p>Field QC procedures involved the use of two types of certified reference materials (1 in 20) which is certified by Geostats Ltd,</p> <p>Primary DD duplicate: Generated by cutting the remaining half core into a ¼ and sampled.</p> <p>Coarse blank samples: Inserted 1 in every 20 samples</p> <p>Sample sizes are considered appropriate to cover the variation in textures from aphanitic to porphyritic to minimise any grainsize bias with larger NTW core used and the prep sample being sufficiently large to overcome textural bias.</p>
<b>Quality of assay data and laboratory tests</b>	<p><i>The nature, quality and appropriateness of the assaying and laboratory procedures used and whether the technique is considered partial or total.</i></p> <p><i>For geophysical tools, spectrometers, handheld XRF instruments, etc, the parameters used in determining</i></p>	<p>The NB Nambian Lab completed the sample preparation including crushing and pulverisation after drying at 80deg C. Subsequently these samples are sent to the Australian Lab (Jinning Testing and Inspection) for analysis.</p>

Criteria	JORC Code explanation	Commentary
	<p><i>the analysis including instrument make and model, reading times, calibrations factors applied and their derivation, etc.</i></p> <p><i>Nature of quality control procedures adopted (e.g. standards, blanks, duplicates, external laboratory checks) and whether acceptable levels of accuracy (i.e. lack of bias) and precision have been established.</i></p>	<p>Due to the refraction nature of REE's a Fusion technique was used for all analyses.</p> <p>The samples were fused in a furnace (~650°C.) with Sodium Peroxide in a nickel crucible. The melt is dissolved in dilute Hydrochloric acid and the solution analysed. This technique provides almost complete dissolution of most minerals including silicates with the elements finished by ICP_OES for majors and ICP-MS for trace elements.</p> <p>A definitive QAQC program was implemented to provide verification of the sample procedure, the sample preparation and the analytical precision and accuracy of the primary laboratory, which includes the following:</p> <p>Certified Reference Material (CRM) samples: 2 (two) types of standards sourced from OREAS Ltd. were inserted 1 in every 20 samples</p> <p>Coarse blank samples: Inserted 1 in every 20 samples to monitor cross contamination</p> <p>A blank sample and crusher and pulp duplicate sample were inserted for every hole. The laboratory also inserted QAQC samples, including laboratory standards and CRMs.</p> <p>Overall, 12.5% of the samples submitted to the primary assay lab were QAQC samples. The QAQC procedures undertaken show that returned results are within acceptable limits.</p> <p>Results are considered as acceptable by the Competent Person and the drill samples are considered to be suitable for reporting of exploration results.</p>
<b>Verification of sampling and assaying</b>	<p><i>The verification of significant intersections by either independent or alternative company personnel.</i></p> <p><i>The use of twinned holes.</i></p> <p><i>Documentation of primary data, data entry procedures, data verification, data storage (physical and electronic) protocols.</i></p> <p><i>Discuss any adjustment to assay data.</i></p>	<p>Geological logs are digitally entered into data entry templates in MS Excel.</p> <p>Assay certificates were received from the NATA approved analytical laboratories and imported into the drill database.</p> <p>No adjustments have been made to the data other than conversion to oxides using standard stoichiometry conversion factors.</p>
<b>Location of data points</b>	<p><i>Accuracy and quality of surveys used to locate drillholes (collar and downhole surveys), trenches, mine workings and other locations used in Mineral Resource estimation.</i></p> <p><i>Specification of the grid system used.</i></p>	<p>Diamond drilling collar data have been located with high precision survey tool. The resultant locations are appropriate for resource estimation.</p>

Criteria	JORC Code explanation	Commentary
	<i>Quality and adequacy of topographic control.</i>	Down-hole surveying of dip and azimuth (true) for diamond holes was conducted using an 'Axis' a reflex camera.
<b>Data spacing and distribution</b>	<p><i>Data spacing for reporting of Exploration Results.</i></p> <p><i>Whether the data spacing and distribution is sufficient to establish the degree of geological and grade continuity appropriate for the Mineral Resource and Ore Reserve estimation procedure(s) and classifications applied.</i></p> <p><i>Whether sample compositing has been applied.</i></p>	<p>Drill holes are done on a radial arc from multiple access points due to the steep high relief and not standard pattern drilling. This approach is considered sufficient for resources estimation especially with the increasing number of holes. Sampling down hole is consistent with conventional methodology with assay continuous down hole at regular 1m or less intervals.</p> <p>Sample compositing was not carried out.</p>
<b>Orientation of data in relation to geological structure</b>	<p><i>Whether the orientation of sampling achieves unbiased sampling of possible structures and the extent to which this is known, considering the deposit type.</i></p> <p><i>If the relationship between the drilling orientation and the orientation of key mineralised structures is considered to have introduced a sampling bias, this should be assessed and reported if material.</i></p>	<p>At this stage with a second phase of drilling increasing knowledge and understanding of the lithologies, their mineralisation style and distribution becoming is increasing understood in detail. The mineralisation is lithologically controlled over structural control governed by increasing high iron levels.</p> <p>The drilling crosscuts the mineralised beforite dykes and sovitic cores and is therefore not biased towards specific phases if the intrusion as evidenced in the assays which reveal the REE and Nb rich zones downhole.</p>
<b>Sample security</b>	<i>The measures taken to ensure sample security.</i>	<p>Half core was secured, covered and transported to the NB Namibia lab for core cutting facility securely bagged, A pulp fraction was sent to the Australian Lab for assay.</p> <p>All transport was overseen by either company staff, to the initial sample prep lab, and subsequently by independent personnel.</p>
<b>Audits or reviews</b>	<i>The results of any audits or reviews of sampling techniques and data.</i>	No audits or reviews of sampling techniques and data have been carried out.

## Section 2: Reporting of Exploration Results

(Criteria listed in the preceding section also apply to this section)

Criteria	JORC Code explanation	Commentary
<b>Mineral tenement and land tenure status</b>	<i>Type, reference name/number, location and ownership including agreements or material issues with third parties such as joint ventures, partnerships, overriding royalties, native title interests, historical sites, wilderness or national park and environmental settings.</i>	The Competent Person is aware the Namibian Ministry of Mines and Energy approved the transfer of the Kameelburg Project's Exclusive Prospecting Licenses (EPL 7372, 7373 and 7895) from Logan Exploration & Investments CC to the Aldoro JV operating company Kameelburg Exploration Mining

For personal use only

Criteria	JORC Code explanation	Commentary
	<i>The security of the tenure held at the time of reporting along with any known impediments to obtaining a licence to operate in the area.</i>	(Pty) Ltd. The Competent Person is unaware of any impediments for ongoing exploration
<b>Exploration done by other parties</b>	<i>Acknowledgment and appraisal of exploration by other parties.</i>	Limited exploration work has been completed by previous owners, with all rock chips and soil sampling previously reporting publicly.
<b>Geology</b>	<i>Deposit type, geological setting and style of mineralisation.</i>	The mineralisation style being sought at carbonate hosted REE and Nb, associated with magnetite. The style of mineralisation is interpreted to be similar to the Niobec Sant Honore deposit in Canada. The Kameelburg Project is located in the northern Central Damara Orogenic Belt in Namibia and covers the Cretaceous Kameelburg Carbonatite plug and associated radial dykes intruding precursor syenites in the older host Neoproterozoic marbles and schists. The plug is approximately 1.4km in diameter and rises up to 275m above the surrounding peneplain. The intrusion consists of an initial pre-cursor phase of nepheline syenite/syenite followed by two sovitite and three beforosite phases with remanent rafts of volcanic breccia and syenite, the vestiges of earlier intrusive phases. The country rock consists of marbles, quartzite's, mica schists of the Damara Supergroup. Rare earth metals are known to occur in all five phases with higher concentrations in the more magnesium and iron rich beforosites.
<b>Drillhole information</b>	<i>A summary of all information material to the understanding of the exploration results including a tabulation of the following information for all Material drillholes: easting and northing of the drillhole collar elevation or RL (Reduced Level – elevation above sea level in metres) of the drillhole collar dip and azimuth of the hole downhole length and interception depth hole length. If the exclusion of this information is justified on the basis that the information is not Material and this exclusion does not detract from the understanding of the report, the Competent Person should clearly explain why this is the case.</i>	Provided in the main body of the release.
<b>Data aggregation methods</b>	<i>In reporting Exploration Results, weighting averaging techniques, maximum and/or minimum grade truncations (e.g. cutting of high grades) and cut-off grades are usually Material and should be stated. Where aggregate intercepts incorporate short lengths of high-grade results and longer lengths of low-grade results, the procedure used for such aggregation should be stated and some typical examples of such aggregations should be shown in detail.</i>	The exploration results are reported above using a 1% TREO cutoff grade and a 0.2% Nb <sub>2</sub> O <sub>5</sub> cutoff as noted in the main body of the release. No weighting was applied, nor high grade cuts.  No metal equivalents were utilised in the reporting of the exploration results.

Criteria	JORC Code explanation	Commentary
	<i>The assumptions used for any reporting of metal equivalent values should be clearly stated.</i>	
<b>Relationship between mineralisation widths and intercept lengths</b>	<p><i>These relationships are particularly important in the reporting of Exploration Results.</i></p> <p><i>If the geometry of the mineralisation with respect to the drillhole angle is known, its nature should be reported.</i></p> <p><i>If it is not known and only the downhole lengths are reported, there should be a clear statement to this effect (e.g. 'downhole length, true width not known').</i></p>	<p>No relationship has been established at present due to the early stage of exploration.</p> <p>With additional exploration this will be reviewed.</p> <p>All widths are downhole with the true widths not reported.</p>
<b>Diagrams</b>	<i>Appropriate maps and sections (with scales) and tabulations of intercepts should be included for any significant discovery being reported. These should include, but not be limited to a plan view of drillhole collar locations and appropriate sectional views.</i>	Maps and sections in body of text
<b>Balanced reporting</b>	<i>Where comprehensive reporting of all Exploration Results is not practicable, representative reporting of both low and high grades and/or widths should be practiced to avoid misleading reporting of Exploration Results.</i>	Only pertinent results are included given the scope of this announcement
<b>Other substantive exploration data</b>	<i>Other exploration data, if meaningful and material, should be reported including (but not limited to): geological observations; geophysical survey results; geochemical survey results; bulk samples – size and method of treatment; metallurgical test results; bulk density, groundwater, geotechnical and rock characteristics; potential deleterious or contaminating substances.</i>	No material information has been withheld for the project.
<b>Further work</b>	<p><i>The nature and scale of planned further work (e.g. tests for lateral extensions or depth extensions or large-scale step-out drilling).</i></p> <p><i>Diagrams clearly highlighting the areas of possible extensions, including the main geological interpretations and future drilling areas, provided this information is not commercially sensitive.</i></p>	<p>The continuation of drilling programme is planned as per the drill collar table presented in this report. The drilling programme is designed to contribute towards an undated MRE with increased confidence from the maiden report.</p> <p>Diagrams are provided in the main body of the release.</p>