

AuKing to Acquire High-Grade Tundulu Rare Earths Project in Malawi and Strategic Placement

Highlights

- AuKing to acquire 100% of the Tundulu Rare Earths Project in south-eastern Malawi – a 5km in diameter intrusive carbonatite complex¹, ranking among the largest and most under-explored rare earth systems in the country. The Project is de-risked by high-grade historical drilling (originally targeting phosphate), highlighting strong potential for a significant rare earth discovery applying modern and REE targeted exploration.
- Established **carbonatite-hosted rare earths system** with historical **high-grade drilling results**, including²:

JICA drilling (1987, max depth 50m):

- **41m @ 3.7% TREO from 8m (JMT-22) (hole ending in mineralisation)**
- **35m @ 2.7% TREO from 15m incl 14m @ 4.1% TREO from 36m (JMT-17) (hole ending in mineralisation)**

Mota-Engil / Optichem drilling (2014-2015, average hole depth 127m, with several holes ending in high-grade REE mineralisation, while targeting phosphate):

- **15m @ 3.46% TREO from 73m (TU071)**
- **31m @ 2.27% TREO from 41m (TU048)**
- **30m @ 4.03% TREO from surface (TU014)**
- **100m @ 12.6% P₂O₅ from 30m (TU042) and**
- **97m @ 14.4% P₂O₅ from surface (TU050)**
- Total of 24 historical drill holes conducted across the project area ended in mineralisation including 8 drill holes that ended in **greater than 2% TREO**. By way of example drill hole TU073 recorded **10m @ 3.13% TREO from 113m to end of hole (EOH)**.
- Drilling at **Nathace Hill** has confirmed carbonatite geology, representing one of five topographic highs across the Tundulu Project, with strong potential for **Makhanga Hill, Namuka Hill, Ichigwakalu Hill and Tundulu Hill** to host carbonatite mineralisation.
- Historical rock chip samples from JICA program in 1988 returned assays (to be drill tested) including:
 - **6.07% TREO at Tundulu Hill eastern flank (sample 7Y196)**
 - **6.41% TREO at Nathace Hill (sample 7Y386)**
- Located within an emerging world class rare earths district in southern Malawi, in proximity to Lindian Resources' Kangankunde Project (261Mt @ 2.61% TREO) and the Songwe Hill Project (21Mt @ 1.41% TREO).
- Mineralisation appears high in valuable heavy rare earth elements (HREEs) and medium rare earth elements (MREEs), with low levels of uranium and thorium.³

¹ Garson, M.S. 1962: The Tundulu carbonatite ring-complex in southern Nyasaland.

² Drilling programs by Japanese International Co-operation Agency (JICA) in 1987 and Mota-Engil/Optichem JV in 2014. (Refer cautionary statement on page 11 of this Release regarding these historical drilling results).

³ DY6 Metals Ltd (now Tusker Minerals Ltd) 27 May 2024 ASX Release, page 4.

AuKing’s Managing Director Paul Williams said: *“The proposed acquisition of the Tundulu Rare Earths Project represents a further exciting step in AuKing’s strategy to build exposure to critical minerals through high-quality exploration assets.”*

“Tundulu is a district-scale carbonatite ring complex in southern Malawi with an interesting profile of bastnaesite and apatite containing abundant rare earth mineralisation and easily accessible by road. AuKing intends to commence exploration activities following completion of the acquisition, with an initial drilling program planned to advance understanding of the mineralisation. Subject to results, the Company is targeting the delivery of an initial Mineral Resource estimate within the next 12 months.”

AuKing Mining Limited (ASX: AKN) (“AuKing” or “the Company”) has agreed to acquire a 100% interest in the Tundulu Rare Earth Elements (REE) project in south-eastern Malawi (Proposed Acquisition).

Tundulu Project Overview

The Tundulu Rare Earth Elements (REE) Project comprises an area of 91.5 km² within exploration licence EL 0731/24. The licence area is located approx. 70km south-east of the city of Zomba and 90km east of Blantyre, in the Phalombe District of the Southern Region of Malawi. All-weather roads link these centres with the town of Migowi, approximately 25 km from Tundulu, which is accessible by dirt/gravel roads. Migowi is connected to the national electricity grid. The Tundulu area has a sub-tropical climate with average annual rainfall between 900-1400mm.

Tundulu is a well-known carbonatite complex in southern Malawi, enriched in REE mineralisation. The Project is formed of several hills in a ring around a central vent called Nathace Hill where the majority of historical surface sampling and drilling has been undertaken.

The predominant geology at Nathace Hill is REE and apatite rich carbonatites and feldspathic breccias and comprises a large inner agglomerate vent. Mineral rich carbonatite also occurs at Tundulu Hill to the east of Nathace Hill and Makhanga Hill to the west of Nathace and is largely unexplored and prospective for REEs.

The occurrence of carbonatites is widespread across the region in the presence of fenites and breccias, with lesser but significant mineralisation in the breccia/agglomerate. The rare earth carbonatite shows the highest grades of REE whilst the other host mineral, apatite, has phosphate grades ranging from approximately 5% to 30% P₂O₅. Lithological strip logs of the drillholes also shows a good correlation between rich apatite (P₂O₅) and abundant HREE.

The carbonatite outcrops are vast and abundant with similar geological settings along the eastern, southern and western side of Nathace Hill and Tundulu Hill above ground level and at higher elevation. The two types of REE mineralised carbonatites are present over an area of 800m east-west around the agglomerate intrusive structure of Nathace Hill. The mineralised body of Nathace Hill is predominantly a carbonatite intrusion and REE mineralisation remains open in multiple

directions with significant potential to identify extensions in the western area of Nathace Hill and towards the peak of the inner agglomerate vent.

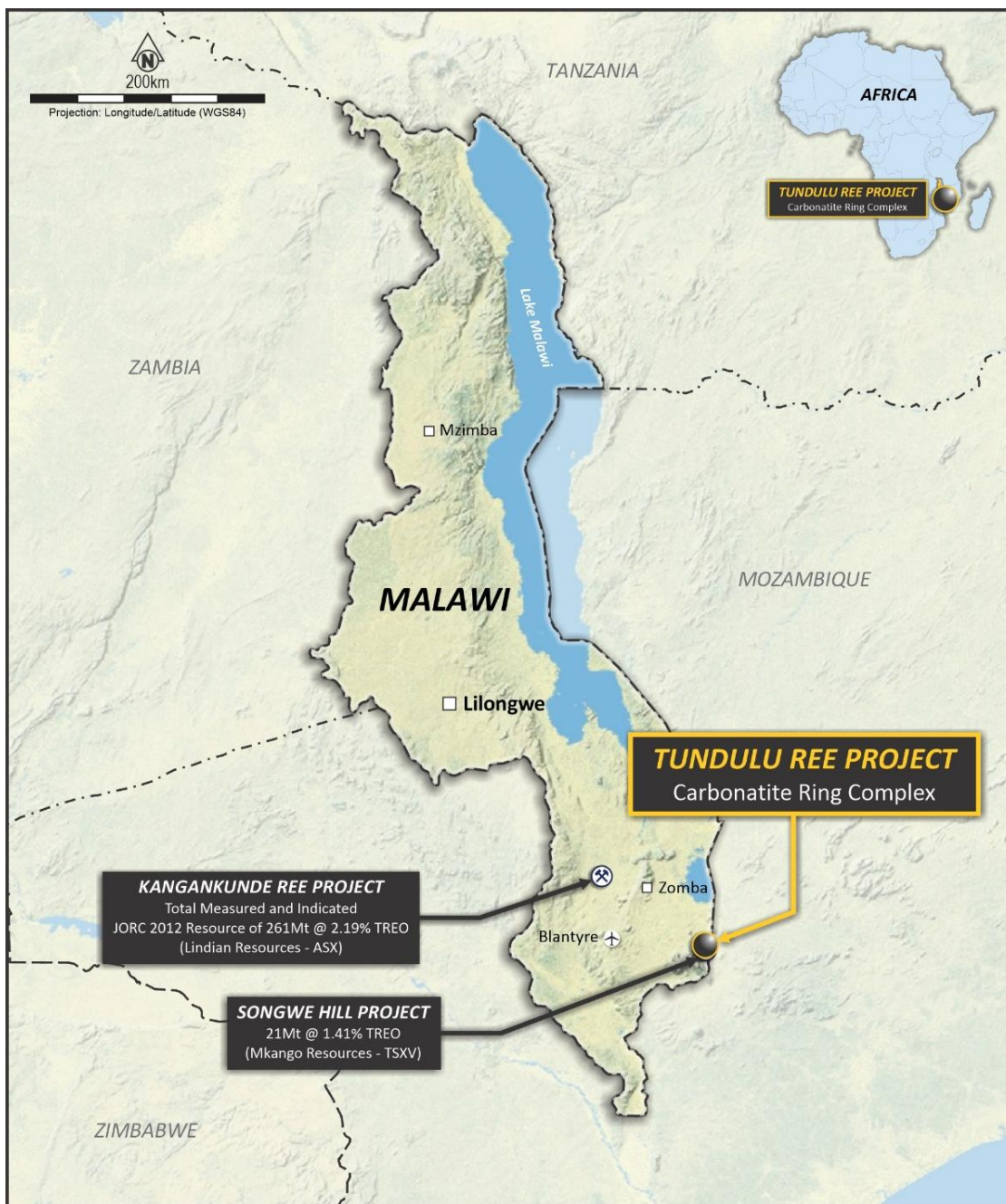


Figure 1 – Tundulu Project location

Exploration History

The Tundulu Project was first discovered in 1962 by British geologist M.S. Garson. Regional exploration, including over Tundulu, was subsequently undertaken by the Japanese International Cooperation Agency (JICA) in the late 1980s.

At Tundulu, JICA completed 27 drill holes for a total of 1,204.8 metres, with a maximum depth of 50 metres.

For personal use only

More recent exploration was undertaken by Mota-Engil Minerals & Mining and Optichem between 2014 and 2015. This work included 55 drill holes for a total of 7,002 metres, comprising predominantly reverse circulation drillholes with an average depth of 127m. Several holes intersected mineralisation to end of hole, including TU105B, TU110, TU094, TU087 and TU073⁴.

Historical drilling at Tundulu has identified several continuous zones of high-grade mineralisation and lithological data indicates the presence of REE mineralisation in two types of carbonates, namely a rare earth-rich carbonatite and an apatite carbonatite.

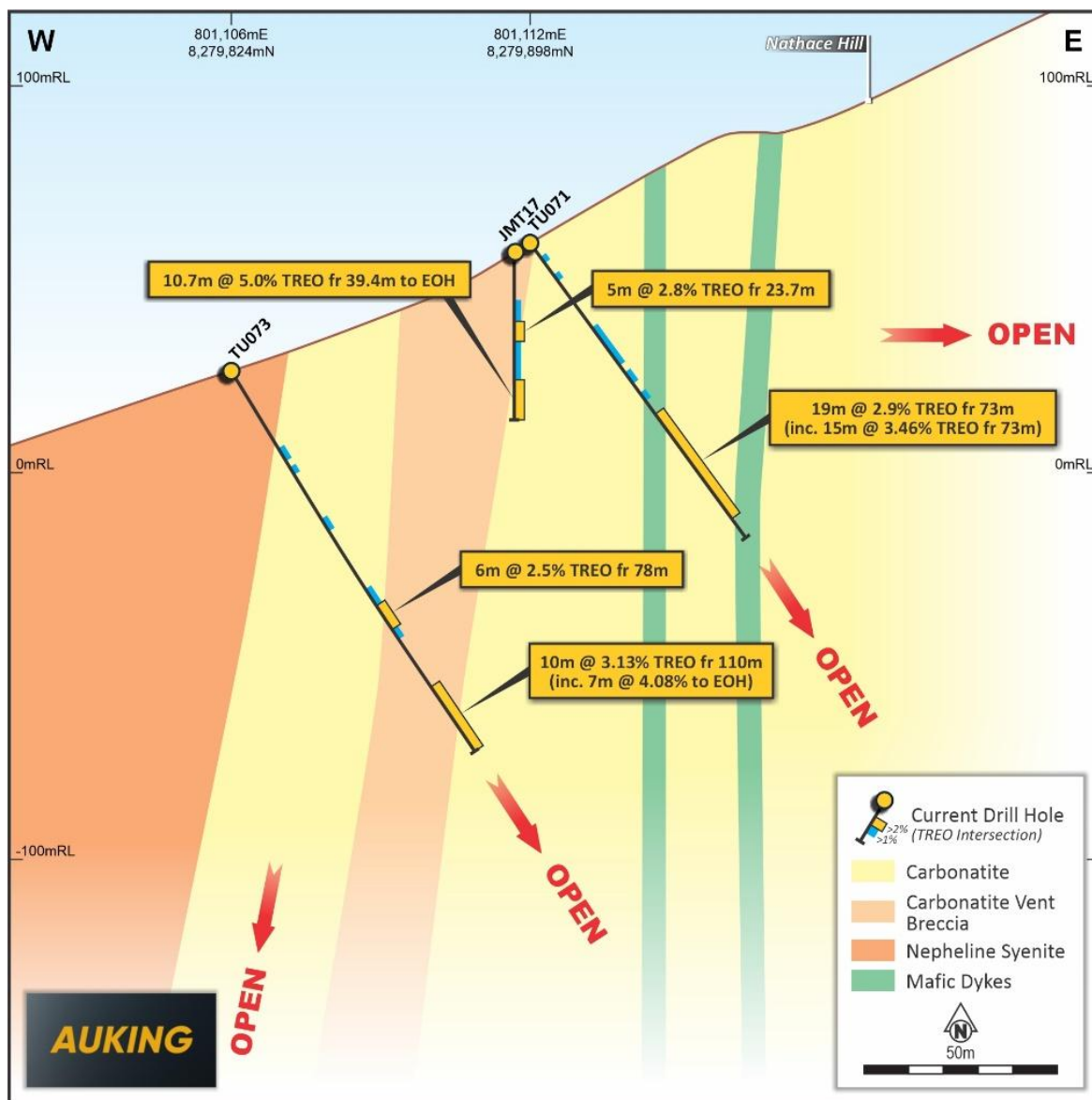


Figure 2 – Cross-section diagram, western side of Nathace Hill

⁴ ASX Release by DY6 Metals Ltd (now Tusker Minerals Ltd) on 27 May 2024, page 1.

Nearby world-class REE deposits – Kangankunde and Songwe Hill

The Tundulu Project is situated near some of the world’s best undeveloped rare earths deposits namely, Lindian Resources’ Kangankunde Project, which is currently under construction and advancing towards first production, and Mkango Minerals’ Songwe Hill Project.

For personal use only

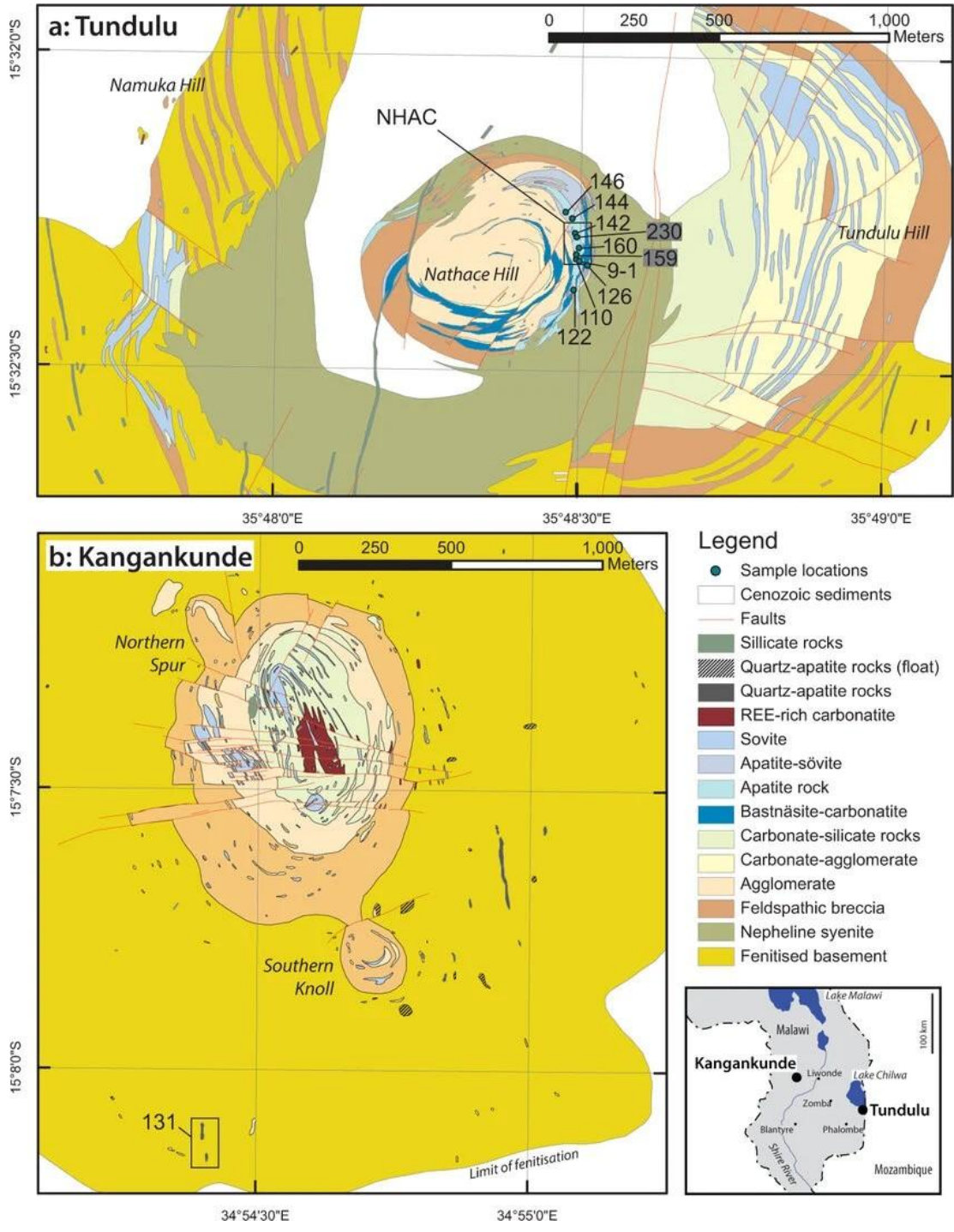


Figure 4 – Geological maps of Tundulu and Kangankunde (owned by Lindian ~A\$1.68b), Source – Broom-Fendley, Styles, Appleton, Gunn and Wall “American Mineralogist Vol 101, 2016”. Note – the samples shown in Figure 4a were taken by Appleton in 1988 and Broom-Findley in 2011 and are detailed on pages 620, 603 and 607 of that Report

Kangankunde (Lindian Resources):

- Mineral Resource of ~261Mt at ~2.19% TREO (containing ~5.7Mt TREO)⁵.
- Recently completed a A\$100M capital raising
- Current Lindian (ASX) share market capitalisation value is ~\$1.68Bn.

Songwe Hill (Mkango Resources):

- Measured + Indicated resource of 21Mt at 1.41% TREO (containing ~297,000 tonnes TREO)⁶.
- Current Mkango Minerals (TSX-V) share market capitalisation value is A\$286M.

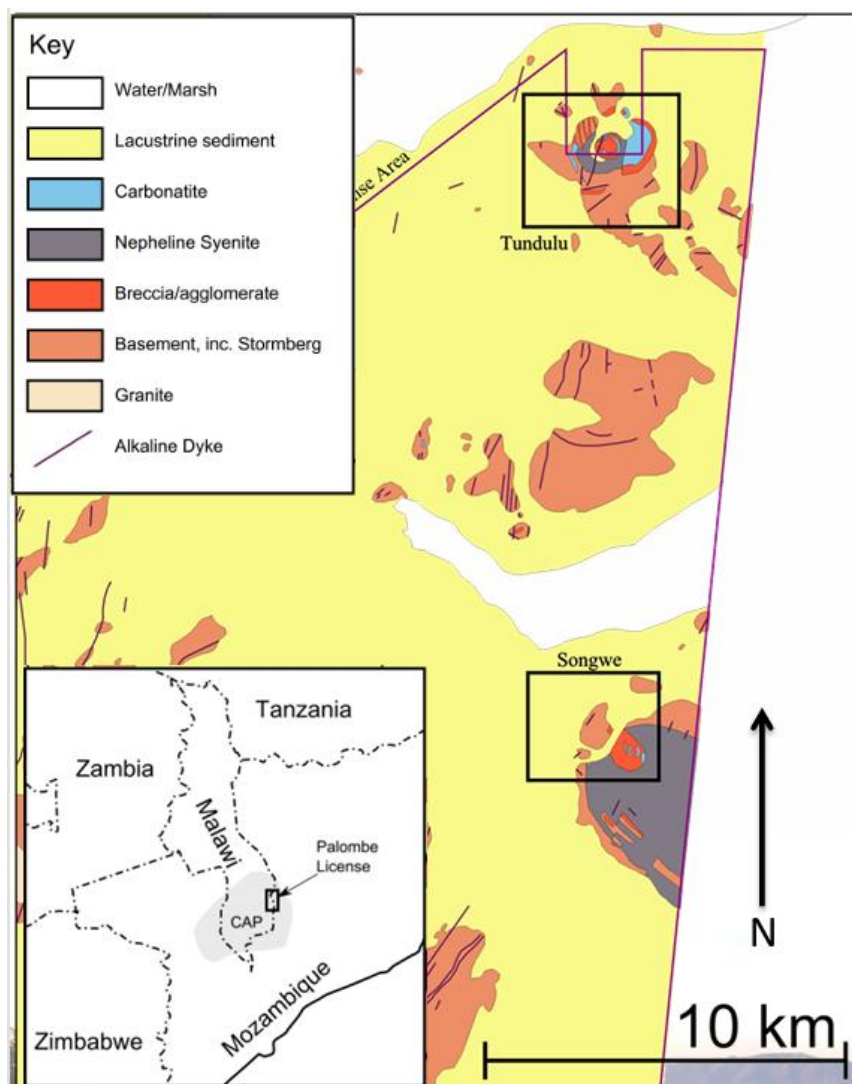


Figure 5 – Geological maps of Tundulu and Songwe Hill (owned by Mkango ~A\$308m), Source – Broom-Fendley et al “2013/Sweden August 2013 SGA Conference Extracts.”

Note – Proximate Statements

This announcement contains references to JORC and NI 43-101 Mineral Resources derived by other parties either nearby or proximate to the Tundulu Project and includes references to

⁵ LIN releases to ASX 3 August 2023 and 1 April 2026

⁶ Mkango Press Release 4 February 2019

topographical or geological similarities to that of the Project. It is important to note that such discoveries or geological similarities do not in any way guarantee that the Company will have any success or similar successes in delineating a JORC compliant Mineral Resource on the Tundulu Project, if at all.

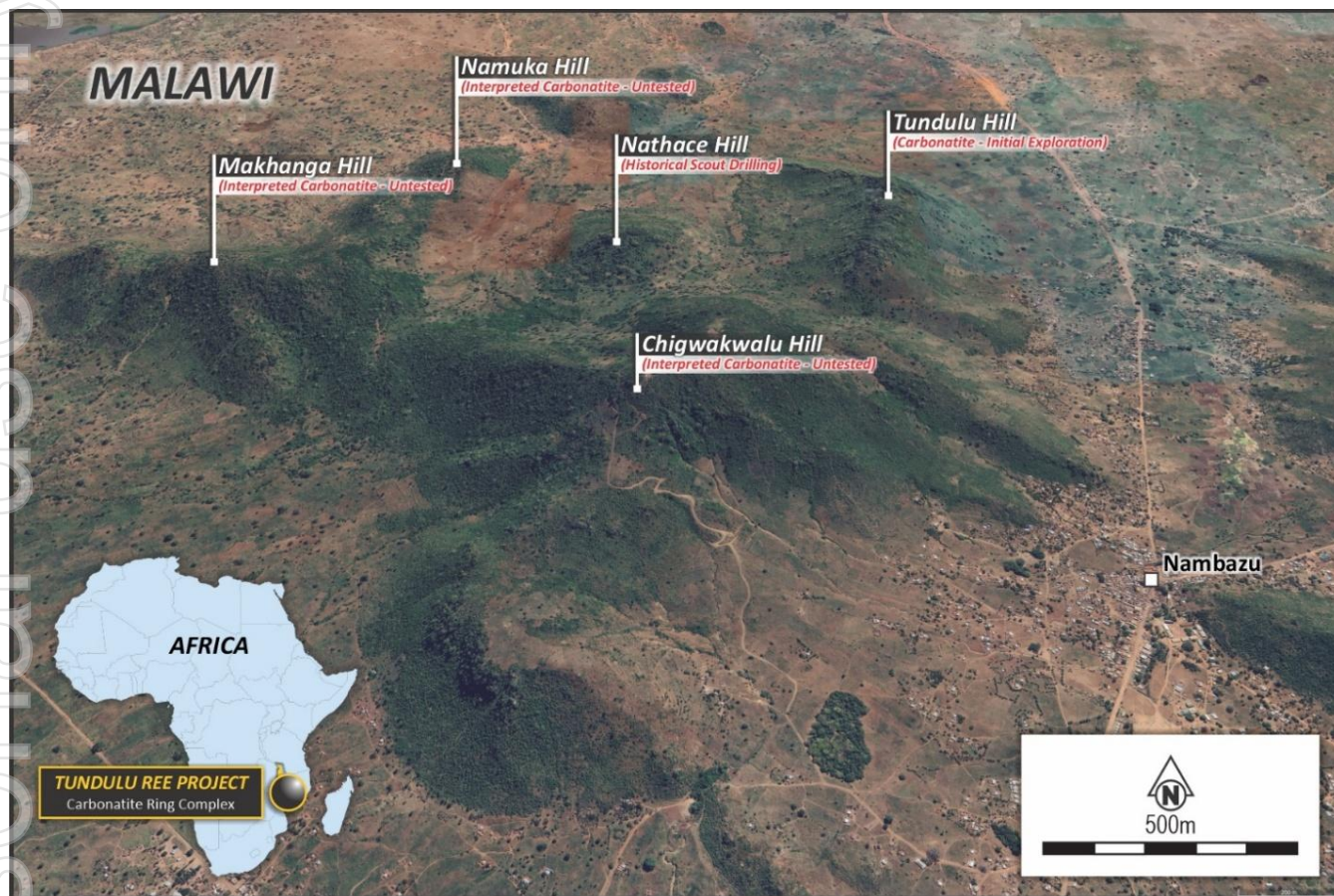


Figure 3 – Google Earth view of Tundulu Hill and surrounding prospects, near the township of Nambazu

Historical Exploration

The Tundulu carbonatite complex was first described by M.S. Garson in 1962 in *The Tundulu Carbonatite Ring-Complex in Southern Nyasaland* (Memoir No. 2, Geological Survey of Nyasaland).

JICA Drilling Program (1987)

The Japanese International Cooperation Agency (JICA) undertook regional exploration, including drilling at Tundulu, in 1987, with results reported in 1988. At Tundulu, JICA completed 27 drill holes for a total of 1,204.8 metres, with a maximum depth of 50 metres.

Full results are provided in Annexure B. It should be noted that the JICA results did not include the full suite of REEs, but only Ce, Eu, La, Nd, Sm, Tb & Y.

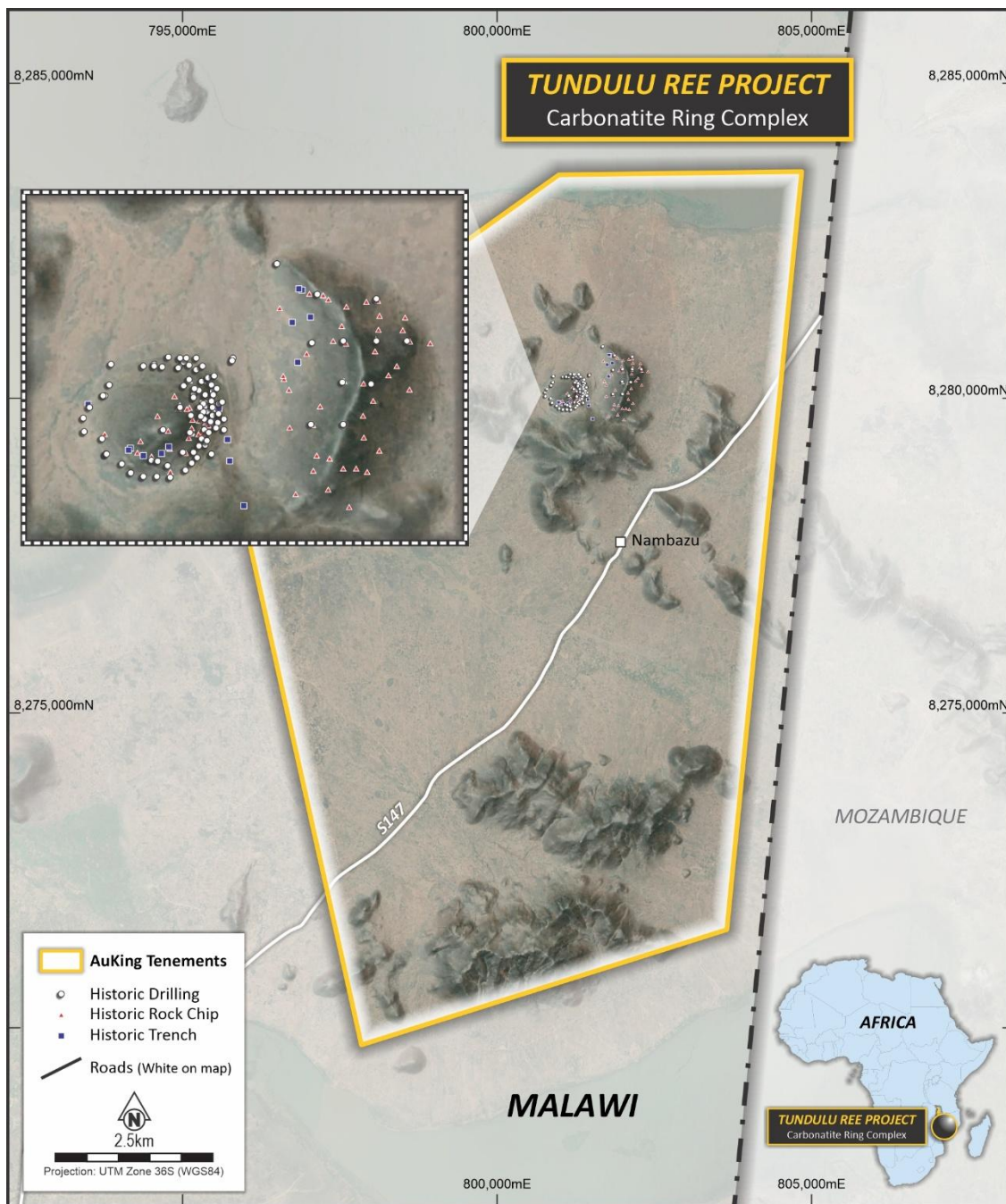


Figure 6 – Map of historical drilling at Tundulu – Note the drillholes are from the JICA drilling in 1987 and Mota-Engil/Optichem drilling in 2014-15, the rock ships by JICA, and the DY6/Tusker trenching further details of which are set out in Appendix C

Mota-Engil / Optichem Drilling Program (2014–2015)

Nathace Hill, located at the centre of the Tundulu complex, was previously held by Optichem 2000 Ltd., a Malawian fertiliser company, for phosphate extraction. Through a joint venture with Optichem, Mota-Engil Minerals and Mining evaluated the REE potential of Nathace Hill.

A total of 55 drill holes were completed for 7,002 metres, supported by reopening of 11 historic trenches and a ground radiometric survey. Drilling reached an average depth of 127 metres, with the deepest hole at 221 metres.

For personal use only

Several holes ended in mineralisation, including TU105B, TU110, TU094, TU087 and TU073.⁷ The historical drilling results indicate that the mineralisation is high in valuable medium rare earth elements (MREEs), with low measurable radioactive uranium (U).

These initial interpretations are taken from the historic drill assay results shown in Appendix B. Taking into account the significant intersections listed in Appendix B, a weighted average grade of 18.7ppm U can be determined for the mineralisation and is considered non-naturally occurring radioactive materials (non-NORM)⁸.

Historical reconnaissance sampling⁹

Eighty-five geochemical samples (See Appendix C) collected by JICA in 1988, largely focused on the REE and phosphate carbonatites and related feldspathic and syenite rocks over Tundulu and the eastern side of Nathace Hill. The historic results confirm high REE and phosphate mineralisation in the outcrop samples, with 25 samples returning >1 wt.% TREO and the highest individual surface sample of 6.4 wt.% TREO. P₂O₅ mineralisation was encountered throughout the sampled outcrops (See Table 1 below).

Sample ID	X	Y	P ppm	P ₂ O ₅ wt%	TREO wt%
7Y385	801314	8280120	136541	31.3	1.34
7Y327	801395	8280154	127714	29.3	1.16
7Y358	801306	8280027	123901	28.4	1.75
7Y341	801307	8280153	120817	27.7	1.34
7Y384	801314	8280105	111477	25.5	1.46
7Y383	801309	8280092	109790	25.2	1.12
7Y388	801339	8280082	103707	23.8	1.00
7Y337	801314	8280152	91284	20.9	1.49
7Y179	800864	8280028	42094	9.6	1.86
7Y196	802397	8280454	24516	5.6	6.07
7Y185	801085	8279923	15367	3.5	1.13
7Y184	801170	8279959	7539	1.7	4.01

Table 1 – Summary of significant TREO results from JICA rock chips over Nathace and Tundulu Hill

Notably several of the high-grade apatite carbonatite samples also exhibited high rare earth mineralisation. The litho-geochemical results indicating two types of REE mineralisation in carbonatite exhibiting high TREO and low P₂O₅ and the other apatite carbonatite with high P₂O₅ and lower TREO.

Tusker Minerals completed two reconnaissance field visits to Nathace and Tundulu Hill in December 2023 and February 2024 to confirm the nature and extent of the REE mineralised outcrops identified by previous explorers and to collect random rock chips near previous

⁷ ASX Release by DY6 Metals Ltd (now Tusker Minerals Ltd) on 27 May 2024, page 1 highlights.

⁸ DY6 Metals 27 May 2024 ASX Release, page 4.

⁹ DY6 Metals 27 May 2024 ASX Release, page 5.

exploration activity. A total of 16 samples were assayed, with five returning grades of over 1% TREO, validating the previous targeted sampling (See Table in Appendix C).

A channel sampling program was previously undertaken in 2014 for 10 trenches totalling 600m in an east-west orientation. A summary of the trench results is presented in Appendix C (c). Each trench was geologically logged. Geological mapping identified mineralised zones and confirmed continuity of rare earth carbonatite mineralisation at surface with trench 10 showing significant TREO values up to 4.6 wt.% and 20m at >2 wt.% TREO¹⁰.



Figure 7 – Tundulu Hill geological setting enriched with carbonatite outcrops and Nathace Hill in the background.

Tundulu Next Steps

Applying modern exploration techniques, AuKing's next steps include utilising airborne (drone-based) LIDAR and magnetics to understand the structural controls on the mineralising phases of the system and aid in planning AuKing's initial drilling program at Tundulu. The initial drilling program serves a dual purpose namely, to both extend the continuity of the known mineralisation to the north, south and west of Nathace Hill (intersecting identified structures targeting zones of hydrothermally upgraded REE) and also to define additional resources at Tundulu Hill, where historical anomalous rock chip samples and shallow drilling have all given indications of a much larger system than what has been previously targeted. Initial mineralogy and metallurgical testwork will also be undertaken on representative drillhole samples.

¹⁰ DY6 Metals 27 May 2024 ASX Release, page 9.

Cautionary Statement Regarding Historical Exploration Results

The historical exploration referred to in this release were not prepared or reported in accordance with the JORC Code 2012.

A Competent Person has not completed sufficient work to disclose the exploration results in accordance with the JORC Code 2012.

It is possible that, following further evaluation and/or exploration work, the confidence in the historical results may be reduced when reported under the JORC Code 2012.

Nothing has come to the attention of AuKing that causes it to question the accuracy or reliability of the former owners' exploration results. However, AuKing has not independently validated those exploration results and therefore does not adopt, endorse or report them as JORC 2012 compliant.

Transaction Structure

The Proposed Acquisition comprises the following staged consideration:

Exclusivity Payment

A non-refundable A\$50,000 cash payment (already paid) to secure a 40-day exclusivity period, during which:

- (a) AuKing has completed satisfactory legal and technical due diligence;
- (b) AuKing and TSK having obtained ASX clearance under Chapter 11 of the ASX Listing Rules; and
- (c) Binding transaction documentation has been finalised and signed by the parties.

Each of the actions in (a), (b), and (c) above have now been completed.

On Completion

A\$1,000,000 cash and:

- (a) A\$1,250,000 in fully paid ordinary AKN shares issued (subject to voluntary restriction as set out below) on the same terms as the proposed capital raising to be undertaken by AuKing in connection with the Proposed Acquisition (see details below); and
- (b) A\$1,000,000 in performance shares, subject to milestone-based consideration set out below. A total of 57,142,857 performance shares will be issued at a price of \$0.0175 per security.

Each of the shares listed in (a) and (b) above will be issued by the Company pursuant to its existing capacity under ASX Listing Rule 7.1.

TSK will agree to voluntarily escrow the shares in para (a) above for a 12-month period, pursuant to a suitable deed to that effect.

- A\$1,100,000 cash payment to TSK within 6 months of completion; and
- A\$1,100,000 payable within 12 months of completion.

The performance shares will convert into fully paid ordinary shares upon satisfaction of a defined performance milestone (Performance Hurdle), being the reporting of a JORC-compliant Mineral Resource of at least 25Mt at 1.25% TREO at the Tundulu Project.

The performance shares shall be satisfied by AKN issuing that number of ordinary shares at the 90-day VWAP as at the date of satisfaction of the Performance Hurdle subject to a maximum of 1 ordinary share for each performance share. In other words, each performance share will convert based on the formula $\$0.0175 / (90 \text{ day VWAP})$ subject to a maximum conversion rate of 1 ordinary share for each performance share.

Completion of the Proposed Acquisition is subject to approval for the transfer of the Tundulu licence to AuKing's subsidiary Tundulu Rare Earths Limited by the Mining and Minerals Regulatory Authority (MMRA) in accordance with the Malawi Mines and Minerals Act 2023.

Strategic Capital Raising

The Company has received commitments from institutional and sophisticated investors to raise approximately \$3M for the Company's proposed activities. It should be noted that the Company obtained approval at its recent extraordinary general meeting to undertake this placement of shares. A maximum 200M new shares are to be issued at a price of \$0.015 per share under the placement.

The intended use of the funds to be raised will be for the following activities:

- Fund the initial payment to TSK in accordance with the Proposed Acquisition of the Tundulu project;
- Provide funding for the initial exploration and drilling that is planned at Tundulu after completion of the Proposed Acquisition has occurred;
- Provide funding for proposed exploration activities at the Company's other projects in Tanzania and Tasmania;
- Pay for the costs of the new raising; and
- Working capital funding.

The Lead Manager to the proposed capital raising will be GBA Capital Pty Ltd and upon successful completion of the raising, they will receive a fee comprising the following:

- 40M AKNO Options, exercisable at \$0.006 on or before 31 December 2026 (to be issued under the Company's existing capacity under ASX Listing Rule 7.1);
- 6% cash fee calculated by reference to the amount of funds raised.

AuKing's Diversified Exploration Portfolio

The proposed Tundulu acquisition is consistent with AuKing's strategic diversification into high quality exploration projects that are focused on critical and other important minerals, now comprising the following:

- Koongie Park copper-zinc-silver project in Western Australia (joint venture with Cobalt Blue Holdings Ltd);
- Mkuju uranium project in southern Tanzania; and
- Big Wilson tin-tungsten project in north-western Tasmania.

AuKing intends to progress an aggressive approach towards the commencement of exploration activities at each of its project holdings, with results expected to provide ongoing market updates over time.

ASX Disclosure regarding Historical Exploration Results

This ASX release contains information derived from public disclosures of former owners and explorers of the Tundulu project area. In accordance with ASX disclosure requirements the following additional matters need to be noted:

- The historical exploration results reported in this release were made by companies other than AuKing, including Tusker Minerals Ltd (TSK), which is listed on the ASX;
- Copies of the historical exploration results are available as publicly available reports including:
 - *Report on the Cooperative Mineral Exploration in the Chilwa Alkaline Area, Republic of Malawi (Phase II). Report by Japan International Cooperation Agency (JICA) March 1988.*
 - *Update Report on the Tundulu Phosphate and Rare Earth Project. Report compiled by A.W. Kruger for Mota Engil, April 2016.*
- It is not known if these reports were published on a stock exchange platform. In addition, the historical exploration results from these reports can be obtained from ASX filings of TSK, particularly ASX release dated 27 May 2024;
- The historical exploration results relating to the JICA and Mota Engil-Optichem drilling programs are not believed to conform to the requirements of the JORC Code 2012;
- AuKing's Competent Person believes that, due to these historical exploration results relating to early-stage activities and being confirmed by competent technical persons from the respective companies, it is reasonable to rely on these results in the manner presented in this release;
- AuKing intends (from now on) to report its own exploration results after the conduct of planned activities in accordance with the JORC Code 2012, utilising the historical exploration results as a general background rather than the basis for future reporting;
- Details of the proposed future exploration activities that needs to be completed before exploration results can be reported in accordance with the JORC Code 2012 comprise mostly AuKing's initial drilling program, intended to commence as soon as possible after completion of the Proposed Transaction – proposed for late May, subject to drilling rig availability;
- Funding of the exploration activities will be from the \$3M Strategic Capital Raising outlined above;
- A statement by Ian Hodkinson, Competent Person is set out below;
- A cautionary statement in relation to the historical exploration results included in this release is set out above; and

- AuKing has no other reason to suspect that the historical exploration results as reported in this release are misleading.

Previous Disclosures Relating to Tundulu Metallurgical Results

On 17 October 2024, DY6 Metals Ltd (now Tusker Minerals Limited) announced preliminary metallurgical results in accordance with the 2012 JORC Code as follows:

“ A total of 63 metallurgical samples were collected from 37 sample locations along high-grade historic trench (TUTR10) at Tundulu. Sampling results returned up to a high of 3.35% TREO and 27.5% P₂O₅ (average of 0.85% TREO and 8.26% P₂O₅) over the sampled 83m length of trench TUTR10. The average HREO component of the TREO basket was 13%, with high-value heavy rare earth elements Dy & Tb contributing 2.5%. Undetectable to very low levels of deleterious elements including mercury, lead and cadmium in the P-rich rocks confirms the exceptional grade quality of the phosphate at Tundulu.

The sampling is representative of the mineralised Bastnaesite and Apatite carbonatite rock types exposed within the trench. Select samples are being collected to form a 150kg composite to be sent to for metallurgical analysis.

5 bioavailability composite samples were also taken across various historical trenches at Tundulu, targeting phosphate rich rocks. ‘Bioavailability’ is used for analysis on phosphorous rock sources to determine the solubility of phosphate in soils. This analysis is useful in determining whether a particular phosphate rock type is suitable for direct fertiliser applications where the phosphate would be applied directly to the soil for uptake.

The analysis has been undertaken at Nagrom metallurgical and analytical laboratory in Kelmscott, Western Australia under standard atmospheric conditions using 2% citric acid. The majority of samples showed excellent phosphorus (P) solubility of over 40%, with one returning solubility of 81%. The exceptional quality of the phosphate-rich rocks at Tundulu is manifested by their undetectable to very low levels of deleterious elements including mercury, lead and cadmium.

The metallurgical test work will aim to evaluate historical studies undertaken at Tundulu and assess the findings from a 2017 metallurgical report, completed by the previous operators of the licence. The test work will initially focus on validating the beneficiation results achieved by the previous laboratory.

Conducting test work at this early stage enables the Company to ascertain the preliminary viability of producing two product streams: namely a REE commercially saleable concentrate and a mixed phosphate concentrate containing rare earths.”

AuKing has carefully reviewed this material and, in conjunction with the Competent Person, formed the view that the samples taken for this work were too limited and not representative of the overall Tundulu deposit – being samples taken from one trench (TUTR10) and from near surface. It is AuKing’s intention to carry out metallurgical testwork on samples taken from the proposed

drilling program at Tundulu, across a range of holes and at varying depths across the holes themselves. Until such time as that testwork is conducted, AuKing does not propose to report metallurgical testwork in relation to the Tundulu project area.

Approved by the Board of AuKing Mining Limited.

For more information:

Paul Williams

Managing Director

M +61 419 762 487

E p.williams@aukingmining.com

Kristin Rowe

NWR Communications

M +61 404 88 98 96

E kristin@nwrcommunications.com.au

Abbreviations

- TREO = Total Rare Earth Oxides – La₂O₃, CeO₂, Pr₆O₁₁, Nd₂O₃, Sm₂O₃, Eu₂O₃, Gd₂O₃, Tb₄O₇, Dy₂O₃, Ho₂O₃, Er₂O₃, Tm₂O₃, Yb₂O₃, Lu₂O₃, Y₂O₃ (Pm₂O₃ excluded by tradition)
- HREO = Heavy Rare Earth Oxides – Tb₄O₇, Dy₂O₃, Ho₂O₃, Er₂O₃, Tm₂O₃, Yb₂O₃, Lu₂O₃, Y₂O₃
- MREE = Nd, Pr, Dy, Tb
- P = Phosphorus
- NDPR% = (Nd + Pr)/TREO
- P₂O₅ = Phosphorus pentoxide
- LIDAR = Light Detection and Ranging - a remote sensing technology that uses laser light pulses to measure distances and create highly detailed 3D maps or models of the Earth's surface, objects, or environments.

Competent Persons' Statement

The information in this report that relates to historical exploration results at the Tundulu Rare Earths Project is based on information reviewed by Mr Ian Hodkinson who is a member of the Australian Institute of Geoscientists. Mr Hodkinson is a consultant to AuKing Mining Limited and has sufficient experience which is relevant to the style of mineralisation and type of deposit under consideration and to the activity which they are undertaking to qualify as a Competent Person as defined in the 2012 Edition of the 'Australasian Code for Reporting of Exploration Results, Mineral Resources and Ore Reserves.' Mr Hodkinson consents to the inclusion in the report of the matters based on his information in the form and context in which it appears.

APPENDIX A - Historical drill collar locations

Hole ID	Easting	Northing	Elev	Azimuth	Dip	Depth
JMT01	802145	8280662	700	0	-90	50.3
JMT02	802287	8280465	695	0	-90	50.3
JMT03	801867	8280683	722	0	-90	50.3
JMT04	802143	8280463	754	0	-90	50.3
JMT05	802118	8280263	806	0	-90	50.3
JMT06	801675	8280828	684	0	-90	50.4
JMT07	801327	8280130	744	0	-90	50.2
JMT08	801136	8280047	858	0	-90	50.2
JMT09	801837	8280071	786	0	-90	50.1
JMT10	801990	8280071	833	0	-90	50.1
JMT11	801985	8280268	835	0	-90	50.2
JMT12	801990	8280463	791	0	-90	50.2
JMT13	801839	8280454	740	0	-90	50.3
JMT14	801320	8280273	715	0	-90	50.2
JMT15	801216	8280153	801	0	-90	50.2
JMT16	801265	8280032	805	0	-90	50.1
JMT17	801081	8279899	769	0	-90	50.1
JMT18	801230	8279941	781	0	-90	50.1
JMT19	801337	8279974	731	0	-90	50.1
JMT20	801132	8280342	721	0	-90	50.2
JMT21	801260	8280284	724	0	-90	50.1
JMT22	801334	8280212	727	0	-90	50.2
JMT23	801267	8280111	787	0	-90	50.2
JMT24	801330	8280044	752	0	-90	50.1
JMT25	801332	8280096	747	0	-90	50.3
JMT26	801329	8280166	739	0	-90	50.2
JMT27	801280	8280214	742	0	-90	50.2
TU001	801095.8	8280353	699.29	0	-55	151
TU001A	801094.4	8280347	699.68	180	-61.5	61
TU002	801161.6	8280390	690.11	190	-52.2	100
TU005	801218.5	8280386	691.48	195	-61.1	120
TU007	801260.4	8280352	698.79	200	-65.7	107
TU008	801292.7	8280383	689.86	200	-64	121
TU010	801293.2	8280328	702.07	220	-59.4	100
TU011	801322.5	8280345	695.8	220	-65.7	148
TU013	801347.3	8280289	704.93	240	-67.9	120
TU014	801378.8	8280301	695.65	220	-60.9	150
TU015	801306.7	8280232	740.33	225	-55	60
TU016	801367.6	8280257	710.01	236.9	-58.4	101.42
TU018	801392	8280239	707.51	240	-54.8	150
TU020	801373.8	8280209	720.55	270	-60.8	91

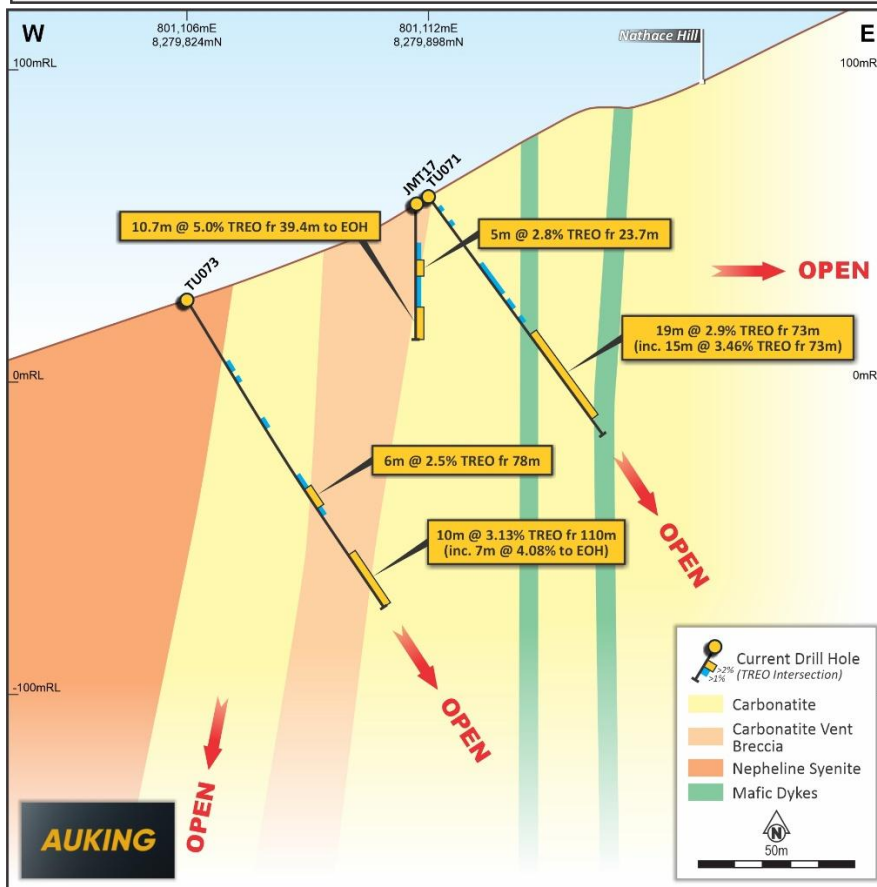
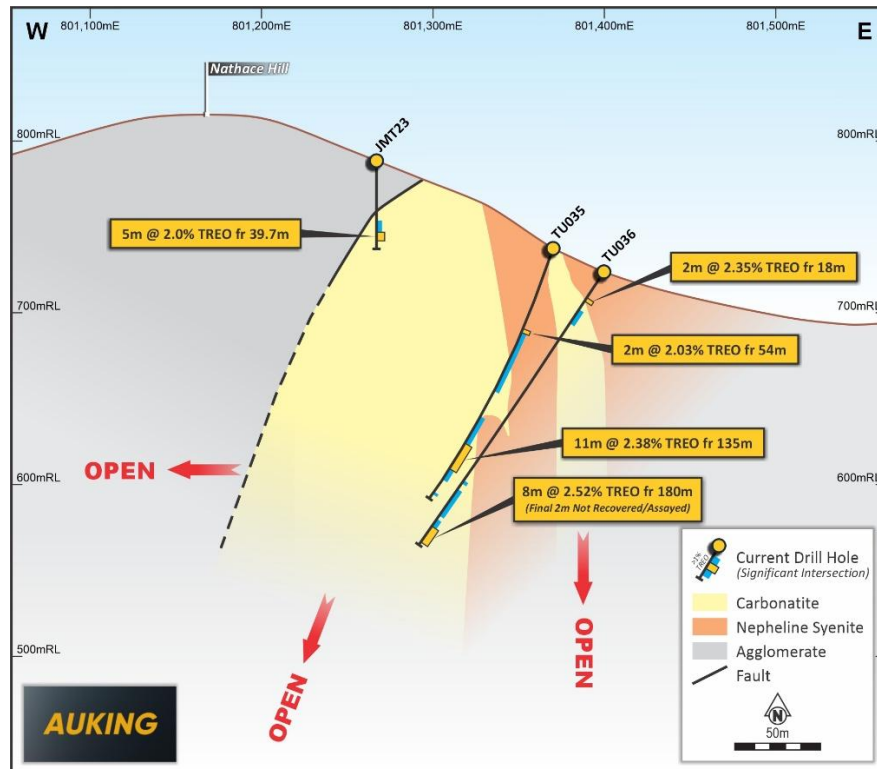
For personal use only

Hole ID	Easting	Northing	Elev	Azimuth	Dip	Depth
TU024	801233.4	8280255	737.91	40	-65.6	150
TU025	801286.5	8280238	741.17	42	-72.7	153
TU026	801279.3	8280197	759.27	70	-71.6	140
TU030	801363.6	8280181	730.02	260	-61.3	101
TU031	801414.4	8280177	712.54	260	-56.9	200.7
TU033	801368.2	8280151	733.75	267	-65.3	150
TU034	801314.6	8280108	768.72	0	-85.3	140
TU035	801368.8	8280115	736.06	270	-72.5	163
TU036	801398.2	8280122	723.27	270	-56.3	190
TU040	801393.3	8280078	726.94	280	-55	221.42
TU042	801362.3	8280085	738.7	295	-70.5	130
TU043	801385.8	8280052	727.97	290	-61.2	150
TU044	801426.6	8280045	716.65	290	-74.3	150
TU046	801319.2	8280005	754.48	290	-63	80
TU047	801351.3	8280031	741.82	290	-66.6	140
TU048	801343.4	8279993	739.96	290	-61.3	100
TU050	801306.6	8279969	754.08	290	-61.8	150
TU052	801366.1	8279933	729.17	305	-68.6	151
TU054	801282.4	8279941	758.65	317.5	-60.1	131.65
TU055	801297	8279912	747.54	320	-55.5	102
TU058	801272.5	8279887	751.85	340	-70.8	100
TU063	801241	8279855	754.72	350	-53.4	102
TU066	801156.9	8279876	762.43	355	-57.9	110
TU068	801170.3	8279820	748.52	355	-68.8	175
TU071	801111.8	8279898	768.86	15	-53.6	100
TU073	801106.4	8279824	738.46	0	-60.2	120
TU078	801042.2	8279823	732.29	20	-59.3	179.32
TU083	800983.1	8279843	728.44	10	-62.8	120
TU087	800939.8	8279884	730.37	50	-66.7	151
TU092	800867.3	8279929	719.7	180	-55	81
TU092A	800869.7	8279929	719.73	40	-60.2	120
TU094	800848.2	8280003	713.66	61	-57.5	61
TU096	800763.8	8280035	700.78	90	-55	120
TU098	800761.4	8280099	696.93	105	-61	100
TU105A	801466	8280385	682.58	45	-55	120
TU105B	801461.1	8280372	682.56	225	-66.4	163
TU106	800881	8280258	699.23	290	-62.5	120
TU107	800860.4	8280205	699.77	115	-55	120
TU107A	800854.7	8280206	699.47	310	-58.4	120
TU109	800788.5	8280151	695.77	310	-58.9	130
TU110	801310.5	8280151	767.14	0	-87	120

APPENDIX B – Historical Drilling Results
(a) Drillhole results from JICA Report 1988

Hole ID	From m	To m	Width	La (ppm)	Ce (ppm)	Nd (ppm)	Sm (ppm)	Eu (ppm)	Tb (ppm)	Nb (ppm)	Sr (ppm)	Y (ppm)	P (ppm)	TREO (ppm)	TREO (%)
JMT-01	No significant intersection														
JMT-02	16.1	22.1	6	853	1732	607	78.7	18.2	23.4	513	5949	107	37183	4108	
and	42.5	45.5	3	973	1819	652	79	20.2	5.1	420	8431	101	32087	4385	
JMT-03	32.6	34.7	2.1	550	1173	382	60.5	11.5	66.2	753	5205	64	30437	2772	
JMT-04	No significant intersection														
JMT-05	30.4	31.3	0.9	2406	4508	1436	208.5	35.3	103.3	459	735	99	5285	10560	
and	46	47.7	1.7	4485	7988	2260	334.9	57.4	9.2	470	912	251	9744	18490	1.85%
JMT-06	No significant intersection														
JMT-07	2	3	1	2663	5802	1307	346.2	111.1	60.4	2048	4541	1478	131976	14249	1.42%
and	3.4	17.8	14.4	2779	4952	891	209.9	60	29.7	1442	10936	776	72931	11717	
including	3.4	9	5.6	2932	6366	1322	334.2	100.9	58	2851	7244	1318	131709	15043	1.50%
and	14.2	22.4	8.2	6434	8884	1010	200.5	38	12.6	1400	31871	276	17947	20276	2.03%
JMT-08	No significant intersection														
JMT-09	1.3	4.3	3	362	734	263	46.4	13.1	<0.1	465	1006	66	51913	1786	
JMT-10	16.8	23.8	7	2559	6353	2714	411.1	67.6	79.8	172	664	114	3954	14759	1.48%
and	27.9	29.8	1.9	2539	6260	2064	273.4	45.6	2.9	63	635	61	170	13523	1.35%
JMT-11	No significant intersection														
JMT-12	3.2	24	20.8	800	1532	579	78.7	18	15.2	1176	18383	90	29219	3739	
and	42	50.2	8.2	715	1356	508	74.4	16.6	11.8	2149	14863	90	33591	3330	
JMT-13	No significant intersection														
JMT-14	0	17.3	17.3	3441	5590	1273	264.6	68.2	23	2261	19984	416	22724	13719	1.37%
including	10.4	14	3.6	1474	2877	1061	226.9	72.5	35.4	5354	5948	663	41912	7729	
and	21.3	35.3	14	2433	3804	1433	237.3	61.1	18.6	2391	9161	363	18916	11028	
including	21.3	25.3	4	2065	4297	1390	273.1	86.1	40	4603	20012	592	36120	10534	
and	39.7	43.6	3.9	20623	23292	3442	461	50.1	<0.1	4360	55515	80	2462	57501	5.75%
JMT-15	0	3.1	3.1	3666	5385	1152	152.3	20.7	7.8	297	30750	47	146	12526	
and	30.6	34	3.4	5711	8922	1972	290.9	43.3	<0.1	182	8965	72	465	20434	2.04%
and	37.3	41.4	4.1	3053	4508	965	138.5	21.2	1.5	244	8834	90	2836	10543	
JMT-16	21.2	27.8	6.6	3990	5959	1266	195.1	27.3	<0.1	280	31891	58	1592	13804	1.38%
and	39.5	48.1	8.6	3663	4835	991	146.7	23	11.8	467	14011	70	1585	11702	
JMT-17	2.9	5.2	2.3	1667	2258	665	170.1	50.8	35.5	447	2323	537	28909	6483	
and	17.7	29	11.3	7112	9251	1826	271.9	41.5	5.7	1500	34396	49	927	22264	2.23%
and	29.6	35.2	5.6	5503	8193	1758	261.4	41	12	2344	25270	43	551	18986	1.90%
and	36.2	50.1	13.9	13642	17316	2804	419.2	58.3	2.1	1880	50843	39	178	41141	4.11%
JMT-18	48.4	50.1	1.7	7900	9198	2838	436.3	96.7	90.3	848	11623	810	46709	25622	2.56%
JMT-19	1.3	4.8	3.5	879	1630	581	140.9	47.1	49.5	82	4460	1510	122165	5903	
and	12.4	14.6	2.2	708	1445	591	196	80.4	51.2	121	4457	1473	105549	5544	
and	17.7	24.7	7	491	854	266	59.2	16.2	25.6	124	2411	249	37067	2369	
JMT-20	1.6	4.6	3	1580	2602	802	198.5	75.2	20.2	390	3250	743	61020	7268	
and	26.2	28.4	2.2	2832	4821	1388	235.5	43.3	5.3	194	45964	141	6907	11369	
JMT-21	0	4.1	4.1	1836	3197	975	192.6	54.2	9.8	461	7282	582	48055	8253	
and	33.7	42.2	8.5	1785	2964	899	237	86.9	44.8	1384	7113	784	42991	8205	
including	38	42.2	4.2	2121	3532	1195	342.5	135.3	89.8	1930	4202	1147	61602	10337	
JMT-22	8.7	49.8	41.1	12981	14988	2272	315.5	35	5	617	37510	76	2878	36791	3.68%
JMT-23	39.7	44.7	5	5992	8534	1750	254.6	34.7	1	410	22377	103	2360	20004	2%
JMT-24	1	4.9	3.9	3833	5226	280	238.5	59.9	22.9	746	5920	788	61679	13780	1.38%
and	8.2	12.9	4.7	4860	6891	1384	258.4	54	<0.1	1834	3372	640	43271	16952	1.70%

(b) Cross section diagrams representing JICA drillholes (JMT-) from 1987 program
 (Refer to commentary below in JORC Table)



For personal use only

**(c) Significant historical intersections from 2014 Mota-Engil/ Optichem drilling campaign
at TREO>0.5%**

Hole ID	From	To	Width	Th ppm	U ppm	P ₂ O ₅ %	TREO (PPM) >0.5%	TREO %	Nd ppm	Pr ppm	Nd ₂ O ₃	Pr ₂ O ₃	Nd+Pr Total	NDPR%
TU001A	14.0	20.0	6.0	89.6	4.93	0.7	9350.00		1002	725.3	1168.73	876.31	1727.3	18.47
TU002	39	45	6.0	54.5	16.03	2.2	6265.93		760.1	228.7	886.58	276.32	988.8	15.78
TU002	51	73	22	52.08	30.07	0.6	5181.57		574.9	167.4	670.56	202.25	742.3	14.33
TU005	17	22	5	63.16	12.67	1.7	5487.76		674.4	212.4	786.62	256.62	886.8	16.16
TU005	26	31	5	57.54	15.91	0.4	8141.30		740.6	268	863.84	323.80	1008.6	12.39
TU007	35	63	28	88.05	5.67	0.17	9087.39		1037.6	335.8	1210.26	405.71	1373.4	15.11
TU007	71	77	6	160.06	38.53	1.53	5376.71		1358.7	430.7	1584.79	520.37	1789.4	33.28
TU008	0	5	5	67.48	9.85	1.38	6260.64		767.2	255.2	894.86	308.33	1022.4	16.33
TU008	43	75	32	93.41	8.75	1.51	15430.10	1.54	1713.6	644.9	1998.74	779.17	2358.5	15.29
TU008	107	112	5	39.48	14.92	5.95	2038.79		361.4	110.4	421.54	133.39	471.8	23.14
TU010	9	28	19	84.74	10.31	4.11	10418.40	1.0	1165	383.5	1358.86	463.34	1548.5	14.86
TU010	14	22	8	118.1	9.59	7.60	12247.34	1.22	1311.2	439.2	1529.38	530.64	1750.4	14.29
TU010	35	40	5	86.26	79.08	5.30	5457.49		60.4	176.8	70.45	213.61	237.2	4.35
TU010	49	66	17	76.76	6.25	0.67	10070.23	1.00	905.6	307.3	1056.29	371.28	1212.9	12.04
TU010	83	89	6	115.92	11.23	0.53	15313.31	1.53	1411.3	465.7	1646.14	562.66	1877	12.26
TU011	0	53	53	98.48	4.21	1.14	10231.20	1.02	914.4	418.3	1066.56	505.39	1332.7	13.03
TU011	88	93	5	94.52	10.56	4.38	6125.54		574.4	159.3	669.98	192.47	733.7	11.98
TU011	110	123	13	45.11	8.95	1.62	5657.31		501.7	165.1	585.18	199.47	666.8	11.79
TU013	0	10	10	148.16	9.94	3.24	15753.53	1.57	2132.6	645.7	2487.46	780.13	2778.3	17.64
TU013	18	52	34	122.46	5.32	0.52	16426.78	1.64	1601.7	574.3	1868.22	693.87	2176	13.25
TU014	0	30	30	124.99	27.95	0.35	40324.81	4.03	2537.4	1165.5	2959.62	1408.16	3702.9	9.18
TU014	36	46	10	102.00	49.72	0.66	7495.15		657.2	246.8	766.56	298.18	904	12.06
TU014	55	61	6	62.50	20.48	1.16	7652.73		811.7	281.7	946.77	340.35	1093.4	14.29
TU014	138	150	12	119.47	29.44	4.2	7551.25		867.8	238.3	1012.20	287.91	1106.1	14.65
TU015	54	60	6	153.04	9.09	2.34	9057.37		909.2	292	1060.49	352.79	1201.2	13.26
TU016	7.65	19.15	11.5	84.55	8.26	1.86	15421.93	1.54	1143.3	459.2	1333.55	554.81	1602.5	10.39
TU016	27.64	45.77	18.13	135.70	5.15	0.16	19416.88	1.94	1447.7	611.4	1688.60	738.69	2059.1	10.60
TU016	51.48	69.66	18.18	93.52	9.49	1.04	7386.48		752.2	263.4	877.37	318.24	1015.6	13.75
TU018	20	26	6	96.57	14.05	0.14	17180.16	1.71	1270.3	525	1481.68	634.31	1795.3	10.45
TU018	105	150	45	119.81	41.71	5.26	10711.91	1.07	1351.1	407.9	1575.92	492.82	1759	16.42
TU018	107	114	7	142.03	108.73	6.60	11390.58	1.14	1470.8	423.1	1715.54	511.19	1893.9	16.63
TU018	123	128	5	114.3	27.80	6.00	11555.18	1.16	1494	445	1742.60	537.65	1939	16.78
TU018	134	150	16	107.65	21.37	7.80	12452.61	1.25	1559.3	481.7	1818.77	581.99	2041	16.39
TU020	10	52	42	94.99	5.12	0.62	15373.60	1.54	1278.3	569.7	1491.01	688.31	1848	12.02
TU020	58	90	32	87.58	23.46	4.28	6355.21		806.7	242.4	940.93	292.87	1049.1	16.51
TU020	73	82	9	98.16	45.90	10.01	8030.48		1026.3	295.9	1197.08	357.51	1322.2	16.46
TU024	0	7	7	128.57	10.91	2.23	5135.69		513.8	165.3	599.30	199.72	679.1	13.22
TU024	26	45	19	127.06	10.8	1.47	9334.37		798.3	290.4	931.14	350.86	1088.7	11.66
TU024	51	57	6	141.37	49.98	7.35	4953.11		588.8	164.2	686.78	198.39	753	15.20
TU025	22	107	85	84.78	7.79	2.03	10394.21	1.04	1065.2	325.1	1242.45	392.79	1390.3	13.38
TU025	28	47	19	134.14	15.41	7.42	11637.32	1.16	1404.7	415.5	1638.44	502.01	1820.2	15.64
TU026	0	13	13	130.82	8.59	0.57	7966.18		755.2	305	880.87	368.50	1060.2	13.31
TU026	18	23	5	178.4	10.11	0.40	13951.71	1.40	1338.8	538	1561.58	650.01	1876.8	13.45
TU026	46	137	91	99.89	16.79	7.62	10907.82	1.09	1301.3	379.5	1517.84	458.51	1680.8	15.41
TU026	52	57	5	255.6	30.13	8.50	11889.06	1.19	1303.8	384.2	1520.75	464.19	1688	14.20
TU026	63	93	30	136.31	18.25	10.40	13116.40	1.31	1681.8	449.5	1961.65	543.09	2131.3	16.25
TU026	69	81	12	151.99	22.58	15.40	14271.88	1.43	1776.1	475.2	2071.64	574.14	2251.3	15.77
TU026	108	137	29	57.75	17.01	9.00	9392.83		1050.6	331.7	1225.42	400.76	1382.3	14.72
TU030	0	101	101	102.34	18.46	3.58	10187.45	1.02	1055.5	324.8	1231.14	392.42	1380.3	13.55
TU030	10	18	8	157	13.33	9.42	11532.46	1.15	1595.2	451	1860.64	544.90	2046.2	17.74

For personal use only

Hole ID	From	To	Width	Th ppm	U ppm	P ₂ O ₅ %	TREO (PPM) >0.5%	TREO %	Nd ppm	Pr ppm	Nd ₂ O ₃	Pr ₂ O ₃	Nd+Pr Total	NDPR%
TU030	29	62	33	110	38.63	6.88	6301.83		882.6	242.9	1029.46	293.47	1125.5	17.86
TU031	0	15	15	78.88	7.27	1.34	6260.11		558.2	221.5	651.08	267.62	779.7	12.46
TU031	45.1	62.8	17.7	91.31	6.99	1.33	8687.88		699.3	313.1	815.66	378.29	1012.4	11.65
TU031	80	87.96	7.96	40.22	8.83	5.97	2653.14		304.1	137.9	354.70	166.61	442	16.66
TU031	175.59	200.7	25.11	82.95	23.22	8.09	8931.51		1159.7	352.6	1352.67	426.01	1512.3	16.93
TU031	175.59	190.48	14.89	94.39	28.39	9.61	9924.88		1157.2	334.1	1349.76	403.66	1491.3	15.03
TU031	195.04	200.7	5.66	67.05	17.78	8.25	10139.62	1.01	1353.8	384.1	1579.07	464.07	1737.9	17.14
TU033	3	32	29	127.49	11.02	1.31	19865.28	1.99	1626.5	653.1	1897.15	789.08	2279.6	11.48
TU033	67	108	41	129.8	17.65	7.03	16101.93	1.61	1731	627.2	2019.04	757.78	2358.2	14.65
TU033	67	105	38	131.23	18.72	7.50	15779.05	1.58	1735.4	605.5	2024.17	731.57	2340.9	14.84
TU033	116	123	7	60.25	8.14	0.31	9762.40		856	427.8	998.44	516.87	1283.8	13.15
TU033	139	148	9	74.91	3.36	0.24	8590.41		780.5	364.9	910.38	440.87	1145.4	13.33
TU034	0	31	31	98.17	8.66	7.47	8815.97		940.1	256.4	1096.53	309.78	1196.5	13.57
TU034	0	9	9	111.4	9.75	7.30	8603.91		886.1	259.9	1033.55	314.01	1146	13.32
TU034	19	31	12	114.4	8.96	13.00	11954.78	1.19	1268.9	309.2	1480.04	373.58	1578.1	13.20
TU034	20	25	5	127	9.78	16.10	14280.90	1.43	1502.6	432.2	1752.63	522.18	1934.8	13.55
TU034	36	98	62	211.08	26.45	15.60	11861.78	1.19	1146.3	388.2	1337.04	469.02	1534.5	12.94
TU034	38	98	60	216.44	27.35	16.20	12089.30	1.21	1171.3	395.7	1366.20	478.08	1567	12.96
TU034	46	98	52	222.36	29.18	17.50	12520.49	1.25	1228.5	412.7	1432.92	498.62	1641.2	13.11
TU035	53	162	109	96.04	22.83	3.68	10595.89	1.06	1200.7	384.8	1400.50	464.92	1585.5	14.96
TU035	53	80	27	133.36	50.93	10.70	9767.49		1169	338.3	1363.52	408.73	1507.3	15.43
TU035	125	131	6	56.33	21.6	5.00	11386.71	1.14	1567.8	466	1828.68	563.02	2033.8	17.86
TU036	26	36	10	135.41	14.25	2.93	10698.24	1.07	1021.8	365.3	1191.83	441.36	1387.1	12.97
TU036	39	47	8	77.01	17.55	6.00	3604.04		453.2	129	528.61	155.86	582.2	16.15
TU036	136	188	52	98.07	11.76	1.31	11332.72	1.13	1270.7	423.2	1482.14	511.31	1693.9	14.95
TU040	45.25	50.26	5.01	42.47	11.04	6.19	2870.74		397.8	70.2	463.99	84.82	468	16.30
TU040	101.84	106.98	5.14	136.43	26.55	3.36	5521.24		642.4	221.2	749.30	267.25	863.6	15.64
TU040	113.78	146.9	33.12	147.71	27.03	3.71	8822.49		1121.3	389.7	1307.88	470.84	1511	17.13
TU040	116.54	121.89	5.35	221.96	42.01	7.16	9111.11		946.5	309.1	1104.00	373.45	1255.6	13.78
TU040	156.88	179.8	22.92	152.05	24.75	7.06	12912.61	1.29	1371.9	461.3	1600.18	557.34	1833.2	14.20
TU040	156.88	174.64	17.76	164.28	28.93	9.27	14434.58	1.44	1770.6	595.4	2065.23	719.36	2366	16.39
TU040	184.31	195.99	11.68	103.99	10.84	1.53	9369.23		949.5	325.9	1107.50	393.75	1275.4	13.61
TU040	203.4	219.29	15.89	92.98	8.48	0.93	7287.22		672	233.9	783.82	282.60	905.9	12.43
TU042	30	130	100	124.48	34.46	12.57	10921.91	1.09	1364.4	384.4	1591.44	464.43	1748.8	16.01
TU042	30	100	70	150.65	43.66	16.70	10824.45	1.08	1290	364.6	1504.66	440.51	1654.6	15.29
TU042	31	72	41	191.26	53.52	18.90	10518.24	1.05	1176.5	325.2	1372.27	392.91	1501.7	14.28
TU042	79	95	16	90.83	27.79	17.00	11641.59	1.16	1478.6	427.6	1724.64	516.63	1906.2	16.37
TU043	37	46	9	26.01	29.95	7.20	2917.19		298.8	81.7	348.52	98.71	380.5	13.04
TU043	46	56	10	43.41	15.01	0.91	5691.69		511.1	155.1	596.15	187.39	666.2	11.70
TU043	72	146	74	138.83	29.8	4.42	15553.00	1.55	1514.2	495.9	1766.16	599.15	2010.1	12.92
TU043	84	95	11	189.16	20.86	6.00	25573.95	2.56	1843	698.8	2149.68	844.29	2541.8	9.94
TU043	100	108	8	188.13	37.33	7.50	10962.02	1.09	1822.5	600.3	2125.76	725.28	2422.8	22.10
TU043	113	125	12	94.38	37.47	5.50	11036.07	1.10	1436.6	423.2	1675.65	511.31	1859.8	16.85
TU043	136	145	9	128.43	34.11	6.60	13295.09	1.33	1852.4	531.4	2160.64	642.04	2383.8	17.93
TU046	9	78	69	140.93	14.31	7.97	13720.72	1.37	1247.3	447.2	1454.85	540.31	1694.5	12.35
TU046	14	19	5	107.7	12.31	9.41	12589.67	1.26	1633.8	536	1905.66	647.60	2169.8	17.23
TU046	23	78	55	154.81	18.43	9.01	12689.26	1.27	1189	428.4	1386.85	517.59	1617.4	12.75
TU047	47	79	32	124.16	15.82	3.21	13844.34	1.38	1205	427.6	1405.51	516.63	1632.6	11.79
TU047	57	62	5	171.74	24.98	5.60	17200.27	1.72	1365.4	525	1592.60	634.31	1890.4	10.99
TU047	92	98	6	75.33	11.68	2.46	6321.18		706.7	226.8	824.29	274.02	933.5	14.77
TU047	124	140	16	134.29	20.45	9.21	10667.12	1.07	1319.7	384	1539.30	463.95	1703.7	15.97
TU047	124	134	10	159.08	29.22	14.60	12720.52	1.27	1587	445	1851.08	537.65	2032	15.97
TU048	9	24	15	60.55	11.85	8.40	4537.16		483	144.6	563.37	174.71	627.6	13.83

Hole ID	From	To	Width	Th ppm	U ppm	P ₂ O ₅ %	TREO (PPM) >0.5%	TREO %	Nd ppm	Pr ppm	Nd ₂ O ₃	Pr ₂ O ₃	Nd+Pr Total	NDPR%
TU048	11	16	5	91.52	14.14	12.14	5146.18		557.6	149.6	650.38	180.75	707.2	13.74
TU048	41	72	31	189.91	9.77	0.64	22750.09	2.27	1988.3	753.8	2319.15	910.74	2742.1	12.05
TU048	92	97	5	78.54	10.13	2.66	6186.40		679.2	213.4	792.22	257.83	892.6	14.43
TU050	0	97	97	164.32	29.19	14.42	13475.69	1.35	1375.5	439.8	1604.38	531.37	1815.3	13.47
TU050	5	64	59	156.51	23.15	18.46	13068.15	1.30	1607.1	502.6	1874.52	607.24	2109.7	16.14
TU050	12	59	47	153.43	24.19	21.19	14087.66	1.40	1669.5	500.2	1947.30	604.34	2169.7	15.40
TU050	72	97	25	207.21	33.92	11.69	8771.12		1016.4	317.4	1185.53	383.48	1333.8	15.21
TU050	82	91	9	263.55	61.43	21.22	7876.92		1000.3	268	1166.75	323.80	1268.3	16.10
TU050	130	138	8	108.66	6.92	0.75	19557.55	1.96	1489.5	683.2	1737.35	825.44	2172.7	11.11
TU052	60	65	5	57.46	17.58	8.80	4660.27		435.4	94.5	507.85	114.17	529.9	11.37
TU054	3.36	31.48	28.12	154.91	12.61	9.04	15185.94	1.52	1501.4	515.4	1751.23	622.71	2016.8	13.28
TU054	3.36	28.92	25.56	164.99	13.35	9.83	15168.55	1.52	1654.9	532.1	1930.28	642.88	2187	14.42
TU054	21.86	28.92	7.06	215.44	17.75	18.15	13245.37	1.32	1642.4	480.9	1915.70	581.02	2123.3	16.03
TU054	39.28	119.65	80.37	140.28	15.06	5.58	9628.20		909.9	306.4	1061.31	370.19	1216.3	12.63
TU054	52.76	59.09	6.33	224.71	20.39	11.91	25732.03	2.57	2118.4	735.7	2470.90	888.87	2854.1	11.09
TU054	73.47	78.99	5.52	184.34	12.09	6.21	11731.42	1.17	984.9	351.6	1148.79	424.80	1336.5	11.39
TU054	93.73	118.42	24.69	204.45	24.59	9.53	11636.94	1.16	1070.2	338.3	1248.28	408.73	1408.5	12.10
TU055	18	25	7	64.1	12.51	16.90	5137.49		321.1	86.3	374.53	104.27	407.4	7.93
TU055	18	26	8	60.76	11.88	15.40	4839.87		307.4	82.9	358.55	100.16	390.3	8.06
TU055	85	101	16	183.18	15.03	8.35	9737.71		1085.5	333.9	1266.13	403.42	1419.4	14.58
TU055	85	95	10	241.5	18.86	13.10	10394.66	1.04	1260.9	363.2	1470.71	438.82	1624.1	15.62
TU058	28	33	5	122.18	29.32	2.24	9187.42		844.4	284.5	984.91	343.73	1128.9	12.29
TU063	20	28	8	125.27	18.75	18.80	7847.13		728.4	175.8	849.61	212.40	904.2	11.52
TU063	20	25	5	127.8	20.5	27.80	9524.51		832.4	202.4	970.91	244.54	1034.8	10.86
TU063	84	99	15	136.3	20.32	7.84	10701.35	1.07	1284.6	407.2	1498.36	491.98	1691.8	15.81
TU063	86	102	16	123.34	20.11	9.00	9613.38		1147.4	344.9	1338.33	416.71	1492.3	15.52
TU066	40	66	26	95.08	18.05	0.56	9313.98		864.8	290	1008.70	350.38	1154.8	12.40
TU066	74	83	9	87.15	10.39	0.96	6084.52		596.3	195.4	695.52	236.08	791.7	13.01
TU066	88	110	22	90.68	10.56	0.84	5846.80		584.8	190.7	682.11	230.40	775.5	13.26
TU068	8	16	8	304.35	37.79	3.09	6361.97		838.5	249	978.03	300.84	1087.5	17.09
TU068	43	58	15	81.16	13.35	5.59	6160.20		706.5	216.3	824.06	261.33	922.8	14.98
TU068	43	57	14	82.85	13.75	5.70	6196.07		705.7	216.3	823.13	261.33	922	14.88
TU068	71	123	52	113.51	11.19	0.98	11638.24	1.16	1006	350.2	1173.40	423.11	1356.2	11.65
TU068	156	175	19	82.94	16.61	0.56	7137.48		702.3	211.1	819.16	255.05	913.4	12.80
TU071	5	92	87	87.67	6.29	0.43	11924.12	1.19	1018.8	364.1	1188.33	439.91	1382.9	11.60
TU071	73	88	15	184.80	6.17	0.07	34615.79	3.46	2662.1	985.2	3105.07	1190.32	3647.3	10.54
TU073	24	34	10	146.4	13.29	0.69	9311.61		704.2	286	821.38	345.55	990.2	10.63
TU073	46	54	8	312.5	24.82	13.11	15594.37	1.56	1159	424.2	1351.86	512.52	1583.2	10.15
TU073	64	90	26	92.4	9.89	3.19	11926.56	1.19	962.3	347.7	1122.43	420.09	1310	10.98
TU073	68	73	5	109.92	13.4	5.40	18385.54	1.84	1339	503.2	1561.81	607.97	1842.2	10.02
TU073	77	82	5	151.62	12.95	6.40	27645.14	2.76	2115.8	795	2467.87	960.52	2910.8	10.53
TU073	110	120	10	131.83	14.95	0.83	31258.88	3.13	2292.8	877.5	2674.32	1060.20	3170.3	10.14
TU073	112	119	7	148.26	17.11	0.69	40779.98	4.08	2917.4	1135.1	3402.86	1371.43	4052.5	9.94
TU078	26.89	39.62	12.73	141.82	10.92	1.63	7181.98		707.4	261.7	825.11	316.19	969.1	13.49
TU078	53.95	179.32	125.37	77.12	9.37	2.27	8202.95		863.9	330.8	1007.65	399.67	1194.7	14.56
TU078	76.73	82.67	5.94	75.17	2.75	10.48	17912.35	1.79	2445.7	938.2	2852.66	1133.53	3383.9	18.89
TU078	88.17	102.69	14.52	113.1	10.63	7.27	11965.52	1.20	1549.8	515.8	1807.69	623.19	2065.6	17.26
TU083	6	11	5	101.70	8.28	0.75	5122.63		603	173	703.34	209.02	776	15.15
TU083	89	98	9	182.04	11.44	0.87	8919.65		785.5	286.1	916.21	345.67	1071.6	12.01
TU087	36	42	6	330.80	15.43	0.37	16698.53	1.67	1299	461.3	1515.15	557.34	1760.3	10.54
TU087	73	85	12	101.50	4.01	0.42	13156.80	1.32	1007.2	357.8	1174.80	432.29	1365	10.37
TU087	123	151	28	295.95	15.35	0.49	25807.93	2.58	1939	673.9	2261.65	814.21	2612.9	10.12
TU092	74	81	7	120.23	10.99	1.48	12247.23	1.22	951.1	338.5	1109.36	408.98	1289.6	10.53

For personal use only

Hole ID	From	To	Width	Th ppm	U ppm	P ₂ O ₅ %	TREO (PPM) >0.5%	TREO %	Nd ppm	Pr ppm	Nd ₂ O ₃	Pr ₂ O ₃	Nd+Pr Total	NDPR%
TU092A	46	52	6	175.13	12.50	4.72	6326.61		661.3	215.1	771.34	259.88	876.4	13.85
TU092A	56	61	5	95.66	4.78	0.33	9836.85		805.4	310	939.42	374.54	1115.4	11.34
TU092A	96	102	6	243.13	18.18	0.37	17481.29	1.75	1381	487	1610.80	588.39	1868	10.69
TU094	7	47	40	88.95	8.08	0.45	18239.49	1.82	1194	419.8	1392.68	507.20	1613.8	8.85
TU096	33	47	14	129.5	13.89	9.98	14883.17	1.49	1986.5	528.1	2317.05	638.05	2514.6	16.90
TU096	82	97	15	94.24	13.6	6.97	19612.89	1.96	2573.4	732	3001.61	884.40	3305.4	16.85
TU096	106	111	5	108.36	13.5	8.34	16656.50	1.67	2134.2	614.6	2489.33	742.56	2748.8	16.50
TU098	12	18	6	138.18	12.72	16.79	16453.74	1.65	2496.7	634.2	2912.15	766.24	3130.9	19.03
TU098	12	17	5	158.94	13.16	19.70	17469.06	1.75	2706	680.4	3156.28	822.06	3386.4	19.39
TU098	26	43	17	74.5	12.47	1.02	7837.48		849	270.5	990.27	326.82	1119.5	14.28
TU105A	39	51	12	76.37	43.02	6.37	3406.49		614.1	189.5	716.29	228.95	803.6	23.59
TU105A	44	56	12	97.57	34.73	4.06	6412.72		767.3	241.4	894.98	291.66	1008.7	15.73
TU105B	147	163	16	83.54	13.52	0.33	19539.62	1.95	1453.4	561.4	1695.25	678.28	2014.8	10.31
TU106	40	63	23	113.20	9.14	3.40	7411.59		768.7	226	896.61	273.05	994.7	13.42
TU106	108	114	6	121.40	17.05	0.43	8182.08		777.7	292.3	907.11	353.16	1070	13.08
TU107	18	28	10	41.45	15.07	1.50	5333.66		541.5	185.6	631.61	224.24	727.1	13.63
TU107	40	58	18	74.10	7.08	0.43	7889.95		633.5	234.5	738.91	283.32	868	11.00
TU107	73	78	5	82.66	10.09	0.27	6201.33		552.6	188.1	644.55	227.26	740.7	11.94
TU107	107	118	11	112.87	7.36	0.34	12444.46	1.24	1052.1	397.6	1227.17	480.38	1449.7	11.65
TU107A	36	48	12	117.00	8.03	3.28	8162.79		904.7	376	1055.24	454.28	1280.7	15.69
TU107A	54	120	66	74.37	6.67	0.54	6927.42		719.7	242.4	839.46	292.87	962.1	13.89
TU109	0	20	20	71.41	8.91	0.69	7913.38		829.5	266.5	967.53	321.99	1096	13.85
TU109	26	34	8	107.95	11.82	1.53	6363.53		602.5	198.9	702.76	240.31	801.4	12.59
TU109	109	115	6	76.03	7.38	0.60	6625.27		604.6	204.7	705.21	247.32	809.3	12.22
TU110	5	10	5	129.86	11.71	3.76	8329.24		643.2	201.2	750.23	243.09	844.4	10.14
TU110	14	20	6	144.33	7.47	0.80	7562.27		622.7	189.3	726.32	228.71	812	10.74
TU110	25	120	95	116.55	7.04	0.92	12130.26	1.21	1047.4	373	1221.69	450.66	1420.4	11.71

**APPENDIX C – Historical Rock Chip/Trenching Samples
(a) JICA, 1988**

Sample ID	Easting	Northing	Z calc	Area	Lith	La (ppm)	Ce (ppm)	Nd (ppm)	Sm (ppm)	Eu (ppm)	Tb (ppm)	Nb (ppm)	Sr (ppm)	Y (ppm)	P (ppm)	REO (ppm)	P ₂ O ₅ (wt%)	TREO (wt%)
7Y152	802150	8280655	700	Tundulu	CARB	620	1439	413	57.9	17.3	28.1	533	22718	93	21908	3214	5.0	0.32
7Y153	802158	8280584	715	Tundulu	CARB	730	1301	388	45.2	15.6	0.05	0.5	5470	99	842	3103	0.2	0.31
7Y154	802153	8280519	730	Tundulu	CAGL	566	1182	328	28.6	13.5	0.05	66	22578	86	4350	2656	1.0	0.27
7Y155	802141	8280472	734	Tundulu	CARB	508	1083	288	28.6	12.4	5.1	88	8821	81	4374	2418	1.0	0.24
7Y156	802267	8280516	695	Tundulu	CARB	825	1785	566	74.3	21.9	20	1337	6138	104	31760	4086	7.3	0.41
7Y157	802301	8280463	692	Tundulu	CARB	846	1734	462	53.6	18.2	0.05	96	907	98	1945	3868	0.4	0.39
7Y158	802137	8280417	772	Tundulu	CARB	734	1548	457	45.9	17.5	29.7	194	3579	87	12826	3513	2.9	0.35
7Y159	802299	8280237	700	Tundulu	FELA	557	1164	264	42.4	8.6	5.9	255	421	59	5736	2531	1.3	0.25
7Y160	802083	8280266	839	Tundulu	CAGL	0.5	1	2.5	0.05	0.05	0.05	0.5	1509	5	34	11	0.0	0.00
7Y161	802128	8280184	789	Tundulu	CARB	1505	2822	767	94.2	21.8	8.9	26	2022	277	11117	6622	2.5	0.66
7Y162	802084	8280012	788	Tundulu	CARB	2176	3960	1110	146.4	27.6	4.7	39	1122	71	382	9007	0.1	0.90
7Y163	802100	8279850	751	Tundulu	CARB	2555	5725	2024	362.8	79.7	13.5	261	370	137	327	13090	0.1	1.31
7Y164	802048	8279866	783	Tundulu	CARB	1730	3993	1676	391	97.1	29	132	1310	135	268	9658	0.1	0.97
7Y165	801987	8279866	810	Tundulu	CARB	563	1404	565	81.5	27	43.9	287	3597	166	25762	3431	5.9	0.34
7Y166	801846	8279856	805	Tundulu	CARB	376	884	321	29.6	14.7	4.1	53	1553	56	1490	2028	0.3	0.20
7Y167	801862	8279927	810	Tundulu	CAGL	107	214	2.5	6.7	3.2	0.05	123	503	26	4176	436	1.0	0.04
7Y168	801844	8280071	788	Tundulu	CARB	1100	2057	689	81.5	23.5	15.8	145	794	42	1998	4813	0.5	0.48
7Y170	801828	8280688	725	Tundulu	CARB	296	570	122	38.1	4.4	5.1	184	955	15	5128	1264	1.2	0.13
7Y171	801940	8280466	778	Tundulu	CARB	405	850	273	26.5	12.3	7.3	34	17168	71	10592	1981	2.4	0.20
7Y172	802000	8280453	798	Tundulu	CARB	673	1363	427	49.5	15.5	39	97	17912	84	22505	3188	5.2	0.32
7Y173	801991	8280277	835	Tundulu	CARB	1246	2731	1076	109.6	26	12.5	367	1103	31	414	6281	0.1	0.63
7Y174	801735	8280058	768	Tundulu	INSY	133	237	52	19.9	3.9	0.05	763	4128	21	5883	562	1.3	0.06

Sample ID	Easting	Northing	Z calc	Area	Lith	La (ppm)	Ce (ppm)	Nd (ppm)	Sm (ppm)	Eu (ppm)	Tb (ppm)	Nb (ppm)	Sr (ppm)	Y (ppm)	P (ppm)	REO (ppm)	P ₂ O ₅ wt%	TREO wt%
7Y175	801316	8280045	762	Tundulu	CAPA	1326	2398	742	148.5	54.4	77.9	485	4610	843	95748	6761	21.9	0.68
7Y176	801271	8280031	797	Tundulu	CBST	4761	6779	1349	166.9	26.6	0.05	1355	31417	39	372	15756	0.1	1.58
7Y177	801210	8280148	809	Tundulu	CBST	2716	4424	1034	130.1	24.3	7.4	0.5	17531	24	352	10042	0.1	1.00
7Y178	801113	8280112	829	Tundulu	SLVS	79	148	49	18.7	5	0.05	90	1024	49	7221	421	1.7	0.04
7Y179	800864	8280028	731	Tundulu	CAPA	3830	7865	2802	402.5	87.1	41.7	2267	7299	439	42094	18591	9.6	1.86
7Y180	801193	8280206	780	Tundulu	CBST	4382	5565	1158	127.6	24.1	7	490	23746	74	339	13602	0.1	1.36
7Y181	801264	8280279	725	Tundulu	CBST	1904	2649	617	144.3	47.5	16.2	586	10493	463	46674	7035	10.7	0.70
7Y182	801325	8280279	713	Tundulu	CBST	1834	2604	1386	187.7	52.7	7.6	19	48842	175	8524	7475	2.0	0.75
7Y183	801245	8279939	773	Tundulu	CBST	1124	1973	725	161.1	51.8	25.3	316	2570	541	34822	5550	8.0	0.55
7Y184	801170	8279959	822	Tundulu	CBST	15464	15265	2233	282.6	50.5	20.7	443	10696	141	7539	40078	1.7	4.01
7Y185	801085	8279923	797	Tundulu	CBST	3319	4362	1074	218.2	54.2	17.8	481	14923	371	15367	11310	3.5	1.13
7Y186	801173	8279850	750	Tundulu	CAPA	23	58	14	3.3	1.7	0.05	0.5	240	5	399	127	0.1	0.01
7Y187	801331	8279980	739	Tundulu	CAPA	819	1478	574	151.7	66.5	62.9	21	4638	1962	124135	6262	28.4	0.63
7Y188	802096	8280650	712	Tundulu	CARB	738	1233	429	49.3	14.4	2.8	25	3887	85	2031	3065	0.5	0.31
7Y189	802002	8280627	728	Tundulu	CARB	687	1199	419	46.3	13.3	3.7	13	3845	78	2069	2939	0.5	0.29
7Y190	801980	8280536	773	Tundulu	CARB	989	1702	589	74.9	18.9	1.9	28	3579	69	2528	4136	0.6	0.41
7Y191	801893	8280681	716	Tundulu	CARB	376	709	154	32.8	5.8	0.05	400	856	42	4487	1589	1.0	0.16
7Y192	801917	8280661	715	Tundulu	CARB	578	1058	409	43.1	13	11.7	46	22267	79	8531	2633	2.0	0.26
7Y193	802239	8280348	723	Tundulu	CARB	3972	7384	2587	373	81.8	6.2	432	1253	129	36	17442	0.0	1.74
7Y194	802200	8280304	752	Tundulu	CARB	3365	7535	3088	457	106.7	29.9	205	910	177	2218	17714	0.5	1.77
7Y195	802080	8280114	820	Tundulu	CAGL	1726	3421	1146	135.4	21.7	0.05	646	831	67	171	7829	0.0	0.78
7Y196	802397	8280454	680	Tundulu	FELA	17569	25316	6304	822.7	134.9	27.1	1586	2554	432	24516	60737	5.6	6.07
7Y197	802278	8280576	690	Tundulu	CARB	823	1290	519	56.7	15.9	0.05	9	26286	80	1175	3341	0.3	0.33
7Y198	802157	8279950	736	Tundulu	CARB	3473	7209	2518	297.4	49.3	13.5	63	535	114	1727	16425	0.4	1.64
7Y199	801923	8279913	840	Tundulu	CAGL	843	1547	628	97.4	17.8	9.6	263	518	64	1270	3847	0.3	0.38
7Y200	801763	8279746	777	Tundulu	CAGL	512	939	466	64.2	18	7	687	1307	78	3529	2500	0.8	0.25

Sample ID	Easting	Northing	Z calc	Area	Lith	La (ppm)	Ce (ppm)	Nd (ppm)	Sm (ppm)	Eu (ppm)	Tb (ppm)	Nb (ppm)	Sr (ppm)	Y (ppm)	P (ppm)	REO (ppm)	P ₂ O ₅ (wt%)	TREO (wt%)
7Y201	801916	8279767	800	Tundulu	CARB	447	970	322	36	11.9	0.05	283	10886	94	12507	2266	2.9	0.23
7Y202	802015	8279685	752	Tundulu	INSY	70	118	39	8	1.7	0.05	474	753	12	1148	299	0.3	0.03
7Y203	801688	8280620	694	Tundulu	CARB	409	762	241	20.3	9.6	6.6	23	18511	72	4307	1830	1.0	0.18
7Y204	801815	8280406	753	Tundulu	CARB	1279	2228	951	140.5	32.7	9.2	21	30071	129	6098	5720	1.4	0.57
7Y205	801708	8280287	727	Tundulu	CSIL	317	582	193	11.3	7.6	0.05	0.5	22377	78	272	1421	0.1	0.14
7Y206	801705	8280301	726	Tundulu	INSY	15	25	2.5	5.8	0.05	0.05	250	820	5	1091	64	0.3	0.01
7Y207	801732	8280236	739	Tundulu	CSIL	39	64	5	6.3	0.8	1.1	196	1910	10	992	152	0.2	0.02
7Y208	801878	8280158	793	Tundulu	CARB	790	1301	644	84.4	21.6	12.2	635	1201	105	5653	3546	1.3	0.35
7Y209	801163	8280043	856	Tundulu	EAGL	72	187	29	11	0.5	0.05	399	240	5	827	368	0.2	0.04
7Y210	801033	8279994	812	Tundulu	CARB	332	579	157	47.1	15.1	3.7	262	678	268	7340	1700	1.7	0.17
7Y211	801018	8279940	778	Tundulu	CARB	5691	6680	1209	149	17.2	1.5	1304	35733	16	2.5	16503	0.0	1.65
7Y326	801398	8280156	718	Tundulu	INSY	514	939	342	51	0.05	0.05	197	1752	88	11693	2340	2.7	0.23
7Y327	801395	8280154	720	Tundulu	INSY	2016	4354	1571	348.2	26.3	26.3	1870	4700	1210	127714	11624	29.3	1.16
7Y328	801372	8280154	726	Tundulu	INSY	817	1983	926	131.2	0.05	0.05	17	463	146	9268	4840	2.1	0.48
7Y329	801366	8280152	729	Tundulu	INSY	998	1678	627	135.6	0.05	0.05	60	2683	343	37374	4598	8.6	0.46
7Y330	801355	8280154	733	Tundulu	CAPA	1134	2150	1146	354	65.3	65.3	13	55758	1399	92582	7721	21.2	0.77
7Y335	801324	8280153	743	Tundulu	CBST	14164	16064	2253	373.5	0.05	0.05	25	45887	33	2423	39478	0.6	3.95
7Y336	801317	8280152	745	Tundulu	EAGL	166	377	70	24.3	0.05	0.05	0.5	357	5	606	774	0.1	0.08
7Y337	801314	8280152	746	Tundulu	CAPA	2963	5522	1774	514	36.7	36.7	348	4123	1383	91284	14886	20.9	1.49
7Y341	801307	8280153	748	Tundulu	CAPA	2412	5145	1786	399.8	91.6	91.6	1061	5172	1178	120817	13411	27.7	1.34
7Y346	801263	8280152	790	Tundulu	CBST	1325	1944	455	93.9	0.05	0.05	381	1964	329	35299	5027	8.1	0.50
7Y350	801218	8280163	797	Tundulu	CBST	1272	1907	564	111.1	29.8	15	276	1399	371	31816	5143	7.3	0.51
7Y356	801251	8280146	786	Tundulu	CARB	4812	8134	1812	251.5	38.9	0.05	11	2656	58	62	18156	0.0	1.82
7Y357	801327	8280030	754	Tundulu	CAPA	1643	2677	764	132.1	32.1	1.7	29	3020	335	39022	6723	8.9	0.67
7Y358	801306	8280027	768	Tundulu	CAPA	3785	7234	2104	404.6	104.7	3.8	464	4348	888	123901	17499	28.4	1.75
7Y377	801260	8280010	802	Tundulu	CBST	336	528	151	33.9	8.7	0.05	244	1090	145	12246	1452	2.8	0.15

Sample ID	Easting	Northing	Z calc	Area	Lith	La (ppm)	Ce (ppm)	Nd (ppm)	Sm (ppm)	Eu (ppm)	Tb (ppm)	Nb (ppm)	Sr (ppm)	Y (ppm)	P (ppm)	REO (ppm)	P ₂ O ₅ (wt%)	TREO (wt%)
7Y380	801274	8280037	794	Tundulu	CBST	5449	9461	1847	280.9	43.5	0.05	331	2580	66	784	20624	0.2	2.06
7Y381	801274	8280056	795	Tundulu	CBST	1775	3159	716	80.4	4.1	0.05	10	1583	5	232	6901	0.1	0.69
7Y382	801278	8280095	785	Tundulu	CBST	1973	4117	1055	130.5	16.8	0.05	79	2384	24	2951	8802	0.7	0.88
7Y383	801309	8280092	764	Tundulu	CAPA	2006	4345	1344	341.8	101.2	26.7	1292	6260	1141	109790	11249	25.2	1.12
7Y384	801314	8280105	758	Tundulu	CAPA	3400	5646	1500	306.7	99.4	14.3	665	7133	1152	111477	14621	25.5	1.46
7Y385	801314	8280120	756	Tundulu	CAPA	2345	4934	1636	378.3	118.2	70.2	6278	4551	1566	136541	13363	31.3	1.34
7Y386	801340	8280095	745	Tundulu	CAPA	22610	26527	3412	468.4	41.6	317.6	553	90645	32	822	64073	0.2	6.41
7Y387	801352	8280069	738	Tundulu	CBST	508	748	230	0.05	6.4	0.05	0.5	16585	97	5701	1913	1.3	0.19
7Y388	801339	8280082	746	Tundulu	CAPA	1648	3706	1269	278.3	88	48.9	404	4071	1204	103707	10016	23.8	1.00
7Y389	801344	8280089	744	Tundulu	CBST	8440	11560	1704	203.7	21.5	3.1	218	41626	17	334	26369	0.1	2.64
7Y390	801360	8280113	735	Tundulu	CAPA	436	681	211	0.05	4.2	0.05	10	15506	70	8341	1688	1.9	0.17

(b) DY6 (Tusker), Dec 2023/Feb 2024

Sample ID	Easting	Northing	La (ppm)	Ce (ppm)	Dy (ppm)	Eu (ppm)	Nb (ppm)	Nd (ppm)	Pr (ppm)	Sm (ppm)	Tb (ppm)	Y (ppm)	P ₂ O ₅ wt%	TREO (ppm)
PHA0006	801329	8280169	1464	1949	26.76	14.68	1298	735	248	69.2	6.17	110	2.72	5,610
PHA0007	801331	8280169	91.1	167	4.56	2.45	244	68	19.96	9	0.9	24.6	0.72	477
PHA0008	801333	8280168	1661	2355	150	47.52	595	890	284	161	27.82	622	11.96	7,753
PHA0009	801335	8280168	4143	5087	196	54.34	4037	1529	543	196	33.89	852	17.03	15,539
PHA0010	801337	8280167	1290	2013	173	54.06	658	868	258	175	31.53	735	12.29	7,057
PHA0011	801338	8280167	1325	1746	244	65.54	785	847	237	199	43.43	1009	16.34	7,299
PHA0012	801340	8280166	675	881	41.7	11	276	237	78.03	38.1	7	191	3.83	2,673
PHA0013	801342	8280166	820	1135	91.86	30.46	504	533	151	102	16.89	386	5.94	4,099
PHA0014	801344	8280165	1069	1664	162	50.07	388	752	214	160	29.62	653	10.17	6,044
PHA0015	801346	8280165	436	682	53.17	14.82	262	242	68.37	47.8	9.42	223	3.66	2,237
PHA0016	801348	8280164	690	1204	172	45.87	854	508	132	136	30.01	704	12.04	4,681
PHA0017	801350	8280164	1418	2925	235	77.96	2151	1511	416	275	41.82	1129	18.43	10,151
PHA0018	801352	8280163	1610	3119	419	111	2005	1595	440	335	73.52	1645	27.53	11,961
PHA0019	801354	8280163	1617	2450	202	55.94	2610	1098	330	183	35.22	740	11.81	8,406
PHA0021	801356	8280162	657	1225	185	43.71	196	510	135	126	31.79	702	10.71	4,655
PHA0022	801358	8280162	1528	2061	224	54.88	591	899	265	171	37.94	840	12.6	7,671
PHA0023	801360	8280161	526	976	86.92	24.25	408	372	106	73.8	16	350	4.98	3,198
PHA0024	801362	8280161	644	1171	119	29.34	542	424	123	86	21.25	435	6.55	3,871
PHA0025	801364	8280160	190	394	19.03	5.07	218	117	35.71	17.5	3.15	81.2	1.6	1,075
PHA0026	801366	8280160	232	504	98.44	23.13	361	195	50.49	57.5	17.74	368	5.62	2,029
PHA0027	801367	8280159	1815	3442	106	51.24	270	1530	460	205	22.05	410	6.01	9,891
PHA0028	801369	8280159	3268	4446	98.94	40.92	295	1329	476	154	20.33	377	5.99	12,461

Sample ID	Easting	Northing	La (ppm)	Ce (ppm)	Dy (ppm)	Eu (ppm)	Nb (ppm)	Nd (ppm)	Pr (ppm)	Sm (ppm)	Tb (ppm)	Y (ppm)	P ₂ O ₅ wt%	TREO (ppm)
PHA0029	801371	8280158	1834	2970	137	52.83	397	1252	387	186	26.91	490	8.37	9,079
PHA0030	801373	8280158	1831	3481	133	55.41	404	1414	450	206	26.31	496	7.8	10,003
PHA0031	801375	8280157	1845	3554	87.29	53.56	2514	1629	479	230	18.76	301	4.8	10,052
PHA0032	801377	8280157	1854	2766	135	57.63	216	1311	371	222	26.86	465	7.17	8,924
PHA0033	801383	8280155	4853	5614	122	64.83	77	1699	583	249	25.56	415	5.87	16,603
PHA0034	801385	8280154	7949	8553	96.58	56.8	77	2091	812	225	20.98	336	4.58	24,355
PHA0035	801387	8280154	827	1358	48.75	18.58	22	427	133	65.7	9.11	182	2.92	3,782
PHA0036	801389	8280153	1246	2062	85.89	30.61	94	673	204	107	16.28	319	6.82	5,867
PHA0037	801391	8280153	1014	1640	42.55	17.59	69	515	160	69.5	8.29	167	7.6	4,455
PHA0039	801393	8280152	1289	2006	60.57	24.45	92	571	182	85.3	11.99	218	6.29	5,469
PHA0040	801394	8280152	1491	2523	61.89	25.4	98	737	234	96.8	12.04	245	7.02	6,649
PHA0041	801396	8280151	10000	10000	211	147	109	4985	1000	628	51.45	647	7.17	33,597
PHA0042	801398	8280151	2429	3828	123	62.06	194	1769	523	259	24.6	435	5.62	11,601
PHA0043	801400	8280150	2614	3933	153	61.01	243	1635	504	242	28.41	534	9.41	11,944
PHA0044	801402	8280150	2514	3814	130	58.81	261	1671	504	240	25.66	441	5.83	11,540

(c)Mota Engil/Optichem, 2014

Trench ID	Trench Limits		Total Length	Sample Intersection				Intersection			Weighted Average TREO wt%
	Easting	Northing		From East	From North	To East	To North	From	To	Length	
TUTR01	801206.47	8279885.32	0.00	801206.47	8279885.32	801219.82	8279860.90	0	28	28.000	0.66
TUTR01	801223.63	8279853.92	36.58								
TUTR03	801235.80	8280157.50	0.00	801235.80	8280157.50	801294.21	8280158.46	0	60	60	0.83
TUTR03	801294.21	8280158.46	60.00								
TUTR04	801204.22	8280341.42	0.00	801204.22	8280341.42	801222.97	8280366.32	0	34	34	0.97
TUTR04	801222.97	8280366.32	34.00								
TUTR09	801301.50	8280081.74	0.00								
TUTR09				801305.19	8280081.50	801314.40	8280080.90	4	16	12	0.95
TUTR09				801325.46	8280080.18	801362.32	8280077.78	26	68	42	0.74
TUTR09	801367.85	8280077.42	74.24								
TUTR10	801328.80	8280169.35	0.00	801328.80	8280169.35	801403.33	8280149.66	0	83	83	1.72
TUTR10	801403.33	8280149.66	83.04								
TUTR12	801293.07	8280030.76	0.00	801293.07	8280030.76	801336.05	8280028.49	0	48	48	1.11
TUTR12	801339.79	8280028.29	52.46								
TUTR13	800798.25	8280056.76	0.00	800798.25	8280056.76	800773.42	8280072.40	0	30	30	1.88
TUTR13	800773.42	8280072.40	29.58								
TUTR15	801293.41	8280296.29	0.00	801293.41	8280296.29	801314.09	8280310.93	0	28	28	0.99
TUTR15	801314.09	8280310.93	26.97								
TUTR16	801228.12	8280301.54	0.00	801228.12	8280301.54	801259.12	8280333.09	0	52	52	0.89
TUTR16				801264.08	8280338.14	801290.12	8280364.64	58	112	54	1.26
TUTR16	801290.12	8280364.64	112.00								
TUTR17	801012.13	8280018.47	0.00								
TUTR17				801012.54	8280016.54	801013.38	8280012.69	2	8	6	0.61
TUTR17				801014.21	8280008.84	801015.04	8280004.98	10	16	6	0.51
TUTR17				801019.20	8279985.73	801020.45	8279979.95	34	42	8	0.57
TUTR17				801022.11	8279972.24	801031.27	8279929.88	48	94	46	0.76
TUTR17				801032.93	8279922.17	801035.43	8279910.62	100	114	14	0.62
TUTR17	801035.85	8279908.69	116.84								

personal use only

JORC Code, 2012 Edition – Acquisition of Tundulu REE/Phosphate Project, Malawi.

[Note – The contents of this Table are based on materials that AuKing’s Competent Person has been able to access comprising the following reports:

- Garson, M. (1962) *The Tundulu carbonatite ring-complex in southern Nyasaland. Memoirs of the Geological Survey of Malawi*, 2.
- *Report on the Cooperative Mineral Exploration in the Chilwa Alkaline Area, Republic of Malawi (Phase II). Report by Japan International Cooperation Agency (JICA) March 1988.*
- *A preliminary report on the mineralogy of the Tundulu and Songwe carbonatite complexes, Malawi. British Geological Survey Mineralogy and Petrology Report No. WG/88/6R, compiled by Dr. M.T. Styles, June 1988.*
- *Update Report on the Tundulu Phosphate and Rare Earth Project. Report compiled by A.W. Kruger for Mota Engil, April 2016.*
- *DY6 Metals Ltd announcement to ASX 27 May 2024, ‘Additional historical drilling results confirms Tundulu REE potential.’*
- *SEM Characterisation Report, Tundulu REE Project. Report by RSC Consultants for DY6 Metals, by M. Ince and M. Kartal, 28 January 2025.*

Together in this Table these reports are referred to as the “Technical Reports”].

Section 1 Sampling Techniques and Data

Criteria	JORC Code explanation	Commentary
Sampling techniques	<ul style="list-style-type: none"> • Nature and quality of sampling (eg cut channels, random chips, or specific specialised industry standard measurement tools appropriate to the minerals under investigation, such as down hole gamma sondes, or handheld XRF instruments, etc). These examples should not be taken as limiting the broad meaning of sampling. • Include reference to measures taken to ensure sample representivity and the appropriate calibration of any measurement tools or systems used. • Aspects of the determination of mineralisation that are Material to the Public Report. In cases where ‘industry standard’ work has been done this would be relatively simple (eg ‘reverse circulation drilling was used to obtain 0.5 m samples from which 3 kg was pulverised to produce a 30 g charge for fire assay’). In other cases, more explanation may be required, such as where there is coarse gold that has inherent sampling problems. Unusual commodities or mineralisation types (eg submarine nodules) may warrant disclosure of detailed information. 	<ul style="list-style-type: none"> • The Technical Reports document the existence of a number of historical drilling programmes. • Anglo American Corporation undertook a short drilling programme (9 holes for 260m) in 1956 for phosphate in conjunction with the Geological Survey. • In 1970 the Geological Survey also drilled a further 5 diamond core holes in a localised area on the eastern slope of Nathace Hill. • Owing to the age, and incomplete nature of the results from the Anglo American Corporation and Geological Survey drill programmes, no reliance has been placed on these results in this announcement, and the programmes have been mentioned for completeness sake only. • The Japanese International Cooperation Agency (JICA) undertook a diamond drilling programme (27 holes for 1,355.58 metres) in 1987. Bit size was TK60, with a hole diameter of 2.362” (60 mm), giving a core diameter of 1.728” (43.9 mm). • A joint-venture between Mota-Engil and Optichem undertook further drilling in the period 2014-15. A total of 55 holes were drilled for 7,002 m. Most of the drilling undertaken was reverse circulation, but 5 (possibly 8?) holes were diamond core, up to a depth of 220 m. • The Mota Engil - Optichem JV also reopened 11 historic trenches for sampling as part of the 2014-15 exploration programme.

Criteria	JORC Code explanation	Commentary
Drilling techniques	<ul style="list-style-type: none"> Drill type (eg core, reverse circulation, open-hole hammer, rotary air blast, auger, Bangka, sonic, etc) and details (eg core diameter, triple or standard tube, depth of diamond tails, face-sampling bit or other type, whether core is oriented and if so, by what method, etc). 	<ul style="list-style-type: none"> JICA used a TK60 bit size with a hole diameter of 2.362” (60 mm), giving a core diameter of 1.728” (43.9 mm). The Anglo American and Geological Survey drilling programmes were also coring programmes but no details are available. The Mota Engil - Optichem drilling was primarily by RC (no size available), but 5 holes were drilled by coring – size unspecified.
Drill sample recovery	<ul style="list-style-type: none"> Method of recording and assessing core and chip sample recoveries and results assessed. Measures taken to maximise sample recovery and ensure representative nature of the samples. Whether a relationship exists between sample recovery and grade and whether sample bias may have occurred due to preferential loss/gain of fine/coarse material. 	<ul style="list-style-type: none"> Drill recovery figures are available for the JICA diamond Drilling programme and are predominantly extremely good (>98%). No recovery figures have been located for the Anglo American, Geological Survey and Mota Engil - Optichem coring programmes. Based on the rock-types in question and massive nature of the lithologies intersected, very good sample recovery is anticipated and supported by the JICA observations.
Logging	<ul style="list-style-type: none"> Whether core and chip samples have been geologically and geotechnically logged to a level of detail to support appropriate Mineral Resource estimation, mining studies and metallurgical studies. Whether logging is qualitative or quantitative in nature. Core (or costean, channel, etc) photography. The total length and percentage of the relevant intersections logged. 	<ul style="list-style-type: none"> Moderately detailed core logs are available for the 1987 JICA diamond drilling programme. Detailed core logs are available for the Mota Mota Engil - Optichem drilling. Basic lithological information is available for the Mota Engil - Optichem drilling programme.
Sub-sampling techniques and sample preparation	<ul style="list-style-type: none"> If core, whether cut or sawn and whether quarter, half or all core taken. If non-core, whether riffled, tube sampled, rotary split, etc and whether sampled wet or dry. For all sample types, the nature, quality and appropriateness of the sample preparation technique. Quality control procedures adopted for all sub-sampling stages to maximise representivity of samples. Measures taken to ensure that the sampling is representative of the in-situ material collected, including for instance results for field duplicate/second-half sampling. Whether sample sizes are appropriate to the grain size of the material being sampled. 	<ul style="list-style-type: none"> Information about the sub-sampling technique used by JICA during the diamond drilling programme is not available. The individual sample length is unclear and JICA only present summary information concerning the drill intersections. JICA only analysed approximately 20% of the available core hence there is some concern that the sampling may not have been completely representative of the sequence drilled. All RC and trench samples obtained by the Mota Engil - Optichem programme during the period 2014 – 15 were split using a riffle splitter. Approximately 1 kg sized samples were despatched for assay. A total of 4,564 RC samples and 335 trench samples were despatched for analysis. A total of 927 half-core samples were despatched for analysis. The Mota Engil - Optichem sampling approach is considered appropriate given the generally massive nature of the mineralisation style.
Quality of assay data and laboratory tests	<ul style="list-style-type: none"> The nature, quality and appropriateness of the assaying and laboratory procedures used and whether the technique is considered partial or total. For geophysical tools, spectrometers, handheld XRF instruments, etc, the parameters used in determining the analysis including instrument make and model, reading times, calibrations 	<ul style="list-style-type: none"> No details of the laboratory or analytical methods used are available for the 1987 JICA drill sampling. Analyses were carried out for the following rare earth elements: La, Ce, Nd, Sm, Eu, Tb and also Nb, Sr, Y and P. Mota Engil - Optichem RC and trench samples were shipped to SGS for analytical work. Multi-element analysis was carried out by SGS

Criteria	JORC Code explanation	Commentary
	<p>factors applied and their derivation, etc.</p> <ul style="list-style-type: none"> Nature of quality control procedures adopted (eg standards, blanks, duplicates, external laboratory checks) and whether acceptable levels of accuracy (i.e. lack of bias) and precision have been established. 	<p>for the following elements: Ag, As, Al, Ba, Be, Ca, Cd, Ce, Co, Cr, Cs, Cu, Dy, Er, Eu, Fe, Ga, Gd, Ge, Hf, Ho, In, K, La, Li, Lu, Mg, Mn, Mo, Nb, Nd, Ni, P, Pb, Pr, Rb, Sb, Sc, Sm, Sn, Sr, Ta, Tb, Th, Ti, Tl, Tm, U, V, W, Y, Yb, Zn. No further details are available other than the method used was ICP.</p> <ul style="list-style-type: none"> Mota Engil - Optichem undertook routine QA/QC practices with each assay batch involving the insertion of duplicates, blanks and standards into the assay sequence every 20 samples.
Verification of sampling and assaying	<ul style="list-style-type: none"> The verification of significant intersections by either independent or alternative company personnel. The use of twinned holes. Documentation of primary data, data entry procedures, data verification, data storage (physical and electronic) protocols. Discuss any adjustment to assay data. 	<ul style="list-style-type: none"> No verification has been conducted. No twinned holes have been drilled. Sampling and data handling and storage protocols have not been sighted. No adjustment to assay data appears to have been undertaken
Location of data points	<ul style="list-style-type: none"> Accuracy and quality of surveys used to locate drill holes (collar and down-hole surveys), trenches, mine workings and other locations used in Mineral Resource estimation. Specification of the grid system used. Quality and adequacy of topographic control. 	<ul style="list-style-type: none"> Drill collar and costean locations have been recorded by GPS with reference to Zone 36L of the WGS84 datum, to approximately one metre accuracy. Only set-up azimuth and inclination have been recorded for the JICA drilling. Detailed, down hole survey information from a multi-shot instrument is available for much of the Mota Engil - Optichem drilling. Other holes only have a set-up azimuth and inclination recorded. Topographic control is considered to be adequate for the current purpose.
Data spacing and distribution	<ul style="list-style-type: none"> Data spacing for reporting of Exploration Results. Whether the data spacing and distribution is sufficient to establish the degree of geological and grade continuity appropriate for the Mineral Resource and Ore Reserve estimation procedure(s) and classifications applied. Whether sample compositing has been applied. 	<ul style="list-style-type: none"> Data obtained from the Technical Reports is preliminary in nature and is not sufficiently comprehensive for Mineral Resource estimation purposes. Drill density could be considered reasonable and adequate to construct major lithological units but not in sufficient detail for Mineral Resource estimation purposes. For the Mota Engil - Optichem RC drilling, composite length selection was based on preliminary XRF readings of the individual metre samples. All samples which showed elevated phosphate or REE levels were sent for analysis as individual metres while other lithologies were composited to 2 or 3 metre intervals.
Orientation of data in relation to geological structure	<ul style="list-style-type: none"> Whether the orientation of sampling achieves unbiased sampling of possible structures and the extent to which this is known, considering the deposit type. If the relationship between the drilling orientation and the orientation of key mineralised structures is considered to have introduced a sampling bias, this should be assessed and reported if material. 	<ul style="list-style-type: none"> It is considered that the inclined Mota Engil - Optichem drillholes were largely, as far as topography and access permitted, drilled at a reasonably suitable angle to intersect the moderately well defined, mostly steeply dipping mineralisation orientation. The JICA drilling, all the holes being relatively short and vertical, is considered less useful in informing the structural understanding of the deposit and has accordingly been given a lesser

Criteria	JORC Code explanation	Commentary
		<p>emphasis in the images supplied with this announcement (see Appendix B (b)).</p> <ul style="list-style-type: none"> The massive nature of the mineralisation would seem to preclude the presence of any significant orientation bias.
Sample security	<ul style="list-style-type: none"> The measures taken to ensure sample security. 	<ul style="list-style-type: none"> No information is available to assess measures taken to ensure sample security.
Audits or reviews	<ul style="list-style-type: none"> The results of any audits or reviews of sampling techniques and data. 	<ul style="list-style-type: none"> No independent audit or review has been undertaken to date.

Section 2 Reporting of Exploration Results

Criteria	JORC Code explanation	Commentary
Mineral tenement and land tenure status	<ul style="list-style-type: none"> Type, reference name/number, location and ownership including agreements or material issues with third parties such as joint ventures, partnerships, overriding royalties, native title interests, historical sites, wilderness or national park and environmental settings. The security of the tenure held at the time of reporting along with any known impediments to obtaining a license to operate in the area. 	<ul style="list-style-type: none"> AuKing's Tundulu REE project is located in southeastern Malawi, approximately 90 km east of Blantyre. The Tundulu Project lies within Exploration Licence No. EL0731/24 which was granted on 27 May 2024. EL0731/24 covers an area of approximately 91.5 square kilometres. The Licence is currently 100% held in the name of Malawian registered Green Exploration Ltd, a subsidiary of Tusker Minerals Limited. There are no known third-party interests affecting the Licence. There are no known impediments to operating in the project area.
Exploration done by other parties	<ul style="list-style-type: none"> Acknowledgment and appraisal of exploration by other parties. 	<ul style="list-style-type: none"> Anglo American Corporation undertook a short drilling programme (9 holes for 260m, Ang01 – 09) in 1956 for phosphate in conjunction with the Geological Survey. Garson (1962) was the first to fully describe the Tundulu Complex in a Geological Survey Memoir. In 1970 the Geological Survey also drilled a further 5 diamond core holes in a localised area on the eastern slope of Nathace Hill. The Japanese International Cooperation Agency (JICA) undertook extensive exploration between 1987 – 1991 including surface geochemical sampling and a significant drilling programme. JICA drilled 27 holes for 1,355.5 metres, JMT01 – JMT27 in 1987, as previously referenced in Table 1, Section 1 (above). The Mota Engil - Optichem Joint Venture completed 7,002 metres of drilling in 55 holes (TU001 – TU110) and reopened 11 historic trenches in the period 2014-15, as previously referenced in Table 1, Section 1 (above). The Mota Engil - Optichem Joint Venture also completed a ground radiometric survey over Nathace Hill. Most recently, ASX-listed DY6 Metals Ltd (now Tusker Minerals Ltd) completed a programme of metallurgical sampling from pre-existing costean trenches to assess TREO and phosphate grades. Tusker Minerals has also recognised elevated Ga grades in existing drill data and undertaken a programme of soil and rock sampling to

Criteria	JORC Code explanation	Commentary
		clarify the distribution of the Ga mineralisation.
Geology	<ul style="list-style-type: none"> • <i>Deposit type, geological setting and style of mineralisation.</i> 	<ul style="list-style-type: none"> • Tundulu comprises a carbonatite, agglomerate and nepheline syenite ring complex intruded into fenitized basement lithologies. • Basement lithologies comprise late Precambrian gneissic sequences. • The Tundulu ring complex comprises three related igneous centres. • The first igneous centre, focused on Tundulu Hill and 2 km in diameter, comprises brecciated potassic fenites (feldspathic breccia) and carbonatite agglomerates comprising angular fragments of potassic fenite hosted in a carbonate matrix, and calcite carbonatite (sövite) dykes. Associated rocks include dykes of nephelinite, melanephelinite, and dark, Fe-rich, REE-bearing carbonate rocks described as siderite sövite. • The second igneous centre, at Nathace Hill, primarily comprises a 500-600m wide agglomerate vent, differing from the carbonate-agglomerate on Tundulu Hill in that it is formed of fragments of trachyte, feldspathic fenite, sövite, dolerite and fine-grained sandstone (possibly tuffisite) in a trachyte matrix. This vent is cut by sheets of calcite carbonatite, apatite-rich calcite carbonatite and quartz-apatite lithologies and bastnäsite-bearing ankerite carbonatites. Locally, the matrix of the agglomerate on Nathace Hill is replaced by late quartz-baryte veins, likely to be related to the silicification of the apatite rocks. • The third igneous centre developed after extensive faulting around Tundulu and comprises a series of nephelinite and beforsite plugs and sheets, variably altered to calcitic and ankeritic units.
Drill hole information	<ul style="list-style-type: none"> • <i>A summary of all information material to the understanding of the exploration results including a tabulation of the following information for all Material drill holes:</i> <ul style="list-style-type: none"> • <i>easting and northing of the drill hole collar</i> • <i>elevation or RL (Reduced Level – elevation above sea level in metres) of the drill hole collar</i> • <i>dip and azimuth of the hole</i> • <i>down hole length and interception depth</i> • <i>hole length</i> • <i>If the exclusion of this information is justified on the basis that the information is not Material and this exclusion does not detract from the understanding of the report, the Competent Person should clearly explain why this is the case.</i> 	<ul style="list-style-type: none"> • Tusker Minerals (formerly DY6 Metals) has previously compiled a full tabulation of all previous drilling undertaken at Tundulu Hill (ASX Release 27/5/2024, Additional historical drilling results confirm Tundulu REE potential.)
Data aggregation methods	<ul style="list-style-type: none"> • <i>In reporting Exploration Results, weighting averaging techniques, maximum and/or minimum grade truncations (e.g. cutting of high grades) and cut-off grades are usually Material and should be stated.</i> • <i>Where aggregate intercepts incorporate short lengths of high-grade results and longer lengths of low-grade results, the procedure used for such</i> 	<ul style="list-style-type: none"> • The drill intersections reported within this release from the 2013-14 Mota Engil - Optichem drilling programme comprise length-weighted intersection averages based on a 0.5% TREO cut-off. • The reported TREO intersection values for the Mota Engil - Optichem drilling includes the full suite of REE and Y.

Criteria	JORC Code explanation	Commentary
	<p>aggregation should be stated and some typical examples of such aggregations should be shown in detail.</p> <ul style="list-style-type: none"> The assumptions used for any reporting of metal equivalent values should be clearly stated. 	<ul style="list-style-type: none"> The drill intersections reported within this release from the 1987 JICA drilling programme are assumed to comprise length-weighted intersection averages based on a 1% TREO cut-off. The reported TREO intersection values for the JICA drilling does not include the full suite of rare earths and only includes La, Ce, Nd, Sm, Eu, Tb and Y. No top-cutting has been applied. Metal equivalent values have not been used in this release.
Relationship between mineralisation widths and intercept lengths	<ul style="list-style-type: none"> These relationships are particularly important in the reporting of Exploration Results. If the geometry of the mineralisation with respect to the drill hole angle is known, its nature should be reported. If it is not known and only the down hole lengths are reported, there should be a clear statement to this effect (e.g. 'down hole length, true width not known'). 	<ul style="list-style-type: none"> The reported historical drillhole intersections in the Tundulu area are based on reported down hole lengths. The inclined nature of the drillholes is considered to have been appropriate given the currently interpreted steeply dipping character of the carbonatite sheets. No new mineralisation is being reported, and historical results are included for context.
Diagrams	<ul style="list-style-type: none"> Appropriate maps and sections (with scales) and tabulations of intercepts should be included for any significant discovery being reported. These should include but not be limited to a plan view of drill hole collar locations and appropriate sectional views. 	<ul style="list-style-type: none"> A drill hole collar location plan and representative cross section showing the extent and morphology of the carbonatite host unit are included in the body of the release.
Balanced Reporting	<ul style="list-style-type: none"> Accuracy and quality of surveys used to locate drill holes (collar and down-hole surveys), trenches, mine workings and other locations used in Mineral Resource estimation. Where comprehensive reporting of all Exploration Results is not practicable, representative reporting of both low and high grades and/or widths should be practiced to avoid misleading reporting of Exploration Results. 	<ul style="list-style-type: none"> Reporting is consistent with the limited data and information that is currently available in the Technical Reports.
Other substantive exploration data	<ul style="list-style-type: none"> Other exploration data, if meaningful and material, should be reported including (but not limited to) geological observations; geophysical survey results; geochemical survey results; bulk samples - size and method of treatment; metallurgical test results; bulk density, groundwater, geotechnical and rock characteristics; potential deleterious or contaminating substances. 	<ul style="list-style-type: none"> The project area has been systematically geochemically sampled by rock chip sampling with whole rock analysis to characterise the principal rock types in the Tundulu and Nathace Hill areas. A total of 76 samples has been collected. There is basic total count radiometric coverage across the Nathace and Tundulu Hill areas on 100m spaced E-W oriented lines over an area of 1 km NS x 1.8km EW. The survey highlights an extensive area of radiometric response coincident with the prospective lithologies. Initial mineralogical assessment work has been undertaken on, firstly, the JICA core, and more recently, on the core from the Optichem – Mota Engil drilling programme. The principal REE-bearing minerals are bastnaesite and synchysite while the principal phosphate mineral is apatite. Metallurgical work carried out by Mota Engil - Optichem includes trial flotation testwork carried out on core samples in an effort to produce separate phosphate and synchysite - bastnaesite concentrates. More recently DY6 Metals undertook test-work on samples from a surface trench to evaluate flotation test work strategies and to evaluate

Criteria	JORC Code explanation	Commentary
Further work	<ul style="list-style-type: none"> <i>The nature and scale of planned further work (e.g. tests for lateral extensions or depth extensions or large- scale step-out drilling).</i> <i>Diagrams clearly highlighting the areas of possible extensions, including the main geological interpretations and future drilling areas, provided this information is not commercially sensitive.</i> 	<p>the potential to produce fertiliser. Being surface samples from one trench area, it is considered that a more representative sampling and testing program based upon drill core samples is required.</p> <ul style="list-style-type: none"> This is expected to include an initial drone LIDAR survey, high-resolution aerial photography and aeromagnetic coverage of the prospect area. This will be paired initially with an RC and diamond drilling campaign aimed at evaluating the extent of the REE mineralisation in the immediate vicinity of the previously delineated carbonatite sheets. The drilling will provide sufficient information for the completion of a mineral resource estimate to be reported according to the JORC 2012 guidelines. Metallurgical sampling from drillhole core samples to support the resource estimate is also envisaged.

For personal use only