

20 April 2026

## ASX ANNOUNCEMENT

# Paquin Drill Results Indicate a Significant Increase in Gold Grade at Depth

### Highlights

- Assays received from Phase 2 diamond drilling at the Paquin Prospect of the Bousquet Project highlight further high grade gold, with significant intercepts such as:
  - 3.8m @ 5.03 g/t Au from 59.7m (BO-26-60)
    - Inc. 1.3m @ 12.80 g/t from 60.7m
  - 6.1m @ 1.24 g/t Au from 74.9m (BO-26-64)
  - 4.65m @ 0.72 g/t Au from 121.35m (BO-26-61)
- 36 significant gold intercepts identified in the phase 2 drill program, taking the total significant intercepts to 138 for Bousquet
- Bonanza intercept 19.40m @ 17.29 g/t Au from 172.5m (BO-26-63)<sup>1</sup>, indicating a significant increase in gold grade down plunge of BO-26-64
- Phase 2 drilling completed at the Bousquet Project with 7 holes drilled for a total of 1,639m
- Bousquet Gold Project is located on Cadillac Break in Quebec, Canada, a regional structure associated with world-class gold mines (>110 Moz Au<sup>i</sup>)
- Situated within 15km of multi-million ounce working gold mines (Agnico Eagle's La Ronde - 15.8Moz Au<sup>ii</sup> and Iamgold's Westwood - 2.4Moz Au<sup>iii</sup>)

### Olympio's Managing Director, Sean Delaney, commented:

*"We are excited to see the results from the phase 2 drilling at Bousquet demonstrate the potential for increases in gold grade moving down plunge of the main lode. Our plan is to test the lateral extension of the 19.4m @ 17.29 g/t intercept in hole BO-26-64 with the next drilling program in late May and then test the down plunge extension of the main lode. The upcoming televiewer survey will help to confirm the structural links between holes. The team is looking forward to compiling these results and returning to drilling in late May."*

**Olympio Metals Limited (ASX:OLY) (Olympio or the Company)** is pleased to announce the further assay results from the phase 2 drilling at Bousquet. The program has produced an additional 36 significant intercepts, including the high-grade intercept **3.8m @ 5.03 g/t Au from**

<sup>1</sup> ASX Release, 19.40m @ 17.29 g/t Gold Intercept in Hole BO-26-63 at Bousquet, 31<sup>st</sup> March 2026

**153.6m (BO-26-60).** This has brought the total significant intercept count to 138 for Olympio's drilling on the Bousquet Project.

The results from hole BO-26-64 (**6.1m @ 1.24 g/t Au from 74.9m**) has demonstrated that the Main Lode at Paquin is significantly increasing in grade at depth. This intercept is the closest position to the current 'up plunge' model orientation of the 'Main Lode' zone at Paquin and has produced an 8 gram meter gold intercept, with a vertical depth of 65m. The previously reported intercept of **19.40m @ 17.29 g/t Au from 172.5m (BO-26-63)** intersected the Main Lode zone at a vertical depth of 141.5m and produced a 335 gram meter gold intercept. This is a 97% increase in gold gram meters over approximately 100m down plunge (plunge orientation to be confirmed, intercepts have different apparent thickness of the lode).

Drill hole BO-26-60 successfully intersected a high-grade zone with **3.8m @ 5.03 g/t Au from 153.6m (BO-26-60)**. This was especially significant as there was no historical sampling of the adjacent 1940s drill holes. It is not clear at this stage if this represents a new gold lode or an isolated zone. The Company will use the data from the upcoming televiewer survey to gain further context of this high-grade intercept.

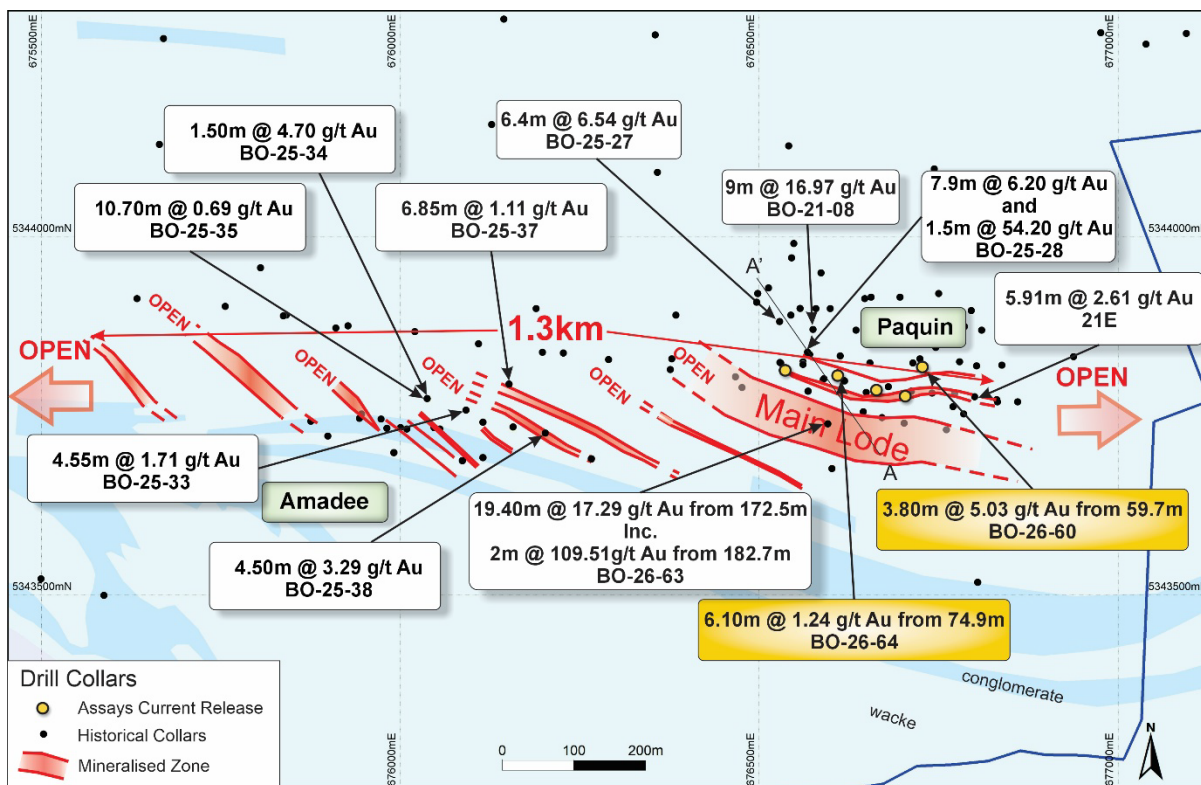


Figure 1 Plan view map of the Paquin and Amadee prospects

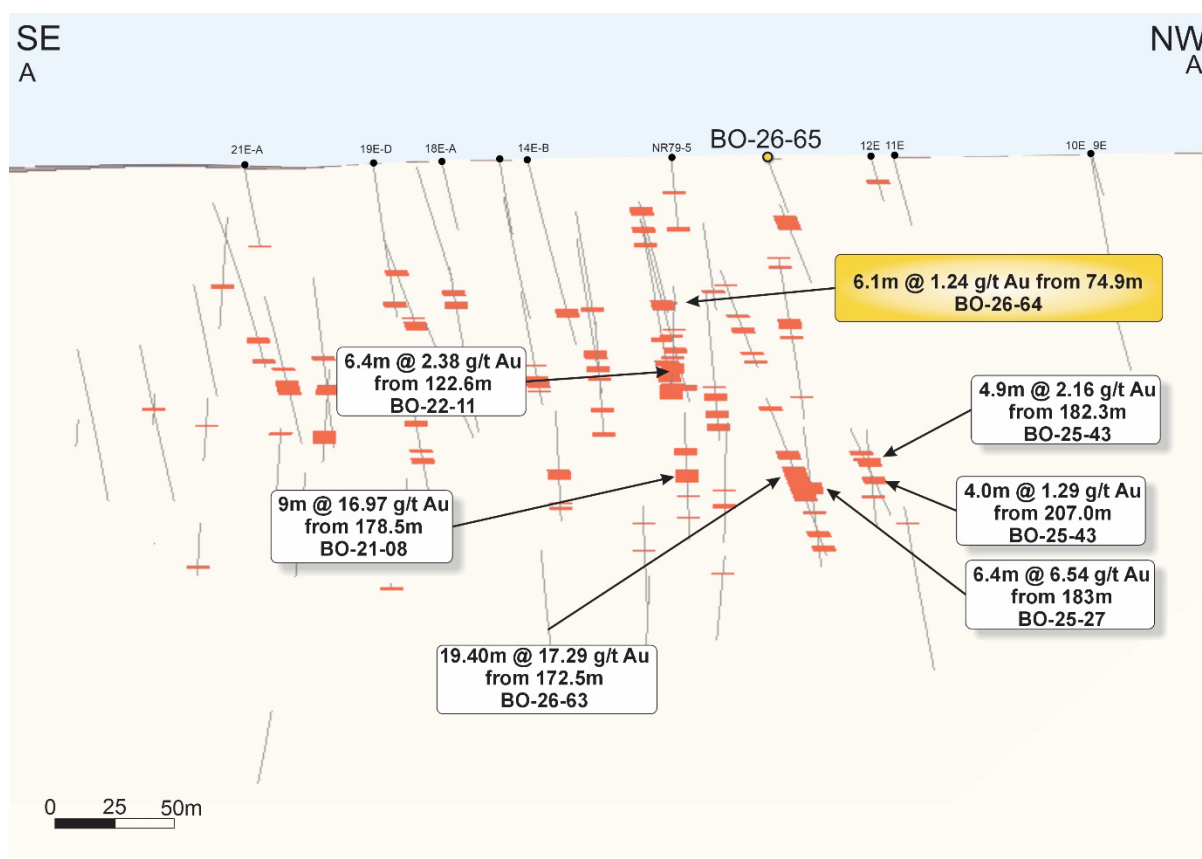


Figure 2 Paquin cross section A-A' showing significant gold intersections (red) ( $\geq 1\text{m}$  @  $\geq 0.5\text{g/t Au}$ , max 2m internal waste).

Olympio has the option to acquire an 80% interest in the Bousquet Project in Quebec from Bullion Gold Resources for total payment of C\$1.25M (cash and shares) and an exploration investment of C\$2M. Olympio has made payments of C\$0.30M (cash and shares) to date and completed exploration spend of nearly C\$1.0M. Bullion will retain a 20% undivided interest (net carried interest) in this project.

**Table 1:** Significant gold intersections (downhole) from recently returned assays of the Phase 2 drill program at the Bousquet Gold Project

( $\geq 0.5\text{g/t Au}$  cut-off, 1m min. width, 2m max. internal dilution (downhole)) (GM Au: Au grade x intercept length = Gram Meters Au) (see Table 3 for detailed results)

Hole ID	From (m)	Width (m)	g/t Au	Significant Intercept	GM Au
BO-26-60	54.5	1.5	0.5	1.50m @ 0.50 g/t Au from 54.50m	1
BO-26-60	59.7	3.8	5.03	3.80m @ 5.03 g/t Au from 59.70m	19
BO-26-60	66.7	2.8	0.56	2.80m @ 0.56 g/t Au from 66.70m	2
BO-26-60	153.6	1.4	0.86	1.40m @ 0.86 g/t Au from 153.60m	1
BO-26-60	175	1	1.24	1.00m @ 1.24 g/t Au from 175.00m	1
BO-26-61	81	1.5	0.53	1.50m @ 0.53 g/t Au from 81.00m	1
BO-26-61	121.35	4.65	0.72	4.65m @ 0.72 g/t Au from 121.35m	3
BO-26-61	129	1	1.89	1.00m @ 1.89 g/t Au from 129.00m	2
BO-26-61	135	1	1.52	1.00m @ 1.52 g/t Au from 135.00m	2
BO-26-61	139.85	3.55	0.59	3.55m @ 0.59 g/t Au from 139.85m	2
BO-26-62	79.5	4.35	0.95	4.35m @ 0.95 g/t Au from 79.50m	4
BO-26-62	104	3.3	1.45	3.30m @ 1.45 g/t Au from 104.00m	5
BO-26-62	154	1.3	1.94	1.30m @ 1.94 g/t Au from 154.00m	3
BO-26-62	157.8	1	0.94	1.00m @ 0.94 g/t Au from 157.80m	1
BO-26-62	161	1	0.74	1.00m @ 0.74 g/t Au from 161.00m	1
BO-26-62	178	1.5	0.93	1.50m @ 0.93 g/t Au from 178.00m	1
BO-26-64	5.75	1.15	0.56	1.15m @ 0.56 g/t Au from 5.75m	1
BO-26-64	18	2	1.11	2.00m @ 1.11 g/t Au from 18.00m	2
BO-26-64	26.3	4.2	1.14	4.20m @ 1.14 g/t Au from 26.30m	5
BO-26-64	36	3.25	1.05	3.25m @ 1.05 g/t Au from 36.00m	3
BO-26-64	74.9	6.1	1.24	6.10m @ 1.24 g/t Au from 74.90m	8
BO-26-64	93.45	2	2.66	2.00m @ 2.66 g/t Au from 93.45m	5
BO-26-64	100.5	3	0.85	3.00m @ 0.85 g/t Au from 100.50m	3
BO-26-64	120.75	2.85	0.89	2.85m @ 0.89 g/t Au from 120.75m	3
BO-26-64	135	1	1.31	1.00m @ 1.31 g/t Au from 135.00m	1
BO-26-64	186.9	2.1	1.04	2.10m @ 1.04 g/t Au from 186.90m	2
BO-26-65	86	2.5	0.6	2.50m @ 0.60 g/t Au from 86.00m	2

## The Next Steps

Assay results from drill hole BO-26-66 drilled at the BRG01 Target are expected shortly. The Company is in consultation with contractors to conduct a Televier survey at Paquin, to help provide additional structural insight into the mineralised veins and structures. Results from this survey will be incorporated into a phase 3 drill program. The Televier survey is expected to commence in May and the next drilling program by late May 2026.

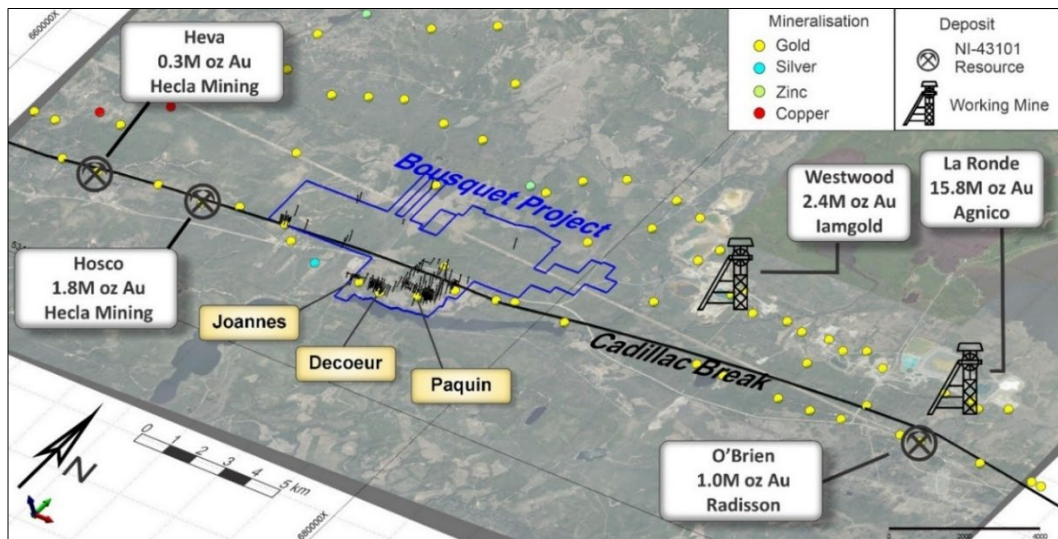


Figure 3 Setting of the Bousquet Gold Project relative to working mines and mineral resources along the Cadillac Break.

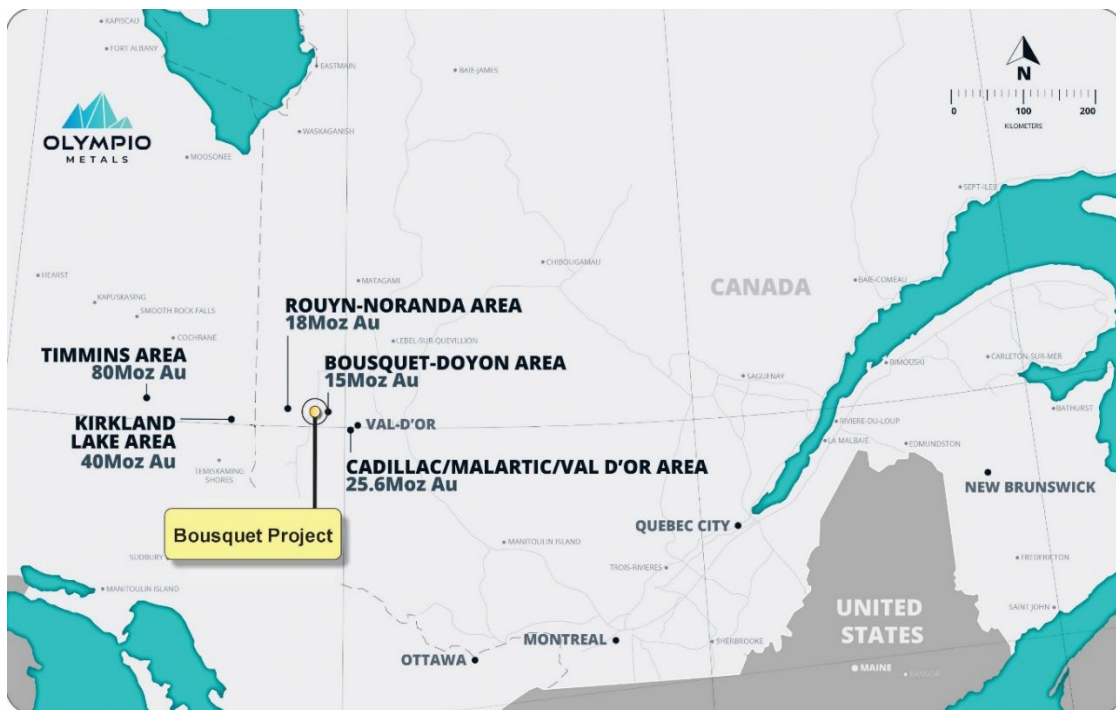


Figure 4 Bousquet Project Location

- ENDS -

This announcement is approved by the Board of Olympio Metals Limited.

**For further information:**

**Sean Delaney**  
 Managing Director  
 T: +61 409 084 771  
 E: sdelaney@olympiometals.com.au

**Jason Mack**  
 White Noise Communications  
 T: +61 400 643 799  
 E: jason@whitenoisecomms.com

### **Competent Person's Statement**

The information in this announcement that relates to exploration results is based on information compiled by Mr. Neal Leggo, a Competent Person who is a Member of the Australian Institute of Geoscientists and a consultant to Olympio Metals Limited. Mr. Leggo has sufficient experience which is relevant to the style of mineralisation and type of deposit under consideration and to the activity which he is undertaking to qualify as a Competent Person as defined in the 2012 Edition of the "Australasian Code for Reporting of Exploration Results, Mineral Resources and Ore Reserves". Mr Leggo consents to the inclusion in this announcement of the matters based on this information in the form and context in which it appears.

### **Forward Looking Statements**

This announcement may contain certain "forward looking statements" which may not have been based solely on historical facts, but rather may be based on the Company's current expectations about future events and results. Where the Company expresses or implies an expectation or belief as to future events or results, such expectation or belief is expressed in good faith and believed to have a reasonable basis.

However, forward looking statements are subject to risks, uncertainties, assumptions, and other factors which could cause actual results to differ materially from future results expressed, projected or implied by such forward looking statements. Such risks include, but are not limited to exploration risk, Mineral Resource risk, metal price volatility, currency fluctuations, increased production costs and variances in ore grade or recovery rates from those assumed in mining plans, as well as political and operational risks in the countries and states in which we sell our product to, and government regulation and judicial outcomes.

Readers should not place undue reliance on forward looking information. The Company does not undertake any obligation to release publicly any revisions to any "forward looking statement" to reflect events or circumstances after the date of this announcement, or to reflect the occurrence of unanticipated events, except as may be required under applicable securities laws.

**Table 2:** Collar information for completed drill holes from Olympio drill programs at the Bousquet Project

Hole	Prospect/Target	Azimuth	Dip	Length	Easting	Northing	Elevation	Status
BO-25-27	Paquin	188	-55	336	676528	5343882	324	28 <sup>th</sup> Jul 2025
BO-25-28	Paquin	205	-45	252	676568	5343839	322	28 <sup>th</sup> Jul 2025
BO-25-29	Paquin	195	-55	300	676496	5343909	324	12 <sup>th</sup> Aug 2025
BO-25-31	Amadee	220	-45	87	676115	5343741	336	12 <sup>th</sup> Aug 2025
BO-25-32	Amadee	230	-45	102	676092	5343758	334	12 <sup>th</sup> Aug 2025
BO-25-33	Amadee	210	-45	102	676092	5343758	334	12 <sup>th</sup> Aug 2025
BO-25-34	Amadee	210	-45	102	676038	5343774	336	12 <sup>th</sup> Aug 2025
BO-25-35	Amadee	230	-45	102	676038	5343774	336	12 <sup>th</sup> Aug 2025
BO-25-36	Amadee	220	-45	90	676157	5343734	334	12 <sup>th</sup> Aug 2025
BO-25-37	Amadee	220	-45	222	676152	5343793	340	12 <sup>th</sup> Aug 2025
BO-25-38	Amadee	230	-45	102	676202	5343726	324	12 <sup>th</sup> Aug 2025
BO-25-39	Decoeur Ext.	180	-60	207	675423	5343350	308	26 <sup>th</sup> Aug 2025
BO-25-40	Decoeur	220	-55	408	675089	5343598	320	26 <sup>th</sup> Aug 2025
BO-25-41	Paquin	187	-51	225	676496	5343909	324	30 <sup>th</sup> Sept 2025
BO-25-42	Paquin	150	-52	222	676495	5343909	325	30 <sup>th</sup> Sept 2025
BO-25-43	Paquin	210	-45	234	676551	5343907	324	30 <sup>th</sup> Sept 2025
BO-25-44	Paquin	210	-45	252	676796	5343897	323	30 <sup>th</sup> Sept 2025
BO-25-45	Paquin	210	-45	273	676601	5343677	321	28 <sup>th</sup> Oct 2025
BO-25-46	VLF	210	-45	252	676551	5343589	321	28 <sup>th</sup> Oct 2025
BO-25-47	VLF	210	-45	264	676501	5343503	320	28 <sup>th</sup> Oct 2025
BO-25-48	VLF	210	-45	312	676793	5343508	311	28 <sup>th</sup> Oct 2025
BO-25-49	VLF	210	-50	252	676843	5343595	311	28 <sup>th</sup> Oct 2025
BO-25-50	Decoeur Ext.	180	-60	162	675641	5343263	316	28 <sup>th</sup> Oct 2025
BO-25-51	Decoeur Ext.	180	-60	174	675838	5343286	310	28 <sup>th</sup> Oct 2025
BO-25-52	CB-1	153	-45	201	677036	5344273	338	28 <sup>th</sup> Oct 2025
BO-25-53	CB-1	343	-45	252	677036	5344273	338	6 <sup>th</sup> Jan 2026
BO-25-54	CB-1	155	-48	357	677011	5344327	340	28 <sup>th</sup> Oct 2025
BO-25-55	CB-1	156	-45	330	676898	5344358	339	6 <sup>th</sup> Jan 2026
BO-25-56	CB-1	156	-45	300	677092	5344409	339	6 <sup>th</sup> Jan 2026
BO-25-57	Paquin	211	-50	204	676625	5343718	321	6 <sup>th</sup> Jan 2026
BO-25-58	Paquin	210	-50	201	676674	5343705	321	6 <sup>th</sup> Jan 2026
BO-25-59	Paquin	210	-50	204	676575	5343732	324	6 <sup>th</sup> Jan 2026
BO-26-60	Paquin	210	-50	237	676713.9	5343817	323	This Announcement
BO-26-61	Paquin	208	-50	192	676685	5343765	322	This Announcement
BO-26-62	Paquin	208	-60	195	676633.8	5343776	322	This Announcement
BO-26-63	Paquin	330	-56	249	676560.2	5343688	321	31 <sup>st</sup> Mar 2026
BO-26-64	Paquin	208	-60	204	676590.2	5343801	322	This Announcement
BO-26-65	Paquin	208	-50	162	676523.1	5343782	322	This Announcement
BO-26-66	BRG01	165	-60	400	675992.4	5346671	357	Pending

Table 3 Significant gold intersections from 2025/26 drilling at the Bousquet Gold Project (Current announcement highlighted green,  $\geq 0.5\text{g/t Au}$  cut-off, 1m min. width, 2m max. internal dilution (downhole))

Hole ID	Prospect	From (m)	Width (m)	Au g/t	Significant Intercept
BO-25-27	Paquin	34.00	1.50	0.62	1.50m @ 0.62 g/t Au from 34.00m
BO-25-27	Paquin	183.00	6.40	6.54	6.40m @ 6.54 g/t Au from 183.00m
BO-25-27	Paquin	199.50	1.50	0.83	1.50m @ 0.83 g/t Au from 199.50m
BO-25-27	Paquin	218.00	1.55	2.05	1.55m @ 2.05 g/t Au from 218.00m
BO-25-28	Paquin	42.00	1.00	0.79	1.00m @ 0.79 g/t Au from 42.00m
BO-25-28	Paquin	81.30	1.00	0.77	1.00m @ 0.77 g/t Au from 81.30m
BO-25-28	Paquin	101.00	1.30	2.22	1.30m @ 2.22 g/t Au from 101.00m
BO-25-28	Paquin	104.35	2.15	1.99	2.15m @ 1.99 g/t Au from 104.35m
BO-25-28	Paquin	109.30	4.00	0.63	4.00m @ 0.63 g/t Au from 109.30m
BO-25-28	Paquin	125.40	1.20	3.18	1.20m @ 3.18 g/t Au from 125.40m
BO-25-28	Paquin	130.50	1.50	1.12	1.50m @ 1.12 g/t Au from 130.50m
BO-25-28	Paquin	138.00	7.90	6.20	7.90m @ 6.20 g/t Au from 138.00m
BO-25-28	Paquin	156.00	1.00	0.86	1.00m @ 0.86 g/t Au from 156.00m
BO-25-28	Paquin	167.60	1.40	0.95	1.40m @ 0.95 g/t Au from 167.60m
BO-25-28	Paquin	187.90	12.60	0.59	12.60m @ 0.59 g/t Au from 187.90m
BO-25-28	Paquin	235.50	1.50	54.20	1.50m @ 54.20 g/t Au from 235.50m
BO-25-29	Paquin	177.00	1.30	0.66	1.30m @ 0.66 g/t Au from 177.00m
BO-25-29	Paquin	183.00	1.50	0.78	1.50m @ 0.78 g/t Au from 183.00m
BO-25-29	Paquin	191.80	1.20	1.60	1.20m @ 1.60 g/t Au from 191.80m
BO-25-29	Paquin	199.70	1.65	0.66	1.65m @ 0.66 g/t Au from 199.70m
BO-25-29	Paquin	203.40	1.10	0.83	1.10m @ 0.83 g/t Au from 203.40m
BO-25-31	Amadee	36.00	6.30	0.95	6.30m @ 0.95 g/t Au from 36.00m
BO-25-31	Amadee	49.50	2.10	1.40	2.10m @ 1.40 g/t Au from 49.50m
BO-25-32	Amadee	49.00	1.00	2.32	1.00m @ 2.32 g/t Au from 49.00m
BO-25-33	Amadee	49.30	4.55	1.71	4.55m @ 1.71 g/t Au from 49.30m
BO-25-33	Amadee	60.00	1.30	1.14	1.30m @ 1.14 g/t Au from 60.00m
BO-25-34	Amadee	31.50	1.50	4.70	1.50m @ 4.70 g/t Au from 31.50m
BO-25-34	Amadee	39.00	5.80	1.06	5.80m @ 1.06 g/t Au from 39.00m
BO-25-34	Amadee	49.70	1.30	1.18	1.30m @ 1.18 g/t Au from 49.70m
BO-25-34	Amadee	60.00	4.30	0.98	4.30m @ 0.98 g/t Au from 60.00m
BO-25-35	Amadee	36.00	1.00	0.51	1.00m @ 0.51 g/t Au from 36.00m
BO-25-35	Amadee	57.00	1.00	0.75	1.00m @ 0.75 g/t Au from 57.00m
BO-25-35	Amadee	62.20	2.10	1.14	2.10m @ 1.14 g/t Au from 62.20m
BO-25-35	Amadee	67.80	10.70	0.69	10.70m @ 0.69 g/t Au from 67.80m
BO-25-35	Amadee	82.85	1.95	2.05	1.95m @ 2.05 g/t Au from 82.85m
BO-25-36	Amadee	31.55	1.45	1.57	1.45m @ 1.57 g/t Au from 31.55m
BO-25-36	Amadee	47.30	1.10	0.89	1.10m @ 0.89 g/t Au from 47.30m
BO-25-37	Amadee	80.15	2.25	1.29	2.25m @ 1.29 g/t Au from 80.15m
BO-25-37	Amadee	88.00	2.35	2.02	2.35m @ 2.02 g/t Au from 88.00m

Hole ID	Prospect	From (m)	Width (m)	Au g/t	Significant Intercept
BO-25-37	Amadee	113.15	6.85	1.11	6.85m @ 1.11 g/t Au from 113.15m
BO-25-38	Amadee	5.65	4.50	3.29	4.50m @ 3.29 g/t Au from 5.65m
BO-25-38	Amadee	27.40	1.15	0.54	1.15m @ 0.54 g/t Au from 27.40m
BO-25-39	Decoeur	13.25	3.75	2.24	3.75m @ 2.24 g/t Au from 13.25m
BO-25-40	Decoeur	338.00	2.15	0.84	2.15m @ 0.84 g/t Au from 338.00m
BO-25-40	Decoeur	355.50	14.50	1.96	14.50m @ 1.96 g/t Au from 355.50m
BO-25-40	Decoeur	373.80	2.00	1.39	2.00m @ 1.39 g/t Au from 373.80m
BO-25-41	Paquin	67.00	1.20	0.58	1.20m @ 0.58 g/t Au from 67.00m
BO-25-41	Paquin	182.30	4.90	2.16	4.90m @ 2.16 g/t Au from 182.30m
BO-25-41	Paquin	204.00	1.30	2.52	1.30m @ 2.52 g/t Au from 204.00m
BO-25-42	Paquin	87.00	1.00	0.57	1.00m @ 0.57 g/t Au from 87.00m
BO-25-42	Paquin	216.50	1.50	0.68	1.50m @ 0.68 g/t Au from 216.50m
BO-25-43	Paquin	190.00	2.60	3.13	2.60m @ 3.13 g/t Au from 190.00m
BO-25-43	Paquin	195.00	1.50	0.60	1.50m @ 0.60 g/t Au from 195.00m
BO-25-43	Paquin	207.00	1.00	0.65	1.00m @ 0.65 g/t Au from 207.00m
BO-25-43	Paquin	210.00	1.00	4.43	1.00m @ 4.43 g/t Au from 210.00m
BO-25-44	Paquin	99.60	1.40	1.42	1.40m @ 1.42 g/t Au from 99.60m
BO-25-44	Paquin	219.00	1.00	6.33	1.00m @ 6.33 g/t Au from 219.00m
BO-25-44	Paquin	192.60	3.90	0.33	3.90m @ 0.33 g/t Au from 192.60m
BO-25-45	VLF	21.75	1.00	1.07	1.00m @ 1.07 g/t Au from 21.75m
BO-25-45	VLF	131.00	1.00	0.70	1.00m @ 0.70 g/t Au from 131.00m
BO-25-45	VLF	188.50	1.10	3.43	1.10m @ 3.43 g/t Au from 188.50m
BO-25-48	VLF	94.20	1.05	1.40	1.05m @ 1.40 g/t Au from 94.20m
BO-25-48	VLF	103.50	1.50	0.91	1.50m @ 0.91 g/t Au from 103.50m
BO-25-48	VLF	171.50	3.00	0.60	3.00m @ 0.60 g/t Au from 171.50m
BO-25-49	VLF	198.80	1.32	0.55	1.32m @ 0.55 g/t Au from 198.80m
BO-25-50	Decoeur Ext.	37.00	2.00	1.15	2.00m @ 1.15 g/t Au from 37.00m
BO-25-51	Decoeur Ext.	47.10	7.10	1.43	7.10m @ 1.43 g/t Au from 47.10m
BO-25-51	Decoeur Ext.	59.60	2.40	1.06	2.40m @ 1.06 g/t Au from 59.60m
BO-25-51	Decoeur Ext.	68.00	1.00	0.50	1.00m @ 0.50 g/t Au from 68.00m
BO-25-53	CB-1	218.20	1.30	12.20	1.30m @ 12.20 g/t Au from 218.20m
BO-25-53	CB-1	225.00	1.50	0.66	1.50m @ 0.66 g/t Au from 225.00m
BO-25-54	CB-1	224.00	1.35	1.54	1.35m @ 1.54 g/t Au from 224.00m
BO-25-54	CB-1	245.70	1.30	0.82	1.30m @ 0.82 g/t Au from 245.70m
BO-25-54	CB-1	261.80	1.50	1.18	1.50m @ 1.18 g/t Au from 261.80m
BO-25-54	CB-1	279.30	1.00	1.73	1.00m @ 1.73 g/t Au from 279.30m
BO-25-54	CB-1	289.50	2.70	1.49	2.70m @ 1.49 g/t Au from 289.50m
BO-25-54	CB-1	334	1	0.602	1.00m @ 0.60 g/t Au from 334.00m
BO-25-54	CB-1	341	1.5	0.606	1.50m @ 0.61 g/t Au from 341.00m
BO-25-55	CB-1	156.10	1.30	0.54	1.30m @ 0.54 g/t Au from 156.10m
BO-25-55	CB-1	270.90	1.45	2.04	1.45m @ 2.04 g/t Au from 270.90m
BO-25-56	CB-1	250.50	1.50	0.51	1.50m @ 0.51 g/t Au from 250.50m

Hole ID	Prospect	From (m)	Width (m)	Au g/t	Significant Intercept
BO-25-57	Paquin	24.35	3.00	2.21	3.00m @ 2.21 g/t Au from 24.35m
BO-25-57	Paquin	33.00	3.00	1.16	3.00m @ 1.16 g/t Au from 33.00m
BO-25-57	Paquin	49.30	1.15	1.78	1.15m @ 1.78 g/t Au from 49.30m
BO-25-57	Paquin	59.80	1.20	0.50	1.20m @ 0.50 g/t Au from 59.80m
BO-25-57	Paquin	61.95	1.20	1.56	1.20m @ 1.56 g/t Au from 61.95m
BO-25-57	Paquin	92.50	1.50	4.22	1.50m @ 4.22 g/t Au from 92.50m
BO-25-57	Paquin	183.00	1.30	1.16	1.30m @ 1.16 g/t Au from 183.00m
BO-25-58	Paquin	25.10	1.30	0.58	1.30m @ 0.58 g/t Au from 25.10m
BO-25-58	Paquin	48.50	1.15	1.07	1.15m @ 1.07 g/t Au from 48.50m
BO-25-58	Paquin	64.35	1.35	1.73	1.35m @ 1.73 g/t Au from 64.35m
BO-25-58	Paquin	126.00	1.00	1.13	1.00m @ 1.13 g/t Au from 126.00m
BO-25-59	Paquin	23.75	1.45	0.83	1.45m @ 0.83 g/t Au from 23.75m
BO-25-59	Paquin	50.50	1.10	0.62	1.10m @ 0.62 g/t Au from 50.50m
BO-25-59	Paquin	70.15	4.25	0.98	4.25m @ 0.98 g/t Au from 70.15m
BO-25-59	Paquin	76.70	1.30	0.89	1.30m @ 0.89 g/t Au from 76.70m
BO-25-59	Paquin	108.00	1.50	0.57	1.50m @ 0.57 g/t Au from 108.00m
BO-25-59	Paquin	187.70	1.00	0.98	1.00m @ 0.98 g/t Au from 187.70m
BO-26-60	Paquin	54.50	1.50	0.50	1.50m @ 0.50 g/t Au from 54.50m
BO-26-60	Paquin	59.70	3.80	5.03	3.80m @ 5.03 g/t Au from 59.70m
BO-26-60	Paquin	66.70	2.80	0.56	2.80m @ 0.56 g/t Au from 66.70m
BO-26-60	Paquin	153.60	1.40	0.86	1.40m @ 0.86 g/t Au from 153.60m
BO-26-60	Paquin	175.00	1.00	1.24	1.00m @ 1.24 g/t Au from 175.00m
BO-26-61	Paquin	81.00	1.50	0.53	1.50m @ 0.53 g/t Au from 81.00m
BO-26-61	Paquin	121.35	4.65	0.72	4.65m @ 0.72 g/t Au from 121.35m
BO-26-61	Paquin	129.00	1.00	1.89	1.00m @ 1.89 g/t Au from 129.00m
BO-26-61	Paquin	135.00	1.00	1.52	1.00m @ 1.52 g/t Au from 135.00m
BO-26-61	Paquin	139.85	3.55	0.59	3.55m @ 0.59 g/t Au from 139.85m
BO-26-62	Paquin	79.50	4.35	0.95	4.35m @ 0.95 g/t Au from 79.50m
BO-26-62	Paquin	104.00	3.30	1.45	3.30m @ 1.45 g/t Au from 104.00m
BO-26-63	Paquin	37.10	2.9	0.81	2.9m @ 0.81 g/t Au from 37.1m
BO-26-63	Paquin	42.50	2.7	2.69	2.7m @ 2.69 g/t Au from 42.5m
BO-26-63	Paquin	105.50	2.2	0.70	2.2m @ 0.70 g/t Au from 105.5m
BO-26-63	Paquin	123.00	1.5	1.96	1.5m @ 1.96 g/t Au from 123.0m
BO-26-63	Paquin	138.70	2.3	0.65	2.3m @ 0.65 g/t Au from 138.7m
BO-26-63	Paquin	163.90	4.1	1.68	4.1m @ 1.68 g/t Au from 163.9m
BO-26-63	Paquin	172.50	19.4	17.29	19.4m @ 17.29 g/t Au from 172.5m
BO-26-63	Paquin	208.50	3.0	0.75	3.0m @ 0.75 g/t Au from 208.5m
BO-26-63	Paquin	216.25	2.75	1.42	2.75m @ 1.42 g/t Au from 216.25m
BO-26-64	Paquin	5.75	1.15	0.56	1.15m @ 0.56 g/t Au from 5.75m
BO-26-64	Paquin	18.00	2.00	1.11	2.00m @ 1.11 g/t Au from 18.00m
BO-26-64	Paquin	26.30	4.20	1.14	4.20m @ 1.14 g/t Au from 26.30m
BO-26-64	Paquin	36.00	3.25	1.05	3.25m @ 1.05 g/t Au from 36.00m

Hole ID	Prospect	From (m)	Width (m)	Au g/t	Significant Intercept
BO-26-64	Paquin	74.90	6.10	1.24	6.10m @ 1.24 g/t Au from 74.90m
BO-26-64	Paquin	93.45	2.00	2.66	2.00m @ 2.66 g/t Au from 93.45m
BO-26-64	Paquin	100.50	3.00	0.85	3.00m @ 0.85 g/t Au from 100.50m
BO-26-64	Paquin	120.75	2.85	0.89	2.85m @ 0.89 g/t Au from 120.75m
BO-26-64	Paquin	135.00	1.00	1.31	1.00m @ 1.31 g/t Au from 135.00m
BO-26-64	Paquin	186.90	2.10	1.04	2.10m @ 1.04 g/t Au from 186.90m
BO-26-65	Paquin	86.00	2.50	0.60	2.50m @ 0.60 g/t Au from 86.00m
BO-26-64	Paquin	5.75	1.15	0.56	1.15m @ 0.56 g/t Au from 5.75m
BO-26-64	Paquin	18.00	2.00	1.11	2.00m @ 1.11 g/t Au from 18.00m
BO-26-64	Paquin	26.30	4.20	1.14	4.20m @ 1.14 g/t Au from 26.30m
BO-26-64	Paquin	36.00	3.25	1.05	3.25m @ 1.05 g/t Au from 36.00m
BO-26-64	Paquin	74.90	6.10	1.24	6.10m @ 1.24 g/t Au from 74.90m
BO-26-64	Paquin	93.45	2.00	2.66	2.00m @ 2.66 g/t Au from 93.45m
BO-26-64	Paquin	100.50	3.00	0.85	3.00m @ 0.85 g/t Au from 100.50m
BO-26-64	Paquin	120.75	2.85	0.89	2.85m @ 0.89 g/t Au from 120.75m
BO-26-64	Paquin	135.00	1.00	1.31	1.00m @ 1.31 g/t Au from 135.00m
BO-26-64	Paquin	186.90	2.10	1.04	2.10m @ 1.04 g/t Au from 186.90m
BO-26-65	Paquin	86.00	2.50	0.60	2.50m @ 0.60 g/t Au from 86.00m

## References

<sup>i</sup> Poulsen, K., 2017 The Larder Lake-Cadillac Break and Its Gold Districts, *Economic Geology*, v. 19, pp. 133–167

<sup>ii</sup> NI 43-101 Technical Report, La Ronde Complex, Québec, Canada, 24 March 2023

<sup>iii</sup> Iamgold Corporation, Table 3: Mineral Reserves and Mineral Resources, 31 December 2023, retrieved from [https://s202.q4cdn.com/468687163/files/doc\\_news/2024/02/iag-2024-mr-estimate.pdf](https://s202.q4cdn.com/468687163/files/doc_news/2024/02/iag-2024-mr-estimate.pdf)

## JORC Code - Table 1

### Section 1 Sampling Techniques and Data

(Criteria in this section apply to all succeeding sections.)

Criteria	Explanation	Comment
Sampling techniques	<i>Nature and quality of sampling.</i>	<b>Current Exploration</b> Diamond core samples (NQ) were collected in timber core trays, sequence checked, metre marked and oriented at the drill site. The drill core was logged at Explo-logik core shack in Val D'Or by Quebec qualified geologists.
	<i>Include reference to measures taken to ensure sample representivity and the appropriate calibration of any measurement tools or systems used.</i>	<b>Historical Exploration</b> Diamond drilling to produce core samples is the only sampling technique reported. The drilling data included in this release comes from a range of historical drilling programs. These are grouped in 3 sets as follows: <b>BG Drilling:</b> Sampling techniques from <b>Bullion Gold</b> drilling 2021 to 2023 (Hole series BO-21 and BO-22, GM73520) is described in detail. <b>TM Drilling:</b> Sampling techniques from <b>Twin Mining</b> drilling 2003 to 2007 (Hole series TMN, GM61411) are described in detail.
	<i>Aspects of the determination of mineralisation that are Material to the Public Report.</i>	<b>20thC Drilling:</b> Sampling techniques from all other drilling programs (mostly pre-1947) typically have no details recorded in historical records and reports. <b>Channel Sampling:</b> GM34572 1978 Channel samples were collected by electric jack hammer under the supervision of a Quebec certified geologist. Sample density appears to be appropriate to the vein density existing in mapped outcrops.
Drilling techniques	<i>Drill type (eg core, reverse circulation, open-hole hammer, rotary air blast, auger, Bangka, sonic, etc) and details (eg core diameter, triple or standard tube, depth of diamond tails, face-sampling bit or other type, whether core is oriented and if so, by what method, etc).</i>	<b>Current Exploration</b> All drill core is NQ. All downhole surveying is done with an OMNIX42 (every 30m), rig alignment with a TN14 Gyro, diamond core was not orientated for this program. Alternatively, a downhole televiewer survey will be conducted on all holes. <b>Historical Exploration</b> All drilling within the project area has been diamond core. <b>BG, TM &amp; 20thC:</b> No records of any oriented core The drill core size is not specified for the majority of drill holes.
Drill sample recovery	<i>Method of recording and assessing core and chip sample recoveries and results assessed.</i>	<b>Current Exploration</b> Proportion of core recovered for each 3 metre interval of core drilled is recorded in the drill database.
	<i>Measures taken to maximise sample recovery and ensure representative nature of the samples.</i>	<b>Historical Exploration</b> <b>BG, TM &amp; 20thC:</b> Core recovery is not recorded for the majority of drill holes. The measures taken by previous explorer to maximise recovery is not recorded. With no recovery data available, no comment about any recovery/grade relationship is possible.
	<i>Whether a relationship exists between sample recovery and grade ...</i>	
Logging	<i>Whether core and chip samples have been logged .....</i>	<b>Current Exploration</b> All drill core was qualitatively logged by the Explo-logik staff geologist. Logging includes lithology, alteration, mineralisation, veining and photography. The main rock types observed in the logging were greywacke, siltstone and conglomerate.
	<i>Whether logging is qualitative or quantitative in nature. Core (or costean, channel, etc) photography.</i>	<b>Historical Exploration</b> <b>BG Drilling:</b> All drilling has drill logs available. The drill core was logged and marked for sampling by a professional geologist. Sample lengths ranged from 0.3 to 2.0m. The main criterion for sample selection was based on the presence of one of the visible features of the mineralised zones (sulphides, visible gold, alteration, blue quartz). Logging is qualitative. The majority of the core has been core has been logged. All descriptive logs are in French summary logging is in English.
	<i>The total length and percentage of the relevant intersections logged.</i>	<b>TM Drilling:</b> All drilling has drill logs available. Logging is qualitative. All core has been logged. All descriptive logs are in English.

		<p><b>20thC Drilling:</b> Drill logs are available for some drill holes with a range of detail/quality. Measurements are generally in imperial units (feet) and logs in either French or English.</p>
<p><b>Sub-sampling techniques and sample preparation</b></p>	<p><i>If core, whether cut or sawn and whether quarter, half or all core taken.</i></p> <p><i>If non-core, whether riffled, tube sampled, rotary split, etc and whether sampled wet or dry.</i></p> <p><i>For all sample types, the nature, quality and appropriateness of the sample preparation technique.</i></p> <p><i>Quality control procedures adopted for all sub-sampling stages to maximise representivity of samples.</i></p> <p><i>Measures taken to ensure that the sampling is representative of the in-situ material collected, including for instance results for field duplicate/second-half sampling.</i></p> <p><i>Whether sample sizes are appropriate to the grain size of the material being sampled.</i></p>	<p><b>Current Exploration</b> All core is logged, then sampling intervals are selected by the logging geologist, with a maximum sample interval of 2m. Core samples were collected by sawing each sample interval in half lengthwise with a bench rock saw. One half of the interval was returned to the core box, and the other half was placed in a plastic bag with a tag. The tag number was marked in indelible ink on the outside of the bag, and the bag was sealed with a plastic tie-wrap. Sample are sent to either AGAT Laboratories in Thunder Bay or Laboratory Expert in Rouyn-Noranda. All samples from 2025 and 2026 drilling were analysed at AGAT Laboratories; However, samples from BO-26-63 drillhole have been analysed at Laboratory Expert.</p> <p>AGAT Laboratories sample preparation The half core samples were crushed to 90% passing 2mm and then riffle split to a 250g sub-sample that was pulverised to pulp 90% passing 105µm.</p> <p>Laboratory Expert sample preparation The half core sample is dried if necessary and crushed to 75% -10 mesh. A 300gm subsample is riffled out in a Jones type riffle and this 300gm portion is pulverized to 90% -200 mesh in a ring and puck type pulveriser.</p> <p><b>Historical Exploration</b> <b>BG Drilling:</b> Core samples were collected by sawing each sample interval in half lengthwise with a bench rock saw. One half of the interval was returned to the core box, and the other half was placed in a plastic bag with a tag. The tag number was marked in indelible ink on the outside of the bag, and the bag was sealed with a plastic tie-wrap. Sample preparation was undertaken at the Lab Expert facility in Rouyn-Noranda. The half core samples were crushed to 70% passing 2mm and then riffle split to a 250g sub-sample that was pulverised to pulp 85% passing 75µm. All analyses were done using a 50g fire assay fusion (FA) with Atomic Absorption Spectroscopy (AAS) finish. Assays exceeding 3g/t Au were checked by re-assaying using FA with gravimetric finish. Where the logging geologist deemed appropriate, the sample was analysed using metallic screen assay techniques. Lab Expert protocols were considered by the Qualified Person (for GM73520) to be consistent, in general, with industry standards. <b>TM Drilling:</b> Drill core was split by hydraulic splitter, and approximately half the cores sampled. Sample preparation methods are not recorded. <b>20thC Drilling:</b> Core sampling techniques of historical drilling other than BG and TM is unknown. <b>Channel Sampling:</b> GM34572 1978 sample preparation is not recorded</p>
<p><b>Quality of assay data and laboratory tests</b></p>	<p><i>The nature, quality and appropriateness of the assaying and laboratory procedures used</i></p> <p><i>For geophysical tools, spectrometers, handheld XRF instruments, etc,</i></p> <p><i>Nature of quality control procedures adopted (eg standards, blanks, duplicates, external laboratory checks) and whether acceptable levels of accuracy (ie lack of bias) and precision have been established.</i></p>	<p><b>Current Exploration</b> Samples sent to AGAT were analysed for Au by 50g fire assay fusion (FA) with Atomic Absorption Spectroscopy (AAS) finish (202-551), and also 34 elements by 4-acid digest with ICP_OES finish (201-070). Samples with observed or suspected coarse gold as logged by the geologist were analysed by screen Fire assay (202-121). From the pulverised sample, a 1kg sub-sample was sieved to 106µm. The +106µm fraction was analysed to extinction by FA/ICP(OES) and the -106µm fraction by FA/ICP(OES). AGAT protocols are considered by the Qualified Person to be consistent, in general, with industry standards.</p> <p>Samples sent to Laboratory Expert were analysed for Au by 30gm lead fire assay (FA) with Atomic Absorption Spectroscopy (AAS) finish. Samples with values greater than 30g/t or have logged visible gold are re assayed by fire assay with gravimetric finish.</p> <p>Fire assay with gravimetric finish involves the sample being dried, if necessary, crushed and pulverized then screened using a 100-mesh screen. The -100-mesh portion is mixed and assayed in duplicate by fire assay gravimetric finish as well as all the +100-mesh portion. All individual assays are reported as well as the final calculated value.</p> <p>One certified reference material (CRM) standard and one blank were included in each batch of 20 samples (inserted at 1/19 samples) by Explo-logik staff. CRM used were OREAS 221, 230b, 231, 235b 236, 238, 239b, 242. The blank was quartz-sericite.</p> <p><b>Historical Exploration</b> <b>BG Drilling:</b> All analyses were done using a 50g fire assay fusion (FA) with Atomic Absorption Spectroscopy (AAS) finish. Assays exceeding 3g/t Au were checked by re-assaying using FA with gravimetric finish. Where the logging geologist deemed appropriate, the sample was analysed using metallic screen assay techniques.</p>

		<p>One certified reference material (CRM) standard and one blank were included in each batch of 20 samples (inserted at 1/19 samples). CRM used were SF85, SF100, SG102, SG115, SG81. 58% of the CRM assay results were reported higher than 3 standard deviations from the certified value, which is considered a poor performance from the lab. It was recommended to review the assay certificates and re-assay the pulps before and after the failed standards.</p> <p><b>TM Drilling:</b> Hole series TMN- (Twin Mining GM61411) was assayed at ALS Vancouver using a fire assay with a 30g split, AAS finish, 5ppb detection limit. Assays over 1g/t Au were re-assayed. Twin Mining reported that no quality assurance/quality control checks were performed.</p> <p><b>20thC Drilling:</b> Procedures for other historical drilling are unknown. No QA/QC data is recorded.</p> <p><b>Channel Sampling:</b> GM34572 1978 Samples were analysed at Assayers Ltd, Rouyn-Noranda. By combined Fire Assay – AAS with 7ppb DL.</p>
<p><b>Verification of sampling and assaying</b></p>	<p><i>The verification of significant intersections by independent or alternative company personnel.</i></p> <p><i>The use of twinned holes.</i></p> <p><i>Documentation of primary data, data entry procedures, data verification, data storage protocols.</i></p> <p><i>Discuss any adjustment to assay data.</i></p>	<p><b>Current Exploration</b> Significant intersections have been reviewed by Neal Leggo, Independent Geologist. No twin holes have been drilled. No documentation of data protocols has been completed</p> <p><b>Historical Exploration</b> <b>BG Drilling:</b> No independent verification or twinned holes have been used. Adequate documentation of the drill data is available. No adjustments of data are recorded. <b>TM Drilling:</b> No independent verification or twinned holes have been used. Adequate documentation of basic aspects of the drill data is available. No adjustments of data are recorded. <b>20thC Drilling:</b> No independent verification or twinned holes have been used. For the majority of historical drill holes, the data is not well documented. Translation from imperial to metric system measurements has been made in the database. <b>Channel Sampling:</b> GM34572 1978 no verification sampling is recorded</p>
<p><b>Location of data points</b></p>	<p><i>Accuracy and quality of surveys used to locate drill holes (collar and down-hole surveys), trenches, mine workings and other locations used in Mineral Resource estimation.</i></p> <p><i>Specification of the grid system used.</i></p> <p><i>Quality and adequacy of topographic control.</i></p>	<p><b>Current Exploration</b> All drillholes are located using handheld GPS, accuracy ~ +/-10m. Drill collars are surveyed using an Imdex TN14 Gyro.</p> <p><b>Historical Exploration</b> <b>BG, TM &amp; 20thC:</b> The accuracy and location method of exploration data including historical drill holes is not recorded in the reports, logs and databases available.</p> <p>Grid system used is NAD83 / UTM zone 17N in accordance with the National Topographic System or NTS used by Natural Resources Canada for mapping.</p> <p>Topographic control is satisfactory for the exploration phase at which the project is at. <b>Channel Sampling:</b> GM34572 1978 samples are mapped in varying detail in numerous maps which allow the samples to be accurately located relative to outcropping geology in the field.</p>
<p><b>Data spacing and distribution</b></p>	<p><i>Data spacing for reporting of Exploration Results.</i></p> <p><i>Whether .... appropriate for the Mineral Resource ... estimation procedure(s) ...</i></p> <p><i>Whether sample compositing has been applied.</i></p>	<p><b>Current Exploration</b> Completed drilling is consistent with spacing used in previous drill programs, and appropriate for the mineralisation targeted, typically 25m drill hole spacing minimum for Paquin, with wider and irregular spacings controlled by geology at other prospects.</p> <p><b>Historical Exploration</b> <b>BG, TM &amp; 20thC:</b> The historical drilling data has been drilled at a range of spacing, azimuth and dip to intersect the interpreted mineralised horizons. Spacing is currently insufficient for resource estimation work. No sample compositing has been applied. <b>Channel Sampling:</b> GM34572 1978 data spacing and distribution is appropriate to the vein density observed in the field</p>
<p><b>Orientation of data in relation to geological structure</b></p>	<p><i>Whether the orientation of sampling achieves unbiased sampling ....</i></p> <p><i>relationship between the drilling orientation and structures is considered to have introduced a sampling bias.</i></p>	<p><b>Current Exploration</b> BO-26-63 was drilled at 330° Azimuth to ensure the preferred orientation of 210° was not missing any vein sets. Detailed structural logging of oriented drill core and structural modelling is being undertaken to improve orientation of drill intersection as exploration work progresses.</p> <p><b>Historical Exploration</b> <b>BG, TM &amp; 20thC:</b> The drill hole sampling orientation is considered appropriate to test the mineralised target horizons. The strike of the mineralised structures targeted is generally determined with drill holes set back and angled, producing intersections across the strike, thus reducing bias.</p>

		<b>Channel Sampling:</b> GM34572 1978 sampling orientation is optimised relative to mineralised zones
<b>Sample security</b>	<i>The measures taken to ensure sample security.</i>	<p><b>Current Exploration</b> Sample security is managed by Explo-logik staff, who are highly experienced in drill core and sample management. All drill core transport, core sampling and sample transport is conducted, or managed, by Explo-logik staff. Core samples are sent by courier to AGAT laboratories in Thunder Bay Ontario or Laboratory Expert in Rouyn-Noranda</p> <p><b>Historical Exploration</b> <b>BG:</b> For shipping, samples were placed in rice bags that were individually sealed with numbered, tamper-proof security tags. The rice bags were sent to Lab Expert in Rouyn-Noranda. <b>TM:</b> The selected core intervals were split under the direction and supervision of the senior geologist. All samples were hand delivered by the senior geologist or approved project technical personnel to the ALS Chemex sample preparation laboratory in Val d'Or, Quebec. <b>20thC:</b> No information about the sample security measures is present in the historical exploration reports. <b>Channel Sampling:</b> GM34572 1978 sample security is not recorded</p>
<b>Audits or reviews</b>	<i>The results of any audits or reviews of sampling techniques and data.</i>	No reviews or audits are recorded.

## Section 2 Reporting of Exploration Results

(Criteria listed in the preceding section also apply to this section.)

Criteria	Explanation	Comment
<b>Mineral tenement and land tenure status</b>	<p><i>Type, reference name/number, location and ownership including agreements or material issues with third parties such as joint ventures, partnerships, overriding royalties, native title interests, historical sites, wilderness or national park and environmental settings.</i></p> <p><i>The security of the tenure held at the time of reporting along with any known impediments to obtaining a licence to operate in the area.</i></p>	<p>The Bousquet Project is a mineral property which consists of 71 claims (registered with the Quebec provincial government) covering (23.69 km<sup>2</sup>). The Property is located 30km east of the historic mining town of Rouyn-Noranda, in the province of Quebec, Canada. The property consists of a contiguous package of wholly owned tenements held under title by Bullion Gold Resources Corp and under option for purchase by Olympio. The tenements are current and in good standing with the Quebec Provincial government.</p> <p>A list of claim IDs is provided in Table 3 of previous ASX release 19th March 2025. Olympio are not aware of any known impediments to obtaining a licence to operate in the area.</p> <p>Numerous gold and base metal mines are currently operating in the district. New mining operations have recently been brought into production through established protocols of Quebec and Canadian authorities. No development studies have been undertaken on the Bousquet project to date.</p> <p>A royalty applies to any future mineral production. In the event that the Project is brought to commercial production, Falco will receive a 1.5% NSR royalty on the claims sold to Bullion Gold. In certain claims located in the Bousquet Township, there a number of companies holding various royalty interest. On the original Normar block, Barrick Gold and Atlanta Gold (bankrupted) each hold a 1% NSR ("Net Smelter Return") royalty while Delfer Gold Mine holds a 5% Net Profit Interest. On the Blackfly Block, Atlanta Gold holds a 1% NSR on certain claims and Globex Resources hold a 0.5% Gross Mineral Profit on 8 claims.</p>
<b>Exploration done by other parties</b>	<i>Acknowledgment and appraisal of exploration by other parties.</i>	<p>No mining has occurred on the property, according to available records.</p> <p>There have been 4 eras of active exploration on the property.</p> <ol style="list-style-type: none"> <li>1. Early 20thCentury: The main gold corridor was found and explored between 1932 and 1946. During this period, the Paquin, Decoeur, Calder Bousquet and Joannes prospects were discovered and drilled. During this period, 120 drill holes for a total of 20,530m were executed on the various gold discoveries.</li> <li>2. Late 20thCentury: During the period extending from 1967 to 1995, exploration comprised 14 drill holes for a total of 2,532m which were drilled mainly on the Paquin prospect and just north of the Bouzan Or prospect. Various types of geophysical survey including magnetic, electromagnetic (VLF, MAXMIN and AeroTem) and IP surveys were executed on the property. Breakwater also did some stripping and mapping on the southern gold shear zone.</li> <li>3. 21<sup>st</sup> Century: From 2003 to 2020, 39 drill holes were drilled for 13,574m mainly in the southeast portion of the property by Twin Mining (2003-2008, GM61411). Of the 39 drill holes, 4 holes were drilled on the Joannes Township Block and magnetic, EM and IP surveys were conducted on this block.</li> </ol> <p>The most recent exploration (2021 to 2023) has been 26 diamond drill holes on the property for a total of 6,194 metres by Bullion Gold, concentrated at Paquin and Decoeur prospects (GM73520).</p>

<p><b>Geology</b></p>	<p><i>Deposit type, geological setting and style of mineralisation.</i></p>	<p>The geology of the property consists of volcano-sedimentary rocks divided in three major Groups. From North to South, there is the Cadillac Group, which is composed of turbidites, pelitic schists with beds of polymictic conglomerate and iron formations. The Timiskaming Group is composed of greywacke, siltstone, polymictic conglomerate, and talc-chlorite-carbonate schist (possibly from the Piché Formation). Occasional beds of argillite with graphitic mudstone also occurs. The Pontiac Group is composed of greywacke, interbedded with argillite, massive to pillowed mafic flows and ultramafic flows. The Piché Group is composed of a sequence of komatiites, mafic rocks, amphibolites, volcanic tuffs and flows and granitic intrusives. In many areas, the Piché formation is superposed with the CLLDZ and lies between the Cadillac and Timiskaming Groups.</p> <p>Numerous gold prospects occur on the property. Most of them are found within a gold mineralised shear zone in the southern part of the property. Gold mineralisation is associated with structurally controlled quartz veins (typically smoky blue-grey-white quartz) and sulphides within E-W oriented, north dipping structures. The dominant host unit is Timiskaming group turbidites, and lesser conglomerate.</p> <p>The <b>Paquin</b> prospect is located between 675716 and 676832mE and 5343683 and 5343802mN giving the mineralised zone a length of 1,300m and a thickness of in excess of 100 m.</p> <p>Paquin was identified through drilling as it does not outcrop. These are two mineralised envelopes (East and West) containing blue to smoky quartz veins and veinlets accompanied by visible gold, as well as disseminated or stringers of arsenopyrite, pyrite, and pyrrhotite. Each envelope is contained within silicified and carbonatised greywackes. The longitudinal sections of the East and West mineralised envelopes show that the gold mineralization is most prominent on the eastern part of the gold corridor with a length of 400m between section 676400E and 676800E. The thickness of the mineralised zone (along the hole) varies from a few meters to 10 to 12m and, in some instances, the envelope may contain more than one mineralised zone.</p> <p>The <b>Decoeur</b> prospect is located between 674860mE and 675300mE at 5343385mN, giving the prospect a length of 440 m. The Decoeur prospect is located immediately in the south contact with the polymictic conglomerates. The mineralization is associated with talc-chlorite-quartz-carbonate schist (probably komatiitic lava flows). Previous interpretation suggested that the mineralization was associated to an E-W fault. The mineralization is composed of stringers of pyrite, chalcopyrite, arsenopyrite and galena and associated quartz veins and veinlets and local silicification. The mineralised sections vary from thirty centimetres up to 28.5m wide. The best intersection metal factor wise was in hole TMN-03-14 where an intercept 1.26 g/t Au over 18.6m was recorded.</p> <p>The <b>Joannes</b> prospect was discovered by drilling in 1937. The gold mineralization is vein-type associated with clastic sediments (turbidites) of the Timiskaming Group. Minor komatiitic basalts are also present. Gold is associated with disseminated pyrite in quartz veins. Traces of chalcopyrite and arsenopyrite are also present. The shear zone contains several quartz veins and some pyrite.</p> <p>Other prospects and showings of mineralisation identified within the property are of similar geology to these main prospects.</p>																																
<p><b>Drill hole Information</b></p>	<p><i>A summary of all information material to the understanding of the exploration results including a tabulation of the following information for all Material drill holes:</i></p>	<p>Current drilling information is provided in Tables 1 and 2 of this announcement and several other recent ASX releases on the Bousquet Project.</p> <p>All historical drillholes referred to in figures or text are included in Appendix 1 of previous ASX release 26<sup>th</sup> February 2025, together with reference document number (SIGEOM).</p> <p>For the many old historical holes, limited meta-data and detailed information are preserved in the records, thus verification of location and results is not possible.</p> <p>Basic collar information is available for all 200 drill holes as presented in Appendix 1 of previous ASX release 26<sup>th</sup> February 2025, and summarised below:</p> <table border="1" data-bbox="624 1467 1508 1691"> <thead> <tr> <th>Prospect</th> <th>Number Drill Holes</th> <th>Total Metres Drilled</th> <th>Grade (g/t) x Thickness (m) &gt; 1</th> </tr> </thead> <tbody> <tr> <td>Paquin</td> <td>62</td> <td>13183</td> <td>301</td> </tr> <tr> <td>Amadee</td> <td>14</td> <td>458</td> <td>7</td> </tr> <tr> <td>Decoeur</td> <td>25</td> <td>7217</td> <td>90</td> </tr> <tr> <td>Joannes</td> <td>28</td> <td>3674</td> <td>20</td> </tr> <tr> <td>CB-1</td> <td>11</td> <td>2128</td> <td>7</td> </tr> <tr> <td>Regional</td> <td>60</td> <td>16474</td> <td>67</td> </tr> <tr> <td><b>Total</b></td> <td><b>200</b></td> <td><b>43134</b></td> <td><b>492</b></td> </tr> </tbody> </table>	Prospect	Number Drill Holes	Total Metres Drilled	Grade (g/t) x Thickness (m) > 1	Paquin	62	13183	301	Amadee	14	458	7	Decoeur	25	7217	90	Joannes	28	3674	20	CB-1	11	2128	7	Regional	60	16474	67	<b>Total</b>	<b>200</b>	<b>43134</b>	<b>492</b>
Prospect	Number Drill Holes	Total Metres Drilled	Grade (g/t) x Thickness (m) > 1																															
Paquin	62	13183	301																															
Amadee	14	458	7																															
Decoeur	25	7217	90																															
Joannes	28	3674	20																															
CB-1	11	2128	7																															
Regional	60	16474	67																															
<b>Total</b>	<b>200</b>	<b>43134</b>	<b>492</b>																															
<p><b>Data aggregation methods</b></p>	<p><i>... weighting averaging techniques, maximum and/or minimum grade truncations should be stated.</i></p> <p><i>The assumptions used for any reporting of metal equivalent values.</i></p>	<p>Where drill intervals have been aggregated, the calculations are recorded as being weighted according to interval length. No allowance for recovery or truncations of grades are recorded in the documentation available.</p> <p>Significant drill intercepts noted in figures and tables of this announcement are reported at a minimum cut-off grade of 0.5 gram per tonne gold, minimum width of 1m (down-hole); maximum internal dilution of 2m.</p> <p>Significant drill intercepts noted in Table 1 of previous ASX releases for the Paquin and Decoeur prospects are reported at a minimum cut-off grade of 1.0 gram per tonne gold per metre.</p> <p>No metal equivalent values or formulas have been used.</p>																																

<p><b>Relationship between mineralisation widths and intercept lengths</b></p>	<p><i>These relationships are particularly important in the reporting of Exploration Results.</i></p> <p><i>If the geometry of mineralisation with respect to the drill hole angle</i></p>	<p>Sample mineralisation intervals are reported as down-hole observed intervals in drill core. The true widths of mineralisation have not been calculated on a drill hole intercept basis in available historical documentation. There are many variations of drill hole orientation and lode orientation across the prospects.</p>
<p><b>Diagrams</b></p>	<p><i>Appropriate maps and sections (with scales) and tabulations of intercepts should be included ...</i></p>	<p>The maps and figures provided in this announcement provide an overview of the Bousquet project and accurately reflect recent exploration data acquired by Olympio, and historical exploration data as provided by the vendors in project databases and reports. The accuracy of information in databases and reports will be reviewed by Olympio personnel as the project progresses. Detailed maps and figures have been provided for recent exploration by Olympio and will be provided in further market announcements as targeting work on each prospect progresses and drill testing is undertaken.</p>
<p><b>Balanced reporting</b></p>	<p><i>Where comprehensive reporting of all Exploration Results is not practicable .....</i></p>	<p>The project has seen a long history of exploration with a significant body of data collected with minimal recording of methods and parameters during the early 20<sup>th</sup> Century. Later exploration data has been reported to Quebec/Canadian/TSX standards of the day. No reporting to ASX/JORC Code standard had previously undertaken, prior to its acquisition by Olympio. Comprehensive reporting will require time consuming search and review of historical records, field assessments, inspection of preserved drill cores, etc prior to historical data being deemed suitable for reporting in the current exploration context. This is being undertaken on a prospect by prospect basis as the exploration program proceeds. To date the historical data has been found to correlate well with new data and thus confidence in the historical data is increasing.</p>
<p><b>Other substantive exploration data</b></p>	<p><i>Other exploration data, if meaningful and material, should be reported.</i></p>	<p>In 2021 Bullion gold contracted Novatam to carry out a 1,114 line-km high-resolution helicopter-borne magnetic survey on the Bousquet project.</p> <p>During the late 20<sup>th</sup> century various types of geophysical survey including magnetic, electromagnetic (VLF, MAXMIN and AeroTem) and IP surveys were executed on the property. Magnetic, EM and IP surveys were conducted on the Joannes Township Block. Some stripping and mapping on the southern gold shear zone also occurred during this era of exploration.</p> <p><b>VLF and Magnetometer Ground Survey, Normar Property, October 1986 GM43967</b></p> <p>Technical specifications of the geophysical surveys discussed in this announcement are summarised from the technical report of Novamin Resources Inc - the geophysical contractors who undertook the work in 1986: <i>Magnetometer and VLF Survey of Normar Property, 1986 (GM43967)</i>. Magnetometer and VLF Survey of Normar Property, 1986 (GM43967)</p> <p>Magnetometer and very low frequency (VLF) electromagnetic surveys were completed over the Normar Property (Project 2140.24) in the spring and summer of 1986. Objective was to obtain a geophysical data base to guide and assist subsequent geologic/geophysical work. The magnetic and VLF results outline a number of lithologies and present a complex structural setting.</p> <p>A number of VLF zones are tentatively associated with known gold showings. Geologic mapping and compilatory work are recommended before implementation of additional exploratory work. The two survey techniques are reviewed separately below.</p> <p>Very Low Frequency (VLF) Electromagnetic Survey</p> <p>Tabulated below are logistical details concerning the survey.</p> <p>Instrumentation: Geonics EM-16 Crone Radem</p> <p>Transmitter Station: Cutler, Maine, U.S.A.</p> <p>Frequency: 24.0 KHz</p> <p>Line Interval: 100 m</p> <p>Station Interval: 25 m</p> <p>Survey Dates: March 15-21; June 3-5, 15, 24-26, 1986</p> <p>Parameters Read: Dip in percent (%) of the total electromagnetic field perpendicular to the transmitter station.</p> <p>Production: 76.3 line-km / 3087 Rdg.</p> <p>Dip angles generated by the Crone Radem were converted from degrees (°) to a percentage (%) dip, so as to agree with the Geonics EM-16. These dips were then plotted in profile form on a base map at 1:5000 scale and profile scale of 1 cm = 20%. Plotting conventions are completely explained on the map. These dips were then processed with the well-known Fraser filter and the results also plotted on a 1:5000 scale base map. Contouring was then completed with an interval of 20 units. Coupling to Cutler, Maine was about 15° off the optimum of 0°, however, this is quite adequate for energizing any strataform conductors. The field work proceeded smoothly and the data is of utmost quality. However, a buried telephone line along highway 117 produced an extremely robust anomaly which overwhelmed nearby responses. This essentially negates results along its length for a width of about 500 m.</p> <p>Conclusions and Recommendations</p> <p>The magnetic and VLF results outline a number of lithologies and present a complex structural setting. At least three (3) VLF zones (i.e. #1, #2, &amp; #3) are, or appear to be, related to known gold showings. Final verification must await compilation of the previous work on to the present grid. The property should be mapped geologically and all previous work compiled. Once this is available it can be integrated with these geophysical results and an exploration proposal developed.</p> <p>Report author: James L. Wright, Senior Staff Geophysicist, Novamin Resources Inc.</p>

		<p><b>IP Survey, Normar Project, August 1995 GM53815</b></p> <p>In July 1995, ground Induced Polarization (I.P.) surveys was carried out on the NORMAR (5064) property, for BREAKWATER RESOURCES Ltd.</p> <p>The I.P. survey was carried out along previously cut lines oriented at North-South, spaced every 100 meters and chained every 25 meters. The grid is controlled by base line 0+OON and tie line 9+OOS, striking east-west. The I.P. survey was conducted using a dipole-dipole electrode configuration. The dipole dimension was 25 meters and successive separations at multiples of n=1, n=2, n=3, n=4 and n=5 times the dipole dimensions were used, in order to investigate at depth. A total of approximately 9.8 line-km of I.P. data was thus gathered. The I . P . equipment consisted of 1°) a Phoenix IPT-1 transmitter operating at 1.0 Hz, powered by a 2 kiloWatt, Phoenix model MG-2 motor generator. The phase angle (in milliradians) between the transmitted current and the received voltage was measured by 2°) a Phoenix Turbo V-4 phase I.P. receiver, measuring the polarization effect (phase shift) and also the apparent resistivity of the earth at each "n". The phase angle is a direct measure of the polarization of the underlying earth.</p> <p>The Bousquet Property is suited to IP survey as there are limited known conductive lithologies or overburden with the potential to mask IP responses from sulphides and associated gold mineralisation. The survey identified numerous resistivity and chargeability anomalies that were ranked according to prospectivity. A notable chargeability anomaly occurs to the immediate southwest of the Decoeur prospect; however, the anomaly remains open to the west and south of the IP survey boundaries. The IP anomaly has recently been drilled by hole BO-25-39, 50, and 51. The drilling to date has not resolved the source of the IP anomaly, and further drilling will be required.</p>
<p><b>Further Work</b></p>	<p><i>The nature and scale of planned further work.</i></p>	<p>Logging, sampling of the phase 2 2026 drilling program is complete. Assays for BO-26-66 are still pending. The company is consulting with a contractor to conduct a televiwer survey through the Paquin prospect. Additional drilling will be planned pending the results of the survey.</p>

For personal use only