

DD004F EXTENDS KAMEELBURG MINERALISATION NORTHWEST

Highlights

- Aldoro continues to build on the significant scale of the Kameelburg REE-Sr-Nb deposit with the fifth hole (DD004F) from the Phase II drilling program intersecting **354.2 meters of continuous mineralisation** in the northwest direction from the DD004 drill pad.
- DD004F encountered significant mineralisation across multiple zones, with the hole tested to the current collar depth of 354.2m - **the hole did not reach the interpreted deep high-grade REE-Sr core and remains open at depth.**
- Significant intercepts for DD004F include¹:
 - From surface: 57m at 1.85% TREO, 5.56% SrCO₃, 0.16% Nb₂O₅ and 451ppm Mo
 - From 60 meters: 6m at 1.72% TREO, 5.17% SrCO₃, 0.15% Nb₂O₅ and 165ppm Mo
 - From 72 meters: 11m at 1.74% TREO, 5.19% SrCO₃, 0.18% Nb₂O₅ and 219ppm Mo
- Strontium (SrCO₃) is confirmed as a second significant commodity at Kameelburg, **with broad zones of >5% SrCO₃ systematically occurring** in association with elevated TREO in the central carbonatite. **Strontium carbonate (strontianite) is a critical input for permanent magnets and the electronics sector.**
- DD008G has been drilled and will test the interpreted deep mineralisation centre, guided by the grade-depth trend identified in the drillholes drilled off the DD004 pad. A 74m iron-ore zone (avg. 30% Fe) intersected in DD004D also represents a potential co-product.
- The Company is in the process of finalising an updated Mineral Resource report incorporating recently released drill hole assay results, including SrCO₃ and Fe content from Phase 1 drilling. The report is expected to be released within the next two weeks.

Aldoro Resources Ltd (“Aldoro”, “The Company”) (ASX: ARN) is pleased to advise that the assay results for diamond drill hole DD004F (“Assayed Diamond Hole”) have been received and confirm further rich REE and Strontium mineralisation encountered at Kameelburg.

DD004F has seen 354.2 meters of continuous mineralisation intersected at Kameelburg comprising Rare Earth (REE), Strontium (Sr), Niobium (Nb) and Molybdenum (Mo) within the Kameelburg Carbonatite.

DD004F (354.2m, azimuth 310° NW, dip -60°) was drilled from the DD004 pad as a directional companion to DD004E (387.2m, azimuth 40°, “reported 15 April 2026”), designed to test the northwest structural corridor of the Kameelburg carbonatite. The assay results confirm broad zones of REE-Sr-Nb-Mo mineralisation in the northwest limb however the hole was not drilled

deep enough to test the deep part of the mineralisation system. The interpreted high-grade REE-SrCO₃ core identified in DD004D (reported 23 May 2025) at depths of 300m-500m remains a priority target for future deep drilling.

¹ Significant intercepts were derived by adding downhole assays and dividing by the interval to obtain an average for the interval

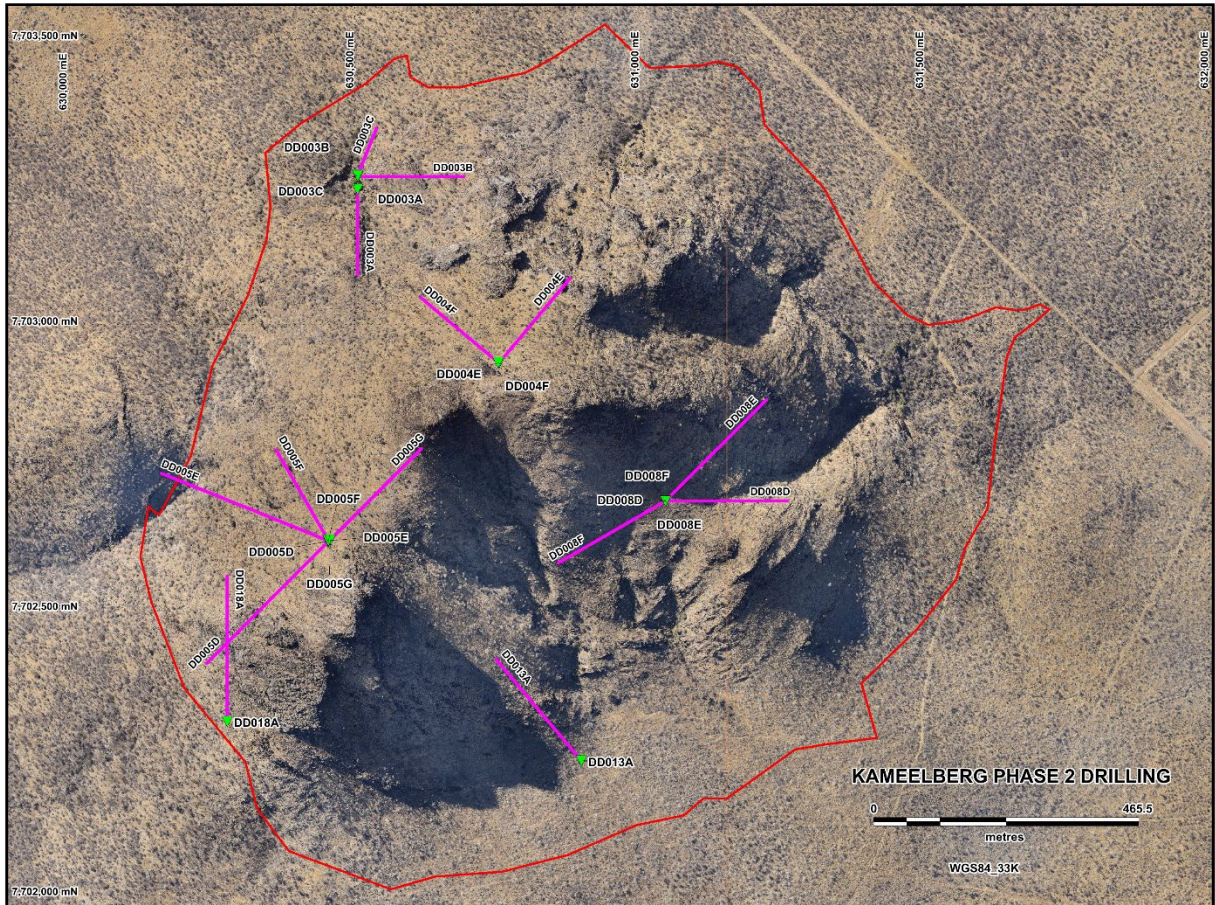


Figure 1: Diamond drill hole plan view of the Phase 2 drilling programme

Diamond Hole Assay – DD004F

Diamond hole assays confirm DD004F intersected REE-Sr-Nb mineralisation across multiple zones from surface to the end of hole at 354.2m. The hole ended in mineralisation and remains open at depth.

Assay grades have been reported using a 1% TREO consistent with prior reporting. The northwest azimuth (310°) of DD004F places it in the beforosite-dominated outer ring of the Kameelburg carbonatite, where iron-rich mafic zones and xenolith contamination characteristically reduce TREO grades relative to the sovite core but sustain elevated Niobium and Molybdenum concentrations. This is consistent with the lithological control on mineralisation described in prior announcements. *Please refer to Appendix 1 for full assay details.*

For personal use only

For personal use only

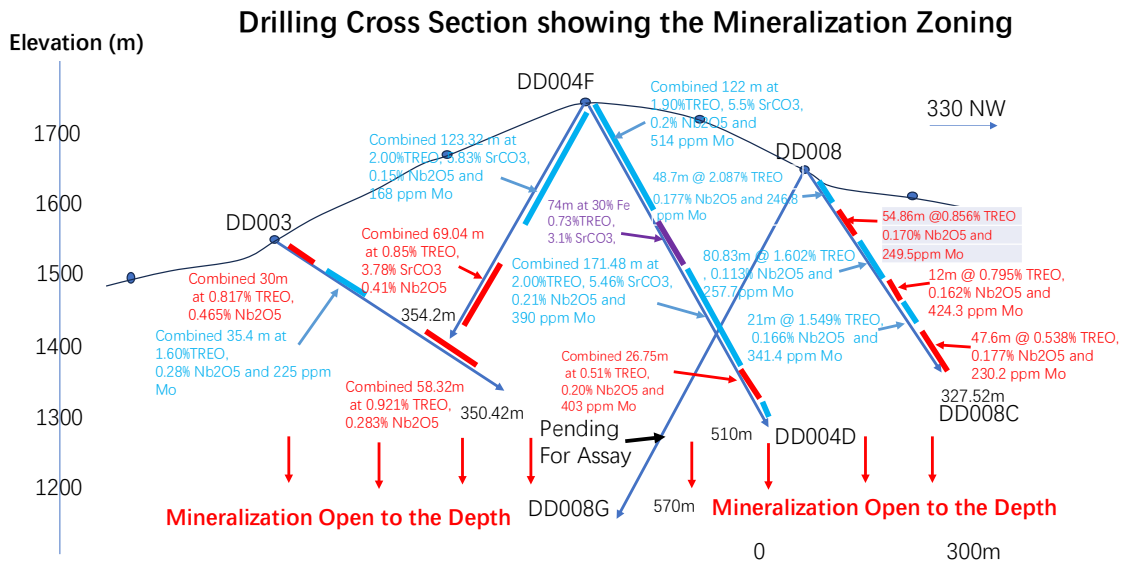


Figure 2: Cross Section (NW direction, 330°) showing mineralisation zoning² across DD004F, DD004D, DD008C and DD008G.

Refer to tables for DD003 in ASX release dated 1/7/25

- DD004D release dated 23/5/25

- DD008C release dated 10/9/25

² down hole mineralisation is a weighted average using a 1%TREO cut-off as mentioned in Section 2 of the JORC table

The mineralisation appears to be controlled by semi massive to massive magnetite zones, crustal contaminations where mafic fragment/xenoliths are significant and incorporated in the Beforsite carbonatite. The major rare earth mineral is Ancylyte.

Drilling Update

The Phase II drilling program has now been completed with 15 holes drilled across 7,190 meters of diamond drilling. Additional assays have arrived in country and are expected to be processed continually throughout April & May.

The Company is now preparing to utilize its Smart 8 drilling rig to commence bulk sampling retrieval from across the Kameelburg carbonatite.

Drill hole DD008G has been drilled and will test the interpreted deep mineralisation centre identified by the grade-depth trend identified from holes drilled off the DD004 pad. A 74m iron-ore zone (avg. 30% Fe) intersected in DD004D also represents a potential co-product.

A summary of drilling to date is as follows:

No.	Borehole ID	UTM Zone	Easting	Northing	Elevation (m)	Azimuth	Dip (degrees)	Drilled Depth (m)	Assay Status	Location	Planned depth (m)
1	DD003A	33K	630505	7703237	1,454	180	-60	300.2	Awaiting	DD003 Pad	600
2	DD003B	33K	630506	7703259	1,530	90	-65	438.9	Awaiting	DD003 Pad	500
3	DD003C	33K	630505	7703261	1,528	22	-65	214.7	Awaiting	DD003 Pad	500
4	DD004E	33K	630754	7702933	1,742	40	-60	387.2	Received	DD004 Pad	750
5	DD004F	33K	630752	7702933	1,740	310	-60	354.2	Received	DD004 Pad	750
6	DD005D	33K	630454	7702620	1,703	225	-60	604.4	Awaiting	DD005 Pad	650
7	DD005E	33K	630453	7702621	1,705	292	-60	629.9	Received	DD005 Pad	750
8	DD005F	33K	630454	7702621	1,702	330	-65	434.9	Received	DD005 Pad	700
9	DD005G	33K	630457	7702622	1,705	45	-65	537.7	Received	DD005 Pad	700
10	DD008D	33K	631046	7702691	1,643	90	-65	503.9	Awaiting	DD008 Pad	600
11	DD008E	33K	631046	7702691	1,643	45	-60	500.9	Awaiting	DD008 Pad	600
12	DD008F	33K	631046	7702691	1,643	240	-60	556	Awaiting	DD008 Pad	600
13	DD008G	33K	631046	7702691	1,643	330	-60	573.5	Awaiting	DD008 Pad	650
14	DD013A	33K	630898	7702235	1,536	320	-65	550.5	Awaiting	DD013 Pad	600
15	DD018A	33K	630276	7702304	1,614	360	-65	603.1	Awaiting	DP002 Pad	560
Total								7190.0			

Table 1: Completed Phase 2 drilling summary.

Authorised for and on behalf of the Board,

Sarah Smith
Company Secretary

About Aldoro Resources

Aldoro Resources Ltd is an ASX-listed (**ASX: ARN**) mineral exploration and development company. Aldoro has a portfolio of critical minerals including rare earth, lithium, rubidium and base metal projects. The Company's suite of projects include the Kameelburg REE & Niobium Project in Namibia, the Niobe lithium-rubidium-tantalum project and the Narndee Igneous Complex project in Western Australia.

Disclaimer

Some of the statements appearing in this announcement may be in the nature of forward-looking statements. You should be aware that such statements are only predictions and are subject to inherent risks and uncertainties. Those risks and uncertainties include factors and risks specific to the industries in which Aldoro operates and proposes to operate as well as general economic conditions, prevailing exchange rates and interest rates and conditions in the financial markets, among other things. Actual events or results may differ materially from the events or results expressed or implied in any forward-looking statement. No forward-looking statement is a guarantee or representation as to future performance or any other future matters, which will be influenced by a number of factors and subject to various uncertainties and contingencies, many of which will be outside Aldoro's control.

Aldoro does not undertake any obligation to update publicly or release any revisions to these forward-looking statements to reflect events or circumstances after today's date or to reflect the occurrence of unanticipated events. No representation or warranty, express or implied, is made as to the fairness, accuracy, completeness or correctness of the information, opinions or conclusions contained in this announcement. To the maximum extent permitted by law, none of Aldoro, its Directors, employees, advisors or agents, nor any other person, accepts any liability for any loss arising from the use of the information contained in this announcement. You are cautioned not to place undue reliance on any forward-looking statement. The forward-

For personal use only

looking statements in this announcement reflect views held only as of the date of this announcement.

This announcement is not an offer, invitation or recommendation to subscribe for or purchase securities by Aldoro. Nor does this announcement constitute investment or financial product advice (nor tax, accounting or legal advice) and is not intended to be used for the basis of making an investment decision. Investors should obtain their own advice before making any investment decision.

Competent Person Statement

The information in this announcement that relates to Exploration Results and other technical information is based on information compiled by Dr Minlu Fu (a non-executive director of the Company) and complies with the 2012 Edition of the Australasian Code for Reporting of Exploration Results, Mineral Resources and Ore Reserves (JORC Code). It has been reviewed by Mr Jeremy Clark and Mr Mark Mitchell.

Mr. Mark Mitchell is a Member of the Australasian Institute of Geoscientists (AIG). Mr Mitchell is an independent consultant and not an employee of Aldoro and has sufficient experience that is relevant to the style of mineralisation and type of deposit under consideration and to the activity being undertaken to qualify as a Competent Person as defined in the 2012 Edition of the JORC Code. Mr Mitchell consents to the inclusion in this announcement of the matters based on his information in the form and context in which it appears.

In relying on the above mentioned ASX announcements and pursuant to ASX Listing Rule 5.23.2, the Company confirms that it is not aware of any new information or data that materially affects the information included in the above-mentioned announcements, and in the case of estimates of mineral resources, all material assumptions and technical parameters underpinning the estimates in the relevant market announcements continue to apply and have not materially changed.

For personal use only

Appendix 1: Down hole assays – Lanthanides, Yttrium, Niobium, Molybdenum and Strontium

Drill Collar DD004F (Dominant Mineralisation highlighted **REE Nb**)

Hole ID	Sample No	Depth_From (m)	Depth_To (m)	Ce ppm	Dy ppm	Er ppm	Eu ppm	Gd ppm	Ho ppm	La ppm	Lu ppm	Nd ppm	Pr ppm	Sm ppm	Tb ppm	Tm ppm	Y ppm	Yb ppm	Nb ppm	Mo ppm	Sr ppm	TREO%	Nb205%	NdPr%	SrCO3 %
DD004F	DD004F-001	0	2	8042.2	32.1	9.1	45.1	94.4	4.3	5705.8	0.6	1850.8	676.8	191.1	8.3	1	108.3	5.2	607	74	36090	1.96	0.09	15.02%	6.08
DD004F	DD004F-002	2	3	10314.5	30	7.6	53.7	111.5	3.8	7855.9	0.5	2275.7	843.3	229.7	9.8	0.8	87	4	280	31	48190	2.56	0.04	14.24%	8.12
DD004F	DD004F-003	3	4	10628.1	32.6	8.3	51.2	106.5	4	7956.2	0.5	2231.4	848.7	217.6	9.4	0.7	97.3	4.1	202	90	52240	2.60	0.03	13.83%	8.80
DD004F	DD004F-004	4	5	11482.8	48	11.2	63.7	139	5.9	8375.5	0.7	2396.4	921.7	249.2	13.2	1	132.1	5.5	648	193	45580	2.79	0.09	13.87%	7.68
DD004F	DD004F-005	5	6	8876	38.8	11.6	46.9	100.2	5.5	6415.7	0.7	1956.5	737.6	198.4	10.1	1.2	134.3	5.5	1460	315	37640	2.17	0.21	14.48%	5.86
DD004F	DD004F-006	6	7	3996.5	76	30	35	90.5	13.2	2636.9	2.3	1027.3	359.4	125.7	13.1	3.5	346.4	18.8	1187	210	20960	1.03	0.17	15.71%	3.53
DD004F	DD004F-007	7	8	4190.1	71.3	31.6	31.1	85.6	13.3	2825.2	2.6	1035.6	365	116.3	12.6	3.8	360.5	21.4	1187	300	19170	1.08	0.17	15.19%	3.23
DD004F	DD004F-008	8	9	9681.1	51.7	14.5	47.1	106.5	7.1	7355	0.9	1972.3	763.5	195.4	12.2	1.6	177	7.7	1780	597	46860	2.39	0.25	13.37%	7.90
DD004F	DD004F-009	9	10	5569.7	32.6	9.9	30.9	67.5	4.5	3999.5	0.7	1252.6	472.8	126.5	7.6	1	120.6	5.6	1920	584	17740	1.37	0.27	14.69%	2.99
DD004F	DD004F-010	10	11	5910.3	46.9	15	36.3	83	6.9	3865.4	1.1	1429.1	523.6	153.1	10.2	1.7	156.4	8.7	3088	1486	25300	1.44	0.44	15.88%	4.26
DD004F	DD004F-011	11	12	6197.9	41.3	13.3	38.1	84.7	6.4	4009.1	0.9	1488.5	543.3	161.6	9.2	1.4	149.8	7.4	1716	717	32780	1.49	0.25	15.87%	5.52
DD004F	DD004F-013	12	13	6126.2	37.6	10.7	40	87.3	5.1	3831.8	0.7	1561.2	551	169.7	9	1.1	123.1	5.9	1199	669	23920	1.47	0.17	16.76%	4.03
DD004F	DD004F-014	13	14	6934.6	34.9	9.6	46.2	95.6	4.8	4520.5	0.7	1795.1	629.5	198.7	9.2	1.1	124.3	6	1365	767	35890	1.69	0.20	16.77%	6.05
DD004F	DD004F-015	14	15	8184.7	36.3	10.5	48.4	102.2	4.8	5606.2	0.8	2001.6	717.8	209	9.7	1.1	120.6	6.3	1561	821	39630	2.00	0.22	15.89%	6.68
DD004F	DD004F-016	15	16	8511.8	42	12.3	50.2	106.7	6.1	6109.5	0.8	1990	728.8	213.1	10.9	1.3	150.1	6.9	1105	436	43910	2.10	0.16	15.70%	7.40
DD004F	DD004F-017	16	17	9578.3	42.8	10.1	56	118.2	5.4	6660.6	0.7	2239.2	821.7	236.6	11.3	1.1	128.7	5.6	1508	623	44440	2.33	0.22	15.32%	7.49
DD004F	DD004F-018	17	18	8811.9	24.3	5.7	45.4	87.7	2.9	5201.8	0.4	2205.7	799.5	204.3	7.3	0	65.8	3	1469	832	35910	2.05	0.21	17.15%	6.05
DD004F	DD004F-019	18	19	7347.7	32.2	8.2	42.6	87	4.2	4266.9	0.5	1957.8	692	193.8	8.3	0.8	96.5	4.2	1311	1327	40390	1.73	0.19	17.92%	6.81
DD004F	DD004F-020	19	20	8039.3	40.1	11.5	46.7	97.1	5.4	4789	0.8	2072.3	739.9	211.2	9.8	1.2	136.2	6.4	1502	474	55780	1.90	0.21	17.29%	9.40
DD004F	DD004F-022	20	21	6542.7	39.7	12.7	37.8	82.5	6	4118.5	1	1584.4	581.9	161.9	9	1.4	151.1	8	1439	764	30620	1.56	0.21	16.18%	5.16
DD004F	DD004F-023	21	22	8000.1	39.3	11.9	38.8	83.3	5.7	6012	0.8	1717	649.8	171.8	8.9	1.3	143.1	6.9	634	179	43320	1.98	0.09	13.96%	8.31
DD004F	DD004F-024	22	23	6669.6	35.9	11.6	34.9	76	5.6	4306.5	0.9	1547.7	579.1	152.3	8.2	1.3	136.8	7.1	839	442	38880	1.59	0.12	16.74%	6.55
DD004F	DD004F-025	23	24	10264.5	37.7	12.5	43.2	90.5	5.7	8452.9	0.8	2008.9	791.7	194.3	8.9	1.3	140.6	6.6	421	78	50190	2.58	0.06	12.65%	8.46
DD004F	DD004F-027	24	25	7340.3	31.3	8.2	40	80.2	4.1	4784.7	0.5	1677.6	642	175.2	8.1	0.8	95.6	4.2	729	281	21950	1.75	0.10	16.03%	3.70
DD004F	DD004F-028	25	26	3131.6	14.7	4.2	17.9	38.1	2.1	1813.3	0.3	806.6	290.2	80	3.5	0	48.7	2.6	673	445	13760	0.73	0.10	17.48%	2.32
DD004F	DD004F-029	26	27	5216.8	22	6.1	29.9	58.4	2.9	3010.8	0.5	1432.1	494.4	147.1	5.6	0.6	70.4	4.1	979	644	16510	1.23	0.14	18.29%	2.78
DD004F	DD004F-031	27	28	6974.1	32.9	10.6	40.5	85	4.7	4419.2	0.8	1744.2	624.4	178	8.2	1.1	122.7	6.3	501	206	39220	1.67	0.07	16.56%	6.61
DD004F	DD004F-032	28	29	5601.1	26.2	9.9	34.1	72.6	3.8	3099	0.9	1534.6	534.1	152.6	6.5	1.2	105	7.4	592	230	27220	1.31	0.08	18.43%	4.59
DD004F	DD004F-033	29	30	5583.9	36.5	10.6	41.4	87.6	4.9	2752.6	0.8	1631.3	563.4	189.2	8.6	1.2	123.1	6.5	1044	238	23950	1.30	0.15	16.24%	4.04
DD004F	DD004F-034	30	31	6164	35.8	10.3	42.4	86.7	5	3452.2	0.8	1749.4	594.7	189.1	8.6	1.1	123.6	6.3	776	436	34220	1.46	0.11	18.73%	5.77
DD004F	DD004F-035	31	32	6967.1	45.6	14.6	46.2	99	6.8	4352.8	1	1779.2	627.9	195	10.5	1.6	169.9	8.5	1144	628	25050	1.68	0.16	17.84%	4.22
DD004F	DD004F-036	32	33	7065.6	41.7	13.5	44.9	95.3	6.1	4260.9	0.9	1836.9	649.4	189.6	9.8	1.5	153.1	7.7	940	605	29770	1.68	0.13	17.23%	5.02
DD004F	DD004F-037	33	34	7526.8	47.2	14.9	44.1	99.8	7	4821.9	1.1	1770.6	654.3	183.3	10.5	1.7	174.9	9.1	1412	639	26890	1.80	0.20	15.72%	4.53
DD004F	DD004F-038	34	35	8587.1	46.4	14.6	52.7	111.7	6.6	5323.3	1	2141.6	769.3	228.5	11.1	1.6	169.7	8.5	800	558	38340	2.05	0.11	16.60%	6.46
DD004F	DD004F-040	35	36	7317.7	43	14.4	46.3	99.5	6.5	4627.4	1.1	1791.6	648.7	193	10.2	1.6	160.8	9	1856	1316	24850	1.75	0.27	16.24%	4.19
DD004F	DD004F-041	36	37	6230.5	39	13.4	41.3	87.5	6.2	3816.9	1.1	1951.4	567.5	173.3	9.1	1.5	151.2	8.8	1547	1005	22840	1.49	0.22	16.88%	3.85
DD004F	DD004F-042	37	38	8055.2	45.3	14.4	51.1	107.6	6.6	4879	1	2040	730.2	216.2	10.7	1.7	164.5	8.5	2143	1368	30930	1.91	0.31	16.90%	5.21
DD004F	DD004F-043	38	39	6343.8	35.1	11.5	44.2	92.7	5.3	3653.6	0.9	1768.8	606.1	190.2	8.6	1.3	128.5	7.2	1416	801	26100	1.51	0.20	18.31%	4.40
DD004F	DD004F-044	39	40	4169.1	23.1	7.5	28.2	55.5	3.6	2046.1	0.6	1316.4	438.7	134.8	5.4	0.7	84.9	4.5	245	224	24800	0.97	0.04	21.03%	4.18
DD004F	DD004F-045	40	41	6028.1	36.6	12.8	35.6	78.4	5.7	3670.2	1	1567.1	556.1	156.3	8	1.4	148.2	8.6	1123	414	28840	1.44	0.16	17.18%	4.86
DD004F	DD004F-046	41	42	5975.2	41.5	14.4	39.8	86.3	6.2	3783.6	1.1	1531.6	541.6	160.6	9.5	1.6	166.7	8.7	1053	446	28870	1.45	0.15	16.70%	4.02
DD004F	DD004F-047	42	43	7284.5	44.9	15.2	44.2	99.7	6.8	4903.9	1.1	1753.5	636.8	189.4	10.4	1.6	171.5	9	1391	609	26970	1.78	0.20	15.70%	4.54
DD004F	DD004F-048	43	44	7180.7	44.9	14.6	43.1	95.3	6.9	4808.1	1.1	1703.7	620.8	182.4	10.2	1.7	173.6	8.7	1569	440	33740	1.75	0.22	15.55%	5.68
DD004F	DD004F-049	44	45	6186.3	35.2	11.2	42.6	86.8	5.2	3835.4	0.8	1676.5	582.1	183.7	8.5	1.2	122.9	6.6	1023	505	21050	1.50	0.15	17.61%	3.55
DD004F	DD004F-050	45	46	4840.7	25.7	7.6	37.3	73.2	3.4	2925.9	0.5	1405.7	470	162.2	6.6	0.7	83.2	4	632	338	15730	1.18	0.09	18.61%	2.65
DD004F	DD004F-051	46	47	9295.7	53.7	16.8	55.9	122	8.1	6866	1.2	2185.7	786.1	241.4	12.9	1.9	200.9	10.1	1139	204	47810	2.33	0.16	14.91%	8.06
DD004F	DD004F-053	47	48	9459.9	52.8	16.3	51.4	114.5	7.4	7348.1	1.2	2063.5	769	218.5	11.9	1.8	189.6	9.6	1086	29	45290	2.38	0.16	13.98%	7.63
DD004F	DD004F-054	48	49	8822.9	49.9	10.8	48.3	95.9	4.9	6371	0.8	2022.1	759.1	216.9	8.8	1.2	120.4	6.2	654	248	30139	2.19	0.09	15.23%	5.08
DD004F	DD004F-055	49	50	9633.5	33.3	10	44.5	90	4.6	7541.3	0.7	2011.3	762.2	190.6	8.7	1	108.3	6	732	148	29588	2.40	0.10	13.52%	4.99
DD004F	DD004F-056	50	5																						

For personal use only

Hole_ID	Sample No	Depth_From (m)	Depth_To (m)	Ce ppm	Dy ppm	Er ppm	Eu ppm	Gd ppm	Ho ppm	La ppm	Lu ppm	Nd ppm	Pr ppm	Sm ppm	Tb ppm	Tm ppm	Y ppm	Yb ppm	Nb ppm	Mo ppm	Sr ppm	TReO%	Nb2O5%	NdPr%	SrCo3 %
DD004F	DD004F-099	89	90	1335.8	35.4	12.3	18.7	49.6	6	785.6	1	409.9	128.2	63.2	6.9	1.4	148.6	8.3	638	133	8469	0.35	0.09	17.76%	1.43
DD004F	DD004F-100	90	91	1309.2	25	7.5	14.2	41.5	3.8	779.2	0.6	361.9	119.8	52.4	5.2	0.9	97.9	5.1	809	75	6105	0.33	0.12	16.97%	1.03
DD004F	DD004F-102	91	92	1630	24.6	8.5	15.2	40.4	4.1	1066.9	0.7	428.3	141.2	55.9	5.2	1.1	100.7	5.6	910	56	7000	0.41	0.13	16.06%	1.18
DD004F	DD004F-103	92	93	6353.2	39.9	13.5	31.3	74.8	6.3	5432	1.1	1212.5	477.5	121.5	9.1	1.7	164.9	9.4	1500	168	21410	1.63	0.21	12.07%	3.61
DD004F	DD004F-104	93	94	2246.3	37.9	12.5	20.4	52.4	5.7	1424.6	1	623.1	201.6	77.2	7.3	1.5	158.2	8.4	689	96	8565	0.57	0.10	16.82%	1.44
DD004F	DD004F-105	94	95	526.3	41	30.3	9.8	30	10.3	301.7	2.8	187.7	53.1	32.5	5.3	4.1	281.2	22.7	188	19	2953	0.18	0.03	15.40%	0.50
DD004F	DD004F-107	95	96	470	25.4	15	7.7	23.1	5.5	270	1.6	169.2	47.9	26.4	3.7	2.2	148.2	12.8	186	28	3031	0.15	0.03	17.47%	0.51
DD004F	DD004F-108	96	97	345.7	11.8	5.8	6.8	18.1	2.2	176.8	0.9	139.2	38	23.7	2.2	1	58.8	7.3	119	46	1918	0.10	0.02	20.99%	0.32
DD004F	DD004F-109	97	98	323	10.4	4.4	5.8	15	1.7	169.1	0.5	130.2	35.2	20.1	2	0.6	45.3	4.4	137	8	2227	0.09	0.02	21.41%	0.38
DD004F	DD004F-111	98	99	375.4	9.5	4.6	5.7	14.5	1.7	212	0.7	132.8	39.2	20.8	1.8	0.7	46.5	5.8	121	9	2201	0.10	0.02	19.61%	0.37
DD004F	DD004F-112	99	100	414	14.4	7.7	7.5	19.4	2.7	227.1	1.1	152.8	43.7	26.3	2.5	1.2	73.5	8.8	146	38	2400	0.12	0.02	19.45%	0.40
DD004F	DD004F-113	100	101	358.8	8.8	3.6	5.6	13.5	1.4	197.9	0.6	133.9	36.9	18.2	1.7	0.6	38.2	4.8	203	18	2015	0.10	0.03	20.60%	0.34
DD004F	DD004F-114	101	102	390.6	11.2	5.5	6.6	17.5	2	204.4	0.8	144.5	41.1	24.5	2.3	0.8	55.5	6.4	204	28	2276	0.11	0.03	20.18%	0.38
DD004F	DD004F-115	102	103	453.1	15.5	6.8	8.5	22.8	2.6	233.5	0.8	169.3	48	28.4	2.9	1	74.8	6.5	440	25	2407	0.13	0.06	20.08%	0.41
DD004F	DD004F-116	103	104	802.4	15.9	7.1	9.8	24.2	2.8	465.5	0.8	254	79.8	34.3	3	1	74.8	6.2	627	29	3583	0.21	0.09	18.63%	0.60
DD004F	DD004F-117	104	105	574.8	13.6	6.5	9	21.8	2.5	326	0.8	200.4	59.8	32.1	2.7	0.9	64.7	6.5	792	42	2607	0.16	0.11	19.56%	0.44
DD004F	DD004F-118	105	106	1144.6	13.2	5.6	10.4	24.2	2.2	646.1	0.7	340	108.4	43.5	2.7	0.8	60.2	6.1	1051	64	7442	0.28	0.15	18.53%	1.25
DD004F	DD004F-120	106	107	981.6	14.7	6.1	10.4	25	2.4	568.4	0.6	294.1	91.5	38.3	2.8	0.8	64	5.3	946	80	4763	0.25	0.14	18.22%	0.80
DD004F	DD004F-121	107	108	738.3	20	8.7	9.7	25.2	3.6	476.5	0.8	227	70.1	34.7	3.5	1.2	96.5	6.4	402	20	3520	0.20	0.06	17.14%	0.59
DD004F	DD004F-122	108	109	508.6	47.7	29.1	10.1	32.9	11.2	320.8	2.3	173.2	49.9	30.5	6.3	3.7	293.3	19.2	234	23	5488	0.18	0.03	14.26%	0.92
DD004F	DD004F-123	109	110.3	1408.4	19.1	7.6	12.7	30.3	3.4	871.2	0.6	386.4	126.2	48.7	3.6	0.9	89.1	5.2	570	64	4615	0.35	0.08	19.93%	0.78
DD004F	DD004F-124	110.3	111	4400.3	60	22.3	44.3	101.4	10	2638.5	1.7	1389.2	437.1	174.9	11.9	2.6	258.4	14.1	1361	36	28170	1.12	0.19	19.00%	4.75
DD004F	DD004F-125	111	112.12	4750.5	52.6	21.2	42.9	95.4	8.7	2952.4	1.7	1420.9	451.3	175.7	10.6	2.5	233.2	14	772	11	23510	1.20	0.11	18.22%	3.96
DD004F	DD004F-126	112.12	113	772.7	15.3	6.5	8.8	22.2	2.7	441.7	0.6	253.8	78.1	35.5	2.7	0.9	71.3	5.1	353	47	6318	0.20	0.05	19.21%	1.06
DD004F	DD004F-127	113	114	874.4	13.2	4.4	9.5	22.7	2	548.8	0.4	249.6	80.1	34.4	2.6	0.5	53.7	3.4	640	132	4907	0.22	0.09	17.27%	0.83
DD004F	DD004F-128	114	115	873.2	12.6	5	10	24.6	2.1	509.6	0.4	272.4	84.5	38.7	2.7	0.6	58.8	3.3	769	51	5539	0.22	0.11	18.71%	0.93
DD004F	DD004F-129	115	116	551.7	12.7	6	7.1	18.8	2.4	327.2	0.8	176.4	55	26.5	2.3	1	63.7	6.6	280	20	3821	0.15	0.04	18.28%	0.64
DD004F	DD004F-130	116	117	748.5	10.1	4.5	8.2	18.8	1.8	450.5	0.6	231.9	73.6	32.8	2.1	0.7	50.6	4.8	456	20	3672	0.19	0.07	18.54%	0.62
DD004F	DD004F-131	117	118	589	14.1	8.3	7.6	19.4	2.9	391.7	1	200.3	61.7	29.2	2.5	1.2	78.1	7.8	519	32	3559	0.17	0.07	18.40%	0.60
DD004F	DD004F-132	118	119	1302.4	15	5	13.6	31.5	2.1	814.2	0.6	373.2	120.7	53.4	3.4	0.6	56.2	5	650	112	6484	0.33	0.09	17.59%	1.09
DD004F	DD004F-134	119	120	1029.1	17.4	6.6	12.5	29.9	2.9	592.5	0.8	318.6	98.2	46.7	3.4	0.9	75.2	6.9	768	65	5202	0.26	0.11	18.50%	0.88
DD004F	DD004F-135	120	121	619.7	11.3	4.4	7.9	18.8	1.8	371.2	0.7	204.5	62.2	29.2	2.2	0.7	48.3	5.5	554	28	3733	0.16	0.08	19.11%	0.63
DD004F	DD004F-136	121	122	568.6	9.8	3.8	6.8	17.2	1.6	356	0.6	183.7	56.3	27	2	0.6	41.5	4.7	525	58	3400	0.15	0.08	18.66%	0.57
DD004F	DD004F-137	122	123	561.5	9.4	4.1	6.8	17	1.7	342.3	0.8	178.8	56.1	27.6	2.1	0.7	43.4	6.3	486	33	3814	0.15	0.07	18.57%	0.64
DD004F	DD004F-138	123	124	591.8	10.7	4.3	7.1	17.9	1.8	358	0.8	195.7	59	28	2.2	0.7	46.9	6.2	539	39	3817	0.16	0.08	19.04%	0.65
DD004F	DD004F-139	124	125	419.3	7.4	3.2	5.8	13.3	1.2	264.5	0.5	149	44	20.3	1.5	0	32.7	4.1	359	30	2700	0.11	0.05	19.86%	0.45
DD004F	DD004F-140	125	126	421.3	9.3	3.8	7.2	17.2	1.6	237.3	0.4	161.5	45.7	26.2	2	0.6	41.5	3.6	332	61	3033	0.11	0.05	21.05%	0.51
DD004F	DD004F-141	126	127	1567.5	24.8	8.1	19.3	46.2	3.7	839.1	0.7	504	152.3	74.9	5.2	1	98.2	5.7	910	45	8296	0.39	0.13	19.50%	1.40
DD004F	DD004F-142	127	128	1174.5	17.3	5.7	13.4	32.2	2.5	701.5	0.5	345.8	108.8	50	3.7	0.7	68.6	4.2	816	87	5180	0.30	0.12	17.89%	0.87
DD004F	DD004F-143	128	129	581.5	10.6	4.7	5.8	15	1.8	411.1	0.5	170.7	55.5	23	2	0.6	50.9	4.2	698	74	2833	0.16	0.10	18.61%	0.48
DD004F	DD004F-144	129	130	888.5	9.9	4.7	6.4	14.9	1.9	707.8	0.6	217.9	79.7	24.4	1.8	0.7	49.4	4.5	619	58	3107	0.24	0.09	14.64%	0.52
DD004F	DD004F-145	130	131.31	1227.1	8.9	3.4	6.2	13.6	1.5	846.1	0.3	261.3	96.9	27.4	1.9	0	39.7	2.8	711	32	4553	0.30	0.10	14.06%	0.77
DD004F	DD004F-147	131.31	132	1156.4	43.3	17.8	19.2	52.2	7.5	559.4	1.5	421.4	121.4	67.3	7.4	2.2	203.8	12.2	1228	16	8424	0.32	0.18	20.00%	1.42
DD004F	DD004F-148	132	133	3981.7	51.8	18.4	40.8	84.2	8.4	2295.5	1.5	1273.7	393.7	159.6	10.6	2.1	215.2	12.5	990	120	23160	1.00	0.14	19.40%	3.90
DD004F	DD004F-149	133	134	3518.2	55.7	21.6	43.9	100.2	9	1944.4	2	1233.1	366	168.7	11.1	2.8	240.4	16.2	742	33	24410	0.91	0.11	20.58%	4.11
DD004F	DD004F-151	134	135	1675.6	17.4	7.1	13.9	33	2.9	889.3	0.7	524.4	163.3	62.3	3.6	0.9	74.6	5.9	324	53	7143	0.41	0.05	19.71%	1.20
DD004F	DD004F-152	135	136	418.9	13.6	6.5	8	20	2.5	183.5	0.7	193.4	50.4	32.6	2.5	0.9	68.3	6	175	18	4326	0.12	0.03	24.09%	0.73
DD004F	DD004F-153	136	137	395.3	15.3	7.4	7.2	19.7	2.8	211.8	1	153	42.8	25.8	2.6	1.2	79.6	8.4	290	16	3960	0.11	0.04	19.94%	0.60
DD004F	DD004F-154	137	138	843.8	27.2	13.8	11.7	31.8	5.2	501.9	1.8	281.8	85.4	41.9	4.4	2	145.1	14.9	370	26	8811	0.24	0.05	18.10%	1.48
DD004F	DD004F-155	138	139	1396.4	24.6	9.4	16.9	41.1	3.9	750	1	458.5	136.4	67.1	5	1.4	103.9	8.3	530	63	6045	0.35	0.08	19.58%	1.02
DD004F	DD004F-156	139	140	670.8	16.5	8	9.7	25.1	3	355	0.8	258	72	39.5	3.1	1.1	83.7	6.7	379						

Hole_ID	Sample No	Depth_From (m)	Depth_To (m)	Ce ppm	Dy ppm	Er ppm	Eu ppm	Gd ppm	Ho ppm	La ppm	Lu ppm	Nd ppm	Pr ppm	Sm ppm	Tb ppm	Tm ppm	Y ppm	Yb ppm	Nb ppm	Mo ppm	Sr ppm	TReO%	Nb2O5%	NdPr%	SrCO3 %
DD004F	DD004F-202	179	180	2330.3	37.3	12.8	33.8	76.5	6	1169.1	1	902.3	246.7	129.3	8.8	1.5	142.2	7.8	709	15	21465	0.60	0.10	22.41%	3.62
DD004F	DD004F-203	180	181	967.3	17.2	7.1	12.2	31	2.8	542.5	0.9	327.2	95.8	46.6	3.7	1	74.1	6.6	587	58	6292	0.25	0.08	19.71%	1.06
DD004F	DD004F-204	181	182	1042.2	17	7.4	11.8	30.8	2.8	600.2	0.8	339.7	98.4	45.7	3.5	1	77.7	6.1	623	81	20525	0.27	0.09	19.08%	3.46
DD004F	DD004F-205	182	183	1085.5	14.7	6.2	11.7	28.2	2.4	619.2	0.7	333.1	102.4	44.4	3.3	0.8	60.6	5.5	521	54	4648	0.27	0.07	18.70%	0.78
DD004F	DD004F-206	183	184	610.7	16.5	8.5	8.5	23	3	377.3	1.4	201.1	60.9	29.1	2.9	1.4	81.2	10.4	341	52	3871	0.17	0.05	18.13%	0.65
DD004F	DD004F-207	184	185	550.4	18.3	9	10.2	27.8	3.6	316.6	1.4	207.8	56.5	34.2	3.6	1.5	91.5	10.6	361	33	10122	0.16	0.05	19.54%	1.71
DD004F	DD004F-208	185	186	1601.6	30.9	13.1	23.3	55.6	5.4	811.3	1.4	597	167	84.4	6.4	1.8	135.7	10.6	427	43	15558	0.42	0.06	21.44%	2.62
DD004F	DD004F-209	186	187	625.5	18.2	9.1	9.4	23.6	3.7	349.5	0.7	233	65.1	33.7	3.2	1.1	93.7	5.2	250	5	2178	0.17	0.04	20.07%	0.37
DD004F	DD004F-210	187	188	748.5	27.9	11.9	11.3	34.2	5.1	436.9	1.1	264.9	76.4	40.4	4.9	1.3	132.5	8	418	39	4375	0.21	0.06	18.76%	0.74
DD004F	DD004F-211	188	189	621	22.8	8.2	9.6	31	3.7	378.4	0.6	203.5	61	31.4	4.3	0.9	97.5	4.5	415	46	2794	0.17	0.06	17.76%	0.47
DD004F	DD004F-213	189	190	474.3	10.1	5.7	4.6	12.8	2	287.2	0.5	143.4	46	17.2	1.7	0.8	54.6	3.6	719	24	2805	0.13	0.10	17.68%	0.47
DD004F	DD004F-214	190	191	641.5	20.4	11	6	17	4.5	407.9	0.6	182	59.1	20.3	2.9	1.1	109.7	4.2	648	18	2624	0.18	0.09	16.07%	0.44
DD004F	DD004F-215	191	192	755.1	20.3	8.7	6.4	19.8	3.9	496.7	0.4	203.3	69.2	24.3	3	0.9	96.4	3.1	584	411	2523	0.20	0.08	15.81%	0.43
DD004F	DD004F-216	192	193	1009.6	20.1	8.9	7.6	21.3	3.8	642.3	0.4	251.7	86.7	27.9	3.2	0.9	96.6	3.1	565	84	2653	0.26	0.08	15.40%	0.45
DD004F	DD004F-217	193	194	697.4	11.7	6.5	5.3	14.5	2.5	453.5	0.4	187.7	63	20.6	1.9	0.7	62.5	2.9	647	21	3138	0.18	0.09	16.28%	0.53
DD004F	DD004F-218	194	195	909.6	21.6	9.2	13.6	34.8	3.7	477.9	0.8	319.5	91.5	46.1	4.4	1.1	95	5.9	1159	31	5587	0.24	0.17	20.08%	0.94
DD004F	DD004F-219	195	196	1415.3	33.2	11.3	22.8	58.2	5.1	723.3	0.8	500.9	142.9	76.8	7.2	1.3	126.2	6.5	803	43	5036	0.37	0.11	20.46%	0.85
DD004F	DD004F-220	196	197	419	10.9	4.1	4.8	14.9	1.8	244.1	0.3	121.2	40.3	15.9	2.1	0.5	44.4	2.6	576	62	2757	0.11	0.08	17.32%	0.46
DD004F	DD004F-221	197	198	2166	19.6	6.5	16.3	38.3	2.9	1307	0.5	623.4	200.1	168.6	4.2	0.7	72.7	3.7	609	362	7388	0.53	0.09	18.11%	1.32
DD004F	DD004F-222	198	199	741.6	10.5	4	8.6	20.7	1.7	500.5	0.3	274.2	86.6	33.8	2.3	0	41.6	2.6	294	650	6941	0.20	0.04	20.78%	1.17
DD004F	DD004F-223	199	200	1601.1	17.4	5.6	15.9	37.7	2.8	960.3	0.4	530.4	166.6	61.8	4.2	0.6	64	3.2	379	449	5646	0.41	0.05	20.00%	0.95
DD004F	DD004F-224	200	201	1242.9	12	4	9.7	23.3	1.9	692.4	0.3	360.7	117.1	39.9	2.8	0	46.8	2.4	695	784	5908	0.30	0.10	18.62%	1.00
DD004F	DD004F-225	201	202	513.9	9.8	3.6	5.7	15.5	1.5	278	0.3	174.6	52.8	22.4	2	0	39	2.5	820	507	3070	0.13	0.12	20.17%	0.52
DD004F	DD004F-227	202	203	542.6	8	2.9	7.3	17.8	1.2	311.3	0.3	206.8	60.6	29.3	1.7	0	31.3	2.3	542	391	2597	0.14	0.08	21.77%	0.44
DD004F	DD004F-228	203	204	478.5	8.6	3.1	6.6	16.5	1.3	298.6	0.3	178.8	54.9	24.9	1.8	0	33.1	2.1	309	372	2482	0.13	0.04	20.98%	0.42
DD004F	DD004F-229	204	205	799.1	8	3.2	8.1	18.7	1.3	460.1	0.3	257.1	79	33	1.9	0	31.6	2.1	438	224	3478	0.20	0.06	19.65%	0.59
DD004F	DD004F-231	205	206	900	13.7	6.3	11.3	28.1	2.4	495.9	0.5	295.4	89.1	43.3	3.1	0.7	57.6	4.1	963	170	1748	0.23	0.14	19.61%	0.29
DD004F	DD004F-232	206	207	420.1	25.4	13.7	7.2	25.7	5.4	235.5	1.5	152.2	44.2	25.5	4.2	2	136.6	11.3	342	38	2757	0.13	0.05	17.49%	0.46
DD004F	DD004F-233	207	208	446.3	18.8	10.6	7.3	22.5	3.6	250.6	1.5	157.2	46.2	26.9	3.3	1.6	101.1	11.3	294	30	3958	0.13	0.04	18.18%	0.67
DD004F	DD004F-234	208	209	552.5	11	4.7	7.2	18.2	1.8	336.6	0.5	183.3	55.8	25.9	2.2	0.7	46.7	4.1	353	101	4153	0.15	0.05	19.27%	0.70
DD004F	DD004F-235	209	210	1907	21.7	9	16	38.7	3.8	1359.3	1	483.7	158.7	60.2	4.5	1.2	92.1	7.3	547	118	10312	0.49	0.08	15.36%	1.74
DD004F	DD004F-236	210	211	331.1	11.8	6	5.7	16.9	2.2	164.7	0.7	132.4	37.5	22.3	2.2	0.8	59.6	5.2	230	120	2461	0.09	0.03	21.10%	0.47
DD004F	DD004F-237	211	212	470.7	9.1	3.4	6.9	17.5	1.5	296.9	0.4	196.4	57.6	26.7	2	0	37.7	2.9	282	207	3979	0.13	0.04	22.38%	0.61
DD004F	DD004F-238	212	213	1061.5	8.5	3.5	9.2	19.7	1.3	589.3	0.4	352.5	107.9	41.1	2	0.5	33.9	3.2	299	256	8899	0.26	0.04	20.53%	1.50
DD004F	DD004F-240	213	214	622	8.6	3.3	7.4	16.6	1.4	380	0.4	237	71.9	30	1.9	0	34.3	2.9	304	231	3180	0.17	0.04	21.70%	0.54
DD004F	DD004F-241	214	215	378.8	15.4	7.6	7	21.2	3	189.8	0.9	150.6	42	24.7	2.8	1.1	75.9	6.7	183	81	3053	0.11	0.03	20.60%	0.51
DD004F	DD004F-242	215	216	165.7	15.4	10.6	4.5	15.7	3.3	83.4	1.4	72.9	18.6	14.3	2.4	1.6	95.1	10.9	196	28	1789	0.06	0.03	17.47%	0.30
DD004F	DD004F-243	216	217	788.4	22.2	10.5	14.7	37.3	4.1	380.2	1.1	331.3	89.5	54.9	4.4	1.4	103.1	8.3	457	77	4333	0.22	0.07	22.59%	0.73
DD004F	DD004F-244	217	218	180.5	17.1	10.6	4.3	16.2	3.6	90.1	1.4	72.6	20.2	14.7	2.7	1.6	97.5	10.8	169	14	2073	0.06	0.02	16.81%	0.36
DD004F	DD004F-245	218	219	240.4	20.4	11.8	5.7	20.3	4.1	120.5	1.5	100.3	27.2	19.4	3.1	1.9	116.2	11.1	238	40	2134	0.08	0.03	17.86%	0.35
DD004F	DD004F-246	219	220	89.1	20.7	13.6	4.2	16.9	4.4	43	1.7	42.2	10.6	11.7	3.1	2	126.2	13.1	195	6	2167	0.05	0.03	12.80%	0.37
DD004F	DD004F-247	220	221	189.6	20.7	12.8	5.3	19.1	4.2	94.5	1.6	82	22.2	16.8	3.1	1.9	119.8	12.4	229	12	2444	0.07	0.03	16.91%	0.41
DD004F	DD004F-248	221	222	998.3	16	8.5	10	24.9	2.9	565.7	1	303.9	93.9	38.4	3.2	1.2	78.9	7.8	284	59	4681	0.25	0.04	18.37%	0.79
DD004F	DD004F-249	222	223	729.8	22.4	11.4	10.8	30.3	4.2	426.7	1.2	249.1	72.6	37.4	4.1	1.6	110.2	8.8	382	43	4527	0.20	0.05	18.56%	0.76
DD004F	DD004F-250	223	224	1972.1	51.4	22.1	34.7	84.7	8.9	895.9	2	811.7	213.3	125.9	10.4	2.7	220.4	15.5	198	7	16081	0.53	0.03	22.86%	2.71
DD004F	DD004F-251	224	225	1286.6	46.9	25	20.9	54.4	9.2	617.1	2.5	499.7	136.7	72.5	8	3.5	238.3	19.4	328	17	10056	0.36	0.05	20.76%	1.69
DD004F	DD004F-253	225	226	1467.7	44.4	17.7	23.5	64	7.8	723.9	1.6	552	152.5	80.8	8.5	2.4	191.7	11.9	594	17	11563	0.39	0.09	20.89%	1.95
DD004F	DD004F-254	226	227	3494.6	62.9	21.5	49.3	115.2	9.7	1848.8	1.5	1342.5	372.7	188.9	13.5	2.5	238.9	11.6	485	5	29129	0.91	0.07	21.96%	4.91
DD004F	DD004F-255	227	228	3013.7	58.7	19.7	44.7	106.7	9.2	1632.2	1.5	1196	327.3	166.8	12.5	2.3	224.9	11.3	308	20	23959	0.80	0.04	22.21%	4.04
DD004F	DD004F-256	228	229	2426.1	39.3	15.2	26.7	65.6	6.8	1492.2	1.3	773.1	231.9	101.8	7.9	1.9	197.1	9.8	921	25	14548	0.63	0.13	18.62%	2.43
DD004F	DD004F-257	229	230	1319	23.4	8.6	15.6	37.9	3.6	716.5	0.8	443.1	132.2	58	4.9	1.1	99.7	5.8	577	88	7906	0.34	0.08		

For personal use only

Hole_ID	Sample No	Depth_From (m)	Depth_To (m)	Ce ppm	Dy ppm	Er ppm	Eu ppm	Gd ppm	Ho ppm	La ppm	Lu ppm	Nd ppm	Pr ppm	Sm ppm	Tb ppm	Tm ppm	Y ppm	Yb ppm	Nb ppm	Mo ppm	Sr ppm	TReO ₆	Nb2O5%	NdPr%	SrCO ₃ %
DD004F	DD004F-302	269	270	1477.2	22.2	6.8	17.2	39.7	3.6	850.9	0.5	484.1	143.6	65.7	4.4	0.7	89.1	3.7	2035	38	5796	0.38	0.29	19.47%	0.98
DD004F	DD004F-303	270	271	1351.5	20.7	8.3	15.9	36.6	3.6	779.7	0.6	448.6	132.1	60.5	4.1	0.9	93.2	4.6	817	65	8832	0.35	0.12	19.52%	1.49
DD004F	DD004F-304	271	272	1882.9	29.9	11.2	21.4	50.5	4.9	1109.9	0.7	588.2	180.4	78.1	5.7	1.2	126.8	5.7	930	81	10611	0.48	0.13	18.67%	1.79
DD004F	DD004F-305	272	273	2303.9	20.7	6.6	17.6	40.4	3.3	1455.3	0.4	640.6	207.3	71.7	4.6	0.7	83.5	3.1	2652	182	8284	0.57	0.38	17.38%	1.40
DD004F	DD004F-307	273	274	2351.7	30.9	8.4	23.9	55.9	4.3	1413	0.6	749.7	227.8	93.9	6.4	0.9	114.2	4.6	769	73	14548	0.60	0.11	19.14%	2.45
DD004F	DD004F-308	274	275	3793.2	18.6	4.9	25.6	53	2.4	2478	0.5	1032.6	341.2	108.3	5.1	0.5	63	3.4	1110	160	21801	0.93	0.16	17.27%	3.67
DD004F	DD004F-309	275	276	1432.7	22.1	7.1	16	38.9	3.4	889.4	0.5	450.7	135	60.9	4.3	0.6	86.3	3.5	594	82	9636	0.37	0.09	18.50%	1.62
DD004F	DD004F-311	276	277	1408.4	27.5	10.6	17.5	42.4	4.6	792.5	0.8	483.8	140.6	68	5.3	1.1	125.1	5.9	706	80	5606	0.37	0.10	19.81%	0.94
DD004F	DD004F-312	277	278	1203	33.8	13.8	18.4	46.6	6.1	645.7	1.1	449.7	126.5	64.6	6.2	1.6	154.7	8.1	649	36	5664	0.33	0.09	20.59%	0.95
DD004F	DD004F-313	278	279	1538.6	26.6	11.5	17.9	43.1	4.7	880.8	1	519.3	150.2	68.2	5.1	1.2	121.6	7.3	584	67	8139	0.40	0.08	19.61%	1.37
DD004F	DD004F-314	279	280	2797.5	31	8.6	23.4	54.6	4.6	1783	0.5	772	255.7	89.8	6.5	0.9	112.3	3.9	735	81	12027	0.70	0.11	17.22%	2.03
DD004F	DD004F-315	280	281	1761.8	31.7	9	19.1	47.2	4.7	996	0.6	569.5	170.2	73.1	6.3	0.9	122.2	4.7	784	69	10820	0.45	0.11	19.28%	1.82
DD004F	DD004F-316	281	282	4955.4	42.8	11	44.7	99.3	5.6	3552.7	0.8	1399.7	443.3	174.9	10.2	1.1	136.9	6.5	776	176	30037	1.28	0.11	16.87%	5.06
DD004F	DD004F-317	282	283	7580.1	24	5.4	41.4	82.6	2.7	6012.3	0.3	1715.3	614.3	174.1	7.8	0.6	62.2	2.5	595	154	40687	1.91	0.09	14.22%	6.86
DD004F	DD004F-318	283	284	6850.6	36.6	9.8	39.9	87.3	4.9	5047.8	0.7	1609.9	567.7	162	9.3	1	114.7	5.6	1005	110	30026	1.70	0.14	14.92%	5.06
DD004F	DD004F-320	284	285	4858.9	23.8	7.4	23.3	50.3	3.5	3541.9	0.5	1174.2	418.5	107.5	5.4	0.8	83.2	3.6	410	56	17731	1.21	0.06	15.40%	2.99
DD004F	DD004F-321	285	286	491.1	6.7	2.2	4.7	12.1	1	269.2	0.3	177	55	21.2	1.4	0	27.3	1.9	121	71	2964	0.13	0.02	21.57%	0.50
DD004F	DD004F-322	286	287	1591.9	22.5	7.8	15.3	39.8	3.4	926.2	0.7	492.8	149.4	65.2	4.4	0.9	91.3	5	368	168	8750	0.40	0.05	18.71%	1.47
DD004F	DD004F-323	287	288	308.1	9.8	4.4	4.2	12.6	1.7	158.3	0.5	111.8	32.7	15.9	1.7	0.5	46	3.7	289	121	2036	0.08	0.04	20.15%	0.34
DD004F	DD004F-324	288	289	606.8	5.3	1.7	6.7	16	0.7	334.5	0.2	226.3	66.5	31.3	1.5	0	18	1.4	215	175	3409	0.15	0.03	22.16%	0.57
DD004F	DD004F-325	289	290	105.2	23.2	11	5.2	22.7	4.1	47.6	1.3	48.7	12.2	14.3	3.8	1.6	117.5	9.9	231	14	2694	0.05	0.03	13.91%	0.45
DD004F	DD004F-326	290	291	223.2	16.6	7.6	5.4	19.1	2.9	86.9	1	107.8	27.7	19.1	2.9	1.1	85.6	7.4	184	15	2666	0.07	0.03	21.79%	0.40
DD004F	DD004F-327	291	292	222.6	14	7.2	4.7	16.5	2.6	86.9	0.7	108.8	27.7	20.1	2.5	0.9	75.7	5.5	388	25	2011	0.07	0.06	22.63%	0.34
DD004F	DD004F-328	292	293	323.7	7.2	2.9	4.3	12.8	1.2	154.6	0.3	154.1	41.1	21.5	1.5	0	33	2.3	302	9	2174	0.09	0.04	25.53%	0.37
DD004F	DD004F-329	293	294	252.4	12.7	6.8	4.6	15.7	2.7	132.4	0.8	100.7	27.2	16.7	2.4	1	72.3	6.4	274	5	2554	0.08	0.04	19.33%	0.43
DD004F	DD004F-330	294	295	272.1	8.2	3.6	4.5	13.9	1.4	138.2	0.3	119.3	32	20.7	1.7	0	38.5	2.4	314	2	4101	0.08	0.04	22.89%	0.69
DD004F	DD004F-331	295	296	130.5	17.2	10.1	3.8	16.4	3.3	60.7	1.5	63.6	15.2	15.3	2.8	1.7	104.8	11.5	261	7	2379	0.05	0.04	16.87%	0.40
DD004F	DD004F-333	296	297	330.5	18	8.3	5.2	19.8	3.4	154.1	0.9	128.1	34.8	20.7	3.1	1.1	93	6.5	351	46	2105	0.10	0.05	19.48%	0.35
DD004F	DD004F-334	297	298	180.2	21.9	9.8	6.2	22.9	3.7	74.9	1	94.2	22.4	21	3.5	1.3	110	7.4	350	16	4513	0.07	0.05	19.77%	0.76
DD004F	DD004F-335	298	299	1038.9	21.3	8.3	11.8	39	3.2	658.1	0.9	317.1	98.4	40.5	4.7	1.1	87.2	6.6	492	252	3841	0.27	0.07	17.69%	0.65
DD004F	DD004F-336	299	300	155.4	16.3	8.5	4.7	17.2	3	71.7	0.9	71.6	17.7	14.3	2.7	1.2	87.9	7.2	234	28	2328	0.06	0.03	18.31%	0.39
DD004F	DD004F-337	300	301	360.7	11.3	5.6	5.4	16.5	2	186.3	0.6	136.7	38.8	21.2	2.2	0.7	56.4	4.5	247	23	3008	0.10	0.04	20.53%	0.51
DD004F	DD004F-338	301	302	1075	30.3	8.7	15.1	55.2	3.8	701.8	1	316.1	96.5	45.9	7.7	1.3	99.7	7.7	429	634	3277	0.29	0.06	16.64%	0.55
DD004F	DD004F-339	302	303	178.7	9.9	4.9	3.2	12	1.7	90.5	0.6	99.9	19.2	11.5	1.8	0.8	52.1	4.5	165	7	2011	0.05	0.02	19.11%	0.34
DD004F	DD004F-340	303	304	237.7	15	7.2	5	17.6	2.6	117.9	0.9	94.2	26	16.8	2.6	1.1	79.1	7.1	202	17	2437	0.07	0.03	18.84%	0.41
DD004F	DD004F-342	304	305	136.2	11.1	6	3.4	12.3	2.1	64	0.8	56.1	14.6	11.9	1.8	0.9	61.1	5.8	131	15	1999	0.05	0.02	17.97%	0.34
DD004F	DD004F-343	305	306	175	8.4	4.2	2.9	9.6	1.5	90.1	0.7	65.9	18.7	10.9	1.4	0.8	46.9	5	91	11	3079	0.05	0.01	18.95%	0.52
DD004F	DD004F-344	306	307	137.6	8.2	4.4	2.9	9.4	1.6	61.4	0.6	55.6	16.1	9.9	1.4	0.7	47.1	4.6	124	14	2053	0.04	0.02	19.60%	0.35
DD004F	DD004F-345	307	308	197.5	10.1	4.3	4	11.7	1.7	103.3	0.5	77.1	20.9	13.2	1.5	0.6	49	4	128	8	3209	0.06	0.02	19.44%	0.54
DD004F	DD004F-347	308	309	127.4	12.1	6.8	3.4	12	2.6	61.2	0.9	56.7	14.3	11.4	1.8	1.1	74.6	6.9	152	12	2602	0.05	0.02	17.77%	0.44
DD004F	DD004F-348	309	310	206.4	5	2.2	3.5	10.1	0.8	95.9	0.4	88.2	24	14.3	1	0	24.5	3	226	25	2269	0.06	0.03	23.27%	0.38
DD004F	DD004F-349	310	311	315.2	7.8	4.2	3.9	10.9	1.4	172	0.6	106.6	30.9	15.1	1.6	0.6	40.1	4.3	305	104	3897	0.08	0.04	18.76%	0.66
DD004F	DD004F-351	310	312	559.7	10.9	5	6.8	18.1	1.8	280.8	0.5	213.8	60.3	29.1	2.2	0.7	53.7	4.1	207	10	2907	0.15	0.03	21.85%	0.49
DD004F	DD004F-352	312	313	725.3	11.8	4.6	7.4	20.7	1.8	468.9	0.4	219.9	69.5	30.7	2.5	0.6	49.5	3.4	246	21	2369	0.19	0.04	17.79%	0.40
DD004F	DD004F-353	313	314	175.5	10.9	5.9	3.7	12.1	2.1	81.5	0.8	76.5	19.5	13.4	1.8	0.9	61.4	6.1	186	9	1369	0.06	0.03	20.10%	0.23
DD004F	DD004F-354	314	315	466.1	5.2	1.9	5.2	13.2	0.7	261.3	0.2	189.9	49.1	23.9	1.3	0	19.5	1.8	196	68	2506	0.12	0.03	21.40%	0.42
DD004F	DD004F-355	315	316	382.3	6.1	2.2	5	13.3	0.8	217.2	0.2	140.4	40.4	21.1	1.4	0	23.5	1.6	251	31	3241	0.10	0.04	21.04%	0.55
DD004F	DD004F-356	316	317	843.4	7.2	1.9	8.5	19.2	0.9	567.3	0.2	299.6	91.9	36.8	1.8	0	22.6	1.6	225	123	6624	0.22	0.03	20.50%	1.12
DD004F	DD004F-357	317	318	3138	25.7	7.2	25.2	59.8	3.5	2354.9	0.6	802.2	267.9	102	6.2	0.9	89.8	4.9	337	92	13010	0.81	0.05	15.48%	2.19
DD004F	DD004F-358	318	319	1635.4	30.4	12.4	18	50.2	5.1	1029.2	1.1	472.7	149.6	67.4	6.4	1.5	139.8	8.4	298	56	8240	0.43	0.03	17.62%	1.39
DD004F	DD004F-360	319	320	181.1	19.8	9.8	4.8	20.3	3.6	82.7	1.1	79.3	20.8	17.4	3.4	1.4	105.5	8.3	225	9	41				

Section 1: Sampling Techniques and Data

(Criteria in this section apply to all succeeding sections)

Criteria	JORC Code explanation	Commentary
Sampling techniques	<p><i>Nature and quality of sampling (e.g. cut channels, random chips, or specific specialised industry standard measurement tools appropriate to the minerals under investigation, such as down hole gamma sondes, or handheld XRF instruments, etc). These examples should not be taken as limiting the broad meaning of sampling.</i></p> <p><i>Include reference to measures taken to ensure sample representivity and the appropriate calibration of any measurement tools or systems used.</i></p> <p><i>Aspects of the determination of mineralisation that are Material to the Public Report.</i></p> <p><i>In cases where 'industry standard' work has been done this would be relatively simple (e.g. 'reverse circulation drilling was used to obtain 1 m samples from which 3 kg was pulverised to produce a 30 g charge for fire assay'). In other cases, more explanation may be required, such as where there is coarse gold that has inherent sampling problems. Unusual commodities or mineralisation types (e.g.submarine nodules) may warrant disclosure of detailed information.</i></p>	<p>Diamond core was logged both for geological and mineralised structures as noted above with all 2025-2026 drilling geotechnically logged. The core was then cut in half using a diamond brick cutting saw on 1m intervals. Typically, the core was sampled to geological intervals as defined by the geologist within the even two metre sample intervals utilised. The right-hand side of the core was always submitted for analysis with the left side being stored in trays on site.</p> <p>Diamond core was logged both for geological and mineralised structures. The core was then cut in half using a diamond brick cutting saw on 1m intervals. Typically, the core was sampled to geological intervals as defined by the geologist within the even two metre sample intervals utilised. The right-hand side of the core was always submitted for analysis with the left side being stored in trays on site.</p> <p>All data is sourced from 2025 drilling which implemented industry and best practice QAQC program, to provide verification of the sample procedure, the sample preparation and the analytical precision and accuracy of the primary laboratory.</p> <p>Sampling and QAQC procedures were carried out to industry standards.</p> <p>Sample preparation was completed by independent international accredited laboratories. Following cutting or splitting, the samples were bagged by the independent lab in Namibia and then sent to the Jinning Lab in Western Australia (a NATA accredited Australian lab) for preparation and assaying.</p>
Drilling techniques	<p><i>Drill type (e.g. core, reverse circulation, open-hole hammer, rotary air blast, auger, Bangka, sonic, etc.) and details (e.g. core diameter, triple or standard tube, depth of diamond tails, face-sampling bit or other type, whether core is oriented and if so, by what method, etc.).</i></p>	<p>All drilling was completed by industry standard triple tube diamond drilling.</p>
Drill sample recovery	<p><i>Method of recording and assessing core and chip sample recoveries and results assessed.</i></p> <p><i>Measures taken to maximise sample recovery and ensure representative nature of the samples.</i></p> <p><i>Whether a relationship exists between sample recovery and grade and whether sample bias may have occurred due to preferential loss/gain of fine/coarse material.</i></p>	<p>All 2025-26 holes have recoveries above 95% in the majority of the mineralised areas.</p> <p>No relationship exists between sample recovery and grade</p>

For personal use only

Criteria	JORC Code explanation	Commentary
Logging	<p><i>Whether core and chip samples have been geologically and geotechnically logged to a level of detail to support appropriate Mineral Resource estimation, mining studies and metallurgical studies.</i></p> <p><i>Whether logging is qualitative or quantitative in nature. Core (or costean, channel, etc.) photography.</i></p> <p><i>The total length and percentage of the relevant intersections logged.</i></p>	<p>All drillholes are logged and stored at a Aldoro local facility. All core (100%) is logged in detail. Geology logging is qualitative.</p> <p>The digitised logs of the drill programme are appropriate to inform geological interpretation of the results.</p> <p>Photography and recovery measurements were carried out by assistants under a geologist's supervision.</p> <p>All drill holes were logged in full.</p> <p>Logging was qualitative and quantitative in nature.</p>
Subsampling techniques and sample preparation	<p><i>If core, whether cut or sawn and whether quarter, half or all core taken.</i></p> <p><i>If non-core, whether riffled, tube sampled, rotary split, etc and whether sampled wet or dry.</i></p> <p><i>For all sample types, the nature, quality, and appropriateness of the sample preparation technique.</i></p> <p><i>Quality control procedures adopted for all subsampling stages to maximise representivity of samples.</i></p> <p><i>Measures taken to ensure that the sampling is representative of the in-situ material collected, including for instance results for field duplicate/second-half sampling.</i></p> <p><i>Whether sample sizes are appropriate to the grain size of the material being sampled.</i></p>	<p>NTW core was cut in half using a core saw. Typically, the core was sampled to major geological intervals as defined by the geologist initially within the even 1m. All samples were collected from the same side of the core.</p> <p>Sampling of diamond core used industry standard techniques. After drying the sample is subject to a primary crush to 2mm. Sample is split through a riffle splitter until 250gm is left (this involves 4-5 splits through the riffle splitter).</p> <p>The 250-gm sample is milled through an LM5 using a single puck to 90% <75 micron.</p> <p>Milled sample is homogenised through a matt roll with a 150gm routine sample collected using a spoon around the quadrants and sent to MSA and Intertek for analysis.</p> <p>Field QC procedures involved the use of two types of certified reference materials (1 in 20) which is certified by Geostats Ltd,</p> <p>Primary DD duplicate: Generated by cutting the remaining half core into a ¼ and sampled.</p> <p>Coarse blank samples: Inserted 1 in every 20 samples</p> <p>Sample sizes are considered appropriate to cover the variation in textures from aphanitic to porphyritic to minimise any grainsize bias with larger NTW core used and the prep sample being sufficiently large to overcome textural bias.</p>
Quality of assay data and laboratory tests	<p><i>The nature, quality and appropriateness of the assaying and laboratory procedures used and whether the technique is considered partial or total.</i></p> <p><i>For geophysical tools, spectrometers, handheld XRF instruments, etc, the parameters used in determining</i></p>	<p>The NB Nambian Lab completed the sample preparation including crushing and pulverisation after drying at 80deg C. Subsequently these samples are sent to the Australian Lab (Jinning Testing and Inspection) for analysis.</p>

Criteria	JORC Code explanation	Commentary
	<p><i>the analysis including instrument make and model, reading times, calibrations factors applied and their derivation, etc.</i></p> <p><i>Nature of quality control procedures adopted (e.g. standards, blanks, duplicates, external laboratory checks) and whether acceptable levels of accuracy (i.e. lack of bias) and precision have been established.</i></p>	<p>Due to the refraction nature of REE's a Fusion technique was used for all analyses.</p> <p>The samples were fused in a furnace (~650°C.) with Sodium Peroxide in a nickel crucible. The melt is dissolved in dilute Hydrochloric acid and the solution analysed. This technique provides almost complete dissolution of most minerals including silicates with the elements finished by ICP_OES for majors and ICP-MS for trace elements.</p> <p>A definitive QAQC program was implemented to provide verification of the sample procedure, the sample preparation and the analytical precision and accuracy of the primary laboratory, which includes the following:</p> <p>Certified Reference Material (CRM) samples: 2 (two) types of standards sourced from OREAS Ltd. were inserted 1 in every 20 samples</p> <p>Coarse blank samples: Inserted 1 in every 20 samples to monitor cross contamination</p> <p>A blank sample and crusher and pulp duplicate sample were inserted for every hole. The laboratory also inserted QAQC samples, including laboratory standards and CRMs.</p> <p>Overall, 12.5% of the samples submitted to the primary assay lab were QAQC samples. The QAQC procedures undertaken show that returned results are within acceptable limits.</p> <p>Results are considered as acceptable by the Competent Person and the drill samples are considered to be suitable for reporting of exploration results.</p>
Verification of sampling and assaying	<p><i>The verification of significant intersections by either independent or alternative company personnel.</i></p> <p><i>The use of twinned holes.</i></p> <p><i>Documentation of primary data, data entry procedures, data verification, data storage (physical and electronic) protocols.</i></p> <p><i>Discuss any adjustment to assay data.</i></p>	<p>Geological logs are digitally entered into data entry templates in MS Excel.</p> <p>Assay certificates were received from the NATA approved analytical laboratories and imported into the drill database.</p> <p>No adjustments have been made to the data other than conversion to oxides using standard stoichiometry conversion factors.</p>
Location of data points	<p><i>Accuracy and quality of surveys used to locate drillholes (collar and downhole surveys), trenches, mine workings and other locations used in Mineral Resource estimation.</i></p> <p><i>Specification of the grid system used.</i></p>	<p>Diamond drilling collar data have been located with high precision survey tool. The resultant locations are appropriate for resource estimation.</p>

Criteria	JORC Code explanation	Commentary
	<i>Quality and adequacy of topographic control.</i>	Down-hole surveying of dip and azimuth (true) for diamond holes was conducted using an 'Axis' a reflex camera.
Data spacing and distribution	<p><i>Data spacing for reporting of Exploration Results.</i></p> <p><i>Whether the data spacing and distribution is sufficient to establish the degree of geological and grade continuity appropriate for the Mineral Resource and Ore Reserve estimation procedure(s) and classifications applied.</i></p> <p><i>Whether sample compositing has been applied.</i></p>	<p>Drill holes are done on a radial arc from multiple access points due to the steep high relief and not standard pattern drilling. This approach is considered sufficient for resources estimation especially with the increasing number of holes. Sampling down hole is consistent with conventional methodology with assay continuous down hole at regular 1m or less intervals.</p> <p>Sample compositing was not carried out.</p>
Orientation of data in relation to geological structure	<p><i>Whether the orientation of sampling achieves unbiased sampling of possible structures and the extent to which this is known, considering the deposit type.</i></p> <p><i>If the relationship between the drilling orientation and the orientation of key mineralised structures is considered to have introduced a sampling bias, this should be assessed and reported if material.</i></p>	<p>At this stage with a second phase of drilling increasing knowledge and understanding of the lithologies, their mineralisation style and distribution becoming is increasing understood in detail. The mineralisation is lithologically controlled over structural control governed by increasing high iron levels.</p> <p>The drilling crosscuts the mineralised beforite dykes and sovitic cores and is therefore not biased towards specific phases if the intrusion as evidenced in the assays which reveal the REE and Nb rich zones downhole.</p>
Sample security	<i>The measures taken to ensure sample security.</i>	<p>Half core was secured, covered and transported to the NB Namibia lab for core cutting facility securely bagged, A pulp fraction was sent to the Australian Lab for assay.</p> <p>All transport was overseen by either company staff, to the initial sample prep lab, and subsequently by independent personnel.</p>
Audits or reviews	<i>The results of any audits or reviews of sampling techniques and data.</i>	No audits or reviews of sampling techniques and data have been carried out.

Section 2: Reporting of Exploration Results

(Criteria listed in the preceding section also apply to this section)

Criteria	JORC Code explanation	Commentary
Mineral tenement and land tenure status	<i>Type, reference name/number, location and ownership including agreements or material issues with third parties such as joint ventures, partnerships, overriding royalties, native title interests, historical sites, wilderness or national park and environmental settings.</i>	The Competent Person is aware the Namibian Ministry of Mines and Energy approved the transfer of the Kameelburg Project's Exclusive Prospecting Licenses (EPL 7372, 7373 and 7895) from Logan Exploration & Investments CC to the Aldoro JV operating company Kameelburg Exploration Mining

Criteria	JORC Code explanation	Commentary
	<i>The security of the tenure held at the time of reporting along with any known impediments to obtaining a licence to operate in the area.</i>	(Pty) Ltd. The Competent Person is unaware of any impediments for ongoing exploration
Exploration done by other parties	<i>Acknowledgment and appraisal of exploration by other parties.</i>	Limited exploration work has been completed by previous owners, with all rock chips and soil sampling previously reporting publicly.
Geology	<i>Deposit type, geological setting and style of mineralisation.</i>	The mineralisation style being sought at carbonate hosted REE and Nb, associated with magnetite. The style of mineralisation is interpreted to be similar to the Niobec Sant Honore deposit in Canada. The Kameelburg Project is located in the northern Central Damara Orogenic Belt in Namibia and covers the Cretaceous Kameelburg Carbonatite plug and associated radial dykes intruding precursor syenites in the older host Neoproterozoic marbles and schists. The plug is approximately 1.4km in diameter and rises up to 275m above the surrounding peneplain. The intrusion consists of an initial pre-cursor phase of nepheline syenite/syenite followed by two sovitite and three beforosite phases with remanent rafts of volcanic breccia and syenite, the vestiges of earlier intrusive phases. The country rock consists of marbles, quartzite's, mica schists of the Damara Supergroup. Rare earth metals are known to occur in all five phases with higher concentrations in the more magnesium and iron rich beforosites.
Drillhole information	<i>A summary of all information material to the understanding of the exploration results including a tabulation of the following information for all Material drillholes: easting and northing of the drillhole collar elevation or RL (Reduced Level – elevation above sea level in metres) of the drillhole collar dip and azimuth of the hole downhole length and interception depth hole length. If the exclusion of this information is justified on the basis that the information is not Material and this exclusion does not detract from the understanding of the report, the Competent Person should clearly explain why this is the case.</i>	Provided in the main body of the release.
Data aggregation methods	<i>In reporting Exploration Results, weighting averaging techniques, maximum and/or minimum grade truncations (e.g. cutting of high grades) and cut-off grades are usually Material and should be stated. Where aggregate intercepts incorporate short lengths of high-grade results and longer lengths of low-grade results, the procedure used for such aggregation should be stated and some typical examples of such aggregations should be shown in detail.</i>	The exploration results are reported above using a 1% TREO cutoff grade and a 0.2% Nb ₂ O ₅ cutoff as noted in the main body of the release. No sample weighting was applied, nor high grade cuts. Only interval length weighting applied, down hole mineralisation is a weighted average using the cut-offs above to the data in Appendix 1, see coloured highlights

Criteria	JORC Code explanation	Commentary
	<i>The assumptions used for any reporting of metal equivalent values should be clearly stated.</i>	No metal equivalents were utilised in the reporting of the exploration results.
Relationship between mineralisation widths and intercept lengths	<p><i>These relationships are particularly important in the reporting of Exploration Results.</i></p> <p><i>If the geometry of the mineralisation with respect to the drillhole angle is known, its nature should be reported.</i></p> <p><i>If it is not known and only the downhole lengths are reported, there should be a clear statement to this effect (e.g. 'downhole length, true width not known').</i></p>	<p>No relationship has been established at present due to the early stage of exploration.</p> <p>With additional exploration this will be reviewed.</p> <p>All widths are downhole with the true widths not reported.</p>
Diagrams	<i>Appropriate maps and sections (with scales) and tabulations of intercepts should be included for any significant discovery being reported. These should include, but not be limited to a plan view of drillhole collar locations and appropriate sectional views.</i>	Maps and sections in body of text
Balanced reporting	<i>Where comprehensive reporting of all Exploration Results is not practicable, representative reporting of both low and high grades and/or widths should be practiced to avoid misleading reporting of Exploration Results.</i>	Only pertinent results are included given the scope of this announcement
Other substantive exploration data	<i>Other exploration data, if meaningful and material, should be reported including (but not limited to): geological observations; geophysical survey results; geochemical survey results; bulk samples – size and method of treatment; metallurgical test results; bulk density, groundwater, geotechnical and rock characteristics; potential deleterious or contaminating substances.</i>	No material information has been withheld for the project.
Further work	<p><i>The nature and scale of planned further work (e.g. tests for lateral extensions or depth extensions or large-scale step-out drilling).</i></p> <p><i>Diagrams clearly highlighting the areas of possible extensions, including the main geological interpretations and future drilling areas, provided this information is not commercially sensitive.</i></p>	<p>The continuation of drilling programme is planned as per the drill collar table presented in this report. The drilling programme is designed to contribute towards an undated MRE with increased confidence from the maiden report.</p> <p>Diagrams are provided in the main body of the release.</p>