

21 April 2026 | ASX RELEASE

Lennon's Find Project: Drill results reinforce presence of larger volcanic massive sulphide-style system.

Orange Minerals NL (ASX: OMX) (“Orange” or “the Company”) reports that its first deep diamond drill hole at the Lennon’s Find Project in the Pilbara has confirmed the continuation of volcanic massive sulphide (VMS) style mineralisation at depth and significantly improved the Company’s geological understanding of the system.

The diamond hole (OLFD001), co-funded under the Western Australian Government’s Exploration Incentive Scheme (EIS), was designed as a step-out test of coincident geophysical and geochemical anomalies approximately 380m down-dip of known mineralisation.

Orange Minerals Managing Director Mr Chris Michael said:

“This first deep step-out hole represents an important technical milestone for Lennon’s Find. While the primary geophysical target was not directly intersected, the program has confirmed the continuation of the VMS system at depth and significantly improved our understanding of the geological architecture.

Importantly, the DHEM survey has identified multiple conductive targets that provide clear vectors for follow-up work. These results will underpin the next phase of exploration as we refine our targeting toward thicker and higher-grade zones within the system.”

Key Outcomes

- **VMS-style mineralisation intersected at depth**, extending the known system approximately **675m down dip**
- **Broad anomalous polymetallic interval (10.6m)** intersected from 516m, including zones of elevated Zn–Pb–Ag mineralisation
- **The presence of base metal sulphides** at the interpreted favourable stratigraphic horizon supports the potential for thicker accumulations elsewhere within the system
- **Stratigraphic position of mineralisation confirmed**, consistent with the established Lennon’s Find model
- **Downhole EM (DHEM) identified multiple conductive responses**, providing vectors for follow-up targeting
- **Hole successfully delivered under EIS co-funding**, reducing exploration cost and supporting deeper testing

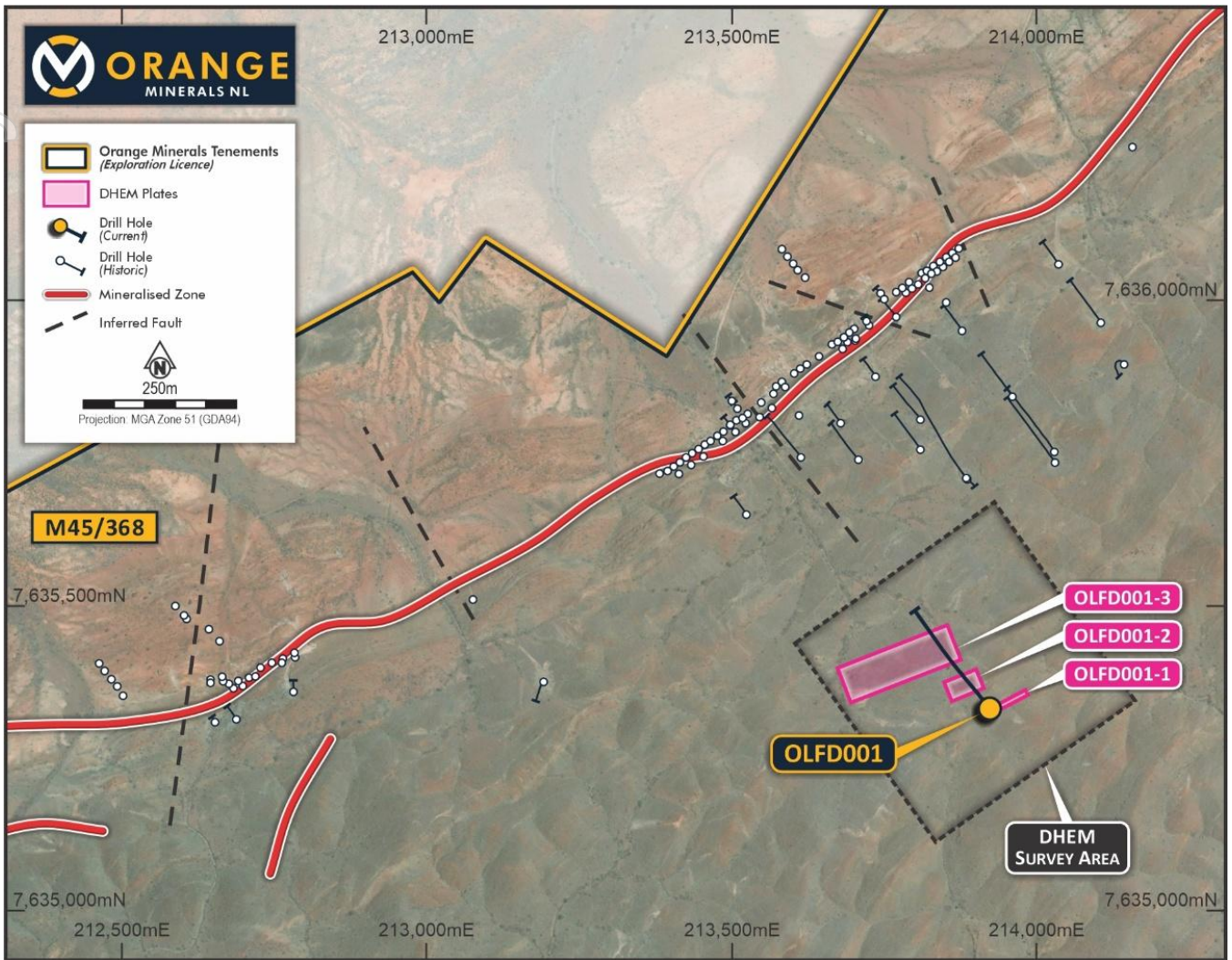


Figure 1. Drill hole OLF001's location along with DHEM plates.

Technical Interpretation

The results confirm that the Lennon's Find mineralisation system continues at depth within the Duffer Formation, reinforcing the project's VMS prospectivity.

While the targeted IP anomaly was not directly explained by the drill hole, the program has:

- validated the geological model,
- confirmed favourable host stratigraphy at depth, and
- provided important constraints on the geometry and position of conductive sources.

DHEM surveying identified multiple off-hole and in-hole conductive responses. These anomalies, when integrated with geological and geochemical data, are considered prospective and will be prioritised for follow-up drilling.



OLFD001 diamond drill hole overview

The hole tested a Au-Ag-Pb-Zn IP anomaly interpreted to represent volcanic massive sulphide (VMS) style mineralisation at depth below the zinc-barite anomalous gossans. The hole was collared in the Apex Basalt and continued to the base contact at 500.1m before passing into Felsic Schist and Cherts of the Duffer Formation. The Lennon's Find resource (VMS style) was identified at the top of the Duffer Formation, approximately 16m below the base of the basalt. An anomalous silver and base metal zone over 10.6m were intersected between 516m to 526.6m, with sphalerite, galena, pyrite and chalcopyrite identified in the core. The zone was consistent with the stratigraphic position of the mineralisation near surface and has successfully extended the mineralisation 675m down dip. The cause of the IP anomaly was not identified in the hole and further work is required to understand the geophysical anomaly.

Hole	From	To	Interval	Au	Ag	Cu	Pb	Zn
OLFD001	516	521	5	0.04	56	0.03	0.59	1.58
	<i>Includes</i>							
	516	518	2	0.09	135	0.06	1.47	2.76

Table 1. Lennons Find drillhole OLFD001 significant intercepts

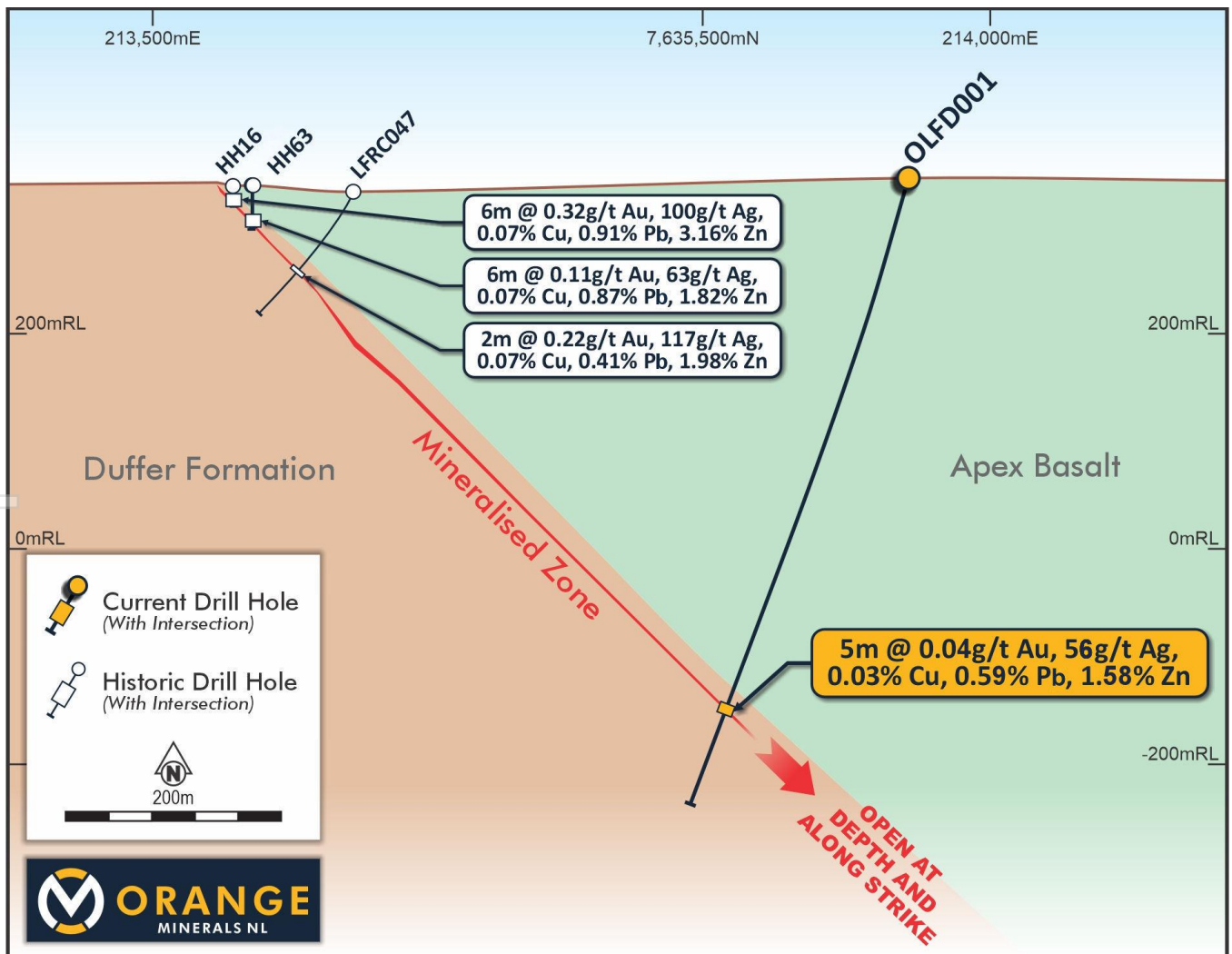


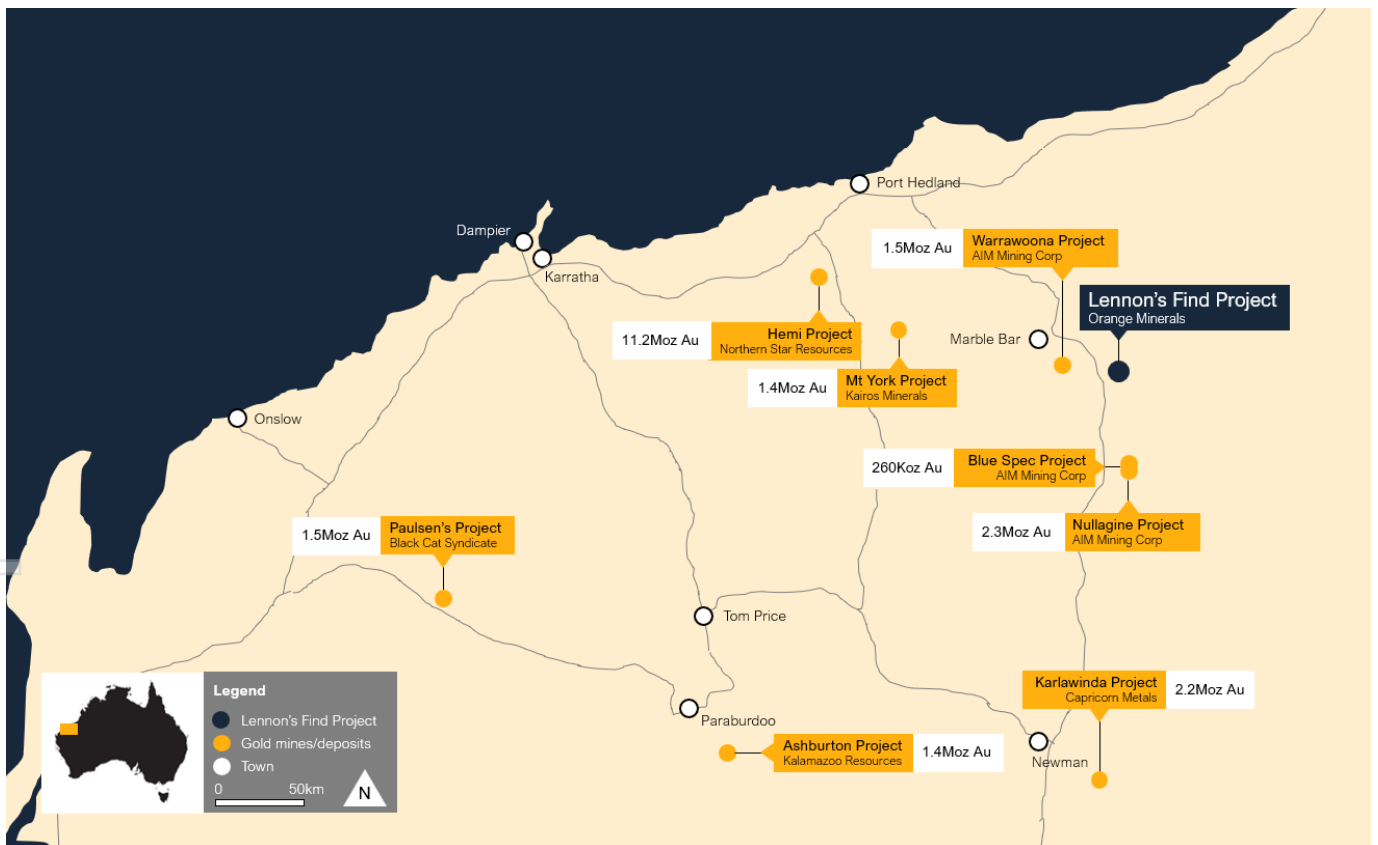
Figure 2. Diamond drill hole OLFD001 cross section.



Downhole electromagnetic (DHEM) survey reinforces VMS prospectivity

Orange's DHEM survey of drill hole OLFD001 earlier in March identified three conductive anomalies which further supports the Lennon's Find's VMS prospectivity:

- **OLFD001-1:** A broad, strongly conductive off hole anomaly was identified at 150m downhole, with a source centred below and to the northeast of the drillhole. This anomaly was consistent with sulphides (pyrite, pyrrhotite and magnetite) identified at 146m. Modelling indicated a strong conductive body with a well constrained areal extent of approximately 50m x 10m.
- **OLFD001-2:** A moderately conductive off hole source at 380 – 400m, with a well constrained areal extent of approximately 50m x 50m. The anomaly coincides with a zone of quartz – carbonate – magnetite veining in the Apex Basalt.
- **OLFD001-3:** A distinct in hole response was observed at 480m downhole. Modelling has indicated a weakly conductive body with a well-defined areal extent of 195m x 95m that correlates well with the main Lennon's Find mineralisation intersected between 510 – 526.6m in the hole. The low conductivity is consistent with potential zinc rich (sphalerite) mineralisation, which is typically less conductive than copper bearing sulphides.





Next Steps

Finalisation of the Earn-in Agreement is progressing, with Orange having satisfied both milestones of the earn-in agreement with Musketeer Mining Ltd. This provides Orange with a 75% interest in M45/368, with standard dilution clauses for future exploration.

The Company is also undertaking a further geophysical review to refine further drilling targets and exploration activities at Lennon's Find.

This ASX announcement has been authorised for release by the Board of Orange Minerals NL.

For further information, please contact:

Chris Michael
Managing Director

Orange Minerals

contact@orangeminerals.com.au

+61 8 6102 2039

Gareth Quinn
Investor Relations

Republic IR

gareth@republicir.com.au

0417 711 108

About Orange Minerals NL

Orange Minerals NL (ASX: OMX) is an Australian exploration company focused on polymetallic (Zn-Pb-Cu-Ag-Au) opportunities in Western Australia's Pilbara region and New South Wales' Lachlan Fold Belt. Additionally, the Company is preparing to commence exploration activities at the Tapa Gold Project in Ghana's prolific Sefwi belt following completion of licence transfers.

Orange Minerals aims to progress both projects through systematic, data-driven exploration supported by clear technical reporting and a disciplined sequence of upcoming milestones.

Competent Persons Statement

The information in this report that relates to Exploration Targets, Exploration Results, Mineral Resources or Ore Reserves is based on information compiled by Phil Shields, a Competent Person who is a Member of the Australian Institute of Mining and Metallurgy (AusIMM). Mr Shields is an employee of Orange Minerals NL and has sufficient experience that is relevant to the style of mineralisation and type of deposit under consideration and to the activity being undertaken to qualify as a Competent Person as defined in the 2012 edition of the Australasian Code for Reporting of Exploration Results, Mineral Resources and Ore Reserves. Mr Shields consents to the inclusion in the report of the matters based on his information in the form and context in which it appears.

Forward Statement

This release includes forward – looking statements which involve a number of risks and uncertainties. These forward-looking statements are expressed in good faith and believed to have a reasonable basis. These statements reflect current expectations, intentions or strategies regarding the future and are based on current assumptions. Should one or more of the uncertainties materialize, or should underlying assumptions prove incorrect, actual results may vary from the expectations, intentions and strategies described in this announcement. No obligation is assumed to update forward looking statements if these beliefs or opinions should change.

For further information, please refer to previous ASX announcements from Orange:

- ASX Announcement 8 August 2023: OMX Acquires Lennon's Find Project in Pilbara WA
- ASX Announcement 10 March 2026: Lennon's Find - Multiple conductive anomalies in DHEM Survey



APPENDIX A: OLFD001 Assays

Hole	Samp_No	From	To	Interval	Au g/t	Ag g/t	Cu_ppm	Pb_ppm	Zn_ppm
OLFD001	OLF0565	515.0	516.0	1.0	<0.01	6	28	100	2720
OLFD001	OLF0566	516.0	517.0	1.0	0.12	242	516	25100	39200
OLFD001	OLF0567	517.0	518.0	1.0	0.05	28	682	4260	15900
OLFD001	OLF0568	518.0	519.0	1.0	<0.01	4	16	50	117
OLFD001	OLF0569	519.0	520.0	1.0	<0.01	4	14	30	96
OLFD001	OLF0570	520.0	521.0	1.0	<0.01	4	152	170	23500
OLFD001	OLF0571	521.0	522.0	1.0	<0.01	2	104	90	2300
OLFD001	OLF0572	522.0	523.0	1.0	<0.01	4	312	40	386
OLFD001	OLF0573	523.0	524.0	1.0	0.02	2	14	40	124
OLFD001	OLF0574	524.0	525.0	1.0	<0.01	4	52	50	3510
OLFD001	OLF0575	525.0	525.7	0.7	0.01	6	500	450	2840
OLFD001	OLF0576	525.7	526.6	0.9	0.08	28	3915	1425	17700
OLFD001	OLF0577	526.6	528.0	1.4	<0.01	2	310	90	510

For personal use only



APPENDIX B: JORC Table 1

Section 1: Sampling Techniques and Data

Criteria	JORC Code	Commentary
Sampling Techniques	<ul style="list-style-type: none"> Nature and quality of sampling (e.g., cut channels, random chips or specific specialized industry standard measurement tools appropriate to the minerals under investigation, such as down hole gamma sondes or handheld XRF instruments, etc.). These examples should not be taken as limiting the broad meaning of sampling. Include reference to measures taken to ensure sample representivity and the appropriate calibration of any measurement tools or systems used. Aspects of the determination of mineralisation that are material to the public report. In cases where 'industry standard' work has been this would be relatively simple (e.g. 'reverse circulation drilling was used to obtain 1m samples from which 3kg was pulverized to produce a 30g charge for fire assay'). In other cases, more explanation may be required, such as where there is coarse gold that has inherent sampling problems. Unusual commodities or mineralisation types (e.g., submarine nodules) may warrant disclosure of detailed information. 	<p>One HQ diamond hole drilled from surface to 615m.</p> <ul style="list-style-type: none"> Half core is sampled and submitted to the commercial laboratory for analysis. The hole was sampled in two sections. The top of the hole (0 – 500.1m) in the Apex Basalt was composite sampled over 4m intervals, with any sample gold values over 0.2 g/t Au re-assayed on a one metre basis. The bottom of the hole (500.1 – 615m) was sampled based on geological interpretation and a standard 1m was used outside areas of mineralisation. Industrial standard practices were conducted to ensure a representative sample was obtained. The sampling techniques are deemed appropriate for the style of mineralisation. Sample analysis followed standard laboratory techniques. All samples were crushed, dried and pulverised to a normal 85% passing 75µm. Gold determination was via fire assay using a 50g charge with Microwave Plasma Atomic Emission Spectroscopy (MP-AES) finish. Multi element analysis was carried out with sodium Peroxide Fusion and ICP-MS finish for a suite of 20 elements (Ag, As, Ba, Bi, Cd, Cu, Fe, Ga, Ge, In, Mn, Mo, Pb, Sb, Se, Sn, Te, U, W and Zn). The mineralised zone was also sent to Bureau Veritas for fire assay gold and multi element (4 acid digest and ICP OES and AES) for check assaying. Further details of lab processing techniques are found in the Quality of assay data and laboratory subsection below.
Drilling Techniques	<ul style="list-style-type: none"> Drill type (e.g., core, reverse circulation, open hole hammer, rotary air blast, auger, Bangka, sonic, etc.) and details (e.g., core diameter, triple or standard tube, depth of diamond tails, face sampling bit or other type, whether core is orientated and if so, by what method, etc.). 	<ul style="list-style-type: none"> A Terra Drilling truck mounted rig was used for the program. The hole was drilled at -75 towards 320°. Core drilling is HQ core size. The core was continuously orientated with each run with an AXIS Champ Navigator.
Drilling Sampling Recovery	<ul style="list-style-type: none"> Method of recording and accessing core and chip sample recoveries and results accessed. Measures taken to maximise sample recovery and ensure representative nature of the samples. Whether a relationship exists between sample recovery and grade and whether sample bias may have occurred due to preferential loss / gain of fine / coarse material. 	<ul style="list-style-type: none"> The downhole depth was determined by counting the drill rods and run lengths. Core was reconstructed in the trays into continuous lengths and checked against core blocks. Core was orientated and a line denoting the bottom of the hole traced along the core. Diamond drill core recoveries are recorded as a percentage calculated from measured core versus drilled intervals. Intervals of core loss are recorded using core blocks in the trays. Overall recoveries were high. No grade bias was recognised.
Logging	<ul style="list-style-type: none"> Whether core and chip samples have been geologically and geotechnically logged to a level of detail to support appropriate Mineral Resource estimation, mining studies and metallurgical studies. Whether logging is qualitative or quantitative in nature. Core (or costean, channel, etc.) photography. The total length and percentage of the relevant intersections logged. 	<ul style="list-style-type: none"> Core logging is carried out by company and contract geologists. A quick summary log is undertaken on site during drilling for lithology and mineralisation. More detailed logging has been completed at a commercial core processing facility (BM Geological Services – Kalgoorlie) with more detailed lithology, alteration and mineralisation and where oriented appropriate structural measurements collected. Geotechnical logging was limited to recording RQD and was undertaken at the Kalgoorlie core facility. Geological logging is qualitative, and all core was photographed (wet and dry).



Criteria	JORC Code	Commentary
Sub Sampling techniques and sample preparation	<ul style="list-style-type: none"> If core, whether cut or sawn and whether quarter, half or all core taken. If non-core, whether riffled, tube sampled, rotary split, etc. and whether sampled wet or dry. For all sample types, the nature, quality and appropriateness of the sample preparation technique. Quality control procedures adopted for all sub sampling stages to maximise representivity of samples. Measures taken to ensure that the sampling is representative of the insitu material collected, including for instance results for field duplicate / second half sampling. Whether sample sizes are appropriate to the grain size of the material being sampled. 	<ul style="list-style-type: none"> For diamond drilling, sample intervals will be based on geological interpretation and a standard 1m will be used outside mineralised intervals. The HQ core was cut in half along the orientation line and ½ core sampled from one side of the line to eliminate sample bias. Half core was bagged and dispatched for assaying and the other half retained and provided to the WA government as part of the EIS requirements. The sample sizes are appropriate to the grain size of the material being sampled. QAQC was conducted, with standards and blanks inserted 1:50 samples and duplicate samples taken every 20 samples. The laboratory also undertook an internal QAQC protocol. Two standards from OREAS (627 & 628) were used due to the predicted base metal grades of the Lennons Find mineralisation. A blank from OREAS (24d) was also inserted into the batch.
Quality of assay data and laboratory tests	<ul style="list-style-type: none"> The nature, quality and appropriateness of the assaying and laboratory procedures used and whether the technique is considered partial or total. For geophysical tools, spectrometers, handheld XRF instruments, etc., the parameters used in determining the analysis including instrument make and model, reading times, calibration factors applied and their derivation, etc. Nature of quality control procedures adopted (eg standards, blanks, duplicates, external laboratory checks) and whether acceptable levels of accuracy (ie lack of bias) and precision have been established. 	<ul style="list-style-type: none"> All samples were dispatched to SGS laboratory in Kalgoorlie for sample preparation. The samples were pulverised to a normal 95%, passing 75µm. Gold was determined by fire assay using lead collection technique with a 50g sample weight and Microwave Plasma Atomic Emission Spectroscopy (MP-AES). Multi Element analysis by Sodium Peroxide Fusion with ICP-MS finish for 20 elements (Ag, As, Ba, Bi, Cd, Cu, Fe, Ga, Ge, In, Mn, Mo, Pb, Sb, Se, Sn, Te, U, W and Zn). The mineralised zone was sent to Bureau Veritas Perth for fire assay gold and for Multi element (4 acid digest and ICP AES and OES Ag, Ba, Cu, Fe, Pb and Zn) check analysis. SGS routinely inserted analytical blanks, standards and duplicates into the sample batch for lab QAQC performance monitoring. Orange Minerals also inserted QAQC samples into the batch with no issues noted.
Verification of sampling and assaying	<ul style="list-style-type: none"> The verification of significant intersections by either independent or alternative company personnel. Documentation of primary data, data entry procedures, data verification, data storage (physical and electronic) protocols. Discuss any adjustment to assay data 	<ul style="list-style-type: none"> Logged drillhole was reviewed by a senior geologist and consultant geologist. Final data is sent to RockSolid for database management. No twinning of holes was undertaken There was no adjustment to assay data Significant intercepts were verified by senior Orange Minerals personnel.
Location of data points	<ul style="list-style-type: none"> Accuracy and quality of surveys used to locate drill holes (collar and down hole surveys), trenches, mine workings and other locations used in Mineral Resource Estimation. Specification of the grid system used. Quality and accuracy of topographic control. 	<ul style="list-style-type: none"> GDA94, Zone 51 grid system was used. The drillhole collar was surveyed by GPS survey. The set-up collar azimuth and inclination was originally established using the AXIS instrumentation on the drill rig and checked with a compass and clinometer. Downhole surveys were completed by the drill contractor at 30m intervals during drilling. A gyroscopic survey was run on completion of the hole



Criteria	JORC Code	Commentary
Data spacing and distribution	<ul style="list-style-type: none"> • <i>Data spacing for reporting of Exploration Results.</i> • <i>Whether the data spacing, and distribution is sufficient to establish the degree of geological and grade continuity appropriate for the Mineral Resource and Ore Reserve estimation procedure (s) and classification applied.</i> • <i>Whether sample compositing has been applied.</i> 	<ul style="list-style-type: none"> • Historically drilling at Lennons Find focused on the near surface oxide potential of the Lennons Find mineralisation. The single diamond hole in this announcement was designed to test coincidental geochemical and geophysical anomalies down dip of the outcropping mineralisation and to advance the understanding of the mineralisation system. • The single hole was drilled at least 380m from previous drilling at Lennons Find. • The exploration hole was not intended to be included in any mineral resource calculation.
Orientation of data in relation to geological structure	<ul style="list-style-type: none"> • <i>Whether the orientation of sampling achieves unbiased sampling of possible structures and the extent to which this is known, considering the deposit type.</i> • <i>If the relationship between the drilling orientation and the orientation of key mineralised structure is considered to have introduced a sampling bias, this should be assessed and reported if material.</i> 	<ul style="list-style-type: none"> • The drilling is as close to orthogonal to mineralisation as possible. The hole was drilled towards 320° against a surface mineralisation trend striking 050°. Core is routinely oriented, and structural measurements are taken on significant mineralised zones and will be reviewed to determine true thickness for any future Resource Estimation.
Sample security	<ul style="list-style-type: none"> • <i>The measures taken to ensure sample security</i> 	<ul style="list-style-type: none"> • Sample security procedures have followed standard industrial practice. The core was palletised on site and wrapped in black plastic for transport by commercial transport company back to Kalgoorlie. The core was stored in a secure facility at BMGS in Kalgoorlie.
Audits or reviews	<ul style="list-style-type: none"> • <i>The results of any audits or reviews of sampling techniques and data.</i> 	<ul style="list-style-type: none"> • No audits have been conducted of the historical sampling techniques.

For personal use only



Section 2: Reporting of Exploration Results

(Criteria listed in the previous section also apply to this section)

Criteria	JORC Code Explanation	Commentary
Mineral tenement and land tenure status	<ul style="list-style-type: none"> Type, reference name / number, location and ownership including agreements or material issues with third parties such as joint ventures, partnerships, overriding royalties, native title interests, historical sites, wilderness or national park and environmental settings. 	<ul style="list-style-type: none"> The Lennon's Find project is located approximately 70km south of Marble Bar. The project comprises a granted mining lease (M45/368) held 95% by Musketeeer Minerals Ltd and 5% by prospectors Paul Rodney Fletcher and William John Marshall. The mining lease expires on the 18th of May 2030.
Exploration done by other parties	<ul style="list-style-type: none"> Acknowledgment and appraisal of exploration by other parties. 	<ul style="list-style-type: none"> First discovered in 1907 by namesake with small scale mining between 1951 and 1960. In 1964, three mineral claims were pegged by local prospectors over gossanous areas. Seventeen vertical percussion holes drilled. In 1983, Century International Mining Ltd identified a non JORC compliant resource estimation of 1.2Mt @ 0.43% Cu, 7.76% Zn, 1.94% Pb and 100g/t Ag. Jabiru Metals Limited acquired Lennon's Find (M45/368) in 1997, with exploration consisting of geological mapping and regional remote sensing. In 1988, consulting geologists K.H.Morgan and Associates completed an independent geological assessment which highlighted the potential for the area to host stratiform Cu-Pb-Zn mineralisation within the Duffer Formation. In 2002 a fixed loop TEM survey was completed and identified 6 zones of interest. Between 2005 and 2009, the following exploration was conducted; 24 rock chips were collected, returning maximum values of 6.87% Cu, 11.39% Pb, 22.29% Zn and 750g/t Ag. Re modelling of the 2002 Fixed Loop Electromagnetic survey generated additional targets and an inferred resource estimate of 853Kt @ 0.69% Cu, 1.80% Pb, 7.69% Zn and 115g/t Ag was completed for the Hammerhead prospect. During 2007, a 120-sample stream sediment program was carried out. Laconia Resources Ltd purchased the lease in 2010 and drilled 42 drill holes with a best result of 4m@ 2.35% Zn, 1.04% Pb, 0.08% Cu, 117gt/ Ag and 0.23g/t Au. A new inferred mineral resource was reported in 2011 as 1.85Mt @ 5.1% Zn, 1.4% Pb, 0.2% Cu, 82g/t Ag and 0.26g/t Au. Volcanic Metals commissioned Optiro in 2019 to update the 2011 MRE using the JORC 2012 guidelines, resulting in 1.55Mt @ 5.9% Zn, 0.2% Cu, 1.6% Pb, 0.3g/t Au and 80g/t Ag. In 2018, Musketeeer Mining Limited commissioned Khumsup Geophysics Ltd to conduct an offset pole – dipole induced polarisation (PDIP) survey, orientated NW-SE across the Hammerhead deposit. The survey successfully identified a deep (>350m below surface) IP chargeability anomaly response positioned down dip and to the SE of the surface mineralisation. Orange Minerals contracted Khumsup to extend the 2018 IP survey in 2024. The survey was conducted on a NW-SE traverse using the local coordinate system and nomenclature previously defined by Khumsup at Hammerhead. The new data was combined with the previous 2018 data and a new 2D and 3D inversions were completed. The updated inversions confirmed the chargeability anomaly from the 2018 survey closing off the anomaly to the southeast.



For personal use only

Criteria	JORC Code	Commentary
Geology	<ul style="list-style-type: none"> • <i>Deposit type, geological setting and style of mineralisation.</i> 	<ul style="list-style-type: none"> • The Lennons Find project is situated in the eastern section of the Archean Pilbara Craton of Western Australia. It covers the southeastern contact between the Mount Edgar Batholith and volcanics of the Archean Warrawoona Group and encompasses the known base metal prospects in the region. The Warrawoona Group is dominated by felsic schists of the Duffer Formation and the overlying Apex Basalt. • The mineralisation generally consists of sphalerite, chalcopyrite and galena with associated barite and pyrite. The mineralisation style combined with features such as vertical zonation, texture, and its stratiform mode suggests the deposits are volcanogenic (VMS) origin.
Drill hole information	<ul style="list-style-type: none"> • <i>A summary of all information material to the understanding of the exploration results including a tabulation of the following information for all material drill holes.</i> • <i>Easting and northing of the drill hole</i> • <i>Elevation or RL of the drill hole collar</i> • <i>Dip and azimuth of the hole</i> • <i>Down hole length and interception depth</i> • <i>Hole length</i> 	<ul style="list-style-type: none"> • All drill collar location details are reported in the body of this announcement.
Data aggregation methods	<ul style="list-style-type: none"> • <i>In reporting Exploration results, weighting averaging techniques, maximum and / or minimum grade truncations and cut off grades are usually material and should be stated.</i> • <i>Where aggregate intercepts incorporate short lengths of high-grade results and longer lengths are reported, there should be stated, and some typical examples of such aggregations should be shown in detail.</i> • <i>The assumptions used for any reporting of metal equivalent values should be clearly</i> 	<ul style="list-style-type: none"> • No high-grade cutting was applied to the intercepts • No metal equivalence has been used. • Appropriate rounding of results has been applied.
Relationship between mineralisation and intercept lengths	<ul style="list-style-type: none"> • <i>These relationships are particularly important in the reporting of Exploration Results</i> • <i>If the geometry of the mineralisation with respect to the drill hole angle is known, its nature should be reported.</i> • <i>If it is not known and only the down hole lengths are reported, there should be a clear statement to this effect (eg 'down hole length, true width not known').</i> 	<ul style="list-style-type: none"> • All intercept widths reported are down hole lengths. No attempt has been made here to report true widths. • The diamond hole in this program was angled at 75° towards 320°. • Mineralisation at Lennons Find strikes 050° and dips moderately (60°) to the SE. Hence drilling is orientated perpendicular to the strike of mineralisation but is less optimally orientated to intersect the dip at a high angle.
Diagrams	<ul style="list-style-type: none"> • <i>Appropriate maps and sections (with scales) and tabulations of intercepts should be included for any significant discovery being reported. These should include, but not be limited to a plan view of the drill hole collar locations and appropriate sectional views.</i> 	<ul style="list-style-type: none"> • Appropriate diagrams have been included if appropriate.
Balanced reporting	<ul style="list-style-type: none"> • <i>Where comprehensive reporting of all Exploration results is not practicable, representative reporting of both low and high grades and/or widths should be practiced to avoid misleading reporting of Exploration results.</i> 	<ul style="list-style-type: none"> • All results are reported in the body of the text or in the associated appendices. • The results presented here mark significant results that are open in several directions that require systematic follow up. • It should be noted that, as per many VMS mineralised systems, results indicate that base metal assays vary from below detection up to very high-grade results over several metres.



Criteria	JORC Code	Commentary
Other substantive exploration data	<ul style="list-style-type: none"><i>Other exploration data, if meaningful and material, should be reported including (but not limited to): geological observations, geophysical survey results, geochemical survey results, bulk samples – size and method of treatment, metallurgical test results, bulk density, groundwater, geotechnical and rock characteristics, potential deleterious or contaminating substances.</i>	<ul style="list-style-type: none">The diamond drill hole was testing a coincidental geochemical and IP geophysical anomaly as defined by the IP survey conducted in 2024 (OMX 16th October 2024 – Exploration Update Lennons Find Project).No potentially deleterious or contaminating substances have been noted in historic WAMEX reports or observed in work completed by Orange Minerals.
Further work	<ul style="list-style-type: none"><i>The nature and scale of proposed further work (e.g. tests for lateral or depth extensions or large – scale step out drilling). Diagrams clearly highlighting the areas of possible extensions, including the main geological interpretations and future drilling areas, provided this information is not commercially sensitive.</i>	<ul style="list-style-type: none">A downhole magnetic survey was completed on OLF001. A drone magnetic survey and Lidar survey over the Lennons Find mining lease is being considered to generate further targets for drilling.

For personal use only