

For personal use only



Hidden giants

**Systematic exploration for big gold deposits
in Australia's richest gold province**



Dr Matthew Painter
MD & CEO



Ignite Investment Summit, Singapore – 21-22 April 2026

DISCLAIMER AND FORWARD-LOOKING STATEMENT

This presentation has been prepared by Kalgoorlie Gold Mining Limited (**Company**). It contains general background information only which is current at the date of this presentation unless otherwise specified. It contains selected summary information and does not purport to be all-inclusive, comprehensive or to contain all of the information that may be relevant, or which a prospective investor may require in evaluations for a possible investment in the Company. Prospective investors should not rely on the information contained in this presentation, and must satisfy themselves as to the accuracy of all such information. This presentation has been prepared based on information available at the time of preparation and is subject to change without notice. In receiving this presentation, each recipient agrees to the foregoing terms and conditions, including any modifications to them. No person is under any obligation to update this presentation at any time after its release.

This presentation is provided for general information purposes only. This presentation does not constitute an offer, invitation, solicitation or recommendation with respect to the purchase or sale of securities in the Company in any jurisdiction. It is not a prospectus, product disclosure statement, pathfinder document or any other type of public offer disclosure document for the purposes of the Corporations Act 2001 (Cth) and has not been, and is not required to be, lodged with the Australian Securities and Investments Commission (**ASIC**). It should not be relied upon by the recipient in considering the merits of the Company, or the acquisition of shares in the Company.

None of KalGold, its subsidiaries nor its representatives make any representation, warranty or guarantee of any kind, express or implied, as to the accuracy, completeness or reasonableness of the information contained herein or any other written or oral communication transmitted or made available to any person receiving this presentation. To the maximum extent permitted by law, KalGold, its subsidiaries and representatives expressly disclaim any and all liability based on or arising from, in whole or in part, such information, or any errors or omissions.

This presentation contains forward-looking statements regarding the Company's resources, intentions and future business, including the future business of its subsidiaries. These statements reflect current information, expectations, intentions and strategies regarding the future, and are subject to certain risks and uncertainties. Should one or more of these risks or uncertainties materialise, or should any of the underlying assumptions prove incorrect, actual results may vary from the expectations, intentions and strategies described in this presentation. Investors are cautioned not to place undue reliance on forward-looking statements, which speak only as of the date they are made. Other than where required by law, the Company is under no obligation to revise any forward-looking statement to reflect events or circumstances after the date of this presentation or to reflect the occurrence of unanticipated events.

Though reasonable care has been taken to ensure that the facts are accurate and/or that the opinions expressed are fair and reasonable, no reliance can be placed for any purpose whatsoever on the information contained in this document or on its completeness. Actual results and developments of projects and the market development may differ materially from those expressed or implied by these forward-looking statements depending on a variety of factors.

No stock exchange, regulation services provider, securities commission or other regulatory authority has approved or disapproved the information contained in this news release.

For personal use only

RESULTS, COMPETENT PERSON, AND MINERAL RESOURCE ESTIMATES

Exploration Results

The references in this Presentation to historic Exploration Results for the Pinjin Gold Project were reported in accordance with Listing Rule 5.7 on 23 May 2023. The Company confirms that it is not aware of any new information or data that materially affects the information included in the previous market announcement noted above.

The references in this announcement to Exploration Results were reported in accordance with Listing Rule 5.7 in the announcements titled:

- *Multiple drill programs at Kirgella Gift and Lighthorse, to commence mid-April, 11 March 2026*
- *Kirgella Gift diamond drilling intersects thick gold mineralisation, confirms primary gold extends at depth, 13 February 2026.*
- *New RC drilling extends primary gold at Lighthorse, 19 December 2025*
- *Sub-Audio Magnetics (SAM) geophysical data guides upcoming RC drill program at Pinjin.*
- *Diamond Drilling at Kirgella Gift and Providence to commence soon, 26 August 2025.*
- *Lighthorse Strike Extended to 1,450m. Extensive RC Program Beginning Shortly, 15 July 2025.*
- *SAM geophysical survey commencing around Lighthorse, and exploration update, 6 June 2025*
- *Farm-in at Pinjin Gold Project completed, 29 May 2025.*
- *Quarterly activities report for the quarter ending 31 March 2025, 30 April 2024*
- *Lighthorse RC program confirms primary gold mineralisation at depth, follow up drilling imminent, 15 April 2025*
- *Aircore drilling to test Lighthorse strike extensions in April, 10 March 2025*
- *Multi-kilometre target areas along strike at KalGold's Lighthorse discovery, 17 February 2025*
- *'Lighthorse' gold discovery at Pinjin: thick, high-grade gold intercepted at new greenfields find, 7 February 2025*
- *First-pass aircore drilling at Kirgella West: broad gold anomalism and mineralisation over 1,200m strike, 18 December 2024*
- *Quarterly activities report for the quarter ending 30 September 2024, 30 October 2024*
- *Providence: North plunging shallow gold mineralisation has significant potential, 7 December 2023*
- *Shallow, high-grade results extend Kirgella Gift and Providence corridor to over 1,150m of strike, 25 October 2023*
- *Thick, shear-hosted gold mineralisation intercepted at Kirgella Gift, 8 June 2023*
- *KalGold farms-in to Kirgella gold tenements and acquires Rebecca West tenure at Pinjin, 23 May 2023.*

The Company confirms that it is not aware of any new information or data that materially affects the information included in the previous market announcements noted above.

Competent Person Statement

The information in this presentation that relates to Exploration Targets, Exploration Results, Mineral Resources or Ore Reserves is based on information compiled by Dr Matthew Painter, a Competent Person who is a Member of the Australian Institute of Geoscientists. Dr Painter is the Managing Director and Chief Executive Officer of Kalgoorlie Gold Mining Limited (KalGold) and has sufficient experience that is relevant to the style of mineralisation and type of deposit under consideration and to the activity being undertaken to qualify as a Competent Person as defined in the 2012 edition of the Australasian Code for Reporting of Exploration Results, Mineral Resources and Ore Reserves. Dr Painter consents to the inclusion in the presentation of the matters based on his information in the form and context in which it appears. Dr Painter holds securities in Kalgoorlie Gold Mining Limited.

Mineral Resource Estimate

The references in this announcement to Mineral Resource estimates were reported in accordance with Listing Rule 5.8 in the following announcements:

- *La Mascotte gold deposit: First JORC (2012) Mineral Resource of 138,000 oz Au, 7 March 2023.*
- *First Kirgella Gift Inferred Resource of 76,400 oz from 3m, 25 July 2024.*

In accordance with ASX Listing Rule 5.23, the Company confirms that it is not aware of any new information or data that materially affects the information included in the previous market announcement noted above and that all material assumptions and technical parameters underpinning the Mineral Resource estimates in the previous market announcements continue to apply.

WESTERN AUSTRALIAN GOLD

For personal use only



The Eastern Goldfields of Western Australia

Gold-mineralised rocks hidden by surface sediment

KalGold's aim – to discover large gold deposits on major gold mineralising structures



CORPORATE STRUCTURE / TEAM

Capital Structure

A\$19.2 million

Market Cap

at A\$0.042/share
on 8 April 2026

A\$3.9 million

Cash

31 December 2025

455.9 million

Shares on issue

Nil

Debt

31 December 2025

Directors and Management



Pauline Gately

Non-Executive Chair

- Investment strategist, commercial focus
- 20 years investment banking
- Acquisitions, exploration, project development

Matt Painter

Managing Director & CEO

- PhD Economic Geology
- Global gold experience, multiple commodities
- 25 years technical and corporate experience

Andrew Penkethman

Non-Executive Director

- Geologist, global experience
- 25 years technical and corporate experience
- Managing Director of Ardea Resources Limited

Graeme Smith

Company Secretary/CFO

- Corporate governance & finance professional
- 30 years experience in the resources industry

Scott Herrmann

Exploration Manager

- Geologist, 20 years' global experience
- Gold exploration, resource development, production

Merle Newton

Principal Geologist

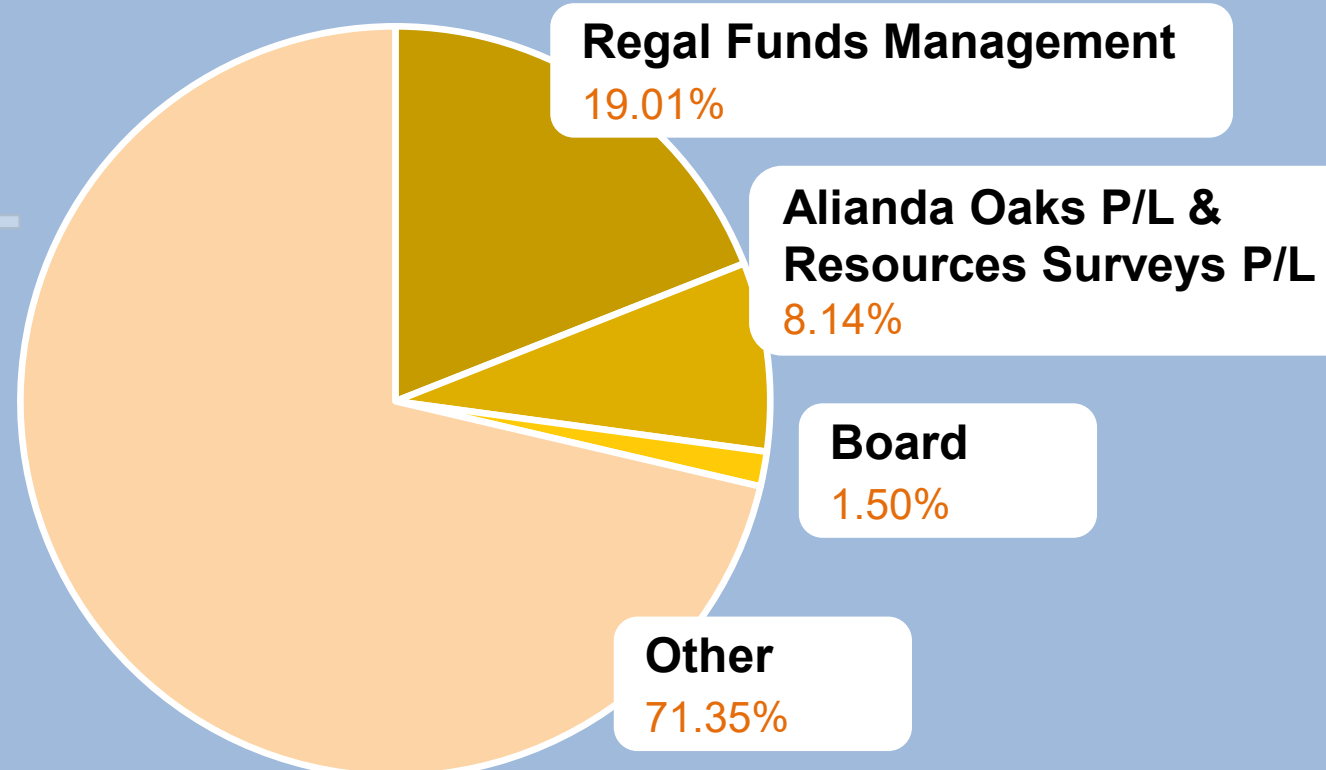
- Geologist, 20 years' global experience
- **Kalgoorlie-based** gold exploration specialist

Tash Maitland

Exploration Geologist

- Geologist, 5 years' experience
- **Kalgoorlie-based** gold explorationist

Top Shareholders

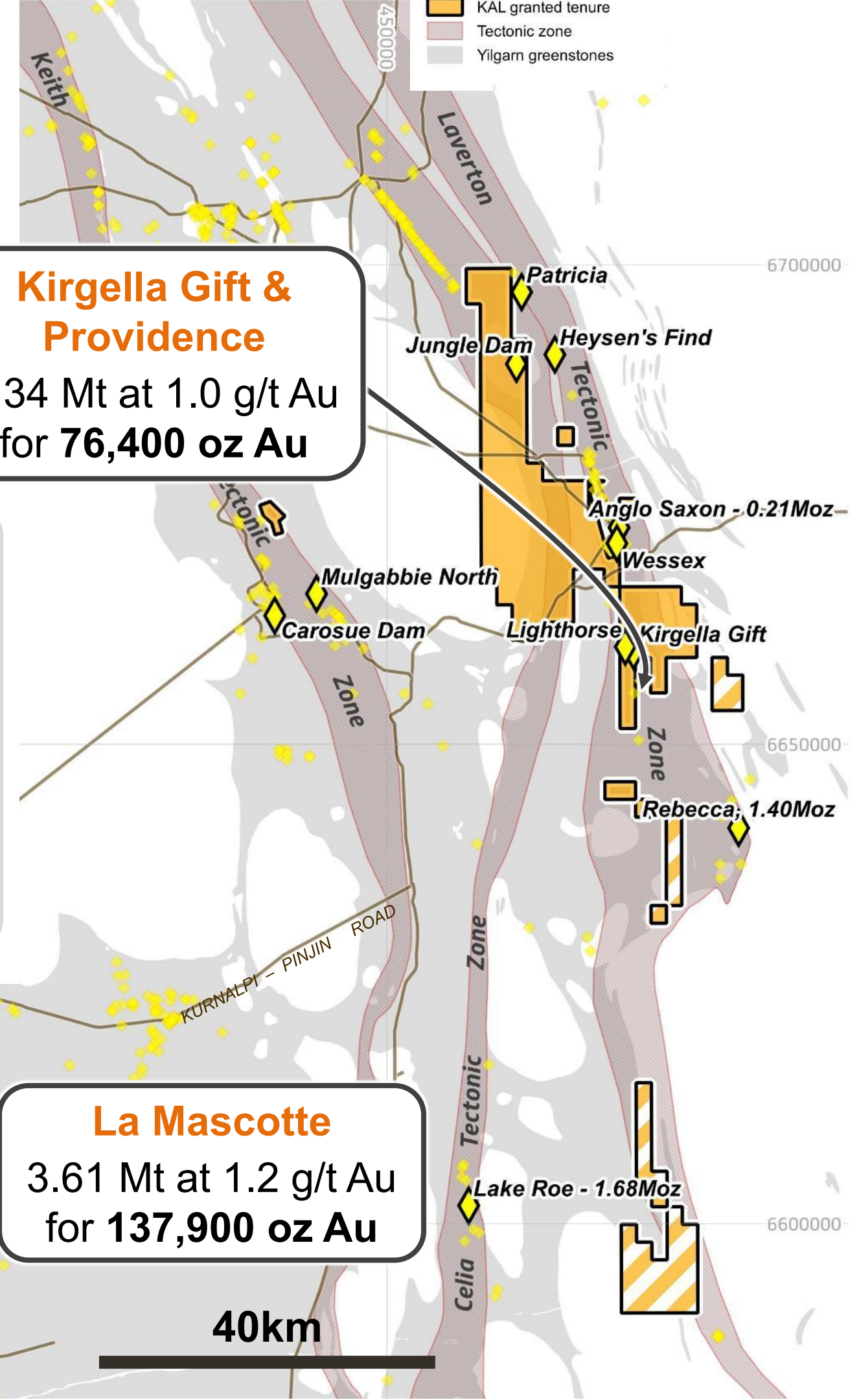


GOLD RESOURCES

Shallow accessible gold deposits
an early indicator of more?

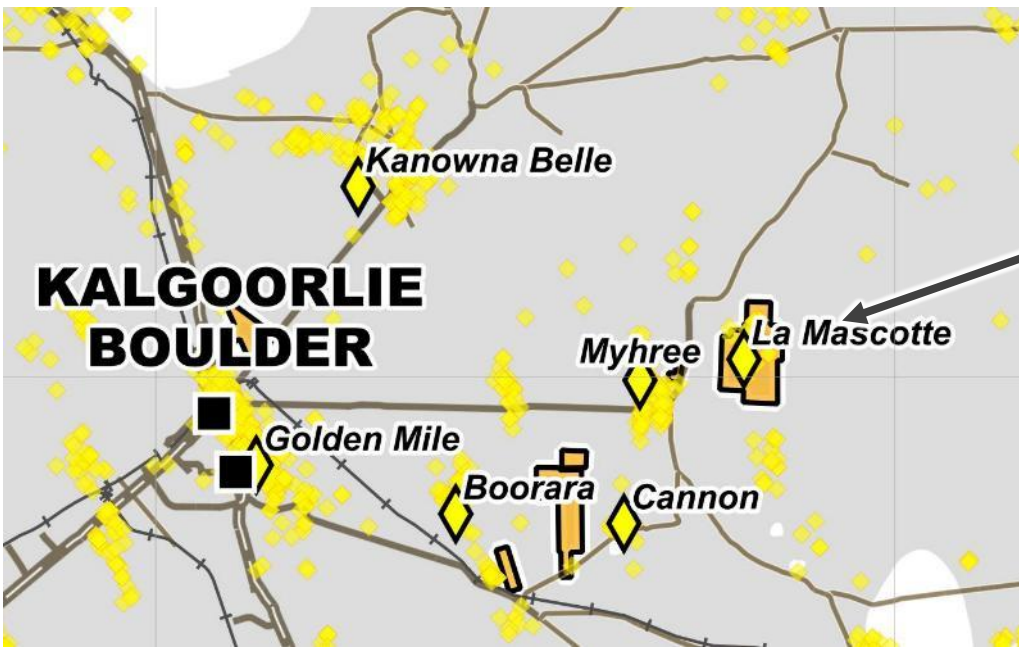
Project	Tonnes (Mt)	Au Grade (g/t)	Au (oz)	Discovery Cost per ounce
Bulong Taurus	3.61	1.2	137,900*	A\$4.79
Pinjin	2.34	1	76,400*	A\$4.18
Total	5.95	1.1	214,300*	A\$4.57

* Inferred Mineral Resource Estimate



Kirgella Gift & Providence
2.34 Mt at 1.0 g/t Au
for **76,400 oz Au**

La Mascotte
3.61 Mt at 1.2 g/t Au
for **137,900 oz Au**



For personal use only

KALGOORLIE INVESTMENT PROPOSITION

**Aim: BIG GOLD DISCOVERIES TO
MAXIMISE RETURN ON INVESTMENT**

Scientific focus

- Pinpointing areas of **greatest gold potential**
- Proven **multi-million ounce** corridors are **unexplored** where **hidden by surface sediment**

Big company approach

- **In-house** definition of targets
- **Comprehensive, systematic testing** ensures that **no significant gold mineralisation is missed**

MORE BIG DEPOSITS?

The south of the **Laverton Tectonic Zone** mirrors the wide, mineralised north

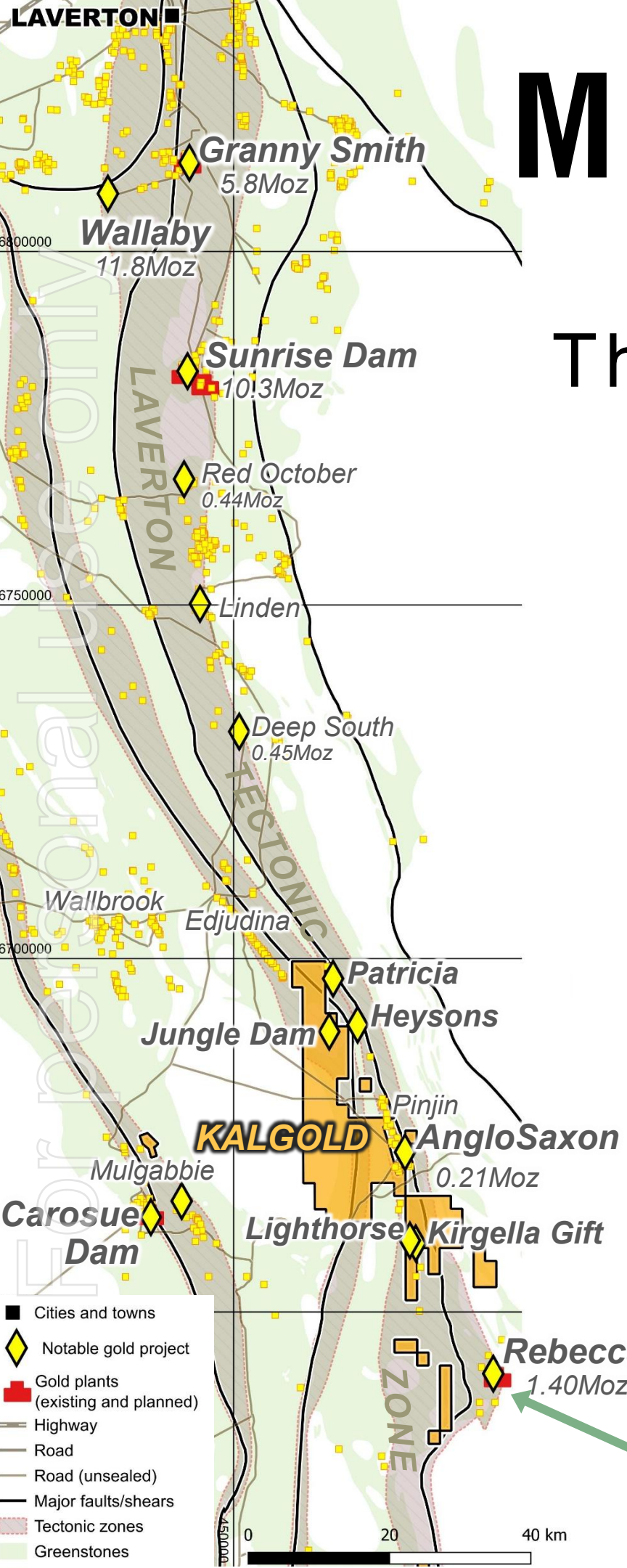
We aim to discover **gold deposits in the south**

Small company upside, big company targets

Wide, N-S zone contains giant deposits over 5 Moz

Narrower, SE zone contains ~0.5 Moz deposits

Wide N-S zone. Could large deposits have formed here?



Ramelius Resources Rebecca-Roe Gold Project is only ~20km south, works to start 2026, mining 2028

PINJIN

GOLD PROJECT

Gold-mineralised rocks
hidden beneath
sediment cover

Next to major gold
development project

Strong newsflow as
19,000m of funded
drilling gets underway

 **Kalgoorlie** Gold Mining

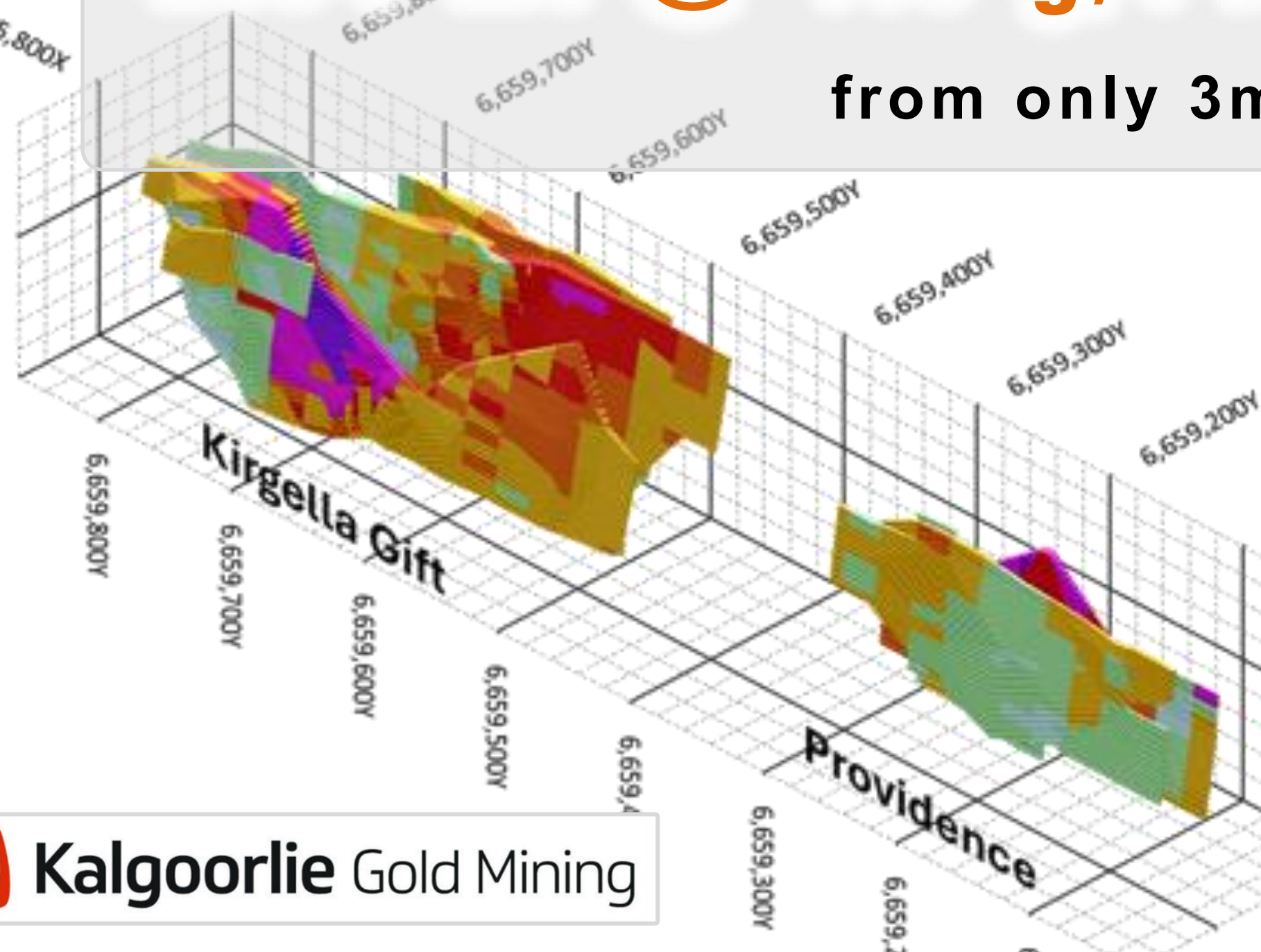


SHALLOW GOLD RESOURCE

Kirgella Gift and Providence resource focused on shallow ounces

2.34 Mt @ 1.0 g/t Au for 76,400 oz

from only 3m depth



Inferred JORC resource

Easy feed to nearby mills

Expandable to depth

BUT there is more upside in
new discoveries

EXTENSIVE DRILLING

Kirgella Gift and Providence infill and extensions for a bigger deposit?

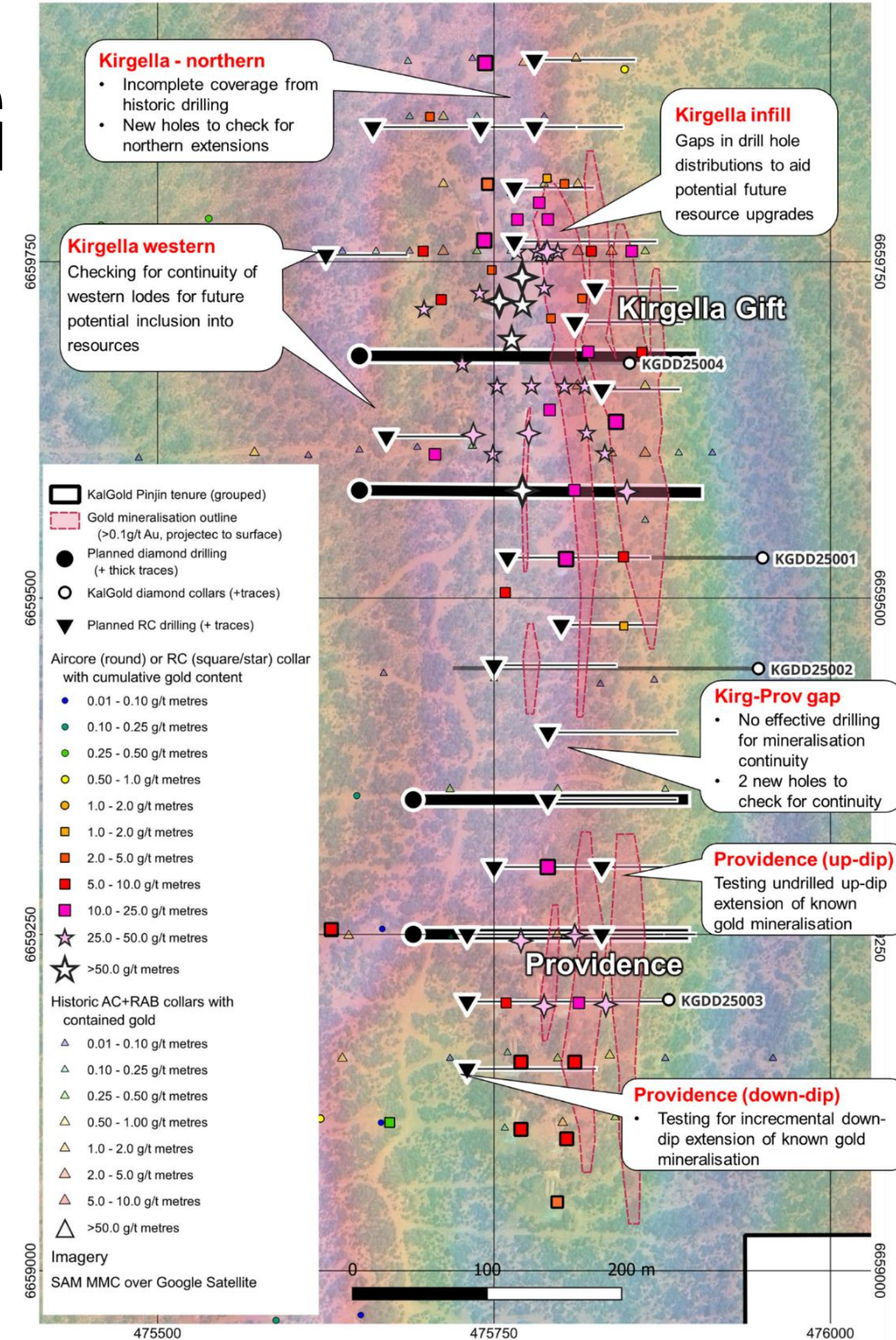
22 strategic RC drill holes (3,600m)

- extensions along strike and down-dip

4 diamond drill holes (1,800m)

- is the current resource just the beginning?
- drill 100-200m beneath known gold

PLUS there is more upside in **new discoveries**



EXTENSIVE DRILLING

For personal use only

Kirgella Gift and Providence infill and extensions for a bigger deposit?

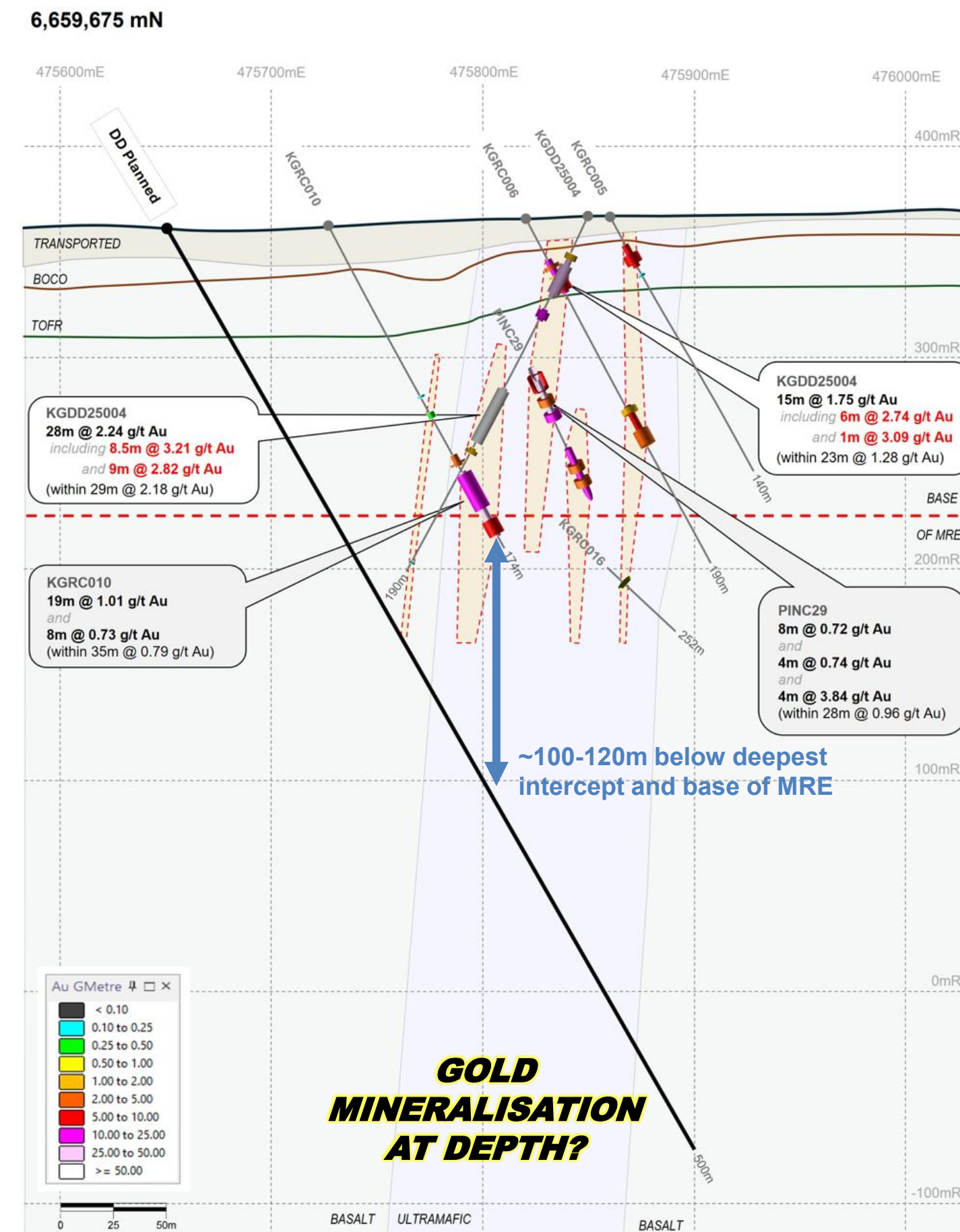
22 strategic RC drill holes (3,600m)

- extensions along strike and down-dip

4 diamond drill holes (1,800m)

- is the current resource just the beginning?
- drill 100-200m beneath known gold

PLUS there is more upside in **new discoveries**

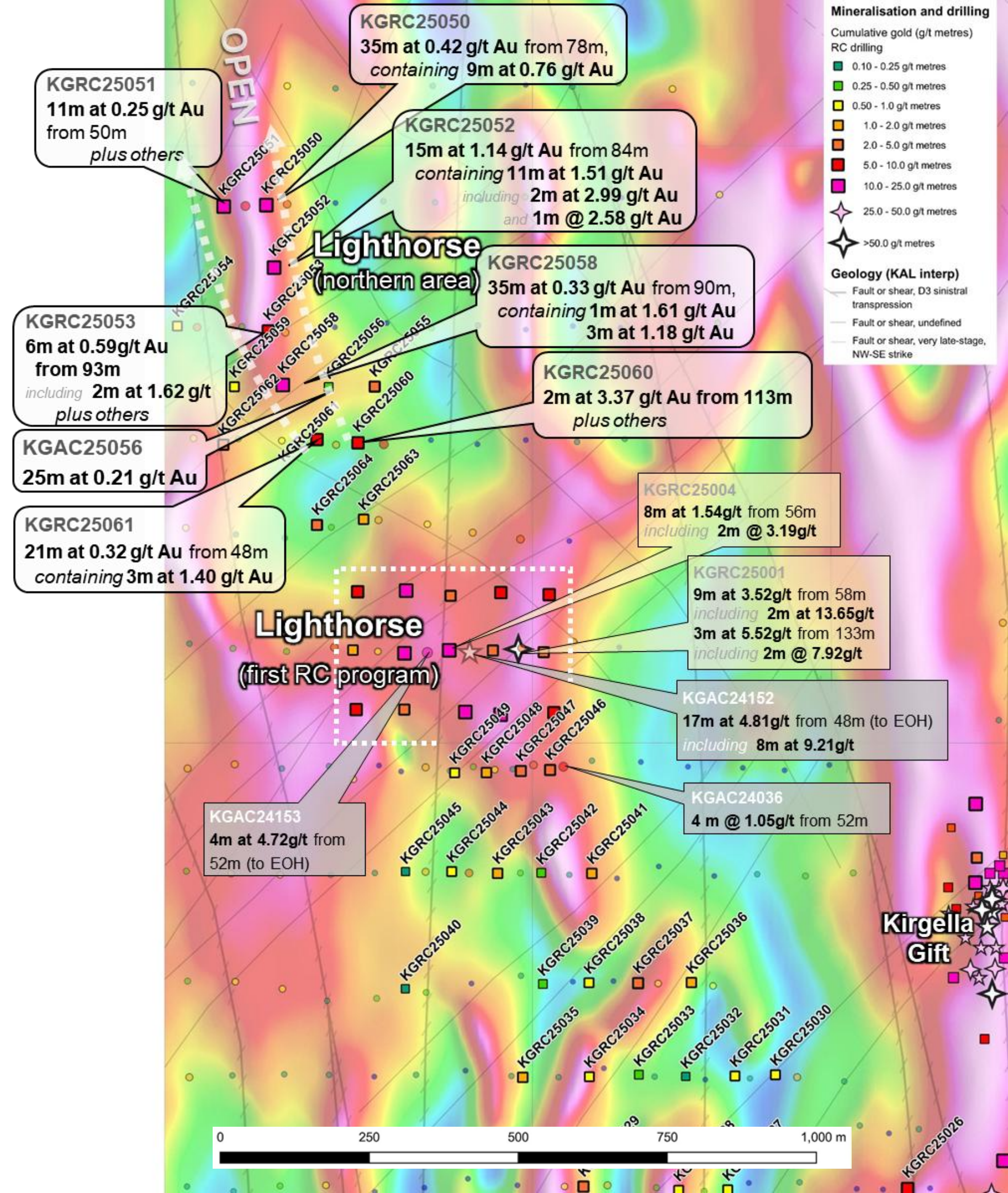


RECENT RESULTS

Thick RC intercepts beneath cover, correspond with conductivity highs

Results are evidence of a large-scale gold-mineralised system at Lighthouse

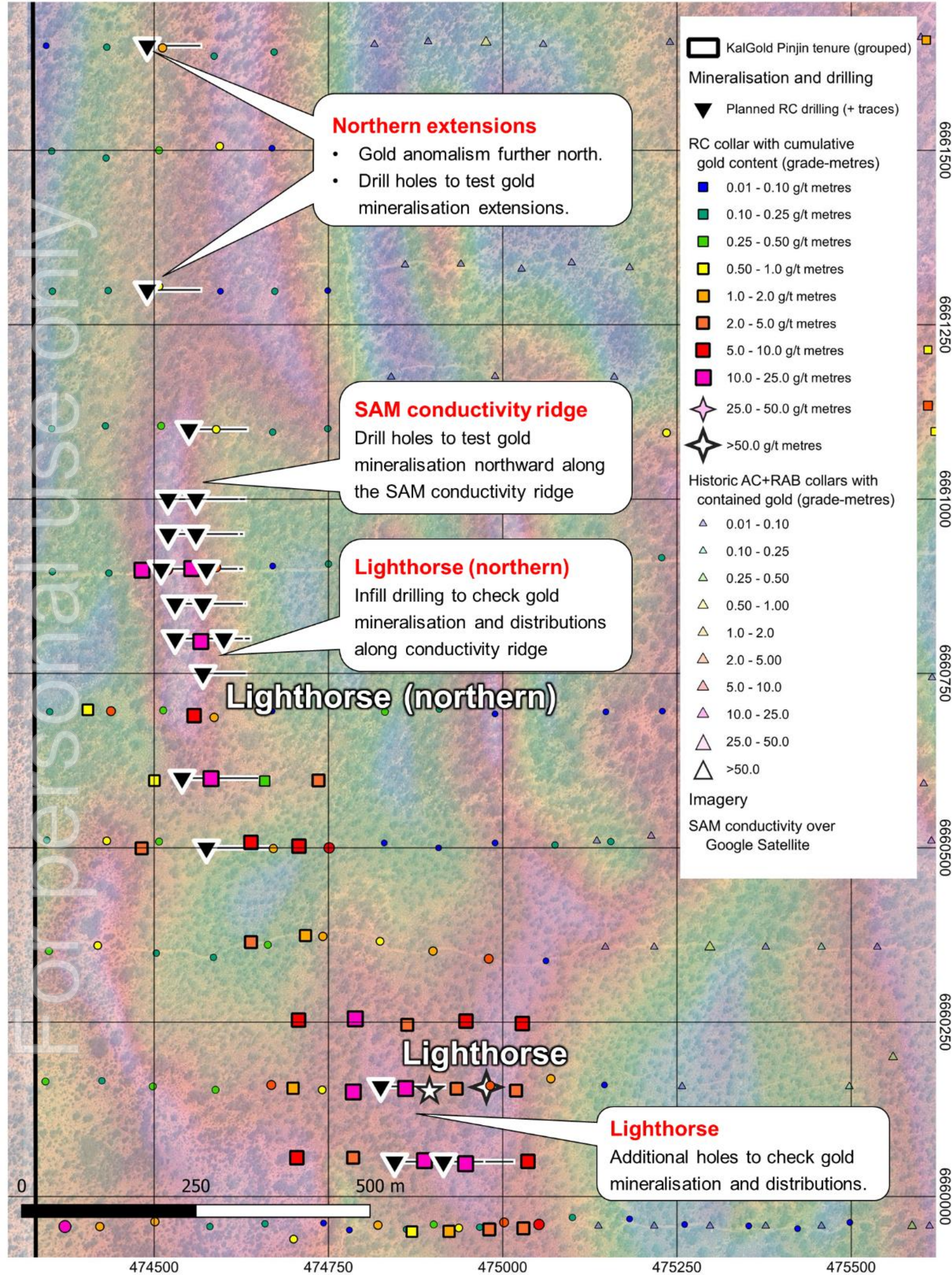
Wide spaced drilling has only started to understand the full extent of gold at Lighthouse



For personal use only

NEW RC DRILLING

Widely spaced drilling at **Lighthorse** testing extent of gold system.

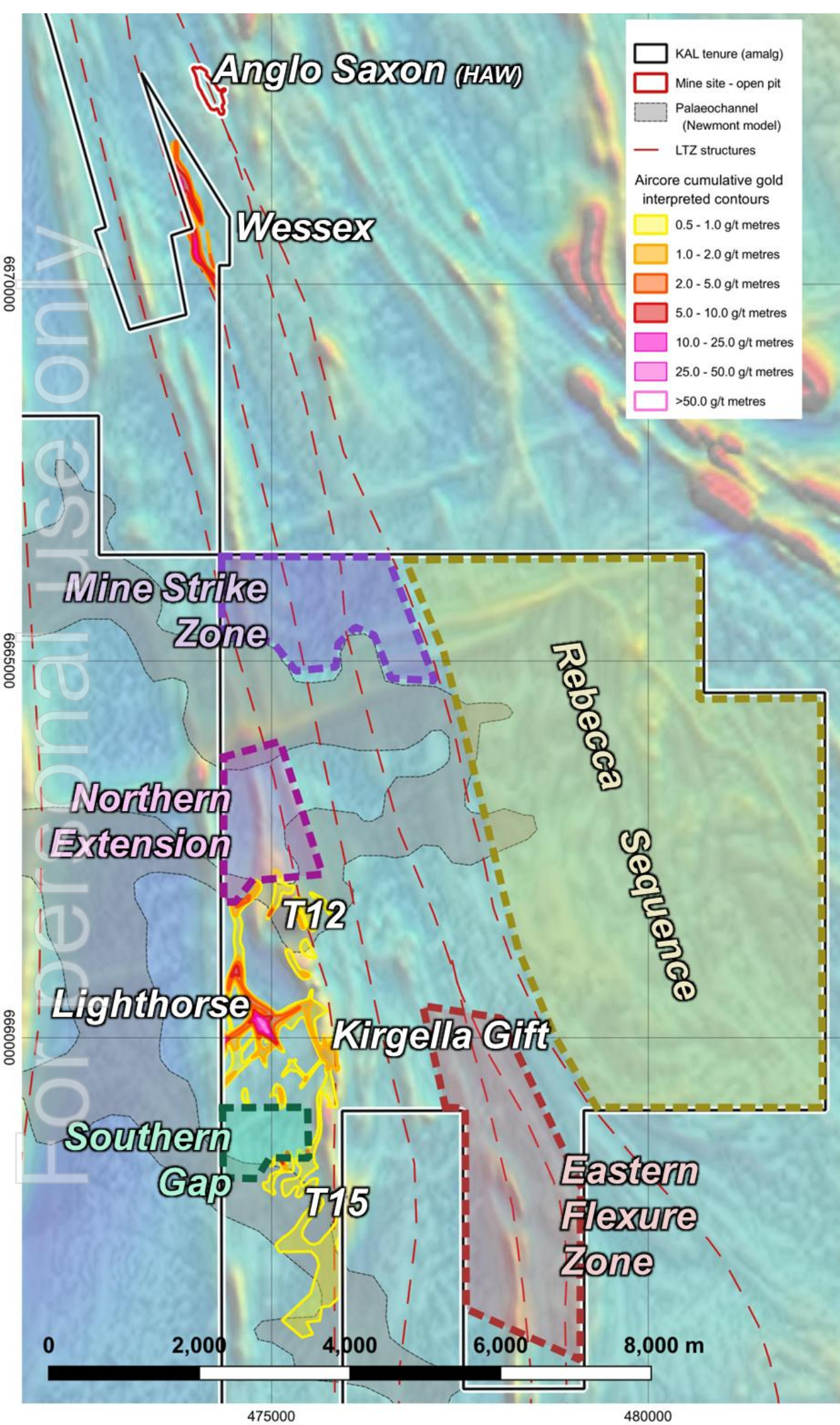


19 widely spaced **RC drill holes (3,200m)**

- extensions of the gold trend to the north
- down dip testing of near-surface gold mineralisation.
- along strike and down-dip

Lighthorse is a large gold system

- Has it formed **gold deposits** for mining?
- Systematic testing is ongoing...



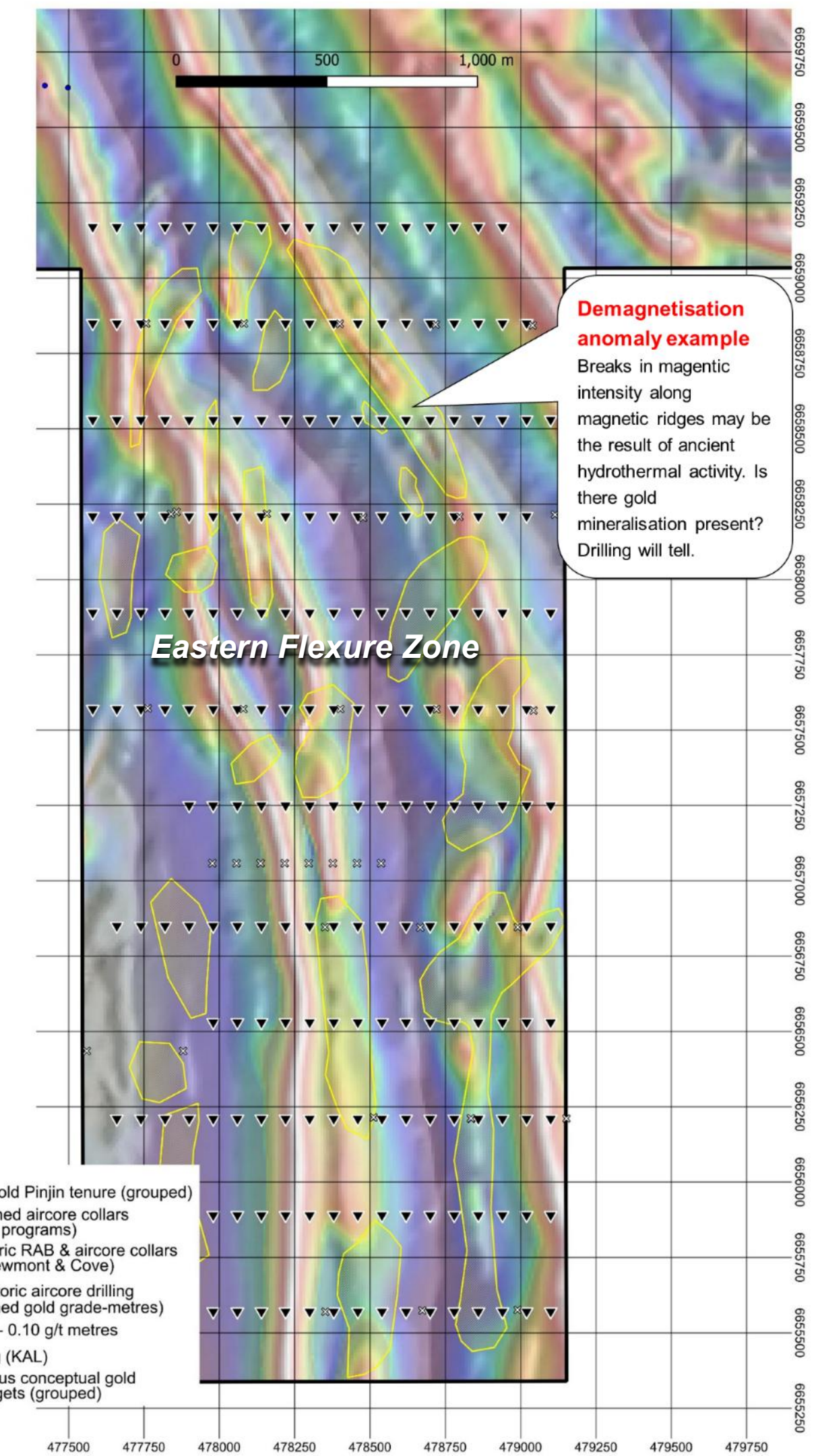
NEW TARGETS

Eastern Flexure Zone provides numerous geophysical targets

Wide-spaced first pass aircore drilling to test new targets in 10,750m aircore drill program

No outcrop

Never systematically tested



SYSTEMATIC EXPLORATION, TRANSFORMATIONAL OUTCOMES

Huge discovery potential, highly leveraged to gold price,
>200koz JORC resources near existing infrastructure

Large strategic footprint with multi-million ounce potential

Track record of discovery through money in the ground

Well-funded for extensive
exploration programs and more discovery

For personal use only