

FIRENZE DRILL TARGETS CONFIRMED; DRILL PERMITS SECURED - NEVADA, USA

HIGHLIGHTS

- **High-priority drill targets confirmed from target validation studies, including:**
 - Comprehensive CSAMT and drone magnetics geophysical surveys
 - Detailed structural & alteration mapping
 - Targeting led by Nevada experienced Altitude Principal Geologist (USA) Gabe Graf
- **Historical Surface rock chip samples include:**
 - **1,825 g/t Ag and 22.5 g/t Au**
 - **534 g/t Ag and 43.9 g/t Au**
 - **1,250 g/t Ag with 9.3 g/t Au**
- Undrilled low-sulphidation epithermal silver & gold system in Nevada, USA
- Nevada is ranked #1 jurisdiction in the world by the Fraser Institute
- **Targets defined along ~1.2km NW–SE structural corridor**
- **A 2,600m Reverse Circulation (RC) drill program has been designed to test multiple target depths from near surface to 250m depth**
- **Drill permits secured with the Bureau of Land Management (BLM)**
- **Access and drill site preparation (approx. 2 weeks) commencing early May**

“Firenze is a compelling, undrilled epithermal silver & gold system in Nevada, where multiple independent datasets point to a coherent mineralised system.

With strong surface results, well-defined structural targets and permitting secured, we are looking forward to testing the system at depth.”

- Duncan Chessell, Managing Director

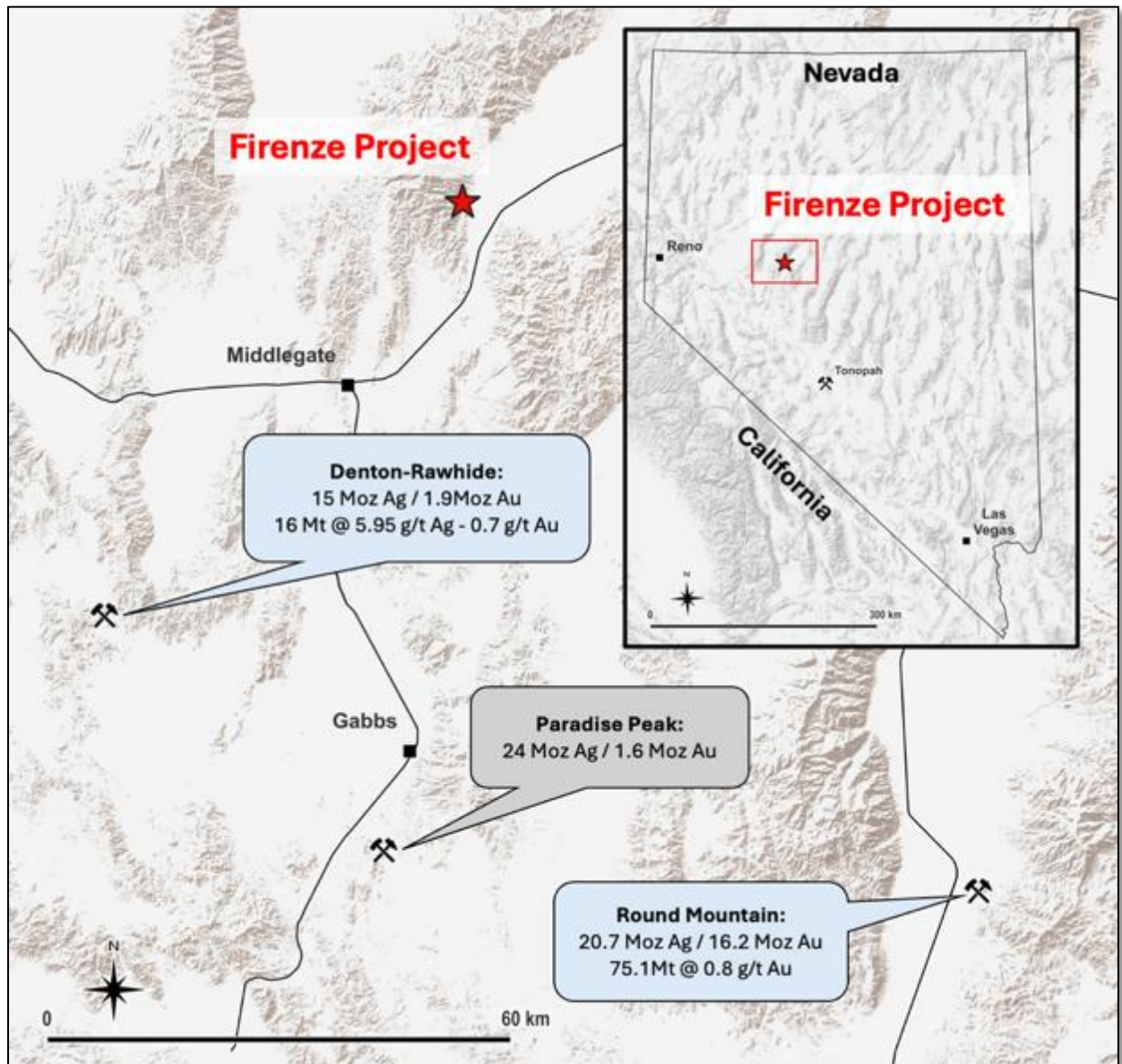
Location – Nevada, USA


Figure 1 Location of the Firenze Project and nearby deposits

The Firenze Project is in the Clan Alpine Mountains of Churchill County a 1-hour drive east of Fallon and 2 hours east of Reno, with nearby deposits

- **Paradise Peak Mine¹**, with past production between 1984-1994 of 1.6 Moz Au and 24.1 Moz Ag, owned by Almandex Minerals.
- **Round Mountain²** owned by Kinross Gold Corporation is actively mined by open pit heap leach and has produced 20.7 Moz Au, 16 Moz Ag to 2024. Current resources are 75.1 Mt @ 0.8 g/t Au.
- **Denton-Rawhide³** Operated by Rio Tinto between 1990 and 2003, produced 15 Moz Ag and 1.9 Moz Au using an open-pit heap leach operation. Now in C&M.

¹Paradise Peak Mine <https://www.almadexminerals.com/paradise>

²Round Mountain <https://www.kinross.com> and <https://minedocs.com/28/Kinross-Gold-AIF-2024.pdf>

³Rawhide <https://portergeo.com.au/database/mineinfo.php?mineid=mn1184>

For personal use only

Altitude Minerals Ltd (ASX: ATT) (Altitude or the Company) is pleased to advise that the 100% owned Firenze Ag-Au Project in Nevada, USA, is now drill-ready, with high-priority targets defined and permitting complete. Two weeks of earthworks will commence in early May to prepare access tracks and drill pads. Drill contract negotiations are underway.

The Company has completed extensive target validation, outlined below, since acquisition of the Firenze Project in late 2025 and integrated these data sets into a 3D model. Targeting was led by Altitude Principal Geologist (USA) Gabe Graf. Mr Graf was a member of the Newmont exploration team that discovered additional mineralised vein systems and added resources to the epithermal silver & gold Midas Mine (Nevada) using CSAMT (Controlled Source Audio-Frequency Magnetotellurics). The Midas low-sulfidation epithermal mineralisation (historical production of 2.2M ounces of gold and 27M ounces of silver at an average grade of @ 0.5 oz/ton or ~15.5g/t AuEQ⁴) has been used in a direct model comparison to Firenze.

The Firenze Project is prospective for high-grade vein-hosted silver & gold epithermal mineralisation (low-sulphidation) immediately below outcropping mineralised veins. For Altitude, this is a rare opportunity to test an undrilled epithermal system in one of the world's premier mining jurisdictions. Nevada is currently ranked #1 globally for mining investment attractiveness by the Fraser Institute, reflecting its established infrastructure, regulatory certainty and history of major discoveries.

⁴Midas <https://www.hecla.com/exploration/nevada-usa>

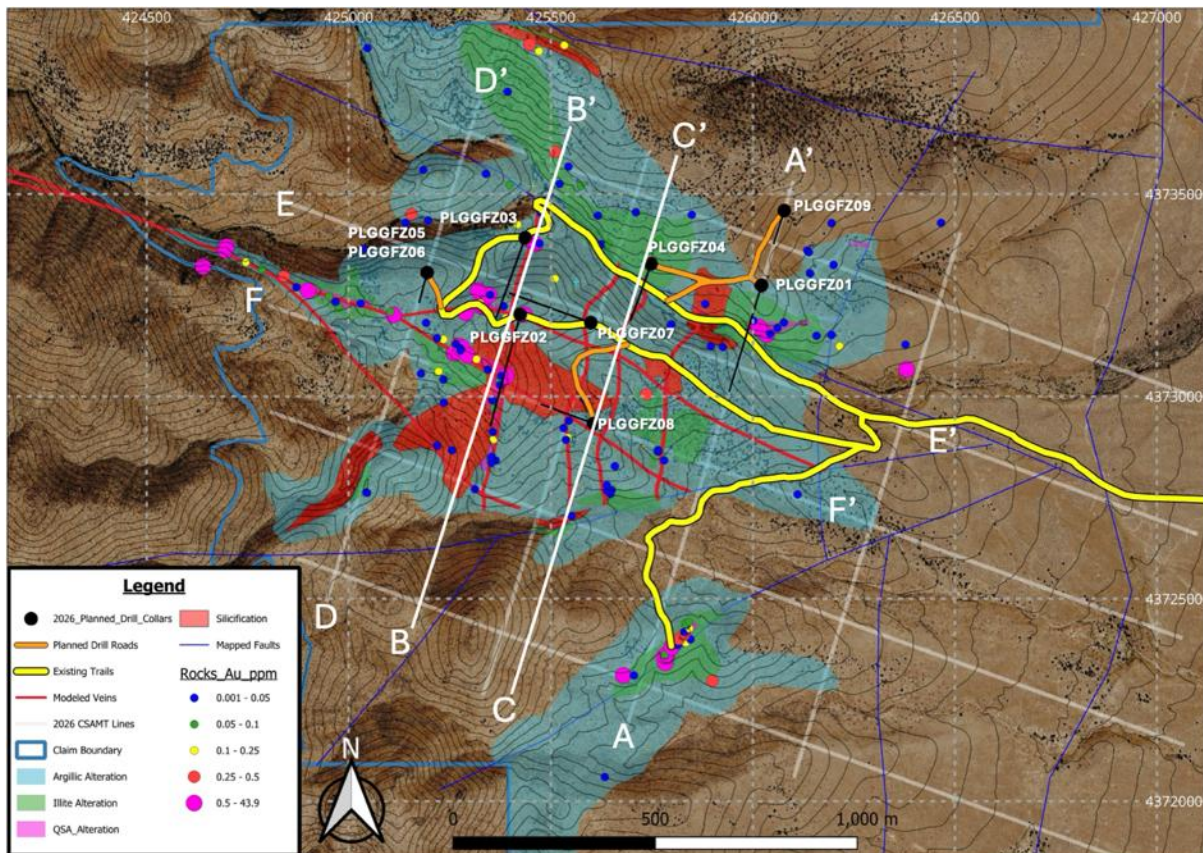


Figure 2 Planned drill collars (black traces) over alteration mapping and rock chips, CSAMT geophysics lines (white), background Google Earth; cross sections are annotated, e.g. A-A'.

For personal use only

Exploration Model and Surface Results

Geological, geophysical and geochemical work has defined a coherent low-sulphidation epithermal Au–exploration model supported by:

- Volcanic caldera geological environment
- High-grade surface geochemistry associated with quartz veining
- Quartz textures, including colloform and bladed calcite replacement
- Elevated Hg and Sb geochemistry and low base metals - consistent with upper epithermal levels
- Structural controls associated with extensional faulting and vein development
- Surface rock chip sampling returned:
 - 1,825 g/t Ag and 22.5 g/t Au
 - 534 g/t Ag and 43.9 g/t Au
 - 1,250 g/t Ag and 9.3 g/t Au

Altitude interprets the high silver-to-gold ratios and low base-metal concentrations indicate that the boiling zone, where gold would be expected to concentrate, is preserved below the surface. Drill holes have been designed to test both the near-surface and deeper structures. Alteration and vein textures suggest that the current erosional level is likely above the primary Au–Ag deposition (boiling) zone, supporting the need for drill testing at depth.

2026 Drill Program

A planned 2,600m RC drill program has been designed to test the highest-priority targets from near surface to a depth of 250m to determine if the boiling zone, where bonanza-grade mineralisation can occur, exists at depth.

- 9 drill holes for 2,600m of RC drilling
- Testing depths to 250m with angled holes
- Targeting NW–SE structural corridor, structural splays, and orthogonal vein systems.

Permitting and Next Steps

- Drill permits approved and bond lodged with the BLM
- Access and track work to commence early May 2026
- Drilling to follow, subject to final contract negotiations and rig availability

CSAMT Geophysics Confirms Drill Targets

A 2026 CSAMT survey has identified a major NW–SE trending structural corridor (~1.2km strike) interpreted as a flower structure, coincident with surface mineralisation.

Key features include:

- Resistivity boundaries defining fault architecture
- Low resistivity zones interpreted as hanging wall fracture alteration network
- Strong correlation with surface geochemistry

Drone magnetic data support this interpretation, highlighting a boundary between magnetic and demagnetised zones, interpreted as hydrothermal alteration along and into the HW of fault structures.

These datasets define multiple high-priority drill targets along the main structure and associated splays.

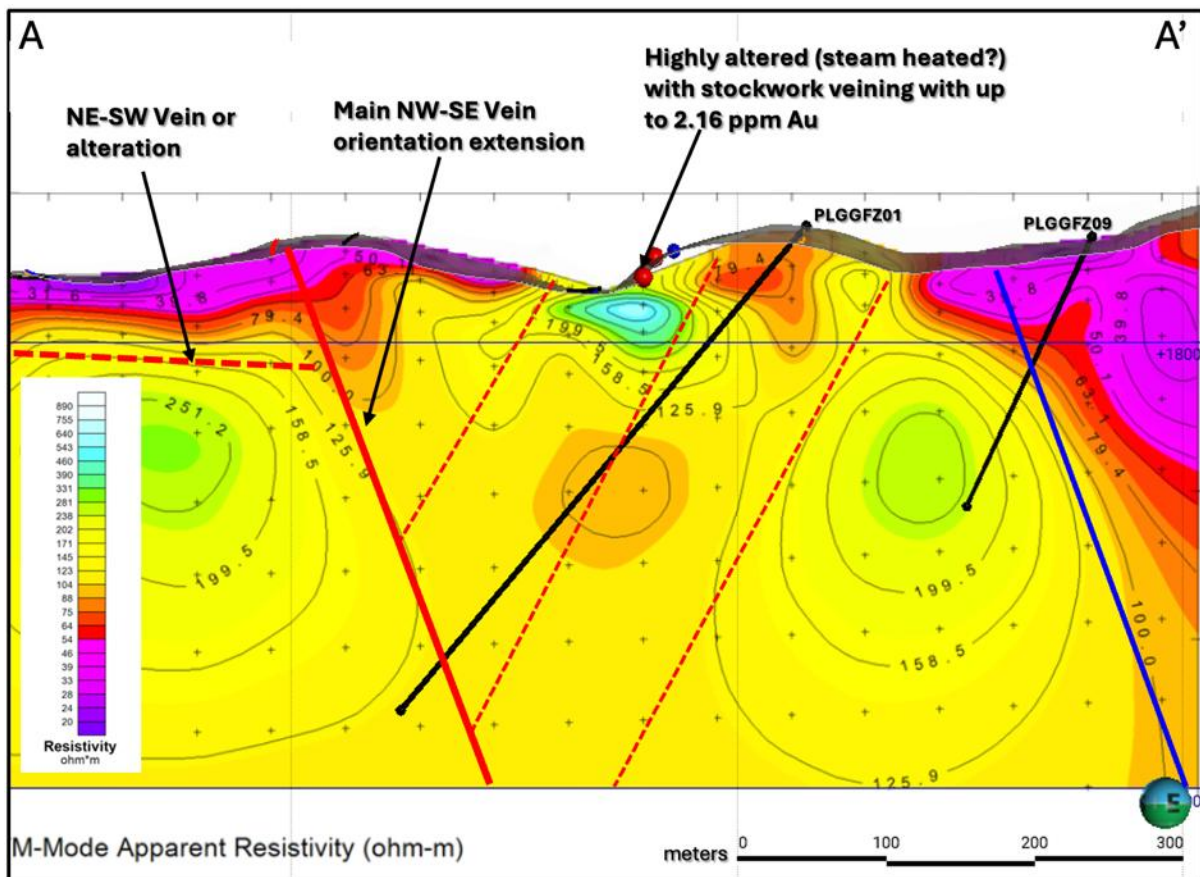


Figure 3 Cross-section A-A' refers to Figure 2 plan-view, interpretation and planned drill holes, red lines are faults mapped at surface with interpretation to depth using CSAMT, blue line is CSAMT interpretation with no surface expression.

For personal use only

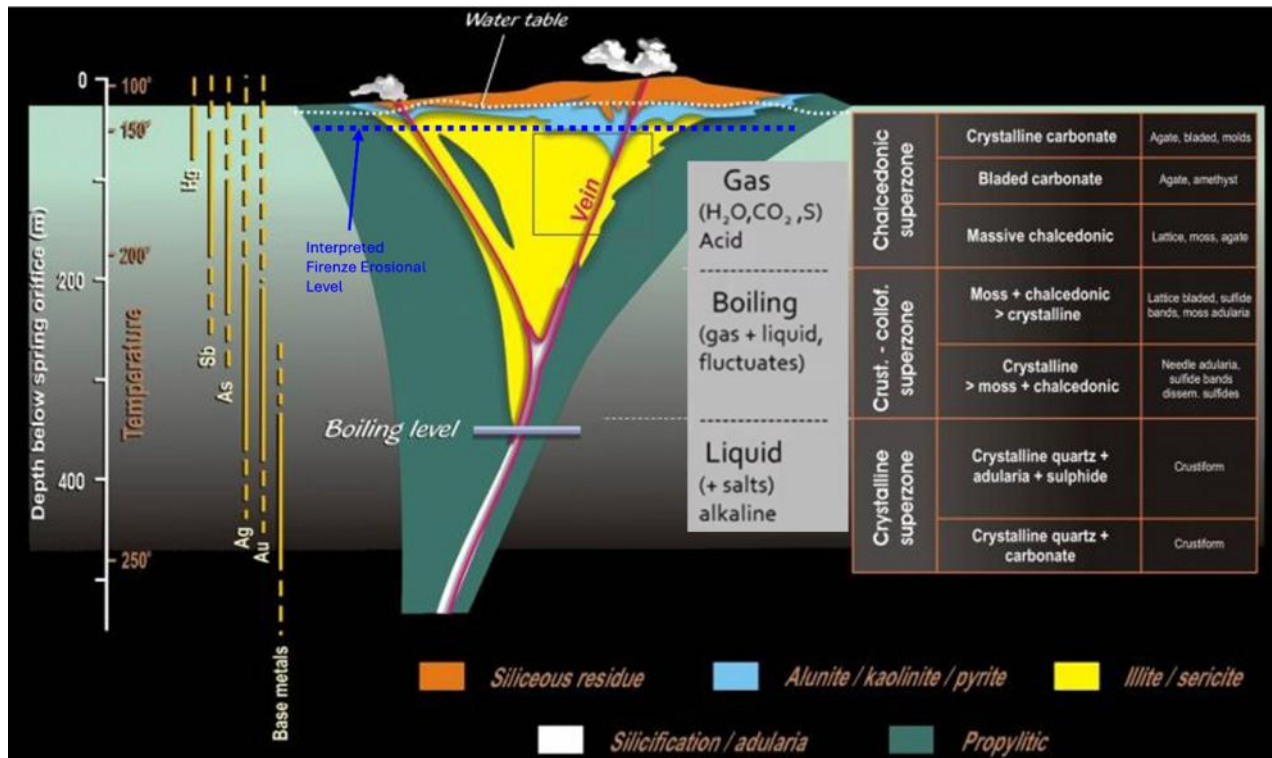
Epithermal Mineral Systems - Explainer


Figure 4 Epithermal mineralisation model from Morrison, Guoyi and Jaireth (1995), with interpreted Firenze current-day surface, demonstrating the importance of drill testing various targets from 50 to 250m below surface

Vertical metal zonation in low-sulphidation epithermal systems reflects fluid cooling and boiling events during ascent, driven by changes in pressure. Gold typically concentrates near the boiling zone, where pressure drop drives phase separation, destabilising Au-HS complexes and triggering efficient precipitation in quartz–adularia veins. That phase separation is critical: it causes loss of volatiles (CO₂, H₂S), changes pH/redox, and destabilises metal complexes, particularly for gold. **Silver is commonly more vertically and laterally distal**, deposited under cooler, more dilute conditions above and outward from the main boiling horizon. At greater depth, base metals (Cu–Pb–Zn) may appear. Near surface, pathfinders (As–Sb–Hg–Tl) dominate. Recognising this zonation helps vector toward the boiling zone, the key target for high-grade gold mineralisation.

For personal use only

Authorised for release by the Board of Altitude Minerals.

For further information, please contact us.

Duncan Chessell
Managing Director
dc@altitudeminerals.com
+61 414 804 055

Julian Harvey
Investor Relations
jh@altitudeminerals.com
+61 404 897 584

Altitude Minerals Ltd

Unlocking shareholder value with high-quality discoveries

Altitude Minerals Ltd (ASX: ATT) is an ASX-listed explorer with a pipeline of large-scale drill targets across multiple projects and commodities, most of which are all within geological domains containing established profitable mines. The key to executing Altitude Minerals' strategy is successfully identifying the best drill targets that can be made ready for drill testing with a few months of low-cost fieldwork. The Company has spent several years assembling a Board, Exploration Team, and group of commodity experts who have been involved in over \$100 billion worth of discoveries, to accelerate Altitude's mission.

Connect with us:

At Altitude Minerals, we take pride in communicating effectively with investors and aim to go beyond our ASX releases by providing videos, infographics, and podcasts. We encourage all our current shareholders and interested investors to follow us on social media and [subscribe to the Altitude email list](#) to stay informed about the latest updates via our website www.altitudeminerals.com

Head Office – Adelaide +61 414 80 40 55
21 Sydenham Road, Norwood SA 5067, Australia

JORC CODE (2012) Information

General comments

This report includes data from Government departments' websites and references historical reports that are publicly available and include merged geophysical data from federal or state-owned sources. References to neighbouring projects have been obtained from company websites, reports and/or public announcements referenced in the body of this report and/or listed below.

Abbreviations

Au = Gold, Ag = Silver, As = Arsenic, Sb = Antimony, Cu = Copper, K = Potassium, Pb = Lead, U = Uranium, Zn = Zinc

ppm = parts per million, ppb = parts per billion, kg/t = kilograms per tonne, g/t = grams per tonne, % = percentage; **1ppm = 1g/t**

oz = ounce, t = tonne, m = metre, km = kilometre

Competent Person Statement

The information in this report related to Exploration Results is based on data compiled by Mr Duncan Chessell, a member of the Australasian Institute of Mining and Metallurgy (MAusIMM) and Australian Institute of Geoscientists (MAIG). Mr Chessell is a full-time employee of the Company. As previously disclosed, Mr Chessell holds Shares, Performance Rights and Options in the Company. Mr Chessell has sufficient experience relevant to the style of mineralisation and type of deposit under consideration and to the activity being undertaken to qualify as a Competent Person as defined in the 2012 Edition of the 'Australian Code for Reporting of Exploration Results, Mineral Resources and Ore Reserves'. Mr Chessell consents to the inclusion in the report of the matters based on his information in the form it appears.

The Company confirms that it is unaware of any new information or data that materially affects the information cross referenced in this announcement. The Company confirms that the form and context in which the Competent Person's findings are presented have not been materially modified from the original announcements.

Property Ownership

Altitude Minerals Ltd has purchased the property outright from Orogen Royalties Inc (TSXV: OGN). A 3% Royalty (total) was granted to Orogen and its affiliates by Altitude with a 1% buydown provision for US\$1.5m (reducing the royalty to 2%). The fully granted BLM unpatented mineral claims allow for all forms of exploration, including drilling. No freehold land or other significant users have been identified in the due diligence to date. The 90 claims cover 7.4 km², claim numbers FZ01-FZ90; BLM numbers NV105835379 to NV105835468 were recorded on 19 May 2023 in a subsidiary of Orogen.

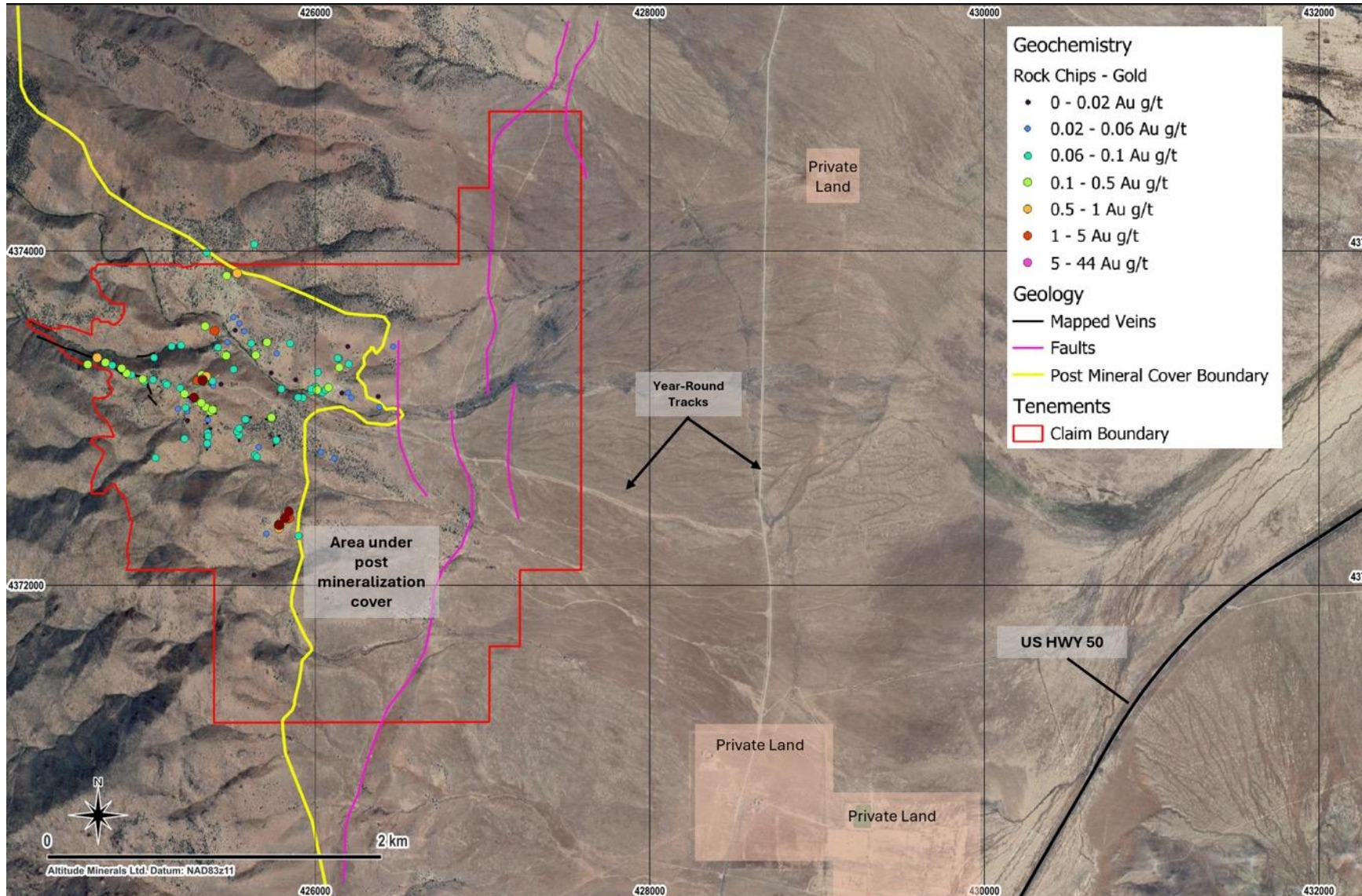
Significant Rock Chips – historical, ranked by Silver > 80g/t Ag

Sample ID	Year	Easting	Northing	Au_ppm	Ag_ppm	Sb_ppm	Pb_ppm	Zn_ppm
555157	2023	425328	4373225	22.50	1825	117	913	40
555167	2023	425275	4373124	9.26	1250	132	2240	12
555160	2023	425328	4373225	0.36	1160	61	163	17
590719	2023	425390	4373050	18.45	974	36	64	17
555164	2023	425321	4373261	5.18	896	31	168	10
555165	2023	425348	4373250	7.63	734	68	378	16
PM06-FC018	2006	425800	4372381	2.03	600	64	4	23
555159	2023	425328	4373225	43.90	534	154	898	108
555158	2023	425327	4373225	2.90	520	52	210	21
GXC6366BARK	unknown	425327	4373231	9.65	441	42	238	20
BPD38325_SUS	1988	425262	4373107	2.55	360	1		
555269	2023	425817	4372401	0.36	339	133	5	5
PM06-FC014	2006	425784	4372342	1.16	306	58	7	6
555179	2023	425784	4372360	0.77	271	106	6	5
PM06-FC006	2006	425112	4373201	1.12	270	23	38	26
555169	2023	424695	4373362	1.24	233	60	110	7
555181	2023	425784	4372359	0.63	228	142	5	7
590733	2023	425278	4373119	2.42	222	37	68	12
V916865	1991	425335	4373220	3.18	200	45	237	18
555267	2023	425783	4372360	0.58	179	113	8	9
GXC6371BARK	unknown	425282	4373121	1.24	172	8	82	8
590735	2023	425737	4373005	0.40	162	40	4	13
554865	2023	425787	4372359	0.96	158	150	8	30
554919	2023	425294	4373101	0.96	153	37	11	7
554859	2023	425328	4373223	1.17	150	33	115	10
590722	2023	425325	4373231	0.22	146	75	83	6
PM06-FC008	2006	424698	4373370	2.23	141	12	61	6
GXC6370BARK	unknown	425261	4373107	1.88	127	5	36	4
554858	2023	425290	4373207	1.14	100	20	48	16
BPD38324_SUS	1988	425436	4373203	1.03	99	1		
555163	2023	425324	4373225	17.70	98	193	512	235
554860	2023	425328	4373223	0.35	96	92	154	78
V916935	1991	424640	4373321	2.36	94	32	62	11
554861	2023	425328	4373223	0.18	92	46	66	37
BPD38327_SUS	1988	425900	4372297	0.27	85	18		
PM06-FC001	2006	425390	4373194	0.23	83	5	7	9

Significant Rock Chips – historical, ranked by Gold > 1g/t Au

Sample ID	Year	Easting	Northing	Au_ppm	Ag_ppm	Sb_ppm	Pb_ppm	Zn_ppm
555159	2023	425328	4373225	43.90	534	154	898	108
555157	2023	425328	4373225	22.50	1825	117	913	40
590719	2023	425390	4373050	18.45	974	36	64	17
555163	2023	425324	4373225	17.70	98	193	512	235
GXC6366BARK	unknown	425327	4373231	9.65	441	42	238	20
555167	2023	425275	4373124	9.26	1250	132	2240	12
555165	2023	425348	4373250	7.63	734	68	378	16
555164	2023	425321	4373261	5.18	896	31	168	10
V916865	1991	425335	4373220	3.18	200	45	237	18
555158	2023	425327	4373225	2.90	520	52	210	21
BPD38325_SUS	1988	425262	4373107	2.55	360	1		
590733	2023	425278	4373119	2.42	222	37	68	12
V916935	1991	424640	4373321	2.36	94	32	62	11
PM06-FC008	2006	424698	4373370	2.23	141	12	61	6
PM06-FC018	2006	425800	4372381	2.03	600	64	4	23
Q185907	2023	424695	4373361	1.92	58	36	25	4
GXC6370BARK	unknown	425261	4373107	1.88	127	5	36	4
555169	2023	424695	4373362	1.24	233	60	110	7
GXC6371BARK	unknown	425282	4373121	1.24	172	8	82	8
554859	2023	425328	4373223	1.17	150	33	115	10
PM06-FC014	2006	425784	4372342	1.16	306	58	7	6
554858	2023	425290	4373207	1.14	100	20	48	16
554864	2023	426035	4373153	1.14	3	21	15	54
PM06-FC006	2006	425112	4373201	1.12	270	23	38	26
590728	2023	426012	4373169	1.09	8	23	12	7
V916930	1991	426381	4373067	1.08	18	2	3	15
BPD38324_SUS	1988	425436	4373203	1.03	99	1		

For personal use only

Claims Map, Infrastructure, Significant structures and geological boundaries.


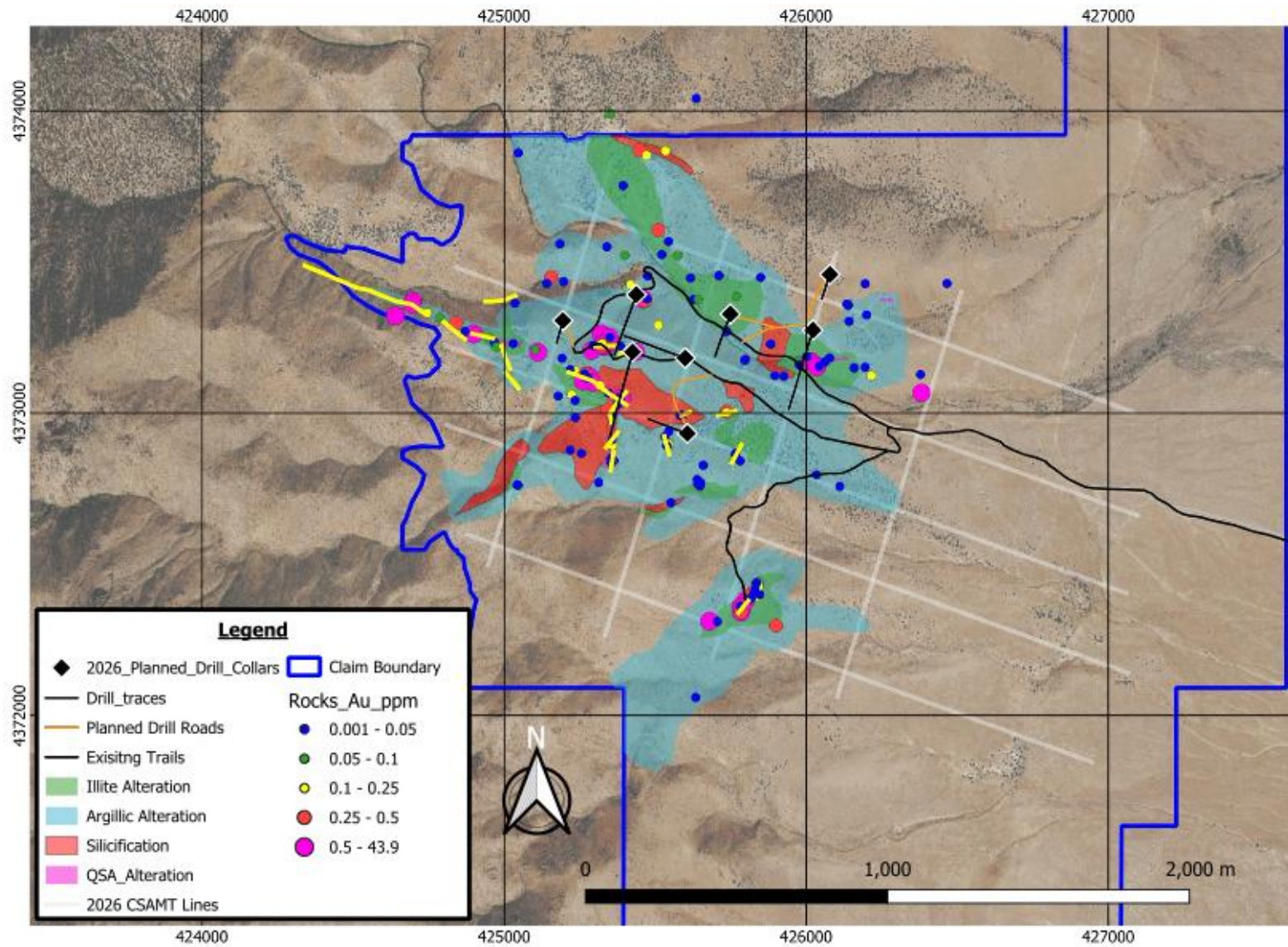


Figure 5 Planned drill collars with CSAMT lines (white)

personal use only

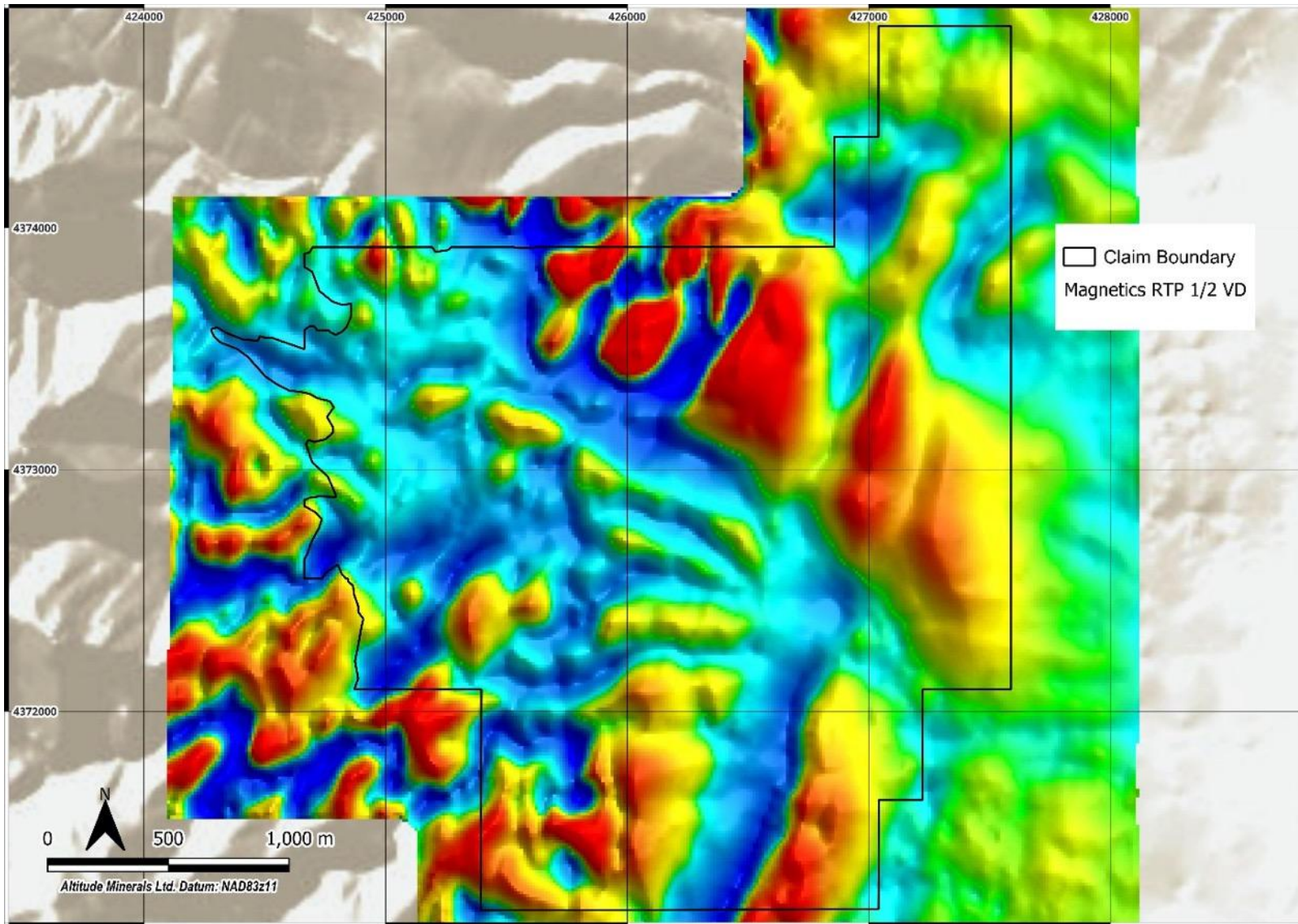


Figure 6 Drone magnetic survey 0.5VD RTP

personal use only

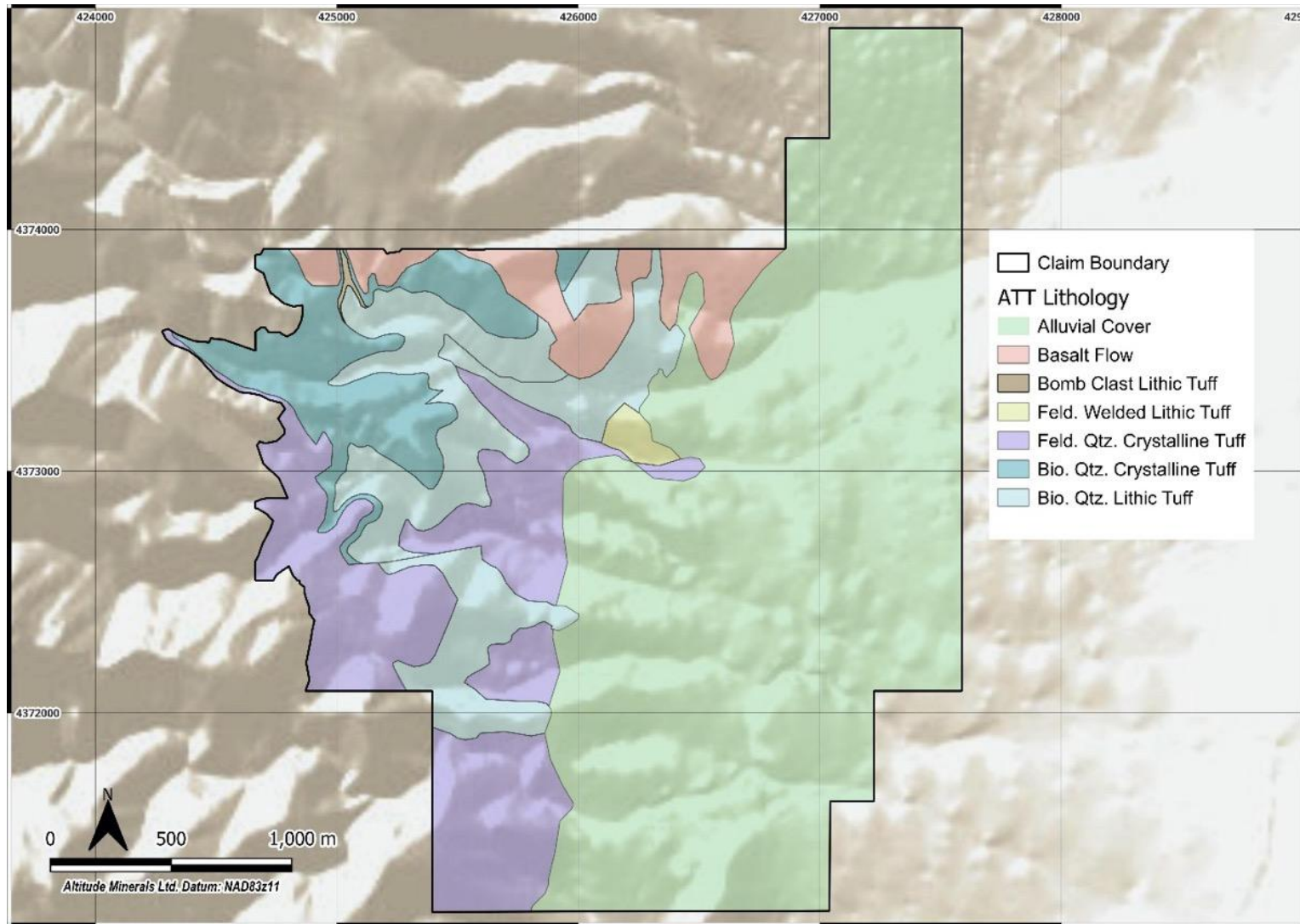


Figure 7 Altitude Minerals interpreted lithology (geology) over the Firenze project area.

personal use only

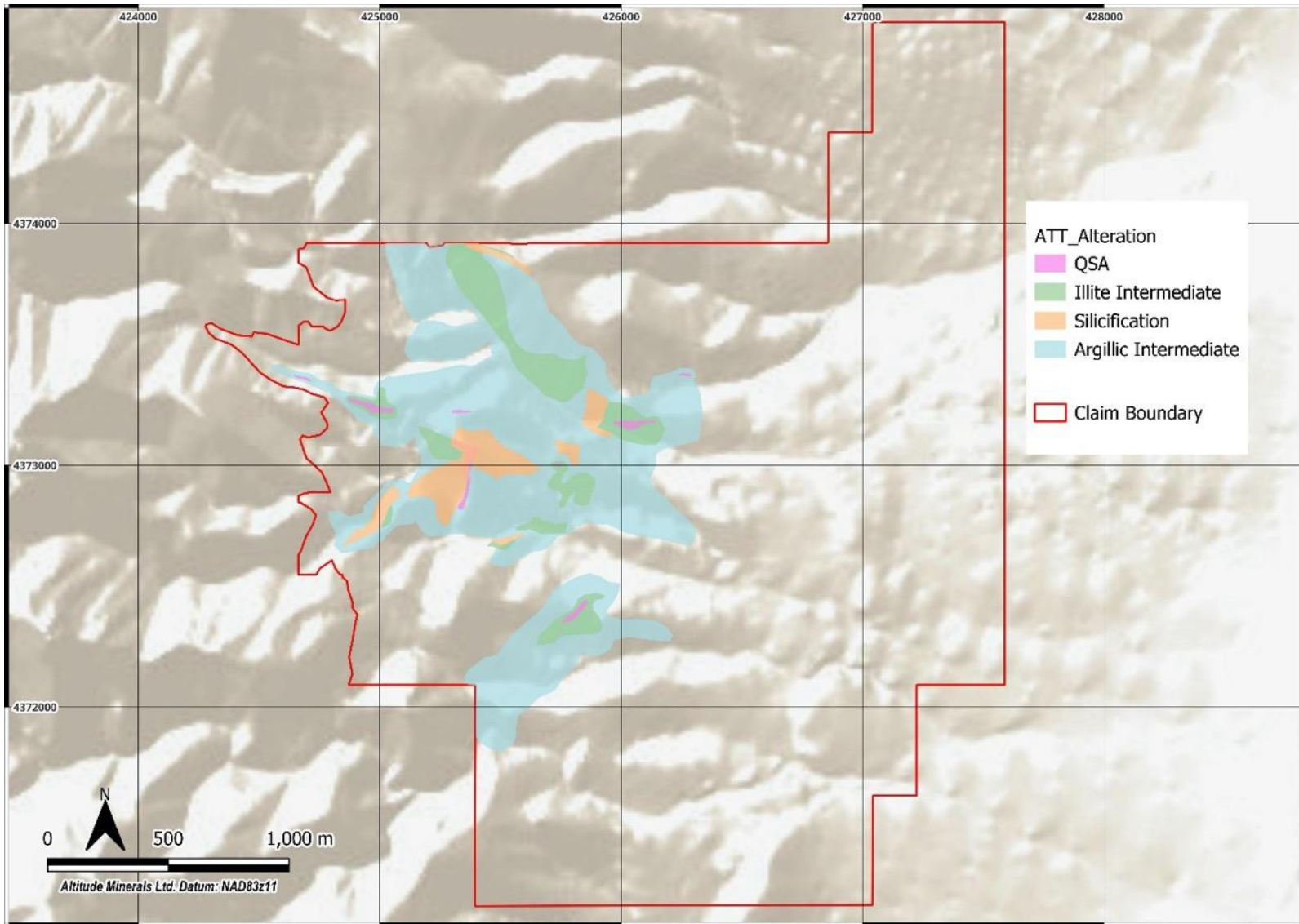
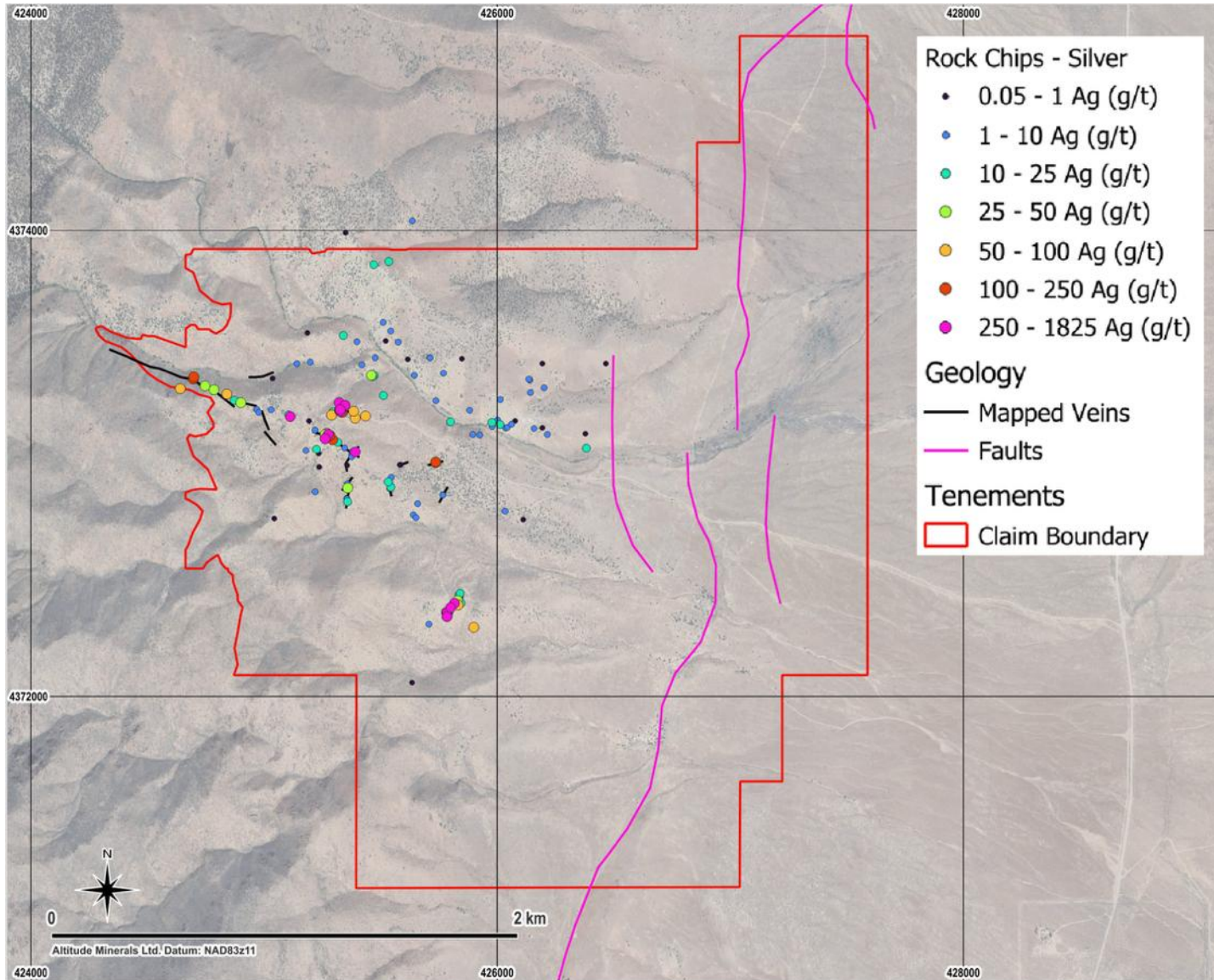
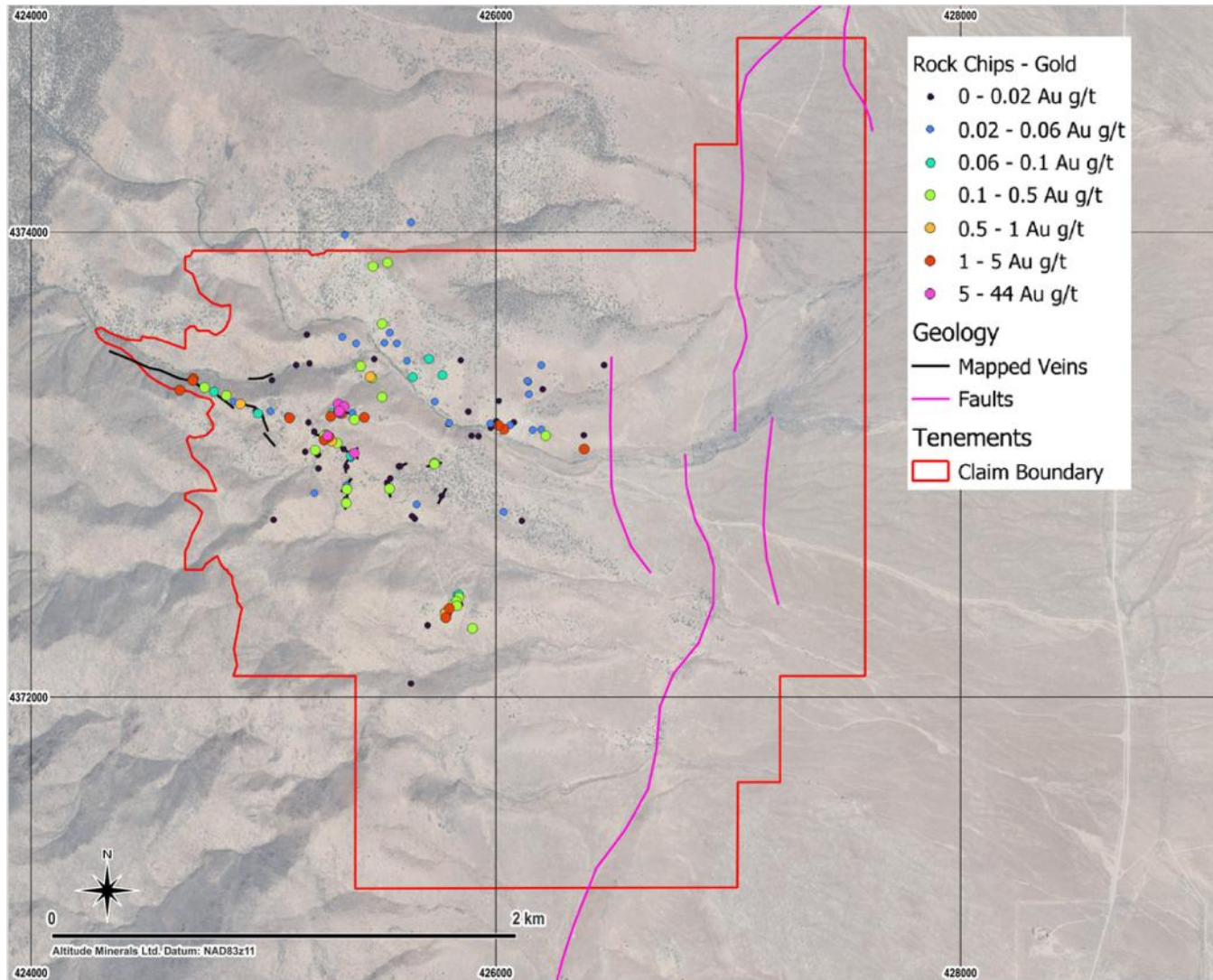


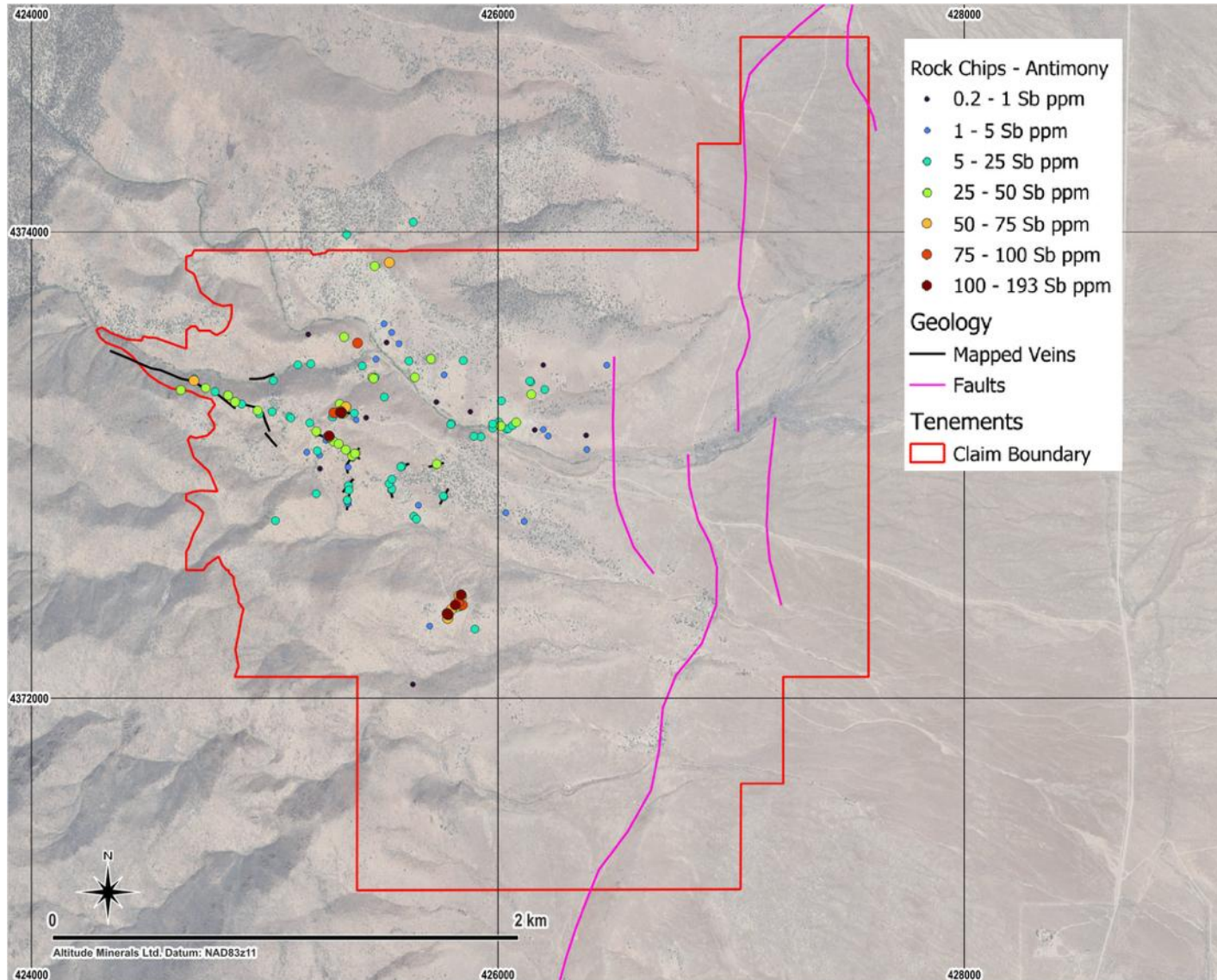
Figure 8 Altitude interpreted alteration map

personal use only

Geochemistry Map, Silver (Ag)


personal use only

Geochemistry Map, Gold (Au)


Geochemistry Map, Antimony (Sb)


Rock chip data Altitude 2025

SampleID	Year	Easting	Northing	Au_ppm	Ag_ppm	As_ppm	Sb_ppm	Zn_ppm	Comments
J419751	2025	425680	4372311	0.81	21.5	152.5	39.2	33	Float
J419752	2025	425342	4373010	0.33	11.8	5.3	7.9	6	Outcrop
J419753	2025	425235	4373141	0.13	25.1	8.4	24.8	8	Subcrop
J419754	2025	425765	4372864	0.01	0.8	4.5	15.1	6	Outcrop
J419755	2025	425640	4372767	0.01	0.5	11.3	4.4	12	Outcrop
J419756	2025	425313	4372771	0.02	3.8	6.1	17.7	5	Outcrop
J419757	2025	425046	4372762	0.02	0.4	37.9	10.9	28	Outcrop
J419758	2025	425156	4373450	0.37	65.5	15.5	8.2	64	Outcrop
J419759	2025	425648	4372759	0.01	1.9	15.8	14.3	22	Outcrop
J419760	2025	425256	4372867	0.02	2.9	28.3	16.4	18	Outcrop
J419761	2025	425448	4373869	0.35	1.7	59.1	9.3	24	Outcrop
J419762	2025	425394	4373753	0.01	2.7	6.4	12.1	34	Subcrop
J419763	2025	426016	4373171	2.16	36.5	19.0	27.3	8	Outcrop
J419764	2025	424697	4373358	0.5	90.6	8.7	40.4	7	Outcrop
J419765	2025	424952	4373247	0.07	10.4	9.7	33.6	15	Outcrop
J419766	2025	425360	4372972	0.1	20.6	13.8	22.7	32	Outcrop
J419767	2025	425357	4372993	0.09	5.0	8.0	24.4	7	Outcrop
J419768	2025	425364	4372842	0.01	2.2	13.1	22.2	14	Outcrop
J419769	2025	425047	4373861	0.01	0.2	7.3	4.5	60	Outcrop
J419777	2025	425552	4372704	0.05	0.2	44.8	4.4	79	Outcrop
J419853	2025	425626	4373376	0.01	2.1	32.5	48.2	32	Outcrop

The consistent presence of silver > gold supports the epi-thermal vertical zonation and preservation of the target boiling zone at depth. The Altitude geology team collected large samples, 1 to 4 kg, to ensure representative sampling and use for Terra Spec analysis to inform an alteration map.

Rock chip data historical (previously reported 13/10/2025)

Sample_ID	Year	Easting	Northing	Au_ppm	Ag_ppm	Sb_ppm	Pb_ppm	Zn_ppm
555157	2023	425328	4373225	22.50	1825	117	913	40
555167	2023	425275	4373124	9.26	1250	132	2240	12
555160	2023	425328	4373225	0.36	1160	61	163	17
590719	2023	425390	4373050	18.45	974	36	64	17
555164	2023	425321	4373261	5.18	896	31	168	10
555165	2023	425348	4373250	7.63	734	68	378	16
PM06-FC018	2006	425800	4372381	2.03	600	64	4	23
555159	2023	425328	4373225	43.90	534	154	898	108
555158	2023	425327	4373225	2.90	520	52	210	21
GXC6366BARK	unknown	425327	4373231	9.65	441	42	238	20
BPD38325_SUS	1988	425262	4373107	2.55	360	1		
555269	2023	425817	4372401	0.36	339	133	5	5
PM06-FC014	2006	425784	4372342	1.16	306	58	7	6
555179	2023	425784	4372360	0.77	271	106	6	5
PM06-FC006	2006	425112	4373201	1.12	270	23	38	26
555169	2023	424695	4373362	1.24	233	60	110	7
555181	2023	425784	4372359	0.63	228	142	5	7
590733	2023	425278	4373119	2.42	222	37	68	12
V916865	1991	425335	4373220	3.18	200	45	237	18
555267	2023	425783	4372360	0.58	179	113	8	9
GXC6371BARK	unknown	425282	4373121	1.24	172	8	82	8
590735	2023	425737	4373005	0.40	162	40	4	13
554865	2023	425787	4372359	0.96	158	150	8	30
554919	2023	425294	4373101	0.96	153	37	11	7
554859	2023	425328	4373223	1.17	150	33	115	10

Sample_ID	Year	Easting	Northing	Au_ppm	Ag_ppm	Sb_ppm	Pb_ppm	Zn_ppm
590722	2023	425325	4373231	0.22	146	75	83	6
PM06-FC008	2006	424698	4373370	2.23	141	12	61	6
GXC6370BARK	unknown	425261	4373107	1.88	127	5	36	4
554858	2023	425290	4373207	1.14	100	20	48	16
BPD38324_SUS	1988	425436	4373203	1.03	99	1		
555163	2023	425324	4373225	17.70	98	193	512	235
554860	2023	425328	4373223	0.35	96	92	154	78
V916935	1991	424640	4373321	2.36	94	32	62	11
554861	2023	425328	4373223	0.18	92	46	66	37
BPD38327_SUS	1988	425900	4372297	0.27	85	18		
PM06-FC001	2006	425390	4373194	0.23	83	5	7	9
PM06-FC019	2006	425784	4372342	0.28	75	60	6	67
V916877	1991	425834	4372392	0.23	69	20	8	7
555162	2023	425324	4373225	0.17	65	20	37	16
555259	2023	424841	4373298	0.30	62	38	14	39
Q185907	2023	424695	4373361	1.92	58	36	25	4
Q185903	2023	425384	4373223	0.04	55	15	16	23
PM06-FC016	2006	425830	4372412	0.35	47	97	16	213
555168	2023	424900	4373261	0.77	44	25	27	5
555166	2023	425460	4373377	0.74	41	40	69	30
Q185911	2023	425736	4373002	0.16	34	20	2	10
V916863	1991	425268	4373130	0.26	30	3	53	9
V916864	1991	425262	4373124	0.14	29	2	35	16
555170	2023	424786	4373316	0.09	27	24	14	8
555274	2023	425359	4372894	0.11	27	18	10	21
555258	2023	424746	4373332	0.13	26	39	29	10

Sample_ID	Year	Easting	Northing	Au_ppm	Ag_ppm	Sb_ppm	Pb_ppm	Zn_ppm
555177	2023	425782	4372362	0.21	25	105	14	23
590726	2023	425534	4373868	0.16	23	62	16	23
555263	2023	425223	4373062	0.22	22	25	29	7
590720	2023	425386	4373050	0.01	22	33	79	8
590716	2023	425976	4373176	0.06	21	23	4	5
555255	2023	425351	4373251	0.02	21	16	6	36
GXC6368BARK	unknown	425296	4373224	0.08	21	85	19	232
Q185908	2023	425340	4373550	0.03	19	40	12	24
590721	2023	425466	4373373	0.39	18	37	78	6
V916930	1991	426381	4373067	1.08	18	2	3	15
555161	2023	425324	4373225	0.32	17	18	20	2
555187	2023	425543	4372898	0.14	17	20	11	10
V916932	1991	425471	4373853	0.19	16	36	20	20
PM06-FC015	2006	425846	4372400	0.01	15	99	20	385
555182	2023	425837	4372437	0.04	14	42	29	7
555171	2023	425104	4373209	0.06	14	20	12	12
PM06-FC004	2006	425357	4372836	0.11	13	2	10	19
GXC6367BARK	unknown	425325	4373230	0.13	12	7	8	8
555273	2023	425532	4372922	0.02	12	12	9	21
590729	2023	426011	4373169	0.05	11	44	16	75
555271	2023	425842	4372443	0.07	11	103	12	7
590714	2023	425799	4373178	0.05	11	17	4	19
Q185906	2023	425511	4373291	0.11	11	10	18	77
555262	2023	425317	4373092	0.12	11	33	4	2
555256	2023	425472	4373378	0.03	11	24	15	14
555257	2023	424871	4373270	0.04	10	37	7	6

Sample_ID	Year	Easting	Northing	Au_ppm	Ag_ppm	Sb_ppm	Pb_ppm	Zn_ppm
555260	2023	424968	4373234	0.01	9	31	11	20
PM06-FC013	2006	425843	4372427	0.17	9	39	6	2
590734	2023	425277	4373119	0.03	9	10	28	51
554920	2023	425375	4373038	0.06	8	29	17	7
PM06-FC007	2006	424976	4373220	0.06	8	8	21	16
590723	2023	425399	4373522	0.06	8	91	6	13
590728	2023	426012	4373169	1.09	8	23	12	7
PM06-FC022	2006	426034	4372796	0.04	8	3	8	28
V916862	1991	425266	4373130	0.05	7	4	16	25
554862	2023	425926	4373122	0.02	7	12	18	49
555272	2023	425651	4372769	0.01	7	13	72	19
PM06-FC011	2006	425538	4372893	0.05	7	4	6	3
555184	2023	425834	4372439	0.07	6	58	5	3
V916871	1991	426215	4373124	0.14	6	1	8	7
590731	2023	425278	4373115	0.02	6	4	18	38
590727	2023	425831	4372418	0.03	6	27	22	7
Q185909	2023	425818	4372389	0.02	6	40	21	23
PM06-FC012	2006	425659	4372828	0.03	6	3	3	4
590732	2023	425278	4373114	0.02	6	5	27	50
555183	2023	425835	4372439	0.01	5	18	7	6
PM06-FC002	2006	425375	4373028	0.05	5	3	9	9
PM06-FC005	2006	425354	4372836	0.02	4	2	3	15
555188	2023	425357	4372912	0.03	4	16	14	42
V916936	1991	425511	4373605	0.40	4	2	8	27
555180	2023	425783	4372363	0.10	4	131	23	65
590715	2023	425797	4373175	0.00	4	5	20	66

Sample_ID	Year	Easting	Northing	Au_ppm	Ag_ppm	Sb_ppm	Pb_ppm	Zn_ppm
555178	2023	425783	4372361	0.04	4	19	16	23
555174	2023	425219	4372878	0.05	4	11	30	26
V916869	1991	426158	4373150	0.04	4	1	12	35
554866	2023	425711	4373455	0.07	4	31	11	11
555173	2023	425345	4373066	0.02	3	32	15	16
Q185901	2023	425896	4373124	0.02	3	11	12	34
555261	2023	425030	4373230	0.04	3	11	40	27
GXC6369BARK	unknown	425295	4373225	0.03	3	8	9	32
554864	2023	426035	4373153	1.14	3	21	15	54
PM06-FC009	2006	425418	4373425	0.13	3	6	19	35
590709	2023	426200	4373325	0.01	3	18	19	34
555190	2023	425354	4372849	0.01	3	22	1	8
554918	2023	425219	4373144	0.02	3	32	14	18
554868	2023	425711	4373455	0.05	3	20	11	25
590711	2023	425197	4373435	0.01	2	11	23	44
555191	2023	426013	4373275	0.01	2	21	24	55
590707	2023	426139	4373357	0.04	2	23	20	21
555189	2023	425354	4372851	0.01	2	19	1	4
GXC6365BARK	unknown	425179	4373057	0.02	2	2	7	2
554863	2023	425977	4373159	0.01	2	14	23	120
555266	2023	426002	4373187	0.00	2	11	14	37
590706	2023	426142	4373304	0.04	2	26	34	122
Q185904	2023	425643	4373377	0.06	2	41	12	30
PM06-FC010	2006	425545	4372940	0.02	2	6	5	14
GXC6373BARK	unknown	425769	4373387	0.09	2	1	6	2
590708	2023	426135	4373361	0.03	2	18	17	143

Sample_ID	Year	Easting	Northing	Au_ppm	Ag_ppm	Sb_ppm	Pb_ppm	Zn_ppm
590730	2023	425278	4373116	0.01	2	4	21	61
555264	2023	426043	4373155	0.02	2	25	11	17
PM06-FC017	2006	425814	4372386	0.01	2	5	16	85
PM06-FC020	2006	425828	4372409	0.02	2	29	16	18
555268	2023	425706	4372311	0.01	2	3	23	133
BPD83016_SUS	1990	425882	4373228	0.01	2	1		
554867	2023	425711	4373455	0.02	2	22	12	20
V916866	1991	425544	4373568	0.05	2	2	12	67
BPD38326_SUS	1988	425736	4373271	0.02	2	1		
V916867	1991	425575	4373521	0.06	2	1	9	11
590713	2023	425141	4373429	0.01	1	5	24	72
V916931	1991	425636	4374041	0.03	1	11	10	29
V916876	1991	425475	4373454	0.01	1	2	13	14
555265	2023	426061	4373169	0.03	1	23	26	19
555185	2023	425767	4372864	0.00	1	17	10	25
555186	2023	425639	4372781	0.00	1	10	11	28
GXC6372BARK	unknown	425378	4373051	0.01	1	1	5	8
PM06-FC021	2006	426111	4372758	0.01	1	2	10	35
Q185902	2023	425583	4372993	0.00	1	13	10	10
590718	2023	425766	4372868	0.00	1	11	10	22
Q185910	2023	425044	4372763	0.02	1	7	14	32
555172	2023	425192	4373182	0.01	1	6	20	39
590712	2023	425036	4373364	0.00	1	14	24	43
590717	2023	425587	4372994	0.01	1	17	5	5
Q185905	2023	425617	4373447	0.02	1	19	14	12
PM06-FC003	2006	425356	4372991	0.01	1	2	3	5

Sample_ID	Year	Easting	Northing	Au_ppm	Ag_ppm	Sb_ppm	Pb_ppm	Zn_ppm
V916870	1991	426195	4373152	0.03	1	1	9	6
554921	2023	426077	4373183	0.01	1	36	9	20
V916874	1991	425350	4373990	0.06	1	10	11	14
554857	2023	425849	4373449	0.01	1	9	11	44
V916868	1991	425522	4373525	0.04	1	1	14	10
V916872	1991	426378	4373128	0.01	1	0	11	4
V916873	1991	426466	4373429	0.01	0	2	15	2
V916933	1991	425235	4373042	0.01	0	1	14	55
BPD83017_SUS	1990	426195	4373428	0.02	0	1		
V916934	1991	425236	4372985	0.01	0	1	13	52
590710	2023	425634	4372060	0.00	0	1	11	5
V916875	1991	425185	4373560	0.01	0	0	24	58

Sample location coordinates are referenced to NAD83 / UTM Zone 11N projection.

JORC Code, 2012 Edition – Table 1 report
Section 1 Sampling Techniques and Data

(Criteria in this section apply to all succeeding sections.)

Criteria	JORC Code explanation	Commentary
<i>Sampling techniques</i>	<ul style="list-style-type: none"> <i>Nature and quality of sampling (eg cut channels, random chips, or specific specialised industry standard measurement tools appropriate to the minerals under investigation, such as down hole gamma sondes, or handheld XRF instruments, etc). These examples should not be taken as limiting the broad meaning of sampling.</i> 	<ul style="list-style-type: none"> This report summarises the material work completed since acquisition by Altitude Minerals and all known prior exploration. Altitude’s work included CSAMT and drone magnetics geophysical surveys, alteration mapping, structural mapping and rock chip sampling. No drilling has occurred on the property. As per the ASX announcement to which this table is appended, Altitude Minerals Ltd purchased the Firenze Claims from Orogen Royalties and completion occurred as per ASX Announcement 5 November 2025. The work conducted by Orogen (vendor) is described in more detail than other historical work. Orogen: 96 rock chips (mixture of outcrop, and re-sampling old trenches) were collected in 2023 and processed using a company technical work guideline (TWG), including a TWG for sample collection and sample submission to a certified laboratory. QAQC samples (standards, blanks and duplicates) are inserted into the sequence using ratios set out in the sub-sampling techniques section below. Historical Work Statement No annual technical reports are required to be lodged with the state in Nevada and prior to 1987 production records are digitised. No drilling is recorded on the claims or reported in historical reports. The Federal Bureau of Land Management declared a Wilderness Study Area (WSA) between 1980 and December 2022 over the western area of the project (uphill). This precluded ground disturbing activities such as drilling or mining activities aside rock chip collection. Consequently, only minor surface sampling programs were conducted. Altitude cannot attest the nature or accuracy of this previous work although it was

personal use only

Criteria	JORC Code explanation	Commentary
		<p>undertaken by established mining & exploration companies it is reasonable to assume that the work was conducted to industry standards of the time.</p> <p>A site visit by Altitude staff including the author and Orogen geologists in 2025 noted evidence of small workings of likely circa 1866 when historical reports of exploratory mining occurred; which included two adits ~ 10m at the and four shallow shafts on the top of the ridge, no historical production records are known but the limited workings suggest these were of exploratory nature. A series of shallow 2m deep exploratory trenches of north-south orientation on the main east west ridge. Some these trenches have been spot sampled by Orogen and reported in this document. No historical records of the trenches exist and are likely to be >45 years prior to the declaration of a Wilderness Study Area in 1980. Altitude notes the historical workings (trenches, adits & shafts) were conducted at the topographic high on the ridge and no drilling or meaningful sampling of the potential epithermal veins 10m below the surface has been undertaken.</p> <p><u>This Statement holds for all subsequent sections of this Table.</u></p>
	<ul style="list-style-type: none"> • <i>Include reference to measures taken to ensure sample representivity and the appropriate calibration of any measurement tools or systems used.</i> 	<ul style="list-style-type: none"> • <u>Altitude</u>: Rock chips were collected and processed using a company technical work guideline for sample collection to ensure representivity. • <u>Historical work</u>: see historical work statement above.
	<ul style="list-style-type: none"> • <i>Aspects of the determination of mineralisation that are Material to the Public Report.</i> 	<ul style="list-style-type: none"> • At this stage of exploration, no modifying factors or limitations are known.
	<ul style="list-style-type: none"> • <i>In cases where 'industry standard' work has been done this would be relatively simple (eg 'reverse circulation drilling was used to obtain 1 m samples from which 3 kg was pulverised to produce a 30 g charge for fire assay'). In other cases more explanation may be required, such as where there is coarse gold that has inherent sampling problems. Unusual commodities or mineralisation types (eg submarine nodules) may warrant disclosure of detailed information.</i> 	<ul style="list-style-type: none"> • <u>Altitude</u>: No drilling is reported. • <u>Orogen</u>: No drilling is reported. • <u>Historical work</u>: See historical work statement above.

Criteria	JORC Code explanation	Commentary
<i>Drilling techniques</i>	<ul style="list-style-type: none"> • <i>Drill type (eg core, reverse circulation, open-hole hammer, rotary air blast, auger, Bangka, sonic, etc) and details (eg core diameter, triple or standard tube, depth of diamond tails, face-sampling bit or other type, whether core is oriented and if so, by what method, etc).</i> 	<ul style="list-style-type: none"> • <u>Altitude</u>: No drilling conducted • <u>Orogen</u>: No drilling conducted <p>No historical drilling was conducted, and no evidence of prior drilling is observed on-site inspections by Orogen (2023-25) and Altitude (2025-26).</p> <p>Historical: See historical work statement above.</p>
<i>Drill sample recovery</i>	<ul style="list-style-type: none"> • <i>Method of recording and assessing core and chip sample recoveries and results assessed.</i> 	<ul style="list-style-type: none"> • No drilling ever conducted on the property.
	<ul style="list-style-type: none"> • <i>Measures taken to maximise sample recovery and ensure representative nature of the samples.</i> 	<ul style="list-style-type: none"> • No drilling ever conducted on the property.
	<ul style="list-style-type: none"> • <i>Whether a relationship exists between sample recovery and grade and whether sample bias may have occurred due to preferential loss/gain of fine/coarse material.</i> 	<ul style="list-style-type: none"> • No drilling ever conducted on the property.
<i>Logging</i>	<ul style="list-style-type: none"> • <i>Whether core and chip samples have been geologically and geotechnically logged to a level of detail to support appropriate Mineral Resource estimation, mining studies and metallurgical studies.</i> 	<ul style="list-style-type: none"> • No drilling is reported. • <u>Historical work</u>: See historical work statement above. <p>Data is of insufficient detail to support a MRE or mining study, no ore zone material is available for metallurgical studies.</p>
	<ul style="list-style-type: none"> • <i>Whether logging is qualitative or quantitative in nature. Core (or costean, channel, etc) photography.</i> 	<ul style="list-style-type: none"> • No drilling ever conducted on the property.
	<ul style="list-style-type: none"> • <i>The total length and percentage of the relevant intersections logged.</i> 	<ul style="list-style-type: none"> • No drilling ever conducted on the property.
<i>Sub-sampling techniques and sample preparation</i>	<ul style="list-style-type: none"> • <i>If core, whether cut or sawn and whether quarter, half or all core taken.</i> 	<ul style="list-style-type: none"> • No drilling ever conducted on the property.
	<ul style="list-style-type: none"> • <i>If non-core, whether riffled, tube sampled, rotary split, etc and whether sampled wet or dry.</i> 	<ul style="list-style-type: none"> • No drilling ever conducted on the property.
	<ul style="list-style-type: none"> • <i>For all sample types, the nature, quality and appropriateness of the sample preparation technique.</i> 	<ul style="list-style-type: none"> • No drilling is reported. • <u>Altitude</u>: Surface 0.6 kg to 4 kg rock chip samples were collected in the field and considered representative and appropriate for mineral exploration. • <u>Orogen</u>: Surface 0.2 kg to 1 kg rock chip samples were collected in the field and Orogen considered representative and appropriate for mineral exploration.

Criteria	JORC Code explanation	Commentary
		<u>Historical work</u> : Unknown, see historical work statement above.
	<ul style="list-style-type: none"> Quality control procedures adopted for all sub-sampling stages to maximise representivity of samples. 	<ul style="list-style-type: none"> No drilling is reported. <u>Altitude</u>: Inserted CRMs to supplement the laboratory QAQC <u>Orogen</u>: Inserted CRMs to supplement the laboratory QAQC. Meridan Gold (2006) and FMC Gold Company (1991) for Rock Chip sampling, appropriate high, medium, and low base metal standards (CRM's). This is considered appropriate to the exploration stage and small number of samples submitted. Laboratories introduce QAQC samples and complete duplicate check assays on a routine basis. <u>Historical work</u>: Unknown, see historical work statement above.
	<ul style="list-style-type: none"> Measures taken to ensure that the sampling is representative of the in situ material collected, including for instance results for field duplicate/second-half sampling. 	<ul style="list-style-type: none"> No drilling is reported. <u>Orogen</u>: No duplicate rock chip samples are collected during infill sampling, to confirm the original anomalous sample values to be true. Laboratories introduce QAQC samples and complete duplicate check assays on a routine basis. <u>Historical work</u>: Unknown, see historical work statement above.
	<ul style="list-style-type: none"> Whether sample sizes are appropriate to the grain size of the material being sampled. 	<ul style="list-style-type: none"> No drilling is reported. <u>Altitude</u>: 1 to 2 kg rock chip samples are considered appropriate. <u>Orogen</u>: 0.2 kg to 1.5 kg rock chip samples are somewhat appropriate to the grain size of the material being sampled. The bonanza grade results suggest a larger sample size would be recommended for future programs and collection of field duplicates. <u>Historical work</u>: Unknown, see historical work statement above.
Quality of assay data and laboratory tests	<ul style="list-style-type: none"> The nature, quality and appropriateness of the assaying and laboratory procedures used and whether the technique is considered partial or total. 	<ul style="list-style-type: none"> No drilling is reported. <u>Altitude</u>: Altitude trialled both 4-Acid (ALS Code: ME-MS61) close to total digest and Aqua Regia (ALS Code: ME-MS41L) a partial digest for multi-element analysis with ICPMS analysis, and Fire Assay (ALS Code Au-AA25) for gold, this trial will inform the most appropriate assay approach for future exploration. ALS Laboratory prep CRU-21 and PUL-23 with up to 250g of sample pulverised to 85% passing 75µm.

Criteria	JORC Code explanation	Commentary
	<ul style="list-style-type: none"> <i>For geophysical tools, spectrometers, handheld XRF instruments, etc, the parameters used in determining the analysis including instrument make and model, reading times, calibrations factors applied and their derivation, etc.</i> 	<p><u>Orogen</u>: Rock chip preparation was undertaken by BV Reno with up to 250g of sample pulverised to 85% passing 75µm (PUL-31). Rock chip sample multielement analysis conducted by BV Laboratories. ME-MS61 (48 elements, four acid digest, ICP-MS finish). ALS method pXRF-34 is non-destructive XRF for majors. Gold analysis was done via fire assay (Au-ICP21) 30gram FA ICP-AES, with ore grade Au (Au-GRA21) and Ag (Ag-GRA21) both using 30gram sample with FA-GRAV finish and Ore Grade Elements (Cu, Pb, Zn) four acid ICP-AES (ME-OG62). Elements analysed were Ag, Al, As, Au, Ba, Be, Bi, Ca, Cd, Ce, Co, Cr, Cs, Cu, Fe, Ga, Ge, Hf, Hg, In, K, La, Li, Mg, Mn, Mo, Na, Nb, Ni, P, Pb, Rb, Re, S, Sb, Sc, Se, Sn, Sr, Ta, Te, Th, Ti, Tl, U, V, W, Y, Zn, Zr. This is considered near-total digest. The nature, quality and appropriateness of these assay techniques is considered best practice for the respective exploration surface geochemical sampling.</p> <p>FMC Gold Company 1991 and Meridan Gold 2006: both used Reno laboratory Chemex Labs Inc (later ALS Chemex) and inserted CRMs, using PUL-31 preparation (as above) with Fire Assay (Au-AA23) and Aqua Regia digest with 34 element ICP-AES finish (MS-ICP41). Aqua regia is partial digest and it's possible under-reporting of assays could have occurred. Although CRMs were inserted, the CRM contents is not recorded in the available report and no comments are available from historical records on the QA/QC. Therefore, it is recommended to place a higher level of confidence on the 2023 Orogen results.</p> <p><u>Historical work</u>: Unknown, see historical work statement above.</p> <ul style="list-style-type: none"> <u>Altitude</u>: CSAMT: Controlled Source Audio Magneto-Telluric operated by Zonge USA, using 50m dipoles in spreads consisting of four down-line E-field dipoles (Ex) with a single magnetic field measurement (Hy) made in the centre of the spread. Measurements at frequencies from 1 hertz to 8192 hertz in binary increments. Data was acquired from two remote dipole transmitters, approximately 1.5 kilometres in length and oriented

personal use only

Criteria	JORC Code explanation	Commentary
		<p>parallel to the survey lines. The transmitters were located between 6-10 km from the survey area and orientated approximately on a line that bisects and is perpendicular to the survey lines. Zonge established survey control for this survey using Juniper GEODE system with sub-meter accuracy. Instrumentation (CSAMT) consisted of a Zonge GDP-3224, multi-channel receiver. The signal source will be a Zonge GGT-30, 30 KVA transmitter powered by a ZMG-30 KVA motor-generator. Magnetic field measurements will be made using an ANT/6 coil.</p> <p>Drone Magnetics: was collected using as Gemsys GSMP – 35U Potassium Magnetometer & Gemsys Overhauser Base Mag and flown at 35m above ground level by Storm Exploration Services. A Terra-Spec 4 was used to analyse rock chips collected for alteration mapping, averaging ~10 points per sample.</p> <p><u>Orogen:</u> No drilling is reported. No use of geophysical tools is reported.</p> <p><u>Historical work:</u> Unknown, see historical work statement above.</p>
	<ul style="list-style-type: none"> Nature of quality control procedures adopted (eg standards, blanks, duplicates, external laboratory checks) and whether acceptable levels of accuracy (ie lack of bias) and precision have been established. 	<ul style="list-style-type: none"> No drilling is reported. <p><u>Orogen & Altitude:</u> Inserted CRMs' but not duplicates or blanks and relied on BV Laboratory to introduce QA/QC samples and complete duplicate check assays on a routine basis. This is appropriate to the early stage of the project and sample medium. No abnormalities were reported in Laboratory QA/QC or CRMs.</p> <p><u>Historical work:</u> Unknown, see historical work statement above.</p>
Verification of sampling and assaying	<ul style="list-style-type: none"> The verification of significant intersections by either independent or alternative company personnel. The use of twinned holes. Documentation of primary data, data entry procedures, data verification, data storage (physical and electronic) protocols. 	<ul style="list-style-type: none"> No drilling results are presented in this report. No twinned holes. No drilling results are presented in this report. No drilling is reported. <p><u>Altitude:</u> Rock chips logged into a field tablet, a photo taken with the numbered sample bag on location with the Solocator App which imprints GPS onto the image as backup and cross check.</p> <p><u>Orogen:</u> Rock chips are logged onto tablet and cross checked in GIS for accuracy. Data is stored in a Database administered by an</p>

personal use only

Criteria	JORC Code explanation	Commentary
	<ul style="list-style-type: none"> Discuss any adjustment to assay data. 	<p>experienced database manager. <u>Historical work:</u> Primary data collection methods is unknown and what further protocol or data entry procedures, see historical work statement above.</p> <ul style="list-style-type: none"> No drilling is reported. <u>Altitude:</u> No changes to assay data. <u>Orogen:</u> No changes to assay data. <u>Historical work:</u> Unknown, see historical work statement above.
Location of data points	<ul style="list-style-type: none"> Accuracy and quality of surveys used to locate drill holes (collar and down-hole surveys), trenches, mine workings and other locations used in Mineral Resource estimation. 	<ul style="list-style-type: none"> n/a as no MRE is estimated. <u>Orogen:</u> No drilling is reported. <u>Orogen:</u> Rock chips points are located using a hand-held GPS or inbuilt GPS in tablet accurate to +/-5m <u>Historical work:</u> see historical work statement above. Rock chip samples taken 1988 (4), 1990 (2) and 1991 (23) prior to widespread GPS adoption and/or low accuracy (prior to 2000 when restrictions were lifted on high accuracy for civilian use) accuracy would be +/-50m.
	<ul style="list-style-type: none"> Specification of the grid system used. 	<ul style="list-style-type: none"> WGS84 – UTM Zone 11N
	<ul style="list-style-type: none"> Quality and adequacy of topographic control. 	<ul style="list-style-type: none"> RLs have been calculated using available open file USGS 2020 LiDAR. This is more than adequate for the early stage of exploration contemplated.
Data spacing and distribution	<ul style="list-style-type: none"> Data spacing for reporting of Exploration Results. 	<ul style="list-style-type: none"> No drilling is reported. <u>Altitude:</u> The flight line spacing on the drone magnetics of 50m is considered “highly detailed” and little further information would be gained by increasing the sample density. Rock chips & structural measurements were taken where available on outcrop. The CSAMT survey lines spacing was between 280 and 400m using a 50m diploe station spacing, as indicated on figure in the main body of this announcement. <u>Orogen:</u> Rock chips have been acquired over specific outcrop at first pass spacing, with no systematic grid. However, the data is useful as a first pass.

Criteria	JORC Code explanation	Commentary
	<ul style="list-style-type: none"> Whether the data spacing and distribution is sufficient to establish the degree of geological and grade continuity appropriate for the Mineral Resource and Ore Reserve estimation procedure(s) and classifications applied. Whether sample compositing has been applied. 	<p><u>Historical work</u>: The spacing over some prospects is useful as a first pass, but areas remain untested.</p> <ul style="list-style-type: none"> No, there is insufficient data to support geological and grade continuity to support an MRE - no MRE is declared. No sample compositing has been applied. <u>Historical work</u>: see historical work statement above. No Drilling reported.
Orientation of data in relation to geological structure	<ul style="list-style-type: none"> Whether the orientation of sampling achieves unbiased sampling of possible structures and the extent to which this is known, considering the deposit type. If the relationship between the drilling orientation and the orientation of key mineralised structures is considered to have introduced a sampling bias, this should be assessed and reported if material. 	<ul style="list-style-type: none"> No drilling is reported. The relationship between sampling orientation and the orientation of key mineralised structures has not been confirmed. No drilling is reported, therefore no determination of a relationship between drilling orientation and the orientation of key mineralised structures can be considered. <u>Historical work</u>: see historical work statement above. No Drilling reported.
Sample security	<ul style="list-style-type: none"> The measures taken to ensure sample security. 	<ul style="list-style-type: none"> Noting - no drilling is reported <u>Altitude</u>: A secure chain of custody of sample from the project site to the laboratory with rock chip samples delivered by Altitude staff. <u>Orogen</u>: A secure chain of custody of samples from the project site to laboratory delivered by Orogen staff. All samples were delivered to the laboratory facility without any evidence of interference. <u>Historical work</u>: Unknown, see historical work statement above.
Audits or reviews	<ul style="list-style-type: none"> The results of any audits or reviews of sampling techniques and data. 	<ul style="list-style-type: none"> Altitude has conducted a desktop review of Orogen assay certificates and results, and no inconsistencies have been observed. Orogen: No review or audit has been completed. <u>Historical work</u>: Unknown, see historical work statement above.

Section 2 Reporting of Exploration Results

(Criteria listed in the preceding section also apply to this section.)

Criteria	JORC Code explanation	Commentary
<i>Mineral tenement and land tenure status</i>	<ul style="list-style-type: none"> <i>Type, reference name/number, location and ownership including agreements or material issues with third parties such as joint ventures, partnerships, overriding royalties, native title interests, historical sites, wilderness or national park and environmental settings.</i> 	<ul style="list-style-type: none"> Altitude Minerals Ltd has 100% ownership in the Firenze Property. A 3% Royalty (total) in favour of Orogen and its affiliates was granted by Altitude with a 1% buydown provision for \$1.5m (reducing the royalty to 2%). No Native Title exists. A Bureau of Land Management (BLM) Wilderness Study Area (WSA) exists immediately west (uphill) of the claims. The fully granted BLM unpatented mineral claims allow for all forms of exploration including drilling. No freehold land or other significant users has been identified in the due diligence to date. The 90 claims cover 7.4 km², claim numbers FZ01-FZ90; BLM numbers NV105835379 to NV105835468 recorded on 19 May 2023.
	<ul style="list-style-type: none"> <i>The security of the tenure held at the time of reporting along with any known impediments to obtaining a licence to operate in the area.</i> 	<ul style="list-style-type: none"> The tenure has been independently verified by Altitude's legal advisors and is in good standing. No land access agreements are required, and the location is over 20km from the nearest town, no dwellings or people reside on the claims. No impediments or further permissions are required to access the ground for low impact exploration. Drilling permits have been secured from the Federal BLM allowing for the planned drilling discussed in this announcement.
<i>Exploration done by other parties</i>	<ul style="list-style-type: none"> <i>Acknowledgment and appraisal of exploration by other parties.</i> 	<ul style="list-style-type: none"> No reported drilling programs on the project. No evidence of historical drilling at surface on site visit by Altitude and Orogen geologists 2025 and 2026. Historical trenching, two short adits less than ten metres and four shallow shafts less than ten metres have no recorded data. No historical production data has been located but the observed scale of shafts lead the author to believe these were exploratory in nature and only limited material was removed. In 1974 Nevada Bureau of Mines bulletin #83, Geology of Minerals Deposits of Churchill County (p58) states a small mill was established in the Clan Alpine area (which would have included the Firenze Claims) in 1866 but operated for less than 1 year, the exact location is

Criteria	JORC Code explanation	Commentary
		<p>unknown.</p> <p>Government public records show that the USGS acquired the 1985 Clan Alpine airborne regional magnetic geophysics data on 800m flight line spacing. Little no other details are known regarding this survey. A LiDAR survey of 5km line spacing was collected by the USGS as part of the Nevada West Central - Earth MRI Program 2020.</p> <p>Previous exploration activities collected surface geochemical samples totalling, 57 rock chips: 1988 (4) Kennecott JV; 1990 (2) Kennecott JV; 1991 (23) FMC Gold Company (Chuck Robbins); and 2006 (22) Meridian Gold (P. Mejstrick and J. Pierson) and a further 6 rock chips of unknown origin captured in Orogen files.</p> <p>Gravity data – a single station of ground-based data is recorded on a 1997 Nevada compilation by the USGS in the vicinity of the Firenze claims and is not considered useful.</p> <p>A geology map has been compiled by Orogen using ground mapping and interpretation of the magnetics, this is included in the report.</p> <p>This data has been collated into the Company's GIS package.</p>
<i>Geology</i>	<ul style="list-style-type: none"> <i>Deposit type, geological setting and style of mineralisation.</i> 	<ul style="list-style-type: none"> The Firenze project is located in Nevada's Basin and Range region, Churchill County gold district and is prospective for high-grade vein low-sulphidation Ag-Au epithermal mineralisation below the outcropping veins in the west of the property.
<i>Drill hole Information</i>	<ul style="list-style-type: none"> <i>A summary of all information material to the understanding of the exploration results including a tabulation of the following information for all Material drill holes:</i> <ul style="list-style-type: none"> <i>easting and northing of the drill hole collar</i> <i>elevation or RL (Reduced Level – elevation above sea level in metres) of the drill hole collar</i> <i>dip and azimuth of the hole</i> <i>down hole length and interception depth</i> <i>hole length.</i> <i>If the exclusion of this information is justified on the basis that the information is not Material and this exclusion does not detract</i> 	<ul style="list-style-type: none"> None reported as no drilling has occurred on the project. No drilling has ever occurred on the project. No data excluded.

Criteria	JORC Code explanation	Commentary
	<i>from the understanding of the report, the Competent Person should clearly explain why this is the case.</i>	
Data aggregation methods	<ul style="list-style-type: none"> <i>In reporting Exploration Results, weighting averaging techniques, maximum and/or minimum grade truncations (eg cutting of high grades) and cut-off grades are usually Material and should be stated.</i> 	<ul style="list-style-type: none"> No top cut or cut off has been applied to rock chip data and this approach is considered appropriate to the exploration stage.
	<ul style="list-style-type: none"> <i>Where aggregate intercepts incorporate short lengths of high-grade results and longer lengths of low grade results, the procedure used for such aggregation should be stated and some typical examples of such aggregations should be shown in detail.</i> 	<ul style="list-style-type: none"> Not Applicable as no drilling has ever occurred on the project. No aggregation methods applied to rock chip data.
	<ul style="list-style-type: none"> <i>The assumptions used for any reporting of metal equivalent values should be clearly stated.</i> 	<ul style="list-style-type: none"> No metal equivalents have been reported
Relationship between mineralisation widths and intercept lengths	<ul style="list-style-type: none"> <i>If the geometry of the mineralisation with respect to the drill hole angle is known, its nature should be reported.</i> 	<ul style="list-style-type: none"> Not applicable as no drilling has occurred on the project.
Diagrams	<ul style="list-style-type: none"> <i>Appropriate maps and sections (with scales) and tabulations of intercepts should be included for any significant discovery being reported These should include, but not be limited to a plan view of drill hole collar locations and appropriate sectional views.</i> 	<ul style="list-style-type: none"> Appropriate maps and diagrams are included in the body of the report or immediately above the JORC Table. No cross sections are provided as no drilling is reported.
Balanced reporting	<ul style="list-style-type: none"> <i>Where comprehensive reporting of all Exploration Results is not practicable, representative reporting of both low and high grades and/or widths should be practiced to avoid misleading reporting of Exploration Results.</i> 	<ul style="list-style-type: none"> The report is considered balanced, as all known significant results are reported.
Other substantive exploration data	<ul style="list-style-type: none"> <i>Other exploration data, if meaningful and material, should be reported including (but not limited to): geological observations; geophysical survey results; geochemical survey results; bulk samples – size and method of treatment; metallurgical test results; bulk density, groundwater, geotechnical and rock characteristics; potential deleterious or contaminating substances.</i> 	<ul style="list-style-type: none"> Altitude Drone Magnetics: 315 line-km at 50m line spacing at 35m above ground level on east-west grid with 500m tie-lines (north-south). CSAMT: 9 lines for 17.2km with 50m dipole and line spacing of between 290m and 400m as per diagrams in the body of the announcement. Alteration mapping was completed were outcrops allowed with the aim to interpret the height in the epi-thermal system relative to the

Criteria	JORC Code explanation	Commentary
		boiling zone. Structural measurements of outcropping veins were recorded on the central vein zone and integrated with the CSAMT results to inform structural targets for drill testing.
Further work	<ul style="list-style-type: none"> The nature and scale of planned further work (eg tests for lateral extensions or depth extensions or large-scale step-out drilling). 	<ul style="list-style-type: none"> A 9 to 10 hole ~2,600m RC Drilling is planned and follow up RC and core drilling will be planned based on results.
	<ul style="list-style-type: none"> Diagrams clearly highlighting the areas of possible extensions, including the main geological interpretations and future drilling areas, provided this information is not commercially sensitive. 	<ul style="list-style-type: none"> Until drilling confirms structural interpretation and mineralisation is identified the potential extensions to prospects have cannot be determined.